

TruPlan

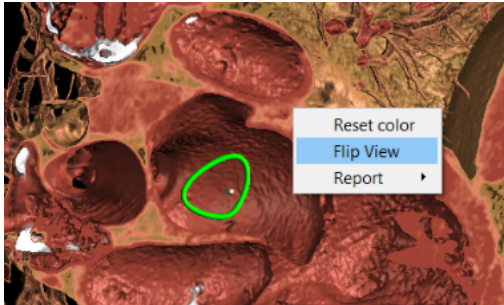
v1.0.3 (6391)

Release Notes

What's New in Version 1.0.3

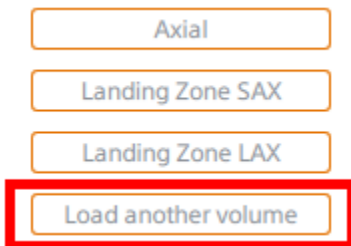
Version 1.0.3 of TruPlan is the third maintenance release to the first major version of the product. For a full description of product functionality please refer to the user manual.

Flip view direction, endo view:

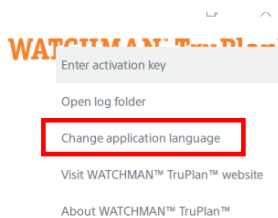


Implemented in the Right mouse button menu. Keep in mind that the view direction flips back when interacting with any of the MPRs.

Possibility to replace the volume of delayed scan in Thrombus view:



Translations:



Click TruPlan logo to select language.

Resolved Issues

| Number | Summary |
|--------------|---|
| HV-69 | Software terminates when loading specific datasets. |
| HV-89 | Incorrect % shown in sizing table. |
| HV-87 | License needs to be reactivated for each user. |
| HV-86 | The short axis view looks inside left atrium instead of LAA |
| HV-80 | System terminates when drawing co-axial line. |
| HV-73 | User cannot change series in Thrombus module. |
| HV-67 | TruPlan application start-up issues. |
| HV-66 | Failure on Saving Sessions. |
| HV-64 | Measurements are placed slightly offset from the mouse. |
| HV-60 | Cannot load specific datasets. |

Known Issues

| Number | Summary | Risk based rationale |
|-----------------|--|--|
| HV-59 | Close splines contain a loop under particular circumstances. <i>Workaround: Remove the loop, by dragging the control points</i> | In this case no measurement results will be shown, therefore it is obvious to the user and no incorrect conclusion can be drawn. |
| HV-65 | Landing zone contour not optimal. <i>Workaround: Adjust the contour manually by dragging the control points</i> | No clinical risk since the user is trained to verify and correct this measurement. |
| HV-120 | Select All text for New Patient Name field in Anonymize Patient window is not allowed. <i>Workaround: Use the backspace key to clear the text when needed</i> | No clinical risk, UI inconsistency only. |
| CR1-855 | TruPlan becomes unresponsive when loading large series. <i>Workaround: Only occurs for whole body scans, which are not suitable for LAA planning.</i> | No incorrect information is presented to the user, so no patient risk. |
| CR1-1362 | Measurement icons display cosmetic issue in non-default screen resolution. | Cosmetic issue only, no patient risk |

| | | |
|-----------------|--|---|
| | <i>Workaround: Hardly visible, so no workaround needed.</i> | |
| CR1-1365 | TruPlan gets stuck when the system has multiple memory intensive software running. <i>Workaround: Extensive memory intensive applications should not be opened at the same time OR use system with 16GB memory.</i> | No incorrect information is presented to the user, so no patient risk. |
| CR1-1458 | [3D viewer] Black stripe (artifact) when interacting with sculpted volume. <i>Workaround: User can interact with the sculpted volume. The sculpted volume looks ok in dynamic view but not is high quality rendering.</i> | Cosmetic issue only, no patient risk. |
| HV-57 | [TEE] User is able to go to TEE page without confirming. <i>Workaround: User can press the confirm button before changing the pages. User can also press the back button to go back.</i> | Minor inconsistency, no patient risk. |
| HV-38 | Render artifact when drawing volume bounding box planes after sculpting. <i>Workaround: Currently, volume bounding box are turned off as a workaround for user.</i> | Cosmetic issue only, no patient risk. |
| HV-27 | LAA ostium contour detection fails for specific studies. <i>Workaround: User can manually update the contours if the contours are not accurate.</i> | When this happens, the user will see it, and can rectify the situation manually. No patient risk. |
| HV-3 | Color of contour in upper left viewer section cannot be changed. <i>Workaround: User can change the color of the contour in any other section.</i> | Minor inconsistency, no patient risk. |
| HV-2 | When switching between TEE and other modules, probe is reset. <i>Workaround: User can change the probe and save it to preserve the orientation before changing modules.</i> | Minor inconsistency, no patient risk. |

External Libraries – Copyright and Licensing Requirements

This is a list of free and open source software used in our products, including any modifications made by Circle Cardiovascular Imaging Inc., throughout the course of our development.

Qt v5.14.1

Project Website
License
Download

Qt Project
Qt Commercial Enterprise License
Source Code and Binaries

DCMTK v3.6.4

Project Website
License

Download

DICOM Toolkit (DCMTK) Project
DCMTK License
DCMJP2K Commercial License
DCMTK Source Code

Eigen v3.3.7

Project Website
License
Download

Eigen Project
Apache License v2.0
Eigen Source Code

GLEW v2.1.0

Project Website
Licenses

The OpenGL Extension Wrangler (GLEW) Project
The OpenGL Extension Wrangler Library License
Mesa 3-D Graphics Library License
The Khronos Group Inc. License

GLM v0.9.9.6

Project Website
Licenses
Download

OpenGL Mathematics (GLM) Project
The Happy Bunny and MIT Licenses
GLM v0.9.3.4 Source Code

OpenCV v4.2.0

Project Website
License
Download

Open Source Computer Vision (OpenCV) Project
OpenCV (3-Clause BSD) License
OpenCV v2.4.3 Source Code

Assimp v5.0.1

Project Website
License
Download

Assimp website
Assimp license
Source Code and Binaries

GlFW v3.2.1

Project Website
License
Download

GLFW
GLFW License
Source Code and Binaries_

Google Protocol Buffers v3.8.0

Project Website
License
Download

Website
Protobuf License
Source Code and Binaries

Cpp-httplib v0.5.0

Project Website
License
Download

Qt Project
Qt Commercial Enterprise License
Source Code and Binaries

Orthanc v20.5.3

Project Website
License
Download

Orthanc Server
GPL 3.0
Source Code and Binaries_

Eigen v3.3.7

Project Website
License
Download

Eigen Project
Eigen License_
Source Code and Binaries_

QuaZip v0.9.1

Project Website
License
Download

Quazip project
Quazip License
Source Code and Binaries_

ZLIB v1.2.11

Project Website
License

Zlib Project_
Zlib license

| | |
|-------------------------|---|
| Download | Source Code and Binaries_ |
| Tensorflow v1.13 | |
| Project Website | Tensorflow Project |
| License | Tensorflow License |
| Download | Source Code and Binaries_ |
| NSIS v3.05 | |
| Project Website | Nsis Project_ |
| License | NSIS License |
| Download | Source Code and Binaries_ |

Support

For further information on installing/exchanging the dynamic libraries please contact Circle Cardiovascular Imaging support.

Phone: +1 (403) 338-1870

E-mail: support@circlecvi.com

Website: circlecvi.com

Circle Cardiovascular Imaging Inc.

1100, 800 5th Avenue SW

Calgary, AB T2P 3T6

Canada