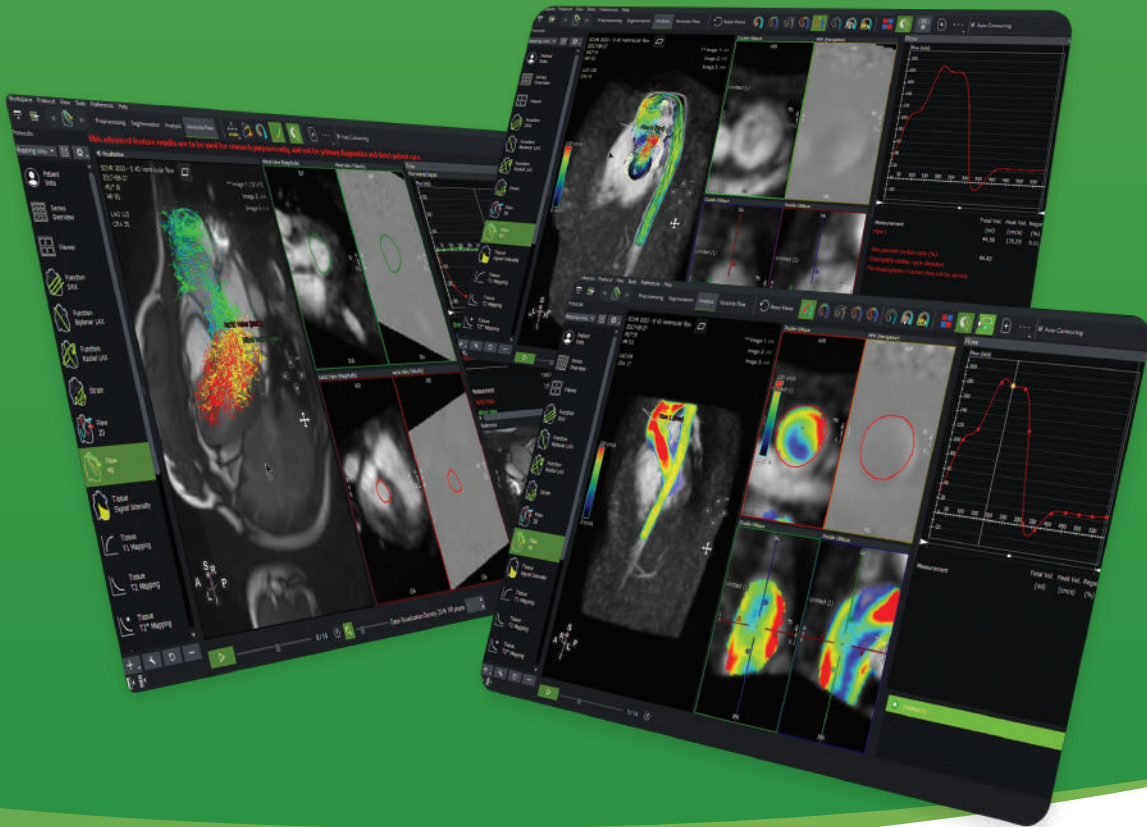


cvi42® | 4D Flow

Visualize and quantify flow patterns anywhere
in a 3D structure.



For more information, contact us at sales@circlecvi.com
or scan the QR code.



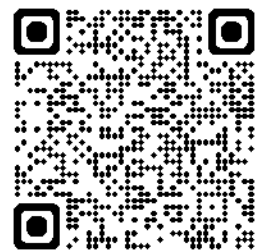
www.circlecvi.com



Circle Cardiovascular Imaging



@circlecvi



At the **Heart** of
IMAGING



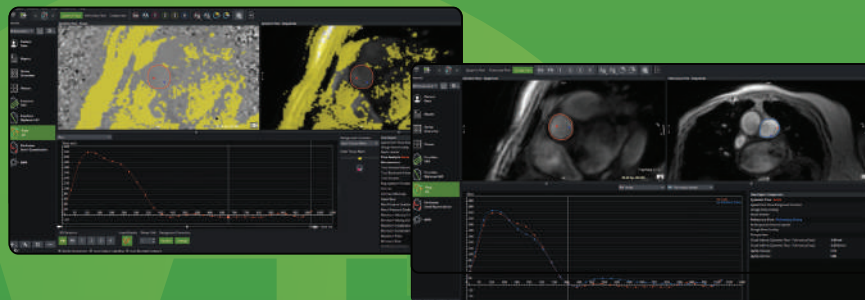


Flow

Quantify flow, automatically calculate Qp:Qs and correct for aliasing.

2D FLOW

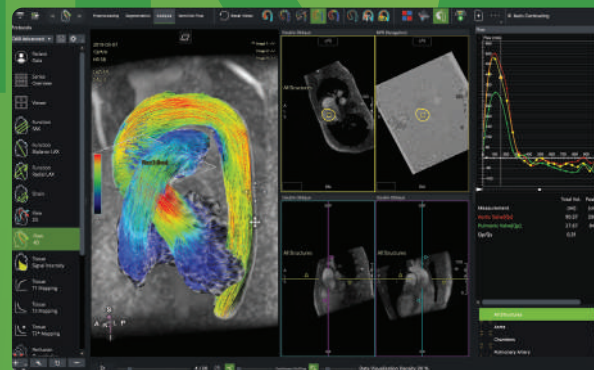
- Full flow analysis for volumes with server-side processing
- Automated AI-based aortic and pulmonary contour detection
- Offset correction and antialiasing
- Flow comparisons and Qp:Qs



4D FLOW[†]

Pre-Processing

- Crop large data sets to a ROI.
- 4D offset correction and antialiasing.
- Comprehensive 4D viewer for flow dynamics.
- AI-automated workflows to visualize and quantify flow patterns anywhere in a 3D structure.
- Auto-loading and auto-contouring, AI-based segmentation of aorta, pulmonary artery and heart chambers.
- Automatically detected peak-velocity planes in the aorta and pulmonary artery for automated Qp/Qs measurement.
- Faster loading times for large studies.

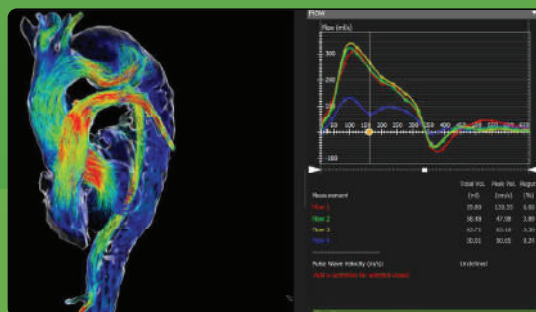


[†] New license required.



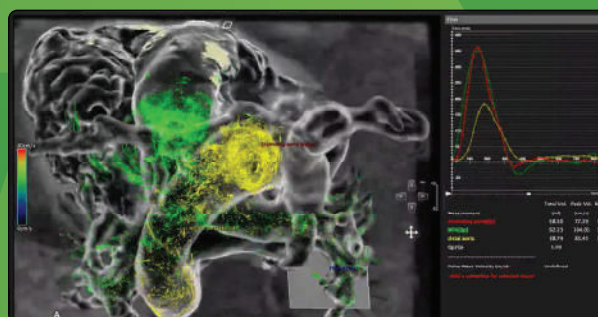
Analysis

- Diverse flow visualization
- Automated vessel lumen detection and planar flow measurement
- Semi-automated Qp:Qs calculation
- Pulse Wave Velocity



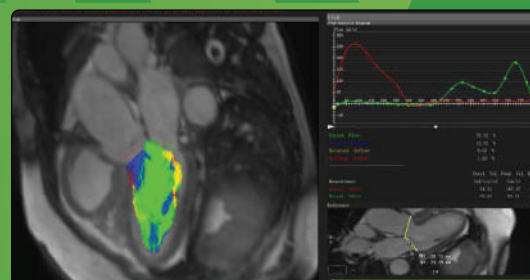
Segmentation

- PCMRA optimization for small or big sized vessels
- Advanced vessel segmentation, centerline correction and extraction for multiple structures
- Export volume as STL file



Advanced Research Tools^{††}

- Kinetic energy
- Relative pressure
- 3D Wall Shear Stress
- Energy loss
- Ventricular flow assessment including direct, residual, delayed and retained flow components and associated kinetic energy
- 2D circumferential and axial Wall Shear Stress



^{††} Not for clinical use.

Brief Summary: Indications, contraindications warnings and precautions can be found in the product labelling.

Disclaimer: Not all modules or features are available in every region. Contact your local Circle representative for all regional availability.

CAUTION: Federal law (USA) restricts these devices for sale by, or on the order of a physician. The system is intended for use only by trained Healthcare Professionals.