

# cvi42® | Quantitative Perfusion

Visualize perfusion defects in patients with suspected Coronary Artery Disease (CAD) and quantify myocardial blood flow at rest and stress.



For more information, contact us at [sales@circlecvi.com](mailto:sales@circlecvi.com) or scan the QR code.



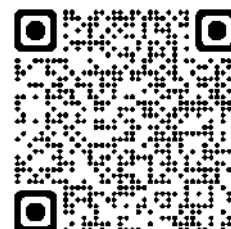
[www.circlecvi.com](http://www.circlecvi.com)



Circle Cardiovascular Imaging



@circlecvi



At the **Heart** of  
**IMAGING**



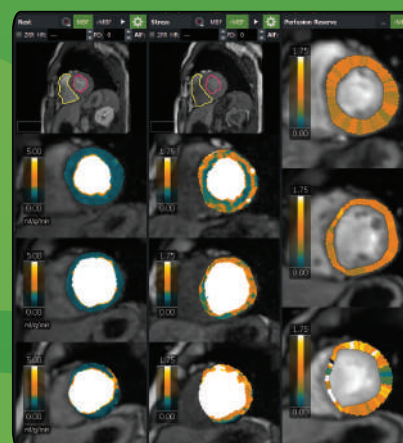
For research use only.



Quantify and evaluate absolute myocardial perfusion in mL/g/min to assess Ischemic heart disease, especially microvascular disease.

## QUANTITATIVE PERFUSION

- Automatic quantification of absolute myocardial blood flow (MBF) by segments and coronary territory
- Automatic relative myocardial blood flow (rMBF) in stress, rest and ratio
- Automatic pixel-based map of MBF/rMBF at rest and stress
- Automatic myocardial perfusion reserve (Ratio rest/stress)
- Automatic contours detection
- Automatic apply of post processing motion correction (cvi42 MoCo)
- Multi-vendor support\*
- Multi-sequence support\*
- Synchronized viewer for visual analysis of rest, stress, LGE and Function
- Automatic semi-quantitative perfusion and curve display of SI per time



*"Qualitative and quantitative stress CMR enables one-stop assessment of myocardial ischemia, myocardial viability, global and regional cardiac function, MPR, and MBF at stress and rest. It has been widely used to evaluate patients with suspected or known significant CAD and CMD. It has shown superiority to other established non-invasive stress testing methods regarding cost-effectiveness as the first-line evaluation for chest pain"\*\*\**

\*Consult one of our Specialist team to check what's your current scanner and sequence to set up your acquisition protocol

\*\*\* Zhou W, Sin J, Yan AT, Wang H, Lu J, Li Y, Kim P, Patel AR, Ng MY. Qualitative and Quantitative Stress Perfusion Cardiac Magnetic Resonance in Clinical Practice: A Comprehensive Review. Diagnostics (Basel). 2023 Jan 31;13(3):524. doi: 10.3390/diagnostics13030524. PMID: 36766629; PMCID: PMC9914769.

Brief Summary: Indications, contraindications warnings and precautions can be found in the product labelling.

Disclaimer: Quantitative Perfusion is for research use only.

CAUTION: Federal law (USA) restricts these devices for sale by, or on the order of a physician. The system is intended for use only by trained Healthcare Professionals.