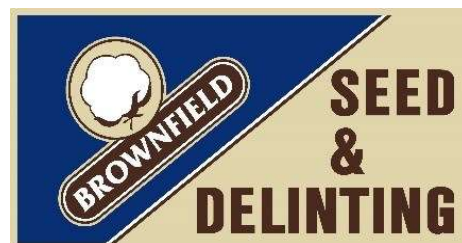


COTTON VARIETY GUIDE

- New Varieties
- Seed Cost
- Delinting Process
- Seed Treatment
- Herbicide Options

**TOUGH COTTON
FOR TOUGH
CONDITIONS !**

2022





Ton Buster Elite

Plant type: Ton Buster Elite

Leaf	Maturity	Boll Type	Adaption	Capture Rights
Smooth	Medium	Semi-Tight	Irrigation/ Dry	\$10 per bag

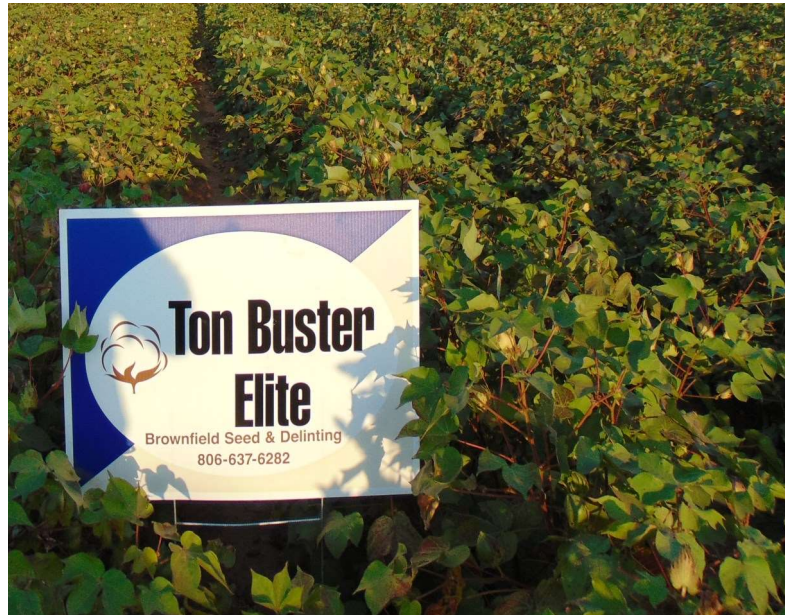
Widely Adaptable

Best in Irrigated

Intermediate Plant Type

Excellent Fiber Package

Picker Type Cotton



3 – Year Avg Irr/Dry-Land

Color	Leaf	Mic	Strength	Staple	Uniformity	Yield
41-1	3	4.4	27.2	1.06	78.7	785

Ton Buster Magnum



Plant type: Ton Buster Magnum

Leaf Maturity Boll Type Adaption Capture Rights

Smooth

Early-Mid

Semi-Tight / Picker

Irrigation / Dry

\$10 per bag

Heat Tolerant

Semi Tight

Mid Season

Medium Plant Height

Excellent Irrigation / Solid dry land



1-Year Avg Irrigated

Color	Leaf	Mic	Strength	Staple	Uniformity	Yield
N/A	N/A	4.1	29.5	1.13	N/A	1480

BSD 598

Plant type: BSD 598

Leaf	Maturity	Boll Type	Adaption	Capture Rights
Smooth	Medium	Semi-Tight	Irrigation / Dry	\$5 per bag

Indeterminate Plant

Stress Tolerant

Responds to Growth Regulators

Excellent Plant Uniformity



3 – Year Avg Irr/Dry-Land

Color	Leaf	Mic	Strength	Staple	Uniformity	Yield
31-1	3	4.2	28.8	1.08	80.3	792

BSD 224

Plant type: BSD 224

Leaf	Maturity	Boll Type	Adaption	Capture Rights
Smooth	Medium	Semi-Tight	Irrigation / Dry	\$5 per bag



Mid-Season

Large seed size

High Production Consistency

Excellent Vigor

Indeterminate Plant Type

Minimal Management



3 – Year Avg Irr/Dry-Land

Color	Leaf	Mic	Strength	Staple	Uniformity	Yield
41-1	3	4.5	29.6	1.04	79.8	791

BSD 9X

Plant type: BSD 9X

Leaf	Maturity	Boll Type	Adaption	Capture Rights
Smooth	Medium	Tight	Irrigation	\$10 / \$5 per bag
Mid Season		High Yield		
Easily Managed		Performs in Irrigated & Dry		
Stripper / Picker Cross				



3 – Year Avg Irr/Dry-Land

Color	Leaf	Mic	Strength	Staple	Uniformity	Yield
41-1	3	4.7	29.8	1.09	78.9	854

BSD 4X

Plant type: BSD 4x

Leaf	Maturity	Boll Type	Adaption	Capture Rights
Smooth	Medium	Tight	Irrigation / Dry	\$10 / \$5 per bag



Heat Tolerant

Tight in the Burr

Mid to Short Season

No Growth Regulator Required

Compact Determinate Plant Type

Performs in Sand or Clay Soil



1– Year avg Irrigated

Color	Leaf	Mic	Strength	Staple	Uniformity	Yield
N/A	N/A	4.6	31.1	1.12	N/A	1445

TAMCOT 73

Plant type: TAMCOT 73

Leaf	Maturity	Boll Type	Adaption	Capture Rights
Smooth	Mid-Full	Semi-Tight	Irrigated / Dry	\$15 per bag

Mid/ Full Season

Medium Maturity

Open Boll / Picker Type

Widely Adaptable

High Yield / Grades Well

Semi Irrigated preferred



TAMCOT 73 is licensed to BS&D from Texas A&M University. It has been shown to be a highly competitive picker quality variety. Over the years this variety has been very mobile, while maintaining excellent grades and yields.

1-Year average irrigated

Color	Leaf	Mic	Strength	Staple	Uniformity	yield
41-1	3	3.8	30.3	1.16	82.6	1064

Acala 1517-18

Plant type: Acala 1517-18

Leaf	Maturity	Boll Type	Adaption	Capture Rights
Smooth	Full	Semi-Open	Semi-Irrigation	\$5 per bag

Glandless

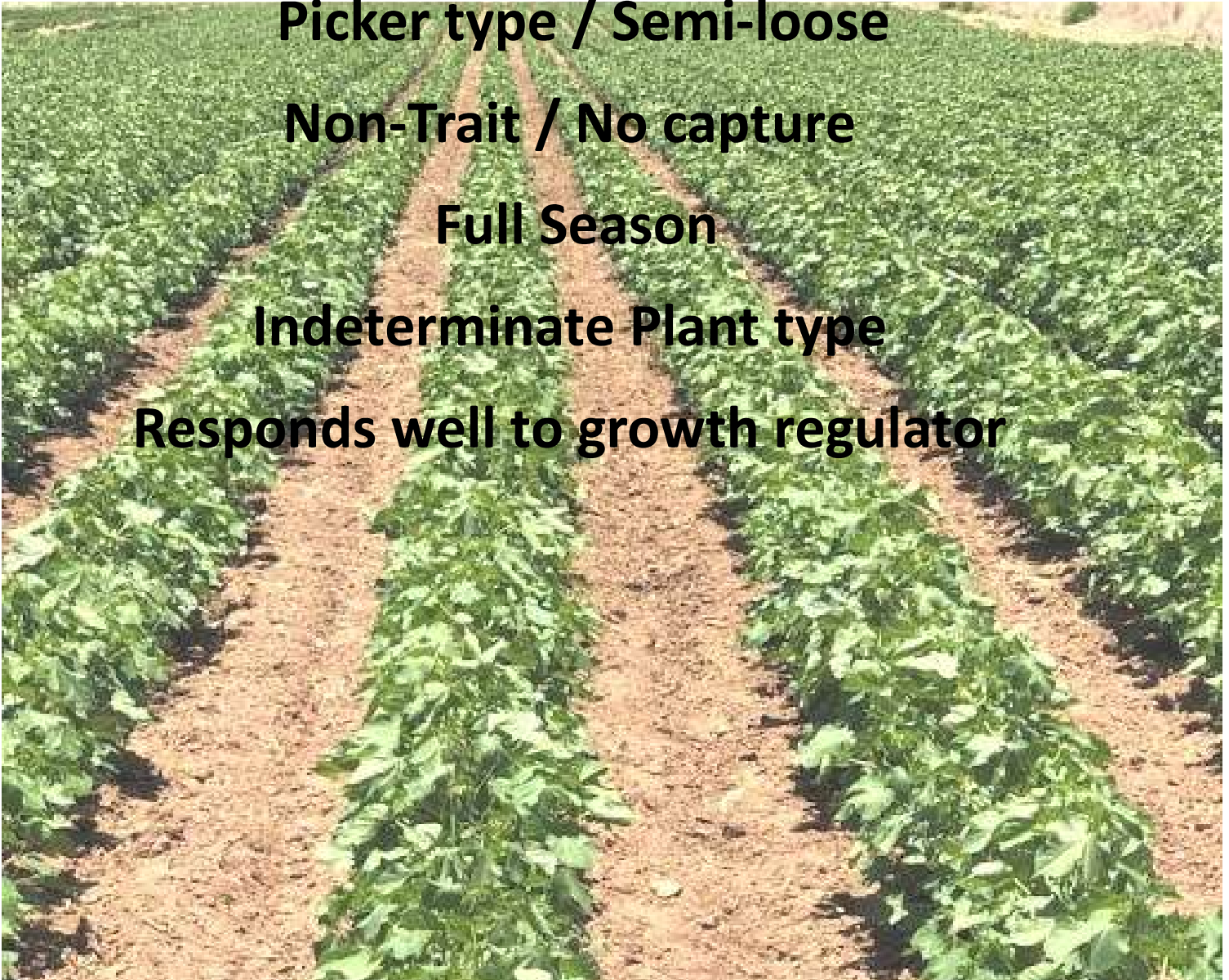
Picker type / Semi-loose

Non-Trait / No capture

Full Season

Indeterminate Plant type

Responds well to growth regulator



3 – Year Avg Irr/Dry-Land

Color	Leaf	Mic	Strength	Staple	Uniformity	Yield
31-	3	3.8	29.8	1.08	83.0	726

2022 Seed Pricing

For the 2022 growing season all varieties will be priced as follows

Treated varieties:	\$125 per 50# bag
Non-treated varieties: 5% GMO	\$125 per 50# bag
Non-treated varieties: 1 to 4% GMO	\$125 per 50# bag
Non-treated varieties: 0% GMO	\$125 per 50# bag

Call BS&D office to reserve your cotton seed today.

Seed subject to capture can only be delinted at BS&D. Prices are subject to change. Capture rights price may be subject to change. Payment due in full in 30 days. Reserved seed not paid in a timely manner may lead to other charges but not limited to storage fee or pallet charge. Seed purchase returns may be accepted per BS&D desecration.

For more information contact:

Richard Percival (806)-777-4545

Branden Watson (405)-332-6769

Klint Forbes (806)-548-1048

Wade Cowan (806)-548-0870

Visit our website@ www.brownfieldseed.com

Brownfield Seed & Delinting Disclosures

***Seed**

While extensive research has been done on all cotton varieties listed herein, all statements contained with this publication are for information purposes only. Individual soil, climate, and farming practices may affect how a variety performs. As with all seed sold there are no warranties express or implied.

*** GMO Testing**

GMO test will be pulled and conducted at BS&D facility. BS&D is not a certified lab, this test is not a certified test nor can it be used as a certified test result. If seeds fail, due to GMO testing, the seed will be sent to the gins delivery point by BS&D. The grower will be charged for the GMO test, and a normal freight rate for delivery return to the gin, buying point and credited or paid to the gin. Prices subject to change without notice.

BS&D company respects all seed, PVP's and tests for GMO traits, as not to infringe upon other companies products.

*** Chemical**

All statements contained with the publication are for information purpose only. Individual soil, climate, and farming practices may affect how a chemical performs. Always apply chemical at label recommended rates.

Delinting Process

Take control of *your* seed cost!

It's as easy as



Step 1

Contact Brownfield Seed & Delinting and we will guide you to high yield, and high-profit cotton varieties to catch and delint.

Step 2

Grower notifies the gin of his seed catch.

Step 3

Brownfield Seed & Delinting will take care of the rest!

2022 Delinting Non-GMO Cotton Seed

- BS&D can make arrangements to pick up fuzzy seed at the gin, the grower and/or the gin may deliver to BS&D.
- Standard testing: GMO, free fatty acid and a germination test are all included in Delinting charges.
- More than 50 tons will be charged at \$950 per ton
- 20 - 50 tons will be charged at \$1,050 per ton
- Less than 20 tons will be charged at \$1200 per ton plus additional freight from gin to Brownfield Seed & Delinting
- Arrangements can be made for cotton seed to be delivered back to the grower, prior to April 15, 2022. Contact BS&D for delivery and pricing arrangements.
- **\$300 fee per delivery less than 10 pallets**
- Storage fees will come into effect on July 1, 2022 for 2021 Delinting. Monthly storage charges are \$15.00 per pallet.
- Non-Delinting Testing - Germ Only \$25.00, GMO Only \$275.00

The BS&D Breeding Program:

Brownfield Seed & Delinting, Inc. maintains a vigorous conventional cotton breeding program using traditional plant breeding methods. Traditional methods simply mean genetic improvement using non-GMO technology.

The focus for BS&D breeding program

Yield

Enhanced Emergence Performance (EEP)

Cold tolerance which allows for earlier planting dates

Disease & Insect resistance

Fiber & end use quality



The BS&D Breeding Team:

David L. Bush, Ph.D.: Dr. Bush serves BS&D as the senior advisor to the breeding and quality assurance programs. In 47 years as a private cotton breeder, trudging innumerable cotton fields and test plots, Dave has seen just about anything that can happen to a cotton plant or crop at least once. He likens his job at BS&D to a dusty, dog-eared old test book.

Branden H. Watson: A farm boy from Memphis, TX., Branden is over day to day operations for the BS&D breeding program. Educated at Oklahoma State University with a BS degree in Plant & Soil Sciences and an MS in Crop Production. Branden learned the theory and practice of conventional plant breeding by working in OSU's world class wheat breeding program. He has brought much diverse knowledge to the BS&D breeding program.

Milton Southall: Milton has been a row-crop farmer, seedsman and cattle breeder since his mother put him in long pants. He runs the BS&D Mid-South location near Covington, Tennessee. Milton is tasked with breeding a gene pool of early maturing, non-determinant cotton lines that will be used to establish conventional planting cottonseed markets in the Mid-South, central and south Texas and the Texas Rolling Plains.



Brownfield Seed & Delinting History

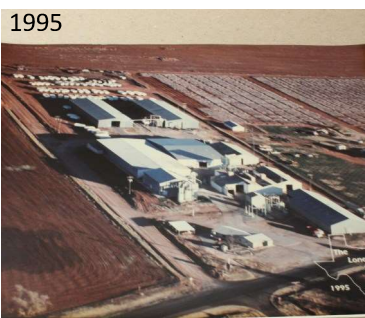
S

tarted in 1959, Tommy Hicks, Hugh Thomas, and Don Thrash, BS&D was there from the start of the delinted cotton-seed market. BS&D started with a tradition of producing the highest quality and most economic seed possible. Although the marketplace, economics and technology have changed, 61 years later we still provide the highest quality cottonseed at the best prices.

Tommy Hicks was a leader and visionary at Brownfield Seed from 1959 until he sold his interest in 2007. In his 48 years, he oversaw the building of the original plant, the change from sulfuric to hydrochloric acid, and 6 expansions.

The first change came in 1968, when the plant was converted to gaseous HCL. This posed less of a risk of contamination than the old sulfuric acid method. It was better for the environment and did not pose the risk of contaminating the ground water. The business continued to grow and in 1969 warehouse 2 was built to hold the increasing amount of cottonseed being delinted.

After the excellent cotton year in 1973, warehouse 3 was built to handle increasing seed storage for farmers. As cotton acres increased so did the warehouses to handle the increasing demand, warehouse 4 in 1976, and 5 in 1979. During this time BS&D began developing its own cottonseed varieties. The BS&D varieties were born and bred for the extreme West Texas environment. Plants that can withstand harsh conditions and that are storm proof as possible at harvest time.



In the early 1980's, extra delinting for large companies made the expansion of warehouse 6 (1982) and 7 (1983) necessary. BS&D continued delinting farmer, seed companies, and its own varieties through the 1980's and 90's. The company operated at an adequate level until 2002, when the prevalence of PVP seed varieties caused a massive decline in a farmer owned and caught seed.

In 2007, Tommy Hicks helped the current ownership get started in the business. Assuring the continuation of the company by a new generation, while maintaining the same high standards and morals that Mr. Hicks had always operated under. In 2013, BS&D began introducing new, updated conventional seed lines to meet the needs of dry land and organic producers. 224 and 598 have been two exceptionally well-adapted varieties for Texas. Since 2017, partnerships with seed companies and breeders have allow BS&D to let farmers return to catching their own seed therefore lowering costs. Also helping producers find a solid agronomic package.

BS&D will continue to breed cotton that helps the U.S. farmer. Our new lines like the X-series, and Tonbuster, along with partnerships with Cotton Inc., Texas A&M, and Seed Source Genetics. The future looks bright for BS&D, and all U.S. cotton producers.

"Our passion has always been cotton"



Chemical Control for Conv

Pre - Plant Options

45-60 days prior to plant

- **Valor** (Group 14)
- **Gramoxone / Paraquat** (Group 22)
- **Glyphosate** (Group 9)
- **2, 4-D Amine** (Group 4)
- **Mechanical Operation**



The key to non-treated cotton is to make sure you have no weed pressure going into planting.

Pre-Plant Options

30 days prior to plant

- **Treflan/Trifluralin/Prowl** (Group 3)
- **Prowl** (Group 3)
- **Diuron / Direx** (Group 7)
- **Reflex/ Foma** (Group 14)
- **Valor/ Panther** (Group 14)



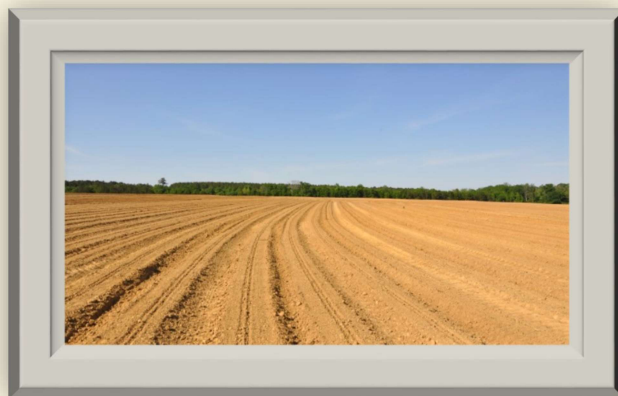
Applying herbicide requires even incorporation at about 3 inches deep, with disk, spring tooth, and etc. If you don't incorporate you will likely have pockets of weeds.

Conventional Cotton Production

Post Plant / Pre Emerge

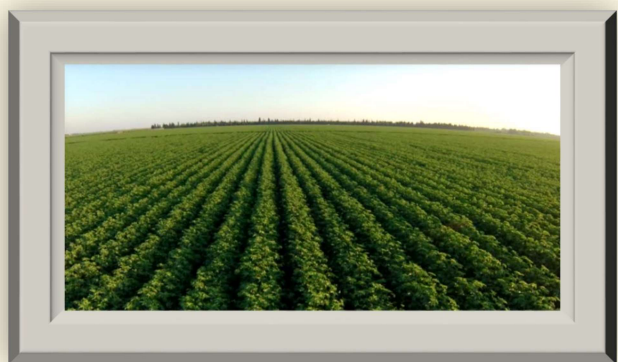
Maintain and control the seed before it's a weed

- Treflan/Trifluralin/Prowl (Group 3)
- Staple (Group 2)
- ♦ Diuron/Direx (Group 7)
- ♦ Prowl/Treflan/Direx
- ♦ Caparol (Group 5)
- ♦ Reflex/ Foma (Group 14)
- ♦ Sinister (Group 14)



Post-Plant / Over Top Options

- Dual Magnum (Group 15)
- Outlook (Group 15)
- Warrant (Group 15)
- Staple (Group 2)
- Envoke (Group 2)



When making herbicide recommendations, consider the use of multiple herbicide groups or chemistries for targeting weeds and reducing the risk of herbicide resistance in problem weeds.

We at Brownfield Seed & Delinting (BS&D) would like to Thank You growers for looking at the options BS&D is bringing to your farm. We strive to be the best delinting company you will experience. Our company is only as strong and successful as our growers. Please let us know how we can assist you.

Pleasure doing business with y'all.



Brownfield Seed & Delinting
1704 State Hwy 137 / PO Box 608
Brownfield, Texas 79316
(806) 637-6282
www.brownfieldseed.com