

2022-2023 Annual Report





Shelterhouse
SERVE • HEAL • EMPOWER

Table of Contents

Letter from the Executive Director.....	2
Shelterhouse Services.....	4
Crisis Hotline.....	5
Emergency Shelter.....	6
Counseling Program.....	7
Legal Advocacy.....	8
Sexual Assault Nursing Examinations.....	9
Client Testimonials.....	10
Shelterhouse Resale Shop.....	11
2023 Healing the Hurt Award Recipients.....	12
Shelterhouse in the Community.....	13
Our Volunteers.....	14
Raising Funds to Empower Survivors.....	15
Shelterhouse Midland Restaurant Week.....	16
Financials: Expenses & Revenue.....	18
Thank You to Our Donors.....	21

VISION:

A community that
cultivates the right
to **self-determination,**
safety, and a life free
from violence.

Letter from the *Executive Director*




Dear Shelterhouse Community,

I am thrilled to present to you the Annual Report for Shelterhouse, covering the period of October 1, 2022 to September 30, 2023. As we reflect on the past year, I am filled with gratitude for the incredible strides we have made towards fulfilling our mission of serving, healing, and empowering those affected by violence. Together, we have continued to work towards our vision of creating a community that cultivates the right to self-determination, safety, and a life free from violence for all.

I am particularly proud to highlight some of the remarkable achievements we have accomplished over the past year. One of the most significant milestones was the establishment of our Sexual Assault Nurse Examiner (SANE) room, which has provided crucial sexual examinations to survivors throughout Midland. This specialized service has been instrumental in ensuring survivors receive compassionate care and support during their most vulnerable moments. Additionally, I am delighted to announce that we expanded our SANE services to our Shelterhouse office in Gladwin early in 2024, serving the rural northern region with this essential service. By bringing SANE examinations closer to those in need, we are removing barriers such as time and transportation issues, ensuring that survivors have access to the care they deserve.

We continued to collaborate with local organizations, law enforcement agencies, and community leaders to advocate for policies and practices that prioritize the safety and well-being of all individuals. Through education and outreach initiatives, we sought to raise awareness about the prevalence of violence in our society and promote a culture of respect, empathy, and equality.



As we look ahead to the future, I am filled with optimism and determination. Together, we will continue to work tirelessly to create a world where every individual feels safe, valued, and empowered to live their lives free from violence. I am deeply grateful to our dedicated and passionate staff, board, volunteers, donors, and partners for their unwavering support and commitment to our mission. It is because of your generosity and compassion that we are able to make a difference in the lives of so many.

While I only joined the Shelterhouse team in September, 2023, I've already been blown away by the brave survivors making strides towards creating safer, happier, and healthier lives, the compassionate employees dedicated to empowering survivors along every step of their healing journey, and the exceedingly generous community that uplifts and supports our clients as they begin to heal.

The work we do here would not be possible without the ongoing support and collaboration of our community in Midland County, Gladwin County, and beyond. Whether you have invested a financial gift, given an in-kind donation, attended a Shelterhouse fundraiser or event, or simply shared in our mission on social media - you have been part of survivors' support system, and that community support can be transformational.

Thank you for your continued trust and belief in the work of Shelterhouse. Together, we will build a brighter and safer future for all.

With warmest regards,



Ellen Lynch
Executive Director

Services

All Shelterhouse services are free and confidential to any survivor regardless of age, gender identity, sexual orientation, race, ethnicity, ability level, or socioeconomic background.

- 24/7 Crisis Hotline
- Emergency Shelter
- One-on-one Counseling
- Support Groups
- Legal Advocacy & Court Accompaniment
- Sexual Assault Nursing Examinations
- Transitional Supportive Housing
- Parental Support
- Play Therapy for Young Survivors
- Community Education & Awareness

In 2022-2023, Shelterhouse served 911 clients, including 249 children.



5

Crisis Hotline

6,105

calls to Shelterhouse's crisis hotline
(30% increase from 2021-2022)

Shelterhouse's crisis hotline operates **24** hours a day, **7** days a week, **365** days a year. No matter when a survivor contacts us seeking services, a kind and compassionate advocate is always on the other end ready to connect them with the resources they need to heal. Whether a survivor is calling in their moment of crisis or years down the line as they seek full-person healing, Shelterhouse is here to support them.

2022-2023 saw a 30% increase in calls to our crisis hotline, in part due to the introduction of texting and webchat options for survivors who cannot safely call Shelterhouse's hotline.

Now, Shelterhouse's crisis hotline is more accessible than ever before, with translation services for over 200 languages (including ASL) so that every survivor, regardless of language or ability level, can seek free and confidential support following domestic violence or sexual assault.



Call : 877-216-6383

Text: 989-200-5122

Webchat:
resourceconnect.com/shelterhouse/chat





6

Emergency Shelter

58
adults

5,285
nights of
safe refuge

47
children

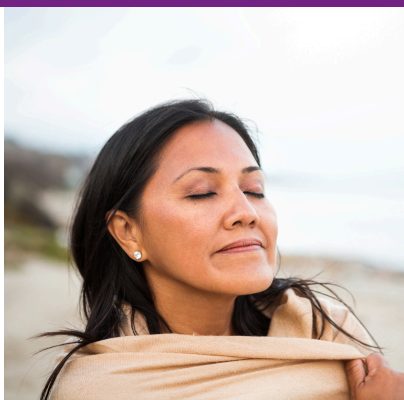
Shelterhouse offers free and confidential emergency shelter to survivors of domestic violence, sexual assault, stalking, and human trafficking that need temporary refuge.

Our shelter has 15 individual rooms and 48 beds able to accommodate survivors of all gender identities, as well as their minor children. Additionally, Shelterhouse is one of the few domestic violence shelters in the state of Michigan that allows pets to stay with their owners in shelter, providing all necessary food and veterinary care free of charge.

Here, survivors and their families can seek healing safely, privately, and comfortably as they seek to overcome the impacts of domestic & sexual violence. While in shelter, clients are also given access to community resources and programs that can later help them transition into new, safe housing following their temporary stay in our emergency shelter.

Transitional Supportive Housing Program

Shelterhouse offers numerous transitional supportive housing programs so that clients are able to transition into safe, self-sufficient housing while receiving financial assistance and continued advocacy. **In 2022-2023, 26 adults and 18 children were served through Shelterhouse's transitional supportive housing programs.**





7

Counseling Program

2,989

hours of individual counseling

1,274

hours of group counseling

Shelterhouse's Counseling Program includes both one-on-one sessions and support groups for survivors of all ages and backgrounds. Our counselors are certified in trauma-informed interventions and seek to meet clients where they're at in order to guide them along their healing journey.

Support groups are facilitated in order to build community among survivors and remind them that they are not alone, that people want to support them, and that healing *is* possible. Notable support groups offered in the 2022-2023 year include:

96% of clients reported they felt better able to achieve their individual goals after working with Shelterhouse.

- Trauma Recovery Empowerment Model (TREM)
- Male Survivors of Violence
- Voices (for girls ages 12-17)
- Intersections (for LGBTQIA+ survivors)
- Body Mind Connection (for female survivors of sexual abuse seeking to rediscover healthy intimacy).





Legal Advocacy

638

instances of
Civil Legal advocacy

924

instances of
Criminal Justice advocacy

Shelterhouse offers free legal advocacy to clients choosing to take legal action after experiencing domestic violence or sexual assault. However, Shelterhouse empowers survivors to make their own decisions regarding whether they'd like to involve law enforcement or the legal system - **all the choices are theirs.**

While Shelterhouse does not employ attorneys or offer official legal advice, our experienced court advocates offers a variety of legal services depending on a client's unique situation and needs:



"The biggest barrier we see as legal advocates is the **cost of attorneys**. With consultation fees, high retainer fees, and high hourly rates, an attorney can easily cost a survivor thousands of dollars. If a survivor cannot afford an attorney and their abuser can, it is another way an abuser can **control and intimidate a survivor through the court system.**"

Shelterhouse
Court Advocate

- Filling out divorce packets
- Filing for a personal protection order (PPO)
- Court accompaniment
- Support while writing victim impact statements
- Advocacy with law enforcement to improve system response to domestic & sexual violence

However, Shelterhouse faces a growing need for financial support to help empower survivors seeking legal representation.

In 2022-2023, Shelterhouse saw a 28% increase in survivors seeking civil legal support, and a 33% increase in survivors seeking criminal justice advocacy. These numbers highlight a great need for legal advocacy resources in the aftermath of domestic violence and sexual assault.





9

SANE Program

72

adult SANE clients

148%

increase in crisis calls
seeking SANE services

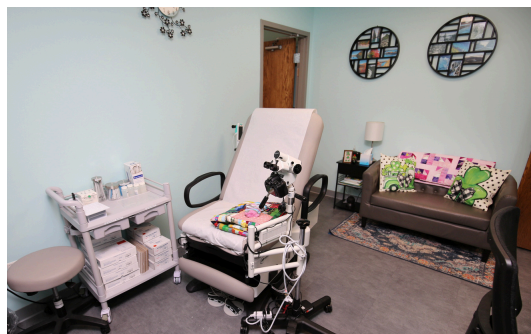
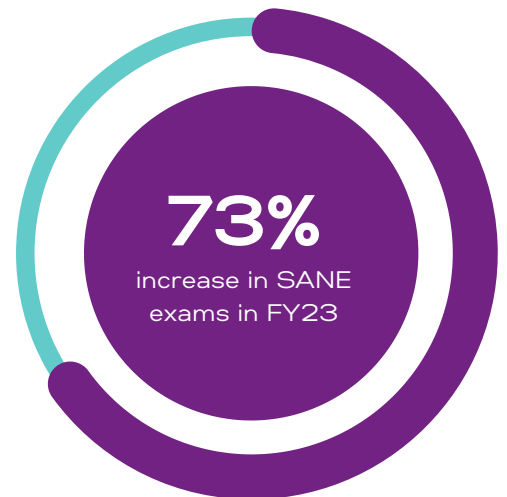
35

minor SANE clients

Sexual assault nursing examinations (SANE exams) are a critical healing service available to survivors of all ages and gender identities following sexual assault. During these exams, **all the choices are the survivor's**. A patient can choose to receive emergency contraceptives, HIV preventative medication, a toxicology test, head-to-toe injury assessment, and/or evidence collection to be used in a police report.

In 2022, Shelterhouse opened its first in-house SANE suite at our Midland location, increasing accessibility for survivors to receive free, confidential, and trauma-informed medical care after experiencing sexual assault. Since opening this new suite, Shelterhouse has seen a steep increase in SANE exams for both adults and children, suggesting that survivors are more likely to seek healing services when they know they can do so in a safe and survivor-centered environment.

Shelterhouse employs a staff of registered nurses specially trained to perform SANE exams and provide trauma-informed advocacy to victims of sexual assault. In addition, sexual assault response advocates work alongside these registered nurses to provide comfort to patients before, during, and after their exams, including connecting them with long-term healing services such as counseling, shelter, or support groups.



Survivors *Speak*

“

"The support given by staff is amazing. Everyone I have ever seen at Shelterhouse has been polite, understanding, and shows respect."

”

“

"I really don't know where I would be today without the support and assistance from Shelterhouse."

”

“

"I love that we have been able to work through so much more than just what I initially came here for. I feel like a completely new person."

”

FY23: 2022-2023

98%

of clients reported they knew more about healthy relationships

95%

of clients reported they have more strategies for enhancing their own, or their children's, safety

99%

of clients reported that they would strongly recommend Shelterhouse to a friend



\$8,000+
in loyalty savings

\$260,000+
in Shelterhouse
Resale Shop sales

22,000+
customers served

The Shelterhouse Resale Shop is a critical part of Shelterhouse's mission to serve, heal, and empower survivors of domestic violence and sexual assault. 2022-2023 was a year of change, beginning with the decision to close the Shelterhouse Outlet and focus solely on the Resale Shop itself. While this was a difficult decision, it has made a positive impact on the resources the Shelterhouse Resale Shop has available to our our customers and our clients.

At the Resale Shop, all proceeds outside of general operating costs come back to Shelterhouse to help support survivors of domestic violence and sexual assault, as well as the services available to survivors. In addition, Shelterhouse clients are able to shop for free at the Resale Shop in order to have a dignified and empowering shopping experience that allows them to choose the items they need/want most.



In 2022-2023, the Shelterhouse Resale Shop was blessed with **80+** volunteers who helped to receive, process, price, and hang donations. This support was greatly appreciated and helped our team to serve clients and customers to the best of their ability.

The Shelterhouse Resale Shop was also honored as the "Best Resale Shop" in the Midland Daily News' 2023 Reader's Choice Awards, highlighting this store's community-wide impact.





Healing the Hurt Award Recipients

The Healing the Hurt Award recognizes an individual or group of individuals who have made outstanding contributions in addressing the difficult issues of domestic and sexual violence in our community.



Detective Brent Benzing from the Midland County Sheriff Department was the recipient of the Midland County Healing the Hurt Award in 2023.

“Benzing is a trailblazer in our efforts to enhance safety and support for victims of sexual assault and domestic violence,” said Wilson. “Brent is always there to learn, provide support, and try new approaches to make victims feel comfortable and safe as they come forward.” - Samantha Wilson, *Shelterhouse Sexual Assault Crisis Response Advocate*.

Detective Brent Benzing
& Samantha Wilson

Detective Sgt. Steve Townsend from the Gladwin Sherrif Department was the recipient of the Gladwin County Healing the Hurt Award in 2023.

“(Townsend) has become extremely knowledgeable – through many trainings and experience – in how best to support domestic and sexual violence victims. His leadership, empathy and commitment to trauma-informed services bring a vital component to our county's law enforcement practices.”
- Maureen Barney-McGuire, *Shelterhouse Court Advocate*.



Detective Sgt. Steve Townsend
& Maureen Barney-McGuire

Shelterhouse in the Community

Shelterhouse's mission to serve, heal, and empower survivors of domestic and sexual violence is a community effort, and this agency has been blessed with dozens of wonderful partnerships and collaborations in 2022-2023!

From resource fairs, to community fundraisers, to informational presentations, our community has always been an integral part of Shelterhouse's goal of preventing abuse and violence while raising awareness for the free and confidential services available to survivors.

To all the community partners that attended presentations, supported fundraisers, or helped to share educational resources - **thank you for showing survivors that they are not alone, and that they have a community committed to helping them heal and thrive.**



Thank you to our Volunteers

Shelterhouse has been fortunate to have over 100 volunteers and thousands of volunteer hours donated by passionate and hardworking community members this past year.

Volunteers at the Shelterhouse Resale Shop helped to process, price, and display donations, while volunteers at our main Waldo Ave. facility helped with landscaping, food and donation organization, building projects, and community event facilitation.

Notable projects in 2022-2023 include the Midland Kiwanis Club building a swingset for young survivors, Lowes volunteers building a bike storage and shed for residential clients, and numerous Dow volunteer groups repainting all the walls in our residential hallways!



1,140 volunteer hours at the
Shelterhouse Resale Shop

88 volunteers at the
Shelterhouse Resale Shop

5,016 volunteer hours at Shelterhouse

112 volunteers at Shelterhouse

Raising Funds to *empower* Survivors

While Shelterhouse is predominantly funded through state and federal grants, there are many client needs and operational costs that this agency must cover out-of-pocket.

We are blessed with a community of supporters who generously give year after year to help fund critical programmatic and operational costs at Shelterhouse. Our mission of serving, healing, and empowering survivors wouldn't be possible without this ongoing financial support, and we continue to be overwhelmingly grateful for the support and collaboration of numerous community partners.

In 2022-2023, your generosity helped to raise **over \$450,000** to help empower survivors, and **143 new donors** joined the Shelterhouse family. This important work wouldn't be possible without the philanthropy and compassion of community members just like you.

In 2022-2023, community members, organizations, and agencies donated **\$90,000+** worth of in-kind materials such as food, toiletry items, homegoods, and everyday necessities. These donations are critical as Shelterhouse seeks to provide basic needs assistance to both residential and non-residential clients.



Shelterhouse

MIDLAND RESTAURANT WEEK



16

From April 22 through April 29, 2023, dozens of local restaurants, cafes, bars, and small businesses came together for the second annual Shelterhouse Midland Restaurant Week!

This culinary celebration of hope and healing, chaired by Dr. Lydia Watson from MyMichigan Health, invited community members to dine in and order takeout from local establishments across Midland County to help raise funds for survivors.

Additionally, Shelterhouse was blessed with over a dozen volunteers who helped to facilitate this event, including managing silent auction donations, advertising and building awareness on social media, and communicating with participating restaurants!

THANK YOU FOR EMPOWERING SURVIVORS WITH US!



Shelterhouse

MIDLAND RESTAURANT WEEK



17

**Thank you to our participating restaurants and
generous 2023 Midland Restaurant Week sponsors!**

Aviator Cookie Company
Beer & Brats at Mills Country Club
Biggby Coffee
Boomerang Coffee Lounge
Brinstar
Cafe Zinc
Cottage Creamery
Crazy Vines Winery
Decker's Sports Bar
Duel Bar
Egyptian Kosher
Enjoy! Bakery
Fricks Sports Bar
Grape Beginnings Winery, LLC
Gratzi
Grove Tea Lounge
Idli Dosa
Live Oak Coffeehouse
M's Cafe

Maru Sushi & Grill
Meal Prep Proz
Midland Brewing Company
Mi Element Grains & Grounds
Molasses Smokehouse & Bar
ONE eighteen
Pizza Baker, LLC
Pizza Sam's
Proper Taco
Stranded Yarn & Coffee
The Coffee Grounds Shoppe
The Gourmet Cupcake Shoppe
The Taste of Midland
Three Bridges Distillery & Taproom
U.S. Coney and Cone
Whichcraft Taproom
Winner Winner
YaYa's Flame Broiled Chicken

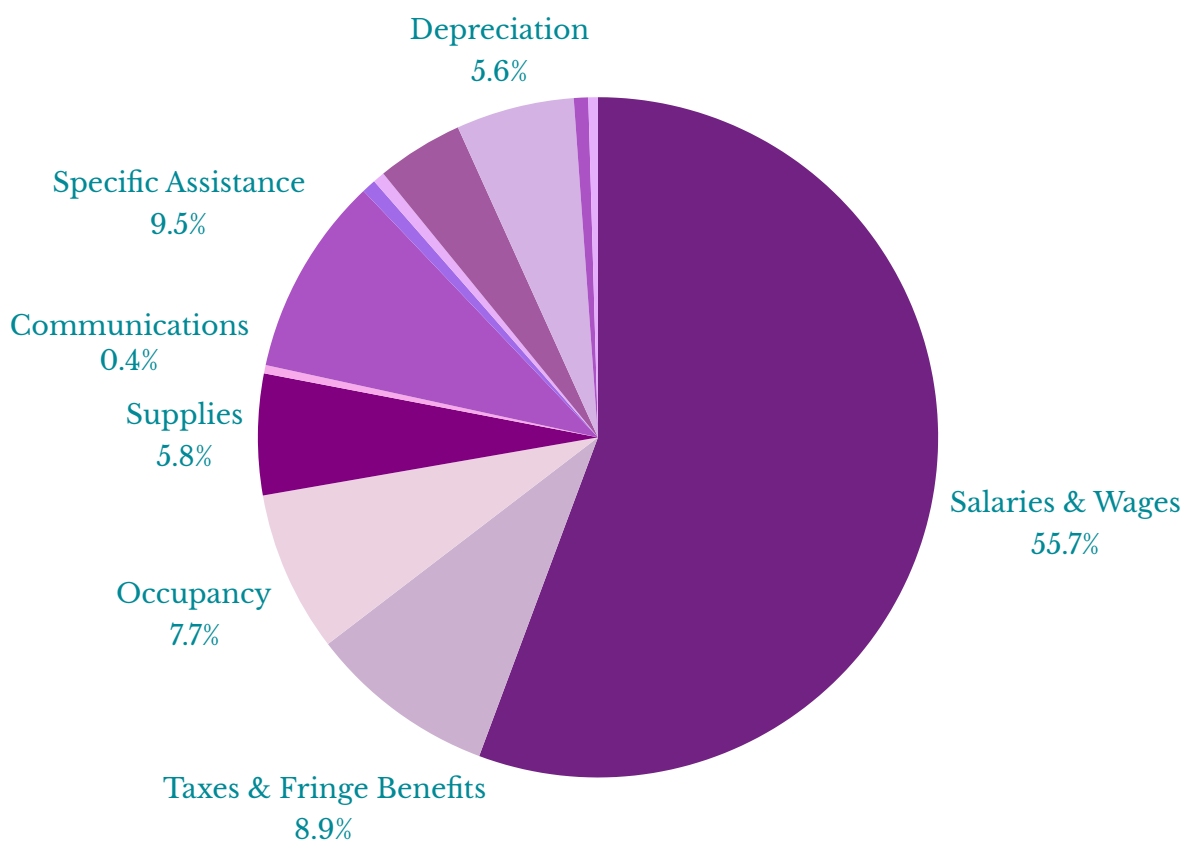


GAVIN & ASSOCIATES
Investments and Financial Services



Financials:

Expenses

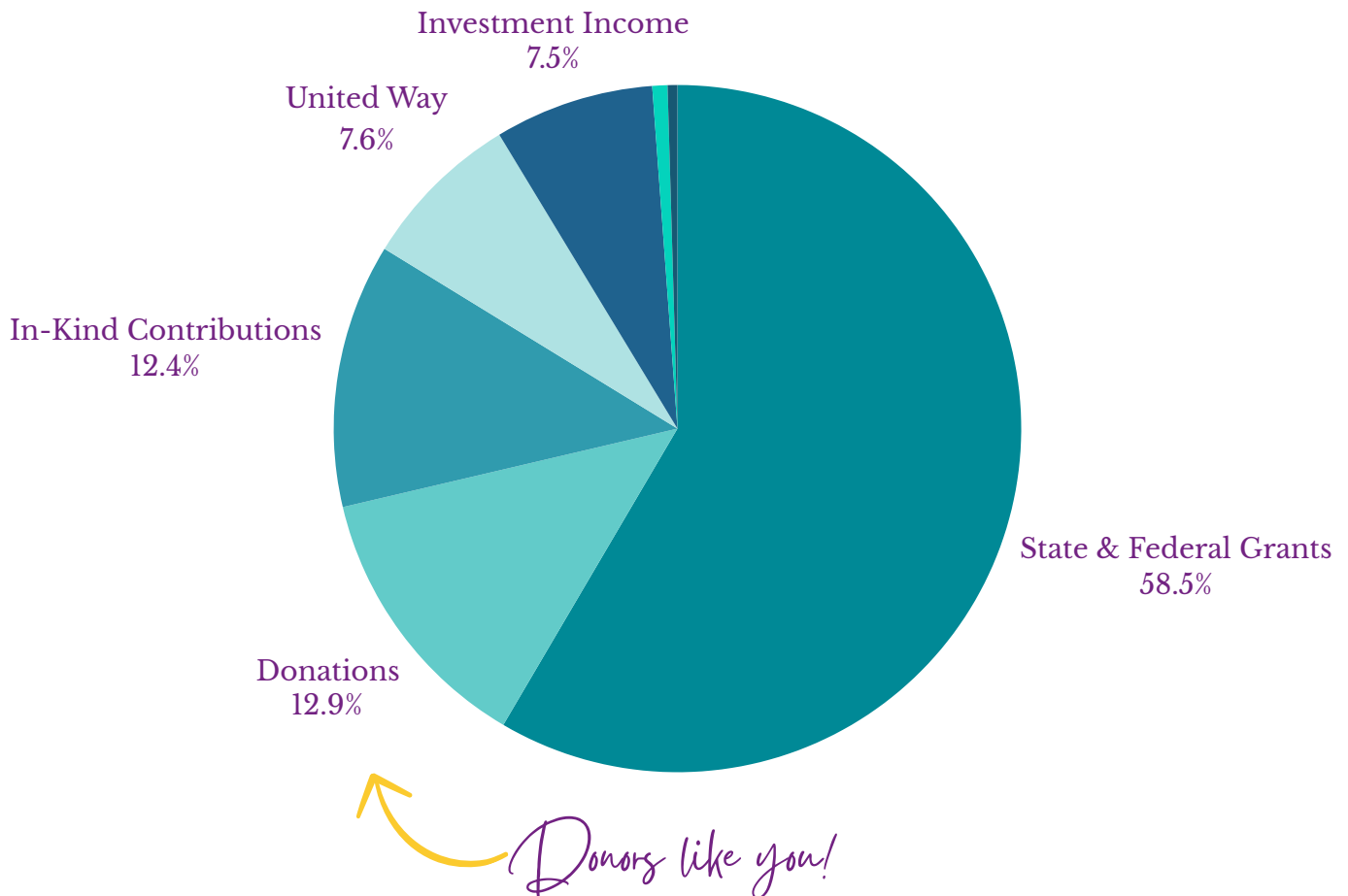


Salaries & Wages	\$1,699,099
Taxes & Fringe Benefits	\$272,329
Occupancy	\$233,744
Supplies	\$175,479
Communications	\$12,109
Specific Assistance	\$289,281
Staff Development	\$20,589
Transportation	\$17,065
Professional Fees	\$125,679
Depreciation	\$171,480
Fundraising	\$20,784
Other	\$13,926
Total Expenditures	\$3,051,564

Financials:

Revenue

State & Federal Grants	\$1,773,938
Donations	\$390,772
In-Kind Contributions	\$377,305
United Way of Midland County	\$225,000
United Way of Clare & Gladwin Counties	\$4,600
Investment Income (Loss)	\$227,535
Other	\$21,675
Total Revenue	\$3,020,825







**Thank You
to our
2022-2023
Donors!**

2022-2023 Donors

1st State Bank
 Elizabeth Abbott
 Karen Adamcik
 Kelly Aguilera
 All Seasons Heating and Cooling
 Betsy Aller
 Allied Group Fitness
 Alpha Chi Omega Sorority-Zeta Rho Chapter
 Jonathan and Heather
 Barbara Anderson
 Christine Anderson
 John Anderson
 Andy and Nathan's US Conee and Cone
 Aptargroup
 Assumption of BVM Parish
 Auburn United Methodist Church
 David Auckerman
 Aviator Cookie Company, LLC
 Clyde Babcock
 Donna Babcock
 Suzanne Babcock
 Madeline Bahling
 Benny & Kathy Baker
 Daniel Baker
 Lynn Baker
 Mark Baker
 Samuel Baker
 Linda Bakke
 Alison Baldree
 Mary Baldree
 Candy Balis
 Kathy Bank
 Suzanne Barbu
 Nancy L. Barker
 Donald J. Baublitz
 Rod Bauer
 Bavarian Inn Lodge
 Amy Beasley
 Jim Beck
 Jeff Beckwith
 Leslie Bedrosian
 Joel Beeck
 Ike Beehr
 Beer & Brats at Mills Country Club
 Charles Begian
 Dennis Begue
 Zachary Behrman
 Karen Beikert
 Carol Bejarano

Jeffrey Bennett
 Gary Berk
 David Berry
 Denise Berry
 Cheryl Beyer
 Bierlein Companies, Inc.
 Biggby Coffee
 Karrie K Bixler
 Brad Blasy
 Nancy Blasy
 Blessed Sacrament Parish
 Clifford Block
 June Block
 Boomerang Coffee Lounge
 Lynn Booms
 Boulder Creek at Midland COA
 Shannon Bowen
 Jenifer Boyer
 Donald Boys
 Donald Brack
 David Brausch
 Thoralf Brecht
 Patricia Brewer
 Annette Bridgewater
 Brinstar Arcade Bar & Grill
 J. Dee Brooks
 Karen Brooks
 Alan Brown
 Claudia Brown
 Ralph Brozzo
 Celaine Brumagen
 Pam Buchholz
 Dennis Buckler
 Linda Burgert
 Gary Buske
 Eleanor Butcher
 Mark Butcher
 Cafe Zinc
 Sharon Caldwell
 Steve Calkins
 Elizabeth Camp
 Bruce W. and Sarah E. Campbell
 Linda Campbell
 Hal Canfield
 David Carr
 Case Systems
 Joan Cashin
 Renee Castellon

George Challener
 Jewel Chatman
 Zhongbi Chen
 Child and Family Services
 Christian Celebration Center
 Anthony Cinadr
 Cinnamon Indian Cuisine
 Basil Clark
 Jessie Clark
 Dick Clemmer
 Leonard Clevenger
 William Cline
 Calvin R. Clore
 Shelley Cluff
 Carole Coffield
 Lori Collick
 Cheryl Collins
 Melvin Collins
 Nadine Collins
 Janice Collison
 Daniel Confer
 Consumers Energy
 Larry Cooper
 Corteva Agriscience
 Cottage Creamery
 Dana Courtine
 Amy and Michael Craig
 Kay Crawford
 Crazy Vines
 William G Cronk
 Mary Currie
 Jim Czap
 Diana Dalton
 Nora Daly
 Ann Darby
 Janet Darby
 Sandra Darland
 Kathy Dashiell
 Joan David
 Dianne C Davis
 John Davis
 Deloitte Services
 Tricia DeLong
 DeShano Community Foundation
 DeShano Companies
 David and Helena Devore
 Greg Dickson
 Dennis Diener
 Marcia Dilling

2022-2023 Donors

George S. Dillon Jr. Ann Disette Dive and Glide John Doering Richard Dolinski Mary Ann Dostal Stacy dostal Robert J. Dotson Dow High Pre-Voc/Woodshop Patricia Downey Michael and Dennis Doyle Laura Dufurrena David Dunn Michael Dutot Debra Eagle Tad Eastman Egyptian Koshery Mary Eichhorn Tricia Eidsmoe Beverly Ellis Gary Elza Dale Emeott Eldon Enger Judy Enger Enjoy! Bakery David Evans Margo Ten Eyck Jen Faber Fabiano Brothers, Inc. Faith United Methodist Church Paul Fancey Alice Faulds Amy Fee Lenette Ferguson Fidelity Charitable Andrew Finn First Baptist Church First Presbyterian Church First United Methodist Church Fisher Contracting Jim Fitterling Suzanne Fleet Mckenna Fletcher Floyd # 206 Gleaner Life Ins Society Cassandra Foley Jeffrey Fox Frankenmuth Insurance Darryl Frickey Fricks Sports Bar Julie Gamm Pamela Gandy	Gavin Financial Group Michael Gavin Barry George Alan Getzin Janna Getzin Peggy Gilstad Mike Giltrop Give Lively Foundation Givinga Foundation Gladwin Area Remote Control Airplane Club Connie Glave Glen Glawe Michael Glenn Linda Goltz Goodwill Industries Of Mid-Michigan Inc Grand Traverse Pie Company Grape Beginnings Winery Great Gifts, Arts, Antiques & Handmades Great Lakes Bay Michigan Works Great Lakes Safety Training Center Myron Greene Quinten Greiner Grove Tea Lounge Dianna Grove Judy Gunderson Michele Gunkelman Enrique Gutierrez Marcia Hahnfeld James Ham Susan Hannah Matt Hansen Polly Ann Hansen Sidney Hansen Alfred Hanus Frances Hartnagle Grace D. Haynes Marcia L. Haywood Cleo Heath Nancy Heffel Holly Hellebuyck Jean Heying Nancy Hieb Charles Hinman Karen Holbrook Raymond Holcomb Caroline Holland Richard Horbal Horizon Bank Mark Horness Dot Hornsby	Susan Hoshaw Sam E. Howard Teresa Howison Mary Huber Margaret Hucul Idli Dosa Isabella Bank Jacqueline Ivan Matthew Ivan J. Charles Wolohan Trustee Lorraine Jackson Carol Ann Jacobs Pankaj Jandwani Maureen Jarema Jazzercise Midland Anita H. Jenkins Janet Johnson Keith Johnson Tracy Johnson Jeff Johnston Bonnie Jones Elisabeth Jozwiak Deborah Kaiser Tsiuneharu Kawakita David Kempzell Elizabeth Kennedy Shari Kennett William Kent David Kepler III Dave Kepler Maria Khan Kim Bruce Ramona King Jeffrey Kipfmiller Gerald Kline Knights of Columbus Council #5280 Steven Koehler Chris Kok Thomas Kollig Kenneth Konst Jeff Kosch Mike Kozuch Kroger Lorie Ladziak-Thivierge Matthew Laming Daryl Landis Robert Lane Sheryl Lane Thomas Lane Michael Lanham
--	---	---

2022-2023 Donors

Ted Lascari
Bernadine Lasher
Linda Lauderbach
Leonard Lawry
Larry & Cheryl Levy
Lance Lewis
Peter Lewis
Vada Lewis
Live Oak Coffeehouse
Patricia Looby
Darlene Looker
Sonya Loose
Carl Lovell
Tina Ludington
Edward Lundt
Jon Lynch
Emily Lyons
Sandra M Heaney
MAG Insulation
James Mahoney
Mainstreet Ventures INC.
Robert Malecki
Kristin M. Maloney
Joy Marchione
Bob Markey
Bradley Martin
Meaghan Martuch
Maru Sushi & Grill
Christy Mascarenas
Donald Masselli
Wallace Mayton
Marilyn Mazanec
Janice McCormick
Andrea McCrary
Kathleen McCreedy
Donna McDaniel
Amy McDonald
Patricia McDonald
Patrick McElgunn
Frank McEwan
Martin McGuire
Mike McHenry
Mary Jane McIntee
James McIntyre
Lisa McKenney
Robert McKowen
Mark McPherson
Meal Prep Proz
James and Dorothy Meissner
Members First Credit Union

Meridian Church of God
Meridian Church of God-Kids Club and Congregation
Michael Metiva
Greg Meyers
Mi Element Grains and Grounds
David Midkiff
Midland Area Community Foundation
Midland Brewing Company, LLC
Midland Church of the Brethren
Midland Kiwanis Foundation
Kimberly Miller
Russell Miller
Sharon Miller
Penny Miller-Nelson
Ann Moe
David Moeggenberg
Stephanie Moglia
Molasses Smokehouse + Bar
Anne Moll
Carole Monaghan
Robert Monica
Steven Morgenstern
James Morrone
Robert & Sharon Mortensen
M's Cafe
Katie Mulligan
Ellorie Murphy
Heather Murphy
Patrick Murphy
Joy Mussell
MyMichigan Health
David Nadolski
Jennifer Nash
Mary Neely
Craig Nelson
Network for Good
New Hope Community Church Of Midland
Justin Newby
Janae Newland
Kara Nic
Amy Nicholl
Margo Nielsen
Diane Nold
Karl Nold
Northwood University Youth Lead
Duane Nuechterlein
Rick Ohle
Kristin Olbertson
Edward and Indira Oskvarek
Lori Ostrowski

Jean Ott
Janine Ouderkirk
Our Lady Of Grace
Cheryl Owen
Sharla Paolucci
Suzanne Paris
David Parrillo
Mary Lee Parsey
Mike Parsons
Dave Pasek
Avani Patel
Thomas Peard
Sue and Bill Pearsley
Kenneth Pederson
Regina Pederson
PEO Sisterhood Chapter CB
Richard C. Peterson Jr.
Brian Pfeiffer
Philanthropy Babe
Donna Phillips
Marjorie Phillips
Lydia Watson Pinney
Mary Pitchford
Pizza Baker, LLC
Pizza Sam's
Mary Sue Plachta
Stacey Pollock
Steven Poole
Deb Poquette
Dolores Porte
Porter Free Methodist Church
Joyce Potoff
Irvin Potts
Rosemarie Potts
Deborah Poupard
Carl Price
Darcy Price
Proper Taco
Jeffrey Provenzano
Psi Iota Xi-Theta Tau Chapter
Norma Pyscher
Kenneth Randall
Bryan Reat
James Reif
Richard Reitz
Paula Renker
Cathy Richard
Lindsay Richardson
Jennifer Ringgold
Ricke Rittmaier

2022-2023 Donors

Todd & Julie Rivard
 Mary E. Roberts
 David Robison
 Albert Roeseler
 Joan Rogers
 Judith Rose
 Emily Rosenbrock
 Carol Rowe
 Ruth Ruhle
 Walter Rupprecht
 Phil Sarnacke
 Lynn Schefsky
 Walter Scherzer
 Nick Schikorra
 Sally Schmidt
 Ellie Schroeder
 Paul Schroll
 Renee Schroll
 Bill Schuette
 Bill G. Schuette
 Cynthia Schuette
 Schwab Charitable
 Herbert Scogg
 Jon Scott
 Letitia Scribner
 Sylvia M. See
 Senior Services
 Sequin Massage & Wellness LLC
 Mary Serich
 Servinski Sod Service
 Samantha Setula
 Richard Shadrach
 Amy Shaffer
 John Shaffer
 Felice Shafley
 Kevin Shaughnessy
 Daron Shaw
 Angela Sheets
 Mark Sikora
 Concetta Simpson
 Steven Sklenar
 Judith Slykhouse
 Glenn Smith
 Graham Smith
 Smith's Flowers and Gifts
 Larry and Jessica Sommer
 Tricia Sommer
 Pam Sones
 Beth Sorenson Prince

Tyler Sosa
 Randy Sosolik
 Earl Soules
 Mark Spalding
 Andrea Spaulding
 Spence Brothers
 Mark Spence
 Dennis Spender
 Marlene Spender
 St. Paul Lutheran Church/Ladies Aid
 Nick Stamas
 Audre Steck
 Derrell Steffen
 Christine Stiller
 Roger Stowell
 Stranded Yarn And Coffee
 Stray Or Stranded Animal Rescue (SOS)
 Catherine Strong
 Sue Ann Scheddel Admin Trust
 Elizabeth Sullivan
 Rosemary Swantek
 Synergy Jewelry LLC
 Kristine & Roger Szeszulski
 James Szollosi
 Rebecca Tanis
 Ronald Taylor
 Bartley Terrill
 Jacalyn Thayer
 The Alden & Vada Dow Family Foundations
 The Charles J. Strosacker Foundation
 The Coffee Grounds Shoppe
 The Doan Family Foundation
 The Dow Chemical Company Foundation
 The Duel Bar
 The Gourmet Cupcake Shoppe
 The Herbert H. and Grace A. Dow Foundation
 The Taste of Midland
 Thomas Trombley Electrical Contracting LLC
 Christopher Thompson
 Brandon Thornton
 Three Bridges Distillery and Taproom
 Three Rivers Corporation
 Christine Titus
 Sara Jane Titus
 Jane Toland
 Paula Tomaszewski
 Tops 720 Midland
 Beatriz Virginia Torres-Lopez
 Lora Tower
 Duane Townley

Kathleen Traylor
 Tri-Star Trust Bank
 Two Pines Tattoo Studio
 Stephany Tyra
 Howard Ungerleider
 United Church of Christ
 United Way - Auburn
 United Way of Central Indiana
 United Way of Clare and Gladwin Counties
 United Way of Midland County
 Unity of Bay City
 Julie Upleger
 Andrea Uptmor
 Lorrie Urbaniak
 Juan Venegas
 Veronica Cermak Foundation
 Laura Vosejpka
 Wagarville Community Methodist Church
 Vicki Walter
 David Walton
 Patricia Waltz
 Gwen Wamhoff
 Ann Ward
 Betsy Ward
 Rafe Ward
 Tim Ward
 Beth Ward-Donahue
 Ware-Smith-Woolever Funeral Home
 Melissa Weckesser
 Lynn Weimer
 Sandy Weimer
 Heather Wells
 Kristine Wertz
 Whichcraft Taproom
 Richard white
 Karen Whited
 Bill Wieland
 Marilyn Wildes
 Wildfire Credit Union
 Diane Brown Wilhelm
 James Wilson
 Michael Wilson
 Jo Winchester
 Betty Windover
 Wines for Humanity
 Winner Winner
 Cathy Wirsing
 David Wirth
 Pat Withrow
 Paul Witt

2022-2023 Donors

Women in Leadership - Great Lakes Bay Region

Alta and Ray Wright
 Erica Wright
 Wyndham Hotels and Resorts
 xixio.net
 Ya Ya's Flame Broiled Chicken
 Yeo & Yeo, P.C.
 Fielding Yost
 Diane Younk
 Deanna Zapolski
 Megan Zara
 Cheryl Zastrow
 Patricia Zeller-Orvis
 Pat Zimmerman
 Rachel Zimmerman
 Tina Zimmerman
 Zonta Club of Midland



United Way of Midland



**United Way
 of Clare and Gladwin Counties**

Shelterhouse is partially funded through the Michigan Domestic and Sexual Violence Prevention and Treatment Board (MDSVPTB), by the Department of Community Health (Crime Victims Services Commission - the Victims of Crime Act Grant), and the United Ways of Midland and Gladwin counties



Midland Office & Shelter
2500 Waldo Ave.
Midland, MI 48642

Gladwin Office
234 West Cedar St.
Gladwin, Michigan 48624

www.shelterhousemidland.org | info@shelterhousemidland.org



Crisis Hotline
877-216-6383

Crisis Textline
989-200-5122