

SPACE TO *think*



**ACCESSIBILITY
GUIDE**



CONTENTS

Welcome	3
Getting Here	4
Arrival	6
Accessible Entrance	6
Internal Access	7
The Lift	7
Getting Around	8
Registration Desk	10
The Concourse	10
Auditorium 1 and 2	11
The Halls	12
Meeting Rooms	13
Waterfront Rooms	13
The Café	14
The Green Room	15
Toilets	16
Communication	22
Sounds	23
Scents	24
Lighting	25
Furniture	25
Dietary Requirements	26

ACKNOWLEDGEMENTS

The Darwin Convention Centre acknowledges the Larrakia people as the Traditional Owners and Custodians of the land on which the Centre stands. We pay our respects to their Elders, past, present and future.

The Darwin Convention Centre would also like to acknowledge the support and assistance provided by Flare Access Pty Ltd in helping to prepare this Accessibility Guide.



WELCOME

The Darwin Convention Centre is world-renowned as the Northern Territory's premier business events venue.

Set within the lush tropical setting of the Darwin Waterfront Precinct, the Centre offers a stunning destination for local, national and international delegates to experience a conference, meeting or special event.

ACCESS AT A GLANCE



Accessible Toilet



Step Free Access



Payphone



Charging Point



Accessible Indoor Dining



Accessible Outdoor Dining



Accessible Parking



Water Fountains



Baby Changing Table



Sounds



Scents



Wheelchair Service



GETTING HERE



Travel by public transport

Bus

The nearest stop is for Bus Route 14 with the major stops of:

- Darwin Interchange
- Cullen Bay
- Darwin Waterfront.
- It's approximately 350 m away with a step-free route available.
- Darwin Interchange is approximately 750 m from the restaurant with step-free access to the Waterfront.

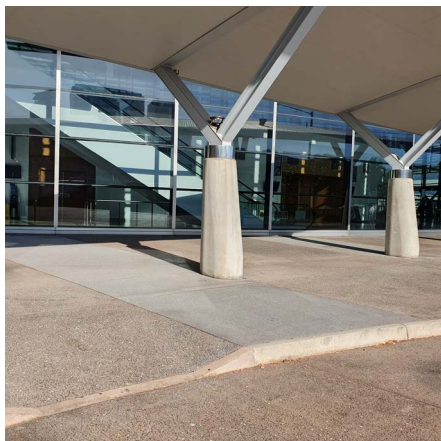
Free Waterfront Shuttle

- The Shuttle bus operates at peak lunch and dinner times; from 11:30am to 2pm and 4pm to 9pm – linking Stokes Hill Wharf, the Cruise Ship Terminal, residential apartments and hotels. The stop is approximately 15 m from the Centre on Kitchener Drive.
- The Shuttle is not wheelchair accessible.

GETTING HERE

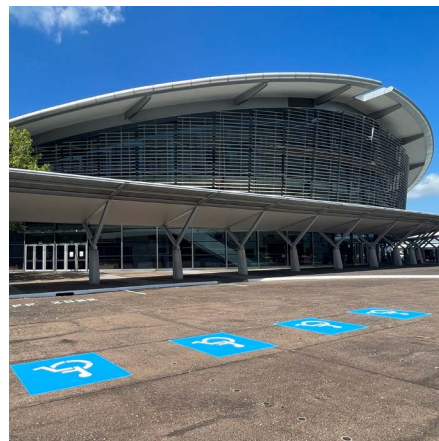


Travel by private transport



Drop-off Zone

- The Porte Cochere (Garawa) space at the front of the Centre is a drop-off point with a dropped curb.
- Markings on the concrete indicate the drop-off point.
- The route to the Centre has a path greater than 1000 mm wide and a level concrete surface.
- There is step-free access.



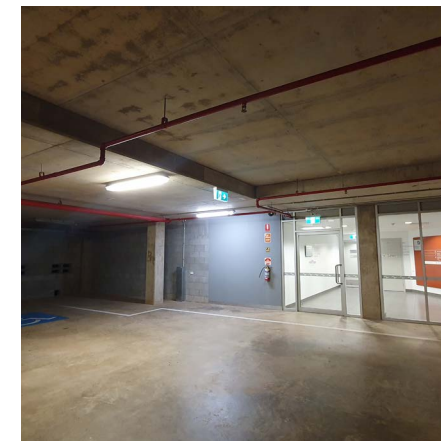
Porte Cochere (Garawa)

- Four accessible parking bays are located in the open car park at the front of the Centre.
- Parking in this area is restricted to Darwin Convention Centre clients



Open Car Park

- Schedule of rates:
- Mon-Fri 8:00am - 4:00pm
- 1 Hour \$2.00
- Max \$6.00
- Parking is free outside these hours.
- Payment can be made via card, cash, contactless and phone.



Darwin Convention Centre Basement Car Park

- There are three accessible parking bays located near lifts.
- The Centre is entered from the car park via outswinging doors and there is level access.
- Door width is greater than 800 mm
- It is open 24 hours and charged at a flat rate of \$5 per day.
- The basement car park is a cashless system. Payment can only be made via card.



ARRIVAL



Path to the main entrance

- The external terrain is concrete. From the frontage to the main entrance, there is level access.
- The path is 1000 mm wide, or more.

Main entrance

- There is a clear path of travel from outdoor to indoor areas.
- There are multiple open areas with manual doors with a width greater than 800 mm.

ACCESSIBLE ENTRANCE



Accessible entrance

- Located to the left of the main entrance is an automatic door with level access.
- This door leads to a foyer with a lift. Pass through the lift while remaining on Ground Level to access the Concourse.



INTERNAL ACCESS



What to expect

- Ground Level offers direct access.
- Level 1 can be accessed via a lift, escalator or stairs.
- Level 2 can be accessed via stairs, or a lift.
- All entrances and doors have level access and are greater than 800 mm.
- The type of entrance depends on the room or space.

THE LIFT



Wayfinding and Signage

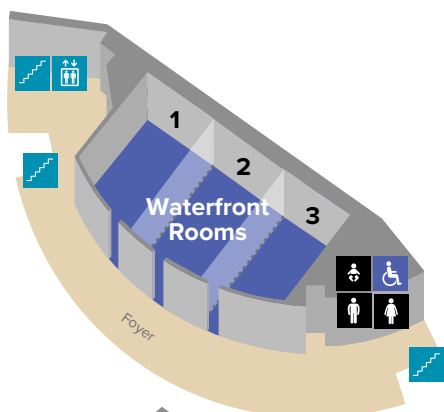
- There is clear signage throughout the Centre to indicate the location of the lifts.
- Floors are indicated with high contrast signage and Braille.
- Lift button height 1100 mm.

GETTING AROUND



Darwin Convention Centre Floor Plans

LEVEL 2



LEVEL 1



- Toilets**
- Baby Change**
- Accessible Toilets**
- Stairs**
- Escalators**
- Lift**
- Cafe/Bar**
- Pay Phone**
- Operable walls**

GROUND LEVEL

The following rooms can be divided:

Auditorium:
into two equal spaces

Halls 1 – 4:
into three spaces

Meeting Rooms:
into two or four spaces

Waterfront Rooms:
into three spaces



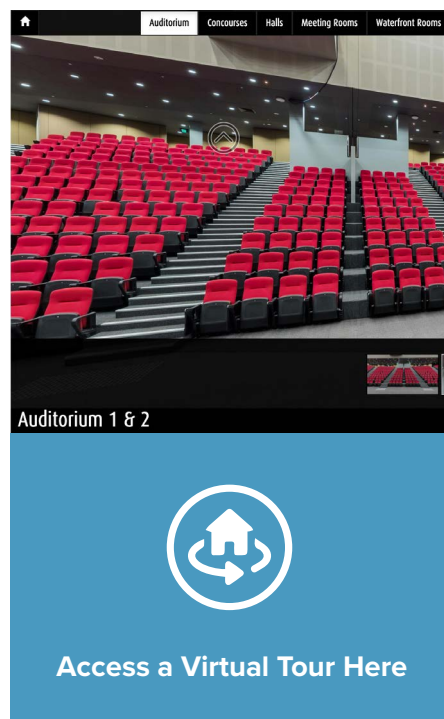
GETTING AROUND



What to expect

The Centre offers a range of event spaces including:

- An Auditorium with tiered seating for 1,200 delegates that can be divided into two equal spaces;
- Four column-free Halls with a total area of 4,000 square metres with capacity for 225 exhibition booths, 2,740 delegates' banquet style or 3,660 delegates.
- Three top-level Waterfront Rooms that can cater for up to 400 delegates theatre style or 250 banquet style; and
- Four Meeting Rooms that can accommodate up to 174 delegates.



- The layout of the rooms and the furniture used will depend on the event and the organisers preferences. If you have specific requirements regarding room layout or type of furniture, please contact the event organiser.
- Level 1 and Level 2 can be accessed via stairs, escalators or lifts.
- On each floor there are male and female toilets as well as unisex accessible toilets.
- Parent rooms are located on each floor.
- There are water fountains located throughout the venue at the entrance to each Hall, the Auditorium, Meeting Rooms and the Waterfront Rooms.
- Two payphones are located on Ground Level.
- All rooms have independent temperature control and can be adjusted on request to the event organiser.
- Flooring: Ranges from tiles and low pile carpet.
- There is high contrast between the furniture and flooring and a high contrast between walls and door frames.
- There are manual doors with a width greater than 850 mm for all event areas.
- There is a wheelchair service available for guests during events.



**LIVE
ENTERTAINMENT**



**BANQUET/ GALA
DINNER**



CONFERENCES



**MEETINGS /
SEMINARS**



**SPORT/ SPECIAL
EVENT**



EXHIBITION



**SPORT/ SPECIAL
EVENT**



REGISTRATION DESK



What to expect

- There is circulation space greater than 1000 mm.
- The reception desk has a height of approximately 900 mm.
- Flooring: Tiles.
- Lighting: During the day there is bright lighting as this space is filled with natural light. At night the lighting is adjustable.

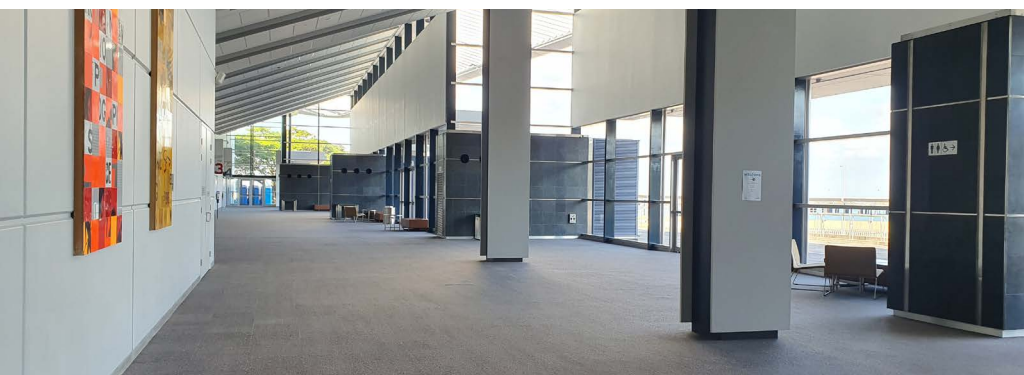


THE CONCOURSE



Clear floor space

- Clear floor space will depend on the event layout. Please contact your event organiser for specific details of the event layout.
- Flooring: Tiles leading to low pile carpet.
- Lighting: During the day there is bright lighting as this space is filled with natural light. At night the lighting is adjustable.



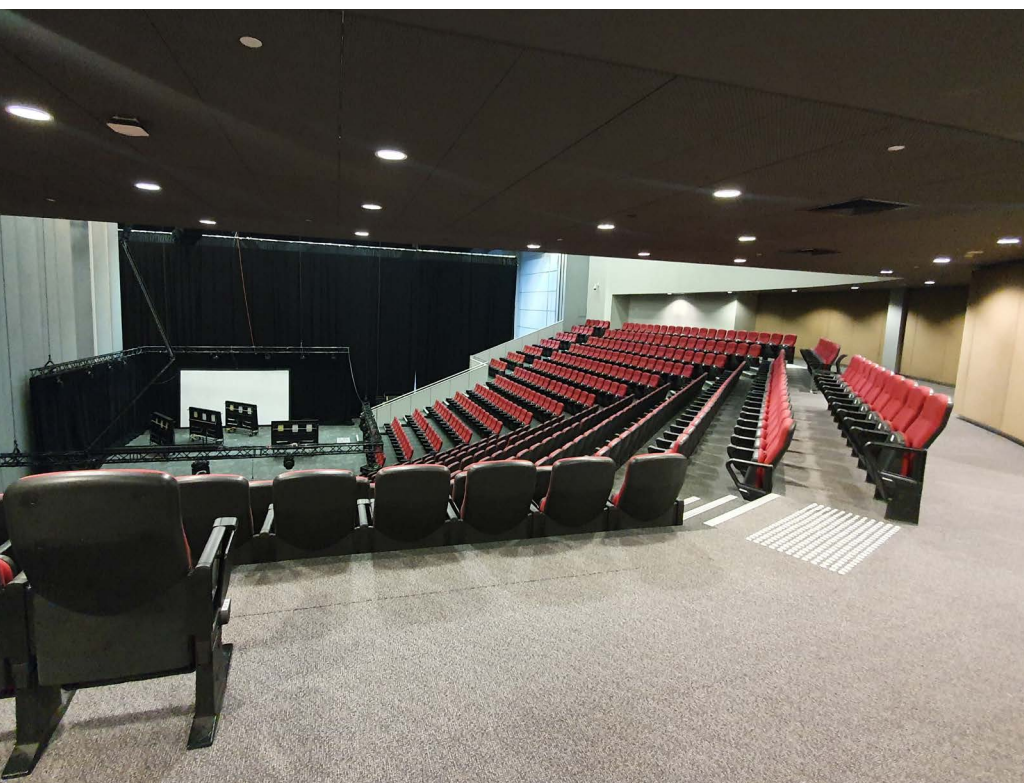


AUDITORIUM 1 AND 2



Accessible seating

- Modular seating allows the number and position of wheelchair accessible seating bays to be adjusted.
- Auditorium 1: Accessible modular seating is located at row C14 and D14 are adjustable for companion seating.
- Auditorium 2: Accessible modular seating is located at row G14.
- Wheelchair seating bays are located on Level 2 at the rear of the seating row C14 and D14.
- Alternating companion seating and accessible seating is limited.
- Easier access to standard seating is located at Section B, B1- B7 and Row A1 as a handrail is available along the entire row and is accessible for seating.



Furniture

- Seating: Seats flip back and have a height of 440 mm. Seats have armrests and a small table top that can swing back.
- Flooring: Low pile carpet in this area.
- Stairs: Have a handrail on the right or left depending on what side of the room you access the stairs.
- Stairs have nonslip stair edge nosings, high contrast and tactile floor surface indicators.
- Lighting is adjustable and will vary according to the event.



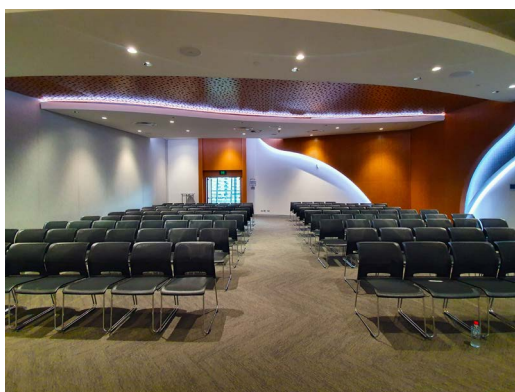
THE HALLS



What to expect

- The Halls are configured differently according to the event, please contact your event organiser if you require details of the room configurations and circulation space.
- Flooring: Low pile carpet.
- The type of furniture available will depend on the event, please contact your event organiser if you have specific requirements or requests.
- Lighting is adjustable and will differ according to each event.





MEETING ROOMS



What to expect

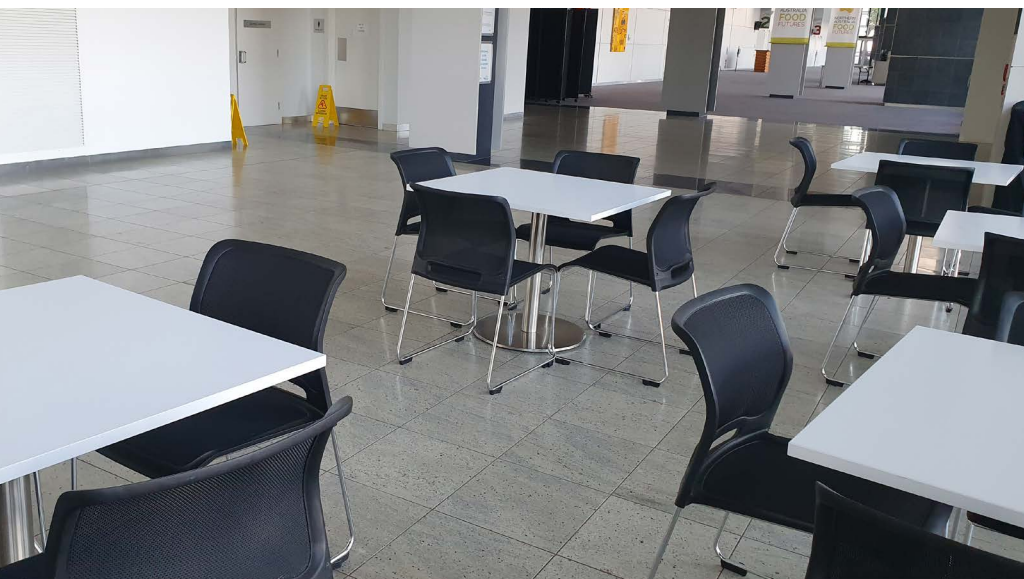
- The Meeting Rooms are configured differently according to the event, please contact your event organiser if you require details of the room configurations and circulation space.
- Flooring: Low pile carpet.
- The type of furniture available will depend on the event, please contact your event organiser if you have specific requirements or requests.
- Lighting is adjustable and will differ according to each event.
- An Induction Loop is available.

WATERFRONT ROOMS



What to expect

- The Waterfront Rooms are configured differently according to the event, please contact your event organiser if you require details of the room configurations and circulation space.
- Flooring: Low pile carpet.
- The type of furniture available will depend on the event, please contact your event organiser if you have specific requirements or requests.
- Lighting is adjustable and will differ according to each event.
- An Induction Loop is available.



THE CAFÉ



Clear floor space

- Located at the Ground Level Foyer.
- The main counter is 1300 mm and the payment counter is 930 mm.
- There is clear floor space around the counter, however, the area may become crowded depending on the event.

Furniture

- Tables: Pedestal tables have an under-table clearance of 700 mm. There is restricted knee and foot clearance.
- Seating: the chairs without armrests have a seat height of 460 mm.



THE GREEN ROOM



The Green Room may be available for use by the public as:

- A parent room
- A quiet space
- An all-gender bathroom.

Please speak with staff for an escort to the room.

What to expect

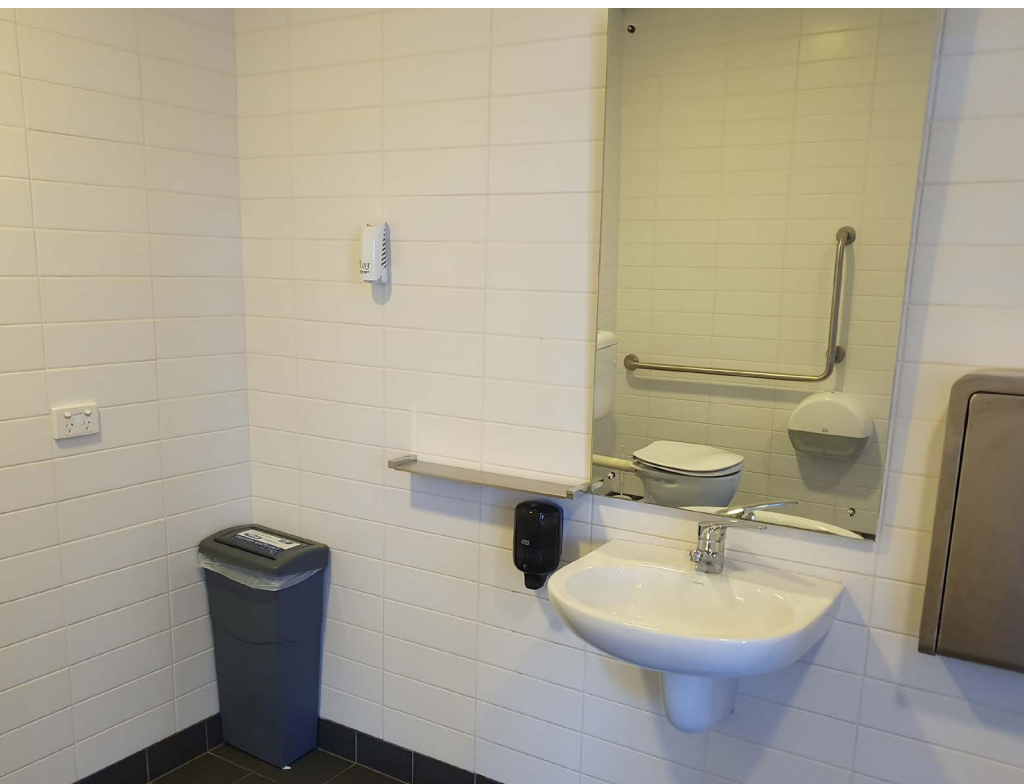
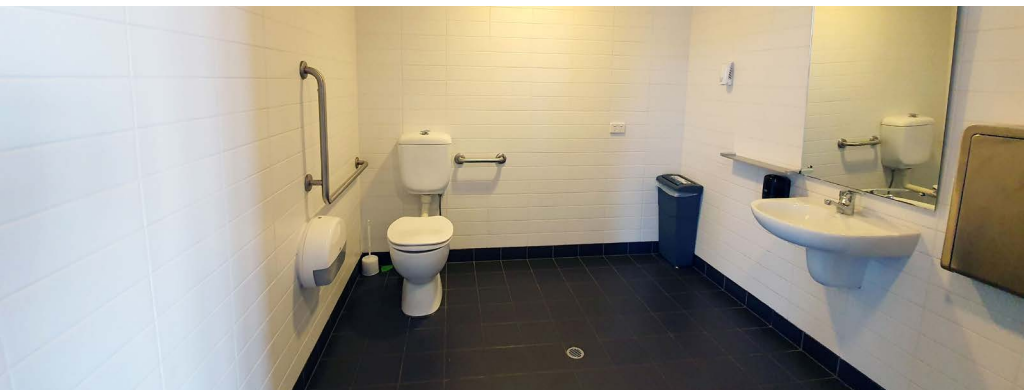
- The Green Room is located through the reception and office to the back of house.
- There is a standard Unisex Toilet with nil grab rails and restricted access.
- Shower recess with a hob of 125mm.
- Table and chairs.
- There is restricted circulation space in the bathroom.



TOILETS GROUND LEVEL



- The toilets are located between the Foyer and the Concourse.
- There is a Unisex RHS Accessible Toilet, as well as standard male and female restroom blocks.
- Flooring: Tiles.
- Wayfinding: Clear signage indicates the different toilets.
- The change table is located in the Accessible Toilet.
- Lighting in the cubicles and hand washing areas is automatic.



ACCESSIBLE TOILETS GROUND LEVEL



- The door of the bathroom swings outward to the left when entering.
- The door width is greater than 800 mm.
- There is a door lever handle to enter and exit the toilet with a height of 1000 mm.
- The toilet seat height is 460 mm.
- Rails are on the right-hand side of the toilet and to the rear on the left hand side with a height of 800 mm.
- The sanitary bin can be repositioned as required.

Hand washing area

- The basin is located in the cubicle with a lever action tap at a height of 800 mm.
- There is a power point to the left of the basin with a height of 1000 mm.
- There is knee and foot clearance under the basin.
- The soap dispenser is at 785 mm.
- There is a paper towel dispenser at 800 mm.
- Lighting in the cubicles and hand washing areas is automatic.



TOILETS LEVEL ONE



- The toilets are located on Level 1 between Gate 5 and 6.
- There is a Unisex RHS Accessible Toilet, as well as standard male and female restroom blocks.
- The door of the Accessible Toilet swings outward to the right when entering.
- The door width is greater than 800 mm.
- There is a door lever handle to enter and exit the toilet with a height of 1000 mm.
- The toilet lock is a traditional style toilet indicator bolt design at a height of 1170 mm.
- Flooring: Tiles
- Clear signage indicates the different toilets.
- The change table is located in the Accessible Toilet.
- Lighting in the cubicles and hand washing areas is automatic.

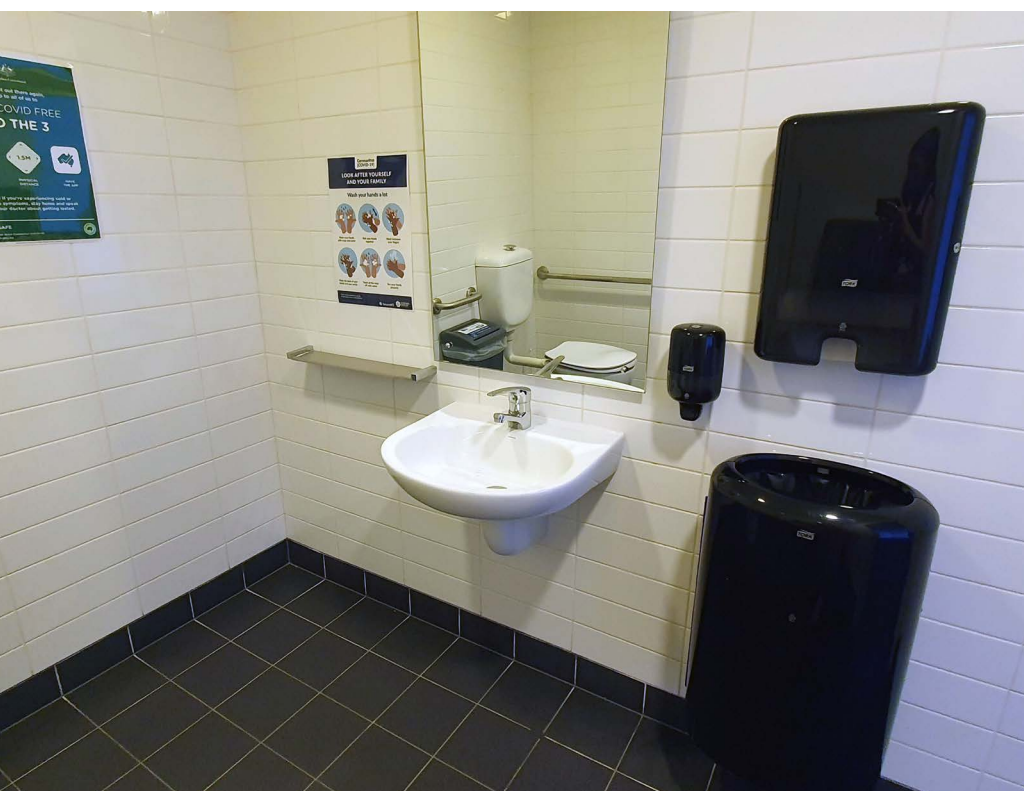


ACCESSIBLE TOILETS LEVEL ONE



Accessible Toilet

- The toilet seat height is 460 mm.
- Rails are on the right-hand side of the toilet and to the rear on the left hand side with a height of 800 mm.
- The sanitary bin can be repositioned as required.



Hand washing area

- The basin is located in the cubicle with a lever action tap at a height of 800 mm.
- There is knee and foot clearance under the basin.
- There is a paper towel dispenser at approximately 1000 mm.
- The soap dispenser is at 920 mm.
- Lighting in the cubicles and hand washing areas is automatic.



TOILETS LEVEL TWO



- The toilets are located to the right of Waterfront Room 3.
- There is a Unisex LHS Accessible Toilet, as well as standard male and female restroom blocks.
- Flooring: Tiles.
- Clear signage indicates the different toilets.
- The change table is located in the Accessible Toilet.
- Lighting in the cubicles and hand washing areas is automatic.



ACCESSIBLE TOILETS LEVEL TWO



- The door of the cubicles swings outward to the right when entering.
- The door width is greater than 800 mm.
- There is a door lever handle to enter and exit the toilet with a height of 1000 mm.
- The toilet lock is a traditional style toilet indicator bolt design at a height of 1170 mm.
- Flooring: Tiles

Accessible Toilet

- The toilet seat height is 460 mm.
- Rails are on the left-hand side of the toilet and to the rear on the right hand side with a height of 800 mm.
- The sanitary bin can be repositioned as required.



Hand washing area

- The basin is located in the cubicle with a lever action tap at a height of 800 mm.
- There is knee and foot clearance under the basin.
- There is a paper towel dispenser at approximately 1000 mm.
- The soap dispenser is at 920 mm.
- Lighting in the cubicles and hand washing areas is automatic.



COMMUNICATION



External Wayfinding

- The Centre's spaces are identified with large signs surrounding the venue.

Internal Wayfinding

- There is clear Wayfinding throughout with high contrast and Braille available on signage such as lift and bathroom signage.

Alternative Communication

- Please contact the event organiser for information about Auslan Interpreters, live closed captions and other alternative communication that will meet your needs.





SOUNDS



Café/ Bar

- Typical sounds from the bar include sounds from glasses and bottles.

Customers

- The volume of sound from patrons will depend on the number attending the event.

Music

- Music may be played at certain events and the volume can be adjusted depending on the event.



SCENTS



Food

- The main scents you will experience will be from the food served.

Hand Wash

- Mildly scented hand wash is located in the bathrooms.

Air Freshener

- Air Freshener is located in the bathrooms and may be used in other areas on occasion.



LIGHTING



- During the day there is bright lighting in the Foyer and Concourse as this space is filled with natural light.
- The light is reflective on the tiles and may create glare for some people who are sensitive to light.
- At night the lighting is adjustable.
- Lighting will depend on the event and strobe lighting may be used. Please contact your event organiser for more information.



FURNITURE



There is a wide selection of furniture available to event organisers. Please contact the event organiser for further information about the furniture available at the event you are attending and if you have any access requirements such as table height or type of chair.

We will do our best to provide the furniture that suits your needs.






DIETARY REQUIREMENTS



Please contact your event organiser for further information on the dietary options available and if you have dietary requirements.





This Accessibility Guide was designed and developed
in collaboration with Flare Access Pty Ltd.



**Flare
Access**

darwinconvention.com.au

**FOR FURTHER INFORMATION
PLEASE CONTACT:**

Sandra Lady CMP,
Director of Business Development
Darwin Convention Centre
E: slady@darwinconvention.com.au
P: 08 8923 9000