

LEADER'S GUIDE



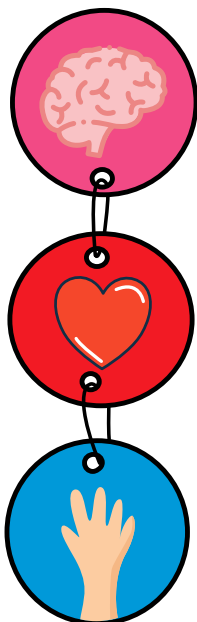
The Student Factor

SERVANT LEADERSHIP PROFILE TOOL



YOUR QUICK GUIDE

to Facilitating a Student Leadership Workshop



In today's world, students face unique challenges and opportunities. They're yearning for purpose, seeking ways to make a tangible difference, and longing for a faith that is real and impactful.

But are we equipping them with the tools to truly lead from a place of Christ-like service?

This 3-6 hour workshop for high school students is meant to be an interactive and deeply faith-developing experience. It was designed to meet the critical need for students to understand *how* to serve and *where* their unique gifts fit into God's plan.

As the facilitator, you'll approach these important concepts using the framework of the **Head, Heart, and Hand**, offering a complete guide to becoming an impactful servant leader in all areas of your life.

You'll help the students explore the concepts of **leadership**, utilize the **servant profile tool**, and equip themselves with the **armor of God**. Ultimately, this journey aims to cultivate a complete picture of Christian service: the **HEAD** forms us into a humble leader, whose understanding and wisdom guide our path; the **HEART** shapes us into a faithful servant, motivated by love and authentic giftedness; and the **HAND** equips us as a spiritual warrior, ready to stand firm and act with divine strength.



Before You Start

- Do the servant leadership profile yourself first. It's important that you're very familiar with the questions and understand what the results mean. It's also extremely important you know your own serving style.
- Be intimately familiar with the workbook from cover to cover, as well as the slide deck.
- In consideration of the amount of time you have for the workshop and the group of students you'll be facilitating, take time to choose the elements that are the best fit. You may have to prioritize which sections you do together, and which ones you leave to them to do on their own.
- Remember your goal: to develop leaders who model Christ. You're there to help the students see how they're wired to serve, and how to work better together.

1



WARM-UP
Exercise

Page 8 • 10–20 min

There are several ways you could lead this:

- Option A: Write words for *leadership, servanthood, servant leadership*—group sticky tabs, cluster themes.
- Option B: Post-it definitions on wall, circle-share, spot patterns.
- Option C (seasonal): “What plant are you?” with dollar-store sticks; pair-share, rotate twice.

Giving your testimony also works.



SECTION 1: *The Humble Leader*

Page 9 • 30 min

- Brainstorm leadership definitions (circle technique).
- Contrast with servant leadership.
- Emphasize: Jesus first, service next, title last.

2



SECTION 2: *The Faithful Servant*

Pages 10-13 • 30 min

- Introduce the growing model (God's garden, light in the world).
- Overview eight service styles—brief definition for each, one-slide visual.
- Key: grow by putting Jesus first.
- Can split into 8 lessons; discussion stretches time.

3



8 P'S PROFILE WORK

Pages 16-25 • 60 min

4

- Students complete 8 short surveys individually.
- Tabulate scores—identify top service style(s).
- Debrief in pairs/tables: “This is how I serve.”
- Scores feed later reflection and digging-deeper.



SECTION 3: *The Equipped Warrior*

Pages 28-32 • 30-60 min

- Bible study on Ephesians 6:10-18—putting Christ on = armor.
- Use as devotional, morning reflection, or retreat solo time.
- Reinforce summary: servant leadership = Christ's character made visible.

5



Commitment & Close

- My Promise: read aloud/group repeat; verbalize principles.
- Prayer: silent or read aloud.

Pages 34-35 • 15 min



Digging Deeper

Pages 38-43
15 min each

- Digging into Appendices A, B, and C
- Where am I on my journey with God? Self-reflection, share.
- Learning from biblical characters—match profile to Bible figure, discuss.
- Understanding your Servant Leader Profile
- Good for 8-week rollout.

OPTIONAL: 7

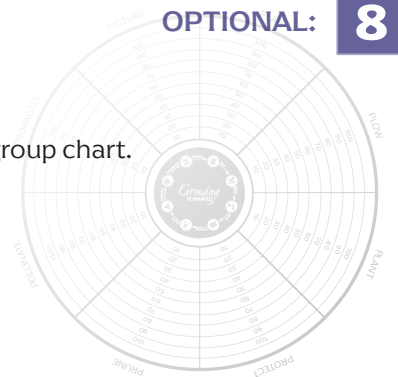


Team Dynamics

Page 44-45 • 30 min

- Digging into Appendices D and E
- Plot each person's scores on web/circle; display group chart.
- Talk defaults, team balance.

OPTIONAL: 8



Workshop Extras



Student Workbook



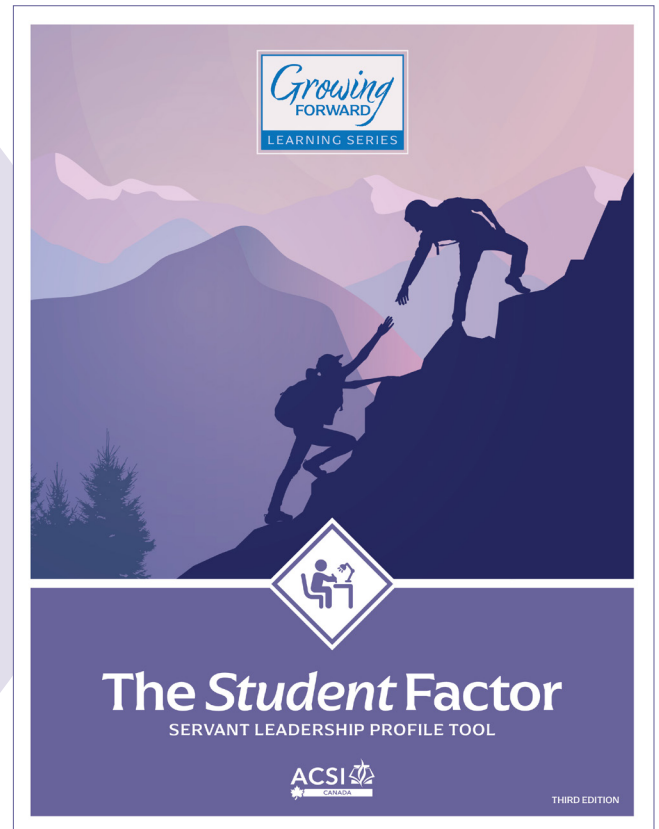
Certificate



Medallion

What's *Inside?*

Unpacking *The Student
Factor* Workshop Resource



A Tool Shaped by a *Vision*

Jesus first, service next, title last.

Servant leadership is Christ's character made visible in us—leadership, servanthood, and armor woven together.

A Structured *Flow*

The Humble Leader – define leadership; Jesus modeled humility.

The Faithful Servant – serving model with eight key areas; learners discover their default style.

The Equipped Warrior – Ephesians 6:10-18, the armor of God; put on Christ, stand firm.

Interactive Learning for Key *Outcomes*

- ♦ Learn what leadership is: Jesus first, service next, title last.
- ♦ Learn what it means to be a servant—pick up the towel.
- ♦ Discover their servant profile and explore the eight styles/elements
- ♦ Study Ephesians 6:10-18 and practice putting the armor on
- ♦ Understand: servant leadership = Christ's character made visible; putting on armor = putting on Christ = being a servant.
- ♦ See they can lead in different circumstances as they grow in Christ and “put Christ on” like armor.

Workbook *Tools* and Extras



Discussion & Reflection *Guides*

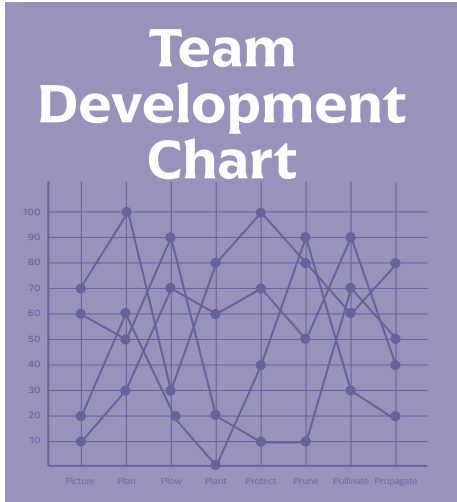
The 8x5 Armor Routine

*8 Moves in
5 Minutes
for Daily
Growth*

A self-reflection tool

*"Where am I
on my journey?"*

Learning from Biblical Characters



My Promise

A commitment & prayer
for putting on the armor

Workshop Extras

Ready to see your students thrive as Christ-centered leaders, and for your institution to benefit from their transformed hearts?

Contact ACSIEC today to book your workshop and equip your youth with the tools they need to shine: info@acsiec.org