



**RUTH
REINHARDT**
MUSIC DIRECTOR

**The Rhode Island Philharmonic Orchestra
Celebrates Ruth Reinhardt's Second Season as Music
Director**

2026/27 TACO Classical Series Announced

Featuring exciting guest conductors, artists and programs

Beethoven's "Pastoral" (Ruth Reinhardt, conductor)

Brahms & Beethoven (Ruth Reinhardt, conductor)

Ride of the Valkyries! (Christian Reif, conductor)

Romantic Chopin (Ruth Reinhardt, conductor)

Tchaikovsky's Fifth (Ruth Reinhardt, conductor)

Northern Lights – Nielsen & Sibelius (Benjamin Manis, conductor)

Spano Conducts Puccini (Robert Spano, conductor)

Ruth Conducts Beethoven's Missa Solemnis

(Ruth Reinhardt, conductor)

Plus, the perennial holiday favorite Handel's Messiah (Christine Noel,
conductor)

Amica Rush Hour Series Also Announced

Subscriptions available now

Single Tickets available July 20

PROVIDENCE, RI (April 22, 2026) – The Rhode Island Philharmonic Orchestra celebrates its 82nd season of programming with the 2026/27 TACO Classical Series and Amica Rush Hour Series, led by Music Director Ruth Reinhardt, now in her second season at the helm. Subscriptions are available now at tickets.rphil.org/subscribe. Subscribe now and receive free tickets to the Annual Gala Concert on May 30 with Daniil Trifonov!

The Rhode Island Philharmonic Orchestra's Music Director, Ruth Reinhardt; "an elegant, versatile and committed conductor in the search for expressive colors" (*Scherzo*) will conduct five of the programs this season. Programmatically, Reinhardt's interests have led her toward an in-depth exploration of contemporary repertoire, leading the symphonic and orchestral world into the 21st century. Strongly centered on European composers, with significant emphasis on women composers of the second half of the 20th century and early 21st century, she brings new names and fresh faces to many orchestras for the first time.

"Ruth Reinhardt embarks on her second season as Music Director in September and continues to chart an exhilarating course," said **David Beauchesne**, Executive Director of the RI Philharmonic Orchestra & Music School. "The coming season for the RI Philharmonic Orchestra reflects much of what we have come to admire about Ruth's artistic vision: programs that honor the great pillars of the symphonic canon (Beethoven, Brahms, Tchaikovsky, Sibelius) alongside works that make the concert hall a place for discovery. September's opening weekend includes the world premiere of Providence-based composer Eric Nathan's Violin Concerto alongside Beethoven's Symphony No. 6 – a pairing suggested by the composer. Julia Perry's long-overdue *Elegy for Brahms*, Joan Tower's *Fanfare for the Uncommon Woman*, Clara Schumann's rarely performed Piano Concerto, and John Corigliano's Percussion Concerto are all new to our stage and carefully paired with complimentary works that audiences love. As a result, Ruth's second season feels both essential and genuinely surprising.

We are equally thrilled to welcome Robert Spano back to the podium for an unforgettable evening of Puccini and Respighi, and to close the season with what I believe will be a once-in-a-generation performance of Beethoven's *Missa Solemnis* alongside the Providence Singers. This is a season that asks big questions and reaches for great heights; the Rhode Island Philharmonic at its best."

Opening Weekend:

Beethoven's "Pastoral"

Open Rehearsal: September 18, 2026, 5:30PM

TACO Classical Series: September 19, 2026, 7:30PM

Ruth Reinhardt, conductor

Yevgeny Kutik, violin

BARBER: *The School for Scandal*: Overture

ERIC NATHAN: Violin Concerto (*World Premiere, RI Phil Commission*)

BEETHOVEN: Symphony No. 6 (*Pastoral*)



Ruth Reinhardt



Yevgeny Kutik

The Rhode Island Philharmonic Orchestra's 82nd Season kicks off with **Beethoven's "Pastoral,"** a program as verdant and sweeping as its centerpiece, conducted by Music Director **Ruth Reinhardt**, and

featuring violinist **Yevgeny Kutik**. The evening begins with Samuel Barber's ***The School for Scandal: Overture***, a sparkling, witty work drawn from the composer's student years that announces itself with all the comic swagger and melodic brilliance that would come to define Barber's voice. The program then turns to the world of new music with the Rhode Island Philharmonic Commission premiere of **Eric Nathan's Violin Concerto**, performed by the work's soloist Yevgeny Kutik. Kutik is a violinist of rare expressive depth; *The New York Times* has described him as having, "A dark-hued tone and razor-sharp technique." Nathan's concerto promises to be a landmark addition to the contemporary violin repertoire, shaped in close dialogue with Kutik's singular artistry. The evening concludes with **Beethoven's Symphony No. 6**, the beloved ***Pastoral***, a work in five movements that Beethoven himself described as "the expression of feeling rather than painting." *The New York Times* has called the *Pastoral* "a vision of nature that feels both utterly specific and timelessly universal, one of the few pieces in which joy feels entirely earned."

Brahms & Beethoven

Amica Rush Hour Series: October 16, 2026, at 6:30PM

TACO Classical Series: October 17, 2026, at 7:30PM

Ruth Reinhardt, conductor

Denis Kozhukhin, piano

PARRY: *Elegy for Brahms*

BRAHMS: Symphony No. 3

BEETHOVEN: Piano Concerto No. 5 (*Emperor*)



Ruth Reinhardt



Denis Kozhukhin

The season continues with **Brahms & Beethoven**, conducted by Music Director **Ruth Reinhardt** and featuring the remarkable Russian pianist, **Denis Kozhukhin**. A pianist of formidable technique and interpretive depth, Kozhukhin has been described by *The Concert Society* as "At the top of the world's pianists, with an exceptional brilliance in both technical and expressive aspects." The program opens with **Parry's *Elegy for Brahms***, a rarely heard and deeply moving tribute that speaks to the profound influence Brahms exerted across generations of composers. Parry channels grief and admiration into a work of austere, concentrated beauty that serves as a fitting threshold into the evening's larger Romantic landscape. The program then unfolds into **Brahms' Symphony No. 3**, a work of extraordinary emotional complexity that occupies a singular place in the symphonic canon. *The Guardian* has written that Brahms' Symphony No. 3 is "The most personal and the most puzzling of the four symphonies...its tenderness always shadowed by something unresolved." The evening then pivots to one of the grandest works in the entire piano repertoire: **Beethoven's Piano Concerto No. 5**, the *Emperor*. The *Emperor* Concerto lives up to its nickname in every sense: heroic, luminous, and inexhaustible in its invention.

Ride of the Valkyries!

Amica Rush Hour Series: November 20, 2026, 6:30PM

TACO Classical Series: November 21, 2026, 7:30PM

Christian Reif, conductor

Estefan Iatcekiw, piano

WAGNER: *Ride of the Valkyries* from *Die Walküre*

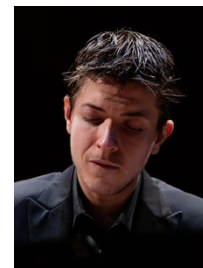
Clara SCHUMANN: Piano Concerto

DVOŘÁK: *The Wood Dove*

RAVEL: *La Valse*



Christian Reif



Estefan Iatcekiw

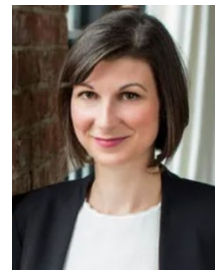
The Rhode Island Philharmonic Orchestra takes flight with **Ride of the Valkyries!**, conducted by **Christian Reif** and featuring the young, rising Brazilian pianist **Estefan Iatcekiw**, whose playing has drawn praise for its combination of technical command and interpretive sensitivity. The evening announces itself with all the force of myth: **Wagner's Ride of the Valkyries** from *Die Walküre*, perhaps the most viscerally thrilling few minutes in all of orchestral music, a thunderclap of brass and strings that has lost none of its primal power in the century and a half since it first shook an opera house. From that electric opening, the program turns to something rarer and more intimate: **Clara Schumann's Piano Concerto**, a work she began composing at just thirteen years old. Clara Schumann, long eclipsed by the twin shadows of her husband Robert and her devoted champion Johannes Brahms, has been steadily and rightfully reclaimed as a major compositional voice. The second half opens with **Dvořák's The Wood Dove**, a symphonic poem drawn from a darkly haunting Czech folk ballad in which a murderous widow is undone by the mournful cooing of a dove above her victim's grave, featuring Dvořák at his most atmospheric and narrative, conjuring dread and melancholy with the sureness of a master storyteller. The evening closes in a blaze of ballroom glamour and creeping dread with **Ravel's La Valse**, a work that begins in the glittering world of the nineteenth-century Viennese waltz and gradually unravels into something darker and more disquieting. *The New York Times* has described *La Valse* as "a work of terrifying beauty...the waltz as apocalypse."

Handel's Messiah

Sunday, December 13, 2026, 3PM

Christine Noel, conductor

Providence Singers, Christine Noel, Artistic Director



Christine Noel

The Rhode Island Philharmonic Orchestra's holiday tradition continues with **Handel's Messiah**. **Christine Noel** conducts and the **Providence Singers** (Christine Noel, Artistic Director) return for this paragon of music. Written in 1741, Handel's *Messiah* is in three parts. Part I describes the advent and birth of Christ, with the chorus "For unto us" demarcating the transition from one to the other. Part II details the life of Christ, his resurrection, his ascension to heaven, the preaching of the gospel by his apostles, and a vision of his ultimate victory. Part III celebrates the redemption of humankind – its eventual resurrection and receipt of eternal life – brought about by Christ's death. *The Providence Journal* said of the Providence Singers' *Messiah* performance in 2019: "A triumph...the Singers have never sounded better." Soloists include Lawrence Jones, tenor and David Soar, bass.

Romantic Chopin



Open Rehearsal: January 22, 2027, 5:30PM
TACO Classical Series: January 23, 2027, 7:30PM
Ruth Reinhardt, conductor
Alessio Bax, piano
R. STRAUSS: *Don Juan*
SHOSTAKOVICH: Symphony No. 1
CHOPIN: Piano Concerto No. 2
*Side by Side performance with students from the
RI Philharmonic Youth Orchestra*

Ruth Reinhardt

Alessio Bax

Ruth Reinhardt returns to the podium for **Romantic Chopin**, joined by the acclaimed Italian pianist **Alessio Bax** described by *Gramophone* as “among the most remarkable young pianists now before the public.” The program opens with **Richard Strauss's *Don Juan***, one of the most astonishing orchestral debuts in history, composed when Strauss was just twenty-four years old and already in full command of his extravagant gifts. Based on Nikolaus Lenau's version of the legendary seducer, *Don Juan* is a work of irresistible forward momentum and sumptuous orchestral color. The program then turns to **Shostakovich's Symphony No. 1**, composed as the composer's conservatory graduation piece when he was just nineteen, it is a symphony of wit, anxiety, and lurking darkness that already contains the essential Shostakovich in miniature. By turns sardonic and searingly emotional, the First Symphony announced the arrival of one of the twentieth century's most indispensable voices. The evening continues with **Chopin's Piano Concerto No. 2**, performed in a special side-by-side collaboration with students from the Rhode Island Philharmonic Youth Orchestra. Despite its numbering, the Second Concerto was the first that Chopin completed, and it bears all the hallmarks of a young composer utterly in love with the instrument and with the act of singing through it.

Tchaikovsky's Fifth

Amica Rush Hour Series: February 12, 2027, 6:30PM
TACO Classical Series: February 13, 2027, 7:30PM
Ruth Reinhardt, conductor
Vivi Vassileva, percussion
JOAN TOWER: *Fanfare for the Uncommon Woman*
JOHN CORIGLIANO: *Conjurer* (Percussion Concerto)
TCHAIKOVSKY: Symphony No. 5



Ruth Reinhardt



Vivi Vassileva

Ruth Reinhardt leads the Rhode Island Philharmonic in **Tchaikovsky's Fifth**, a program that moves from declaration to revelation, featuring the electrifying percussionist **Vivi Vassileva**, described as “an artist who thrills her audience, exploring and shifting the limits of the percussive world.” The evening opens with **Joan Tower's *Fanfare for the Uncommon Woman***, a work that does exactly what its title promises: a bold, brass-forward answer to Copland's famous *Fanfare for the Common Man* that announces itself as both homage and reclamation, a statement of arrival for women in the concert hall. Tower, one of America's most celebrated living composers, conceived the piece as a tribute to women who are “risk-takers and adventurers.” The program then turns to **John Corigliano's *Conjurer***, a percussion concerto of ferocious invention and theatrical imagination. Corigliano, Pulitzer Prize winner and one of classical

music's great dramatists, built *Conjurer* around three movements that each explore a different world of percussion: the pitched, the unpitched, and ultimately both together, summoning a range of color and drama that seems to conjure entire orchestras from a single soloist. The evening concludes with **Tchaikovsky's Symphony No. 5**, one of the most emotionally consuming works in the orchestral canon. Built around a recurring fate motif that transforms across its four movements from brooding inevitability into something approaching triumph, the Fifth is a symphony about the struggle to believe in fate, in redemption, in the possibility of joy. *The Guardian* has described it as "music of overwhelming emotional force...Tchaikovsky at his most nakedly human."

Northern Lights – Nielsen & Sibelius

Open Rehearsal: March 12, 2027, 5:30PM

TACO Classical Series: March 13, 2027, 7:30PM

Benjamin Manis, conductor

Brannon Cho, cello

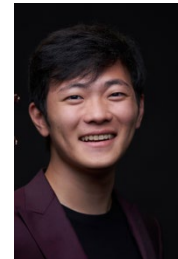
NIELSEN: *Helios*: Overture

TCHAIKOVSKY: *Variations on a Rococo Theme*

SIBELIUS: Symphony No. 5



Ben Manis



Brannon Cho

The Rhode Island Philharmonic journeys to the far north with **Northern Lights – Nielsen & Sibelius**, conducted by **Benjamin Manis** and featuring the brilliant young cellist **Brannon Cho**, praised for his “burnished tone, spellbinding technique, and probing musical mind.” The program opens with **Carl Nielsen's Helios Overture**, a work of quiet, radiant genius that traces the arc of the sun across a single day. Nielsen, Denmark's greatest composer and still too rarely heard on American concert stages, reveals in *Helios* a gift for landscape and light that rivals anything in the Scandinavian tradition. The program continues with **Tchaikovsky's Variations on a Rococo Theme**. Ostensibly a set of elegant, classically inflected variations on an original theme in the manner of Mozart, the work is in truth a vehicle of extraordinary emotional range that places enormous expressive demands on its soloist. The evening then arrives at its summit with **Sibelius's Symphony No. 5**, one of the towering achievements of twentieth-century orchestral music. Sibelius labored over the Fifth for nearly a decade, revising it three times before arriving at the version we know today: a work of vast, glacial architecture and sudden, startling lyricism, built toward one of the most arresting endings in all of symphonic music. *The New York Times* has described the Fifth as "music that seems to have been carved from the landscape itself...Sibelius at his most elemental and most profound."

Spano Conducts Puccini

Amica Rush Hour Series: April 9, 2027, 6:30PM

TACO Classical Series: April 10, 2027, 7:30PM

Robert Spano, conductor

Vocalists from Cafritz Young Artists of Washington
National Opera

PUCCINI: *Capriccio sinfonico*

PUCCINI: *La Bohème*, Act III

DELIBES: “Flower Duet” from *Lakmé*

BIZET: “Au fond du temple saint” from *The Pearl Fishers*



Robert Spano

RESPIGHI: *Pines of Rome*

The Rhode Island Philharmonic welcomes back Principal Guest Conductor **Robert Spano** for an evening of operatic splendor and orchestral grandeur with **Spano Conducts Puccini**, featuring an extraordinary roster of vocalists from the **Cafritz Young Artists of Washington National Opera**. The program opens with **Puccini's *Capriccio sinfonico***, a rarely heard early orchestral work that offers a fascinating glimpse into the composer before the operas made him immortal - already present in its pages are the sweeping melodic instincts and orchestral lushness that would come to define the Puccini sound, including a theme that would later resurface, transformed, in *La Bohème*. That early promise finds its fullest flowering in the evening's centerpiece: **Act III of *La Bohème***, Puccini at his most heartbreaking, performed with vocalists from the Cafritz Young Artists, Washington National Opera's celebrated program for emerging professional singers. The second half opens with two of opera's most beloved duets: **Delibes's "Flower Duet" from *Lakmé***, a melody so ravishingly beautiful it seems to exist outside of time, and **Bizet's "Au fond du temple saint" from *The Pearl Fishers***, a tenor-baritone duet of aching male friendship and shared longing that remains one of the most gorgeous things the nineteenth century produced. The evening then closes in spectacular fashion with **Respighi's *Pines of Rome***, a symphonic poem of cinematic scale and overwhelming orchestral force that conjures the eternal city across four iconic landscapes. *The Guardian* has described *Pines of Rome* as "one of the great orchestral showpieces...music of irresistible, unembarrassed magnificence."

Season Finale:

Ruth Conducts Beethoven's Missa Solemnis

Open Rehearsal: April 30, 2027, 5:30PM

TACO Classical Series: May 1, 2027, 7:30PM

Ruth Reinhardt, conductor

Providence Singers, Christine Noel, Artistic Director

BEETHOVEN: *Missa Solemnis*



Ruth Reinhardt

For the Season Finale, Ruth Reinhardt leads the Rhode Island Philharmonic in one of the most ambitious and profound undertakings in the orchestral canon: **Ruth Conducts Beethoven's Missa Solemnis**, performed in collaboration with the **Providence Singers** under the direction of Artistic Director **Christine Noel**. *Missa Solemnis* stands apart even within Beethoven's own towering output as a work he himself considered his greatest achievement, labored over for six years and completed in 1823, the same year as the Ninth Symphony, yet somehow even more vast and searching in its spiritual ambition. Beethoven inscribed the score with a dedication that has become one of music's most famous: "From the heart, may it return to the heart." The Providence Singers, one of Rhode Island's most accomplished choral ensembles, bring both technical excellence and deep musical commitment to this most demanding of choral works. *The New York Times* has called *Missa Solemnis*, "One of the greatest and most searching things the human spirit has ever produced in sound...Beethoven at the outermost edge of what music can say."

About Ruth Reinhardt, Music Director

German conductor Ruth Reinhardt is building a reputation for her keen musical intelligence, programmatic imagination, and elegant performances.

The 2025/26 season marks the beginning of Reinhardt's term as Music Director of the Rhode Island Philharmonic, leading seven programs across the season. In the summer of 2025, she debuted with the Seoul Philharmonic and the São Paulo State Symphony Orchestra. Other significant debuts in 25/26 include the Staatskapelle Dresden, Philharmonia Orchestra in London, Hong Kong Philharmonic, Bruckner Orchester Linz, SWR Symphonieorchester, the Folkwang Kammerorchester in Essen and the Sinfonieorchester St. Gallen in Switzerland. She also has return engagements with the Warsaw Philharmonic, New Jersey Symphony Orchestra, Naples Philharmonic (FL) and the Orlando Philharmonic.

Programmatically, Reinhardt's interests have led her toward contemporary repertoire, with significant emphasis on women composers of the late 20th and early 21st centuries. Her programs often introduce new names and fresh faces to many orchestras, including Grażyna Bacewicz, Kaija Saariaho, and Dai Fujikura, to name some of the more familiar ones, and pairs them with stylistically contrasting or complementary pieces, whether core masterworks by Brahms, Rachmaninoff, or Dvořák, or with "classic moderns" such as works by Bartók, Stravinsky, Lutoslawski, Martinů, and Hindemith. Ruth is a frequent collaborator of many of today's foremost instrumentalists spanning several generations. Among them are pianists Emanuel Ax, Daniil Trifonov, and Eva Gevorgyan, violinists Augustin Hadelich and Vadim Gluzman, cellists Andrei Ioniță and Jean-Guihen Queyras, horn player Stefan Dohr, and saxophonist Steven Banks.

In past seasons, Reinhardt has appeared with many of the major North American Orchestras and as recently as last season has made debuts with the St. Louis and Charlotte Symphony Orchestras. Previously, she has appeared with the New York Philharmonic, Cleveland Orchestra (on four occasions), National Symphony Orchestra, and the symphony orchestras of San Francisco, Detroit, Houston, Seattle, and Baltimore. In Europe, she has appeared with Hague Residentie Orkestra, Netherlands Radio Philharmonic in Amsterdam, Orchestre National de France, Frankfurt Radio Symphony, RSO Berlin, Stockholm Philharmonic, and Tonkünstler Orchestra Wien, among many others.

Ruth Reinhardt served as Assistant Conductor of the Dallas Symphony for the final two seasons of Jaap Van Zweden's tenure as Music Director (2018-2020). She received her master's degree in conducting from the Juilliard School of Music in New York in 2017. She was a Dudamel Fellow of the Los Angeles Philharmonic (2017-2018), conducting fellow at both the Seattle Symphony (2015-2016) and Tanglewood Music Center (2015), and Taki Concordia associate conducting fellow (2015-2017). She currently makes her home in Switzerland.

About the Rhode Island Philharmonic Orchestra & Music School

The Rhode Island Philharmonic Orchestra & Music School is committed to engaging people of Southern New England as lifelong music listeners, teachers, learners, creators and performers. It is the only professional orchestra in the country to officially designate music education and performance as equal priorities. In addition to the Philharmonic Orchestra's Classical, Pops, Education concerts and in-school performances, the RI Philharmonic Music School offers music education programs and performance opportunities to people of all ages, incomes and ability levels. Currently the largest comprehensive, non-profit community music school in Rhode Island, the Philharmonic Music School engages approximately 1,100 students statewide on a weekly basis at its music school in East Providence, with an additional 13,000 students through partnerships, residencies, music literacy programs and education concerts.

In December 2006, the RI Philharmonic moved its administrative offices to East Providence and in fall 2008 opened the Carter Center for Music Education & Performance, the first facility of its kind in Rhode Island. The Carter Center has dramatically increased the RI Philharmonic's ability to provide high quality, comprehensive and accessible music education through its Music School to thousands of students through scholarships and community partnerships. Students come to visit the Carter Center from virtually every community in the state, as well as nearby Massachusetts and Connecticut.