



**DISADVANTAGED BUSINESS ENTERPRISES (DBE) PROGRAM  
FOR THE FEDERAL TRANSIT ADMINISTRATION  
AND WASHINGTON STATE DEPARTMENT OF TRANSPORTATION**

**JULY 1, 2019 TO JUNE 30, 2022**

*Island Transit serves Whidbey and Camano Islands in Island County. The mission of Island Transit is to provide safe, accessible, convenient, and friendly public transportation services which enhance our Island quality of life.*

## **2019 ISLAND TRANSIT BOARD OF DIRECTORS**

Jackie Henderson, Chair, Town of Coupeville Councilwoman  
Helen Price Johnson, Vice Chair, Island County Commissioner, District 1  
Bruce Allen, Secretary, City of Langley Councilman  
Beth Munns, City of Oak Harbor Councilwoman  
Lance Norton, Amalgamated Transit Union, Local 1576  
Janet St. Clair, Island County Commissioner, District 3

## **ISLAND TRANSIT STAFF**

Todd E. Morrow, Executive Director  
Robyn Goldring, Administrative & Human Resources Manager  
Paul Arand, Finance Manager  
Ken Riley, Maintenance Manager  
Shawn Harris, Operations Manager  
Meghan Heppner, Assistant to the Executive Director

**Island Transit complies with all federal requirements under Title VI, which prohibits discrimination on the basis of race, color or national origin.**

If you have questions concerning this policy or practice, please contact Island Transit, 19758 SR 20, Coupeville, WA 98239, or contact the agency's Title VI Coordinator at (360) 678-7771 or [info@islandtransit.org](mailto:info@islandtransit.org).

This document can be made available in other accessible formats. Please contact Island Transit at (360) 678-7771 or email [info@islandtransit.org](mailto:info@islandtransit.org).

## TABLE OF CONTENTS

	PAGE
Board Resolution No. 15-19, Adopting the 2019-2022 Disadvantaged Business Enterprise Program	5
Objectives & Policy Statement	8
Subpart A – General Requirements	9
Section 26.1 - Objectives	9
Section 26.3 - Applicability	9
Section 26.5 - Definitions	9
Section 26.7 - Non-discrimination Requirements	9
Section 26.11 - Record Keeping Requirements	10
Section 26.13 - Federal Financial Assistance Agreement	10
Subpart B – Administrative Requirements	12
Section 26.21 - DBE Program Updates	12
Section 26.23 - Policy Statement	12
Section 26.25 - DBE Liaison Officer (DBELO)	12
Section 26.27 - DBE Financial Institutions	12
Section 26.29 - Prompt Payment Mechanisms	13
Section 26.31 - Directory	14
Section 26.33 - Overconcentration	14
Section 26.35 - Business Development Programs	14
Section 26.37 - Monitoring and Enforcement Mechanisms	14
Section 26.39 - Small Business Participation	15
Subpart C – Goals, Good Faith Efforts, and Counting	16
Section 26.43 – Set-asides or Quotas	16
Section 26.45 – Overall Goals	16
Section 26.49 – Transit Vehicle Manufacturers Goals	17
Section 26.51 – Meeting Overall Goals	17
Section 26.55 – Counting DBE Participation	18
Subpart D and E – Certification	19
Section 26.81 – Unified Certification Programs	19
Section 26.83 – 26.91 – Procedures for Certification Decisions	19

	<b>PAGE</b>
Subpart F – Compliance and Enforcement	20
Section 26.109 – Information, Confidentiality, Cooperation	20
Attachments	
Attachment A – Participation and Good Faith Effort Report (sample)	21
Attachment B – Organization Chart	22
Attachment C – Monitoring and Enforcement Mechanisms	23
Attachment D – OMWBE Directory – Island, Skagit, Whatcom, & Snohomish counties	24



## RESOLUTION NO. 15-19

**A RESOLUTION of the Board of Directors of the Island County Public Transportation Benefit Area Corporation (Island Transit) adopting the Island Transit Disadvantaged Business Enterprises (DBE) Program, effective July 1, 2019 – June 30, 2022, which is attached as Exhibit A and incorporated into this Resolution by this reference, superseding Resolution No. 10-16, and authorizing future regulatory and administrative changes.**

WHEREAS, Island Transit had established a Disadvantaged Business Enterprise (DBE) program to comply with regulations of the U.S. Department of Transportation (DOT), 49 CFR Part 26, as a condition of receiving Federal financial assistance from the DOT; and

WHEREAS, Island Transit's objective is to promote the use of all types of DBEs, as defined in 49 CFR Part 26, and ensure they have an equal opportunity to receive and participate in DOT-assisted contracts; and

WHEREAS, Island Transit hereby commits to the following and promotion of its DBE program and its policies which include:

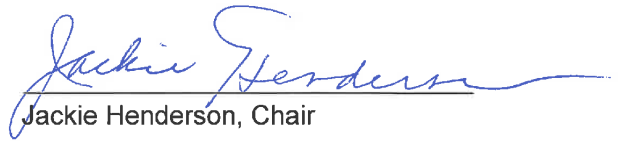
- Ensure nondiscrimination in the award and administration of DOT-assisted contracts.
- Create a level playing field and remove barriers so DBEs can compete fairly for and participate in DOT-assisted contracts.
- Ensure that the DBE Program is narrowly tailored in accordance with applicable law.
- Ensure that only firms that fully meet 49 CFR Part 26 eligibility standards are permitted to participate as DBEs.
- Assist the development of firms that can compete successfully in the marketplace outside the DBE Program.
- Structure procurement and contracting opportunities in ways that foster competition among Small Business Enterprises and DBE's.
- Monitor DBE performance and certifications during the term of all DOT-assisted contracts.

NOW, THEREFORE BE IT RESOLVED by the Board of Directors of the Island County Public Transportation Benefit Area Corporation (Island Transit) that they hereby

adopting the Island Transit Disadvantaged Business Enterprises (DBE) Program, effective July 1, 2019 – June 30, 2022, which is attached as Exhibit A and incorporated into this Resolution by this reference, superseding Resolution No. 10-16, and authorizing future regulatory and administrative changes.

APPROVED AS TO FORM:

  
Matthew R. Hendricks, Attorney

  
Jackie Henderson, Chair

  
Bruce Allen, Secretary

*Adopted at an open public meeting of the  
Board of Directors of Island Transit on  
December 6, 2019.*

[INTENTIONALLY LEFT BLANK]

## OBJECTIVES AND POLICY STATEMENT

Island Transit has established a Disadvantaged Business Enterprise (DBE) program to comply with regulations of the U.S. Department of Transportation (DOT), 49 CFR Part 26. As a condition of receiving Federal financial assistance from the DOT, Island Transit assures compliance with 49 CFR Part 26.

Island Transit's objective is to promote the use of all types of DBEs, as defined in 49 CFR Part 26, and ensure they have an equal opportunity to receive and participate in DOT-assisted contracts and subcontracts. Island Transit hereby commits to the following and promotion of its DBE program and its policies, which include:

1. Ensure nondiscrimination based on race, color, national origin, or sex in the award and administration of DOT-assisted contracts and subcontracts.
2. Create a level playing field and remove barriers so DBEs can compete fairly for and participate in DOT-assisted contracts and subcontracts.
3. Ensure that the DBE Program is narrowly tailored in accordance with applicable law.
4. Ensure that only firms that fully meet 49 CFR Part 26 eligibility standards are permitted to participate as DBEs.
5. Assist in the development of firms that can compete successfully in the marketplace outside the DBE Program.
6. Structure procurement and contracting opportunities in ways that foster competition among Small Business Enterprises and DBE's.
7. Monitor DBE performance and certifications during the term of all DOT-assisted contracts and subcontracts.

The Finance Manager is the DBE Liaison Officer (DBELO). In that capacity, the Finance Manager is responsible for implementing all aspects of the DBE program Compliance with the DBE program so that it is given the same priority as all other legal obligations required of Island Transit in its financial assistance agreements with the DOT.

This program has been discussed and approved by the Island Transit Board of Directors. It has been distributed throughout our organization and posted on Island Transit's website. It will be distributed to both DBE and non-DBE businesses through outreach forums. Island Transit will incorporate DBE program language into our procurement processes.



Todd E. Morrow, Executive Director



Date

## **SUBPART A – GENERAL REQUIREMENTS**

### **Section 26.1 Objectives**

Island Transit's objective is to promote the use of all types of DBEs, as defined in 49 CFR Part 26, and ensure they have an equal opportunity to receive and participate in DOT-assisted contracts.

### **Section 26.3 Applicability**

Federal transit funds authorized by Titles I, III, V and VI of ISTEA, Pub. L. 102-240 or by Federal transit laws in Title 49, U.S. Code, or Titles I, III, and V of the TEA-21, Pub. L. 105-178. Titles I, III, and V of the Safe, Accountable, Flexible, Efficient Transportation Equity Act: A Legacy for Users (SAFETEA-LU), Pub. L. 109-59, 119 Stat. 1144; and Divisions A and B of the Moving Ahead for Progress in the 21st Century Act (MAP-21), Pub. L. 112-141, 126 Stat. 405 or any other applicable source requiring a DBE program.

Island Transit does not submit a DBE Program to the Federal Transit Administration (FTA) for years without applicable federally funded programs, so long as all funds from any DOT financial assistance have been expended. For example, in years when the only federally funded programs are for rolling stock purchases, a DBE plan is not required. Years with federally funded construction projects will require a DBE plan, until such time as all funds from DOT financial assistance have been expended. (CFR 49 part 26.21)

### **Section 26.5 Definitions**

Island Transit adopts and incorporates by reference, the definitions contained in 49 C.F.R. Section 26.5 for this program.

### **Section 26.7 Non-discrimination Requirements**

Island Transit will not exclude any person from participation in, deny any person the benefits of, or otherwise discriminate against anyone in connection with the award and performance of any contract covered by 49 CFR part 26 on the basis of race, color, sex, or national origin.

In administering its DBE program, Island Transit will not, directly or indirectly, use criteria or administration methods that defeat or substantially impair accomplishment of the objectives of this program with respect to individuals of a particular race, color, sex, or national origin.

## **Section 26.11 Record Keeping Requirements**

### Reporting to DOT: 26.11 (a) and (b)

Island Transit will report DBE participation on a semi-annual basis using the Uniform Report of DBE Awards or Commitments and Payments. The agency will report to WSDOT quarterly using the Participation and Good Faith Effort Report (Attachment A). Additional information on Island Transit's DBE program will be made available upon request by DOT.

### Bidders List: 26.11 (c)

Island Transit will create a bidders list, consisting of information about all DBE and non-DBE firms that may bid or quote on DOT-assisted contracts. The bidders list will include the firm name, address, DBE/non-DBE status, age of the firm, NAICS codes relating to the work the firm is certified to perform, and annual gross receipts of the DBE. Island Transit will maintain records documenting prime and sub-contractor compliance. All records will be retained according to Island Transit's financial assistance agreement or a minimum of three (3) years, whichever is longer. Information will be collected in the following ways:

- A contract clause requiring prime bidders to report the names/addresses, and other information of all firms who quote to them on subcontracts;
- A notice in all solicitations, and otherwise widely disseminated;
- Require firms interested in doing business either directly or indirectly through subcontracts to report information directly to Island Transit.

## **Section 26.13 Federal Financial Assistance Agreement**

Island Transit has signed the following assurances, applicable to all DOT-assisted contracts and their administration:

Assurance: 26.13 (a)

Island Transit will ensure that the following clause is placed verbatim in every contract and sub-contract that is funded in whole or in part by DOT:

*Island Transit agrees that it shall not discriminate on the basis of race, color, national origin, or sex in the award and performance of any third-party contract, or sub-agreement supported with federal assistance derived from the USDOT or in the administration of its DBE program or the requirements of 49 CFR Part 26. Island Transit agrees to take all necessary and reasonable steps under 49 CFR Part 26 to ensure nondiscrimination in the award and administration of all third-party contracts and sub-agreements supported with federal assistance derived from the USDOT. (Island Transit will also follow all requirements specified in the WSDOT Consolidated Grants Program Guidebook, most current version, and any amendments thereto referencing DBE standards.)*

*Island Transit's DBE program, as required by 49 CFR Part 26 and approved by the USDOT, is incorporated by reference and made part of this AGREEMENT. Implementation of the DBE program is a legal obligation, and failure to carry out its terms shall be treated as violation of this AGREEMENT. Upon notification to Island Transit of its failure to implement its approved DBE program, the USDOT may impose sanctions as provided for under 49 CFR Part 26 and may, in appropriate cases, refer the matter for enforcement under 18 USC § 1001, and/or the Program Fraud Civil Remedies Act, 31 USC §§ 3801 et seq.*

Contract Assurance: 26.13 (b)

Island Transit will ensure that the following clause is placed verbatim in every contract and sub-contract that is funded in whole or in part by DOT:

The contractor, sub-recipient, or subcontractor shall not discriminate on the basis of race, color, national origin, or sex in the performance of this contract. The contractor shall carry out applicable requirements of 49 CFR Part 26 in the award and administration of DOT-assisted contracts. Failure by the contractor to carry out these requirements is a material breach of this contract, which may result in the termination of this contract or such other remedy as the recipient deems appropriate. This may include, but is not limited to:

- Withholding monthly progress payments

- Assessing financial sanctions
- Invoking liquidated damages
- Disqualifying/Debarring the contractor or sub-contractor from future bidding on DOT-assisted contracts

## **SUBPART B – ADMINISTRATIVE REQUIREMENTS**

### **Section 26.21 DBE Program Updates**

Island Transit will provide the FTA with updates representing significant changes in the program. Island Transit agrees to carry out the DBE program until all DOT funds are expended.

### **Section 26.23 Policy Statement**

The Policy Statement is elaborated on the first page of this program.

### **Section 26.25 DBE Liaison Officer (DBELO)**

Island Transit designated the following individual as the DBE Liaison Officer:

Paul Arand, Finance Manager  
19758 State Route 20  
Coupeville, Washington 98239  
(360) 678-7771  
arand@islandtransit.org

The DBELO is responsible for implementing all aspects of the DBE program and ensuring that Island Transit complies with all provision of 49 CFR Part 26. An organization chart is included as Attachment B. The DBELO is responsible for developing, implementing and monitoring the DBE program, in coordination with other appropriate officials.

### **Section 26.27 DBE Financial Institutions**

It is the policy of Island Transit to investigate the full extent of services offered by financial institutions owned and controlled by socially and economically disadvantaged individuals in the



community, to make reasonable efforts to use these institutions, and to encourage prime contractors on DOT-assisted contracts to make use of these institutions.

Island Transit searched the Washington State Office of Minority & Women's Business Enterprises (OMWBE) directory to identify such institutions and will re-evaluate the availability of DBE financial institutions during its triennial goal setting. To date Island Transit has not identified any DBE financial institutions in Island County or the State of Washington. Information on the availability of such institutions can be obtained from the DBE Liaison Officer.

### **Section 26.29 Prompt Payment Mechanisms**

Island Transit will include the following clause in each prime contract for work that is fully or partially funded by DOT:

*The prime contractor agrees to pay each subcontractor under this prime contract for satisfactory performance of its contract no later than thirty (30) days from the receipt of each payment the prime contract receives from Island Transit. The prime contractor agrees further to return retainage payments to each subcontractor within thirty (30) days after the subcontractor's work is satisfactorily completed. Any delay or postponement of payment from the above referenced timeframe may occur only for good cause following written approval of Island Transit. This clause applies to both DBE and non-DBE subcontracts. Island Transit will not reimburse the prime contractor and may impose other appropriate penalties for work performed by subcontractors unless and until the prime has ensured that the subcontractors are promptly paid for the work they have performed.*

Island Transit and the contractor will agree to hold retainage from prime contractors and provide milestone payments on portions of completed prime contract. Island Transit would pay retainage to the prime contractor based on acceptance of these milestones and require a contract clause obligating the prime to pay all subcontract retainage within thirty (30) days of receipt of payment.

The following contract clause will be included in all prime and subcontracts for work fully or partially funded by DOT:

*If the parties do not resolve a dispute through initial negotiations, then the matter should be resolved by a mutually agreed-to alternative dispute resolution process. This can include structured negotiations, mediation, or arbitration.*

### Monitoring Payments to DBEs

Island Transit will require prime contractors to maintain records and documents of payments to DBEs for three (3) years following the performance of the contract. These records will be made available for inspection upon request by any authorized representative of Island Transit or DOT. This reporting requirement also extends to any certified DBE subcontractor.

Island Transit will perform interim audits of contract payments to DBEs. The audit will review payments to DBE subcontractors to ensure that the actual amount paid to DBE subcontractors equals or exceeds the dollar amounts states in the schedule of DBE participation.

### **Section 26.31 Directory**

Island Transit utilizes the Washington State Office of Minority and Women's Business Enterprises (OMWBE) directory that identifies all firms eligible to participate as DBEs. This directory satisfies all requirements of this section within 49 CFR. Washington State OMWBE is the approved Unified Certification Program for DBE Certification under 49 CFR Part 26.81(g).

Parties interested in becoming certified under the WA OMWBE program can contact the agency at <http://omwbe.wa.gov> or call toll free (866) 208-1064. Island Transit also maintains a list of vendors, including DBEs specifically interested in Island Transit opportunities. Parties interested in the Island Transit list may contact the DBELO.

### **Section 26.33 Overconcentration**

Island Transit has not identified that overconcentration exists in the types of work that DBEs perform.

### **Section 26.35 Business Development Programs**

Island Transit has elected not to establish a business development program.

### **Section 26.37 Monitoring and Enforcement Mechanisms**

Island Transit will take the following monitoring and enforcement mechanisms:

1. Bring to the attention of the Department of Transportation (DOT) any false, fraudulent, or dishonest conduct in connection with the program, so that DOT can take the steps (e.g., referral to the Department of Justice for criminal prosecution, referral to the DOT Inspector General, action under suspension and debarment or Program Fraud and Civil Penalties rules) provided in 26.109.
2. Consider similar action under its own legal authorities available under State, local and Federal law, if any, including responsibility determinations in future contracts. Attachment C lists the regulation, provisions, and contract remedies available to Island Transit in the events of non-compliance with the DBE regulation by a participant in Island Transit's procurement activities.
3. Provide monitoring and enforcement to verify that work committed to DBEs at contract award is actually performed by the DBEs. This will be accomplished as described in the applicable contract.
4. Keep a running tally of actual payments to DBE firms for work committed to them at the time of contract award.

### **Section 26.39 Small Business Participation**

Island Transit incorporates the following non-discriminatory element to its DBE program, in order to facilitate competition on DOT-assisted public works projects by DBE and non-DBE small business concerns:

- Structure contracting requirement to facilitate and encourage competition and participation between small business and DBE's.
- Removal of unnecessary and unjustified bundling of contract requirements.
- Require prime contractors to provide subcontracting opportunities of the type and size that small businesses, including DBEs, can reasonably compete for and perform where possible.
- Identify alternative strategies and structuring procurements to allow consortia or joint ventures to compete for and perform prime contracts.
- Review available DBEs, per OMWBE, in Island Transit's market area for DOT-funded projects and procurements.

## SUBPART C – GOALS, GOOD FAITH EFFORTS, AND COUNTING

### Section 26.43 Set-asides or Quotas

Island Transit does not use quotas or set-asides in the administration of this DBE program.

### Section 26.45 Overall Goals:

Island Transit has adopted Washington State Department of Transportation's (WSDOT) 2014-2016 DBE goal setting methodology. Therefore, the proposed overall Island Transit DBE goal for FY 2019-2022 is 5.58%. This section of the program will be updated at least triennially. The overall goal will be based on the availability of ready, willing, and able DBE's that can participate in Island Transit's DOT-assisted contracts. However, Island Transit's market area includes Island, Skagit, Whatcom, and Snohomish Counties. In evaluating the majority of Island Transit's past projects utilizing Federal funds, the agency recognizes that there is not a significant pool of certified DBEs, making it difficult to make race conscious/contracting goals feasible for the agency.

In accordance with 49 C.F.R. Section 26.45(f) Island Transit will submit its overall goal to DOT by August 1 of the year required. Before establishing the overall goal each year, Island Transit will consult with DBE contractor associations, technical assistance agencies, community organizations, and other officials or organizations in the service area to obtain information concerning the availability of DBE and Small Businesses ready, willing, and able to participate in DOT-assisted projects. Island Transit will also examine the effects of discrimination on opportunities for DBEs, and Island Transit's efforts to establish a level playing field for the participation of DBEs. Island Transit will document any outreach efforts.

Following this consultation, Island Transit will publish a notice on its website [www.islandtransit.org](http://www.islandtransit.org) of the proposed overall goals, informing the public that the proposed goal and its rationale are available online for review and comment thirty (30) days following the date of the notice. Island Transit will publish its proposed goal no later than July 1. The notice will include contact information to which comments may be sent.

Island Transit's overall goal submission to DOT will include a summary of information, any comments received during this public participation process, and Island Transit's responses.

Island Transit will begin using the overall goal once approved by DOT, unless given other instructions from DOT. If a project goal is established for a DOT-assisted project, the goal will be in use by the time of the project solicitation.

#### **Section 26.49 Transit Vehicle Manufacturers Goals**

Island Transit will require each Transit Vehicle Manufacturer (TVM), as a condition of being authorized to bid or propose on FTA-assisted transit vehicle procurements, to certify that it has complied with the requirements of 49 C.F.R. Section 26.49, and will include such an obligation in any contract.

Only TVM 's listed on FTA's certified list of Transit Vehicle Manufacturers or who have submitted a goal methodology that has been approved or not disapproved at the time of solicitation will be eligible to bid.

#### **Section 26.51 Meeting Overall Goals**

Island Transit will meet the maximum feasible portion of its overall goal using race-neutral means of facilitating DBE participation. To develop DBE participation, Island Transit will:

1. Arrange solicitations, times for the presentation of bids, quantities, specifications and delivery schedules in ways that facilitate participation by DBEs and other small businesses and by making contracts more accessible to small businesses. This could include unbundling large contracts to make them more accessible to small businesses; requiring or encouraging prime contractors to subcontract portions of work that they might otherwise perform on their own; reducing bonding requirements and simplifying the bond process, or providing services to assist DBE's and other small businesses in gaining financing and bonding.
2. Carry out information and communications programs on contracting procedures and specific contract opportunities. This could include ensuring the inclusion of DBEs and other small businesses on recipient mailing lists for bidders, ensuring the dissemination to bidders on prime contracts of lists of potential subcontractors, and providing information in formats other than English, where appropriate.
3. Providing access to services to help DBEs and other small businesses to develop and improve long-term business management, record keeping, and financial and accounting capability.

4. Increase opportunities to participate in a variety of kinds of work, handle increasingly significant projects and achieve eventual self-sufficiency.
5. Encouraging use of the online OMWBE directory.
6. Referring DBEs and other small businesses to programs that can assist them to develop their capacity to utilize emerging technology and conduct business through electronic media.

For reporting purposes, race-neutral DBE participation includes, but is not necessarily limited to, the following:

- DBE participation through a prime contract a DBE obtains through customary competitive procurement procedures.
- DBE participation through a subcontract on a prime contract.
- DBE participation through a subcontract from a prime contractor that did not consider a firm's DBE status in making the award.

### **Section 26.55 Counting DBE Participation**

Island Transit will count DBE participation as follows. Participation will not be counted until the amount being counted has been paid to the DBE:

- Actual work performed by a DBE's own forces when participating in a contract. This will include the cost of supplies, material, purchased and/or leased equipment obtained by the DBE, fees, commissions charged by the DBE.
- DBE Subcontracted work performed by another DBE.
- When participating in a joint venture, the DBE's portion of the total dollar value of the contract equal to the defined portion of the work they are performing with their own forces.
- Expenditures to a DBE contractor when they perform a commercially useful function (§26.55 (c)) on the contract.
- Purchases for supplies, materials or equipment that are obtained from a DBE manufacturer or a regular dealer or transaction expeditor. This will include any assistance provided in the procurement, fees or transportation charges provided Island Transit determines these fees are reasonable and not excessive.

Firms not certified as a DBE at the time of contract execution will not be counted towards participation. Firms that lose their DBE certification will not be counted either.

## **SUBPARTS D AND E – CERTIFICATION**

### **Section 26.81 Unified Certification Programs**

Island Transit participates in the Unified Certification Program (UCP) through the Washington State Office of Minority and Women's Business Enterprises (OMWBE). The Washington State Department of Transportation (WSDOT) and OMWBE represent that WSDOT is ultimately accountable and responsible to USDOT for Disadvantaged Business Enterprise (DBE) Certification in the state of Washington. OMWBE is the sole and exclusive certification authority for USDOT DBE participation. Final certification determinations made by OMWBE are binding and have the full force and effect of law as provided by this part.

OMWBE maintains the DBE directory at <http://omwbe.wa.gov/directory-of-certified-firms/>. Attachment D contains listings for Island Skagit, Whatcom, and Snohomish Counties, which represent regional areas of interest for Island Transit.

### **Section 26.83-26.91 Procedures for Certification Decisions**

Firms will be directed to contact the Washington State Office of Minority and Women's Business Enterprises at <http://www.omwbe.wa.gov> for information or questions about the DBE certification process. Island Transit does not certify DBE's. Island Transit will rely upon the directory from the Washington State Office of Minority and Women's Business Enterprises to ensure that only firms certified as eligible DBE's will participate as a DBE.

Any firm or complainant may appeal OMWBE's decision in a certification matter to DOT. Such appeals may be sent to:

U.S. Department of Transportation  
Office of Civil Rights Certification Appeals Branch  
1200 New Jersey Ave. SE  
West Building, 7th Floor  
Washington, D.C. 20590

Island Transit will promptly implement any DOT certification appeal decisions affecting the eligibility of DBEs for DOT-assisted contracting (e.g., certify a firm if DOT has determined that Island Transit's denial of its application was erroneous).

## **SUBPART F – COMPLIANCE AND ENFORCEMENT**

### **Section 26.109      Information, Confidentiality, Cooperation**

Island Transit will safeguard from disclosure to third parties' information that may reasonably be regarded as confidential business information, consistent with Federal Freedom of Information and Privacy Acts and Washington State Public Disclosure law. See RCW Chapter 42.56 "Public Records Act" for Washington requirements. Such protection may be in the form of providing an opportunity for the party claiming to have confidential business information an opportunity to obtain an injunction from a court under RCW 42.56.540.

To the extent not contrary to provisions of state or local law, Island Transit will not release personal financial information submitted in response to the personal net worth requirement to a third party (other than DOT) without the written consent of the submitter.

Island Transit will cooperate and promptly provide information as required for compliance reviews, investigations, and other requests for information from DOT.

Island Transit employees, agents, or contractors will not intimidate, threaten, coerce, or discriminate against any individual or firm who has made a complaint, testified, assisted or participated in any manner in an investigation, proceeding, or hearing.



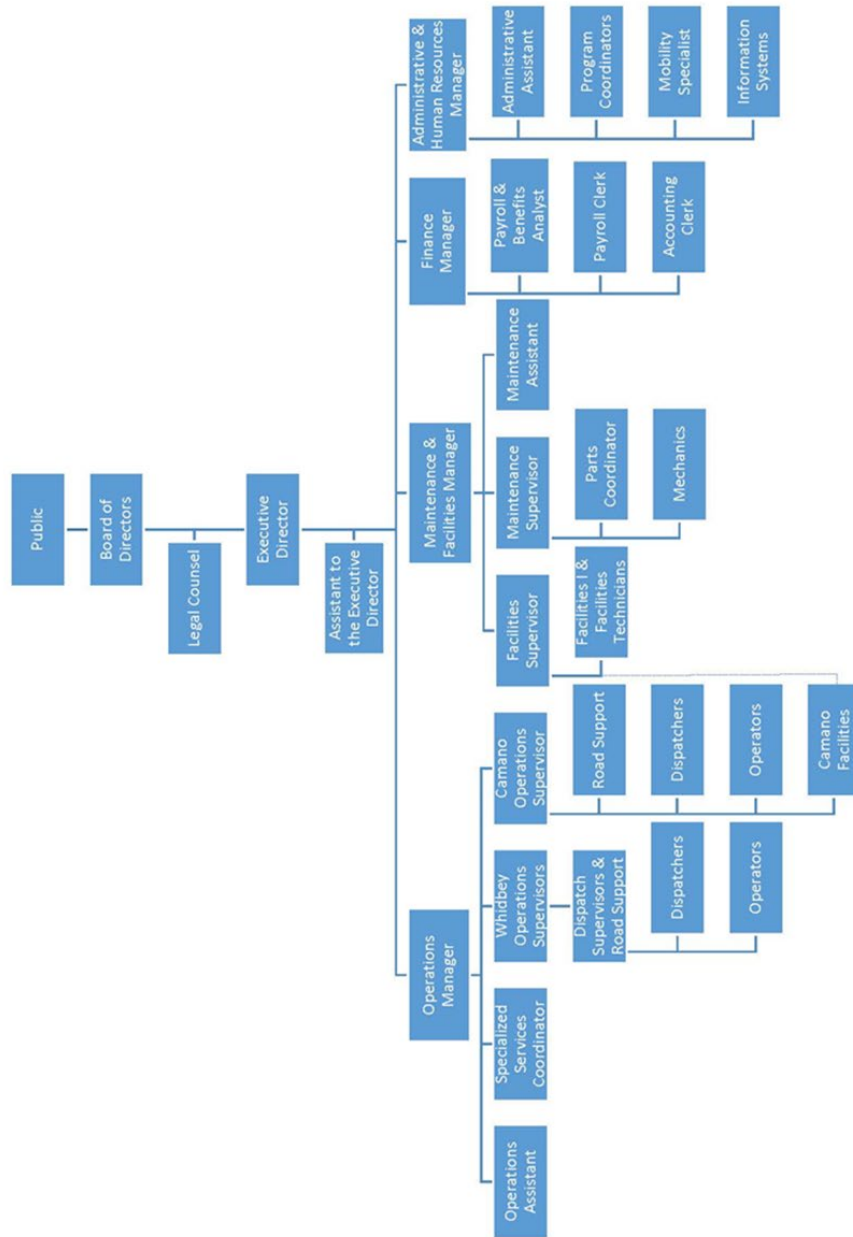
## ATTACHMENT A

## PARTICIPATION AND GOOD FAITH EFFORT REPORT

Washington State Department of Transportation, Public Transportation Division			
Disadvantaged Business Enterprise – Participation and Good Faith Effort Report			
Grantee Name	Island County Public Transportation Benefit Area D/b/a Island Transit		
WSDOT Contract #			
Reporting quarter			
Third Party Contract Information			
Prime Contractor:			
Type of Contract *1		Contract Goal	
DBE Subcontractors or vendors (If no subcontractors, use prime contractor data)			
Name	Contract Value	Amount Paid this period	Type of work performed by DBE prime contractor, subcontractor, or vendor
		\$ -	
Good Faith Efforts Narrative			
1. Describe your overall plan or approach to meeting the DBE requirement. If the contract has a DBE goal identified, describe your effort to meet this goal, if no DBE opportunity is available, provide explanation for why.			
2. Describe your efforts and/or those of the prime contractor to solicit participation from DBEs. Include:			
<ul style="list-style-type: none"> <li>• Direct outreach <ul style="list-style-type: none"> <li>○ How did you identify whether or not there were any DBEs available to provide the goods and/or services</li> <li>○ How the DBEs were contacted</li> <li>○ Date(s) and method of outreach, i.e. phone, email or fax);</li> </ul> </li> <li>• Indirect outreach such as: <ul style="list-style-type: none"> <li>○ Outreach events</li> <li>○ Publications, and/or</li> <li>○ Communication with minority and other organizations - state date(s), location and audience);</li> </ul> </li> </ul>			

## ATTACHMENT B

### Island Transit Organization Chart



1.1.19

## ATTACHMENT C

### MONITORING AND ENFORCEMENT MECHANISMS

Island Transit has available several remedies to enforce the DBE requirements contained in its contracts, including, but not limited to, the following:

- Breach of contract action, pursuant to the terms of the contract;
- Statutory penalties under RCW 39.19.080 and 39.19.090 for noncompliance;
- Other applicable laws, statutes, and regulations.

In addition, the federal government has available several enforcement mechanisms that it may apply to firms participating in the DBE problem, including, but not limited to, the following:

- Suspension or debarment proceedings pursuant to 49 CFR part 26.
- Enforcement action pursuant to 49 CFR part 31.
- Prosecution pursuant to 18 USC 1001.

**ATTACHMENT D**

**OMWBE DIRECTORY  
ISLAND, SKAGIT, WHATCOM, AND SNOHOMISH COUNTIES  
STATE OF WASHINGTON**

## OMWBE DIRECTORY FOR ISLAND, SKAGIT, WHATCOM AND SNOHOMISH COUNTIES

Company Name	DBA Name	City	Certification Type	Capability	Commodity Codes
Any Thompson DDS PLLC	New Life Dental Arts	Lake Stevens	WBE	Family dental practice that focuses on customer service and patient satisfaction. See patients of all ages, including children. Services include restorative dental care (composite fillings, crowns), implants, bridges, cosmetic dental care (veneers, smile reconstruction), invisalign, and preventative care and oral appliance therapy for sleep apnea	621110 - Family dentists' offices (e.g., centers, clinics); 621499 - Sleep disorder centers and clinics, outpatient
Andrea Gabriel Fine Art & Illustration	Creekside Collaborative	Bellingham	WBE	Website design services including writing and editing of content and logo design. Wordpress installation, website maintenance, and Wordpress user training.	541430 - Graphic design services; 541511 - WEB (e.g., internet) page design services, custom; 711510 - Writers, independent (freelance)
APPLE PEDIATRIC DENTISTRY LLC	APPLE PEDIATRIC DENTISTRY LLC	Fernside	MBE	DENTAL CARE	621210 - Dentists' offices (e.g., centers, clinics)
ARCook Consulting, LLC		Multiteo	DBE	Project Management and Administrative Management Services, specializing in light of way, Real Estate Support Services.	531390 - Real estate consultants' (except agents, appraisers) offices; 541611 - Administrative management consulting services
ARCook Consulting, LLC		Multiteo	WBE	Project Management and Administrative Management Services, specializing in light of way, Real Estate Support Services.	531390 - Real estate consultants' (except agents, appraisers) offices; 541611 - Administrative management consulting services
Artemis Connection Inc	Artemis Connection Inc	Multiteo	WBE	Provides business consulting that is tailored to the firm's culture and systems by using hard data, academic research, and business experience.	541611 - Business management consulting services
Arthur Jackson CTC Inc.	Arthur Jackson CTC Inc.	Multiteo	MBE	First aid instruction, including CPR and AED training.	811999 - First aid instruction
Audit & Adjustment Company, Inc.	Audit & Adjustment Company, Inc.	Lynnwood	WBE	A collection agency, specializing in collection of past due accounts and bad debts. Working with businesses in numerous industries including healthcare organizations, municipalities, financial institutions, public and private utilities, and businesses.	561400 - Collection agencies
Austin Specialties, Inc.	Austin Fire & Safety	STANWOOD	DBE	Division 10 supplier of fire extinguishers, fire extinguisher cabinets, access panels, roof hatch, and smoke ventilations. Servicing of fire extinguishers.	423990 - Fire extinguisher sales combined with rental and/or service, merchant wholesalers
Austin Specialties, Inc.	Austin Fire & Safety	STANWOOD	WBE	Division 10 supplier of fire extinguishers, fire extinguisher cabinets, access panels, roof hatch, and smoke ventilations. Servicing of fire extinguishers.	423990 - Fire extinguisher sales combined with rental and/or service, merchant wholesalers
Avidensa Consulting LLC		Everett	DBE	Provides Records and Information Management (RIM) and Information Governance (IG) expertise to public agencies, nonprofit organizations, private companies, law firms, and medical practices.	541512 - Computer software consulting services or consultants; 541611 - Records in management consulting services
Avidensa Consulting LLC		Everett	MBE	Provides Records and Information Management (RIM) and Information Governance (IG) expertise to public agencies, nonprofit organizations, private companies, law firms, and medical practices.	541512 - Computer software consulting services or consultants; 541611 - Records in management consulting services
AW Pottery NW Inc.	AW Pottery NW Inc.	Lynnwood	MBE	Wholesale distributor of garden planters and accessories.	424990 - Art goods merchant wholesalers
B. & V. Hand Inc.	Skagit Grand Central Collision Repair	Burlington	MBE	Provides auto and heavy collision repair services.	811111 - Automotive repair and replacement shops, general
BAL & BAL 200803465 INC	Signs Now Washington	Everett	DBE	Graphic design services and the manufacturing, designing, and installing of temporary traffic control signs, traffic control devices, construction signs, interior ADA signs, routed signs, temporary custom signs, permanent custom signs, signboards, banners, vehicle graphics, and trade show displays.	339950 - Signs and signboards (except paper, paperboard) manufacturing; 541430 - Graphic design services
BAL & BAL 200803465 INC	Signs Now Washington	Everett	MBE	Graphic design services and the manufacturing, designing, and installing of temporary traffic control signs, traffic control devices, construction signs, interior ADA signs, routed signs, temporary custom signs, permanent custom signs, signboards, banners, vehicle graphics, and trade show displays.	339950 - Signs and signboards (except paper, paperboard) manufacturing; 541430 - Graphic design services
Barbara Jo Gustafson	Healing Gardens	Mount Vernon	WBE	Landscape services including gardening, planting, trimming, weed removal, raking, soil, and organic fertilizing.	541790 - Landscaping services (except planning)
Belenus Solutions LLC	Belenus Solutions, LLC	Granite Falls	MBE	Provides business management consulting services to private and government agencies: improve productivity, streamline the supply chain, manage labor solutions, provide employee training, finance, sales, marketing, manufacturing, IT, networking and warehouse operations consulting services.	541512 - Systems integration design consulting services, computer; 541611 - Business management consulting services; 541613 - Marketing management consulting services; 611400 - Professional development training
Bellastro Construction Inc.	Bellastro Construction Inc.	Burlington	MBE	General contracting framing services for residential and commercial projects.	238130 - Framing contractors

OMWBE DIRECTORY FOR ISLAND, SIKAGIT, WHATCOM AND SNOHOMISH COUNTIES  
STATE OF WASHINGTON

**Certified Directory**  
Results filtered by search parameters

The information provided in this file is not to be used for unsolicited advertising, spam, or any other unauthorized use.

	Company Name	DBA Name	City	Certification Type	Capability	Commodity Codes
A-Crooked Coop LLC	The Coop		Morroe	WBE	Pet supply and toy wholesaler. Manufacturer of stuffed toys.	399930 - Stuffed toys (including animals) manufacturing; 424930 - Pet supplies (except pet food) merchant wholesalers
A-1 Landscaping and Construction Inc	A-1 Landscaping and Construction		Snohomish	NBE	Landscaping to include: installing trees, shrubs, lawns, gardens, and plants. Construction management in: outdoor recreational facility such as sports fields, parks, play areas; and water and sewer line installation and removal.	237110 - Construction mngement, water and sewer line; 237990 - Construction management, outdoor recreation facility; 661780 - Landscaping services (except planning)
Asai Metal Company	Asai Metal Company		Mukilteo	NBE	Metal and electronic waste recycling center.	423930 - Recyclable materials (e.g., glass, metal, paper) merchant wholesalers; 562111 - Recyclable material collection services
Advanced Interior Services Inc.	Advanced Interior Services Inc.		Lynnwood	NBE	Drywall, metal stud framing, light gauge framing, interior and exterior painting contractors	238130 - Framing contractors; 238310 - Drywall contractors; 238920 - Painting (except roof) contractors
Advanced Technology Computers Inc	Advanced Technology Computers Inc.		Bothell	DBE	Managed service provider, IT support, IT repair, IT maintenance, and installation.	541512 - Computer systems integration analysis and design services; 541513 - Computer systems facilities (i.e., clients' facilities) management and operation services; 541519 - Computer systems integration analysis and design services; 541513 - Computer systems facilities (i.e., clients' facilities) management and operation services; 541519 - Computer system recovery services; 541519 - Software installation services; computer
Adm and Son Company Inc.	Wide Shoes Only		Edmonds	NBE	Retail specialty shoe store that caters to wide shoes only, fun fashionable shoes in wide sizes.	448210 - Shoe Stores
ADH+MAD	ADH+MAD		Snohomish	M/WBE	Residential and commercial cleaning and organizing services. Services include: light or deep cleaning, laundry, dusting, window washing, changing bed linen, cleaning floors, kitchens, bathrooms, and appliances, light or deep cleaning prior to meetings or events, post-construction clean-up, office cleaning.	561720 - Building cleaning services, interior
Airflow Mechanical Inc	Airflow Mechanical Inc		Lynnwood	DBE	HVAC/Mechanical Contracting for Commercial and Institutional facilities.	238220 - Heating, ventilation and air-conditioning (HVAC) contractors
Airflow Mechanical Inc	Airflow Mechanical Inc		Lynnwood	NBE	HVAC/Mechanical Contracting for Commercial and Institutional facilities.	238220 - Heating, ventilation and air-conditioning (HVAC) contractors
Algebra's Family Services	Algebra's Family Services		Bellingham	WBE	Visitation service provider that provides services related to supervising visitation between parents & their children in the foster care system, and promoting the parent-child relationship.	624130 - Family welfare services
Alice L Blanchard Attorney at Law	Alice L Blanchard Attorney at Law		Langley	WBE	Civil law practice includes representation in the following areas: wills, probate, trusts, real estate, property disputes, business formation, and construction issues.	541110 - Law offices
All About Blinds NW, LLC	All About Blinds NW, LLC		Grainger Falls	DBE	Retail/commercial sales and installation of custom window treatments. Horizontal blinds (wood, faux wood & aluminum), Vertical blinds & shades, cellular/honeycomb, pleated, roller, roman & sunscreen shades, woven wood, draperies & interior shutters. Some products are fire retardant. Motorized & cordless options.	238330 - Window shade and blind installation; 423220 - Window shades and blinds merchant wholesalers
All About Blinds NW, LLC	All About Blinds NW, LLC		Grainger Falls	WBE	Retail/commercial sales and installation of custom window treatments. Horizontal blinds (wood, faux wood & aluminum), Vertical blinds & shades: cellular/honeycomb, pleated, roller, roman & sunscreen shades, woven wood, draperies & interior shutters. Some products are fire retardant. Motorized & cordless options.	238330 - Window shade and blind installation; 423220 - Window shades and blinds merchant wholesalers
Americad LLC	Americad		Bothell	NBE	Provides 3D drafting, 3D modeling, 3D rendering and 3D animation services related to CAD/CAM.	541340 - Computer aided design drafting (CADD) services
American Relocation Solutions LLC	American Relocation Solutions		Bothell	WBE	Provides placement and relocation services to professionals and employees.	563311 - Placement agencies or services, employment
Anorterra LLC	Anorterra		Bellingham	NBE	Civil engineering services performing work in water and natural resources engineering, fish passage design, ecological restoration of rivers, streams and wetland providing project management, construction management, construction oversight and inspection.	541330 - Civil engineering services

**OMWBE DIRECTORY FOR ISLAND, SKAGIT, WHATCOM AND SNOHOMISH COUNTIES**

<b>Company Name</b>	<b>DBA Name</b>	<b>City</b>	<b>Certification Type</b>	<b>Capability</b>	<b>Commodity Codes</b>
WOODBURN COMPANY	WOODBURN COMPANY	Everett	MBE	For over 50 years we have strived to do "whatever it takes" for our customers. We are Office equipment merchant wholesalers, we sell printers, computers and copy machines to merchants wholesale. We also offer office machine repair and maintenance services.	423420 - Office equipment merchant wholesalers; 423430 - Printers, computer, merchant wholesalers; 811212 - Office machine repair and maintenance services (except communication equipment)
Wordcrafters Northwest www.greenrooffarm.diy.com	Wordcrafters Northwest GREEN ROOF FARMS DIY	Bellingham	MWBE	Transcription services including audio and video files, dissertation typing and word processing.	554110 - Transcription services
www.greenrooffarm.diy.com	GREEN ROOF FARMS DIY	Acme	DBE	Product Customization and embellishments. Ranging from Embroidery and iron on application to garments and fabric items to commercial grade vinyl applied to hard surface items.	315210 - Cut and Sew Apparel Contractors
York Export, Inc.	YORK BUILDING SERVICES	Lynnwood	MBE	Product Customization and embellishments. Ranging from Embroidery and iron on application to garments and fabric items to commercial grade vinyl applied to hard surface items.	315210 - Cut and Sew Apparel Contractors
Zsaki Consulting LLC Zuiderweg Construction LLC	Zsaki Properties and Suites Zuiderweg Construction LLC	Edmonds Arlington	MBE WBE	Perform repairs, maintenance and a provider of janitorial services for commercial entities. Janitorial services. Furnish and rent residential apartments with premium amenities. Licensed general contractor specializing in HVAC, water and well treatment service, and gas, medical gas, sewer and water piping.	561720 - Janitorial services 531110 - Lessors of residential buildings and dwellings 238220 - HVAC (heating, ventilation and air conditioning) contractors

Generated from the B2Gnow System.

Page 25



## OMWBE DIRECTORY FOR ISLAND, SKAGIT, WHATCOM AND SNOHOMISH COUNTIES

Company Name	DBA Name	City	Certification Type	Capability	Commodity Codes
Valdez Construction Inc.	Valdez Construction Inc.	Oak Harbor	DBE	Excavating, earth-moving, site preparation and land clearing contractors. Demo of buildings and structures with excavator. Underground cable laying. Residential, commercial, and institutional building renovations and alterations. Retaining wall construction with ecology blocks. Natural gas, storage, sewer, & pipe connection construction. Concrete repair of highway, road, street, bridge or airport runway. Concrete forming for footings, foundations, sidewalks and trail construction. Carpet & installation. Install irrigation systems for water distribution. Sediment control and erosion control. Foundation and foundation repair. Paving and including water flow.	221310 - Water distribution for irrigation; 236118 - Addition, alteration and renovation, residential building, general contractors; 236220 - Addition, alteration and renovation for sale buildings, commercial and institutional building; 237110 - Sewer main, pipe and connection, construction; 237120 - Storage tank, natural gas or oil, tank farm or field, construction; 237130 - Cable laying (e.g., cable television, electricity, marine, telephone), including underground; 237310 - Repair, highway, road, street, bridge or airport runway; 237336 - Trail construction; 238110 - Flooring and foundation concrete contractors; 238140 - Retaining wall, masonry (i.e., block, brick, stone), construction; 238130 - Concrete form contractors; 238220 - Plumbing and heating contractors; 238300 - Carpet, installation only; 238310 - Excavating, earthmoving or landscaping services (except paving); 238390 - Sidewalk construction, residential and commercial; 238730 - Land clearing contractors; 238990 - Sidewalk construction, residential and commercial
Valdez Construction Inc.	Valdez Construction Inc.	Oak Harbor	MBE	Excavating, earth-moving, site preparation and land clearing contractors. Demo of buildings and structures with excavator. Underground cable laying. Residential, commercial, and institutional building renovations and alterations. Retaining wall construction with ecology blocks. Natural gas, storage, sewer, & pipe connection construction. Concrete repair of highway, road, street, bridge or airport runway. Concrete forming for footings, foundations, sidewalks and trail construction. Carpet & tile installation. Install irrigation systems for water distribution. Erosion control services: install floating silt curtains, hay, silt fencing, sand bags, and straw bales. Sediment removal and reinforce embankments with rip rap. Creek and stream restoration including water flow.	221310 - Water distribution for irrigation; 236118 - Addition, alteration and renovation, residential building, general contractors; 236220 - Addition, alteration and renovation general contractors, commercial and institutional building; 237110 - Sewer main, pipe and connection, construction; 237120 - Storage tank, natural gas or oil, tank farm or field, construction; 237130 - Cable laying (e.g., cable television, electricity, marine, telephone), including underground; 237310 - Repair, highway, road, street, bridge or airport runway; 237390 - Trail construction; 238110 - Flooring and foundation concrete contractors; 238140 - Retaining wall, masonry (i.e., block, brick, stone), construction; 238130 - Concrete form contractors; 238220 - Plumbing and heating contractors; 238300 - Carpet, installation only; 238310 - Excavating, earthmoving or landscaping services (except paving); 238390 - Sidewalk construction, residential and commercial; 238730 - Land clearing contractors; 238990 - Sidewalk construction, residential and commercial
Vida Environmental LLC	Vida Environmental LLC	Bellingham	WBE	Environmental consulting, writing, outreach, and facilitation services for local/state/government & universities for riparian restoration and creek habitat restoration. Public outreach and education. Environmental assessment, oil spill prevention, research, response policy & outreach/education. Stakeholder & public engagement to develop communication/strategies/materials to targeted audiences for natural/water resource conservation objectives.	541620 - Environmental consulting services
Vega Nguyen Research, LLP		Bellingham	MBE	Provides qualitative and quantitative research that uses survey design, phone surveys, online surveys, focus groups, door-to-door surveys, impact measurement, in-depth interviews, statistical analysis, and report writing.	541611 - Administrative Management and General Management Consulting Services; 541720 - Research and Development in the Social Sciences and Humanities; 541310 - Marketing Research and Public Opinion Polling
Waterfront Environmental	Waterfront Environmental	Sedro-Woodley	WBE	A landscape architecture and environmental planning consulting firm providing design and permitting services for private and public clients. Providing all phases of project planning and implementation, including project management, design, permitting, agency coordination, and construction administration. Offering services in environmental regulations, natural resource issues, and streamlining and negotiating permit conditions for federal, state, and local permits and approval for projects ranging from small scale development to public and private multi-million dollar projects with complex ecological and regulatory issues.	541620 - Environmental consulting services
Weslin Consulting Services, Inc.		Bellingham	DBE	Urban and multi-modal transportation planning services including public and private transit and pedestrian and bicycle. Freight and curb space management, complete streets, public involvement, and high capacity transportation solutions.	541320 - Urban planners' offices; 541611 - General management consulting services
Weslin Consulting Services, Inc.		Bellingham	WBE	Urban and multi-modal transportation planning services including public and private transit and pedestrian and bicycle. Freight and curb space management, complete streets, public involvement, and high capacity transportation solutions.	541320 - Urban planners' offices; 541611 - General management consulting services
Whitman & Associates, Inc.	Whitman Global Carpet Care	Woodville	WBE	Commercial hard floor surfaces and carpet cleaning services. Outdial cleaning services: deep clean and gloss wax of floors.	561720 - Building cleaning services, janitorial; 561740 - Upholstery cleaning on customers' premises
Whitney 220 Property LLC	Whitney 220 Property LLC	Edmonds	WBE	Manager residential rental property.	591110 - Apartment building rental or leasing
WHITNEY 608 PROPERTY LLC	WHITNEY 608 PROPERTY LLC	Edmonds	WBE	Manager residential rental property.	591110 - Apartment building rental or leasing



**OWMBE DIRECTORY FOR ISLAND, SKAGIT, WHATCOM AND SNOHOMISH COUNTIES**

Company Name	DBA Name	City	Certification Type	Capability	Commodity Codes
The Kriebel Company Inc.	The Kriebel Company Inc.	Granite Falls	WBE	Consulting services; inspection and reporting hazardous materials; design and project management and cost estimation for removal of hazardous materials.	541210 - Environmental consulting services
The Landlows Exchange Inc.	The Landlows Exchange Inc.	Burlington	WBE	Provides interpreters and translators for more than 20 languages.	541520 - Language interpretation services
The Philbin Group	The Philbin Group	Bow	WBE	Landscape architecture and design.	541720 - Landscape architectural services
The Simple Approach LLC	Marilyn Langdon, Holledge & Design, The Simple Approach	Mukilteo	WBE	Provider of computer software training; technical writing, web designing, preparation of training materials, and general business consulting services.	541111 - WBE (i.e., inferred) page design services; custom 541420 - Computer software training; 611430 - Professional development training; 711510 - Technical writers, independent
Three Bears, LLC	Arrow Traffic Control and Native Restoration	Starwood	DBE	Environmental restoration focused on the removal of invasive species and installation of native plants, trees, and shrubs. Traffic control services include traffic control plans, traffic control supervisors, laborers, and flaggers.	561720 - Landscape contractors (except construction); 561300 - Flagging (i.e., traffic control) services
Three Bears, LLC	Arrow Traffic Control and Native Restoration	Starwood	MWBE	Environmental restoration focused on the removal of invasive species and installation of native plants, trees, and shrubs. Traffic control services include traffic control plans, traffic control supervisors, laborers, and flaggers.	561720 - Landscape contractors (except construction); 561300 - Flagging (i.e., traffic control) services
TINA OMRE DDS	Everett Endodontics	Everett	WBE	DDS practice. Endodontics.	822110 - Endodontic offices (e.g., centers, clinics)
TORREY PINE LLC	Torrey Pine LLC	Edmonds	MWBE	Lessors of nonresidential buildings.	531120 - Lessors of nonresidential buildings (except miniwarehouses)
TOWN & COUNTRY OFFICE CLEANING CO	Town & Country Office Cleaning Co	Lynnwood	WBE	Janitorial services specializing in cleaning offices, shelters, butcher shops, condominiums, bus stops and buses.	561720 - Janitorial services
TOWN & COUNTRY OFFICE CLEANING CO	Town & Country Office Cleaning Co.	Lynnwood	DBE	Janitorial services specializing in cleaning offices, shelters, butcher shops, condominiums, bus stops and buses.	561720 - Janitorial services
TRAFFIC DATA GATHERING	Traffic Data Gathering	Lake Stevens	WBE	Traffic data collection. Movement counts, automatic traffic counters, origin destination surveys, travel time, GPS studies, parking surveys.	541330 - Traffic engineering consulting services
TRIPLANET TECHNOLOGIES INC	Triplanet Technologies Inc	Mount Vernon	DBE	IT consulting services and custom computer programming. Oracle, MS SQL database design, software development, SharePoint, network design, and PeopleSoft. Temporary staffing; IT, administrative assistants, project management, accounting, and construction.	541111 - Computer programming services, custom; 541512 - Information management computer systems integration design services; 551320 - Temporary staffing services
TRIPLANET TECHNOLOGIES INC	Triplanet Technologies Inc	Mount Vernon	WBE	IT consulting services and custom computer programming. Oracle, MS SQL database design, software development, SharePoint, network design, and PeopleSoft. Temporary staffing; IT, administrative assistants, project management, accounting, and construction.	541111 - Computer programming services, custom; 541512 - Information management computer systems integration design services; 551320 - Temporary staffing services
Twisted Metal LLC	Twisted Metal LLC	Everson	DBE	Welding on-site contractor. Stairway, ornamental, ladder, fire escape, balcony, decorative steel and wrought iron metal work installation. Structural metal manufacturing and structural steel erecting contractors. Manufacturers and installers of cages and steel guard rail barriers for bridges. Steel and wood framing contractors. Traffic control flagging services.	237110 - Bridge decking construction; 238120 - Structural steel erecting or iron work contractors; 238120 - Steel framing contractors; 238130 - Welding on site, contractors; 332322 - Fabricated structural metal manufacturing; 541530 - Flagging (i.e., traffic control) services
Twisted Metal LLC	Twisted Metal LLC	Everson	MWBE	Welding on-site contractor. Stairway, ornamental, ladder, fire escape, balcony, decorative steel and wrought iron metal work installation. Structural metal manufacturing and structural steel erecting contractors. Manufacturers and installers of cages and steel guard rail barriers for bridges. Steel and wood framing contractors. Traffic control flagging services.	238130 - Balcony, metal, installation; 238130 - Decorative steel and wrought iron work installation; 238130 - Fire escape installation; 238130 - Ornamental metal work installation; 238130 - Stairway, metal, installation; 238130 - Welding on site, contractors; 332312 - Fabricated structural metal manufacturing; 561330 - Flagging (i.e., traffic control) services

**OMWBE DIRECTORY FOR ISLAND, SKAGIT, WHATCOM AND SNOHOMISH COUNTIES**

Company Name	DBA Name	City	Confidentiality Type	Capability	Commodity Codes
Sound Integration for Behavioral Healthcare	Sound Integration for Behavioral Healthcare	Arlington	WBE	Training, consulting, and counseling on the topics of substance use disorders including screening, brief intervention and referral to treatment, behavioral healthcare integration, medication assisted treatment, co-occurring disorders, ASAM PPC, suicide intervention, and brief negotiated interventions.	621330 - Social workers', mental health, offices (e.g. centers, clinics)
Sound Promises For Children Inc.	Harbour Pointe Montessori School	Mukilteo	WBE	Montessori education. Private school-preschool kindergarten, children's education.	611110 - Montessori schools, alien entry or secondary
South Sound Refrigeration		Ferndale	WBE	Heating/ventilation, and Air Conditioning for commercial and residential clients. Commercial kitchen equipment repair and services. New construction build-out, retrofit equipment installation HVAC service & repair.	238220 - HVAC (heating, ventilation and air-conditioning) contractors; 811310 - Commercial refrigeration equipment repair and maintenance services
Spa Violet Ray Inc	Spa Violet Ray Inc	Silvana	WBE	Provides day spa services and retail beauty products, skin care, make up, hair products, candles, wellness items and spa items.	446120 - Beauty supply stores; 812112 - Beauty salons; 812113 - Nail salons
Spice Hut Corporation	Spice Hut	Bellingham	MWBE	Retail of spices, spice blends, spice accessories, loose leaf teas, packed teas, tea accessories, and baked goods.	424490 - Spices merchant wholesalers
Stacey K Um LLC	Stacey K Um LLC	Everett	MWBE	Lessor of nonresidential buildings.	531120 - Building, nonresidential (except multiunit housing), rental or leasing
Starfall Trendlines Consultants Inc	Starfall Trendlines Consultants Inc	Lynnwood	WBE	Engineering services for underground construction, design, feasibility, bid & inspection.	541390 - Engineering services
Stop Claims Corp	Stop Claims Corp.	Everett	WBE	Third party administrator for worker's compensation claims as advocates for employees. A team of medical and legal professionals mitigates and puts a stop to unfair, unjust and fraudulent worker's compensation claims. Specializing in risk management and dispute resolution. Representing (LO) Industrial Insurance (LO) Worker's compensation claim manager decisions.	542491 - Insurance claims investigation services; 542492 - Insurance claims processing services; third party
Strategic Implementation Advancing		Mukilteo	WBE	Technical and professional services for the government and the private sector. Services range from general business through multi-disciplinary technical project consulting and program management services.	541611 - Business management consulting services; 541618 - Other Management Consulting Services; 541630 - Other Scientific and Technical Consulting Services; 541990 - All Other Professional, Scientific, and Technical Services
Studio Donna Inc.	Studio Donna Salon Spa	Everett	WBE	Full service salon and spa. Hair cutting, styling, coloring, straightening, perming, cleansing, moisturizing, peels and treatments for skin, pedicures, manicures, and massages.	812112 - Beauty salons; 812113 - Pedicure and manicure salons
Sue's Herbs and Spices, LLC		Mukilteo	MWBE	An online retail store. The products sold fall under food and beverages predominantly herbs and spices, including vinegars, sauces and other cooking related items. Products sold are teas, candy, natural sweeteners and dried fruits.	454111 - Internet retail sales sites
SULTAN LIQUOR AND CONVENIENCE LLC	Sultan Liquor and Convenience LLC	Sultan	WBE	Retail liquor, beer and wine sales.	445310 - Liquor stores, package
SYLMETER SMOOTHIES LLC	EMERALD CITY SMOOTHIE	SHORELINE	WBE	Made to order healthy smoothies and acai bowls with veggie, vegetarian, gluten free, dairy free, & soy free options. Pre-made food such as sandwiches, boiled eggs, hummus, & bakery items. Sheds like chips & protein bars. Bottled beverages such as water and energy drinks.	445291 - Baked Goods Stores; 722513 - Family restaurants, limited service; 722515 - Beverage (e.g., coffee, juice, soft drink) bars, nonalcoholic, fixed location
Tanager Technologies Inc.		Bothell	WBE	Custom software design and consulting services firm specializing in Microsoft technology and enterprise level applications development. Services include custom applications, system integration, business analysis, product support, project management, technical analysis, and training.	541510 - Computer software analysis and design services, custom; 541512 - Computer systems integration design consulting services
TEABONNE INC	TEABONNE INC	Edmonds	WBE	WIRELESS TELECOM CONSULTING & TEMP STAFF PLACING IN RADIO FREQUENCY (RF) ENGINEERING, UNIVERSAL MOBILE TELECOM SYSTEM (UMTS), LONG TERM EVOLUTION (LTE) & OPTIMIZING DESIGN, DEVELOPMENT, MAINTENANCE & TECH OPERATIONS FOR WIRELESS & DATA NETWORK SYSTEMS.	541618 - Telecommunications management consulting services; 561320 - Temporary staffing services
The Comply Co.	The Comply Co.	Ferndale	WBE	Manufacturing and distributor of 100% woven polyester sheeting and bedding for hospitals and medical facilities. Also retail and wholesale sales of medical products. The best in durability, sustainability, design and safety. High performance, superior quality microfiber is comparable to 600-thread count sheets. Sheet sets, pillow cases, duvet covers, quilted blankets, and shams.	314120 - Bedspreads and bed sets made from purchased fabrics; 454111 - Internet retail sales sites
The Grondahl Agency Inc.	The Grondahl Agency Inc.	Everett	WBE	Insurance sales and service.	524210 - Brokerages; insurance

## OMWBE DIRECTORY FOR ISLAND, SKAGIT, WHATCOM AND SNOHOMISH COUNTIES

Company Name	DBA Name	City	Certification Type	Capability	Commodity Codes
Schira Consulting	Celt M. Schira, P.E.	Bellingham	DBE	Electrical design including power, lighting, communications and solar electric power for commercial, light industrial, multifamily, government and academic buildings, and parks.	541330 - Electrical engineering services
Schira Consulting	Celt M. Schira, P.E.	Bellingham	WBE	Electrical consulting and design services. Work on educational and healthcare buildings, commercial, industrial, military, residential developments, mixed use and multi-family buildings. Power distribution, panel schedules, grounding, load and fault calculations, transformer upgrades. Bid support and construction supervision. Prepare engineers estimates and writing specifications. Lighting design, photo metric level plans, electrical system upgrades to current codes, emergency backup systems, solar system design, communications systems design.	541330 - Electrical engineering services
Seattle Asbestos Test LLC	Seattle Asbestos Test LLC	Lynnwood	MBE	Environmental testing, impact, and consulting specializing in asbestos.	541380 - Testing laboratories (except medical, veterinary)
Shante Akai Talkington	Indian Pony Ridge	Snohomish	MWBE	Silo (4 sale) dump trucking services. Export and import rock, gravel, topsoil, slurry, hog fuel, sand, bark, brush & stumps, new asphalt, recycled asphalt, recycled concrete and other natural heavy materials.	484220 - Dump trucking (e.g., gravel, sand, topsoil)
Shipley Specialties LLC	Shipley Specialties LLC	Arlington	DBE	Merchant wholesale supplier for commercial equipment (bathroom accessories & fixtures, lockers (all types), mail boxes, corner guards, white and cork boards, and projection screens.	423440 - Fixtures, store (except refrigerated), merchant wholesalers; 423440 - Hotel equipment and supplies (except furniture) merchant wholesalers; 423440 - Lockers (except refrigerated) merchant wholesalers; 423440 - Partitions merchant wholesalers
Shipley Specialties LLC	Shipley Specialties LLC	Arlington	WBE	Merchant wholesale supplier for commercial equipment (bathroom accessories & fixtures, lockers (all types), mail boxes, corner guards, white and cork boards, and projection screens.	423440 - Fixtures, store (except refrigerated), merchant wholesalers; 423440 - Hotel equipment and supplies (except furniture) merchant wholesalers; 423440 - Lockers (except refrigerated) merchant wholesalers; 423440 - Partitions merchant wholesalers
Shorebird Creative LLC	Shorebird Creative	Mukilteo	WBE	Full service copywriting, graphic design, and advertising studio helping businesses, non-profits, publishers, authors, consultants, and governmental agencies. Services include: advertising design and copy, blogs, book and e-book cover and page design, brand identity and logos, brochures, catalogs, creative copy and editing, cut sheets and line cards, document multi-sourcing, infographics, journals, and design, long documents, marketing materials, marketing collateral, newsletter design, photo copy, presentation and slide decks, print production, social media, project development and management, and software training in Adobe InDesign.	541430 - Graphic design services; 561410 - Editing services; 611420 - Software application training
Shurich Yamaguchi DDS PS	19th Avenue Dental	Everett	MBE	Dental treatment.	621210 - Dentist offices (e.g., centers, clinics)
Sierra Media, Inc.	Bakerbuilt Works	Everett	MBE	Professional video production and digital marketing services for businesses.	511110 - Motion picture and video production; 512191 - Teleproduction services; 541613 - Marketing consulting services
Sims Cleaning Service	Sims Cleaning Service	Bellingham	MBE	Provides janitorial and carpet cleaning services.	561720 - Janitorial services; 561740 - Cleaning carpets
Solistic LLC	PNW Power Supply	Arlington	DBE	Electrical contracting work with residential, commercial, and industrial structures. Utility line construction. Electrical parts wholesaler.	237130 - Utility line (i.e., communication, electric power), construction; 238210 - Electrical contractors; 423610 - Connectors, electrical, merchant wholesalers
Solistic LLC	Solistic LLC	Arlington	MWBE	Electrical contracting work with residential, commercial, and industrial structures.	238210 - Electrical contractors
Song Periodontics and Dental Implants PLLC	Song Periodontics and Dental Implants PLLC	Edmonds	MWBE	Periodontics and dental implant-related health services.	621210 - Periodontists' offices (e.g., centers, clinics)
Sonu Lamba & Paul Kahlton P.S.	Stellar Kids Dentistry	Mukilteo	MBE	Family/pediatric dentist office offering services to low income individuals.	621210 - Family dentist offices (e.g., centers, clinics)
Soto and Sons Construction LLC	Soto and Sons Construction LLC	Everton	DBE	Utility line including underground sewer, storm water, & water lines. Excavation/grading/site preparation & land clearing. Road construction. Retaining wall such as ecology blocks, rock baskets, and concrete. Erosion control limited to silt fence/hay/straw/control blankets & sediment ponds. Dump trucking of sand & gravel.	237110 - Utility line (i.e., sewer, water), construction; 237310 - Road construction; 238110 - Retaining wall (except anchored earth), poured concrete, construction; 238140 - Retaining wall, masonry (i.e., block, brick, stone), construction; 238910 - Excavating, earthmoving, or land clearing contractors; 484220 - Dump trucking (e.g., gravel, sand, topsoil); 561730 - Landscaping services (except planning)
Soto and Sons Construction LLC	Soto and Sons Construction LLC	Everton	MBE	Utility line including underground sewer, storm water, & water lines. Excavation/grading/site preparation & land clearing. Road construction. Retaining wall such as ecology blocks, rock baskets, and concrete. Erosion control limited to silt fence/hay/straw/control blankets & sediment ponds. Dump trucking of sand & gravel.	237110 - Utility line (i.e., sewer, water), construction; 237310 - Road construction; 238110 - Retaining wall (except anchored earth), poured concrete, construction; 238140 - Retaining wall, masonry (i.e., block, brick, stone), construction; 238910 - Excavating, earthmoving, or land clearing contractors; 484220 - Dump trucking (e.g., gravel, sand, topsoil); 561730 - Landscaping services (except planning)

## OMWBE DIRECTORY FOR ISLAND, SKAGIT, WHATCOM AND SNOHOMISH COUNTIES

Company Name	DBA Name	City	Confitation Type	Capability	Commodity Codes
RLC Inc.	RLC Inc.	Mount Vernon	WBE	Inspection and construction for commercial and industrial buildings including labor, equipment, and supervision of erosion & dust control, maintenance, clear & grade, site demolition and grading, excavation & backfill, aggregate base courses & fine grading for all concrete and pavers.	236210 - Construction management, industrial building (except warehouses); 236220 - Construction management, commercial and institutional building; 541350 - Building inspection services
Roads West Inc.	Roads West Inc.	Arlington	MBE	Low voltage electrical contractor provides telecommunications and fiber optic cable installation.	238210 - Telecommunications equipment and wiring (except transmission line) installation contractors
Rod Steele Inc.	Steele & Associates Hardscapes Specialists	BELLINGHAM	DBE	Retaining wall/MSE block, precast concrete/brick pavers, commercial & residential concrete driveways/parking areas and finishing.	237310 - Concrete paving (i.e., highway, road, street, public sidewalk); 238440 - Retaining wall, masonry (i.e., block, brick, stone), construction; 238930 - Concrete paving, residential and commercial driveway and parking area
Rod Steele Inc.	Steele & Associates Hardscapes Specialists	BELLINGHAM	MBE	Retaining wall/MSE block, precast concrete/brick pavers, commercial & residential concrete driveways/parking areas and finishing.	237310 - Concrete paving (i.e., highway, road, street, public sidewalk); 238440 - Retaining wall, masonry (i.e., block, brick, stone), construction; 238930 - Concrete paving, residential and commercial driveway and parking area
Roy Frinkbomer Trucking		Ferralee	DBE	Dump truck hauling including asphalt, rock, demolition, gravel, sand and top soil.	484220 - Dump trucking (e.g., gravel, sand, top-soil)
Roy Frinkbomer Trucking		Ferralee	MBE	Dump truck hauling including asphalt, rock, demolition, gravel, sand and top soil.	484220 - Dump trucking (e.g., gravel, sand, top-soil)
ROY T CHEN/DND MS LLC	ANACORTES DENTAL ARTS	Anacortes	MBE	Dental practice dedicated to providing services related to the practice of general dentistry.	822210 - DMDs' (doctors of dental medicine) offices (e.g., centers, clinics)
Rolla Seven LLC	Rolla Seven	Lynnwood	WVBE	Provider in writing research, brand development, and outreach services.	541610 - Business management consulting services; 541313 - Marketing consulting services; 541910 - Marketing research services
Ryan Chuang DDS	Ryan Chuang DDS	Everett	MBE	Family dentistry providing comprehensive dental care for patients of all ages.	822210 - Family dentist' offices (e.g., centers, clinics)
Ryan Chuang LLC	Bellingham Ace Hardware	Everett	MBE	Lessor of commercial real estate buildings.	531120 - Lessors of nonresidential buildings (except miniwarehouses)
S & A Ventures Inc	Bellingham Ace Hardware	Bellingham	WBE	Hardware store engaged in retailing a general line of new hardware items, such as tools and builders' hardware.	444330 - Hardware stores
S & S Concrete Const Inc	S & S Concrete Const Inc	Bellingham	WBE	Contractor specializing in the removal and setting, placing, pouring and finishing concrete and structural elements on curbs, gutters, sidewalks, and flat work.	238990 - Curb and gutter construction, residential and commercial driveway and parking area, concrete
S & S Concrete Const Inc	S & S Concrete Const, Inc.	Bellingham	DBE	Contractor specializing in the removal and setting, placing, pouring and finishing concrete and structural elements on curbs, gutters, sidewalks, and flat work.	238990 - Curb and gutter construction, residential and commercial driveway and parking area, concrete
Salinas Construction Inc.	Salinas Construction Inc.	Mukilteo	DBE	Airport runway concrete construction; Concrete paving (i.e., highway, road, street, public sidewalk), curbs and gutters on highway, road, street, bridge, highway, road, street and airport runway; Paving, highway, road, street, bridge, tunnel, or airport runway (Concrete); Sidewalk, public construction; Concrete rail crossing forming, pouring and finishing, new or reconstruction; Railroad (cast concrete, cast in place rail, cast nelson studs, and set rebar in concrete); Construction of bridge decking and pier concrete topping.	237310 - Concrete paving (i.e., highway, road, street, public sidewalk)
Salinas Construction Inc.	Salinas Construction Inc.	Mukilteo	MBE	Airport runway concrete construction; Concrete paving (i.e., highway, road, street, public sidewalk), curbs and gutters on highway, road, street, bridge, highway, road, street, tunnel, or airport runway (Concrete); Sidewalk, public construction; Concrete rail crossing forming, pouring and finishing, new or reconstruction; Railroad (cast concrete, cast in place rail, cast nelson studs, and set rebar in concrete); Construction of bridge decking and pier concrete topping.	237310 - Concrete paving (i.e., highway, road, street, public sidewalk)
Sandustrial LLC		Bellingham	DBE	Residential, commercial and marine sandblasting, painting, and coating. Tank and mechanical cleaning. Contract Staffing & Personnel.	238160 - Painting, spraying, or coating, roof; 238320 - Painting (except roof) contractors; 238990 - Sandblasting, building exterior; 561320 - Temporary staffing services; 561991 - Tank cleaning services, septic
Sandustrial LLC		Bellingham	MBE	Residential, commercial and marine sandblasting, painting, and coating. Tank and mechanical cleaning. Contract Staffing & Personnel.	238160 - Painting, spraying, or coating, roof; 238320 - Painting (except roof) contractors; 238990 - Sandblasting, building exterior; 561320 - Temporary staffing services; 561991 - Tank cleaning services, septic

Page 20



## OMWBE DIRECTORY FOR ISLAND, SKAGIT, WHATCOM AND SNOHOMISH COUNTIES

Company Name	DBA Name	City	Certification Type	Capability	Commodity Codes
R. J. RICHARDS CE LLC	R. J. Richards CE LLC	Everett	DBE	Excavation, earthmoving, grading, demo, and land clearing contractors. Drainage system installation. Dredging channels, canal, ditch, waterway & water/sewer utility line construction. Trenching except underwater. Flagging and traffic control services.	237110 - Utility line (i.e., sewer, water), construction; 237930 - Dredging (e.g., canal, channel, ditch, waterway); 239310 - Excavating, earthmoving, or land clearing contractors; 561350 - Flagging (i.e., traffic control) services
R. J. RICHARDS CE LLC	R. J. Richards CE LLC	Everett	MBE	Excavation, earthmoving, grading, demo, and land clearing contractors. Drainage system installation. Dredging channels, canal, ditch, waterway & water/sewer utility line construction. Trenching except underwater. Flagging and traffic control services.	237110 - Utility line (i.e., sewer, water), construction; 237930 - Dredging (e.g., canal, channel, ditch, waterway); 239310 - Excavating, earthmoving, or land clearing contractors; 561350 - Flagging (i.e., traffic control) services
Rabbit Works LLC	Rabbit Works LLC	Anacortes	WBE	Lessor of nonresidential buildings.	531120 - Lessor of nonresidential building (except multi-warehouses)
Re-Julied Studio LLC	Re-Julied Studio	Edmonds	WBE	Retail store selling furnishings, art, accessories, gifts and design services for residential and commercial customers.	442110 - Furniture stores (e.g., household, office, outdoor); 541410 - Interior design services
Red Barn Engineering Incorporated	REC, Red Barn Engineering Inc.	Brier	DBE	Civil, erosion, environmental, water resources, surveying, and geotechnical engineering. The services within these areas are erosion and sediment control plans, storm water reports, drainage reports, design plans, specifications, and construction management. Geotechnical services include geotechnical design, geotechnical recommendations, utility coordination, shoreline design, & streets. Construction management, observation, steep slope analysis, infiltration testing, CECOL, construction monitoring, water quality & soil sampling, paving plans, horizontal control plans, water system modeling & design, storm water & sanitary sewer modeling & design, site development, transportation drainage, ADA compliant design of sidewalks, ramps, curb bulbs, & street design. Permitting services: HPA, JARPA, SEPA, 404, KOW.	541330 - Civil engineering services; 541370 - Land surveying services; 541380 - Geotechnical testing laboratories or services
Red Barn Engineering Incorporated	REC, Red Barn Engineering Inc.	Brier	WBE	Civil, erosion, environmental, water resources, surveying, and geotechnical engineering. The services within these areas are erosion and sediment control plans, storm water reports, drainage reports, design plans, specifications, and construction management. Geotechnical services include geotechnical design, geotechnical recommendations, utility coordination, shoreline design, & streets. Construction management, observation, steep slope analysis, infiltration testing, CECOL, construction monitoring, water quality & soil sampling, paving plans, horizontal control plans, water system modeling & design, storm water & sanitary sewer modeling & design, site development, transportation drainage, ADA compliant design of sidewalks, ramps, curb bulbs, & street design. Permitting services: HPA, JARPA, SEPA, 404, KOW.	541330 - Civil engineering services; 541370 - Land surveying services; 541380 - Geotechnical testing laboratories or services
Red Hummingbird Media Corporation	Red Hummingbird Media Corporation	Tulalip	MBE	Public affairs, strategic communications, planning and training.	541820 - Public relations consulting services
Red Laser Construction, LLC	Red Laser Construction, LLC	Groffside Falls	DBE	Construction survey services working as a signatory business with the International Union of Operating Engineers (IUOE) Local 302. Working with the union providing construction layouts on union construction projects. Supplying construction surveys to Washington State Contractors.	541370 - Construction surveying services
Reese Construction Company	Reese Trucking & Excavating	Marysville	DBE	Earthworks construction limited to water and sewer line installation; excavating grading, pothole filling, culvert construction; road construction; paving, asphalt milling; bituminous planning, and trucking limited to dump trucking and freight hauling.	237110 - Utility line (i.e., sewer, water), construction; 237310 - Asphalt paving (i.e., highway, road, street, public sidewalk); 237310 - Culverts, highway, road and street, construction; 237310 - Grading, highway, road, street, and airport runway; 237310 - Pothole filling, highway, road, street or bridge; 484110 - Trucking, general freight, local; 484220 - Dump trucking (e.g., gravel, sand, topsoil)
Ridhi PLLC	Highland Dental Center	Bothell	MBE	Dental services: preventive, restorative, salarials, crowns, fillings, bridges, and orthodontics.	801210 - Dentists' offices (e.g., centers, clinics)
Richard Mirades LLC	Richard Mirades LLC	Startup	WBE	Office rental or leasing of owner-occupied building.	531110 - Commercial building rental or leasing
Rhizome Design Inc.	Rhizome Design Inc.	Greenbank	WBE	Provides graphic design, branding, web development, writing, marketing consulting, photography and video services.	531110 - Video production; 541410 - Graphic design services; 541413 - Marketing consulting services; 541322 - Commercial Photography
RISQUE INC	COPY SOURCE	Bellevue	MBE	COPYING, DIGITAL PRINTING, OFFSET PRINTING, DESKTOP PUBLISHING, FINISHING SERVICES, BINDING, LAMINATION, FOLDING, LIMITED STATIONERY SUPPLIES	333111 - Postcards commercial printing (except screen) without publishing; 333113 - Job printing, screen; 452110 - Stationery stores; 561410 - Document preparation services; 561499 - Copy shops (except combined with printing services)

## OMWBE DIRECTORY FOR ISLAND, SKAGIT, WHATCOM AND SNOHOMISH COUNTIES

Company Name	DBA Name	City	Certification Type	Capability	Commodity Codes
Pearson Drilling, Inc.	Pearson Drilling Inc.	Marshall	DBE	Footings and foundation, drilling, pile driving, boring and excavation contractors. Drilling services: drilled shafts, bored, elevated jackshafts, soldier/halical piles, lagging walls. Pile driving services: install & removal of sheet piles, driven piles (i.e., wood, concrete, round, wide flange, H piles), and pin piles for deep foundations. Place rebar cages for bridge foundations.	237930 - Cofferdam construction; 238110 - Foundation, building, poured concrete, contractors; 238910 - Piling (i.e., bored, cast-in-place, drilled), building foundation, contractors
Pearson Drilling, Inc.	Pearson Drilling Inc.	Seattle	WBE	Footings and foundation, drilling, pile driving, boring and excavation contractors. Drilling services: drilled shafts, bored, elevated jackshafts, soldier/halical piles, lagging walls. Pile driving services: install & removal of sheet piles, driven piles (i.e., wood, concrete, round, wide flange, H piles), and pin piles for deep foundations. Place rebar cages for bridge foundations.	237930 - Cofferdam construction; 238110 - Foundation, building, poured concrete, contractors; 238910 - Piling (i.e., bored, cast-in-place, drilled), building foundation, contractors
People Systems Inc.	People Systems Inc.	Mount Vernon	WBE	Vocational consulting, skills analysis, legal testimony, testing, and guidance to injured workers.	624010 - Rehabilitation job counseling and training, vocational
PERCHED VALLEY PROPERTY MANAGEMENT	PERCHED VALLEY PROPERTY MANAGEMENT	Ferndale	WBE	REAL ESTATE PROPERTY MANAGEMENT	531120 - Lessors of nonresidential buildings (except miniwarehouses)
PERFECT SMILE ORTHODONTICS LLC	PERFECT SMILE ORTHODONTICS LLC	Ferndale	WBE	ORTHODONTIC CARE	521210 - Orthodontists' offices (e.g., dentists, clinics)
PERIAD INTERIORS LLC	Periad Office Design	MOOREHEAD	WBE	Commercial office interiors, tenant improvement systems, and furniture planning.	541410 - Interior design services
PRUDENT MANAGEMENT ASSOCIATE LLC	Prudent Management Associate LLC	Snohomish	WBE	Real estate rental of nonresidential properties.	531310 - Commercial property managers
Physibles, Inc.	Physibles, Inc.	Mulino	DBE	Construction management of civil projects. Sales and procurement in management. Engineering consulting services.	236220 - Construction management, commercial and institutional building; 541330 - Engineering consulting services; 541611 - General management consulting services
Physibles, Inc.	Physibles, Inc.	Mulino	WBE	Construction management of civil projects. Sales and procurement management. Engineering consulting services.	236220 - Construction management, commercial and institutional building; 541330 - Engineering consulting services; 541611 - General management consulting services
Puffin Island LLC	Puffin Island LLC	Everton	WBE	DSHS-certified supportive living agency, providing home care 24/7 to individuals with developmental disabilities.	621610 - Home health agencies; 624120 - Companion services for disabled persons, the elderly, and persons diagnosed with intellectual and developmental disabilities
Puget Sound Dumpster Services		Kent	DBE	Drop off and pickup of dumpster at jobsite for collection of non-hazardous construction waste, demolition debris, yard waste and environmentally safe recyclable materials. Haul full dumpster to dump, transfer station, recycling facility. Dumpster rentals.	532412 - Construction machinery and equipment rental or leasing without operator; 562111 - Recyclable material hauling, local; 562119 - Waste (except solid and hazardous) hauling, local
Puget Sound Dumpster Services		Kent	WBE	Drop off and pickup of dumpster at jobsite for collection of non-hazardous construction waste, demolition debris, yard waste and environmentally safe recyclable materials. Haul full dumpster to dump, transfer station, recycling facility. Dumpster rentals.	532412 - Construction machinery and equipment rental or leasing without operator; 562111 - Recyclable material hauling, local; 562119 - Waste (except solid and hazardous) hauling, local
Quality Coatings Inspection and Consulting, Inc.		Seagrass	DBE	Protective coatings application inspection and monitoring service. Look for corrosion, flaking, and how to stop corrosion on bridges, hydro electrical, petroleum, chemical, water, waste water, marine, and nuclear facilities. Services also include surveys and evaluation, material selection, specifications review and development, field and shop inspections, surface preparation inspection, proper coating application, witnessing mixing of coatings, ensuring proper materials are applied, measuring thickness of coating, and recording and reporting. NACE certified coatings inspectors, Levels 1, 2 and 3. TWIC card holder.	541630 - Other Scientific and Technical Consulting Services
Quality Coatings Inspection and Consulting, Inc.		Seagrass	WBE	Protective coatings application inspection and monitoring service. Look for corrosion, flaking, and how to stop corrosion on bridges, hydro electrical, petroleum, chemical, water, waste water, marine, and nuclear facilities. Services also include surveys and evaluation, material selection, specifications review and development, field and shop inspections, surface preparation inspection, proper coating application, witnessing mixing of coatings, ensuring proper materials are applied, measuring thickness of coating, and recording and reporting. NACE certified coatings inspectors, Levels 1, 2 and 3. TWIC card holder.	541630 - Other Scientific and Technical Consulting Services
QUIMBY'S CONCRETE LLC	Quimby's Concrete LLC	Bellingham	DBE	Construction contractor specializing in setting, placing, pouring and finishing concrete foundations and structural elements especially cuts, gutters, sidewalks, and flatwork.	238110 - Foundation, building, poured concrete, contractors; 238930 - Curb and gutter construction, residential and commercial driveway and parking area, concrete
QUIMBY'S CONCRETE LLC		Bellingham	WBE	Construction contractor specializing in setting, placing, pouring and finishing concrete foundations and structural elements especially cuts, gutters, sidewalks, and flatwork.	238110 - Foundation, building, poured concrete, contractors; 238930 - Curb and gutter construction, residential and commercial driveway and parking area, concrete

## OMWBE DIRECTORY FOR ISLAND, SKAGIT, WHATCOM AND SNOHOMISH COUNTIES

Company Name	DBA Name	City	Certification Type	Capability	Commodity Codes
Out West Landscape and Irrigation Inc.	Out West Landscape and Irrigation Inc.	Monroe	DBE	Landscape and irrigation / sprinkler installation on public roads & highways, public works, parks, playgrounds, rain gardens, green roof gardens, drainage structures, mitigation ponds, planters, lawn areas, roadway side slopes, and wetland to include trees, shrubs, ground cover, wetland mitigation, seeding, soil amendment, compost installation, erosion control limited to planting trees, shrubs and groundcover, hydro seeding, sod install, wetland seeding, vegetative geo-grid wall installation.	237110 - Irrigation project construction (except lawn), 238220 - Lawn sprinkler system installation, 561730 - Landscape installation services
Out West Landscape and Irrigation Inc.	Out West Landscape and Irrigation Inc.	Monroe	WBE	Landscape and irrigation / sprinkler installation on public roads & highways, public works, parks, playgrounds, rain gardens, green roof gardens, drainage structures, mitigation ponds, planters, lawn areas, roadway side slopes, and wetland to include trees, shrubs, ground cover, wetland mitigation, seeding, soil amendment, compost installation, erosion control limited to planting trees, shrubs and groundcover, hydro seeding, sod install, wetland seeding, vegetative geo-grid wall installation.	237110 - Irrigation project construction (except lawn), 238220 - Lawn sprinkler system installation, 561730 - Landscape installation services
P & G Landscaping Inc.	P & G Landscaping Inc.	Snohomish	WBE	Commercial and industrial landscaping, hydro seeding, wetland mitigation, straw mulching, and tree services; erosion control limited to erosion control blanket, wattle, soil amendment, seeding and fertilizing by hand, and compost.	561730 - Landscaping services (except planning), 561730 - Tree services (e.g., bracing, planting, pruning, removal, spraying, surgery, trimming)
Pacific CM LLC		Everett	DBE	Construction project, & risk management consulting service for commercial and industrial industries including, highway, street, road, bridges, viaducts, airports terminals, high rise offices, infrastructures, and large scale renovations. Water, sewer, and pipeline quality control, inspections and risk management service. Professional management and development training for DBE, MWBE, and SBE firms in bid preparation, bidding/invoicing, change order assistance, submittal process, scheduling/impact analysis, and workflow management.	236220 - Construction management, commercial and institutional building, 237110 - Construction management, water and sewer line, 237310 - Construction management, highway, road, street and bridge, 237930 - Construction management, mass transit, 541611 - Business management consulting services, 541590 - Pipeline inspection (i.e., visual) services, 811430 - Professional development training
Pacific Energy Network, Inc.		Mountlake Terrace	MBE	Provides sustainable energy solutions. Project developer, engineering, procurement, and construction contractor for large scale power generation projects. Comprehensive energy solutions for all power projects, including but not limited to, preparing clear and objective proposals, performing result-driven system analysis, building highly precise and accurate power system models, and efficiently engineering and designing for generation, transmission, distribution and substation. Services in the areas of manufacturing & procurement, project management, construction management, testing & commissioning post construction, operation & maintenance, and controls & protection panel fabrication.	236220 - Project Management, 541330 - Engineering services
Pacific Land Preservation LLC	Pacific Forestry Preservation	Marysville	DBE	Tree Service for thinning, planting, felling, pruning, chipping and removal of trees and shrubbery. Excavation for underground utilities, storm drains, catch basins, foundations. Excavator demolition of structures, concrete, and asphalt. Excavator rental by the hour. With operator. Landscape activities of soil amendments, spreading bark and mulch, tree and bush removal & replanting, landscape rock and boulder removal and placement. Snow plowing and de-icing residential, commercial, and industrial parking lots.	238910 - Excavation contractors, 561730 - Tree services (e.g., bracing, planting, pruning, removal, spraying, surgery, trimming)
Pacific Land Preservation LLC	Pacific Forestry Preservation	Marysville	MBE	Tree Service for thinning, planting, felling, pruning, chipping and removal of trees and shrubbery. Excavation for underground utilities, storm drains, catch basins, foundations. Excavator demolition of structures, concrete, and asphalt. Excavator rental by the hour with operator. Landscape activities of soil amendments, spreading bark and mulch, tree and bush removal & replanting, landscape rock and boulder removal and placement. Snow plowing and de-icing residential, commercial, and industrial parking lots.	238910 - Excavation contractors, 561730 - Tree services (e.g., bracing, planting, pruning, removal, spraying, surgery, trimming)
Palm Dogs, LLC	Primary Lending Source	Mountlake Terrace	MBE	Independent Loan brokers office specializing in SBA 7A, 504, and conventional finance for apartments, mix use, retail, industrial, office, and private equity for non bankable loans.	522292 - Real estate credit lending, 523310 - Loan brokers' offices (i.e., independent)
PARKER TRUCKING INC	Parker Trucking	TULALIP	MBE	Dump trucking and hauling of dirt, gravel, pipe bedding, aggregate, asphalt, and bedding.	484220 - Dump trucking (e.g., gravel, sand, top-soil)
PARKER TRUCKING INC	Parker Trucking	Marysville	DBE	Dump trucking and hauling of dirt, gravel, pipe bedding, aggregate, asphalt, and bedding.	484220 - Dump trucking (e.g., gravel, sand, top-soil)

## OMWBE DIRECTORY FOR ISLAND, SKAGIT, WHATCOM AND SNOHOMISH COUNTIES

Company Name	DBA Name	City	Certification Type	Capability	Commodity Codes
Northwest Ecological Services LLC	Northwest Ecological Services LLC	Bellingham	WBE	Provide a range of services associated with environmental review and permitting associated with water resources and wildlife. Services include delineation and identification of wetlands and streams, botanical and wildlife surveys, mitigation design and full permitting capabilities.	541620 - Environmental consulting services
Northwest Laundry Company LLC	Biro Laundry	Bellingham	WBE	Self-service laundromat and other laundry services, including washing, sanitizing, drying, folding, steam pressing, dry cleaning, and drop-off.	803310 - Laundry services, coin-operated or similar self-service; 812320 - Laundries (except coin-operated, linen supply, uniform supply)
Northwest Logo Products, LLC	Northwest Logo Products, LLC	Edmonds	WBE	Retailer of logo merchandise and promotional marketing items.	541890 - Advertising specialty (e.g., keychain, magnet, pen) distribution services
Nvelup Consulting Inc.	Nvelup Consulting	Bothell	DBE	SOFTWARE CONSULTING SERVICES: Oracle PBCS, Essbase, Hyperion Planning, Hyperion Financial Management, Public Sector Planning, Microsoft Sequel Server (SQL), Power BI, OBIEE/A, Dodeca, Office 365 suite training & configuration, Oracle FDMEE, E-T-L, ODI, Financial Reporting Studio, & Oracle Smart View for Office, PeopleSoft, Microsoft Power BI, Business Intelligence. Operating systems software install, Project Management, system analysis & design services. EMPLOYMENT EXECUTIVE SEARCH SERVICES: Work with client on researching, identifying, screening & interviewing candidates & assisting in final offer. HUMAN RESOURCES & ORGANIZATIONAL DEVELOPMENT: leadership training, custom training, business process improvement & salary administration. FINANCE CONSULTING: Financial close & consolidation, currency translation, planning & forecasting, assist with managing cash flow, implementation of aggressive high growth strategies. Data analysis, reporting, & scale-ability.	511210 - Operating systems software, computer, packaged; 541311 - Computer software analysis and design services, custom; 541512 - Computer software consulting services or consultants; 541611 - Financial management consulting (except investment advice) services; 541612 - Human resource consulting services; 561312 - Executive search consulting services
Nvelup Consulting Inc.	Nvelup Consulting	Bothell	MBE	SOFTWARE CONSULTING SERVICES: Oracle PBCS, Essbase, Hyperion Planning, Hyperion Financial Management, Public Sector Planning, Microsoft Sequel Server (SQL), Power BI, OBIEE/A, Dodeca, Office 365 suite training & configuration, Oracle FDMEE, E-T-L, ODI, Financial Reporting Studio, & Oracle Smart View for Office, PeopleSoft, Microsoft Power BI, Business Intelligence. Operating systems software install, Project Management, system analysis & design services. EMPLOYMENT EXECUTIVE SEARCH SERVICES: Work with client on researching, identifying, screening & interviewing candidates & assisting in final offer. HUMAN RESOURCES & ORGANIZATIONAL DEVELOPMENT: leadership training, custom training, business process improvement & salary administration. FINANCE CONSULTING: Financial close & consolidation, currency translation, planning & forecasting, assist with managing cash flow, implementation of aggressive high growth strategies. Data analysis, reporting, & scale-ability.	511210 - Operating systems software, computer, packaged; 541311 - Computer software analysis and design services, custom; 541512 - Computer software consulting services or consultants; 541611 - Financial management consulting (except investment advice) services; 541612 - Human resource consulting services; 561312 - Executive search consulting services
O'Brien Trucking LLC	O'Brien Trucking LLC	Arlington	DBE	Local dump trucking limited to dirt, gravel, sand, rock, asphalt, and topsoil.	484220 - Dump trucking (e.g., gravel, sand, topsoil)
O'Brien Trucking LLC	O'Brien Trucking LLC	Arlington	WBE	Local dump trucking limited to dirt, gravel, sand, rock, asphalt, and topsoil.	484220 - Dump trucking (e.g., gravel, sand, topsoil)
Oceanside Construction, Inc.	Oceanside Construction, Inc.	Bellingham	DBE	Excavating, earthmoving, demolition, land clearing, and site preparation contractor. Footing & foundation concrete, both form and precast. Road, land drainage, water, sanitary sewer, water system piping, laying pipe, precast catch basin, storm infiltration system, & sewer line construction. Traffic control services: flaggers, cones, barriers, & reflective signs. Erosion control: silt fence, sand bags, & hay. Dump trucking and hauling of gravel, sand, topsoil, and rubble.	237110 - Distribution line, sewer and water, construction; 237210 - Road construction; 237900 - Land drainage contractors; 238110 - Footing and foundation concrete contractors; 238910 - Excavating, earthmoving, or land clearing contractors; 484220 - Dump trucking (e.g., gravel, sand, topsoil); 561310 - Landscaping services (except planning); 561390 - Flagging (i.e., traffic control) services; 562119 - Rubble hauling, local
Oceanside Construction, Inc.	Oceanside Construction, Inc.	Bellingham	MBE	Excavating, earthmoving, demolition, land clearing, and site preparation contractor. Footing & foundation concrete, both form and precast. Road, land drainage, water, sanitary sewer, water system piping, laying pipe, precast catch basin, storm infiltration system, & sewer line construction. Traffic control services: flaggers, cones, barriers, & reflective signs. Erosion control: silt fence, sand bags, & hay. Dump trucking and hauling of gravel, sand, topsoil, and rubble.	237110 - Distribution line, sewer and water, construction; 237210 - Road construction; 237900 - Land drainage contractors; 238110 - Footing and foundation concrete contractors; 238910 - Excavating, earthmoving, or land clearing contractors; 561310 - Landscaping services (except planning); 561390 - Flagging (i.e., traffic control) services
Orntisor, Inc.	Energard Technologies	Bothell	WBE	Company specializes in energy accounting & reporting, collecting & warehousing utilities data. Provides continuous energy reporting services to individual properties and corporate entities.	541690 - Economic consulting services
Orion Insurance Group, Inc.	Orion Insurance Group	Lynnwood	MBE	Insurance brokerage limited to property, casualty, life, and disability.	524210 - Insurance brokerages



## OMWBE DIRECTORY FOR ISLAND, SKAGIT, WHATCOM AND SNOHOMISH COUNTIES

Company Name	DBA Name	City	Certification Type	Capability	Commodity Codes
Meece Construction LLC	Meece Construction	Tulalip	MBE	Residential, commercial, remodel, and new construction services including: general contracting, demolition services, excavating, cold planning, patch paving, saw cutting, site work, site preparation and clean-up, digging and laying water main pipes, sewer pipe installation, asphalt work and drain field installation, trench digging, and trench backfilling. Also includes: concrete, masonry, and grading, construction of retaining walls, topsoil, grass seeding, silt fencing, ponds, and wetland restoration.	237110 - Road construction; 238910 - Excavation contractors; 238990 - Asphaltting, residential and commercial driveway and parking area
Meeds Environmental LLC	Meeds Environmental LLC	Snohomish	DBE	Lease, rent and operate onsite water purification and filtration system and portable concrete washout tubs.	221310 - Water filtration plant operation; 238910 - Construction equipment (except crane) rental with operator
Meeds Environmental LLC	Meeds Environmental LLC	Snohomish	MBE	Lease, rent and operate onsite water purification and filtration system and portable concrete washout tubs.	221310 - Water filtration plant operation; 238910 - Construction equipment (except crane) rental with operator
MEXO CONSTRUCTION INC	Mexo Construction Inc	SNOHOMISH	DBE	EXCAVATION, TRUCKING, PIPELINE CONDUIT CONSTRUCTION, CLEANING & GRUBBING, CONCRETE PUMPING, EROSION CONTROL	237990 - Earth retention system construction; 238110 - Concrete pumping (i.e., placement); 238210 - Excavating, earthmoving, or land clearing contractors
MEXO CONSTRUCTION INC	Mexo Construction Inc	SNOHOMISH	MBE	EXCAVATION, TRUCKING, PIPELINE CONDUIT CONSTRUCTION, CLEANING & GRUBBING, CONCRETE PUMPING, EROSION CONTROL	237990 - Earth retention system construction; 238110 - Concrete pumping (i.e., placement); 238210 - Excavating, earthmoving, or land clearing contractors
Mert Engineering, Inc.	Mert Engineering, Inc.	Bellingham	DBE	Consulting engineer, geotechnical, geological, soils, environmental hydrogeology, soil testing, retaining wall, deep foundation.	541330 - Engineering services; 541620 - Environmental consulting services
Mert Engineering, Inc.	Mert Engineering, Inc.	Bellingham	MBE	Consulting engineer, geotechnical, geological, soils, environmental hydrogeology, soil testing, retaining wall, deep foundation.	541330 - Engineering services; 541620 - Environmental consulting services
MG Quest	MG Quest	Lynnwood	WBE	Products for research in biomedical sciences.	423490 - Scientific laboratory equipment; merchant wholesalers; 541711 - DNA technologies (e.g., microarrays) research and experimental development laboratories
Modern Siding LLC		Everett	WBE	Provides vinyl, wood, & aluminum siding installation services.	238270 - Vinyl siding, soffit and fascia installation
Mulberry Tree Marketing	Mulberry Tree Marketing	Bothell	WBE	Provides marketing services to promote products via custom design, embroidery services, graphic layout services, and personal customer service.	541813 - Marketing consulting services; 541890 - Advertising specialty (e.g., keychain, magnet, pen) distribution services
My Biz Pro LLC	My Biz Pro	Asanores	MWBE	Firm provides web design, digital media marketing consulting, social media, search engine optimization and Spanish translation services.	544311 - WEB (i.e., internet) page design services; custom; 541613 - Marketing consulting services; 541930 - Translation services, language
My Biz Pro LLC	Biz Pro Co.	Asanores	DBE	Firm provides web design, digital media marketing consulting, social media, search engine optimization and Spanish translation services.	544311 - WEB (i.e., internet) page design services; custom; 541613 - Marketing consulting services; 541930 - Translation services, language
MySource LLC	MySource Consulting	Edmonds	WBE	Connect employers and top talent in the IT marketplace. Conducts recruitment and screening methods to attract, recruit, and retain top talent capable of delivering high-value projects on time and under budget.	561311 - Placement agencies or services, employment
New Grace Investment Inc.	New Grace Investment Inc	Lynnwood	MWBE	Leases a commercial building.	531210 - Commercial building rental or leasing
Nikki H. Chin Lowe, DDS PLLC	Mill Creek Dental	Mill Creek	MWBE	Dental surgeon's office providing dentistry and oral healthcare to individuals. Services include: preventive care, sealants, emergency dental care, fillings, crowns, on-lays and inlays, CAD / CAM Technology (E 40), implants, cosmetics, night guards, veneers, bridge work in gold and ceramic, simple extractions and teeth whitening. Provides prophylaxis, scaling and root planning, periodontal maintenance and laser therapy.	802110 - Dental surgeon's offices (e.g., centers, clinics)
North Shore Maintenance Inc	North Shore Maintenance Inc	Burlington	WBE	Sandblasting and painting company specializing in sandblasting metals & coating metal frames, dumpsters, boats and cars.	332812 - Painting metals and metal products for the trade; 332813 - Sandblasting metals and metal products for the trade
North Sound Industries	North Sound Interiors	Woodinville	WBE	Interior decorating consulting services. Office furniture rentals, installation, and storage.	238930 - Office furniture, modular system, installation; 442110 - Furniture stores (e.g., household, office, outdoor); 493190 - Private warehousing and storage (except farm products, general merchandise, refrigerated); 541410 - Interior decorating consultant services; 541420 - Furniture design services
Northsound Utility and Construction Inc.	Northsound Utility and Construction Inc.	Starwood	WBE	Underground utility installation, horizontal auger boring (jack and bore), steel pipe jacking, trenching, demolition and site work.	337210 - Utility line (i.e., sewer, water), construction; 237210 - Land subdividing and utility installation (e.g., electric, sewer and water); 237990 - Drainage project construction; 238910 - Boring, for building construction

Page 15

**OMWBE DIRECTORY FOR ISLAND, SKAGIT, WHATCOM AND SNOHOMISH COUNTIES**

Company Name	DBA Name	City	Certification Type	Capability	Commodity Codes
Marzbank Construction, Inc.	Marzbank Construction, Inc.	Lake Stevens	DBE	Grading & placement of crushed surfacing based & top course for highway/road/street/bridges or airport runway. Asphalt & concrete patching. Construction of: storm water/water main/utility lines/sewer, hydrants, catch basins, bioswale, pipes, detention vaults & retention ponds. Manhole adjustment to grade, underground electrical & comms & conduits. Earth retention systems, riprap & anchored retaining wall. Channel, cribbing, trail, embankment, & gabion construction. Dump truck hauling of contaminated non-hazardous material, gravel & top soil. Vectoring truck.	237110 - Sewer main, pipe and connection, construction; 237310 - Highway construction; 237990 - Earth retention system construction; 484220 - Dump trucking (e.g., gravel, sand, top-soil)
Marzbank Construction, Inc.	Marzbank Construction, Inc.	LAKE STEVENS	MBE	Grading & placement of crushed surfacing based & top course for highway/road/street/bridges or airport runway. Asphalt & concrete patching. Construction of: storm water/water main/utility lines/sewer, hydrants, catch basins, bioswale, pipes, detention vaults & retention ponds. Manhole adjustment to grade, underground electrical & comms & conduits. Earth retention systems, riprap & anchored retaining wall. Channel, cribbing, trail, embankment, & gabion construction. Dump truck hauling of contaminated non-hazardous material, gravel & top soil. Vectoring truck.	237110 - Sewer main, pipe and connection, construction; 237310 - Highway construction; 237990 - Earth retention system construction; 484220 - Dump trucking (e.g., gravel, sand, top-soil)
Martha Lake Dental Center Marzville State LLC Matia Contractors, Inc.	Martha Lake Dental Center Marzville State LLC Matia Contractors, Inc.	Lynnwood Burienville Ferdale	MBE DBE	Licensed dental practice providing dental care to children and adults. Commercial & residential landscaping services: Erosion & sediment control, install rock & stream bed material to prevent further erosion, hand seeding, mulching & silt fence. Drains for drainage, restore new pathway & soil/gravel/rock installation. Plantings and reinforced grass shoulder areas. Earth retention systems: geotextile for soil stabilization & ecology blocks. Sewer and water utility line construction.	522110 - DDCs (doctors of dental surgery) offices (e.g., centers, clinics) 533310 - Commercial property management 237110 - Utility line (i.e., sewer, water), construction; 237990 - Earth retention system construction; 567730 - Landscaping services (except planning)
Matia Contractors, Inc.	Matia Contractors, Inc.	Ferdale	WBE	Commercial & residential landscaping services: Erosion & sediment control, install rock & stream bed material to prevent further erosion, hand seeding, mulching & silt fence. Drains for drainage, restore new pathway & soil/gravel/rock installation. Plantings and reinforced grass shoulder areas. Earth retention systems: geotextile for soil stabilization & ecology blocks. Sewer and water utility line construction.	237110 - Utility line (i.e., sewer, water), construction; 237990 - Earth retention system construction; 567730 - Landscaping services (except planning)
Mayfield's Hoisting Service, Inc.	Mayfield's Hoisting Service, Inc.	Lynnwood	DBE	Licensed general contractor providing full service tower crane, hydraulic crane, man lift, material lift, material lifting packages with skilled labor. Full service packages include pre job arrangement and scheduling for delivery of crane, supervision of setup, maintenance and tear down, skilled labor, damage & liability insurance, new rigging supplies, radios, required lighting. Crane operations: capable of placement of precast concrete, steel for buildings, decking and bridges, lifting concrete buckets, and moving of tools and supplies. Providing skilled labor for crane operator, phone man, fork lift, material lift, material lift. Truck mounted vacuum sweeping with water application to control dust and debris on highways, roads, bridges, tunnels, parking lots, staging areas.	238990 - Crane rental with operator; 488400 - Street cleaning services; 561320 - Labor (except farm) contractors (i.e., personnel supplier); 561790 - Parking lot cleaning (e.g., power sweeping, washing) services
Mayfield's Hoisting Service, Inc.	Mayfield's Hoisting Service, Inc.	Lynnwood	MBE	Licensed general contractor providing full service tower crane, hydraulic crane, man lift, material lift, material lifting packages with skilled labor. Full service packages include pre job arrangement and scheduling for delivery of crane, supervision of setup, maintenance and tear down, skilled labor, damage & liability insurance, new rigging supplies, radios, required lighting. Crane operations: capable of placement of precast concrete, steel for buildings, decking and bridges, lifting concrete buckets, and moving of tools and supplies. Providing skilled labor for crane operator, phone man, fork lift, material lift, material lift. Truck mounted vacuum sweeping with water application to control dust and debris on highways, roads, bridges, tunnels, parking lots, staging areas.	238990 - Crane rental with operator; 488400 - Street cleaning services; 561320 - Labor (except farm) contractors (i.e., personnel supplier); 561790 - Parking lot cleaning (e.g., power sweeping, washing) services
Mease Construction LLC	Mease Construction	Tulalip	DBE	Residential, commercial, rem old, and new construction services including: general contracting, demolition services, excavating, cold planning, patch paving, saw cutting, site work, site preparation and clean-up, digging and laying water main pipes, sewer pipe installation, septic tank and drain field installation, trench digging, and back-filling. Landscaping services include: land clearing and grubbing, construction of retaining walls, topsoil, grass seeding, silt fencing, ponds, and wetland restoration.	237310 - Road construction; 238910 - Excavation contractors; 238990 - Asphalting, residential and commercial driveway and parking area

Page 14

Company Name	DBA Name	City	Certification Type	Capability	Commodity Codes
LJR Painting LLC	LJR Painting LLC	Tulalip	WBE	Commercial, residential, interior, and exterior painting; power washing; caulking of expansion joints; water repellents; staining and minor drywall repairs.	230320 - Painting (except roof) contractors
UNT/Definitive Building Maintenance Inc	UNT/Definitive Building Maintenance Inc.	Mountlake Terrace	DBE	Provider of janitorial, day porter, commercial cleaning, construction cleaning, window washing, and floor and carpet cleaning services.	238930 - Cleaning building interiors during and immediately after construction; 561720 - Building cleaning services, janitorial; 561740 - Cleaning services, carpet and rug; 561790 - Cleaning building exteriors (except sandblasting, window cleaning)
UNT/Definitive Building Maintenance Inc	UNT/Definitive Building Maintenance Inc.	Mountlake Terrace	MBE	Provider of janitorial, day porter, commercial cleaning, construction cleaning, window washing, and floor and carpet cleaning services.	238930 - Cleaning building interiors during and immediately after construction; 561720 - Building cleaning services, janitorial; 561740 - Cleaning services, carpet and rug; 561790 - Cleaning building exteriors (except sandblasting, window cleaning)
LOIS LEE DDS PLLC	MEADOWDALE DENTAL CLINIC	Lynnwood	MWBE	A family Dental Practice offering General Dentistry. Providing: routine dental cleaning and check-ups; patient education; periodontal cleaning and maintenance; routine dental care for children; restorative care (fillings); emergency services; root canal therapy; extractions; implant restorations and complete and partial dentures.	621210 - Dentists' offices (e.g., centers, clinics)
Looker Industries Inc.		Groton Falls	WBE	Dump trucking, solo, truck & trailer, side dump. Importing and exporting all types of dirt and rock for commercial and residential jobs. Lowboy service.	484220 - Dump trucking (e.g., gravel, sand, top-soil)
Lopez Valley Nursery and Landscaping	Lopez Valley Nursery and Landscaping	Sedro-Woolley	DBE	Nursery with tree production, growing of flowers, roses & shrubbery for sale. Landscaping services for commercial and residential including installing trees, shrubs, plants, lawns and gardens. Lawn and garden sprinkler system installation.	238220 - Lawn sprinkler system installation; 444220 - Nurseries, retail, stock primarily grown off premises; 561790 - Landscaping services (except planning)
Lopez Valley Nursery and Landscaping	Lopez Valley Nursery and Landscaping	Sedro-Woolley	MBE	Nursery with tree production, growing of flowers, roses & shrubbery for sale. Landscaping services for commercial and residential including installing trees, shrubs, plants, lawns and gardens. Lawn and garden sprinkler system installation.	238220 - Lawn sprinkler system installation; 444220 - Nurseries, retail, stock primarily grown off premises; 561790 - Landscaping services (except planning)
Lorraine Brown Read	Lorraine Brown Read	Snohomish	WBE	Environmental statistician, consulting on statistical matters related to the collection and analysis of environmental data. Services include: study/survey, and sampling design; evaluations of chemical, toxicological, and biological data; statistical modeling, advising and implementing the analytical framework for meeting study and regulatory objectives.	546200 - Environmental consulting services
Lucie R Bernheim, Attorney at Law	Lucie R Bernheim, Attorney at Law	Edmonds	WBE	Retail and commercial collection and litigation, credit industry defense (FCPA, FCPA, Washington agency & debt collector licensing & administrative representation, regulatory advice to credit & collectors, criminal defense, and family & business immigration advice.	541110 - Lawyers' offices
Madling & Jones LLC	Strategic Emergency Education	Mount Vernon	WBE	Strategic Emergency Education (SEE) specializes in Disaster and Emergency Services to include Response & Recovery Guidelines; Policies and Procedures; Plan Writing & Development, Plan Maintenance, Grant Writing, Grant Management, N911 Addressing Emergency Operations Center Development & Assistance, Staff Training (active shooter, situational awareness, disaster preparedness, etc.) Tabletop, Drills, Exercises and Games. SEE also specializes in medical training to include CPR, first aid and life-threatening bleed control training.	616599 - All Other Miscellaneous Schools and Instruction; 611699 - First-aid instruction
Management Services Northwest, Inc.	Management Services Northwest, Inc.	Blaine	WBE	Janitorial and building maintenance specializing in commercial, industrial, and medical cleaning. Ornamental lawn and turf maintenance. Mowing, pruning, tree removal, raking.	561720 - Janitorial services; 561730 - Lawn maintenance services
Management Systems & Services, Inc.	MSS, Inc.	La Conner	MWBE	Energy efficient conservation design services for residential, commercial & industrial sectors. Lighting, daylight, & skylight, solar analysis & re-design. Sustainable design to reduce carbon footprint. Energy audits and modeling. LEED and eQuest technical assistance.	541611 - Business management consulting services; 541690 - Energy consulting services
MANGO Math Group LLC	MANGO Math	Snohomish	WBE	Supplemental educational pre-packaged math based curriculum provider for kindergarten through 8th grade. Professional development consulting and math training services for educators.	424930 - Textbooks in merchant wholesalers; 511430 - Professional development training; 511710 - Educational curriculum development services
Marijys Bourm CPA PS	Marijys Bourm CPA PS	Bellingham	WBE	Public accounting and sale & support of accounting software.	443142 - Software stores, computer; 2211 - Certified public accountants' (CPA's) offices

## OMWBE DIRECTORY FOR ISLAND, SKAGIT, WHATCOM AND SNOHOMISH COUNTIES

Company Name	DBA Name	City	Certification Type	Capability	Commodity Codes
Ketchy	Ketchy	Mukilteo	WBE	Providing services related to graphic design, marketing, logo design, letterhead, business cards, flyers, mailers, brochures, proposals, illustration, book covers, posters, trademark design, clothing graphics, package design, production art, product photography, and photo editing.	541430 - Graphic design services; 541613 - Marketing consulting services; 541922 - Photography services, commercial
KIM & KIM CPAS INC	KIM & KIM CPAS INC	Edmonds	MBE	Offices of Certified Public Accountants providing accounting and tax preparation services.	541211 - Certified public accountants' (CPAs) offices
Kone Consulting, LLC	Kone Consulting, LLC	Edmonds	WBE	Professional consulting services specializing in government transaction including program evaluation, lean systems improvement, strategic planning, organizational development & training, research, and evaluation. Technical assistance, quantitative assessments and software development.	541611 - Strategic planning consulting services; 541612 - Organization development consulting services
L & M Sheet Metal Fabricators Inc.	L & M Sheet Metal Fabricators Inc.	Lynnwood	WBE	Manufacturer of heating and ventilating ducts and fittings for commercial buildings.	332322 - Sheet metal work (except stamping) manufacturing
LM Sundholm Inc. PS	Silver Lake Eye Care Center	EVERETT	WBE	General Optometry practice providing eye wear and eye care services.	621220 - Optometrists' offices (e.g., centers, clinics)
LM SUNDHOLM PROPERTIES LLC	LM SUNDHOLM PROPERTIES LLC	EVERETT	WBE	Commercial real estate leasing.	531120 - Lessors of nonresidential buildings (except miniwarehouses)
Lamba Properties, LLC	Lamba Properties, LLC	Mukilteo	MBE	Commercial building rental or leasing.	531120 - Commercial building rental or leasing
Land Development Engineering & Surveying, Inc.	Land Development Engineering & Surveying, Inc.	Ferndale	DBE	Licensed professional civil engineering, land surveying, and planning services including topography base mapping and boundaries. Projects completed for residential, governmental, municipal, industrial, educational, highways, private development, tribal land, & commercial. Project and construction management. Develop construction documents, plans, specifications, and estimates. Work with regulatory agencies on critical area studies and technical drainage reports per standards.	237310 - Construction management, highway, road, street and bridge; 541330 - Civil engineering services; 541370 - Surveying and mapping services (except geophysical)
Land Development Engineering & Surveying, Inc.	Land Development Engineering & Surveying, Inc.	Ferndale	MBE	Licensed professional civil engineering, land surveying, and planning services including topography base mapping and boundaries. Projects completed for residential, governmental, municipal, industrial, educational, highways, private development, tribal land, & commercial. Project and construction management. Develop construction documents, plans, specifications, and estimates. Work with regulatory agencies on critical area studies and technical drainage reports per standards.	237310 - Construction management, highway, road, street and bridge; 541330 - Civil engineering services; 541370 - Surveying and mapping services (except geophysical)
Lands Ventures, Inc.	FASTSIGNS of Lynnwood	Lynnwood	WBE	Manufacture and installation of signs and graphics solutions. Graphics design and video advertising. Safety, way finding and sales signage and marketing materials.	332950 - Signs and signboards (except paper, paperboard) manufacturing; 541420 - Graphic design services
Lara Lambert	Northwestern Fuels & Landscaping Supplies	Mukilteo	WBE	Manufacturer of Super Cedar Firestarters. Retail sales of solid fuels (pinto logs, wood pellets). Landscaping supplies and gravel delivery.	331999 - Firewood and fuel wood containing fuel binder manufacturing
Larwin Young DDS PLLC	Mill Creek Endodontics & Microsurgery	MILL CREEK	MBE	Endodontics and microsurgery, dentistry	621210 - Endodontists' offices (e.g., centers, clinics)
LIFT Solutions, Inc.	LIFT Solutions Inc.	Lake Stevens	DBE	Comprehensive elevator & escalator electrical parts wholesalers & consulting services. Direct elevator parts & product buyer direct from the manufacturers. Order parts for service and/or repair for new construction, modernization, and estimate/order/shipping of elevator components. A unique order management system from purchase to delivery that tracks all transactions to increase the customer's productivity, profitability, and efficiency. Elevator marketing services for contractors.	423610 - Electric motors, wiring, supplies, and lighting fixtures merchant wholesalers; 423830 - Elevators merchant wholesalers; 541613 - Marketing consulting services
LIFT Solutions, Inc.	LIFT Solutions Inc.	Lake Stevens	MBE	Comprehensive elevator & escalator electrical parts wholesalers & consulting services. Direct elevator parts & product buyer direct from the manufacturers. Order parts for service and/or repair for new construction, modernization, and estimate/order/shipping of elevator components. A unique order management system from purchase to delivery that tracks all transactions to increase the customer's productivity, profitability, and efficiency. Elevator marketing services for contractors.	423610 - Electric motors, wiring, supplies, and lighting fixtures merchant wholesalers; 423830 - Elevators merchant wholesalers; 541613 - Marketing consulting services
Lipiten Upl	Living Life Wellness Centers	Mukilteo	WBE	Provides training and is a speaker on health, business, and women's issues.	711510 - Speakers, independent
Lisa A. Harbert, PE, PLLC	Harbert Engineers	Lynnwood	DBE	Civil engineering firm specializing in storm water, bridge hydraulics, scour analysis, and erosion control.	541330 - Civil engineering services
Lisa A. Harbert, PE, PLLC	Harbert Engineers	Lynnwood	MBE	Civil engineering firm specializing in storm water, bridge hydraulics, scour analysis, and erosion control.	541330 - Civil engineering services
Lipiten Audiology Services Inc.	Lipiten	Snohomish	WBE	Mobile hearing testing services and educational training to keep noisy companies in compliance with WAC 296-417.	621340 - Hearing testing services by offices of audiologists
Lu Chiropractic Inc.	Lu Chiropractic	Lynnwood	MBE	Provide chiropractic treatment to patients.	621310 - Chiropractors' offices (e.g., centers, clinics)

Page 12



## OMWBE DIRECTORY FOR ISLAND, SKAGIT, WHATCOM AND SNOHOMISH COUNTIES

Company Name	DBA Name	City	Certification Type	Capability	Commodity Codes
J.B. Irving Consulting	J.B. Irving Consulting	Everett	MBE	Forecast and/or prepare construction cost estimates for different types of facilities.	541310 - Architectural (except landscape) consultants' offices; 541330 - Engineering consulting services
JAG Corporation	JAG Corporation	Tulalip	DBE	Site preparation, excavating, underground utilities, water and sewer installation, pipelines, general contracting, and landscaping.	237110 - Utility line (i.e., sewer, water), construction; 237110 - Highway, Street, and Bridge Construction; 237390 - Construction management, design; 238510 - Grading construction sites; 561730 - Landscape installation services; 561990 - Paving (i.e., traffic control) services
JAG Corporation	JAG Corporation	Tulalip	MBE	Site preparation, excavating, underground utilities, water and sewer installation, pipelines, general contracting, and landscaping.	237110 - Utility line (i.e., sewer, water), construction; 238510 - Grading construction sites; 561730 - Landscape installation services
Jenice R. Henderson	T.B. Upholstery & Drapery Shop	Everett	MWBE	Provide furniture repair and replacement services (frames, springs, slip covers, etc.); reupholster, cleaning (via surface area 1000) material sales, and custom made draperies, fabric coating mills.	314210 - Reparatire made from purchased fabric or sheet goods; 483310 - Antiques shops; 561740 - Furniture cleaning services; 811420 - Restoration and repair of antique furniture
Jennifer Y. Luna DDS PLLC	Mountlake Family Dentistry	Mountlake Terrace	MWBE	General and cosmetic dentistry.	821210 - Dentists' offices (e.g., centers, clinics)
Jesse Desbordes Williams	Classic Chims Service	Everett	MBE	Investigate claims for insurance companies.	530291 - Insurance claims investigation services
JET PAINTING AND SPECIALTY FINISHES	JET PAINTING AND SPECIALTY FINISHES	Seaham	MBE	PAINTING INTERIORS, EXTERIORS, WALLCOVERS.	238320 - Painting (except roof) contractors
Jewell Solutions, LLC	Mount Vernon	Mount Vernon	WBE	Project Management, Human Resources Consulting, Virtual Assistance work, training.	541611 - Administrative Management and General Management Consulting Services; 541612 - Human Resources Consulting Services; 561110 - Office Administrative Services
JW GROUP LLC	JW Group LLC	Mulino	MBE	Commercial real estate building rental or leasing.	531120 - Commercial building rental or leasing
JWT PROFESSIONAL PROPERTIES LLC	JWT PROFESSIONAL PROPERTIES LLC	Mulino	MWBE	Lessors of nonresidential buildings (except mini-warehouses).	531120 - Lessors of nonresidential buildings (except mini-warehouses)
Jorge Mancera	Skagit Mediation	Mount Vernon	MBE	Mediation services to include workshops, coaching and mediation. Helping individuals to deescalate interpersonal conflict and reach a consensual written agreement.	541390 - Arbitration and conciliation service (except by attorney, paralegal)
JPC Investments Inc	JPC Investments Inc	Everett	MWBE	Commercial building rental or leasing.	531120 - Commercial building rental or leasing
JSL REAL ESTATE LLC	JSL REAL ESTATE LLC	BELLEVUE	MWBE	Real estate firm. Listing, selling, and leasing residential and commercial properties.	531210 - Brokerage, real estate
JST LLC	Crescendo firm	Bellingham	MBE	Providers lodging services.	721110 - Motels
K&N PROPERTY LLC	K&N PROPERTY LLC	Mukilteo	MBE	Lessors of residential and nonresidential buildings.	531110 - Lessors of residential buildings and dwellings; 531120 - Lessors of nonresidential buildings (except mini-warehouses)
KAREN L CANTILLON	EMERALD CITY EDITING	LYNNWOOD	DBE	Full service technical writing and editing of marketing proposals, reports, newsletters, brochures, white papers, and preparing 25%, 35%, and King County proposals for environmental and civil engineering firms.	541820 - Public relations services; 561410 - Editing services; 711310 - Technical writers, independent
KAREN L CANTILLON	EMERALD CITY EDITING	LYNNWOOD	WBE	Full service technical writing and editing of marketing proposals, reports, newsletters, brochures, white papers, and preparing 25%, 35%, and King County proposals for environmental and civil engineering firms.	541820 - Public relations services; 561410 - Editing services; 711310 - Technical writers, independent
Kathon Services LLC		ARLINGTON	DBE	Electrical vendor of switch gear, lights, and commodities used in major construction projects. We review shop drawings, organize submittals and coordinate shipping of materials. We are available for participation in start-up/commissioning of the construction project.	423610 - Construction materials, electrical, merchant wholesalers
Kathon Services LLC		ARLINGTON	WBE	Electrical vendor of switch gear, lights, and commodities used in major construction projects. We review shop drawings, organize submittals and coordinate shipping of materials. We are available for participation in start-up/commissioning of the construction project.	423610 - Construction materials, electrical, merchant wholesalers
Kathryn L Jagow DDS PLLC	Jagow Family Dentistry	Mountlake Terrace	WBE	General family dentistry.	821210 - Dentists' offices (e.g., centers, clinics)
KCS Services Group, LLC	KCS Services Group, LLC	Concrete	WBE	Provides consulting services relating to risk management, and insurance advice.	534290 - Insurance advisory services
KenjiMato Consulting		Bothell	DBE	Provides general management consulting services that include involving, progress reporting, project controls, notice to proceed calculations, level of effort calculations, amendments and closeouts, resource loading, project management, and data management.	541611 - Administrative Management and General Management Consulting Services; 541610 - Other Management Consulting Services
KenjiMato Consulting	KenjiMato Consulting	Bothell	MBE	Provides general management consulting services that include involving, progress reporting, project controls, notice to proceed calculations, level of effort calculations, amendments and closeouts, resource loading, project management, and data management.	541611 - Administrative Management and General Management Consulting Services; 541610 - Other Management Consulting Services

**OMWBE DIRECTORY FOR ISLAND, SKAGIT, WHATCOM AND SNOHOMISH COUNTIES**

Company Name	DBA Name	City	Certification Type	Capability	Commodity Codes
Highline Pavement Maintenance, Inc.	Highline Pavement Maintenance, Inc.	Mount Vernon	MBE	Asphalt paving contractor; patching, sealcoating, resurfacing, repair, and maintenance on highway, road, street, driveways, & parking lots. Road & parking lot striping, marking & line painting. Dump trucking and hauling services: soil, gravel, sand. Snow removal & clearing.	23710 - Parking lot marking and line painting; 23890 - Parking lot paving and sealing; 56170 - Parking lot cleaning (e.g., power sweeping, washing) services
Hina Nursery Inc.	Hina Nursery	Everett	MBE	A nursery and garden center that is open to the public specializing in native plants, flowers, trees and bushes; making the propagation of plants from seeds and cuttings and selling them to the public at a large and wholesale to businesses.	11421 - Nursery with tree production (except for reforestation); 44220 - Nursery and garden centers without tree production
Himalayan Shades	Himalayan Shades	Bothell	MBE	Import and resale of spices and tea products.	44230 - Coffee and tea (i.e., packaged) stores
Himanshu Grover, LLC	Himanshu Grover	LYNNWOOD	DBE	Urban planning consulting services including: research, community engagement, hazard mitigation planning, community resilience, land use planning, mapping and sustainable development.	541370 - Urban planning services; 541370 - Mapping (except geophysical) services; 541614 - Operations research consulting services
Hirsch Consulting Services (HCS) LLC	Hirsch Consulting Services (HCS)	Bothell	WBE	Environmental services specializing in water quality.	541620 - Environmental consulting services
HJM Corporation	HJM Corporation	Seattle	WBE	Commercial building rental company.	541120 - Commercial building rental or leasing
HNP Architects, PLLC	HNP Architects	Mount Vernon	WBE	Architecture, full service design and construction administration. Energy efficient and sustainable design to reduce ecological footprint. Certified Passive House Consultant (CPHC) and LEED certified.	541310 - Architectural (except landscape) design services
HOLLAND FAMILY PROPERTIES LLC	Holland Family Properties LLC	Mukilteo	WBE	RENT PROPERTY TO HARBOR POINT MONTROSS SCHOOL, MONTESSORI EDUCATION, PRIVATE SCHOOL PRESCHOOL KINDERGARTEN, CHILDRENS EDUCATION.	531120 - Lessors of nonresidential buildings (except miniwarehouses)
Howard Jue, DDS PLLC	Jue Orthodontics	Edmonds	MBE	Providing orthodontics and dental services to patients of all ages specializing in correcting dental malocclusions, improving esthetics, increasing dental health through the application of orthodontic treatment.	621210 - Dentists' offices (e.g., centers, clinics); 621210 - Orthodontists' offices (e.g., centers, clinics)
HWA Geosciences Inc.	HWA Geosciences, Inc.	Bothell	DBE	Provides a full range of geotechnical and geoscience (soil, foundation, rock, groundwater) solutions to public agencies, engineering, and architect firms. Services include design, construction, quality review of building structures, parks, solid waste, transportation, waterfront, water, wastewater, and storm water facilities. Firm does materials testing with state of the art laboratory equipment and has a (of only 2 in the State, WSDOT has a FWD) Falling Weight Deflectometer (FWD) used for pavement property testing.	541330 - Civil engineering services; 541350 - Building inspection services; 541380 - Laboratory testing (except medical, veterinary) services; 541620 - Sanitation consulting services; 541690 - Safety consulting services
HWA Geosciences Inc.	HWA Geosciences, Inc.	Bothell	MWBE	Provides a full range of geotechnical and geoscience (soil, foundation, rock, groundwater) solutions to public agencies, engineering, and architect firms. Services include design, construction, quality review of building structures, parks, solid waste, transportation, waterfront, water, wastewater, and storm water facilities. Firm does materials testing with state of the art laboratory equipment and has a (of only 2 in the State, WSDOT has a FWD) Falling Weight Deflectometer (FWD) used for pavement property testing.	541330 - Civil engineering services; 541350 - Building inspection services; 541380 - Laboratory testing (except medical, veterinary) services; 541620 - Sanitation consulting services; 541690 - Safety consulting services
Impact Physical Therapy PS	Impact Physical Therapy	Lynnwood	WBE	Outpatient physical therapy clinic. Services include: manual physical therapy, massage therapy, pre & post surgical rehabilitation, sports medicine, vestibular rehabilitation, amputee program and work conditioning.	621340 - Physical therapists' offices (e.g., centers, clinics)
Industry Erectors, Inc.	Industry Erectors, Inc.	Snohomish	DBE	A general contractor specializing in structural steel erection, miscellaneous metal, metal installation, heavy rigging, ornamental welding, on-site production welding and iron works.	238120 - Structural steel erecting or iron work contractors; 238120 - Welding, on-site, contractors
Industry Erectors, Inc.	Industry Erectors, Inc.	Lake Stevens	MBE	A general contractor specializing in structural steel erection, miscellaneous metal, metal installation, heavy rigging, ornamental welding, on-site production welding and iron works.	238120 - Structural steel erecting or iron work contractors; 238120 - Welding, on-site, contractors
Insight Design Studio	Insight Healthcare Architecture LLC	Boier	WBE	Provides architectural services for hospitals and medical facilities.	541310 - Building architectural design services
Integrated System's Design Group, LLC	Integrated Systems Design Group	Bothell	MBE	Manufacturers of mobile and expandable containers, shelters, and decontamination trailers for hazmat, abatement, and decontamination purposes.	330214 - Utility trailers manufacturing
Iova Corcoran Insurance Agency Inc.	Iova Corcoran Insurance Agency Inc.	Lake Stevens	WBE	Provides commercial property insurance, casualty insurance, and employee benefits for businesses.	524210 - Insurance agencies
Island Brokers Realty LLC	Island Brokers Realty LLC	Oak Harbor	WBE	Real Estate brokerage services limited to the purchase, sale, and property management of single-family, multi-family residences, apartments, condominiums, and commercial buildings/offices.	531210 - Brokerages; real estate; 531311 - Real estate property managers' offices; residential; 531312 - Real estate property managers' offices; commercial

Page 10

## OMWBE DIRECTORY FOR ISLAND, SKAGIT, WHATCOM AND SNOHOMISH COUNTIES

Company Name	DBA Name	City	Certification Type	Capability	Commodity Codes
Gone Diving LLC	Gone Diving LLC	Bellingham	WBE	Provides instruction on diving and certifies divers. Vendor of diving equipment.	451110 - Diving equipment stores; 611620 - Scuba instruction, camps, or schools
Grass Adult Family Home	Grass Adult Family Home	Ferrisville	DBE	Adult Family Home	623312 - Assisted living facilities without on-site nursing care facilities
Grant Options, LLC		Sedro Woolley	DBE	Provides high-quality research and evaluation, training and technical assistance, communications, meeting and event planning, and grant support.	611430 - Professional and Management Development Training; 611710 - Educational curriculum development services; 711510 - Technical writers, independent; 813215 - Other Grantmaking and Giving Services
Grant Options, LLC		Sedro Woolley	DBE	Provides high-quality research and evaluation, training and technical assistance, communications, meeting and event planning, and grant support.	611430 - Professional and Management Development Training; 611710 - Educational curriculum development services; 711510 - Technical writers, independent; 813215 - Other Grantmaking and Giving Services
Green Cat Dine Inc	Green Cat Dine	Multiteo	WBE	Graphic design firm. Services include: brochures, promotional and direct mail, branding, announcements, invitations, websites, itineraries, environmental graphics, promotions, interior design, and logos.	541410 - Graphic design services; 543111 - WEB (i.e., Internet) page design services; custom
Green Planet Supply Inc	Green Planet Supply, Inc.	Snohomish	DBE	Residential and commercial wholesale of HVAC, geothermal, swimming pool heat pumps, aquaculture and agricultural industry heat pumps, heat exchangers and related equipment, parts and supplies. Sales of eco-friendly environmental products for heating, cooling, and other air water transfer applications.	423730 - Warm air heating equipment merchant wholesalers
Guylane Construction Company Inc.	Guylane Construction Company Inc.	Burlington	DBE	Fencing contractor. High visibility boundary fencing. Install permanent highway signs Class A (non-electrical) and Class B temporary construction signage (non-electrical). Installation of glare screens, bollards, barricades, mile and guide posts, and mailbox supports.	237310 - Sign erection, highway, road, street, or bridge; 238990 - Fencing contractors (except electronic containment fencing for pets)
Guylane Construction Company Inc.	Guylane Construction Company Inc.	Burlington	DBE	Fencing contractor. High visibility boundary fencing. Install permanent highway signs Class A (non-electrical) and Class B temporary construction signage (non-electrical). Installation of glare screens, bollards, barricades, mile and guide posts, and mailbox supports.	237310 - Sign erection, highway, road, street, or bridge; 238990 - Fencing contractors (except electronic containment fencing for pets)
Guman Trucking, Inc.	J & J Guman Trucking, Inc.	Tulalip	DBE	Local dump trucking of aggregates, soil, rock, gravel, & dirt. Excavation, site preparation, land clearing, and grading. Digging culverts and ditches.	237310 - Culverts, highway, road and street, construction; 237990 - Drainage canal and ditch construction; 238910 - Excavating, earthmoving, or land clearing contractors; 484110 - Trucking, general freight, local; 484220 - Dump trucking (e.g., gravel, sand, top-soil)
Guman Trucking, Inc.	J & J Guman Trucking, Inc.	Tulalip	DBE	Local dump trucking of aggregates, soil, rock, gravel, & dirt. Excavation, site preparation, land clearing, and grading. Digging culverts and ditches.	237310 - Culverts, highway, road and street, construction; 237990 - Drainage canal and ditch construction; 238910 - Excavating, earthmoving, or land clearing contractors; 484110 - Trucking, general freight, local; 484220 - Dump trucking (e.g., gravel, sand, top-soil)
Guman's Hauling LLC		Tulalip	DBE	Dump truck hauling dirt, rock, soil and paving materials.	484220 - Dump trucking (e.g., gravel, sand, top-soil)
Guman's Hauling LLC		Tulalip	DBE	Dump truck hauling dirt, rock, soil and paving materials.	484220 - Dump trucking (e.g., gravel, sand, top-soil)
Hale Milligan And Associates LLC	Hale Milligan and Associates LLC	Arlington	DBE	Civil engineering plans, specifications, estimates for roads, storm drainage, water, sewer, pedestrian facilities and stream restoration.	541330 - Civil engineering services
Hale Milligan And Associates LLC	Hale Milligan and Associates LLC	Arlington	DBE	Civil engineering plans, specifications, estimates for roads, storm drainage, water, sewer, pedestrian facilities and stream restoration.	541330 - Civil engineering services
HAND Enterprises, Inc	HAND Enterprises, Inc	Woodville	DBE	Arrangement & delivery of over-the-road freight transportation, earthmoving, land clearing, excavating, backfilling, demolition, grading, sewer and water line installation, landscaping, plants/trees/shrubs installation.	237110 - Utility line (i.e., sewer, water), construction; 238910 - Excavating, earthmoving, or land clearing contractors; 488310 - Freight forwarding; 561790 - Landscape installation services
HAND Enterprises, Inc	HAND Enterprises, Inc	Woodville	DBE	Arrangement & delivery of over-the-road freight transportation, earthmoving, land clearing, excavating, backfilling, demolition, grading, sewer and water line installation, landscaping, plants/trees/shrubs installation.	237110 - Utility line (i.e., sewer, water), construction; 238910 - Excavating, earthmoving, or land clearing contractors; 488310 - Freight forwarding; 561790 - Landscape installation services
Hazooz Engineering PS	Hazooz Engineering PS	Multiteo	DBE	Civil engineering design for site development of individual and multi-acre sites for residential, commercial, institutional and transportation projects. Address stormwater studies and facilities, grading, water, fire flow, sanitary sewer and streets, highways and parking lots.	541330 - Civil engineering services
Hazooz Engineering PS	Hazooz Engineering PS	Multiteo	DBE	Civil engineering design for site development of individual and multi-acre sites for residential, commercial, institutional and transportation projects. Address stormwater studies and facilities, grading, water, fire flow, sanitary sewer and streets, highways and parking lots.	541330 - Civil engineering services
Highline Pavement Maintenance, Inc.	Highline Pavement Maintenance, Inc.	Mount Vernon	DBE	Asphalt paving contractor patching, resurfacing, repair, and maintenance on highways, road, street, driveways, & parking lots. Road & parking lot striping, marking, & line painting. Dump trucking and hauling services: soil, gravel, sand, snow removal & clearing.	237310 - Asphalt paving (i.e., highway, road, street, public sidewalk); 238990 - Asphalting, resurfacing, repair, and maintenance on highways, road, street, driveways, & parking lots; 484220 - Dump trucking (e.g., gravel, sand, top-soil); 561790 - Snow plowing driveways and parking lots (i.e., not combined with any other service)

**OWBE DIRECTORY FOR ISLAND, SKAGIT, WHATCOM AND SNOHOMISH COUNTIES**

Company Name	DBA Name	City	Certification Type	Capability	Commodity Codes
Electric West Inc.	Electric West Inc	Mount Vernon	WBE	Electrical contractor of highway, road, street, and bridge lighting, sign erection, and electrical traffic signal installation. Permanent signage, illumination, and electrical systems.	237310 - Sign erection, highway, road, street, or bridge; 238210 - Electrical contractors
Eliminate Chaos LLC	Eliminate Chaos LLC	Snohomish	WBE	Provides business productivity consulting to organizations including improving productivity of employees, teams & organizations reviewing processes, paper & information management & how spaces are organized. Provides keynotes & seminars on workplace productivity, Microsoft Outlook/business contact manager. Provides residential and SOHO (small office/home office) organizing & rightsizing consulting including organizing homes & providing relocation services.	541611 - Business management consulting services; 541614 - Productivity improvement consulting services; 711510 - Speakers, independent
Elizabeth Holland PhD, LLC	Elizabeth Holland PhD, LLC	Anacortes	WBE	Licensed psychologist specializing in psychological evaluations for children with ADHD, autism spectrum disorders, and other learning disorders.	621330 - Clinical psychologists' offices (e.g., centers, clinics)
Ellestad Trucking	Ellestad Trucking	Mount Vernon	DBE	Dump trucking services. Import and export of materials including all types of dirt, rocks, and grindings. Hauling of hot mix asphalt for paving.	484220 - Dump trucking (e.g., gravel, sand, topsoil)
EMS CONSULTING LLC	EMS CONSULTING LLC	Lynnwood	WBE	Industrial Hygiene Consulting	541620 - Environmental consulting services
ENVIRONMENTAL ABATEMENT SERVICES INC	ENVIRONMENTAL ABATEMENT SERVICES INC	Mount Vernon	DBE	ASBESTOS ABATEMENT AND LEAD ABATEMENT, MOLD REMEDIATION	541620 - Environmental consulting services
ENVIRONMENTAL ABATEMENT SERVICES INC	ENVIRONMENTAL ABATEMENT SERVICES INC	Mount Vernon	MWBE	ASBESTOS ABATEMENT AND LEAD ABATEMENT, MOLD REMEDIATION	541620 - Environmental consulting services
Equinox Research and Consulting International, Inc.		Mount Vernon	DBE	A full-service cultural resource management firm. Providing historic and cultural preservation research and development services specializing in completing cultural resource inventories with experience in identifying the widest array of historic and prehistoric site types.	541720 - Historic and cultural preservation research and development services
Equinox Research and Consulting International, Inc.		Mount Vernon	WBE	A full-service cultural resource management firm. Providing historic and cultural preservation research and development services specializing in completing cultural resource inventories with experience in identifying the widest array of historic and prehistoric site types.	541720 - Historic and cultural preservation research and development services
ER Electrical Engineering PLLC		Lynnwood	DBE	Electrical engineering design and engineering services: power, lighting, communications, security audio, short circuit analysis and PLC programming services.	541330 - Electrical engineering services
ER Electrical Engineering PLLC		Lynnwood	WBE	Electrical engineering design and engineering services: power, lighting, communications, security audio, short circuit analysis and PLC programming services.	541330 - Electrical engineering services
Ethical Enterprises, Inc.		Venice	WBE	Residential and commercial interior services	561720 - Janitorial services
Evergreen Family Dental Mill Creek, Inc.	Evergreen Family Dental Mill Creek	Mill Creek	WBE	Dental office providing treatments for dental related diseases.	802110 - Dentist offices (e.g., centers, clinics)
Ferris Robin LLC		Burlington	WBE	Aerospace soft goods contract manufacturer. Providing finished textile goods to the commercial airline industry such as: barriers, curtains, cushions, mattresses, nets, straps, safety harnesses, covers, and wall panels;	314210 - Curtain and Linen Mills; 314999 - All Other Miscellaneous Textile Product Mills
Finkbomier Flagging LLC	FM Flagging LLC	Ferrisdale	DBE	Temporary traffic control & flagging services. Traffic signs on tripods, drums, pilot truck, and POVs & arrow message boards.	561390 - Flagging (i.e., traffic control) services
Finkbomier Flagging LLC	FM Flagging LLC	Ferrisdale	MWBE	Temporary traffic control & flagging services. Traffic signs on tripods, drums, pilot truck, and POVs & arrow message boards.	561390 - Flagging (i.e., traffic control) services
Fournier Consulting LLC	Fournier Consulting LLC	Edmonds	DBE	Provides consulting services related to strategic planning, business operations, process analysis & improvement, executive & employee mentoring, and customer service & service delivery management.	541611 - Strategic planning consulting services; 541612 - Organization development consulting services; 541634 - Efficiency management (i.e., efficiency expert) consulting services
Fournier Consulting LLC	Fournier Consulting LLC	Seattle	WBE	Provides consulting services related to strategic planning, business operations, process analysis & improvement, executive & employee mentoring, and customer service & service delivery management.	541611 - Strategic planning consulting services; 541612 - Organization development consulting services; 541634 - Efficiency management (i.e., efficiency expert) consulting services
Frederick A. Wierzel DDS PLLC	Wierzel DDS PLLC	Lynnwood	WBE	Local dental practice.	802110 - Dentist offices (e.g., centers, clinics)
Gallo Interpreting Services	Gallo Interpreting Services	Lynnwood	MWBE	Provide language interpretation English to Spanish & Spanish to English. Translation of documents.	541310 - Interpretation services; language
GERALYN REIMART PE	Geralyn Reimart PE	Edmonds	WBE	Civil engineering services. Transportation engineering consulting services including pedestrian, safety, planning, and pre-design analysis and studies.	541330 - Civil engineering services
GIRIMAX INC	Discount Fuel	Vent	WBE	Owner of gas station locations.	531210 - Lessors of nonresidential buildings (except miniwarehouses)



## OMWBE DIRECTORY FOR ISLAND, SKAGIT, WHATCOM AND SNOHOMISH COUNTIES

Company Name	DBA Name	City	Certification Type	Capability	Commodity Codes
Distinctive Voice Consulting		BELLINGHAM	DBE	Educational, diversity, and bias awareness training to increase cultural competency and awareness of diversity and inclusion. Diversity training discusses all the ways that human beings are both similar and different. Bias training raises a person's awareness of attitudes or stereotypes that affect their understanding, actions and decisions in an unconscious manner. Listening to each client's distinct needs and crafting a custom solution to produce successful results. ; Benefits of diversity and bias training include: ; Helping to create a culture of appreciation for diversity and inclusion across cultures; - Helping organizations make better decisions without bias or prejudice; - Helping participants become aware of self-bias and prejudice; - Nurturing a cross cultural environment. ; ;	541512 - Organization development consulting services; 541518 - Other Management Consulting Services; 61430 - Professional and Management Development Training
Distinctive Voice Consulting		BELLINGHAM	MWBE	Educational, diversity, and bias awareness training to increase cultural competency and awareness of diversity and inclusion. Diversity training discusses all the ways that human beings are both similar and different. Bias training raises a person's awareness of attitudes or stereotypes that affect their understanding, actions and decisions in an unconscious manner. Listening to each client's distinct needs and crafting a custom solution to produce successful results. ; Benefits of diversity and bias training include: ; Helping to create a culture of appreciation for diversity and inclusion across cultures; - Helping organizations make better decisions without bias or prejudice; - Helping participants become aware of self-bias and prejudice; - Nurturing a cross cultural environment. ; ;	541512 - Organization development consulting services; 541518 - Other Management Consulting Services; 61430 - Professional and Management Development Training
Diverse Contractors & Associates	DCA	Shelton	DBE	Low income housing, multifamily, residential, commercial, industrial, and institutional construction and renovation contractors including construction management. Cast in place footing and foundation concrete contractors. Chain link fence installation. Building future and fitting, steel and wood framing, millwork, door and window installation. Clearing of building interiors immediately after construction. Carpentry and finish carpentry construction services. Contract and temporary help services.	236115 - Housing, single-family, construction general contractors; 236116 - Low income housing, multifamily, construction general contractors; 236118 - Addition, alteration and renovation, residential building, construction general contractors; 236220 - Addition, alteration and renovation general contractors, commercial and institutional building; 238110 - Roofing and foundation concrete contractors; 238130 - Steel framing contractors; 238550 - Carpenters (except framing); 238300 - Building future and fitting (except mechanical equipment installation); 238990 - Chain link fence installation; 561320 - Temporary help services
Diverse Contractors & Associates	DCA	Shelton	MWBE	Low income housing, multifamily, residential, commercial, industrial, and institutional construction and renovation contractors including construction management. Cast in place footing and foundation concrete contractors. Chain link fence installation. Building future and fitting, steel and wood framing, millwork, door and window installation. Clearing of building interiors immediately after construction. Carpentry and finish carpentry construction services. Contract and temporary help services.	236115 - Low income housing, single-family, construction general contractors; 236116 - Low income housing, multifamily, construction general contractors; 236118 - Addition, alteration and renovation, residential building, construction general contractors; 236220 - Addition, alteration and renovation general contractors, commercial and institutional building; 238110 - Concrete finishing; 238110 - Roofing and foundation concrete contractors; 238130 - Steel framing contractors; 238550 - Carpenters (except framing); 238300 - Building future and fitting (except mechanical equipment installation); 238990 - Chain link fence installation; 561320 - Temporary help services
DRG Development Inc	DRG Development Inc	Bothell	MBE	Full service real estate brokerage and for sale builder for speculative residential single family homes.	236117 - Speculative builders (i.e., building on own land, for sale), residential; 531210 - Real estate brokerages
Dungness Construction Corporation	Dungness Construction	Langley	MBE	Storm water infrastructure construction including storm water controls, storm water pipeline and structures, storm water inlet/outlet structures, infiltration systems, dewatering and drainage, and culvert replacement. Site grading and earthwork.	237110 - Storm sewer construction; 237930 - Drainage project construction; 238310 - Grading construction sites
E Fresh Design, LLC	E Fresh Design	Anacortes	MWBE	Graphic design services with a specialty in the Puget Sound Maritime industry.	541430 - Graphic design services
Edco Inc		Mount Vernon	DBE	Manufacturer that produces a wide range of products according to customer specifications. Fabricate prototypes, production runs, tooling, machined parts, assembled original equipment and machinery, structural and architectural fabrications.	332312 - Fabricated structural metal manufacturing; 332710 - Machine shops; 332721 - Precision turned product manufacturing
Edco Inc	EDCO, INC.	Mount Vernon	MWBE	Manufacturer that produces a wide range of products according to customer specifications. Fabricate prototypes, production runs, tooling, machined parts, assembled original equipment and machinery, structural and architectural fabrications. Work with mild steel, steel alloys, aluminum, plastics, and wood.	332721 - Precision turned product manufacturing
Edwards & Associates Edwards & Associates	Edwards & Associates Edwards & Associates	Everett Snohomish	DBE MWBE	Land use planning, permitting and grant soliciting services. Electrical contractor of highway, road, street, and bridge lighting, sign erection, and electrical traffic signal installation. Permanent signage, illumination, and electrical systems.	541520 - Land use planning services; 541520 - Environmental consulting services; 541520 - Land use planning services; 541520 - Environmental consulting services
Electric West Inc.	Electric West Inc	Mount Vernon	DBE	Electrical contractor of highway, road, street, and bridge lighting, sign erection, and electrical traffic signal installation. Permanent signage, illumination, and electrical systems.	237310 - Sign erection, highway, road, street, or bridge; 239210 - Electrical contractors

Company Name	City	Certification Type	Capability	Commodity Codes
Corrosion Mitigation LLC	Marystown	DBE	Corrosion mitigation services including design, diagnostic testing, monitoring, and inspection.	237120 - Corrosion protection, underground pipeline and oil storage tank
Corrosion Mitigation LLC	Marystown	MBE	Corrosion mitigation services including design, diagnostic testing, monitoring, and inspection.	237120 - Corrosion protection, underground pipeline and oil storage tank
Cosashin Design & Lighting	Tulalip	DBE	Non-residential general contracting company. Specializing in demolition and remodeling of existing commercial buildings.	236220 - Commercial building construction general contractors
Cosashin Design & Lighting	Tulalip	MBE	Non-residential general contracting company. Specializing in demolition and remodeling of existing commercial buildings.	236220 - Commercial building construction general contractors
Cosashin Design & Lighting	Ferrisville	DBE	Lessors of non-residential buildings.	531120 - Lessors of nonresidential buildings (except miniwarehouses)
Cosashin Design & Lighting	Bellingham	DBE	Lay-out and build cast-in-place concrete forms. Place and finish concrete for commercial, residential and government applications using pre-cast and non-pre-cast concrete. Specific work includes foundation footings, stem walls, sidewalks, stairs, cheek walls, seat walls, toe walls, retaining walls, slab on grade, slab on deck flatwork, patios, driveways, concrete paving, ADA curb ramps, curbs and gutters, valley gutter, flush curbs, detectable warning surfaces installation, rolled curbs, curb ramps, flat-work, concrete trench drains, loading docks, elevated slabs, concrete joints, soffit. Architectural and decorative concrete finishes on walls and floors, stamped and tinted finishes, form liner installation, polished finishes, concrete coating, glazing & sealing, cold weather protection. Concrete drilling and epoxy dowels, installing reinforcing rod, bar, mesh and cage.	237130 - Concrete paving (i.e., highway, road, street, public sidewalk), 238110 - Concrete finishing 238120 - Reinforcing rod, bar, mesh and cage installation, 238130 - Forms for poured concrete, erecting and dismantling, 238399 - Concrete coating, glazing or sealing, 238990 - Curb and gutter construction, residential and commercial driveway and parking area, concrete
Custom Concrete Contracting Inc.	Bellingham	MBE	CONCRETE FLATWORK, CERTIFIED FINISHERS LIMITED TO PLACING, CONSOLIDATING, FINISHING, EDOING, JOINTING, CURING AND PROTECTING CONCRETE FLATWORK, DECORATIVE CONCRETE, AND PERVIOUS CONCRETE CERTIFIED INSTALLER.	238110 - Concrete finishing
D. VO Transport LLC	Burlington	DBE	Local dump trucking, limited to dirt, gravel, sand, rock, asphalt, and topsoil.	484220 - Dump trucking (e.g., gravel, sand, top-soil)
D. VO Transport LLC	Burlington	MBE	Local dump trucking, limited to dirt, gravel, sand, rock, asphalt, and topsoil.	484220 - Dump trucking (e.g., gravel, sand, top-soil)
Dell Construction Services Inc.	Marystown	MBE	Drywall and insulation Contractor limited to hanging, taping, sanding, spackling, mudding, taping, securing, framing, and moisture control.	238310 - Drywall contractors
Dorian Amla DDS PLLC	Snohomish	MBE	Provision of general dentistry and preventive oral health care including restorative, prophylactic care, crown and bridge, fillings, orthodontic maintenance, oral surgery, and endodontics.	631210 - Dentists' offices (e.g., centers, clinics)
DuraQuest, LLC	Snohomish	WBE	Background checks, drug testing. Accredited background screening company offering criminal background checks, civil searches, social security trace & address locator, national criminal database searches, national sex offender registry checks, National/Global watch lists, employment & education verification, professional license verification, credit reports, motor vehicle reports/dmv checks, drug testing services (DOT / Non-DOT)	561611 - Background check services 631999 - Employee drug testing services
Edison Powell LLC	Everett	WBE	Lessors of non-residential buildings.	531120 - Lessors of nonresidential buildings (except miniwarehouses)
EDOK, PLLC	Worcester	MBE	Family dentistry providing family and cosmetic dentistry including ceramic restoration, oral surgery, root canal, and implants.	631210 - Family dentist offices (e.g., centers, clinics)
EDOKK Inc.	Everett	DBE	Online retailer selling industrial aqueous parts cleaning systems and maintenance of the systems.	464110 - Business to Consumer retail sales internet sites
EDOKK Inc.	Everett	WBE	Online retailer selling industrial aqueous parts cleaning systems.	464111 - Business to Consumer retail sales internet sites
Edraia L. Trucking, Inc.	Starwood	WBE	Providing dump trucking services including general freight, meat, sheets, coils, rolls, logs, poles, beams, lumber, building materials, machinery, large objects, fresh produce, livestock, grain, feed, hay, agricultural/farm supplies and construction.	484220 - Dump trucking (e.g., gravel, sand, top-soil)
Design2 Last Inc.	Edmonds	DBE	Architectural design firm focused on sustainable design for commercial projects.	541310 - Architectural (except landscape) services 541340 - Drafting services
Design2 Last Inc.	Edmonds	WBE	Architectural design firm focused on sustainable design for commercial projects.	541310 - Architectural (except landscape) services 541340 - Drafting services

**OWBE DIRECTORY FOR ISLAND, SKAGIT, WHATCOM AND SNOHOMISH COUNTIES**

Company Name	DBA Name	City	Certification Type	Capability	Commodity Codes
CARLAKEEL GROUP PLLC	CARLAKEEL GROUP PLLC	La Conner	WBE	We are a Consulting Structural Engineering Firm with strong capabilities involving innovative designs of a large variety of project types. Clients value our creative problem solving, high quality engineering and individual attention.	541330 - Engineering services; 541512 - CAD (computer-aided design) systems integration design services; 541512 - Computer-aided design (CAD) systems integration design services
Cascade Management and Consulting LLC	Cascade Management and Consulting, LLC	Monroe	WBE	Efficiency expert & management consulting services including IT project management/design/security/business impact analysis, continuity/disaster recovery (BC/DR), physical security assessment, change management & IT training disaster planning and response. Organizational development, computer disaster recovery, & operations services. Efficiency, logistics, information, executive & start-up management consulting services; 541614 - Efficiency management (i.e., efficiency expert) consulting services; 541690 - Security consulting services; 611400 - Management development training	541512 - Information management computer systems integration design services; 541513 - Facilities (i.e., clients' facilities) management and operation services; computer systems or data processing; 541519 - Computer disaster recovery services; 541611 - Business start-up consulting services; 541612 - Organization development consulting services; 541613 - Marketing management consulting services; 541614 - Efficiency management (i.e., efficiency expert) consulting services; 541690 - Security consulting services; 611400 - Management development training
Cayley Aerospace Inc.	Cayley Aerospace Inc.	Lynnwood	MBE	Aircraft engineering and certification, chartered engineer certification services, professional and scientific technical services, aircraft design, analysis, and certification.	541330 - Mechanical engineering services
CCN, INC	Technology Express	Bothell	MBE	Retail sales of computers and peripherals.	443142 - Computer stores
Cedar Street Management LLC	Cedar Street Management LLC	Everett	WBE	Commercial building rental or leasing.	531120 - Commercial building rental or leasing
Center LLC	Electrical Hub	Mukilteo	WBE	Wholesale distributor of electrical supplies.	423810 - Cables and connectors; electrical merchant wholesalers
Cheryl Buck Inc	Cheryl Buck	Lake Stevens	WBE	Commercial and residential real estate agents' office, HUD, Fannie Mae, and Freddie Mac home listings, and property management.	531210 - Real estate agents' offices; 531311 - Managing residential real estate; 531312 - Managing commercial real estate
Chris Koser LLC	Chris Koser LLC	Edmonds	WBE	Provides workplace conflict and conduct issues facilitation along with training for managing team conflict, conflict coaching, and equal employment opportunity mediation and investigation.	541611 - General management consulting services; 541612 - Human resource consulting services
CITY Construction LLC	CITY Construction LLC	Everett	WBE	Installs exterior siding for commercial and residential building.	238170 - Siding contractors
Clemen Dental Center LLC	Clemen Dental Center LLC	Seattle	MBE	Lessors of nonresidential buildings.	531120 - Lessors of nonresidential buildings (except miniwarehouses)
Clio Samia-Lindnerauer DDS PLLC	Silver Lake Dental Arts	Everett	WBE	A general dentistry practice that provides preventative, restorative and surgical dental care to patients of all ages. Services include dental cleanings, exams, fillings, crowns, extractions, dentures and other related procedures.	621210 - Family dentists' offices (e.g., centers, clinics)
Cloud611 Corp	Cloud611	Snohomish	MWBE	Provides web consulting services which consists of training, selling, and deploying Wordpress, Office 365 cloud solutions.	541512 - Computer software consulting services or consultants; 611420 - Computer software training
Coleman Public Relations & Consulting Firm LLC	Coleman Public Relations & Consulting Firm LLC	Lynnwood	DBE	Project management in public media and relations consulting. Firm utilizes social media, television, radio, and marketing and promotional materials via creating print and electronic means e.g. brochures, flyers, posters, etc.	541820 - Public relations consulting services
Coleman Public Relations & Consulting Firm LLC	Coleman Public Relations & Consulting Firm LLC	Lynnwood	MBE	Project management in public media and relations consulting. Firm utilizes social media, television, radio, and marketing and promotional materials via creating print and electronic means e.g. brochures, flyers, posters, etc.	541820 - Public relations consulting services
Colleen Tracy Dentistry	Colleen Tracy Dentistry	Everett	WBE	General dentistry and oral sedation.	621210 - Family dentists' offices (e.g., centers, clinics)
Communication Resources Northwest LLC	Communication Resources Northwest LLC	Mill Creek	WBE	Communication consulting including research, training, coaching, and facilitation.	541611 - Administrative management consulting services; 611400 - Professional development training
Complete Property Services LLC	Complete Property Services LLC	Everett	WBE	Sells bank foreclosures for residential and multi-family properties, assists homeowners with short sales, and also sells property to state agencies.	531210 - Agents, real estate
Computer Consultants International, Inc.	Computer Consultants International, Inc.	Mukilteo	DBE	Professional information expert level technology services including platform & customized technology development & implementation. Long-term decision making, feasibility studies, cost-benefits analysis, build-vs-buy decisions, gap analysis & ROI. International strategic planning for globalization opportunities in the off-shore markets. Disaster recovery consultations. Software & network design, administration, & virtualization. Website planning, design, branding, internet security & hosting.	435110 - Business to business electronic markets, durable goods, wholesale trade; 541511 - Computer programming services, custom; 541512 - Computer systems integration analysis and design services; 541611 - Administrative management consulting services
Computer Consultants International, Inc.	Computer Consultants International, Inc.	Mukilteo	MWBE	Professional information expert level technology services including platform & customized technology development & implementation. Long-term decision making, feasibility studies, cost-benefits analysis, build-vs-buy decisions, gap analysis & ROI. International strategic planning for globalization opportunities in the off-shore markets. Disaster recovery consultations. Software & network design, administration, & virtualization. Website planning, design, branding, internet security & hosting.	435110 - Business to business electronic markets, durable goods, wholesale trade; 541511 - Computer programming services, custom; 541512 - Computer systems integration analysis and design services; 541611 - Administrative management consulting services
Corkley, LLC	Corkley, LLC	Lynnwood	WBE	Real estate management, property management and real estate development on self-owned properties.	531120 - Commercial building rental or leasing; 531312 - Commercial property managing

**OWBE DIRECTORY FOR ISLAND, SKAGIT, WHATCOM AND SNOHOMISH COUNTIES**

Company Name	DBA Name	City	Certification Type	Capability	Commodity Codes
Birch Equipment Company Inc.	Birch Equipment Rental and Sales Inc.	Bellingham	DBE	Commercial and industrial machinery construction equipment rentals, sales, and leasing (without operator) such as earth moving equipment, trucks, tractors, lawnmowers, power washers, skids, and generators. Construction machinery and equipment merchant wholesalers.	423810 - Construction machinery and equipment merchant wholesalers; 532412 - Earthmoving equipment rental or leasing without operator; 532490 - Truck, industrial, rental or leasing
Birch Equipment Company Inc.	Birch Equipment Rental and Sales Inc.	Bellingham	WBE	Commercial and industrial machinery construction equipment rentals, sales, and leasing (without operator) such as earth moving equipment, trucks, tractors, lawnmowers, power washers, skids, and generators. Construction machinery and equipment merchant wholesalers.	423810 - Construction machinery and equipment merchant wholesalers; 532412 - Construction machinery and equipment rental or leasing without operator; 532490 - Industrial truck rental or leasing
Bluekoll General Contractor	Bluekoll General Contractor	Everett	WBE	Provides janitorial cleaning services with a specialization in commercial kitchen cleaning.	561720 - Restaurant kitchen cleaning services
BRAMBLE BERRY INC	BRAMBLE BERRY INC	Bellingham	WBE	Retails soapmaking materials, specifically, bulk lotion base, bulk dishwashing detergent, bulk bar soap and crafting materials so consumers can make their own soap.	532511 - Soap (e.g., bar, chip, powder) manufacturing; 423520 - Hobbyists' supplies merchant wholesalers; 484111 - Business to Consumer retail sales Internet sites; 454111 - Web retailers
Brandquerry LLC	Brandquerry LLC	Mount Vernon	DBE	Provides marketing & brand enhancement consulting services in food/retail, health care, tourism, services, civic, financial & educational institutions, & non-profits integrating traditional marketing with media platforms. Branding/identity services and through marketing into graphics with visual elements, in digital web advertising, video, graphic design, social media and public relations.	541430 - Graphic design services; 541512 - Network systems integration design services, computer; 541611 - Marketing consulting services; 541810 - Public relations services
Brandquerry LLC	Brandquerry LLC	Mount Vernon	WBE	Provides marketing & brand enhancement consulting services in food/retail, health care, tourism, services, civic, financial & educational institutions, & non-profits integrating traditional marketing with media platforms. Branding/identity enhancement through marketing, info graphics with visual elements, mobile/web advertising, video, graphic design, social media and public relations.	541430 - Graphic design services; 541512 - Network systems integration design services, computer; 541611 - Marketing consulting services; 541810 - Public relations services
Brawo Zulu Solutions LLC	Urban Resource Consulting and Talent Acquisition Agency	Bethell	WBE	Urban Resource Consulting and Talent Acquisition Agency	541612 - Human resource consulting services
Bremen Contractors LLC	Bremen Contractors, LLC	Bellingham	DBE	Provides landscape services including (but not limited to) install plants and shrubs, straw mulch and leather mulch, lawn care services including fertilizing, mowing and hand seeding, lawn sprinkler installation and maintenance.	538220 - Lawn sprinkler system installation; 561730 - Landscape contractors (except construction); 561730 - Lawn care services (e.g., fertilizing, mowing, seeding, spraying)
Bremen Contractors, LLC	Bremen Contractors, LLC	Bellingham	WBE	Residential and commercial plan and design (non-architectural), initial plants and shrubs; straw blankets, and wattles including streams. Lawn care services including fertilizing, mowing and hand seeding. Lawn sprinkler installation and maintenance.	538220 - Lawn sprinkler system installation; 561730 - Landscape contractors (except construction); 561730 - Lawn care services (e.g., fertilizing, mowing, seeding, spraying)
Bridgeworks Communications		Bellingham	WBE	Public involvement and community outreach services.	541990 - All Other Professional, Scientific, and Technical Services; 813319 - Community action advocacy organizations
Bryan & Bryan Associates	Bryan & Bryan Associates	Everett	WBE	Management consulting and development training specializing in keynote speaking, education day presenter, management or employee trainer, retreat facilitator, organization consultant, and executive coaching.	541611 - General management consulting services; 811430 - Management development training
CAD/CAB, LLC		Edmonds	WBE	Design Drawings with AutoCAD Civil 3D Design support including grading and earthwork for civil engineering projects. Generate new drawings, permit and construction level, per client specifications. Specializing in drawing standards, developing site layouts, plans, sections, profiles, elevations, schematics and details, as-built drawings, converting hard sketches, redlines, manage drawing revisions during construction and assuring quality control of drawings.	541340 - Computer-aided design drafting (CADD) services
Cander Supply LLC		Snohomish	DBE	Distribution of construction materials, electrical, lighting and controls, uninterruptible power supplies, automated equipment and controls, solar photovoltaic systems, IT and communication products and services.	423810 - Electrical Apparatus and Equipment, Wiring Supplies, and Related Equipment Merchant Wholesalers; 438590 - Electronic communications equipment merchant wholesalers
Capital Architects Group PC	Capital Group PC	Everett	DBE	Architectural design services for commercial, residential, historic preservation and interior design projects. Feasibility studies. Contract administration.	541310 - Architectural (except landscape) design services; 541410 - Interior design consulting services
Capital Architects Group PC	Capital Architects Group PC	Everett	WBE	Architectural design services for commercial, residential, historic preservation and interior design projects. Feasibility studies. Contract administration.	541310 - Architectural (except landscape) design services; 541410 - Interior design consulting services

Page 4



**OWBDE DIRECTORY FOR ISLAND, SKAGIT, WHATCOM AND SNOHOMISH COUNTIES**

Company Name	DBA Name	City	Certification Type	Capability	Commodity Codes
Berona Engineers Inc	Berona Engineers Inc	Lynnwood	DBE	Licensed mechanical professional engineer design and services including institutional, industrial, airports, healthcare, commercial, mis-use, & tribal. Commissioning services, HVAC, plumbing & piping, sustainable design, the firm has LEED accredited staff in water planning, cost analysis, and system controls to public and private clients.	541330 - Mechanical engineering services
Berona Engineers Inc	Berona Engineers Inc	Lynnwood	MBE	Licensed mechanical professional engineer design and services including institutional, industrial, airports, healthcare, commercial, mis-use, & tribal. Commissioning services, HVAC, plumbing & piping, sustainable design, the firm has LEED accredited staff in water planning, cost analysis, and system controls to public and private clients.	541330 - Mechanical engineering services
Best Finish Concrete LLC		Marysville	DBE	Concrete finishing on post tension flat-work, slabs, stairs, roadways, curbs, gutters, overlays on commercial, industrial, warehouse, heavy civil. Roadway paving with concrete. Concrete saw and patch, polishing and grinding. Custom stamped concrete flat-work, stairs, sidewalks, and roadways.	238110 - Concrete finishing
Best Finish Concrete LLC		Marysville	WBE	Concrete finishing on post tension flat-work, slabs, stairs, roadways, curbs, gutters, overlays on commercial, industrial, warehouse, heavy civil. Roadway paving with concrete. Concrete saw and patch, polishing and grinding. Custom stamped concrete flat-work, stairs, sidewalks, and roadways.	238110 - Concrete finishing
Blanchi LLC	Blanchi Construction	Mount Vernon	DBE	Excavating, earthmoving, grading, site prep, and land clearing contractors. Demolition of buildings, structures, roads, sidewalks, & parking lots. Water, storm water and sewer utility line construction and installation. Install of vaults, hydrants and manholes. Foundation construction. Retaining walls, foundation, drainage, and floodgates. Drainage, embankment and road scaling. Dump trucking of gravel, sand, top soil. Highway, bridge, road, culvert, abutment & street construction. Flagging services. Landscaping services for erosion control: slope stabilization, catch basins, bio swales, retention ponds.	237110 - Utility line (i.e., sewer, water), construction; 237310 - Highway construction; 237990 - Earth retention system construction; 238910 - Demolition, building and structure; 23910 - Excavation contractors; 23930 - Grading construction sites, 40420 - Dump trucking (e.g., gravel, sand, top soil); 541700 - Landscaping services (except planning); 541900 - Flagging (e.g., traffic control) services
Blanchi LLC	Blanchi Construction	Mount Vernon	MBE	Excavating, earthmoving, grading, site prep, and land clearing contractors. Demolition of buildings, structures, roads, sidewalks, & parking lots. Water, storm water and sewer utility line construction and installation. Install of vaults, hydrants and manholes. Foundation construction. Retaining walls, foundation, drainage, and floodgates. Drainage, embankment and road scaling. Dump trucking of gravel, sand, top soil. Highway, bridge, road, culvert, abutment & street construction. Flagging services. Landscaping services for erosion control: slope stabilization, catch basins, bio swales, retention ponds.	237110 - Utility line (i.e., sewer, water), construction; 237310 - Highway construction; 237990 - Earth retention system construction; 238910 - Demolition, building and structure; 23910 - Excavation contractors; 23930 - Grading construction sites, 40420 - Dump trucking (e.g., gravel, sand, top soil); 541700 - Landscaping services (except planning); 541900 - Flagging (e.g., traffic control) services
Big Trees, Inc	Big Trees, Inc	Snohomish	DBE	Wholesale and retail nursery selling larger stock trees - 10-25' and 24" caliper - providing many varieties of sizes and color that thrive in the Pacific Northwest climates; operates a 30" tree spade, and provides tree transplanting services on and off site - including storage of trees at the nursery.	444220 - Nursery and garden centers without tree production; 541700 - Landscaping services (except planning)
Big Trees, Inc	Big Trees, Inc	Snohomish	WBE	Wholesale and retail nursery selling larger stock trees - 10-25' and 24" caliper - providing many varieties of sizes and color that thrive in the Pacific Northwest climates; operates a 30" tree spade, and provides tree transplanting services on and off site - including storage of trees at the nursery.	444220 - Nursery and garden centers without tree production; 541700 - Landscaping services (except planning)
BIO CLEAN INC	A BIO CLEAN INC A TRAUMA SCENE BIO CLEAN	Marysville	WBE	Remove & clean biohazards from suicides, homicides, decomposed bodies, public areas where vandalism has occurred, mold, sewage, flooding, hypodermic needle pick up, biohazard pick up & disposal. Area building inspector for asbestos, methamphetamine clean up.	561720 - Building cleaning services, janitorial; 562112 - Waste collection services, hazardous; 562910 - Asbestos removal contractors; 562910 - Lead paint removal contractors; 562910 - Remediation and cleanup of contaminated buildings, mines sites, soil, or ground water; 562910 - Toxic material removal contractors

Page 3