

carolina christian college

preparing real people for a real ministry in a real world



School Catalog 2024 – 2026

Preparing Real People for a Real Ministry in a Real World
The Premier Biblical Institution of the Triad

**Carolina Christian College
Academic Catalog
All Levels

2024-2026**

Main Campus:

**4209 Indiana Ave.
Winston-Salem, NC 27105**

Physical Address Texas Campus:

**20498 Rhodes Rd.
Spring, TX 77388**

**Telephone: (336) 744-0900
Fax: (336) 744-0901
www.carolina.edu**

Table of Contents

Letter from the President	4
About CCC.....	4
Purpose CCC.....	5
Statement of Faith	7
Accreditation	8
General Information	9
Admissions.....	11
Academic Policies.....	13
Registration	15
Satisfactory Academic Progress	16
Requirements for Graduation	22
Financial Information.....	27
Financial Aid.....	29
Institutional Goals	30
Student Learning Objectives	30
Programs of Study.....	33
Undergraduate Course Descriptions.....	44
Graduate Course Descriptions.....	54
Board of Directors.....	62
Administration & Staff.....	62
Calendar	63
Floor Plans	64

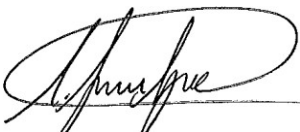
LETTER FROM THE PRESIDENT

What a joyous occasion this day signifies, for you have decided to answer the call and further your Biblical education. I am appreciative that you have entrusted CCC to teach you an effective approach to articulate your beliefs and inspire your personal ministry. It is our desire to meet your needs through education, edification, empowerment, and elevation as you are prepared for the real world.

You are joining a reach history that prides itself in nurturing the servants of God so that they will expand God's kingdom. We are only one member in this great body of Christ, but we can change the world through students like you.

As I reflect on the lovely students of CCC, I know that you too, will strive for excellence over the next few years to achieve a dream that is rooted in the principle that "Education is the Foundation of Success."

God's Servant



LaTanya Tyson, Ph.D.

ABOUT CCC

HISTORY

In 1945, two dynamic, progressive-thinking evangelists, one black and the other white, embarked on a historical journey that birthed Carolina Christian College. Dr. R. L. Peters, an innovative black evangelist from the Christian Churches and Churches of Christ, and J. W. West, a well-known evangelist of the Appalachian Mountains, agreed together to begin a training school for black men and rural whites who aspired to leadership in Christian ministry but did not have access to quality education in this field. Dr. Peters led the training and equipping work, and Reverend West raised the finances. Thus, was born, in a store-front building on Wheeler Street in Winston-Salem, North Carolina, a school known at the time as The Christian Institute.

This fledgling school facilitated the education of both black and white and male and female students in integrated classrooms during the turbulent days prior to the modern "Civil Rights Movement." Dr. Peters' vision and desire to help the hurting and disenfranchised in our community also propelled him to start a mattress factory as his "tent ministry" employing the disabled. This business/ministry later became the "Industries for the Blind" in Winston-Salem.

The College was incorporated as Winston-Salem Bible College in 1950 and holds Non-Profit 501c3 status with the NC Secretary of State's office. In May of 2007, the Bible College Board of Directors renamed the college "Carolina Christian College," (CCC) better reflecting the reach and impact of the school.

For more than seventy-five years, CCC has been training Christian leaders who are having a positive impact in their communities, with a focus on the African American community. These well-trained leaders positively influence communities and nations around the world; they are leading and planting churches and taking active leadership roles in private and government sectors and the business community.

CCC offers a unique opportunity for African American and students of all races to prepare for the kind of leadership that can bridge the communication gap that exists between people of diverse cultures locally and around the world.

Our proactive interracial environment provides a social and educational experience that enables our students to become successful leaders in the community with a Biblical worldview.

In 2013, the Board of Directors enacted a major revitalization when they installed the first African American female president, Dr. LaTanya Tyson. Dr. Tyson has set a vision inspired by God to lead this institution into the renowned status as the premier Biblical institution in the Triad area.

The College employs several innovative techniques to facilitate the training of students: all classes are presented in a boardroom type setting; classes are collaborative in nature; each class employs modern technology; and some classes are held at local churches, bringing our professors back to the local community.

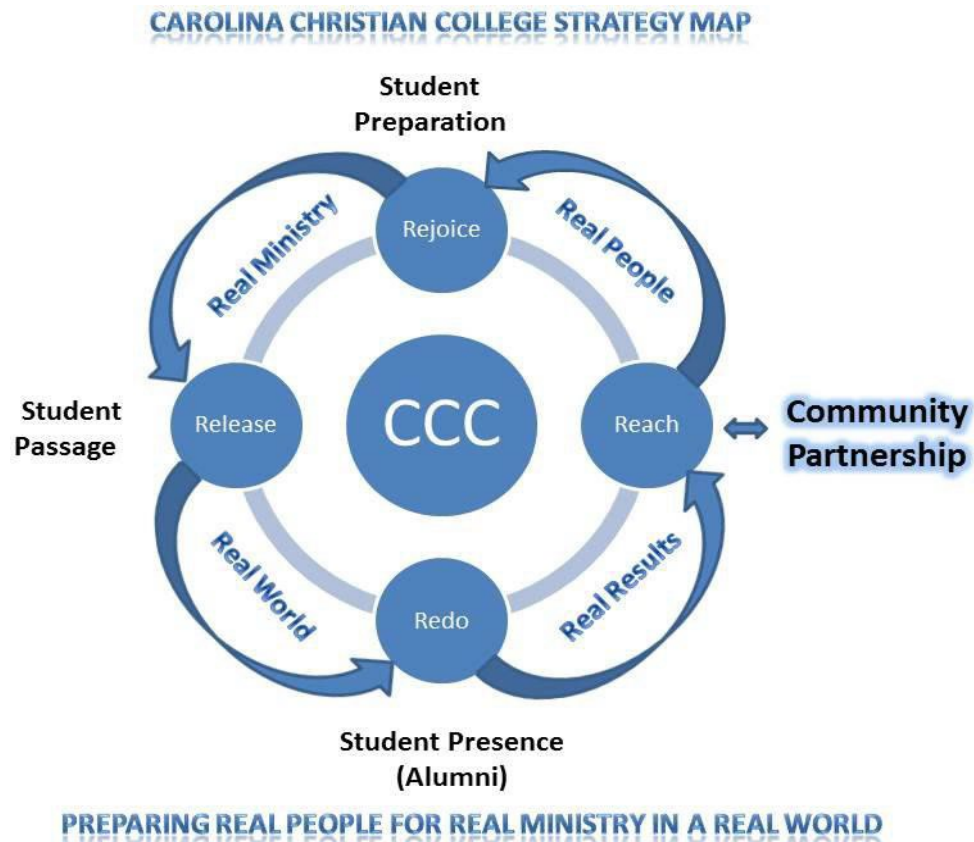
Carolina Christian College continues to fulfill the vision of its founders. The student body reflects the community that it serves with black and white, male, and female students. The heart of Carolina Christian College is expressed in our vision:

“Preparing real people for real ministry in a real world.”

THE PURPOSE OF CCC

The 4R(E) fulfills CCC’s commitment to its vision of “Preparing real People for real Ministry in a real World”.

We educate, edify, empower, and elevate through the following strategy:



CCC adheres to the following values and actions to carry its mission:

- ❖ Leadership
- ❖ Christian Education
- ❖ Integrity
- ❖ Community
- ❖ Diversity
- ❖ Transformation

Action Plans for Carolina Christian College

Leadership:

We believe at Carolina Christian College that we are called to servant leadership in our actions and in our deeds, to lead by example and to serve those who aspire to serve as leaders in ministry. We strive in all that we do to create opportunities for students to identify and utilize skills and talents that promote leadership as part of their academic tenure, in the community and in ministry.

Actions:

- We accomplish this as part of student's academic tenure through student-led activities and events such as monthly Chapel Services and Research initiatives.
- We accomplish this in the community through community service projects.
- We accomplish this in ministry both locally and abroad through student organized mission trips and student development as leaders in all facets of ministry in their respective churches.

"The greatest among you shall be your servant." Matthew 23:11

Christian Education:

Carolina Christian College we value: **Christian Education**-We believe God is calling us to focus on Christian Education in our attempt to provide students real ministry in a real world to improve missions, Christian service, and leadership development. We accomplish this by exploring the challenges and opportunities encountered by Christian Educators and increase the proficiency of teaching through new models of Christian Education.

Actions:

- Faculty will attend professional development training, focus groups, and conferences.
- CCC will provide Workshops, and seminars in partnership with community organizations and other schools.

Prov. 9:9 (NKJV) "Give instruction to a wise man, and he will be still wiser."

Integrity:

We at Carolina Christian College value integrity by providing an educational environment where our students pursue academic goals and at the same time develop a Christ-like character.

Action: We accomplish this when:

- All students feel a sincere responsibility for their own integrity and the welfare of each other.
- All faculty and staff demonstrate honesty and integrity with all institutional constituencies.

Prov. 11:3 "The integrity of the upright guides them, but the unfaithful are destroyed by their duplicity."

Community:

We at Carolina Christian College value community and actively seek to engage the community in ministry and education. To this end, we seek to REACH the community in several different ways. Using the acronym, A.R.E.A we will be purposeful in reaching the surrounding "Area" of our community with the following actions.

Actions:

A. Advertising - Engage target market (Traditional & Non-traditional African American students from 18-60) through diverse media formats. (Print, radio, internet, television).

R. Relationships - Target local churches and religious/civic organizations to collaborate in programs,

services, and events to increase brand visibility and recognition; this will create an atmosphere of trust in the community that will result in increased student enrollment and community involvement.

E. Ecumenical - Foster relationships with local clergy through luncheons, open houses, and unique events to create avenues of discussion to identify ways to better fulfill needs in the community. Also, offer church certificate and extension programs to create alternative revenue sources for the school and ministry resources for the community.

A. Atmosphere - Increase quality of the educational environment by offering all educational level degrees and creating facilities to meet the student and community needs. Gen. 28:3 “May God almighty bless you...and increase your numbers until you become a community of people.”

Diversity:

We at Carolina Christian College value diversity among students, faculty, and staff regarding their personal spiritual context. The foundation of CCC was built on the principle of diversity to include all individuals who desire to learn biblical teaching in a safe environment.

Actions:

- Actively engage differing beliefs contexts in the classroom settings
- Purposefully embrace people of differing races, cultural backgrounds, and ethnic origins.

Ps. 139: 14 “I will praise thee for I am fearfully and wonderfully made.”

Transformation:

We at Carolina Christian College value transformation. We prayerfully and intentionally rejoice with our students as they develop spiritually and academically. We seek to assist our students to transform spiritually and academically by:

Actions:

- Engage students in chapel service to assess spiritual growth in a corporate setting.
- Provide opportunities for Christian service for each student to increase community involvement in a ministry context.
- Evaluate academic and spiritual progression by utilizing an array of assessment tools.

Ro. 12: 2 “Be ye transformed by the renewing of your mind that you may be able to prove what is that good, acceptable, and perfect will of God”.

STATEMENT OF FAITH

We believe in one Almighty and All-Wise God who is the Creator of all things and who has expressed Himself in the personalities of Father, Son, and Holy Spirit.

We believe that Jesus of Nazareth, the Messiah prophesied by the Old Testament Scriptures, is the divine Son of the Living God and the only Savior of humankind.

We believe fully in the inerrancy and inspiration of the Bible; that is to say, that it is the infallible Word of God, breathed by Him to the Apostles and Prophets who wrote it down for our instruction. The Bible is, therefore, the all-sufficient rule of faith and practice.

We believe that salvation from sin and final judgment is made available by the grace of God through the death of Jesus Christ for all who come to Him through true faith and full obedience to His Gospel.

DOCTRINAL STATEMENT

CCC uses the Bible as its chief textbook. It is held to be the God-breathed and inerrant revelation of God to man. It is taught as the all-sufficient guide for living and for the organization and direction of the Church. CCC is devoted to the promotion of unity of all believers through the restoration of Biblical Christianity.

MISSION

It is the mission of Carolina Christian College to provide Biblically based academic programs that prepare men and women of all races for ministry and community service with a focus on the African American community.

GRADUATE SCHOOL MISSION

In conjunction with the mission of Carolina Christian College, the mission of the graduate program is to further equip post-baccalaureate students with advanced studies in Christian ministries to strengthen their skills and knowledge in religious education through the study of major sources of Biblical, theological, historical, ethical, and cultural studies.

POST-GRADUATE SCHOOL MISSION

In conjunction with the mission of Carolina Christian College, the mission of the post-graduate program is to further equip post-graduate students with advanced studies in Christian leadership to further develop their God-given skills for ministry through the study of leadership competencies in today's global environment.

INSITUATIONAL GOALS

Carolina Christian College (CCC) is a 4-year and above, private-not-for-profit special focus faith-based institution. CCC educates persons for Christian ministries through a program of Biblical and theological studies, general education in the arts and sciences, and professional studies. Emphasis is placed upon cultural awareness that will prepare workers to establish and serve the church in the United States and around the world.

In accordance with the College's special purpose stated above, Carolina Christian College recognizes that a student must be as fully prepared as possible. Therefore, the goals of the institution are as follows:

1. The College will provide our students with an authentic Christian life experience.
2. The College will develop our students into more responsible citizens.
3. The College will develop the students' critical thinking skills.
4. The College will foster a culture that promotes scholarship and life-long learning.

The curriculum of the College is designed primarily to equip students to become preachers, missionaries, Christian educators, and workers skilled in communicating the Gospel. Some students may also enter Carolina Christian College to seek a Christian education as a foundation for future living.

ACCREDITATION

CCC is accredited by the Association for Biblical Higher Education (ABHE), P.O. Box 780339, Orlando, Florida, (407) 207-0808. ABHE is an institutional accrediting body recognized by the Council for Higher Education and the Department of Education. CCC credits are readily accepted in transfer to all colleges of the ABHE as well as to other Bible colleges. Many CCC students and graduates have also transferred to secular colleges and universities without loss of credit.

GENERAL INFORMATION

THE VALUE OF A BIBLE COLLEGE EDUCATION

A Bible college education is specialized. Just as an aspiring physician enrolls in medical school and a prospective engineer attends engineering college, those who desire to serve in the cause of Christ and the Church naturally enroll in a Bible college. A Bible college is concerned with offering a course of study that will equip its students for Christian lifestyle and leadership. A Bible college does not compete with state-supported or private secular schools by duplicating their programs, just as colleges associated with the University of North Carolina system do not offer ministerial or religious educational training programs.

Bible College graduates are in demand by the Church, the educational community, and the business world because they are known to have the special qualities of education, integrity, and industry that are needed by all. Acceptance of secular work by a Bible College graduate does not necessarily mean “leaving the ministry.” Often it is a means of opening greater opportunities for Christian witness since self-supported Christian workers are able to pioneer new fields for Christ and His Church.

Should you go to a Bible college? Let the Lord lead you to the correct answer to that question but remember that if He accelerated you into Christian service, your best preparation will be in a college which specializes in educating and training people for the Lord’s work. If a secular profession is your calling, there is a great value in obtaining a foundation in Bible and Christian service before pursuing your chosen vocation. In either case, the Bible college is a good educational investment.

Carolina Christian College prepares its graduates for unlimited opportunities to serve in a variety of Christian leadership fields, both nationally and internationally. In addition to a highly qualified faculty, our students are privileged to meet and hear outstanding Christian leaders from around the world. We are a cross-cultural college, particularly concerned about the spiritual needs of neglected cultures. Christian morality and integrity are central, and a high standard of scholarship is maintained at a minimal tuition cost. Carolina Christian College is an inter-denominational college with an evangelistic thrust in its curriculum.

CAMPUS SITES

In 2018, CCC was approved for an extension campus in East Carolina (Roanoke Rapids). Also, an additional location in Spring, TX for doctoral studies. Students enrolling at both campuses adhere to the same policies and procedures of the main campus. Students enrolled at the East campus can only complete up to 50% of their courses at this site. Other courses must be taken at the main campus. Students enrolled at the Texas campus can complete their entire degree at this site.

CHRISTIAN SERVICE

It is the mission of Carolina Christian College to provide Biblically-based academic programs that prepare men and women of all races for ministry and community service with a focus on the African-American community. Out of our mission statement, we have these objectives:

1. Authentic Christian experience
2. Demonstrating activity in Christian service.

The Christian service program allows for students to actively participate in successfully achieving these stated objectives. Christian service is more than an assignment for a grade; it is done for the glory of God. All of our students are encouraged to participate in Christian service every semester they are enrolled in classes by connecting to their ministry context. Traditional forms include church attendance and participation; however, the College also believe in non-traditional ministry engagement, volunteer opportunities, and virtual-bible discussion within different platforms. Each student is required to complete 80 hours to fulfill their B.A. graduation requirements. Applicants to the above-baccalaureate programs are required to provide proof of Christian Service for admittance.

EXEMPTION STATEMENT

Degree programs of study offered by Carolina Christian College have been declared exempt from the requirements for licensure under provisions of North Carolina General Statutes (G.S.) 116-15(d) for exemption from licensure with respect to religious education. Exemption from licensure is not based upon any assessment of program quality under established licensing standards.

CHANGE OF INFORMATION NOTICE

The information contained in this catalog was accurate at the time of publication. Following publication any of the catalog information may change without notice, including, without limitation, the information regarding tuition, fees, class schedule, student calendar, program outline, course descriptions, curriculum, faculty, student services, administrative policies, and financial assistance.

FAMILY EDUCATIONAL RIGHTS AND PRIVACY

Notification of Rights under FERPA for Postsecondary Institutions

The Family Educational Rights and Privacy Act (FERPA) affords students certain rights with respect to their education records.

They are:

1. The right to inspect and review the student's education records within 45 days of the day the College receives a request for access. Students should submit to the Academic Dean written requests to identify the record(s) they wish to inspect. The Academic Dean will make arrangements for access and notify the student of the time and place where the records may be inspected.
2. The right to request the amendment of the student's education records that the student believes are inaccurate or misleading. Students may ask the College to amend a record that they believe is inaccurate or misleading. They should write the College official responsible for the record, clearly identify the part of the record they want changed and specify why it is inaccurate or misleading. If the College decides not to amend the record as requested by the student, the College will notify the student of the decision and advise the student of his or her right to a hearing regarding the request for amendment.
3. The right to consent to disclosures of personally identifiable information contained in the student's education record, except to the extent that FERPA authorizes disclosure without consent. One exception, which permits disclosure without consent, is disclosure to school officials with legitimate educational interests. A school official is a person employed by the College in an administrative, supervisory, faculty, academic or research, or support staff position. A school official has legitimate educational interest if the official needs to review an education record in order to fulfill his or her professional responsibility.
4. The right to file a complaint with the U.S. Department of Education concerning alleged failures by Carolina Christian College to comply with the requirements of FERPA. The name and address of the office that administers FERPA is Family Policy Compliance Office, U.S. Department of Education, 600 Independence Avenue, SW, Washington, DC 20202-4605.

DRUG/SMOKE FREE POLICY

The administration believes that illegal drugs among any segment of the college's population conflict seriously with the institutional mission; therefore, the college strives to maintain a drug free campus. In addition, CCC is a smoke-free campus. This applies to all sites.

POLICY OF NON-DISCRIMINATION

Carolina Christian College does not discriminate because of race, gender, color, creed, national origin, or disability. We are committed to assisting students in the development of vocational/professional skills with their chosen denomination.

LIBRARY

Aubrey Payne Library Mission Statement: The mission of the Aubrey L. Payne Library is to provide the library resources necessary to support the College curriculum and to provide resources that students, faculty, and staff need to serve effectively in their ministries and to grow spiritually.

Named in honor of Aubrey L. Payne, former professor and trustee of the college, the library seeks “to provide the library resources necessary to support the college curriculum and to provide resources that students, faculty, and staff need to serve effectively in their ministries and to grow spiritually.” Located on the bottom floor of the college’s main building, the library offers services for about 40 hours each week during the academic year. Library hours vary from semester to semester; they are posted at the library’s entrance and are emailed to students each semester. If a student needs to use the library at a time when it is not open, the student may contact the librarian for an appointment to use the library after hours.

The library specializes in the areas of Biblical studies, theology, and Christian ministries (including Christian education and pastoral care). Currently the Library owns about 10,000 books. Books are organized according to the Library of Congress classification system. Library holdings may be accessed on any computer in the computer lab or around the world at the college website www.carolina.edu (click on the academic tab and library online databases page for the catalog and various resource links).

In addition to print books and periodicals, the library also maintains a number of e-books and periodicals in electronic form.

The library offers interlibrary loan (ILL) for materials that are not available in the library. Materials for research and study are borrowed from other libraries for use by patrons. Materials are obtained from libraries in Winston-Salem (WSSU, Wake Forest, Piedmont Baptist) and from hundreds of libraries through OCLC WorldCat. Students are invited to take advantage of this free service.

Students are encouraged to use the library and its wide array of services during their studies at Carolina Christian College. The library director presents information literacy classes regarding the use of websites and databases, as well as other library services regularly and upon request. Students may submit information queries to the library director in person, by email (librarian@carolina.edu), by phone (336-744-0900), or by snail mail. All student inquiries are welcome.

ADMISSIONS

ADMISSION PROCEDURES

Admission to Carolina Christian College is a privilege granted to those who demonstrate a Christ-like attitude in their lives and a serious intention to dedicate themselves to achieving maturity in Christ. The College reserves the right to deny admission to any person lacking these characteristics.

WHEN TO APPLY

An application for admission must be received 4 weeks before classes begin, but all necessary information must arrive at least two weeks before the date of registration including Financial Aid award letter. Registration will be delayed until an application is evaluated and processed.

HOW TO APPLY

Certificate

Undergraduate

Graduate

Post-Graduate

1. A completed Application Form, accompanied by the \$50.00 application fee, should be sent to the College. This form is available online at www.carolina.edu. The certificate program does not have an application fee, but it assesses an administrative fee of \$10.00.
2. Two (2) personal letters of recommendation one should be from your pastor or church leader for undergraduate applicants.
3. Official transcripts of all credits earned in high school and/or in any schools of higher learning (Junior College, College, or University) must be sent to the Registrar as soon as possible after the time of application. Official transcripts of all post-baccalaureate learning institutions (if applicable).
4. For undergraduate admission, a high school diploma or its equivalent is required. A minimum of a 2.0 GPA is required. (Students that fail to meet the minimum requirement can petition the admissions committee for provisional acceptance)
5. For admission to the doctoral program, a graduate-level degree from a recognized Department of Education accrediting body is required.
6. The admission-testing program must be completed before the end of the first semester. Carolina Christian College administer admission tests. This is not required for admission but is a part of the new student orientation.
7. All admission requirements must be completed before the student can enroll as a degree-seeking student.

ADMISSION REQUIREMENTS

These requirements are for all CCC campuses.

To be admitted to the **Certificate** program, the applicant must meet the following requirements:

1. Submit Application Form.
2. Make payment of the nonrefundable \$10 Administrative Fee.

To be admitted to the **Undergraduate** program, the applicant must meet the following requirements:

1. Submit Application Form with 2 Letters of Reference.
2. Make payment of the nonrefundable \$50 Application Fee.
3. Arrange to have official transcript(s) sent directly to CCC in sealed envelopes from all institutions previously attended.
4. Proof of high school equivalency must be submitted.
5. 2.0 High school GPA required.

To be admitted to the **Master's** program, the applicant must meet the following requirements:

1. Submit application.
2. Grade of B or better in upper-level baccalaureate work.
3. Submit a statement of faith.
4. Provide proof of active ministry involvement (reference letter, ministerial license, or ordination).
5. Make payment of the non-refundable \$50 application fee.
6. Arrange to have official college transcripts sent to CCC in a sealed envelope.

To be admitted to **Doctorate** program, the applicant must meet the following requirements:

1. Submit application.
2. Cumulative G.P.A. of 3.0 or better at post baccalaureate level.
3. Submit a 900-word autobiographical essay.
4. Submit a resume.
5. 2 letters of recommendation.
6. Make payment of the non-refundable \$50 application fee.
7. Arrange to have official graduate-level college transcripts sent to CCC.

Any applicant not meeting the above-stated requirements may petition the Admissions Committee for consideration.

APPLICATION PROCESS

1. Application for Admission
 - Complete the Application Form.
 - Submit \$50 nonrefundable Application Fee or \$10 Administrative fee.
2. Official Transcripts
 - Send a Request for Official Transcripts from your high school and to each college or university previously attended.
 - Send the appropriate transcript fee to the respective institutions. (Check with the registrar from each institution for the actual fee amount BEFORE mailing transcript request.)
3. Financial Aid
 - If needed, apply for Financial Assistance in the College Financial Aid Office at least six weeks prior to enrollment.
 - Call to schedule an appointment with the Financial Aid Director at (336) 744-0900 if needed.
 - CCC holds FAFSA day in the Spring of each term to provide group assistance in completing the FAFSA.

ACADEMIC POLICIES

ACCEPTANCE OF TRANSFER CREDITS

If you wish to transfer work from another acceptable institution, you must comply with these requirements:

1. Not more than 74 semester hours may be transferred. (Applies to undergraduate) No more than 30 semester hours may be transferred for students enrolled in the master level program. No more than 15 semester hours may be transferred for students enrolled in doctorate program.
2. You are responsible for arranging for an official transcript of credits to be transferred. Such transcripts should be sent to Carolina Christian College by the institution from which the credit is being transferred before you register for courses.
3. Evaluation of credits from all other institutions is based upon standard views by the American Association of Registrars and Admission Officers.
4. We accept credits from schools accredited by CHEA, The United States Department of Education, or a comparable foreign accrediting body.
5. We accept credits from unaccredited schools on a case-by-case basis.

RE-ADMISSION

Any student who has previously attended CCC, but has not attended during the prior semester, or who withdrew from CCC before completing the prior semester is required to file an application for re-admission with the Admission Committee.

In the case where an applicant was granted admission, but did not attend, the applicant need only write a letter to the Admission Committee, giving the date desired to report for registration.

A student dismissed from CCC may reapply after one full semester. A student who formally withdrew may apply for re-admission before the beginning of the next scheduled semester or summer session.

To be re-admitted, the student must complete the following requirements:

1. Submit a new application with a nonrefundable \$250.00 readmission fee.
2. Submit an additional statement detailing reasons for withdrawal and reasons for seeking re-admission at this time, as well as describing Christian activities and employment undertaken since withdrawal.

PROVISIONAL ENROLLMENT

A student whose previous grades and/or entrance test results are too low may be accepted for enrollment on a provisional basis. The conditions may be that of limited course work and/or academic probation. This depends on the deficiency shown in grades and/or scores. In some situations, a student may be required to enroll for one or more developmental courses prior to taking regular freshman subjects.

PRIOR LEARNING

Prior learning skills obtained not a traditional educational program will be assessed on a case-by-case basis. When awarding credit, the College is looking for classroom hours (face-to-face or online), subject matter, depth of knowledge, and rigor.

ACCOMMODATIONS FOR STUDENTS WITH DISABILITIES

The policy and intent of Carolina Christian College is to fully and completely comply with the Americans with Disabilities Act of 1990 (ADA), the Rehabilitation Act of 1973, and the Americans with Disabilities Amendments Act of 2008, to the extent that they apply to the college. Carolina Christian College will not discriminate against an otherwise qualified student with a disability in the admissions process, or any academic activity or program, including student-oriented services. CCC will provide reasonable accommodations to the known physical and/or mental limitations of a qualified individual with a disability, unless it would impose an undue hardship on the operation of the college, or it would fundamentally alter a degree or course requirement. Qualified students must request reasonable accommodations for disabilities through the Dean of Students.

VETERAN STUDENT

Veterans interested in pursuing Carolina Christian College degrees must contact their local Department of Veterans Affairs office for information about how to obtain financial support for their education. Veterans should also notify the Registrar's Office of their intent to pursue financial support from the Department of Veterans Affairs and provide CCC with their DD-214. Sources of educational support include:

- The Montgomery GI Bill (Chapter 30)
- VA Vocational Rehabilitation (Chapter 31)
- Survivors and Dependents Educational Assistance Program (Chapter 35)
- Montgomery GI Bill for Reserve Component/National Guard Members (Chapter 1606)
- The Post 911 GI Bill.

Additional information is available at the Department of Veterans Affairs' website (www.gibill.va.gov). Official copies of form DD214 and Letter of Eligibility must be on file in the Registrar's Office. Also, copies of additional military experience and training (not included on form DD214) must be submitted to the Registrar for evaluation of academic credit, using the *Guide to the Evaluation of Educational Experiences in the Armed Services* (American Council on Education). A Letter of Eligibility must also be on file in the Registrar's Office.

HONOR CODE OF CONDUCT

CCC provides an environment where its students may give themselves to academic pursuits and time develop a Christ-like character. This can best be accomplished when all students feel a sincere responsibility for the welfare of each other and for the group as a whole. The guiding principles by which campus regulations are established are based upon the Word of God, and then upon the expectations of social law, constituents, and the community. The official Honor Code is provided to all students at orientation.

RETURN TITLE IV FUNDS

- The calculation of the return of Title IV Funds is determined by the date that the student withdraws, which is:
 - The date the student officially notified the institution of intent to withdraw.
 - The student's last date of attendance at a documented academically related activity.
 - Title IV aid and all other aid is earned during the time a student is attending Carolina Christian College.
- The percentage of aid earned is determined by dividing the number of days a student was enrolled by the number of days in the semester, up to the 60% point.
- Return of Title IV Funds is no longer necessary after that point.

If the student withdraws from all courses after the 60% point in the semester, Title IV aid is viewed as 100% earned. However, if a student withdraws prior to that 60% point, the student may owe part of the financial aid if the financial aid office determines the student has received an amount larger than the earned amount.

DISCIPLINARY ACTION

Carolina Christian College provides an environment where its students may give themselves to academic pursuits and at the same time develop a Christ-like character. This can best be accomplished when all students feel a sincere responsibility for the welfare of each other and for the group as a whole. Certain standards of conduct as well as general information needed by the student during his/her career at CCC are outlined in the Student Handbook, Athletic Handbook, and Honor Code which is distributed to each new student at orientation.

The guiding principles by which campus regulations are established are based first upon the Word of God, and then upon the expectations of social law, constituents, and the community.

The College reserves the right to suspend or dismiss any student, when in the judgment of the college authorities, such action is for the good of the institution. Let it be understood that attendance at CCC is a privilege, not a right, and that this privilege may be withdrawn in the following circumstances:

1. The student is antagonistic to the Administration, its purpose and ideals, his fellow students, or regulations of the college.
2. The student is unwilling or unable to adjust himself to the College environment.

A student who is dismissed will be considered absent from all classes until the end of the term, and a “0” grade recorded for each absence. His grade in the course will be whatever grade results.

A dismissed student may ask to be considered for re-admittance to the College after one semester. The Admissions Committee must approve his/her re-admittance.

REGISTRATION

Each student receives personal attention in planning a course of study. Undergraduate hours of 12 credits per semester are considered a normal load. More than 15 hours may be carried only by special written permission from the VP of Academics. Graduate students are classified as full time if they enroll in 9 semester hours. Post-graduate students are classified as full time if they enroll in 5 semester hours. More than 9 hours may be carried with approval from the Dean of Graduate Studies for graduate level program only. No more than 6 hours will be allowed for postgraduate students.

Each student must be registered before attending classes. The enrollment dates are provided online at www.carolina.edu or at the Front Office. The tuition and other fees are payable in advance unless prior arrangements have been made. Each student by the act of registration assumes the liability for the payment of all charges for the semester. The following are steps required for all students for registration at Carolina Christian College:

1. Register for (select) courses in Carolina Connect, located on the Resource Page, and submit to Registrar’s office.
2. Consultation with an Advisor will be conducted if the advisor determines conflicts or issues with the classes that a student has chosen.
3. FAFSA completion each year in October.
4. CORE (financial aid award package request) is to be completed in March of each year).
5. Cash paying students are required to put down 10% of the tuition cost at the time of registration.

CHANGES IN REGISTRATION AND WITHDRAWAL

During the first two weeks of any class, in any semester, the student has the privilege of making an approved change of schedule. During this time period, the student may drop or add classes following the registration process.

The last day to add or drop a class will be two weeks after classes have begun.

A student is not excused from attending a course he wishes to discontinue until he has completed the “drop” process in the online registration module. No course may be discontinued after the last day on which a drop is permitted. After that date, any failure to be in class is considered an absence, except in that case of extenuating circumstances. At the discretion of the instructor, under such circumstances the student may be assigned a grade of “I.” See the Incomplete Work policy regarding the time allotted to complete course requirements for the “I.” The student may enroll in the class a second time during the following semester in an effort to earn credit.

In order to withdraw from the College, the student must complete the withdrawal form available in the Registrar’s office. The student must also complete an exit interview with the Dean of Students. If a student has an “I” at the time of withdrawal from the College, the student forfeits the opportunity to complete the outstanding assignments, and the “I” will revert to an F.

SATISFACTORY ACADEMIC PROGRESSION

The standards for Satisfactory Academic Progression (SAP) at Carolina Christian College apply to all students (both those receiving financial aid and cash-paying students). Students at Carolina Christian College are expected to maintain satisfactory academic progress and to make ongoing progress toward graduation. Carolina Christian College’s Undergraduate and Graduate Satisfactory Academic Progression Policy addresses students’ ability to progress towards completion of their degree within the maximum timeframe allowed (150% of the number of credits required for the program) and students’ eligibility for Title IV funds.

There are two standards that must be met in order to meet SAP: a qualitative standard (GPA) and a quantitative standard (PACE). These progress standards are measured at the end of the Fall and Spring semesters.

Undergraduate Satisfactory Academic Progress Policy

The qualitative standard requires students to achieve a minimum cumulative Grade Point Average (CGPA) of 1.7 after completing the first semester at Carolina Christian College, and a 2.0 CGPA for each semester thereafter. If a student retakes a course due to a failing grade on the first attempt, only the passing grade will be counted towards the CGPA. If the resulting grade for retaking the course is also a failing grade, only one failing grade will be included in the calculation of the CGPA.

The quantitative standard (ROP) requires that students complete their program of study within 150% of the normal timeframe allotted for completion of the program. The normal timeframe is measured in credit hours attempted. Credit hours attempted include courses with a grade of “INC” (incompletes), “W” (withdrawals), “WF” (withdrawal/failures), “R” (repeats), and “Fs.” Transfer credit hours that meet degree requirements are included in the calculation of PACE and maximum time frame, although not in the calculation of grade point average.

In order to ensure completion of a program within the maximum timeframe, students must successfully complete 66.67% of the cumulative credits attempted after completing each semester. All attempted credits are factored into the semesterly ROP evaluation, including credits for a course from which the student withdrew after the add/drop period, and excluding credits for remedial courses, such as EN101. If a student withdraws from a course after the add/drop period and only has attendance for the course within the first 50% of the course, the final grade assigned will be a W and will not affect the qualitative (GPA) progress.

If a student withdraws from a course after the add/drop period and has attendance for the course beyond the first 50% of the course, the final grade assigned will be a WF and will affect both the qualitative (GPA) and quantitative (ROP) progress in the same way as an F. Should a student earn an F or receive a WF in a course and pass the course in a subsequent attempt, the failing attempt will continue to count towards the quantitative progress, but only the passing grade will count in the qualitative (GPA) progress.

A student who does not meet either or both the qualitative and quantitative benchmarks at the end of a semester will be placed on Academic Warning (AW) for the following semester.

A student on AW who meets the SAP requirements at the end of the semester is removed from AW, and a student not meeting the SAP requirements at the end of the semester will be dismissed from Carolina Christian College. To avoid dismissal the student may submit a written appeal, which must include the reason for failing to make satisfactory progress. Reasons for appeal include the student's own injury or illness, serious illness of a dependent, death of a relative, or other special circumstance. The appeal must also include what has changed in the student's situation that will result in satisfactory progress if the appeal is granted. The dean of academics will evaluate the student's progress and determine if it is mathematically possible to complete the program within 150% time, with a minimum 2.0 CGPA. If it is not possible, the student will be notified and dismissed from the College. Otherwise, the dean will develop a student Action Plan for achieving satisfactory academic progress within one semester and will present the student appeal and the plan to the college's Committee for Appeals. If the Committee for Appeals approves the plan, the appeal will be granted, and the student will be placed on Academic Probation (AP). While on AP, the student continues to be eligible for Title IV funding, as long as the student is meeting the terms of the action plan. If the student is not meeting the plan requirements, financial aid will be terminated, and the student will be dismissed from Carolina Christian College.

A student on AW or AP who voluntarily withdraws from the University, or ceases attending will not be eligible for Title IV funding when and if the student applies to re-enter.

A student who has been dismissed from Carolina Christian College may return to the college after being out for one full semester. A student who is readmitted after dismissal for failure to meet the SAP standards is readmitted on Academic Suspension (AS) and is not eligible for Title IV funds until the student has achieved a 2.0 CGPA and/or the required 66.67% ROP at the end of the returning semester. Therefore, should funding be required, re-enrolling students must establish alternative financing. To be readmitted, the student must submit a formal written statement advising why he or she did not meet the SAP requirements and what has changed that will result in the student meeting the requirements. The academic dean will complete an action plan with the student detailing what the student must do to be in compliance with the SAP requirements within the specified timeframe. If the student does not meet the SAP requirements at the end of the returning semester, or timeline specified in the action plan, the student will be dismissed for a final time from the College.

The CGPA continues throughout a student's undergraduate tenure at Carolina Christian College. When a student transfers from one minor to another, the student's current CGPA will transfer to the new minor and the final calculation will include all courses taken at Carolina Christian College; however, the student's quantitative SAP will be calculated based on credits attempted and earned in the new minor, as well as all credits attempted and earned in the former minor that are also applicable to the new minor. All applicable transfer credits are also included in the ROP and maximum time frame calculations.

***** When determining Satisfactory Progress, remedial courses MUST be included when calculating the student's qualitative SAP (CGPA) but NOT for quantitative ROP. Incomplete grades ("INC") are not factored into the student grade point average, however, any incomplete grade carried at the end of the student's Satisfactory Academic Progress (SAP) evaluation period (semester) will be factored as a failing grade when determining the student's academic progress, status, and continued Title IV eligibility.

Graduate Satisfactory Academic Progress

A graduate student at Carolina Christian College is required to earn a minimum of a B in each graduate course. Earning a final grade below a B will require the student to retake the course and puts the student in danger of being placed on a warning status or being dismissed if the Cumulative GPA is below 3.0. If a student retakes a course, only the higher grade will be counted towards the CGPA. If the resulting grade for retaking the course is also a failing grade, only one failing grade will be included in the calculation of the CGPA. The course completion rate requires students to complete their program of study within 150% of the normal timeframe allotted for completion of the program. Transfer credit hours that meet degree requirements are considered in the determination of this 150% normal time frame, although not in computation of grade point average. The normal timeframe is measured in credit hours attempted rather than semesters.

In order to ensure completion of a program within the maximum timeframe, Carolina Christian College requires that a student successfully complete 66.67% of credit hours attempted after completing his/her first semester at Carolina Christian College and each semester thereafter. Credit hours attempted include courses with a grade of "INC" (incompletes), "W" (withdrawals), "WF" (withdrawal/failures), "R" (repeats), and "Fs." All students must have completed a minimum of 66.67% of credit hours attempted in order to graduate within 150% of the normal timeframe.

When determining Satisfactory Academic Progress (SAP) the cumulative grade point average and the course completion rate (ROP) are determined independently of each other and a student may be placed on Academic Warning (AW) or Academic Probation (AP) for either cumulative grade point average (CGPA), course completion rate (ROP), or both at the end of the semester. In the event a student does not achieve a 3.0 or greater GPA at the end of a semester, or earn 66.67% of the cumulative credits attempted, the student will be placed on AW. A student on AW who meets the SAP requirements at the end of the semester is removed from AW. While on AW, a student not earning a 3.0 CGPA or 66.67% of the attempted credits by the end of the semester is dismissed from Carolina Christian College. To avoid dismissal the student may submit a written appeal requesting to be placed on AP and, if approved, continues to be eligible for Title IV funding.

A student who is readmitted after dismissal for failure to meet the SAP standards is readmitted on Academic Suspension (AS) and is not eligible for Title IV funds until the student has achieved a 3.0 CGPA or the required 66.67% ROP at the end of the returning semester. In order to return from Academic Dismissal, the student must submit a formal letter explaining the reason he or she did not meet satisfactory progress and the change in circumstances that will allow the student to meet satisfactory progress. The academic dean will review the student's progress to ensure that he or she will be able to complete the program in the 150% timeframe. The academic dean will also complete an action plan with the student that details what the student must accomplish to reach the required 3.0 GPA and 66.67% ROP within a specified timeframe (typically one semester but no more than two semesters). If the student fails to meet the requirements of the action plan or fails to meet the SAP requirements in the specified timeframe, the student will be academically dismissed from Carolina Christian College for a final time.

The CGPA continues throughout a student's tenure at Carolina Christian College. When a student transfers from one minor to another within a degree level, the student's current CGPA will transfer to the new minor and the final calculation will include all courses taken at that degree level at Carolina Christian College and those courses that meet the program requirements that were transferred to Carolina Christian College.

A student who has been dismissed may reapply to Carolina Christian College after remaining out of school for one full semester. At that time, a student's academic records are evaluated to determine if it is possible for a 3.0 CGPA to be achieved and if the program can be completed within the maximum 150% timeframe. If both these standards can be achieved, a student may be readmitted on Academic Suspension (AS) but is not eligible for Title IV funds until the student achieves satisfactory academic progress. Therefore, should

funding be required, re-enrolling students must establish alternative financing.

***** Incomplete grades (“INC”) are not factored into the student grade point average, however, any incomplete grade carried at the end of the student’s Satisfactory Academic Progress (SAP) evaluation period (semester) will be factored as a failing grade when determining the student’s academic progress, status, and continued Title IV eligibility.

CLASS ATTENDANCE

The privilege of being a student at Carolina Christian College is the result of the sacrifice of many people. The student is expected to be a good steward of this opportunity, which includes regular attendance at all class sessions. The following policy applies to all classes:

1. There are no class “cuts.”
2. Excuse of absence is at the discretion of the professor.
3. The professor is permitted to make any assignment of makeup work or penalties for work not submitted.
4. When a student has four unexcused absences, he/she is required to meet with the VP of Academics and discuss the problem.
5. Once the student receives a warning by the VP of Academics, should the student miss a class for the same class session, he/she will be placed on academic probation.
6. Students are required to submit weekly assignments and/or engage in academic discussion to verify attendance weekly in a hybrid/online class.
7. If the student does not meet the attendance requirement for that semester/session, this student will be dismissed on the basis of non-satisfaction of academic progression.
8. There are NO exceptions to this policy for any reason. Those receiving DVA benefits must adhere to attendance policies or must otherwise forfeit their DVA benefits and the DVA will be notified upon dismissal.

UNDERGRADUATE & GRADUATE PROGRAM ATTENDANCE POLICY

The student is required to attend all class sessions because of the importance of the collaborative learning atmosphere. It is recognized that from time to time the students will have to miss a class session because of such matters as illness, court appearance, job requirement, important church involvement, or a serious family matter.

1. In the event that a student knows in advance that he/she will be absent because of an extenuating circumstance, the student must seek to arrange an alternative assignment with the instructor.
2. The instructor, at his/her discretion, may be willing to give an alternative assignment that will take a minimum of class time missed.
3. The grade for that assignment will then become the class participation grade for the class session that the student has not attended.
4. After four unexcused absences, the student will be required to meet with the VP of Academics to discuss the problem.
5. Once the student receives a warning by the VP of Academics, should the student be absent to one more class of the same class session, this student will be placed on academic probation.
6. By missing class and not completing a makeup assignment, the student will lose the grade for class participation.
7. If the student does not meet the attendance requirement for that semester, this student will be dismissed on the basis of non-satisfaction of academic progression.
8. Faculty addendum to the policy due to COVID 19 adjustments:
 - Attendance is required in any virtual setting as defined with cameras on and student face shown as student engages through communication during lecture.
 - No engagement in virtual classroom over first 2-weeks of a course equates to automatic withdrawal failing recorded on transcript.

POST-GRADUATE PROGRAM ATTENDANCE POLICY

The nature of this program does not allow for any absences during the week of intensives. If a student misses one day of intensives, s/he must repeat the course.

INCOMPLETE WORK

If a student is unable to complete his work in a course at the end of a semester because of personal illness, illness, or death in his/her family, he/she may receive a grade "I" (incomplete). The VP of Academics must approve all Incompletes. The student's work must be completed within one semester after the close of the semester in which the "I" is received. Incompletes not made up within this period of time automatically are changed to an F. A student who withdraws from the institution with an "I" forfeits the opportunity to complete the course, and the "I" is automatically converted to an F.

REPEATING A COURSE

When a student elects to repeat a course, only the grade received for the repeat will be counted in the computation of his grade point average. The student is not allowed to repeat a course more than twice. Only courses for which a grade of below "C" has been received may be repeated.

CLASSIFICATION

At the beginning of each semester, students are classified according to semester hours completed, GPA, and accumulated quality points. Listed in this section are the four basic student classifications with the minimum acceptable academic standards. Classifications of students in all official publications are based upon the following criteria.

Classification	Semester Hours Completed
Undergraduate	
Freshman	1-27
Sophomore	28-59
Junior	60-91
Senior	92+
Graduate	
First-year	1-18
Second-year	19-36
Third-year	37-57
Post-graduate	
First-year	1-10
Second-year	11-20
Third-year	21-30
Fourth-year	31-41

Other recognized classifications are:

1. **Audit** – A student enrolled for a course for personal improvement and/or greater usefulness in the local church, pays reduced fees, and receives no college credit. This student **may not transfer** from audit to credit or vice versa except during the first two weeks of the semester with the permission of the instructor and VP of Academics.

DEAN'S LIST

Eligibility is based upon a student's carrying a full load of twelve or more hours with a cumulative grade point average of 3.50 or higher. This will be published annually, thus giving special recognition to those who excel.

HONORS

Honors at graduation are granted on the following basis only for undergraduates:

<i>Cum Laude</i>	3.35 grade point average
<i>Magna Cum Laude</i>	3.75 grade point average
<i>Summa Cum Laude</i>	4.00 grade point average

EDUCATIONAL RIGHTS AND PRIVACY

Carolina Christian College abides by the regulations of the Buckley Amendment by keeping all information on a registered student confidential. When any information is released, it is with the student's written consent. However, when a student registers, giving necessary information for college effectiveness, that information, such as address, telephone numbers, etc., is used where needed for effective campus life. (The student directory and the school annual reports are examples of these uses.) No information is given for off-campus use unless it is for the health and safety of the student.

Grievance Procedure

At Carolina Christian College the Dean of Students acts as an intermediary to help students resolve disputes, problems, grievances, disagreements, appeals to the administration, and exceptions to college policies.

Before contacting the Dean of Students, we expect the student to first try addressing your concern at the classroom-level. If after speaking with the professor or individual, you still feel that an official is needed in finding a resolution, we are available to help with your concerns.

Student/Individual Disputes and Appeals

The Dean of Students takes every faculty/student/staff issue on a case-by-case basis. This means that we do not take sides. We gather information from both parties to make sure we have all the information we need. This helps us to take a fresh look at your concern while providing the best possible resolution.

While the Dean looks at each issue uniquely, you will be notified of a resolution within fourteen (14) days, most being resolved within only one (1) week. To expedite this process:

- Make sure that you have tried to address your concern with the faculty member or individual first.
- Have all related documents ready to submit.
- Contact the Dean of Students by phone at (336) 744-0900 or send an email, and he or she will gather all available information from both parties and the faculty member or individual to ensure a quick and fair resolution.
- If further attention is necessary, you may contact the VP of Academics for assistance; and he or she will gather all available information from all parties and ensure a quick and fair resolution.
- If further action is required, the President has the authority and responsibility for final action. If the President must resolve the issue, the faculty member and student will be notified of his or her decision within seven (7) days from the date of disclosure to the President by the student or faculty member.
- The President will close the matter and suggest the parties interact with a second party until both parties feel comfortable.
- Students have a right to make a formal complaint to one of the entities below if they feel that it is needed to resolve an issue.
- If the issue is not resolved the student can file a formal complaint with the Association of Biblical Higher Education and/or the State of North Carolina General Administration.

Student Complaints: The State Authorization Unit of the University of North Carolina System Office serves
Carolina Christian College

as the official state entity to receive complaints concerning post-secondary institutions that are authorized to operate in North Carolina. If students are unable to resolve a complaint through the institution's grievance procedures, they may review the [Student Complaint Policy \(PDF\)](#) and submit their complaint using the online complaint form at <https://studentcomplaints.northcarolina.edu/form>.

For more information, contact:
North Carolina Post-Secondary Education Complaints
223 S. West Street, Suite 1800
Raleigh, NC 27603
(919) 962-4550

To file a complaint with the Consumer Protection Division of the North Carolina Department of Justice, please visit The State Attorney General's web page at: <http://www.ncdoj.gov/complaint>. North Carolina residents may call (877) 566-7226. Outside of North Carolina, please call (919) 716-6000. En Espanol (919) 716-0058. If you choose to mail a complaint, please use the following address:

Consumer Protection Division
Attorney General's Office
Mail Service Center 9001
Raleigh, NC 27699-9001

If students choose to file a complaint with the Association of Biblical Higher Education, the policy is located at www.abhe.org. Complaints and supporting documentation must be submitted in writing to the Director, Commission on Accreditation via email at coa@abhe.org or postal mail at 5850 T.G. Lee Blvd., Suite 130, Orlando, FL 32822.

Complaints will be processed by the Commission on Accreditation staff in accordance with the Policy on Complaints Against an Institution or Accredited Program.

REQUIREMENTS FOR GRADUATION

To graduate with a **Doctor of Ministry** degree the student must complete:

1. 37 semester hours acceptable to Carolina Christian College with a cumulative grade point average of 3.0 or better. The 37-semester hour requirement must be met by the following category of semester hours:
 - a. Complete the 25 semester hours in core classes.
 - b. Complete 6 semester hours in dissertation research.
 - c. Complete 6 hours in electives.
2. Satisfy all financial obligations to the College and be in good standing with the College.
3. Successfully complete exit examinations.
4. Exemplify Christian character, attested to by the recommendation of the faculty and the approval of the Board of Directors of CCC.
5. Complete exit counseling interview

To graduate with a **Master of Religious Education** degree the student must complete:

1. 57-semester hours acceptable to Carolina Christian College with a cumulative GPA of 3.0 or better. The 57-semester hour requirement must be met by the following category of semester hours:
 - a. Complete the 30 semester hours in core classes.
 - b. Complete 21 semester hours in specialization.
 - c. Complete 6 hours in electives.
2. Satisfy all financial obligations to the College and be in good standing with the College.

3. Successfully complete exit examinations.
4. Exemplify Christian character, attested to by the recommendation of the faculty and the approval of the Board of Directors of CCC.
5. Complete exit counseling interview.

To graduate with a **Bachelor of Arts** degree the student must complete:

1. 120 semester hours acceptable to Carolina Christian College with a cumulative grade point average of 2.0 or better. The 120-semester hour requirement must be met by the following category of semester hours:
 - a. Complete the 22 required hours in minor courses with a 2.0 grade for all the courses.
 - b. Complete the 36 semester hours in General Education which must include:
 - English Composition 6 Hours
 - Speech 3 Hours
 - Social Sciences 9 Hours
 - Humanities 9 Hours
 - Science and/or Mathematics 3 Hours
 - c. Complete 33 semester hours in Biblical Studies.
 - d. Complete 9 hours in Ministry.
2. Satisfy all financial obligations to the College and be in good standing with the College.
3. Successfully complete exit examinations.
4. Exemplify Christian character, attested to by the recommendation of the faculty and the approval of the Board of Directors of CCC.
5. Complete exit counseling interview.

To graduate with an **Associate of Arts** degree the student must complete:

1. 60 semester hours of courses which must include:
 - a. English Composition 6 hours
 - b. Speech 3 hours
 - c. Social Sciences 9 hours
 - d. Humanities 9 hours
 - e. Science/Mathematics 3 hours
2. 24 semester hours of electives.
3. Complete exit counseling interview.

To graduate with a **Certificate of Biblical Studies** designation the student must complete 30 semester hours in the following disciplines:

- a. Bible 12 hours
- b. History 3 hours
- c. Minor 6 hours
- e. Electives 9 hours

COURSE EVALUATION CRITERIA

- “A” indicates distinctly superior work, a high degree of initiative, freedom from error, attainment of the insights, along with punctual and regular attendance,
- “B” indicates considerable insight, understanding and thoroughness, coupled with faithful attendance,
- “C” indicates satisfactory work but without distinction, tending to be mechanical,
- “D” indicates work below average and less than satisfactory but receiving credit,
- “F” indicates work that is entirely unsatisfactory for which no credit is given
- “+/-“ INDICATES additional strength or weakness within an area, but not enough to

change a level grade

- Undergrad: 10 pages total (facts) – discussion 250-word count
- Graduate: 20 pages total (theory) – discussion questions 300-word count
- Doctoral: 30 pages total (creating knowledge) – discussion questions – 350-word count

GPA POINTS SYSTEM

The system of grades and point values used by the College is as follows:

Letter Grade	Ten-point scale %	GPA
A	93 – 100%	4.0
A-	90 – 92.99%	3.7
B+	87 – 89.99%	3.3
B	83 – 86.99%	3.0
B-	80 – 82.99%	2.7
C+	77 – 79.99%	2.3
C	73 – 76.99%	2.0
C-	70 – 72.99%	1.7
D +	67 – 69.99%	1.3
D	63 – 66.99%	1.0
D-	60 – 62.99%	0.7
F	0 – 59.99%	0.0
“R”	REPEATED COURSE	
INC	INCOMPLETE	
W	WITHDRAWAL DURING FIRST 50% OF COURSE	
WF	WITHDRAWAL DURING SECOND 50% OF COURSE	
WNA	WITHDRAWAL FROM COURSE WITHOUT ATTENDING	
AW	ACADEMIC WARNING	
AP	ACADEMIC PROBATION	
AS	ACADEMIC SUSPENSION	

A student who feels an error has been made in the calculating or recording of a grade has thirty days to make an appeal. Such an appeal should be in writing, giving evidence for the believed error. Duplicate copies should be submitted to the course instructor and Registrar no later than thirty days after the grades were posted.

GRADE REPORTS

Students can access grades from the Registrar. These grades will be added to your transcript. If you should decide to transfer to another institution, you must pay a \$10.00 transcript fee and complete the transcript request form, so the registrar send a copy of your transcript to that institution. The transcript request form is located on the school’s website in the Registration and Withdrawal section under the Admissions tab.

EXAMINATION

The last week of each semester will be devoted to examinations. A student who does not take an examination at the regularly scheduled time will be charged a fee of \$30.00 for the privilege of taking each examination at another time. The instructor and VP of Academics must approve the time set to take the exam. The examination must be taken within ten calendar days after the close of the semester.

EVALUATION OF GRADUATES

The graduates of CCC have historically maintained a commitment to various types of ministries. Throughout the history of the College, about 85% of the graduates have stayed in the ministry.

In order to maintain current information regarding its alumni, the College regularly surveys its alumni. This evaluation process involves annual surveys of various segments of the alumni. These surveys provide information regarding the alumni's area of Christian service, attitude toward the College and the education they received at CCC, as well as his/her future plans and his/her ministry.

INSTITUTIONAL RESEARCH

In compliance with the Student Right to Know Act, the following graduation rate, retention rate, and transfer out rates for the cohorts below includes all students enrolled in any degree program.

Retention Rate (Includes all degree-seeking undergraduate students):

2022 – 45.33%

2021 – 48%

2020 – 40%

2019 – 30%

2018 – 79%

2017 – 69%

Graduation/Transfer Out Rate:

As of the 2022 reporting year, the Completion and Transfer Out rates will be reported together. The Graduation/Completion and Transfer Out Rates are calculated based on the number of students who attended college for the first time in the Fall semester 6 years prior to the reporting year. For the Graduation Rate, the institution looks at the number of students who graduated from their program within 150% of the published time. For the Transfer Out Rate, the institution looks at the number of students in that group who did not graduate from the program but transferred to another institution or program.

2023 – 27.27%

2022 – No first time in college students enrolled in Fall of 2016

Completion/Graduation Rate (pre-2022):

2021 – 100%

2020 – 35%

2019 – 67%

2018 – 79%

Transfer Out (pre-2022)

2021 – No data available

2020- 3%

2019- 16%

2018 – 14%

Full-time Ministry

2023 Alumni – 58%

2022 Alumni – 58%

2021 Alumni – No data available

2020 Alumni – No data available

2019 Alumni – 68%

2017 Alumni -64%

Active Ministry

2022 – 48%

2020 – 55%

2019 – 49%

2017 – 77%

Overall Satisfaction 4.5 stars out of 5 stars

FULL-TIME CORE FACULTY MEMBERS

T. Tyrone Tyson, D. Min.
Payne Theological Seminary
Concentration: Preaching

William Linsley, D.Min.
John Wesley University

ADJUNCT FACULTY

William Greenwood, D. Min.
M.A. Southeastern Baptist Theological Seminary
Retired Pastor

Derrick Thorpe, D. Min.
United Theological Seminary

Grace Greenwood, Ed.D
Florida International University

Keith Vereen, D. Min.
John Wesley University

Sarah Taylor, M.L.S.
North Carolina State University

Kevin Weigel, M.A
Northeastern Seminary

Natasha Young, M.A.
Liberty University

Doris Jones, M.A.
Winston Salem State University

Qiana Daniels, M.Div.
Virginia University of Lynchburg

FINANCIAL INFORMATION

GENERAL INFORMATION

Carolina Christian College is supported by the contributions of congregations and individuals from around the United States. Without their generous support it would be impossible for the College to provide students with quality ministerial education.

Carolina Christian College does not want to turn students away due to lack funds for cover educational costs. However, the College has only limited scholarship funds available, and it expects the student to do everything possible to provide for his/her needs before requesting special assistance. Although most of our students work to secure funds to finance their education, we assist those who may have special needs. Each student is expected to assume his financial obligations in a conscientious manner.

Tuition and fees are due at the beginning of the semester. All tuition for part-time students must be paid at registration. Deferred payments may be arranged for full-time students with a minimum of 10% paid at registration and the balance in monthly installments.

No final examination may be taken until accounts are made current. No degree or diploma will be granted, or transcript issued until all financial obligations have been satisfactorily discharged.

The College seeks to maintain all student charges at as low a level as possible. However, if future requirements necessitate cost adjustments, the College reserves the right to change fees, modify services, or change its programs without notice.

GENERAL FEE SCHEDULE

ALL SITES

Administrative Fee (certificate)	\$ 15.00
Application Fee (one time)	\$ 50.00
Audit per class (A.C.T.)	\$ 65.00
Drop/Add Fee (per class)	\$ 30.00
Facility Fee (per semester)	\$ 80.00
Late Exam Fee	\$ 30.00
Late Registration Fee	\$ 60.00
Library Fees (per semester)	\$ 200.00
Orientation Fee (new students only)	\$ 100.00
Overdue Library Book Fee (max)	\$ 10.00
Password Recovery Fee (per occurrence)	\$ 25.00
Registration Fee (per semester)	\$ 105.00
Reinstatement Fee	\$ 200.00
Return/Change RT4F/Program	\$ 200.00
Student Services (per semester)	\$ 85.00
Student IDs (per occurrence)	\$ 5.00
Technology Fee (per semester)	\$ 250.00
Transcript Fee	\$ 10.00

CERTIFICATE FEE SCHEDULE

Tuition per class	\$ 65.00
Books (average per year)	\$ 400.00
Graduation Fee	\$ 250.00

UNDERGRADUATE FEE SCHEDULE

Tuition/Book Bundle	\$ 7980.00 yr.
Student Fees	\$ 1900.00 yr.
Graduation Fee	\$ 250.00

GRADUATE FEE SCHEDULE

Tuition (Full-time)	\$ 10,000.00 yr.
Books (average per year)	\$ 800.00 yr.
Student Fees	\$ 1,900.00 yr.
Graduation Fee	\$ 350.00

POST-GRADUATE FEE SCHEDULE

Tuition (Full-time)	\$ 10,000.00 yr.
Books & Materials (average per year)	\$ 800.00 yr.
Student Fees	\$ 1,900.00 yr.
Graduation Fee	\$ 450.00 yr.

** All Fees Subject to Change and are non-refundable/transferrable excluding tuition (See withdrawal/RT4F policy)*

PARKING

Carolina Christian College does not charge a parking fee.

HEALTH INSURANCE

All students should carry their own private health insurance.

The College is not responsible for any charges for medical care.

PAYMENT PLANS AND DISCOUNTS

Deferred payments may be arranged with the Business Office. A minimum of 10% of the tuition must be paid by or at Registration with the balance being paid in monthly installments. A Promissory Note must be signed that states the dates and the amounts of the payments that are due.

A student will not be permitted to enroll in a subsequent semester if the cost of the previous semester is not completely paid. No degree or certificate will be granted, or transcript issued until all financial obligations have been satisfactorily discharged.

EMPLOYER TUITION REIMBURSEMENT

1. The student must provide the following to the Program Office:
 - a. A copy of the employer's Tuition Reimbursement Plan/Policy.
 - b. A letter from the employer stating when and how the tuition reimbursement payments will be made.
2. If the employer's plan calls for payment at the end of each course or at the end of the semester, the Business Office of the College must approve the plan. The College will provide the cost of tuition along with a notification of the student's successful completion of modular courses or a semester according to the employer's requirements for reimbursement. If the tuition reimbursement plan covers less than 100% of the tuition, the student will be required to pay at the beginning of each semester the portion of tuition not covered by the employer tuition reimbursement.
3. The student will be responsible for the payment of any portion of the tuition in the event the employer does not pay the agreed upon tuition reimbursement.

Employee Reimbursement Program. The student should contact his/her company's personnel office to investigate this source of financial assistance.

FINANCIAL AID

FINANCIAL AID OFFICE

Various forms of financial aid are made available. Contact the Financial Aid Director who will answer questions and help estimate eligibility for financial assistance. The Financial Aid Office may be reached during regular office hours (9:00 a.m. to 4:00 p.m., Monday through Thursday) or by appointment. Call (336) 744-0900.

To determine financial aid eligibility in a timely manner, the student must contact the Financial Aid Office at least SIX weeks prior to the beginning of a semester. Identify yourself as a student with questions about financial aid. The Free Application for Federal Student Aid (FAFSA) is available online at www.fafsa.ed.gov. **School code: 035703**

GRANTS AND LOANS

The awarding of Grants and loans depends upon a variety of factors, but primarily, the student's demonstrated financial need. Some of the most common forms of grant assistance are as follow:

Federal Pell Grant & Federal Supplemental Equal Opportunity Grant. The grants are non-repayable grants from the federal government to the student. To apply the student must fill out the Free Application for Federal Student Aid (FAFSA). Financial aid is based on income and other factors. The student must supply a copy of his/her IRS Form 1040.

Federal Direct Student Loan Program. The Stafford loans are either subsidized or unsubsidized. The student can receive a subsidized loan and an unsubsidized loan for the same enrollment period. A subsidized loan is awarded based on financial need. The student will not be charged any interest before beginning repayment or during authorized periods of deferment. The Federal Government "subsidizes" the interest during these periods. An unsubsidized loan is not awarded based on need. The student will be charged interest from the time the loan is disbursed until it is paid in full. If the interest is allowed to accumulate, it will be capitalized—that is, the interest will be added to the principal amount of the student's loan and additional interest will be based upon the higher amount.

These loans must be repaid by making payments beginning six months after a student graduates, leaves college, or drops below half-time enrollment.

REFUNDS

Tuition refunds occur in only a few situations. In these cases, the College will facilitate the refund according to the following policy:

1. **Withdrawal from the Accelerated Program:** If a student must withdraw from the Program, the student must pay for any course already started at the time of withdrawal, including the costs of the texts and materials that have been distributed to the student. If the tuition is paid in full for the semester, the student will be reimbursed at \$950 per course ASAP (\$1665 per course AMP) (no refund for certificate courses) that the student does not take.
2. **Determining Refunds:** For financial aid purposes the Business Office will consider students officially withdrawn as of the last day of the student's attendance.
3. **Federal and State Refund Requirements:** Both the Federal and State governments issue regulations which govern minimum refunds in certain situations. These regulations prevail over the policies of the College unless the College policy results in a larger refund to the student. In this case, the College will give the larger refund.

VETERANS BENEFITS

Carolina Christian College is approved to offer VA benefits to qualified students. Those students who qualify can submit proof of qualifications to the Business Office. Any questions or concerns regarding benefit amount should be directed to your VA representative.

VETERAN'S REFUND POLICY

The refund policy for veterans is in accordance with regulations set forth by the Department of Veterans Affairs.

REFUNDS ON WITHDRAWAL

Any student who withdraws from a course or does not complete enrollment will receive a refund based on the following schedule for cash paying students and VA students:

1. Before the second week of the beginning of an 8-week period in a semester: 50%
2. After the third week in an 8-week period in a semester: 0%

Student using Title IV funds must adhere to the Return Title IV funds policy.

CAROLINA CHRISTIAN COLLEGE INSTITUTIONAL GOALS

From its inception, Carolina Christian College has focused on providing quality biblical education to those who were underserved in the area. As such, the College provides opportunities to many students who did not see themselves as having access to a college education because of their performance in their K-12 education. To ensure we are meeting our mission, the College seeks to accomplish the following goals through the programs we offer.

1. The College will provide our students with an authentic Christian life experience.
2. The College will develop our students into more responsible citizens.
3. The College will develop the students' critical thinking skills.
4. The College will foster a culture that promotes scholarship and life-long learning.

PROGRAMATIC STUDENT LEARNING OBJECTIVES

To meet the institutional goals stated above, the College has set forth the following Student Learning Objectives for each program. Each programmatic learning objective is focused on meeting one or more of the institutional goals.

GENERAL EDUCATION

1. Students will demonstrate collegiate level reading and writing. (Goals 3 & 4)
2. Students will be able to develop the skills to gather, organize, refine, and critically evaluate information and ideas. (Goals 3 & 4)
3. Students will be able to apply critical thinking and problem-solving skills in the Christian Ethos. (Goals 1 & 3)

ASSOCIATE OF MINISTRY

1. Students will be able to provide a comprehensive account of the Old & New Testament. (Goal 1)
2. Students will develop a biblical world view and apply it to their ministry context. (Goals 1 & 2)
3. Students will demonstrate proficiency in the application of biblical principles in the exercise of ministry practice. (Goals 2 & 3)

BIBLICAL OF MINISTRY

Biblical Studies Minor

1. Students will, through mastery of the Old and New Testaments, be able to provide an explanation of the biblical narrative and a presentation of the Gospel. (Goal 3)
2. Students will be able to apply master of the Holy Scriptures to current historical context taking into account cultural, socioeconomic, and political reality. (Goal 3)
3. Students will live their lives and engage in ministry in a manner that is consistent with the ethics and morals taught by the Holy Scriptures. (Goals 1 & 2)

Homiletics minor

1. Students will demonstrate an understanding of the history of the art and science of preaching. (Goal 3)
2. Students will interpret socially relevant content biblically as a foundation for a relevant and applicable sermon. (Goal 2)
3. Students will demonstrate their understanding of how to prepare and present sermons. (Goal 4)

Leadership Minor

1. Students will integrate their biblical worldview in their leadership philosophy. (Goal 2)
2. Students will exemplify an engaged believer in the local community. (Goals 1 & 2)
3. Students will demonstrate initiative and involvement in community services. (Goals 1 & 2)

Non-Profit Leadership Minor

1. Students will learn how to cast a vision of a non-profit organization's mission to align with ethical Christian principles. (Goals 2, 3, & 4)
2. Students will develop the ability to motivate members of the community to support that mission financially and through action. (Goals 2 & 3)
3. Students will demonstrate initiative and involvement in community services. (Goals 1 & 2)

Christian Counseling Minor

1. Students will understand Christian theories from a sound biblical and theological point of view in order to develop professional competence within a thoroughly biblical framework focused on ministry. (Goals 2 & 3)
2. Students will develop deep levels of biblical and spiritual integrity in their own personal lives. (Goals 1 & 2)

3. Students will develop an understanding of procedures to effectively coach individuals in spiritual domains. (Goals 1 & 3)

Sports Management Minor

1. Students will exemplify an engaged believer in the local community. (Goals 1 & 2)
2. Students will integrate their spiritual world view in their Sports Management practice and philosophy. (Goals 1 & 2)
3. Students will demonstrate knowledge of various parts of the industry and identify resources and personnel needed for an event. (Goals 3 & 4)
4. Students will apply Christian principles in developing an ethical matrix that will allow athletes to flourish in a sports environment that can be quite secular and often changing. (Goals 1 & 2)

Sports Psychology Minor

1. Student will exemplify an engage believer in the local community. (Goals 1 & 2)
2. Students will learn to understand the psychology of athletes through the lens of a biblical personality, thinking, and emotions to help them maximize their God-given potential. (Goals 1 & 3)
3. Students will develop the ability to know and study the sports industry and all of its components to both contribute to the sociological knowledge of sports, and to evaluate the sports industry's ability to contribute positively to society. (Goals 2 & 3)

MASTER OF RELIGIOUS EDUCATION

Pastoral Care Specialization

1. Students will develop and demonstrate critical thinking ability in understanding the Bible and theology. (Goals 3 & 4)
2. Students will conduct master's level research to effectively design, administer, and evaluate the church programs related to Pastoral Care. The student will then be able to articulate the effectiveness of the research. (Goals 3 & 4)
3. Students will develop a pastoral perspective that is biblically empathetic and will practically apply their knowledge and instruction to care for the needs of the church and the community. (Goals 1 & 2)

Christian Education Specialization

1. Students will develop and demonstrate critical thinking ability in understanding the Bible and theology. (Goals 3 & 4)
2. Students will conduct master's level research to develop, administer, and evaluate church programs related to Christian Education. The student will then be able to articulate the effectiveness of the research. (Goals 3 & 4)
3. Student will develop and demonstrate a personal education philosophy that is biblically rooted. (Goals 1 & 4)

4. Student will demonstrate the ability to evaluate spiritual growth in their education related ministry context. (Goal 3)

DOCTORATE IN MINISTRY

Christian Leadership

1. Students will effectively analyze needs within their ministerial context. (Goal 3)
2. Students will adapt current research to develop and effectively communicate a plan to address the identified needs. (Goals 3 & 4)
3. Students will implement and evaluate the efficacy of the plan developed through collaboration with administrative leadership. (Goals 3 & 4)

PROGRAMS OF STUDY

NOTE: SEMESTERS 1-4 ARE PROPOSED STUDY FOR ASSOCIATE OF ARTS IN MINISTRY. THE COURSES LISTED ARE AN EXAMPLE OF A COURSE OF STUDY IN AN ACADEMIC YEAR. A STUDENT'S DEGREE AUDIT LISTS REQUIRED AND APPROVED SUBSTITUTE COURSES. THE APROVAL AND PREREQUISITES ARE REQUIRED THROUGH A STUDENT'S DEGREE AUDIT IN CCC'S LMS.

BACHELOR OF ARTS IN MINISTRY

Each program must include four elements:

1. A major of not less than 33 semester hours in Biblical Studies.
2. A basic core in the arts and sciences of not less than 36 hours, which must include fine arts, mathematics, and the social sciences.
3. Nine hours in Ministry courses.
4. Twenty-one hours in a selected minor.

The first four (4) semesters of the BA in Ministry program are the same for all students regardless of the chosen minor. Semesters five (5) and beyond will be specific to the individual minor.

MAJOR COURSE SEQUENCE:

Semester 1

MA100	Bible College Success Seminar	3 credits
MA102	Ministry Study Skills	3 credits
EN151	English Composition I*	3 credits
EN130	Library Literacy	3 credits
SO201	Introduction to Sociology	3 credits

Semester 2

HI101	World History I	3 credits
BI101	Old Testament Survey	3 credits
HI102	World History II	3 credits
BI102	New Testament Survey	3 credits
EN152	English Composition II	3 credits

Semester 3

BI211	Biblical Theology I	3 credits
BI201	Life & Ministry of Jesus I	3 credits
BI212	Biblical Theology II	3 credits
BI202	Life & Ministry of Jesus II	3 credits
EN201	Oral Communication	3 credits

Semester 4

MAT 201	College Algebra	3 credits
PS201	Introduction to Psychology	3 credits
ELEC	Required History	3 credits
ELEC	Required Social Science	3 credits
	Required Minor Pre-requisite**	3 credits
	Biblical Studies: BI 213	Biblical Theology III
	Leadership: CO101	Introduction to Counseling
	Homiletics: BI204	Hermeneutics
	Nonprofit Leadership: NP300	Foundations of Nonprofit Organizations
	Christian Counseling: CO101	Introduction to Counseling
	Sports Management: SPMT2310	Introduction to Sports Management
	Sports Psychology: SPMT2310	Introduction to Sports Management

*Students who do not meet the minimum Woodcock-Johnson scores will be required to take and pass EN101 and/or EN111 with a minimum of C before taking EN151.

**Students are required to earn a B or better in their minor prerequisite course in order to continue in that minor.

Biblical Studies Minor (Lead Professor Dr. Thorpe):

The goal of this program is to train ministers and associate ministers for the Church.

MINOR COURSE SEQUENCE:

Semester 5

EN 302	African-American Literature 1	3 hrs
EN 303	African-American Literature 2	3 hrs
HI 301	Church History 1	3 hrs
HI 302	Church History 2	3 hrs
	Ministry Elective	<u>3 hrs</u>
	Total	15 hrs

Semester 6

BI 402	Apologetics	3 hrs
BI 204	Hermeneutics	3 hrs
CO 301	Christian Counseling	3 hrs
BI 301	Acts of the Apostles	3 hrs
	Ministry Elective	<u>3 hrs</u>
	Total	15 hrs

Semester 7

BI 406	OT Seminar	3 hrs
	Biblical Elective	3 hrs
	Ministry Elective	3 hrs
	General Elective	3 hrs
	General Elective	<u>3 hrs</u>
	Total	15 hrs

Semester 8

BI 408	NT Seminar	3 hrs
PH 401	Ethics	3 hrs
	General Elective	3 hrs
	Leadership Elective	3 hrs
	General Elective	<u>3 hrs</u>
	Total	15 hrs

Leadership Minor (Lead Professor: Open):

The goal of this program is to equip the students with the tools necessary to be an effective leader in the workplace and/or the local church.

MINOR COURSE SEQUENCE:**Semester 5**

BI 204	Hermeneutics	3 hrs
BI 301	Acts of the Apostles	3 hrs
ML 302	Servant Leadership	3 hrs
	Bible Elective	3 hrs
	General Elective	<u>3 hrs</u>
	Total	15 hrs

Semester 6

MAT 302	Personal & Church Finances	3 hrs
MA 303	Church Administration	3 hrs
	Leadership Elective	3 hrs
ML 307	Church Planting	3 hrs
ML 402	Strategic Planning	<u>3 hrs</u>
	Total	15 hrs

Semester 7

EN 302	African American Literature 1	3 hrs
EN 303	African American Literature 2	3 hrs
	Leadership Elective	3 hrs
	Leadership Elective	3 hrs
	Leadership Elective	<u>3 hrs</u>
	Total	15 hrs

Semester 8

BI 402	Apologetics	3 hrs
PH 401	Ethics	3 hrs
CO 301	Christian Counseling	3 hrs
ML 411	Leadership Seminar	3 hrs
	General Elective	<u>3 hrs</u>
		Total 15 hrs

Homiletics Minor (Lead Professor Dr. Tyson)

The goal of this program is to equip the students for a preaching ministry in the local church.

MINOR COURSE SEQUENCE:**Semester 5**

PR 301	Principles of Exposition	3 hrs
PR 304	Homiletics	3 hrs
MA 202	Ministry of Evangelism	3 hrs
	Biblical Elective	3 hrs
	General Elective	<u>3 hrs</u>
		Total 15 hrs

Semester 6

PR312	Womanism in the Pulpit	3 hrs
HI 301	Church History 1	3 hrs
HI 302	Church History 2	3 hrs
	Biblical Elective	3 hrs
	Leadership Elective	<u>3 hrs</u>
		Total 15 hrs

Semester 7

PR 401	History Afr-Am. Preaching	3 hrs
PR 402	Preaching & Worship	3 hrs
	Ministry Elective	3 hrs
	Biblical Elective	3 hrs
	Leadership Elective	<u>3 hrs</u>
		Total 15 hrs

Semester 8

PR 412	Preaching Seminar	3 hrs
	Ministry Elective	3 hrs
	Leadership Elective	3 hrs
	General Elective	3 hrs
	General Elective	<u>3 hrs</u>
		Total 15 hrs

Non-Profit Leadership Minor (Lead Professor: Open)

The goal of this program is to prepare students for entry-level positions in a non-profit organization and being committed to serving under Christian values.

MINOR COURSE SEQUENCE:

Semester 5

NP 302	Foundation Nonprofit 2	3 hrs
NP 304	Business Communications	3 hrs
MA 201	Caring for Persons	3 hrs
	Biblical Elective	3 hrs
	General Elective	<u>3 hrs</u>
	Total	15 hrs

Semester 6

NP 313	Social Media in the Church	3 hrs
NP 402	Grant Writing	3 hrs
PH 401	Ethics	3 hrs
ML 402	Strategic Planning	3 hrs
ML 400	Team Building	<u>3 hrs</u>
	Total	15 hrs

Semester 7

NP 405	Nonprofit Management	3 hrs
NP 406	Nonprofit Acct. Fund.	3 hrs
	Ministry Elective	3 hrs
	Biblical Elective	3 hrs
	General Elective	<u>3 hrs</u>
	Total	15 hrs

Semester 8

ML 401	Ministry in Corporate	3 hrs
MAT 302	Personal & Church Finance	3 hrs
	Biblical Elective	3 hrs
	Biblical Elective	3 hrs
	General Elective	<u>3 hrs</u>
	Total	15 hrs

Christian Counseling (Lead Professor Open)

The goal of this program is to introduce the field of counseling to students who are interested in Christian and/or Biblical Counseling.

MINOR COURSE SEQUENCE:

Semester 5

BI 301	Acts of the Apostles	3 hrs
CO 301	Christian Counseling	3 hrs
	Ministry Elective	3 hrs
	Bible Elective	3 hrs
CO 302	Marriage & Family	<u>3 hrs</u>
	Total	15 hrs

Semester 6

CO 305	Crisis Counseling	3 hrs
MA 303	Church Administration	3 hrs
CO 306	Sexuality & Counseling	3 hrs
CO 401	Group Counseling	3 hrs
	Bible Elective	<u>3 hrs</u>
	Total	15 hrs

Semester 7

EN 302	African Am. Lit.	1	3 hrs
PH 401	Ethics		3 hrs
CO 402	Cross-Cultural Counseling		3 hrs
	Bible Elective		3 hrs
EN 303	African Am. Lit. 2		<u>3 hrs</u>
	Total		15 hrs

Semester 8

BI 402	Apologetics	3 hrs
CO 404	Treatment Issues	3 hrs
	Bible Elective	3 hrs
CO 405	Assessment	3 hrs
	Bible Elective	<u>3 hrs</u>
	Total	15 hrs

Sports Psychology Minor (Lead Professor: Dallas Christian Designee)

The Athletic Director and/or Coaches are advisors of the program; however, this individual has no teaching responsibility with designated minor courses.

Through a partnership with Dallas Christian College, this program equips students with the foundational tools in psychology, with a focus on sports and athletes, from a biblical perspective. It should be noted that all licensing for psychology and counseling requires the minimum of a master's degree.

MINOR COURSE SEQUENCE:

Semester 5

BI 301	Acts of the Apostles	3 hrs
PS 2320	Abnormal Psychology 1	3 hrs
PS 2340	Sports Psychology	3 hrs
BI 210	Bible Geography	3 hrs
PS 2305	Cognition & Emotion	<u>3 hrs</u>
Total		15 hrs

Semester 6

CO 405	Assessment	3 hrs
	Bible Elective	3 hrs
PS 3340	Abnormal Psychology 2	3 hrs
PS 3315	Theories of Personality	3 hrs
BI 253	World Religion	<u>3 hrs</u>
Total		15 hrs

Semester 7

PS 4320	Psych. & Christian Thought	3 hrs
	Bible Elective	3 hrs
	Bible Elective	3 hrs
	Bible Elective	3 hrs
CO 302	Marriage and Family	<u>3 hrs</u>
Total		15 hrs

Semester 8

BI 406	OT Bible Seminar	3 hrs
PS 3321	Pastoral Counseling	3 hrs
BI 353	Pastoral Epistles	3 hrs
PSYC 2345	Psych. Test./Res. Method.	3 hrs
PS 4340	Psychology Capstone	<u>3 hrs</u>
Total		15 hrs

Sports Management Minor (Lead Professor: Dallas Christian Designee)

The Athletic Director and/or Coach is an advisor of the program; however, this individual has no teaching responsibility with designated minor courses.

Through a partnership with Dallas Christian College, this program equips students with business and administration skills, related to the field of sports, while providing them with a solid biblical foundation for Christian influence in a sports-related workplace.

MINOR COURSE SEQUENCE:

Semester 5

BI 301	Acts of the Apostles	3 hrs
ACC 2301	Accounting 1	3 hrs
ACC 2302	Accounting 2	3 hrs
BI 210	Bible Geography	3 hrs
SPM 3310	Prin Sports Leadership	<u>3 hrs</u>
	Total	15 hrs

Semester 6

MGMT 2320	Management Comm.	3 hrs
BI 252	Revelation	3 hrs
SPM 3312	Sports Communication	3 hrs
SPM 3305	Sports Marketing	3 hrs
BI 253	World Religion	<u>3 hrs</u>
	Total	15 hrs

Semester 7

BI 402	Apologetics	3 hrs
BI 352	Epistles from Prison	3 hrs
	Bible elective	3 hrs
ML 401	Ministry Corporate World	3 hrs
MGT 4304	Org. Behavior Resp	<u>3 hrs</u>
	Total	15 hrs

Semester 8

	Bible Elective	3 hrs
	Leadership Elective	3 hrs
	Leadership Elective	3 hrs
MGT 4308	Strategic Management	3 hrs
	General Elective	<u>3 hrs</u>
	Total	15 hrs

NOTE: CCC OFFERS A BACHELOR OF ARTS IN MINISTRY DEGREE WITH MINORS IN THE ABOVE-MENTIONED PROGRAMS OF STUDY

MASTER OF RELIGIOUS EDUCATION

Each program must include four elements:

1. Core hours of not less than 24 semester hours in Biblical Studies.
2. A specialization of not less than 21 hours, in a discipline.
3. Six hours in elective courses.
4. Completion of a capstone project.

MRE, Pastoral Care Specialization (Lead Professor Dr. Tyrone Tyson)

Semester 1

GE 600	Graduate Writing Seminar	3 hrs
BI 501	Old Testament Survey	<u>3 hrs</u>
	Total	6 hrs

Semester 2

BI 503	New Testament Survey	3 hrs
BI 505	Biblical Theology	3 hrs
BI 510	Acts of the Apostles	<u>3 hrs</u>
	Total	9 hrs

Semester 3

BI 511	World Religion	3 hrs
BI 532	Apologetics	3 hrs
HI 501	Church History 1	<u>3 hrs</u>
	Total	9 hrs

Semester 4

HI 502	Church History 2	<u>3 hrs</u>
	Total	3 hrs

Semester 5

PC 503	Pastoral Care/Afr-Am. Church	3 hrs
CO 503	Pastoral Counseling	3 hrs
PC 501	Spiritual & Pastoral Care	<u>3 hrs</u>
	Total	9 hrs

Semester 6

PC 521	Group Theory & Practice	3 hrs
PC 531	Relig. & Psych. Research	3 hrs
PC 541	Biblical Philosophy & P. C.	<u>3 hrs</u>
	Total	9 hrs

Semester 7

PH 501	Ethics	3 hrs
	Leadership Elective	<u>3 hrs</u>
	Total	6 hrs

Semester 8

PC 511	Pastoral Care & Mental Health	3 hrs
ML 503	Critical Issues of the Ministry	<u>3 hrs</u>
	Total	6 hrs

Semester 9

	Leadership Elective	3 hrs
PC 599	Pastoral Care Seminar	<u>3 hrs</u>
	Total	6 hrs

MRE, Christian Education Specialization (Lead Professor Dr. Thorpe)**Semester 1**

GE 600	Graduate Writing Seminar	3 hrs
BI 501	Old Testament Survey	<u>3 hrs</u>
	Total	6 hrs

Semester 2

BI 503	New Testament Survey	3 hrs
BI 505	Biblical Theology	3 hrs
BI 510	Acts of the Apostles	<u>3 hrs</u>
	Total	9 hrs

Semester 3

BI 511	World Religion	3 hrs
BI 532	Apologetics	3 hrs
HI 501	Church History 1	<u>3 hrs</u>
	Total	9 hrs

Semester 4

HI 502	Church History 2	<u>3 hrs</u>
	Total	3 hrs

Semester 5

CE 501	Ministry of Teaching	3 hrs
CE 502	Ministry to Children	3 hrs
CE 503	Ministry to Adults	<u>3 hrs</u>
	Total	9 hrs

Semester 6

CE 513	Curriculum Development	3 hrs
CE 521	Phil of Chr. School Education	3 hrs
	Elective	<u>3 hrs</u>
	Total	9 hrs

Semester 7

PH501	Ethics	3 hrs
	Leadership Elective	<u>3 hrs</u>
	Total	6 hrs

Semester 8

	General elective	3 hrs
CE 541	Communication Biblical Truth	<u>3 hrs</u>
	Total	6 hrs

Semester 9

	Leadership Elective	3 hrs
--	---------------------	-------

CE 599	Christian Education Seminar	<u>3 hrs</u>
	Total	6 hrs

DOCTOR OF MINISTRY

This program is designed to meet students' needs whether already in a formal church setting or involved in a para-church ministry. The Doctor of Ministry degree is designed for those who have earned the MDiv, Min, MTS, or MRE, or comparable degree and who has substantial experience in ministry.

The program includes three elements:

1. Core hours of not less than 25 semester hours in core studies.
2. Six hours in elective courses.
3. Successful completion and defense of a dissertation and comprehensive exam.

DMIN, Christian Leadership (Lead Professor Dr. Thorpe)

Year 1

GE 600	Graduate Writing Seminar	3 hrs
LS 750	Spiritual Discipline for Leaders	5 hrs
LS 752	Developing Ldr Strategy	5 hrs
GE 701	Dissertation	<u>1 hr</u>
	Total	14 hrs

Year 2

LS 754	Theological Fond. Ldr.	5 hrs
LS 766	Biblical Ldr in M/Culture	5 hrs
GE 702	Dissertation	<u>1 hr</u>
	Total	11 hrs

Year 3

LS 767	Global Awareness in Bus	5 hrs
	Elective	3hrs
GE 703	Dissertation	<u>1 hr</u>
	Total	9 hrs

Year 4

	Elective	3 hrs
GE 704	Dissertation	<u>1 hr</u>
	Total	4 hrs

UNDERGRADUATE COURSE DESCRIPTIONS

Biblical Studies (BI)

- **BI 301 Acts of Apostles (3 credits)**
This course is an exegetical study of the Book of Acts with emphasis on major historical developments and theological themes contained in the text.
 - **Prerequisite: BI 101 & BI 102**
- **BI 303 Old Testament Law (3 credits)**
This course is an exhaustive study of the Old Testament books of Genesis through Deuteronomy.
 - **Prerequisite: BI 101 & BI 102**
- **BI 305 Epistles of Grace (3 credits)**
This course is an exhaustive study of the New Testament Epistles of Grace.
 - **Prerequisite: BI 101 & BI 102**
- **BI 350 Old Testament Wisdom Literature (3 credits)**
An exhaustive study of the Old Testament books of Job through Song of Solomon.
 - **Prerequisite: BI 101 & BI 102**
- **BI 351 Old Testament Prophets (3 credits)**
An exhaustive study of the Old Testament books of Isaiah through Malachi.
 - **Prerequisite: BI 101 & BI 102**
- **BI 352 Epistles from Prison (3 credits)**
A study of the New Testament books of Ephesians, Philippians, Colossians, and Philemon.
 - **Prerequisite: BI 101 & BI 102**
- **BI 353 Pastoral Epistles (3 credits)**
A study of the New Testament books of 1 & 2 Timothy and Titus.
 - **Prerequisite: BI 101, BI 102, & BI 352**
- **BI 354 General Epistles (3 credits)**
A study of the New Testament books of James through Jude and Hebrews.
 - **Prerequisite: BI 101, BI 102, & BI 353**
- **BI 402 Apologetics (3 credits)**
A study in why we believe in God and the Bible, and the theological implications of our faith.
 - **Prerequisite: BI 101 & BI 102**
- **BI 406 Old Testament Seminar (3 hours)**
An opportunity for the student to follow a special interest in the Old Testament. Each student will specialize in some issue, topic, or book, and prepare a mature discussion for the class.
 - **Prerequisite: 24 hours of BI courses and permission of the instructor.**
- **BI 408 New Testament Seminar (3 hours)**
An opportunity for the student to follow a special interest in the New Testament. Each student will specialize in some issue, topic, or book, and prepare a mature discussion for the class.
 - **Prerequisite: 24 hours of BI courses and permission of the instructor.**

Counseling (CO)

- **CO 101 Introduction to Counseling (3 hours)**

This course provides an introduction to biblical counseling principles with an emphasis on the challenges and intricacies of substance abuse.
- **CO 301 Christian Counseling (3 hours)**

An introduction to the foundations of Christian counseling, emphasizing the priority of a theological system for theory and practice. Special attention is given to models of integration, historical development, current directions, and collaborative models of Christian counseling for the local church and professional Christian counselor.
- **CO 302 Marriage & Family (3 hours)**

This course is designed to study the social institution of marriage and family. This social institution will be examined through its initiation rites, its organization with supporting roles and communication flow, its economic factors, strengths, weaknesses, and unique place in various cultures.
- **CO 305 Crisis Counseling (3hours)**

This course will provide a foundation of the theoretical concepts and practical applications of crisis response and critical incidents, taking into account topics such as: intervention models and their efficacy and the consequential effects of critical incident stress and trauma on the life of an individual, group, and organization.
- **CO 306 Sexuality & Counseling (3 hours)**

This course addresses the biological, developmental, relational, emotional, and spiritual issues that are involved in understanding human intimacy and sexuality. The course also examines sexuality from a cultural perspective and the Christian response and responsibility to sex in our culture.
- **CO 401 Group Counseling (3 hours)**

An examination of group functioning and the various aspects of group counseling, practical application of skills necessary for organizing, designing, leading, and evaluating groups.

 - Prerequisite: CO 301
- **CO 402 Cross-Cultural Counseling (3 hours)**

This course familiarizes students with theories, counseling techniques, skill development, and a wide range of issues regarding ethical and effective counseling in a world of cultural differences. Emphasis is placed on expanding cultural awareness, knowledge and skill building in order to facilitate an appreciation of cultural, racial, ethnic, age, gender, and sexual orientation issues.
- **CO 404 Treatment Issues and Protocols (3 hours)**

This course surveys various models of screening, assessment, and treatment approaches for addictive behaviors. The student will learn how to assess problems and develop treatment strategies that are paramount for every counselor.

 - Prerequisite: 9 hours of CO courses and permission of the instructor.
- **CO 405 Assessment (3 hours)**

An introduction to the essentials of assessment principles, concepts, standards, and instruments for individual's attitudes, aptitudes, achievements, interests, and personal characteristics using both formal and informal approaches.

Ministry in Leadership (ML)

- **ML 301 The Ministry Leader (3 hours)**
Concentrating on two primary elements, personal awareness and leadership practice, students are provided the opportunity to engage in a series of self-assessments. The leadership development process is also examined through case studies, leadership literature, and selected leadership concerns.
- **ML 302 Servant Leadership (3 hours)**
This course introduces students to the successful model of servant leadership in a biblical context. Characteristics of servant leadership, including integrity, humility, vision, and holiness, are explored.
- **ML 307 Church Planting (3 hours)**
This course will introduce the student to the literature, skills, and philosophy that will enable him/her to lead in the planting of a new congregation.
- **ML 400 Team Building and Leadership Development (3 hours)**
The course will examine the basic structure of teams, why they are important, how they are developed, how they are managed and evaluated through an empirical model of effective leadership.
- **ML 401 Ministry in the Corporate World (3 hours)**
A study of principles and methods required for effective evangelistic ministry in the business world through the vehicle of corporate chaplaincy or other ministry opportunities in business and industry.
- **ML 402 Strategic Planning (3 hours)**
This course examines Biblical precedent for strategic thinking in the development of a strategic plan to address social issues and/or community needs.
- **ML 403 Managing Conflict and Change in Ministry (3 hours)**

This course is designed for smaller ministries that would allow students to study best practices in managing and resolving church conflict while contributing to congregational health and development.
 - Pre-requisite HI 301 and HI 302
- **ML 411 Leadership Seminar (3 hour)**
A small group seminar on current issues in Christian leadership, emphasizing research and problems.
 - Prerequisite: 9 hours of ML courses and only taken in last semester of studies.

Ministry Areas (MA)

- **MA 100 Bible College Success Seminar**
This course is designed to provide the first-year and/or transfer student with information and tools for making a successful transition to college. The course will focus on the implementation of college level Biblical studies with a focus on developing college level writing skills (e.g. preparing and presenting papers, use of the MLA style guide, and Biblical research techniques and tools).
- **MA 101 Introduction to Worship (3 hours)**
This course provides a framework for thinking together about vital and faithful Christian worship by exploring the Biblical and theological foundations of worship and analyzing today's worship spectrum. Key elements in the practice and leadership of worship will be explored including the ordering of worship, the role of prayer and music, and models of collaborative worship planning.

- **MA 102 Ministry Study Skills (3 hours)**
This course is an introduction to the various methods and techniques to adequately and effectively study at a collegiate level and appropriately balance education and ministry work.
- **MA 103 Introduction to Ministry (3 hours)**
Introduction to the variety of types of service that are included in the program of the church. In it the student will study the need, preparation required, and opportunities for service, as well as analyze his/her own talents and desires.
- **MA 105 Church Polity (3 hours)**
This course will identify the variety of church governance models and how each one operates according to denomination. Biblical models will be discussed and incorporated in a modern cultural context.
- **MA 201 Caring for Persons (3 hours)**
This course will prepare students to demonstrate biblical care for the community. The course will focus on the establishment of the care ministry as modeled in Acts chapter 6 and will explore additional scriptures that specify the definition and purpose of caring in a biblical manner.
- **MA 202 Ministry of Evangelism (3 hours)**
This course will prepare students to engage in effective witnessing in fulfillment of the Great Commission.
- **MA 203 Physical Wellness (3 hours)**
This course is designed to help students understand the importance of physical wellbeing as the body being the temple of the Holy Spirit.
- **MA 205 Spiritual Wellness (3 hours)**
This course is designed to help bring awareness to students of how they internalize external stressors and how to develop appropriate biblical practices to strengthen the inner man.
- **MA 303 Church Administration (3 hours)**
A study of administrative principles and practices for the local church. The course examines staff, finances, and buildings in churches and integrates material from both religious and secular sources.
- **MA 304 Ministry to Youth (3 hours)**
This course will address the methods of developing youth work in the local church. Special attention will be given to the establishment of activities that will attract and hold the interest of young people.
- **MA 306 Race & Ethnic Relations (3 hours)**
This course will address the background of race relations and help the student understand the reasons for the current condition of race relations.
- **MA 400 Millennial Church Evangelism (3 hours)**
This course examines the students' modernist views in the local church's evangelistic environment while addressing the need to fulfill the Great Commission to a millennial and post-millennial generation.

Non-profit Leadership (NFP)

- **NP 300 Foundations of Nonprofit Organizations 1**
This course provides students with an understanding of the historical and philosophical aspects of non-profit organizations, their development, governance, maintenance, and operations, and how these components define an organization.
- **NP 302 Foundations of Nonprofit Organizations 2**
This course provides an understanding of the most effective and successful methods of fundraising, application of the basics of fundraising skill development through fundraising software, and development of an annual timeline for a fundraising plan. This course also prepares students to apply the process of an effective letter of appeal and special fundraising events, compare and contrast capital campaign and annual funds. The student will ultimately be able to build a portfolio of foundations through research.
 - Prerequisite NP 300
- **NP 304 Business Communications**
This is an introduction to various aspects of business communications. It examines the application of communication principles to current business situations.
- **NP 313 Social Media in the Church**
This course prepares students for the appropriate use of social media in communication, marketing, public relations, and evangelism for the church and/or non-profit organizations.
- **NP 402 Grant Writing**
This course is designed to help students develop the process of writing a successful grant proposal through the application of fundraising methods that will appeal to a foundation.
 - Prerequisite: NP 302
- **NP 405 Nonprofit Management**
This course will provide students with the knowledge of basic principles and processes of nonprofit management. The students will be able to design an appropriate plan of leadership for different types of nonprofit organizations.
- **NP 406 Nonprofit Accounting Fundamentals**
This course provides students with the knowledge of the proper use of accounting principles and maintaining financial records for nonprofit organizations. The course will also focus on understanding GAAP standards.

Preaching (PR)

- **PR 301 Principles of Exposition (3 hours)**
A study of the skill of preparing sermons using the scripture as the foundational outline for the message.
 - Prerequisite: BI 204
- **PR 304 Homiletics (3 hours)**
A study of the basic principles and skills used in the preparation and delivery of sermons.
 - Prerequisite: EN 201

- **PR 312 Womanism in the Pulpit (3 hours)**
In this course students will develop a theological disposition in the presentation of a womanist narrative from the pulpit. They will also explain the progression of women in the pulpit and the obstacles they face in the 21st Century.
- **PR 401 History of African-American Preaching (3 hours)**
This class will examine the style, methodology, and social influence of the African American preacher from pre-slavery times to the present.
- **PR 402 Preaching and Worship (3 hours)**
The student will learn how to integrate preaching and worship into a model that maintains social and theological relevance.
- **PR 412 Preaching Seminar (3 hours)**
Each student will develop a preaching event of their choosing that will demonstrate a culmination of their skills.

General Education

Bible (BI)

- **BI 101 Old Testament Survey (3 credits)**
This course provides a complete overview of the Old Testament. It briefly examines the content of each book in historical perspective and considers the origin, structure, and content of each book. This will serve as a foundation for understanding the Bible.
➤ Along with BI 102, this course is a prerequisite for all BI 200 courses and above
- **BI 102 New Testament Survey (3 credits)**
This course provides a complete overview of the New Testament. It briefly examines the content of each book in historical perspective and considers the origin, structure, and content of each book. This will serve as a foundation for understanding the Bible.
➤ Along with BI 101, this course is a prerequisite for all BI 200 courses and above.
- **BI 106 Introduction to the Bible (3 credits)**
This course will introduce basic biblical themes, what the Bible is, the writers of the Bible, the format of the Bible, and how to adequately study the Bible. This course will also include how to reference biblical text in collegiate writing.
- **BI 130 Biblical Interpretation in a Hip-Hop Culture (3 credits)**
This course considers the Biblical interpretations of the Hip-Hop generation. It evaluates the Hip-Hop generation, their music innovated by African Americans. This course will give particular attention to the Hip-Hop generation, its roots in the Black church. Students will have the opportunity to explore cultural and educational issues with exposure to the Hip-Hop music genre.
- **BI 201 Life and Ministry of Jesus 1 (3 credits)**
This course provides an overview of the life of Christ beginning with the ministry of John the Baptist to the end of Jesus's ministry in Galilee.
➤ **Prerequisite: BI 101 & BI 102**
- **BI 202 Life and Ministry of Jesus 2 (3 credits)**
This course provides an overview of the life of Christ from His later Judean ministry to His death and resurrection.

- **Prerequisite: BI 201**
- **BI 204 Hermeneutics (3 credits)**
A study of the laws of interpretation of language and literature, especially as applied to the Bible. This course introduces the best practice methods to interpret biblical passages in their historical, grammatical, and theological context.
 - **Prerequisite: BI 101 & BI 102**
- **BI 210 Bible Geography (3 credits)**
A study of the historical geography during the time of the biblical narrative with an emphasis on the contextual framework within the life of Jesus and their relation to modern day geography.
 - **Prerequisite: BI 101 & BI 102**
- **BI 211 Biblical Theology I (3 credits)**
This course will address major themes in Christian Theology. This course will focus on the study of God, knowing God, what God is like, and what God does. This course, along with BI 206 and BI 207, will provide a foundation for other theological classes.
 - **Prerequisite: BI 101 & BI 102**
- **BI 212 Biblical Theology II (3 credits)**
This course will address major themes in Christian Theology. This course will focus on humanity, sin, the person of Christ, and the work of Christ. This course, along with BI 205 and BI 207, will provide a foundation for other theological classes.
 - **Prerequisite: BI 211**
- **BI 213 Biblical Theology III (3 credits)**
This course will address major themes in Christian Theology. This course will focus on the Holy Spirit, salvation, the Church, and the eschatology. This course, along with BI 205 and BI 206, will provide a foundation for other theological classes.
 - **Prerequisite: BI 212**
- **BI 250 Old Testament History (3 credits)**
This course focuses on the twelve historical books of the Old Testament with an emphasis on the three periods of Israel's history before the Roman Empire—Settlement, the Monarchy, and Post-Exile.
 - **Prerequisite: BI 101 & BI 102**
- **BI 251 Epistles of Christian Living (3 credits)**
A study of the New Testament books of 1 & 2 Corinthians, and 1 & 2 Thessalonians. This course provides a broad overview of the major themes in the New Testament Books of 1 & 2 Corinthians and 1 & 2 Thessalonians with an emphasis on Christian living principles.
 - **Prerequisite: BI 101 & BI 102**
- **BI 252 Revelation (3 credits)**
This course offers introductory material and content of the book of Revelation in light of its context. It introduces the student to the most common systems for understanding Revelation.
 - **Prerequisite: BI 101 & BI 102**
- **BI 253 World Religion (3 credits)**
This course deals with the attempts of humanity to build theologies other than the Christian one. The study will include such religions as Buddhism, Islam, and Hinduism, as well as some of the modern cults.
 - **Prerequisite: BI 101 & BI 102**

English (EN)

- ***EN 101 English Communications (3 hours)**
This course will assist students in establishing the needed skills and understanding for college level communication.
**denotes this course is not counted towards graduation requirements*
- ***EN 111 Reading Skills (3 hours)**
This course will emphasize increased proficiency in reading comprehension skills, vocabulary development, rate of reading and improve the student's reading skills for college level reading. It emphasizes strategies for reading a variety of texts, and ways to improve reading comprehension, vocabulary, and writing.
**denotes this course is not counted towards graduation requirements*
- **EN 130 Information Literacy (3 hours)**
This course will explain and illustrate how to find both print and digital resources and how to cite them in different formats. Students will learn how to assess the usefulness of a resource and how to build a strong, well-sourced piece of research. This course establishes students' understanding of different types of writing styles and the appropriate context in which to use those styles.
- **EN 151 English Composition 1 (3 hours)**
This course will introduce students to the fundamentals of written discourse, focusing on the development of writing skills applied to different purposes and emphasis on logic, organization, levels of usage, grammar, mechanics, information gathering, and audience awareness.
 - Prerequisite EN 101 or exemption
- **EN 152 English Composition 2 (3 hours)**
This course will provide students with practice in the art of communication and use of MLA style. It will prepare students to become critical thinkers through the engagement of various texts. This course will take the mechanics the students learned in English Composition 1 and build on those to develop the necessary skills for academic writing.
 - Prerequisite EN 151
- **EN 201 Oral Communication (3 hours)**
This course is an introduction to the basic principles and skills required for effective public speaking. This course gives opportunity to gain public speaking skills.
- **EN 302 African-American Literature 1 (3 hours)**
The study of literature of black culture and the importance of this literature in the United States and around the world. The focus of this course will be literature from slavery through the Harlem Renaissance.
 - Prerequisite EN 152
- **EN 303 African-American Literature 2 (3 hours)**
The study of literature of black culture and the importance of this literature in the United States and around the world. The focus of this course will be literature during the eras of Realism, Naturalism, Modernism up to the present.
 - Prerequisite EN 152

History (HI)

- **HI 101 World History 1 (3 hours)**

The purpose of this course is to develop greater understanding of the evolution of global processes and contacts in different types of human societies prior to 1500 AD. The course highlights the nature of changes in global frameworks and their causes and consequences, as well as comparisons among major societies. Special emphasis will be placed on the role of Christianity.

- **HI 102 World History 2 (3 hours)**

The purpose of this course is to develop greater understanding of the evolution of global processes and contacts in different types of human societies after 1500 AD. The course highlights the nature of changes in global frameworks and their causes and consequences, as well as comparisons among major societies. Special emphasis will be placed on the role of Christianity.

- **HI 202 History of Black America I (3 hours)**

A study of the history of the development of black culture in America with a view to understanding its impact on current social problems including and up to the Civil War Era.

- Pre-requisite HI 101

- **HI 203 History of Black America II (3 hours)**

A study of the history of the development of black culture in America with a view to understanding its impact on current social problems in post-Civil War America.

- Pre-requisite HI 202

- **HI 300 Church and Politics (3 hours)**

An examination of the historical role of the church in the development of a political view of American society in the post-Civil Rights Era.

- **HI 301 Church History (3 hours)**

An overview of the major developments in churches from Apostolic Age to the Protestant Reformation.

- **HI 302 Church History (3 hours)**

An overview of church history from Protestant Reformation to the coming of Modernism. This course gives attention to all American religious movements from beginning to present.

- Prerequisite HI 301

- **HI 303 Restoration History (3 hours)**

This course is an examination of the development of the Restoration Movement from beginning to the present. The purpose of the course is to help students understand the doctrinal, liturgical, and organizational development of the Restoration Movement.

Mathematics (MAT)

- **MAT 201 College Algebra (3 hours)**

This course is designed to familiarize learners with fundamental mathematical concepts such as inequalities, polynomials, linear and quadratic equations, and logarithmic and exponential functions.

- **MAT 302 Personal and Church Finances (3 hours)**

A study of the principles and practices of managing personal and church finances including banking, checkbook keeping, credit, financial instruments, investments, and financial planning.

Philosophy (PH)

- **PH 401 Ethics (3 hours)**

This course is an introduction to some important ethical theories including: the duty ethics of Kant; ethical relativism; and the virtue ethics philosophers including, but not limited to, Plato, Aristotle, and Thomas Aquinas.

Psychology (PS)

- **PS 201 Introduction to Psychology (3 hours)**

A survey of the field of Psychology that provides an overview of the scientific principles and theories in Psychology. Emphasis is given to the following areas of Psychology: history of Psychology; research methods; biological basis of behavior; sensation and perceptual processes; variations in consciousness, learning, human memory, and language and thought.

- **PS 202 Human Development & Ministry (3 hours each)**

This course explores the relationship between developmental psychology, human, and religious faith development. Learners will study some major developmental theorists and their impact upon human development, learning, and faith. Learners will critique various developmental theories within a theological framework, and where possible, integrate them into a more holistic approach in their ministry context.

Sociology (SO)

- **SO 201 Introduction to Sociology (3 hours)**

A study of the social life of man and the nature of social groups (including, but not limited to family, race, community, religious institutions, and class) as they pertain to society and civilization.

GRADUATE COURSE DESCRIPTIONS

Biblical Studies (BI)

- **BI 501 Old Testament Survey (3 hour)**
A comprehensive study of the canon and the text of the Old Testament along with an analysis of the composition, themes, authorship, date, and design of each book. Special attention is given to the chronology, social, political, and other background information of the Old Testament.
- **BI 503 New Testament Survey (3 hour)**
A comprehensive study of the canon and the text of the New Testament along with an analysis of the composition, themes, authorship, date, and design of each book. Special attention is given to the chronology, social, political, and other background information of the New Testament.
- **BI 505 Biblical Theology (3 hour)**
This course is an analysis of the principal features of Bibliology, Trinitarianism (theology proper, Christology, Pneumatology), Angelology, Ecclesiology, and Eschatology from the perspective of the Bible. It includes a study of the identity and works of the Persons of the Godhead. This course also includes a systematic study of the biblical presentation of these doctrines.
- **BI 510 Acts of Apostles (3 hours)**
This course is a study of the preaching, life, and growth of the first generation of the church as described in the book of Acts. It is a study of the formation of the early church and the spread of its message. Special attention is given to the birth of the Church, the Jerusalem Council, and Paul's journeys in the face of opposition from Israel.
- **BI 511 World Religion (3 hours)**
This course is a study of major religions such as Buddhism, Islam, and Hinduism, as well as some of the modern cults. It is the study of the historical context of these religions to promote understanding among believers of different faiths.
- **BI 532 Apologetics (3 hours)**
A study of philosophical and theological issues relative to Christian apologetics within the context of worldview. Major attention is given to the relationship between faith and reason, the value of theistic arguments, Christian certainty, and the character of revelation, along with the development of an apologetic methodology.

Counseling (CO)

- **CO 503 Pastoral Counseling (3 hours)**
This course provides an in-depth study of the appropriate interventions for various crises encountered in pastoral counseling. The course will also study some of the common counseling situations and problems faced by the pastor and will discuss some of the pitfalls.

Pastoral Care (PC)

- **PC 501 Advanced Pastoral Care (3 hours)**
This course dissects the field of pastoral care. Through readings and case studies, students are encouraged to assemble pastoral care perspectives, ones which are expanded by theological resources.
- **PC 503 Pastoral Care in the African American Church (3 hours)**
This course examines the fundamentals of pastoral care and its application to specific issues in the African American Church. In addition, this course will examine how pastoral care synthesizes with today's social movements originating from the African American Church.
- **PC 521 Group Theory and Practice (3 hours)**
This course provides a didactic and practicum blended approach to the understanding of group theory, types of groups, group dynamics, methods, and facilitative skills. The course includes ethical and legal issues as well as multicultural and social issues related to groups.
- **PC 531 Psychology of Religion (3 hours)**
This course will explain the methods and topics that comprise the field known as the psychology of religion and reflect on the conceptual underpinnings that a faith perspective brings to these topics while exploring the implications of these perspectives.
- **PC 541 Biblical Philosophy of Pastoral Care (3 hours)**
This course analyzes biblical passages to construct a biblical foundation for a Bible-based philosophy of pastoral care.
- **PC 511 Pastoral Care & Mental Health (3 hours)**
This course will analyze the behavioral sciences that undergird pastoral care practices.
- **PC 599 Pastoral Care Seminar (3 hours)**
The purpose of this course is for the student to complete a capstone project with a focus on Pastoral Care within their ministry context. This project will be the culmination and application of students' skillset to address a problem they identify.

Ministry in Leadership (ML)

- **ML 501 Dynamics of Christian Leadership (3 hours)**
This course is an analysis of the qualities and practices of the effective Christian leader based on principles in Scripture and related literature, with attention to devising a personal philosophy of spiritual leadership. The course also includes an application of biblical concepts to both personal and career goals.
- **ML 502 Church Planting (3 hours)**
The organizational structure of the church is studied in various cultural and denominational models to determine those that are most functional in a given cultural context. Various new ways of planting Christian congregations within the integrity of a given culture and within biblical guidelines will be analyzed.

- **ML 503 Critical Issues of the Ministry (3 hours)**
An in-depth study of some of the most frequent and most important issues facing the pastor today. Included are such topics as marriage, divorce, remarriage, abortion, dysfunctional families, conflict management, finances, legal issues, alternative lifestyles, in addition to other.
- **ML 504 Urban Evangelism (3 hours)**
A course focusing on Christian missions and ministry in the world's growing cities. The biblical basis for urban ministry is presented and case studies of effective urban strategies worldwide are examined.
- **ML 505 Church & Law (3 hours)**
A study of the most important rules of contracts, torts, and statutory law that bind the Church as a business and social enterprise. This course will address the significant challenges presented by changing laws and regulations focusing on the pastor of the local church.
- **ML 507 Church Marketing (3 hours)**
An introduction to basic marketing concepts, branding, and tools to implement marketing in the church.

Christian Education (CE)

- **CE 501 Ministry of Teaching (3 hours)**
This course will examine the essentials of education as the process of discovery and development of human potential. Emphasis will be given to philosophical, psychological, and biblical foundations of education; education in the purpose of the church; and the globalization of education. The practical element of teaching will be stressed.
- **CE 502 Ministry to Children (3 hours)**
This course will examine the elements of and means of facilitating effective children's ministries in various settings within the local church. Basic needs of children as well as crisis awareness will be discussed. Developmental stages of children will be reviewed, and age-appropriate and developmentally appropriate teaching methodologies will be examined, with a focus on teaching Scripture.
- **CE 503 Ministry to Adults (3 hours)**
An interpretation and integration of the basic needs and problems of adults, with special attention given to religious development. This course will also give an analysis of what it takes to capture the attention of adults, minister to their needs, and solve common problems.
- **CE 513 Curriculum Development (3 hours)**
This course deals with the theory and practice of the design and preparation of curriculum, including the writing of a curriculum unit.
 - Prerequisite: CE 501 Ministry of Teaching
- **CE 521 Philosophy of Christian School Education (3 hours)**
A philosophical and theological analysis of the major aspects of a Christian school for pastors, administrators, teachers, and other church leaders. Topics include school structure, curriculum, and teaching methods.

- **CE 541 Communication of Biblical Truths (3 hours)**
This course is designed to enable a student to appreciate biblical truths and how to communicate those truths in a manner appropriate to guard the truth.
- **CE 599 Christian Education Seminar (3 hours)**
The purpose of this course is for the student to complete a capstone project with a focus on Christian Education within their ministry context. This project will be the culmination and application of students' skillset to address a problem they identify.

Graduate General Education

Graduate Education (GE)

- **GE 600 Graduate Writing Seminar**
This course is intended to provide students with an introduction to graduate-level work, writing, and research. There will be particular focus on the separate components of the Master's capstone and the Doctoral dissertation.

History (HI)

- **HI 501 Church History 1 (3 hours)**
A comprehensive study of the major developments in churches from Apostolic Age to the Protestant Reformation.
- **HI 502 Church History 2 (3 hours)**
A comprehensive study of church history from the Protestant Reformation to the coming of Modernism. This course gives attention to all American religious movements from beginning to present.
 - Pre-requisite: HI 501

Philosophy (PH)

- **PH 501 Ethics (3 hours)**
Deals with the personal relationships of the Christian worker. Time will be spent on both the philosophy and the application of ethics. The course will also discuss the problems facing the believer in a technological age with special attention given to subjects in law, finance, and counseling.

POST-GRADUATE COURSE DESCRIPTIONS

Christian Leadership Studies (LS)

Core Courses

- **LS 750 Spiritual Disciplines for Servant Leadership (5 hours)**
Scripture provides the foundation for and the model of servant leadership. In this course the student is confronted with a variety of readings and exercises that reveal both the spiritual vulnerability and strength of servant leaders. Each student will learn to practice the spiritual disciplines necessary to develop a servant's heart within the context of a Christian community.
- **LS 752 Developing Leadership Strategies (5 hours)**
Within the context of contemporary leadership concepts and theories, the student will discover his/her own personal strengths, leadership style, and find opportunity for growth. This course will also allow the student to explore the core values of effective Christian leaders.
- **LS 754 Theological Foundation for Biblical Leadership (5 hours)**
The student will use the dual disciplines of church history and biblical theology to define what constitutes "biblical leadership" in the 21st century.
- **LS 766 Biblical Leadership in a Multi-Culture, Multi-Ethnic Environment (5 hours)**
This course equips students for Christian ministry in diverse settings. It is designed to provide a strong foundation for ministry that makes provisions for the divergence in cultural, historical, sociological, and theological issues that impact the ministerial and leadership context.
- **LS 767 Global Awareness in Ministry (5 hours)**
Ministry, evangelism, and missions are studied in the context of a global church. Current models of outreach are examined to determine the effectiveness of each within a specific cultural context.

Electives

- **LS 761 Preaching with Power: Textual Integrity Motivating Applications (3 hours)**
Sharing God's word efficiently and effectively is essential for ministry. The students focus on the planning and execution of proper exegetical sermons for real life applications.
- **LS 762 Revitalizing God's People (3 hours)**
This course focuses on developing and casting a vision that will inspire a congregation to embrace change and take action to continue its work of evangelizing people and building the Kingdom of God.
- **LS 763 Administration and Non-Profit Organizations (3 hours)**
This course analyzes history, role, and function of governance in achieving the vision and mission of nonprofit organizations. Both governance and volunteer management issues are explored. The role of volunteers in all aspects of the work of the church will be examined.

- **LS 765 Models of Leadership in Modern Culture (3 hours)**
Using a blend of biblical and modern leaders, “real life” experiences are explored that teach essential truths that reach across time to speak to various situations in today’s world.

Dissertation (GE)

- **GE 701-709 Dissertation (1 hour each)**
A 16-week guided research course focused on the completion of the student’s dissertation. Dissertations should be designed and structured into chapters and demonstrate final draft quality in terms of content and style. Writing progress throughout the course will be in close consultation with the student’s dissertation mentor.
- **GE 710+ Dissertation Extension (as needed) (1 hour)**

DALLAS CHRISTIAN MINOR COURSE DESCRIPTIONS

Business – Sports Management

- **ACCT 2301 Accounting I (3 hours)**
An introduction to the financial accounting process, the four basic financial statements and how they work together to report the financial condition of a company. Students will understand how accounting information is prepared, and more importantly, how to use that information to make business decisions.
➤ **Prerequisite: MAT 201**
- **ACCT 2302 Accounting II (3 hours)**
A continuation of ACCT 2301 with an emphasis on revenue recognition, inventory, accounting for long-term assets and depreciation, long-term debt financing, and equity financing.
➤ **Prerequisite: ACCT 2301**
- **BUAD 2310 Principles of Business Administration (3 hours)**
An introduction to the process of managing and collaborating effectively with people. Emphasis is given to clarifying and sharpening management values, knowledge, and skills with special focus on decision-making, leadership, ethics, and quality.
- **MGMT 4304 Organizational Behavior Resp (3 hours)**
A study of the responsibilities of both manager and organization, including the social responsibility of an organization, public policy toward business organizations, and individual managerial ethics.
➤ **Prerequisite: BUAD 2310.**
- **MGMT 4308 Strategic Management (3 hours)**
A capstone course examining and formulating strategic goals, objectives, and policies to enhance organizational effectiveness, incorporating knowledge from all previous business courses into a

holistic demonstration of the importance of corporate strategic planning and management. (Can only be taken last semester of attendance.)

- **SPMT 2310 Introduction to Sports Management (3 hours)**
An introduction to the diverse field of sports management. Emphasis will be placed on the management principles related to the business of sports. It includes personnel, programs, marketing, media, financial management and a study of career possibilities in this growing field.
- **SPMT 3305 Sports Marketing (3 hours)**
An overview of marketing functions, marketing concepts, marketing research, and marketing ethics, including market segmentation and target marketing. Students study current sports marketing problems and apply marketing techniques to develop an effective sports marketing plan.
- **SPMT 3310 Principles of Sports Leadership**
A blend of research on leadership with practical application of the skills and knowledge that students will need on the job. This course provides sport management students with a comprehensive understanding of the complex topic of leadership in sport through a presentation of foundational and contemporary research, practical examples and exercises, and self-assessments. Prerequisites: BUAD 2310 and EN 151.
- **SPMT 3312 Sports Communication/Public Relations**
A study concentrating on the importance of effective verbal and written communications. Emphasis will be placed on the areas of communicating effectively interpersonally and within group and organizational settings. In addition, the area of public relations will be addressed, including both the media and the community. Prerequisites: EN 151 and SPMT 3305

Interdisciplinary Studies

- **INDS 3310 Critical Thinking Communication (3 hours)**
A course to develop and strengthen critical thinking and communication using logic, argument, readings in humanities, and communication of ideas. Prerequisite EN 151, EN 152, EN 201, BI 204
- **INDS 4310 Senior Interdisciplinary Seminar (3 hours)**
A directed research project guiding Interdisciplinary Studies majors in producing a final paper or project that integrates learning from biblical/theological studies and their two concentrations and has practical application; includes student presentations of the projects. Prerequisite: INDS 3310.

Psychology – Sports Psychology

- **PSYC 2305 Cognition and Emotion (3 hours)**
A study of the function of emotion, the structure of emotion, and the interplay between emotion, cognition, behavior, and physiology. Theories of emotion and cognition are discussed. Topics covered include emotion-range, complex emotions, and influence on reason. The roots of beliefs about thoughts and feelings including Plato, Aristotle, and the influence of classical philosophy of

mind/body separation on early cognitive psychology, as well as recent concepts from cognitive neuroscience are discussed.

- **PSYC 2320 Abnormal Psychology I (3 hours)**
A study of abnormal behavior. This class provides an overview of the history of abnormal behavior as well as an introduction to various mental disorders, emphasizing cause, treatment, and prevention. The course includes an overview of abnormal behavior from a diversity perspective. The development, assessment, and treatment of disorders is approached using major paradigms and research findings as they relate to a range of disorders as listed in the current DSM.
- **PSYC 2340 Sports Psychology (3 hours)**
This course examines psychological theories and research and their application to the sport/physical activity-related affect, behaviors, and cognitions of participants as well as the individual and environmental factors which shape these outcomes
- **PSYC 2345 Psychological Test/Research Methodology (3 hours)**
This course addresses standardization procedures, concept evaluation, item and test reliability and validity, indirect measurement issues, and ethics. Tests currently in use in psychological career fields are studied in depth. Projects on test development and interpretation are required. Prerequisite PS 201.
- **PSYC 3315 Theories of Personality (3 hours)**
A study of the major theoretical paradigms of personality, including psychoanalytic, trait, behavioral, and humanistic models. The student acquires an understanding of the major theories of personality along a continuum of scientific rigor, a thorough understanding of human commonalities and differences, mind/body connections, hereditary and experiential influences, psychopathology and treatment of personality disorders, self-knowledge, and applications to relationships with others. Writing assignments supplement assigned readings. Prerequisite PS 201
- **PSYC 3321 Pastoral Counseling (3 hours)**
An introduction to pastoral counseling showing how to integrate therapeutic principles with religious experience to foster a high standard of care. The course defines the functions of a pastoral counselor and discusses the historical development of pastoral counseling, different types of pastoral counseling, and issues involved in combining a faith tradition with therapeutic psychology. A Code of Ethics in pastoral counseling is provided, as well as a bibliography and online resources.
- **PSYC 3340 Abnormal Psychology II (3 hours)**
An advanced study of abnormal behavior emphasizing psychopathology and the causes of mental illness from a bio-psycho-social model and from a Christian worldview. Detailed examination is given to key disorders as listed in the current DSM alongside analysis of current research findings. Students are expected to develop understanding of the disruption of brain processes in mental disorders. Different theoretical models of psychopathology will be discussed. Students will gain

an appreciation for the complexity of human behavior and an increased compassion for individuals with mental illnesses. Prerequisite: PSYC 2320.

- **PSYC 4320 Psychology and Christian Thought (3 hours)**

An introduction to the nature and process of the application of Christian thought to the study and practice of psychology. Prerequisite: PS 201.

- **PSYC 4340 Psychology Capstone (3 hours)**

In this capstone course, students demonstrate the ability to use psychological concepts and skills in the examination of a college-wide general-education theme. Integrative papers, oral presentations, research projects, and class attendance are required. Students also begin formal preparation for graduate school or careers and perform program skills self-assessments. Required of all psychology majors. Prerequisite: must be a psychology major in the last semester of senior year.

Executive Board of Directors

Chair:

Denisha Hendricks

Vice- Chair:

Leah Scully-Mitchell

Douglas L. Hall

Eddie Hill

Montinique Cager

Harvey Smith

Patti Dobbins

Administration & Staff

LaTanya Tyson, Ph.D.

University of Phoenix

President

T. Tyrone Tyson, D. Min.

Payne Theological Seminary

Director of Recruitment & Development

Dean of Students and Athletic Director

Nneka Forsman, MFS

National University

Dean of Undergraduate Studies,

Institutional Research, & Compliance Director

Garriell Lucas, M.B.A.

Grand Canyon University

Director of Finance

Ronald Forsman, M.Ed

Florida Atlantic University

Dean of Online Education &

Alternative Programs

Paul Stennett

IT Director

PROGRAM CALENDAR

2024	Fall	ADP	08/19/2024	01/17/2025	5-week holiday/break
		AMP	08/19/2024	09/27/2024	
			10/07/2024	11/15/2024	
			12/02/2024	01/24/2025	2-week holiday
		ASAP/ACT	08/12/2022	12/06/2024	
2025	Spring	ADP	02/03/2025	06/13/2025	3-week holiday
		AMP	02/03/2025	03/14/2025	
			03/24/2025	05/02/2025	
			05/12/2025	06/16/2025	
		ASAP/ACT	01/06/2025	05/02/2025	
	Summer	AMP	06/30/2025	08/04/2025	1-week holiday
		ASAP	06/02/2025	08/01/2025	1-week holiday
	Fall	ADP	08/18/2025	01/09/2026	5-week holiday
		AMP	08/18/2025	09/22/2025	
			10/06/2025	11/10/2025	
			12/01/2025	01/12/2026	
		ASAP/ACT	08/11/2025	12/05/2025	
2026	Spring	ADP	01/26/2026	06/05/2026	3-week holiday
		AMP	01/26/2026	03/02/2026	
			03/16/2026	04/20/2026	
			05/04/2026	06/08/2026	
		ASAP/ACT	01/05/2026	05/01/2026	1-week holiday
	Summer	AMP	06/22/2026	07/27/2026	
		ASAP/ACT	06/01/2026	07/31/2026	1-week holiday

ADP = Post graduate program {D. Min.; Doctor of Ministry}

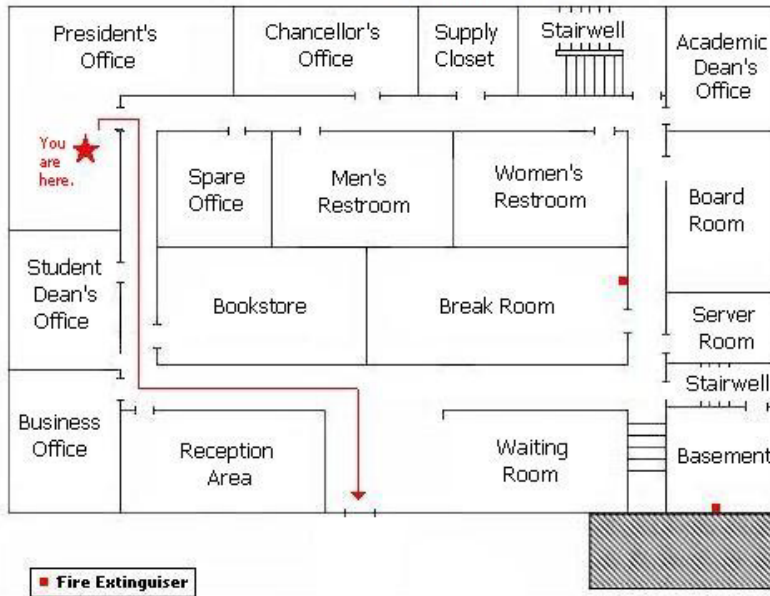
AMP = Graduate program {M.R.E.; Master of Religious Education}

ASAP = Undergraduate program {A.A. or B.A.; Associate of Arts in Ministry or Bachelor of Arts in Ministry}

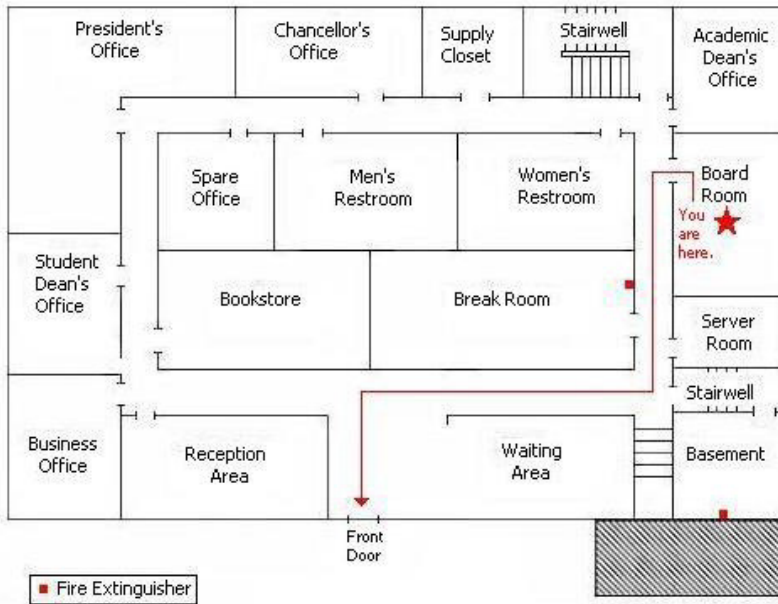
ACT = Certificate program {Certificate of Biblical Studies}

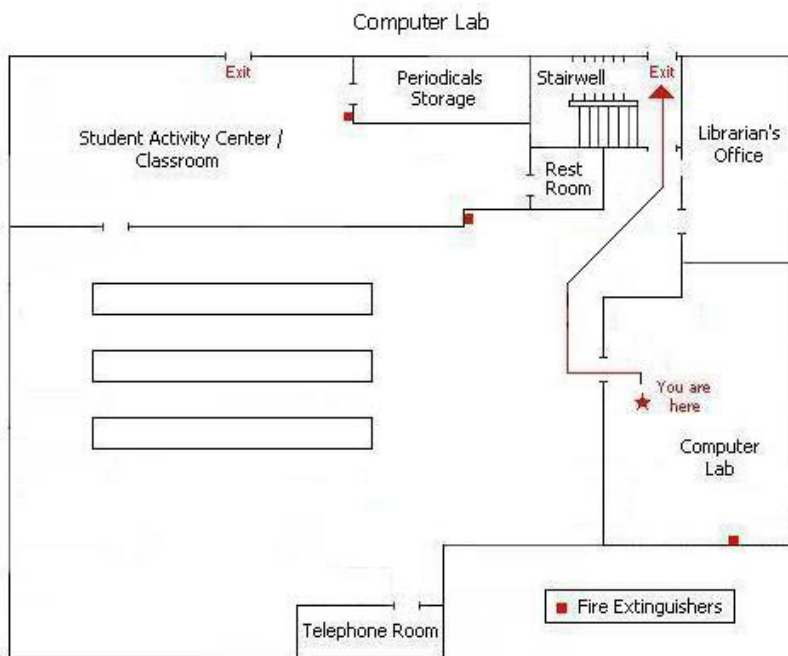
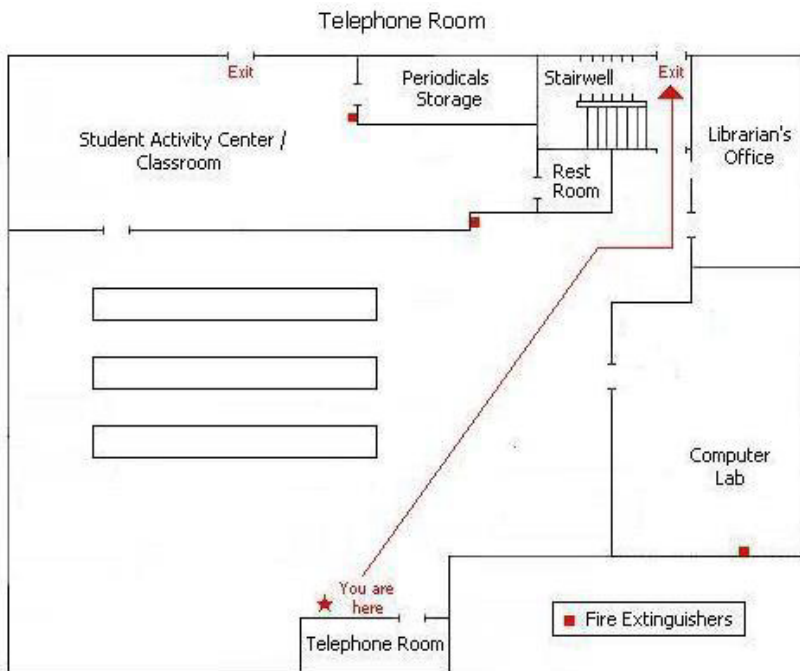
Floor Plans

Main Floor - President's Office



Main Floor - Board Room





Carolina Christian College
 4209 Indiana Avenue
 P.O. Box 777
 Winston-Salem, NC 27102
 Phone: (336) 744-0900
 Fax: (336) 744-0901
 www.carolina.edu
 Email: frontoffice@carolina.edu