

# FamiliesFirst

## SERVICE & MERCHANDISE **PRICE LIST**

*These prices are effective as of May 6, 2025*



WE CELEBRATE LIFE

### MANAGING DIRECTORS

**Jessica Sylvestre**  
3260 Dougall Ave.  
South Windsor  
N9E 1S6  
Business Code: 267

**Tara Breckles**  
1065 Lauzon Rd.  
East Windsor  
N8S 3M8  
Business Code: 1032

**Tara Breckles**  
2130 Front Rd.  
LaSalle  
N9J 2B9  
Business Code: 766

**John Vettese**  
585 Sandwich St. S.  
Amherstburg  
N9V 0E2  
Business Code: 1173

**Families First Funeral Home & Tribute Centre Inc.**

*A division of Service Corporation International (Canada) ULC*

**519.969.5841**  
**FAMILIESFIRST.CA**

*"The staff at Families First Funeral Home and Tribute Centre is committed to your complete satisfaction. We pride ourselves on the quality of our service and our dedication to the community."*

## OUR COMMITMENT TO YOUR FAMILY - 100% SERVICE GUARANTEE

- We will answer your questions in a clear and understandable manner.
- We will ensure that the arrangements you make meet with your individual wishes.
- We will explain the value and benefit of all available options.
- We will explain prices and payment methods to your satisfaction.

All of us at Families First are directly involved with the families and community with which we serve. Our relationship with the community motivates each of us to devote ourselves to serving our families' and community's needs, offering the highest quality of service. As residents of this community, we strive to build long-term relationships with families in our community. We are committed to continuing to serve families even after their funeral celebrations are complete. We are proud to help the community in which we live. We are lead sponsors of the Windsor Goodfellows Families First Breakfast Program, which provides breakfast for more than 1,400 children locally, each day. We are honoured to demonstrate our continued commitment to our community by participating in many local organizations and charitable events that directly help our local community be a better place to live and raise our families.

## PERSONALIZATION

Helping you celebrate the life of your loved one without having to make complicated decisions is important to you. Our in-house Graphics Team will help you create custom tributes and personalize these to reflect those things that were important to you and your family. Some of the custom tributes offered:

- |                   |                             |
|-------------------|-----------------------------|
| • MEMORIAL CARDS  | • LIFESTORY BOOK            |
| • GUESTBOOK       | • PREMIUM REMEMBRANCE CARDS |
| • MEMORIAL INSERT | • CUSTOM CANVAS             |
| • MEMORIAL VIDEO  | • ORDER OF SERVICE FOLDERS  |
| • MEMORIAL USB    | • PHOTO ENLARGEMENT         |

## OUR CHILDREN'S PROGRAM

We appreciate that at the most difficult time of your life, properly preparing children for their first experience with the death of a loved one is difficult. Please know that our Team is here to help you. Following an interactive discussion with your children, we show them practical aspects of the funeral home, such as caskets and funeral vehicles, allowing them to physically touch and even open them. We acknowledge that with children, it is important to eliminate the "mystery" of the funeral process, so that their imagination does not replace that which is fact. We encourage children to draw pictures, write letters, or bring in articles that remind them of the person who died. Children can act as honorary pallbearers, participate in readings, or have a role in expressing their feelings during the funeral.

## OUR WEBSITE

Our website is designed to allow family and friends to support you in your immediate grief and long term bereavement.

Beneficial key features include:

- Online donation assistance
- Google maps to provide directions to the Funeral Home, Church or Cemetery
- Visitation, service location details
- Obituary notice
- Online condolences

## ESTATE BENEFIT SERVICES

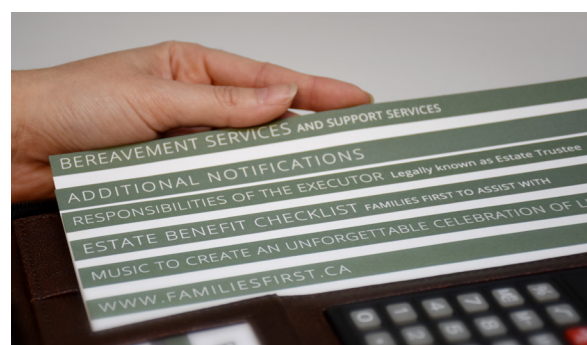
After the death of your loved one, you are often left with the responsibilities that may seem insurmountable. Putting these tasks off can often delay benefits to a surviving spouse or child. In order to help your family complete these tasks in a timely manner, Families First will:

- Complete the application for Canada Pension Plan Lump Sum Death Benefit.
- Complete the application for Canada Pension Plan monthly Survivor's Pension.
- Complete the application for Canada Pension Plan monthly Children's Benefit.
- Obtain and complete life insurance claimant forms.
- Obtain and complete employer health, life insurance and pension forms.
- Give notification and supply Certificates of Death to any bank, trust company, union, etc.
- Deliver all completed forms to their required locations.
- Complete any other services you may require.



Family and friends can:

- SHARE PHOTOS
- SEND CONDOLENCES
- SHARE STORIES
- SEND FLOWERS
- SHARE IT ON
- FACEBOOK & TWITTER
- OBTAIN DIRECTIONS



We also will provide you with an Estate Benefit Portfolio which aids in keeping your tasks, information and papers organized. This Portfolio also contains helpful information that you may need after the death of your loved one, such as our Estate Benefit Checklist, Responsibilities of the Executor, Addition Notifications, and Bereavement and Support Services.

Fee: Estate Benefits are free of charge when purchasing services, facilities and merchandise from Families First.

**\$395**

## OTHER AVAILABLE SERVICES & EQUIPMENT

<b>Removal of Pacemaker or Implant</b>	<b>\$185</b>
<b>Professional restorative procedures</b>	<b>\$75/HOUR</b>
Plus Size individuals, additional staff and specialized equipment are required.	FROM \$250
<b>Additional (holiday &amp; weekend fees)</b>	
Staff services for a ceremony on Saturday	\$495
Staff services for a ceremony on a Sunday or Statutory Holiday	\$855
Staff services for visitation on a Sunday or Statutory Holiday per visitation period up to 3 hours.	\$495
<b>Rental Flowers</b>	
Family Time	\$45
One Visitation Period	\$125
Two or More Visitation Periods	\$285
<b>Reception Facilities</b>	\$425
<b>Reception Hostess</b>	\$165
<b>Pallbearer Fee</b>	\$125
<b>Additional Visitation Facilities</b>	
Rooms 2+3 or 4+3 (Lauzon Rooms 1+2 or 3+4)	\$395
Rooms 2+1 or 4+5 (Lauzon Rooms 2+3)	\$595
Rooms 1+2+3 or 3+4+5 (Lauzon Rooms 1+2+3 or 2+3+4)	\$1,595
Rooms 1+2+3+4 or 2+3+4+5 (Lauzon all rooms)	\$4,350
Exclusive use of all 5 rooms (Dougall)	\$15,500
<b>Repatriation/Shipping of Remains</b>	
<b>Border Crossing Transfer</b> - Additional for transfer to or from the Detroit Area & clearing Customs. This service requires initial transfer. Registration of death, plus Certified Copies of Death at cost.	\$395
<b>Ship In service charges</b> - <i>Domestic</i> - Applicable when death occurs in Canada and flights or rail arrival in Windsor. Airfare or other transportation and agent fees at cost.	\$345
<b>International Ship-In Service Charge</b> applicable to flight arriving to YQG or DTW. Known shipper & clearing customs as required. This service requires initial transfer. Registration of death, plus Certified Copies of Death and agent fees at cost.	\$990
<b>Coordination Fee for International Ship-Out</b>	\$775
<b>Ship Out cremated remains</b> - <i>Domestic</i>	\$295
<b>Ship Out cremated remains</b> - <i>United States</i>	\$345



<b>1/2 Glass Sealer</b> Custom sealer may be required in some countries.	\$995 - \$1,500
<b>Air Tray</b>	\$495
<b>Additional mileage</b> When traveling beyond 30 km from our facility, a charge of \$2.00/\$2.50 per kilometer, cost based on distance and charged per kilometer both ways from funeral home. To and from destination will apply. Plus use of service vehicle or funeral coach at \$350	\$2.00/PER KM (SERVICE VEHICLE) \$2.50/PER KM (FUNERAL COACH)
<b>Estate Fraud Protection</b> With this, fraud specialists will notify the credit reporting agencies to help protect the estate from security breaches.	\$135
<b>Holding Cremated Remains - Refundable Deposit</b>	\$350
<b>Audio Visual Equipment Rental</b>	\$165
<b>Equipment for visitation at a remote location</b>	\$195

## ADDITIONAL TRIBUTE ITEMS AND SERVICES

<b>VHS conversion to DVD of whole tape - <i>no editing</i></b>	\$65/TAPE
<b>Additional Copies of the Video Tribute on USB - <i>all JPG images included</i></b>	\$90
<b>Additional Copies of the Video tribute - <i>on DVD</i></b>	\$30
<b>Canvas Portraits</b>	\$90 - \$300
<b>Prayer Cards (per 100 copies)</b>	\$45
<b>Service Folder (per 100 copies) - <i>colour printing, cover &amp; inside one page folded</i></b>	\$225
<b>Service folders (per 100 copies) - <i>black &amp; white printing, cover &amp; inside one page folded</i></b>	\$185
<b>Recording of Service - <i>with editing, upload to website upon request</i></b>	\$375
<b>Basic Record &amp; Upload - <i>Recorded from Funeral Home or Church &amp; uploaded</i></b>	\$195

The applicable taxes are in addition to the price of service, facility or merchandise.

## BASIC STATIONERY PACKAGE

Guest book solid wood with themed pages, up to 20 photos, engraved	\$175
Laser engraving of guestbook cover	\$45
Themed memorial cards (up to 100)	\$295
Thank you notes & envelopes (up to 60)	\$45
Portfolio bag, caring for donations, memory cards	\$25

Memorial website, family login 2 years	\$75
Repair, crop and enhance main photos	\$70



Total \$720  
Savings \$170

Package Price  
**\$550**

## STANDARD STATIONERY PACKAGE

Basic package	\$720
Personalized theme from family photos	\$175
Creation of Memorial Video – up to 90 Photos	\$295
1 DVD or 1 USB with Memorial Video	\$40
Creation of LifeStory Book and one copy – up to 90 Photos	\$365
Upgraded Thank You Cards	\$35
Audio/Visual Equipment	\$125.00



Total \$1,621.45  
Savings \$826.45

Package Price  
**\$795**

## SIGNATURE STATIONERY PACKAGE

Standard Tribute package	\$1,621.45
Customization of graphics we create (photos, sizes, video clip etc.)	\$322
Up to 40 additional photos to custom video & Lifestory Book	\$90
Memorial Insert	\$345
2 Photo Enlargements (mounted on foam board)	\$170
1 USB with memorial video file and digital photos	\$69.95



Total \$2,618.40  
Savings \$1,628.40

Package Price  
**\$990.00**

# GENERAL PRICE LIST

These prices are effective as of May 6, 2025.

Applicable taxes are additional.

The services explained below are those we can provide to the families that we serve. You may choose only those items you desire. There are many factors in determining a fair charge for services. The following components are taken into consideration but not limited to, when fees are established: Facilities, Staff, Equipment, Automobiles, Utilities, and Insurance, Taxes, Office Supplies, Licensing Fees, Building and Property Maintenance.

The following three sections explain the component parts of the Service Offerings.

---

## PROFESSIONAL STAFF & SERVICES

### Coordinating activities, rites, ceremonies

Professional consultation with licensed personnel, including, but not limited to, expert advice on options to meet your needs. Coordination of all activities, rites and ceremonies, before, during and after they have been provided, including services and supplies provided by us, as well as those provided by third-party suppliers, such as flowers and death notices. Personnel are available 24 hours a day, 365 days a year to respond to the initial call.

Coordinating Activities, Rites and Ceremonies for Full Service	\$3,450
Coordinating Activities, Rites and Ceremonies for Service of Remembrance	\$3,450
Coordinating Activities, Rites and Ceremonies for Graveside Service	\$2,880
Coordinating Activities for Gathering Celebration	\$2,375
Coordinating Activities for Urn Committal	\$1,825
Coordinating Activities for Forwarding Remains	\$1,795
Coordinating Activities for No Service Option	\$1,585
Staff Services for Urn Committal	\$200

(Our services include accompaniment of remains to cemetery, supervision of service, and staff to assist with the service.)

<b>Registration and Documentation</b>	\$415
---------------------------------------	-------

Completion and filing of all documents necessary to carry out the services and supplies requested, including, but not limited to, death registration, burial permit, coroner's certificate for cremation and documentation necessary to ship the body out of the country. Provision of Proofs of Death issued by our location (our Proofs of Death are usually accepted for most estate settlement purposes, but sometimes a provincial "Death Certificate" will be necessary and is available from the Office of the Registrar General).

<b>Basic Preparation of Remains</b>	\$415
-------------------------------------	-------

Requires facilities for preparation/embalming/shelter. The preparation of the body for placement into the casket or cremation container. This may include cleansing, dressing or shrouding and may also include setting of facial features or identification or viewing. This does not include embalming. There is no charge for the removal of pacemakers and radioactive implants.

<b>Embalming of Remains</b>	\$525
This fee is in addition to basic preparation. Embalming is the process of replacing blood and bodily fluids with chemical preservatives. It is a process of sanitation, restoration and temporary preservation. Autopsy embalming and restorative practices are included in this fee. Embalming is not legally required, but may be recommended to preserve the body between the time of death and the visitation or disposition of the deceased. Our professional funeral directors will make a recommendation based on the condition of the body and expected service needs.	

---

## FACILITIES AND SUPERVISION

<b>Use of Facilities for Embalming and Preparation</b>	\$355
Facilities used to prepare, embalm and shelter the body.	
<b>Supervision of Visitation First Day</b>	\$470
Staff to coordinate and oversee the visitation or informal gathering (per day). Our services include setup of visitation area, placement of encased remains, display of floral arrangements, supervision of and attendance during the visitation.	
<b>Facilities for Visitation</b>	\$590
Requires staff services for visitation and designated facilities used for visitation.	
<b>Supervision of Funeral Service</b>	\$550
Staff to oversee the ceremony in our facility or at another facility.	
<b>Supervision of Memorial Service</b>	\$550
Staff to oversee the ceremony in our facility or at another facility.	
<b>Supervision of Graveside Service</b>	\$780
Our services include accompaniment of remains to cemetery, supervision of graveside service and staff to assist with the service.	
<b>Basic Venue</b>	\$450
Basic Venue for Service or Gathering	
<b>Standard Venue</b>	\$475
Standard Venue for Service or Gathering	
<b>Premium Venue</b>	\$550
Premium Venue for Service or Gathering	
<b>Off-Site Venue</b>	\$850
Off-Site Venue & Staff Services	
<b>Exclusive Venue</b>	\$1,100
Signature Exclusive Venue	
<b>Simple Gathering</b>	\$695
Venue and Staff Services to coordinate a Simple Gathering.	



---

## TRANSPORTATION

Transfer of remains from place of death to funeral home	\$525
(within a 30 kilometre radius. Additional distance will be charged at \$1.85 per kilometre.)	
Limousine	\$300
(within a 30 kilometre radius. Additional distance will be charged at \$1.85 per kilometre.)	
Transfer to or from crematory	\$125
Transportation of decedent to cemetery or crematory	\$395
(within a 30 kilometre radius. Additional distance will be charged at \$1.85 per kilometre.)	

## SERVICE OFFERINGS

---

### FULL SERVICE

Coordinating Activities, Rites and Ceremonies for Full Service	\$3,450
Registration and Documentation	\$415
Embalming	\$525
Basic Preparation of Remains	\$415
Supervision of Visitation First Day or part thereof	\$470
Supervision for Funeral Service	\$550
Use of Facilities for Embalming and Preparation	\$355
Use of Facilities For Visitation First Day or part thereof	\$590
Transfer of remains from place of death to funeral home	\$525
(within a 30 kilometre radius. Additional distance will be charged at \$1.85 per kilometre.)	
Funeral vehicle (e.g. Hearse)	\$395
(within a 30 kilometre radius. Additional distance will be charged at \$1.85 per kilometre.)	
Estate Fraud Protection	\$135
Premium Venue at our location for Service or Gathering	\$550
TOTAL	\$8,375

---

### SERVICE OF REMEMBRANCE

Coordinating Activities, Rites and Ceremonies for Service of Remembrance	\$3,450
Registration and Documentation	\$415
Basic Preparation of Remains	\$415
Supervision of Memorial Service	\$550
Use of Facilities for Embalming and Preparation	\$355
Transfer to or from crematory	\$125
Transfer of remains from place of death to funeral home	\$525
(within a 30 kilometre radius. Additional distance will be charged at \$1.85 per kilometre.)	
Estate Fraud Protection	\$135
Premium Venue at our location for Service or Gathering	\$550
TOTAL	\$6,520

---

## GRAVESIDE SERVICE

Coordinating Activities, Rites and Ceremonies for Graveside Service	\$2,880
Registration and Documentation	\$415
Basic Preparation of Remains	\$415
Supervision of Graveside Service	\$780
Use of Facilities for Embalming and Preparation	\$355
Transfer of remains from place of death to funeral home (within a 30 kilometre radius. Additional distance will be charged at \$1.85 per kilometre.)	\$525
Funeral vehicle (e.g. Hearse) (within a 30 kilometre radius. Additional distance will be charged at \$1.85 per kilometre.)	\$395
Estate Fraud Protection	\$135
TOTAL	\$5,900

---

## URN COMMITTAL OPTION

Coordinating Activities for Urn Committal	\$1,825
Registration and Documentation	\$415
Basic Preparation of Remains	\$415
Staff Services for Urn Committal (Our services include accompaniment of remains to cemetery, supervision of service, and staff to assist with the service.)	\$200
Sheltering of remains	\$250
Transfer to or from crematory	\$125
Transfer of remains from place of death to funeral home (within a 30 kilometre radius. Additional distance will be charged at \$1.85 per kilometre.)	\$525
Private Family Moment at our facility for a limited time with limited family members	\$895
Estate Fraud Protection	\$135
TOTAL	\$4,785

---

## NO SERVICE OPTION

Coordinating Activities for No Service Option	\$1,585
Registration and Documentation	\$415
Basic Preparation of Remains	\$415
Sheltering of remains	\$250
Transfer to or from crematory	\$125
Transfer of remains from place of death to funeral home (within a 30 kilometre radius. Additional distance will be charged at \$1.85 per kilometre.)	\$525
Estate Fraud Protection	\$135
Private Family Moment at our facility for a limited time with limited family members	\$895
TOTAL	\$4,345

---

---

## CATERING

A wide variety of catering menus are available to choose from.

---

## FLORAL TRIBUTE

A wide variety of floral arrangements are available to select from.

---

## FAMILY SUPPORT OPTIONS

Timeless Touch Fingerprint	\$295
Medallion Bundle	\$295
Legal Service Plan	\$295
Family Estate Manager	\$295

## MISCELLANEOUS SERVICES AND MERCHANDISE

Product Name	Item Code	Retail Price
<b>1. Additional charge - Use of Facilities on Weekends</b> Additional charge for Use of Facilities and Staff on Weekends	<b>SRVWECHG</b>	\$495
<b>2. Basic Venue Service</b> Basic Venue at our location for Service or Gathering	<b>FACFBVFS</b>	\$450
<b>3. Dignity® Celebrant</b> Certified officiant for the service.	<b>DGSDIGCT</b>	\$395
<b>4. Premier Stationery Package</b> Complete Custom Personalization of Register Book, Memorial Folders and Thank You Cards.	<b>XSMOTOR9Z</b>	\$995
<b>5. Memory Portrait</b> Create a lasting tribute to your loved one with a favourite photograph reproduced on canvas in the style of an oil painting. The Memory Portrait includes three frame selection choices - Elegance, Contemporary or Classic.	<b>XPRPPFN</b>	\$295
<b>6. Signature Exclusive Venue</b> Exclusive Venue at our location for Service or Gathering	<b>FACFSEVC</b>	\$15,500
<b>7. Families First Crematorium Crematory Fee</b> Families First Crematorium Crematory Fee	<b>CRM03236</b>	\$825
<b>8. Family Estate Manager</b> Family Estate Manager is a comprehensive, step-by-step tool that simplifies the decisions you'll make as you settle your loved one's estate. This tool provides immediate access to legal professionals that will save you time, notify interested parties, and maximize the value of your estate.	<b>XOTXMBK</b>	\$295
<b>9. Holding Ashes</b> Holding of ashes for One Year from date of cremation - Refundable deposit.	<b>SRVSERMI</b>	\$350
<b>10. Limousine</b> Limousine (within a 30 kilometre radius. Additional distance will be charged at \$1.85 per kilometre.)	<b>VHCLIMOS</b>	\$300
<b>11. Premium Venue Service</b> Premium Venue at our location for Service or Gathering	<b>FACFPVFS</b>	\$550
<b>12. Private Family Moment at our Facility</b> Private Family Moment at our facility for a limited time with limited family members.	<b>SRVPRIVC</b>	\$895
<b>13. Professional Pallbearer</b> Professional Pallbearer (per person)	<b>SRVPLLBR</b>	\$125
<b>14. Retractable Floor Banner</b> Retractable Floor Banner	<b>XSMCCZ09Z</b>	\$395
<b>15. Genealogical Search per Decedent</b> Review of the historical funeral home records for names and dates.	<b>SRVGSPD</b>	\$50
<b>16. Security Banding</b> Security Banding For Shipping	<b>XSRSEBAN</b>	\$450
<b>17. Celebration of Life Events Taxable</b>	<b>XSRCLTAX</b>	\$1,500



---

## MISCELLANEOUS SERVICES AND MERCHANDISE(continued...)

Product Name	Item Code	Retail Price
Services provided to those families whose loved one's disposition took place elsewhere.		
<b>18. Sheltering of Remains Charge Per Day</b>	<b>FACSRCPD</b>	\$95
Sheltering of Remains Charge, Per Day		
<b>19. Single Small Medallion Case/240489</b>	<b>XFDDCBR</b>	\$65
Single Small Medallion Case		
<b>20. Standard Venue Service</b>	<b>FACFSVFS</b>	\$475
Standard Venue at our location for Service or Gathering		
<b>21. Supervision of Off-Site Venue</b>	<b>SPVOFFSV</b>	\$1,100
Supervision of Off-Site Venue		
<b>22. Funeral Director's Statement of Death</b>	<b>XSRFDSOD</b>	\$25
This is an acceptable document in assisting with estate settlement.		
<b>23. Retractable Table Banner</b>	<b>XPARNRY1</b>	\$295
This Table Banner brings a beautiful touch to services by showcasing up to 4 pictures of your loved one with a personalized design from the selection album and has the option of generating a QR code leading to the online version of the memory cards or folders that is selected. (QR code available day of first funeral event plus three weeks. Online program is viewable but cannot be forwarded, transferred or printed. 11.75" x 17")		
<b>24. Legal Service Plan</b>	<b>XSRDMLSP</b>	\$295
To help in the process of settling someone's estate, we offer unlimited 24/7 telephone consultations with our team of experienced estate lawyers. Benefits include a 12-month membership following the death, as well as legal support for other areas of practice including family, employment and residential real estate.		
<b>25. Triple Small Medallion Case/240490</b>	<b>XFDDCBT</b>	\$95
Triple Small Medallion Case		
<b>26. Estate Fraud Protection</b>	<b>DOCESFRP</b>	\$135
With Estate Fraud Protection, fraud specialists will notify the credit reporting agencies to help protect your loved one's estate from security breaches.		

---

## STATIONERY

Product Name	Item Code	Retail Price
<b>1. Premier Stationery Package</b>	<b>XSMOTOR9Z</b>	\$995
Complete Custom Personalization of Register Book, Memorial Folders and Thank You Cards.		

---

## CASH ADVANCES

Bereavement Authority of Ontario Consumer Protection Fee for Crematories	\$30
Bereavement Authority of Ontario Consumer Protection Fee for Funerals	\$30
Clergy Honorarium	As Selected
Newspaper Notice	As Selected
Organist	As Selected
Cemetery Fees	As Selected
Coroner Fee	As Selected
Permit and/or Government Fees	As Selected
Soloist	As Selected

---

## FORWARDING OF REMAINS TO ANOTHER FUNERAL HOME

Coordinating Activities for Forwarding Remains	\$1,795
Registration and Documentation	\$415
Embalming	\$525
Transfer to or from airport (within a 30 kilometre radius)	\$450
Transfer of remains from place of death to funeral home (within a 30 kilometre radius)	\$525
Administration duties required to coordinate shipping of remains	\$1,160
Transport Canada Screening Requirements for Shipping	\$325
TOTAL	\$5,195

Additional information is available on request.

---

## Information Regarding Terms and Conditions when entering into a Contract

**Payment terms:** Payment is required to be made by the date of the service, if not paid in full by such date a DEFAULT CHARGE OF TWO (2%) PER MONTH (ANNUAL PERCENTAGE RATE OF TWENTY-FOUR (24%) PERCENT) will be charged on any portion of the unpaid balance due. It is agreed that any additional items ordered in conjunction with those items listed will be paid at the time ordered. If suit is brought for the collection of said amount, or any portion thereof, you agree to pay a reasonable attorney's fee to be affixed by the Court and included in the judgment in such suit.

**Cancellation Rights:** The purchaser, or someone designated by the purchaser, may cancel an agreement by providing notice of the cancellation in writing to the Provider. A partial or full refund of money paid, if any, may be available based on the terms of the agreement and the law. Any refund owed will be issued within 30 days.

If the agreement meets all of the requirements of the Act and is cancelled within 30 days of the agreement date and before any services or supplies have been provided, the Provider will refund all amounts paid under this agreement in accordance with the Act.

If the agreement meets all of the requirements of the Act and is cancelled after 30 days of this agreement date and before any services or supplies have been provided, the Provider will refund the amount paid under the agreement plus any income earned on the amount paid or that should have been earned on the amount paid if it had been deposited as required, but the Provider may retain an additional 10% of the amount paid to a maximum of \$350.

If the agreement meets all of the requirements of the Act and is cancelled after some of the services or supplies have been provided as directed under the terms of this agreement, the maximum refund required will be the amount paid under the agreement plus any income earned on the amount paid or that should have been earned on the amount paid if it had been deposited as required, and in some circumstances permitted by the Act the Provider may retain the value of the services and supplies that have been delivered.

If the agreement fails to meet the requirements of ss.40(1) of the Act, the maximum refund required will be the amount paid under the agreement plus income earned on the amount paid or that should have been earned on the amount paid if it had been deposited as required. In some circumstances permitted by the Act, the Provider may retain the value of the services or supplies that have been delivered.

**Possession of Cremated Remains and Refundable Deposit:** When cremation is selected the Provider may require the purchaser to pay a refundable deposit of \$350. The Provider will retain the cremated remains for one year from the date of cremation. If the cremated remains are not claimed within one year, the Provider may inter the cremated remains in a cemetery, including in a common lot for which the cemetery is the interment rights holder, and the Provider may retain the deposit referred to in this section. If the cremated remains are claimed before they are interred, the operator will refund any deposit paid.

**Warranties:** No claims are made to you as to the merchandise or other offerings of the Provider (embalming, casket, outer burial container) to the effect that embalming or the use of any merchandise available from this funeral home will delay the decomposition of the human remains for a long term or indefinite time, or that any such merchandise will protect the body from gravesite substances if such was not the case. No representations or warranties are made to you about the protective features of caskets or outer burial containers other than those made by the manufacturer.

## Prepayment Options

For your convenience, we offer two funding options when prepaying services or supplies. When prepaying, you pay for the services and supplies today and the money will be used to pay for the services and supplies when they are delivered at the time of death.

**Trust:** You may pay the money directly to us and we will place it in trust, where it will accrue interest until the contract is fulfilled (when the services and supplies are delivered) or the contract is cancelled.

**Investment of Funds:** Within 35 days, the payment(s) to the Provider, less the permitted amount defined below, will be placed and held in a pooled trust fund or an individual trust account for the purchaser until the services and supplies are provided or this agreement is cancelled and a refund is issued in accordance with the terms of this agreement. If the money is invested in a pooled trust fund, the money will be invested and held by a third party trustee. If the money is invested in an individual trust account, the money will be held in a guaranteed investment certificate.

**Permitted Amount:** On or after the 31st day after the day on which an agreement was made, the Provider may retain 10% of the agreement price (or amount paid, whichever is lower) up to a total maximum of \$350. This amount need not be invested in trust and if retained, is a credit against any amount the operator may retain if the agreement is cancelled.

**Value of Trust Once per Year:** Once in a year, if the purchaser requests, the Provider will provide information about the amount in trust and how it is invested. If the money is in an individual trust account, the purchaser will receive a statement that sets out: the current value of the account(s) as of the end of the month before the request, the name of the depository, and the name or type of investment in which the payment(s) have been placed. If the money is held in a pooled trust fund with a third party trustee, the purchaser will receive a statement that sets out the name of the trustee and the current value of the purchaser's money as of the end of the month before the request.

**Insurance:** You may purchase an insurance contract where the proceeds of the insurance contract will be used to pay for the services or supplies at the time they are delivered or the contract is cancelled.

**Details of Insurance Contract:** The Purchaser agrees to purchase an annuity or life insurance policy ("Policy") through the Insurance Company selected by Service Corporation International (Canada) ULC and assign said Policy to the Provider.

**Provision of Goods and Services:** The services and merchandise selected in prepaid agreement will be sold at the time of death pursuant to a funeral service order/purchase agreement between the Provider and the representative(s) of the Recipient at that time. The Funeral Home guarantees that the amount to be charged for providing the Goods and Services selected and the Third Party Items of the Funeral Goods and Services Agreement will not exceed the death benefit under the Insurance Policy at the time of death of the Recipient, if the Provider's then current retail price of the funeral goods and services selected is less than the amount payable under the Annuity or Insurance Policy, the Provider will refund the difference to the Annuity or Insurance Policy Beneficiary. The amount applicable to taxes is determined on the basis of the applicable tax laws in effect at the date this Agreement is signed. In the event the taxes due at the date of death are greater than those specified in this Agreement, the Provider will charge the difference at that time.

**Cancellation:** The purchaser, or someone designated in this agreement by the purchaser, may cancel the agreement by providing notice of the cancellation in writing to the Provider. Before the death of the Recipient, but after the death of the Purchaser, the Recipient or his/her personal representative may cancel the Agreement. After the death of the Recipient, the Recipient's personal representative may cancel the Agreement at any time before the goods and services have been provided. In the event of the cancellation of the Agreement prior to the death of the Recipient, they may request cancellation or surrender of the Policy according to the policy terms. If the Agreement is cancelled after the death of the Purchaser, but prior to the Recipient's death, the benefit will be



paid in accordance with the terms of the Policy.

If the funeral goods and services are not provided by the Provider or any provider affiliated with or owned by SCI (Canada) ULC, the Agreement is cancelled and a payment will be made in accordance with the Policy.

If the agreement meets all of the requirements of the Act and is cancelled after some of the services or supplies have been provided as directed under the terms of the agreement, the maximum refund required will be the amount to be paid out under the terms of the insurance contract, and in some circumstances permitted by the Act the Provider may retain the value of the services and supplies that have been delivered.

If this agreement fails to meet the requirements of ss.40(1) of the Act, the maximum refund required will be the amount paid under this agreement plus income earned on the amount paid or that should have been earned on the amount paid if it had been deposited as required. In some circumstances permitted by the Act, the Provider may retain the value of the services or supplies that have been delivered.

Additional information about funding, payment and finance options is available upon request.

# PACKAGE PRICE LIST

These prices are effective as of May 6, 2025.  
A Division of Service Corporation International (Canada) ULC.

## DIGNITY MEMORIAL HERITAGE FUNERAL SERVICE

<b>The Service</b>	> Coordinating Activities, Rites and Ceremonies for Full Service	\$3,450
	> Registration and Documentation	\$415
	> Embalming	\$525
	> Basic Preparation of Remains	\$415
	> Supervision for Visitation First Day	\$470
	> Supervision for Funeral Service	\$550
	> Use of Facilities for Embalming and Preparation	\$355
	> Use of Facilities For Visitation - First Day	\$590
	> Transfer of remains from place of death to funeral home	\$525
	> Funeral Vehicle	\$395
	> Reception and Hostess	\$425
	> Dignity Heritage Burial Flowers	\$750
	> Estate Fraud Protection	\$135
	> Premium Venue Service	\$550
	> Select 1 Plan Support Option	\$295
<b>Family Support Options</b>		
<b>Recommended Caskets</b>	Choose one of the following:	\$4,399
	> Victoriaville Victoria Cherry	
	> Batesville Rosette	
	> Victoriaville Briar Hill	
	> Batesville Camden Oak	
<b>Recommended Outer Burial Container</b>	> Wilbert Venetian Vault	\$2,495
<b>Events</b>	> Catered Receptions IV	\$995
<b>Additional Products</b>	> Premier Stationery Package	\$995

		Without OBC	With OBC
TOTALS	Total Package Price	\$16,234	\$18,729
	Package Savings	\$690	\$690
	Package Price with Savings	\$15,544	\$18,039
	Package Price without Catering	\$14,549	\$17,044

\* The caskets, outer burial container, urns and catering are recommendations only. You are not required to purchase these or any other casket, outer burial container, urn or catering as part of this offering. Embalming is also declinable. A complete description of the FAMILY SUPPORT OPTIONS can be found in the Service Section and Miscellaneous Service and Merchandise section of the price list. The price for flowers and / or catered receptions included in packages provides a "credit" towards the selection of any floral arrangement (chosen by the family); or any variation of items selected from the catering menu.

## DIGNITY MEMORIAL HONOUR FUNERAL SERVICE

<b>The Service</b>	> Coordinating Activities, Rites and Ceremonies for Full Service	\$3,450
	> Registration and Documentation	\$415
	> Embalming	\$525
	> Basic Preparation of Remains	\$415
	> Supervision for Visitation First Day	\$470
	> Supervision for Funeral Service	\$550
	> Use of Facilities for Embalming and Preparation	\$355
	> Use of Facilities For Visitation - First Day	\$590
	> Transfer of remains from place of death to funeral home	\$525
	> Funeral Vehicle	\$395
	> Reception and Hostess	\$425
	> Dignity Honour Burial Flowers	\$600
	> Estate Fraud Protection	\$135
	> Premium Venue Service	\$550
	> Select 1 Plan Support Option	\$295
<b>Family Support Options</b>		
<b>Recommended Caskets</b>	Choose one of the following:	\$3,399
	> Batesville Misty Blue	
	> Batesville Watson	
	> Victoriaville Sherwood Oak	
	> Victoriaville Hartvic	
<b>Recommended Outer Burial Container</b>	> Wilbert Monticello Vault	\$1,995
<b>Events</b>	> Catered Receptions IV	\$995
<b>Additional Products</b>	> Premier Stationery Package	\$995
		Without OBC      With OBC
TOTALS	Total Package Price	\$15,084      \$17,079
	Package Savings	\$510      \$510
	Package Price with Savings	\$14,574      \$16,569
	Package Price without Catering	\$13,579      \$15,574

\* The caskets, outer burial container, urns and catering are recommendations only. You are not required to purchase these or any other casket, outer burial container, urn or catering as part of this offering. Embalming is also declinable. A complete description of the FAMILY SUPPORT OPTIONS can be found in the Service Section and Miscellaneous Service and Merchandise section of the price list. The price for flowers and / or catered receptions included in packages provides a "credit" towards the selection of any floral arrangement (chosen by the family); or any variation of items selected from the catering menu.

## DIGNITY MEMORIAL TRIBUTE FUNERAL SERVICE

<b>The Service</b>	> Coordinating Activities, Rites and Ceremonies for Full Service	\$3,450
	> Registration and Documentation	\$415
	> Embalming	\$525
	> Basic Preparation of Remains	\$415
	> Supervision for Visitation First Day	\$470
	> Supervision for Funeral Service	\$550
	> Use of Facilities for Embalming and Preparation	\$355
	> Use of Facilities For Visitation - First Day	\$590
	> Transfer of remains from place of death to funeral home	\$525
	> Funeral Vehicle	\$395
	> Reception and Hostess	\$425
	> Estate Fraud Protection	\$135
	> Premium Venue Service	\$550
	> Select 1 Plan Support Option	\$295
<b>Family Support Options</b>		
<b>Recommended Caskets</b>	Choose one of the following:	\$2,899
	> Batesville Coleridge	
	> Batesville Montgomery	
	> Victoriaville Winfield	
<b>Recommended Outer Burial Container</b>	> Wilbert Monticello Vault	\$1,995
<b>Events</b>	> Catered Receptions IV	\$995
<b>Additional Products</b>	> Premier Stationery Package	\$995
TOTALS	Total Package Price	Without OBC \$13,984 With OBC \$15,979
	Package Savings	\$475 \$475
	Package Price with Savings	\$13,509 \$15,504
	Package Price without Catering	\$12,514 \$14,509

\* The caskets, outer burial container, urns and catering are recommendations only. You are not required to purchase these or any other casket, outer burial container, urn or catering as part of this offering. Embalming is also declinable. A complete description of the FAMILY SUPPORT OPTIONS can be found in the Service Section and Miscellaneous Service and Merchandise section of the price list. The price for flowers and / or catered receptions included in packages provides a "credit" towards the selection of any floral arrangement (chosen by the family); or any variation of items selected from the catering menu.



## DIGNITY MEMORIAL HONOUR CREMATION SERVICE

<b>The Service</b>	> Coordinating Activities, Rites and Ceremonies for Service of Remembrance	\$3,450
	> Registration and Documentation	\$415
	> Basic Preparation of Remains	\$415
	> Supervision of Memorial Service	\$550
	> Use of Facilities for Embalming and Preparation	\$355
	> Transfer to or from crematory	\$125
	> Transfer of remains from place of death to funeral home	\$525
	> Reception and Hostess	\$425
	> Dignity Honour Cremation Flowers	\$400
	> Estate Fraud Protection	\$135
	> Premium Venue Service	\$550
<b>Family Support Options</b>	> Select 1 Cremation Plan Support Option	\$295
<b>Memorial Urn Selection</b>	Choose one of the following:	\$795
	> Urnes Bégin Versatile Urn Navy	
	> LoveUrns Laurel Midnight	
	> Terrybear Satori Ocean Pearl	
	> Batesville Memento Chest	
<b>Container</b>	> Batesville Brockton Oak (1 Hour Rental)	\$899
<b>Events</b>	> Catered Receptions IV	\$995
<b>Additional Products</b>	> Premier Stationery Package	\$995
<b>TOTALS</b>	Total Package Price	\$11,324
	Package Savings	\$340
	Package Price with Savings	\$10,984
	Package Price without Catering	\$9,989

\* The caskets, outer burial container, urns and catering are recommendations only. You are not required to purchase these or any other casket, outer burial container, urn or catering as part of this offering. Embalming is also declinable. A complete description of the FAMILY SUPPORT OPTIONS can be found in the Service Section and Miscellaneous Service and Merchandise section of the price list. The price for flowers and / or catered receptions included in packages provides a "credit" towards the selection of any floral arrangement (chosen by the family); or any variation of items selected from the catering menu.

## DIGNITY MEMORIAL TRIBUTE CREMATION SERVICE

<b>The Service</b>	> Coordinating Activities for No Service Option	\$1,585
	> Registration and Documentation	\$415
	> Basic Preparation of Remains	\$415
	> Venue and Staff Services to coordinate a Simple Gathering	\$695
	> Sheltering of remains	\$250
	> Transfer to or from crematory	\$125
	> Transfer of remains from place of death to funeral home	\$525
	> Estate Fraud Protection	\$135
<b>Family Support Options</b>	> Select 1 Cremation Plan Support Option	\$295
<b>Memorial Urn Selection</b>	Choose one of the following:	\$595
	> LoveUrns Laurel Crimson	
	> Urnes Bégin Sky Pewter	
	> Mackenzie Classic Sky Blue	
	> Batesville Cherry Chest	
<b>Container</b>	> Batesville Brockton Oak (1 Hour Rental)	\$899
TOTALS	Total Package Price	\$5,934
	Package Savings	\$50
	Package Price with Savings	\$5,884

\* The caskets, outer burial container, urns and catering are recommendations only. You are not required to purchase these or any other casket, outer burial container, urn or catering as part of this offering. Embalming is also declinable. A complete description of the FAMILY SUPPORT OPTIONS can be found in the Service Section and Miscellaneous Service and Merchandise section of the price list. The price for flowers and / or catered receptions included in packages provides a "credit" towards the selection of any floral arrangement (chosen by the family); or any variation of items selected from the catering menu.

<b>7. SACRAMENT MAPLE/205164</b>	<b>CWMLBAGIBQ / Batesville</b>	<b>\$4,799</b>
Solid hardwood casket with a dark cherry, hand-rubbed, high gloss exterior and champagne velvet interior.		
210.82 cm L X 72.72 cm W X 58.42 cm H		
<b>8. BRIAR HILL/WR227-20001</b>	<b>CWMLLBEPBN / Victoriaville</b>	<b>\$4,399</b>
Hardwood casket with beige basket weave interior - perfection cut		
209.25 cm L X 71.76 cm W X 57.15 cm H		
<b>9. CAMDEN OAK/246688</b>	<b>CWOKBFBKBP / Batesville</b>	<b>\$4,399</b>
Solid traditional oak casket with dark finished exterior, and a champagne velvet interior.		
208.92 cm L X 73.03 cm W X 59.69 cm H		
<b>10. ROSETTE/242707</b>	<b>CWHWBRHCDC / Batesville</b>	<b>\$4,399</b>
Select hardwood veneer casket with a dark cherry, hand-rubbed, high gloss exterior and natural batiste interior.		
207.01 cm L X 71.63 cm W X 59.69 cm H		
<b>11. VICTORIA CHERRY/05-530-02</b>	<b>CWCHLBAKBH / Victoriaville</b>	<b>\$4,399</b>
Solid Cherry octagon casket with Empire stain and polished exterior with blush pink velvet interior.		
204.17 cm L X 64.14 cm W X 53.04 cm H		
<b>12. RILEY/263783</b>	<b>CWPRBAASAR / Batesville</b>	<b>\$4,099</b>
Select hardwood casket with a dark cherry, hand-rubbed, high gloss exterior and ivory linwood - charpente interior.		
209.55 cm L X 72.72 cm W X 59.69 cm H		
<b>13. DOMINION MAPLE/20-5610-01</b>	<b>CWMLLBWEGQ / Victoriaville</b>	<b>\$3,899</b>
Solid Maple casket with Titian stain and polished exterior with tan crepe interior.		
209.25 cm L X 71.76 cm W X 57.15 cm H		
<b>14. ELEANOR OAK/195908</b>	<b>CWOKBBYAE0 / Batesville</b>	<b>\$3,899</b>
Oak casket with a chestnut stained, satin finished exterior and pink crepe interior.		
206.38 cm L X 68.58 cm W X 54.61 cm H		
<b>15. FIRESIDE/269166</b>	<b>CWOKBBAVA1 / Batesville</b>	<b>\$3,899</b>
Oak wood casket with medium rustic stain with satin finish exterior and oatmeal duck / camo cloth interior.		
208.92 cm L X 71.76 cm W X 58.42 cm H		
<b>16. BAILEY/263781</b>	<b>CWPRBAAQKL / Batesville</b>	<b>\$3,399</b>
Select hardwood veneer casket with medium finish exterior and khaki linwood interior.		
209.55 cm L X 72.72 cm W X 59.69 cm H		

# CASKET PRICE LIST

## Families First Funeral Home and Tribute Centre

3260 Dougall Avenue

Windsor, ON N9E1S6

519-969-5841

License #: FE-267 Funeral Establishment Operator Class 1

These prices are effective as of May 6, 2025.

A Division of Service Corporation International (Canada) ULC.

The following caskets are Adult sized, unless otherwise noted as a youth or oversize product in the description.

Product Name	Item Code / Manufacturer	Retail Price
--------------	--------------------------	--------------

### WOOD CASKETS

These products are suitable for cremation. The final cremation container insert is included in the rental casket price.

- |   |                                   |                 |
|---|-----------------------------------|-----------------|
| <b>1. 710 PRESIDENT/202149</b>  | <b>CWMYBAPXEJ / Batesville</b>    | <b>\$16,199</b> |
| Mahogany casket with a dark brown, Georgetown stained exterior and a silverbeige velvet interior.                   |                                   |                 |
| 214 cm L X 74.3 cm W X 59.69 cm H   |                                   |                 |
| <b>2. REGENT/195846</b>   | <b>CWMYBAROBQ / Batesville</b>    | <b>\$6,799</b>  |
| Solid mahogany casket with a dark finished exterior and champagne velvet interior.                                  |                                   |                 |
| 209.25 cm L X 71.76 cm W X 57.15 cm H   |                                   |                 |
| <b>3. CLASSIC MAHOGANY/01-9300-00</b>   | <b>CWMYLBABEJ / Victoriaville</b> | <b>\$6,099</b>  |
| Solid Mahogany casket with Titian stain and Prestige hand-rubbed satin exterior with Pearl Premium velvet interior. |                                   |                 |
| 210.19 cm L X 72.39 cm W X 58.42 cm H   |                                   |                 |
| <b>4. PROMINENCE/244309</b>   | <b>CWMLBDA6BQ / Batesville</b>    | <b>\$6,099</b>  |
| Solid maple casket with a dark, hand-rubbed, high gloss, cherry stain exterior with a champagne velvet interior.    |                                   |                 |
| 207.34 cm L X 72.39 cm W X 59.06 cm H   |                                   |                 |
| <b>5. ST. THOMAS OAK/10-501-00</b>  | <b>CWWLBAJDA / Victoriaville</b>  | <b>\$4,899</b>  |
| Solid Oak casket with Persian Fawn stain and polished exterior with ivory velvet interior.                          |                                   |                 |
| 210.19 cm L X 72.72 cm W X 58.75 cm H   |                                   |                 |
| <b>6. WOODHAVEN PECAN/205162</b>  | <b>CWPNBADRQB / Batesville</b>    | <b>\$4,899</b>  |
| Pecan veneer casket with a medium pecan, satin finish exterior and champagne velvet interior.                       |                                   |                 |
| 209.55 cm L X 72.39 cm W X 58.42 cm H   |                                   |                 |



<b>27. WINFIELD/52-5430-20</b>	<b>CWHWLEYGGQ / Victoriaville</b>	<b>\$2,899</b>
Solid Hardwood casket veneer sided with American Cherry stain and satin exterior with tan crepe interior.		
208.28 cm L X 70.82 cm W X 57.15 cm H		
<b>28. DRYDEN HARDWOOD CREPE/274158</b>	<b>CWHWBDAEFD / Batesville</b>	<b>\$2,799</b>
Dryden hardwood half couch with rosetan crepe interior.		
207.01 cm L X 71.63 cm W X 58.42 cm H		
<b>29. NATURA/51-5175-01</b>	<b>CWPRLDFEAB / Victoriaville</b>	<b>\$2,699</b>
New leaf solid poplar casket with natural finish exterior with 100% natural cotton interior.		
205.44 cm L X 73.81 cm W X 50.01 cm H		
<b>30. FREELTON/195869</b>	<b>CWHWBCBDHN / Batesville</b>	<b>\$2,499</b>
Select hardwood casket with a medium finished exterior and white satin interior.		
210.19 cm L X 72.39 cm W X 58.42 cm H		
<b>31. LYNX BROWN/262858</b>	<b>CWHWBDAEFD / Batesville</b>	<b>\$2,099</b>
Poplar wood casket with a medium pecan, satin finish exterior and rosetan crepe interior.		
209.25 cm L X 71.76 cm W X 57.15 cm H		
<b>32. LYRA BROWN/269152</b>	<b>CWPIBCA3FD / Batesville</b>	<b>\$2,099</b>
Pine casket with a dark finish exterior and rosetan crepe interior.		
207.01 cm L X 71.63 cm W X 58.42 cm H		

## METAL CASKETS

The caskets in this section are not suitable for cremation.

<b>33. AEGEAN BRONZE/147862</b>	<b>CMB3BDHLBQ / Batesville</b>	<b>\$10,499</b>
32 oz. bronze casket with a bronze brushed exterior and a champagne velvet interior.		
212.09 cm L X 72.39 cm W X 59.69 cm H		
<b>34. MEDITERRANEAN COPPER/147930</b>	<b>CMC3BEZYBQ / Batesville</b>	<b>\$8,395</b>
32-ounce copper casket with a copper brushed exterior and champagne velvet interior.		
216.23 cm L X 74.63 cm W X 59.54 cm H		
<b>35. GOLDEN MIDNIGHT/239699</b>	<b>CMS8BDJHBQ / Batesville</b>	<b>\$4,799</b>
Golden Midnight - 18 Gauge Steel Casket with Brushed Exterior - MemorySafe Drawer and LifeStories Medallions.		
213.36 cm L X 73.66 cm W X 60.96 cm H		
<b>36. MERLOT/239694</b>	<b>CMS8BATMBP / Batesville</b>	<b>\$4,799</b>
18 gauge steel casket with a burgundy painted exterior and champagne velvet interior.		
211.15 cm L X 71.45 cm W X 58.75 cm H		

<b>17. HARTVIC/52-5410-08</b>	<b>CWPRLBAEGQ / Victoriaville</b>	<b>\$3,399</b>
Solid Hardwood casket veneer sided with Dark Almond Shaded stain and satin exterior with tan crepe interior.		
209.25 cm L X 71.76 cm W X 57.15 cm H		
<b>18. SHERWOOD OAK/12-758-01</b>	<b>CWOKLEGZGQ / Victoriaville</b>	<b>\$3,399</b>
Solid Oak casket veneer sided with Shaded Persian Fawn stain and polished exterior with tan crepe interior.		
208.76 cm L X 67.79 cm W X 52.07 cm H		
<b>19. TRENTON/205161</b>	<b>CWHWBAKYFD / Batesville</b>	<b>\$3,399</b>
Select hardwood casket with light pecan, hand-rubbed, high-gloss finish exterior and rosetan crepe interior.		
209.55 cm L X 73.03 cm W X 58.42 cm H		
<b>20. WATSON/278474</b>	<b>CWHWBEA5FD / Batesville</b>	<b>\$3,399</b>
Hardwood casket with a medium finished exterior with a lugwood corner design and the interior is beige linwood.		
207.59 cm L X 71.7 cm W X 59.84 cm H		
<b>21. WESTON POPLAR/205163</b>	<b>CWHWBALAFD / Batesville</b>	<b>\$3,399</b>
Select hardwood casket with a medium cherry stain, hand-rubbed, gloss finish exterior and rosetan crepe interior.		
209.55 cm L X 73.03 cm W X 58.42 cm H		
<b>22. CLIFTON/263630</b>	<b>CWHWBDADBA / Batesville</b>	<b>\$3,099</b>
Select hardwood veneer casket with a dark, Victorian cherry, satin finish exterior and rosetan crepe -dual overlay interior.		
209.55 cm L X 71.76 cm W X 58.42 cm H		
<b>23. COLERIDGE/278475</b>	<b>CWAFBEA6CV / Batesville</b>	<b>\$2,899</b>
Hardwood casket with a medium finished exterior and rosetan crepe interior.		
207.16 cm L X 71.73 cm W X 59.64 cm H		
<b>24. CONSTANCE/249224</b>	<b>CWHWBAAEMC / Batesville</b>	<b>\$2,899</b>
Select hardwood casket with a medium cherry stain, hand-rubbed, gloss finish exterior and moss pink crepe interior.		
207.16 cm L X 71.7 cm W X 59.84 cm H		
<b>25. FINLEY PINE/146897</b>	<b>CWPIBAPLFD / Batesville</b>	<b>\$2,899</b>
Solid pine casket with a light, natural pine exterior and rosetan crepe interior.		
208.92 cm L X 71.76 cm W X 57.79 cm H		
<b>26. MONTGOMERY/249223</b>	<b>CWHWBAAAGFD / Batesville</b>	<b>\$2,899</b>
Select hardwood casket with a medium walnut stain, hand-rubbed high gloss finish exterior and rosetan crepe interior.		
207.16 cm L X 71.7 cm W X 59.84 cm H		

<b>37. SAND/242739</b>	<b>CMS0BSHCRC / Batesville</b>	<b>\$3,499</b>
20 gauge steel casket with a metal exterior and rosetan crepe charpente interior.		
211.15 cm L X 72.09 cm W X 60.02 cm H		
<b>38. ANTIQUE BLUE-28/220682</b>	<b>CMS0BDLPDE / Batesville</b>	<b>\$3,399</b>
20-gauge steel oversized casket with a blue shaded exterior and silver accents and a light blue, crepe interior.		
211.46 cm L X 71.76 cm W X 59.69 cm H		
<b>39. MISTY BLUE/148083</b>	<b>CMS0BEBKDE / Batesville</b>	<b>\$3,399</b>
20 gauge steel casket with a blue shaded exterior and blue accents, and a light blue crepe interior.		
211.15 cm L X 72.09 cm W X 60.02 cm H		
<b>40. GALAXY/148052</b>	<b>CMS0BDUIFW / Batesville</b>	<b>\$2,799</b>
20 gauge steel casket with a silver-shaded pewter exterior and silver crepe interior.		
210.82 cm L X 71.76 cm W X 60.33 cm H		

## OTHER CASKETS

These products are suitable for cremation. The final cremation container insert is included in the rental casket price.

<b>41. GREY DOESKIN OVERSIZE OVAL CT/147972</b>	<b>CCCLBBYOCV / Batesville</b>	<b>\$2,099</b>
Embossed doeskin oversized cloth-covered casket with a grey, oval top exterior and ivory crepe interior.		
218.44 cm L X 83.82 cm W X 53.34 cm H		
<b>42. GREY DOESKIN OVAL CUT TOP/147970</b>	<b>CCCLBBYMCV / Batesville</b>	<b>\$1,399</b>
Embossed doeskin cloth-covered cardboard with a grey, oval top exterior and ivory crepe interior.		
208.28 cm L X 74.93 cm W X 48.9 cm H		

## CREMATION ORIENTED CASKETS

These products are suitable for cremation. The final cremation container insert is included in the rental casket price.

<b>43. GLENBAR LP/CR580-00012</b>	<b>CKLWDBP / Victoriaville</b>	<b>\$1,099</b>
All wood solid construction with a natural finish and white crepe interior.		
<b>44. CADEN/252322</b>	<b>CCBCADE / Batesville</b>	<b>\$799</b>
Cardboard cremation container with brown exterior and simple ivory crepe interior		
207.01 cm L X 73.66 cm W X 45.09 cm H		

## RENTAL CASKETS

---

The following caskets are available for rent. The caskets have been used before and may be used again. These products are suitable for cremation. The final cremation container insert is included in the rental casket price.

**45. LINFORD/246586**

**CRBBLHR / Batesville**

**\$2,695**

Ceremonial casket with medium finished hardwood exterior and rosetan crepe interior.

213.36 cm L X 80.01 cm W X 59.39 cm H

THE TERMS "PROTECTIVE" AND "NON-PROTECTIVE", WHICH MAY BE FOUND IN SOME PRINTED MATERIAL PROVIDED BY THE MANUFACTURER, WERE CHOSEN BY THE MANUFACTURER AND DO NOT CONSTITUTE OR IMPLY A REPRESENTATION OR WARRANTY BY THE FUNERAL HOME. ALTHOUGH CERTAIN CASKETS OFFERED FOR SALE BY THIS FUNERAL ESTABLISHMENT MAY BE OF BETTER QUALITY CONSTRUCTION AND COMPRISED OF MORE DURABLE MATERIAL THAN OTHERS, NEITHER THIS FUNERAL ESTABLISHMENT NOR ANY OF ITS EMPLOYEES REPRESENTS OR IMPLIES THAT ANY CASKET WILL BE AIRTIGHT OR WATERTIGHT OR WILL PROVIDE LONG-TERM PRESERVATION OF HUMAN REMAINS.

# CREMATION REMEMBRANCE PRICE LIST

## Families First Funeral Home and Tribute Centre

3260 Dougall Avenue

Windsor, ON N9E1S6

519-969-5841

License #: FE-267 Funeral Establishment Operator Class 1

These prices are effective as of May 6, 2025.

Product Name	Item Code / Manufacturer	Retail Price
--------------	--------------------------	--------------

## URNS

### CULTURED STONE

- |  |                              |              |
|--|------------------------------|--------------|
| <b>1. CLASSIC CARRERA/1112662</b>                        | <b>UOCMFSAE5 / Mackenzie</b> | <b>\$595</b> |
| Durable cultured marble urn made from polymer and stone. |                              |              |
| 24.77 cm L X 17.15 cm W X 16.51 cm H, 5.89 kg            |                              |              |
| <b>2. CLASSIC SKY BLUE/1112664</b>                       | <b>UOCMFSAE6 / Mackenzie</b> | <b>\$595</b> |
| Durable cultured marble urn made from polymer and stone. |                              |              |
| 24.77 cm L X 17.15 cm W X 16.51 cm H, 5.89 kg            |                              |              |
| <b>3. CLASSIC VERDE GREEN/1112663</b>                    | <b>UOCMFSAE7 / Mackenzie</b> | <b>\$595</b> |
| Durable cultured marble urn made from polymer and stone. |                              |              |
| 24.77 cm L X 17.15 cm W X 16.51 cm H, 5.89 kg            |                              |              |

### STONE

- |   |                                    |                |
|---|------------------------------------|----------------|
| <b>4. EMINENCE BLACK MARBLE URN</b>   | <b>UOMBFSRMB / Terrybear</b>       | <b>\$1,295</b> |
| Natural black marble urn that is fully customizable. Design elements include; text, different corner designs, custom line art, glass photo inlay, gemstone embellishments, abalone shell inlay, and different engraving fill colors. All design elements are handcrafted. |                                    |                |
| 20.32 cm H x 21.59 cm L, 4.76 kg  |                                    |                |
| <b>5. EMINENCE WHITE MARBLE URN</b>   | <b>UOMBFSRME / Terrybear</b>       | <b>\$1,295</b> |
| Natural white marble urn that is fully customizable. Design elements include; text, different corner designs, custom line art, glass photo inlay, gemstone embellishments, abalone shell inlay, and different engraving fill colors. All design elements are handcrafted. |                                    |                |
| 20.32 cm H x 21.59 cm L, 4.76 kg  |                                    |                |
| <b>6. CARRERA MARBLE VASE/1111855</b>   | <b>UOMBFSAE4 / Marble Products</b> | <b>\$595</b>   |
| Natural stone marble vase made from Carrera-inspired marble, polished to a gleaming shine.  |                                    |                |
| 20.96 cm Dia X 27.94 cm H, 6.8 kg   |                                    |                |
| <b>7. ONYX VASE/3211GO01</b>  | <b>UOOXFSAOV / Marble Products</b> | <b>\$595</b>   |
| Marble urn with variations of light green and dark earth tones.   |                                    |                |
| 21.59 cm Dia X 26.67 cm H, 6.8 kg   |                                    |                |

<b>8. SAND RECTANGLE/321121M</b>	<b>UOMBFAFA / Marble Products</b>	<b>\$510</b>
Sand-colored marble urn with natural accents. Urn is suitable as single or companion.		
23.37 cm L X 10.8 cm W X 23.62 cm H, 6.8 kg		

<b>9. SAND VASE/32111F</b>	<b>UOMBFAFB / Marble Products</b>	<b>\$495</b>
Sand-colored marble urn with natural accents.		
20.96 cm Dia X 27.94 cm H, 5.62 kg		

#### PORCELAIN

<b>10. LOVE DOVE PORCELAIN/CA100</b>	<b>UOUOFS5ZF / LoveUrns</b>	<b>\$695</b>
Porcelain Full Size Dove Shaped Urn in white color		
20.3 cm H x 22.8 cm W x 35.5 cm L, 2.26 Kg		

<b>11. WHITE SOULFUL SHELL/CA160</b>	<b>UOPLFS5ZF / LoveUrns</b>	<b>\$595</b>
Porcelain Full Size Shell Shaped Urn in white color		
26.5 cm H x 23.0 cm W x 20.0 cm L, 2,20 kg		

<b>12. YELLOW SOULFUL SHELL/CA161</b>	<b>UOPLSB5ZF / LoveUrns</b>	<b>\$595</b>
Porcelain Full Size Shell Shaped Urn in yellow color		
26.5 cm H x 23.0 cm W x 20.0 cm L, 2,20 kg		

<b>13. LENOX PORCELAIN/1112543</b>	<b>UOPLFSAE9 / Elegante Brass</b>	<b>\$495</b>
Classic and elegant porcelain vase made from Genuine Lenox Porcelain with 24 karat gold gilding.		
18.42 cm Dia X 25.72 cm H, 1.81 kg		

#### CERAMIC

<b>14. ROSE BOUQUET/1054556</b>	<b>UOCRFSARB / Terrybear</b>	<b>\$350</b>
Ceramic urn with hand-painted rose bouquet detail. Features a floral motif on a pearlescent ivory background.		
18.4 cm Dia X 26.7 cm H X 18.4 cm W, 1.6 kg		

#### METAL

<b>15. GUARDIAN ANGEL/CR-120</b>	<b>UMZNFSOIL / Urnes Bégin</b>	<b>\$4,995</b>
Precision casting, 100% solid bronze urn showing an angel crying over a tomb, and two doves taking their flight.		
29 cm L X 27 cm W X 27 cm H, 20.4 kg		

<b>16. FIDELITY COUPLE - COMPANION/CR-070L &amp; CR-070R</b>	<b>UMZNFSOII / Urnes Bégin</b>	<b>\$3,895</b>
Precision casting, 100% solid bronze urns showing a man and a woman waiting for each other at the paradise doors.		
13 cm L X 36 cm W X 20.5 cm H, 18 kg		



Product Name	Item Code / Manufacturer	Retail Price
<hr/>		
<b>17. ROSES VASE/CR-064</b>	<b>UMCBFSZA7 / Urnes Bégin</b>	<b>\$2,895</b>
Cast bronze urn adorned with hand sculpted roses.		
20.5 cm Dia X 25 cm H, 9kg		
<b>18. FIDELITY COUPLE - WOMAN/CR-070L</b>	<b>UMZNFSOIJ / Urnes Bégin</b>	<b>\$1,995</b>
Precision casting, 100% solid bronze urns showing a man and a woman waiting for each other at the paradise doors.		
11.5 cm L X 18 cm W X 20.5 cm H, 9 kg		
<b>19. FIDELITY COUPLE - MAN/CR-070R</b>	<b>UMZNFSOIK / Urnes Bégin</b>	<b>\$1,995</b>
Precision casting, 100% solid bronze urns showing a man and a woman waiting for each other at the paradise doors.		
11.5 cm L X 18 cm W X 20.5 cm H, 9 kg		
<b>20. ETERNAL/RG-043</b>	<b>UMBZFSZER / Urnes Bégin</b>	<b>\$1,895</b>
Die cast 100% bronze urn with bronze dove ornament.		
20 cm Dia X 23 cm H, 9 kg		
<b>21. THE VINE - COMPANION</b>	<b>UMZNFSAGE / Urnes Bégin</b>	<b>\$1,535</b>
Die-cast zinc urn, with a solid bronze face and vine embellishment. Purchased together.		
22.86 cm L X 17.78 cm W X 21.59 cm H, 13.61 kg		
<b>22. DOUBLE VERSATILE PINK/V-URN2-09</b>	<b>UMALAHPPD / Urnes Bégin</b>	<b>\$1,395</b>
Elegant pink aluminum urn with customizable front plate offering high quality, vibrant images that reflect the unique relationship between two individuals as a companion urn.		
<b>23. DOUBLE VERSATILE MATTE BLACK/V-URN2-08</b>	<b>UMALAHPV5 / Urnes Bégin</b>	<b>\$1,395</b>
Elegant matte black aluminum urn with customizable front plate offering high quality, vibrant images that reflect the unique relationship between two individuals as a companion urn.		
<b>24. DOUBLE VERSATILE CHAMPAGNE/V-URN2-06</b>	<b>UMALAHPPV / Urnes Bégin</b>	<b>\$1,395</b>
Elegant champagne aluminum urn with customizable front plate offering high quality, vibrant images that reflect the unique relationship between two individuals as a companion urn.		
17.8 cm L x 18.4 cm W x 26.4 cm H, 6.35 kgs		
<b>25. DOUBLE VERSATILE CHARCOAL/V-URN2-05</b>	<b>UMALAHPVL / Urnes Bégin</b>	<b>\$1,395</b>
Elegant charcoal aluminum urn with customizable front plate offering high quality, vibrant images that reflect the unique relationship between two individuals as a companion urn.		
17.8 cm L x 18.4 cm W x 26.4 cm H, 6.35 kgs		
<b>26. DOUBLE VERSATILE BRONZE/V-URN2-04</b>	<b>UMALAHPVR / Urnes Bégin</b>	<b>\$1,395</b>
Elegant bronze aluminum urn with customizable front plate offering high quality, vibrant images that reflect the unique relationship between two individuals as a companion urn.		
17.8 cm L x 18.4 cm W x 26.4 cm H, 6.35 kgs		

- |   |                                |                |
|---|--------------------------------|----------------|
| <b>27. DOUBLE VERSATILE NAVY/V-URN2-07</b>  | <b>UMALHPVV / Urnes Bégin</b>  | <b>\$1,395</b> |
| Elegant navy aluminum urn with customizable front plate offering high quality, vibrant images that reflect the unique relationship between two individuals as a companion urn.            |                                |                |
| 17.8 cm L x 18.4 cm W x 26.4 cm H, 6.35 kgs   |                                |                |
| <b>28. DOUBLE VERSATILE SPARKLING WHITE/V-URN2-03</b>   | <b>UMALHPVW / Urnes Bégin</b>  | <b>\$1,395</b> |
| Elegant sparkling white aluminum urn with customizable front plate offering high quality, vibrant images that reflect the unique relationship between two individuals as a companion urn. |                                |                |
| 17.8 cm L x 18.4 cm W x 26.4 cm H, 6.35 kgs   |                                |                |
| <b>29. HEARTFELT™ GOLD/A1111</b>  | <b>UMBRFSDTF / LoveUrns</b>    | <b>\$1,295</b> |
| Solid Brass Heart shaped Full Size Urn with Crystal. (Keepsakes and/or accessories sold separately)   |                                |                |
| 20.0 cm H x 27.0 cm W x 22.50 cm L, 2.390 kg  |                                |                |
| <b>30. PERSONALIZED DOUBLE DOVES/ZB-100</b>   | <b>UMZNFSOIH / Urnes Bégin</b> | <b>\$1,195</b> |
| Die cast zinc urn with a bronze face, with two dove bronze ornaments.   |                                |                |
| 18 cm L X 20 cm W X 23 cm H, 13.6 kg  |                                |                |
| <b>31. LILY OF THE VALLEY/ZB-096</b>  | <b>UMBZFSZLV / Urnes Bégin</b> | <b>\$1,095</b> |
| Die cast zinc urn with a solid bronze face, with a molded lily embellishment.   |                                |                |
| 18 cm L X 20 cm W X 23 cm H, 13.6 kg  |                                |                |
| <b>32. DOUBLE OAK/ZB-097</b>  | <b>UMZNFSOIE / Urnes Bégin</b> | <b>\$1,075</b> |
| Die cast zinc urn with bronze face, with an oak molded embellishment.   |                                |                |
| 18 cm L X 20 cm W X 23 cm H, 13.6 kg  |                                |                |
| <b>33. CAST BRONZE RECTANGLE/281704</b>   | <b>UMCBFSABF / Batesville</b>  | <b>\$1,070</b> |
| Cast bronze construction with brushed and polished finish.  |                                |                |
| 14.63 cm L X 9.14 cm W X 27.94 cm H, 3.58 kg  |                                |                |
| <b>34. CAST BRONZE CYLINDER/281705</b>  | <b>UMCBFSABE / Batesville</b>  | <b>\$910</b>   |
| Cast bronze construction with brushed and polished finish   |                                |                |
| 15.24 cm Dia X 20.07 cm H, 4.13 kg  |                                |                |
| <b>35. PERSONALIZED TREE/ZB-201</b>   | <b>UMBZFSZPB / Urnes Bégin</b> | <b>\$895</b>   |
| Die cast zinc urn with bronze face, with a bronze ornament from the personalized collection. Over a hundred ornaments available.  |                                |                |
| 11.5 cm L X 19 cm W X 20.5 cm H, 6.8 kg   |                                |                |
| <b>36. THE VINE - LEFT/ZB-071L</b>  | <b>UMZNFSAGF / Urnes Bégin</b> | <b>\$895</b>   |
| Die-cast zinc urn, with a solid bronze face and vine embellishment. Design to the left of engraving plate.  |                                |                |
| 11.43 cm L X 17.78 cm W X 21.59 cm H, 6.8 kg  |                                |                |

<b>37. THE VINE - RIGHT/ZB-071R</b>	<b>UMZNFSAGK / Urnes Bégin</b>	<b>\$895</b>
Die-cast zinc urn, solid bronze face, vine embellishment. Design to the right of engraving plate.		
11.43 cm L X 17.78 cm W X 21.59 cm H, 6.8 kg		
<b>38. SERENITY ROSE/ZB-601B</b>	<b>UMZNFSOIB / Urnes Bégin</b>	<b>\$895</b>
Die cast zinc urn with bronze rose ornament and grey brushed edge. (ZB-601B)		
11.5 cm L X 19 cm W X 20.5 cm H, 4.5 kg		
<b>39. SERENITY TREE/ZB-600B</b>	<b>UMZNFSOIC / Urnes Bégin</b>	<b>\$895</b>
Die cast zinc urn with bronze tree ornament and grey brushed edge. (ZB-600B)		
11.5 cm L X 19 cm W X 20.5 cm H, 4.5 kg		
<b>40. SERENITY PLAIN/ZB-602B</b>	<b>UMZNFSOID / Urnes Bégin</b>	<b>\$895</b>
Die cast zinc urn with grey brushed edge. (ZB-602B)		
11.5 cm L X 19 cm W X 20.5 cm H, 4.5 kg		
<b>41. ELEGANT LEAF/A540</b>	<b>UMBRFSLFP / LoveUrns</b>	<b>\$895</b>
Brass urn with deep emerald finish complete with brass fern leaf detail.		
25.4 cm H x 15.24 cm Dia, 2.26 kg		
<b>42. SIMPLICITY/A520</b>	<b>UMBRFSLFR / LoveUrns</b>	<b>\$795</b>
Brass and metal alloy urn with a radiant midnight finish and silver accents.		
24.76 cm H x 17.78 cm Dia, 2.26 kg		
<b>43. SATORI PINK PEARL/1054553</b>	<b>UMBRFSASK / Terrybear</b>	<b>\$795</b>
Brass urn with beautiful pearl pink finish and metallic shimmer. Features an artistic, contemporary shape and polished bronze finish accents.		
18.5 cm Dia X 22.4 cm H X 5 cm W, 3.18 kg		
<b>44. SATORI OCEAN PEARL/1054544</b>	<b>UMBRFSASO / Terrybear</b>	<b>\$795</b>
Brass urn with beautiful pearl blue ocean finish and metallic shimmer. Features an artistic, contemporary shape and polished bronze finish accents.		
18.5 cm Dia X 22.4 cm H X 5 cm W, 3.18 kg		
<b>45. SATORI WHITE PEARL/1054550</b>	<b>UMBRFSASW / Terrybear</b>	<b>\$795</b>
Brass urn with beautiful pearl white finish and metallic shimmer. Features an artistic, contemporary shape and polished bronze finish accents.		
18.5 cm Dia X 22.4 cm H X 5 cm W, 3.18 kg		
<b>46. TEARDROP MATTE SAGE GREEN/A585</b>	<b>UMBRFSLSG / LoveUrns</b>	<b>\$795</b>
Unique sage green teardrop shaped brass urn with a soft touch finish and brushed gold top.		
21.84 cm L x 22.35 cm W x 25.91 cm H, 2.28 kg		
<b>47. MEMORIES/ZB-098</b>	<b>UMBZFSZMD / Urnes Bégin</b>	<b>\$795</b>
Die cast zinc urn with bronze plate and bronze embellishments.		
13 cm L X 28 cm W X 26 cm H, 9 kg		

<b>48. OAK - LEFT/ZB-061L</b>	<b>UMBZFSZOL / Urnes Bégin</b>	<b>\$795</b>
Die cast zinc urn with a solid bronze face, tree embellishment molded on the sides.		
11.5 cm L X 18 cm W X 20.5 cm H, 6.8 kg		
<b>49. OAK - RIGHT/ZB-061R</b>	<b>UMBZFSZOR / Urnes Bégin</b>	<b>\$795</b>
Die cast zinc urn with a solid bronze face, tree embellishment molded on the sides.		
11.5 cm L X 18 cm W X 20.5 cm H, 6.8 kg		
<b>50. VERSATILE URN CHAMPAGNE/V-URN-06</b>	<b>UMALFSPG0 / Urnes Bégin</b>	<b>\$795</b>
Sleek aluminum champagne urn with a customizable front plate offering high quality, vibrant images that reflect the unique personality and passions of your loved one.		
12.1cm L x 18.8cm D x 21.6cm W, 2.25kg		
<b>51. VERSATILE URN CHARCOAL/V-URN-05</b>	<b>UMALFSPG1 / Urnes Bégin</b>	<b>\$795</b>
Sleek aluminum charcoal urn with a customizable front plate offering high quality, vibrant images that reflect the unique personality and passions of your loved one.		
12.1cm L x 18.8cm D x 21.6cm W, 2.25kg		
<b>52. VERSATILE URN NAVY/V-URN-07</b>	<b>UMALFSPG3 / Urnes Bégin</b>	<b>\$795</b>
Sleek aluminum navy urn with a customizable front plate offering high quality, vibrant images that reflect the unique personality and passions of your loved one.		
12.1cm L x 18.8cm D x 21.6cm W, 2.25kg		
<b>53. VERSATILE URN PINK/V-URN-02</b>	<b>UMALFSPG4 / Urnes Bégin</b>	<b>\$795</b>
Sleek aluminum pink urn with a customizable front plate offering high quality, vibrant images that reflect the unique personality and passions of your loved one.		
12.1cm L x 18.8cm D x 21.6cm W, 2.25kg		
<b>54. VERSATILE URN SPARKLING WHITE/V-URN-03</b>	<b>UMALFSPG5 / Urnes Bégin</b>	<b>\$795</b>
Sleek aluminum sparkling white urn with a customizable front plate offering high quality, vibrant images that reflect the unique personality and passions of your loved one.		
12.1cm L x 18.8cm D x 21.6cm W, 2.25kg		
<b>55. VERSATILE URN BRONZE/V-URN-04</b>	<b>UMALFSPGZ / Urnes Bégin</b>	<b>\$795</b>
Sleek aluminum bronze urn with a customizable front plate offering high quality, vibrant images that reflect the unique personality and passions of your loved one.		
12.1cm L x 18.8cm D x 21.6cm W, 2.25kg		
<b>56. VERSATILE URN MATTE BLACK/V-URN-08</b>	<b>UMALFSPVY / Urnes Bégin</b>	<b>\$795</b>
Sleek aluminum matte black urn with a customizable front plate offering high quality, vibrant images that reflect the unique personality and passions of your loved one.		
<b>57. TEARDROP MATTE BLACK/A583</b>	<b>UMASFSLMB / LoveUrns</b>	<b>\$795</b>
Unique matte black teardrop shaped brass urn with a soft touch finish and brushed gun metal top.		
21.84 cm L x 22.35 cm W x 25.91 cm H, 2.28 kg		

Product Name	Item Code / Manufacturer	Retail Price
<b>58. LAUREL WHITE PEARL/A297</b>	<b>UMBRFSAAF / LoveUrns</b>	\$795
Alloy and brass vase with a pristine white hand-applied enamel design.		
28.50 cm H x 18.50 cm W x 18.50 cm L, 2.300 kg		
<b>59. LAUREL MIDNIGHT/A292</b>	<b>UMBRFSAAU / LoveUrns</b>	\$795
Alloy and brass vase with a rich charcoal hand-applied enamel design.		
28.50 cm H x 18.50 cm W x 18.50 cm L, 2.300 kg		
<b>60. SOUL BIRD/A562</b>	<b>UMBRFSLFS / LoveUrns</b>	\$715
Elegant and sleek brass urn bird urn. (Keepsakes and/or accessories sold separately)		
27.94 cm W x 22.86 cm H x 17.78 cm D, 1.93 kg		
<b>61. AMORE™ RED/A363</b>	<b>UMADFS5AU / LoveUrns</b>	\$695
Solid Brass Full Size Urn with Red and Polished Silver Finish. Compartment on top to keep memorable items.		
29.40 cm H x 18.50 cm W x 18.50 cm L, 2.620 kg		
<b>62. LAUREL CRIMSON/A299</b>	<b>UMABFS5AU / LoveUrns</b>	\$595
Crimson Color Metal Full Size Urn with Brushed Gold Lid (Keepsakes and/or accessories sold separately)		
28.50 cm H x 18.50 cm W x 18.50 cm L, 2.300 kg		
<b>63. WINGS OF HOPE BLUE/A1041</b>	<b>UMBRFSLFX / LoveUrns</b>	\$595
Elegant butterfly designed brass and enamel urn with blue inlays and pearlescent finish.		
26.67 cm L x 20.32 cm W x 21.58 cm H, 2.3 kg		
<b>64. WINGS OF HOPE LAVENDER/A1040</b>	<b>UMBRFSLFY / LoveUrns</b>	\$595
Elegant butterfly designed brass and enamel urn with lavender inlays and pearlescent finish.		
26.67 cm L x 20.32 cm W x 21.58 cm H, 2.3 kg		
<b>65. WINGS OF HOPE PEARL/A1042</b>	<b>UMBRFSLFZ / LoveUrns</b>	\$595
Elegant butterfly designed brass and enamel urn with white inlays and pearlescent finish.		
26.67 cm L x 20.32 cm W x 21.58 cm H, 2.3 kg		
<b>66. FLYING DOVES/A572</b>	<b>UMBRFSDLY / LoveUrns</b>	\$595
Blue Metal Full Size Urn with hand engraved Dove Design. (Keepsakes and/or accessories sold separately)		
25.0 cm H x 17.50 cm W x 17.50 cm L, 1.650 kg		
<b>67. MOTHER OF PEARL ELITE/A230</b>	<b>UMBRFSAMP / LoveUrns</b>	\$595
Polished brass urn with iridescent Mother of Pearl mosaic tile. (Keepsakes and/or accessories sold separately)		
17.53 cm Dia X 22.86 cm H, 2.72 kg		

Product Name	Item Code / Manufacturer	Retail Price
<b>68. WINGS OF HOPE YELLOW/A1043</b>	<b>UMBRFSLWY / LoveUrns</b>	\$595
Elegant butterfly designed brass and enamel urn with yellow inlays and pearlescent finish.		
26.67 cm L x 20.32 cm W x 21.59 cm H, 2.4 kg		
<b>69. SKY PEWTER/ZB-300A</b>	<b>UMZNFSOHX / Urnes Bégin</b>	\$595
Die cast zinc urn with a pewter marbling finish showing a sky with two bronze angel ornaments.		
11.5 cm L X 18 cm W X 20.5 cm H, 4.5 kg		
<b>70. SKY PINK/ZB-300R</b>	<b>UMZNFSOHY / Urnes Bégin</b>	\$595
Die cast zinc urn with a pink marbling finish showing a sky with two bronze angel ornaments.		
11.5 cm L X 18 cm W X 20.5 cm H, 4.5 kg		
<b>71. SKY BROWN/ZB-300BR</b>	<b>UMZNFSOHZ / Urnes Bégin</b>	\$595
Die cast zinc urn with a brown marbling finish showing a sky with two bronze angel ornaments.		
11.5 cm L X 18 cm W X 20.5 cm H, 4.5 kg		
<b>72. SKY BLUE/ZB-300B</b>	<b>UMZNFSOIA / Urnes Bégin</b>	\$595
Die cast zinc urn with a bleu marbling finish showing a sky with two bronze angel ornaments.		
11.5 cm L X 18 cm W X 20.5 cm H, 4.5 kg		
<b>73. SHEET BRONZE CYLINDER/281663</b>	<b>UMSBFAFG / Batesville</b>	\$595
Constructed from 64 oz sheet bronze with brushed and polished finish.		
14.48 cm Dia X 20.07 cm H, 1.18 kg		
<b>74. SHEET BRONZE RECTANGLE/281662</b>	<b>UMSBFAFI / Batesville</b>	\$595
Constructed from 64 oz sheet bronze with brushed and polished finish.		
14.61 cm L X 9.53 cm W X 27.94 cm H, 1.45 kg		
<b>75. FLIGHT OF DOVES - LEFT/ZB-704L</b>	<b>UMZNFSZA4 / Urnes Bégin</b>	\$595
Die cast zinc urn in an "S" shape, metal grey finish and 3 silver dove ornaments.		
12.25 cm L X 16 cm W X 24 cm H, 4.5 kg		
<b>76. FLIGHT OF DOVES - RIGHT/ZB-704R</b>	<b>UMZNFSZA5 / Urnes Bégin</b>	\$595
Die cast zinc urn in an "S" shape, metal grey finish and 3 silver dove ornaments.		
12.25 cm L X 16 cm W X 24 cm H, 4.5 kg		
<b>77. OMEGA VASE/34155E</b>	<b>UMCBFSADS / Terrybear</b>	\$545
Cast bronze vase with polished gold-tone accents.		
17.78 cm Dia X 25.4 cm H, 2.81 kg		
<b>78. SILVER VASE/2326RU2956L</b>	<b>UMBRFSAFM / Terrybear</b>	\$545
Polished antique silver-toned brass with gold-toned accents.		
16.51 cm Dia X 24.38 cm H, 2.15 kg		

<b>79. ART DECO/A218</b>	<b>UMBRFSDFO / LoveUrns</b>	<b>\$495</b>
Brass urn with classic and sleek style with enameled bands. (Keepsakes and/or accessories sold separately)		
27.3 cm H x 15.24 cm Dia, 2.26 kg		
<b>80. DIVINE/A576</b>	<b>UMBRFSLFO / LoveUrns</b>	<b>\$495</b>
Beautifully designed blue brass and enamel urn with enameled finish.		
24.2 cm H x 17.78 cm Dia., 2.26kg		
<b>81. DOVE VASE/A232</b>	<b>UMBRFSABQ / LoveUrns</b>	<b>\$495</b>
Nickel-plated brass vase with blue accents and dove design. (Keepsakes and/or accessories sold separately)		
17.53 cm Dia X 22.86 cm H, 2.09 kg		
<b>82. MOONLIGHT BLUE VASE/2326RU5220L</b>	<b>UMBRFSADP / Terrybear</b>	<b>\$460</b>
Brass urn with a deep blue finish with metallic shimmer. Features a contemporary shape and pewter-finish accent bands.		
17.27 cm Dia X 25.14 cm H, 2.38 kg		
<b>83. BRIGHT STRIPES BLUE/1054554</b>	<b>UMBRFSAPE / Terrybear</b>	<b>\$425</b>
Brass urn with bright blue striped finish.		
17.5 cm Dia X 23 cm H X 18 cm W, 2.72 kg		
<b>84. BRIGHT STRIPES RED/1054556</b>	<b>UMBRFSARS / Terrybear</b>	<b>\$425</b>
Brass urn with bright crimson striped finish.		
17.5 cm Dia X 23 cm H X 18 cm W, 2.72 kg		
<b>85. BRIGHT STRIPES PURPLE/1054555</b>	<b>UMBRFSAUP / Terrybear</b>	<b>\$425</b>
Brass urn with bright purple striped finish.		
17.5 cm Dia X 23 cm H X 18 cm W, 2.72 kg		
<b>86. CUDDLEBEAR™ BLUE/M1011</b>	<b>UMBRACLTE / LoveUrns</b>	<b>\$195</b>
Teddy Bear shaped Child Urn in Blue finish with Crystal (Keepsakes and/or accessories sold separately)		
13.50 cm H x 12.0 cm W x 9.50 cm L, 0.650 kg		
<b>87. CUDDLEBEAR™ PINK/M1010</b>	<b>UMBRACLTP / LoveUrns</b>	<b>\$195</b>
Teddy Bear shaped Child Urn in Pink finish with Crystal (Keepsakes and/or accessories sold separately)		
13.50 cm H x 12.0 cm W x 9.50 cm L, 0.650 kg		
<b>88. CUDDLEBEAR™ WHITE/M1012</b>	<b>UMZNACZ88 / LoveUrns</b>	<b>\$195</b>
Teddy Bear shaped Child Urn in White finish with Crystal		
13.50 cm H x 12.0 cm W x 9.50 cm L, 0.650 kg		

## WOOD



Product Name	Item Code / Manufacturer	Retail Price
<b>89. CLASSIC STAINED MAPLE/WD-005</b>	<b>UW3QFSGMU</b>	\$895
Urban grey stained maple Urn with customizable front plates.		
<b>90. BOIS SILVER MAPLE/WD-004</b>	<b>UWMPFSACR / Urnes Bégin</b>	\$895
Canadian maple wood urn with dark brown stain and contrasting dark walnut inlay stripe		
19.05 cm L X 16.51 cm W X 22.23 cm H, 1.81 kg		
<b>91. MEMENTO CHEST/282374</b>	<b>UWBHFSADF / Batesville</b>	\$795
Mixed hardwoods and burl wood veneer top with wood inlay and high gloss lacquer finish. Features plastic insert and one key. TSA-compliant		
24.77 cm L X 20.07 cm W X 16.76 cm H, 2.77 kg		
<b>92. MOMENTS AZALEA URN AND FRAME/2326ZC7500L</b>	<b>UWWDFSAMA / Terrybear</b>	\$690
Mixed hardwood urn with removable Tiffany-inspired Azalea frame keepsake. (Frame keepsake is magnetically attached to urn and can be displayed separately. <1 cu in).		
16.51 cm L X 17.15 cm W X 23.15 cm H, 2.18 kg		
<b>93. MOZART MEMORY CHEST/1112044</b>	<b>UWAKFSACV / Terrybear</b>	\$595
Medium Density Fiberboard with veneer memory chest in bombe shape reminiscent of European furniture. TSA-compliant		
21.84 cm L X 27.43 cm W X 16.26 cm H, 2.72 kg		
<b>94. CHERRY CHEST/281660</b>	<b>UWBHFSABH / Batesville</b>	\$595
Composite wood veneer chest with cherry-stained finish. TSA-compliant		
29.21 cm L X 18.54 cm W X 17.78 cm H, 1.81 kg		
<b>95. MODERN ESSENTIAL VINTAGE/2326RU1316L</b>	<b>UWTAFSFME / Terrybear</b>	\$495
Acacia hardwood urn with a contemporary design in a vintage finish. Each urn features a unique woodgrain. TSA-compliant		
25.4 cm L x 10.16 cm W x 21.59 cm H, 2.72 kg		
<b>96. MODERN ESSENTIAL SABLE/2326RU1315L</b>	<b>UWTAFSFMS / Terrybear</b>	\$495
Acacia hardwood urn with a contemporary design in a sable finish. Each urn features a unique woodgrain. TSA-compliant		
25.4 cm L x 10.16 cm W x 21.59 cm H, 2.72 kg		
<b>97. NATURAL CUBE/282006</b>	<b>UWBHFSADQ / Batesville</b>	\$495
Solid birchwood with burl wood veneer and high gloss lacquer finish. TSA-compliant		
18.67 cm L X 18.67 cm W X 19.05 cm H, 2.13 kg		
<b>98. NATURAL BOX/282005</b>	<b>UOFBFSANO / Batesville</b>	\$200
Composite wood with a paper wrap providing a natural wood grain look with matte polish. Features a sliding bottom with one point access for easy use. TSA-compliant		
15.9 cm Dia X 14 cm H X 22.86 cm W, 1.6 kg		

#### ECO-CONSCIOUS

---

<b>107.OCEAN SUNSET SCATTERING TUBE/SADR</b>	<b>UOBDFSADR / BioLife</b>	<b>\$195</b>
--	----------------------------	--------------

Scattering tube is designed to simplify the scattering process. Durable, dignified, easy-to-use container created from recycled paper and cardboard with no metal components.  
TSA-compliant

12.7 cm Dia X 32 cm H, 0.32 kg

<b>108.SIMPLICITY SCATTERING TUBE/S1SU</b>	<b>UORPFS1SU / BioLife</b>	<b>\$195</b>
--	----------------------------	--------------

Scattering tube is designed to simplify the scattering process. Durable, dignified, easy-to-use container created from recycled paper and cardboard with no metal components.  
TSA-compliant

12.7 cm Dia X 32 cm H, 0.32 kg

<b>109.ASCENDING DOVE SCATTERING TUBE/SUF4</b>	<b>UORPFSUF4 / BioLife</b>	<b>\$195</b>
--	----------------------------	--------------

Scattering tube is designed to simplify the scattering process. Durable, dignified, easy-to-use container created from recycled paper and cardboard with no metal components.  
TSA-compliant

30.48 cm H x 12.7 cm Dia, .22kg

<b>110. MOUNTAIN VIEW SCATTERING TUBE/SUF6</b>	<b>UORPFSUF6 / BioLife</b>	<b>\$195</b>
--	----------------------------	--------------

Scattering tube is designed to simplify the scattering process. Durable, dignified, easy-to-use container created from recycled paper and cardboard with no metal components.  
TSA-compliant

30.48 cm H x 12.7 cm Dia, .22kg

<b>111. FIELD OF FLOWERS SCATTERING TUBE/B1SU</b>	<b>UORPSB1SU / BioLife</b>	<b>\$195</b>
---	----------------------------	--------------

Scattering tube is designed to simplify the scattering process. Durable, dignified, easy-to-use container created from recycled paper and cardboard with no metal components.  
TSA-compliant

12.7 cm Dia X 32 cm H, 0.32 kg

## LEATHER

<b>112. LEATHER CYLINDER/281664</b>	<b>UOLRFSACW / Batesville</b>	<b>\$195</b>
-------------------------------------	-------------------------------	--------------

Slate brown bonded leather cylinder. TSA-compliant

15.88 cm Dia X 21.59 cm H, 0.45 kg

## MINIMUM CONTAINER

<b>113. UTILITY/148331</b>	<b>UMSTFSAGJ / Batesville</b>	<b>\$195</b>
----------------------------	-------------------------------	--------------

20 gauge carbon steel construction with black semi-gloss finish.

13.72 cm L X 24.13 cm W X 16.76 cm H, 2.77 kg

<b>114. MAILER/281665</b>	<b>UMALFSADA / Batesville</b>	<b>\$125</b>
---------------------------	-------------------------------	--------------

Composite wood with aluminum like texture, acceptable to ship through the mail courier service.

15.2 cm L x 12.9 cm W x 23.4 cm H, .45 kgs

---

## PREMIUM URNS

### GRANVILLE URNS

- |  |                              |                |
|--|------------------------------|----------------|
| <b>1. CHARLOTTE HORIZONTAL URN/SJDJ</b>  | <b>UWMGFSJDJ / Granville</b> | <b>\$1,295</b> |
| Handcrafted dark and light green wood inlaid urn with a high-gloss lacquer finish. Features a geometric pattern with interlocking diagonals. TSA-compliant                   |                              |                |
| 27 cm L x 18.1 cm W x 11.4 cm H, 1.36 kgs  |                              |                |
| <b>2. HOLDEN HORIZONTAL URN/SJDP</b>   | <b>UWMGFSJDP / Granville</b> | <b>\$1,295</b> |
| Handcrafted black and jewel tone wood inlaid urn with a high-gloss lacquer finish. Features beautiful yellow and orange flowers with weaving soft green vines. TSA-compliant |                              |                |
| 27 cm L x 18.1 cm W x 11.4 cm H, 1.36 kgs  |                              |                |
| <b>3. STEPHEN HORIZONTAL URN/SJDX</b>  | <b>UWMPFSJDX / Granville</b> | <b>\$1,295</b> |
| Handcrafted natural wood inlaid urn with a high-gloss lacquer finish. Features a refined, symmetrical design with overlapping lines.   |                              |                |
| 27 cm L x 18.1 cm W x 11.4 cm H, 1.36 kgs  |                              |                |
| <b>4. LUCINDA BLUE HORIZONTAL URN/SJDT</b>   | <b>UWACFSJDT / Granville</b> | <b>\$1,295</b> |
| Handcrafted blue-green wood inlaid urn with a high-gloss lacquer finish. Features a peaceful dove with a gently flowing ribbon and delicate flowers. TSA-compliant           |                              |                |
| 27 cm L x 18.1 cm W x 11.4 cm H, 1.36 kgs  |                              |                |

## KEEPSAKES

- |   |                              |              |
|---|------------------------------|--------------|
| <b>1. CHARLOTTE KEEPSAKE BOX</b>  | <b>UWABKSJDK / Granville</b> | <b>\$495</b> |
| Handcrafted dark and light green wood inlaid keepsake with a high-gloss lacquer finish. Features a geometric pattern with interlocking diagonals. TSA-compliant                   |                              |              |
| 11.4 cm L x 8.8 cm W x 4.77 cm H, .255 kgs  |                              |              |
| <b>2. HOLDEN KEEPSAKE BOX</b>   | <b>UWABKSJDR / Granville</b> | <b>\$495</b> |
| Handcrafted black and jewel tone wood inlaid keepsake with a high-gloss lacquer finish. Features beautiful yellow and orange flowers with weaving soft green vines. TSA-compliant |                              |              |
| 11.4 cm L x 8.8 cm W x 4.77 cm H, .255 kgs  |                              |              |
| <b>3. LUCINDA BLUE KEEPSAKE BOX</b>   | <b>UWABKSJDU / Granville</b> | <b>\$495</b> |
| Handcrafted blue-green wood inlaid keepsake with a high-gloss lacquer finish. Features a peaceful dove with a gently flowing ribbon and delicate flowers. TSA-compliant           |                              |              |
| 11.4 cm L x 8.8 cm W x 4.77 cm H, .255 kgs  |                              |              |
| <b>4. STEPHEN KEEPSAKE BOX</b>  | <b>UWABKSJDY / Granville</b> | <b>\$495</b> |
| Handcrafted natural wood inlaid keepsake with a high-gloss lacquer finish. Features a refined, symmetrical design with overlapping lines. TSA-compliant                           |                              |              |
| 11.4 cm L x 8.8 cm W x 4.77 cm H, .255 kgs  |                              |              |

Product Name	Item Code / Manufacturer	Retail Price
<hr/>		
<b>5. WATER SWIRL TUMBLER VOTIVE/GVS-ER</b> Th Serenity Glass Swirl Collection is a series of unique soft glass items. 8.8 cm D x 10.0 cm H, 0.18 kg	<b>UCE3UETMEX / Eternity's Touch</b>	\$365
<b>6. FIRE SWIRL TUMBLER VOTIVE/GVS-FR</b> Th Serenity Glass Swirl Collection is a series of unique soft glass items. 8.8 cm D x 10.0 cm H, 0.18 kg	<b>UCE3UETOEX / Eternity's Touch</b>	\$365
<b>7. EARTH SWIRL EGG/GES-ER</b> Th Serenity Glass Swirl Collection is a series of unique soft glass items. 5.5 cm D x 82 cm H, 0.18 kg	<b>UCE3UET5EX / Eternity's Touch</b>	\$345
<b>8. WIND SWIRL EGG/GES-AR</b> Th Serenity Glass Swirl Collection is a series of unique soft glass items. 5.5 cm D x 82 cm H, 0.18 kg	<b>UCE3UET7EX / Eternity's Touch</b>	\$345
<b>9. BLUE BUTTERFLY LIGHT OF REMEMBRANCE™/2326RUC682K</b> Tiffany-inspired lamp with butterfly design. 12.07 cm L X 12.07 cm W X 16.51 cm H, 0.54 kg	<b>UOGLKSABL / Terrybear</b>	\$255
<b>10. EARTH SCATTERING CYLINDER SMALL/S1G5</b> The patented Eco Scattering Urn is a beautiful and dignified option for families that want to scatter the ashes of a loved one. Each hand-made Eco Scattering Urn is made only from bamboo, a sustainable resource, and rubbed with a natural oil to accentuate the natural grains and colors of the bamboo. The lid is secured with a strong, birch wood locking pin and can be locked in an open and closed position for graceful scattering. Comes with a hand-sewn premium cotton bag sleeve convenient for travel. TSA-compliant 6.3 cm D x 22.9 cm H	<b>UOALKS1G5 / BioLife</b>	\$195
<b>11. SILVER HEART/2326RU2956H</b> Polished antique silver brass heart with gold-tone accents. 7.62 cm L X 7.62 cm W X 4.45 cm H, 0.23 kg	<b>UMBRKHAFK / Terrybear</b>	\$155
<b>12. MIDNIGHT PEWTER HEART/K611</b> Concave heart with brushed pewter finish and midnight accents. 7.62 cm L x 4.57 cm W x 6.09 cm H, 0.022 kgs	<b>UMBRKHAME / LoveUrns</b>	\$155
<b>13. HEART BRUSHED GOLD KEEPSAKE/K600</b> Solid Brass Heart shaped Keepsake in brushed gold finish 3.0 cm H x 8.0 cm W x 7.0 cm L, 0.220 kg	<b>UMBRKHDKG / LoveUrns</b>	\$155
<b>14. HEART POLISHED GOLD KEEPSAKE/K602</b> Solid Brass Heart shaped Keepsake in polished gold finish 3.0 cm H x 8.0 cm W x 7.0 cm L, 0.220 kg	<b>UMBRKHDPG / LoveUrns</b>	\$155

Product Name	Item Code / Manufacturer	Retail Price
<hr/>		
<b>15. HEART POLISHED SILVER KEEPSAKE/K603</b>	<b>UMBRKHDPS / LoveUrns</b>	\$155
Solid Brass Heart shaped Keepsake in polished silver finish		
3.0 cm H x 8.0 cm W x 7.0 cm L, 0.220 kg		
<b>16. COMFORTCROSS™ GOLD/K653</b>	<b>UMBRKS5Y6 / LoveUrns</b>	\$155
Solid Brass Cross shaped Keepsake in Polished Gold finish		
10.1 cm L x 6.60 cm W x 3.56 cm H, 0.227 kg		
<b>17. HEARTFELT™ GOLD KEEPSAKE/K1111</b>	<b>UMBRKSDTK / LoveUrns</b>	\$155
Solid Brass Heart shaped Keepsake Urn with Crystal		
6.0 cm H x 7.50 cm W x 6.50 cm L, 0.210 kg		
<b>18. SOULBIRD KEEPSAKE/K562</b>	<b>UMBRKSLF4 / LoveUrns</b>	\$155
Unique bird shaped keepsake in a brilliant polished finish.		
7.62 cm L x 4.57 cm W x 6.09 cm H, 0.022 kgs		
<b>19. COMFORT CROSS SILVER/K652</b>	<b>UMBRKSLFO / LoveUrns</b>	\$155
Beautifully crafted cross with smooth design.		
10.1 cm L x 6.60 cm W x 3.56 cm H, 0.227 kg		
<b>20. MATTE BLACK TEARDROP KEEPSAKE/K583</b>	<b>UMABKSLMT / LoveUrns</b>	\$155
Unique matte black teardrop shaped keepsake with a soft touch finish and brushed gun metal top.		
6.5 cm L x 6.5 cm W x 8.1 cm H		
<b>21. HEART LAUREL CRIMSON KEEPSAKE/H680</b>	<b>UMAFKH5AS / LoveUrns</b>	\$155
Crimson Color Heart Shaped Keepsake		
3.0 cm H x 8.0 cm W x 7.0 cm L, 0.220 kg		
<b>22. SAGE GREEN TEARDROP KEEPSAKE/K585</b>	<b>UMASKSLKD / LoveUrns</b>	\$155
Unique sage green teardrop shaped keepsake with a soft touch finish and brushed gold top		
6.5 cm L x 6.5 cm W x 8.1 cm H		
<b>23. LAUREL CRIMSON KEEPSAKE/K299</b>	<b>UMAFKS5AT / LoveUrns</b>	\$145
Crimson Color Metal Keepsake Size Urn with Brushed Gold Lid		
8.0 cm H x 5.20 cm W x 5.20 cm L, 0.190 kg		
<b>24. LENOX KEEPSAKE/1115493</b>	<b>UMAGKSNFT / Elegante Brass</b>	\$145
Classic and elegant porcelain keepsake made from Genuine Lenox Porcelain with 24 karat gold gilding.		
4.45cm L x 4.45cmH, .25kg		
<b>25. AMORE™ RED KEEPSAKE/K363</b>	<b>UMADKSDRM / LoveUrns</b>	\$145
Solid Brass Keepsake with Red and Polished Silver Finish		
7.30 cm H x 4.80 cm W x 4.80 cm L, 0.140 kg		

Product Name	Item Code / Manufacturer	Retail Price
<hr/>		
<b>26. LAUREL MIDNIGHT KEEPSAKE/K292</b> Keepsake featuring silver accents with enamel inlay. 4.45cm W x 4.45cm H, .25kg	<b>UMAEKSLFR / LoveUrns</b>	\$145
<b>27. LAUREL PEARL KEEPSAKE/K297</b> Keepsake featuring silver accents with enamel inlay. 4.45cm W x 4.45cm H, .25kg	<b>UMAEKSLFS / LoveUrns</b>	\$145
<b>28. FLYING DOVES KEEPSAKE/K572</b> Timeless brass keepsake in a blue tone with brushed pewter accents. 7.62 cm L x 4.57 cm W x 6.09 cm H, 0.022 kgs	<b>UMBRKSLFP / LoveUrns</b>	\$145
<b>29. WINGS OF HOPE BLUE KEEPSAKE/K1041</b> Elegant butterfly design keepsakes with blue inlays and pearlescent finish. 8.26cm L x 5.7cm W x 5.7cm H, .25kg	<b>UMBRKSLGM / LoveUrns</b>	\$145
<b>30. WINGS OF HOPE LAVENDER KEEPSAKE/K1040</b> Elegant butterfly design keepsake with lavender inlays and pearlescent finish. 8.26cm L x 5.7cm W x 5.7cm H, .25kg	<b>UMBRKSLGN / LoveUrns</b>	\$145
<b>31. WINGS OF HOPE PEARL KEEPSAKE/K1042</b> Elegant butterfly design keepsake with lavender inlays and pearlescent finish. 8.26cm H x 5.7cm W x 5.7cm H, .25kg	<b>UMBRKSLGS / LoveUrns</b>	\$145
<b>32. WINGS OF HOPE YELLOW KEEPSAKE/K1043</b> Elegant butterfly design keepsake with yellow inlays and pearlescent finish. 8.26 cm L x 5.72 cm W x 5.72 cm H, 0.23 kg	<b>UMBRKSLW1 / LoveUrns</b>	\$145
<b>33. DOVE MINI KEEPSAKE/K232</b> Nickel-plated brass vase mini keepsake with blue accents and dove design. 4.32 cm Dia X 6.86 cm H, 0.14 kg	<b>UMBRMKABP / LoveUrns</b>	\$145
<b>34. MOTHER OF PEARL™ KEEPSAKE/K230</b> Solid Brass Keepsake urn with Mother of Pearl decoration 7.0 cm H x 5.50 cm W x 5.50 cm L, 0.180 kg	<b>UMBRMKMHO / LoveUrns</b>	\$145
<b>35. ELEGANT LEAF™ KEEPSAKE/K540</b> Green Color Metal Keepsake with Leaf Motif 7.50 cm H x 5.0 cm W x 5.0 cm L, 0.110 kg	<b>UMBRKSDLK / LoveUrns</b>	\$145
<b>36. MOONLIGHT HEART/5220H</b> Brass heart keepsake showcases a deep blue finish with a metallic shimmer. 7.62 cm L X 7.62 cm W X 4.32 cm H, 0.23 kg	<b>UMBRKHADO / LoveUrns</b>	\$145

<b>37. ART DECO KEEPSAKE/K218</b>	<b>UMBRFSDFP / LoveUrns</b>	<b>\$145</b>
Brass keepsake with classic and sleek style with enameled bands.		
7.62cm H x .45cm dia, .25kg		
<b>38. SIMPLICITY™ KEEPSAKE/K520</b>	<b>UMZKNKSZSY / LoveUrns</b>	<b>\$145</b>
Midnight Metal Keepsake with silver lid and base		
8.0 cm H x 5.50 cm W x 5.50 cm L, 0.230 kg		
<b>39. SAND MINI KEEPSAKE/321115C3</b>	<b>UOMBMKAEZ / Marble Products</b>	<b>\$145</b>
Sand-colored marble mini keepsake urn with natural accents.		
6.73 cm Dia X 8.89 cm H, 0.41 kg		
<b>40. MINI SCATTERING TUBE - SUNSET/K1DR</b>	<b>UORPMK1DR / BioLife</b>	<b>\$125</b>
The Mini Sunset scattering tube is designed to simplify the scattering process. Durable, dignified, easy-to-use container created from recycled paper and cardboard with no metal components. TSA-compliant		
7.42 cm D x 13.33 cm H		
<b>41. MINI SCATTERING TUBE - ASCENDING/KIF4</b>	<b>UORPMK1F4 / BioLife</b>	<b>\$125</b>
The Mini Ascending scattering tube is designed to simplify the scattering process. Durable, dignified, easy-to-use container created from recycled paper and cardboard with no metal components. TSA-compliant		
7.42 cm D x 13.33 cm H		
<b>42. MINI SCATTERING TUBE - SIMPLICITY/K1FN</b>	<b>UORPMK1FN / BioLife</b>	<b>\$125</b>
The Mini Simplicity scattering tube is designed to simplify the scattering process. Durable, dignified, easy-to-use container created from recycled paper and cardboard with no metal components. TSA-compliant		
7.42 cm D x 13.33 cm H		

## JEWELRY

<b>1. 10K YELLOW GOLD CLADDAGH PENDANT/PCG</b>	<b>UCXUY41EX / Eternity's Touch</b>	<b>\$1,795</b>
This hand crafted Pendant, modeled after the traditional Claddagh Ring; which is popular in the Irish Heritage, holds the traditional design symbolizing love friendship, and loyalty while having the ability to be personalized in remembrance of your loved one.		
<b>2. YELLOW GOLD OVAL KEEPSAKE/KOG</b>	<b>UCEVNYAGEX / Eternity's Touch</b>	<b>\$950</b>
10K yellow gold rimmed oval keepsake with thumbprint, holding your loved ones remains on a 10k gold curb chain with spring ring clasp.		
3.1cm W x 2.17 cm H, 0.003 kg		
<b>3. YELLOW GOLD OVAL PENDANT/POG</b>	<b>XFDKSD6 / Eternity's Touch</b>	<b>\$950</b>
10K yellow gold oval pendant with thumbprint on a 10k gold curb chain with spring ring clasp.		
3.1cm W x 2.18 cm H, 0.002 kg		



Product Name	Item Code / Manufacturer	Retail Price
<b>4. CROSS PENDANT, 14KT GOLD/210269</b> 14kt gold cross pendant without chain. 1.27 cm W x 2.24 cm H, 0.05 kg	<b>UCNPUDCOBX / Batesville</b>	\$595
<b>5. STERLING SILVER CLASSIC HEART BRACELET/KHS</b> .925 sterling silver flat classic heart on 7.5" sterling silver toggle style bracelet with thumbprint. 3.1cm W x 2.03 cm H, 0.021 kg	<b>XFDKSA9 / Eternity's Touch</b>	\$515
<b>6. WOMEN'S CHAIN, 14KT GOLD/210284</b> Rope chain in 14kt gold. 50.8 cm L, 1.0 g	<b>UCNCWDWNBX / Batesville</b>	\$395
<b>7. BLACK BRAIDED LEATHER MEMENTO BRACELET (L)/TB-BE-BB1-L</b> Black braided leather memento bracelet with stainless steel bead.	<b>UCNBMO9FX / LoveUrns</b>	\$375
<b>8. COGNAC SMOOTH LEATHER MEMENTO BRACELET (L)/TB-BE-BL3-L</b> Cognac smooth leather memento bracelet with stainless steel bead.	<b>UCNBMOZ9FX / LoveUrns</b>	\$375
<b>9. RED-BLACK CORD MEMENTO BRACELET (L)/TB-BC9-L</b> Red-Black Cord Memento Bracelet with stainless steel bead.	<b>UCNBUO7YDX / LoveUrns</b>	\$375
<b>10. BLUE-WHITE CORD MEMENTO BRACELET (L)/TB-BC6-L</b> Blue-White Cord Memento Bracelet with stainless steel bead.	<b>UCNBUO8YDX / LoveUrns</b>	\$375
<b>11. DARK GREEN CORD MEMENTO BRACELET (L)/TB-BC10-L</b> Dark Green Cord Memento Bracelet with stainless steel bead.	<b>UCNBUO9YDX / LoveUrns</b>	\$375
<b>12. BROWN SMOOTH LEATHER MEMENTO BRACELET (L)/TB-BE-BL2-L</b> Brown smooth leather memento bracelet with stainless steel bead.	<b>UCIBMO9LFX / LoveUrns</b>	\$375
<b>13. STERLING SILVER OVAL KEEPSAKE (URN)/KOS</b> .925 sterling silver oval keepsake with thumbprint, holding your loved ones remains on a sterling silver curb style chain with spring ring clasp. 1.3 cm W x 2.17 cm H, 0.003 kg	<b>UCEVNSAKEX / Eternity's Touch</b>	\$350
<b>14. STERLING SILVER SIGNATURE HEART KEEPSAKE (URN)/KHS</b> .925 sterling silver heart, keepsake with thumbprint, holding your loved ones remains on a sterling silver curb style chain with spring ring clasp.	<b>UCEVNSALEX / Eternity's Touch</b>	\$350
<b>15. STERLING SILVER TEARDROP KEEPSAKE URN/KTS</b> .925 sterling silver teardrop keepsake with thumbprint holding your loved ones remains on a sterling silver curb style chain with spring ring clasp. 0.78 cm W x 2.03 cm H, 0.002 kg	<b>UCEVNSAMEX / Eternity's Touch</b>	\$350

Product Name	Item Code / Manufacturer	Retail Price
<b>16. CIRCLE OF LIFE PENDANT WITH BIRTHSTONE/19OX</b>	<b>UEIHUS19OX / BioLife</b>	<b>\$325</b>
Crafted from exquisite 925 sterling silver, this pendant exudes timeless elegance. It includes a beautiful birthstone charm that dangles inside. Each pendant comes with an 18" rope chain to honor your cherished memories and connections with elegance and style.		
<b>17. TITANIUM MEMORY TAG/MMT</b>	<b>XFDKSBB / Eternity's Touch</b>	<b>\$295</b>
Titanium memory tag with thumbprint on a keyring 22" stainless steel ball chain, or 22" sterling silver thick chain.		
2.18 cm W x 3.67 cm H, 0.004 kg		
<b>18. STAINLESS STEEL OVAL PENDANT/POP</b>	<b>XFDKSA8 / Eternity's Touch</b>	<b>\$295</b>
Stainless steel oval pendant with thumbprint on a stainless steel curb style chain with spring ring clasp.		
1.36 cm W x 2.18 cm H, 0.002 kg		
<b>19. STERLING SILVER CROSS PENDANT/PXS</b>	<b>XFDKSQZ / Eternity's Touch</b>	<b>\$295</b>
.925 Sterling silver cross pendant with thumbprint on a sterling silver curb style chain with spring ring clasp.		
2.26 cm W x 3.78 cm H, 0.003 kg		
<b>20. STERLING SILVER OVAL PENDANT/POS</b>	<b>XFDKSSV / Eternity's Touch</b>	<b>\$295</b>
.925 Sterling silver, oval, pendant with thumbprint on a sterling silver, curb style chain with spring ring clasp. (Additional Personalization Available)		
1.36 cm W x 2.18 cm H, 0.003 kg		
<b>21. STERLING SILVER FLAT HEART PENDANT/PVS</b>	<b>XFDKSWA / Eternity's Touch</b>	<b>\$295</b>
.925 sterling silver flat heart pendant with thumbprint on a sterling silver curb style chain with spring ring clasp.		
1.5 cm W x 1.75 cm H, 0.002 kg		
<b>22. BUCK KNIFE/HKB-CO</b>	<b>XFDKSBF / Eternity's Touch</b>	<b>\$295</b>
Stainless Steel, buck knife with thumbprint.		
3.1cm W x 7.3 cm H, 0.04 kg		
<b>23. ZIPPO LIGHTER/HZL-BC</b>	<b>XFDKSBG / Eternity's Touch</b>	<b>\$295</b>
Chrome zippo lighter with thumbprint.		
5.7 cm W x 3.9 cm H, 0.65 kg		
<b>24. CROSS PENDANT/PD1090</b>	<b>UCNNUSDWDR / LoveUrns</b>	<b>\$255</b>
Cross Pendant on a 18" sterling silver chain with a 2.25" chain extension.		
1.7 cm W X 2.3 cm H, 0.045 kg		
<b>25. FEATHER PENDANT/PD1220</b>	<b>UCNNWSD6DR / LoveUrns</b>	<b>\$255</b>
Feather Pendant on a 18" sterling silver chain with a 2.25" chain extension.		
1.2 cm W X 3.9 cm H, 0.045 kg		

Product Name	Item Code / Manufacturer	Retail Price
<hr/>		
<b>26. INFINITE LOVE PENDANT/PD1501</b> Infinite Love Pendant on a 18" sterling silver chain with a 2.25" chain extension. 1.8 cm W X 1.7 cm H, 0.045 kg	<b>UCNNWSDRDR / LoveUrns</b>	\$255
<b>27. FLYINGDOVE™ ASHES PENDANT/PD1190</b> Dove shaped Ashes Necklace in Brushed and Shiny Silver	<b>UCNNWSEADR / LoveUrns</b>	\$255
<b>28. HEARTFELT PENDANT/PD1050</b> Heartfelt Pendant on a 18" sterling silver chain with a 2.25" chain extension. 1.9 cm W X 1.7 cm H, 0.045 kg	<b>UCNNWSEHDG / LoveUrns</b>	\$255
<b>29. LEANING HEART PENDANT/PD1000</b> Leaning Heart Pendant on a 18" sterling silver chain with a 2.25" chain extension. 1.4 cm W X 1.6 cm H, 0.045 kg	<b>UCNNWSENDR / LoveUrns</b>	\$255
<b>30. LEANING HEART WITH CRYSTAL PENDANT/PD1530</b> Leaning Heart with Crystal Pendant on a 18" sterling silver chain with a 2.25" chain extension. 1.7 cm W X 2.0 cm H, 0.045 kg	<b>UCNNWSENDV / LoveUrns</b>	\$255
<b>31. LOVE HEART GOLD VERMEIL NECKLACE AND PENDANT/PD1011</b> Heart Shaped Ashes Necklace in Shiny Vermeil Gold 0.9 cm H x 1.7 cm W	<b>UCNNWSERDG / LoveUrns</b>	\$255
<b>32. LOVE ROSE PENDANT/PD1550</b> Love Rose Pendant on a 18" sterling silver chain with a 2.25" chain extension. 0.6 cm W X 3.0 cm H, 0.045 kg	<b>UCNNWSEUDV / LoveUrns</b>	\$255
<b>33. MOTHER OF PEARL PENDANT/PD1290</b> Mother of Pearl Pendant on a 18" sterling silver chain with a 2.25" chain extension. 1.9 cm W X 1.9 cm H, 0.045 kg	<b>UCNNWSEYDG / LoveUrns</b>	\$255
<b>34. SOUL BIRD NECKLACE AND PENDANT/PD1280</b> Soul bird shaped Ashes Necklace in Shiny Silver 0.8 cm H x 1.6 cm W	<b>UCNNWSFYDR / LoveUrns</b>	\$255
<b>35. CUFF CREMATION BRACELET - GOLD/VAOX</b> A timeless and sophisticated piece, this gold plated stainless steel cuff bracelet allows you to carry a part of your loved one's ashes discreetly. An elegant tribute to their memory.	<b>UCIBUGVAOX / BioLife</b>	\$245
<b>36. CUFF CREMATION BRACELET - BLACK/CUOX</b> Crafted with precision from high-quality black stainless steel, this bracelet discreetly holds a small amount of your loved one's ashes. A meaningful way to honor and remember, wherever you go.	<b>UCIBULCUOX / BioLife</b>	\$245

<b>37. CUFF CREMATION BRACELET - SILVER/BROX</b>	<b>UCIBUSBROX / BioLife</b>	<b>\$245</b>
Designed for understated elegance, this stainless steel cuff bracelet discreetly holds a small amount of your loved one's ashes. A symbol of enduring love and cherished memories, worn with pride.		
<b>38. STAINLESS STEEL MONEY CLIP/ACS-OS</b>	<b>XFDKSBL / Eternity's Touch</b>	<b>\$225</b>
Stainless steel money clip with thumbprint.		
6.5 cm W x 2 cm H, 0.15 kg		
<b>39. MEMORY BEAR/HMB</b>	<b>XFDKSA5 / Eternity's Touch</b>	<b>\$195</b>
Memory teddy bear with rubber silencer covered stainless steel memory tag with thumbprint.		
34 cm W x 39 cm H, 0.22 kg		
<b>40. DOG TAG/248594</b>	<b>UCNNULDTBX / Batesville</b>	<b>\$195</b>
Stainless steel dog tag on a 24" stainless steel beaded chain.		
2.87 cm L x 0.33 cm W x 5.08 cm H, 0.05 kg		
<b>41. CUDDLEBEAR WITH PINK CRYSTAL CHARM/BD2080</b>	<b>UCNIWSDYDR / LoveUrns</b>	<b>\$175</b>
Sterling silver CuddleBear with Pink Crystal Charm. Bracelet sold separately.		
0.8 cm W X 1.2 cm H, 0.045 kg		
<b>42. CUDDLEBEAR WITH BLUE CRYSTAL CHARM/BD2081</b>	<b>UCNIWSDYFR / LoveUrns</b>	<b>\$175</b>
Sterling silver CuddleBear with Blue Crystal Charm. Bracelet sold separately.		
0.8 cm W X 1.2 cm H, 0.045 kg		
<b>43. GLOWING HEART CHARM/BD2013</b>	<b>UCNIWSEDDG / LoveUrns</b>	<b>\$155</b>
Sterling silver Glowing Heart Charm. Bracelet sold separately.		
1.2 cm W X 1.2 cm H, 0.045 kg		
<b>44. HEART TO HEART WITH CRYSTAL CHARM/BD2023</b>	<b>UCNIWSEFDR / LoveUrns</b>	<b>\$155</b>
Sterling silver Heart to Heart with Crystal Charm. Bracelet sold separately.		
1.1 cm W X 1.2 cm H, 0.045 kg		
<b>45. MOTHER OF PEARL CHARM/BD2122</b>	<b>UCNIWSEYDG / LoveUrns</b>	<b>\$155</b>
Sterling silver Mother of Pearl Charm. Bracelet sold separately.		
1.2 cm W X 1.2 cm H, 0.045 kg		
<b>46. CROSS CHARM/BD2050</b>	<b>UCNIWSCODR / LoveUrns</b>	<b>\$155</b>
Sterling silver Cross Charm. Bracelet sold separately.		
1.0 cm W X 1.5 cm H, 0.045 kg		
<b>47. SIMPLY REMEMBERED HEART/IPU-MH</b>	<b>XFDKSA6 / Eternity's Touch</b>	<b>\$150</b>
Stainless steel simply remembered heart with thumbprint or text, holding your loved ones remains on a stainless steel curb style chain with spring ring clasp.		
3.1cm W x 2.84 cm H, 0.012 kg		

<b>48. SIMPLY REMEMBERED TREE OF LIFE/IPU-TL</b>	<b>XFDKSBC / Eternity's Touch</b>	<b>\$150</b>
Stainless steel simply remembered tree of life with thumbprint or text, holding your loved ones remains on a stainless steel curb style chain with spring ring clasp.		
2.85 cm W x 1.83 cm H, 0.13 kg		
<b>49. SIMPLY REMEMBERED BAR/IEU-SB</b>	<b>XFDKSA1 / Eternity's Touch</b>	<b>\$150</b>
Stainless Steel simply remembered bar holding your loved ones remains, with option for Text, on a stainless steel, curb style chain with spring ring clasp		
3.1cm W x 2.46 cm H, 0.005 kg		
<b>50. SIMPLY REMEMBERED BULLET/IPU-SB</b>	<b>XFDKSBJ / Eternity's Touch</b>	<b>\$150</b>
Stainless steel simply remembered bullet with thumbprint or text, on a stainless steel curb style chain with spring ring clasp.		
3.1cm W x 4 cm H, 0.014 kg		
<b>51. SIMPLY REMEMBERED CYLINDER/IPU-SC</b>	<b>XFDKSBC / Eternity's Touch</b>	<b>\$150</b>
Stainless steel simply remembered cylinder with thumbprint or text, on a stainless steel curb style chain with spring ring clasp.		
3.1cm W x 4 cm H, 0.017 kg		
<b>52. HIGH RES FINGERPRINT</b>	<b>XFDKSA4 / Eternity's Touch</b>	<b>\$125</b>
High res cropped fingerprint.		
<b>53. BRACELET STERLING SILVER/AC1001</b>	<b>UCNBWSBRDR / LoveUrns</b>	<b>\$115</b>
Sterling silver bracelet.		
23.50 cm, 0.09 kg		
<b>54. WINGS OF HOPE BLUE CHARM/BD2091</b>	<b>UCNIWSFDDR / LoveUrns</b>	<b>\$85</b>
Sterling silver Wings of Hope Charm. Bracelet sold separately.		
1.3 cm W X 1.0 cm H, 0.045 kg		
<b>55. WINGS OF HOPE LAVENDER CHARM/BD2090</b>	<b>UCNIWSFGDR / LoveUrns</b>	<b>\$85</b>
Sterling silver Wings of Hope Charm. Bracelet sold separately.		
1.3 cm W X 1.0 cm H, 0.045 kg		
<b>56. WINGS OF HOPE PEARL CHARM/BD2092</b>	<b>UCNIWSFIDR / LoveUrns</b>	<b>\$85</b>
Sterling silver Wings of Hope Charm. Bracelet sold separately.		
1.3 cm W X 1.0 cm H, 0.045 kg		
<b>57. WINGS OF HOPE YELLOW CHARM/BD2093</b>	<b>UCNIWYYEDR / LoveUrns</b>	<b>\$85</b>
Butterfly shaped Yellow Ashes Bead in Shiny Silver		
0.8 cm H x 1.3 cm W		
<b>58. HEARTFELT EARRINGS/ER1050</b>	<b>UCNKWSEHDG / LoveUrns</b>	<b>\$55</b>
Sterling silver Heartfelt Earrings		
1.1 cm W X 0.9 cm H, 0.045 kg		

Product Name	Item Code / Manufacturer	Retail Price
<b>59. LEANING HEART EARRINGS/ER1000</b> Sterling silver Leaning Heart Earrings 1.1 cm W X 1.0 cm H, 0.045 kg	<b>UCNKWSENDR / LoveUrns</b>	\$55
<b>60. MOTHER OF PEARL EARRINGS/ER290</b> Sterling silver Mother of Pearl Earrings 1.2 cm W X 1.2 cm H, 0.045 kg	<b>UCNKWSEYDG / LoveUrns</b>	\$55





# INFORMATION REGARDING TERMS & CONDITIONS WHEN ENTERING INTO A CONTRACT

**PAYMENT TERMS:** Payment is required to be made by the date of the service, if not paid in full by such date a DEFAULT CHARGE OF TWO (2%) PER MONTH (ANNUAL PERCENTAGE RATE OF TWENTY-FOUR (24%) PERCENT) will be charged on any portion of the unpaid balance due. It is agreed that any additional items ordered in conjunction with those items listed will be paid at the time ordered. If suit is brought for the collection of said amount, or any portion thereof, you agree to pay a reasonable attorney's fee to be affixed by the Court and included in the judgment in such suit.

**CANCELLATION RIGHTS:** The purchaser, or someone designated by the purchaser, may cancel an agreement by providing notice of the cancellation in writing to the Provider. A partial or full refund of money paid, if any, may be available based on the terms of the agreement and the law. Any refund owed will be issued within 30 days. If the agreement meets all of the requirements of the Act and is cancelled within 30 days of the agreement date and before any services or supplies have been provided, the Provider will refund all amounts paid under this agreement in accordance with the Act. If the agreement meets all of the requirements of the Act and is cancelled after 30 days of this agreement date and before any services or supplies have been provided, the Provider will refund the amount paid under the agreement plus any income earned on the amount paid or that should have been earned on the amount paid if it had been deposited as required, but the Provider may retain an additional 10% of the amount paid to a maximum of \$350. If the agreement meets all of the requirements of the Act and is cancelled after some of the services or supplies have been provided as directed under the terms of this agreement, the maximum refund required will be the amount paid under the agreement plus any income earned on the amount paid or that should have been earned on the amount paid if it had been deposited as required, and in some circumstances permitted by the Act the Provider may retain the value of the services and supplies that have been delivered. If the agreement fails to meet the requirements of ss.40(1) of the Act, the maximum refund required will be the amount paid under the agreement plus income earned on the amount paid or that should have been earned on the amount paid if it had been deposited as required. In some circumstances permitted by the Act, the Provider may retain the value of the services or supplies that have been delivered.

**POSSESSION OF CREMATED REMAINS AND REFUNDABLE DEPOSIT:** When cremation is selected the Provider may require the purchaser to pay a refundable deposit of \$350. The Provider will retain the cremated remains for one year from the date of cremation. If the cremated remains are not claimed within one year, the Provider may inter the cremated remains in a cemetery, including in a common lot for which the cemetery is the interment rights holder, and the Provider may retain the deposit referred to in this section. If the cremated remains are claimed before they are interred, the operator will refund any deposit paid. amount paid or that should have been earned on the amount paid if it had been deposited as required. In some circumstances permitted by the Act, the Provider may retain the value of the services or supplies that have been delivered.

**WARRANTIES:** No claims are made to you as to the merchandise or other offerings of the Provider (embalming, casket, outer burial container) to the effect that embalming or the use of any merchandise available from this funeral home will delay the decomposition of the human remains for a long term or indefinite time, or that any such merchandise will protect the body from gravesite substances if such was not the case. No representations or warranties are made to you about the protective features of caskets or outer burial containers other than those made by the manufacturer.

**PREPAYMENT OPTIONS:** For your convenience, we offer two funding options when prepaying services or supplies. When prepaying, you pay for the services and supplies today and the money will be used to pay for the services and supplies when they are delivered at the time of death.

Trust: You may pay the money directly to us and we will place it in trust, where it will accrue interest until the contract is fulfilled (when the services and supplies are delivered) or the contract is cancelled.

Investment of Funds: Within 35 days, the payment(s) to the Provider, less the permitted amount defined below, will be placed and held in a pooled trust fund or an individual trust account for the purchaser until the services and supplies are provided or this agreement is cancelled and a refund is issued in accordance with the terms of this agreement. If the money is invested in a pooled trust fund, the money will be invested

and held by a third party trustee. If the money is invested in an individual trust account, the money will be held in a guaranteed investment certificate.

**Permitted Amount:** On or after the 31st day after the day on which an agreement was made, the Provider may retain 10% of the agreement price (or amount paid, whichever is lower) up to a total maximum of \$350. This amount need not be invested in trust and if retained, is a credit against any amount the operator may retain if the agreement is cancelled.

**Value of Trust Once per Year:** Once in a year, if the purchaser requests, the Provider will provide information about the amount in trust and how it is invested. If the money is in an individual trust account, the purchaser will receive a statement that sets out: the current value of the account(s) as of the end of the month before the request, the name of the depository, and the name or type of investment in which the payment(s) have been placed. If the money is held in a pooled trust fund with a third party trustee, the purchaser will receive a statement that sets out the name of the trustee and the current value of the purchaser's money as of the end of the month before the request.

**Insurance:** You may purchase an insurance contract where the proceeds of the insurance contract will be used to pay for the services or supplies at the time they are delivered or the contract is cancelled.

**Details of Insurance Contract:** The Purchaser agrees to purchase an annuity or life insurance policy ("Policy") through the Insurance Company selected by Service Corporation International (Canada) ULC and assign said Policy to the Provider.

**Provision of Goods and Services:** The services and merchandise selected in prepaid agreement will be sold at the time of death pursuant to a funeral service order/purchase agreement between the Provider and the representative(s) of the Recipient at that time.

The Funeral Home guarantees that the amount to be charged for providing the Goods and Services selected and the Third Party Items of the Funeral Goods and Services Agreement will not exceed the death benefit under the Insurance Policy at the time of death of the Recipient, if the Provider's then current retail price of the funeral goods and services selected is less than the amount payable under the Annuity or Insurance Policy, the Provider will refund the difference to the Annuity or Insurance Policy Beneficiary. The amount applicable to taxes is determined on the basis of the applicable tax laws in effect at the date this Agreement is signed. In the event the taxes due at the date of death are greater than those specified in this Agreement, the Provider will charge the difference at that time.

**Cancellation:** The purchaser, or someone designated in this agreement by the purchaser, may cancel the agreement by providing notice of the cancellation in writing to the Provider.

Before the death of the Recipient, but after the death of the Purchaser, the Recipient or his/her personal representative may cancel the Agreement. After the death of the Recipient, the Recipient's personal representative may cancel the Agreement at any time before the goods and services have been provided. In the event of the cancellation of the Agreement prior to the death of the Recipient, they may request cancellation or surrender of the Policy according to the policy terms. If the Agreement is cancelled after the death of the Purchaser, but prior to the Recipient's death, the benefit will be paid in accordance with the terms of the Policy.

If the funeral goods and services are not provided by the Provider or any provider affiliated with or owned by SCI (Canada) ULC, the Agreement is cancelled and a payment will be made in accordance with the Policy. If the agreement meets all of the requirements of the Act and is cancelled after some of the services or supplies have been provided as directed under the terms of the agreement, the maximum refund required will be the amount to be paid out under the terms of the insurance contract, and in some circumstances permitted by the Act the Provider may retain the value of the services and supplies that have been delivered.

If this agreement fails to meet the requirements of ss.40(1) of the Act, the maximum refund required will be the amount paid under this agreement plus income earned on the amount paid or that should have been earned on the amount paid if it had been deposited as required. In some circumstances permitted by the Act, the Provider may retain the value of the services or supplies that have been delivered.

*Every Detail Remembered™*

**Dignity®**  
MEMORIAL

*"Thank you for placing your trust and confidence in the staff of Families First Funeral Home and Tribute Centre."*

RESPECT

INTEGRITY

SERVICE

EXCELLENCE

ENDURING

RELATIONSHIPS

PROUD TO BE PART OF  
SERVICE CORPORATION INTERNATIONAL (CANADA) ULC  
& THE FOLLOWING SERVICE PROVIDERS.

Business Name	Address	Phone
MacKinnon Family Funeral Home	55 Mill St. East Acton, ON L7J1H4	(519) 853-0350
Families First Funeral Home and Tribute Centre	585 Sandwich Street S. Amherstburg, ON N9V0E2	(519) 969-5841
Thompson Funeral Home	530 Industrial Parkway South Aurora, ON L4G6W8	(905) 727-5421
Andrews Community Funeral Centre - Bramalea Chapel	8190 Dixie Road Brampton, ON L6T5N9	(905) 456-8190
Thorpe Brothers Funeral Home & Chapel	96 West Street Brantford, ON N3T3E7	(519) 759-2211
Barthel Funeral Home	566 Queenston Road Cambridge, ON N3H3J8	(519) 653-3251
Coutts Funeral Home & Cremation Centre	96 St Andrews Street Cambridge, ON N1S1M8	(519) 621-1650
T. Little Funeral Home & Cremation Centre	223 Main Street Cambridge, ON N1R1X2	(519) 623-1290
Lahaie & Sullivan Cornwall Funeral Home - East Branch	614 First Street East Cornwall, ON K6H1M1	(613) 933-2841
Lahaie & Sullivan Cornwall Funeral Home - West Branch	20 Seventh Street West Cornwall, ON K6J2X7	(613) 932-8482
Salon Funeraire M. John Sullivan Funeral Home	341 Pitt St Cornwall, ON K6J3R1	(613) 938-1039
Courtice Funeral Chapel	1587 Highway #2 Courtice, ON L1E2R7	(905) 432-8484
Marlatt Funeral Home, Swackhamer Chapel	195 King Street West Dundas, ON L9H1V5	(905) 627-7452
Gilbert MacIntyre & Son Dublin Chapel	252 Dublin St. N Guelph, ON N1H4P3	(519) 822-4731
Gilbert MacIntyre & Son Hart Chapel	1099 Gordon St. Guelph, ON N1G4X9	(519) 821-5077
Cresmount Funeral Home - Fennell Chapel	322 Fennell Ave East Hamilton, ON L9A1T2	(905) 387-2111
Markey-Dermody Funeral Home	1774 King Street East Hamilton, ON L8K1V7	(905) 547-1121
Marlatt Funeral Home & Cremation Centre	615 Main Street East Hamilton, ON L8M1J4	(905) 528-6303
Modest Cremation	615 Main Street East Hamilton, ON L8M1J4	(905) 526-9605
Brown Funeral Home & Cremation Centre	429 2nd Street South Kenora, ON P9N1G7	(807) 468-8633

Tribute Centre	LaSalle, ON N9J2B9	
Needham Funeral Service	520 Dundas Street London, ON N6B1W6	(519) 434-9141
Hetherington & Deans Funeral Chapel	5176 Victoria Ave Niagara Falls, ON L2E4E3	(905) 354-5614
Oshawa Funeral Home	847 King Street West Oshawa, ON L1J2L4	(905) 721-1234
First Memorial Funeral Services - Fairview Chapel	259 Rue St-Patrick Street Ottawa, ON K1N5K4	(613) 860-2424
Maison Funéraire Racine, Robert & Gauthier Funeral Home	180 chemin Montréal Road Ottawa, ON K1L1B4	(613) 241-3680
McEvoy-Shields Funeral Home and Chapel	1411 Hunt Club Road Ottawa, ON K1V1A6	(613) 737-7900
Comstock-Kaye Life Celebration Centre	356 Rubidge Street Peterborough, ON K9H4C7	(705) 745-4683
Arthur Funeral Home - Barton & Kiteley Chapel	492 Wellington Street East Sault Ste. Marie, ON P6A2L9	(705) 759-2522
Paul O'Connor Funeral Home	1939 Lawrence Ave. E Scarborough, ON M1R2Y8	(416) 751-7890
Hulse & English Funeral Home & Chapel	75 Church Street St. Catharines, ON L2R3C7	(905) 684-6346
Kane-Jerrett Funeral Homes	8088 Yonge Street Thornhill, ON L4J1W3	(905) 889-8889
Delmoro Funeral Home	61 Beverly Hills Drive Toronto, ON M3L1A2	(416) 249-4499
Giffen-Mack and Trull Funeral Home	2570 Danforth Ave Toronto, ON M4C1L3	(416) 698-3121
Jerrett Funeral Homes	1141 St Clair Ave West Toronto, ON M6E1B1	(416) 654-7744
Jerrett Funeral Homes	660 Kennedy Road Toronto, ON M1K2B5	(416) 266-4404
Kane-Jerrett Funeral Homes	6191 Yonge Street Toronto, ON M2M4K4	(416) 223-6050
Rosar-Morrison Funeral Home & Chapel	467 Sherbourne Street Toronto, ON M4X1K5	(416) 924-1408
Giffen-Mack Funeral Home & Cremation Centre	4115 Lawrence Ave East West Hill, ON M1E2S2	(416) 281-6800
Anderson Funeral Home & Cremation Centre	895 Ouellette Ave Windsor, ON N9A4J5	(519) 254-3223
Families First Funeral Home and Tribute Centre	3260 Dougall Avenue Windsor, ON N9E1S6	(519) 969-5841
Families First Funeral Home and Tribute Centre	1065 Lauzon Road Windsor, ON N853M8	(519) 969-5841
Families First Signature Tributes Event Centre	3310 Dougall Avenue Windsor, ON N9E1S6	(519) 419-5660



# OUR CELEBRATION OF LIFE PROFESSIONALS



Debra Latremouille



Kirsten van den Steene



Bill Robert



Colin McIntyre



Jerry Marcotte



Elizabeth Spurduti



Danielle Mayrand



Taylor Clark



Basia Lojewski



Peter Lojewski



Iain Pearson



Sara Macri



Carly St. Pierre



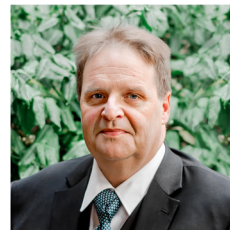
Darrin Ellis



Mike Macklem



Samm Morencie



Troy Whittle



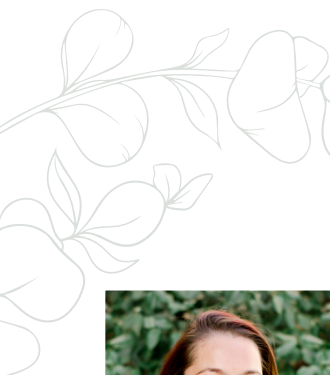
Chelsey Mullins



Alexis Johnson



Kenny Dickens



Tara Breckles  
LOCATION MANAGER



Jessica Sylvestre  
LOCATION MANAGER



John Vettese  
LOCATION MANAGER



Laura Cash  
OFFICE MANAGER



Sue Pare  
OFFICE MANAGER



Michaela Belanger  
OFFICE MANAGER



Courtney Wilkinson-  
Lightfoot GRAPHICS MANAGER



Randi Clark  
ASSISTANT MANAGER



Jennifer Wells  
GENERAL MANAGER



Brian & Mary-Lynn Parent  
FOUNDERS



Logan Young



Heather Brokalakis  
(nee Soucie)



Patrick Forbes



Jillian Vasile  
PRE PLANNING ADVISOR



Katie Campbell

OUR FAMILY  
SERVICE  
COUNSELLORS