

# SENIOR APARTMENTS

## PINECREST

OF COUNTRY MANOR

### FLOOR PLAN OPTIONS

<u>ONE BEDROOM</u>	<u>BATHS</u>	<u>SQ. FT.</u>	<u># OF APTS</u>	<u>RENT</u>
<b>Birch</b>	1 Shower	688	4	\$2,750
<b>Cedar</b>	1 Shower	804	26	\$2,975
<b>Hemlock (Island)</b>	1 Shower	946	14	\$3,195
<b>Optional Detached Garages</b>			8	\$75

Anticipated rates effective 07/01/2026  
Final rates 60 days prior to rental

### RENT INCLUDES

- Utilities (Heat, Water, Electricity, AC, Refuse)
- Secure Private Internet
- Daily Courtesy Check
- Weekly Light Housekeeping (Kitchen & Bathroom)
- Scheduled Activities, Socials, Wellness & Education Programs
- Electronic Locking System
- Assistance In Securing Additional Supportive & Home Care Services
- On-Site Management & Maintenance
- Optional Detached Garages

### AMENITIES

- Chapel
- Salon/Spa
- Social Lounges

### MEAL PROGRAM MONTHLY RATES

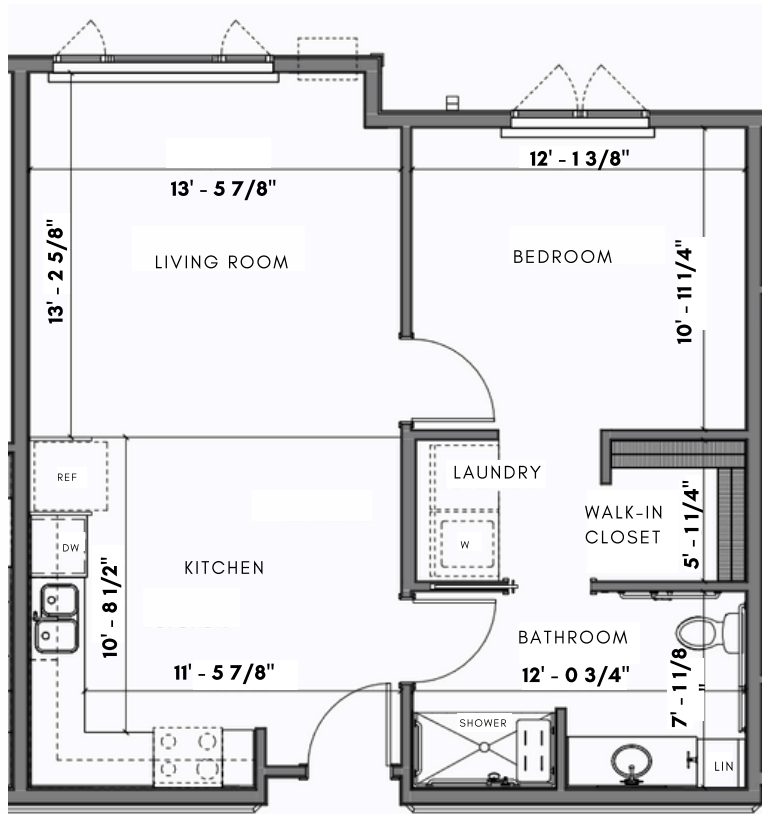
- **Continental Breakfast** \$320
- **Lunch or Supper** \$455
- **Daily Snack** \$120

 (218) 513-2253  
 9040 Country Manor Way Brainerd, MN 56401

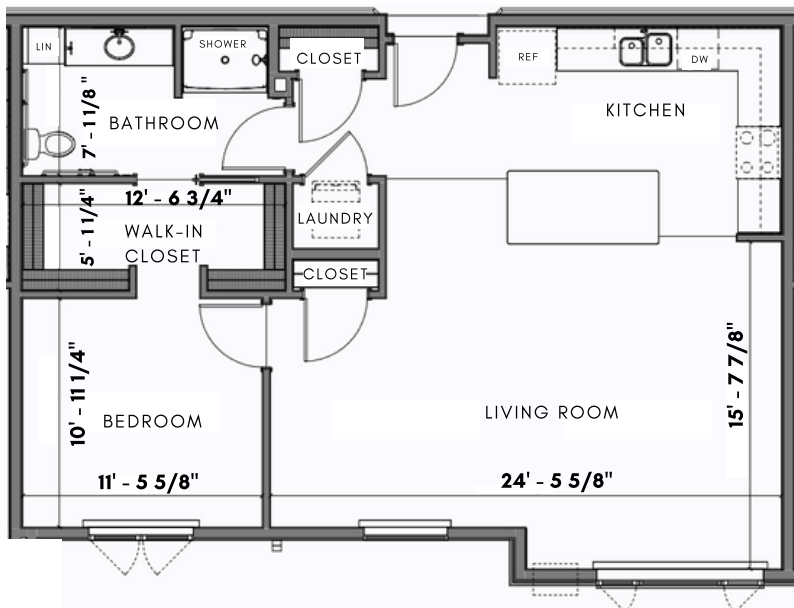
 [www.pinecrestofcountrymanor.org](http://www.pinecrestofcountrymanor.org)  
 [pinecrest@countrymanor.org](mailto:pinecrest@countrymanor.org)

SENIOR APARTMENTS · LUXURY APARTMENTS · SUITES

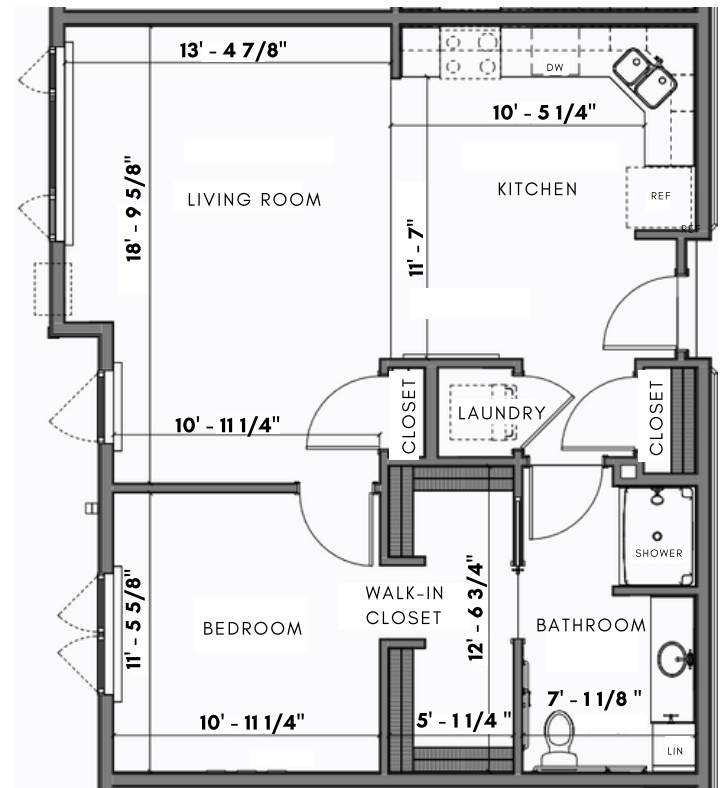
# SENIOR APARTMENTS FLOOR PLANS



**BIRCH** | 688 sqft



**HEMLOCK** | 946 sqft



**CEDAR** | 804 sqft

# LUXURY APARTMENTS

## PINECREST

OF COUNTRY MANOR

### FLOOR PLAN OPTIONS

Anticipated rates effective 07/01/2026  
Final rates 60 days prior to rental

#### ONE BEDROOM

**Hickory**

#### **BATHS**

1.5 Shower

#### **SQ. FT.**

962

#### **# OF APTS**

7

#### **RENT**

\$3,575

#### TWO BEDROOM

**(Garage Included)**

**Oak**

2 Shower/Tub

1,043

12

\$4,025

**Spruce** (Island/Pantry)

2 Shower/Tub

1,118

7

\$4,175

**Walnut** (Island/Fireplace)

2 Shower/Tub

1,260

6

\$4,495

#### **Optional Garages**

7

\$95

#### UNIQUE APARTMENT FEATURES

- Individual Forced Air Heating & Cooling System
- Washer/Dryer (In-Unit)
- Dishwasher/Microwave
- Patio/Deck
- 9 Foot Ceilings
- Attached Garages

#### RENT INCLUDES

- Utilities (Heat, Water, Electricity, AC, Refuse)
- Secure Private Internet
- Daily Courtesy Check
- Weekly Light Housekeeping (Kitchen & Bathroom)
- Scheduled Activities, Socials, Wellness & Education Programs
- Electronic Locking System
- Assistance In Securing Additional Supportive & Home Care Services
- On-Site Management & Maintenance
- Attached Garage (2 BR Apartments)

#### AMENITIES

- Chapel
- Salon/Spa
- Social Parlors
- Hobby Rooms
- Wellness Center

#### MEAL PROGRAM MONTHLY RATES

- **Continental Breakfast** \$320
- **Lunch or Supper** \$455
- **Daily Snack** \$120

 **(218) 513-2253**

 **9040 Country Manor Way Brainerd, MN 56401**



[www.pinecrestofcountrymanor.org](http://www.pinecrestofcountrymanor.org)

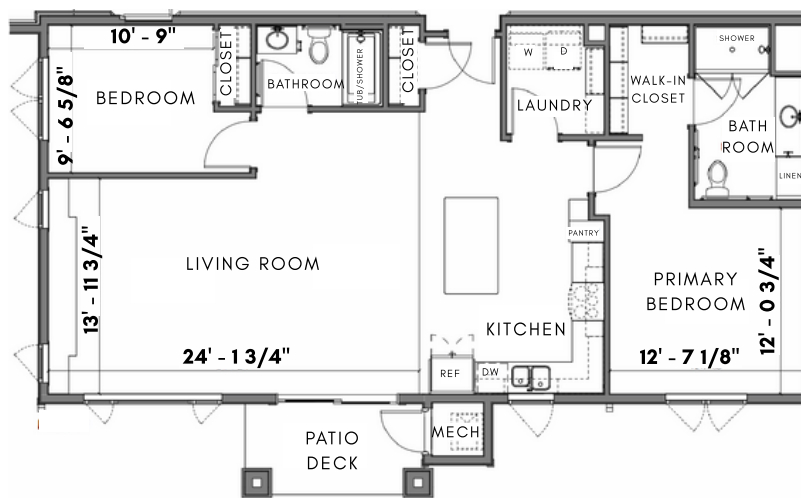
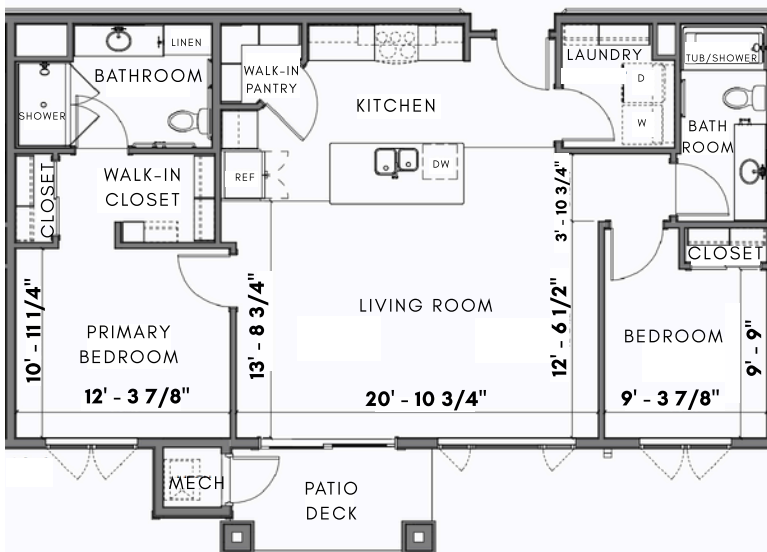
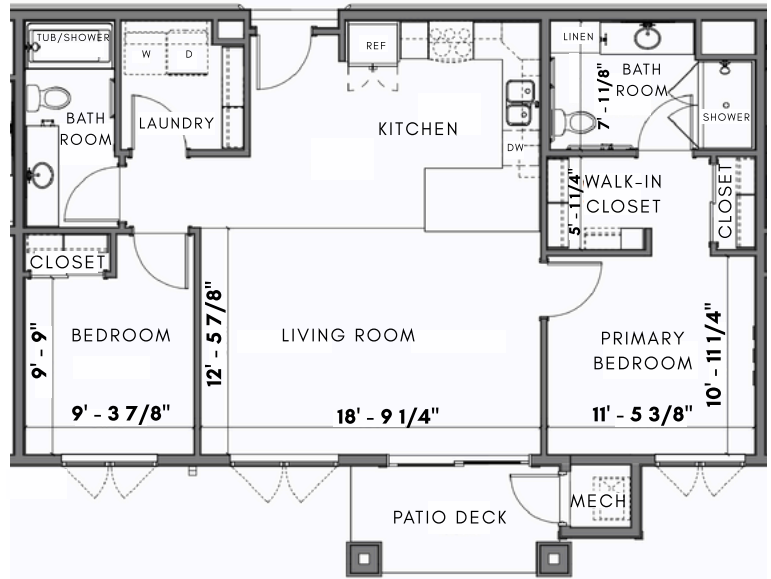


[pinecrest@countrymanor.org](mailto:pinecrest@countrymanor.org)

**SENIOR APARTMENTS · LUXURY APARTMENTS · SUITES**

# LUXURY APARTMENTS

## FLOOR PLANS



# ENHANCED ASSISTED LIVING/MEMORY CARE SUITES & APARTMENTS

## PINECREST OF COUNTRY MANOR

*Pinecrest Suites are designed for individuals who thrive in a more intimate setting. Residents may require additional health care supports. Additional fees will be applied based on Registered Nurse assessment.*

Anticipated rates effective 07/01/2026  
Final rates 60 days prior to rental

## FLOOR PLAN OPTIONS

<u>SUITES</u>	<u>BATHS</u>	<u>SQ. FT.</u>	<u># OF APTS</u>	<u>RENT</u>
One Bedroom	1 Shower	500	14	\$4,825
One Bedroom	1 Shower	534	1	\$4,975
Two Bedroom	2 Showers	849	1	\$5,295
Two Bedroom	2 Showers	869	2	\$5,395

## APARTMENTS

One Bedroom	1 Shower	694	10	\$5,195
Two Bedroom	2 Showers	998	2	\$5,695

**Base Fee/Person:** \$1025/month **\*Second Person Fee:** \$2050/month

## RENT INCLUDES

- Utilities (Heat, Water, Electricity, AC, Refuse)
- Secure Internet
- Life Enrichment Program
- Housekeeping (2x/Week)
- Laundry Service (Up To 3 Loads/Scheduled Laundry Day)
- Wellness Program
- On-Site Management & Maintenance
- Wander Alarm System

## AMENITIES

- Chapel
- Salon/Spa
- Sensory Room
- Secure Courtyard

## MEAL PLAN OPTIONS

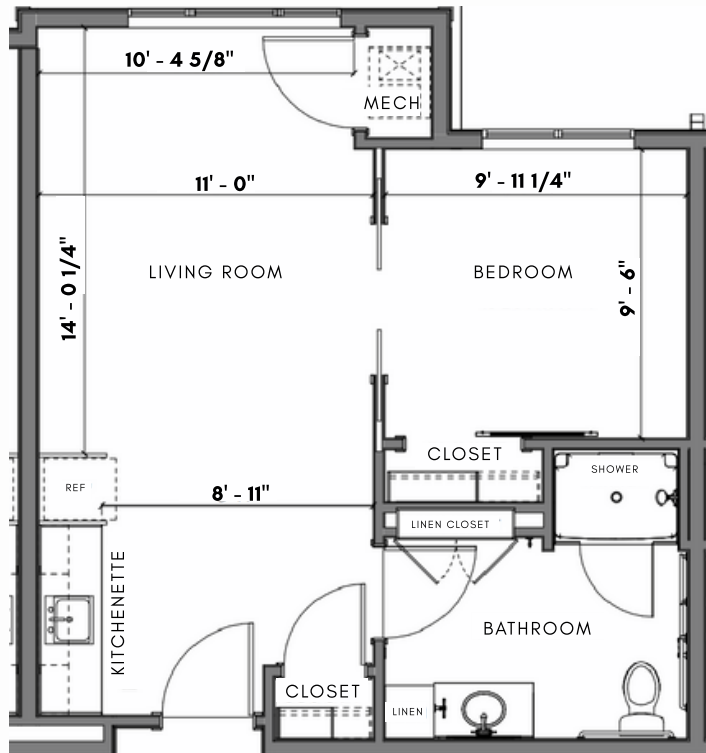
- **Continental Breakfast** \$320
- **Lunch or Supper** \$455
- **Daily Snack** \$120

 **(218) 513-2253**  
 9037 Country Manor Way Brainerd, MN 56401

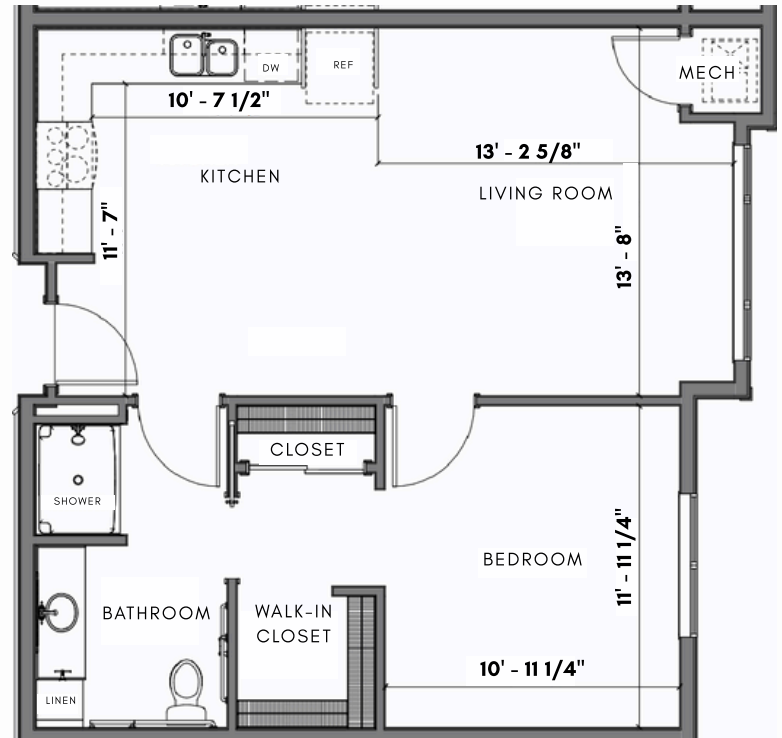
 [www.pinecrestofcountrymanor.org](http://www.pinecrestofcountrymanor.org)  
 [pinecrest@countrymanor.org](mailto:pinecrest@countrymanor.org)

SENIOR APARTMENTS · LUXURY APARTMENTS · SUITES

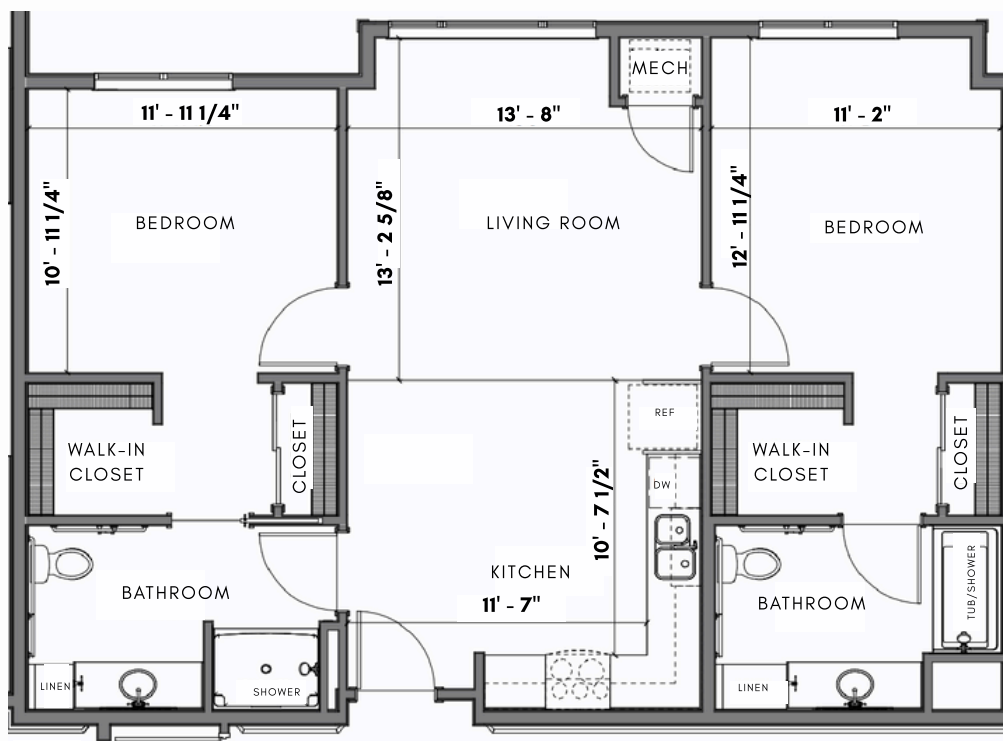
# ENHANCED ASSISTED LIVING/ MEMORY CARE FLOOR PLANS



**ONE BEDROOM SUITE** | 500 sqft



**ONE BEDROOM** | 694 sqft



**TWO BEDROOM** | 998 sqft