





Entrance Door Hardware

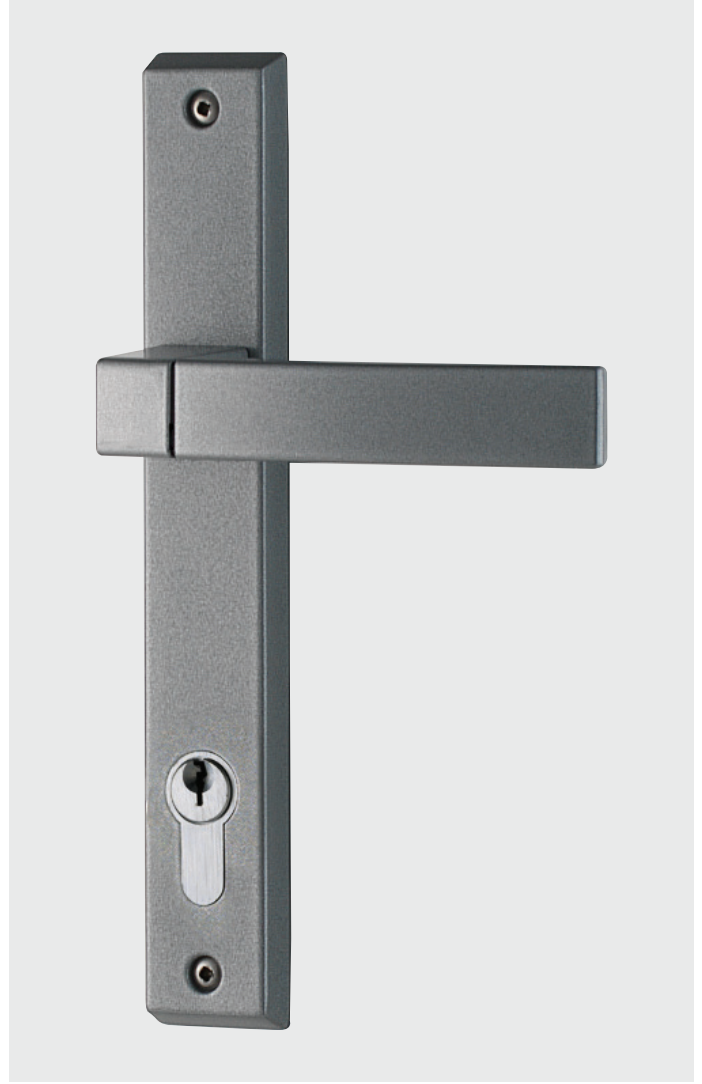
Our range of hardware gives you choice in shape, function and finish, all with secure and convenient locking features.

Our most popular options are shown on the following pages. Refer to your local manufacturer for the full range.



Urbo

HARDWARE



ALL HANDLES FEATURE:

- A comfortable, smooth handle that can be powdercoated to your choice of colour.

Pull handle

- Lock is fixed separately to the door, and is activated by a key or interior turn knob. A four-point locking system is available.

Available in

255mm and 323mm

Lever handle

- Offers multi-point locking, and when the handle is lifted upwards it activates locking rods at the top and bottom of the door for added security.

Available in

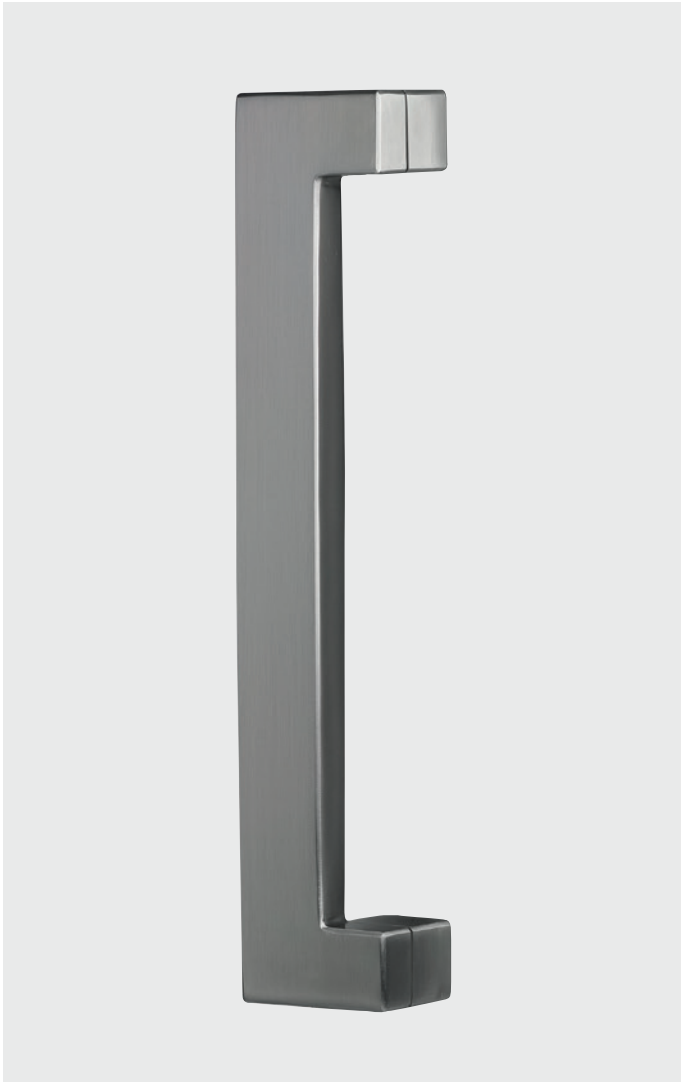
Large
Handle 150mm x 30mm with a base plate of 292mm h x 44mm w

Small
Handle 120mm x 22mm with a base plate of 212mm h x 32mm w



Icon

HARDWARE



ALL HANDLES FEATURE:

- A strong, contemporary handle made of 316 grade stainless steel
- Has a brushed stainless steel finish.

Pull handle

- Lock is fixed separately to the door, and is activated by a key or interior turn knob. A four-point locking system is available

Available in

330mm, 630mm, 930mm, 1230mm, 1830mm

Lever handle

- Offers multi-point locking, and when the handle is lifted upwards it activates locking rods at the top and bottom of the door for added security

Available in

Large
Handle 150mm x 30mm with a base plate of 290mm h x 45mm w

Small
Handle 110mm x 21mm with a base plate of 210mm h x 30mm w

Yale

HARDWARE



ALL HANDLES FEATURE:

- 304 grade stainless steel
- A lock that is fixed separately to the door and is activated by a key or interior turn knob.

142 pull handle

- Contemporary handles with a round look

Available in

300mm, 450mm and 600mm

143 pull handle

- Contemporary handles with a flush square look

Available in

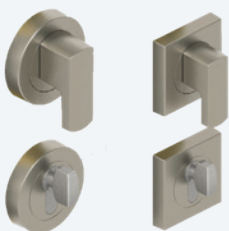
300mm, 450mm, and 600mm

145 pull handle

- Contemporary handles with a square look

Available in

255mm, 375mm and 525mm



Apex Turn Set

The Apex turn set provides the ideal locking solution for your entrance door. Providing a consistent finish to match your stainless steel pull handles, the Apex turn set allows for ease of use and secure locking.

Windsor

HARDWARE



ALL HANDLES FEATURE:

- 304 grade stainless steel
- A lock that is fixed separately to the door and is activated by a key or interior turn knob.

Polo pull handle

- Contemporary handles with smooth, radiused edges

Available in

450mm, 600mm and 900mm

25mm square pull handle

- Square look 25mm x 25mm handles available in 450mm h and 600mm h

Available in

300mm, 450mm, 600mm, 900mm, 1200mm and 1800mm

32mm round pull handle

- Round look 32mm diameter handles

Available in

600mm, 900mm, 1200mm and 1800mm



Windsor Turn Set

Specifically designed for New Zealand conditions. A neat accompaniment to a set of pull handles offering easy and secure locking of your entrance door.