

25 YEARS OF
FRONTIER™

Rural Lifestyle Product Guide 2026





IF WE DON'T HAVE IT, YOU PROBABLY DON'T NEED IT.

Explore a New Frontier™

Never underestimate the capabilities of your John Deere tractor—especially with nearly 400 implements and attachments available from Frontier. From landscaping and snow removal to seeding and tillage, you can undertake nearly any challenge on your acreage.

And you can be confident that every Frontier product will work as promised. Why? Because each one is designed, engineered, tested, and manufactured specifically for John Deere tractors. Plus, our equipment is fully supported with service, parts, and customer service throughout our North America John Deere dealer network—in addition to being backed with a two-year warranty^{1,2} and a six-year gearbox warranty.¹

¹Warranties apply to products purchased as of November 1, 2025. Contact your local dealer or see JohnDeere.com/TUWarranty or JohnDeere.ca/TUWarranty.

²24-month warranty on new Frontier implements. Terms, conditions, exclusions, and warranty limitations apply.

This literature has been compiled for worldwide circulation. Features, specifications, and attachments subject to change without notice. While general information, pictures, and descriptions are provided, some illustrations and text may include finance, credit, insurance, product options, and accessories NOT AVAILABLE in all regions. PLEASE CONTACT AN AUTHORIZED JOHN DEERE DEALER FOR DETAILS. John Deere and Frontier reserve the right to change specifications, design, and price of the products described in this literature without notice.



Discover which implements and attachments are compatible with your tractor by scanning the QR code.

For 25 years, we've built implements to work with John Deere tractors like no other manufacturer in the world.

Contents

Landscape Equipment

Rear Blades	2
Box Blades · Land Planes	3
Landscape Rakes · Post Hole Diggers	4
Soil Pulverizers · Wood Chippers · 3-Point Trenchers	5
Core Aerators · 3-Point Debris Blowers · Power Rakes	6

Cutting and Mowing Equipment

Rotary Cutters · Grooming Mowers	7
Medium-Duty Grooming Mowers · Flex-Wing Grooming Mowers · Sickle Bar Mowers	8
Flail Mowers · Material Collection Systems	9

Tillage Equipment

Tandem Disk Harrows · One-Row Cultivators	10
Rotary Tillers · Plows	11
Field Cultivators · Subsoilers · Middle Busters	12

Seeding Equipment

Overseeders · Conservation Seeders	13
Broadcast Spreaders · Pendular Spreaders	14

Hay and Forage Equipment

Heavy-Duty Wheel Rake · High-Capacity Wheel Rakes	15
High-Capacity Carted Wheel Rakes · Carted Wheel Rakes · Hay Tedders	16
Bale Spears · Round-Bale Huggers	17

Livestock and Equine Equipment

Sprayers	18
Manure Forks · Chain-Unloading Manure Spreaders · Pro Finishers	19
Inline Bale Wrapper · 3-Point-Bale Unroller	20

Snow Removal Equipment

3-Point Snow Blowers	21
Front-Mounted Snow Blowers · Snow Pushes	22
Front Blades · Tractor-Mounted Front Blade	23

Material Handling Equipment

Pallet Forks	24
Mechanical Grapple · Pallet Fork Grapples · Root Grapples	25
Debris Grapples · Rock Buckets	26
4-in-1 Buckets · Loader Carrier Adapters	27
Loader-Mount Rotary Brooms · Hydraulic Power Packs	28



Landscape Equipment



Rear Blades

Put your gardening, landscaping, driveway, and ditch-maintenance chores behind you with a sturdy rear blade.

MODEL	DUTY	WORKING WIDTH	ENGINE HP ¹	HITCH
RB2060L	Economy	60 in. (152.4 cm)	25 hp (18.7 kW) maximum	Ltd. Cat. 1
RB2060	Standard	60 in. (152.4 cm)	19–40 hp (14.1–29.8 kW)	Cat. 1
RB2160H	Standard Plus	60 in. (152.4 cm)	45 hp (33.6 kW) maximum	Cat. 1
RB2160	Medium	60 in. (152.4 cm)	60 hp (44.7 kW) maximum	Cat. 1
RB2072	Standard	72 in. (182.9 cm)	23–50 hp (17.1–37.3 kW)	Cat. 1
RB2172H	Standard Plus	72 in. (182.9 cm)	45 hp (33.6 kW) maximum	Cat. 1
RB2172	Medium	72 in. (182.9 cm)	60 hp (44.7 kW) maximum	Cat. 1
RB2272	Medium Plus	72 in. (182.9 cm)	70 hp (52.2 kW) maximum	Cat. 2
RB2084	Standard	84 in. (213.4 cm)	27–50 hp (20.1–37.3 kW)	Cat. 1
RB2184H	Standard Plus	84 in. (213.4 cm)	45 hp (33.6 kW) maximum	Cat. 1
RB2184	Medium	84 in. (213.4 cm)	60 hp (44.7 kW) maximum	Cat. 1
RB2284	Medium Plus	84 in. (213.4 cm)	70 hp (52.2 kW) maximum	Cat. 2
RB2307 ²	Heavy	84 in. (213.4 cm)	110 hp (82.0 kW) maximum	Cat. 2
RB2196H	Standard Plus	96 in. (243.8 cm)	45 hp (33.6 kW) maximum	Cat. 1
RB2196	Medium	96 in. (243.8 cm)	60 hp (44.7 kW) maximum	Cat. 1
RB2296	Medium Plus	96 in. (243.8 cm)	70 hp (52.2 kW) maximum	Cat. 2
RB2308 ²	Heavy	96 in. (243.8 cm)	110 hp (82.0 kW) maximum	Cat. 2
RB2408 ²	Heavy Plus	96 in. (243.8 cm)	145 hp (108.1 kW) maximum	Cat. 2 or 3
RB2309 ²	Heavy	108 in. (274.3 cm)	110 hp (82.0 kW) maximum	Cat. 2
RB2409 ²	Heavy Plus	108 in. (274.3 cm)	145 hp (108.1 kW) maximum	Cat. 2 or 3
RB2310 ²	Heavy	120 in. (304.8 cm)	110 hp (82.0 kW) maximum	Cat. 2
RB2410 ²	Heavy Plus	120 in. (304.8 cm)	145 hp (108.1 kW) maximum	Cat. 2 or 3

¹Engine horsepower requirements listed for four-wheel drive (4WD) tractors. See Operator's Manual for two-wheel drive (2WD) tractor engine horsepower requirements and additional power or weight requirements

²Hydraulic tilt, swing, and shift functions available.

Box Blades

Frontier box blades level uneven ground and simplify contouring and grading. The heavy-duty BB52 Series comes standard with hydraulic scarifiers.



MODEL	DUTY	WORKING WIDTH	ENGINE HP ¹	HITCH
BB5048L	Economy	48 in. (121.9 cm)	45 hp (33.6 kW) maximum	Ltd. Cat. 1
BB5060L	Economy	60 in. (152.4 cm)	45 hp (33.6 kW) maximum	Ltd. Cat. 1
BB5048	Standard	48 in. (121.9 cm)	45 hp (33.6 kW) maximum	Cat. 1
BB5060	Standard	61.5 in. (156.2 cm)	65 hp (48.5 kW) maximum	Cat. 1
BB5065	Standard	66 in. (167.6 cm)	55 hp (41.0 kW) maximum	Cat. 1
BB5072	Standard	73.5 in. (186.7 cm)	65 hp (48.5 kW) maximum	Cat. 1
BB5084	Standard	85.5 in. (217.2 cm)	65 hp (48.5 kW) maximum	Cat. 1
BB5096	Standard	97.5 in. (247.7 cm)	65 hp (48.5 kW) maximum	Cat. 1
BB2172	Medium	72 in. (182.9 cm)	70 hp (52.2 kW) maximum	Cat. 1
BB2184	Medium	84 in. (213.4 cm)	70 hp (52.2 kW) maximum	Cat. 1
BB5172	Heavy	72 in. (182.9 cm)	120 hp (86.5 kW) maximum	Cat. 1 and 2
BB5184	Heavy	84 in. (213.4 cm)	120 hp (86.5 kW) maximum	Cat. 1 and 2
BB5196	Heavy	96 in. (243.8 cm)	120 hp (86.5 kW) maximum	Cat. 1 and 2
BB5272	Heavy	72 in. (182.9 cm)	120 hp (86.5 kW) maximum	Cat. 1 and 2
BB5284	Heavy	84 in. (213.4 cm)	120 hp (86.5 kW) maximum	Cat. 1 and 2
BB5296	Heavy	96 in. (243.8 cm)	120 hp (86.5 kW) maximum	Cat. 1 and 2

Land Planes

Level driveways, fill potholes, or recondition gravel areas with all-purpose land planes. A durable frame allows you to smooth over challenging terrain. Heavy-duty options available.



MODEL	WORKING WIDTH	SCARIFIERS	ENGINE HP ¹	HITCH
LP2054L	54 in. (137.2 cm)	4	18–30 hp (13.4–22.4 kW)	Ltd. Cat. 1
LP2160	60 in. (152.4 cm)	4	25–50 hp (18.6–37.3 kW)	Cat. 1
LP2172	72 in. (182.9 cm)	5	35–50 hp (26.1–37.3 kW)	Cat. 1
LP2184	84 in. (213.4 cm)	6	40–90 hp (29.8–67.1 kW)	Cat. 1 and 2
LP2196	96 in. (243.8 cm)	7	40–90 hp (29.8–67.1 kW)	Cat. 1 and 2

¹Engine horsepower requirements listed for four-wheel drive (4WD) tractors. See Operator's Manual for two-wheel drive (2WD) tractor engine horsepower requirements and additional power or weight requirements.



Landscape Rakes

Cleaning up and grooming your land is simple with a landscape rake. From debris and brush removal to surface leveling and final seed preparation, this implement is up to the challenge of tough landscaping jobs.

MODEL	DUTY	WORKING WIDTH	ENGINE HP	HITCH
LR5048L	Economy	48 in. (121.9 cm)	45 hp (33.6 kW) maximum	Ltd. Cat. 1
LR5060L	Economy	60 in. (152.4 cm)	45 hp (33.6 kW) maximum	Ltd. Cat. 1
LR5060	Standard	60 in. (152.4 cm)	65 hp (48.5 kW) maximum	Cat. 1
LR5072	Standard	72 in. (182.9 cm)	65 hp (48.5 kW) maximum	Cat. 1
LR5084	Standard	84 in. (213.4 cm)	65 hp (48.5 kW) maximum	Cat. 1
LR5096	Standard	96 in. (243.8 cm)	65 hp (48.5 kW) maximum	Cat. 1
LR2172	Medium	72 in. (182.9 cm)	23–55 hp (17.2–41.0 kW)	Cat. 1
LR2184	Medium	84 in. (213.4 cm)	23–55 hp (17.2–41.0 kW)	Cat. 1
LR2196	Medium	96 in. (243.8 cm)	27–55 hp (20.1–41.0 kW)	Cat. 1



Post Hole Diggers

Drill down quickly and deeply on the farm or on the jobsite with a post hole digger.

MODEL	AUGER LENGTH	ENGINE HP	HITCH
PHD125	36 in. (91.4 cm)	15–25 hp (11.2–18.6 kW)	Cat. 1 and Ltd. Cat. 1
PHD235	48 in. (121.9 cm)	20–35 hp (14.9–26.1 kW)	Cat. 1
PHD395	48 in. (121.9 cm)	35–95 hp (26.1–70.8 kW)	Cat. 1 and 2



Soil Pulverizers

Sod growers, landowners, landscapers, and contractors can prepare soil for seeding or sodding with a soil pulverizer.



MODEL	DUTY	WORKING WIDTH	ENGINE HP	SCARIFIER TEETH	HITCH
SP2048B	Standard	48 in. (121.9 cm)	30–45 hp (22.3–33.6 kW)	Bar Type	Cat. 1
SP2060B	Standard	60 in. (152.4 cm)	30–45 hp (22.4–33.6 kW)	Bar Type	Cat. 1
SP2072B	Standard	72 in. (182.9 cm)	30–45 hp (22.4–33.6 kW)	Bar Type	Cat. 1

Wood Chippers

Wood chippers make big cleanup jobs fast and easy. They quickly chew up tree branches, turning them into wood chips or wood chip mulch.



MODEL	FEED OPENING	LIMB	ENGINE HP	HITCH
WC1103	3 x 5.5 in. (7.6 x 14.0 cm)	3 in. (7.6 cm)	18–40 hp (13.4–29.8 kW)	Cat. 1
WC1105	5.5 x 8 in. (14 x 20.3 cm)	5 in. (12.7 cm)	25–85 hp (18.6–63.4 kW)	Cat. 1 and 2
WC1205	5.5 x 8 in. (14 x 20.3 cm)	5 in. (12.7 cm)	35–95 hp (26.1–70.8 kW)	Cat. 1 and 2

3-Point Trenchers

Dig uniform trenches for any small drainage or utility project with the 3-point trencher. Just hitch up to a compact tractor and go.



MODEL	BOOM LENGTH	PTO HP	TRANSMISSION REQUIREMENTS	HITCH
DT1136	36 in. (91.4 cm)	15–30 hp (11.2–22.4 kW)	Hydrostatic Transmission	Cat. 1



Core Aerators

Keep your lawn, park, or golf course healthy with a core aerator. These tools help reduce soil compaction and promote air, water, and nutrient circulation. Holes created by the aerator also provide a place for seeds to contact soil and germinate.

MODEL	DUTY	WORKING WIDTH	ENGINE HP	HITCH
CA2048E	Economy	48 in. (121.9 cm)	20–50 hp (14.9–37.3 kW)	Cat. 1
CA2060E	Economy	60 in. (152.4 cm)	20–50 hp (14.9–37.3 kW)	Cat. 1
CA2072E	Economy	72 in. (182.9 cm)	20–50 hp (14.9–37.3 kW)	Cat. 1
CA2060	Standard	60 in. (152.4 cm)	20–70 hp (14.9–52.2 kW)	Cat. 1 and 2
CA2072	Standard	72 in. (182.9 cm)	20–70 hp (14.9–52.2 kW)	Cat. 1 and 2



3-Point Debris Blowers

Put the final touches on landscape projects with a 3-point debris blower. They are ideal for quick cleanup of sidewalks, driveways, and golf courses.

MODEL	PTO HP	HITCH
BL1130	30 hp (22.4 kW) minimum	Cat. 1 and 2



Power Rakes

Versatile power rakes make it fast and convenient to cultivate, level, grade, or restore soil surfaces.

MODEL	ANGLE ADJUSTMENT	WORKING WIDTH	PTO HP	HITCH
PR1148	Hydraulic	48 in. (121.9 cm)	15–22 PTO hp (11.2–16.4 kW)	Cat. 1
PR1160	Hydraulic	60 in. (152.4 cm)	18–35 PTO hp (13.4–26.1 kW)	Cat. 1
PR1172	Hydraulic	72 in. (182.9 cm)	30–40 PTO hp (22.4–29.8 kW)	Cat. 1
PR1184	Hydraulic	84 in. (213.4 cm)	42–80 tractor hp ¹ (31.3–59.6 kW)	Cat. 1 and 2

¹Tractor must meet ASAE lift capacity requirement.

Cutting and Mowing Equipment



Rotary Cutters¹

If you need a rugged, affordable rotary cutter that can handle heavy grass, thick brush, and weeds, a Frontier rotary cutter is worth a closer look.



MODEL	WORKING WIDTH	PTO HP	HITCH
RC2048	48 in. (121.9 cm)	18–45 hp (13.4–33.6 kW)	Cat. 1 and 2
RC2060	60 in. (152.4 cm)	19–65 hp (14.2–48.5 kW)	Cat. 1 and 2
RC2072	72 in. (182.9 cm)	25–65 hp (18.6–48.5 kW)	Cat. 1 and 2
RC2084	84 in. (213.4 cm)	45–90 hp (33.6–67.1 kW)	Cat. 1 and 2

Grooming Mowers

The grooming mower delivers a smooth cut for lawns, sports fields, and golf courses.



MODEL	WORKING WIDTH	PTO HP	HITCH
GM4060E	60 in. (152.4 cm)	15–35 hp (11.2–26.1 kW)	Cat. 1 and Ltd. Cat. 1
GM4072E	72 in. (182.9 cm)	25–35 hp (18.6–26.1 kW)	Cat. 1
GM2060R	60 in. (152.4 cm)	20–50 hp (14.9–37.3 kW)	Cat. 1
GM2072R	72 in. (182.9 cm)	20–50 hp (14.9–37.3 kW)	Cat. 1
GM2084R	84 in. (213.4 cm)	20–50 hp (14.9–37.3 kW)	Cat. 1
GM4060	60 in. (152.4 cm)	15–50 hp (11.2–37.3 kW)	Cat. 1
GM4072	72 in. (182.9 cm)	20–50 hp (14.9–37.3 kW)	Cat. 1
GM4084	84 in. (213.4 cm)	25–50 hp (18.6–37.3 kW)	Cat. 1

¹Quik-Knect™ system and Quick-Hitch compatible.



Medium-Duty Grooming Mowers¹

To maintain a clean and level look for various lawn types, Frontier medium-duty grooming mowers feature rear discharge and a high-speed blade. They are also compatible with the iMatch™ hitch system (optional kit available).

MODEL	WORKING WIDTH	ENGINE HP	DECK THICKNESS	HITCH
GM1190	90 in. (228.6 cm)	25–50 hp (18.6–37.3 kW)	7 Gauge Steel	Cat. 1
GM2109R	110 in. (279.4 cm)	40–70 hp (28.9–52.2 kW)	8 Gauge Steel	Cat. 1
GM2190R	90 in. (228.6 cm)	30–70 hp (22.4–52.2 kW)	8 Gauge Steel	Cat. 1



Flex-Wing Grooming Mowers

Go with the flex-wing grooming mowers for a quality cut on uneven fields. They feature wider working widths to make quick work on sod farms, golf courses, and parks.

MODEL	WORKING WIDTH	PTO HP	HITCH
FM4012	12 ft (3.7 m)	25–60 hp (18.6–44.7 kW)	Pull-Type
FM4112	12 ft (3.7 m)	30 hp (22.4 kW) minimum	Clevis Hitch
FM4115	15 ft (4.6 m)	35 hp (26.1 kW) minimum	Clevis Hitch
FM4117	17 ft (5.2 m)	40 hp (29.8 kW) minimum	Clevis Hitch



Sickle Bar Mowers

Sickle bar mowers mow up or down hillsides with a blade angle that can be adjusted from -45 degrees to +90 degrees.

MODEL	WORKING WIDTH	ENGINE HP	HITCH
SB3106	5 ft, 9 in. (1.75 m)	25–50 hp (18.6–37.3 kW)	Cat 1, Cat 2, iMatch Compatible
SB3107	6 ft, 9 in. (2.05 m)	25–50 hp (18.6–37.3 kW)	Cat 1, Cat 2, iMatch Compatible
SB3108	7 ft, 8 in. (2.35 m)	25–50 hp (18.6–37.3 kW)	Cat 1, Cat 2, iMatch Compatible

¹Quik-Knect compatible.

Flail Mowers

Frontier flail mowers handle tough brush and turf grass equally well. Sharp knives cut and reduce material to a smaller size, providing a finished look in various settings.



MODEL	CUTTING WIDTH	ENGINE HP	MINIMUM TRACTOR WEIGHT	HITCH
FL1053	53 in. (134.6 cm)	20 – 45 hp (15 – 33.6 kW)	1,400 lb. (635 kg)	Cat. 1
FL1061	61 in. (155 cm)	25 – 45 hp (18.6 – 33.6 kW)	1,550 lb. (703.1 kg)	Cat. 1
FL1045S	45 in. (114.3 cm)	15 – 45 hp (11.2 – 33.6 kW)	2,600 lb. (1,179.3 kg)	Cat. 1
FL1061S	61 in. (155 cm)	25 – 45 hp (18.6 – 33.6 kW)	2,600 lb. (1,179.3 kg)	Cat. 1
FL1163	63 in. (160 cm)	30 – 55 hp (22.4 – 41 kW)	2,600 lb. (1,179.3 kg)	Cat. 1
FL1169	69 in. (175.3 cm)	35 – 55 hp (26.1 – 41 kW)	2,600 lb. (1,179.3 kg)	Cat. 1
FL1163S	63 in. (160 cm)	45 – 75 hp (33.6 – 56 kW)	3,700 lb. (1,678.3 kg)	Cat. 1
FL1169S	69 in. (175.3 cm)	50 – 75 hp (37.3 – 56 kW)	3,700 lb. (1,678.3 kg)	Cat. 1
FL1262	62 in. (157 cm)	35 – 80 hp (26.1 – 59.7 kW)	2,600 lb. (1,179.3 kg)	Cat. 1 and 2
FL1291	91 in. (231 cm)	50 – 80 hp (37.3 – 59.7 kW)	2,600 lb. (1,179.3 kg)	Cat. 1 and 2
FL1272S	72 in. (183 cm)	40 – 105 hp (30 – 78.3 kW)	5,300 lb. (2,404 kg)	Cat. 2

Material Collection Systems

Attach the Frontier material collection system to your compatible John Deere drive-over mower deck and make cleaning up grass clippings and leaves from your lawn easier than it's ever been.



MODEL	HOPPER CAPACITY	MOWER COMPATIBILITY	TRACTOR COMPATIBILITY
MC2014	14 Bushel (393.3 L)	54D, 60D, 72D	1023E, 1025R, 2025R, 2032R, 2038R, 3033R, 3039R, 3046R
MC2120	20 Bushel (704.8 L)	54D, 60D, 72D	1023E, 1025R, 2025R, 2032R, 2038R, 3033R, 3039R, 3046R

You, John Deere, and Frontier. Let's work together.

Tillage Equipment



Tandem Disk Harrows

Breaking up tough ground calls for tough equipment. Like our tandem disk harrows. Notched front blades are standard. Gang angles are easy to adjust requiring no tools.

MODEL	WORKING WIDTH	ENGINE HP	WEIGHT	DISK QTY.	HITCH
TM1048L	48 in. (121.9 cm)	15–25 hp (11.2–18.6 kW)	437 lb. (198.2 kg)	12	Limited Cat. 1
TM1062L	62 in. (157.5 cm)	20–35 hp (14.9–26.1 kW)	490 lb. (222.3 kg)	16	Limited Cat. 1
TM1164	62 in. (157.5 cm)	25–50 hp (18.6–37.3 kW)	684 lb. (310.3 kg)	16	Cat. 1
TM1173	73 in. (185.4 cm)	35–75 hp (26.1–55.9 kW)	721 lb. (327 kg)	16	Cat. 1
TM1179	79 in. (200.7 cm)	35–75 hp (26.1–55.9 kW)	764 lb. (346.5 kg)	20	Cat. 1
TM1275	75 in. (190.5 cm)	40–75 hp (29.8–55.9 kW)	1000 lb. (453.6 kg)	16	Cat. 1
TM1292	92 in. (233.7 cm)	40–75 hp (29.8–55.9 kW)	1140 lb. (517.1 kg)	20	Cat. 1
TM1395	96 in. (243.8 cm)	45–100 hp (33.6–74.6 kW)	1350 lb. (612.3 kg)	20	Cat. 1 and 2
TM1411D	124 or 128 in. (315 or 325.1 cm)	45–75 hp (33.6–56.2 kW)	3,086–3,232 lb. (1,399.8–1,466 kg) ¹	28–32	Drawn
TM1412D	138 or 145 in. (350.5 or 368.3 cm)	55–80 hp (41.1–59.6 kW)	2,900–3,066 lb. (1,315.4–1,390.7 kg) ¹	32–36 32–36	Drawn Drawn



One-Row Cultivators

Control weeds with the one-row cultivator. Adjustable row widths make this tool valuable for gardeners and small farm operators.

MODEL	ROW WIDTH	TRACTOR HP	HITCH
PC1001	30–60 in. (76.2–152.4 cm)	25–45 hp (18.6–33.6 kW)	3-Pt. Cat. 1

¹Operating weight of TM14 Series Tandem Disk Harrows are dependent on working width selected. See Operator's Manual for more details.

Rotary Tillers

Put the final touches on gardens or seedbeds before planting with a rotary tiller.



MODEL	DUTY	WORKING WIDTH	ENGINE HP	HITCH
RT3042	Standard	42 in. (106.7 cm)	15–35 hp (11.2–26.1 kW)	Ltd. Cat. 1
RT3042R ¹	Standard	42 in. (106.7 cm)	15–35 hp (11.2–26.1 kW)	Ltd. Cat. 1
RT3049	Standard	49 in. (124.5 cm)	18–35 hp (13.4–26.1 kW)	Ltd. Cat. 1
RT3049R ¹	Standard	49 in. (124.5 cm)	18–35 hp (13.4–26.1 kW)	Ltd. Cat. 1
RT3062	Standard	62 in. (157.5 cm)	24–60 hp (17.9–44.7 kW)	Cat. 1
RT3062R ¹	Standard	62 in. (157.5 cm)	24–60 hp (17.9–44.7 kW)	Cat. 1
RT3073	Standard	73 in. (185.4 cm)	30–60 hp (22.4–44.7 kW)	Cat. 1 and 2
RT3073R ¹	Standard	73 in. (185.4 cm)	30–60 hp (22.4–44.7 kW)	Cat. 1 and 2
RT3081	Standard	81 in. (205.7 cm)	40–60 hp (29.8–44.7 kW)	Cat. 1 and 2
RT3081R ¹	Standard	81 in. (205.7 cm)	40–60 hp (29.8–44.7 kW)	Cat. 1 and 2
RT1265	Medium	65 in. (165.1 cm)	30–60 hp (22.4–44.7 kW)	3-Pt. Cat. 1 and 2
RT1273	Medium	73 in. (185.4 cm)	30–80 hp (22.4–59.7 kW)	3-Pt. Cat. 2
RT2283	Medium	83 in. (210.8 cm)	30–80 hp (22.4–59.7 kW)	3-Pt. Cat. 2
RT2293	Medium	93 in. (236.2 cm)	40–100 hp (29.8–74.6 kW)	3-Pt. Cat. 2

Plows

Prepare garden space or planting areas with one- and two-bottom plows. Our 3-point plows allow you to turn over sod in your field or backyard.



MODEL	MOLDBOARD	WIDTH	ENGINE HP	HITCH
PB1001	One-Bottom	14 in. (35.6 cm)	25–50 hp (13.4–37.3 kW)	3-Pt. Cat. 1
PB1002	Two-Bottom	40 in. (101.6 cm)	25–50 hp (13.4–37.3 kW)	3-Pt. Cat. 1

¹Rotary tiller model numbers ending in "R" indicate reverse tine rotation



Field Cultivators

Prepare seedbeds, mix crop residue into soil, and blend soil to provide water and nutrients to crops with a versatile field cultivator.

MODEL	MOLDBOARD	WIDTH	ENGINE HP	HITCH
PB1001	One-Bottom	14 in. (35.6 cm)	25-50 hp (13.4-37.3 kW)	3-Pt. Cat. 1



Subsoilers

This subsoiler features a steel shank with reversible point that rips through hard ground to break up compaction, improving water drainage and root growth.

MODEL	WORKING DEPTH	ENGINE HP	HITCH
PS1001	Up to 24 in. (61 cm)	25-45 hp (18.6-33.6 kW)	3-Pt. / Cat. 1



Middle Busters

Break up hard ground between garden rows using a convenient middle buster equipped with a double-wing cutting blade.

MODEL	WORKING DEPTH	ENGINE HP	HITCH
PM1001	Up to 12 in. (30.5 cm)	25-45 hp (18.6-33.6 kW)	3-Pt. / Cat. 1

Seeding Equipment



Overseeders

Get the lush, green turf you demand with a Frontier overseeder. Perfect for property owners, golf courses, school systems, and municipalities.



MODEL	DRIVE	WORKING WIDTH	ENGINE HP	HITCH
GS4048L	Ground Driven	48 in. (121.9 cm)	15–35 hp (11.2–26.1 kW)	Ltd. Cat. 1
GS4060L	Ground Driven	60 in. (152.4 cm)	20–45 hp (14.9–33.6 kW)	Ltd. Cat. 1
GS4160	Ground Driven	60 in. (152.4 cm)	30–65 hp (22.3–48.5 kW)	Cat. 1 and 2
GS4172	Ground Driven	72 in. (182.8 cm)	40–125 hp (30–93.2 kW)	Cat. 1 and 2
GS4184	Ground Driven	84 in. (213.3 cm)	50–125 hp (37.2–93.2 kW)	Cat. 1 and 2

Conservation Seeders

Renovate pastures or landscape roadsides with a conservation seeder. They make quick work of any type of seeding, from native prairie grasses to large legumes.



MODEL	WORKING WIDTH	ENGINE HP	HITCH
CS1360	5 ft (1.5 m)	30 hp (22.4 kW) minimum	Cat. 1 and 2
CS1384	7 ft (2.1 m)	50 hp (37.3 kW) minimum	Cat. 1 and 2



Broadcast Spreaders

Cover a lot of ground in a hurry with a broadcast spreader. These spreaders distribute fertilizer, salt, sand, small grains, and more.

MODEL	MAXIMUM SPREAD WIDTH	WEIGHT FULL	MAXIMUM PTO HP	HITCH
SS1022B	20 ft (6.1 m)	288 lb. (131 kg)	30 hp (22.4 kW)	Pull-Type
SS1023B	23 ft (7.0 m)	379 lb. (172 kg)	50 hp (37.3 kW)	Cat. 0 and 1
SS1035B	20 ft (6.1 m)	446 lb. (202 kg)	45 hp (33.6 kW)	Pull-Type
SS1036B	23 ft (7.0 m)	498 lb. (226 kg)	50 hp (37.3 kW)	Cat. 1
SS1067B	46 ft (14.0 m)	842 lb. (382 kg)	50 hp (37.3 kW)	Cat. 1
SS2036B	23 ft (7.0 m)	498 lb. (226 kg)	50 hp (37.3 kW)	Cat. 1
SS2067B	46 ft (14.0 m)	842 lb. (382 kg)	50 hp (37.3 kW)	Cat. 1
SS3067B	49 ft (14.9 m)	988 lb. (448 kg)	60 hp (44.7 kW)	Cat. 1



Pendular Spreaders

A precision pendular spreader provides uniform spreading, even if materials have different weights, sizes, and textures.

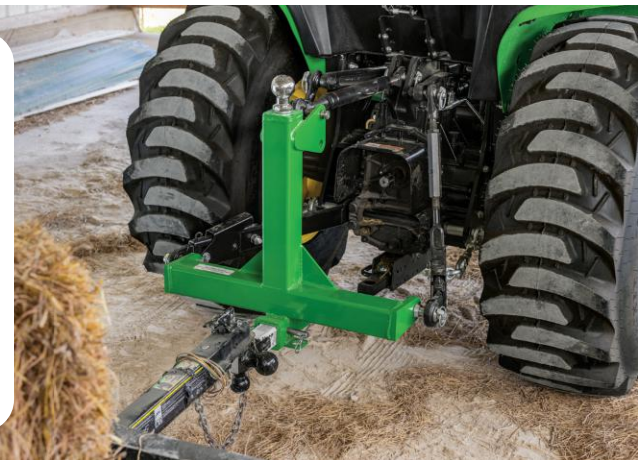
MODEL	SPREAD WIDTH	WEIGHT FULL	MAXIMUM PTO HP	HITCH
SS1079P	17–47 ft (5.2–14.3 m)	832 or 1,089 lb. (377 or 494 kg)	60 hp (44.7 kW)	Cat. 1
SS1116P	17–47 ft (5.2–14.3 m)	1,737 lb. (787 kg)	60 hp (44.7 kW)	Cat. 1 and 2
SS1180P	17–47 ft (5.2–14.3 m)	2,387 lb. (1,083 kg)	60 hp (44.7 kW)	Cat. 1 and 2
SS1220P	17–47 ft (5.2–14.3 m)	2,778 lb. (1,260 kg)	60 hp (44.7 kW)	Cat. 1 and 2

Trailer Mover

The Frontier trailer mover features a heavy-duty design capable of lifting up to 3,000 pounds (1,360.8 kg). Easily move your bumper pull or gooseneck trailer.



- iMatch™ Quick Hitch compatible.
- Category 1 pins included.
- 2-in. Receiver Mount with safety chain slots.
- Includes 2½-in. ball hitch for gooseneck trailers.
- Rated for trailers up to 3,000 lb. (1,360.8 kg).
- Features a corrosion-resistant powder coating for long-lasting use.
- Bushings are sold separately.



Hay and Forage Equipment



Heavy-Duty Wheel Rake

Rake more hay in less time with the heavy-duty wheel rake. Large, wind-panel rake wheels gather hay faster so you can start baling sooner.



MODEL	RAKING WIDTH	WINDROW WIDTH	TRANSPORT WIDTH	# OF WHEELS
WR5417	16.5–29 ft (5.02–8.83 m)	24–72.3 in. (60.96–183.6 cm)	12.33 ft (3.75 m)	17 Wheels

High-Capacity Wheel Rakes

High-capacity wheel rakes give you the performance and consistency to engage nearly any type of terrain.



MODEL	RAKING WIDTH	WINDROW WIDTH	TRANSPORT WIDTH	# OF WHEELS
WR1212	24 ft (7.3 m) maximum	38–58 in. (96.5–147.3 cm)	8 ft (2.44 m)	12 Wheels
WR1214	28 ft (8.5 m) maximum	38–58 in. (96.5–147.3 cm)	8.1 ft (2.46 m)	14 Wheels
WR1216	32 ft (9.8 m) maximum	38–58 in. (96.5–147.3 cm)	8.1 ft (2.46 m)	16 Wheels



High-Capacity Carted Wheel Rakes

High-capacity carted wheel rakes provide fast raking speed without sacrificing performance to maximize hay quality and retain feed value.

MODEL	RAKING WIDTH	WINDROW WIDTH	TRANSPORT WIDTH	# OF WHEELS
WR3208	16 ft, 6 in.–17 ft, 8 in. (5–5.4 m)	4 ft, 5 in.–6 ft, 10 in. (1.3–2.1 m)	12 ft (3.66 m)	8 Wheels
WR3210	18 ft, 5 in.–21 ft (5.6–6.4 m)	3 ft, 3 in.–7 ft, 3 in. (1–2.2 m)	12 ft (3.66 m)	10 Wheels
WR3212	21 ft–24 ft, 4 in. (6.4–7.4 m)	2 ft, 10 in.–7 ft, 3 in. (0.9–2.2 m)	12 ft (3.66 m)	12 Wheels



Carted Wheel Rakes

Carted wheel rakes provide optimum maneuverability and extra down-pressure to adjust to land contours for tough raking jobs.

MODEL	RAKING WIDTH	WINDROW WIDTH	TRANSPORT WIDTH	# OF WHEELS
WR0008	17 ft, 8 in. (5.4 m)	24–51 in. (61 to 129.5 cm)	8 ft, 2 in. (2.49 m)	8 Wheels
WR0010	21 ft (6.4 m) maximum	24–51 in. (61 to 129.5 cm)	8 ft, 2 in. (2.49 m)	10 Wheels
WR0012	24 ft, 4 in. (7.4 m) maximum	24–51 in. (61 to 129.5 cm)	8 ft, 2 in. (2.49 m)	12 Wheels



Hay Tedders

Improve feed quality and dry-down time with a hay tedder. They provide thorough conditioning and even distribution in all types of hay.

MODEL	WORKING WIDTH	MINIMUM PTO HP	TRANSPORT WIDTH	# OF ROTORS
TD1316	16.16 ft (5 m)	20 hp (15 kW)	9.33 ft (2.85 m)	4
TD3418	18.16 ft (5.54 m)	35 hp (26.1 kW)	9.2 ft (2.79 m)	4
TD3427	26.5 ft (8.08 m)	55 hp (41 kW)	11.5 ft (3.51 m)	6

Bale Spears

Round or square, whatever the job, there is a Frontier bale spear up to the task. Choose from a wide range of single- and triple-tine models to move and stack bales quickly and easily.



MODEL	BALE QUANTITY / SIZE	BALE WEIGHT	LOADER SERIES / CARRIER / HITCH
AB11D	1 Large Round Bale	2,000 lb. (907.2 kg)	600 and 700 Series John Deere Quick-Attach Loaders
AB11E	1 Large Round Bale	2,000 lb. (907.2 kg)	300, 400, and 500 Series John Deere Quick-Attach Loaders
AB11G	1 Large Round Bale	2,000 lb. (907.2 kg)	500 and 600 Series Loaders with Global Carrier
AB12D	1 Large Round Bale or Square Bale	Round Bale: 2,500 lb. (1,134 kg) Square Bale: 2,000 lb. (907.2 kg)	600 and 700 Series John Deere Quick-Attach Loaders
AB12E	1 Large Round Bale or Square Bale	Round Bale: 2,500 lb. (1,134 kg) Square Bale: 2,000 lb. (907.2 kg)	300, 400, and 500 Series John Deere Quick-Attach Loaders
AB12G	1 Large Round Bale or Square Bale	Round Bale: 2,500 lb. (1,134 kg) Square Bale: 2,000 lb. (907.2 kg)	500 Series Loaders with Global Carrier
AB13D	1 Large Round Bale	2,500 lb. (1,134 kg)	600 and 700 Series John Deere Quick-Attach Loaders
AB13E	1 Large Round Bale	2,500 lb. (1,134 kg)	300, 400, and 500 Series John Deere Quick-Attach Loaders
AB13G	1 Large Round Bale	2,500 lb. (1,134 kg)	500 Series Loaders with Global Carrier
AB14G	2 Round Bales or 1 Square Bale	2 Round Bales: 2000 lb. (907.2 kg) each 1 Square Bale: 2500 lb. (1134 kg)	500 Series Loaders with Global Carrier
AB14K	2 Round Bales or 1 Square Bale	2 Round Bales: 2,000 lb. (907.2 kg) each 1 Square Bale: 2,500 lb. (1,134 kg)	600 and 700 Series Loaders with Global Cat. 2
HS2001	1 Large Round Bale	2,200 lb. (997.9 kg)	Cat. 1 and 2, 3-Point Hitch
HS2002	1 Large Round Bale or Square Bale	3,000 lb. (1,360.8 kg)	Cat. 2 and 3, 3-Point Hitch
HS2003	1 Large Round Bale or Square Bale	3,000 lb. (1,360.8 kg)	Cat. 2 and 3, 3-Point Hitch
HS2004	1 Large Round Bale or 2 Square Bale	4,000 lb. (1,814.4 kg)	Cat. 2 and 3, 3-Point Hitch

Round-Bale Huggers

Don't lose volume or nutritional value while moving large round bales. Treat regular or silage bales carefully using the gentle-grasping round-bale hugger.



MODEL	BALE CAPACITY	BALE DIAMETER	LOADER SERIES / CARRIER
AH11G	1 Wrapped Bale	3–6 ft (0.9–1.8 m)	500 and 600 Series Loaders / Global Carrier

Livestock and Equine Equipment



Sprayers

Frontier's 3-point-mounted sprayers are perfect for spraying pastures, fields, road ditches, fence rows, or specialty crops. Sizes to fit virtually all operations.

MODEL	WORKING WIDTH	TANK CAPACITY	OPERATING WEIGHT ¹	HITCH
LS2004	Boom: 10 ft (3 m) Boom: 12.5 ft (3.8 m) Boomless: 24 ft (7.3 m)	45 gal. (170 L)	496–513 lb. (225–232.7 kg)	Limited Cat 1 and Cat. 1 with quick-hitch
LS2006	Boom: 12.5 ft (3.8 m) Boom: 18 ft (5.5 m) Boomless: 24 ft (7.3 m)	60 gal. (227 L)	651–793 lb. (295.3–359.7 kg)	Cat. 1 with quick-hitch
LS2011	Boom: 18 ft (5.5 m) Boom: 24 ft (7.3 m) Boom: 30 ft (9.4 m) Boomless: 30 ft (9.4 m)	110 gal. (416 L)	1,229–1,450 lb. (557.5–657.7 kg)	Cat. 1 or 2 (with optional kit) with quick-hitch
LS2015	Boom: 18 ft (5.5 m) Boom: 24 ft (7.3 m) Boom: 30 ft (9.4 m) Boomless: 30 ft (9.4 m)	150 gal. (568 L)	1,585–1,806 lb. (718.9–819.2 kg)	Cat. 2 with quick-hitch

You, John Deere, and Frontier. Let's work together.

¹Weight estimated with water. Properly ballasted tractor required for lifting and operation. Weight also depends on configuration.

Manure Forks

Move manure or clean up hay with a Frontier manure fork.



MODEL	DESCRIPTION	LOADER SERIES / CARRIER
AM20F	50 in. (127 cm) Manure Fork	100 Series
AM20F	60 in. (152.4 cm) Manure Fork	100, 200, 300 Series

Chain-Unloading Manure Spreaders

Spreading manure is both cost-effective and efficient with a chain-unloading manure spreader. It spreads material evenly to help maximize nutrient value.



MODEL	HEAPED LEVEL CAPACITY	MINIMUM TRACTOR WEIGHT	DRIVE SYSTEM	HITCH
MS1102G	31.11 cu ft (0.88 m ³)	961 lb. (435.9 kg)	Ground driven	Pull-Type
MS1105G	62.22 cu ft (1.76 m ³)	2,176 lb. (987.0 kg)	Ground driven	Pull-Type
MS1108G	99.56 cu ft (2.82 m ³)	2,851 lb. (1,293.2 kg)	Ground driven	Pull-Type
MS1108	99.56 cu ft (2.82 m ³)	3,282 lb. (1,488.7 kg)	PTO driven	Pull-Type
MS1112	155.56 cu ft (4.40 m ³)	4,547 lb. (2,062.5 kg)	PTO driven	Pull-Type
MS1117	217.78 cu ft (6.17 m ³)	5,670 lb. (2,571.9 kg)	PTO driven	Pull-Type
MS1223	292.45 cu ft (8.28 m ³)	7,742 lb. (3,511.7 kg)	PTO driven	Pull-Type
MS1227	336 cu ft (9.51 m ³)	9,068 lb. (4,113.2 kg)	PTO driven	Pull-Type

Pro Finishers

Riding arena surfaces need to be free of debris and have low compaction to reduce impact and concussion on joints. Frontier Pro Finishers help ensure a consistent, safe, and healthy riding surface, whatever the riding discipline and requirements may be.



MODEL	OVERALL WIDTH	ENGINE HP	HITCH
PF5054	54 in. (137 cm)	18–35 hp (13.4–26.1 kW)	Cat. 1 Limited
PF5072	72 in. (183 cm)	35–50 hp (26.1–37.3 kW)	Cat. 1
PF5096	96 in. (244 cm)	40–90 hp (29.8–67.1 kW)	Cat. 1 and 2



Inline Bale Wrapper

Protect silage bales from harsh weather and preserve feed value with inline bale wrappers.

MODEL	BALE CAPACITY DIAMETER	WRAPPING CAPACITY
LW1166	5–6 ft (1.52–1.83 m) round	120 bales / hr



3-Point-Bale Unroller

Transport large round bales effortlessly with a 3-point-bale unroller. Use the hydraulic bale unroller to haul and unroll round bales for feeding.

MODEL	DESCRIPTION	BALE CAPACITY	HITCH
BU1060	3-Pt.-Bale Unroller	2,000 lb. (907.2 kg)	Cat. 1 and 2

FRONTIER

Quick Hitch



- Provides easy hookup for most Category 1 implements.
- Built with tubular, box-welded steel for longer life.
- Handles the increased lift capacity of today's high-performance tractors.
- Fits all 1-3E Series John Deere tractors.
- Designed to meet ASABE AD11001 Standard for Category 1 quick hitches.

Find this product and many more at Shop.Deere.com or Shop.Deere.ca



Snow Removal Equipment



3-Point Snow Blowers

Move snow out of the way so you can get on with your work with a powerful 3-point snow blower. These blowers are the ideal size for large-property and commercial operations, clearing yards, parking lots, driveways, and sidewalks with ease.



MODEL	WORKING WIDTH	PTO HP	HITCH	TYPE
SB1148	48 in. (121.9 cm)	16–35 hp (11.9–26.1 kW)	Cat. 1	Rear 3-Point Hitch
SB1154	54 in. (137.2 cm)	16–35 hp (11.9–26.1 kW)	Cat. 1	Rear 3-Point Hitch
SB1164	64 in. (162.6 cm)	20–50 hp (14.9–37.3 kW)	Cat. 1	Rear 3-Point Hitch
SB1164P	64 in. (162.6 cm)	20–50 hp (14.9–37.3 kW)	Cat. 1	Pull-Type
SB1174	74 in. (188.0 cm)	30–45 hp (22.4–33.5 kW)	Cat. 1 and 2	Rear 3-Point Hitch
SB1174P	74 in. (188.0 cm)	25–65 hp (18.6–48.5 kW)	Cat. 1 and 2	Pull-Type
SB1184	84 in. (213.4 cm)	40–80 hp (29.8–59.7 kW)	Cat. 1 and 2	Rear 3-Point Hitch
SB1194	94 in. (238.8 cm)	40–80 hp (29.8–59.7 kW)	Cat. 2	Rear 3-Point Hitch
SB1274	74 in. (188.0 cm)	35–80 hp (26.1–59.7 kW)	Cat. 1 and 2	Rear 3-Point Hitch
SB1280	80 in. (203.2 cm)	35–80 hp (26.1–59.7 kW)	Cat. 1 and 2	Rear 3-Point Hitch
SB1388	88 in. (223.5 cm)	55–85 hp (41–63.4 kW)	Cat. 2	Rear 3-Point Hitch
SB1388R	88 in. (223.5 cm)	55–85 hp (41–63.4 kW)	Cat. 2	Rear 3-Point Hitch
SB1392R	92 in. (233.7 cm)	75–125 hp (55.9–93.2 kW)	Cat. 2 and 3	Rear 3-Point Hitch
SB1308R	98 in. (248.9 cm)	100–150 hp (74.6–111.9 kW)	Cat. 2 and 3	Rear 3-Point Hitch
SB1309R	104 in. (264.2 cm)	100–150 hp (74.6–111.9 kW)	Cat. 2 and 3	Rear 3-Point Hitch

You, John Deere, and Frontier. Let's work together.



Front-Mounted Snow Blowers

Power through deep snowdrifts with front-mount snow blowers. Front-mounting provides greater visibility and reduces repetitive movements.

MODEL	WORKING WIDTH	ENGINE HP	MOUNT TYPE
SB2164 ¹	64 in. (163 cm)	25–36 hp (18.6–26.8 kW)	Loader Mount
SB2176 ²	76 in. (193 cm)	35–56 hp (26.1–41.8 kW)	Loader Mount
SB1280F	80 in. (203.2 cm)	40–75 hp (29.8–55.9 kW)	Subframe Mount



Snow Pushes

The snow push is a fast, simple option for moving snow away from buildings, fences, and hard-to-reach areas.

MODEL	WORKING WIDTH	LOADER SERIES
AS10F	48 or 60 in. (121.9 or 152.4 cm)	48 in.: 100 and 200 Series John Deere Quick-Attach Loaders 60 in.: 100, 200, and 300 Series John Deere Quick-Attach Loaders
AS10H-6	73.75 in. (187.3 cm)	300 and 400 Series John Deere Quick-Attach Loaders
AS10H-7	85.75 in. (217.8 cm)	300 and 400 Series John Deere Quick-Attach Loaders
AS10H-8	97.75 in. (248.3 cm)	300 and 400 Series John Deere Quick-Attach Loaders
AS11E-8	98 in. (248.9 cm)	300, 400, and 500 Series John Deere Quick-Attach Loaders
AS11E-8	110 in. (279.4 cm)	300, 400, and 500 Series John Deere Quick-Attach Loaders
AS11E-10	119 in. (303.5 cm)	300, 400, and 500 Series John Deere Quick-Attach Loaders



¹The SB2164 Front-Mount Snow Blower uses the HP2025 Hydraulic Power Pack.
²The SB2176 Front-Mount Snow Blower uses the HP2134 Hydraulic Power Pack.

Front Blades

For small snow removal chores, front blades are a dependable solution. Curved blade edges roll snow rather than pushing it for smooth, easy moving.



MODEL	WORKING WIDTH	LOADER SERIES
AF10F	60 in. (152.4 cm)	100 and 200 Series John Deere Quick-Attach Loaders
AF11E	72 or 84 in. (182.9 or 213.4 cm)	300, 400, and 500 Series John Deere Quick-Attach Loaders
AF11G	84 or 96 in. (213.4 or 243.8 cm)	500 and 600 Series Loaders with Global Carrier
AF12D	108 in. (274.3 cm)	600 and 700 Series John Deere Quick-Attach Loaders
AF12G	96, 108, or 120 in. (243.8, 274.3, or 304.8 cm)	500 and 600 Series Loaders with Global Carrier

Tractor-Mounted Front Blade

Clear snow obstacles with this reversed blade, which mounts directly to the tractor frame. With hydraulic width adjustment up to 10 feet (3 meters), our expandable front snow blade also features durable, cold-resistant hydraulic hoses.



MODEL	WORKING WIDTH	TRACTOR HP	MOUNT TYPE
AF13E	77 in. (195.6 cm) minimum 125 in. (317.5 cm) maximum	45–75 hp (33.5–55.9 kW)	Tractor Subframe Mount

You, John Deere, and Frontier. Let's work together.

Material Handling Equipment



Pallet Forks

Don't let heavy objects weigh down your workday. With Frontier pallet forks, you can lift pallets, load lumber, move bulky material, or clear construction sites quickly and efficiently.

MODEL	DESCRIPTION	TINE CAPACITY	LOADER SERIES / CARRIER
AP10F	36 in. (91.4 cm) Fixed-Tine Pallet Fork	900 lb. (408.2 kg)	100 Series John Deere Quick-Attach Loaders
AP10F	42 in. (106.7 cm) Fixed-Tine Pallet Fork	2,000 lb. (907.2 kg)	100 Series John Deere Quick-Attach Loaders
AP11F	42 in. (106.7 cm) Fixed-Tine Pallet Fork	2,000 lb. (907.2 kg)	100, 200, and 300 Series John Deere Quick-Attach Loaders
AP12D	42 or 48 in. (106.7 or 121.9 cm) Fixed-Tine Pallet Fork	5,500 lb. (2,494.8 kg)	600 and 700 Series Quick-Attach Loaders
AP12F	42 or 48 in. (106.7 or 121.9 cm) Fixed-Tine Pallet Fork	3,750 lb. (1,701 kg)	200, 300, 400, and 500 Series John Deere Quick-Attach Loaders
AP12G	42 or 48 in. (106.7 or 121.9 cm) Fixed-Tine Pallet Fork	5,500 lb. (2,494.8 kg)	500 and 600 Series Loaders with Global Carrier
AP12K	48 in. (121.9 cm) Fixed-Tine Pallet Fork	10,000 lb. (4,535.9 kg)	Global Carrier–Cat. 2
AP13D	42 or 48 in. (106.7 or 121.9 cm) Floating Pallet Fork	5,500 lb. (2,494.8 kg)	600 and 700 Series John Deere Quick Attach Loaders
AP13F	42 or 48 in. (106.7 or 121.9 cm) Floating Pallet Fork	3,750 lb. (1,701 kg)	200, 300, 400, and 500 Series John Deere Quick-Attach Loaders
AP13G	42 or 48 in. (106.7 or 121.9 cm) Floating Pallet Fork	5,500 lb. (2,494.8 kg)	500 and 600 Series Loaders with Global Carrier

Mechanical Grapple

The mechanical grapple was designed to meet the needs of those rural lifestyle customers that want a loader grapple, but don't have loader third function capabilities.



MODEL	WORKING WIDTH	LIFT CAPACITY	LOADER COMPATIBILITY
MG20F	54 in. (137.2 cm)	1,200 lb. (544.3 kg)	120R, 220R, 300E

Pallet Fork Grapples¹

A great tool for moving lots of materials that are awkward to handle. From piles of brush to firewood to lengths of pipe and more, a pallet fork grapple can help make work simpler and easier.



MODEL	PALLET FORK COMPATIBILITY
PG11	AP10F and AP11F Series
PG12	AP11G, AP12F, and AP12G Series

Root Grapples¹

Get rid of unwanted brush, rocks, logs, and other debris with a root grapple. It's the perfect tool for storm cleanup or clearing land of rubble and debris.



MODEL	WORKING WIDTH	LOADER SERIES / CARRIER
AV20F	53 in. (134.6 cm)	100, 200, and 300 Series John Deere Quick-Attach Loaders
AV20H	60 in. (152.4 cm)	300R and 320R John Deere Quick-Attach Loaders only
AV20E	62 in. (157.5 cm)	400 and 500 Series John Deere Quick-Attach Loaders
AV20G	77 in. (195.6 cm)	500 and 600 Series Loaders with Global Carrier
AV55H	64 in. (162.6 cm)	300 Series John Deere Quick-Attach Loaders
AV56E	72 in. (183 cm)	400 Series John Deere Quick-Attach Loaders
AV56G	72 in. (183 cm)	500 and 600 Series Loaders with Global Carrier
AV57G	84 in. (213.4 cm)	500 and 600 Series Loaders with Global Carrier

¹Loader third function hydraulics required.



Debris Grapples¹

Grounds maintenance workers and demolition crews can clean up worksites quickly and efficiently with a powerful debris grapple. The rugged construction enables operators to clutch heavy or bulky items more easily.

MODEL	WORKING WIDTH	LOADER SERIES / CARRIER
AD11H	60 in. (152.4 cm)	320R and 400 Series John Deere Quick-Attach Loaders
AD11E	72 in. (182.9 cm)	320R, 400, and 500 Series John Deere Quick-Attach Loaders
AD12G	76 in. (193.0 cm)	500 and 600 Series Loaders with Global Carrier



Rock Buckets

Clear your land of rocks while leaving the soil in place with a rock bucket. They sift out soil while picking up heavy rocks or large debris.

MODEL	WORKING WIDTH	LOADER SERIES / CARRIER
AR10H	55 in. (138.7 cm)	300 and 400 Series John Deere Quick-Attach Loaders
AR10E	66 in. (167.6 cm)	300, 400, and 500 Series John Deere Quick-Attach Loaders
AR10E	75 in. (190.5 cm)	300, 400, and 500 Series John Deere Quick-Attach Loaders
AR10G	75 in. (190.5 cm)	500 and 600 Series Loaders with Global Carrier



¹Loader third function hydraulics required.

4-in-1 Buckets¹

Move loose material, clear logs and debris, or grade and smooth driveways with the versatile 4-in-1 bucket. Heavy-duty steel hinges resist bending, providing long wear life, and the sturdy bucket clamp seals shut to secure material during transport.



MODEL	WORKING WIDTH	LOADER SERIES / CARRIER
AY11F	53 in. (134.6 cm)	100 and 200 Series, and 300E John Deere Quick-Attach Loaders
AY11H	60 in. (152.4 cm)	320R and 400 Series John Deere Quick-Attach Loaders
AY11E	72 in. (182.8 cm)	320R, 400, and 500 Series John Deere Quick-Attach Loaders
AY12G	72, 78, or 84 in. (182.9, 198.1, or 213.4 cm)	500 and 600 Series Loaders with Global Carrier

Loader Carrier Adapters

Want to upgrade to a John Deere compact tractor but have attachments with different mounting styles? Frontier loader carrier adapters make it easy to connect and get to work—no matter what you've got.



MODEL	LIFT CAPACITY	LOADER SERIES / CARRIER
SA20F	1,500 lb. (680.4 kg)	100 and 200 Series, and 300E John Deere Quick-Attach Loaders to Skid Steer Carrier
SA21E	4,000 lb. (1,814.4 kg)	300R, 320R, and 400 and 500 Series John Deere Quick-Attach Loaders to Skid Steer Carrier
SA21G	4,000 lb. (1,814.4 kg)	500 and 600 Series Loaders with Global Carrier to Skid Steer Carrier
SA22D	4,000 lb. (1,814.4 kg)	600 and 700 Series John Deere Quick-Attach Loaders to Skid Steer Carrier
DA21G	4,000 lb. (1,814.4 kg)	500 and 600 Series Loaders with Global Carrier to John Deere Quick-Attach Carrier
GA21E	4,000 lb. (1,814.4 kg)	440R and 500 Series Quick-Attach Loaders to Global Carrier
GA22D	5,000 lb. (2,268 kg)	600 and 700 Series Quick-Attach Loaders to John Deere Quick-Attach Carrier

You, John Deere, and Frontier. Let's work together.

¹Loader third function hydraulics required.



Loader-Mount Rotary Brooms

Sweep walks, driveways, parking lots, and other paved areas with a loader-mount rotary broom. These brooms can save valuable time in commercial applications.

MODEL	WORKING WIDTH	LOADER SERIES / CARRIER
SW2160	60 in. (152.4 cm)	300R and 320R John Deere Quick-Attach Loaders
SW2172	72 in. (182.9 cm)	300R, 320R, and 400 Series John Deere Quick-Attach Loaders
SW2184	84 in. (213.4 cm)	400 Series John Deere Quick-Attach Loaders



Hydraulic Power Packs

A Frontier hydraulic power pack powers several loader-mount implements to remove snow, dirt, and debris, or take on other tough challenges.

MODEL	HYDRAULIC CAPACITY	PTO HP
HP2025	16 gpm at 2700 psi (60.6 L/min. at 18,615 kPa)	25–35 hp (18.6–26.1 kW)
HP2134	20 gpm at 3000 psi (75.7 L/min. at 20,684 kPa)	35–56 hp (26.1–41.8 kW)



TIPS NOTEBOOK

Like an expert in your pocket.

At home or in the field, find our ever-growing collection of more than 100 tips, videos, and collective wisdom about how to get all kinds of jobs done around your place. Brought to you by John Deere and Frontier.

We're in this together.

For more videos and tips, go to tipsnotebook.deere.com

Send your project idea to Tipldea@JohnDeere.com.
The world will be better for it.



tipsnotebook.deere.com





BuyFrontier.com
BuyFrontier.co

7458100
(26/03)

FRONTIER

FRONTIER™ |