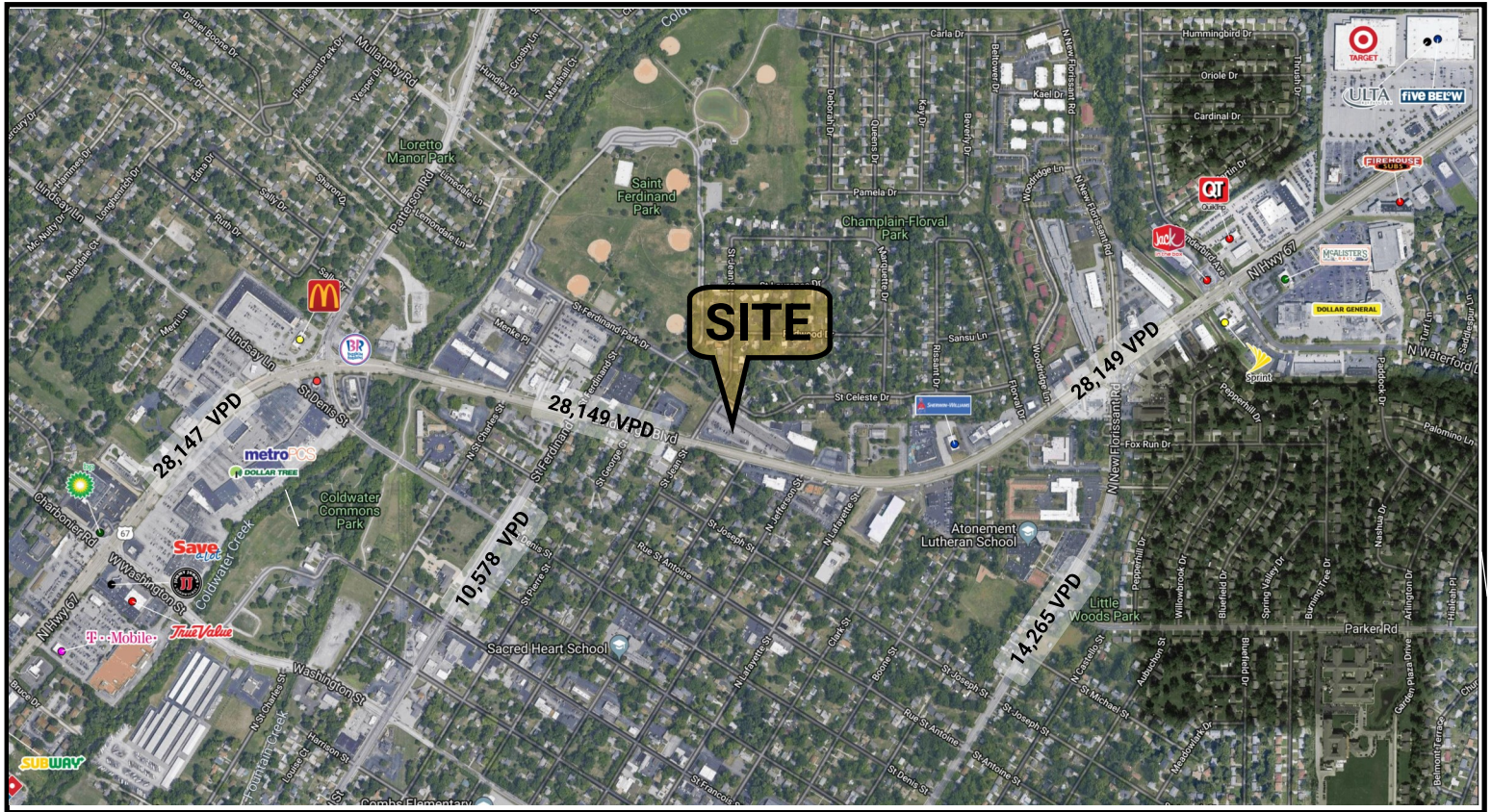




RALLO PLAZA

1101 –1149 N HWY 67, FLORISSANT, MO



CURRENT TENANTS



For information, please contact:

Gary Grewe

314-795-8899 | Gary@rsolution.com

Dominic Barlow

314-277-6456 | dbarlow@rsolution.com

9109 Watson Road, 4th Floor | St. Louis, MO 63126 | www.rsolution.com



RALLO PLAZA

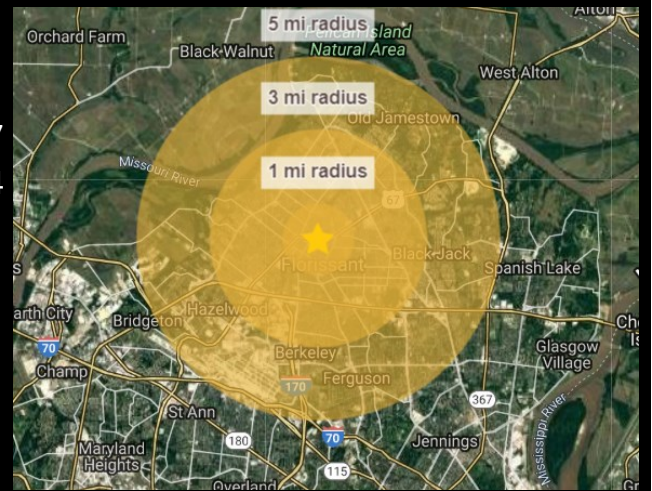
1101–1149 N Hwy 67, FLORISSANT, MO

AREA DEMOGRAPHICS

	<u>1 mi</u>	<u>3 mi</u>	<u>5 mi</u>
Population	13,526	103,730	172,627
Median HH Income	\$58,975	\$62,365	\$59,394
Employees	5,208	29,907	57,636

AVERAGE DAILY TRAFFIC

N HWY 67	28,149 VPD
ST. FERDINAND	10,578 VPD

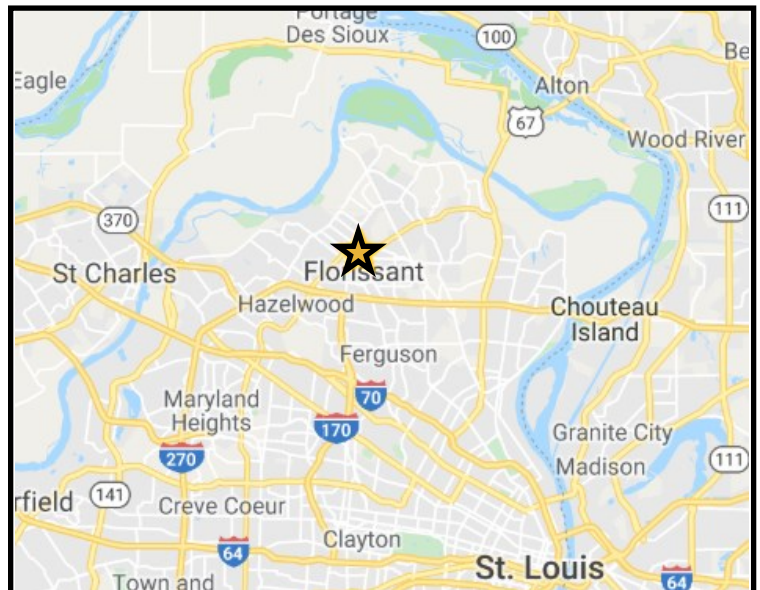


Settled in the late 1700s, Florissant (originally “Fleurissant”, meaning “blooming” in English) was a typical French village of the time. Located just outside of Saint Louis, Florissant was ranked in the top 100 Best Places to Live by Money Magazine in 2012.

Florissant is a second-ring northern suburb of Saint Louis, and is the thirteenth-largest city in Missouri. Florissant has four high schools—McCluer North High School, McCluer High School, North Technical High School, and Hazelwood Central High School. Hazelwood Northwest Middle School along with several elementary schools are within the limits as well. Saint Louis Community College-Florissant Valley and University of Missouri-Saint Louis are the two colleges close to Florissant. The Saint Louis County Library operates its Florissant Valley Branch in Florissant. Northwest Healthcare, an outpatient subsidiary of Christian Hospital, as well as a satellite facility of the Alvin J Siteman Cancer Center, are both located within Florissant.

PROPERTY HIGHLIGHTS

- 25,000 sq. ft. retail center with a 4,000 square feet available.
- Located in the middle of the bustle of Florissant’s retail corridor
- Great visibility and access
- Surrounding retailers in the area include; Target, Walmart, Home Depot, Chick-fil-A, Raising Cane’s, Aldi, Dierbergs.



For information, please contact:

Gary Grewe
314-795-8899 | Gary@rsolution.com

Dominic Barlow
314-277-6456 | dbarlow@rsolution.com

9109 Watson Road, 4th Floor | St. Louis, MO 63126 | www.rsolution.com



CURRENT TENANTS

Enterprise Leasing	2,975 SF	Al-Ameir Market	2,000 SF
Nettie Kelly Cosmetics	1,500 SF	C&C Repair	1,000 SF
Doughnut Cupboard	1,525 SF	La Foix Luxe	1,000 SF
Vivian Richard Realty	1,000 SF	Phillips Studios	750 SF
April Nails	4,000 SF	Travel Link	750 SF
Available	4,000 SF	C&C Repair	2,500 SF
County Accounting/Tax Service	2,000 SF		

For information, please contact:

Gary Grewe
314-795-8899 | Gary@rsolution.com

Dominic Barlow
314-277-6456 | dbarlow@rsolution.com

9109 Watson Road, 4th Floor | St. Louis, MO 63126 | www.rsolution.com