

# General Price List

August 1st, 2025



## Sensible Choice Cremation

**Office:** 2 Stalwart Industrial Drive, Gormley, Ontario L0H 1G0

**Holding Facility:** 8911 Woodbine Avenue, Markham, Ontario L3R 5G1



[www.sensiblechoice.ca](http://www.sensiblechoice.ca)



[info@sensiblechoice.ca](mailto:info@sensiblechoice.ca)



647-984-5158

**Managing Funeral Director:** Sagen Pearse License # FD1-301350

**Transfer Service Operator Class 1 License #** TS1-0014626

**Licensed Operator:** North Toronto Crematorium INC.

Licensed by the

**BAO** | Bereavement  
Authority of  
Ontario

**Unless otherwise specified, prices shown  
do NOT include applicable HST.**

### **Minimum Services**

The Minimum Services charge represents the minimum non-declinable services required to facilitate the disposition of a deceased person, whether by cremation or burial.

This minimum service charge is applicable to every family we serve and includes transferring the deceased from the place of death (or Coroner's Office, hospital, airport, etc.) to our holding room, where the deceased will be placed in a casket of your choosing and securely held until the necessary documentation is completed for burial, cremation or hydrolysis, as applicable. Once the required documentation is ready (i.e., death has been registered and if applicable, the coroner's certificate for cremation / hydrolysis has been obtained), the deceased is transported in a service van or coach to the cemetery, crematorium, or hydrolysis facility at the earliest practicable opportunity or at a scheduled time, as applicable.

Additional fees may apply for mileage beyond 40 km, pacemaker/radioactive implant removal and pallbearers (burial only).

### **What is NOT included in the above Minimum Services charge:**

- any supplies, such as a casket, outer burial container, urn, etc.
- any additional services that may be selected, such as pallbearers for interment
- additional mileage fees beyond 40 km
- pacemaker / radioactive implant removal, if applicable
- applicable taxes (HST)
- disbursements to be paid to third parties on your behalf, such as the cemetery interment fee, crematorium fee, coroner's fee, death registration fee, etc.

## MINIMUM SERVICES ITEMIZED PACKAGE COSTS

Professional and staff services .....	\$ 200
Documentation .....	\$ 50
Minimum preparation of remains .....	\$100
Facilities for preparation/shelter.....	\$ 100
Initial transfer of remains from Hospital.....	\$ 200
Administration vehicle.....	\$ 50
Final transfer of remains .....	\$ 200
<b>Total of itemized services .....</b>	<b>\$ 900</b>

## Additional/Optional Services

Additional Staff for Hospice, House-Call, or Coroner's Office...	\$200
Staff for Witnessed Cremation.....	\$400
After Operating Hours Transfer Fee (Outside Mon-Fri 9-5).....	\$400
Dressing.....	\$100
Pacemaker removal.....	\$ 50
Setting Features.....	\$ 50
Bathing, Dressing and setting features.....	\$150
Using a funeral coach (hearse).....	\$ 400
Additional mileage .....	\$1.75
Refundable Deposit for Cremated Remains.....	\$300
Scattering of Cremated Remains.....	\$200
Staff for Graveside (Cremated Remains).....	\$250
Staff for Graveside (Casket Burial).....	\$600
Delivery of Cremated Remains.....	\$ 50
Cremation Fee at North Toronto Crematorium.....	\$695

## North Toronto Crematorium Optional Services

Witnessing of cremation 30 Minutes in Chapel.....	\$ 295
24 Hour Return of cremated remains.....	\$ 295
48 Hour Return of cremated remains.....	\$ 195

## DISBURSEMENTS

**Cremation fee** .....\$ varies

If using another crematorium besides North Toronto Crematorium the cremation cost will be added onto the contract at their rate.

**Coroner's fee** .....\$75

This is a provincially set fee charged by the coroner for issuing a certificate that allows cremation or alternative disposition or 'Out of Province' shipping to take place.

**Interment fee** .....\$ varies

This fee is charged by the cemetery for the opening and closing of the grave. The fee varies by cemetery and by the size and depth of the grave.

**Municipal death registration fee** .....\$ 45

This is a fee charged by the local municipality to register the death on behalf of the Province of Ontario. The municipality issues a burial permit, then forwards the registration documents to the Office of the Registrar General in Thunder Bay.

**Bereavement Authority of Ontario Fee** .....\$ 30

The Bereavement Authority of Ontario (BAO) Consumer Protection Fee is a fee charged to licensed bereavement businesses and professionals to fund the BAO's regulatory and consumer protection activities.

**Media notices** .....\$ varies

These are charges for death notices in newspapers, radio stations or other media outlets.

## Sensible Choice Cremation Package

**\$1,525.00**

### ITEMIZED PACKAGE COSTS

Professional and staff services .....	\$200
Documentation .....	\$50
Minimum preparation of remains .....	\$100
Facilities for preparation/shelter.....	\$100
Initial transfer of remains from hospital .....	\$200
Administration vehicle.....	\$50
Final transfer of remains .....	\$200
Cremation Fee at North Toronto Crematorium.....	\$695
<b>Total of itemized services .....</b>	<b>\$1595</b>

### MERCHANDISE

Vanderwagen VA-101 Cremation Container.....	\$250
Temporary Cardboard Container for cremated remains....	N/C

### DISBURSEMENTS

Coroner's Cremation Certificate HST included.....	\$75
Municipal Death Registration Fee HST included.....	\$45
Bereavement Authority of Ontario Fee HST included.....	\$30
<b>Total for Disbursements.....</b>	<b>\$845.00</b>

### TOTALS AND TAX

Taxable Amount.....	\$1845.00
HST.....	\$239.85
Total with HST.....	\$2084.85
Sensible Choice Cremation Discount.....	(\$559.85)
<b>Total for Complete Package.....</b>	<b>\$1525.00</b>

## Casket/Cremation Container Selection



### THE DRYDEN

SELECT HARDWOODS AND  
VENEER CONSTRUCTION  
ROSETAN CREPE INTERIOR  
CHERRY STAIN FINISH  
OPTIONAL LIFE SYMBOL  
CORNERS

BATESVILLE #274158

**\$2,980**



### THE DOMINION CEREMONIAL

(RENTAL CASKET FOR CREMATION ONLY)

SOLID SILVER MAPLE  
MAHOGANY TITIAN FINISH  
TAN CREPE INTERIOR  
WOOD BAR HANDLES  
INCLUDES PINE INTERIOR &  
INTERIOR

VICTORIAVILLE # WL220-00007

**\$2,190**





## THE GREY DOESKIN

EMBOSSSED VICUNA CLOTH  
COVERED PARTICLE BOARD  
WITH SWELL TOP  
WHITE CREPE INTERIOR  
METAL BAR HANDLES

**BATESVILLE** # 147970

**\$1,690**



## THE EDEN ENVIRO

UNFINISHED POPLAR  
COTTON WEAVE HANDLES  
WHITE CREPE LINING

**NORTHERN** # 102

**\$1,190**

## Cremation Only Containers



### CHAISE VIEWER & INSERT

CUSTOM HARDWOOD EXTERIOR  
WOOD BAR HANDLES  
CREMATION INSERT  
INCLUDES 1/2 HOUR  
PRIVATE FAMILY VIEWING  
**NORTHERN # SM900**

**\$675**



### PARTICLEBOARD CREMATION CONTAINER

PARTICLE BOARD CONSTRUCTION  
ROPE HANDLES, NO INTERIOR  
SUITABLE FOR  
IMMEDIATE CREMATION  
**NORTHERN # 10**

**\$590**



### Vanderwagen VA-101

PARTICLE BOARD CREMATION  
CONTAINER BASE  
CARDBOARD LID  
FABRIC STRAP HANDLES  
FOR IMMEDIATE  
CREMATION ONLY

**VA-101**

**\$250**

## Bronze and Sheet Metal Urns

### The Aristocrat

Batesville: 100199  
H 11"  
L 7.75"  
W 7.75"  
-Solid bronze  
-Limited to text only

**\$1,795** (E)



### The Milan

Batesville: 100059  
H 10.25"  
L 6.13"  
W 6.13"  
-Solid bronze

**\$1,295** (E)



### Bronze Vertical

Batesville: 235554  
H 9.06"  
L 8.50"  
W 4.44"  
-64 oz Sheet Bronze  
-Life Symbol Accent

**\$795** (E)



### Bronze Horizontal

Batesville: 100199  
H 6.06"  
L 7"  
W 6.69"  
-Sheet Bronze  
-Life Symbol

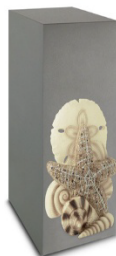
**\$795** (E)



### Pewter Bronze Vertical

Batesville: 235556  
H 9.06"  
L 8.50"  
W 4.44"  
-Sheet Bronze  
-Life Symbol

**\$795** (E)



### Pewter Bronze Horizontal

Batesville: 100199  
H 6.06"  
L 7"  
W 6.69"  
-Sheet Bronze  
-Life Symbol

**\$795** (E)



## Metal Urns

### Delphia Wings

Batesville: 235716  
H 9.75"  
L 6.69"  
W 6.69"  
-Cast in Brass

**\$595** (E)



### Flying Doves

Commemorate:  
A572  
H 9.5"  
D 7"  
-Cast in Aluminum

**\$450**



### Royal Plum

Batesville: 282818  
H 11  
D 7"  
-Cast in Metal Alloy

**\$550** (E)



### Starlight Pearl

Batesville: 282828  
H 9"  
D 6.5"  
-Cast in Brass

**\$495**



### Ashen Pewter

Batesville: 205396  
H 9.75"  
L 6.88"  
W 6.88"  
-Cast in Brass

**\$450** (E)



## Cloisonne Urns

### Larkspur

Wilbert:  
PW28000212-C  
H 9"  
D 8"  
-Cast in Copper



**\$795**

### Cameo Rose

Wilbert:  
P2010-C  
H 9"  
D 8"  
-Cast in Copper



**\$795**

### Autumn Leaves

Wilbert:  
P2009-C  
H 11"  
D 7"  
-Cast in Copper



**\$795**

### Blue Cloisonne

Wilbert:  
Pw28000212-C  
H 9"  
D 8"  
-Cast in Copper



**\$795**

### Lilac Cloisonne

Wilbert:  
Pw2800211  
H 9"  
D 8"  
-Cast in Copper



**\$795**

### Red Rosette

Batesville: 270113  
H 10.25"  
L 6.13"  
W 6.13"  
-Cast in Copper



**\$795**

## Unique Urns

### Walker

Batesville: 264754  
H 6"  
L 11"  
W 11"  
-Select Hardwood  
-LifeSymbol  
or Display Medallions available



**\$995 (E)**

### Nantucket

Batesville:  
282769  
H 11.5"  
L 7.75"  
W 6"  
-Select Hardwoods



**\$795 (E)**

### Whittaker

Batesville  
255708  
H 5"  
D 8"  
W 10.75"  
-Maple Solids  
-LifeSymbol or  
Display Medallion available



**\$695 (E)**

### Bennington

Batesville:  
272045  
H 6.5"  
L 6.5"  
W 9.13"  
-Distressed Wood



**\$595 (E)**

### Oak Mantel Clock

Batesville: 232364  
H 12"  
L 7.5"  
W 10.25"  
-Solid Oak



**\$1,295 (E)**

### Versatile Urn

Begin Urns VC  
H 8.5"  
W 4.75"  
L 7"  
-Custom aluminum



**\$595 (E)**

## Marble Urns

### White Pearl

Sentiments:

1104  
H 10.5"  
D 8"  
-White marble  
-Soft grey accents



**\$595**

### Onyx Green

Sentiments:

1113  
H 10.5"  
D 8"  
-Green marble  
-Mixed colours



**\$595**

### Cloud Grey

Sentiments:

1106  
H 10.5"  
D 8"  
-White marble  
-Mixed grey colours



**\$595**

### Green Marble

Sun Li  
017

H 8.4  
D 6.5"  
-Green jade  
coloured marble



**\$495**

### White Marble

Lee & G  
094

H 8.4"  
D 6.5"  
-White marble



**\$495**

### Navy Marble

Batesville: 238320

H 6.38"  
L 6.75"  
W 9.69"  
-Blue marble



**\$495** (E)

## Wood Urns

### Fredricksburg

Batesville: 100107

H 9.5"  
L 8.75"  
W 8.75"  
-Solid Cherry



**\$1,395** (E)

### Solaris

Batesville: 272094

H 10.25"  
L 6.13"  
W 6.13"  
-Select Hardwood



**\$695** (E)

### Bradbury

Batesville: 208692

H 8.5"  
W 11.44"  
L 10.63"  
-Solid Pecan  
-Life Symbol



**\$495** (E)

### Walnut Memento

Batesville: 148351

H 6"  
W 10.38"  
L 8.13"  
-Solid Walnut



**\$695** (E)

### Wolton Distressed

Batesville: 270049

H 6"  
w 8"  
L 11"  
-Distressed engineered  
wood construction



**\$550** (E)

### Braxton Maple

Batesville: 255706

H 6.70"  
W 9.25"  
L 6.88"  
-Engineered  
wood construction



**\$295** (E)

## Wood Urns

### Classic Jewel Box Mahogany

Victoriaville:  
US101-00233  
W 11"  
L 8"  
H 5.5"  
-Solid Mahogany



**\$595** (E)

### Classic Jewel Box Oak

Victoriaville:  
US110-00253  
W 11"  
L 8"  
H 5.5"  
-Solid Oak



**\$595** (E)

### Circle of Life

NorthUrn:  
NU211  
H 6.5"  
L 10"  
W 6"  
-Cherry stained poplar



**\$450** (E)

### Raised Panel

NorthUrn:  
NU209C  
H 7"  
L 11.6"  
W 7"  
-Maple stained poplar



**\$495** (E)

### Standard Plain

NorthUrn:  
NU201  
H 9"  
L 6.5"  
W 6.5"  
-Poplar construction



**\$295** (E)

### Ember Urn

NorthUrn:  
NU201E  
H 9"  
L 6.5"  
W 6.5"  
-Poplar construction



**\$295** (E)

## Enviro Urns

### Butterfly Reflections

Batesville: 252359  
H 5"  
L 9"  
W 6"  
-Pressed cotton



**\$295**

### Spiritual Reflections

Batesville:  
240070  
H 4.5"  
W 21.25"  
L 21.25"  
-Pressed cotton



**\$625**

### Spiritual Reflections

Batesville:  
240070  
H 4.5"  
W 21.25"  
L 21.25"  
-Pressed cotton



**\$625**

### Scattering Tubes \$150



19" Hole  
PI-NH



Sunflowers  
PI-SF



Rainbow Pond  
PI-RP



Ocean Sunset  
PI-OS



Bluebell  
PI-BF



Dove  
PI-ADM

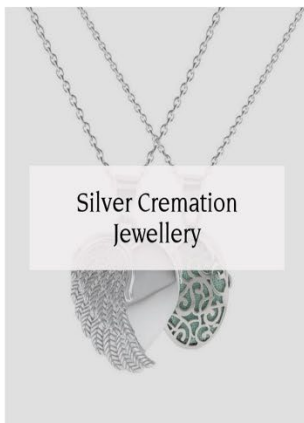
Passages International

H 12.6" x D 5" Cardboard

# loved remembered™



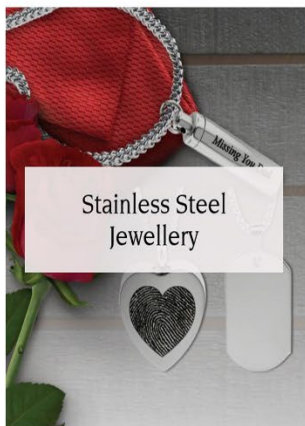
Gold Cremation  
Jewellery



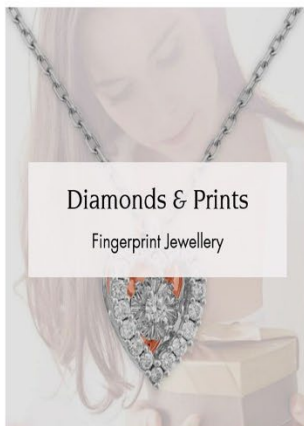
Silver Cremation  
Jewellery



Murano Glass  
Pendant Urns



Stainless Steel  
Jewellery



Diamonds & Prints  
Fingerprint Jewellery



Mini Keepsake Urns

**Full product line and pricing**



[www.lovedremembered.com](http://www.lovedremembered.com)

## Glossary of Terms

**Professional and staff services:** Coordination, arrangements, and guidance.

**Documentation:** Completion of legal forms and permits.

**Minimum preparation of remains:** Basic care for safe handling.

**Facilities for shelter:** Use of prep room and refrigerated sheltering.

**Initial transfer from hospital:** Transport to our holding facility

**Administration vehicle:** Vehicle used for errands and document delivery.

**Final transfer of remains:** Transport to crematorium

**Additional staff for transfer:** Additional staff member to assist with transfer

**Witnessed cremation staff:** Team present for cremation witnessing

**After-hours transfer fee:** Evening, weekend, or holiday transfers.

**Dressing:** Dressing the deceased in selected clothing.

**Pacemaker removal:** Required prior to cremation.

**Setting features:** Closing eyes and mouth gently.

**Bathing, dressing, and features:** Full preparation with care.

**Funeral coach (hearse):** Formal vehicle for final transport.

**Additional mileage:** Travel beyond local area.

**Refundable urn deposit:** Held until remains are picked up.

**Scattering of cremated remains:** Performed by staff as requested.

**Graveside staff (cremation):** Staff support for urn burial.

**Graveside staff (casket):** Staff for casket interment service.

**Delivery of cremated remains:** Personal delivery to family.

## **PAYMENT, FINANCING & FUNDING**

### **For services at time of death:**

Payment is due upon signing the contract.

Any balance remaining after this date will incur interest at a rate of **1.5% per month**, which is equivalent to **18% per annum (APR)**.

We accept payment by **E-Transfer, cash, cheque, debit, Visa, and Mastercard**

Financial assistance for burial and cremation is available through various governmental agencies, to those who qualify.

## **Owned & Operated by**

North Toronto Crematorium INC.  
2 Stalwart Drive, Gormley, Ontario L0H 1G0