

# BK CIVIL GROUP

CAPABILITY STATEMENT



MINING & CIVIL CONSTRUCTION | PLANT HIRE | TRANSPORT | AGRICULTURE





# OUR CAPABILITIES

Plant and Truck Hire

Tailings Storage Facility  
Construction

Feedlot Construction

Bulk Earthworks

Road & Rail



Roadworks R2

Bridgeworks B1

Financial F2





## OUR STORY


**We value our team and one of the major contributing factors to our growth has been the people we have in the business.**

BK Civil Group is a family-owned company based near Toowoomba in Queensland. We have a team of more than 120 personnel and our fleet size exceeds 300 pieces of plant. The strength of our business has been made possible by employing experienced professionals, investing in quality, dependable equipment and embracing the latest technologies. We value the communities in which we live and work and continue to generously donate to many events, sports teams and local initiatives.

We've completed projects in Mining & Resources, Oil and Gas, Agriculture, Road, Rail, Local and State government. We approach our work by communicating openly with our clients and collaborating to ensure projects are completed to the required specifications and within agreed timelines.







"We work with our  
clients and provide  
value for money  
solutions."

Bladen Binney  
Managing Director

# OUR VALUES

## ONE TEAM

We work as a united team and collaborate with our clients to achieve the best possible outcomes.

## DELIVER EXCELLENCE

We strive to deliver excellence in every project regardless of its size or complexity.

## ACCOUNTABLE ACTIONS

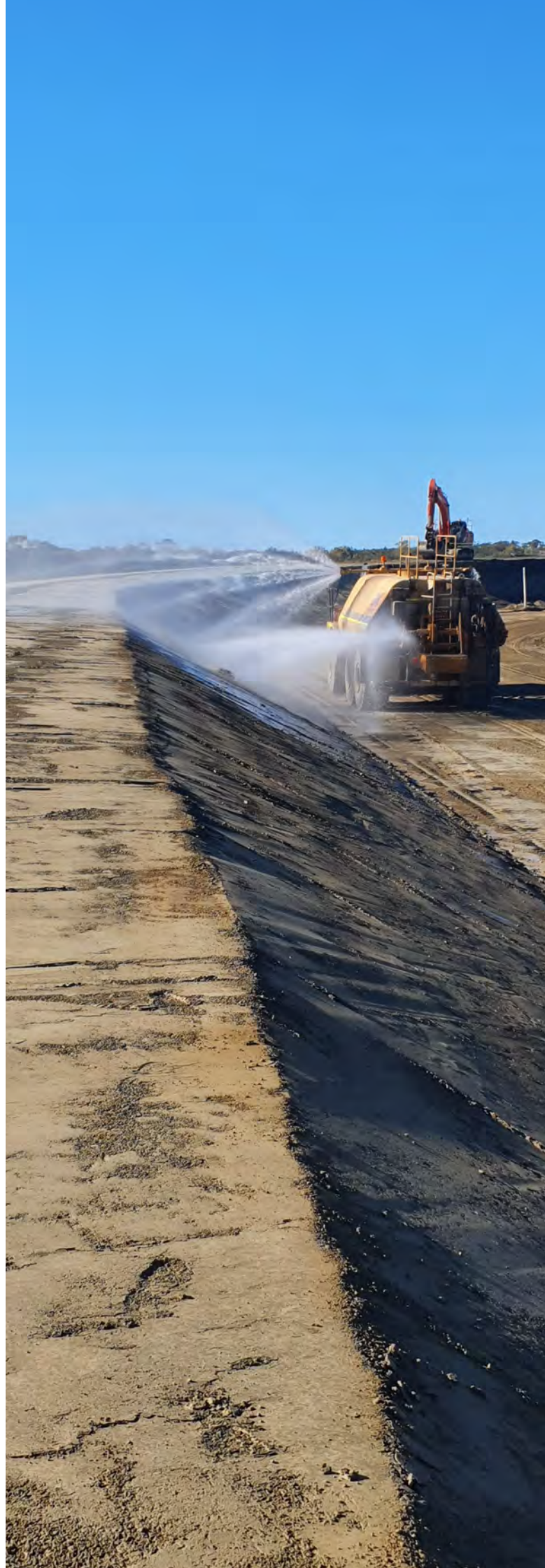
We're responsible for our actions. When we partner with you, we strive to exceed your expectations.

## VALUE REPUTATION

The quality of our work reflects the value we place on your reputation and ours.

## SOLUTIONS ORIENTED

We work with our designers to find our clients the best value solution.







# OUR APPROACH

Our company is third-party accredited in ISO standards for Safety, Quality and Environment.

## SAFETY

Accredited in ISO 45001:2018 Occupational Health and Safety Management System and AS/NZS 4801:2001 Occupational Health and Safety Management System.

## QUALITY

Accredited in ISO 9001:2015 Quality Management System and are proud to offer a quality product and service ensuring client satisfaction.

## ENVIRONMENT

Accredited in ISO 14001:2016 Environmental Management Systems ensuring environmentally friendly practices and contractual obligations.







# OUR PROJECTS

## DEMONSTRATED EXPERIENCE

## AGRICULTURE



GOONDIWINDI, QLD

### WOODS GROUP

#### Grain Pad Construction

Construct 22,500m<sup>2</sup> grain pad  
Win, load, haul, place, compact & trim  
45,000m<sup>3</sup> of gravel capping layer



GRASSDALE, QLD

### MORT & CO

#### Access Road & Pen Clean-up

3.1km of gravel overlay and stabilisation works  
Supply and installation of RCP drainage  
Bitumen sealing and traffic control



# LOCAL & STATE GOVERNMENT



 BROOKSTEAD, QLD

## TOOWOOMBA REGION

### Rehabilitation Brookstead Landfill

Re-profile existing waste material

Import and compact 20,000m3 clean capping material

Supply and install 3ha organic blanket and seed



 QUILPIE, QLD

## TMR ROADTEK

### Road Condition Information Signs

Install Road Condition Signage at 5 locations between Quilpie and Jackson

Pour concrete footing and base slab

Erect sign and solar power

# PLANT & EQUIPMENT HIRE



 CLERMONT, QLD


## MARTINUS RAIL

### Carmichael Rail Network

Provide Wet Hire plant to construct 86km of Greenfields rail formation, Top 600 pavement and drainage. Works carried out 24hr/day on a continuous roster.

Supply and maintain 15 x Plant



 TIMBER CREEK, NT

## BLACK CAT CIVIL

### Delamere Air Weapons Civil and Roadworks

Provide Wet Hire Plant to rehabilitate 11km of unsealed road. Including formation grading, stabilisation and drainage works.

Supply and maintain 10 x Plant



# BULK & HEAVY HAULAGE

## BULK HAULAGE

We have a wide range of trucks to service the local and regional districts with gravel and bulk goods haulage. Our fleet includes:

- Tippers
- Semi and Road Train Side Tippers
- Truck and Quad Dog Trailers
- Side Tipping Truck and Quad Dog
- Truck and Dog Trailers (Rock Bins)
- Semi Water Tankers
- Road Water Carts

## HEAVY HAULAGE

We're capable of moving most Earthmoving and Mining Plant and have multiple floats including:

- Step Deck Tri-Axle Floats
- Quad Float and Load Dolly Combinations



WARWICK, QLD

### ACCIONA CONSTRUCTION (AUS)

#### MacIntyre Wind Farm

Provide Wet Hire Plant to construct 220km internal roads

Bulk Haulage included construction water cartage and pavement material cartage



GRASSDALE, QLD

### MORT & CO

#### Feedlot Pen Clean

Provide Wet Hire Loader and Side Tippers to remove manure from feedlot pens.







# TAILINGS STORAGE FACILITIES

## AURELIA METALS

### DARGUES GOLD MINE

#### TSF STAGE 3 DOWNSTREAM RAISE

Date: Apr 2022 - Jul 2022

Duration: 3 months

Volume: 100,000 BCM

Liner: HDPE

Due to unseasonal rainfall, the Stage 3 embankment works was required to be built 2 years early. This project was constructed under tight time frames and within budget.



MAJORS CREEK, NSW

## AURELIA METALS

### PEAK GOLD MINE

#### TSF STAGE 5 UPSTREAM RAISE

Date: Jan 2022 - Dec 2022

Duration: 12 months

Volume: 400,000 BCM

Tailings deposition continued throughout construction. Upstream embankment was constructed with tailings material. Tailings deposition was managed in conjunction with Aurelia so that the moisture content of the tailings could be managed.



COBAR, NSW



# EVOLUTION MINING

## COWAL GOLD MINE

### UPSTREAM RAISES & ANCILLARY WORKS

Date: 2015 - 2022

NTSF Stage 5 Upstream Raise

900,000 BCM

NTSF Stage 6 Upstream Raise

1.26M BCM

STSF Stage 6 Upstream Raise

1.25M BCM

IWL Dam > 1.0M BCM

Ancillary Works

Plant and Labour Hire



LAKE COWAL, NSW

# EVOLUTION MINING

## MT CARLTON GOLD MINE

### DOWNSTREAM RAISES

Date: 2016 - 2020

TSF Stage 3 Downstream Raise

170,000 BCM

LLDPE Liner

TSF Stage 5 Downstream Raise

254,000 BCM

LLDPE Liner

TSF Stage 6 Downstream Raise

360,000 BCM

LLDPE Liner



MT CARLTON, QLD



# AERIS RESOURCES

## CRACOW GOLD MINE

### TSF1 BUTTRESS STRENGTHENING

Date: Apr 2021 - Sep 2021

Duration: 6 months

Volume: 100,000 BCM

Tailings deposition continued throughout construction.



# EVOLUTION MINING

## CRACOW GOLD MINE

### UPSTREAM RAISES

TSF1 Stage 4 Upstream Raise

Date: Mar 2016 - Sep 2016

Volume: 135,000 BCM

TD4 Stage 6 Raise

Date: May 2018 - Sep 2018

TSF1 Stage 5 Upstream Raise


Date: Apr 2019 - Oct 2019

Volume: 100,000 BCM

Tailings deposition continued throughout construction.







“Our team strives to  
deliver excellence  
every day.”

Bladen Binney  
Managing Director





**bkcivil.com.au**

PHONE 07 4696 2143

ADMIN@BKCIVIL.COM.AU

PLANT@BKCIVIL.COM.AU

TRANSPORT@BKCIVIL.COM.AU

TENDERS@BKCIVIL.COM.AU

13129 NEW ENGLAND HIGHWAY  
CAMBOOYA QLD, 4358 AUSTRALIA

