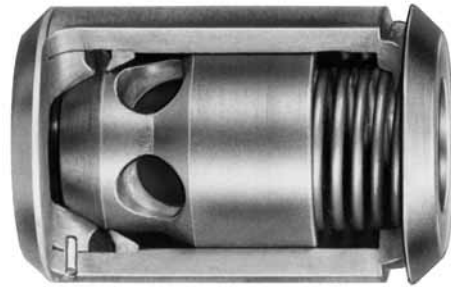
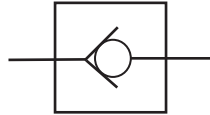


## **Kepsel®** Cartridge Type Insert Check Valves



Kepsel® cartridge valves are designed for simple installation (no expensive machining for cavity) and offer the same outstanding performance as their counterpart Kep-O-seal® inline valves. These spring-operated poppet valves, with optional relief settings, allow free flow in only one direction and prevent backflow. They also are used for relief and by-pass functions. Kepner's *Flexible Seal Seat™* ensures bubble-tight shutoff of liquid or gas, and long service life. Standard and specialty valve designs handle a wide variety of applications, and are ideal for use in sub-plate and manifold assemblies, pump inlet/outlet, and cylinder blocks.

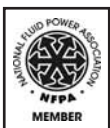
### Features and Benefits:

- *Flexible Seal Seat™* for zero leak (bubble-tight) seal at low and high pressures
- No threaded connections (avoid potential leakage)
- O-Ring seal positively secured
- Poppet stop inside valve body prevents spring from bottoming out
- Generous flow passages allow full flow with minimal pressure drop
- Compact, easy installation - Accessory Kepner Holding Device Kits available

### Valve Specifications:

- Nominal Sizes: 1/16 inch to 2 inch (1.6 mm to 51 mm; 9 Sizes)
- Body Materials: Brass, Steel, 303 or 316 Stainless Steel
- O-Ring Seals: Buna-N, Neoprene, Viton®, EP, other materials available
- Temperature: -300°F to 450°F (-184°C to 232°C), O-Ring dependent
- Check Crack Pressure: 1 to 2 PSI (.07 bar to .14 bar)
- Relief/Check Crack Pressures: 5 PSI (.35 bar), 10 PSI (0.7 bar), 25 PSI (1.7 bar), 50 PSI (3.5 bar) and 65 PSI (4.5 bar), others available
- Operating Pressure: to 3000 PSI (207 bar)
- Flow: to 200 GPM (757 LPM)

*Consult Factory or Distributor for more help. Customer/user is solely responsible to select products suitable for their specific application requirements and to ensure proper installation, operation and maintenance of these products. Improper selection or use of products can cause personal injury or property damage. All sales are subject to Kepner Products Company Standard Terms and Conditions of Sale. Design subject to change without notice.*



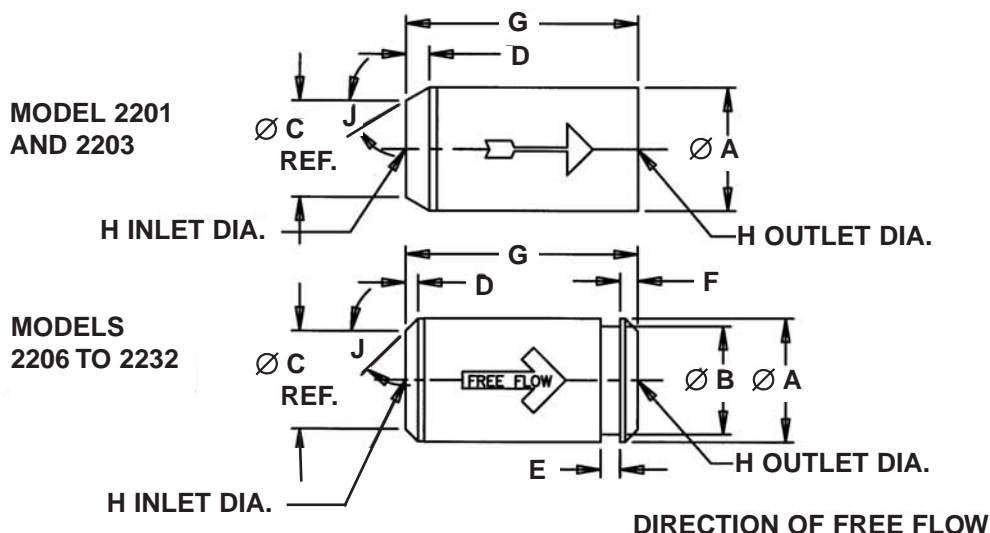
995 N. Ellsworth Avenue  
Villa Park, IL 60181  
Phone: 630-279-1550  
FAX: 630-279-9669  
www.kepner.com



**KEPNER**  
PRODUCTS COMPANY

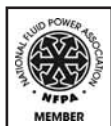
# Kepsel® Cartridge Type Insert Check Valves

## Dimension Diagrams:



MODEL	A	B	C REF	D	E	F	G	H	J	EXTERNAL SEAL O-RING SIZE
2201	.311 .308	--	.17	.12	--	--	.630 .621	.09	30°	008
2203	.498 .494	--	.30	.09	--	--	.844 .835	.22	45°	012
2206	.655 .650	.543 .538	.47	.09	.10	.11	1.224 1.215	.30	45°	015
2208	.811 .806	.699 .695	.62	.09	.10	.11	1.500 1.491	.39	45°	017
2210	.999 .994	.886 .881	.81	.08	.10	.11	1.554 1.545	.48	45°	020
2212	1.217 1.212	1.106 1.102	1.03	.09	.10	.11	1.940 1.931	.61	45°	024
2216	1.686 1.681	1.516 1.511	1.41	.14	.13	.17	2.625 2.615	.84	45°	128
2224	2.311 2.306	2.142 2.136	2.03	.14	.13	.17	3.254 3.245	1.31	45°	138
2232	3.311 3.306	3.070 3.066	2.94	.18	.19	.26	4.505 4.496	1.78	45°	234

Consult Factory or Distributor for more help. Customer/user is solely responsible to select products suitable for their specific application requirements and to ensure proper installation, operation and maintenance of these products. Improper selection or use of products can cause personal injury or property damage. All sales are subject to Kepner Products Company Standard Terms and Conditions of Sale. Design subject to change without notice.



995 N. Ellsworth Avenue  
Villa Park, IL 60181  
Phone: 630-279-1550  
FAX: 630-279-9669  
www.kepner.com

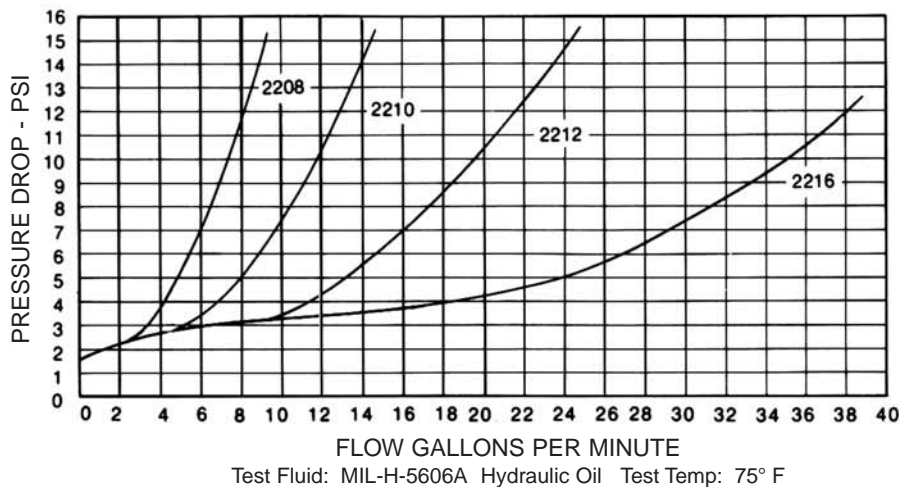
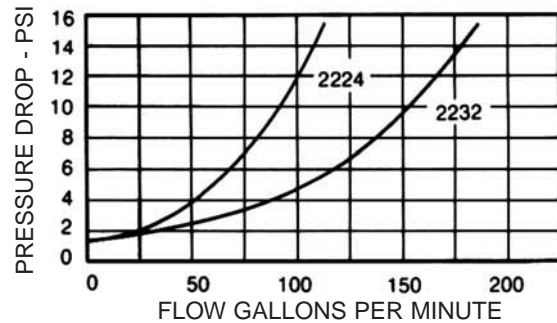
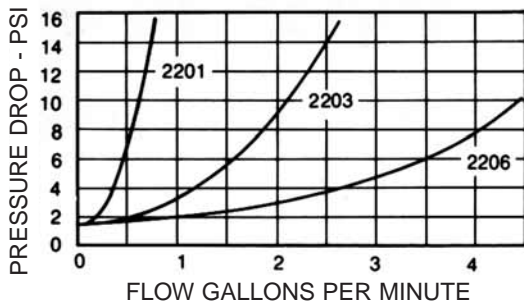


**KEPNER**  
PRODUCTS COMPANY

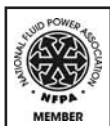
*Part Number and Flow Charts:*

**PART NUMBER EXAMPLE**

<u>BASE MODEL NUMBER</u>			<div style="text-align: center;"> <b>22 06 C - 1</b> </div>
<u>NOMINAL SIZES</u>			
01 = 1/16"	08 = 3/8"	16 = 1"	
03 = 1/8"	10 = 1/2"	24 = 1 1/2"	
06 = 1/4"	12 = 3/4"	32 = 2"	
<u>CONSTRUCTION MATERIALS</u>			
B = BRASS	D = 303 STAINLESS STEEL		
C = STEEL	F = 316 STAINLESS STEEL		
<u>O-RING SEALS</u>			
1 = BUNA-N    9 = NEOPRENE    18 = VITON®    25 = ETHYLENE PROPYLENE    OTHERS AVAILABLE			



*Consult Factory or Distributor for more help. Customer/user is solely responsible to select products suitable for their specific application requirements and to ensure proper installation, operation and maintenance of these products. Improper selection or use of products can cause personal injury or property damage. All sales are subject to Kepner Products Company Standard Terms and Conditions of Sale. Design subject to change without notice.*



995 N. Ellsworth Avenue  
Villa Park, IL 60181  
Phone: 630-279-1550  
FAX: 630-279-9669  
www.kepner.com



**KEPNER**  
PRODUCTS COMPANY

