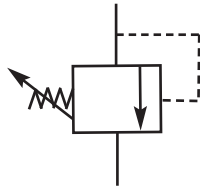


Adjustable Inline Relief Valves



These adjustable, spring-loaded poppet valves are used to limit system pressure. Excess pressure unseats the poppet, allowing flow with minimal increase in system pressure. As fluid is released the system pressure decreases until the spring force re-seats the poppet. Kepner's *Flexible Seal Seat™* ensures bubble-tight shutoff of liquid or gas.

The relief pressure can be set using a tamperproof internal adjustment screw. Standard and specialty valves handle a wide variety of applications requiring fast acting relief performance and tamperproof pressure adjustment.

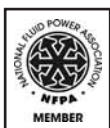
Features and Benefits:

- *Flexible Seal Seat™* for zero leak (bubble-tight) seal
- Outer O-Ring provides non-pressurized threads
- Both O-Ring seals positively secured
- Wide relief adjustment range 50 to 2000 PSI (3.45 to 138 bar)
- Tamperproof Nylok® adjustment to set relief pressure/prevent slippage
- Poppet stop inside valve body prevents spring from bottoming out

Valve Specifications:

- End Connections: Pipe (MPT, FPT; 10 combinations)
Inlet (MPT or FPT); Outlet (FPT); Side Outlet (1/4 inch FPT)
- Port Sizes: 1/4 inch, 3/8 inch, 1/2 inch
- Body Materials: Steel, 303 Stainless Steel
- O-Ring Seals: Teflon®, other materials available
- Temperature: -300°F to 450°F (-184°C to 232°C), O-Ring dependent
- Crack Pressure Ranges: Adjustable 50 to 2000 PSI (3.5 to 138 bar)
3 Spring Ranges: 50 to 400 PSI (3.5 to 28 bar), 300 to 1000 PSI (21 to 69 bar),
900 to 2000 PSI (62 to 138 bar); factory preset pressure available
- Operating Pressure: to 3000 PSI (207 bar)
- Flow: to 10 GPM (38 LPM)

Consult Factory or Distributor for more help. Customer/user is solely responsible to select products suitable for their specific application requirements and to ensure proper installation, operation and maintenance of these products. Improper selection or use of products can cause personal injury or property damage. All sales are subject to Kepner Products Company Standard Terms and Conditions of Sale. Design subject to change without notice.



995 N. Ellsworth Avenue
Villa Park, IL 60181
Phone: 630-279-1550
FAX: 630-279-9669
www.kepner.com

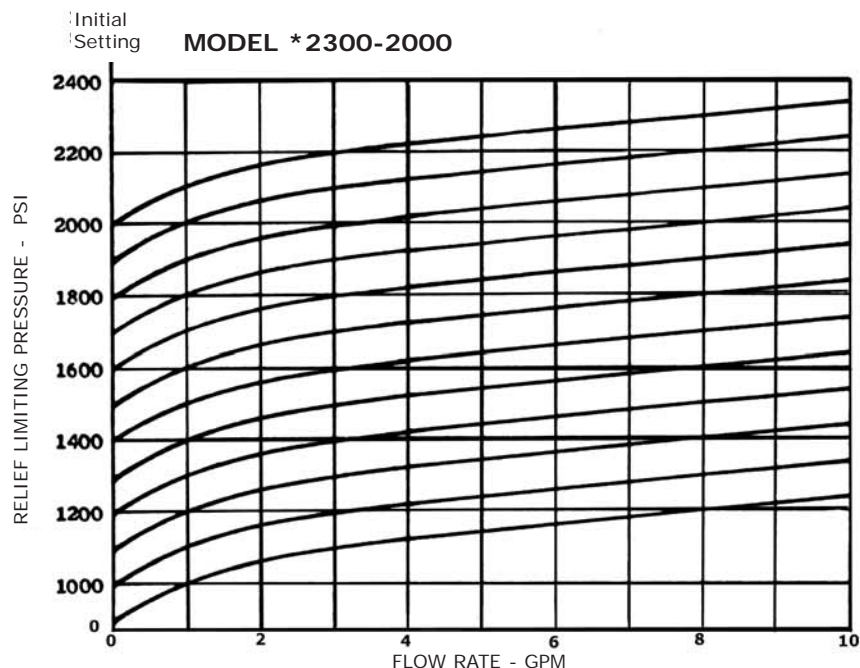
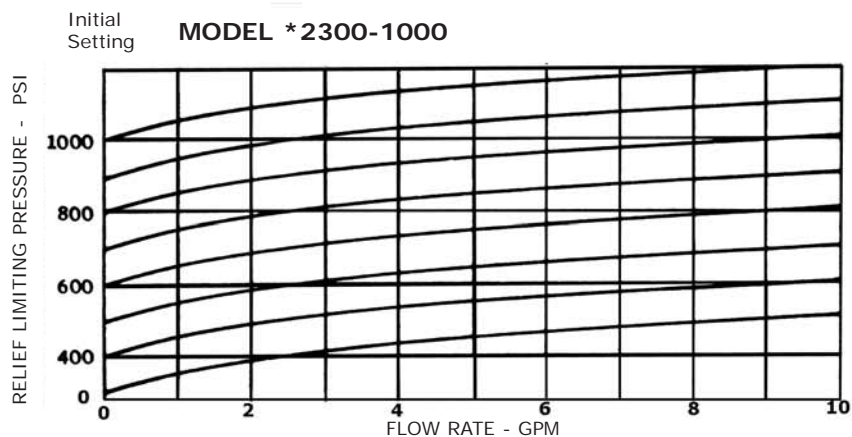
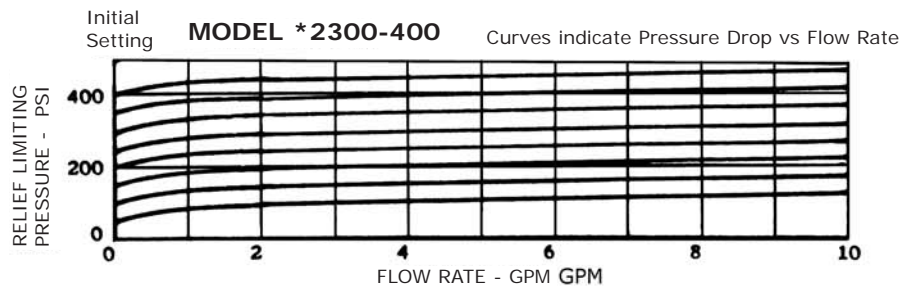


KEPNER
PRODUCTS COMPANY



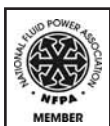
Adjustable Inline Relief Valves

Flow Charts:



Consult Factory or Distributor for more help. Customer/user is solely responsible to select products suitable for their specific application requirements and to ensure proper installation, operation and maintenance of these products. Improper selection or use of products can cause personal injury or property damage. All sales are subject to Kepner Products Company Standard Terms and Conditions of Sale. Design subject to change without notice.

Test Fluid: MIL-H-5606A Hydraulic Oil **Test Temp:** 100° F (Viscosity 77.5 SUS) *TYP. - Covers Models 2300 thru 2309



995 N. Ellsworth Avenue
Villa Park, IL 60181
Phone: 630-279-1550
FAX: 630-279-9669
www.kepner.com



KEPNER
PRODUCTS COMPANY



Adjustable Inline Relief Valves

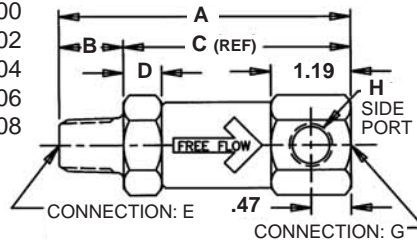
Dimension Diagram and Part Numbers:

| MODEL | A | B | C (REF) | D | E | F | G | H SIDE PORT |
|-------|------|-----|------------|-----|-----|-----|-----|-------------------|
| | | | | | MPT | FPT | FPT | FPT |
| 2300 | 4.51 | .79 | 3.72 | .31 | 1/2 | -- | 1/2 | NONE |
| 2301 | 3.84 | -- | -- | .44 | -- | 1/2 | 1/2 | NONE |
| 2302 | 4.33 | .61 | 3.72 | .31 | 3/8 | -- | 3/8 | NONE |
| 2303 | 3.72 | -- | -- | .31 | -- | 3/8 | 3/8 | NONE |
| 2304 | 4.32 | .60 | 3.72 | .31 | 1/4 | -- | 1/4 | 1/4 |
| 2305 | 3.72 | -- | -- | .31 | -- | 1/4 | 1/4 | 1/4 |
| 2306 | 4.51 | .79 | 3.72 | .31 | 1/2 | -- | 1/4 | 1/4 |
| 2307 | 3.84 | -- | -- | .44 | -- | 1/2 | 1/4 | 1/4 |
| 2308 | 4.33 | .61 | 3.72 | .31 | 3/8 | -- | 1/4 | 1/4 |
| 2309 | 3.72 | -- | -- | .31 | -- | 3/8 | 1/4 | 1/4 |

All dimensions (in inches) for reference only.

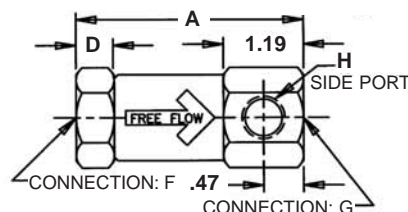
Model:

2300
2302
2304
2306
2308



Model:

2301
2303
2305
2307
2309



PORT SIZES

| | INLET | OUTLET | SIDE OUTLET |
|----|---------|---------|-------------|
| 00 | 1/2 MPT | 1/2 FPT | NONE |
| 01 | 1/2 FPT | 1/2 FPT | NONE |
| 02 | 3/8 MPT | 3/8 FPT | NONE |
| 03 | 3/8 FPT | 3/8 FPT | NONE |
| 04 | 1/4 MPT | 1/4 FPT | 1/4 FPT |
| 05 | 1/4 FPT | 1/4 FPT | 1/4 FPT |
| 06 | 1/2 MPT | 1/4 FPT | 1/4 FPT |
| 07 | 1/2 FPT | 1/4 FPT | 1/4 FPT |
| 08 | 3/8 MPT | 1/4 FPT | 1/4 FPT |
| 09 | 3/8 FPT | 1/4 FPT | 1/4 FPT |

CONSTRUCTION MATERIALS

C = STEEL D = 303 STAINLESS STEEL

CRACK PRESSURE RANGES

400 = 50 - 400 PSI CRACK
1000 = 300 - 1000 PSI CRACK
2000 = 900 - 2000 PSI CRACK

PART NUMBER EXAMPLE

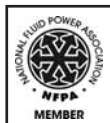
23 05 C - 1000 (750PSI)

BASE
NO.

FACTORY
PRESET
CRACK
PRESSURE
OPTIONAL

O-RING SEALS: TEFLON®

Consult Factory or Distributor for more help. Customer/user is solely responsible to select products suitable for their specific application requirements and to ensure proper installation, operation and maintenance of these products. Improper selection or use of products can cause personal injury or property damage. All sales are subject to Kepner Products Company Standard Terms and Conditions of Sale. Design subject to change without notice.



995 N. Ellsworth Avenue
Villa Park, IL 60181
Phone: 630-279-1550
FAX: 630-279-9669
www.kepner.com



KEPNER
PRODUCTS COMPANY

