

# Reception Curriculum Meeting

## 2025



‘Learning, growing and succeeding together’

# Reception Staff

## Teachers

### Holly class



**Mrs Jennings**

Early Years Lead

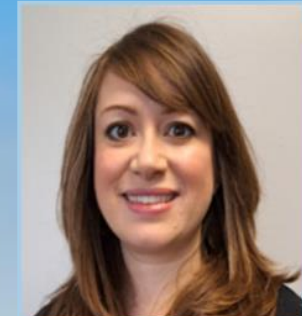


**Mrs Henshaw Mrs Bowyer**

Teach both classes



### Ivy class



**Mrs Smith**

## Teaching Assistants



**Miss Gilfillan**

After school club



**Mrs Reading**

Breakfast club

After school club



**Mrs McKnight**



**Mrs Fulton**

Breakfast club

# What is the Early Years Foundation Stage?

- The Early Years Foundation Stage (EYFS) begins at birth and the final year is in Reception.
- The EYFS Framework (2021) sets the standards for learning, development and care for children from birth to five. It is based on the recognition that all children learn best through play and active learning.
- The EYFS Framework identifies the key **‘characteristics of effective teaching and learning’** and **‘seven areas of learning and development.’**



# Characteristics of Effective Teaching and Learning

When planning and supporting our children, we think it is important to consider the different ways children learn, and reflect this in how we teach and organise our learning environment to best support all of our learners.

- **Playing and Exploring**

We ensure that all children are engaged though exploring, finding out and having a go.

- **Active Learning**

Children should be motivated, involved and learn to persevere.

- **Creativity and Thinking Critically**

Children should have their own ideas, make links in their learning and choose ways to do things.

# Meet Our Friends!

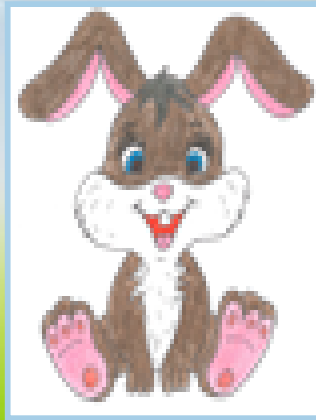
At Whitnash we have developed characters which are linked to the characteristics of effective teaching and learning.

Peter Pug



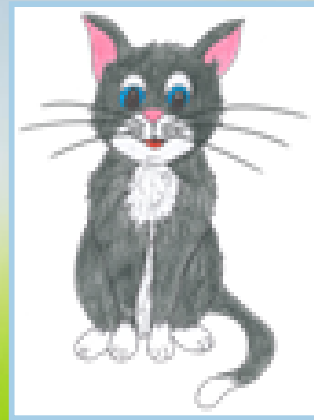
Perseverance

Rosie Rabbit



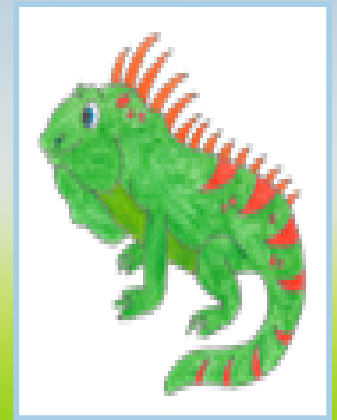
Reflection

Colin Cat



Collaboration

Iggy Iguana



Imagination

# Areas of Learning and Development

There are 7 areas of learning and development:

The Prime Areas- These underpin everything:

- **Personal, Social and Emotional Development**
- **Communication and Language**
- **Physical Development**

The Specific Areas- The prime areas are essential to be able to access these areas:

- **Literacy**
- **Mathematics**
- **Understanding the World**
- **Expressive Arts and Design**

# Communication and Language

**The development of children's spoken language underpins all 7 areas of learning and development.**

- Children are encouraged to develop their conversational skills i.e. back-and-forth interactions.
- Build language with new vocabulary.
- Children will be read to frequently and provided with opportunities to use and embed new words through story-telling and role play.





# Personal, Social and Emotional Development

**Children's personal, social and emotional development is crucial for them to lead happy and healthy lives, and is fundamental to their cognitive development.**

- They will learn how to look after their bodies, including healthy eating, and managing their personal needs independently.
- We will encourage children to be independent and to play co-operatively as well as forming positive relationships with other children and adults.
- We will support children to manage their emotions, develop a positive sense of self and have confidence in their own abilities.





## Prime Areas of Learning

# Physical Development

**Physical activity is vital in children's all-round development.**

- We will support the children to develop their gross-motor skills, including core strength, stability, balance, spatial awareness, co-ordination and agility.
- Fine-motor control will be developed through repeated and varied opportunities to explore and play with
  - Small world activities
  - Puzzles
  - Arts and crafts
- Children will also practise using small tools including pencils and scissors to develop control and confidence.

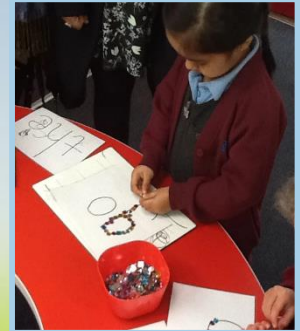


# Specific Areas of Learning

## Literacy

### Reading

- Our aim is to develop a life-long love of reading.
- We will talk with children about the stories and non-fiction books we read.
- Children will learn to link sounds to letters.
- They will learn to decode printed words and recognise familiar words.
- Read simple sentences.



### Writing

- Writing opportunities will be provided in all areas of learning both indoors and outdoors.
- They will be encouraged to write recognisable letters and learn correct formation.
- Spell words by identifying the sounds in them.
- Write simple sentences which can be read by themselves and others..





## Specific Areas of Learning

# Mathematics

We will provide practical opportunities for children to:

- Count confidently.
- Develop a **deep understanding** of numbers to 10 e.g. the composition of numbers.
- Subitise (recognise quantities without counting) up to 5.
- Automatically recall some number bonds to 5 and 10 and some double facts.
- Compare quantities e.g. recognising when one quantity is greater than, less than or the same.
- Opportunities will be provided for children to develop their understanding of shape, space and measures.





# Understanding the World

**This involves guiding the children to make sense of their physical world and their community.**

- The children will listen to a broad selection of stories which represent our diverse world past and present.
- We will look at similarities and differences between themselves and others and among other families and traditions.
- Compare and understand things in the past and now.
- Encourage children to explore and investigate objects, materials, places and living things.



# Expressive Arts and Design

**This encompasses art, design and technology, music, dance, role-play and stories.**

- Explore a variety of materials, tools and techniques exploring colour, design and texture.
- Make use of props and materials in role-play when acting out stories.
- Invent their own stories and adapt familiar stories with their peers and teachers.
- Sing and perform a range of nursery rhymes and songs.



# Reception Baseline Assessment

## What is it?

- The Reception Baseline Assessment is a short, interactive and practical assessment of your child's early literacy, communication, language and mathematics skills.

## What does this mean for my child?

- The main purpose is to create a starting point to measure the progress schools make with their pupils from Reception to Year 6.
- It provides a snapshot of your child's skills and abilities when they start school.
- Your child is not put under any pressure and they cannot 'pass' or 'fail' the assessment.
- Your child's individual assessment data isn't shared with yourself or school.



# Daily Routine

## **8.45am Children welcomed into school and self-register**

- Carpet Time ~ Maths focus
- Play and Learn ~ Indoors and outdoors
- Phonics ~ Read Write Inc
- Funky Fingers' session

## **11.45am- 12.45pm Lunch time**

- Registration
- Carpet Time ~ Literacy focus
- Play and Learn ~ Indoors and outdoors
- Carpet Time ~ PSED focus
- Story Time

## **3.15pm Home time**



# Forest School

In the Summer Term all reception children will have a six week block of Forest School sessions with Mrs Henshaw, our trained Forest School teacher.



# Homework



- Phonics and reading is the main focus in Reception.
  - 10 minutes at least three times a week.
- To begin with your child will receive:
  - a reading for pleasure book
  - a set of letter sound flashcards
  - QR code links to the Read Write Inc virtual classroom
- Shortly you will receive login details for our online reading diary 'Boom Reader'.
- Children will be given a reading book once they are ready.
- We will also provide a fortnightly maths practical learning activity.







# Thank you

We would like to invite you to our phonics  
and reading meeting on  
**Tuesday 7<sup>th</sup> October at 5pm**