



No 35

# Newsletter



19 June  
2026

admin2324@welearn365.com  
01926 426773

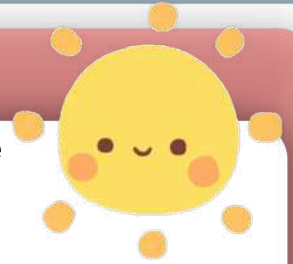
head2324@welearn365.com

[www.whitnashprimaryschool.com](http://www.whitnashprimaryschool.com)



Dear Parents/Carers

## Summer Has Arrived!



Well, it seems as if the summer has finally arrived! It has been a lovely, warm end to the week and our children have enjoyed playing out on the field as we have tested some new lunchtime arrangements. As you may well be aware, next week is predicted to be very hot

To enable children to play out safely, all pupils will need to have suncream applied at home before school, come with a sun hat/cap and fresh drinking water in their water bottles. Children can bring suncream to school in their bag to reapply, but they must be taught at home how to do this - teachers will not be applying cream to children.

We advise that lighter clothes are worn to school on hot days. Children's cardigans and jumpers will need to be labelled at home as children will definitely be taking them off during the day.

## Sports Day



Of course, we have our Sport's Day planned for Thursday 25th June 2026. Details about this Sport's Day and how it is being organised with times and team colours have been sent out.

Usually Sport's Day can be interrupted by the rain, but this year we will have to consider the implications of the imminent heatwave. We will keep an eye on the conditions and try to make an early call ahead of Thursday, if we need to cancel or modify the plans and times.

## No Toys In School

This week we have noticed an increase in children bringing fidget toys or toys in general into school. Unless an agreed arrangement is in place, we ask that children leave these items at home. Some children have mentioned bringing them in for Show and Tell, but toys are not considered a Show and Tell item.



There has also been an increase in children wearing jewellery and nail varnish. These are also not allowed and we ask that they are removed before school.

Wishing you all a glorious, sunny weekend. - Mrs Donna Ellison - Headteacher





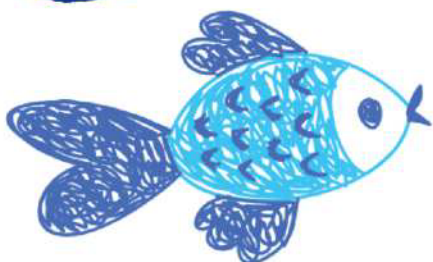
What's in your  
newsletter this  
week?



## Contents

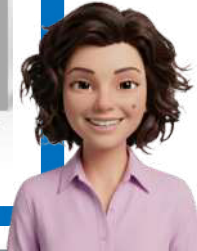
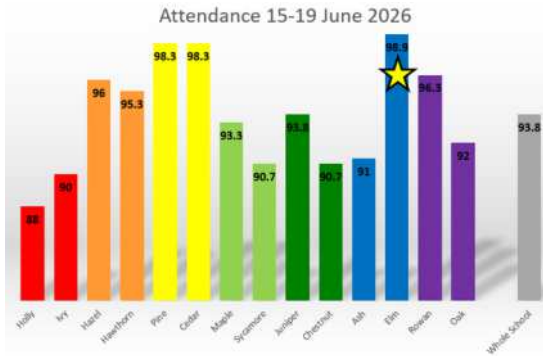
Please note that not all pages are listed here.  
Please click on page number to take you directly to the page.

- 3 Attendance/Mrs Miller Says
- 4 KS1 Achievements
- 6 Maths Challenge and Word Count
- 7 Reception Visit Ryton Pools/Drama Club
- 8 Read For Your School Sponsor Money
- 9 June is Sports Month
- 10 Chicken Pox News
- 11 STEM Challenge - Technology
- 12 Splashathon - Thursday 2nd July 2026
- 13 Rags 2 Riches Collection Date - 06.07.26
- 15 Allocated PE Days/Do You Qualify For Free School Meals?
- 16 Clubs & Community Events
- 21 Family Support Information
- 28 Menu
- 29 What's On?



# Attendance

## Well Done Elm



We want to remind parents and carers of the importance of getting children to school on time, so that they do not miss their learning.

We would also like to remind parents and carers that you need to call the absence line each morning that your child is absent, before 9am with their symptoms or reason for absence. You can also email

[admin2324@welearn365.com](mailto:admin2324@welearn365.com)

Thank you for your co-operation.

Miss Emma Lindon  
Attendance Champion



Children MUST be in the school building before 9.00am for registration. Doors will be closed at this time and if children have missed this, they will need to be brought to the office by parents/carers to ensure that we have them marked as present in school and to make sure they have their lunches ordered. If this does not happen, it runs the risk of the office not knowing children are in class and they will not be ordered a lunch.

**LATE CHILDREN MUST BE ACCOMPANIED BY THEIR PARENT/CARER SO THEY CAN SIGN THEM IN AND NOT LEFT TO ENTER ON THEIR OWN.**



## Mrs Miller Says ...

### All classes

Can we please remind all parents that children should not be coming to school wearing jewellery. Long hair must be tied back, and all children must be wearing the correct uniform. We have seen a significant slip in uniform standards over the last couple of months and this is especially noticeable on PE days. A copy of the uniform policy is available to view on the school website.

### Reception

As your children turn 5, they are no longer entitled to free milk during the school day. If you would like your child to still receive milk, please see page 14 of this newsletter.

### Current Year 2

When your child moves to year 3 in September, your child will no longer be entitled to the Universal Infant Free School Meals. This means that you will need to pay for your child to have a school dinner. The cost of a dinner is £3.05 per day. However if you receive certain benefits, then your child may be eligible for Free School Meals. To see

if your child is eligible, you can apply online at

[www.warwickshire.gov.uk/freeschoolmeals](http://www.warwickshire.gov.uk/freeschoolmeals).

Reminder that if your child is late to school for any reason and require a school lunch, this must be emailed or called through to the school office before 9.30am



## We are a NUT FREE school

As we have several pupils with severe nut allergies, please do not send your child in with ANY nuts, or products containing nuts. **This does include sesame seeds.**

**Please clearly label all cardigans, jumpers, PE kit, hoodies and coats.**



# This Week's Achievements

## Holly - Reception

### Dorothy

For her fantastic independent writing! Dotty always completes her weekly writing challenge with enthusiasm and determination. She confidently uses her phonic knowledge to write captions and sentences, including special friends, finger spaces and full stops. Dotty works hard and always tries her best.  
Well done, Dotty!

### Hita

For her excellent Maths learning! Hita has worked hard to learn a range of number facts and can confidently recall number bonds to 5 and doubles with totals within 10. Well done Hita, keep up the great work!



## Hazel - Year 1

### Sophia

Sophia has been trying really hard in her learning this week, especially in her maths. Sophia has challenged herself to complete the medium maths challenges and has been working to complete this independently. She has persevered fantastically and has had excellent focus when working! Keep up the good work Sophia!



### Robert

Robert has engaged really well in his role as Sports Leader so far this month. He has worked with other Sports Leaders as part of sports month, and we can't wait to take part in the activities they have created! Robert has enjoyed doing his daily mile and our daily challenge. Well done Robert for inspiring those around you to take part!

## Pine - Year 2

### Nayva

For using her phonics in her independent work this week. Nayva has been applying the sounds she has learned in her normal writing - well done Nayva.



### Samuel

For trying so hard in all of his work this week. Samuel has been using his sounds to try and write independently - well done Samuel!

### Seojun

Seojun joined Pine class quite late in the year and he has settled in really well. He has made lots of friends and he is becoming more confident in speaking in English. Well done Seojun - we are so glad you joined our class!



# Key Stage 1

## Ivy - Reception

### Oscar

Oscar has impressed us this week with his excellent recall of number facts. He has shown great confidence when talking about different ways to make numbers up to 10, demonstrating a strong and growing understanding of number composition. Well done, Oscar—keep up the fantastic work!



### Odin

Odin has made fantastic progress in phonics and has shown excellent improvement over the past few weeks. He is confidently using and applying his phonic knowledge in his learning, which is wonderful to see. Keep up the brilliant work, Odin!

## Hawthorn - Year 1

### Malachi

He has been building his ability to focus and concentration to direct his attention to his own work. His work is now showing his knowledge and understanding far more effectively. Malachi has also been determined to improve his presentation and has been putting much more effort into his forming his letters correctly and their position on the line. His hard work is certainly paying off and it has been wonderful to see his pride and confidence blossom.

### Sara

Sara shows a quiet and focused determination towards her learning and as a result her work is demonstrating her growing knowledge and understanding. She always takes great care of her presentation which makes it a pleasure to read her work. Sara is a great example of our key learning behaviours and is resilient when persevering to solve problems. Her ability to use a range of resources for support has really helped her to make great progress.

## Cedar - Year 2

### Robin

Robin has shown an increase in his resilience over this term, asking for help when he is unsure or asking his learning partner. This has been great to see, especially during our tests this week. Robin has been asking some great questions during our learning time and it has been great to see his self-confidence grow, resulting in him working more independently. Well done Robin!

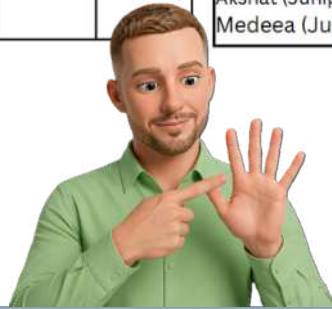
### Edee

Edee has been working hard this hard term to show all our positive learning behaviours. She has been very engaged in our learning, being ready on the carpet or at her table space and making great links between our lessons. She has been taking great care with her handwriting, ensuring that the letters are the right size and formed correctly. Well done Edee.

| Number Bonds 5                                     | Number Bonds 10 | Number Bonds 20 | x 2             | x 5      | x 10       | 10          |
|--|-----------------|-----------------|-----------------|----------|------------|-------------|
|  | Antoni          |                 | Mason Josephone | Koshaan  | Matilda    |             |
| 20   | 30              | 40              | 50              | 60       | 70         | 80          |
|  |                 |                 |                 |          | Maya Logan | Neithen Ivy |
| 90   | Bronze          | Silver          | Gold            | Platinum | Diamond    | Pearl       |
| Tre Neithen Reyansh Gabriella Charlotte Cara Penny | Neithen Mihan   |                 |                 |          |            |             |

|   |          |                         |
|---|----------|-------------------------|
| The most accurate class   |          | CHESTNUT                |
| The most active class   |          | JUNIPER                 |
| The most active pupils:   | Class    | Average minutes per day |
| Doruk   | Chestnut | 29:31                   |
| Vansh   | Juniper  | 20:49                   |
| Oliver  | Chestnut | 17:51                   |
| There were 10 other students who scored over 10 minutes per day:<br>Ayan (Juniper) 16:01 ~ Arshman (Maple) 15:43 ~ Ahaan (Juniper) 14:34<br>Akshat (Juniper) 13:08 ~ Gyanada (Juniper) 12:51 ~ Neithan (Chestnut) 11:56<br>Medeea (Juniper) 11:00 ~ Zyan (Chestnut) 10:26 |          |                         |

**100 Club  
Challenge**



**TIMES TABLES  
ROCK STARS**

## Word Count

| Class    | Words Read | Total      | Quizzes passed this week | Total number of quizzes passed | Weekly Boom Reader Total |
|----------|------------|------------|--------------------------|--------------------------------|--------------------------|
| Holly    | N/A        | N/A        | N/A                      | N/A                            | 16                       |
| Ivy      | N/A        | N/A        | N/A                      | N/A                            | 8                        |
| Hawthorn | N/A        | N/A        | N/A                      | N/A                            | 38                       |
| Hazel    | N/A        | N/A        | N/A                      | N/A                            | 33                       |
| Cedar    | 40,387     | 610,928    | 32                       | 562                            | 5                        |
| Pine     | 19,825     | 762,864    | 21                       | 304                            | 15                       |
| Maple    | 55,904     | 2,683,404  | 54                       | 1,197                          | 11                       |
| Sycamore | 40,539     | 1,356,461  | 52                       | 947                            | 18                       |
| Chestnut | 94,973     | 8,459,885  | 9                        | 980                            | 5                        |
| Juniper  | 105,803    | 2,425,735  | 37                       | 953                            | 2                        |
| Ash      | 177,346    | 6,326,490  | 11                       | 346                            | 4                        |
| Elm      | 254,773    | 9,242,812  | 16                       | 539                            | 2                        |
| Rowan    | 146,268    | 14,896,458 | 11                       | 810                            | 3                        |
| Oak      | 786,286    | 17,745,637 | 13                       | 672                            | 4                        |
| Totals   | 1,722,104  | 64,510,674 | 256                      | 7,310                          | 164                      |



Word Count Winners  
**OAK**

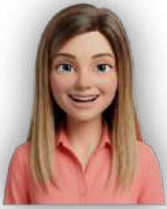
Top Quizzers  
**MAPLE**

Boomreaders  
**HAZEL**

We say well done to Rufus in Oak, for achieving his 4 million words, Raisa in Oak, for achieving her 1 Million words and to OAK for achieving their 17 million words! - Fabulous!

Certificates will be on their way to you shortly.





## Holly and Ivy Visit Ryton Pools



Our Reception children had a fantastic time on their school trip to Ryton Pools. They became enthusiastic minibeast detectives, exploring the wooded area and creating their own minibeast zoos. The children were fascinated by the wide variety of moths they discovered and thoroughly enjoyed using large nets to catch and observe other flying minibeasts.



A picnic lunch was a particular highlight of the day, and there was even time for a visit to the playground before heading back to school.

Reception, you were a wonderful credit to our school and represented us brilliantly throughout the trip. Well done!

Photos from the visit will be featured in next week's newsletter.



## Drama Club Get Ready For King Lear

Our Drama Club have been busy diving into the world of King Lear ready for their performance in July and this week they were very fortunate to have had a Director-Mentor visit with Chris from the Royal Shakespeare Company. During the workshop, the children explored the story of King Lear, practised the scenes set and also rehearsed the language brilliantly!

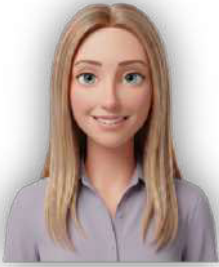


This exciting morning is just the beginning of their Shakespeare journey and in three weeks time the children will join children from other schools to perform King Lear in Stratford and bring the show to life!

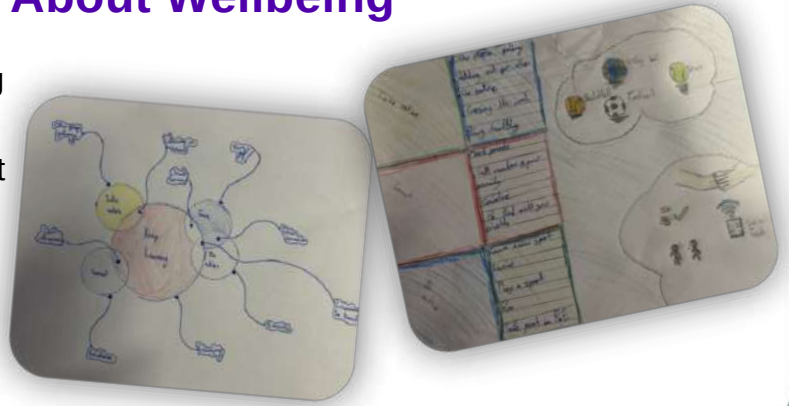
What a brilliant opportunity! Well done Drama Club!



## Year 6 Think About Wellbeing



Year 6 have spent time during PSHE creating posters about wellbeing. They thought about the different areas and how they can meet their own needs.



Just a quick reminder to pay any sponsor money into Parent Pay as soon as you can, so that we can begin to order all the wonderful new books that are available to us!

Not only that, Emma, from Once upon our story, will give us a percentage in additional free books! Here is what we could receive;

All the money raised will go towards books for our school and Usborne will give us additional free books based on the amount of money our children raise.

| Event value    | Free books earned |
|----------------|-------------------|
| Over £600      | £360+ (60%)       |
| £300 - £599.99 | £90+ (30%)        |
| £150 - £299.99 | £15+ (10%)        |

Thank you for your continued support in encouraging Reading!





**June is  
Sports  
Month**

# Sports Leaders Workshops



This week, our fantastic Sports Leaders planned, organised and delivered over eight different activities for children across the school. The workshops helped children develop important Physical Education skills, including teamwork, coordination, balance and communication, while encouraging them to think about ways they can be more active at home.

The skills and ideas explored during these workshops will also support our new OPAL provision, helping children make the most of active and creative playtimes. Children from all year groups took part enthusiastically and thoroughly enjoyed the sessions. A huge thank you to our brilliant Sports Leaders for their hard work, enthusiasm and excellent leadership.





## Chicken Pox in Reception

We have been informed that a few children in Reception have been diagnosed with Chickenpox.

Chickenpox is usually a mild illness and children usually get better by themselves. Children with chickenpox should stay off school for at least five days from onset of rash and until all the lesions have crusted over.

Children who have had chickenpox may develop complications if they also catch scarlet fever. Parents should remain vigilant for symptoms in children who have had chickenpox such as:



- a persistent high fever
- the skin around chickenpox blisters becoming red, hot or painful (signs of infection)
- joint pain and swelling
- your child's symptoms not improving or getting worse.

If you are concerned about the symptoms above, please seek medical assistance promptly. If your child has an underlying condition which affects their immune system, you should contact your GP or hospital doctor to discuss whether any additional measures are needed.

Some children and adults are at higher risk of serious problems if they catch chickenpox. They include:



- pregnant women
- newborn babies
- people with a weakened immune system

These people should seek medical advice as soon as they are exposed to chickenpox or if they develop chickenpox symptoms. They may need a blood test to check if they are protected from (immune) chickenpox.

Further information on both infections can be found at: Chicken pox:

<https://www.nhs.uk/conditions/chickenpox/>

<https://www.nhs.uk/conditions/scarlet-fever/>





# Science, Technology, Engineering & Maths

Do you enjoy solving problems, spotting patterns, experimenting, or creating new things? This week's STEM challenge is designed to get you thinking like a scientist, technologist, engineer or mathematician!

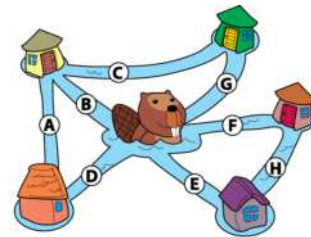
Take on the challenge, test your skills, and have fun exploring the world of STEM. Don't forget to document your work - snap pictures, record your answers and add them to your learning log. You can also email them to the class email address to share your discoveries.

Key Stage 1

Summer 2 - 19.06.26  
Technology Challenge

Beaver wants to swim across all rivers but he is only allowed to swim along each river once.

What is the path the Beaver needs to swim?

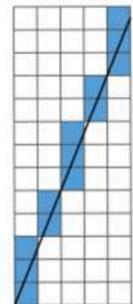


Key Stage 2

### Story

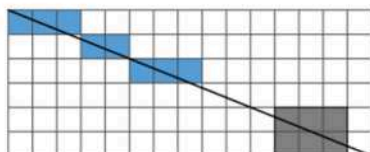
When Pixel tries to draw lines on graph paper, she does this by colouring in blocks of tiny squares. Each of these squares intersects the line she is trying to draw. This means she cannot always draw perfectly straight lines. An example is shown where the blocks of squares Pixel coloured do not look exactly the same as the straight diagonal line that she is trying to draw.

A pattern is formed by the shapes and sizes of blocks of squares that Pixel colours. This pattern repeats every time the line she is trying to draw passes through a corner of a square. In the example, it is always 3 vertical blocks followed by 2 vertical blocks.



### Question

Pixel has started to draw the diagonal line shown and coloured in the first 8 squares as shown. If she continues drawing the line, then how will she colour the 2 x 3 block of squares shown in grey?



- (A)
- (B)
- (C)
- (D)

Key Stage 1

1. 6:50
2. He spent longer eating.

Maths Challenge Answers

1. Either flag 1, flag 2, flag 3 then flag 4 or flag 4, then flag 3, then flag 2 and then flag 1.
2. 1000 steps.

Key Stage 2



# SPLASHATHON!

THURSDAY

## 2ND JULY

### CHILDREN NEED TO BRING:



A CHANGE OF CLOTHES



APPROPRIATE FOOTWEAR



SUN HAT



SUNCREAM APPLIED AT HOME

**WE NEED YOU!**  
**VOLUNTEERS NEEDED**

We can't run Splashathon without our amazing volunteers!  
If you can help on the day, please get in touch with the school office.

LET'S MAKE A SPLASH AND  
HAVE LOTS OF FUN TOGETHER!



# Collection Day!

Our School is raising money by collecting reusable clothes on:

**06 July 2026**

Please use the bags provided, and feel free to add extra bags if you need to!

Thank you!

By donating your unwanted, reusable clothes and accessories, you're helping turn them into affordable clothing for others around the world.

### What can I recycle?

**STOP** and think would you wear it?

## **X** No Thank You!

- POOR QUALITY ITEMS SUCH AS DIRTY, WET, RIPPED OR SOILED CLOTHING.
- UNIFORM
- SOCKS
- PILLOWS
- DUVETS
- CURTAINS
- BOOKS OR CD'S

## **Yes Please!** ✓

- CLEAN, GOOD QUALITY, DRY REUSABLE CLOTHING
- ADULTS, CHILDREN'S & BABIES CLOTHING
- PAIRED SHOES AND FOOTWEAR
- JEWELLERY AND ACCESSORIES
- BELTS AND HANDBAGS



# Little Sips BIG ADVENTURES

Dear parent/guardian,

As you may be aware your child's school has a milk scheme, administered by Cool Milk. Mid-morning milk provides a much-needed nutritional boost and keeps children hydrated between breakfast and lunch. Children receive free milk until the age of 5. After that, they can continue to reap the benefits of fresh mid-morning milk at a subsidised\* cost.

If you'd like to opt in and have not already done so, simply register your child at [www.coolmilk.com/register](http://www.coolmilk.com/register). Your child(ren) will continue to receive free milk whilst under the age of 5 and Cool Milk will get in touch with further information by email shortly before their 5<sup>th</sup> birthday.

For children who are already over 5, it's not too late – our scheme is flexible! As well as being able to register and make payment straight away, you can join and cancel the scheme at any time. We offer yearly, termly and half termly payment periods and a recurring payment option to give you one less thing to remember.

If you already have an online Cool Milk account for a sibling, you can manage your account, make payment and add extra children by logging in at [www.coolmilk.com/parents](http://www.coolmilk.com/parents).

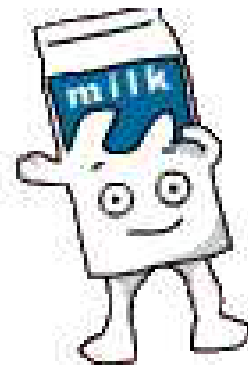
Should you have any questions or need any help, send us a message at [www.coolmilk.com/contact](http://www.coolmilk.com/contact) or give us a call on the number listed below – we're here to help!

Kind regards,

**Cool Milk**

☎: 0800 321 3248

🌐: [www.coolmilk.com](http://www.coolmilk.com)



SCAN TO REGISTER

\*Milk for under-5s is fully funded by DHSC via the Nursery Milk Scheme. Milk for over-5s is subsidised by Defra via the School Milk Scheme.



## PE Days

Here are the days allocated to each class for PE. Please keep checking this list, as it can change, however, you will be notified via the class teacher if this happens.

Please ensure that children wear the correct PE kit, suitable for both indoor and outdoor lessons and playtimes.

White T-shirt with navy/black shorts. Navy/black tracksuit or joggers and sweatshirt/hoodie.

All PE kit should be plain or has the school badge on it. Brand logos are permitted but must be small. Other colours and football shirts may not be worn.

Please ensure that the correct swimming kit is brought into school on your child's allocated swimming day.



**Don't forget to put your child's name in their PE kit.**

| Class       | PE Day                      |
|-------------|-----------------------------|
| Holly & Ivy | Wednesday                   |
| Hazel       | Wednesday & Thursday        |
| Hawthorn    | Wednesday & Friday          |
| Pine        | Monday & Friday             |
| Cedar       | Monday & Friday             |
| Maple       | Monday & Wednesday          |
| Sycamore    | Wednesday & Thursday        |
| Juniper     | Tuesday (swimming) & Friday |
| Chestnut    | Friday                      |
| Ash         | Tuesday & Wednesday         |
| Elm         | Tuesday & Wednesday         |
| Oak         | Wednesday & Thursday        |
| Rowan       | Wednesday & Thursday        |

## Do you qualify for FREE SCHOOL MEALS?

### Reasons to apply

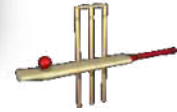
Even if your child is currently receiving free school meals because they are in Reception, Year 1 or Year 2, you should still apply for benefits-related FSM if you think you may be eligible.



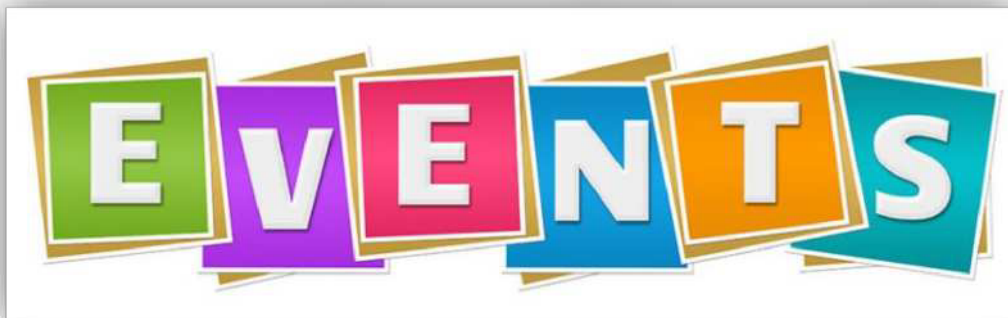
Doing so means that our school will be given extra funding for six years, which can help to fund valuable teaching and learning support for the school. Applying for benefits-related FSM also means you will be eligible to receive funding for the holiday periods from the Warwickshire Local Welfare Scheme.

You can apply for benefits-related FSM at any time online  
[warwickshire.gov.uk/education-learning/apply-free-school-meals](http://warwickshire.gov.uk/education-learning/apply-free-school-meals)





# Children's Clubs and



The following pages are filled with information of things to do, things to see for you and your children in and around Warwickshire.





#SALUTEOURFORCES

**Saturday 27 June 2026**



I'm supporting

## ARMED FORCES DAY

### FREE Community Event

Free activities & food for children - hot dogs, burgers and ice creams\*  
Free Indian vegetarian food (Sikh Langar)\*  
Paid food & drink vendors Music from Vintage Celine Rose  
Military reenactors, tanks & vehicles Military heritage village  
Stalls and exhibitions from the Royal Navy, British Army and Royal Air Force  
Find out more about a career in the military  
Opening Parade by Standard Bearers, cadets, serving personnel and veterans

\*while stocks last

Saturday 27 June, 11am to 4pm  
Pump Room Gardens,  
Leamington Spa, CV32 4AA



For further information visit: [warwickdc.gov.uk/armedforcesday](http://warwickdc.gov.uk/armedforcesday)



**KING EDWARD VI SCHOOL**  
SHAKESPEARE'S SCHOOL

## OPEN MORNING

SATURDAY 27TH JUNE 2026 9.00AM - 12 NOON



Current Year 5 students and their parents are invited to attend this Open Morning for Year 7 Entry in September 2027. You will be given an opportunity to look around the School and meet staff and students and gain a flavour of what a K.E.S. education has to offer. Please also visit our website at [www.kes.net/admissions](http://www.kes.net/admissions) for our Virtual School Experience.

The Headmaster will speak at 9.15am and 10.15am in the Levi Fox Hall

"King Edward VI school is a rich and vibrant community. Pupils thrive at this school" OFSTED



Chapel Lane, Stratford-upon-Avon, Warwickshire, CV37 6BE

t: 01789 293351 e: [office@kes.net](mailto:office@kes.net)

w: [www.kes.net](http://www.kes.net)

Regrettably there will be no parking available on the School site.



## KIDS CLUB AT BT

Onside Coaching  
Reception to Yr 6

Expore, Play & Smile  
All summer long!



from only

**£24**

per day

or save money 4 days for **£84**  
5 days for **£95**

Times

9.30am to 3.30pm

Tuesday 21st July  
to Friday 21st August

Early drop off 8.:30 - 9:30am

Late pick up 3:30 - 4:30pm

**+£3.50**  
each

WE ACCEPT CHILDCARE VOUCHERS &  
TAX-FREE CHILDCARE search 'Onside Wraparound'

Ofsted  
Registered

to book visit [btkidsclub.onsidelive.co.uk](http://btkidsclub.onsidelive.co.uk)



## Choral Evensong

The Collegiate Church of St Mary is delighted to welcome those celebrating the conclusion of Armed Forces Week 2026 to a service of Choral Evensong.

The readings, hymns and choir will reflect the contribution the armed forces make to maintaining our national security.

The organ, choir and congregation will be accompanied by brass instruments on what promises to be an uplifting and inspiring occasion.

**Sunday 28 June 2026**

**from 5.30pm**

St Mary's Church, Warwick






**KIDS LEARN TO SAIL THIS SUMMER**  
Sailing Summer Clubs 13<sup>th</sup> July - 10<sup>th</sup> August

Suitable for complete beginners  
For ages 8-15  
Club membership not needed  
Wetsuit, buoyancy aid and helmet provided  
All staff have relevant qualifications  
Swimming skills not needed but must be water confident

Book online: [www.draycotewater.co.uk/summer-courses](http://www.draycotewater.co.uk/summer-courses)




Find us on FB




**Drop-in SUPPORT SESSIONS**

18<sup>th</sup> June  
16<sup>th</sup> July  
20<sup>th</sup> August  
17<sup>th</sup> September  
15<sup>th</sup> October

**@ 11am - 1pm**  
**BRUNSWICK HUB**  
98-100 Shrubland St  
Leamington Spa  
CVV31 3BD  
(Children Welcome)

Contact Lucy for more information via:

📞 01926 422123  
✉ [lucyduncombe@brunswickhlc.org.uk](mailto:lucyduncombe@brunswickhlc.org.uk)



Imagination takes you everywhere...

**Summer Camps**

Our unique storytelling and drama holiday camps are fun, exciting and very popular! Each child has the opportunity to increase their confidence and develop their creative expression in a fun, relaxed, secure and nurturing environment.

"William described Debutots camps as the 'funnest' thing in the whole galaxy!"

Book your space now!

"You run the most organised and caring programme we have experienced this far. It's a precious feeling to know that your child is in that environment, thank you!"



Kiera Klair  
01926 800872  
[kiera@debutots.co.uk](mailto:kiera@debutots.co.uk)

## Exciting News!

Debutots Holiday Clubs are coming to Warwick and Leamington! See what your child can get up to this Summer with our first Summer Holiday Camp...

**Award winning interactive storytelling and dramatic play classes that are unique, original and fun!**

At Debutots, we bring stories to life through interactive storytelling, drama and imaginative play. Our sessions are designed to build confidence, communication and creativity while supporting the EYFS and KS1 national curriculum.

Every session encourages children to join in, move, explore and use their imagination in a fun and engaging environment.

### What makes our Summer Camps Different?

Our Summer Camps offer a slightly different experience, combining the magic of Debutots storytelling with a wider range of themed activities, games crafts and creative play.

These longer sessions give children the opportunity to build friendships, grow in confidence and enjoy an exciting holiday experience filled with imagination, movement and fun!

Interested in booking your child in for a summer of fun? Click the button below to book!

[Book Week 1 Here](#)

[Book Week 2 Here](#)



# Swim Lessons

with **Leamington Swimming Club**



This is a unique opportunity for children in Years 3 and 4 to improve their swimming and learn the skills used by our competitive swimmers.

21<sup>st</sup> June, 28<sup>th</sup> June, 5<sup>th</sup> July, 12<sup>th</sup> July

3 to 3.50pm

Newbold Comyn Leisure Centre

Cost £20

All children should be able to swim 50m front crawl, backstroke and breaststroke.

Email [info@swimleamington.org](mailto:info@swimleamington.org) to reserve your place



## TABLE TREASURE EVENT

SAVE THE DATE: 29<sup>TH</sup> JUNE 12:30-4PM

COME AND SELL WITH US!  
JUST £10 TO HIRE A TABLE TO  
SELL YOUR PRE-LOVED  
CHILDREN'S TOYS, BOOKS,  
CLOTHING AND EQUIPMENT.



PLEASE CONTACT HELEN ON  
07703381764



LILLINGTON CHILDREN AND FAMILY  
CENTRE  
3 MASON AVENUE  
CV32 7QE  
01926 887597



# MAKE SUMMER EPIC!

AWARD-WINNING, MULTI-ACTIVITY  
HOLIDAY CAMPS



RECEPTION



YEARS 1-2



TEAM GAMES



YEARS 3-4 & 5-6



BATTLE SESSIONS GAMES

21<sup>ST</sup> JULY UNTIL 21<sup>ST</sup> AUGUST  
DATES VARY AT LOCATIONS

### LOCATIONS

KENILWORTH WARWICK GATES WARWICK



BONUS SUMMER ACTIVITIES  
WATER FIGHTS / SOAK THE LEADER / GO GO OLYMPICS & MORE!

### PRICES & TIMINGS

|                                       |        |
|---------------------------------------|--------|
| STANDARD DAY (9AM - 3.30PM)           | £37.95 |
| GO GO MORNING MAGIC (8AM ONWARDS) †   | +£5.50 |
| GO GO AFTER HOURS (3.30PM - 5.30PM) † | +£6.00 |

WE ACCEPT  
TAX FREE CHILDCARE & CHILDCARE VOUCHERS

10% OFF SIBLING DISCOUNT: SIBLING10



FOLLOW OUR SOCIALS  
FOR MORE DISCOUNTS & OFFERS!

/GoGoMakers/ @go\_go\_makers

HOW TO BOOK & FIND OUT MORE  
[www.gogomakers.co.uk](http://www.gogomakers.co.uk)





# FREE SUMMER COMPUTING HOLIDAY CLUB!

WHITNASH PRIMARY

17th Aug - 28th Aug | 9:00 -14:00 each day

Get your child active and turn their screen time into skill time this Summer Holiday Club!

From Minecraft coding to multi-sports, this club has something for every child.

- Fun for kids aged 5-13yrs
- Free admission for Free HAF child or just £25 per day! see full detail on the back of the flyer.
- Take part in a range of activities including, coding, craft, puzzle, games, indoor and outdoor sports and much much more.





| Venue                                 | Address   | Dates                    |
|---------------------------------------|---|--------------------------|
| Lillington Nursery and Primary School | Cubbington Rd, Lillington, Leamington Spa, CV32 7AG | 17th August -21st August |
| Lillington Nursery and Primary School | Cubbington Rd, Lillington, Leamington Spa, CV32 7AG | 24th August -28th August |

\*The club is free for Pupil Premium families, young carers, children who would benefit from social inclusion during the holidays or any child who has previously attended a Jam Coding club. Already have a voucher code and ready to book? Simply scan the QR code to secure your place today.



### How To Book

The club is free for children who are eligible for pupil premium, young carers, who would benefit from social inclusion during the holidays, or have previously attended a Jam Coding club

Booking is easy- choose one of two simple options:  
 1. Scan the QR code to the right  
 2. Booking Link:  
[www.r4tech.co.uk/summer-camc-booking-page.cfm](http://www.r4tech.co.uk/summer-camc-booking-page.cfm)



Established in 2014    Equipment Provided    Insured & DBS Checked    Prizes Awarded

- "Jam Coding Club is a safe place where he can thrive, build social skills, and experience success in a way that feels both comfortable and exciting for him."
- "My son genuinely loved the sessions and was absolutely buzzing each day when I collected him. The staff definitely further ignited a passion for coding/robotics and the sessions were so well put together."
- "Amazing! My son loves and has been to every coding club Jam Coding has offered. They have really inspired my little boy to try coding at home. He could be an ambassador for you as he tells everyone how good it is!"




Stay up to date with all our latest news

Telephone: 07701080465    Website: [www.jamcoding.co.uk](http://www.jamcoding.co.uk)    Email: [coventry.am@jamcoding.co.uk](mailto:coventry.am@jamcoding.co.uk)

## IMS Music Lessons at Whitnash Primary School New Starters - September 2026 .(Existing students do not need to reapply)

We have a few spaces for children in Y3 and above to start music lessons in September. Lessons take place during the school day. Learning an instrument gives children a special skill which helps develop their confidence, self-esteem and individuality. It also boosts cognitive thinking and overall academic achievement.

We are offering the choice of Piano (Y3+), Keyboard (Y3+), Recorder (Y3+), Flute (Y4+), Clarinet (Y4+) & Saxophone (Y5+). Shared lessons (£7.25pw) are ideal for beginners but we also offer 20 minute individual lessons (£16pw) for those who are already underway and would like more time.

We have Flutes, Clarinets & Saxophones available for hire for £17 per term (equivalent to £1 per week).

To enrol please go to [www.independentmusicsolutions.co.uk](http://www.independentmusicsolutions.co.uk) and click on "Enrol for Music Lessons".

Please enrol before the end of this term.

In the unlikely event that we are oversubscribed priority will be given to the oldest children.

We look forward to working with your children in September.

James Suckling  
 Managing Partner





# Family Support

The following pages contain lots of information for parent/family support.



# June - July Timetable

1<sup>st</sup> June - 17<sup>th</sup> July  
2026

No sessions  
on 14<sup>th</sup> July

## Barnardo's Warwick District Children and Family Centres

Email: [warwickdistrictcfc@barnardos.org.uk](mailto:warwickdistrictcfc@barnardos.org.uk)  
<https://instagram.com/warwickcfc/>

<https://www.facebook.com/warwickchildrenscentres/>

<https://coventryandwarwickshire.barnardos.org.uk/children-and-family-centres/warwick/>



### Monday

#### Lillington

Postnatal Fitness Class  
for families  
9.30-10.30am

#### Tiny Tales

Booking is essential  
(from birth to on the move)  
Sensory story time

#### Warwick Library

12.45-1.45pm

#### Whitnash Civic Centre

1.30-2.30pm

### 8<sup>th</sup> June

#### Lillington

Table Treasure - for sale  
with Baby play zone  
12.30-4pm  
New and nearly new toys,  
books, clothing  
Entry fee: £1/ adult

#### Sell with us!

Book a table -  
call Helen:  
07703 381 764

### Tuesday

#### Kenilworth Scout & Guide Centre

Baby Time  
9.30-11am

#### Lillington Library

#### Tiny Tales

(from birth to on the move)  
Sensory story time  
9.30-10.30am  
Booking is essential

#### Chapter House

#### St Margaret's Church

Family Time  
10-11.30am

#### Kingsway

Baby Chatter Matters  
(for 5 months to on the move)  
11.30-12.30pm  
Booking is essential

#### Lillington

Home Education  
Parent Led Group  
1.30-3.30pm  
Booking is essential

#### Kingsway

Time Together After school club  
for age 5-11 with parents -  
SIBLINGS WELCOME  
Until 30<sup>th</sup> June  
3.30-4.30pm  
Booking is essential

### Wednesday

#### Lillington

Family Time  
10-11.30am

#### Kingsway

Family Time  
10-11.30am

#### Westgate

Baby Time  
10-11.30am

Family Time  
11am-12.30pm

#### Baby Chatter Matters

(for 5 months to on the move)  
2-3pm  
Booking is essential

#### Tiny Tales

Booking is essential  
(from birth to on the move)  
Sensory story time

#### Leamington Library

12-1pm

#### Kenilworth Library

1.30-2.30pm

#### Myton Gardens

#### Primary School

Family Time  
2-3.30pm

### Thursday

#### Kingsway

Baby Time  
9.30-11am

Family Time  
1.30-3pm

#### Westgate

Family Time  
9.30-11am

NEW

#### Jephson Gardens

Family Time  
9.30-11am

Not on 25<sup>th</sup> June

#### Leamington Library

#### Baby Chatter Matters

(for 5 months to on the move)  
1.30-2.30pm  
Booking is essential

NEW



### Friday

#### Lillington

Baby Time  
9.30-11am

Family Time  
2.30-4pm

#### Radford Semele

#### Community Hall

Family Time  
10.30am-12pm

#### Kenilworth Library

#### Baby Chatter Matters

11am-12pm  
Booking is essential

NEW

FREE

NO NEED TO BOOK onto most of our Baby, Family  
Time & Baby self-weigh facility sessions. Please  
note our sessions do have limited spaces. When we  
are full we can not have any more families in the  
room for safety reasons. If there are any changes  
we will inform you on our Website and Facebook

### Saturday

#### Lillington

#### GOGOMAKERS

#### Saturday Club

Drop & go session  
For children aged  
5-11 year olds  
10-11.30am  
on 6<sup>th</sup> & 20<sup>th</sup> June  
Booking is essential

Family Time in the  
garden  
10-11.00am  
13<sup>th</sup> & 27<sup>th</sup> June  
11<sup>th</sup> July

NEW

#### Baby self-weigh facility - Drop in

#### Kingsway CFC

Fridays 9.30-11.30am

#### Lillington CFC

Thursdays 2.30-4.30pm

#### Westgate CFC

Mondays 2-4pm

- To book onto:
- Baby Chatter Matters
  - Tiny Tales
  - Saturday Club
  - Home Ed. Group
  - Time Together -After school club
- Scan me:



Speech Concern?  
Please contact Helen on  
07703 381764 or  
[helen.keaney@barnardos.org.uk](mailto:helen.keaney@barnardos.org.uk)



Changing childhoods.  
Changing lives.



## Barnardo's Warwickshire Children and Family Centres

A coordination of services for families with children and young  
people aged 0-19 and up to age 25 with SEND



To improve outcomes and life chances for all children, young people (pre-birth to 19 or 25 for those with Special Educational Needs and/or Disabilities) and their families  
with a particular focus on the 1001 critical days, from conception until age 2.

### Advice and Support

Our staff are on hand to provide  
information and signposting on a  
wide range of issues for families, for  
example: Baby/Toddler, Sleep,  
Breastfeeding, Children's Behaviour,  
Speech and Language, Finance,  
Benefits, Debts, Housing and the  
Home environment, SEND and  
childcare funding.

Interested in **volunteering with us?**  
Please contact:  
[sally.hesselworth@barnardos.org.uk](mailto:sally.hesselworth@barnardos.org.uk)

#### Baby Time

A relaxed  
environment  
where parents can  
socialise and  
babies (crawlers  
and pre-walkers)  
can explore.

#### Chatter Matters™

Structured session to  
support early  
communication through  
fun, interactive activities.

#### Family Time

Ideal for families with  
children on the move to  
socialise and learn through  
play. All siblings welcome.

#### Stepping Stones

Nurturing session to support  
early communication through  
fun, interactive activities.  
If you think this is better for  
you and your child, please  
contact:  
[karen.chin@barnardos.org.uk](mailto:karen.chin@barnardos.org.uk)

### Warwick District Children and Family Centres and Outreach Venues:

#### Chapter House

#### St Margaret's Church

Church Close  
Whitnash  
CV31 2HJ

#### Civic Centre

Arce close  
Whitnash  
CV31 2ND

#### Kenilworth

#### Scout & Guide Centre

Fishponds Road  
Kenilworth  
CV8 1EY

#### Myton Gardens

Primary School  
Fusiler way  
Warwick  
CV34 8DU

#### Kingsway C&FC

#### Baker Avenue

#### Leamington Spa

CV31 3HB

01926 336793

#### Radford Semele

#### Community Hub

68 Lewis Rd.

Royal Leamington Spa

CV31 1UQ

#### Lillington C&FC

#### 3 Mason Avenue

#### Lillington

CV32 7QE

01926 887597

#### Jephson Gardens

#### Glasshouse entrance

Leamington Spa

CV32 4AA

#### Westgate C&FC

#### Bowling Green Street

#### Warwick

CV34 4DD

01926 490629



NEW Library Tiny Tale sensory sessions -  
for addresses scan:

### Partner & Agency Contact Details

#### Early Help Family Support

#### Family Support Workers

Call 01926 412412

[www.warwickshire.gov.uk/childrenandfamilies](http://www.warwickshire.gov.uk/childrenandfamilies)

#### Family Information Service

Providing information, advice and  
one-to-one support for families  
Call: 01926 742274

Email: [fis@warwickshire.gov.uk](mailto:fis@warwickshire.gov.uk)  
[www.warwickshire.gov.uk/fis](http://www.warwickshire.gov.uk/fis)

#### Warwickshire Child and Family

#### Wellbeing Service (Health Visiting)

For any enquires please call: 0300 2470072

Email: [wcfw.contact@hrcg.caregroup.com](mailto:wcfw.contact@hrcg.caregroup.com)

[www.warwickshirechildandfamily.co.uk](http://www.warwickshirechildandfamily.co.uk)

ChatHealth text service: 07520 615293

9am-4.30pm, Monday to Friday

#### Breastfeeding Counselling at

Lillington CFC\_07906 959632 - Lisa

#### Midwifery

#### Midwives - Bluebell Clinic @ Warwick Hospital

01926 495321 Ext: 6974 or 6977

[diamondmidwiferypractice@swft.nhs.uk](mailto:diamondmidwiferypractice@swft.nhs.uk)

Early Breastfeeding Support Team: 01926 628529

#### Health Visiting Drop In Clinics at C&FC

Kingsway CFC: 2<sup>nd</sup> & 4<sup>th</sup> Monday of the month 9.30-11.30am

Lillington CFC: 1<sup>st</sup> & 3<sup>rd</sup> Wednesday of the month 9-11am

Westgate CFC: 2<sup>nd</sup> & 4<sup>th</sup> Tuesday of the month 9.30-11am

#### Other Useful Contact Details

Act on Energy: Email: [advice@actonenergy.org.uk](mailto:advice@actonenergy.org.uk) Call: 0800 988 2881

Adult & Community Learning: Email: [ac@warwickshire.gov.uk](mailto:ac@warwickshire.gov.uk) Call: 01926 736392

Citizens Advice: Monday to Friday - 9am-5pm. Call 0800 250 5715

Refuge's Domestic Violence and Abuse Service Warwickshire. Call: 0800 408 1552

Warwick District Foodbank. Call: 07850 293383. [www.warwickdistrict.foodbank.org.uk](http://www.warwickdistrict.foodbank.org.uk)

SENDIASS: Email: [warwickshiresendiass@barnardos.org.uk](mailto:warwickshiresendiass@barnardos.org.uk) Call: 01789 593 159



**BHLHC**  
**SEND**  
SPECIAL EDUCATIONAL NEEDS & DISABILITIES  
*Community*  
SUPPORT

Find us on FB

*Drop-in*  
SUPPORT SESSIONS

**@ 11am - 1pm**  
**BRUNSWICK HUB**  
98-100 Shrubland Stt  
Leamington Spa  
CVV31 3BD  
(Children Welcome)

18<sup>th</sup> June  
16<sup>th</sup> July  
20<sup>th</sup> August  
17<sup>th</sup> September  
15<sup>st</sup> October

Contact Lucy for more information via:  
☎ 01926 422123  
✉ [lucyduncombe@brunswickhlc.org.uk](mailto:lucyduncombe@brunswickhlc.org.uk)

**entrust**  
care partnership

**HAF**

**Summer Playscheme**

*SEND Playscheme for Young People with additional needs 8 - 16 years*

**At: Cubbington Village Hall, Broadway, Cubbington, Leamington Spa, CV32 7JR**

WEEK 1 - Monday 20th July 1-5pm  
Wednesday 22nd July 10am-2pm  
WEEK 2 - Monday 27th July 1-5pm  
WEEK 3 - Wednesday 5th August 10am-2pm  
Thursday 6th August 1-5pm  
WEEK 4 - Wednesday 12th August 10am-2pm  
Thursday 13th August 1-5pm  
WEEK 5 - Monday 17th August 1-5pm  
Wednesday 19th August 10am-2pm  
WEEK 6 - Wednesday 26th August 10am-2pm  
Thursday 27th August 1-5pm

Diane Morris 07961 830527  
[dianemorrisentrust@gmail.com](mailto:dianemorrisentrust@gmail.com)

**TRINITY**  
CATHOLIC SCHOOL

**Open Mornings**

**For Year 5 and 6 pupils and their families to visit our school**

**Open Events - Registration Form - 1st July and 9th July 2026 - Fill out form**

**1<sup>st</sup> and 9<sup>th</sup> July 2026**  
**9.15am to 10.30am**





Funded by  
UK Government

## Summer 2026

# Holiday Activities & Food (HAF)

Dear Parent/Carer,

The DfE-funded HAF (Holiday Activities & Food) programme provides young people the opportunity to access enriching activities alongside healthy meals over the **main school holidays at Easter, Summer and Christmas**.

*Please note that this programme is entirely separate from the Local Welfare Scheme's household support funding (i.e. supermarket HUGGG vouchers).*

**All young people who currently meet the following two criteria are eligible:**

- In full-time education between Reception - Year 11
- Receiving benefits-related free school meals

Each eligible young person can access a maximum of **16 sessions** over the Summer holidays. Families have the flexibility to book with multiple activity providers if desired. All activity providers can request additional funding for 1:1 support if this is required, however this will depend on their staff availability and qualifications. We also fund a number of SEND-specific activities.

Please note you will need a HAF code to book activities. **Eligible families can access their HAF code through the 'Request a HAF code' form at [www.warwickshire.gov.uk/haf](http://www.warwickshire.gov.uk/haf).**

Summer activity listings will be live on our site from **Monday the 22nd of June** so that you can book. Activities will then begin from **Monday 20th July**.

With our regards,  
Warwickshire HAF Team



Scan the QR  
code to visit  
our website



**Family Information Service**

0800 408 1558 [fis@warwickshire.gov.uk](mailto:fis@warwickshire.gov.uk) Facebook: @WarwickshireFIS





**Tuesday 16 June 2026**

This week's Family Information Service newsletter includes information about:

Drowning Prevention Week  
Summer holiday activities at Warwickshire Country Parks  
Learning Disability Week

and much more!

[Click here for Newsletter](#)



# SEND PARENT/CARER SUPPORT GROUP

With the Brunswick Hub team members Laura and Georgia

## Group or one to one support

Supporting with but not limited to:

- DLA and benefits
- EHCP and education
- Housing Support
- Employment Support
- Health and Wellbeing
- SEND support

Every Wednesday

1pm-2:30pm

At the Lillington Children's Centre  
3 Mason Avenue,  
Leamington Spa  
CV32 7QE



For more information contact:

Laura - 07356123171 or Georgia - 07923230579



# SEND Support Group

## Come and join us!

If you have any worries or concerns surrounding SEND please come and have a chat with us!  
Meet with other parents/carers in similar positions.  
We can help with a wide range of concerns.

Running on the third Thursday of every month 10am-12pm at the Brunswick Hub.

Contact us:

Georgia.mansell@brunswickhlc.org.uk  
Megantownsend@brunswickhlc.org.uk



Coventry and Warwickshire Talking Therapies

## NHS Talking Therapies

### Living well with Long-term Physical Health Conditions

Talking Therapies offers support to patients who have been recently diagnosed or living with a physical health condition.

- Are you worried about your health?
- Does your health get you down?
- Do you feel embarrassed or frustrated by your health condition?
- Do you feel your health holds you back in life?



If yes, all of these are normal responses that can be difficult to manage, but Talking Therapies can help. We work with conditions that include, but are not limited to:



Diabetes, Respiratory conditions, Cardiac problems and Chronic pain

Register with us today for an initial appointment online, by phone or by speaking with your GP. Talking Therapies works with people aged 16-plus, who are registered with a GP, across the Coventry and Warwickshire area.



for anxiety and depression

Telephone: 024 7667 1090

Lines are open from 9:00am to 4:30pm Monday to Friday

Visit [www.talkingtherapies.covwarkpt.nhs.uk](http://www.talkingtherapies.covwarkpt.nhs.uk) or scan the QR code for more information.



# HOLIDAY ACTIVITIES AND FOOD



## HAF

Any young person aged 4 - 16 years old (in full-time education) who receives benefits-related free school meals can request a HAF code



The programme offers free support to families on lower incomes, giving eligible young people access to enriching activities and healthy meals during the main school holidays.

You can attend up to 4 sessions during Christmas and Easter and up to 16 sessions over Summer



The activities available include sports, animal care, performing arts and so much more!



Contact the Family Information Service for more information.

Call 0800 408 1558 Email [fis@warwickshire.gov.uk](mailto:fis@warwickshire.gov.uk)



[www.warwickshire.gov.uk/haf](http://www.warwickshire.gov.uk/haf)



# FREE SCHOOL MEALS



School meals are free for lots of families, check if you are eligible to apply!

## So much more than lunch...

A free school meal:

- creates healthy eating habits
- improves learning and behaviour
- saves money and time
- helps schools get extra funding

Did you know that claiming free school meals means that your child will get access to free school holiday activities and food?



To find out more and for help to apply for free school meals, please contact: [freemeals@warwickshire.gov.uk](mailto:freemeals@warwickshire.gov.uk) or call 01926 359189



## Can I apply?

Your child could be eligible for free school meals if you get any of the following:

- Income Support or Jobseeker's Allowance
- Income-related Employment and Support Allowance
- Support from National Asylum Support Service (NASS)
- Guarantee Pension Credit
- Child Tax Credit (with no Working Tax Credit) with an annual income of no more than £16,190
- Working Tax Credit run-on - paid for four weeks after you stop qualifying for Working Tax Credit
- Universal Credit - if you apply on or after 1 April 2018 your household income must be less than £7,400 a year (after tax and not including any benefits you get)

You should still apply if your child is aged 4-7 and receives a universal free school meal

Find out more and apply at [www.warwickshire.gov.uk/fsm](http://www.warwickshire.gov.uk/fsm)



# educaterers®

caring is our secret ingredient

FREE  
SCHOOL  
MEALS



## UNIVERSAL INFANT FREE SCHOOL MEALS - IS MY CHILD ELIGIBLE?

If you have a child in Reception or Key Stage 1, your child is entitled to a free lunch everyday. By offering so much great choice, we're confident your child will find a meal combination they enjoy from our menu to help them develop and excel during school time.

Please contact your child's school for more information.



## TOP 5 facts about our lunch.

### Fact 1

We are school meal specialists serving over 100,000 meals every week.

### Fact 2

At least 75% of our menu is freshly prepared everyday by our professional kitchen teams.

### Fact 3

All our staff are trained in allergy awareness to provide menu advice and support for customers with food allergies and intolerances.

### Fact 4

We work with NHS dietetics teams across the region to support customers with special dietary needs.

### Fact 5

Most importantly, we love what we do and we are always on a mission to create fun at lunchtime.

## OUR INGREDIENTS



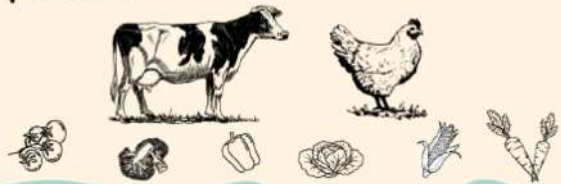
IT ALL BEGINS WITH OUR PASSION FOR  
FANTASTIC FOODS!

When we source our ingredients, we seek out trusted suppliers to provide the freshest, most nutritious and highest quality produce possible.

Our suppliers put sustainability, animal welfare and ethical trading at the heart of their businesses. As a result, we know with confidence, the food we serve is wholesome, safe and fully traceable.

Dairy - Yoghurt is made on site reducing plastic packaging going into landfill

Baked Goods - Bread is freshly baked on site everyday. All our cakes and biscuits are homemade, we don't use any packet mixes.



## Join Our TEAM

Are you passionate about food?

Could you help us serve healthy lunches to local school children?

Would you like to work school hours, term time only?

Then why not join one of our friendly school based teams? Full training package offered with opportunities for career progression.

Find us on Facebook at Educaterers Join Our Team or via the link on our website.



[Educaterers.co.uk](http://Educaterers.co.uk)



# Lunch Menu - 22 June 2026

## Week Three

### Allergy Key:

|                |                  |                |
|----------------|------------------|----------------|
| vg - Vegan     | G - Gluten/Wheat | F - Fish       |
| v - Vegetarian | C - Celery       | M - Mustard    |
| h - Homemade   | S - Sesame       | SU - Sulphates |
| D - Dairy      | E - Egg          | SB - Soya      |

### MONDAY

Choose a main meal ...

(v)(h) Macaroni Cheese with Crusty Bread (D,G)  
(vg) Plant Power Burger in a Bun with Diced Potatoes (G)  
Jacket Potato - (v) Cheese (D), Tuna (F.E) or (v) B/ Beans  
Cheddar Cheese Bap (G.D)

On the side ...

Fresh Salad Bar  
Vegetables of the Day

For dessert ...

(v) Strawberry Whip with Fruit (D)  
(v) Yoghurt (D,SB) or Fresh Fruit

### TUESDAY

Choose a main meal ...

(h) Beef Lasagne with Garlic Bread (G.D)  
(vg) Country Garden Vegetable Fingers with Seasoned Wedges (G)  
Jacket Potato - (v) Cheese (D), Tuna (F.E) or (v) Baked Beans  
Tuna Mayonnaise Bap (F.E.G)

On the side ...

Fresh Salad Bar  
Vegetables of the Day

For dessert ...

(v)(h) Apple Cookie (G.E)  
(v) Yoghurt (D,SB) or Fresh Fruit

### WEDNESDAY

Choose a main meal ...

British Roast Chicken Fillet, Yorkshire Pudding, Gravy with Roast Potatoes (D.E.G)  
(v) Plant Power Toad in the Hole with Roast Potatoes (G.E.D)  
Jacket Potato - (v) Cheese (D), Tuna (F.E) or (v) B/ Beans  
Egg Mayonnaise Bap (G.E)

On the side ...

Fresh Salad Bar  
Vegetables of the Day

For dessert ...

(v) Pancake with Fruit (G.E.D)  
(v) Yoghurt (D,SB) Fresh Fruit

### THURSDAY

Choose a main meal ...

Pork Hot Dog with Herby Diced Potatoes (G.SU.SB)  
(v)(h) Vegetable Curry with Rice  
Jacket Potato - (v) Cheese (D), Tuna (F.E) or (v) Baked Beans  
British Ham Soft Bap (G)

On the side ...

Fresh Salad Bar  
Vegetables of the Day

For dessert ...

(v)(h) Jim Jam Chocolate Brownie (G.E.D)  
(v) Yoghurt (D,SB) or Fresh Fruit

### FISH

### FRIDAY

Choose a main meal ...

(msc) Salmon Fishcake with Chips (FG)  
(v) Cheese & Tomato Pizza Wedge with Chips (G.D)  
Jacket Potato - (v) Cheese (D), Tuna (F.E) or (v) Baked Beans  
British Roast Chicken Bap (G)

On the side ...

Fresh Salad Bar  
Vegetables of the Day

For dessert ...

(v)(h) Carrot & Orange Cookie (G)  
(vg) Jelly with Fruit  
(v) Yoghurt (D,SB) or Fresh Fruit



# What's On ...

## June 2026

|    |          |        |   |
|----|----------|--------|---|
| 01 | Month    | Month  | Sports Month                            |
| 22 | Week     | Week   | Healthy Schools Week                    |
| 22 | Monday   | 9.10am | KS2 Achievement Assembly                |
| 23 | Tuesday  | 5pm    | 2026/27 Reception Parents' Meet & Greet |
| 25 | Thursday | tbc    | Sports Day                              |
| 29 | Monday   | Day    | Juniper to St. Johns House              |
| 29 | Monday   | 9.10am | KS1 Achievement Assembly                |

## July 2026

|    |           |              |  |
|----|-----------|--------------|--|
| 01 | Wednesday | Day          | Chestnut to St Johns House                           |
| 02 | Thursday  | 9.10         | Music Assembly with Mr Sucklling                     |
| 02 | Thursday  | tbc          | PTA Sponsored Splash                                 |
| 06 | Monday    | 9am          | Rags 2 Riches Collection                             |
| 06 | Monday    | 9.10am       | KS2 Achievement Assembly                             |
| 07 | Tuesday   | tbc          | RSC King Lear Trip                                   |
| 07 | Tuesday   | Day          | Reports to Parents                                   |
| 08 | Wednesday | Day          | Shuffle Up Day! (Transition Day)                     |
| 09 | Thursday  | Day          | Year 1 Visit Hatton Country World                    |
| 09 | Thursday  | Lunch        | Wimbolden Tennis Menu                                |
| 09 | Thursday  | 3.15         | Parents' Open Evening (no appointment needed)        |
| 10 | Friday    | 3.15         | Year 6 Enterprise Sale                               |
| 14 | Tuesday   | 9am          | Year 6 Performance to Parents & Leavers Assembly     |
| 16 | Thursday  | 9.15<br>2.30 | KS2 Achievement Assembly<br>KS1 Achievement Assembly |
| 17 | Friday    | am           | Year 6 Bowling and Pizza                             |
| 17 | Friday    | 3.15         | Pupils Break Up for Summer                           |

Please note that dates are subject to change

[Download 2025/26 calendar here](#)

