



Newsletter



No. 32

admin2324@welearn365.com

head2324@welearn365.com

22 May

01926 426773

2026

www.whitnashprimaryschool.com

SCHOOL MEALS

IMPORTANT INFORMATION

You will have recently received a letter informing you that we have had notification from Educaterers that the school meal prices were increasing from 1st April 2026.

We have delayed passing this increase to parents, whilst we consider the implications for the school. However, with all things considered, we are not in a position to absorb this increase as a school and have little choice but to increase the prices. Therefore, from Monday 1st June 2026, the meal price will increase to £3.05 per meal.

We thank you for your understanding.

CURRENT YEAR 2

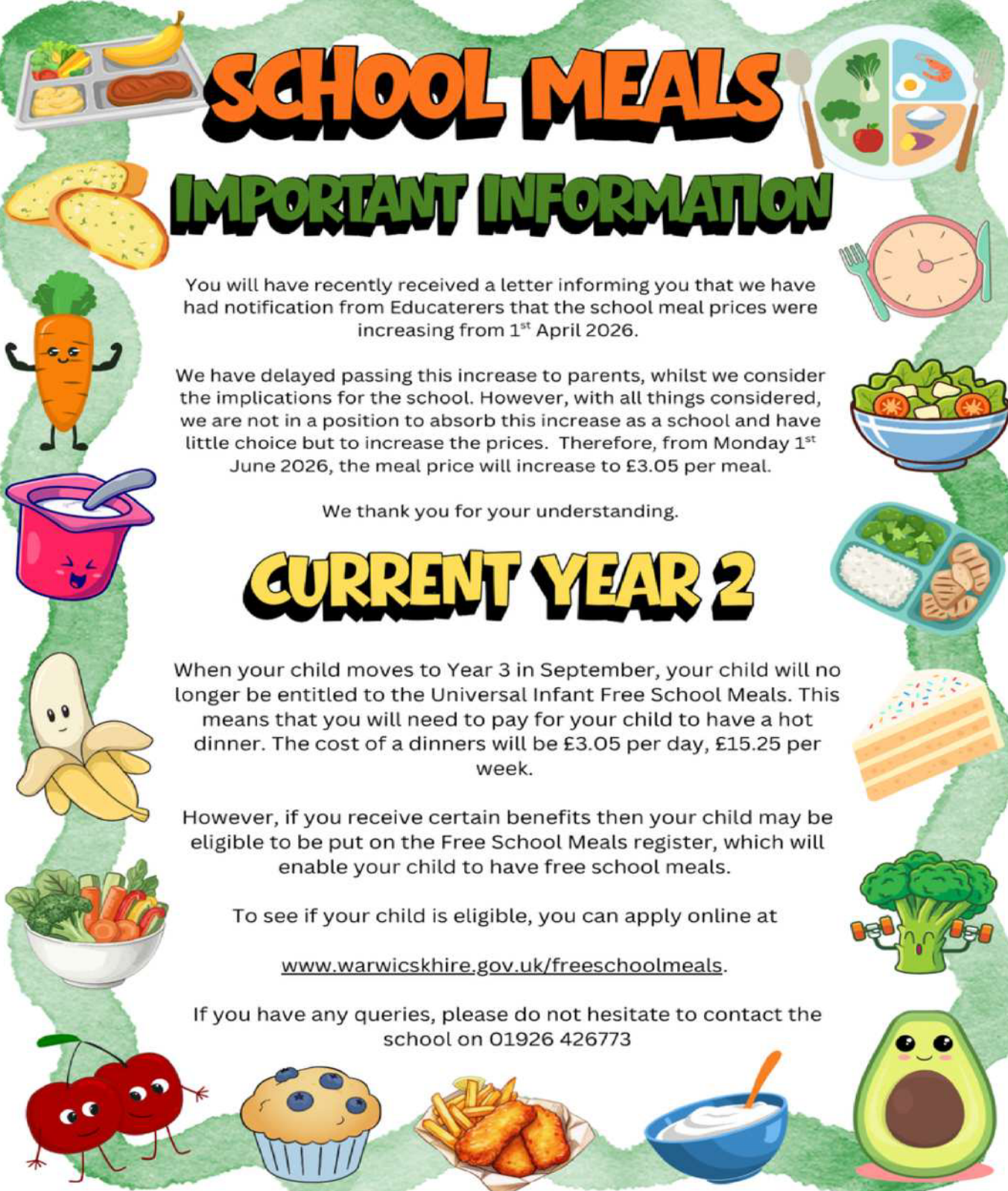
When your child moves to Year 3 in September, your child will no longer be entitled to the Universal Infant Free School Meals. This means that you will need to pay for your child to have a hot dinner. The cost of a dinners will be £3.05 per day, £15.25 per week.

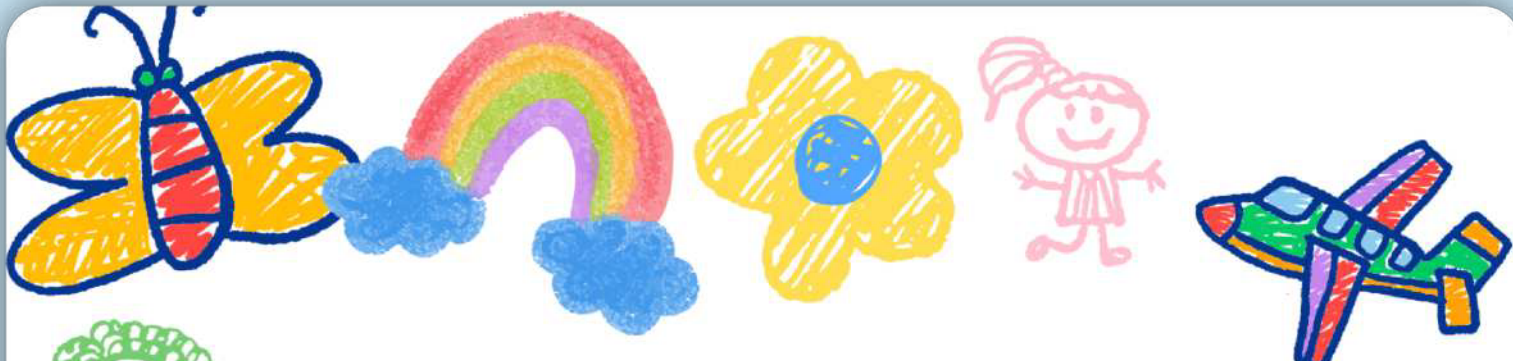
However, if you receive certain benefits then your child may be eligible to be put on the Free School Meals register, which will enable your child to have free school meals.

To see if your child is eligible, you can apply online at

www.warwickshire.gov.uk/freeschoolmeals.

If you have any queries, please do not hesitate to contact the school on 01926 426773

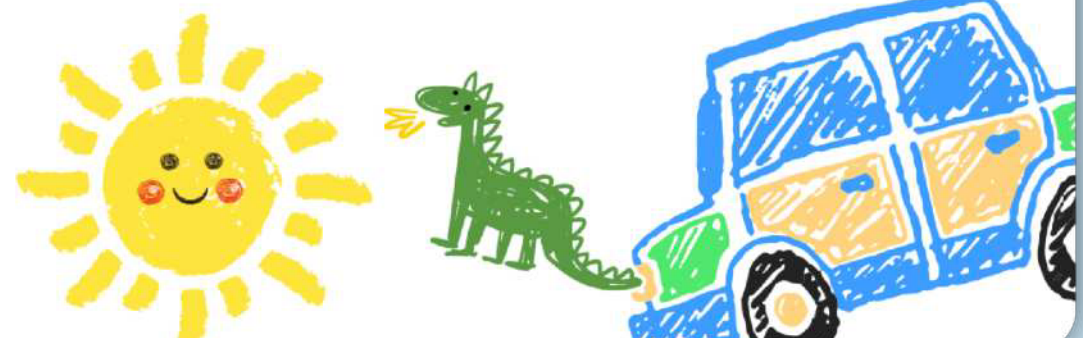




Contents

Please note that not all pages are listed here.
Please click on page number to take you directly to the page.

- 3 Message from Mrs Ellison - Headteacher
- 4 Attendance/Mrs Miller Says
- 5 Maths Challenge and Word Count
- 6 Weather - Amber Alert
- 7 Eco Council Community Litter Pick
- 9 Read For Your School
- 10 STEM Challenge - Maths
- 11 Mrs Bowyer - 25 Years Service
- 12 Rags 2 Riches Collection Date
- 14 Allocated PE Days/Do You Qualify For Free School Meals?
- 15 Clubs & Community Events
- 19 Family Support Information
- 25 Special Menus Coming Up
- 26 Menu
- 27 What's On?





Dear Parents & Carers

Walk To School Week

This week our school have been taking part in Walk to school Week. Materials to support this initiative/charity were provided by Living Streets. Living Streets have a campaign to help more children walk to and from school, delivering our initiatives across early years, primary, secondary and university settings. Children have watched a video and completed the Walk to School classroom packs provided by Living Streets.



Children who have walked this week have been rewarded with stickers and bookmarks.

Community Litter Pick



We were so delighted with the turn-out to the Community Litter Pick on Wednesday after school. We can't thank Mrs Henshaw and Mrs Roger enough for this event.

The families involved managed to collect loads of rubbish on their walk around the area. Whilst it really sad that there is so much litter being dropped in our communities in the UK these days, it is heartening to know that we have members of school who are willing to join us to take action to make things a little better. Thank you to all who gave their time, I am sure the local residents will notice you have all done such a great job.

Whitnash Whirlwinds

On Thursday the Whitnash Whirlwinds finally got to complete their car test runs. As you will be aware our very own F1 race team have been building their kit car and are now ready to put it to the ultimate test against other schools on Thursday 4th June at a race track in Lichfield. This incredible opportunity has only been possible due to the commitment of Mrs Middleton, who not only made the link with Williams F1 and Greenpower, but has also given up hours of her own time to support the children to complete their project. We want to send her a huge Whitnash thank you for presenting our children with a learning experience of a lifetime.

Goodbye



Today we are sending our best wishes to Mrs Hackett and Miss Middleton who have begun their maternity leaves. Despite being heavily pregnant, both ladies have given their all to our school. They have provided thorough and detailed handovers to the staff taking on their respective roles and we can't thank them enough.

Our school, children and parents hope that they will both have time to put their feet up (not at the gym, Mrs Middleton!) before their bundles of joy arrive. Both staff members will be missed but will be returning to us in the Spring Term 2027.

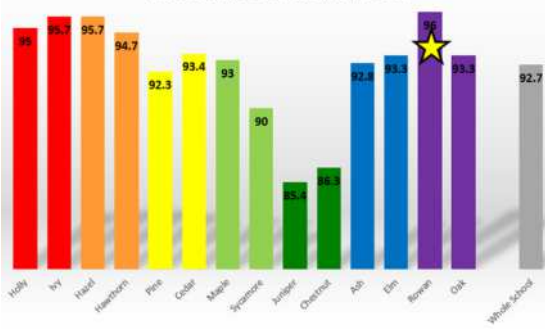
Wishing you all a wonderful week. Mrs Donna Ellison Headteacher



Attendance

Well Done Rowan

Attendance 18-22 May 2026



We want to remind parents and carers of the importance of getting children to school on time, so that they do not miss their learning.

We would also like to remind parents and carers that you need to call the absence line each morning that your child is absent, before 9am with their symptoms or reason for absence. You can also email

admin2324@welearn365.com

Thank you for your co-operation.

Miss Emma Lindon
Attendance Champion



Children MUST be in the school building before 9.00am for registration. Doors will be closed at this time and if children have missed this, they will need to be brought to the office by parents/carers to ensure that we have them marked as present in school and to make sure they have their lunches ordered. If this does not happen, it runs the risk of the office not knowing children are in class and they will not be ordered a lunch.

LATE CHILDREN MUST BE ACCOMPANIED BY THEIR PARENT/CARER SO THEY CAN SIGN THEM IN AND NOT LEFT TO ENTER ON THEIR OWN.



Mrs Miller Says ...

All classes

We ask that all parent's keep balances on Parent Pay to an absolute minimum. We have a number of large balances outstanding which put the school under unnecessary financial pressure.

All children should be dressed in the correct uniform. We are noticing a high number of children coming to school dressed in clothes which are not part of the school uniform. This is especially noticeable on PE days. The uniform policy is available to view on the newsletter should you need it. We will be sending copies of this home when we see children around the school who are not dressed in the correct uniform.

Reception

As the children turn 5, they are no longer entitled to free milk during the school day. If you would like them to still receive this, please see page 14 of the newsletter.

Years 3-6

Please remember to pack your child a healthy snack to eat at break time. This should be either a piece of fruit or vegetable.

Year 6

Hoodies have now been ordered, there we cannot accept any more orders.

Reminder that if your child is late to school for any reason and require a school lunch, this must be emailed or called through to the school office before 9.30am



We are a NUT FREE school

As we have several pupils with severe nut allergies, please do not send your child in with ANY nuts, or products containing nuts. This does include sesame seeds.

Please clearly label all cardigans, jumpers, PE kit, hoodies and coats.





TIMES TABLES ROCK STARS

100 Club Challenge

The most accurate class		CHESTNUT
The most active class		JUNIPER
The most active pupils:	Class	Average minutes per day
Doruk	Chestnut	16:13
Alexander	Chestnut	5:19
Gyandev	Pine	5:00



Number Bonds 5	Number Bonds 10	Number Bonds 20	x 2	x 5	x 10	10
Evelyn Ginnio Antoni Sophia	Aiza		Nicolas Paul-John Matilda Finn	Sebastian	Gabriela Shaurya Ani Sara Ben Alfie Oliver Cerys Riley Evelyn Naomi Koshaan Nicolas Lucas	
20	30	40	50	60	70	80
				Jaxson	Ivy	Vivienne- Mae Gurpreet Geetika Shreeya
90	Bronze	Silver	Gold	Platinum	Diamond	Pearl
Cara	Lacey			Harper Ruby Angel Gyanda		

Word Count

Class	Words Read	Total	Quizzes passed this week	Total number of quizzes passed	Weekly Boom Reader Total
Holly	N/A	N/A	N/A	N/A	13
Ivy	N/A	N/A	N/A	N/A	10
Hawthorn	N/A	N/A	N/A	N/A	44
Hazel	N/A	N/A	N/A	N/A	31
Cedar	24,737	518,239	32	480	5
Pine	7,452	686,940	15	242	12
Maple	122,437	2,474,725	47	1073	8
Sycamore	54,512	1,227,511	8	825	10
Chestnut	288,622	8,175,177	33	945	1
Juniper	101,885	2,094,754	52	852	1
Ash	299,947	5,947,785	12	324	6
Elm	273,704	8,628,965	12	512	7
Rowan	0	14,188,602	0	779	1
Oak	178,930	16,471,641	3	645	2
Totals	1,352,226	60,414,339	214	6,677	151



Word Count Winners
ASH

Top Quizzers
JUNIPER

BOOMREADERS
HAWTHORN

We say well done to Chestnut, for achieving their 8 million words, Juniper for achieving their 2 million words - Fabulous!

We say congratulations to Doruk in Chestnut for achieving his Silver raccoon award - well done! There are still lots of children who are close to getting their Bronze award - lots of 47's and 48's.

I wonder how many will achieve it next week!





AMBER ALERT



Temperatures could reach 30C over the bank holiday weekend

Heat health alerts, external have been issued by the UK Health Security Agency (UKHSA) - in association with the Met Office - across much of the Midlands and south-east England valid from 14:00 Friday 22 May until 17:00 Wednesday 27 May.

With the unseasonable warmth expected to continue into Tuesday and beyond, more parts of England and Wales could experience a heatwave after the bank holiday weekend.

Risk Description

Significant impacts are likely across health and social care services due to the high temperatures, including:

- a rise in deaths, particularly among those ages 65 and over or with health conditions. There may also be impacts on younger age groups
- likely increased demand on all health and social care services
- internal temperatures in care settings (hospitals and care homes) may exceed recommended threshold for clinical risk assessment
- the heat affecting the ability of the workforce to deliver services
- indoor environments overheating increasing the risk to vulnerable people living independently in community and care settings
- issues managing medicines
- staffing issues due to external factors (for example, affecting transport)
- increased demand for power exceeding capacity
- other sectors starting to observe impacts (for example, travel delays)



Click here to download a booklet 'Beat the heat: staying safe in hot weather'



The Great Whitnash Litter Pick

A huge thank you to all the staff, children and families who joined us for our community litter pick. Your hard work helped make a real difference to our local area. It was wonderful to see so many people coming together to care for our community and environment, with over 34 families taking part!

We are so grateful for everyone who gave their time and energy to help keep our neighbourhood clean and tidy.

Thank you again for your support — we hope to see you at our next event!



In other news ...

Walk to School Week

Year 6 completing their booklet



Year 6 Singing After SATs





THE JUNGLE BOOK

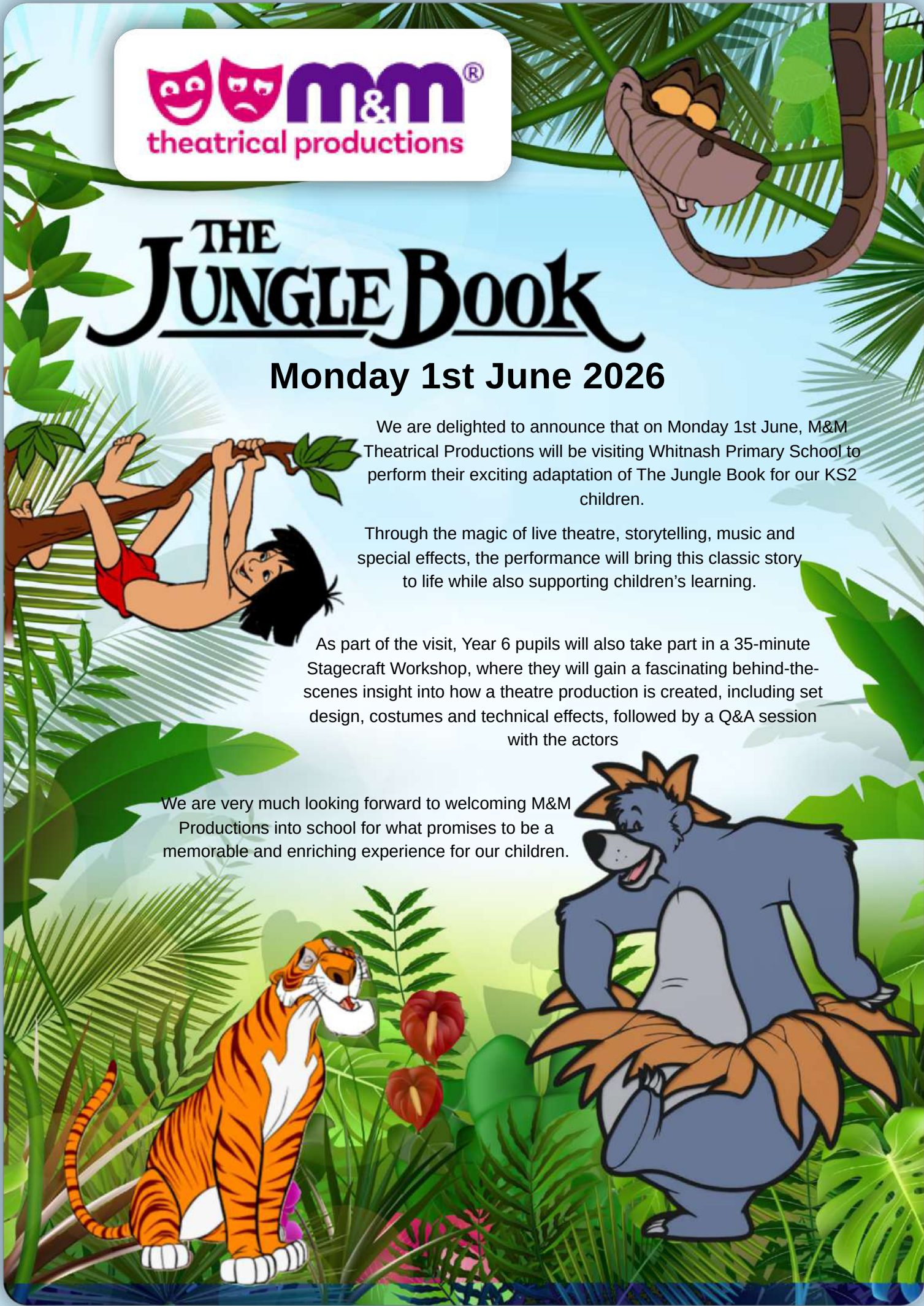
Monday 1st June 2026

We are delighted to announce that on Monday 1st June, M&M Theatrical Productions will be visiting Whitnash Primary School to perform their exciting adaptation of The Jungle Book for our KS2 children.

Through the magic of live theatre, storytelling, music and special effects, the performance will bring this classic story to life while also supporting children's learning.

As part of the visit, Year 6 pupils will also take part in a 35-minute Stagecraft Workshop, where they will gain a fascinating behind-the-scenes insight into how a theatre production is created, including set design, costumes and technical effects, followed by a Q&A session with the actors

We are very much looking forward to welcoming M&M Productions into school for what promises to be a memorable and enriching experience for our children.





Read for your school

Take part in our
Ready, Steady... Read!

from 08/06/26 to 14/06/26

Get sponsored, get reading
and see what you
can achieve

In partnership with
USBORNE





Science, Technology, Engineering & Maths

Do you enjoy solving problems, spotting patterns, experimenting, or creating new things? This week's STEM challenge is designed to get you thinking like a scientist, technologist, engineer or mathematician!

Take on the challenge, test your skills, and have fun exploring the world of STEM. Don't forget to document your work - snap pictures, record your answers and add them to your learning log. You can also email them to the class email address to share your discoveries.

Summer 1 - 22.05.26

Maths Challenge

Key Stage 1

Key Stage 2

A bus has 2 floors. The bus driver can fit 10 people on the first floor and 20 people on the second floor.

How many people can he fit on the bus altogether?

When you get on the bus, the top floor is full so you sit downstairs. There are 4 other people with you.

How many people are sat downstairs?

At the next stop, 5 people get on but none gets off.

Can everyone fit on the bus?



Carla and Sophie are playing a game.

They roll 2 dice and multiply the numbers together.

They then check all the dice they've rolled to see if they have any with the same result.

If they do, they shout 'snap'.

Are there any pairs of dice that would result in 'snap'?



25 Years Service



We want to say congratulations to Mrs Bowyer, who received her 25 years long service award for Warwickshire.

Mrs Bowyer started Whitnash Primary School in 1999 when there were only approximately 120 pupils. We now have 410! She has definitely seen a lot of changes over the years.

We thank you, Mrs Bowyer, for your continued hard work and commitment to Whitnash Primary School.



A Proud Moment

I don't often get to have a 'proud moment'. However Grace has achieved that for me.

About 12 months ago I ran an after school crochet club, of which Grace was a member. They all started with the basics. However, Grace picked this up and ran with it. I received an email this week showing me her latest completed project and

I have to say:

I am so proud of you Grace.

I think you will agree she has become a very talented crocheter.

This is amazing, well done!

(slipper shot has been included to show the size comparison)

From Miss Hall



Great job!





Collection Day!

Our School is raising money by collecting reusable clothes on:

03 July 2026

Please use the bags provided, and feel free to add extra bags if you need to!

Thank you!

By donating your unwanted, reusable clothes and accessories, you're helping turn them into affordable clothing for others around the world.

What can I recycle?

STOP and think would you wear it?

X No Thank You!

- POOR QUALITY ITEMS SUCH AS DIRTY, WET, RIPPED OR SOILED CLOTHING.
- UNIFORM
- SOCKS
- PILLOWS
- DUVETS
- CURTAINS
- BOOKS OR CD'S

Yes Please!

- CLEAN, GOOD QUALITY, DRY REUSABLE CLOTHING
- ADULTS, CHILDREN'S & BABIES CLOTHING
- PAIRED SHOES AND FOOTWEAR
- JEWELLERY AND ACCESSORIES
- BELTS AND HANDBAGS



Little Sips BIG ADVENTURES

Dear parent/guardian,

As you may be aware your child's school has a milk scheme, administered by Cool Milk. Mid-morning milk provides a much-needed nutritional boost and keeps children hydrated between breakfast and lunch. Children receive free milk until the age of 5. After that, they can continue to reap the benefits of fresh mid-morning milk at a subsidised* cost.

If you'd like to opt in and have not already done so, simply register your child at www.coolmilk.com/register. Your child(ren) will continue to receive free milk whilst under the age of 5 and Cool Milk will get in touch with further information by email shortly before their 5th birthday.

For children who are already over 5, it's not too late – our scheme is flexible! As well as being able to register and make payment straight away, you can join and cancel the scheme at any time. We offer yearly, termly and half termly payment periods and a recurring payment option to give you one less thing to remember.

If you already have an online Cool Milk account for a sibling, you can manage your account, make payment and add extra children by logging in at www.coolmilk.com/parents.

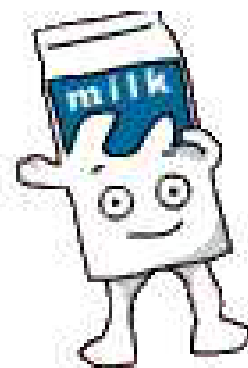
Should you have any questions or need any help, send us a message at www.coolmilk.com/contact or give us a call on the number listed below – we're here to help!

Kind regards,

Cool Milk

☎: 0800 321 3248

🌐: www.coolmilk.com



SCAN TO REGISTER

*Milk for under-5s is fully funded by DHSC via the Nursery Milk Scheme. Milk for over-5s is subsidised by Defra via the School Milk Scheme.

PE Days

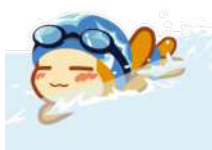
Here are the days allocated to each class for PE. Please keep checking this list, as it can change, however, you will be notified via the class teacher if this happens.

Please ensure that children wear the correct PE kit, suitable for both indoor and outdoor lessons and playtimes.

White T-shirt with navy/black shorts. Navy/black tracksuit or joggers and sweatshirt/hoodie.

All PE kit should be plain or has the school badge on it. Brand logos are permitted but must be small. Other colours and football shirts may not be worn.

Please ensure that the correct swimming kit is brought into school on your child's allocated swimming day.



Don't forget to put your child's name in their PE kit.

Class	PE Day
Holly & Ivy	Wednesday
Hazel	Wednesday & Thursday
Hawthorn	Wednesday & Friday
Pine	Monday & Friday
Cedar	Monday & Friday
Maple	Monday & Wednesday
Sycamore	Wednesday & Thursday
Juniper	Tuesday (swimming) & Friday
Chestnut	Friday
Ash	Tuesday & Wednesday
Elm	Tuesday & Wednesday
Oak	Wednesday & Thursday
Rowan	Wednesday & Thursday

Do you qualify for FREE SCHOOL MEALS?

Reasons to apply

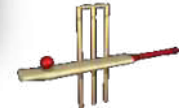
Even if your child is currently receiving free school meals because they are in Reception, Year 1 or Year 2, you should still apply for benefits-related FSM if you think you may be eligible.



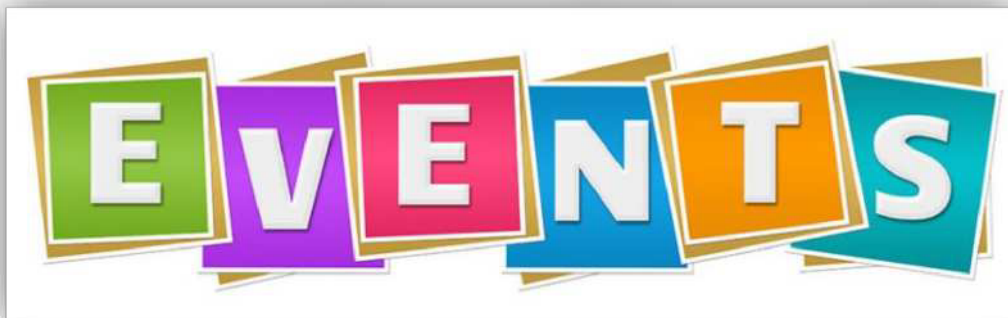
Doing so means that our school will be given extra funding for six years, which can help to fund valuable teaching and learning support for the school. Applying for benefits-related FSM also means you will be eligible to receive funding for the holiday periods from the Warwickshire Local Welfare Scheme.

You can apply for benefits-related FSM at any time online
warwickshire.gov.uk/education-learning/apply-free-school-meals





Children's Clubs and



The following pages are filled with information of things to do, things to see for you and your children in and around Warwickshire.





#SALUTEOURFORCES

Saturday 27 June 2026



I'm supporting

ARMED FORCES DAY

FREE Community Event

Free activities & food for children - hot dogs, burgers and ice creams*
Free Indian vegetarian food (Sikh Langar)*

Paid food & drink vendors | Music from Vintage Celine Rose
Military reenactors, tanks & vehicles | Military heritage village

Stalls and exhibitions from the Royal Navy, British Army and Royal Air Force
Find out more about a career in the military

Opening Parade by Standard Bearers, cadets, serving personnel and veterans

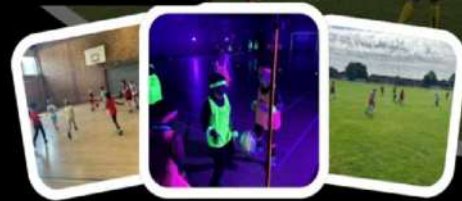
Saturday 27 June, 11am to 4pm
Pump Room Gardens,
Leamington Spa, CV32 4AA



For further information visit: warwickdc.gov.uk/armedforcesday



NEW Venue!!!



MAY HALF TERM!!!

2 CAMPS @ ONE NEW VENUE

FOOTBALL & MULTISPORT CAMP ON ONE SITE

Tuesday 26th May - Thursday 28th May

09:30-15:00

**Wraparound available
08:30-15:30**

Boys and Girls Year 1 - 8

Oakley School,
Quercus Way, CV33 9QE

emma.pheasey@leamingtonfc.co.uk



Onside
Coaching
Reception to Yr 6

Unlock the Fun This May Half Term!

from only
£24
per day
or save money **4 days for £84**



Tuesday 26th
to Friday 29th May

Times
9.30am to 3.30pm

Early Drop off 8.30 - 9.30am
Late Pick up 3.30 - 4.30pm

+£3.50
each

WE ACCEPT CHILDCARE VOUCHERS &
TAX-FREE CHILDCARE search 'Onside Wraparound'

Ofsted
Registered

to book visit btkidsclub.onsidelive.co.uk



May Half Term
Tuesday 26th to Friday 29th May

May Half Term

Football & Active Kids

Fun, active and flexible
holiday childcare for ages 5-11



At **Stratford School**
and **Aylesford School**

TIMES 9.30am to 3.30pm

Early Drop off and late pick up available +£3.50 each

NOW ONLY
£18
per day

4 days for **£68**

Childcare vouchers accepted

BOOK NOW AT onsidecoaching.co.uk



GOGO MAKERS
INSPIRING YOUNG MINDS TO THINK BIG!

* A new movie world every day!

LIGHTS CAMERA ACTION!

AWARD-WINNING, MULTI-ACTIVITY HOLIDAY CAMPS

GOGO minis	GOGO CREW JNRs	GOGO CREW SNRs
RECEPTION	5-7 YEARS	8-11 YEARS
GO GO CREATORS ART	CRAFT CLUB ART	CR8TIVE'S ART
GO GO EINSTEINS STEM	SCIENCE LAB STEM	MAD SCIENCE STEM
GO GO ACTIVE SPORTS	ACTION STATIONS SPORTS	SPORT SKILLZ SPORTS
GO GO GROOVERS DANCE	SHINING STARS DANCE	DANCE STEP UP
	TEAM GAMES	BATTLE SESSIONS GAMES

Ofsted

★★★★★ RATED 5 STARS ON GOOGLE

MAY HALF TERM
TUESDAY 26TH UNTIL FRIDAY 29TH MAY

LOCATIONS
KENILWORTH WARWICK GATES
WARWICK LEAMINGTON SPA

PRICES & TIMINGS

STANDARD DAY (9AM - 3.30PM)	£34.50
EARLY DROP OFF (8AM ONWARDS)	+£4.50
LATER COLLECTION (3.30PM - 5.30PM)	+£5.50

WE ACCEPT TAX FREE CHILDCARE & CHILDCARE VOUCHERS
10% OFF ADDITIONAL SIBLING: SIBLING10

FOLLOW OUR SOCIALS FOR MORE DISCOUNTS & OFFERS!
/GoGoMakers/ @go_go_makers

HOW TO BOOK & FIND OUT MORE
www.gogomakers.co.uk | 01926 350024

Debutots
Imagination takes you everywhere...

Summer Camps

Our unique storytelling and drama holiday camps are fun, exciting and very popular! Each child has the opportunity to increase their confidence and develop their creative expression in a fun, relaxed, secure and nurturing environment.

"William described Debutots camps as the 'funnest' thing in the whole galaxy!"

Book your space now!

"You run the most organised and caring programme we have experienced thus far. It's a pleasure feeling to know that your child is in that environment, thank you!"

Kiera Klair
01926 800872
kiera@debutots.co.uk

Exciting News!

Debutots Holiday Clubs are coming to Warwick and Leamington! See what your child can get up to this Summer with our first Summer Holiday Camp...

Award winning interactive storytelling and dramatic play classes that are unique, original and fun!

At Debutots, we bring stories to life through interactive storytelling, drama and imaginative play. Our sessions are designed to build confidence, communication and creativity while supporting the EYFS and KS1 national curriculum.

Every session encourages children to join in, move, explore and use their imagination in a fun and engaging environment.

What makes our Summer Camps Different?

Our Summer Camps offer a slightly different experience, combining the magic of Debutots storytelling with a wider range of themed activities, games crafts and creative play.

These longer sessions give children the opportunity to build friendships, grow in confidence and enjoy an exciting holiday experience filled with imagination, movement and fun!

Interested in booking your child in for a summer of fun? Click the button below to book!

[Book Week 1 Here](#)

[Book Week 2 Here](#)



PLACES KIDS EAT FREE (OR FOR £1) MAY HALF TERM 2026



moneysavingcentral.co.uk/kids-eat-free

ANGUS STEAKHOUSE

Kids under 8 eat FREE daily, 12pm to 5pm

ASDA

Kids eat for £1 daily, with no adult spend

ASK ITALIAN

2 Kids eat free 27th March - 19th April 2026

BELLA ITALIA

Children eat free Sunday - Thursday

BEEFEATER & BREWERS FAYRE

2 Kids Eat Free Breakfast with 1 paying adult

BILLS

Kids eat free Mon 25th - Fri 29th May 2026

BREWDOG

Kids eat free 23rd - 31st May 2026

CAFE ROUGE

Kids Eat FREE 12-4pm every day of the week

CHIQUITO

Kids eat free during all school holidays

COCONUT TREE

Kids eat free during half terms

DOBBIES GARDEN CENTRES

Kids eat for £1 with an adult meal purchase

FARMHOUSE INNS

Kids eat FREE from 25th - 29th May 2026

FLAMING GRILL PUBS

Kids eat FREE from 25th - 29th May 2026

FRANKIE & BENNY'S

Kids eat FREE during school holidays

FRANCO MANCIA

Kids eat FREE school holidays Mon-Thurs

FUTURE INNS

Under 5s eat for free with any adult meal

GORDON RAMSEY RESTAURANTS

Kids under 10 eat FREE all day, every day

HUNGRY HORSE

Kids eat for £1 from 25th to 29th May 2026.

IKEA

Kids get a meal from 95p daily from 11am

LAS IGUANAS

Kids under 12 eat FREE via the App

MARCO PIERRE WHITE

Kids under 12 Eat FREE daily with an adult spend

MORRISONS

Kids Eat FREE all day, every day with a £5 spend

PAUSA CAFE @ DUNELM

Kids eat FREE with every £4 spend all day

PIZZA HUT

Kids Eat Free Every Day after 3pm

PREMIER INN

2 kids eat for free with 1 adult breakfast

PRETO

Kids up to age 10 eat free with 1 paying adult

PREZZO

Kids up to age 12 eat for £1 during half terms

PUREZZA

Kids under 10 get free pizza with every adult meal

SA BRAINS PUBS

Kids eat for £1 on Wednesdays

SIZZLING PUBS

Kids eat for £1. Every Monday to Friday, 3 - 7pm

TABLE TABLE

2 Kids Eat free breakfast daily with 1 paying adult

TESCO

Kids eat free May half term with any adult spend

TGI FRIDAYS

Kids Eat Free Mon 11th - Sun 31st May (Via App)

THE REAL GREEK

Kids under 12 eat FREE Sundays with £10 spend

TRAVELODGE

2 kids eat for free with 1 adult breakfast

TURTLE BAY

Kids eat free with every £15 adult spend via app

VILLAGE HOTELS

Kids eat free weekdays via the village app

WHITBREAD INNS

2 kids eat for FREE with 1 adult breakfast

YO! SUSHI

Kids eat free all day (weekdays) in school holidays

ZIZZI

Kids eat free via app during school holidays





Family Support

The following pages contain lots of information for parent/family support.





KING EDWARD VI SCHOOL
SHAKESPEARE'S SCHOOL

The Sunday Times
State Secondary
School of the Decade

OPEN MORNING

SATURDAY 27TH JUNE 2026 9.00AM - 12 NOON



Current Year 5 students and their parents are invited to attend this Open Morning for Year 7 Entry in September 2027. You will be given an opportunity to look around the School and meet staff and students and gain a flavour of what a K.E.S. education has to offer.

Please also visit our website at www.kes.net/admissions for our Virtual School Experience.

The Headmaster will speak at 9.15am and 10.15am in the Levi Fox Hall

"King Edward VI school is a rich and vibrant community. Pupils thrive at this school" OFSTED

Chapel Lane, Stratford-upon-Avon, Warwickshire, CV37 6BE

t: 01789 293351 e: office@kes.net

w: www.kes.net

Regrettably there will be no parking available on the School site.



Clothing

Growth Spurt Ready?

SAVE 10% ON THE NEXT SIZE UP

Use code: MAY26



Click here to Save 10%

May Half Term

Timetable

25th - 29th May 2026

Monday

We are closed on 25th May 2026

Tuesday

Lillington Library

Tiny Tales

(from birth to on the move)

Sensory story time

9.30-10.30am

Booking is essential

Kingsway

Baby Chatter Matters

(for 5 months to on the move)

11.30-12.30pm

Booking is essential

Lillington

Home Education Parent Led Group

1.30-3.30pm

Booking is essential

Wednesday

Westgate

Family Time

10-11.30am

Baby Chatter Matters

(for 5 months to on the move)

12-1pm

Booking is essential

Leamington Library

Tiny Tales

(from birth to on the move)

Sensory story time

12-1pm

Booking is essential

Kenilworth Library

Tiny Tales

(from birth to on the move)

Sensory story time

2-3pm

Booking is essential

Lillington

Time Together - Spring Crafts

for age 5-11 with parents -

SIBLINGS WELCOME

10-11.30am

&

12.30-2pm



Thursday

Kingsway

Family Time

9.30-11am

Westgate

Baby Time

10-11.30am

Friday

Lillington

Baby Chatter Matters

(for 5 months to on the move)

10-11am

Booking is essential

Family Time

12-1.30pm

Chapter House, St Margaret's Church

Family Time

10-11.30am

Speech Concern?

Please contact Helen on

07703 381764 or

helen.keaney@barnardos.org.uk

- To book onto:
- Baby Chatter Matters
 - Home Ed. Group
 - Tiny Tales
- Scan me:



NO NEED TO BOOK onto most of our Baby, Family Time sessions. Please note our sessions do have limited spaces. When we are full, we can not have any more families in the room for safety reasons. If there are any changes, we will inform you on our Website and Facebook page.

BARNARDOS

Changing childhoods.
Changing lives.



June - July Timetable

1st June - 17th July
2026

No sessions
on 14th July

Barnardo's Warwick District Children and Family Centres

Email: warwickdistrictcfc@barnardos.org.uk

<https://instagram.com/warwickcfc/>

<https://www.facebook.com/warwickchildrenscentres/>

<https://coventryandwarwickshire.barnardos.org.uk/children-and-family-centres/warwick/>



Monday

Lillington

Postnatal Fitness Class
for families
9.30-10.30am

Tiny Tales

Booking is essential
(from birth to on the move)
Sensory story time

Warwick Library

12.45-1.45pm

Whitnash Civic Centre

1.30-2.30pm

8th June

Lillington

Table Treasure - for sale
with Baby play zone
12.30-4pm

New and nearly new toys,
books, clothing
Entry fee: £1/ adult

Sell with us!

Book a table -
call Helen:
07703 381764

Tuesday

Kenilworth Scout & Guide Centre

Baby Time

9.30-11am

Lillington Library

Tiny Tales

(from birth to on the move)
Sensory story time
9.30-10.30am

Chapter House

St Margaret's Church

Family Time
10-11.30am

Kingsway

Baby Chatter Matters
(for 5 months to on the move)
11.30-12.30pm

Lillington

Home Education
Parent Led Group
1.30-3.30pm

Kingsway

Time Together After school club
for age 5-11 with parents -
SIBLINGS WELCOME
Until 30th June
3.30-4.30pm

Wednesday

Lillington

Family Time

10-11.30am

Kingsway

Family Time

10-11.30am

Westgate

Baby Time

10-11.30am

Family Time

11am-12.30pm

Baby Chatter Matters

(for 5 months to on the move)
2-3pm

Booking is essential

Tiny Tales

Booking is essential
(from birth to on the move)
Sensory story time

Leamington Library

12-1pm

Kenilworth Library

1.30-2.30pm

Myton Gardens Primary School

Family Time
2-3.30pm

Thursday

Kingsway

Baby Time

9.30-11am

Family Time

1.30-3pm

Westgate

Family Time

9.30-11am

Jephson Gardens

Family Time

9.30-11am

Not on 25th June

Leamington Library

Baby Chatter Matters

(for 5 months to on the move)
1.30-2.30pm

Booking is essential



Friday

Lillington

Baby Time

9.30-11am

Family Time

2.30-4pm

Radford Semele Community Hall

Family Time

10.30am-12pm

Kenilworth Library

Baby Chatter Matters

11am-12pm

Booking is essential

Saturday

Lillington

GOGOMAKERS

Saturday Club

Drop & go session

For children aged
5-11 year olds

10-11.30am

on 6th & 20th June

Booking is essential

Family Time in the garden

10-11.00am

13th & 27th June

11th July

NEW

Baby self-weigh facility - Drop in

Kingsway CFC

Fridays 9.30-11.30am

Lillington CFC

Thursdays 2.30-4.30pm

Westgate CFC

Mondays 2-4pm

To book onto:

- Baby Chatter Matters
- Tiny Tales
- Saturday Club
- Home Ed. Group
- Time Together -After school club

Scan me:



NO NEED TO BOOK onto most of our Baby, Family
Time & Baby self-weigh facility sessions. Please
note our sessions do have limited spaces. When we
are full we can not have any more families in the
room for safety reasons. If there are any changes
we will inform you on our Website and Facebook

Speech Concern?
Please contact Helen on
07703 381764 or
helen.keaney@barnardos.org.uk



Changing childhoods.
Changing lives.



Barnardo's Warwickshire Children and Family Centres

A coordination of services for families with children and young
people aged 0-19 and up to age 25 with SEND

To improve outcomes and life chances for all children, young people (pre-birth to 19 or 25 for those with Special Educational Needs and/or Disabilities) and their families
with a particular focus on the 1001 critical days, from conception until age 2.

Advice and Support

Our staff are on hand to provide
information and signposting on a
wide range of issues for families, for
example: Baby/Toddler, Sleep,
Breastfeeding, Children's Behaviour,
Speech and Language, Finance,
Benefits, Debts, Housing and the
Home environment, SEND and
childcare funding.

Interested in **volunteering with us?**
Please contact:
sally.hesselworth@barnardos.org.uk

Warwick District Children and Family Centres and Outreach Venues:

Chapter House
St Margaret's Church
Church Close
Whitnash
CV31 2HJ

Civic Centre
Arce close
Whitnash
CV31 2ND

**Kenilworth
Scout & Guide Centre**
Fishponds Road
Kenilworth
CV8 1EY

**Myton Gardens
Primary School**
Fusilier way
Warwick
CV34 8DU

Kingsway C&FC
Baker Avenue
Leamington Spa
CV31 3HB
01926 336793

**Radford Semele
Community Hub**
68 Lewis Rd.
Royal Leamington Spa
CV31 1UQ

Lillington C&FC
3 Mason Avenue
Lillington
CV32 7QE
01926 887597

Jephson Gardens
Glasshouse entrance
Leamington Spa
CV32 4AA

Westgate C&FC
Bowling Green Street
Warwick
CV34 4DD
01926 490629

NEW Library Tiny Tale sensory sessions -
for addresses scan:



Partner & Agency Contact Details

Early Help Family Support

Family Support Workers
Call 01926 412412
www.warwickshire.gov.uk/childrenandfamilies

Family Information Service

Providing information, advice and
one-to-one support for families
Call: 01926 742274

Email: fis@warwickshire.gov.uk
www.warwickshire.gov.uk/fis

Warwickshire Child and Family Wellbeing Service (Health Visiting)

For any enquires please call: 0300 2470072
Email: wcfw.contact@hrcgcaregroup.com
www.warwickshirechildandfamily.co.uk
ChatHealth text service: 07520 615293
9am-4.30pm, Monday to Friday

Breastfeeding Counselling at

Lillington CFC: 07906 959632 - Lisa

Midwifery

Midwives - Bluebell Clinic @ Warwick Hospital
01926 495321 Ext: 6974 or 6977
diamondmidwiferypractice@swft.nhs.uk
Early Breastfeeding Support Team: 01926 626529

Health Visiting Drop In Clinics at C&FC

Kingsway CFC: 2nd & 4th Monday of the month 9.30-11.30am
Lillington CFC: 1st & 3rd Wednesday of the month 9-11am
Westgate CFC: 2nd & 4th Tuesday of the month 9.30-11am

Other Useful Contact Details

Act on Energy: Email: advice@actonenergy.org.uk Call: 0800 988 2881
Adult & Community Learning: Email: ac@warwickshire.gov.uk Call: 01926 736392
Citizens Advice: Monday to Friday - 9am-5pm. Call 0800 250 5715
Refuge's Domestic Violence and Abuse Service Warwickshire: Call: 0800 408 1552
Warwick District Foodbank: Call: 07850 293383. www.warwickdistrict.foodbank.org.uk
SENDIASS: Email: warwickshiresendiass@barnardos.org.uk Call: 01789 593 159



Changing childhoods.
Changing lives.





Tuesday 12 May 2026

This week's Family Information Service newsletter includes information about:

STEM Careers Day
Pop-up family festival
Registration for 11+ test

and much more!

[Click here for Newsletter](#)

SEND PARENT/CARER SUPPORT GROUP

With the Brunswick Hub team members Laura and Georgia

Group or one to one support

Supporting with but not limited to:

- DLA and benefits
- EHCP and education
- Housing Support
- Employment Support
- Health and Wellbeing
- SEND support

Every Wednesday

1pm-2:30pm

At the Lillington Children's Centre

3 Mason Avenue,
Leamington Spa
CV32 7QE



For more information contact:

Laura - 07356123171 or Georgia - 07923230579

SEND Support Group

Come and join us!

If you have any worries or concerns surrounding SEND please come and have a chat with us!

Meet with other parents/carers in similar positions.

We can help with a wide range of concerns.

Running on the third Thursday of every month 10am-12pm at the Brunswick Hub.

Contact us:

Georgia.mansell@brunswickhlc.org.uk
Megantownsend@brunswickhlc.org.uk

NHS Talking Therapies

Living well with Long-term Physical Health Conditions

Talking Therapies offers support to patients who have been recently diagnosed or living with a physical health condition.

- Are you worried about your health?
- Does your health get you down?
- Do you feel embarrassed or frustrated by your health condition?
- Do you feel your health holds you back in life?



If yes, all of these are normal responses that can be difficult to manage, but Talking Therapies can help. We work with conditions that include, but are not limited to:



Diabetes, Respiratory conditions, Cardiac problems and Chronic pain

Register with us today for an initial appointment online, by phone or by speaking with your GP. Talking Therapies works with people aged 16-plus, who are registered with a GP, across the Coventry and Warwickshire area.



for anxiety and depression

Telephone: 024 7667 1090

Lines are open from 9:00am to 4:30pm Monday to Friday

Visit www.talkingtherapies.covwarkpt.nhs.uk or scan the QR code for more information.



HOLIDAY ACTIVITIES AND FOOD



HAF

Any young person aged 4 - 16 years old (in full-time education) who receives benefits-related free school meals can request a HAF code



The programme offers free support to families on lower incomes, giving eligible young people access to enriching activities and healthy meals during the main school holidays.

You can attend up to 4 sessions during Christmas and Easter and up to 16 sessions over Summer



The activities available include sports, animal care, performing arts and so much more!



Contact the Family Information Service for more information.

Call 0800 408 1558 Email fis@warwickshire.gov.uk



www.warwickshire.gov.uk/haf



FREE SCHOOL MEALS



School meals are free for lots of families, check if you are eligible to apply!

So much more than lunch...

A free school meal:

- creates healthy eating habits
- improves learning and behaviour
- saves money and time
- helps schools get extra funding

Did you know that claiming free school meals means that your child will get access to free school holiday activities and food?



To find out more and for help to apply for free school meals, please contact: freemeals@warwickshire.gov.uk or call 01926 359189



Can I apply?

Your child could be eligible for free school meals if you get any of the following:

- Income Support or Jobseeker's Allowance
- Income-related Employment and Support Allowance
- Support from National Asylum Support Service (NASS)
- Guarantee Pension Credit
- Child Tax Credit (with no Working Tax Credit) with an annual income of no more than £16,190
- Working Tax Credit run-on - paid for four weeks after you stop qualifying for Working Tax Credit
- Universal Credit - if you apply on or after 1 April 2018 your household income must be less than £7,400 a year (after tax and not including any benefits you get)

You should still apply if your child is aged 4-7 and receives a universal free school meal

Find out more and apply at www.warwickshire.gov.uk/fsm



educaterers®

caring is our secret ingredient

FREE
SCHOOL
MEALS



UNIVERSAL INFANT FREE SCHOOL MEALS - IS MY CHILD ELIGIBLE?

If you have a child in Reception or Key Stage 1, your child is entitled to a free lunch everyday. By offering so much great choice, we're confident your child will find a meal combination they enjoy from our menu to help them develop and excel during school time.

Please contact your child's school for more information.



TOP 5 facts about our lunch.

Fact 1

We are school meal specialists serving over 100,000 meals every week.

Fact 2

At least 75% of our menu is freshly prepared everyday by our professional kitchen teams.

Fact 3

All our staff are trained in allergy awareness to provide menu advice and support for customers with food allergies and intolerances.

Fact 4

We work with NHS dietetics teams across the region to support customers with special dietary needs.

Fact 5

Most importantly, we love what we do and we are always on a mission to create fun at lunchtime.

OUR INGREDIENTS



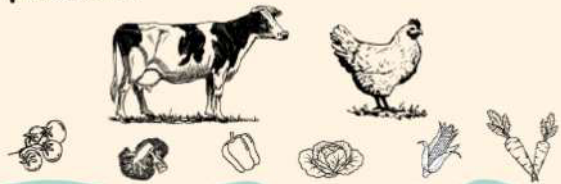
IT ALL BEGINS WITH OUR PASSION FOR
FANTASTIC FOODS!

When we source our ingredients, we seek out trusted suppliers to provide the freshest, most nutritious and highest quality produce possible.

Our suppliers put sustainability, animal welfare and ethical trading at the heart of their businesses. As a result, we know with confidence, the food we serve is wholesome, safe and fully traceable.

Dairy - Yoghurt is made on site reducing plastic packaging going into landfill

Baked Goods - Bread is freshly baked on site everyday. All our cakes and biscuits are homemade, we don't use any packet mixes.



Join Our TEAM

Are you passionate about food?

Could you help us serve healthy lunches to local school children?

Would you like to work school hours, term time only?

Then why not join one of our friendly school based teams? Full training package offered with opportunities for career progression.

Find us on Facebook at Educaterers Join Our Team or via the link on our website.



Educaterers.co.uk



Special Menus Coming Up

educaterers
caring is our secret ingredient

WORLD OCEAN DAY
MONDAY 8TH JUNE 2026

'Under the Sea' Fish Finger Wrap & Lemon Mayonnaise with Diced Potatoes (G.F.E)
or
(vg)(h) 'Sea Bed' Shell Pasta with Crusty Bread (G)

Served with Broccoli, Carrots or Sea Garden Salad

(v)(h) Blueberry 'Ocean Swirl' Muffin (G.D.E)
or
(vg) Tropical 'Coral Reef' Fruit

Allergen Free alternatives are also available

Allergens
H-Homemade
G-Gluten
D-Dairy
F-Fish
E-Egg
VG-Vegan
V-Vegetarian

Let's come together to safeguard our oceans, ensuring they remain vibrant and full of life for years to come.



WIMBLEDON TENNIS

THURSDAY 9TH JULY 2026

(h) Chicken Shawarma Wrap (G)
or
(v) Cheese & Potato Pasty (G.D.E)

Served with Seasoned Wedges, Sweetcorn or Green Salad

(v)(h) Strawberry Slice (G)
or
(vg) Summer Strawberry Fruit Salad

Allergen Free alternatives are also available

Allergens
H-Homemade
G-Gluten
D-Dairy
SB-Soya
SU-Sulphites
E-Egg
VG-Vegan
V-Vegetarian

educaterers
caring is our secret ingredient



Lunch Menu - 01 June 2026

Week Three

Allergy Key:

vg - Vegan	G - Gluten/Wheat	F - Fish
v - Vegetarian	C - Celery	M - Mustard
h - Homemade	S - Sesame	SU - Sulphates
D - Dairy	E - Egg	SB - Soya

MONDAY

Choose a main meal ...

- (v)(h) Macaroni Cheese with Crusty Bread (D,G)
- (vg) Plant Power Burger in a Bun with Diced Potatoes (G)
- Jacket Potato - (v) Cheese (D), Tuna (F.E) or (v) B/ Beans
- Cheddar Cheese Bap (G,D)

On the side ...

- Fresh Salad Bar
- Vegetables of the Day

For dessert ...

- (v) Strawberry Whip with Fruit (D)
- (v) Yoghurt (D,SB) or Fresh Fruit

TUESDAY

Choose a main meal ...

- (h) Beef Lasagne with Garlic Bread (G,D)
- (vg) Country Garden Vegetable Fingers with Seasoned Wedges (G)
- Jacket Potato - (v) Cheese (D), Tuna (F.E) or (v) Baked Beans
- Tuna Mayonnaise Bap (F.E,G)

On the side ...

- Fresh Salad Bar
- Vegetables of the Day

For dessert ...

- (v)(h) Apple Cookie (G,E)
- (v) Yoghurt (D,SB) or Fresh Fruit

WEDNESDAY

Choose a main meal ...

- British Roast Chicken Fillet, Yorkshire Pudding, Gravy with Roast Potatoes (D,E,G)
- (v) Plant Power Toad in the Hole with Roast Potatoes (G,E,D)
- Jacket Potato - (v) Cheese (D), Tuna (F.E) or (v) B/ Beans
- Egg Mayonnaise Bap (G,E)

On the side ...

- Fresh Salad Bar
- Vegetables of the Day

For dessert ...

- (v) Pancake with Fruit (G,E,D)
- (v) Yoghurt (D,SB) Fresh Fruit

THURSDAY

Choose a main meal ...

- Pork Hot Dog with Herby Diced Potatoes (G,SU,SB)
- (v)(h) Vegetable Curry with Rice
- Jacket Potato - (v) Cheese (D), Tuna (F.E) or (v) Baked Beans
- British Ham Soft Bap (G)

On the side ...

- Fresh Salad Bar
- Vegetables of the Day

For dessert ...

- (v)(h) Jim Jam Chocolate Brownie (G,E,D)
- (v) Yoghurt (D,SB) or Fresh Fruit

FISH

FRIDAY

Choose a main meal ...

- (msc) Salmon Fishcake with Chips (FG)
- (v) Cheese & Tomato Pizza Wedge with Chips (G,D)
- Jacket Potato - (v) Cheese (D), Tuna (F.E) or (v) Baked Beans
- British Roast Chicken Bap (G)

On the side ...

- Fresh Salad Bar
- Vegetables of the Day

For dessert ...

- (v)(h) Carrot & Orange Cookie (G)
- (vg) Jelly with Fruit
- (v) Yoghurt (D,SB) or Fresh Fruit



What's On ...

June 2026

01	Month	Month	Sports Month
01	Monday	9.45	Performance of Jungle Book to KS2
04	Thursday	tbc	Whirlwinds Formula 1 Race
08	Monday	Week	Sponsored Read Week
08	Monday	Week	Phonics Screening Week - Year 1
08	Monday	9.10	KS2 Achievement Assembly
08	Monday	Lunch	World Ocean Day Menu
09	Tuesday	tbc	Year 6 - Road Safety
09	Tuesday	tbc	IEP Parents Meetings
11	Thursday	Day	International Day of Play/PTA Cake Sale
15	Monday	9.10am	KS1 Achievement Assembly
18	Thursday	Day	Reception Trip to Ryton Pools - Mini-Beasts
22	Week	Week	Healthy Schools Week
22	Monday	9.10am	KS2 Achievement Assembly
23	Tuesday	5pm	2026/27 Reception Parents' Meet & Greet
25	Thursday	tbc	Sports Day
29	Monday	9.10am	KS1 Achievement Assembly

July 2026

02	Thursday	9.10	Music Assembly with Mr Suckling
02	Thursday	tbc	PTA Sponsored Splash
03	Friday	9am	Rags 2 Riches Collection
06	Monday	9.10am	KS2 Achievement Assembly
07	Tuesday	tbc	RSC King Lear Trip
07	Tuesday	Day	Reports to Parents
08	Wednesday	Day	Shuffle Up Day! (Transition Day)
09	Thursday	Day	Year 1 Visit Hatton Country World
09	Thursday	Lunch	Wimbolden Tennis Menu
09	Thursday	3.15	Parents' Open Evening (no appointment needed)
10	Friday	3.15	Year 6 Enterprise Sale
14	Tuesday	9am	Year 6 Performance to Parents & Leavers Assembly
16	Thursday	9.15 2.30	KS2 Achievement Assembly KS1 Achievement Assembly
17	Friday	am	Year 6 Bowling and Pizza
17	Friday	3.15	Pupils Break Up for Summer

Please note that dates are subject to change

[Download 2025/26 calendar here](#)

