



Newsletter



No. 31

admin2324@welearn365.com

head2324@welearn365.com

15 May

01926 426773

2026

www.whitnashprimaryschool.com

Well done!

YEAR 6

Fantastic



GOOD WORK

For working so hard and completing your

SATs

AWESOME!

JOB WELL DONE!



WELL-DONE!

WOW!



Dear Parents/Carers

Year 6 SATS

We want to say a huge well done to Year 6 this week. The children have undertaken their Standard Assessment Tests (SATs) over four days. We have been so impressed by their resilience and determination. As always, our children responded brilliantly to the challenge and they should be incredibly proud of what they have achieved.



Today they have had some well-deserved relaxation time. A letter has been sent to Year 6 parents to inform them of some up and coming activities Year 6 classes will be taking part in over the course of this term.

Year 2 Teacher Assessments

Year 2 pupils will also be undertaking some assessments in early June to support our Teacher Assessment grades. These assessments are part of normal classroom practice and are no longer a statutory requirement. A letter will be sent to Year 2 parents ahead of these assessments so parents know what these entail.

Smartphone Free Childhood



We just want to remind parents this week that our school opted last year to be part of the Smartphone Free Childhood initiative and banned smart phones from our school.

Children are not allowed to bring a smart phone to our school unless permission has been given for exceptional circumstances e.g. for medical App purposes

Our school strongly recommend not giving children a smartphone, in the same way we are clear that children should not have access to social media platforms that are not suitable for their age.

Year 5 and 6 children are allowed to walk or cycle to and from school independently or with friends (we ask you notify the school). Particularly for these children, some parents currently provide a phone for their child to contact them.

If parents believe their children need access to a phone, an alternative would be an old style/first phone, that can only receive and make calls or texts and not access the internet or Apps. These phones are currently permitted in school, provided they are handed into the main office each morning and collected at home time.

Any smartphones found to be brought into school will not be handed back to the child, but will be kept in the school office for parents to collect.

Children who are brought to school and collected by an adult are not allowed to bring any type of phone into school, which essentially means no child in Reception to Year 4 will be allowed a phone in school. If there is an expedient need for any younger child to walk home or require a phone, this should be discussed with the school.





We urge every parent to look at the evidence of the negative impact smartphones and social media are having on our children. The website link below provides further information. We have provided a link to a powerful short film which offers a good summary of the problem.

www.smartphonefreechildhood.org/



<https://nipinthebud.org/films-for-parents-carers/smartphones-a-stolen-childhood/#:~:text=In%20this%20podcast%20we%20discuss,social%20media%20and%20internet%20use>

We appreciate parental support and cooperation with our school approach and policy

Acre Close

This week we have been made aware of some ongoing concerns about Acre Close. As you are all aware, parents do use the Acre Close car park at collection and drop off times. However, the access to this area through the park and it's proximity to the play areas means that all users must be highly vigilant and cautious at all times to ensure the safety of park users and children.

However, it is also important that those accessing the park facilities are also respectful to those using the car park and mindful of peoples' vehicles. Whilst the school have actively championed the need for ongoing improvements at the park for these reasons, it remains the responsibility of everyone accessing these spaces to work respectfully together as a community to allow the continued safe use of this space.

When issues are raised, we strongly encourage everyone to understand each others' points of view and resolve matters respectfully. Children using the park see parental interactions and we want children to learn that conflict resolution is best achieved through polite, respectful dialogue not aggression or inappropriate language. We thank you for your ongoing support.

Walk To School Week

We're excited to announce that our school are taking part in Walk to School Week 2026! Our five day challenge starts on Monday and we are hoping children will be motivated to take part.

Pupils will be encouraged to walk, wheel, cycle, scoot or Park and Stride to school every day next week. In class our children will track their progress on a brightly coloured wallchart and earn stickers as they go along with a special bookmark reward at the end of the week. A letter has been sent home today to explain more to parents.

Wishing you all a wonderful weekend. Mrs Donna Ellison Headteacher

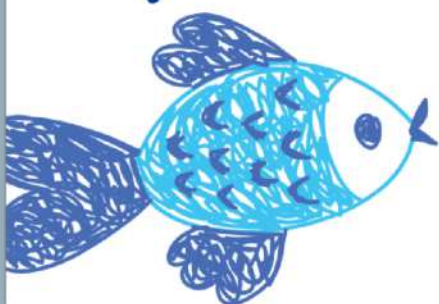
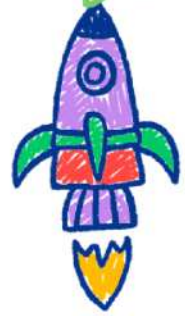
Contents

Please note that not all pages are listed here.

Please click on page number to take you directly to the page.

- 3 Attendance/Mrs Miller Says
- 4 Maths Challenge and Word Count
- 5 Year 2 Make Stuffed Peppers/Year 1 Visit the Library
- 6 STEM Challenge - Maths
- 7 Leavers Hoodies/Year 6 Leavers Book Messages
- 8 Rags & Riches Collection Date
- 10 Allocated PE Days/Do You Qualify For Free School Meals?
- 11 Clubs & Community Events
- 13 Family Support Information
- 19 Special Menus Coming Up
- 20 Menu
- 21 What's On?

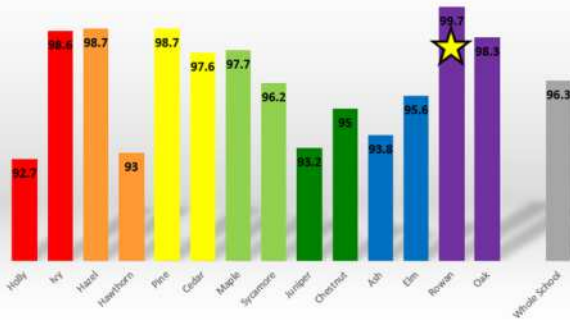
COMING
SOON



Attendance

Well Done Rowan

Attendance 11-15 May 2026



We want to remind parents and carers of the importance of getting children to school on time, so that they do not miss their learning.

We would also like to remind parents and carers that you need to call the absence line each morning that your child is absent, before 9am with their symptoms or reason for absence. You can also email

admin2324@welearn365.com

Thank you for your co-operation.

Miss Emma Lindon
Attendance Champion



Children MUST be in the school building before 9.00am for registration. Doors will be closed at this time and if children have missed this, they will need to be brought to the office by parents/carers to ensure that we have them marked as present in school and to make sure they have their lunches ordered. If this does not happen, it runs the risk of the office not knowing children are in class and they will not be ordered a lunch.

LATE CHILDREN MUST BE ACCOMPANIED BY THEIR PARENT/CARER SO THEY CAN SIGN THEM IN AND NOT LEFT TO ENTER ON THEIR OWN.



Mrs Miller Says ...

All classes

Please can we remind all parents that if your child requires any form of medication during the school day, this must be brought to the school office by an adult and paperwork completed.

School Photos

Photo proofs have been sent home this week, please remember to order online by 26th May 2026. Instructions are detailed on the packs.

Reception

As the children turn 5, they are no longer entitled to free milk during the school day. If you would like them to still receive this, please see page 11 of the newsletter.

Years 3-6

Please remember to pack your child a healthy snack to eat at break time. This should be either a piece of fruit or vegetable.

Year 6

Please remember that all hoodies must be paid for before 21st May.

Reminder that if your child is late to school for any reason and require a school lunch, this must be emailed or called through to the school office before 9.30am



We are a NUT FREE school

As we have several pupils with severe nut allergies, please do not send your child in with ANY nuts, or products containing nuts. **This does include sesame seeds.**

Please clearly label all cardigans, jumpers, PE kit, hoodies and coats.





TIMES TABLES ROCKSTARS



100 Club Challenge

The most accurate class		CHESTNUT
The most active class		MAPLE
The most active pupils:	Class	Average minutes per day
Doruk	Chestnut	15:43
Neithan	Chestnut	7:31
Olivia	Sycamore	5:08

Number Bonds 5	Number Bonds 10	Number Bonds 20	x 2	x 5	x 10	10
		Matilda Mason Elizabeth Ronnie Emili	Delia Olivia Isabelle Oliver		Vivaswath	
20	30	40	50	60	70	80
	Lily	George		Naomi	Malachi Shreeya	Jaya
90	Bronze	Silver	Gold	Platinum	Diamond	Pearl
Advita Reansh Maria	Damien Eva	Kira	Sapphire			

Word Count



Class	Words Read	Total	Quizzes passed this week	Total number of quizzes passed	Weekly Boom Reader Total
Holly	N/A	N/A	N/A	N/A	9
Ivy	N/A	N/A	N/A	N/A	6
Hawthorn	N/A	N/A	N/A	N/A	23
Hazel	N/A	N/A	N/A	N/A	21
Cedar	19,783	493,502	28	448	6
Pine	83,084	679,488	15	227	9
Maple	15,042	2,352,288	23	1026	9
Sycamore	1,089	1,172,999	2	817	9
Chestnut	534,416	7,886,555	35	912	4
Juniper	73,104	1,992,869	46	800	6
Ash	101,184	5,647,838	7	312	3
Elm	442,488	8,368,969	10	528	12
Rowan	93,226	14,188,602	5	779	7
Oak	361,704	16,292,711	11	642	1
Totals	1,725,120	59,075,821	182	6,491	125

Word Count Winners
CHESTNUT

Top Quizzers
JUNIPER

BOOMREADERS
HAWTHORN

We say well done to Elm, for achieving their 8 million words, Oak for achieving their 16 million words - Fabulous! We say congratulations to Brooke in Juniper for achieving her Bronze raccoon award - well done! There are lots of children who are close to getting their Bronze award - lots of 47's and 48's.

I wonder how many will achieve it next week!





Eco Council

Community Litter Pick



The Eco Council would like to invite all families to take part in our upcoming **Community Litter Pick!**



This is a fantastic opportunity for children, parents and carers to work together to help care for our local environment and make our community a cleaner, greener place. The litter-picking route has been planned by the Eco Council, who will proudly lead the event.



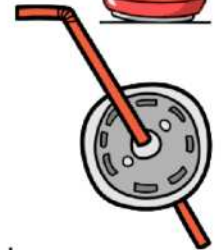
Date: Wednesday 20th May 2026



Time: 3:15pm – 4:30pm



Meeting Point: Gazebo on the main playground (for a quick safety briefing)



Everyone is welcome to join us after school. Children must be accompanied by a parent or carer, who will remain responsible for them during the event.



Litter pickers and bag hoops will be provided. If you want to wear gloves, please bring your own pair of gardening grade gloves if you have them.



Thank you for supporting our Eco Council and helping us make a positive difference in our local area. We hope to see lots of families there! 🌱♻️





Read for your school



Take part in our

Ready, Steady... Read!

from 08/06/26 to 14/06/26

Get sponsored, get reading
and see what you
can achieve



In partnership with
USBORNE





Science, Technology, Engineering & Maths

Do you enjoy solving problems, spotting patterns, experimenting, or creating new things? This week's STEM challenge is designed to get you thinking like a scientist, technologist, engineer or mathematician!

Take on the challenge, test your skills, and have fun exploring the world of STEM. Don't forget to document your work - snap pictures, record your answers and add them to your learning log. You can also email them to the class email address to share your discoveries.

Summer 1 - 15.05.26

Engineering Challenge

Key Stage 1

Key Stage 2

DESIGN & BUILD A CAR

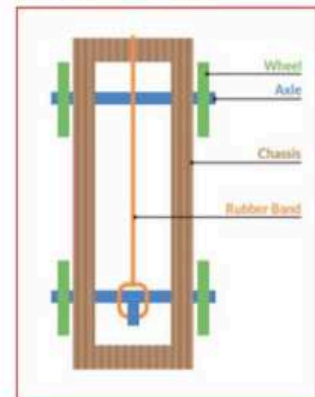


Race it : Design and Build a Rubber Band Powered Car

The Challenge: Build a car using basic materials from around the house and make it go using an elastic band.

Suggested Materials

- plastic lids or cardboard circles for wheels
- pencils, lollipop sticks, half of an empty juice carton for the chassis (the frame of the car)
- skewers, straws or toothpicks for the axles
- toothpick or cardboard for the tab on the rear axle
- elastic band (or some loom bands joined together)



Once you have built your car using the design here as a basic guide, wind up the elastic band using the back wheels, then set it down and let it go.

Troubleshooting:

If your wheels spin but the car doesn't move then there may not be enough grip or friction between the wheel and the floor. Real cars have rubber wheels for this purpose. So you could try making the wheels less smooth (wrap a small elastic band around them or give them grooves like a real tyre). You could also try adding some weight to the wheels by sticking blutack or playdough to them.

ALTERNATIVELY you could build your car from Lego bricks (using the same basic frame and design) but with lego wheels.





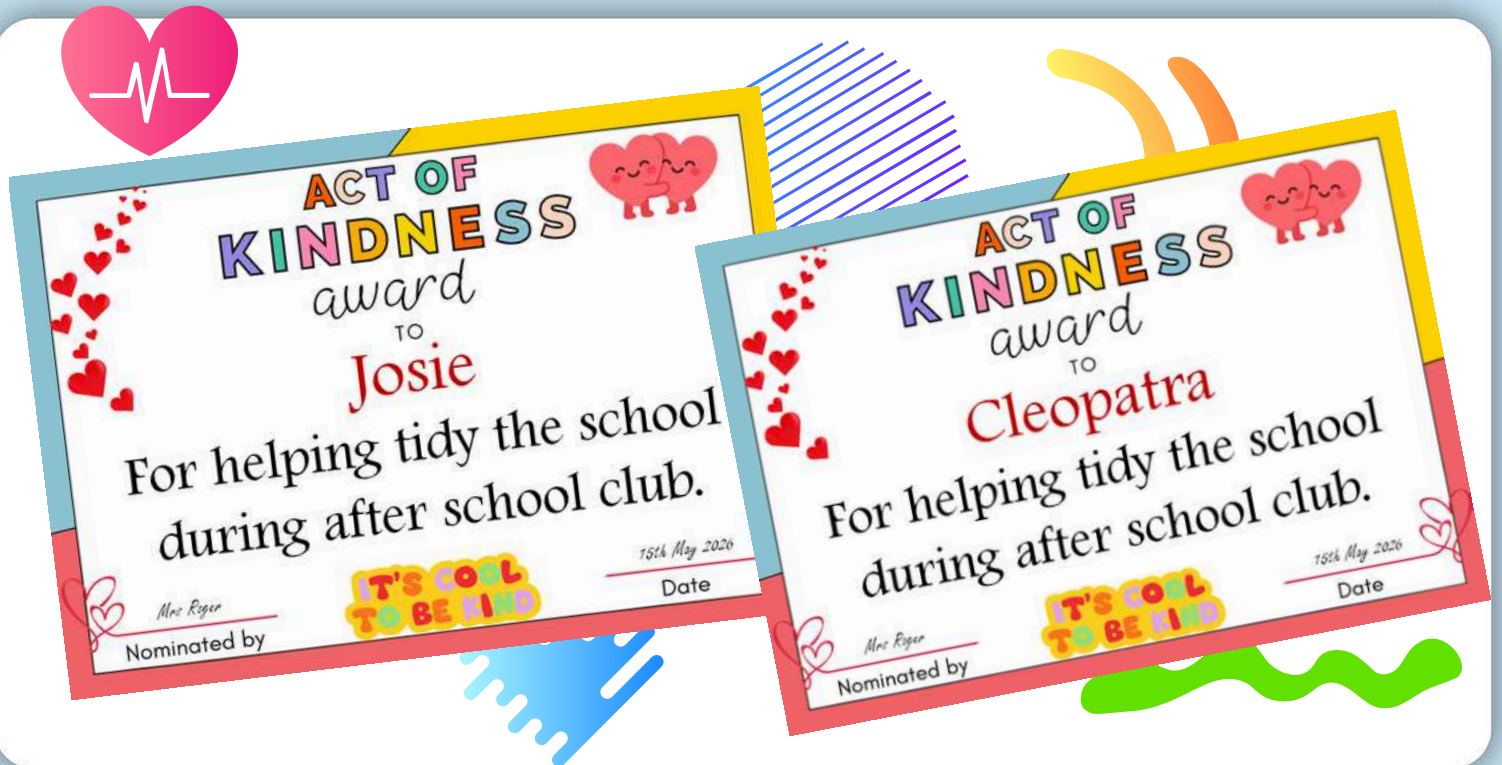
CHAMPIONS



Holly & Ivy Classes Walk To School Week

During Walk to School Week, our Reception children will be talking about the different ways they travel to school, encouraging them to walk to school with an adult at least once during the week, and revisiting the road safety rules they learned with Warwick Bear.

Children who walk to school will receive a sticker each day, and those who take part at least once during the week will receive a certificate at the end of the week.



Year 6 Leavers Book

I am in now in the process of creating the Year 6 leavers book.

If you would like to add a message, please email me at

hall.j3@welearn365.com

Thank you - Miss Hall





Collection Day!

Our School is raising money by collecting reusable clothes on:

03 July 2026

Please use the bags provided, and feel free to add extra bags if you need to!

Thank you!

By donating your unwanted, reusable clothes and accessories, you're helping turn them into affordable clothing for others around the world.

What can I recycle?

STOP and think would you wear it?

No Thank You!

- POOR QUALITY ITEMS SUCH AS DIRTY, WET, RIPPED OR SOILED CLOTHING.
- UNIFORM
- SOCKS
- PILLOWS
- DUVETS
- CURTAINS
- BOOKS OR CD'S

Yes Please!

- CLEAN, GOOD QUALITY, DRY REUSABLE CLOTHING
- ADULTS, CHILDREN'S & BABIES CLOTHING
- PAIRED SHOES AND FOOTWEAR
- JEWELLERY AND ACCESSORIES
- BELTS AND HANDBAGS



Little Sips BIG ADVENTURES

Dear parent/guardian,

As you may be aware your child's school has a milk scheme, administered by Cool Milk. Mid-morning milk provides a much-needed nutritional boost and keeps children hydrated between breakfast and lunch. Children receive free milk until the age of 5. After that, they can continue to reap the benefits of fresh mid-morning milk at a subsidised* cost.

If you'd like to opt in and have not already done so, simply register your child at www.coolmilk.com/register. Your child(ren) will continue to receive free milk whilst under the age of 5 and Cool Milk will get in touch with further information by email shortly before their 5th birthday.

For children who are already over 5, it's not too late – our scheme is flexible! As well as being able to register and make payment straight away, you can join and cancel the scheme at any time. We offer yearly, termly and half termly payment periods and a recurring payment option to give you one less thing to remember.

If you already have an online Cool Milk account for a sibling, you can manage your account, make payment and add extra children by logging in at www.coolmilk.com/parents.

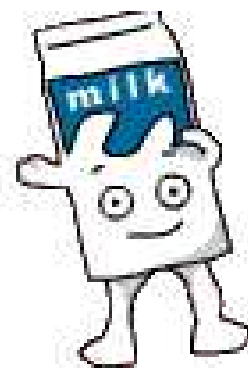
Should you have any questions or need any help, send us a message at www.coolmilk.com/contact or give us a call on the number listed below – we're here to help!

Kind regards,

Cool Milk

☎: 0800 321 3248

🌐: www.coolmilk.com



SCAN TO REGISTER

*Milk for under-5s is fully funded by DHSC via the Nursery Milk Scheme. Milk for over-5s is subsidised by Defra via the School Milk Scheme.

PE Days

Here are the days allocated to each class for PE. Please keep checking this list, as it can change, however, you will be notified via the class teacher if this happens.

Please ensure that children wear the correct PE kit, suitable for both indoor and outdoor lessons and playtimes.

White T-shirt with navy/black shorts. Navy/black tracksuit or joggers and sweatshirt/hoodie.

All PE kit should be plain or has the school badge on it. Brand logos are permitted but must be small. Other colours and football shirts may not be worn.

Please ensure that the correct swimming kit is brought into school on your child's allocated swimming day.



Don't forget to put your child's name in their PE kit.

Class	PE Day
Holly & Ivy	Wednesday
Hazel	Wednesday & Thursday
Hawthorn	Wednesday & Friday
Pine	Monday & Friday
Cedar	Monday & Friday
Maple	Monday & Wednesday
Sycamore	Wednesday & Thursday
Juniper	Tuesday (swimming) & Friday
Chestnut	Friday
Ash	Tuesday & Wednesday
Elm	Tuesday & Wednesday
Oak	Wednesday & Thursday
Rowan	Wednesday & Thursday

Do you qualify for FREE SCHOOL MEALS?

Reasons to apply

Even if your child is currently receiving free school meals because they are in Reception, Year 1 or Year 2, you should still apply for benefits-related FSM if you think you may be eligible.



Doing so means that our school will be given extra funding for six years, which can help to fund valuable teaching and learning support for the school. Applying for benefits-related FSM also means you will be eligible to receive funding for the holiday periods from the Warwickshire Local Welfare Scheme.

You can apply for benefits-related FSM at any time online
warwickshire.gov.uk/education-learning/apply-free-school-meals





Children's Clubs and



The following pages are filled with information of things to do, things to see for you and your children in and around Warwickshire.





#SALUTEOURFORCES

Saturday 27 June 2026



I'm supporting

ARMED FORCES DAY

FREE

Community Event

Free activities & food for children - hot dogs, burgers and ice creams*

Free Indian vegetarian food (Sikh Langar)

Paid food & drink vendors Music from Vintage Celine Rose

Military reenactors, tanks & vehicles Military heritage village

Stalls and exhibitions from the Royal Navy, British Army and Royal Air Force

Find out more about a career in the military

Opening Parade by Standard Bearers, cadets, serving personnel and veterans

Saturday 27 June, 11am to 4pm
Pump Room Gardens,
Leamington Spa, CV32 4AA



For further information visit: warwickdc.gov.uk/armedforcesday



M Clothing

Growth Spurt Ready?

SAVE 10% ON THE NEXT SIZE UP

Use code: **MAY26**



Click here to Save 10%



Onside
Coaching
Reception to Yr 6

Unlock the Fun This May Half Term!

from only
£24
per day

or save money **4 days for £84**



Tuesday 26th to Friday 29th May

Times
9.30am to 3.30pm

Early Drop off 8.30 - 9.30am +£3.50 each
Late Pick up 3.30 - 4.30pm

WE ACCEPT CHILDCARE VOUCHERS & TAX-FREE CHILDCARE search 'Onside Wraparound'

Ofsted
Registered

to book visit btkidsclub.onsidelive.co.uk

Onside
Coaching

May Half Term
Tuesday 26th to Friday 29th May

May Half Term

Football & Active Kids

Fun, active and flexible holiday childcare for ages 5-11



At **Stratford School** and **Aylesford School**

TIMES 9.30am to 3.30pm

Early Drop off and late pick up available +£3.50 each

NOW ONLY
£18
per day

4 days for **£68**

Childcare vouchers accepted

BOOK NOW AT onsidecoaching.co.uk



LIGHTS CAMERA ACTION!

AWARD-WINNING, MULTI-ACTIVITY HOLIDAY CAMPS

GO GO minis	GO GO CREW JNRs	GO GO CREW SNRs
RECEPTION	5-7 YEARS	8-11 YEARS
GO GO CREATORS ART	CRAFT CLUB ART	CR8TIVE'S ART
GO GO EINSTEINS STEM	SCIENCE LAB STEM	MAD SCIENCE STEM
GO GO ACTIVE SPORTS	ACTION STATIONS SPORTS	SPORT SKILLZ SPORTS
GO GO GROOVERS DANCE	SHINING STARS DANCE	DANCE STEP UP DANCE
	TEAM GAMES	BATTLE SESSIONS GAMES

Ofsted

★★★★★ RATED 5 STARS ON GOOGLE

MAY HALF TERM

TUESDAY 26TH UNTIL FRIDAY 29TH MAY

LOCATIONS

KENILWORTH WARWICK GATES
WARWICK LEAMINGTON SPA

PRICES & TIMINGS

STANDARD DAY (9AM - 3.30PM)	£34.50
EARLY DROP OFF (8AM ONWARDS)	+£4.50
LATER COLLECTION (3.30PM - 5.30PM)	+£5.50

WE ACCEPT TAX FREE CHILDCARE & CHILDCARE VOUCHERS

10% OFF ADDITIONAL SIBLING: SIBLING10

FOLLOW OUR SOCIALS FOR MORE DISCOUNTS & OFFERS!

Facebook: /GoGoMakers/ Instagram: @go_go_makers

HOW TO BOOK & FIND OUT MORE

www.gogomakers.co.uk | 01926 350024



Looking for things to do in the holidays - follow this link to find out what's on in Warwickshire Country Parks

<https://countryparks.warwickshire.gov.uk/activities>



Family Support

The following pages contain lots of information for parent/family support.



Barnardo's Warwick District Children and Family Centres

Email: warwickdistrictcfc@barnardos.org.uk
<https://instagram.com/warwickcfc/>

<https://www.facebook.com/warwickchildrenscentres/>

<https://coventryandwarwickshire.barnardos.org.uk/children-and-family-centres/warwick/>

May

May Half Term
 Timetable
 25th-29th May 2026

Wednesday

Westgate
 Family Time
 10-11.30am

Baby Chatter Matters
 (for 5 months to on the move)
 12-1pm
Booking is essential

Leamington Library
Tiny Tales
 (from birth to on the move)
 Sensory story time
 12-1pm
Booking is essential

Kenilworth Library
Tiny Tales
 (from birth to on the move)
 Sensory story time
 2-3pm
Booking is essential

Lillington
 Time Together- Spring Crafts
 for age 5-11 with parents -
 SIBLINGS WELCOME
 10-11.30am
 &
 12.30-2pm



Thursday

Kingsway
 Family Time
 9.30-11am

Westgate
 Baby Time
 10-11.30am



Friday

Lillington
Baby Chatter Matters
 (for 5 months to on the move)
 10-11am
Booking is essential
 *
 Family Time
 12-1.30pm

Chapter House
St Margaret's Church
 Family Time
 10-11.30am



To book onto:
 • Baby Chatter Matters
 • Home Ed. Group
 • Tiny Tales
 Scan me:



Speech Concern?
 Please contact Helen on
 07763 381764 or
helen.keaney@barnardos.org.uk



Changing childhoods.
 Changing lives.



Monday

We are closed
 on 25th May 2026

Tuesday

Lillington Library
Tiny Tales
 (from birth to on the move)
 Sensory story time
 9.30-10.30am
Booking is essential

Kingsway
Baby Chatter Matters
 (for 6 months to on the move)
 11.30-12.30pm
Booking is essential

Lillington
Home Education
Parent Led Group
 1.30-3.30pm
Booking is essential



NO NEED TO BOOK onto most of our **Baby, Family, Time sessions**. Please note our sessions do have limited spaces. When we are full, we can not have any more families in the room for safety reasons. If there are any changes, we will inform you on our Website and Facebook page.

Barnardo's Warwickshire Children and Family Centres

A coordination of services for families with children and young people aged 0-19 and up to age 25 with SEND



To improve outcomes and life chances for all children, young people (pre-birth to 19 or 25 for those with Special Educational Needs and/or Disabilities) and their families with a particular focus on the 1001 critical days, from conception until age 2.

Advice and Support

Our staff are on hand to provide information and signposting on a wide range of issues for families, for example: Baby/Toddler, Sleep, Breastfeeding, Children's Behaviour, Speech and Language, Finance, Benefits, Debts, Housing and the Home environment, SEND and childcare funding.

Interested in **volunteering with us?**
 Please contact:
sally.hesselworth@barnardos.org.uk

Warwick District Children and Family Centres and Outreach Venues:

Chapter House
St Margaret's Church
 Church Close
 Whitnash
 CV31 2HJ

NEW

Library Tiny Tale sensory sessions - for addresses scan:

Kingsway C&FC
 Baker Avenue
 Leamington Spa
 CV31 3HB
 01926 336793



Lillington C&FC
 3 Mason Avenue
 Lillington
 CV32 7QE
 01926 887597

Westgate C&FC
 Bowling Green Street
 Warwick
 CV34 4DD
 01926 490629

Partner & Agency Contact Details

Early Help Family Support

Family Support Workers
 Call 01926 412412
www.warwickshire.gov.uk/childrenandfamilies

Family Information Service

Providing information, advice and one-to-one support for families
 Call: 01926 742274
 Email: fis@warwickshire.gov.uk
www.warwickshire.gov.uk/fis

Warwickshire Child and Family Wellbeing Service (Health Visiting)

For any enquires please call: 0300 2470072
 Email: wcfw.contact@hrcrgcaregroup.com
www.warwickshirechildandfamily.co.uk
 ChatHealth text service: 07520 615293
 9am-4.30pm, Monday to Friday

Midwifery

Midwives - Bluebell Clinic @ Warwick Hospital
 01926 495321 Ext.: 6974 or 6977
diamondmidwiferypractice@swft.nhs.uk
Early Breastfeeding Support Team: 01926 626529

Health Visiting Drop In Clinics at C&FC

Kingsway CFC: 2nd & 4th Monday of the month 9.30-11.30am
Lillington CFC: 1st & 3rd Wednesday of the month 9-11am
Westgate CFC: 2nd & 4th Tuesday of the month 9.30-11am

Other Useful Contact Details

Act on Energy: Email: advice@actonenergy.org.uk Call: 0800 988 2881
Adult & Community Learning: Email: ac@warwickshire.gov.uk Call: 01926 736392
Citizens Advice: Monday to Friday - 9am-5pm. Call 0800 250 5715
Refuge's Domestic Violence and Abuse Service Warwickshire: Call: 0800 408 1552
Warwick District Foodbank: Call: 07850 293383. www.warwickdistrict.foodbank.org.uk
SENDIASS: Email: warwickshiresendiass@barnardos.org.uk Call: 01789 593 159



Baby Time

A relaxed environment where parents can socialise and babies (crawlers and pre-walkers) can explore.

Chatter Matters™

Structured session to support early communication through fun, interactive activities.

Family Time

Ideal for families with children on the move to socialise and learn through play. All siblings welcome.

Stepping Stones

Nurturing session to support early communication through fun, interactive activities. If you think this is better for you and your child, please contact:
karen.chin@barnardos.org.uk



Tuesday 12 May 2026

This week's Family Information Service newsletter includes information about:

STEM Careers Day
Pop-up family festival
Registration for 11+ test

and much more!

[Click here for Newsletter](#)

SEND PARENT/CARER SUPPORT GROUP

With the Brunswick Hub team members Laura and Georgia

Group or one to one support

Supporting with but not limited to:

- DLA and benefits
- EHCP and education
- Housing Support
- Employment Support
- Health and Wellbeing
- SEND support

Every Wednesday

1pm-2:30pm

At the Lillington Children's Centre

3 Mason Avenue,
Leamington Spa
CV32 7QE



For more information contact:

Laura - 07356123171 or Georgia - 07923230579

SEND Support Group

Come and join us!

If you have any worries or concerns surrounding SEND please come and have a chat with us!
Meet with other parents/carers in similar positions.
We can help with a wide range of concerns.

Running on the third Thursday of every month 10am-12pm at the Brunswick Hub.

Contact us:

Georgia.mansell@brunswickhlc.org.uk
Megantownsend@brunswickhlc.org.uk

NHS Talking Therapies

Living well with Long-term Physical Health Conditions

Talking Therapies offers support to patients who have been recently diagnosed or living with a physical health condition.

- Are you worried about your health?
- Does your health get you down?
- Do you feel embarrassed or frustrated by your health condition?
- Do you feel your health holds you back in life?



If yes, all of these are normal responses that can be difficult to manage, but Talking Therapies can help. We work with conditions that include, but are not limited to:



Diabetes, Respiratory conditions, Cardiac problems and Chronic pain

Register with us today for an initial appointment online, by phone or by speaking with your GP. Talking Therapies works with people aged 16-plus, who are registered with a GP, across the Coventry and Warwickshire area.



for anxiety and depression

Telephone: 024 7667 1090

Lines are open from 9:00am to 4:30pm Monday to Friday

Visit www.talkingtherapies.covwarkpt.nhs.uk or scan the QR code for more information.



HOLIDAY ACTIVITIES AND FOOD



HAF

Any young person aged 4 - 16 years old (in full-time education) who receives benefits-related free school meals can request a HAF code



The programme offers free support to families on lower incomes, giving eligible young people access to enriching activities and healthy meals during the main school holidays.



You can attend up to 4 sessions during Christmas and Easter and up to 16 sessions over Summer

The activities available include sports, animal care, performing arts and so much more!



Contact the Family Information Service for more information.

Call 0800 408 1558 Email fis@warwickshire.gov.uk



www.warwickshire.gov.uk/haf



FREE SCHOOL MEALS



School meals are free for lots of families, check if you are eligible to apply!

So much more than lunch...

A free school meal:

- creates healthy eating habits
- improves learning and behaviour
- saves money and time
- helps schools get extra funding

Did you know that claiming free school meals means that your child will get access to free school holiday activities and food?



To find out more and for help to apply for free school meals, please contact: freemeals@warwickshire.gov.uk or call 01926 359189



Can I apply?

Your child could be eligible for free school meals if you get any of the following:

- Income Support or Jobseeker's Allowance
- Income-related Employment and Support Allowance
- Support from National Asylum Support Service (NASS)
- Guarantee Pension Credit
- Child Tax Credit (with no Working Tax Credit) with an annual income of no more than £16,190
- Working Tax Credit run-on - paid for four weeks after you stop qualifying for Working Tax Credit
- Universal Credit - if you apply on or after 1 April 2018 your household income must be less than £7,400 a year (after tax and not including any benefits you get)

You should still apply if your child is aged 4-7 and receives a universal free school meal

Find out more and apply at www.warwickshire.gov.uk/fsm



educaterers®

caring is our secret ingredient

FREE
SCHOOL
MEALS



UNIVERSAL INFANT FREE SCHOOL MEALS - IS MY CHILD ELIGIBLE?

If you have a child in Reception or Key Stage 1, your child is entitled to a free lunch everyday. By offering so much great choice, we're confident your child will find a meal combination they enjoy from our menu to help them develop and excel during school time.

Please contact your child's school for more information.



TOP 5 facts about our lunch.

Fact 1

We are school meal specialists serving over 100,000 meals every week.

Fact 2

At least 75% of our menu is freshly prepared everyday by our professional kitchen teams.

Fact 3

All our staff are trained in allergy awareness to provide menu advice and support for customers with food allergies and intolerances.

Fact 4

We work with NHS dietetics teams across the region to support customers with special dietary needs.

Fact 5

Most importantly, we love what we do and we are always on a mission to create fun at lunchtime.

OUR INGREDIENTS



IT ALL BEGINS WITH OUR PASSION FOR
FANTASTIC FOODS!

When we source our ingredients, we seek out trusted suppliers to provide the freshest, most nutritious and highest quality produce possible.

Our suppliers put sustainability, animal welfare and ethical trading at the heart of their businesses. As a result, we know with confidence, the food we serve is wholesome, safe and fully traceable.

Dairy - Yoghurt is made on site reducing plastic packaging going into landfill

Baked Goods - Bread is freshly baked on site everyday. All our cakes and biscuits are homemade, we don't use any packet mixes.



Join Our TEAM

Are you passionate about food?

Could you help us serve healthy lunches to local school children?

Would you like to work school hours, term time only?

Then why not join one of our friendly school based teams? Full training package offered with opportunities for career progression.

Find us on Facebook at Educaterers Join Our Team or via the link on our website.



Educaterers.co.uk



Special Menus Coming Up



World Bee Day

Wednesday 20th May 2026

"When we protect the bees, we protect our future."

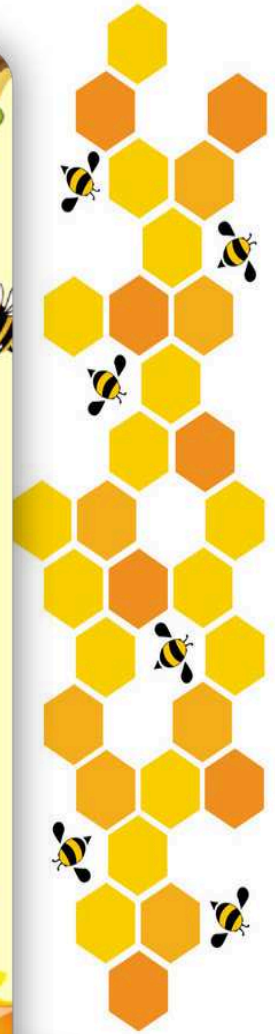
(h) 'Beehive' Meatball & Cheese Pasta (G.D) with Crusty Bread
or
(v)(h) Vegetable Quesadilla with Honey & Yoghurt Dip and Potato Wedges (G.D.SB)

Served with Broccoli 'Pollinator Power Trees' or Vegetable Sticks with a 'Bee' Dip

(v)(h) Honey Crispy Bar (G)
or
(v) Vanilla Bee-nilla Ice Cream (D)

Allergen Free alternatives are also available

Allergens:
H-Homemade
G-Gluten
D-Dairy
SB-Soya
SU-Sulphites
E-Egg
VG-Vegan
V-Vegetarian



WORLD OCEAN DAY

MONDAY 8th JUNE 2026

'Under the Sea' Fish Finger Wrap & Lemon Mayonnaise with Diced Potatoes (G.F.E)
or
(vg)(h) 'Sea Bed' Shell Pasta with Crusty Bread (G)

Served with Broccoli, Carrots or Sea Garden Salad

(v)(h) Blueberry 'Ocean Swirl' Muffin (G.D.E)
or
(vg) Tropical 'Coral Reef' Fruit

Let's come together to safeguard our oceans, ensuring they remain vibrant and full of life for years to come.

Allergen Free alternatives are also available

Allergens:
H-Homemade
G-Gluten
D-Dairy
F-Fish
E-Egg
VG-Vegan
V-Vegetarian

educaterers®
caring for our secret ingredients

WIMBLEDON TENNIS

THURSDAY 9th JULY 2026

(h) Chicken Shawarma Wrap (G)
or
(v) Cheese & Potato Pasty (G.D.E)

Served with Seasoned Wedges, Sweetcorn or Green Salad

(v)(h) Strawberry Slice (G)
or
(vg) Summer Strawberry Fruit Salad

Allergen Free alternatives are also available

Allergens:
H-Homemade
G-Gluten
D-Dairy
SB-Soya
SU-Sulphites
E-Egg
VG-Vegan
V-Vegetarian

educaterers®
caring for our secret ingredients



Lunch Menu - 18 May 2026

Week Two

Allergy Key:

vg - Vegan	G - Gluten/Wheat	F - Fish
v - Vegetarian	C - Celery	M - Mustard
h - Homemade	S - Sesame	SU - Sulphates
D - Dairy	E - Egg	SB - Soya

MONDAY

Choose a main meal ...

British Pork Sausages & Gravy with Mashed Potato (G,SB,SU,D)

(v)(h) Chinese Style Quorn with Noodles (E)

Jacket Potato - (v) Cheese (D), Tuna (F,E) or (v) B/ Beans
Tuna Mayonnaise Bap (F,E,G)

On the side ...

Fresh Salad Bar

Vegetables of the Day

For dessert ...

(vg)(h) Chocolate Shorbread with Orange Wedge (G)

(v) Yoghurt (D,SB) or Fresh Fruit

TUESDAY

Choose a main meal ...

(h) British Beef Bolognaise with Garlic Bread (G)
Cheese (D)

(v) Crispy Quorn Dippers with Rainbow Rice (G)

Jacket Potato - (v) Cheese (D), Tuna (F,E) or (v) Baked Beans

(v) Egg Mayonnaise Bap (G,E)

On the side ...

Fresh Salad Bar

Vegetables of the Day

For dessert ...

(v)(h) Lemon Drizzle Cake (G,E)

(v) Yoghurt (D,SB) or Fresh Fruit

WEDNESDAY



World Bee Day



THURSDAY

Choose a main meal ...

(v) Cheese & Tomato Pizza Wedge with Herby Diced Potatoes (G,D)

(v)(h) Vegetable Pie, Gravy, Herby New Potatoes (G)

Jacket Potato - (v) Cheese (D), Tuna (F,E) or (v) Baked Beans

(v) Cheddar Cheese Bap (G,D)

On the side ...

Fresh Salad Bar

Vegetables of the Day

For dessert ...

(v) Strawberry Whip with Fruit (D)

(v)(h) Crunch Cookie (G)

(v) Yoghurt (D,SB) or Fresh Fruit

FISH

FRIDAY

Choose a main meal ...

(msc) Battered Fish Fillet with Chips (F,G)

(v)(h) Cheesy Omelette with Chips (E,D)

Jacket Potato - (v) Cheese (D), Tuna (F,E) or (v) Baked Beans

British Roast Chicken Bap (G)

On the side ...

Fresh Salad Bar

Vegetables of the Day

For dessert ...

(v)(h) 'School Favourite' Sprinkles Sponge Cake (GE)

(v) Yoghurt (D,SB) or Fresh Fruit



What's On ...

May 2026

18	Week	Week	Walk to School Week
18	Monday	9.10am	KS1 Achievement Assembly
19	Tuesday	1.30	Singing After SATS
20	Wednesday	Lunch	World Bee Day Menu
20	Wednesday	After School	Community Litter Pick Day
22	Friday	3.15	Break up for Half-Term
25-29	Week	Week	Half-Term

June 2026

01	Month	Month	Sports Month
04	Thursday	tbc	Whirlwinds Formula 1 Race
08	Monday	Week	Phonics Screening Week - Year 1
08	Monday	9.10am	KS2 Achievement Assembly
08	Monday	Lunch	World Ocean Day Menu
08-12	Week	Week	Sponsored Read Week
09	Tuesday	tbc	Year 6 - Road Safety
09	Tuesday	tbc	IEP Parents Meetings
11	Thursday	Day	International Day of Play/PTA Cake Sale
11	Thursday	5pm	2026/27 Reception Parents' Meet & Greet
15	Monday	9.10am	KS1 Achievement Assembly
18	Thursday	Day	Reception Trip to Ryton Pools - Mini-Beasts
22	Week	Week	Healthy Schools Week
22	Monday	9.10am	KS2 Achievement Assembly
25	Thursday	tbc	Sports Day
29	Monday	9.10am	KS1 Achievement Assembly

July 2026

02	Thursday	9.10	Music Assembly with Mr Suckling
03	Friday	9am	Rags 2 Riches Collection
06	Monday	9.10am	KS2 Achievement Assembly
07	Tuesday	tbc	RSC King Lear Trip
07	Tuesday	Day	Reports to Parents
08	Wednesday	Day	Shuffle Up Day! (Transition Day)
09	Thursday	Day	Year 1 Visit Hatton Country World
09	Thursday	Lunch	Wimbolton Tennis Menu
09	Thursday	3.15	Parents' Open Evening
10	Friday	3.15	Year 6 Enterprise Sale
14	Tuesday	9am	Year 6 Performance to Parents & Leavers Assembly
16	Thursday	9.15 2.30	KS2 Achievement Assembly KS1 Achievement Assembly
17	Friday	am	Year 6 Bowling and Pizza
17	Friday	3.15	Pupils Break Up for Summer

Please note that dates are subject to change

[Download 2025/26 calendar here](#)

