

Northridge Funeral Home Ltd.

6446 Hwy 11/Box 89 Emo, Ontario, P0W 1E0

www.northridgefuneralhome.com

northridge@sympatico.ca

Telephone 807-482-3788

Fax 807-482-3816

Jason C. Lilley

President/Manager/Owner

PRICE LIST

EFFECTIVE JANUARY 1, 2020

Jason C. Lilley FD License # 201992

Northridge Funeral Home License # 772

Explanation of Services Professional & Basic Staff Services – fall into the following categories

\$250.00 - \$1500.00

Co-ordinating activities, rites, ceremonies

- Professional consultation with licensed personnel, including, but not limited to, expert advice on options to meet your needs.
- Co-ordination of all activities, rites and ceremonies, before, during and after they have been provided, including services and supplies provided by us, as well as clergy, coroners, cemetery, crematorium, soloists and organists.
- Arranging for transfer of the deceased and staff for transfer, arranging for flowers reception, extra vehicles, receiving and processing donations.
- Clerical, accounting and custodial staff and administration as set forth for licensing requirements the Funeral, Burial and Cremation (FBCSA)
- Arranging for staff to coordinate for removal, visitation and on the funeral day as well as required vehicles. We provide four staff members at every ceremony with the exception of a graveside service where only two staff members are required. We are pleased to provide a Book of Memories portal on our funeral home website - www.northridgefuneralhome.com
- General maintenance and housekeeping, municipal taxes, utilities, and insurances.

Documentation – permits, forms, etc.

\$315.00 - \$500.00

- Completion and filing of all documents necessary to carry out the services and supplies requested, including, but not limited to, death registration, burial permit, coroner's certificate for cremation, documentation necessary to ship the body out of the country.
- Provision of 12 Proofs of Death issued by Business Name (Our proof of death are usual accepted for most estate settlement purposes, but sometimes a provincial "Death Certificate" will be necessary and is available from the Office of the Registrar General)

Transport remains – initial or additional (within 100 km; additional fees apply beyond 100 km)

\$300.00

- Transportation of the remains from one place to another, for example the hospital to the business, or the business to the cemetery or crematorium, a charge applies for each transportation request. Includes pick up of cremated remains at Green Larsen Mortuary, International Falls MN USA.
- Requires the use of an unmarked van

Basic preparation of remains (requires facilities for preparation/embalming/shelter)

\$150.00

- The preparation of the body for placement into the casket/cremation container, including bathing, dressing and the setting of facial features for identification or viewing without embalming . Disinfection of equipment used for transport of remains.

\$475.00

Embalming of remains (In addition to basic preparation of remains)

- Embalming is the process of replacing blood and bodily fluids with chemical preservatives. It is a process of sanitation, restoration and temporary preservation.

Embalming is not legally required, but many be recommended to preserve the body between the time of death and visitation or disposition of the deceased. Our professional funeral directors will make a recommendation based on the condition of the body and expected service needs.

Unless otherwise identified, all prices do not include applicable taxes.

Removal of Pacemaker by the Funeral Director	\$100.00
<ul style="list-style-type: none"> When cremation takes place all crematoriums require the removal of pacemakers. 	
Facilities for preparation/embalming/shelter	\$315.00
<ul style="list-style-type: none"> Facilities used to prepare, embalm and shelter the body up to 48 hours Additional fees apply for additional days. 	
Staff Services for visitation	\$325.00
<ul style="list-style-type: none"> Staff to coordinate and oversee the visitation (informal gathering) for a period up to 4 hours. Availability of a funeral director and receptionist to assist family and friends 	
Facilities for visitation (requires Staff for visitation)	\$300.00
<ul style="list-style-type: none"> Designated facilities used for visitation for a period up to 4 hours. Availability of a funeral director and receptionist to assist family and friends. 	
Staff services for ceremony	\$325.00 – \$795.00
<ul style="list-style-type: none"> Staff to coordinate and oversee the ceremony or memorial service for up to 2.5 hours. Availability of a funeral director and three staff members. 	
Facilities for ceremony (requires Staff services for ceremony)	\$300.00
<ul style="list-style-type: none"> Designated facilities used for the ceremony or memorial service up to 2.5 hours. 	
Vehicles	
Within 100 km, additional fees apply beyond 100 km.	
➤ Clergy/Lead	\$100.00
<ul style="list-style-type: none"> Lead Car: Used for the completion of paperwork such as obtaining Coroner's Cremation Certificates, registering the death to obtain the burial/cremation permit, as well as arranging the transportation of the clergy to the funeral home or the place of service, cemetery and or leading the funeral procession to the cemetery. Also used to pick up human cremated remains after the cremation process from the crematorium at the funeral homes discretion. 	
➤ Funeral Coach	\$400.00
<ul style="list-style-type: none"> Primarily used to transport the casket, container or urn to the place of ceremony and or Cemetery. 	
➤ Service Vehicle	\$200.00
<ul style="list-style-type: none"> Available 24hrs/day and is primarily used for the transport of remains from the place of death to our facility. It is also used for delivery of floral arrangements following the service to the family home or desired location of the family. 	
➤ Additional Mileage	

- Mileage travelled beyond 100 km from the business will be charged one way only (this is a rate of \$1.00 kilometer). Only Northridge Funeral Home Ltd. Employees have driving authorization of funeral home vehicles.

Unless otherwise identified, all applicable taxes will be added to the prices indicated

Traditional Ceremony at Funeral Home with Burial/Cremation

(Up to 4 hours of Visitation with service same day or next)

Professional Service and Basic Staff Service	\$1500.00
Documentation	\$500.00
Initial Transfer of Remains from place of death	\$300.00
Basic Preparation of Remains	\$150.00
Embalming Remains	\$375.00
Facilities for Preparation, Embalming and Shelter	\$315.00
Staff Services for Visitation	\$325.00
Facilities for Visitation	\$300.00
Staff Services for Ceremony	\$795.00
Facilities for Ceremony	\$300.00
Lead/Clergy Vehicle	\$100.00
Service Vehicle	\$200.00
Funeral Coach	\$400.00
Itemized Total	\$5560.00

Unless otherwise identified, all prices do not include applicable taxes.

Traditional Ceremony at Funeral Home with Burial/Cremation

(No visitation)

Professional Service and Basic Staff Service	\$1500.00
Documentation	\$500.00
Initial Transfer of Remains from place of death	\$300.00
Basic Preparation of Remains	\$150.00
Embalming Remains	\$375.00
Facilities for Preparation, Embalming and Shelter	\$315.00
Staff Services for Ceremony	\$795.00
Facilities for Ceremony	\$300.00
Lead/Clergy Vehicle	\$100.00
Service Vehicle	\$200.00
Funeral Coach	\$400.00
Itemized Total	\$4935.00

Unless otherwise identified, all prices do not include applicable taxes.

Memorial Ceremony at Funeral Home with Cremation

(Up to 4 hours of Visitation prior to memorial)

Professional Service and Basic Staff Service	\$1500.00
Documentation	\$500.00
Initial Transfer of Remains from place of death	\$300.00
Basic Preparation of Remains	\$150.00
Facilities for Preparation, Embalming and Shelter	\$315.00
Staff Services for Visitation	\$325.00
Facilities for Visitation	\$300.00
Staff Services for Ceremony	\$795.00
Facilities for Ceremony	\$300.00
Service Vehicle	\$200.00
Itemized Total	\$4685.00

Unless otherwise identified, all prices do not include applicable taxes.

Memorial Ceremony at Funeral Home with Cremation

(No visitation)

Professional Service and Basic Staff Service	\$1500.00
Documentation	\$500.00
Initial Transfer of Remains from place of death	\$300.00
Basic Preparation of Remains	\$150.00
Facilities for Preparation, Embalming and Shelter	\$315.00
Staff Services for Ceremony	\$795.00
Facilities for Ceremony	\$300.00
Service Vehicle	\$200.00
Itemized Total	\$4060.00

Memorial Visitation with Reception

Professional Service and Basic Staff Service	\$500.00
Documentation	\$500.00
Initial Transfer of Remains from place of death	\$300.00
Basic Preparation of Remains	\$150.00
Facilities for Preparation, Embalming and Shelter	\$315.00
Staff Services for Visitation/Reception	\$325.00
Facilities for Visitation/Reception	\$300.00
Service Vehicle	\$200.00
Itemized Total	\$2,590.00

Unless otherwise identified, all prices do not include applicable taxes.

Graveside Ceremony with Burial or Cremation

Professional Service and Basic Staff Service	\$750.00
Documentation	\$500.00
Initial Transfer of Remains from place of death	\$300.00
Basic Preparation of Remains	\$150.00
Facilities for Preparation, Embalming and Shelter	\$315.00
Staff Services for Ceremony (2 staff may be required)	\$325.00
Service Vehicle	\$200.00
Coach	\$400.00
Itemized Total	\$2940.00

Unless otherwise identified, all prices do not include applicable taxes.

Immediate Cremation/Burial

No Service

Professional Service and Basic Staff Service	\$750.00
Documentation	\$500.00
Initial Transfer of Remains from place of death	\$300.00
Basic Preparation of Remains	\$150.00
Facilities for Preparation, Embalming and Shelter	\$315.00
Service Vehicle	\$200.00
Itemized Total	\$2215.00

Forwarding of Remains to another Funeral Home

Coordinating activities – forwarding	\$250.00
Registration and documentation	\$315.00
Embalming	\$375.00
Basic Preparation of Remains	\$150.00
Facilities for Preparation, Embalming and Shelter	\$315.00
Transfer of remains from place of death to funeral home, mileage charge will apply over 100 km	\$300.00
Itemized Total	\$1705.00

Unless otherwise identified, all prices do not include applicable taxes.

Receiving Remains from another Funeral Home

Coordinating activities – receiving	\$250.00
Facilities for preparation/embalming/shelter	\$315.00
Transfer of remains from forwarding funeral home to our funeral home, mileage charge will apply over 100 km	\$300.00
Itemized Total	\$865.00

Other Available Services and Equipment

Description: Use of facilities for a reception following the ceremony or memorial service, which includes the set-up of the facilities, the use of the facilities and amenities. 1.5 hours duration

Price: \$300.00

Refundable Deposit for Cremated Remains

When human remains are to be cremated, a refundable deposit will be required to be paid. If the cremated remains are not claimed within one year of the cremation, the deposit may be used to inter the cremated remains in common ground. If the cremated remains are claimed before they are interred, the deposit will be refunded

Price: \$350.00

Unless otherwise identified, all prices do not include applicable taxes.

Professional restorative procedures

In some circumstances, additional restorative efforts beyond those captured in the standard embalming procedure are necessary to enhance the appearance of the deceased. In such cases the funeral director will discuss the available options and their cost. Professional restorative procedures will be charged per hour.

Price: \$85.00

Staff to Supervise Committal Service at a later date 1.5 hours

Price: \$325.00

Refrigeration after 48 hours

Northridge Funeral Home offers refrigeration on site for families that require time to decide on arrangements.

\$100/day

Weekend or after business hours arrangements.

Funeral arrangements, visitations or funeral services arranged or conducted after normal business hours and on weekends are subject to a flat surcharge

\$150/day

Northridge Funeral Home observes all Ontario and Canadian Statutory Holidays

Stationary

Northridge Funeral Home offers individual designed memorial cards, inserts, order of services, prayer cards, thank you notes and book marks.

- Design Fee per order \$30.00
- Order of service .95 ea
- Memorial cards .60 ea
- Thank You Notes .50 ea
- Inserts for Memorial Programs .25 ea
- Register Book \$55.00 ea (includes personalization)
- Inserts for Memorial Cards .35 ea

Unless otherwise identified, all prices do not include applicable taxes.

Scanning of Photos

- CD's \$1.25/picture
- CD burning \$10.00

Book Marks

- Including laminating, colour/b/w
printed on front and back \$4.00

Unless otherwise identified, all prices do not include applicable taxes.

Rush on Cremated Remains

- Human cremated remains that are required
by the family in a "rush" and not at the funeral
home convenience or not within crematorium normal hours of business
would be subject to this charge. \$175.00

Spring Interment

- For casket burials on a Saturday \$300.00
- For Interment of cremated remains on Saturday \$250.00
- No extra fees charged for spring interment of caskets or urns completed during normal business hours Monday-Friday.

Facility - Private family viewing prior to interment Or cremation (30 minute maximum)

Use of the facility and Staff
(Professional and Facility charge)

\$250.00

Unless otherwise identified, all prices do not include applicable taxes.

Disbursements

Disbursements are items arranged for and possibly paid for on your behalf of us. You are expected to pay for these items at the time the contract is entered into. The following are some items that are often identified as disbursements:

Paid by Northridge Funeral Home

Coroner's fee – this is a fee charged by the coroner for issuing a certificate that allows cremation to take place. The fee is set by the Chief Coroner for Ontario. \$75.00 for Cremation Fee plus \$75 for cremations not taking place in Ontario.

Clergy Honorarium – this is an amount paid to the clergy for their services. In some cases the amount is set by the clergy, in others it is an amount to be determined by you. Range \$200 - \$400.

Municipal Death Registration Fee – this is a fee charged by the local municipality to register the death. The fee is set by the municipality and may vary.

Paid by Family:

Newspaper or radio notices – these are charges for death notices placed in newspapers or radio or other media outlets. Range from \$100.00 - \$1000.00 Credit card or cheque will be required.

Cremation Fee - This fee is set by Green Larsen Mortuary/Rainy River Cremation Services. Current Rate is \$700.00 Canadian to be paid In advance by Credit Card or Cheque.

Cemetery Fees for Opening and Closing – This fee is set by individual cemeteries and final charges will be determined at the time of the funeral arrangements. Saturday surcharges will apply.

Reception Fee for Third Party Caterers - Range from \$5.00 – 10.00 per plate

Weekend surcharges may apply.

This fee is set by local churches and may change depending on food choices made by the purchaser. Payment is the responsibility of the family and final charges will be determined at the conclusion of the funeral service. Cash or cheque payment required.

Payment and Funding

Payment, at Time of Funeral Arrangements

The Purchaser agrees to pay Northridge Funeral Home Ltd. Within 30 days of signing this contract. The Purchaser acknowledges that for any unpaid balance interest will be accrued at the rate of 2% per month (24% per annum) compounded monthly until the date payment is made in full.

Any costs incurred by Northridge Funeral Home for late or deficient payments or incurred through collection will be charged to the Purchaser. Payments may be made in cash, cheque or by Visa/Master Card/American Express

Funeral accounts that are paid in full one day after the funeral contract has been signed are eligible for a discount of 5% of the total contract value.

Funding

For your convenience, we offer one funding option when prepaying services or supplies. When prepaying, you pay for the services and supplies today and the money will be used to pay for the services and supplies when they are delivered at the time of death.

Trust: You may pay the money directly to us and we will place it in trust, where it will accrue interest until the contract is fulfilled (when the services and supplies are delivered) or the contract is cancelled.

Additional information about our payment, financing and funding options is available on request.

Northridge Funeral Home Ltd. Is privately owned by Jason C. Lilley and not affiliated with any other funeral homes, cemeteries, crematorium in the Province of Ontario.

URNS

Manufacturer: Silver Prairie Urns, Alberta

Description: Porcelain Vase
Mother of Pearl Finish
Golfer Scene #20

Size: 206 Cubic Inch Capacity
Height 10"
Width 8"



Price \$400.00

Manufacturer: Silver Prairie Urns, Alberta

Description: Porcelain Vase
Mother of Pearl Finish
Mallards #72

Size: 206 Cubic Inch Capacity
Height 10"
Width 8"



Price \$400.00

Manufacturer: Silver Prairie Urns, Alberta

Description: Porcelain Vase
Mother of Pearl Finish
Floral Blue #12

Size: 206 Cubic Inch Capacity
Height 10"
Width 8"



Price \$400.00

Manufacturer: Silver Prairie Urns, Alberta

Description: Porcelain Vase
Mother of Pearl Finish
Country Rose #04

Size: 206 Cubic Inch Capacity
Height 10"
Width 8"



Price \$400.00

Manufacturer: Silver Prairie Urns, Alberta

Description: Porcelain Vase
Mother of Pearl Finish
Summer Pansy #73

Size: 206 Cubic Inch Capacity
Height 10"
Width 8"



Price \$400.00

Manufacturer: Silver Prairie Urns, Alberta

Description: Porcelain Vase
Mother of Pearl Finish
Lilacs #59

Size: 206 Cubic Inch Capacity
Height 10"
Width 8"



Price \$400.00

Manufacturer: Silver Prairie Urns, Alberta

Description: Porcelain Vase
Mother of Pearl Finish
Eagle Take Flight #103

Size: 206 Cubic Inch Capacity
Height 10"
Width 8"



Price \$400.00

Manufacturer: Silver Prairie Urns, Alberta

Description: Porcelain Vase
Mother of Pearl Finish
Humming Bird #58

Size: 206 Cubic Inch Capacity
Height 10"
Width 8"



Price \$400.00

Manufacturer: Silver Prairie Urns, Alberta

Description: Porcelain Vase
Mother of Pearl Finish
Fishing Scene #11

Size: 206 Cubic Inch Capacity
Height 10"
Width 8"



Price \$400.00

Manufacturer: Silver Prairie Urns, Alberta

Description: Porcelain Vase
Mother of Pearl Finish
Doves #08

Size: 206 Cubic Inch Capacity
Height 10"
Width 8"



Price \$400.00

Manufacturer: Silver Prairie Urns, Alberta

Description: Porcelain Vase
Mother of Pearl Finish
Grazing Horse #25C

Size: 206 Cubic Inch Capacity
Height 10"
Width 8"



Price \$400.00

Manufacturer: Silver Prairie Urns, Alberta

Description: Porcelain Vase
Mother of Pearl Finish
Moose #?

Size: 206 Cubic Inch Capacity
Height 10"
Width 8"



Price \$400.00

Manufacturer: Silver Prairie Urns, Alberta

Description: Porcelain Vase
Mother of Pearl Finish
Praying Hands #39

Size: 206 Cubic Inch Capacity
Height 10"
Width 8"



Price \$400.00

Manufacturer: Silver Prairie Urns, Alberta

Description: Porcelain Vase
Mother of Pearl Finish
Forget Me Not #66

Size: 206 Cubic Inch Capacity
Height 10"
Width 8"



Price \$400.00

Manufacturer: Silver Prairie Urns, Alberta

Description: Porcelain Vase
Mother of Pearl Finish
Cats #?

Size: 206 Cubic Inch Capacity
Height 10"
Width 8"



Price \$400.00

Manufacturer: Silver Prairie Urns, Alberta

Description: Porcelain Vase
Mother of Pearl Finish
Summer Deer #05

Size: 206 Cubic Inch Capacity
Height 10"
Width 8"



Price \$400.00

Manufacturer: Silver Prairie Urns, Alberta

Description: Porcelain Vase
Mother of Pearl Finish
Pearl Pink Floral #36

Size: 206 Cubic Inch Capacity
Height 10"
Width 8"



Price \$400.00

Manufacturer: Silver Prairie Urns, Alberta

Description: Porcelain Vase
Mother of Pearl Finish
Humming Bird #58

Size: 206 Cubic Inch Capacity
Height 10"
Width 8"



Price \$400.00

Manufacturer: Silver Prairie Urns, Alberta

Description: Porcelain Vase
Mother of Pearl Finish
Old Tractor #?

Size: 206 Cubic Inch Capacity
Height 10"
Width 8"



Price \$400.00

Manufacturer: Silver Prairie Urns, Alberta

Description: Porcelain Vase
Mother of Pearl Finish
Draft #101

Size: 206 Cubic Inch Capacity
Height 10"
Width 8"



Price \$400.00

Manufacturer: Silver Prairie Urns, Alberta

Description: Porcelain Vase
Mother of Pearl Finish
Granite #80

Size: 206 Cubic Inch Capacity
Height 10"
Width 8"



Price \$400.00

Manufacturer: Gravure Craft

Description: Carthage Brass Urn
UR-19070

Size: 200 Cubic Inch Capacity
Height 10 1/4"
Width 6 1/8"



Price \$275.00

Manufacturer: Gravure Craft

Description: Rainbow Aluminum
UR-7107

Size: 200 Cubic Inch Capacity
Height 10 3/4"
Width 6 1/8"



Price \$ 390.00

Manufacturer: Gravure Craft

Description: Green Painted Rose aluminum
#UR-7108

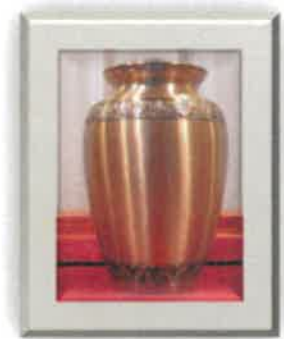
Size: 200 Cubic Inch Capacity
Height 10 5/8"
Width 6 1/8"



Price \$390.00

Manufacturer: Gravure Craft
Description: Empire Brass
UR19020

Size: 200 Cubic inches
Height 10 ¼"
Width 6 1/8"



Price \$260

Manufacturer: Bingham's
Description: Mother of Pearl Inlay Polished Brass
#B-1518A

Size: 200 Cubic Inches
Height 10 ½"



Price \$225.00

Manufacturer: Gravure Craft
Description: Eaton Brass Urn with Pewter Finish
UR19098

Size: 200 Cubic Inches
Height 11"
Width 6 ¾"



Price \$320.00

Manufacturer: Gravure Craft
Description: Green with Leaf Mother of Pearl inlay, aluminum
UR- 7106

Size: 200 Cubic Inches
Height 10 7/8"
Width 6 1/8"



Price \$390.00

Manufacturer: Gravure Craft
Description: Black with Mother of Pearl Inlay
UR-7105

Size: 200 Cubic Inches
Height 10 $\frac{3}{4}$ "
Width 6 $\frac{1}{8}$ "



Price \$390.00

Manufacturer: Gravure Craft
Description: Blue with Mother of Pearl, Tree of Life
UR-7103

Size: 200 Cubic Inches
Height 10 $\frac{3}{4}$ "
Width 6 $\frac{1}{8}$ "



Price \$390.00

Manufacturer: Patra Urns
Description: Granite Moose Motif

Size: 200 Cubic inch
Height 8"
Width 9 X4"



Price \$595.00

Manufacturer: Gravure Craft
Description: Aqua Blue Hand-Crafted Paper #UR-8001
Sustainable Produced Bio-degradable Paper

Also available in Natural Hand-Crafted paper #UR-8002

Size: 200 Cubic inch
12 $\frac{1}{2}$ X 14 X 3"



Price \$250.00

WOOD URNS

Manufacturer: Garry Halverson

Description: Wood "Mom"

Available in Ash or Walnut

Size: 200 Cubic Inches
Height 9"
Width 8"



Price \$300.00

Manufacturer: Garry Halverson

Description: Wood "Dad" #1

Available in Ash or Walnut

Size: 200 Cubic Inches
Height 9"
Width 8"



Price \$300.00

Manufacturer: Bruce James

Description: Wood "Dad"

Size: 200 Cubic Inches
Height 9"
Width 8"



Price \$325.00

Manufacturer: Gravure Craft

Description: Garden Tools 3 D Engraved Urn Oak
UR 3018

Size: 200 Cubic Inches
Height 7 ½"
Width 10 ½ X 7"



Price \$750.00

Manufacturer: Garry Halverson

Description: Wood "Old Truck" (blue background) Ash

Size: 200 Cubic Inch
Height 9"
Width 8"



Price \$300.00

Manufacturer: Garry Halverson

Description: Wood "Old Truck" (red background) Ash

Size: 200 Cubic Inch
Height 9"
Width 8"



Price \$300.00

Manufacturer: Garry Halverson

Description: Ash

Size: 200 Cubic Inches
Height 9"
Width 8"



Price \$300.00

Manufacturer: Bruce James

Description: Ash "Fisherman and Boat"

Size: 200 Cubic Inches
Height 9"
Width 8"



Price \$300.00

Manufacturer: Patra Urns
Description: Maple Tractor/Farm Scene

Size: 200 Cubic Inches
Height 11"
Width 6"



Price \$350.00

Manufacturer: Garry Halverson
Description: Wood Tractor #1

Size: 200 Cubic Inches
Height 9"
Width 8"



Price \$300.00

Manufacturer: Garry Halverson
Description: Wood Tractor #2 (black background)

Size: 200 Cubic Inches
Height 9"
Width 8"



Price \$300.00

Manufacturer: Garry Halverson
Description: Wood Tractor #2 (Green background)

Size: 200 Cubic Inches
Height 9"
Width 8"



Price \$300.00

Manufacturer: Gravure Craft
Description: Fisherman 3D Engraved Urn Oak
UR - 3000

Size: 200 Cubic Inches
Height 8 5/8"
Width 10 3/4 X 7 1/4"



Price \$750.00

Manufacturer: Ken Noble
Description: Mixed Woods Round (Turned) #1

Size: 200 Cubic Inches
Height 9"
Width 6"



Price \$250.00

Manufacturer: Ken Noble
Description: Mixed Wood Round (Turned) #2

Size: 200 Cubic Inches
Height 9"
Width 6"



Price \$250.00

Manufacturer: Patra Urns
Description: Maple Semi Truck #1

Size: 200 Cubic Inches
Height 9"
Width 8"



Price \$350.00

Manufacturer: Garry Halverson

Description: Ash Semi Truck #2

Size: 200 Cubic Inches
Height 9"
Width 8"



Price \$300.00

Manufacturer: Gravure Craft

Description: Hockey 3D Urn Walnut #UR-3013

Size: 200 Cubic Inches
Height 7 ½"
Width 7 X 10 ½"



Price \$750.00

Manufacturer: Garry Halverson

Description: Praying Hands

Size: 200 Cubic Inches
Height 9"
Width 8"



Price \$300.00

Manufacturer: Gravure Craft

Description: Engraved Doves Walnut Urn with Maple Inlay #UR-4001

Size: 200 Cubic Inches
Height 9 3/8"
Width 7 ¾ X 7 5/8"



Price \$575.00

Manufacturer: Garry Halverson
Description: Companion Urn, Ash

Size: 400 Cubic Inches
Height 12"
Width 13"



Price \$375.00

Manufacturer: Garry Halverson
Description: Wood Masonic Lodge

Size: 200 Cubic Inches
Height 9"
Width 8"



Price \$300.00

Manufacturer: Ken Noble
Description: Ash Walnut Construction
KN #1

Size: 200 Cubic Inches
Height 7"
Width 10"



Price \$200.00

Manufacturer: Garry Halverson
Description: Ash Walnut Hexagonal upright

Size: 200 Cubic Inches
Height 10"
Width 7"



Price \$350.00

Manufacturer: Garry Halverson
Description: Ash & Walnut Pyramid

Size: 200 Cubic Inches
Height 9"
Width 8"



Price \$325.00

Manufacturer: Bruce James
Description: Wood "Dad"

Size: 200 Cubic Inches
Height 9"
Width 8"



Price \$300.00

Manufacturer: Ken Noble
Description: Ash/Walnut

Size: 200 Cubic Inches
Height 8"
Width 9"



Price \$200.00

Manufacturer: Ken Noble
Description: Ash

Size: 200 Cubic Inches
Height 8"
Width 9"



Price \$200.00

Manufacturer: Garry Halverson
Description: Ash

Size: 200 Cubic Inches
Height 8"
Width 9"



Price \$250.00

Manufacturer: Bruce James
Description: Fishing Scene

Size: 200 Cubic Inches
Height 8"
Width 9"



Price \$300.00

Manufacturer: Ken Noble
Description: Wood Barn Roof
Maple /Pine

Size: 200 Cubic Inches
Height 8"
Width 9"



Price \$250.00

Manufacturer: Ken Noble
Description: Ash

Size: 200 Cubic Inches
Height 8"
Width 9"



Price \$250.00

Manufacturer: Garry Halverson
Description: Wood Fishing Scene

Size: 200 Cubic Inches
Height 8"
Width 9"



Price \$300.00

Manufacturer: Garry Halverson
Description: Wood Golfer

Size: 200 Cubic Inches
Height 9"
Width 7"



Price \$300.00

Manufacturer: Garry Halverson
Description: Wood Poppy inlay #1, Oak

Size: 200 Cubic Inches
Height 8"
Width 9"



Price \$300.00

Manufacturer: Garry Halverson
Description: Wood Poppy inlay #2

Size: 200 Cubic Inches
Height 8"
Width 9"



Price \$300.00



Price \$1565.00

Argyle #618 Northern Casket

- Poplar Veneer Sides/Solid Poplar Top
- inside 76"x 22"x 17"
- outside 80"x 29"x 22"
- weight 150lbs
- mahogany spray stain finish
- triple coat, gloss finish
- Rosetan crepe interior
- sunburst head panel
- Suitable for Cremation



Price \$3395.00

Assiniboine #959 Northern Casket

- 100% Canadian solid oak
- Solid Wood bottom
- inside 78"x 23"x 17"
- outside 83"x 30"x 23"
- weight 160lbs
- Stone Coat satin finish
- Lasered wheat shields, end handles
- Toast Velvet Interior
- Suitable for Cremation



Price \$2795.00

Calvary, #31 Northern Casket

- Ash Veneer sides, solid ash top & mouldings
- Solid Wood bottom
- inside 76"x 22"x 17"
- outside 80"x 30"x 22"
- weight 140lbs
- Double coat gloss finish
- 3X1 continuous, Praying hands hardware
- White satin, red velvet pleats
- Last Supper panel
- Suitable for Cremation



Price \$2695.00

Camo #303, Northern Casket

- Ash Veneer sides/solid ash top & mouldings
- Inside 76" X22" X 17"
- Outside 80"X29"X22"
- Weight 140
- Amber Spray Satin , stone coat satin finish
- Camo Wrapped sides and lid
- Rosetan Crepe/Realtree camo with camo head panel
- Suitable for Cremation



Price \$2400.00

Carlton #33, Northern Casket

- Ash veneer sides/solid ash top and mouldings
- Inside 76"X22"X17"
- Outside 80"X29"X22"
- Weight 140
- Double Coat, Gloss Finish
- Rosetan Crepe interior with sunburst head panel
- Suitable for Cremation



Price \$2000.00

Glentay Ash #444, Northern Casket

- 100% Solid Ash
- Solid Wood Bottom
- Inside 76"X24"X16"
- Outside 80"X30"X21"
- Weight 150 lbs
- Amber spray stain/Stonecoat satin finish
- Antique Gold Arms
- Rosetan Crepe interior, button head panel
- Suitable for Cremation



Price \$2395.00

Colonial #488, Northern Casket

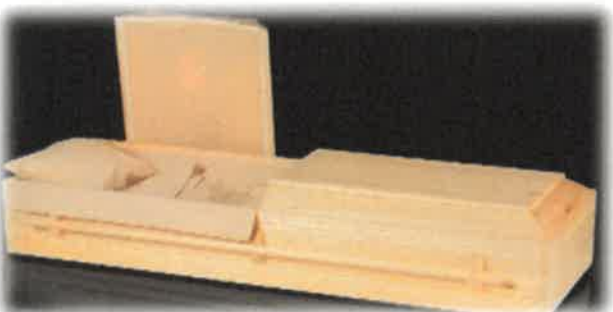
- Ash Veneer sides, solid ash top & mouldings
- Solid Wood Bottom
- Inside 76"X22"X17"
- Outside 80"X29"X22"
- Weight 140 lbs
- Black horizontal blending, triple coat, gloss finish
- End Handles
- Blue Satin
- Rosetan Crepe, button head panel
- Suitable for Cremation



Price \$2295.00

Carter #228DW, Northern Casket

- 100% solid Ontario poplar
- Solid Wood Bottom
- Inside 77"X22"X15"
- Outside 80"X30"X21"
- Weight 125 lbs
- Northern Walnut spray stain/triple coat, gloss finish
- Rosetan Crepe interior with sunburst head panel
- Suitable for Cremation



Price \$1195.00

Eden #116, Enviro Casket Northern Casket

- 100% solid Ontario poplar
- No metal, steel or plastics
- Solid Wood Bottom
- Inside 75"X21"X14"
- Outside 77"X30"X17"
- Weight 125 lbs
- Natural finish, Single coat, natural sealer
- Natural Cotton interior, button head panel
- Suitable for Cremation



Price \$1680.00

Franklin Blue #N209, Northern Casket

- 20 gauge North American Steel, full sealer
- Sealed steel bottom
- Inside 78"X23"X16"
- Outside 84"X28.5"X24"
- Weight 150 lbs
- Blue with Silver pin striping, high gloss
- Blue Crepe with Sunburst head panel



Price \$3295.00

Homestead #707, Northern Casket

- 100% Canadian Solid Maple
- Solid Wood bottom
- Inside 78"X24"X17"
- Outside 83"X30"X23"
- Weight 175 lbs
- Hand Rubbed, cherry ark filler, triple coat gloss finish
- Rosetan Crepe interior with sunburst head panel.
- Option of Toast Velvet Interior
- Suitable for Cremation



Price \$2550.00

Madawaska #34, Northern Casket

- Ash Veneer sides/solid ash top & mouldings
- Solid Wood bottom
- Inside 76"X22"X17"
- Outside 80"X29"X22"
- Weight 140 lbs
- Double coat, gloss finish, horizontal walnut shader
- Rosetan crepe interior with sunburst head panel
- Suitable for Cremation



Price \$1300.00

Norway #526, Northern Casket

- Poplar veneer sides, solid poplar top & mouldings
- Solid Wood bottom
- Inside 76"X24"X17"
- Outside 80"X31"X21"
- Weight 150 lbs
- Northern Walnut OR Mahogany spray stain, Double coat satin finish
- Rosetan crepe interior with plain head panel
- Suitable for Cremation



Price \$2800.00

Rose Ashton #501, Northern Casket

- 100% Canadian Solid Ash
- Solid Wood bottom
- Inside 75"X21"X16"
- Outside 80"X29"X22"
- Weight 150 lbs
- Double Coat, gloss finish, horizontal walnut shading
- Pink Crepe interior, 3 rose embroidered head panel
- Suitable for Cremation



Price \$2400.00

Sussex #550, Northern Casket

- 100% Canadian Solid Ash
- Solid Wood bottom
- Inside 75"X21"X16"
- Outside 80"X27"X20"
- Weight 150 lbs
- Ash Spray stain, Stonecoat satin finish
- Light egg satin, Shirred head panel
- Suitable for Cremation



Price \$1995.00

Truman Brown #N208, Northern Casket

- 20 gauge North American Steel, full sealer
- 100% sealed steel bottom
- Inside 78"X23"X16"
- Outside 84"X28.5"X24"
- Weight 150 lbs
- Brown with pin-striping, high gloss
- Rosetan crepe interior with straight pipes head panel



Price \$1995.00

Truman White #N203, Northern Casket

- 20 gauge North American Steel, full sealer
- 100% sealed steel bottom
- Inside 78"X23"X16"
- Outside 84"X28.5"X24"
- Weight 150 lbs
- White with gold pinstriping, high gloss
- White crepe interior, bowtie head panel



Price \$2500.00

Windridge #640, Northern Casket

- 100% Ontario solid pine
- Inside 78"X22"X17"
- Outside 80"X29"X23"
- Weight 140 lbs
- Hand rubbed, puritan pine filler, Stonecoat satin finish
- Rosetan Crepe, Pinecone embroidered head panel
- Plain head panel
- Suitable for Cremation



Price \$899.00

Faith Ultralight, Imperial Group #CR1900

- Fibreboard
- Ivory White Cloth covering
- White Interior
- Made in Canada
- Dimensions: 82 ½ X 28 X 16 ¾ "
- Weight 50 lbs
- Suitable for Cremation



Price \$3869.00

Farmstead, Imperial Group #ME2800

- 18 gauge Steel
- Brushed Heritage Finish
- Tan Crepe Interior with Barn Scene
- Dimensions: 83 X 28X23"
- Weight 175 lbs



Price \$799.00

Horizon Birch, Imperial Group CR1550

- Canadian Birch
- Eggshell Apollo Interior
- Wood-grain handles
- Made in Canada
- Dimensions: 76X23X12 ½"
- Weight 75
- Suitable for Cremation



Price \$4250.00

Newport Cedar, Imperial Group #HW8200

- Solid Aromatic Cedar
- Natural Gloss Finish
- Velvet Interior
- Dimensions: 83 ¾ X 28 ¾ X 22 ½"
- Weight 175
- Suitable for Cremation



Price \$4199.00

Sunset Oak, Imperial Group #HW3200

- Eastern Red Oak
- Medium Dark Satin finish
- Tan Crepe Interior
- Dimensions: 83 X 27 ½ X 20 ¾"
- Weight 175
- Suitable for Cremation



Price \$3599.00

White Pearl Rose, Imperial Group #ME1850

- 18 gauge Steel
- White Eco Finish
- Soft Pink Crepe Interior with Roses
- Dimensions: 83 ½ X 28 ¾ X 22"
- Weight 175



Price \$499.00

Bellview, Imperial Group #CR1540

- Baltic Birch
- Prairie Style Viewing
- White Interior
- Dimensions: 76"X23"X12.5"
- Weight 75 lbs
- Suitable for Cremation



Price \$499.00

Bellmont, Imperial Group #CR1530

- Baltic Birch
- Lift Lid & Pillow
- Lantra Interior
- Dimensions: 75 ¾ X 22 ¾ X 12 ½"
- Weight 75 lbs
- Suitable for Cremation



Price \$180.00

Cardboard, Imperial Group #2515

- Cardboard Lid
- No Lining
- Dimensions: 76 ½ X 23 ½ X 12 ¼"
- Weight 25 lbs
- Suitable for Cremation



Price \$395.00

Rough Box

Northridge Funeral Home Ltd.

- Outer container for casket,
- Plywood construction
- Non sealing
- Delivery included to cemetery within Rainy River District
- Bio-degradable



Price \$500.00 + delivery

Concrete Vault Liner

Belluz Concrete, Fort Frances

- Outer Concrete grave liner, basic sealing,
- Not representative as water resistant.
- Delivery extra, based on Belluz Concrete transportation rate at time of order
- Example: Delivery to Emo Cemetery including vault cost \$675. Cost with delivery to Rainy River is \$750. Subject to change.
- Heavy Equipment required to handle



Price \$650.00

Atlas Casket Vault/Polyguard – Heavy Duty

Steve Moyne Distributors

- Engineered to be non-biodegradable
- Weight 150 lbs
- 100 year warranty
- Engineered for use in double depth burial
- Structural integrity similar to concrete
- No added Delivery fees



Price \$350.00

**Urn Vault, Polyguard Heavy Duty
Dodge Chemical Co.**

- Dimensions: 10 ½ X 19 ¾ X 16 ½ "
- Heavy duty with sealing gasket



Price \$250.00

**Urn Vault
Pyramid Style, Dodge Chemical Co.**

- Dimensions: 12X14 3/8 X 9"
- Heavy Duty with sealing gasket