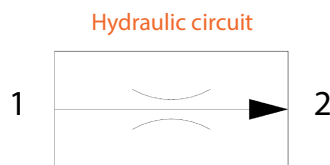


PRESSURE COMPENSATED FLOW CONTROL VALVES



Technical data

Mineral oil	ISO 6743/4 (DIN 51524)	
Oil viscosity	15-250 mm ² /s (15 to 250 cSt)	
Max contamination index with filter	ISO 4406:1999 Classe 19/17/14	
Oil temperature	-20°C +80°C	-4°F + 176°F
Ambient temperature	-20°C +50°C	-4°F + 122°F
NOTE: It is advised to install a filter, to protect the valve (advised filtration 15 µm)		

Min flow l/min- (USgpm)	Max flow l/min- (USgpm)	Max pressure bar- (PSI)	Approx weight kg -(lb)
0.5 (0.13)	16 (4.23)	210 (3625)	0,150 (0.33)

NOTE: Oil temperature has an effect on the flow and if working at excessive temperature please consult with our technical sales department at Pro E Con Ltd.

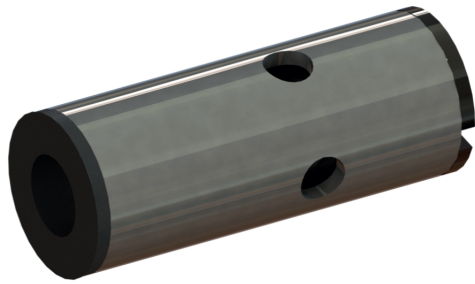
Description

The Pro E Con fixed pressure compensated flow control comes in many different designs to accommodate the application requirements. The push in cartridge is a compact design regularly used in compact powerpacks. It will control flows up to 16.0 Litres/min and can readily be incorporated into your own components.

Its function of passing hydraulic fluid at a constant rate, irrespective of induced load pressures. Makes this a great option on applications requires a repeatable constant lowering speed. Application examples: Fork Lift, Stacker Trucks, Scissor Lift, Wheel chair platforms, Tail-Lifts etc.

In certain applications and if directly installed to the single acting cylinder port, the flow control valve will act as a safeguard against hose/pipe burst as the load will descend at the controlled decent speed.

The flow control valve can also be incorporated into a hydraulic circuit to divert a flow from the pump to feed a secondary service line.



Hydraulic circuit



Ordering code

01	02
A100483-2	

01	(Cartridge - Pressure Compensated Flow Control)	A100483-2
02	0.5 l/min (0.13 USgpm)	005
	0.8 l/min (0.21 USgpm)	008
	1.0 l/min (0.26 USgpm)	010
	1.2 l/min (0.32 USgpm)	012
	1.5 l/min (0.40 USgpm)	015
	1.7 l/min (0.45 USgpm)	017
	2.0 l/min (0.53 USgpm)	020
	2.5 l/min (0.66 USgpm)	025
	3.0 l/min (0.79 USgpm)	030
	4.0 l/min (1.05 USgpm)	040
	5.0 l/min (1.32 USgpm)	050
	6.4 l/min (1.69 USgpm)	064
	7.5 l/min (1.98 USgpm)	075
	8.0 l/min (2.11 USgpm)	080
	9.0 l/min (2.38 USgpm)	090
	10.0 l/min (2.64 USgpm)	100
11.5 l/min (3.04 USgpm)	115	
13.7 l/min (3.62 USgpm)	137	
16.0 l/min (4.23 USgpm)	160	

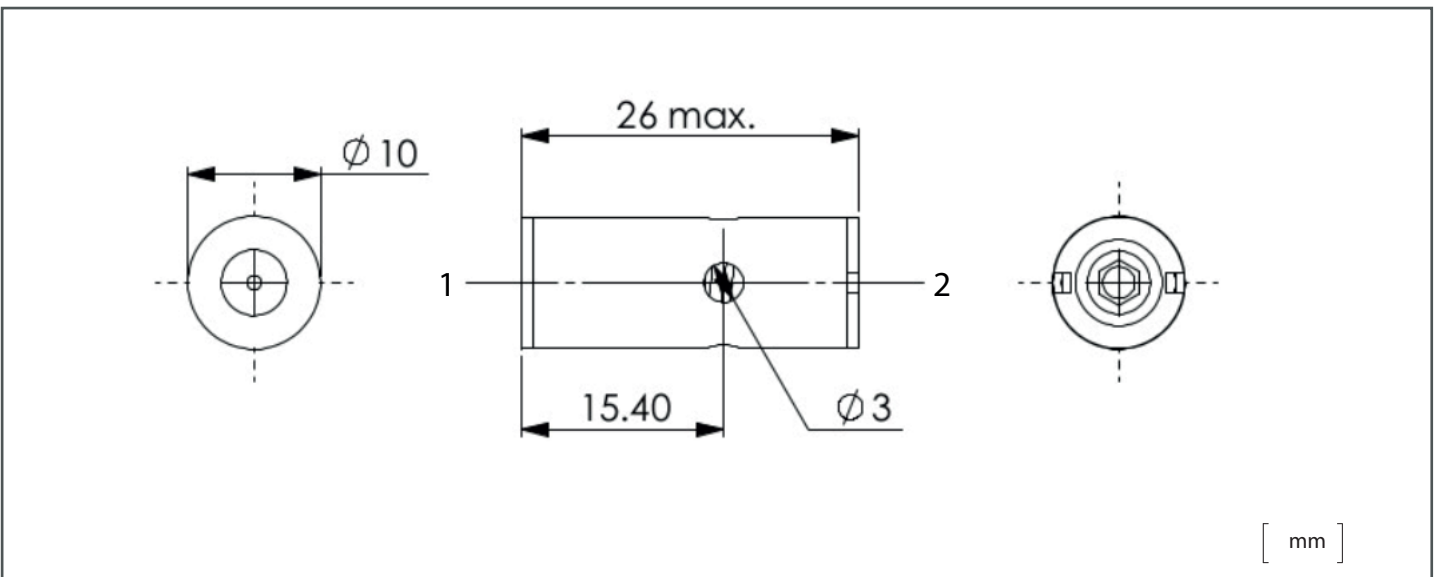
(Controlled flow at 100 bar ± 15 %)

Technical data

Mineral oil	ISO 6743/4 (DIN 51524)	
Oil viscosity	15-250 mm ² /s (15 to 250 cSt)	
Max contamination index with filter	ISO 4406:1999 Classe 19/17/14	
Oil temperature	-20°C +80°C	-4°F + 176°F
Ambient temperature	-20°C +50°C	-4°F + 122°F
NOTE: It is advised to install a filter, to protect the valve (advised filtration 15 µm)		

Type	Max flow l/min- (USgpm)	Max pressure bar- (PSI)	Tightening torque Nm- (lbt ft)	Approx weight kg - (lb)
A100483-2	16 (4.23)	210 (3625)	(Push insert)	0,012 (0,026)

Higher accuracy can be achieved +/- 5 % on request. Please contact Pro E Con for more information.





Hydraulic circuit



Ordering code

01	02
A104015-1	

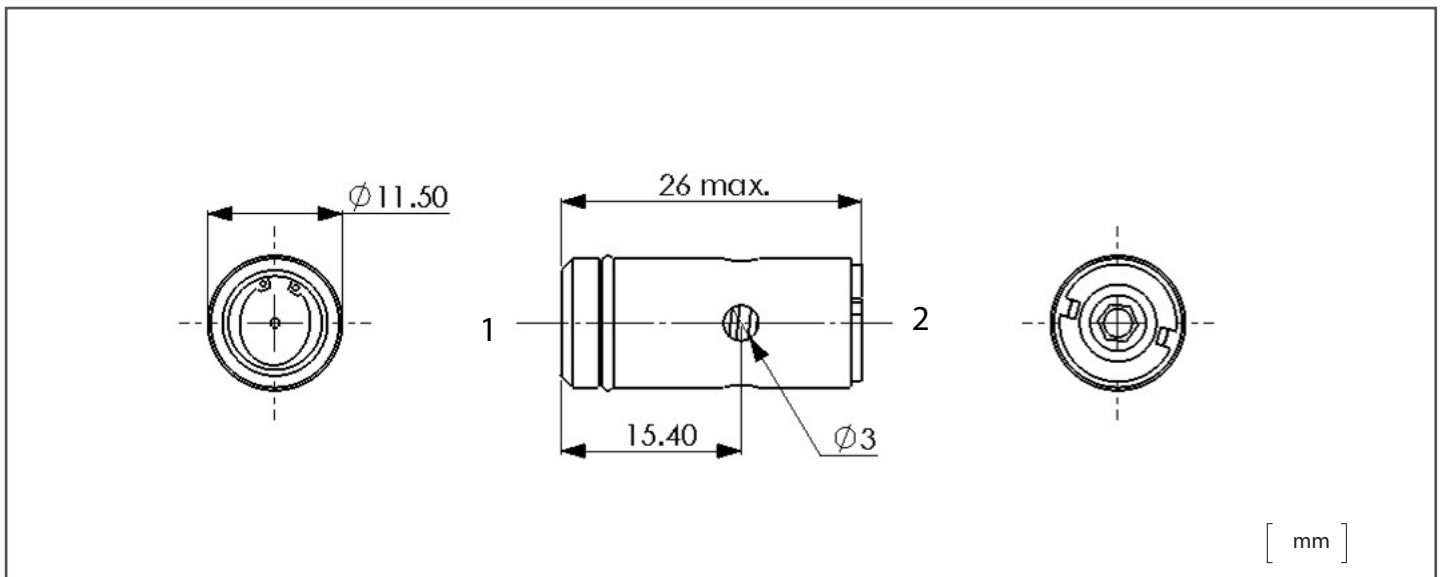
01	(Cartridge - Pressure Compensated Flow Control)	A104015-1
02	(Controlled flow at 100 bar ± 15 %)	0.5 l/min (0.13 USgpm) 005
		0.8 l/min (0.21 USgpm) 008
		1.0 l/min (0.26 USgpm) 010
		1.2 l/min (0.32 USgpm) 012
		1.5 l/min (0.40 USgpm) 015
		1.7 l/min (0.45 USgpm) 017
		2.0 l/min (0.53 USgpm) 020
		2.5 l/min (0.66 USgpm) 025
		3.0 l/min (0.79 USgpm) 030
		4.0 l/min (1.05 USgpm) 040
		5.0 l/min (1.32 USgpm) 050
		6.4 l/min (1.69 USgpm) 064
		7.5 l/min (1.98 USgpm) 075
		8.0 l/min (2.11 USgpm) 080
		9.0 l/min (2.38 USgpm) 090
		10.0 l/min (2.64 USgpm) 100
11.5 l/min (3.04 USgpm) 115		
13.7 l/min (3.62 USgpm) 137		
16.0 l/min (4.23 USgpm) 160		

Technical data

Mineral oil	ISO 6743/4 (DIN 51524)	
Oil viscosity	15-250 mm ² /s (15 to 250 cSt)	
Max contamination index with filter	ISO 4406:1999 Classe 19/17/14	
Oil temperature	-20°C +80°C	-4°F + 176°F
Ambient temperature	-20°C +50°C	-4°F + 122°F
NOTE: It is advised to install a filter, to protect the valve (advised filtration 15 µm)		

Type	Max flow l/min- (USgpm)	Max pressure bar- (PSI)	Tightening torque Nm- (lbt ft)	Approx weight kg - (lb)
A104015-1	16 (4.23)	210 (3625)	18 (13.3)	0,024 (0.053)

Higher accuracy can be achieved +/- 5 % on request. Please contact Pro E Con for more information.





Hydraulic circuit



Ordering code

01	02
A100725-2	

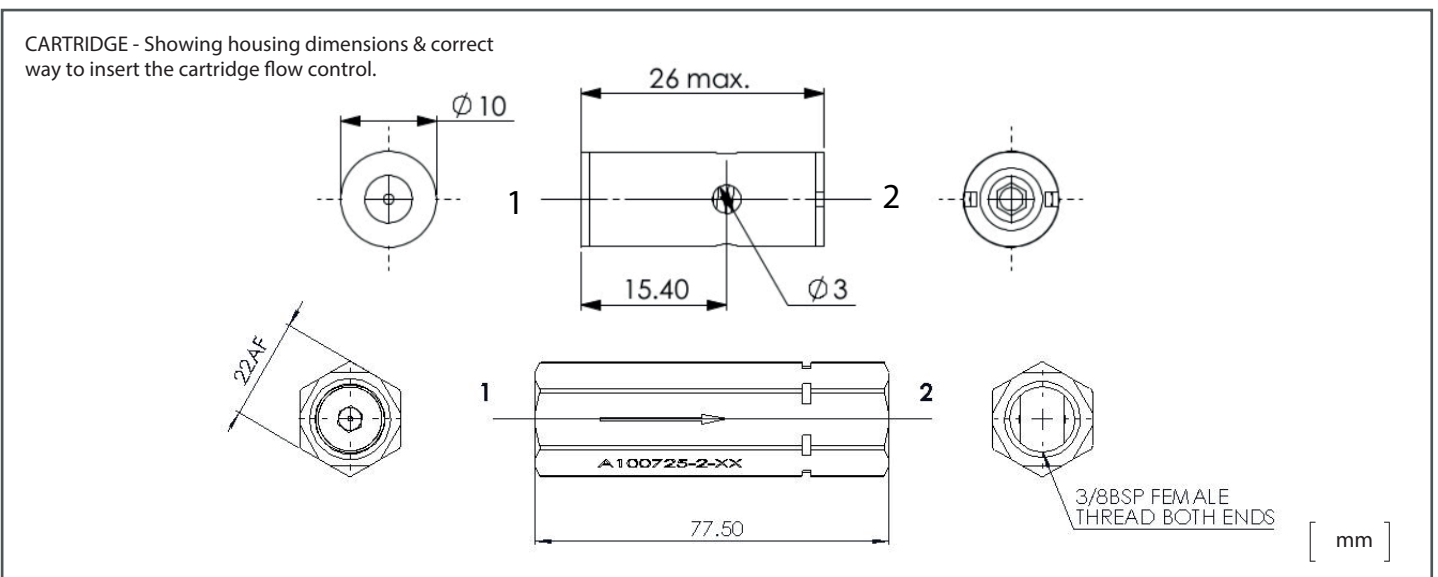
01	(FCV Inline - Pressure Compensated Flow Control)	A100725-2
02	(Controlled flow at 100 bar ± 15%)	0.5 l/min (0.13 USgpm) 005
		0.8 l/min (0.21 USgpm) 008
		1.0 l/min (0.26 USgpm) 010
		1.2 l/min (0.32 USgpm) 012
		1.5 l/min (0.40 USgpm) 015
		1.7 l/min (0.45 USgpm) 017
		2.0 l/min (0.53 USgpm) 020
		2.5 l/min (0.66 USgpm) 025
		3.0 l/min (0.79 USgpm) 030
		4.0 l/min (1.05 USgpm) 040
		5.0 l/min (1.32 USgpm) 050
		6.4 l/min (1.69 USgpm) 064
		7.5 l/min (1.98 USgpm) 075
		8.0 l/min (2.11 USgpm) 080
		9.0 l/min (2.38 USgpm) 090
		10.0 l/min (2.64 USgpm) 100
11.5 l/min (3.04 USgpm) 115		
13.7 l/min (3.62 USgpm) 137		
16.0 l/min (4.23 USgpm) 160		

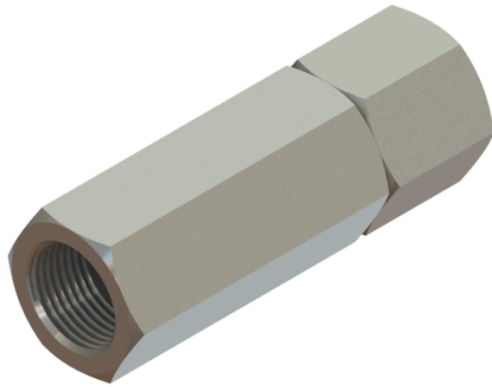
Technical data

Mineral oil	ISO 6743/4 (DIN 51524)	
Oil viscosity	15-250 mm ² /s (15 to 250 cSt)	
Max contamination index with filter	ISO 4406:1999 Classe 19/17/14	
Oil temperature	-20°C +80°C	-4°F + 176°F
Ambient temperature	-20°C +50°C	-4°F + 122°F
NOTE: It is advised to install a filter, to protect the valve (advised filtration 15 µm)		

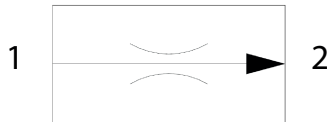
Type	Max flow l/min- (USgpm)	Max pressure bar- (PSI)	Tightening torque Nm- (lbt ft)	Approx weight kg - (lb)
A100725-2	16 (4.23)	210 (3625)	(Push insert)	0,150 (0,33)

Higher accuracy can be achieved +/- 5 % on request. Please contact Pro E Con for more information.





Hydraulic circuit



Ordering code

01	02
A100725-5	

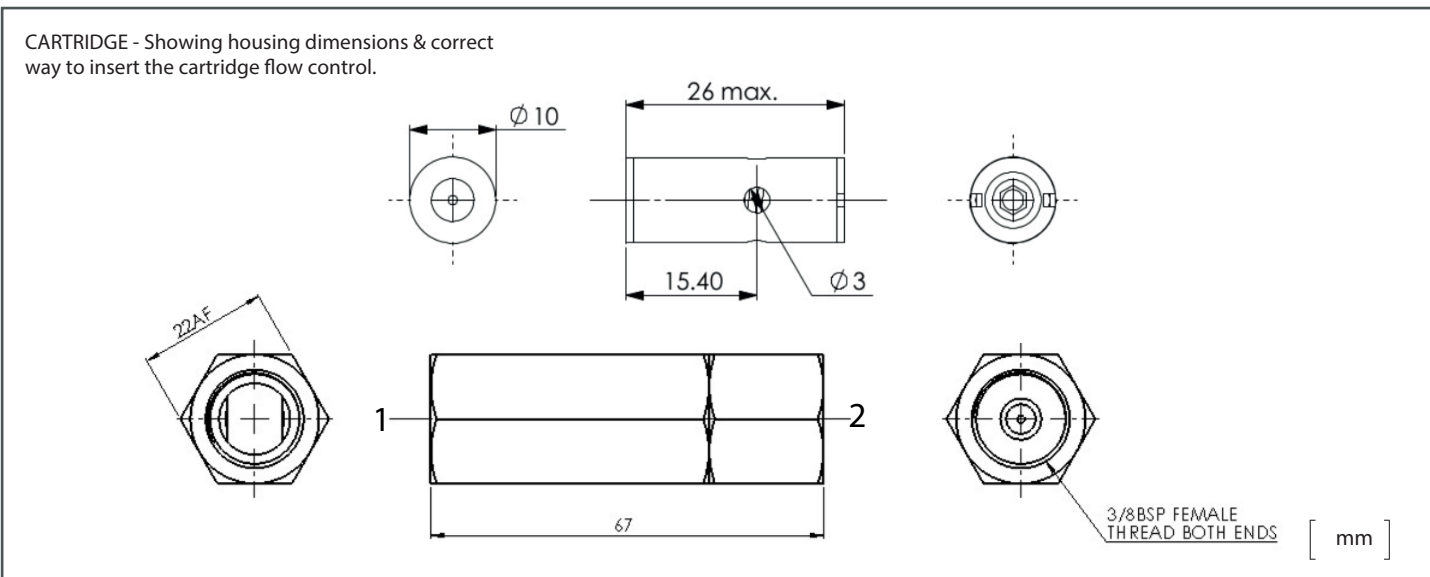
01	(FCV In-line - Pressure Compensated Flow Control)		A100725-2
02	(Controlled flow at 100 bar ± 15%)	0.5 l/min (0.13 USgpm)	005
		0.8 l/min (0.21 USgpm)	008
		1.0 l/min (0.26 USgpm)	010
		1.2 l/min (0.32 USgpm)	012
		1.5 l/min (0.40 USgpm)	015
		1.7 l/min (0.45 USgpm)	017
		2.0 l/min (0.53 USgpm)	020
		2.5 l/min (0.66 USgpm)	025
		3.0 l/min (0.79 USgpm)	030
		4.0 l/min (1.05 USgpm)	040
		5.0 l/min (1.32 USgpm)	050
		6.4 l/min (1.69 USgpm)	064
		7.5 l/min (1.98 USgpm)	075
		8.0 l/min (2.11 USgpm)	080
		9.0 l/min (2.38 USgpm)	090
		10.0 l/min (2.64 USgpm)	100
11.5 l/min (3.04 USgpm)	115		
13.7 l/min (3.62 USgpm)	137		
16.0 l/min (4.23 USgpm)	160		

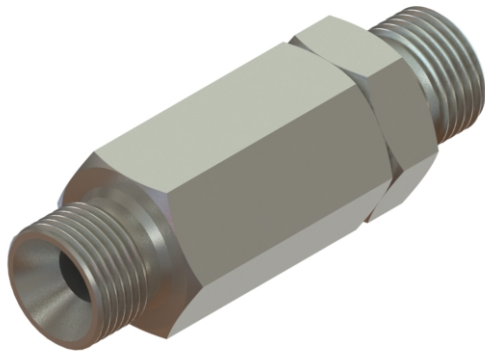
Technical data

Mineral oil	ISO 6743/4 (DIN 51524)	
Oil viscosity	15-250 mm ² /s (15 to 250 cSt)	
Max contamination index with filter	ISO 4406:1999 Classe 19/17/14	
Oil temperature	-20°C +80°C	-4°F + 176°F
Ambient temperature	-20°C +50°C	-4°F + 122°F
NOTE: It is advised to install a filter, to protect the valve (advised filtration 15 µm)		

Type	Max flow l/min- (USgpm)	Max pressure bar- (PSI)	Tightening torque Nm- (lbt ft)	Approx weight kg - (lb)
A100725-5	16 (4.23)	210 (3625)	(Push insert)	0,150 (0,33)

Higher accuracy can be achieved +/- 5 % on request. Please contact Pro E Con for more information.





Hydraulic circuit



Ordering code

01	02
A100725-6	

01	(FCV Inline - Pressure Compensated Flow Control)		A100725-2
02	(Controlled flow at 100 bar ± 15%)	0.5 l/min (0.13 USgpm)	005
		0.8 l/min (0.21 USgpm)	008
		1.0 l/min (0.26 USgpm)	010
		1.2 l/min (0.32 USgpm)	012
		1.5 l/min (0.40 USgpm)	015
		1.7 l/min (0.45 USgpm)	017
		2.0 l/min (0.53 USgpm)	020
		2.5 l/min (0.66 USgpm)	025
		3.0 l/min (0.79 USgpm)	030
		4.0 l/min (1.05 USgpm)	040
		5.0 l/min (1.32 USgpm)	050
		6.4 l/min (1.69 USgpm)	064
		7.5 l/min (1.98 USgpm)	075
		8.0 l/min (2.11 USgpm)	080
		9.0 l/min (2.38 USgpm)	090
		10.0 l/min (2.64 USgpm)	100
11.5 l/min (3.04 USgpm)	115		
13.7 l/min (3.62 USgpm)	137		
16.0 l/min (4.23 USgpm)	160		

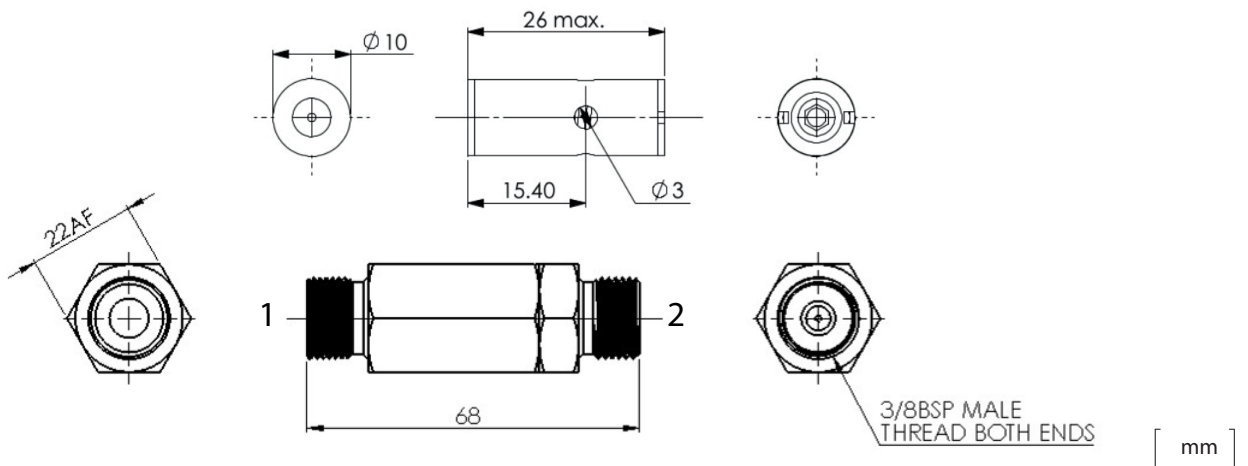
Technical data

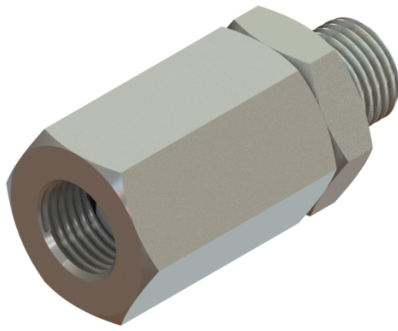
Mineral oil	ISO 6743/4 (DIN 51524)	
Oil viscosity	15-250 mm ² /s (15 to 250 cSt)	
Max contamination index with filter	ISO 4406:1999 Classe 19/17/14	
Oil temperature	-20°C +80°C	-4°F + 176°F
Ambient temperature	-20°C +50°C	-4°F + 122°F
NOTE: It is advised to install a filter, to protect the valve (advised filtration 15 µm)		

Type	Max flow l/min- (USgpm)	Max pressure bar- (PSI)	Tightening torque Nm- (lbt ft)	Approx weight kg - (lb)
A100725-6	16 (4.23)	210 (3625)	(Push insert)	0,150 (0,33)

Higher accuracy can be achieved +/- 5 % on request. Please contact Pro E Con for more information.

CARTRIDGE - Showing housing dimensions & correct way to insert the cartridge flow control.





Hydraulic circuit



Ordering code

01	02
A100725-7	

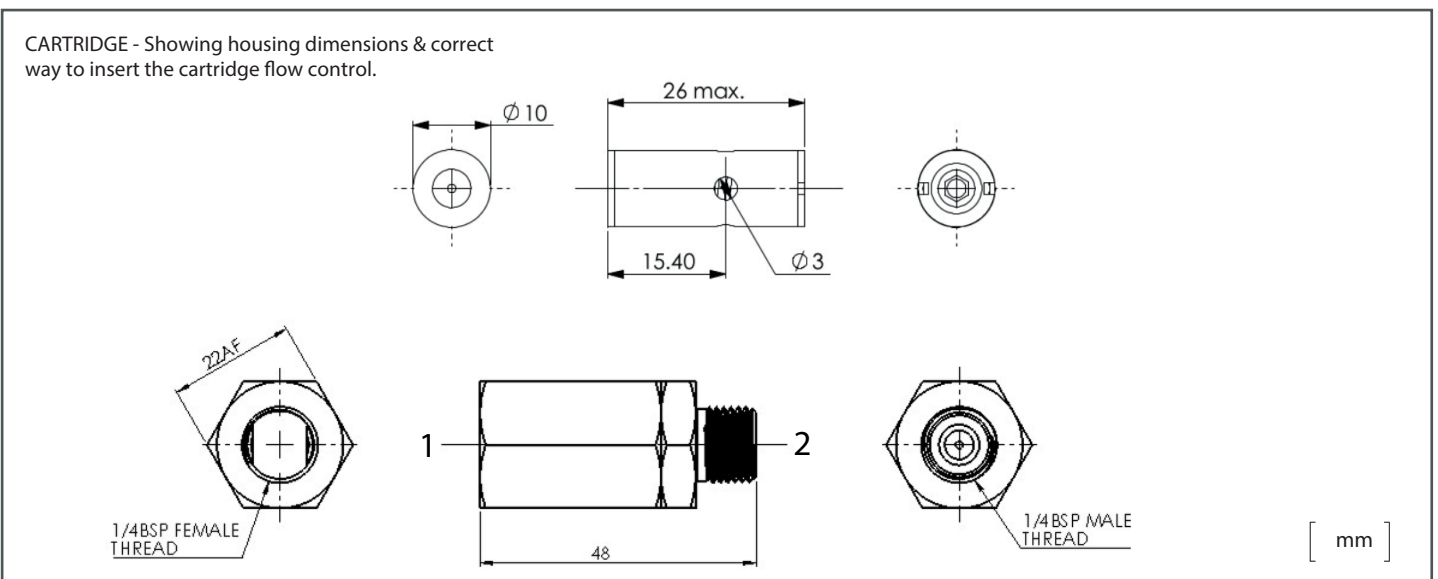
01	(FCV In-line - Pressure Compensated Flow Control)		A100725-2
02	(Controlled flow at 100 bar ± 15%)	0.5 l/min (0.13 USgpm)	005
		0.8 l/min (0.21 USgpm)	008
		1.0 l/min (0.26 USgpm)	010
		1.2 l/min (0.32 USgpm)	012
		1.5 l/min (0.40 USgpm)	015
		1.7 l/min (0.45 USgpm)	017
		2.0 l/min (0.53 USgpm)	020
		2.5 l/min (0.66 USgpm)	025
		3.0 l/min (0.79 USgpm)	030
		4.0 l/min (1.05 USgpm)	040
		5.0 l/min (1.32 USgpm)	050
		6.4 l/min (1.69 USgpm)	064
		7.5 l/min (1.98 USgpm)	075
		8.0 l/min (2.11 USgpm)	080
		9.0 l/min (2.38 USgpm)	090
		10.0 l/min (2.64 USgpm)	100
11.5 l/min (3.04 USgpm)	115		
13.7 l/min (3.62 USgpm)	137		
16.0 l/min (4.23 USgpm)	160		

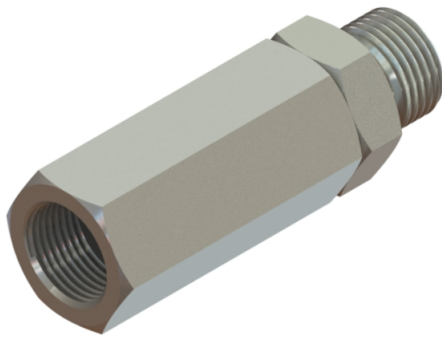
Technical data

Mineral oil	ISO 6743/4 (DIN 51524)	
Oil viscosity	15-250 mm ² /s (15 to 250 cSt)	
Max contamination index with filter	ISO 4406:1999 Classe 19/17/14	
Oil temperature	-20°C +80°C	-4°F + 176°F
Ambient temperature	-20°C +50°C	-4°F + 122°F
NOTE: It is advised to install a filter, to protect the valve (advised filtration 15 µm)		

Type	Max flow l/min- (USgpm)	Max pressure bar- (PSI)	Tightening torque Nm- (lbt ft)	Approx weight kg - (lb)
A100725-7	16 (4.23)	210 (3625)	(Push insert)	0,150 (0,33)

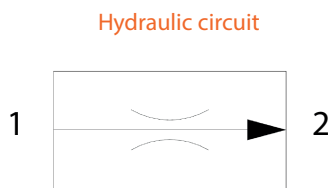
Higher accuracy can be achieved +/- 5 % on request. Please contact Pro E Con for more information.





Ordering code

01	02
A100725-9	



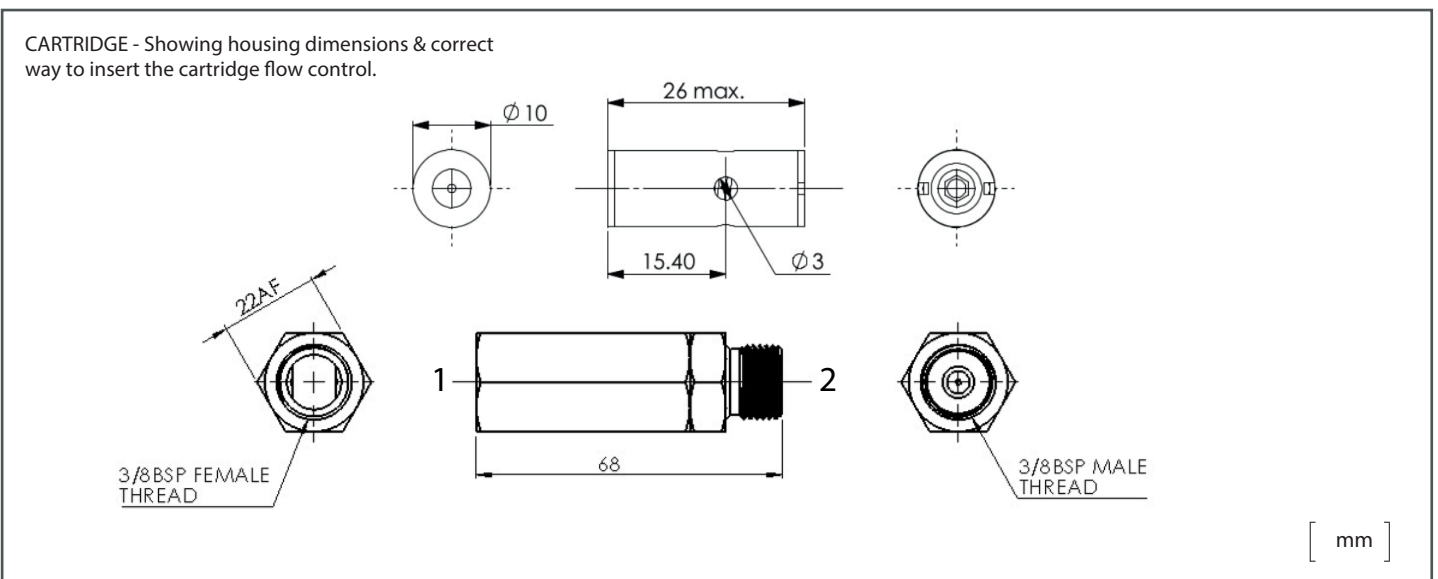
01	(FCV In-line - Pressure Compensated Flow Control)	A100725-2
02	(Controlled flow at 100 bar ± 15%)	0.5 l/min (0.13 USgpm) 005
		0.8 l/min (0.21 USgpm) 008
		1.0 l/min (0.26 USgpm) 010
		1.2 l/min (0.32 USgpm) 012
		1.5 l/min (0.40 USgpm) 015
		1.7 l/min (0.45 USgpm) 017
		2.0 l/min (0.53 USgpm) 020
		2.5 l/min (0.66 USgpm) 025
		3.0 l/min (0.79 USgpm) 030
		4.0 l/min (1.05 USgpm) 040
		5.0 l/min (1.32 USgpm) 050
		6.4 l/min (1.69 USgpm) 064
		7.5 l/min (1.98 USgpm) 075
		8.0 l/min (2.11 USgpm) 080
		9.0 l/min (2.38 USgpm) 090
		10.0 l/min (2.64 USgpm) 100
11.5 l/min (3.04 USgpm) 115		
13.7 l/min (3.62 USgpm) 137		
16.0 l/min (4.23 USgpm) 160		

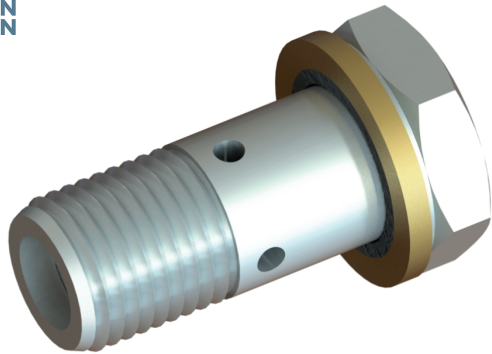
Technical data

Mineral oil	ISO 6743/4 (DIN 51524)	
Oil viscosity	15-250 mm ² /s (15 to 250 cSt)	
Max contamination index with filter	ISO 4406:1999 Classe 19/17/14	
Oil temperature	-20°C +80°C	-4°F + 176°F
Ambient temperature	-20°C +50°C	-4°F + 122°F
NOTE: It is advised to install a filter, to protect the valve (advised filtration 15 µm)		

Type	Max flow l/min- (USgpm)	Max pressure bar- (PSI)	Tightening torque Nm- (lbt ft)	Approx weight kg -(lb)
A100725-9	16 (4.23)	210(3625)	(Push insert)	0,150 (0,33)

Higher accuracy can be achieved +/- 5 % on request. Please contact Pro E Con for more information.





Hydraulic circuit



Ordering code

01	02
A104009-3	

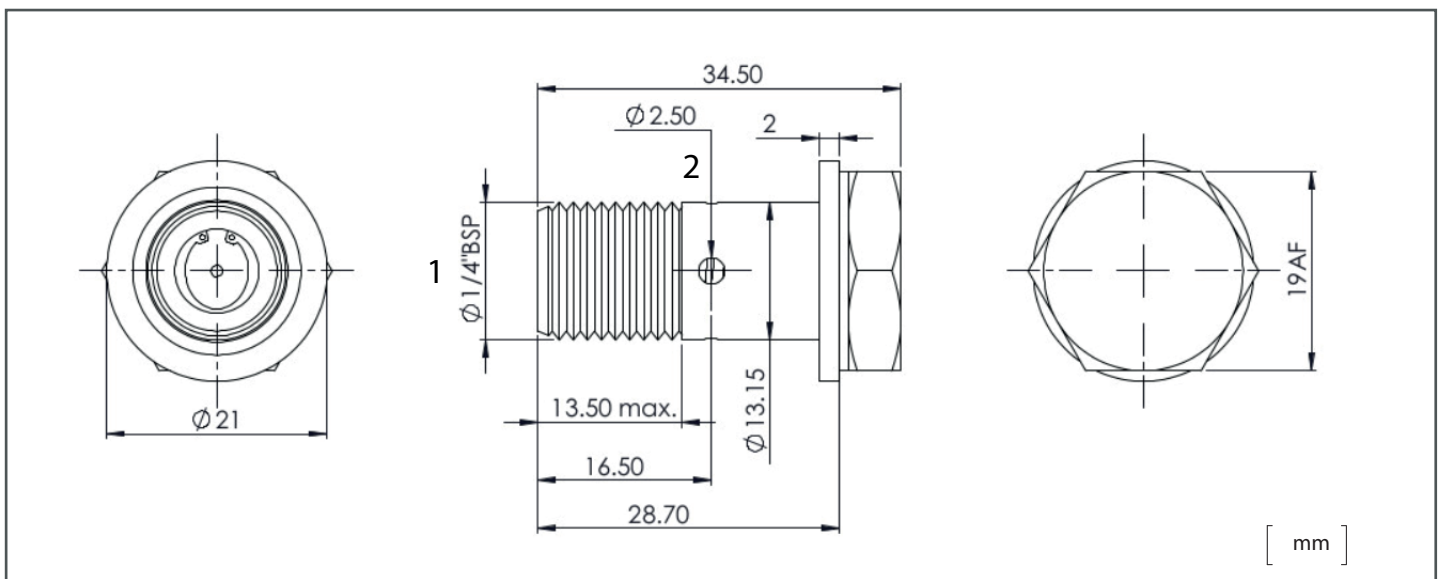
01	(Banjo Bolt - Pressure Compensated Flow Control)		A104009-3
02	(Controlled flow at 100 bar ± 15%)	0.5 l/min (0.13 USgpm)	005
		0.8 l/min (0.21 USgpm)	008
		1.0 l/min (0.26 USgpm)	010
		1.2 l/min (0.32 USgpm)	012
		1.5 l/min (0.40 USgpm)	015
		1.7 l/min (0.45 USgpm)	017
		2.0 l/min (0.53 USgpm)	020
		2.5 l/min (0.66 USgpm)	025
		3.0 l/min (0.79 USgpm)	030
		4.0 l/min (1.05 USgpm)	040
		5.0 l/min (1.32 USgpm)	050
		6.4 l/min (1.69 USgpm)	064
		7.5 l/min (1.98 USgpm)	075
		8.0 l/min (2.11 USgpm)	080
		9.0 l/min (2.38 USgpm)	090
		10.0 l/min (2.64 USgpm)	100
11.5 l/min (3.04 USgpm)	115		
13.7 l/min (3.62 USgpm)	137		
16.0 l/min (4.23 USgpm)	160		

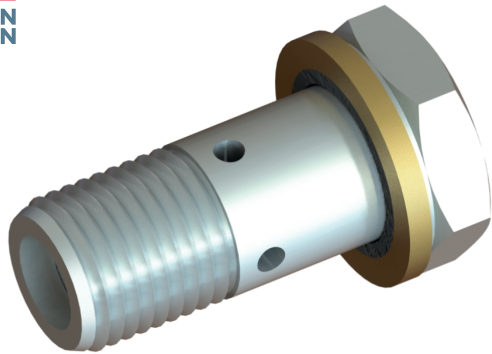
Technical data

Mineral oil	ISO 6743/4 (DIN 51524)	
Oil viscosity	15-250 mm ² /s (15 to 250 cSt)	
Max contamination index with filter	ISO 4406:1999 Classe 19/17/14	
Oil temperature	-20°C +80°C	-4°F + 176°F
Ambient temperature	-20°C +50°C	-4°F + 122°F
NOTE: It is advised to install a filter, to protect the valve (advised filtration 15 µm)		

Type	Max flow l/min- (USgpm)	Max pressure bar- (PSI)	Tightening torque Nm- (lbt ft)	Approx weight kg -(lb)
A104009-3	16 (4.23)	210(3625)	18 (13.3)	0,024 (0.053)

Higher accuracy can be achieved +/- 5 % on request. Please contact Pro E Con for more information.





Hydraulic circuit



01 02

Ordering code

A104009-4

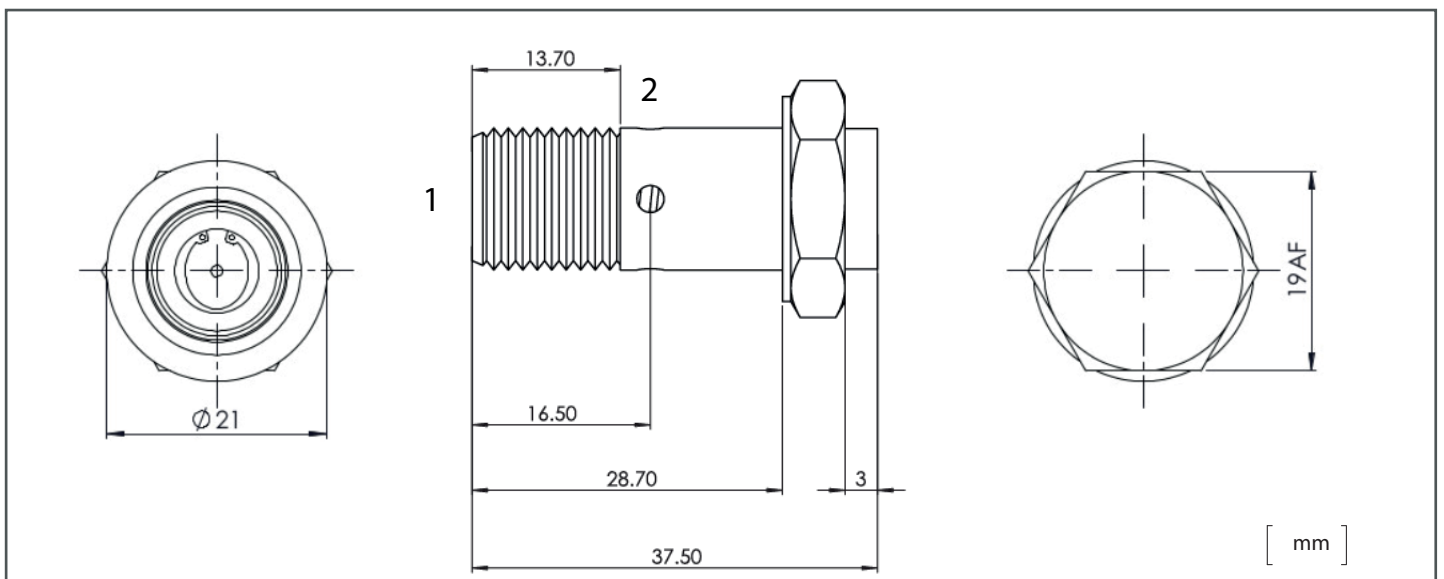
01	(Banjo Bolt - Adjustable Pressure Compensated Flow Control)	A104009-4
02	(Controlled flow at 100 bar ± 15%)	0.5 l/min (0.13 USgpm) 005
		0.8 l/min (0.21 USgpm) 008
		1.0 l/min (0.26 USgpm) 010
		1.2 l/min (0.32 USgpm) 012
		1.5 l/min (0.40 USgpm) 015
		1.7 l/min (0.45 USgpm) 017
		2.0 l/min (0.53 USgpm) 020
		2.5 l/min (0.66 USgpm) 025
		3.0 l/min (0.79 USgpm) 030
		4.0 l/min (1.05 USgpm) 040
		5.0 l/min (1.32 USgpm) 050
		6.4 l/min (1.69 USgpm) 064
		7.5 l/min (1.98 USgpm) 075
		8.0 l/min (2.11 USgpm) 080
		9.0 l/min (2.38 USgpm) 090
10.0 l/min (2.64 USgpm) 100		
11.5 l/min (3.04 USgpm) 115		
13.7 l/min (3.62 USgpm) 137		
16.0 l/min (4.23 USgpm) 160		

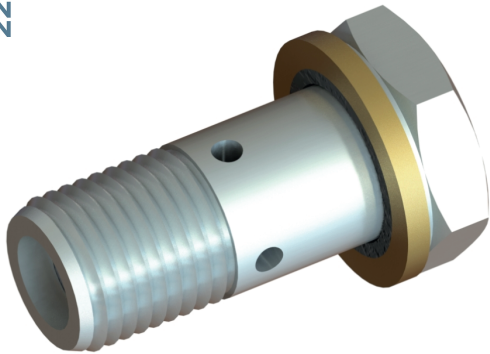
Technical data

Mineral oil	ISO 6743/4 (DIN 51524)	
Oil viscosity	15-250 mm ² /s (15 to 250 cSt)	
Max contamination index with filter	ISO 4406:1999 Classe 19/17/14	
Oil temperature	-20°C +80°C	-4°F + 176°F
Ambient temperature	-20°C +50°C	-4°F + 122°F
NOTE: It is advised to install a filter, to protect the valve (advised filtration 15 µm)		

Type	Max flow l/min- (USgpm)	Max pressure bar- (PSI)	Tightening torque Nm- (lbt ft)	Approx weight kg -(lb)
A104009-4	16 (4.23)	210 (3625)	18 (13.3)	0,024 (0.053)

Higher accuracy can be achieved +/- 5 % on request. Please contact Pro E Con for more information.





Hydraulic circuit



Ordering code

01	02
A104010-3	

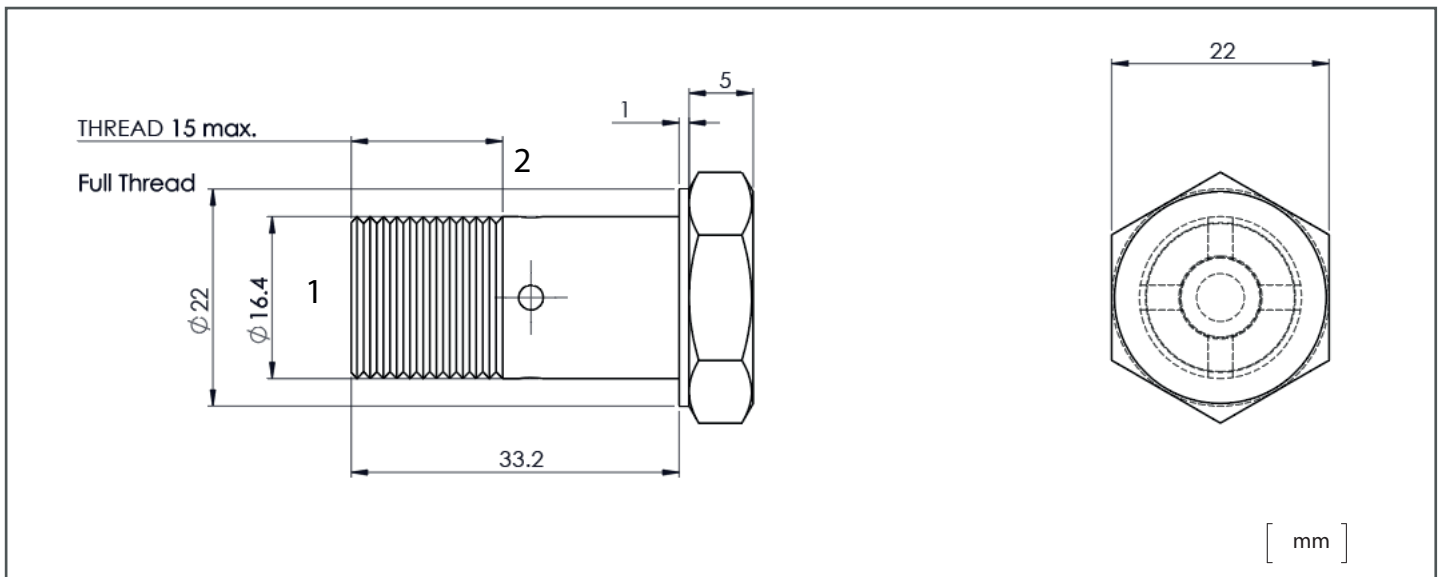
01	(Banjo Bolt - Pressure Compensated Flow Control)		A104009-3
02	(Controlled flow at 100 bar ± 15 %)	0.5 l/min (0.13 USgpm)	005
		0.8 l/min (0.21 USgpm)	008
		1.0 l/min (0.26 USgpm)	010
		1.2 l/min (0.32 USgpm)	012
		1.5 l/min (0.40 USgpm)	015
		1.7 l/min (0.45 USgpm)	017
		2.0 l/min (0.53 USgpm)	020
		2.5 l/min (0.66 USgpm)	025
		3.0 l/min (0.79 USgpm)	030
		4.0 l/min (1.05 USgpm)	040
		5.0 l/min (1.32 USgpm)	050
		6.4 l/min (1.69 USgpm)	064
		7.5 l/min (1.98 USgpm)	075
		8.0 l/min (2.11 USgpm)	080
		9.0 l/min (2.38 USgpm)	090
		10.0 l/min (2.64 USgpm)	100
11.5 l/min (3.04 USgpm)	115		
13.7 l/min (3.62 USgpm)	137		
16.0 l/min (4.23 USgpm)	160		

Technical data

Mineral oil	ISO 6743/4 (DIN 51524)	
Oil viscosity	15-250 mm ² /s (15 to 250 cSt)	
Max contamination index with filter	ISO 4406:1999 Classe 19/17/14	
Oil temperature	-20°C +80°C	-4°F + 176°F
Ambient temperature	-20°C +50°C	-4°F + 122°F
NOTE: It is advised to install a filter, to protect the valve (advised filtration 15 µm)		

Type	Max flow l/min- (USgpm)	Max pressure bar- (PSI)	Tightening torque Nm- (lbt ft)	Approx weight kg -(lb)
A104010-3	16 (4.23)	210(3625)	18 (13.3)	0,024 (0.053)

Higher accuracy can be achieved +/- 5 % on request. Please contact Pro E Con for more information.





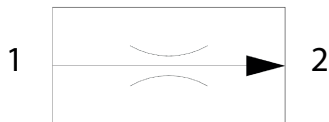
Ordering code

01	02
A104012-1	

01	(FCV Inline - Pressure Compensated Flow Control)	A100725-2
02	0.5 l/min (0.13 USgpm)	005
	0.8 l/min (0.21 USgpm)	008
	1.0 l/min (0.26 USgpm)	010
	1.2 l/min (0.32 USgpm)	012
	1.5 l/min (0.40 USgpm)	015
	1.7 l/min (0.45 USgpm)	017
	2.0 l/min (0.53 USgpm)	020
	2.5 l/min (0.66 USgpm)	025
	3.0 l/min (0.79 USgpm)	030
	4.0 l/min (1.05 USgpm)	040
	5.0 l/min (1.32 USgpm)	050
	6.4 l/min (1.69 USgpm)	064
	7.5 l/min (1.98 USgpm)	075
	8.0 l/min (2.11 USgpm)	080
	9.0 l/min (2.38 USgpm)	090
	10.0 l/min (2.64 USgpm)	100
11.5 l/min (3.04 USgpm)	115	
13.7 l/min (3.62 USgpm)	137	
16.0 l/min (4.23 USgpm)	160	

(Controlled flow at 100 bar ± 15 %)

Hydraulic circuit



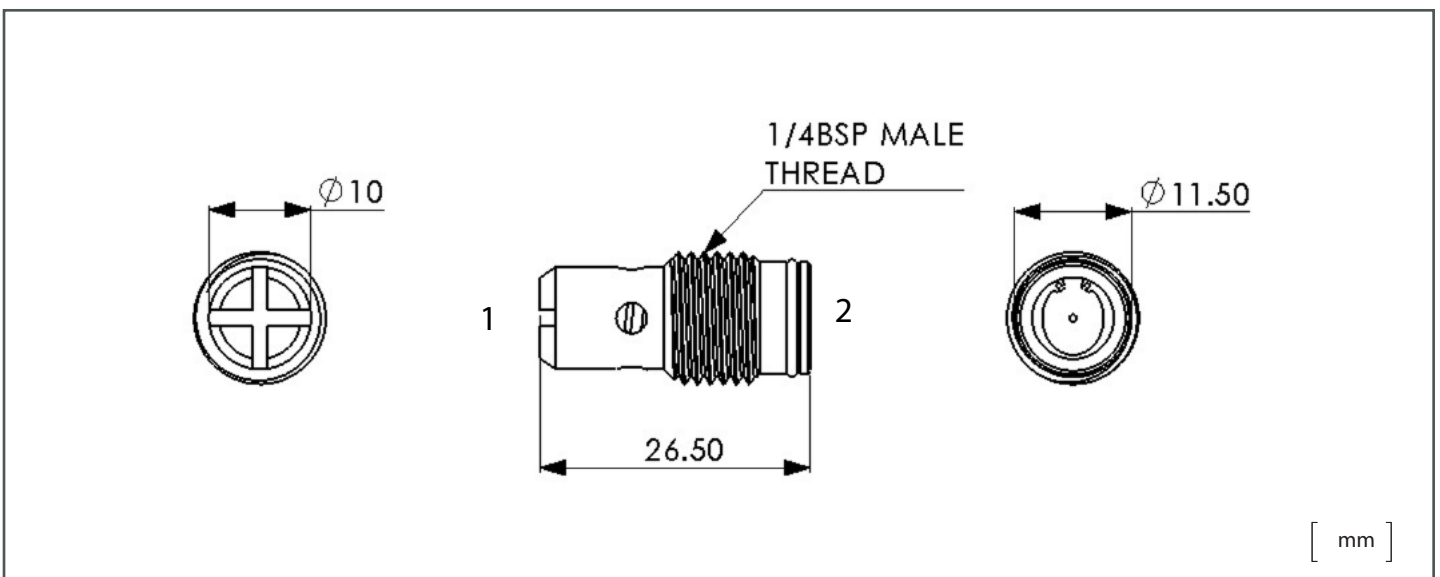
Technical data

Mineral oil	ISO 6743/4 (DIN 51524)	
Oil viscosity	15-250 mm ² /s (15 to 250 cSt)	
Max contamination index with filter	ISO 4406:1999 Classe 19/17/14	
Oil temperature	-20°C +80°C	-4°F + 176°F
Ambient temperature	-20°C +50°C	-4°F + 122°F

NOTE: It is advised to install a filter, to protect the valve (advised filtration 15 µm)

Type	Max flow l/min- (USgpm)	Max pressure bar- (PSI)	Tightening torque Nm-(lbt ft)	Approx weight kg -(lb)
A104012-1	16 (4.23)	210(3625)	(Push insert)	0,150 (0.33)

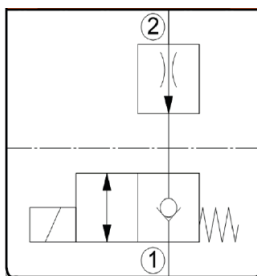
Higher accuracy can be achieved +/- 5 % on request. Please contact Pro E Con for more information.





Ordering code	01 A104021-4	02	03
---------------	-----------------	----	----

Hydraulic circuit

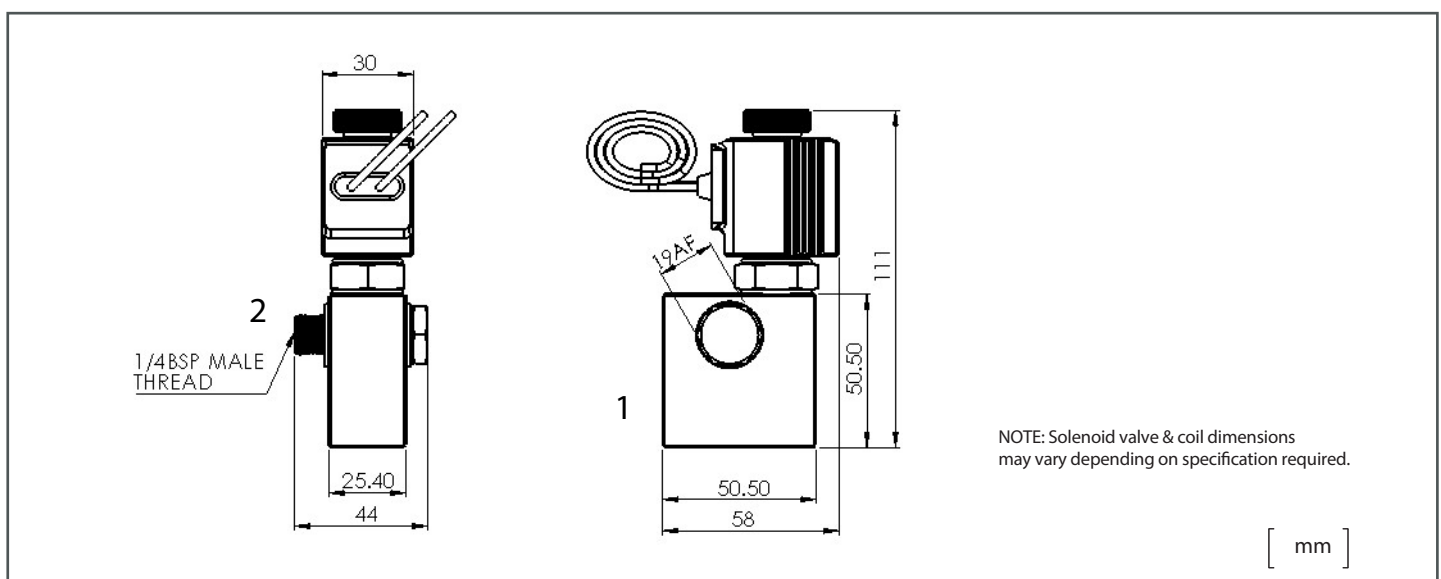


Technical data

Mineral oil	ISO 6743/4 (DIN 51524)		
Oil viscosity	15-250 mm ² /s (15 to 250 cSt)		
Max contamination index with filter	ISO 4406:1999 Classe 19/17/14		
Oil temperature	-20°C +80°C	-4°F + 176°F	
Ambient temperature	-20°C +50°C	-4°F + 122°F	
NOTE: It is advised to install a filter, to protect the valve (advised filtration 15 µm)			

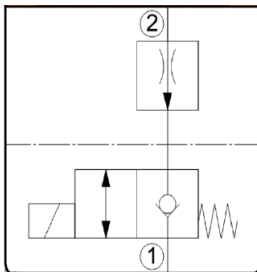
01	(Banjo Mounted - Single Lock Valve Assembly)	A104016-4
02	(Controlled flow at 100 bar ± 15 %)	0.5 l/min (0.13 USgpm) 005
		0.8 l/min (0.21 USgpm) 008
		1.0 l/min (0.26 USgpm) 010
		1.2 l/min (0.32 USgpm) 012
		1.5 l/min (0.40 USgpm) 015
		1.7 l/min (0.45 USgpm) 017
		2.0 l/min (0.53 USgpm) 020
		2.5 l/min (0.66 USgpm) 025
		3.0 l/min (0.79 USgpm) 030
		4.0 l/min (1.05 USgpm) 040
		5.0 l/min (1.32 USgpm) 050
		6.4 l/min (1.69 USgpm) 064
		7.5 l/min (1.98 USgpm) 075
		8.0 l/min (2.11 USgpm) 080
		9.0 l/min (2.38 USgpm) 090
		10.0 l/min (2.64 USgpm) 100
11.5 l/min (3.04 USgpm) 115		
13.7 l/min (3.62 USgpm) 137		
16.0 l/min (4.23 USgpm) 160		
03	Voltage - 18W	12 Volts DC OA
		24 Volts DC OB
		24 Volts AC OL
		220 Volts AC ON
		24 Volts RAC OV
		110 Volts RAC OW
		220 Volts RAC OZ

Higher accuracy can be achieved +/- 5 % on request. Please contact Pro E Con for technical support & other options.





Hydraulic circuit



Ordering code	01 A104016-4	02	03
---------------	-----------------	----	----

01	(Banjo Mounted - Single Lock Valve Assembly)	A104016-4
02	(Controlled flow at 100 bar ± 15 %)	0.5 l/min (0.13 USgpm) 005
		0.8 l/min (0.21 USgpm) 008
		1.0 l/min (0.26 USgpm) 010
		1.2 l/min (0.32 USgpm) 012
		1.5 l/min (0.40 USgpm) 015
		1.7 l/min (0.45 USgpm) 017
		2.0 l/min (0.53 USgpm) 020
		2.5 l/min (0.66 USgpm) 025
		3.0 l/min (0.79 USgpm) 030
		4.0 l/min (1.05 USgpm) 040
		5.0 l/min (1.32 USgpm) 050
		6.4 l/min (1.69 USgpm) 064
		7.5 l/min (1.98 USgpm) 075
		8.0 l/min (2.11 USgpm) 080
		9.0 l/min (2.38 USgpm) 090
		10.0 l/min (2.64 USgpm) 100
11.5 l/min (3.04 USgpm) 115		
13.7 l/min (3.62 USgpm) 137		
16.0 l/min (4.23 USgpm) 160		
03	Voltage - 18W	12 Volts DC OA
		24 Volts DC OB
		24 Volts AC OL
		220 Volts AC ON
		24 Volts RAC OV
		110 Volts RAC OW
		220 Volts RAC OZ

Technical data

Mineral oil	ISO 6743/4 (DIN 51524)
Oil viscosity	15-250 mm ² /s (15 to 250 cSt)
Max contamination index with filter	ISO 4406:1999 Classe 19/17/14
Oil temperature	-20°C +80°C -4°F + 176°F
Ambient temperature	-20°C +50°C -4°F + 122°F
NOTE: It is advised to install a filter, to protect the valve (advised filtration 15 µm)	

Higher accuracy can be achieved +/- 5 % on request. Please contact Pro E Con for technical support & other options.

2

3/8 BSP MALE THREAD

1

NOTE: Solenoid valve & coil dimensions may vary depending on specification required.

[mm]