

The image shows the interior of a restaurant named 'Dariana'. The space is characterized by high ceilings with large, ornate chandeliers and arched windows that offer a view of a city. The floor is made of dark wood in a herringbone pattern. In the center, there is a large, round, marble-topped table with a dark metal base that has built-in shelves for books. The walls are decorated with arched alcoves and green upholstered seating. The overall atmosphere is elegant and sophisticated.

Dariana



Dariana

About us

Located above the London Designer Outlet in North West London's most vibrant creative neighbourhood, Dariana provides an elegant and intimate setting for your dream event. Our stylish, light-filled, versatile event spaces offer a perfect blend of sophistication and comfort, tailored to suit your unique celebration.

The stunning 15th and 16th floors offer breathtaking panoramic city views, making your event a truly unforgettable experience.

Whether you're planning an intimate celebration with close family and friends or a grand party with all your loved ones, Dariana's versatile spaces can accommodate your event with seamless service and attention to detail.



16th Floor

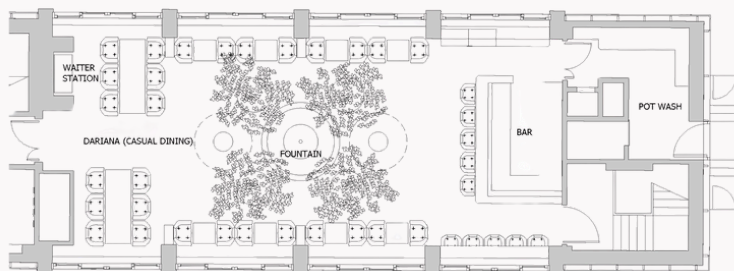
The Sky Garden & Lounge Bar

This versatile space, a luxurious retractable rooftop retreat, adorned with indoor olive trees and centred around a soothing stone fountain. Discover the art of our stunning centrepiece, a 360° bar that stands as the heart of our lounge bar in the clouds.



16th Floor

Sky Garden



Size: 1121.5 sq m | 1308 sq ft

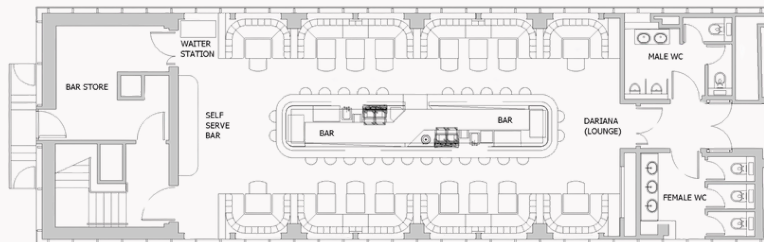
Seated meal - 60 people

Relaxed - 100 people



16th Floor

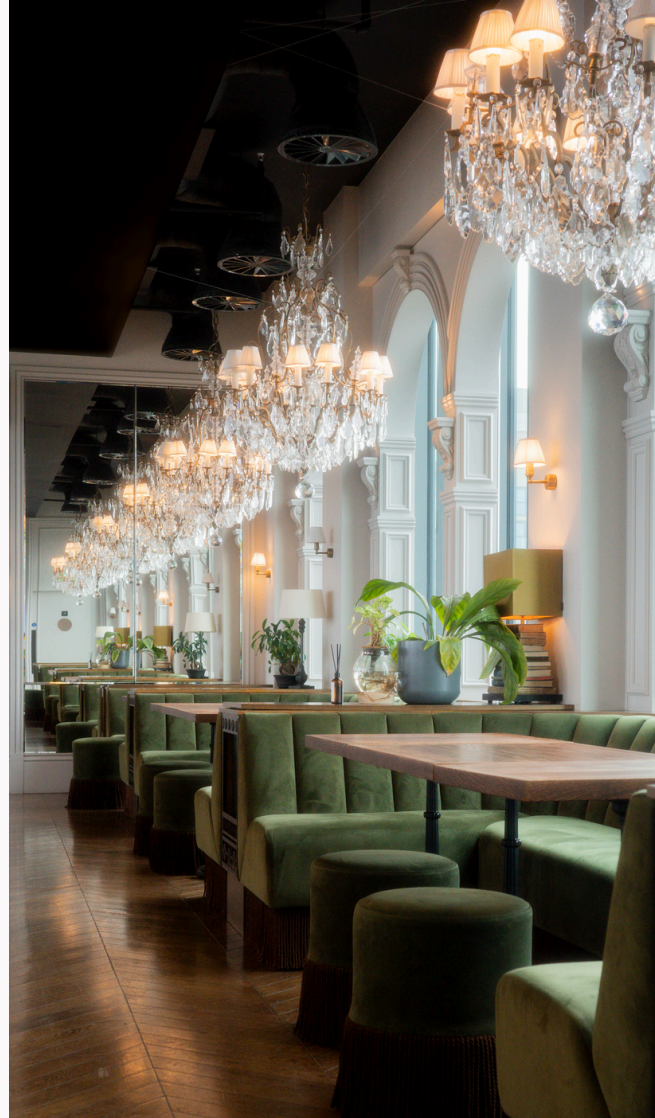
Lounge Bar



Capacity: 116 sq m | 1249 sq ft

Seated meal - 60 people

Relaxed - 100 people



15th Floor

The Banquet Hall

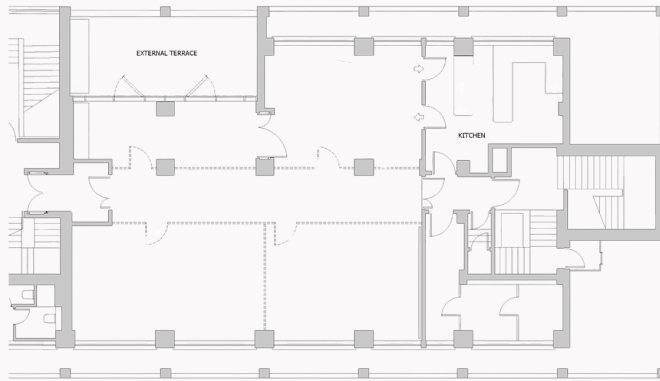
The 15th-floor space - versatile, spacious, and equipped with an adaptable multifunctional hall, ready to transform your vision into reality. With the flexibility of expansion and enclosure, the partition walls offer personalised space arrangements and layouts to your preference.

121.4 sq m | 1307 sq ft



15th Floor

The Banquet Hall



Capacity: 100



Venue Dry Hire Pricing

High Season (May, June, July, August, September & December)

Day	Sky & Lounge	Sky Only	Lounge Only	15th Only	All Three
Mon – Thu	£4,200	£3,000	£3,000	£3,000	£6,000
Fri – Sun	£5,400	£4,200	£4,200	£4,200	£8,400

Low Season (January, February, March, April, October & November)

Day	Sky & Lounge	Sky Only	Lounge Only	15th Only	All Three
Mon – Thu	£3,500	£2,500	£2,500	£2,500	£4,500
Fri – Sun	£4,200	£3,000	£3,000	£3,000	£6,000

Prices all including VAT







Get in Touch

enquiries@dariana.co.uk

07377 733080

www.dariana.co.uk