

Hemsec SIPs

Leisure Case Studies

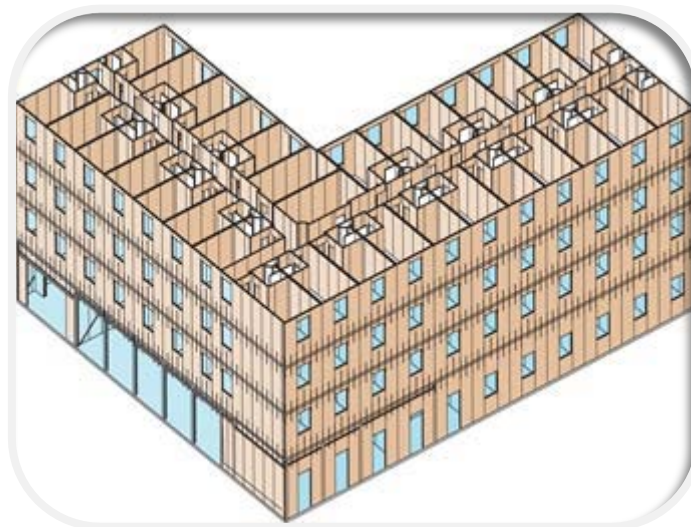


Days Inn Hotel Nuneaton

11'000m²
100mm / 125mm SIP

A new hotel constructed for the Days Inn hotel chain at Nuneaton in Warwickshire was the UK's first building where Structural Insulated Panels (SIPs) technology had been used up to four storeys. Structural testing for the project showed that it could withstand up to 48 tonnes of stress which is unheard of with traditional materials.

The pictures below show how Hemsec SIPs integrated with other elements such as steelwork (open plan foyer area), Bison beam concrete floors and traditional timber trussed roof to form the 101 bed hotel for Days Inn.



Drawing indicating the West and South elevations.

Hemsec SIPs

Leisure Case Studies



Ground floor Hemsec SIPs internal load bearing walls.



First floor main corridor ready for Bison beam installation.



Installation of Bison beams direct onto Hemsec SIPs load bearing walls.

Hemsec SIPs

Leisure Case Studies



Bison beams seated onto the load bearing Hemsec SIPs walls.



Hemsec SIPs external walls integrated with the foyer steelwork.



Windows fitted to Hemsec SIPs external walls prior to external brick finish

Hemsec SIPs

Leisure Case Studies



Bison beams being installed onto Hemsec SIPs structure



Hemsec SIPs external walls being fitted with breather membrane and external brick skin being installed.



Trussed roof being installed directly onto the Hemsec SIPs structure.