



# Mapping Suffolk's Ancient Trees

Hannah Alred

Suffolk Biodiversity Information Service

[Hannah.Alred@suffolk.gov.uk](mailto:Hannah.Alred@suffolk.gov.uk)



# SBIS for short!



## Who are we?

Local Environmental Record Centre

Non-profit organisation hosted by Suffolk County Council

Custodians of Suffolk's biodiversity data

Hold over 6 million species records

## Data sources:

- Volunteers
- Local experts
- Surveys
- County recorders
- Wildlife groups
- Consultants



[www.suffolkbis.org.uk](http://www.suffolkbis.org.uk)



# Mapping Ancient Trees with STWN

## Why Record Ancient Trees?

- Identifying and protecting our natural heritage
- Understanding their distribution
- Informing conservation efforts
- Highlighting their importance to the wider community
- Creating a valuable resource for future generations



Tea Party Oak at Ickworth (Photo credit: Feadora Morris)



# What to record

ID

Survey Date

Verified Date

Measured Girth (m)

Measured Height (m)

Girth measurement an estimate?

Latitude

Longitude

Grid Reference

Species

Tree Form

Recorder

Local Name

Town

Standing Status

Living Status

Public Access Notes

Veteran Status

Condition

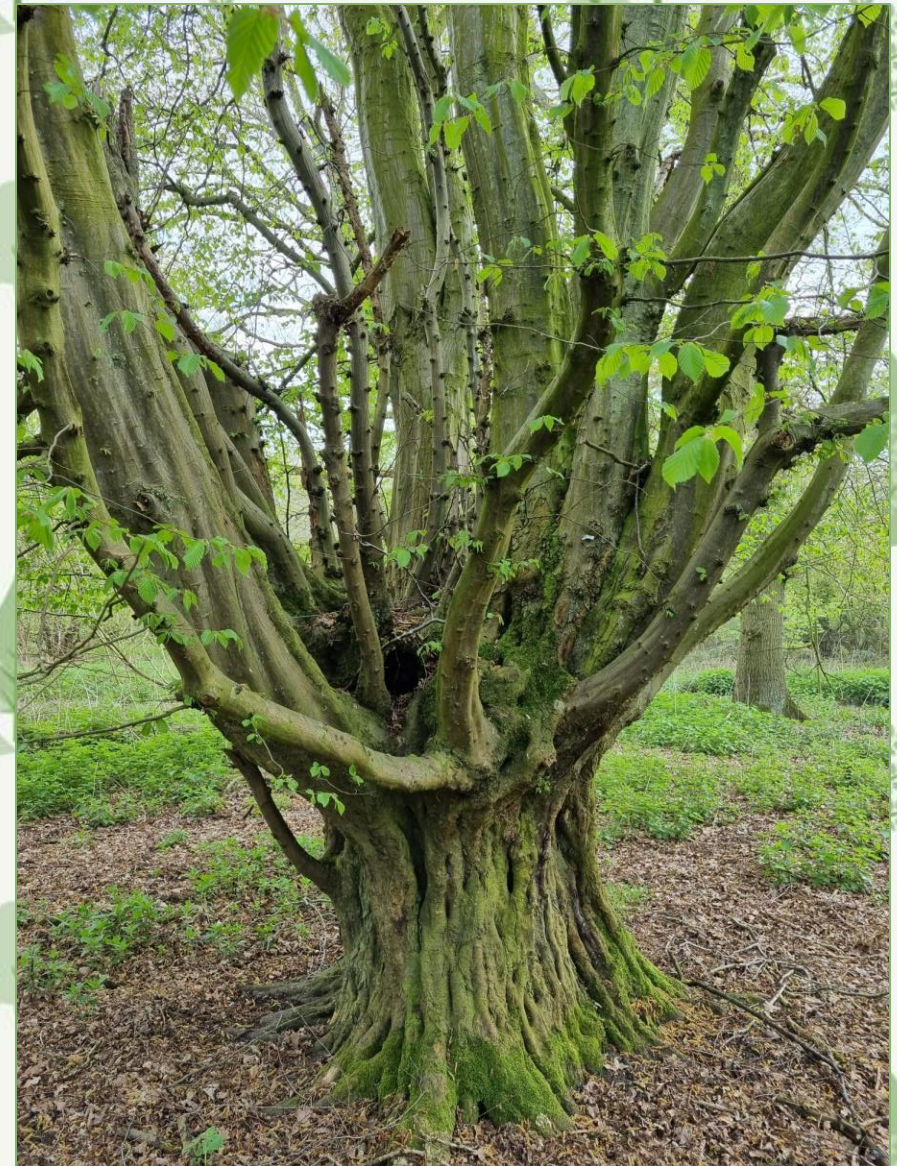
Threat

Protection

Special Status

Epiphyte

Fungus



Burgate Wood Hornbeam Photo credit: David Appleton

AutoSave Off

Ancient Tree Recording Form.xlsx - Excel

Search

Hannah Alred

FileHomeInsertDrawPage LayoutFormulasDataReviewViewAutomateHelp

CutCopyFormat Painter

Paste

Clipboard

Calibri11

A<sup>+</sup>A<sup>-</sup>

BIBU

Font

Wrap Text

Alignment

General

Number

Conditional Formatting

Format as Table

NormalBadGoodNeutralCalculationCheck Cell

Styles

InsertDeleteFormat

Cells

AutoSumFillClear

Editing

Sort & FilterFind & Select

Editing

Analyze Data

Analysis

Add-ins

Add-ins

CommentsShare

A1

Columns

	A	B	C	D	E	F	G	H	I	J	K	
1	Columns	ID	Survey Date	Verified Date	Measured Girth (m)	Measured Height (m)	Girth measurement an estimate?	Latitude	Longitude	Grid Reference	Species	Tr
2												
3	Example tree record	58525	27/08/2021	27/08/2021	7	1.5	FALSE	52.105532	1.4439251	TM35945084	Pedunculate oak	Pc
4	Example tree record	221336	03/02/2024	03/02/2024	6.08	1.5	FALSE	52.1093334	1.44280132	TM3584351259	Pedunculate oak	M
5	Example tree record	100182	02/04/2012	06/04/2012	5.38	2	FALSE	52.101174	1.4437789	TM3595350355	Pedunculate oak	M
6	Enter tree records here >											
7												
8												
9												
10												
11												
12												
13												
14												
15												
16												
17												
18												
19												
20												
21												

Ancient Tree Recording Form

Do not edit

ReadyAccessibility: Good to go

Display Settings

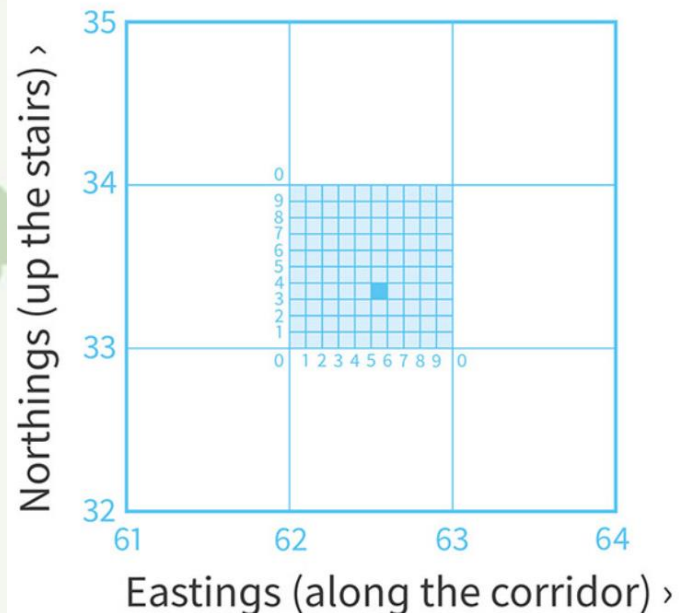
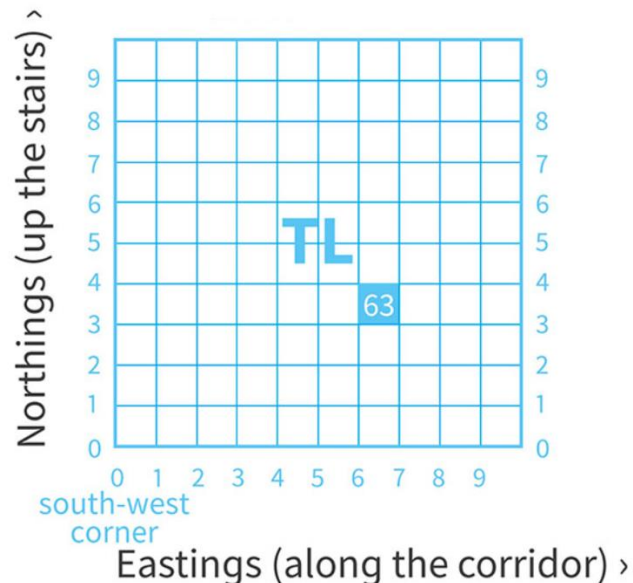
130%



# Grid References

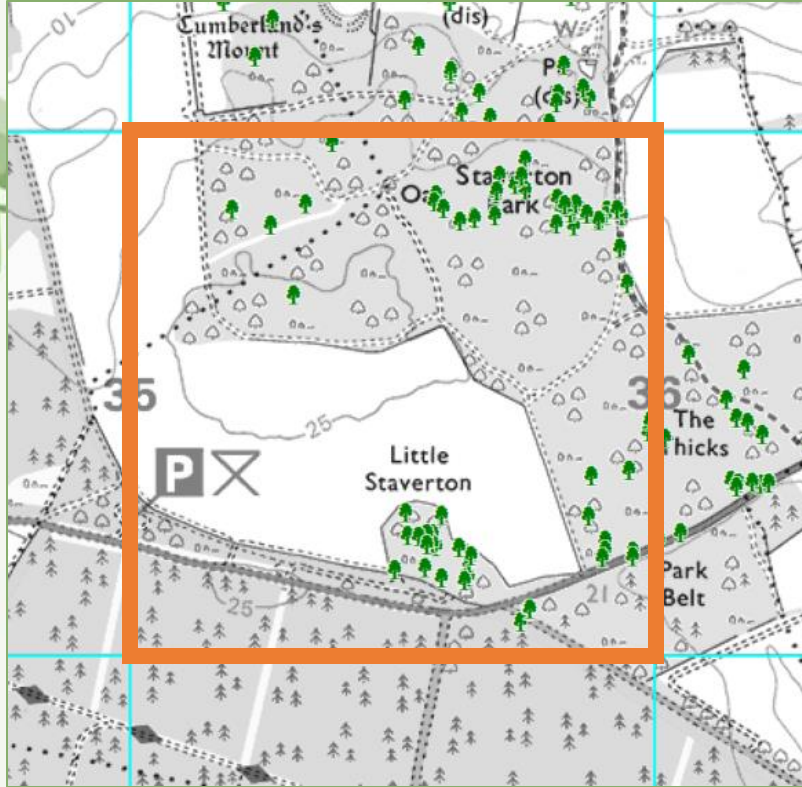
## Why so important?

- Accurate mapping is key to making our data useful.
- Finding a tree is not always that easy ...
- Works by dividing the map into a grid of squares, with each square having a unique reference
- Suffolk covered by TM and TL grids
- Further divided into smaller squares – TL 63 and TL 625 333



			HO	HP		
			HT	HU		
	HW	HX	HY	HZ		
NA	NB	NC	ND	NE		
NF	NG	NH	NJ	NK		
NL	NM	NN	NO	NP		
	NR	NS	NT	NU		
	NW	NX	NY	NZ	OV	
		SC	SD	SE	TA	
		SH	SJ	SK	TF	TG
	SM	SN	SO	SP	TL	TM
	SR	SS	ST	SU	TQ	TR
SV	SW	SX	SY	SZ	TV	

TM 35 50



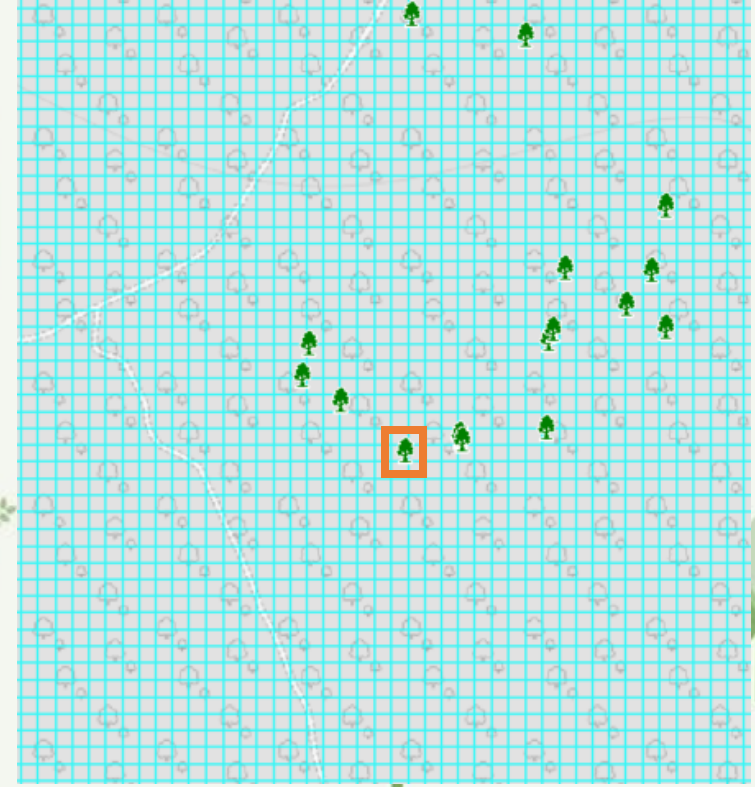
1 km x 1 km

TM 356 508



100 m x 100 m

TM 35631 50830

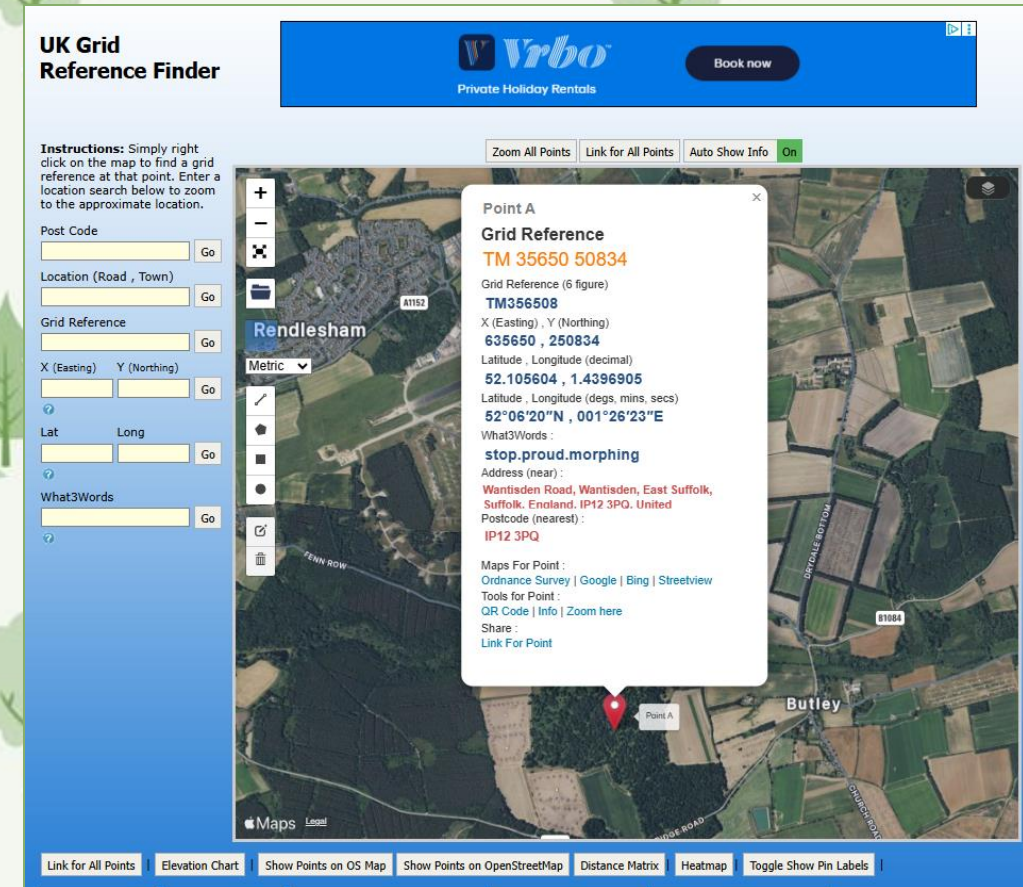
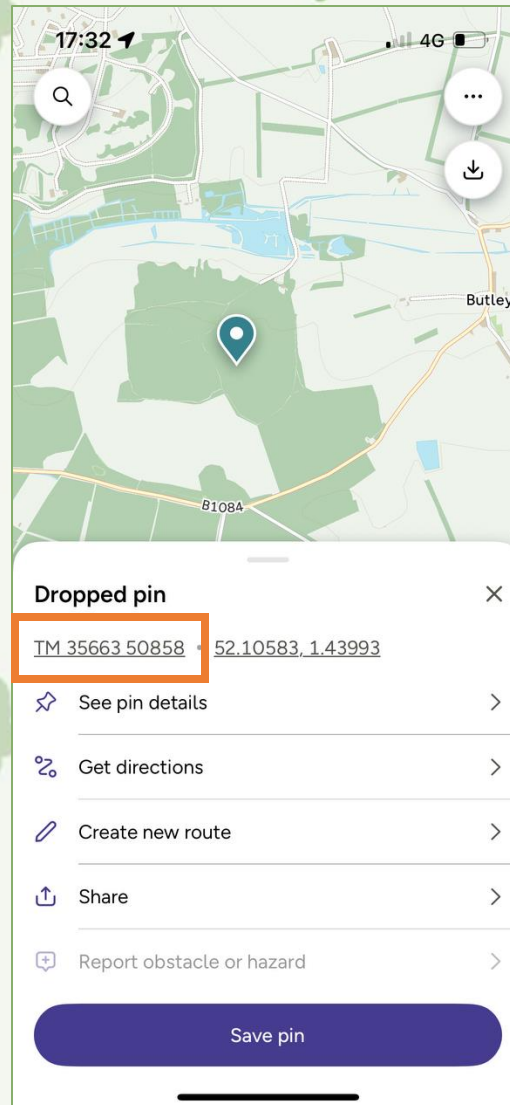


1 m x 1 m



# Obtaining a 10-Figure Grid Reference

- Smartphone Apps:
  - OS Locate App (Ordnance Survey)
  - What3words (useful for cross-referencing, but use GR for data)
- GPS Devices: Handheld GPS units
- Online Mapping Tools:
  - OS Leisure Maps website
  - Grid Reference Finder website



<https://gridreferencefinder.com>



## Suffolk Ancient, Veteran and Notable Trees

### Legend

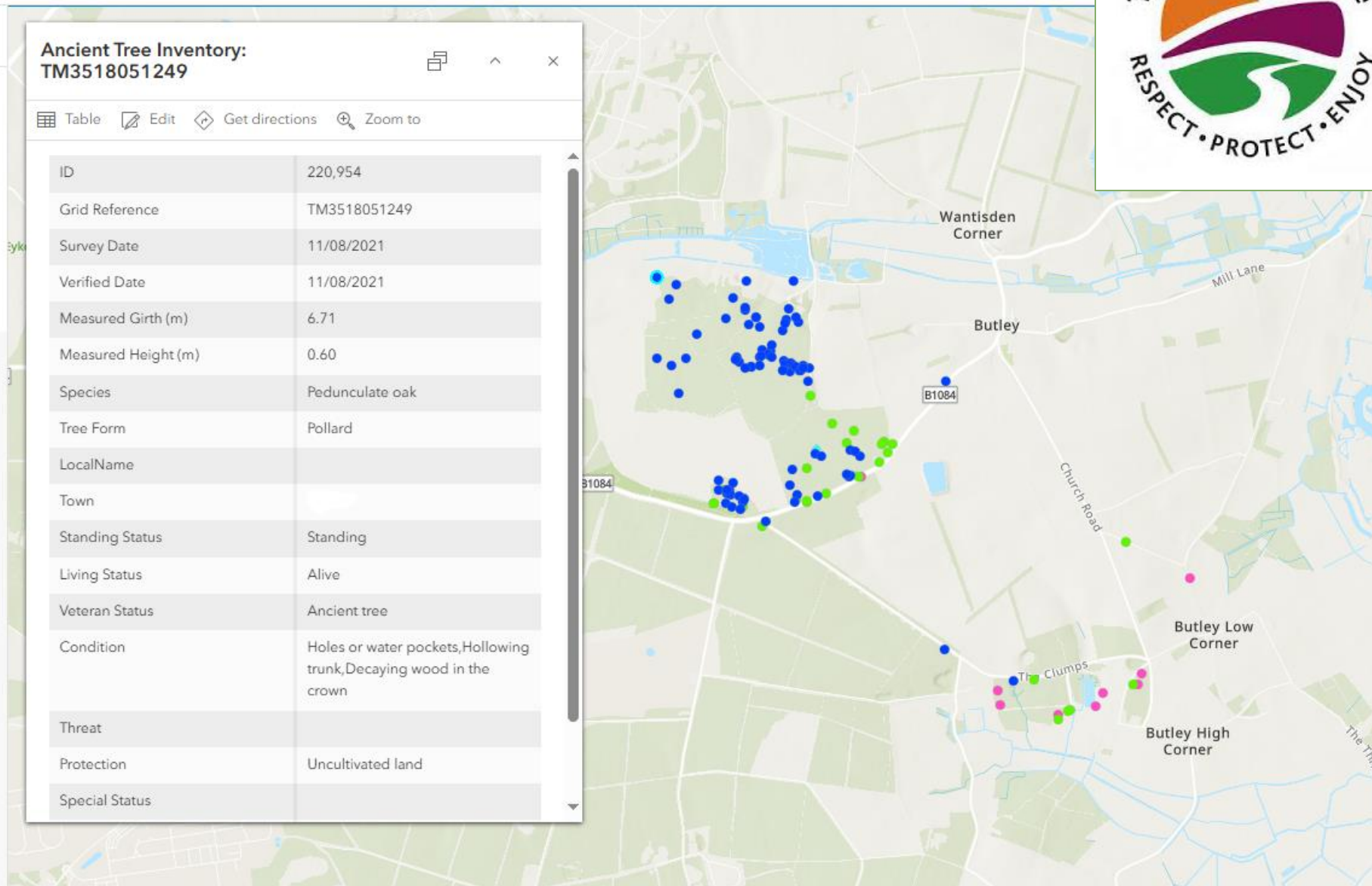
#### Suffolk ATI

- Ancient tree
- Veteran tree
- Notable tree
- Lost Ancient tree
- Lost Veteran tree
- Lost Notable tree

### Ancient Tree Inventory: TM3518051249

Table Edit Get directions Zoom to

ID	220,954
Grid Reference	TM3518051249
Survey Date	11/08/2021
Verified Date	11/08/2021
Measured Girth (m)	6.71
Measured Height (m)	0.60
Species	Pedunculate oak
Tree Form	Pollard
LocalName	
Town	
Standing Status	Standing
Living Status	Alive
Veteran Status	Ancient tree
Condition	Holes or water pockets,Hollowing trunk,Decaying wood in the crown
Threat	
Protection	Uncultivated land
Special Status	







Sweet chestnut at Redgrave Park Photo credit: David Appleton

Thanks for listening!