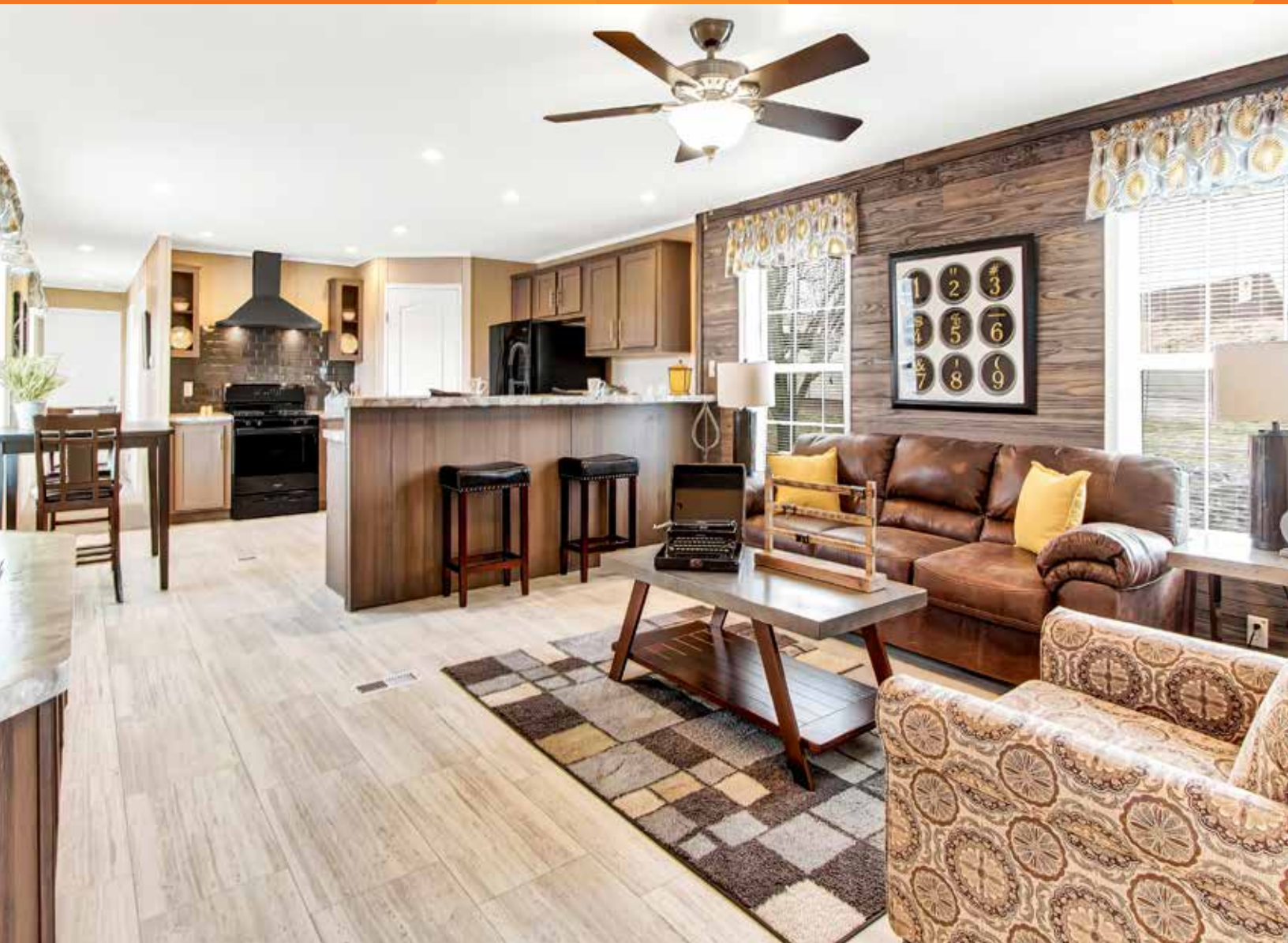


NORTHWOOD

SINGLE-SECTION







About us

Redman Homes is one of the oldest and most respected homebuilders in America. Founded in 1937, Redman pioneered factory home construction and continues to lead advances in quality control, design and home value today. Through experience and innovation we've harnessed production line efficiency and, paired with our high-quality craftsmanship, created a process that delivers homes that meet our superior standards.

A place to call your own

Beyond just building you a house, we're committed to providing you and your family with a home to make memories in that will last a lifetime. Somewhere you can feel secure. A place you can call your own. A home that fits your lifestyle and has your own personal touch. Whether you're an active young family constantly on the go or empty nesters ready to simplify, just relax – we have a home that's right for you.

More choice, more freedom

Our vast selection of floor plans, color choices and options give you the freedom to express your personal style and fit your home around your life.

Building the best

We build each and every home to meet or exceed a strict national or state building code, and we set even higher standards for ourselves. Focusing on the things you don't see as well as the things you do, we monitor and inspect our homes at every stage of construction. From the plumbing system to the electrical wiring, from the kitchen cabinets to the closets in the bedrooms – every home we build undergoes rigorous quality inspections to ensure we're providing you with nothing but our best.

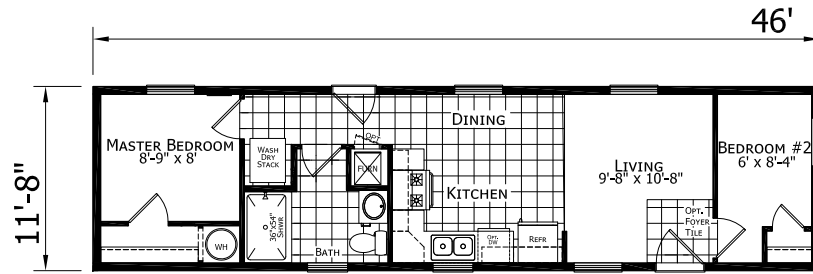
The quality you expect

To build the best, we use the best. To meet your expectations of quality – and ours – we use only the highest-quality building materials and trusted national brand names. From insulation and fixtures to flooring and appliances, we only buy components from suppliers who share our commitment to quality. By using the best, we're confident we can build you a home with the lasting value you'll appreciate for years to come. Your housing consultant can tell you more about the specific brands used in our homes.



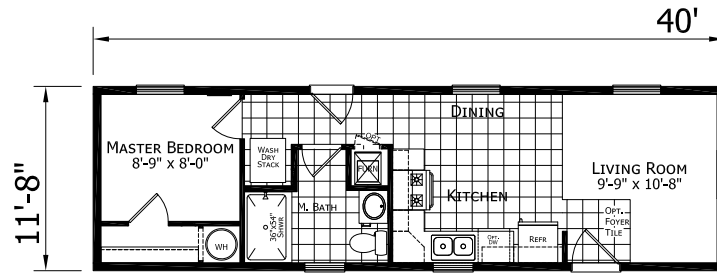
T24601

2 Bed-1 Bath
537 SQ. FT.



40' Option

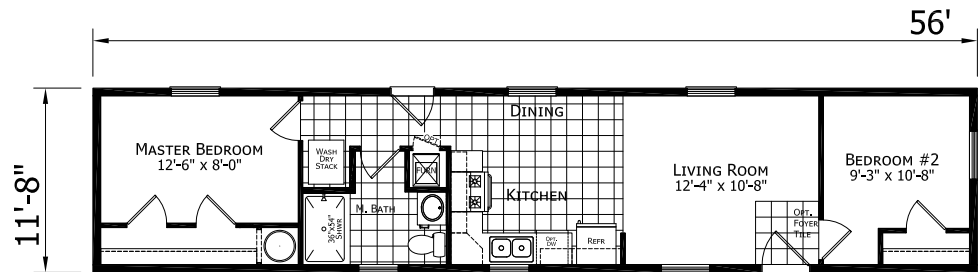
1 Bed-1 Bath
467 SQ. FT.



OPT

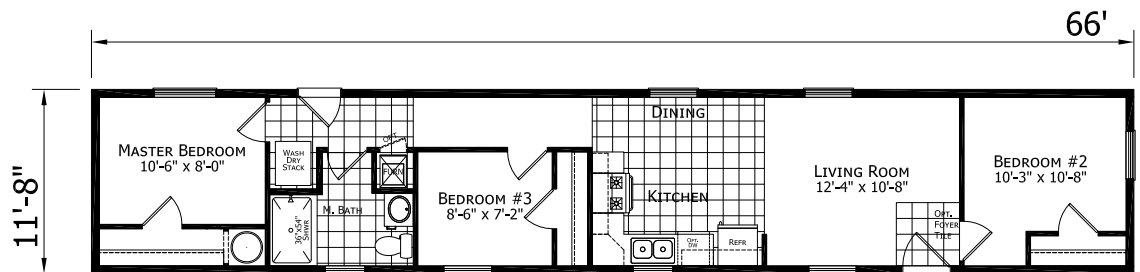
56' Option

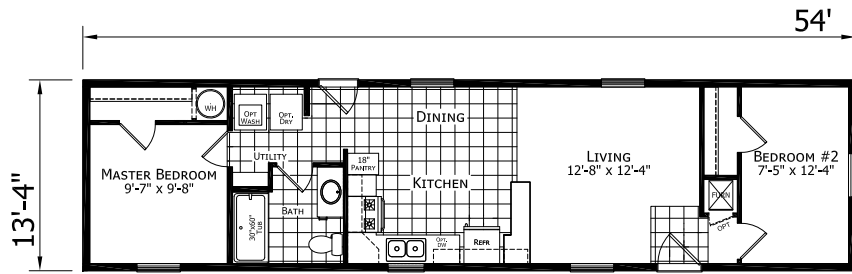
2 Bed-1 Bath
653 SQ. FT.



66' Option

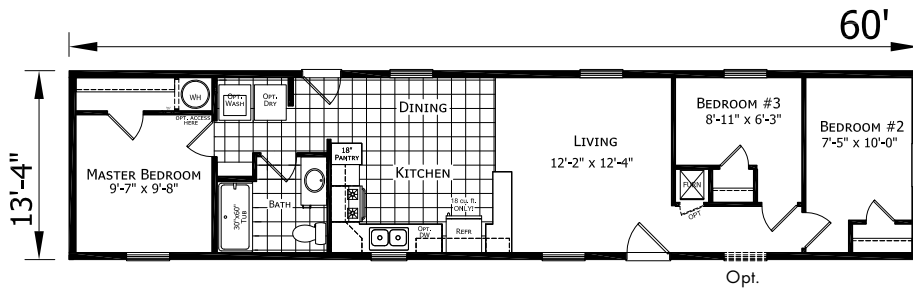
3 Bed-1 Bath
770 SQ. FT.





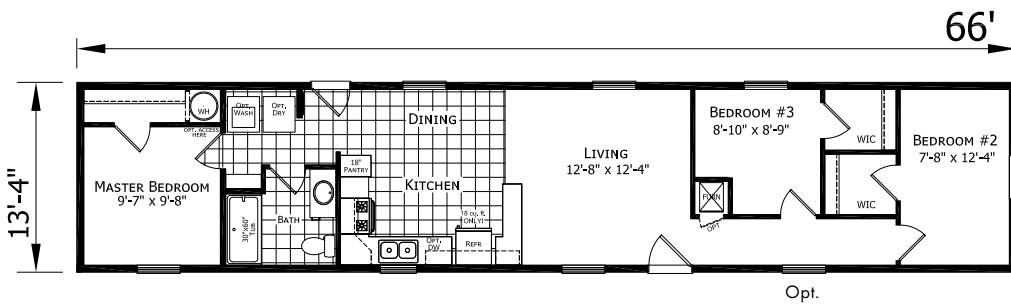
T25401

2 Bed-1 Bath
720 SQ. FT.



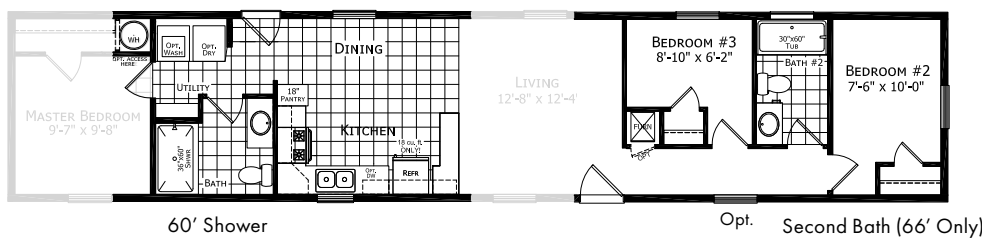
60' Option

3 Bed-1 Bath
800 SQ. FT.



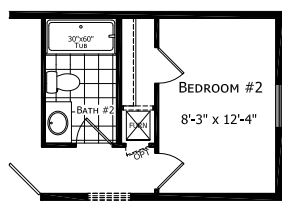
66' Option

3 Bed-1 Bath
880 SQ. FT.

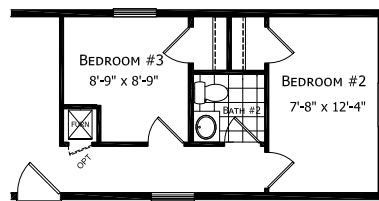


60' Shower

Opt. Second Bath (66' Only)

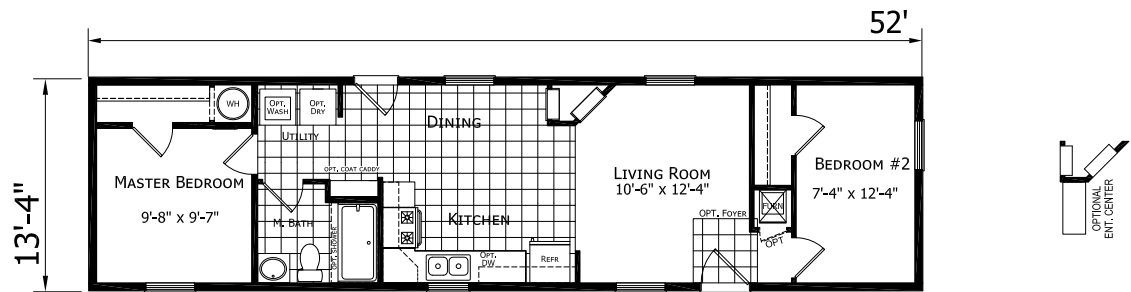


Opt. Two Bed - Two Bath
(60' Only)

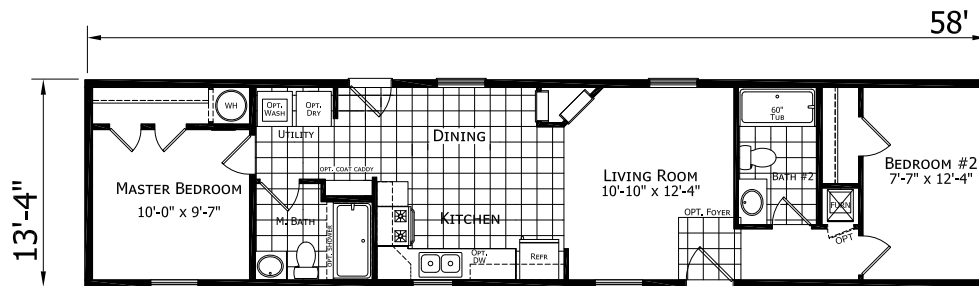


Opt. Half Bath (66' Only)

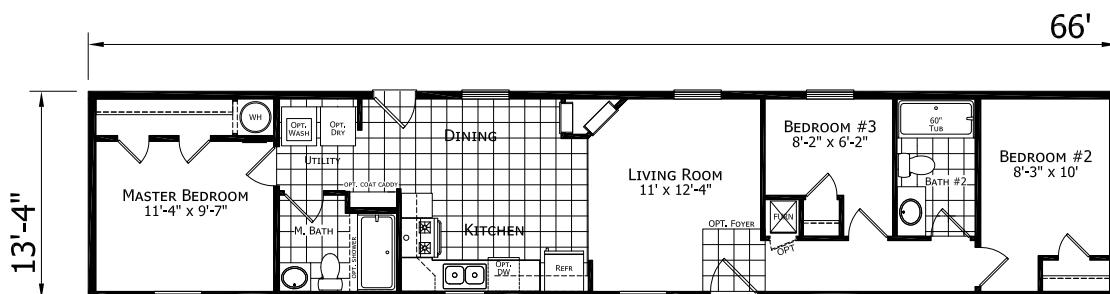
F25206 | 2 Bed-1 Bath
693 SQ. FT.



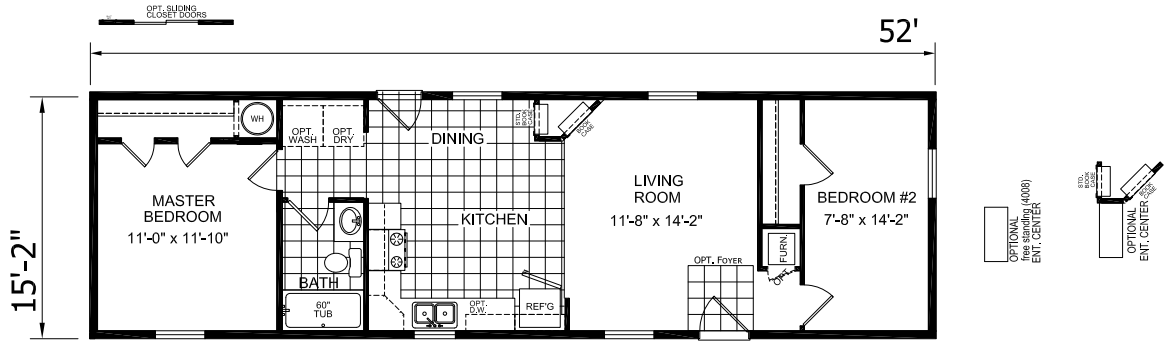
58' Option | 2 Bed-2 Bath
773 SQ. FT.



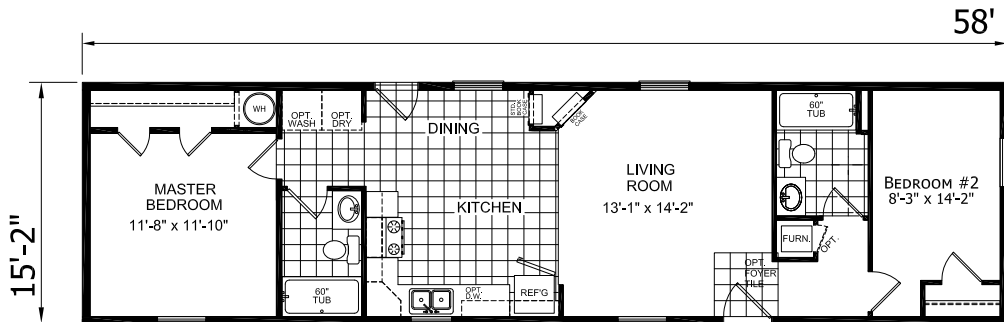
66' Option | 3 Bed-2 Bath
880 SQ. FT.



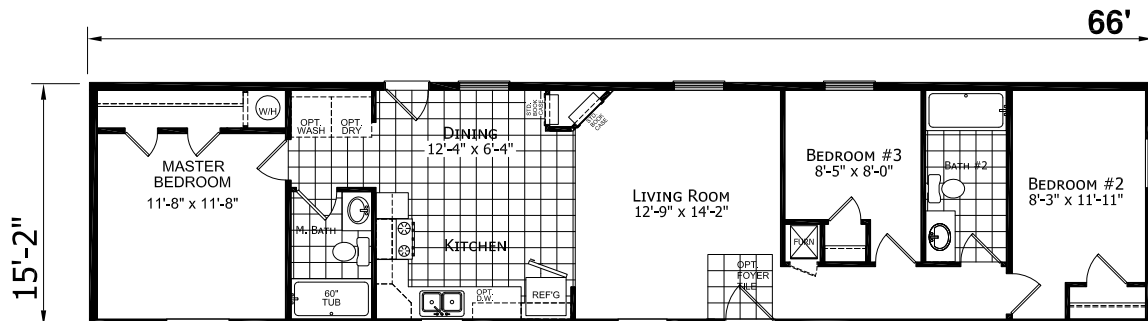
L25206 | 2 Bed-1 Bath
789 SQ. FT.



58' Option | 2 Bed-2 Bath
880 SQ. FT.



66' Option | 3 Bed-2 Bath
1001 SQ. FT.

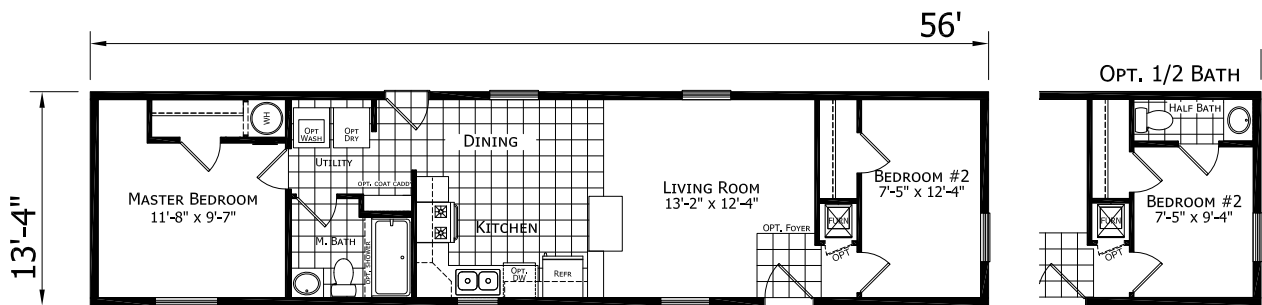




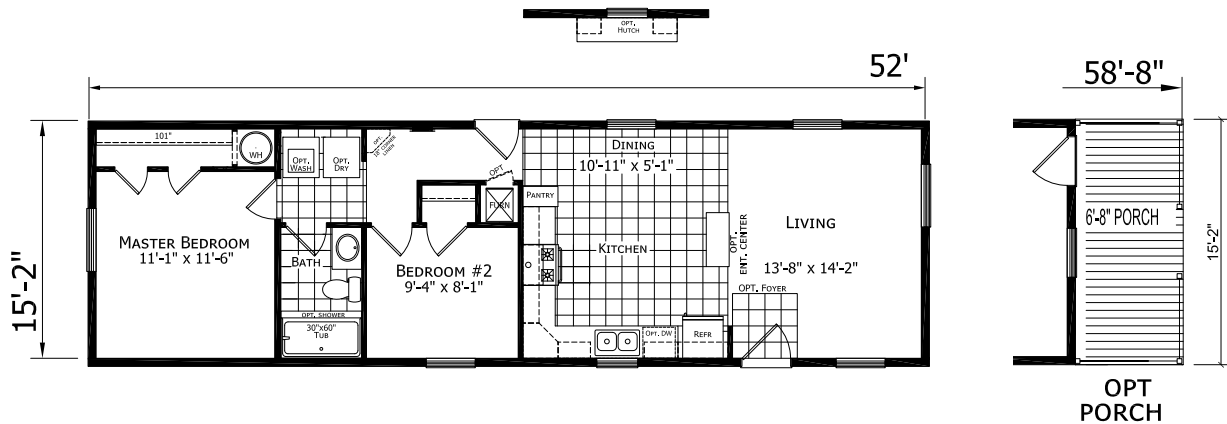
F26001 ▶

Shown with Optional Exterior

F25608 | 2 Bed-1 Bath
747 SQ. FT.

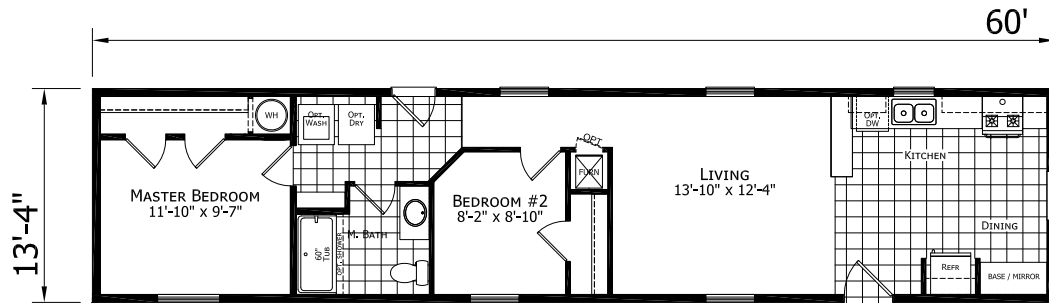


L25208 | 2 Bed-1 Bath
789 SQ. FT.



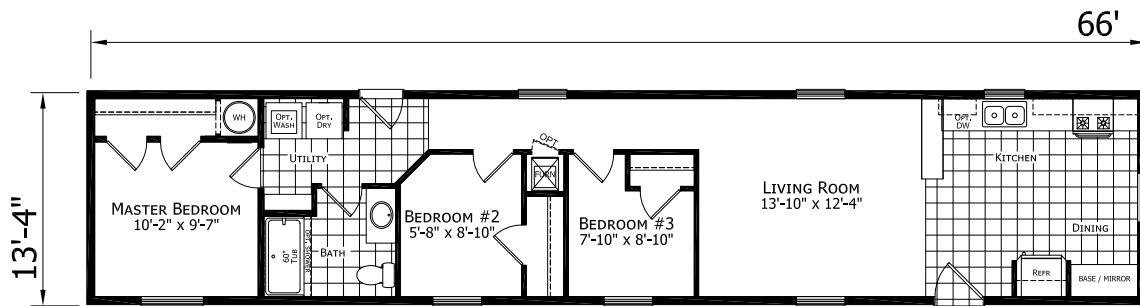
F26001

2 Bed-1 Bath
800 SQ. FT.



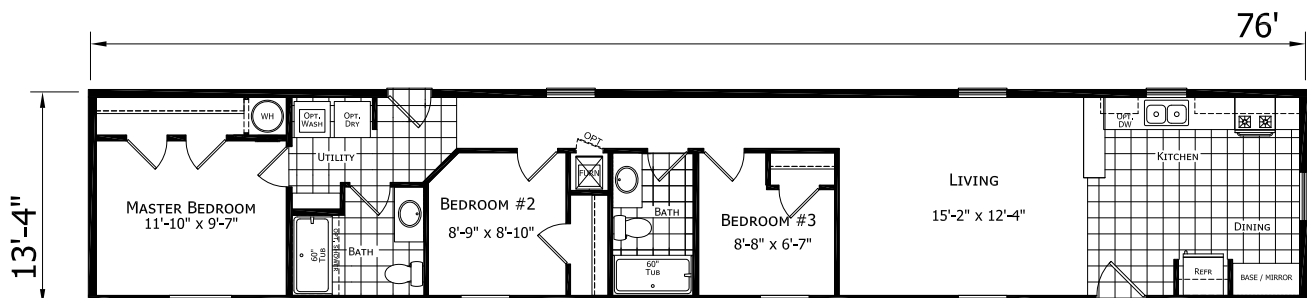
66' Option

3 Bed-1 Bath
880 SQ. FT.

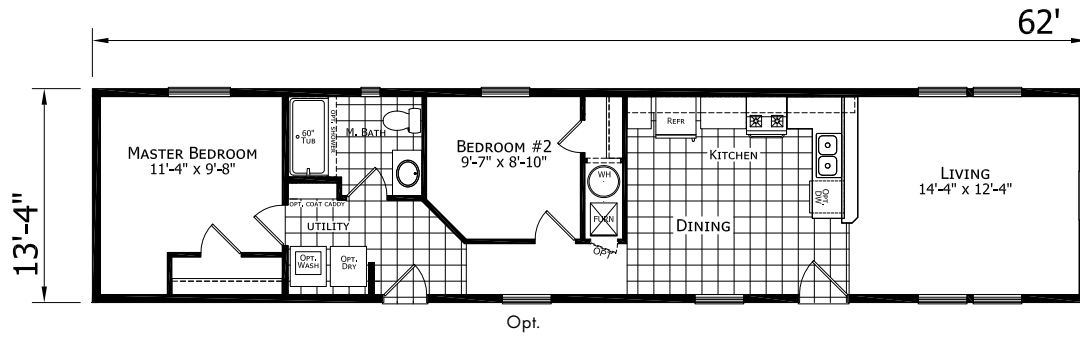


76' Option

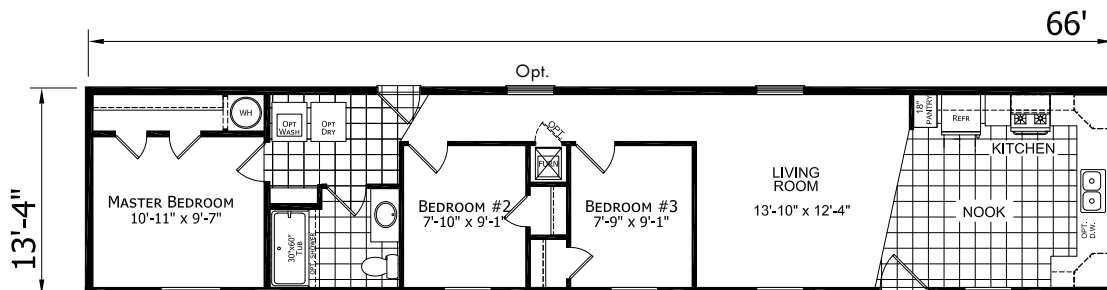
3 Bed-2 Bath
1013 SQ. FT.



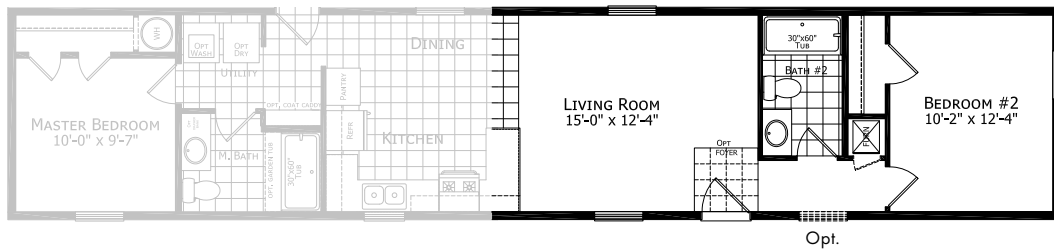
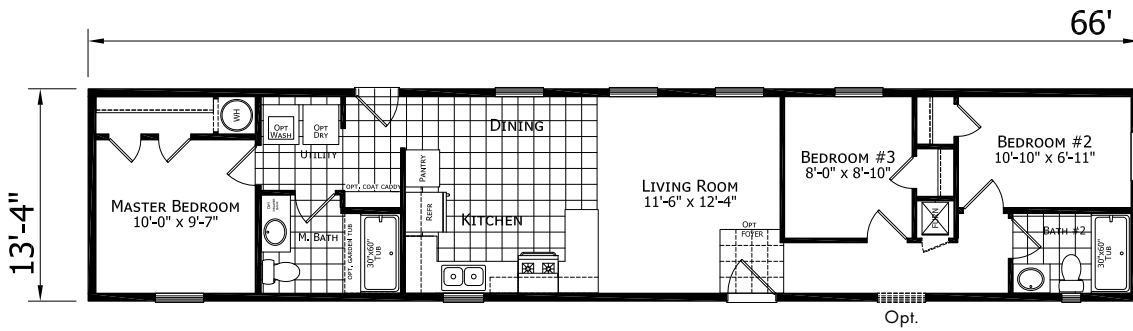
F26225 | 2 Bed-1 Bath
827 SQ. FT.



F26606 | 3 Bed-1 Bath
880 SQ. FT.

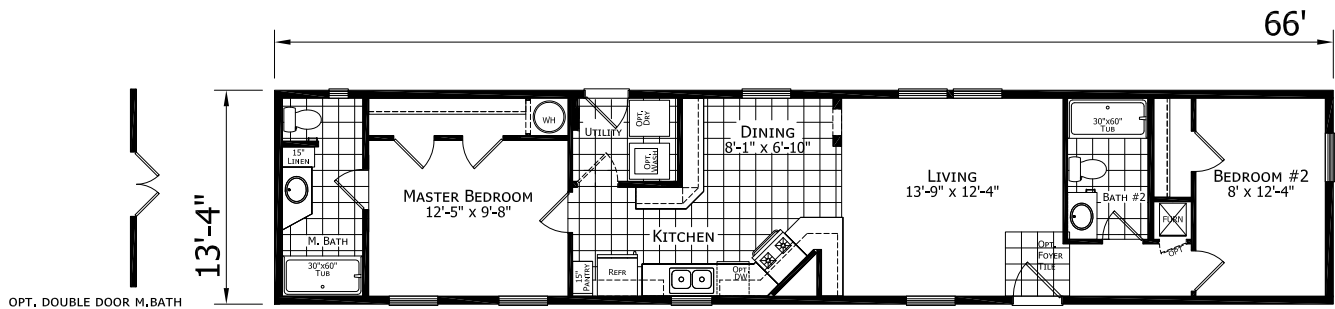


F26625 | 3 Bed-2 Bath 880 SQ. FT.

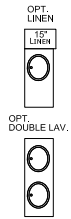


Shown with Standard Eyebrow

F46627 2 Bed-2 Bath 880 SQ. FT.



2 Bed-2 Bath
907 SQ. FT.

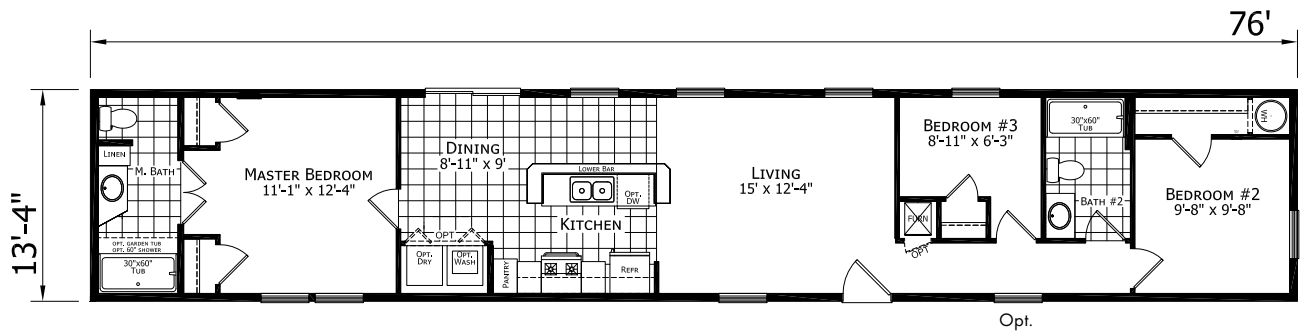


3 Bed-1 Bath
933 SQ. FT.



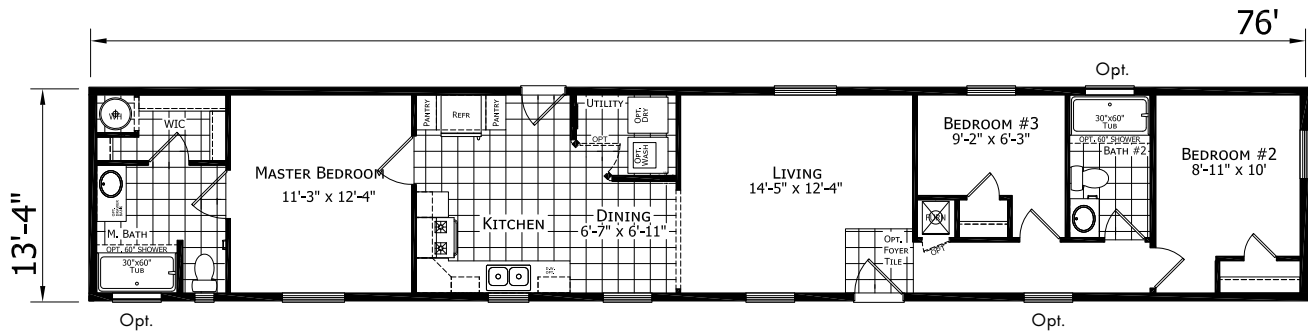
F27625

3 Bed-2 Bath
1013 SQ. FT.



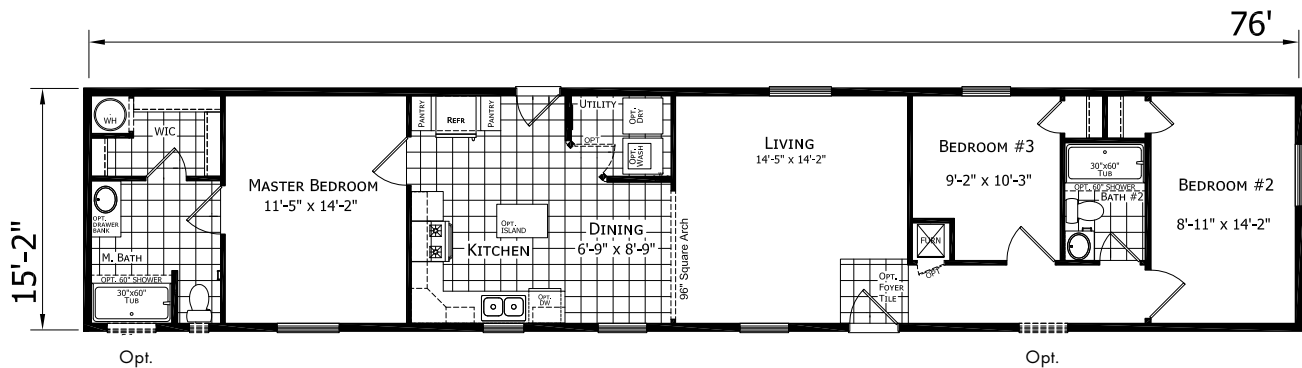
F27615

3 Bed-2 Bath
1013 SQ. FT.



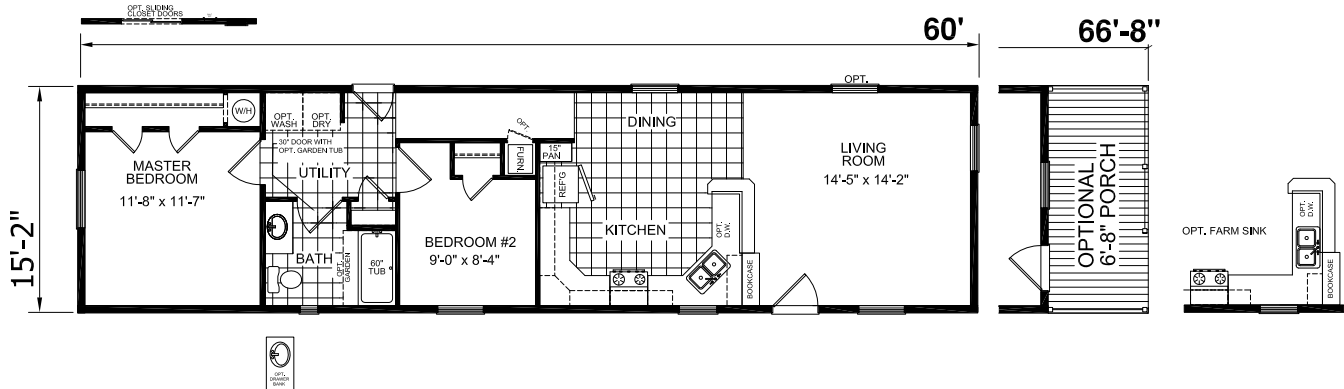
L27615

3 Bed-2 Bath
1153 SQ. FT.



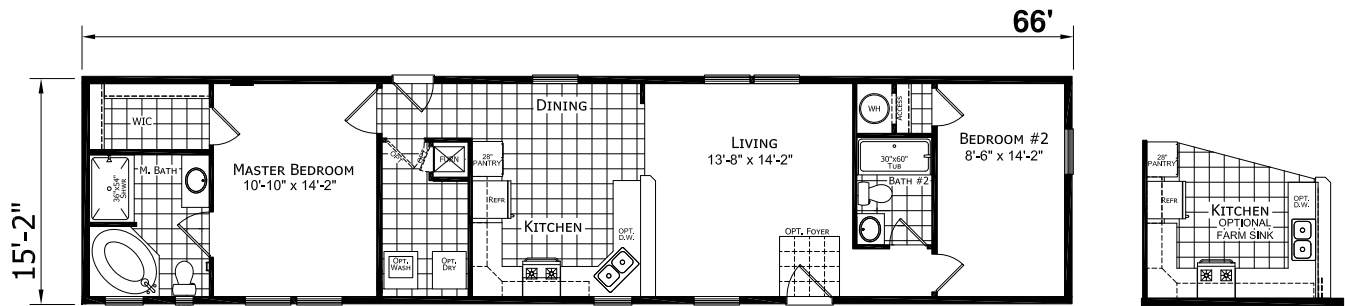
L26004

2 Bed-1 Bath
910 SQ. FT.



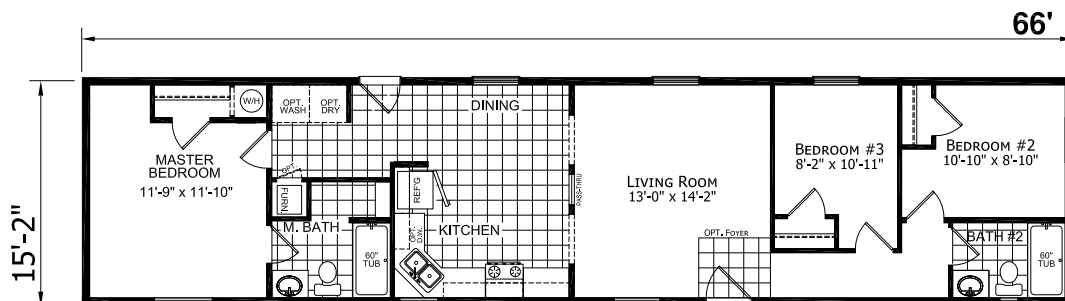
L26602

2 Bed-2 Bath
1001 SQ. FT.

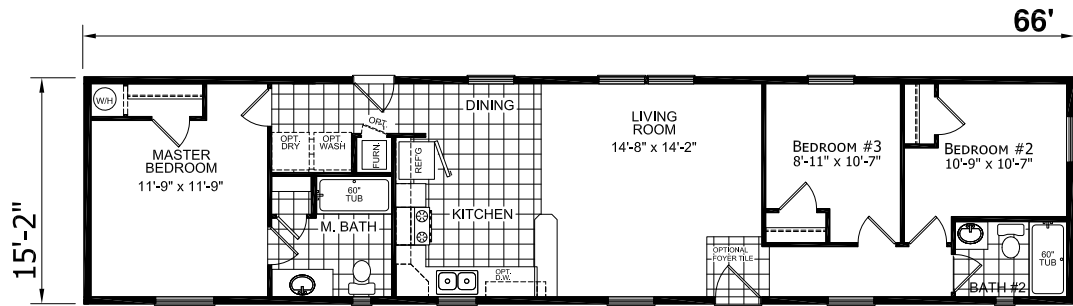


L26608

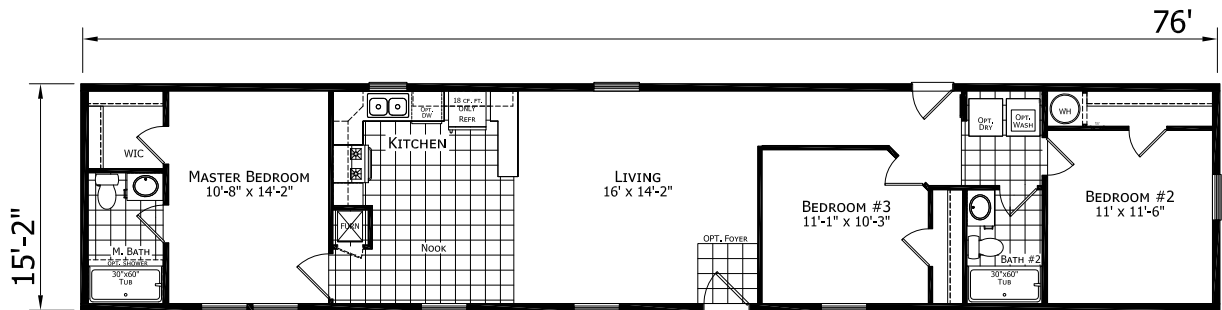
3 Bed-2 Bath
1001 SQ. FT.



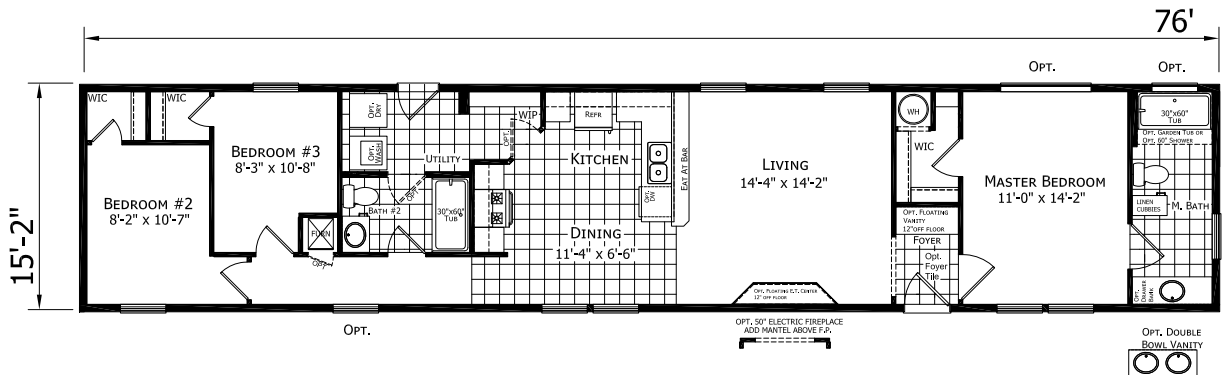
L26609 | 3 Bed-2 Bath
1001 SQ. FT.



L27612 | 3 Bed-2 Bath
1153 SQ. FT.



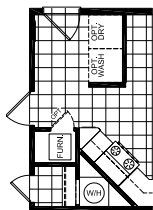
L27617 | 3 Bed-2 Bath
1153 SQ. FT.



3 Bed-2 Bath
1153 SQ. FT.



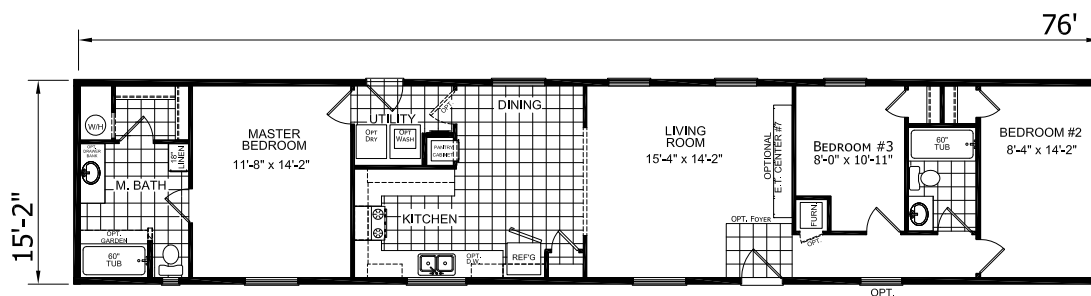
3 Bed-2 Bath
1153 SQ. FT.



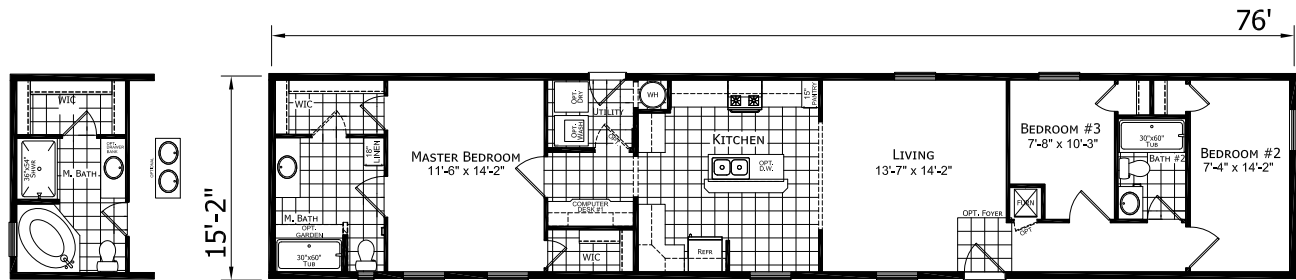
A floor plan diagram of a kitchenette. It features a sink labeled 'SINK' with a faucet, a stove labeled 'STOVE' with four burners, and a refrigerator labeled 'REF.' with a freezer compartment. There are two sets of 'SHELVES' and a 'CABINETS' area. A 'WASH' area is also indicated. The layout is compact and efficient for a small space.

BEDROOM #2
15'-2" x 14'-2"

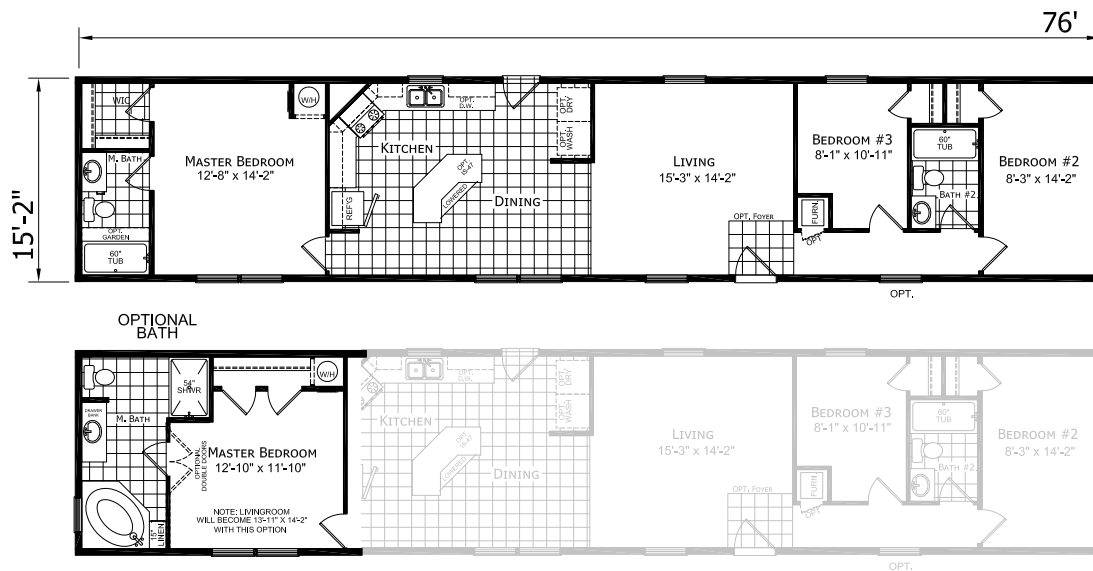
3 Bed-2 Bath
1153 SQ. FT.



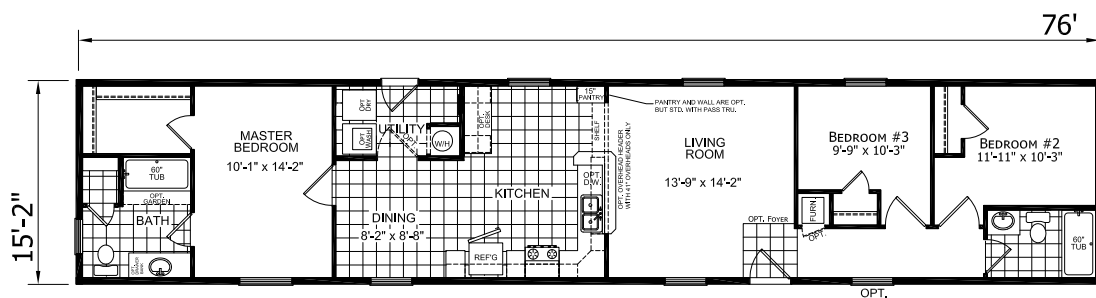
3 Bed-2 Bath
1153 SQ. FT.



3 Bed-2 Bath
1153 SQ. FT.



3 Bed-2 Bath
1153 SQ. FT.



EXTERIOR
ELEVATION OPTIONS



Standard Eyebrow (Where Applicable)



Walk A Bay



Single-Section Porch

NORTHWOOD SINGLE-SECTION

Construction

- 2x6 Floor Joists – 16" O.C. (16 Wide 2x8 – 16" O.C.)
- 2X6 Sidewalls – 16" O.C.
- 20 lb. Roof – 24" O.C.
- 8' Sidewalls – Flat Stomped Ceilings
- Vinyl Covered Drywall Throughout
- 3-Tab, 25-Year Shingles with Ridge Vent
- Marriage Line Gasket
- Heat Tape Receptacle
- Nominal 3/12 Roof
- R-11 Floor Insulation
- R-19 Sidewall Insulation
- R-22 Roof Insulation

Exterior

- 38" x 82" Sunburst Fiberglass Front Door (No Storm)
- 9-Lite Rear Door (No Storm)
- Deadbolts on Exterior Doors (Keyed Alike)
- Low-E Gridded Vinyl Windows – Per Plan
- Double Dutch Lap Vinyl Exterior Siding
- Shutters – Front Door Side / Hitchend

Interior

- Fabric Valance Throughout
- Choice of Décor
- National Brand Carpet
- 5 lb. Carpet Pad
- Vinyl in Wet Areas
- White Interior Doors with Knobs
- Vented Shelves in Closets
- Wire Shelf Over Washer/Dryer Area
- Mini Blinds Throughout
- Molding to Match Cabinetry Throughout

Plumbing & Heating

- Whole House Interior Water Shut-Off
- Plumb for Washer
- In-Line Heat Ducts
- 056 BTU Gas Furnace with Thermostat
- 30-Gallon Electric Water Heater

Electrical

- 100 Amp Electric Service
- LED Can Light at Kitchen Sink
- Tulip Light Bars in Bathrooms
- Switched Receptacles in Living Room & Bedrooms
- LED Can Light in Dining Room
- Exterior Light at each Door
- Wire & Vent for Electric Dryer
- Combo Smoke/CO Detectors Per Code

Kitchen

- 6" Stainless Steel Kitchen Sink
- Dual-Knob Faucet
- 18 Cu. Ft. Refrigerator
- 30" Deluxe Gas Range
- Power Vent Range Hood
- GFI Receptacle
- Laminate Countertop, Edge & Backsplash
- Wood Cabinet Doors – MDF Stiles
- Bank of Drawers
- Fixed Shelf in Overhead Cabinets
- Shelf Over Refrigerator
- Cabinet Cove on Overhead Cabinets

Bathroom

- GFI Receptacle
- 1-Piece Tub/Shower
- Dual-Knob Faucets
- Towel Bar & Tissue Holders
- 36" Vanity Height – Plastic Sinks
- Mirror at Vanity(s)
- Laminate Countertop, Edge & Backsplash
- Porcelain Toilet
- Curtain Rod at Tub
- Lighted Vent Fan

Due to continuous product development and improvement, prices, specifications, and materials are subject to change without notice or obligation. Square footage and other dimensions are approximate. Exterior images may be artist renderings and are not intended to be an accurate representation of the home. Renderings, photos and floor plans may be shown with optional features or third-party additions.



101 Garden Spot Rd, Ephrata, PA 17522

www.redmanhomesofpa.com