

# Product Sheet

## Product SKUs and Visuals



## Theia Microfibre Scarf sets: Scarf, ring and clasp with header card

Complete sets containing ;

- Scarf
- Theia ring
- Keyring clasp
- Presentation card



The scarves are of a unique split design that creates an elegant drape effect when displayed on Theia rings.

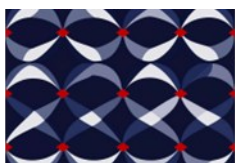
Each set provides customers with hardware that allows the Theia scarf to be presented in one of two ways;-

**Left of photo:** The full set can be simply clipped onto handbag hardware using the keyring clasp provided.

**Right of photo:** Alternatively, the keyring clasp can be removed and the scarf can be draped directly around the handbag handle, and secured with the Theia ring.

- Sets are presented on a mixture of white and slate grey header boards made from FSC approved card.
- Can be supplied with Euro slot tabs (non plastic, eco friendly) on request.
- Ring and clasp colours are pre-selected, to compliment individual scarf colours.

**RRP: £15 per set**



TS01 Navy Geo Set



TS02 Tiger Stripe Set



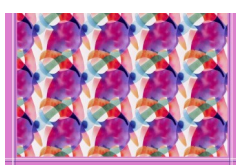
TS03 Mono Floral Set



TS04 Sage Koi Set



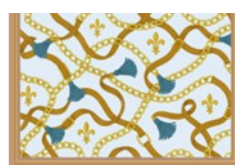
TS05 Rock Edit Set



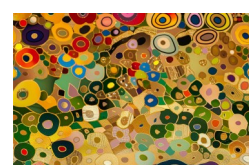
TS06 Magenta Set



TS08 Leopard Set



TS09 Eggshell Set



TS10 Nouveau Set



## Theia Refill Products

The Theia system has been designed with interchangeable components to allow users to mix and match the scarves and hardware to compliment various handbags and outfit styles and colours.

### Theia Refill Scarves: Interchangeable replacement scarves

**Important:** Theia refill scarves are designed specifically for use with Theia rings. The scarves feature a split design and are not intended to be sold as standalone cleaning cloths. Refill scarf packs do not include a ring or clasp.

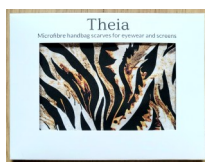
- Enveloped sets of single/double 20cm x 30cm split scarves
- Presented in a mixture of white and grey envelopes made from FSC approved card.
- Packaging includes a bio-degradable sticker on the front of each pack denoting whether the pack contains a single/double scarf.

### Single Scarf Envelopes:

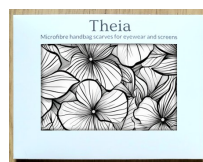
RRP: £8 per unit



SE01 Single Navy Geo



SE02 Single Tiger



SE03 Single Mono Floral



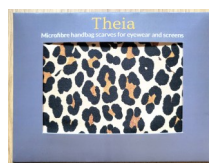
SE04 Single Sage Koi



SE05 Single Rock Edit



SE06 Single Magenta



SE08 Single Leopard



SE09 Single Eggshell



SE10 Single Nouveau

### Duo Scarf Envelopes:

RRP: £12 per unit

Duo envelopes contain x2 scarf designs, as shown. Ideal as gift packs.



DE01 Geometric Duo  
(Navy + Magenta)



DE02 Safari Duo  
(Tiger + Leopard)



DE03 Monochrome Duo  
(Rock + Mono Floral)

**Theia Clasps and Rings:** Interchangeable rings and clasps to allow customers to match sets to their handbag hardware or other accessories.



**RRP: £5 per Theia ring**

Pack size: 8 comprising x3 shiny gold, x2 shiny silver, x1 shiny rose, x1 matt gold, x1 matt silver. £16 pack.

**SKU: RS01**



Keyring clasps - Set of x3: shiny silver, gold and rose presented on a single card.

**RRP: £8    Pack size: 1 set**

**SKU: CS01**