



2025 Annual Report

ONE COMMUNITY. MANY HEARTS.

*Unlimited Impact.*



## A Note from the Executive Committee

Dear Community Members,

The generosity of our Broomfield community continues to inspire meaningful change. Because of donors, volunteers, and community partners like you, the Broomfield Community Foundation (BCF) reached an important milestone in 2025—awarding \$1,378,311 in scholarships and grants to support neighbors across our community.

This year's investment brings the Foundation's total impact to more than \$7.8 million, with over \$4.4 million distributed in just the past six years. These funds support programs that strengthen Broomfield through our five core pillars: human services, education, seniors, arts, and civic support. In addition, the Foundation also supports housing stability, urgent needs, scholarships, youth-led grantmaking through our Youth Advisory Council, and other emerging community initiatives.

Our work is made possible through collaboration. We are grateful for the partnership of the City and County of Broomfield, local nonprofits, businesses, community volunteers, and generous donors who share our commitment to building a vibrant and caring community for all.

Beyond grantmaking, the Foundation brings organizations together through the Broomfield Community Service Network and other collaborations addressing key community needs.

Thank you for being part of this work. Together, we are strengthening Broomfield today while building a lasting legacy for future generations.

With Gratitude,

**The Broomfield Community Foundation**  
Executive Board of Directors & Staff

At Donor Appreciation Night, a group of board members is pictured alongside volunteer leaders, contracted professionals, and BCF staff. Back row left to right: Tiffany Stockard, Kathy Warling, Dion West, Tanner Tweten, Lisa Herman, Jessica Wurtsbaugh, and Christy Campbell. Seated left to right: Debbie Yetterberg, Kelly Mundt, Lisa D. Gouran, and Linda Fahrenbruch. Not pictured here are Claire Hofferber, Josh Levell, and Maureen Westerland.

View our Board of Directors and staff  
by scanning this QRC.



Cover Photos: (Top row, left and right) School of Rock students performing at the 2025 Heart of Broomfield entry. Senior Services Grant Review Committee members are Chris Roarty, Mya Sapiens, Christy Campbell, Julie Twiss, Lindsey White, and Bill Muirheid. (Middle) Representatives from the Intellectual and Developmental Disabilities (IDD) Forum are attending a FRIENDS Broomfield grant check presentation with FRIENDS Broomfield, City and County of Broomfield, and BCF staff. (Bottom row, left and right) Chris Dewhurst Deputy Director of Human Services, Nanette Bezjak Steve Palmer, and Terry Essig. Josh Levell, a BCF Board of Directors member and a Veteran, recognizes the Broomfield Veterans Museum leadership and members at the 2025 Heart of Broomfield awards banquet.

### 2025 Executive Board of Directors

**Elaine Shannon**, President  
**Lisa Herman**, Past President  
**Kelly Mundt**, Vice President  
**Tanner Tweten**, Treasurer  
**Claire Hofferber**, Secretary

### 2025 Staff

**Dion West**, Executive Director  
**Tiffany Stockard**, Office Manager  
**Luciana Chama**, Community  
Engagement Coordinator  
**Avery Becklenberg**, YAC Director

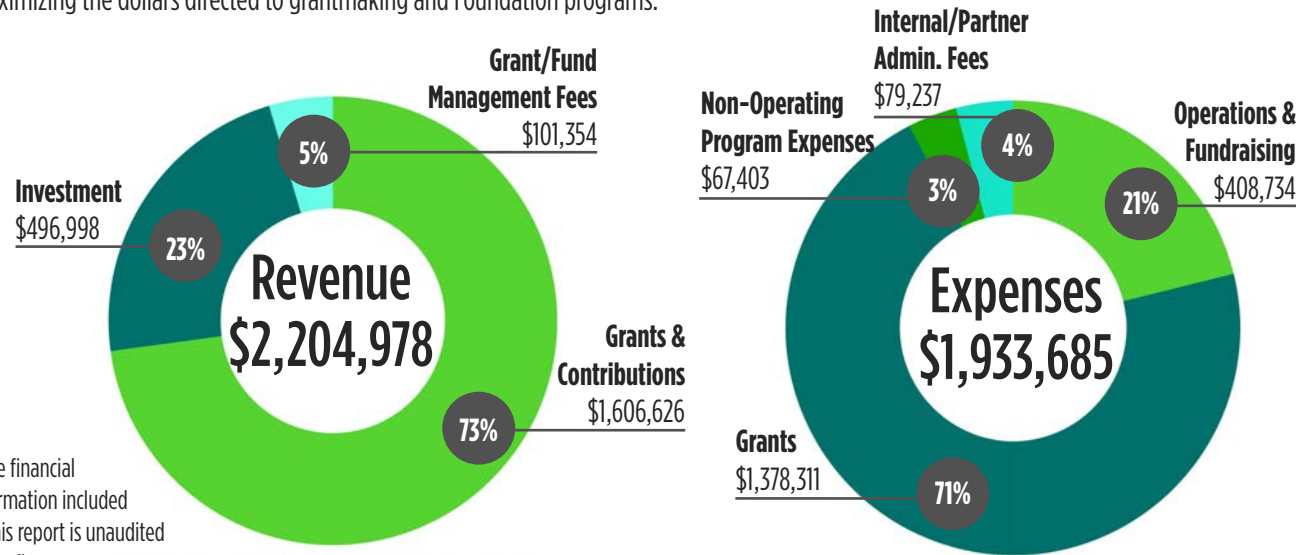
### 2026 Staff

**Dion West**, Executive Director  
**Tiffany Stockard**, Office Manager  
**Kathy Warling**, Donor Relations &  
Communications Officer  
**Kara Green**, Program Assistant  
**Connor West**, YAC Director

# FINANCIALS

The Broomfield Community Foundation remains steadfast in its mission to strengthen our community through strategic, community-informed grantmaking. As reflected in the bar graph below, in 2025, grant funding increased due to an expanded partnership with the City and County of Broomfield, with BCF now administering additional funding for human services grants.

Equally important is our commitment to responsible fiscal stewardship. We thoughtfully manage resources to ensure operational efficiency while maximizing the dollars directed to grantmaking and Foundation programs.

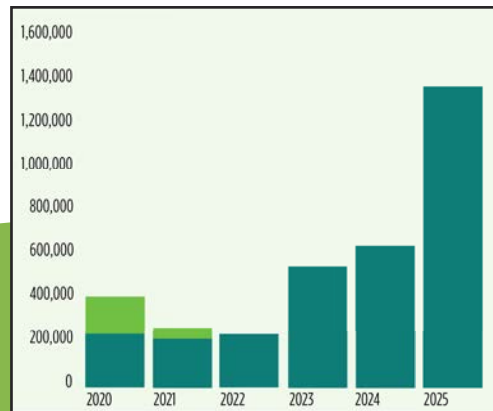


\* The financial information included in this report is unaudited and reflects current internal reporting.

## Accelerating Community Impact: 5-Year Grantmaking Growth

This year's investment brings the Foundation's total impact to more than \$7.8 million.

2020 and 2021 : ● Disaster Relief (COVID-19)  
● Community Grants

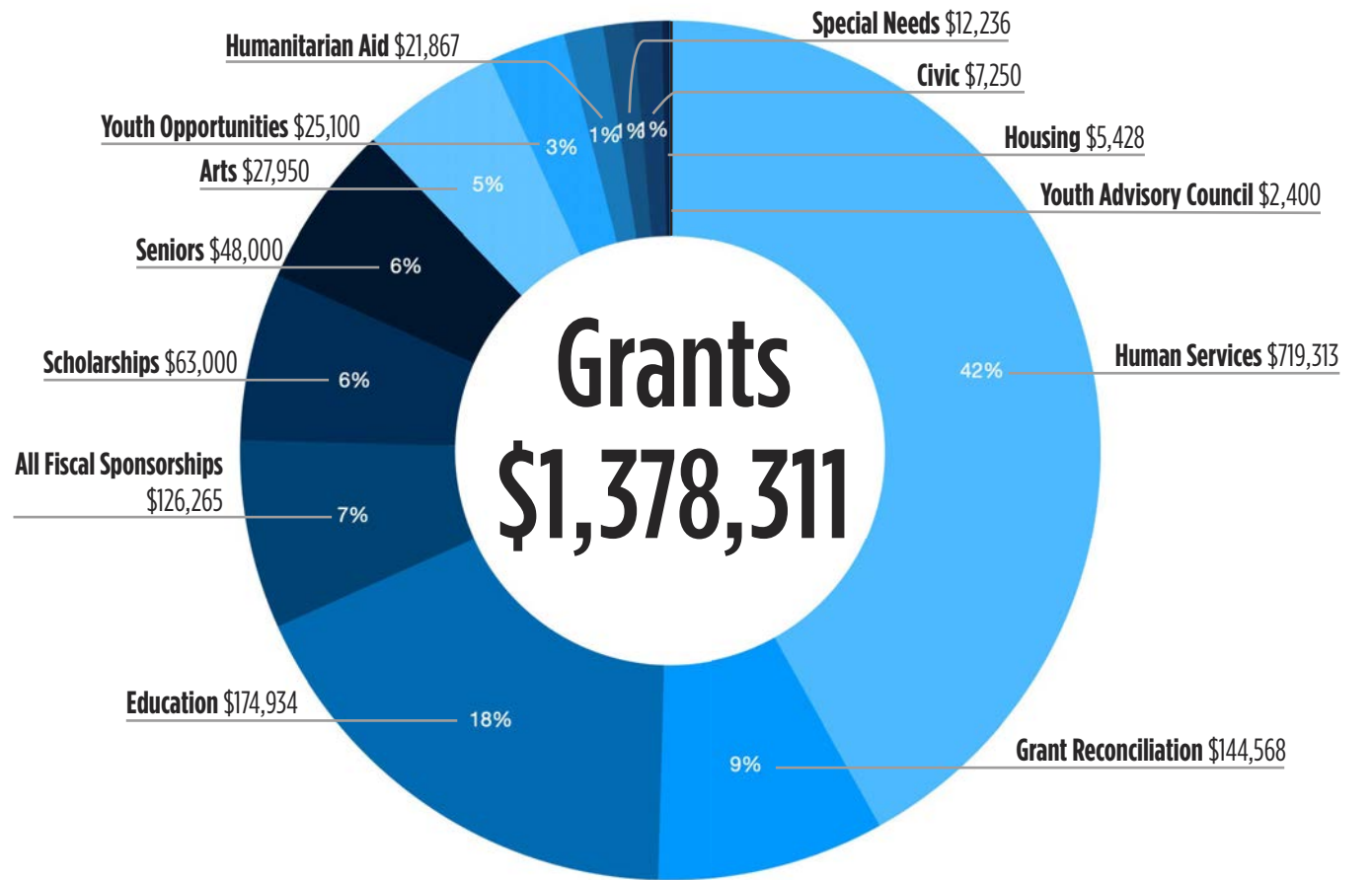


Year	Grants Distributed
2020	\$ 418,406
2021	\$ 271,401
2022	\$ 268,417
2023	\$ 530,804
2024	\$ 668,017
2025	\$1,378,311

# GRANTMAKING FOR NONPROFITS

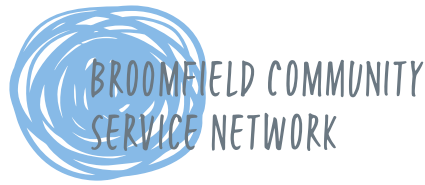
# 2025 GRANTS

In 2025, we awarded **\$1,378,311** in scholarships and grants, bringing our total community impact to **more than \$7.8 million**—including **over \$4.4 million awarded in the last six years alone**. In total, **98 grants and scholarships** were distributed in 2025, including nonprofit awards and individual assistance in 2025, including nonprofit awards and individual assistance grants.



Visit our website for a full list of 2024-2025 grant recipients by scanning the QRC or use this URL: <https://www.broomfieldfoundation.org/how-we-support-nonprofits>

# Building Nonprofit Collaboration, Connecting Community



**Broomfield Community Service Network (BCSN)** unites nonprofits, businesses, and government agencies to enhance collaboration and maximize impact.



*“The Broomfield Community Service Network shows what’s possible when organizations gather with open minds and shared purpose. By collaborating, listening, and learning from one another, we strengthen the support systems that help Broomfield residents succeed and thrive.”*

— **Kathy Escobar**  
The Refuge



(Above) Community Service Network participants gather monthly and join in interactive exercises designed to foster collaboration and information sharing. (Left) Tri Ma, a member of the BCSN Leadership team, works with Clinica Family Health and Wellness staff members Monica Camargo and Sarah Onstott.



**Volunteer Match**  
**Volunteer Teen Match**



(Left and center) BCF hosted the 6th annual Adult Volunteer Match Open House, where more than 100 residents connected with 20 Broomfield nonprofits to explore volunteer opportunities. (Right) The first annual Teen Volunteer Match took place in the spring, connecting students with meaningful volunteer opportunities. The event was a collaboration between Broomfield Communities That Care, Broomfield Volunteer Services, and BCF.

# Members, and Growing Youth Leadership

**Youth Advisory Council (YAC)** empowers young leaders through hands-on philanthropy.

**2025-2026 PARTICIPANTS REPRESENTING FIVE LOCAL HIGH SCHOOLS:**

- Allister Hofferber • Ana Van Rooy • Fareeha Shaik • Hailey Hunter
- Lucy Kreitzberg • Nick Jezierski • Nora Wu • Prisha Jain • Reyna Jezierski
- Vyom Jain

**VOLUNTEER LEADERSHIP:** Avery Becklenberg and Marianna Williamson

**INTERN:** Ashley Rodriguez Castillo



(Top) Siblings Prisha and Vyom Jain attended Donor Appreciation Night and, when it was their turn to take the stage, shared the YAC’s fundraising cause. (Bottom) The YAC attended the Heart of Broomfield banquet, where they presented their grants to the nonprofit recipients.

## BASELINE™

The Youth Advisory Council empowers young leaders through hands-on philanthropy. Joining up with McWhinney Baseline as YAC sponsor, members led kickball at the Bees + Blossoms Festival and sold handcrafted luminaires as a fundraiser at the Bee Merry Festival.



In 2024-2025, the program raised and distributed \$2,000 in grants to four nonprofits supporting Mental Health programming for Broomfield youth.



# Celebrating Passion, Purpose, and Possibility

## Heart of Broomfield Awards

The 2025 Heart of Broomfield honored three outstanding community exemplars for their service and community spirit.

- Enduring Heart Lifetime Achievement: **Kathy Escobar** co-founded The Refuge in 2006 launching mobile outreach, health clinics, recovery groups, and literacy programs. Kathy's legacy is rooted in action.
- Heart and Soul: **Dawn Rachjaibun** a steadfast force of good leading the City and County of Broomfield Aquatics Program.
- Hearts of Gold: **Broomfield Veterans Museum** – a special group where service never ends, rather it evolves.



(Top left) Kathy Escobar and Dion West. (Bottom left) Lisa Herman and Dawn Rachjaibun. (Above) Broomfield Veterans Museum leaders and volunteers received the Heart of Gold award.

## SCHOLARSHIP

**Scholarship** The Broomfield Community Foundation is supported by individuals, families, corporations, and organizations dedicated to advancing education in our community. These scholarships are tailored to help students achieve their academic goals beyond high school, offering crucial financial assistance that makes higher education more accessible.

### 2025 RECIPIENTS:

#### Audrey Thompson | Dr. Bill & Jean Markel Medical Scholarship

Retired family practice physician Dr. Bill Markel and his wife, Mrs. Jean Markel, established this postgraduate medical scholarship.

#### Ari Harping | Mathew R. Craddock Memorial Scholarship

This scholarship honors Matthew R. Craddock, a dedicated long-time coach and educator in the Adams 12 Five Star School District.

#### Isaac Lindeman | Jimmy Griffin Memorial Scholarship Fund

In memory of Jimmy Griffin, who was a Legacy High School junior and football team member who passed away in a car accident in the fall of 2003.

#### Qynton Salyer | George DiCiero Scholarship Fund

A four-year scholarship for a student who wishes to pursue a course of study that will prepare him or her for a life in public service.



#### Tori Entwistle | Cody Steven Oser Legacy Scholarship Fund

In memory of Cody Steven Oser, a Civil Engineering graduate from Colorado State University who passed away in Panama on April 8, 2017 while serving in the Peace Corps.

#### Amy Lin, Ava Sondrup, and Rebecca Rice | Kim Wilkerson Memorial Scholarship Fund

In memory of Kim Wilkerson, a former Broomfield High School math teacher, awarded to a student who excels in math.



(Left) Ari Harping, Troy Craddock, Elaine Shannon, and Isaac Lindeman. (Center) Qynton Salyer, Rebecca Rice, Ava Sondrup, Amy Lin and Debbie Yetterberg. (Above) Parents of Audrey Thompson who earned the Dr. Bill & Jean Markel Medical Scholarship but could not be in attendance, Lisa Gouran and Tori Entwistle.

# Guided by Generosity, Grounded in Community



The Spartan Aviation Scholarship awarded 24 students up to \$1,500 each to support careers in aviation—from pilots to aircraft maintenance technicians. With a growing shortage of skilled professionals, these scholarships are helping ensure safe, reliable air travel for us all.

Open to students of all ages, the scholarship drew strong interest from Metropolitan State University of Denver, MacAir Aviation, and Spartan College of Aeronautics and Technology.

If interested in creating a personal or memorial scholarship or a business scholarship, we'd be happy to partner with you. Email us at [info@broomfieldfoundation.org](mailto:info@broomfieldfoundation.org).



Nick Brown, Campus President and CAOO-Tech at Spartan College of Aeronautics and Technology, awards a student with a financial scholarship.

## 2025 GRANTMAKING FOR NONPROFITS



### HUMAN SERVICES, FOOD, HOUSING & TRANSPORTATION

- A Precious Child
- Almost Home, Inc.
- Community Food Share
- Denver Regional Mobility
- Hands of the Carpenter
- Kiwanis Club of Broomfield
- Project Angel Heart
- Ralston House
- The Refuge
- Safehouse Progressive Alliance



### SENIORS & ADVOCACY

- Audio Information Network
- Broomfield Meals on Wheels
- Brothers Redevelopment, Inc.
- CASA of Adams & Broomfield Counties
- Cultural Brokers Advocacy
- Rocky Mountain Legal Center



### INCLUSIVE COMMUNITY SUPPORT

- Association for Community Living
- Bals Swan Children's Center
- Best Buddies International, Inc.
- Center of People with Disabilities
- Five Star Education Foundation
- FRIENDS of Broomfield
- Imagine!
- Special Olympics Colorado

At the Foundation, we believe in the power of collective generosity. **Community-driven philanthropy thrives through partnerships with individuals, families, and businesses.** When we come together—each contributing in our own way—we create a stronger, more connected Broomfield. *Because when we all give, we all rise.*



### EDUCATION

- Broomfield Early Childhood Council
- Broomfield Rotary (Dolly Parton Imagination Library)
- Coal Creek Adult Education Center
- Garden to Table
- Impact on Education
- Intercambio Uniting Communities
- Junior Achievement Rocky Mountain, Inc.
- Parent Engagement Network
- Reach Out & Read Colorado
- Thrive Transformation at Work
- Thorne Nature Experience
- Whiz Kids Tutoring, Inc.



### ARTS & CIVICS

- Art as Action
- Broomfield Civic Orchestra
- Broomfield Council on the Arts & Humanities
- Broomfield Veterans Museum
- Chabad of Broomfield
- Children's Hospital Foundation (arts-in-healing initiative)
- Colorado Conservatory of Dance
- Colorado Symphony Association
- Parlando School of Musical Arts
- Sister Cities – Cheyenne & Arapaho Tribes
- The Day of Empowerment (youth mental health initiative)



### YOUTH OPPORTUNITIES

- Aspen Creek Pre-K through 8th: Gay-Straight Alliance Club
- Broomfield Heights Middle School: Crafts and Garden Club
- Broomfield High School: Eagle Way Theatre Company, Interact Club, and Marching Band
- Legacy High School: Five Star Education Foundation support for extra curricular club fees
- Parlando School of Music: M.O.R.E. for Colorado distributed to Aspen Creek Pre-K through 8th, Jefferson Academy Charter School, and Prospect Ridge Academy
- Summer Camp Programming at Broomfield Early Childhood Council, Broomfield STEM, Rocky Mountain Martial Arts, and Thorne Nature Experience
- Westlake Middle School: Color Guard Club

### Distinction for Meeting High Standards

Grant recipients receive a BCF Seal of Excellence—a mark of achievement for outstanding nonprofits. Our rigorous grantmaking evaluation process ensures that recipients are recognized for their dedication to impactful community work. Nonprofits can display the badge on marketing materials showcasing their strong operations and commitment to positive impact.



# With Gratitude to Those Who Give - Donors and Businesses Alike

## 2024-2025 Supporters

### Contributor Legend:

- ♥ iGIVE365\*
- ♥ Match Partner\*
- ♥ Donor\*
- ♥ Board of Director Member/Founder
- ♥ Heart of Broomfield Awardee
- ♥ Fund Holder
- ♥ Legacy Fund Gift
- ♥ Generations Fund Holder



- Ronda and Thomas Alford ♥
- Curt Anderson ♥♥
- Anonymous supporters ♥♥♥
- Jade and Jorin Bale ♥♥♥♥
- Wendy Bangs ♥
- Baseline, a McWhinney Community ♥
- Larry Beck ♥♥♥♥
- Jennie and Tom Belval ♥♥♥♥♥
- Diane and Greg Blanchard ♥♥♥♥♥
- Sallie and Don Bolich ♥♥♥♥
- Beth and John Bosio ♥♥♥♥♥
- Andrew Bosio ♥♥
- BOSS Printing ♥
- Patrick Boyle ♥♥♥
- Gloria Brandt ♥
- Christy Campbell ♥♥
- Mary Kay and George Cavanaugh ♥
- Jeanie and Tim Clifford ♥♥♥♥
- Beth and Bruce Clow ♥
- CM Home - Christina Surprenant ♥
- Cindy and Tim Combs ♥♥♥♥
- Stacie Craddock ♥♥♥
- Carolyn and Peter Crouse ♥♥♥♥
- Karen and Bob Davis ♥♥♥♥
- Martha and Paul Derda ♥♥♥
- Barbara and Jerry Donahue ♥♥♥
- Barb and Mark Eggleston ♥♥
- Tina Eichner ♥♥
- Kimberly and Isaac Elliott ♥♥
- Linda and Bruce Erley ♥♥♥♥

- Kathy Escobar ♥♥♥
- Linda and Tom Fahrenbruch ♥♥♥♥♥
- Joan and Dr. Ron Faulkner ♥♥
- First Bank ♥
- First Interstate Bank ♥
- First Western Trust ♥
- Lyn and Gary Francis ♥♥
- Meghan and Tom Frenzel ♥♥
- Karen and Dr. Michael Fried ♥♥♥
- Genia and Gary Gallagher ♥♥♥
- Lisa and Kevin Gouran ♥♥♥
- Joan and Clark Griep ♥♥♥
- Jean and Robert Gryzmala ♥♥♥
- Leslie Hatridge ♥
- Dianne and Gary Henry ♥♥
- Lisa and Lowell Herman ♥♥♥
- Higher Ground Law - Emily Coleman ♥
- Claire and Grayson Hofferber ♥♥♥
- Jennifer and Jerry Hoffman ♥
- Bob Hoyle ♥♥♥
- Jax and Daniel Jaramillo ♥
- Maura and Bruce Johnson ♥♥
- Susan and Steven Johnson ♥♥♥
- Alice Kidney ♥♥
- Debbie Kunz ♥
- Christine and Travis LaBerge ♥♥♥
- Vicki and Steve Larson ♥
- Mary and Richard Lane ♥
- Jennifer and Keppen Laszlo ♥♥♥
- Safyra and Joshua Levell ♥♥

- Lido Advisors ♥
- Kathryn Lynip ♥
- Cynthia and Dave Manley ♥♥♥♥
- Dr. Bill and Jean Markel ♥♥♥♥♥
- David Masy ♥
- Kerry McGlynn ♥
- Sean McKenzie ♥
- Ellie McKinley ♥♥♥
- Connie Miller ♥
- Janice Miller ♥♥♥
- Lew Moir ♥♥♥♥♥
- Dotti Moyer ♥♥
- Marsha and Bill Muirheid ♥♥♥
- Kelly and Brad Mundt ♥♥♥
- Robert Munroe ♥
- Mary Anne Murphy ♥
- Donna Neddeau ♥♥♥
- Lyn Oser ♥♥
- Our Broomfield ♥

- Hilegard Owens ♥
- Joan Pallone and Associates, Inc. ♥♥
- PB & T Bank ♥♥
- Geraldine Pearson ♥
- Sheila Preston ♥♥
- Connie and Vance Rasmussen ♥♥♥♥
- Paula and Stephen Reynolds ♥♥♥♥
- Christine and Sarah Ridgeway ♥
- Amy and Fred Romyer ♥
- Leah Sarno ♥
- Kurt Sava ♥♥
- Shelley and Tim Schafer ♥♥♥
- Elaine Shannon ♥♥♥
- William Sheridan ♥
- Sill TerHar Motors ♥
- Karen and Joe Smith ♥♥♥♥
- Kayleen and Bal Spallone ♥
- Kathryn and Greg Strong ♥♥
- Christina Surprenant ♥

- Kathy and Jeff Taylor ♥♥♥
- Sara and Sam Taylor ♥♥
- Penny and Jack Jr. TerHar ♥♥♥♥
- Patsy and John Thompson ♥♥
- Rebekha Tilbury ♥♥
- Emily and Tanner Tweten ♥♥♥
- Karen Usrey ♥
- Dr. Michael Usrey ♥
- Katherine and Ben Vagher ♥♥♥♥
- Laura and Tim Vincent ♥
- Heidi Wallace ♥♥
- Evelyn and Christian Walter ♥♥
- Dion and Jon West ♥♥♥
- Maureen and Barry Westerland ♥♥♥
- Marianna and Wade Williamson ♥
- Debbie Ytterberg ♥♥
- Pamela and Martin Zadigian ♥

\*2024-2025 Recognized Donors

We're grateful for your generous support. If we've unintentionally overlooked your name or heart designation, we sincerely apologize —please reach out so we can address it and recognize you properly. **Contact us for more information if you'd like to add a new heart to your name.**

**Support the Foundation today with a tax-deductible donation.**



Cindy and Dave Manely have supported BCF for over 30 years, demonstrating their trust in BCF's mission-centered organization.



Donor Appreciation Night 2025. (Top) Board member Josh Levell and his partner Safyra converse with Bal Swan Children's Center Executive Director, Debbie Kunz, and donor Wendy Gross. (Bottom) Greg Stokes, 2025 Volunteer of the Year Awardee, connects with longtime supporters Vance and Connie Rasmussen.

# Business Impact Partner Benefits and Employee Engagement

Businesses of all sizes — from growing start-ups to established enterprises are discovering that strategic philanthropy strengthens both their company and their community. BCF works with companies to create a customized giving program aligned with their values, business goals, and philanthropic interests. Personalized approaches to giving can amplify impact in Broomfield.

## PLATINUM PARTNER BROOMFIELD Enterprise



## Business Impact Partner Highlight First Interstate Bank Demonstrates the Power of Giving and Employee Engagement

First Interstate Bank exemplifies what it means to be a true community partner—combining generous financial support with a strong culture of employee engagement.

Under the leadership of Lisa Gouran, Vice President & Retail Hub Manager, the bank presented a \$5,000 grant to the Broomfield Community Foundation to support local programming.

Beyond corporate giving, First Interstate encourages employees to deepen their impact through volunteerism and matched charitable contributions—ensuring every dollar and every hour goes further. Lisa regularly reminds her team that **meaningful impact doesn't require large donations—when gifts are matched and combined, even small contributions create powerful outcomes.**

Her team brings this commitment to life through hands-on service, including volunteering at Broomfield FISH.

Through both financial support and active engagement, First Interstate Bank—and Lisa's leadership—demonstrate how businesses can strengthen the communities they serve.

We are grateful for First Interstate's partnership and for Lisa's service on the BCF Board of Directors.

## Turnkey Programs That Make Community Impact Easy

The Broomfield Community Foundation helps businesses turn their values into action—without adding extra lift to internal teams. Our turnkey programs are designed to streamline employee engagement, simplify giving, and maximize community impact.

## Here's how BCF supports businesses:

- Volunteer coordination made simple
- Ready-to-launch matching gift campaigns
- Holiday giving drives with heart
- Purpose-driven employee recognition
- Connection to a community of change-makers

The result: stronger employee engagement, simplified program management, and measurable impact right here in our community.

## Let's connect.

Interested in bringing this approach to your organization? Email [info@broomfieldfoundation.org](mailto:info@broomfieldfoundation.org) to schedule a conversation.



## Small Contributions, Big Impact

Thank you iGIVE365 members—you're making a meaningful difference for thousands of neighbors across Broomfield!

### \$1 a Day. 365 Days of Impact.

- \$59,555 raised by iGIVE365 members in 2025
- 100% of donations go directly to local grantmaking
- Supports nonprofits addressing food, housing, health, education, and more

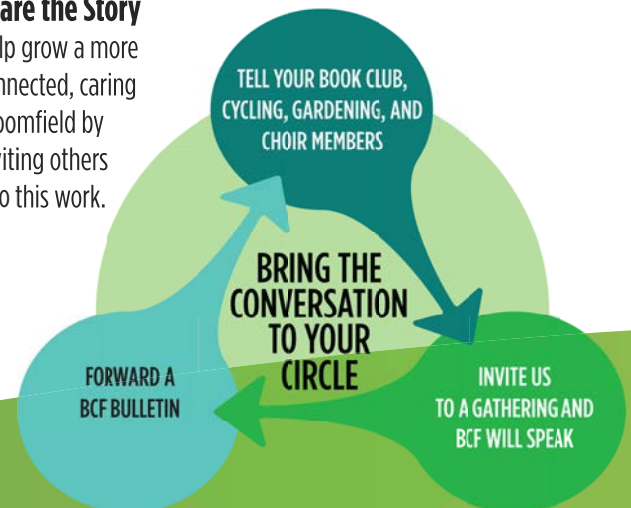
♥ Indicates iGIVE365 members in the donor summary segment.

## Help with the Multiplier Effect

- What: An initiative to increase iGIVE365 membership
- Why: Help fill the budget gap for the nonprofit programs
- How: Grow membership by 100 members yearly
- Impact: Increase annual grantmaking by \$36,500

### Ways You Can Amplify BCF's Impact – Share the Story

Help grow a more connected, caring Broomfield by inviting others into this work.



*"We love giving to the Broomfield Community Foundation. We can trust the Foundation to allocate our gift to the many wonderful organizations that help Broomfield thrive. We know that when we combine our dollars with donations by our fellow community members, those dollars go further. And the Foundation does the work of vetting the organizations, so that we know our donations go to worthwhile causes!"*  
**— Tom and Jennie Belval**



## Donor Advised Funds

Opening a Donor Advised Fund allows you to be ACTIVELY involved in your charitable giving. As a donor, you receive a tax deduction when you set it up and each time you contribute to it thereafter. **YOU are the one that gets to decide which charitable organizations to support, how much to give, and when.** Leave it to our team to facilitate your donations and support you in growing the fund balance to create additional and meaningful impact.

- Ann Montague Memorial Fund
- Bale Family Fund
- Blanchard Family Fund
- Bosio Family Fund
- Claire Hofferber Fund (aka Sidney High School Fund)
- Dustin Peterson Memorial Fund
- Frenzel Family Fund
- gg Gallagher Family Fund
- Hoyle/Fisher Family Charitable Fund
- Jessica Ridgeway Legacy Fund
- Miller Family Fund
- NW Parkway Corporate Advised Fund
- S & S Johnson Family Fund
- Walzak Combs Family Fund

Not yet an iGIVE365 member? Scan this QR code today!



Greg Blanchard, a BCF Donor Advised Fund holder, second from the right, volunteers alongside Senior Resources of Broomfield—assembling holiday gift bags.

# Field of Interest & Designated Purpose Funds & Fiscal Sponsorships



We host a variety of funds to provide donors with a wide range of philanthropic tools, resources, and pathways to fulfill their goals. Our Field of Interest and Designated Purpose Funds allow YOU to direct your support to either a specific area of interest or a specific cause. We also offer fiscal sponsorship to support new and emerging charitable projects. **From housing to humanitarian aid, health & wellness to youth opportunity scholarships, we host a wide range of funds to help you direct your dollars to causes near and dear to your heart.**

For more information about contributing or to start a fund yourself, please contact us directly at [info@broomfieldfoundation.org](mailto:info@broomfieldfoundation.org) or 303.469.7208.



(Above) Rabin Walters, FRIENDS of Broomfield Director of Philanthropy, gathers with participants in the intellectual and developmental disabilities program. (Below) A tenured preschool teacher in the Boulder Valley School District provides school-readiness education for rising kindergartners. Impact on Education helped fund this four-week, full-day academic program.

- Broomfield Buddies
- Broomfield Community Services Network Fund
- Broomfield Housing Fund
- Broomfield Humanitarian Fund
- Daniel the Lion Fund
- Disaster Relief Fund
- FRIENDS of Broomfield Fund
- Housing Stability Task Force Fund
- iGIVE365 Community Impact Fund
- Legacy Endowment Fund
- Neurodiversity Community Center Fund
- Partners in Philanthropy Fund
- Special Needs Fund
- Workforce Champion Fund
- Youth Advisory Fund
- Youth Opportunities Fund

Donate to a special interest fund of your choice by scanning this QR code.



## Purpose Funds & Fiscal Sponsorships

**In 2025, \$12,236 from the Special Needs Fund provided rapid support to restore dignity and stability—often within 48 hours—when neighbors faced unexpected hardship.** Rather than issuing funds directly, payments are made to trusted local businesses to ensure immediate, practical solutions.

Support included:

- New tires so a single parent could get to work and school safely
- Partial rent payments to prevent eviction
- Emergency hotel stays during winter
- Mattresses for a family moving into stable housing
- Unanticipated medical expenses

Requests are submitted by nonprofit care managers who work closely with individuals in need. Each is reviewed quickly, and when approved, funds are deployed right away—delivering timely, dignified support when it matters most.

*“Support from the Broomfield Community Foundation’s Special Needs Fund allows partners like Broomfield FISH to respond quickly when neighbors face unexpected hardship—often in moments when timing makes all the difference.*

*While these needs may seem simple, they are deeply impactful—restoring dignity, stability, and the ability to move forward during incredibly difficult moments. Each grant is a reminder that our community shows up for one another in meaningful, life-changing ways.”*

— Tangi Lancaster, Bilingual Participant Advocate, Broomfield FISH

Read the full testimonial at: <https://www.broomfield-foundation.org/impact-stories>





**GENEROUS DONORS**



**BROOMFIELD COMMUNITY SERVICE NETWORK**



**GRANT MAKING**

COMMUNITY  
Date Feb. 3, 2025  
Pay to the order of Bal Swan Children's Ctr. \$145,000.00  
Forty-Five thousand + 00/100 Dollars  
Human Service Grant



**HEART OF BROOMFIELD**



**VOLUNTEER MATCH**



**SCHOLARSHIP**



**YOUTH ADVISORY COUNCIL**

*CREATING A STRONGER BROOMFIELD Together*



42 Garden Center, Broomfield, CO 80020  
303-469-7208 | info@broomfieldfoundation.org



One Community. Many Hearts. Unlimited Impact.™