



Underwritten by: **American Heritage
Life Insurance Company¹**

Universal Life Insurance

A death not only leaves behind loved ones, but also financial obligations. And, like many people, you may not have enough life insurance to keep your family afloat if an unexpected death occurs. Give yourself and your loved ones a gift of love with Good Hands[®] protection from Allstate Benefits.

Without a Life Insurance policy, your family may have to tap into their savings, retirement, or 401k to help cover final expenses and everyday living expenses should a loved one die unexpectedly.

Here's How It Works

You choose the coverage that's right for you and your family. With planning, the death benefit can pass to your beneficiaries free from state or federal estate taxes. Consult with your tax advisor for specific information. Then, if life comes to an end while coverage is in force, your beneficiaries can receive a tax-free death benefit that can be used to help pay for funeral expenses, mortgage payments and more.

Meeting Your Needs

- You choose the death benefit amount to leave behind
- Coverage for spouse and children through a separate certificate or rider²
- Premiums are affordable and conveniently payroll deducted³
- Tax benefits, withdrawals and loans are available. However, penalties and taxes may affect your decision⁴

With Allstate Benefits, you gain peace of mind knowing your loved ones will receive a financial safety net when you die – think of it as your final gift of love.

Practical benefits for everyday living.[®]

¹Allstate Benefits is the marketing name used by American Heritage Life Insurance Company, a subsidiary of The Allstate Corporation.

²Coverage for spouse and child(ren) may be limited to a percentage of the employee's face amount in some states. ³This is a flexible premium adjustable life insurance product with non-guaranteed elements. Premiums may need to be increased to maintain coverage to maturity (age 95). ⁴Partial withdrawals, surrenders, non-qualified additional benefit rider charges and loans from life insurance policies may be subject to ordinary income taxes and possibly an additional 10% federal tax penalty. Outstanding loan balances and withdrawals generally reduce the death benefit and cash value. With proper planning, the death benefit can pass to your beneficiaries free from state or federal estate taxes. Please consult with your tax advisor for specific information. ⁵2019 Insurance Barometer Report, LIMRA



Allstate[®]
BENEFITS

**Provides a cash benefit
directly to your beneficiary**

DID YOU KNOW ?



Reasons for purchasing life coverage include: replace income, final expenses, wealth transfer and mortgage payoff.⁵



Common financial concerns among Americans include: the ability to afford long-term care, medical and disability expenses, retirement, investments, living debt/expenses and final expenses.⁵



**Benefit coverage for:
State of Missouri Employees,
Public Entity Employees, and
their Families**

**Offered by:
State of Missouri Voluntary Life
Insurance Contractor MoVLIC**

**Administered by:
McDaniel Hazley Group, Inc.**
PO Box 481757
Kansas City, MO 64148
Toll Free: (866) 891-4149

**To Enroll:
State of Missouri Employees:
www.mhgmovlic.org
Or call: (866) 891-4149**

**Public Entity Employees:
www.mhgpublicentities.org**

Meet Jordan

Jordan is like any parent who has emotional and financial responsibilities. He's worried about how his family will make ends meet if he dies unexpectedly. Most importantly, he worries about leaving them with a large debt.

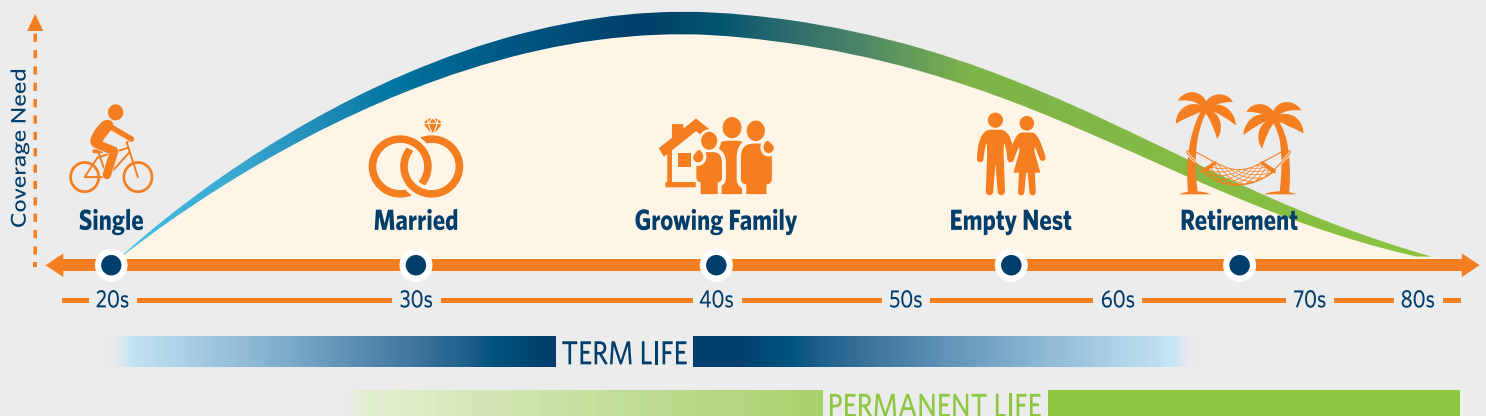
Here is what weighs heavily on his mind:

- The cost of funerals often leaves a financial commitment behind for surviving loved ones
- Money may be needed for his family's day-to-day living expenses, such as food, gas and electricity
- He still owes a substantial amount on his mortgage before it is paid off
- His children will need income for child care and educational expenses as they get older



Coverage for all stages of life

As people move through the stages of life, certain factors dictate the type of life insurance they need. During working years, an employer may provide term life insurance, but the wraparound coverage of our Group Universal Life product can help give peace of mind because the money you spent builds cash value that you can use later in life or add to the term benefit payout. The graph below illustrates the need for term and permanent life insurance throughout the various stages of life.



The examples above detail fictional thought processes and needs; your individual needs and reasons for coverage may vary.

Using your cash benefits

Cash benefits provide you with options, because you or your beneficiary get to decide how to use them.



Finances

Cash benefits can help protect your HSAs, savings, retirement plans and 401ks from being depleted



Travel

Your coverage will provide cash benefits to your beneficiary which can be used to help with travel related funeral expenses



Home

Your beneficiary can use the cash benefits to help pay the mortgage, continue rental payments, or perform needed home repairs



Expenses

The lump-sum cash benefit can be used to help pay for living expenses such as bills, electricity and gas



With proper planning, the death benefit can pass to your beneficiaries free from state or federal estate taxes. Please consult with your tax advisor for specific information.

You may be required to answer health questions at enrollment. Coverage may be available with reduced underwriting through your employer during your initial enrollment period. If you enroll after your initial enrollment period, answers to health questions are required.

Prepare for the future today

Losing a loved one can be devastating. Final expenses and daily bills only add to your worries. Our Universal Life Insurance coverage may be used to:

- Pay off a mortgage or debts
- Provide for child care or educational expenses
- Replace income to continue the same standard of living

One way you can determine if you and your family need the coverage is to review the list below and check some or all that apply to you and your family.

- ☐ You're the primary wage earner in your family
- ☐ Your family would have trouble living comfortably without your income
- ☐ You have regular debts, like mortgage, car payment or credit cards
- ☐ You have children under 18
- ☐ You want flexible coverage that can change with your needs
- ☐ You'd like to plan to supplement your retirement income in later years

Here's how Universal Life works

Premium payments are deducted from your paycheck and added to the fund value. Each month, expenses and cost of insurance charges are deducted from the fund value and any excess in the fund continues to earn interest at a rate of at least 3% per year. Interest is not taxed as income until it is withdrawn.

Fund value and premium payments

As you continue to pay your premium, your fund value may grow over time. Monthly premiums are flexible, meaning you can choose to pay as much or as little as you can afford, subject to policy minimums and maximums. Premiums may need to be increased to maintain coverage to maturity (age 95).

Benefits

Life Insurance - pays a lump-sum cash benefit when you die

OPTIONAL/ADDITIONAL RIDER BENEFITS⁶

Accidental Death Benefit - an additional death benefit is paid if death occurs from accidental bodily injury

Accelerated Death Benefit for Terminal Illness^{*} - a lump-sum advance of 75% of the death benefit (not to exceed \$100,000) when certified terminally ill by a physician. The benefit payable is discounted using the current discount rate

Accelerated Death Benefit for Long Term Care with Extension of Benefits^{}** - a monthly advance of 6% of the death benefit for up to 34 months while receiving qualified long-term care services after a 90-day elimination period when certified chronically ill by a licensed health care practitioner

Children's Term⁷ - a death benefit is paid for each covered child more than 24 hours and not yet 25 years old

Total Disability Payor Waiver of Premium - we pay your planned premiums when we receive proof that the employee/payor is totally disabled for at least 6 months

⁶The riders have exclusions and limitations, may vary in availability by issue age, and may not be available to all covered dependents or in all states. Additional premiums may be required for riders added to coverage. ⁷Subject to state limits on dependent life coverage. ^{*}Monthly Deductions are waived after payment of benefit. ^{**}Monthly Deductions are waived for the months when the benefit is payable.

Administered by:
**McDaniel Hazley
Group, Inc.**
PO Box 481757
Kansas City, MO 64148
Toll Free: (866) 891-4149

State of Missouri Employees:
www.mhgmovlic.org

Public Entity Employees:
www.mhgpublicentities.org

EXCLUSIONS AND LIMITATIONS

Pre-Existing Condition Limitation

Accelerated Death Benefit for Long Term Care Rider, Accelerated Death Benefit for Long Term Care with Extension of Benefits - Benefits are not paid for a period of chronic illness care resulting from a pre-existing condition that begins within the first 6 months after the effective date of coverage. This does not apply to a period of care beginning 6 months after the effective date. A pre-existing condition is a condition, whether diagnosed or not, for which symptoms existed within the 6-month period prior to the effective date, or medical advice or treatment was recommended or received from a medical professional within 6 months before the effective date.

Exclusions

Accelerated Death Benefit for Long Term Care Rider, Accelerated Death Benefit for Long Term Care with Extension of Benefits - Benefits are not paid for long-term care services that are: a result of mental or emotional disorder (except for Alzheimer's Disease, senility, or senile dementia that are of organic origin); a result of alcoholism or drug addiction; a result of illness, treatment, or medical conditions due to: act of war, participation in a felony, riot, or insurrection, serving in the armed forces or auxiliary units, suicide while sane or attempt at suicide for one year after the effective date, or intentionally self-inflicted injury; provided in a government facility (unless required by law); services for which benefits are available under Medicare (except for deductibles or coinsurance requirements) or other governmental program (except Medicaid), any state or federal workers' compensation, employer's liability or occupational disease law, or motor vehicle no-fault law; received outside the United States or its territories.

Accidental Death Benefit Rider - Benefits are not paid if death results from (directly or indirectly) or is contributed to by (wholly or in part) the following causes: suicide, or an attempt at suicide; accidental bodily injury due to mental or bodily illness or disease of any kind; committing or attempting an assault or felony; intentionally taking any drug (unless prescribed by a physician), alcohol, or poison, intentionally inhaling gas or fumes; operating, riding in, or descending from aircraft if: a pilot or officer or crew member, the purpose is descent from the aircraft during flight, giving or receiving training or instruction, or working aboard the aircraft; insurrection, war (conflict involving the armed forces of any country or countries) or an act of war, while serving or not serving in the military.

Total Disability Payor Waiver of Premium Rider - Benefits are not paid if disability results from intentionally self-inflicted injury or from war or an act of war while the payor is serving in the military of any country.

Suicide Exclusion for Group Universal Life and Children's Term Rider - If the insured or rider insured commits suicide within 1 year of the effective date of coverage, the death benefit will be limited to the premiums paid.

Universal Life Plan	
<input type="checkbox"/> Employee	_____ Age
	_____ Face Amount
	_____ Guaranteed Fund Value Age 65
<input type="checkbox"/> Long Term Care Rider	
	_____ Semi-Monthly Deduction
<input type="checkbox"/> Spouse	_____ Age
	_____ Face Amount
	_____ Guaranteed Fund Value Age 65
<input type="checkbox"/> Long Term Care Rider	
	_____ Semi-Monthly Deduction
Total Semi-Monthly Deduction	

This brochure is for use in enrollments situated in MO. This advertisement is a solicitation of insurance; contact may be made by an Allstate Benefits Agent, Agency, or Representative.

It is possible that coverage will expire when either no premiums are paid following the initial premium or subsequent premiums are insufficient to continue coverage.

Rev. 8/25. This material is valid as long as information remains current, but in no event later than August 1, 2026. Group Universal Life Insurance benefits are provided under policy form GUL23P, or state variations thereof. Rider benefits are provided under the following rider forms, or state variations thereof: Accidental Death Benefit Rider (GUADB); Accelerated Death Benefit for Terminal Illness Rider (GULBR); (Accelerated Death Benefit for Long Term Care with) Extension of Benefits Rider (GULTCEXT); Children's Term Rider (GUCTR); Total Disability Payor Waiver of Premium Rider (GUPWP).

This is a brief overview of the benefits available under the group policy underwritten by American Heritage Life Insurance Company (Home Office, Jacksonville, FL). Details of the coverage, including exclusions and other limitations are included in the certificates issued. For additional information, you may contact your Allstate Benefits Representative.



Allstate Benefits is the marketing name used by American Heritage Life Insurance Company, a subsidiary of The Allstate Corporation. ©2025 Allstate Insurance Company.
www.allstate.com or
allstatebenefits.com