

CIRCLE LAKE ADVOCATE



**NAVIGATION WARNING:
PLEASE STAY AT LEAST 50 FEET AWAY FROM THE AERATION SITES.**

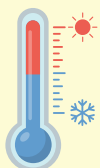


Each surface aerator is secured with three 80 foot anchor lines, flanked by three bottom aeration devices, and connected back to shore for air and power. Please do not anchor around the arrays or between an array and shore.

»»» THE CIRCLE LAKE DATABASE --- FOLLOWING THE SCIENCE

The Circle Lake “Lake Management Plan” (LMP) is addressed in some way at every Board meeting. While LMPs provide a road map for attaining lake health goals, the plans are by definition *living documents*. They are revisited regularly, and goals and predicted outcomes are adjusted based on new data & interpretations, availability of materials & services, costs, weather & environmental events, and stakeholder input.

There have been a few iterations of [Circle Lake LMPs and associated reports](#), each benefiting from new data, partnerships, and the synergy of the Board. With a growing water quality database and research library, along with commissioned studies, the CLID Board is pursuing comprehensive data storage and document retention efforts. This will allow for efficient sharing of data with partners and future boards. The comprehensive Circle Lake database is being recognized by partners and agencies alike. This positions the CLID to develop valuable partnerships that can benefit many southern Minnesota lakes.



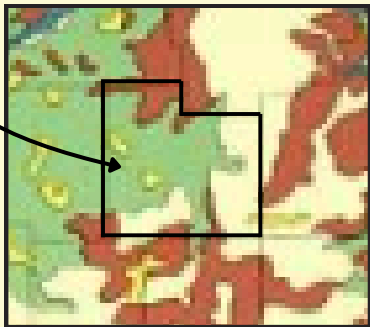
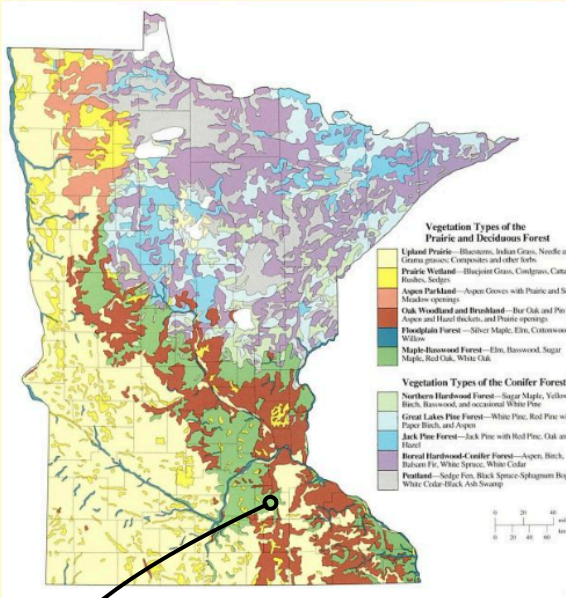
YSI's ProDSS (Digital Sampling System) Multiparameter Handheld Meter provides customization with a 4-port cable assembly outfitted to measure turbidity, pH, optical dissolved oxygen (ODO), and conductivity-temperature. This meter will be used to measure water quality at different depths, moving away from the aeration arrays. The data is downloaded to compatible software for data management, analysis, and storage.



»»» **NATURAL VEGETATION OF MINNESOTA AT THE TIME OF THE PUBLIC LAND SURVEY, 1847-1907**

The map below was adapted from *The Original Vegetation of Minnesota*, a map compiled in 1930 by F.J. Marschner from the U.S. General Land Office Survey Notes and published in 1974. Published by the Natural Heritage Program, Minnesota Department of Natural Resources, ©1988.

The Marschner Map is a reconstruction of Minnesota’s original vegetation and landscapes before widespread Euro-American settlement, created by geographer and ecologist Francis J. Marschner. It shows where prairies, forests, wetlands, savannas, and other natural communities historically occurred across the state.



RICE COUNTY

At the time of Marschner’s mapping, Rice County was largely Maple-Hardwood Forests (green), with areas of Upland Prairie (light yellow) in the west and south, and patches of Prairie Wetland (yellow) and Oak, Woodland & Brushland (brown).

This map can help residents understand the ecological foundation of their community and make more informed decisions about land use, conservation, and community well-being.

1. Protect Water Quality

- Identify historical wetlands, wet prairies, or forested watersheds.
- Restore natural vegetation that filters runoff, reduces erosion, and improves lake and stream health.
- Guide local efforts to reduce flooding and nutrient pollution.

2. Restore Native Habitat

- Select native trees, grasses, and wildflowers that are adapted to local soils and climate.
- Support pollinators, birds, and wildlife by restoring historically appropriate habitats.
- Improve biodiversity and ecosystem resilience.

3. Increase Climate Resilience

- Understand which landscapes evolved to withstand drought, fire, flooding, or severe weather.
- Use native plant communities that require less irrigation, fertilizer, and maintenance.
- Help communities adapt to changing climate conditions.

4. Guide Community Planning

- Inform park development, trail design, shoreline restoration, and open-space planning.
- Avoid development in areas naturally prone to flooding or erosion.
- Preserve natural features that contribute to community character and quality of life.

5. Strengthen Cultural and Historical Connections

- Reveal how the landscape looked before major settlement and agricultural conversion.
- Support education about Indigenous land stewardship and Minnesota’s natural heritage.
- Foster a stronger sense of place and community identity.

Healthy ecosystems support healthy communities. By understanding the natural landscape shown on the Marschner Map, residents can make decisions that improve clean water, reduce flood risks, support wildlife, expand recreational opportunities, and create more resilient and attractive places to live.

MARK YOUR CALENDARS: 2026 CLID Annual Meeting

Monday August 17, 2026

7:00 pm, Forest Town Hall

3625 Millersburg Blvd, Faribault, MN 55021



»»» CIRCLE LAKE AERATION PILOT --- STATUS UPDATE

Aerator array locations for summer 2026. Two arrays are out (green dots), with one more to be placed (red dots are proposed locations).

Continuing Objective: *To develop, test, and implement a designed aeration system to raise dissolved oxygen (DO) levels sufficient to maintain a healthy game fish environment year-round.*



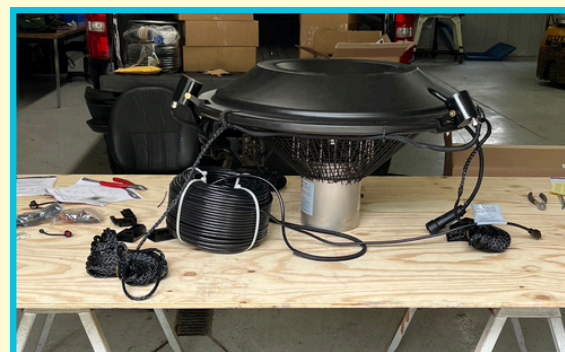
This summer three aeration arrays are being deployed (map to left). Each surface aerator has three bottom bubblers placed tangentially to create a hybrid array. Note that the aerator and blue bubbler buoys will move with the wind due to stretch in the anchor lines. The arrays have to be located in a minimum of seven feet of water to allow for aeration of a column. The locations are selected in order to take advantage of prevailing winds and currents, and allow for 270°+ oxygen dispersal and measurement.



The CLID expresses great appreciation for the parcel owners who support the hook-up of the aerator arrays. Each array requires one spool of electrical line and three spools of air hose (left) to reach up to 400 feet offshore. A kW meter (right) is placed on the line that powers the aerator, so the CLID can record the power used and reimburse the homeowner.



CLID Board member Carl Bahnsen in his shop (left) assembling a surface aerator (upside down). Power for the aerator and lighting (right) is via cables that rest on the bottom of the lake. The pontoon work boat is an absolute necessity in deploying three aerators, 12 bottom bubblers, and 16 large spools of cable/tubing; also for providing on the spot maintenance.



»»» CYANOBACTERIA BLOOMS

Hyper-eutrophic lakes experience cyanobacteria blooms because excessive nutrient levels (especially nitrogen and phosphorus), combined with warm, water conditions (as cyanobacteria is buoyant), create an ideal environment for photosynthesis and rapid growth.



Cyanobacteria is common where there is high in-lake phosphorous loading. The first appearance can look like pea soup or a blue-green paint spill (top). It can be accompanied by layers of white, red, purple, and/or blue patches, and can form mats (bottom) and crusts along the shoreline. You can use the [bloomWatch app](#) to report suspected harmful algal blooms to state and tribal agencies.

WARNING

Some cyanobacteria blooms can produce potent toxins that may cause serious illness in humans and pets through contact with or ingestion of contaminated water.



»»» EVENTS & ORGANIZATIONS

**CANNON RIVER WATERSHED JOINT POWERS ORGANIZATION
+ MINNESOTA WOMEN IN CONSERVATION**



HOLLY BUSHMAN
LE SUEUR COUNTY
ENVIRONMENTAL SERVICES



CHERYL JIRIK
LANDSCAPE
RESTORATION LLC

Children Welcome

Wednesday, June 17th
6:00 - 7:30 PM
Forest Township Hall
3625 Millersburg Boulevard,
Faribault, MN
Coffee + cookies provided

RSVP to Teresa DeMars - Teresa.Demars@riceswcd.org






**MINNESOTA WOMEN
IN
CONSERVATION**

WELCOMING WEDNESDAY WEBINAR
A LUNCH ZOOM WITH NEWS YOU CAN USE!



HARRIET BEHAR
ORGANIC FARMERS
ASSOCIATION






CANDI FULLER
NRCS DISTRICT
CONSERVATIONIST

Live Webinar!

**Wednesday, June 24
Noon-1pm**

**Demystifying
Conservation Plans**

Wildlife At Work

**Birds, Beavers, Bats, and Beneficials
Field Day at Sharing Our Roots Farm**

Tuesday, July 21, 2026 8:00 AM – 12:30 PM
4905 315th St W, Northfield, MN 55057

Join fellow farmers and agricultural professionals for a FREE, hands-on field day exploring the latest tools and research on using conservation practices to support wildlife, strengthen pest control, improve water quality, and build climate resilience on Midwest farms.

Sessions Include:

- Pollinators and beneficial insects
- Beavers and water systems
- Songbirds and raptors
- Bats for pest control
- Native plants and habitat
- Plus a farm tour

This event is FREE and includes lunch. Registration is required:
www.wildfarmalliance.org/events




This event is supported by the National Institute of Food and Agriculture, U.S. Department of Agriculture, under agreement number 2024-38640-42989 through the North Central Region SARE program under project number ENC24-235. USDA is an equal opportunity employer and service provider. Any opinions, findings, conclusions, or recommendations expressed at this event should not be construed to represent any official USDA or U.S. Government determination or policy.

Tri Lakes Sportsmen's Club




Mission Statement

The mission of the [Tri-Lakes Sportsmen's Club](#) is to protect and improve the natural resources of the Rice County area and be stewards of the outdoors in all the communities that its members reside in.



Mission Statement

[Women Anglers of Minnesota](#) supports women and children in the sport of fishing. With a 49 year history and over 1,100 members, we offer an educational, safe, and supportive environment that seeks to connect anglers of all experience levels and ages.



WAM SLAM CHALLENGE

ALL SPECIES - ALL SEASON
APRIL 1 - OCTOBER 31, 2026

PRIZE LEVEL BASED ON POINTS EARNED




ARE YOU UP FOR THE CHALLENGE?!




| SPECIES | 1 POINT | 2 POINTS | 3 POINTS |
|--|---------|----------|----------|
| BOWFIN | ANY | 19" | 24" |
| CARP | ANY | 28" | 32" |
| CATFISH (FLYHEAD OR CHANNEL) | ANY | 23" | 28" |
| CRAPPIE | 10" | 12" | 14" |
| FRESHWATER DRUM | ANY | 19" | 24" |
| GREAT LAKES TROUT (LAKE, STEELHEAD, BROWN) | ANY | 23" | 28" |
| INLAND TROUT (BROOK, BROWN, BROWN) | ANY | 12" | 16" |
| LARGEMOUTH BASS | 16" | 18" | 20" |
| MUSKIE | ANY | 35" | 42" |
| NORTHERN PIKE | 25" | 30" | 37" |
| PERCH | 8" | 10" | 12" |
| ROCK BASS | 8" | 9" | 11" |
| SMALLMOUTH BASS | 16" | 18" | 20" |
| SUCKER | 15" | 18" | 21" |
| SUNFISH | 8" | 9" | 10" |
| STURGEON | ANY | 30" | 34" |
| WALLEYE/SALMON | 18" | 22" | 26" |
| WHITE BASS | 18" | 18" | 18" |



ONLY TOP FISH OF EACH SPECIES COUNTS

FISHONKEY - REGISTER ON FISHONKEY - \$40 WAM MEMBERS
PRIZES AWARDED FOR 5, 10, 20, AND 30 POINTS

SPONSORED BY



CLID Board member Stefanie Johnson at the annual [Women Anglers of Minnesota](#) Open Water Fishing Tournament at Big Sandy Lake; 2025 with her award winning walleye (right) and 2026 on the lake with community (left).



»» YOUR BOARD



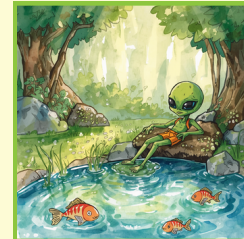
Dean Sunderlin, Chair
Bill Houston, Vice Chair
Cheryl Bahnsen, Treasurer
Denise Klokow, Secretary
Carl Bahnsen
Jeff Jirik
Stefanie Johnson
Ryan Nugent
Dawn Cherwinka

board@clidmn.com

»» TRIVIA

What aquatic invasive species (AIS) infests the greatest number of lakes and rivers in Minnesota?

- A. New Zealand Mud Snail
- B. Eurasian Watermilfoil
- C. Curly-leaf Pondweed
- D. Zebra Mussel



»» PREVIOUS TRIVIA ANSWER

Which lamprey species is native to Minnesota?

- D. A & B, chestnut and silver lampreys

Both of these lampreys are parasitic to fish. The American, American Brook, and Northern Brook lampreys are also native, but non-parasitic.

The sea lamprey is an AIS in all five Great Lakes. While it does spawn in North Shore tributaries flowing into Lake Superior, it is only infrequently found in inland lakes of northern MN.

BONUS TRIVIA QUESTION:

Who played marine biologist Matt Hooper in the original 1975 movie *Jaws*?

ANSWER:
Richard Dreyfus



He was nominated for Best Actor at the 1976 British Academy of Film Awards. He is the only surviving member of the three main characters, which included Roy Scheider (Police Chief Martin Brody) and Robert Shaw (Quint the boat captain).



»» PURSUING MORE SCIENCE

The CLID Board has approved participation in research to pilot an [eDNA testing lab](#) to monitor for zebra mussel eDNA in Minnesota's lakes and rivers. MAISRC has determined that volunteer-collected samples are as accurate as University scientists, making large-scale environmental DNA (eDNA) monitoring feasible. Public/academic/private partnerships, citizen-assisted science, and public education are vital toward collecting and compiling datasets that address Minnesota's natural resource and environmental challenges.



Time wasted
at the lake
 is time well spent.