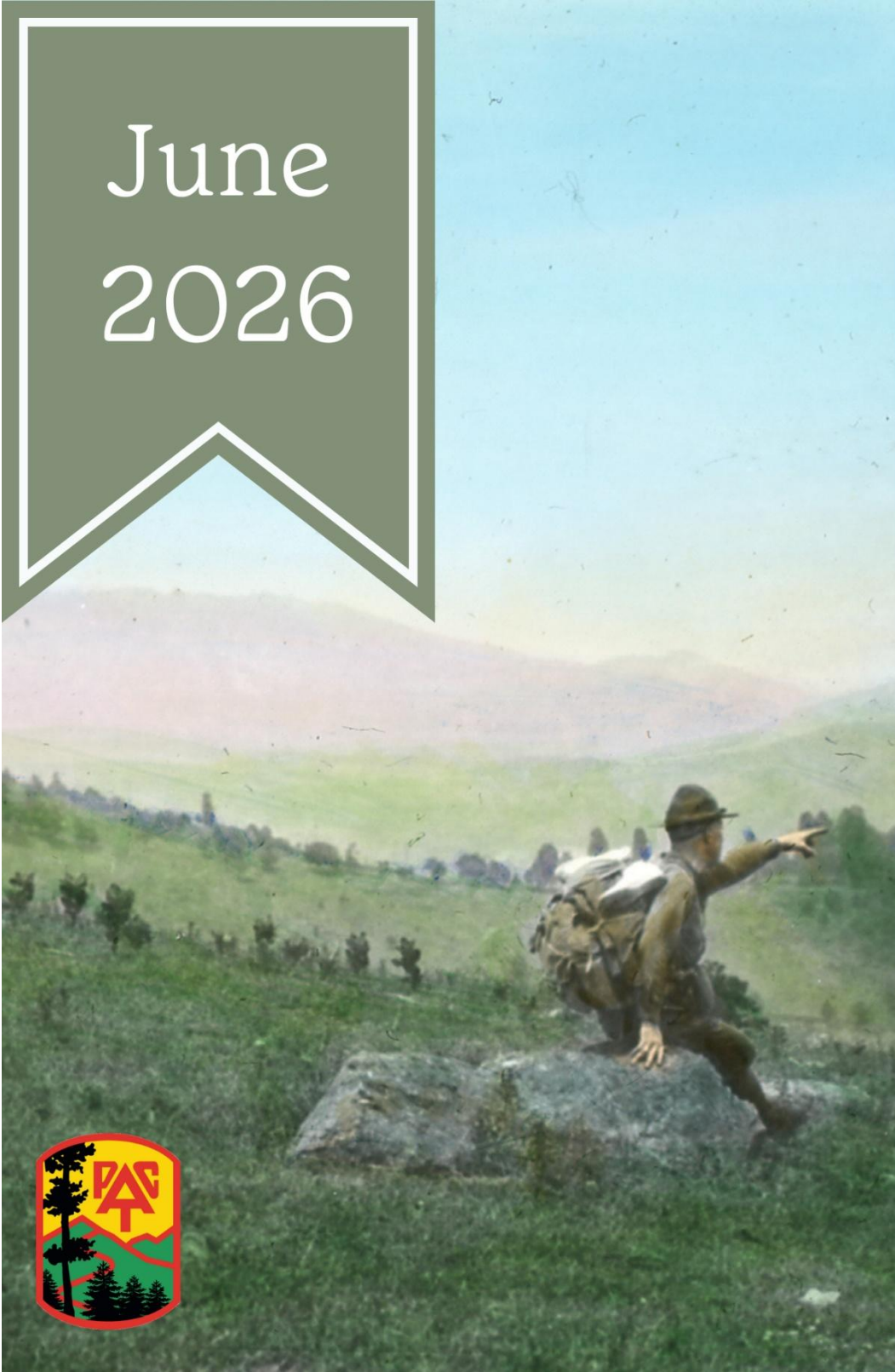


June
2026

THE POTOMAC APPALACHIAN



-A Century of Volunteers

-CentennialFest: Celebrating 100 Years of Volunteers

-Centennial T-Shirt Design Contest

-PATC Centennial Kickoff Hiking Challenge

-President's Logbook

-The Next PATC Executive Committee

-Just Published!

Appalachian Trail Guide to Maryland and Northern Virginia

with Side Trails, 19th Edition

-Hoodlums April Outing

-Cycles and Trends 1927-1977

-PATC Takes on 25 New Miles of Trails

-Visit the PATC Store for Summer Essentials

-Trail Maintenance Workshop

-Beech Leaf Disease-A New Invader to our Forest

-What's that Flower?

A Century of Volunteers

By Christopher Ede-Calton



Photo from the PATC Archives

In 1927, Calvin Coolidge sat in the White House. A movie ticket cost a quarter. The AT existed as a line on Benton MacKaye's 1921 map and almost nowhere else on the ground. That November, a small group of hikers met in Washington and decided the line on the map was not enough. They formed the Potomac Appalachian Trail Club and went into the Virginia and Maryland mountains with axes. They were not paid. They went anyway. A hundred years later, we are still going.

In 2027, PATC turns 100. The theme is the only one that fits the actual story: **Celebrating 100 Years of Volunteers.**

Civic membership organizations do not, as a rule, last this long. Since at least 2000, social



Photo from the PATC Archives



Photo from the PATC Archives

scientists have bemoaned the collapse of American civic life: bowling leagues, fraternal lodges, women's clubs, parent-teacher groups, civic associations of every kind, all of them quietly emptying out. (Robert Putnam called it Bowling

Alone.) PATC did not empty out. Members kept arriving through the Depression, the Second World War, the Cold War, the rise of television, the interstate, the internet, and every cultural shift that was supposed to make seven thousand strangers building hiking trails together obsolete. The trees still fell. The trail still needed clearing. The volunteers still came.

PATC connects people to the outdoors through volunteer service, educational, and recreational opportunities. We care for 1,200 miles of hiking trails, 49 rental cabins, and 45 hiking shelters spread across 45,000 square miles of the Mid-Atlantic. We work alongside 16 national Parks, two National Forests, and a long list of state and local park and forest partners. More than 7,100 members carry the organization. Almost everything we do is done by people who have other jobs and choose to spend a Saturday with a Pulaski instead.



This is the through-line of the centennial: the trail crews who came back after every hurricane, ice storm, and government shutdown; the cabin overseers who replaced floorboards on their own dime; the ridgerunners who walked the same ten miles for a season so a stranger they would never meet could have a better hike. The hike leaders, the shelter caretakers, the Trail Patrol, the chapter chairs, the office volunteers who picked up the phone on a Tuesday morning. None of them were paid. All of them came back. What they have been doing has a name: selfless stewardship. The mostly unrewarded, mostly unseen care of land we do not own, on behalf of hikers who will never know who maintained it. A hundred years of it is what the centennial is

celebrating.

Three programs anchor the centennial year, and each has its own article in this issue.

[CentennialFest](#) is the headline gathering. **Iva Gillet** and **Jayne Mayne** are planning it.

[The Centennial Hike Challenges](#) invite members to cover all 1,200 miles of PATC trail, individually or as part of a team in eighteen months. Iva Gillet explains how it will work.

[The Centennial T-shirt Contest](#) opens design submissions explained by **Lindsey Scannell**.

More is on the way. Chapters are planning their own events. **Matt Waurio** is running PATC's community history project, where we want to hear from volunteers and members whose stories the rest of us have not yet heard. PATC will show up at trail festivals across the region through 2026 and 2027. A new centennial logo will start appearing on club materials this summer.

What we are asking from you in 2026 and 2027 is what PATC has asked since 1927: SHOW UP. Maintain a section of trail. Lead a hike. Bring a friend to a work trip. Submit a t-shirt design. Walk a hundred miles, or twelve hundred. Send Matt a story we do not yet have on file. And, as always, connect with people and the outdoors.

The next hundred years are not guaranteed. The last hundred were not, either. They happened because volunteers kept showing up. Help us make the centennial look like the century that earned it.

If you have questions, suggestions, members we should consider for our community history project, articles you are willing to write, reach out to Jayne Mayne JMayne@patc.net.



CentennialFest: Celebrating 100 years of Volunteers

By Jayne Mayne and Iva Gillet, Co-Chairs





We are excited to announce our third annual Fest **October 2-4, 2026**. CentennialFest kicks off PATC's 100th Anniversary (1927-2027). Save the date now for a fun weekend full of friends, new and old.

CentennialFest will again be at [Caroline Furnace](#) in Fort Valley, VA, situated in the Appalachian Mountains, surrounded by the George Washington National Forest. **Early bird \$25 registration** begins August 1. **Regular \$30 registration** begins August 14. **Registration closes September 18**.

As last year's survey requested, we will offer learning opportunities Friday afternoon. Initial possible offerings are First Aid, Hike Leader Training, and Trail Maintenance Techniques. New activities will be listed when confirmed. We will also offer hikes. Bring your dinner to Moyer Lodge as club leaders present their Hawksbill and Service Awards, followed by another AT/PATC trivia contest with prizes, and a chance to meet members running for the Executive Committee (ExCom). Moyer Lodge is in the center of the Caroline Furnace Cabin Village. It has a dining room, commercial kitchen, and fireside room for fellowship and meals. Bring your camp chair and musical instruments for an evening campfire and a smile for the new friends you're sure to meet.

Saturday we will offer an early morning hike. Day activities may include Women's Trail Maintenance, GPS Basics, Trail Maintenance Techniques, Introduction to Trail Patrol, Using Hiking Apps, Hike Leader sessions, Trail Blazing, Cabin Work, Historical Lectures, Backpacking 101, and much more! Bring your drink and camp chair to Moyer Lodge for Happy Hour. **Mills Kelly**, PATC's archivist, will tell stories



about PATC's history before top awards are presented to outstanding volunteers followed by dinner. And of course, the night can't end without another evening around the campfire.

After you pack up Sunday morning, join a hike before you head home.

Saturday (6am-4pm) and Sunday (6am-10am) come to Moyer Lodge for a relaxed opportunity to enjoy coffee, tea and hot chocolate while chit chatting with other members.

Bring your own food and drink in closed containers kept in your car (yes bears do exist) except for Saturday night BBQ, which is included in the registration price.

There are two large bathhouses (Cabin Village and Sukkah Village) with hot showers, flush toilets, and electricity. Bring your bath towel and toiletries.

Lodging, included in the registration price, will again be offered Friday and Saturday nights.

- Cabin Village has 40 cabin beds in 8 cabins. Bring bedding and pillow. Think summer camp. Cabins have twin beds, electricity, one toilet and sink. Assume all genders. Must be 18 or over.
- Tents, hammocks and campers are allowed throughout Caroline Furnace except at Cabin Village.
- Sukkah Village has several screened, non-electric cabins which are first come, first serve.

Check the [CentennialFest](#) webpage as we update activities being offered.

If you have suggestions for activities you'd like to offer, reach out to **Iva**

Gillet at IGillet@PATC.net. Do consider volunteering to help us make this another successful Fest by reaching out to **Jean Stephens** at JStephens@PATC.net.



Centennial Tshirt Design Contest

By Lindsey Scannell



Prior to joining PATC, my understanding of trail maintenance stemmed entirely from my brother-in-law's annual trips at the end of spring into the backcountry in Oregon with his horse and pack donkeys to break trails ahead of the start of the hiking season. It was a solitary activity that took several weeks and reminded me of 17th and 18th century trappers setting off on their excursions. Upon joining PATC, I was promptly disabused of this notion as I came

to understand the web of volunteers that maintain the second longest stretch of the AT. Perhaps most importantly, I'm not sure that any mounted PATC volunteer could go weeks without seeing another soul on the trail, even in winter.

Since its inauguration, PATC has been a social affair. No single member could maintain the over 1,200 miles that this club is entrusted to oversee. Members and thru hikers may hike stretches of the trail (or surrounding trails) alone, but inevitably, they will meet another hiker or volunteer on their journey. For me, that is the beauty of PATC. Although you have the option to hike or maintain the trail on your own, the community is always there, just over the horizon should you wish for the company.

Everyone's reason for joining PATC is unique. For some it is the chance to work outdoors, giving back to the overall AT ecosystem. For others, it offers a community and, in some cases, a second (unpaid) career. And for still others, it offers the chance for artistic pursuits while being in the great outdoors.

As we celebrate this centennial year of PATC, we invite those interested to share what PATC means to you via a design contest. The top 3 submitted designs will be put to a membership vote and the winning design will be printed on limited edition T-shirts to commemorate the Centennial. More information can be found [here](#).

PATC Centennial Kickoff Hiking Challenge

By Iva Gillet



To celebrate PATC's upcoming 100 year anniversary, the **1200 Mile Centennial Team Hiking Challenge** will take place from June 1, 2026-December 31, 2027 for those willing to REALLY experience what 100 years of volunteers can do.

Form teams to hike 1200 *different* miles of PATC maintained trails in DC, Pennsylvania, Maryland, and Virginia listed [here](#) within 19 months. Use this [link](#) to signup for the challenge.

Team members will submit trail mileage and will be tracked in an [online reporting system](#). Discover new places and find hiking partners to

cover trails difficult for you to reach. Plan now for PATC's first hiking challenge for the Centennial celebration! Questions about the challenge? Send an email to hikes@patc.net.

President's Logbook

By Jim Fetig

In southwest Asia, military ceremonies tend to feature common characteristics. They often occur in a temporary compound circumscribed by painted canvas walls. The dais is decorated with regal potted plants



while the soldiers march in their splendid best. After completion, the canvas walls are rolled up and the potted plants carted away until next time.

That's the origin of the term "potted plant" meaning something of little more than decorative value that stands around to fill blank space. That was my role representing PATC at the visit of King Charles III to the Dickey Ridge Visitor Center in Shenandoah National Park. Fortunately, I'm experienced at this sort of thing and didn't screw it up.

It was an honor to represent everyone who volunteers as stewards of public land. Charles has been outspoken for decades in his concern for land conservation and climate change. The National Park Service and U.S. Fish and Wildlife Service representatives, including the Secretary of the Interior, were there to discuss his various interests. We potted plants mostly listened.

Highlights of the visit also included swearing in a group of local high school students as Junior Rangers and a long visit with representatives of the Monacan Nation, the First Peoples whose land encompasses much of the area.

Before the King arrived, the students were not impressed. It was obvious they didn't appreciate what was about to happen. Afterward, they were over the moon. The conversion from stoic cynicism to star-struck excitement was fun to see.

The American delegation was small, hardly more than a couple of dozen in the large visitor center backyard, leaving plenty of space for the buffalo to roam had there been any.

The King's ride was a black armored BMW. I never figured out why the King of England was driving around in a German car. Maybe he left his carriage and horses at home?

Of interest, the King's chariot arrived flying the Union Jack on the left fender and the King's standard on the right. In protocol, anything to the right of something else outranks it. In contrast, in our country, the Stars and Stripes flies on the right fender of the presidential limousine and the president's flag to the left.

The King's car door stopped precisely at the flagstone walk in front of the visitor center. As Charles slid from the back right seat, we were struck by how ordinary he appeared. He'd obviously been wearing his light gray suit all day. However, he eagerly embraced the event.

Charles himself is obviously skilled at "meet and greets." He was warm, funny and full of questions honed by years of experience. His voice was as soft as his 77 years. His lack of pretense dropped the intensity level like a dimmer switch.

The highlight of the day was an exchange of stones respectively taken from Buck Hollow in Shenandoah and from Cairngorms, the largest National Park in the UK.

The parks share the Appalachian Mountains which are the same on either side of the Atlantic. The Appalachians were once part of Pangea before continental drift split the range in half. The stones symbolize what we have in common.

If you want to see it, the stone Charles presented is on display in the Dickey Ridge Visitor Center. From now on, I'll secretly think of it as the Charlestone Visitor Center.

By the time his visit was over, Charles III, the King of England, clearly had enjoyed himself as had everyone else who had been part of his visit.

"There is no royal road; you've got to work a good deal harder than most people want to work." -Charles E. Wilson.

The Next PATC Executive Committee

By Curtis Bailey and Katherine Rindt

Attention PATC Members!

PATC needs critical leadership for the important work of maintaining our facilities, lands, and trails. Therefore, the club is looking for motivated leaders to fill club officer positions in the upcoming election in November, 2026. All 12 club-wide officer positions (see below) are up for election.

PATC is a non-profit organization with over 7000 members. Over 1000 of these members are dedicated volunteers who help maintain and preserve over 1200 miles of trails, 49 cabins, 45 shelters, and 3500 acres of conservation land.

The Executive Committee positions to be filled are listed with a brief description. More details about specific duties can be found on the PATC website under the PATC Policies and Forms link.

- President: Club leader
- VP of Operations: Coordinate trails, facilities, and lands
- VP of Volunteerism: Supports 1000 volunteers and attracts new ones
- Treasurer: Oversees budget and accounting
- Secretary: Manages club records
- Supervisor of Trails: Manages over 1200 miles of trails over 40 districts
- Supervisor of Facilities: Manages cabins, shelters, and campgrounds
- Supervisor of Lands: Manages 100+ parcels of PATC properties, right of ways, and easements
- Supervisor of Membership: Supports 7000+ members and recruits new members
- Supervisor of Communications: Manages media and messaging
- Supervisor of Outreach: Manages education and outreach events
- Supervisor of Marketing: Manages sales and marketing of the PATC online store.

If you are interested in a leadership position, like to develop organizations, and have about 10 hours a week to volunteer, we would like to hear from you. To apply or to

recommend a candidate, email nominations@patc.net or fill out an online application, which can be found at www.patc.net/joinexcom. We will contact you to learn more about your interests and provide additional information.

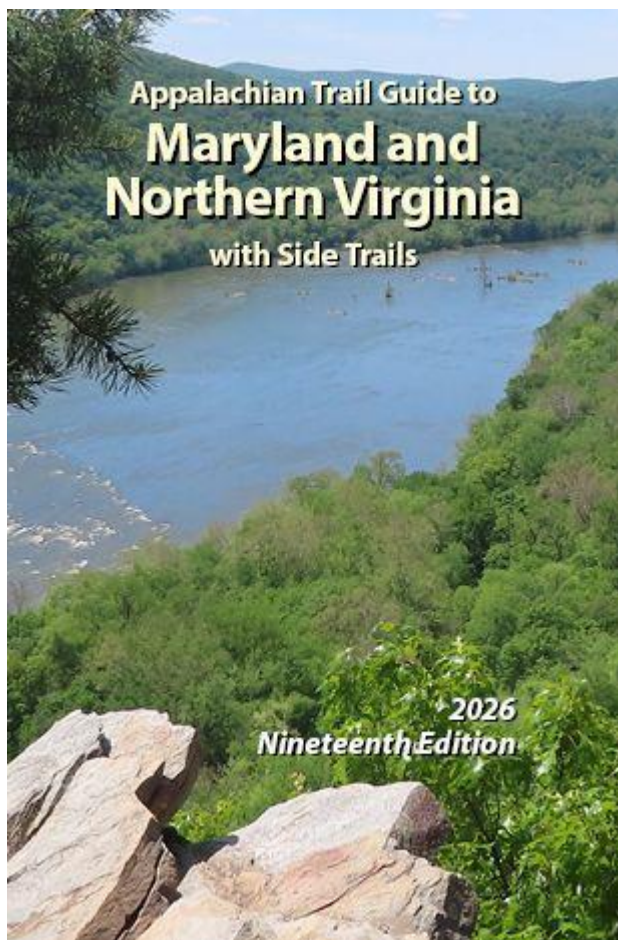
Thank you,

The PATC Nominating Committee

Just Published!

**Appalachian Trail Guide to Maryland and Northern Virginia
with Side Trails, 19th Edition**

By Alan Kahan



The “Appalachian Trail Guide to Maryland and Northern Virginia with Side Trails” (Book 6) is the go-to book for those hiking the AT from Maryland to Shenandoah National Park in Virginia. It is the companion book to PATC’s “Appalachian Trail Guide to Shenandoah National Park with Side Trails”, published in 2024. The Maryland and Northern Virginia guide is also for hikers interested in the side trails connected to or near the AT, such as Maryland’s 38.7-mile-long Catoctin Trail and Virginia’s Sky Meadows State Park trails.

This newly revised 19th edition replaces the one from 2015 and has the latest updates to the AT that include the trail’s elevation profiles, descriptions, section highlights, and informational websites. Also, a section was added to describe common invasive plant species on the AT. Finally, the First Aid section was expanded to include specific

treatment for bee, wasp, and yellow jacket stings.

Like previous editions, the book is divided into sections, which are based on areas between important road crossings or natural features. A typical section is usually 5-15 miles long. Each section has mile-by-mile detailed descriptions of the route on the AT with interesting highlights of notable places along the way. Each section also includes an elevation profile diagram, detailed information on road access to the AT, relevant maps, shelters, campsites, other facilities, and water and supply sources.

This edition was edited by Steve Huntley, a frequent hiker in Northern Virginia, trail maintainer in Sky Meadows State Park, and AT corridor boundary monitor. Last year, he edited the Northern Virginia-West Virginia section of the Appalachian Long Distance Hikers Association's "Thru-Hiker's Companion" and volunteered at the AT Conservancy Visitor Center in Harpers Ferry for two years.

The trails in this guide are shown on PATC Maps 5, 6, 7, 8, and two miles on Map 9.

274 pages, with index

Member price: \$19.96

Non-member price: \$24.95

[Buy Now](#)

Hoodlums' April Outing – Great Weather and a Large Turnout Again

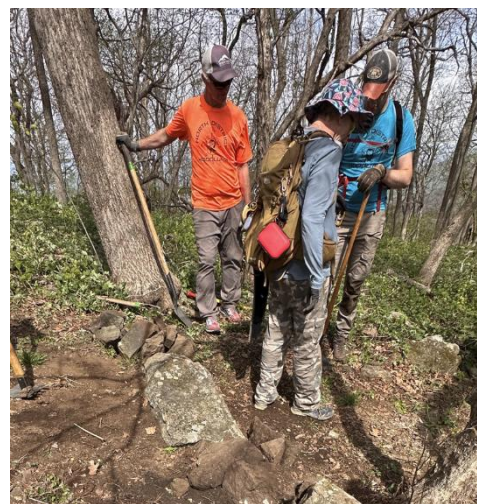
By Tom Moran and Wayne Limberg

As if a replay from March, over 40 people showed up for the April 18 Hoodlums outing, welcoming a beautiful day. Head Hoodlum **Tom Troutman** was unavailable, so **Wayne Limberg** led the morning introductions and safety discussion. The crews were formed and departed for the day's work.



by Justin Corddry: Justin Corddry's AT Crew, from left - Kevin Cwalina, Jay McCaffrey, Roger Fast, Terry Shaw, Jake Evans, Rich Lordahl and Steve Parsley

Justin Corddry's crew headed north up the AT from Hogwallow, primarily focusing on dirt work, replacing rotten wood water bars and check dams with stone and locust logs. We were working on a water bar and Justin spotted a potential perfect rock. As if on call a group of young hikers came through and somehow the question of moving a rock came up as a joke, but before the crew knew it the challenge was accepted and the group muscled a 300lb rock down the hill to its new home. Lest the reader thinks the trip was all fun and boulder games, the crew did all the regular maintenance as well, clipping back briars and cleaning out drainage. Justin's crew included **Kevin Cwalina, Jay McCaffrey, Roger Fast, Terry Shaw, Jake Evans, Rich Lordahl, and Steve Parsley.**



by Jacob Evans: Justin Corddry, Steve Parsley and Roger Fast plot next moves with the large boulder in place on the trail

Dan Hippe's crew clipped vines and saplings constricting the AT for nearly a mile near the intersection with the Pass Mountain Hut side trail. The worked trail section is clear. During break at the Pass Mountain Hut the crew removed two campfire rings located at tent sites, removed shrubs growing up around a bear pole and its access trail, and cleared a blowdown. No outstanding issues remained in the area.

Not done yet, the crew moved on to the AT north of Beahms Gap and proceeded to address



by Tom Moran: Downhill Crew: Marie Seymour, Meghan O'Leary, Alexander Clavette and Erik Kitchen

any issues encountered. The crew cut back vines and saplings sprouting with abandon in a burn area. They wrapped it up by bucking a high stepover 18-20" oak blowdown. Dan's crew included **Connor Moynihan, David Pierce, Kent and Julie Bauer, Tricia Neves, Erin Taylor, Brendan Meyer,** and 2026 Ridgerunners **Marissa Fulton and Josh Sheets.**

Back by popular demand – **Michael Gergely,** one of PATC's Certified Trail Maintainer (CTM) instructors, led his crew of five first to the Hogback

Overlook, where they went through a tools and safety discussion before heading to Sugarloaf trail for hands-on instruction. There they went through several examples of assessing existing structures and determining if improvements were needed. They then rolled up the sleeves and installed several rolling grade dips and both stone and wood check dams. The crew also inspected structures which last month's CTM crew had installed - all showed signs of holding up and successfully removing water from the trail.

The following trail maintainers completed PATC CTM Certification Modules 1, 2A, 2B, and C: **Anna Wilson, Edgar Howell, Jamie Benson, and Roger Christ.**

Tom Moran and co-crew leader **Marie Seymour** led their crew to the top of Little Devils Stairs at Fourway, where they worked the trail section down as far as the top waterfall, sidehilling multiple sections where trail was moving towards or onto the downhill edge. Marie utilized her experience with the work and moved between two sub-crews providing guidance and insight. They also rebuilt a lateral drain at a persistent problem site—a spring seep where trail was muddy for about 10 feet. Hikers had been detouring around the area enlarging the problem. With time remaining on the hike out they cleared some water bars and check dams. It was a busy day on the trail, the crew had to pause frequently as they were passed by over 100 hikers throughout the day, including two large club groups. Besides Tom and Marie, the crew included **Tim and Julie Zimmerman, Michelle and Chris Viggiano, Meghan O'Leary, Erik Kitchen, and Alexander Clavette.**

The Shed Heads—**Greg Foster, Richard Lee, Dave Nebhut,** and Wayne Limberg—were back at it this trip after a slight lull over the fall and winter. Top priority was repairing a broken windowpane on the small shed at Piney. Someone or something had broken the pane and adjoining mullion that had been in place since the shed's construction in 1934. Greg removed the entire window, replacing it with a temporary plywood panel. New Hoodlum recruit **Brendan Meyer,** who like Greg has a background in restoration and construction, volunteered to take the window home and repair it. The crew hopes to put it back in place at the Hoodlums' May 16 work trip. The Shed Heads spent the rest of the day cleaning out the small shed and sorting and storing tools and assembling a new Weber grill for the potlucks. **Noel Freeman** and **Cindy Ardecki,** who had attended a club cabin and shelter meeting at Bears Den, joined them after lunch.

Jim Fetig's crew was by far the smallest of the day, but they made up for it with a flurry



of activity as they moved from section to section, four in all, working on a list of blowdowns compiled in the pre-trip planning. They also clipped vegetation as they moved. Jim was assisted by co-swampers **Niccole Bridgland** and **Tina Rafalovich**.

The Hoodlums traditional potluck dinner after work was a popular theme – Southwestern/Tex-Mex. Multiple stoves and skillets were working overtime in addition to the large selection of sides – something for everyone!

Cycles and Trends 1927-1977

Dorothy M. Mason with an Introduction by Matt Waurio



No longer Trail, confined to the Appalachian Trail, trail work today, like that of Myron Avery, is an ever-increasing circle of responsibility for PATC

The article below was originally published in a 1977 *Potomac Appalachian* for PATC's 50th anniversary. Written by Dorothy Mason, PATC's first female president, it's a reflection on the Club's "cycles and trends" over the first 50 years. Transferred from its original print format, Dorothy's historical snapshot captures our Club's identity as a volunteer organization built around passionate stewardship and community focused on creating access to the outdoors. As we approach the PATC centennial in 2027, Dorothy's perspective remains remarkably relevant. She describes some of the challenges faced by changing social pressures like WWII, attempts (and failures) to adapt to new technologies, and the alterations of the Appalachian environment. While the volunteers, tools, and

circumstances may change, many of the Club's central questions remain familiar: How do we grow without losing purpose? How do we welcome new generations outdoors? How do we sustain the trails, cabins, and lands entrusted to our care?

Looking back on PATC's first 50 years helps provide perspective for the next hundred and reminds us that our greatest strength has always been the people willing to show up, work together, and share a love of the outdoors with others.

-Matt Waurio

Cycles and Trends: 1927-1977

Dorothy Martin Mason has served on committees, led trips, and held numerous offices in PATC—she was a member of council “for ages.” She was the Club’s first woman president, a milestone in Club history.

From the very beginning the PATC was a working club made up of volunteers dedicated to Benton MacKaye's concept of an Appalachian Trail—a trunkline from which one could explore the entire mountain range. For fifty years the Club has adhered to these guiding principles.

The Formative Years: 1928-1940

Basic activities established in the early years were all trail oriented. The early work trips were private affairs—two or three men got together and took off for the mountains for the weekend, which started Saturday noon in those days. At the end of six months the newly formed Club had cleared the Trail from Harpers Ferry to Linden. This was just in time for a joint Red Triangle Club-PATC hike.

This excursion in April 1928 was not just a fun hike—it was a publicity gimmick to show lots of people the Trail and enlist their help. Also this gave the trailmakers a chance to measure the new Trail with the trusty bike wheel and take down pertinent data for the guidebook. (Before the guidebook was printed in 1931 the editor ran trail data in the monthly Bulletin, another way of encouraging members to use the AT.)

At that time the Club courted publicity. There were items in the Washington paper about trips, items in the newspapers of countries through which the Trail went, and articles in outdoor magazines. As time went on, *Bulletin* articles describing two- or three-day hikes along the Trail were reprinted under the titles “Along the Appalachian Trail in Maryland,” “Along the Appalachian Trail on Pennsylvania’s South Mountain,” etc.

In the fall of 1928 Club worktrips were run once a month. On other weekends there were the usual small trips, open to anyone interested. The secretary, always someone with an office since the Club had no headquarters served as a clearing house. Almost in desperation the Club finally allowed women to participate in trail clearing trips—but only Class B types.

Club worktrips died when the overseer system of trail maintenance became well established. This was an unforeseen development which caused much moaning. Trailmakers were sure it would set back construction of the Trail.

Though the main trail was cut, the job was by no means over. Benton MacKaye's trail called for side trails and the workers needed cabins from which to carry on this

project. The first one, built near Pinnacles in 1930, was named for Roy L. Sexton who donated the money. (Sexton Cabin was moved to its present site when the Skyline Drive was built.) [see [History-of-sexton-shelter](#) for an update on Sexton Shelter nee Cabin]

After Sexton Cabin was built, a master plan for cabin location was drawn up. Meadow Spring and Range View followed in short order. The latter was financed entirely by the Club through evening programs and special trips.

The development of side trails paralleled cabin construction. In April 1930 seventy PATCers invaded the Hazel Country to try out the 30 miles of trail opened during the winter. It was on this trip that someone got too close to a still. The mountaineers set a fire, and the PATC retreated hastily but in an orderly fashion.

Many excursions were scouting trips. There was such a trip to Fort Valley in 1929. Myron Glaser in February 1930 led the first club trip onto Old Rag assisted by a local man who served as guide. Most popular of these scouting trips was a weekend at Skyland, then a mountain resort owned by George Pollock. Because of road conditions everyone had to go to Luray by way of Winchester. From Luray options were many: carriage all the way to the top of the mountain; bus to the foot of the mountain and transfer to horseback or shanksmare. The weekend was such a success that "the Skyland Frolic" was repeated for all the years Pollock owned the place.

Another type of excursion initiated in 1930 was summer camp. Its announced reason was "other clubs do it," and that was probably referring to the Appalachian Mountain Club. This trip to Apple Orchard Mountain in the Jefferson National Forest was also to explore the Peaks of Otter and other highlights for a Trail route. Myron Avery, President of PATC during



Figure 1 "When We Were Younger." Mildred P. Lindmer, Paula Strain, and Suzanne G. Kiminsky share a backpack meal when fires were acceptable

these years, pushed the measuring wheel 70 miles from Waynesboro to Apple Orchard Mountain to join the camp recording data all the way. He did it in three days and lost 15 pounds. Thus he lived up to his famous words, "This is truly a working club; the only property we own are trail tools."

The Appalachian Trail Conference (ATC) leaders did not expect the PATC to build the Trail all the way to Mt. Oglethorpe, then the proposed southern terminus, but there were few clubs south of Washington except those which PATC helped establish. For instance, the Lions Club of Lynchburg asked Myron to give an illustrated talk on the AT. Enough interest was aroused to form a club. They called on the PATC to help lay out a section of Trail, and enthusiastic trailmakers couldn't say "no". For years the PATC had joint trail clearing and fun weekends with many clubs so started.

PATC had a very special relationship with the ATC from the very beginning. Myron knew the chairman, Judge Perkins of Hartford, well. The PATC hosted many annual Conference meetings in Washington. In 1931 when the PATC summer camp was combined with the Conference meeting in the Smokies, Myron was elected chairman. For nine years he was ATC Chairman and PATC President. During those years it was natural for PATC to extend itself.

Club activities were expanding in other directions. The Trail was cut in Maryland and Pennsylvania to the Susquehanna River. Rent-free cabins were turned over to PATC in the latter state. The Trail was marked with metal markers which the \$1 dues of the Club did not cover. Affluent members footed the bill. The present system of trail blazing was started, using a scraper to lessen the damage to trees from the old-time axe marks.

The monthly mimeographed Bulletin was made a printed quarterly, with pages of reservation slips which one mailed to trip leaders. When plans had not been completely firmed up, cards were mailed to the membership notifying them of details.



Dr. G. J. P. Barger, on the right, takes an altimeter reading on the Appalachian Trail in Shenandoah National Park, while Wallace Haynes Walker, Washington Attorney with the Department of Justice, holds the measuring wheel and spots the distance from the

Three new committees were formed: Bulletin editor, Cabins Construction and Maintenance (reservations were not in effect until 1937 at which time they were made through the assistant secretary), and Excursions. Great changes took place in excursions. There were once-a-month trips for enjoyment. In 1934 there was a four-day historical bus trip with no hiking. At that time there was much emphasis on the local history of the Trail area and the Bulletin contained a section Historic Ramblings. A Trail history was established. There were mystery trips, again because other clubs did it. There were moonlight hikes. Weather permitting there were snowshoe trips and after 1936 ski trips in conjunction with the newly formed Ski Club of Washington, D.C., which drew heavily on PATC for members and for its organization plan. (It was not until the 1950s that the PATC gave up scheduling winter sports trips.) Nature walks to study trees and geology were added to wildflower walks which had started in conjunction with the Wildflower Preservation Society. Camera trips were an annual event as was the photographic contest started in 1929. A trip to Maine replaced summer camp.

One other activity completes this picture of the formative years—shelters, then called leantos. Most of these on public lands, state and Federal, were constructed by the Civilian Conservation Corps. Thus in the present confrontation with the Shenandoah National Park, it can be said "the park giveth and the park taketh away." Addendum: They also built some cabins managed by the Club.

As the formative years drew to a close, the entire Appalachian Trail became a reality. But joy was short-lived. The 1938 hurricane roared across New England followed by land slides. The Trail was mess. To the south the Park Service put in the Blue Ridge Parkway, following the magnificent route of the AT. Undaunted, Myron Avery and others scouted and worked out a relocation. But war clouds loomed on the horizon and time ran out before it was done.

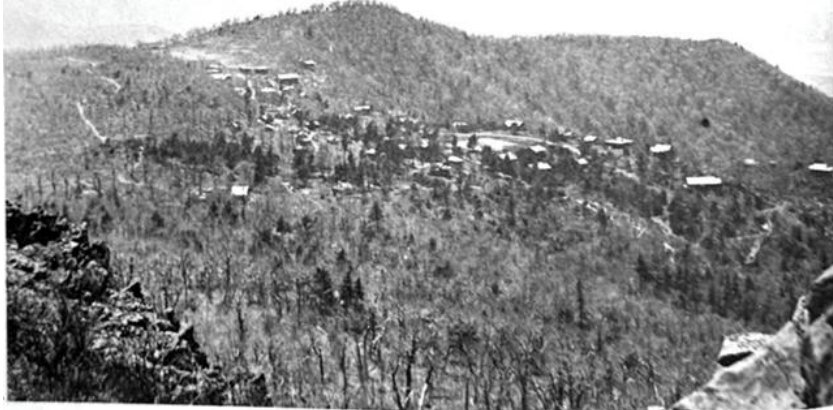
In those years of "Adventures in Arcady" my most thrilling experiences were the Trail Club's two Overnight Moonlight Hikes on the Appalachian Trail in the Blue Ridge, From the night trail we looked down on beautiful valleys under the light of full moons. At midnight we enjoyed a midnight campfire party, midnight supper, and one to two hours of complete rest.

Very early in the morning we went on into the early morning light, before sunrise, being greeted by hundreds of pale green luna moths. We climbed to the summits of high peaks to watch glorious sunrises flood miles of beautiful valleys. The conclusions of glorious experience came with breakfast parties in charming settlements and the homebound bus ride, leaving it all behind but precious lifelong memories.

-Waldburg Hewitt

War Years: 1940-1945

World War II brought changes to the PATC, many of them long lasting. Myron Avery and



Frank Schairer stepped down under pressure of their jobs. Some working members were transferred or went into the Service. An able new generation stepped in.

Gas rationing modified Club activities. The moonlight hike became a three-hour affair in Rock Creek Park after a picnic dinner. Once-a-month excursions used public transportation. The Club was allowed gas for one trail maintenance trip a month. Transportation was by a drive-it-yourself truck.

Trailworkers found sitting on the unpadded floors in toboggan fashion without so much as a tarp for covering against the elements a hilarious experience. The list of those wanting to participate was so long that early signers got on the first trip and subsequent ones were filled from the list in order of signup.

During the early 40's when the Supervisor of Trails approached a landowner about a relocation, he found that the man needed help in harvesting his apples. The Club got the relocation, and the man got help as did other orchard owners over whose land the Trail went.

Camaraderie: 1946-1959

The camaraderie established by the wartime truck held over in the PATC for about 15 years. When the war ended the Club took off with a vengeance restoring trails, resuming excursions, and settling into normalcy.

The Club bought its own headquarters on Sunderland Place in 1946, partially financed through loans from the members. When the Club was first formed, the office of the Secretary, H.C. Anderson, had been the only central mailing address. Chairmen and officers worked from their homes. Later the office of the American Civic and Planning Commission was the mailing address, thanks to the generosity of Harlean James, a Trail Club member who headed that organization. Just before the war the Club had rented its own office on H Street—one large room—followed by an office on 17th Street.

A mimeographed monthly publication was inaugurated. Forecast, as it was called, replaced the postcards in notifying members of trips and other club activities. Its entire preparation and mailing was handled at headquarters. For years the banging of the addressograph machine was a familiar sound about the third week of each month as were the accompanying expletives of the operator when mechanical difficulties set in. The *Bulletin* continued as a quarterly.

Mountaineering or rock climbing had become a Club activity in the late 1930's. By 1950 the participants gained committee status with representation on Council. (Only after the constitution and by-laws revision in 1964 were there sections.)

Wartime truck transportation had been such a success, some members formed a corporation, financed a truck and rented it to the Club at cost. It was covered. Benches were installed along the sides and hikers squeezed in—nine or ten to the side, three across the front near the cab, two in front with the driver, the rest in the aisle. It was truly cozy. the twice-a-month work trips were Club trips. They were fun.

Excursions now included nine-day camping trips—shades of summer camp—by truck to Hatteras, to Prince Edward Island, to Vermont, to New Hampshire, to Southwest Virginia. Sometimes there were two a year. Always there was a camping trip to AT conferences for meetings and hiking. Most popular of the short trips was the TTT (Truck Trail Traverse) series. These covered the entire Trail for which the PATC was responsible, working from south to north. When the series ended in 1948, there was a drop in excursion interest.

Revival came in 1952 with a series of hikes to cover the C&O Canal. It took five years and during that time—1954 to be exact—justice William Douglas led his famous hike protesting the construction of a parkway along its route. Many PATC members, including the President, joined him.

The year before that hike, PATC had established a committee to study the U.S. Department of the Interior proposal. The report to Council in February 1953 resulted in two lines of action. First, the Club President wrote to public officials and members of the Maryland legislature to the effect that the PATC was reserving judgment regarding the road from Hancock to Cumberland but urged immediate steps be taken to develop recreational facilities suitable for hikers, cyclists, nature students, canoeists, and others at a number of places throughout the length of the canal. Second, a meeting of the general membership was called to hear a representative of National Capital Parks explain the roadway proposal. Members of other organizations opposing the parkway attended and were most unhappy that PATC did not pass a resolution right then backing their position.

After the Douglas hike, the Council voted to have the President represent PATC on the Douglas committee, thereby backing him. This touched off some loud protests from members who felt the Club was getting involved in politics and from some who were not sure the road was all that bad.

An outgrowth of the Club's C&O Canal Study Committee was the establishment in 1953 of the Conservation Committee. Its purpose was to study conservation of resources, reforestation, flood control and use of public lands, especially in areas of direct concern to the PATC. It was a reportorial committee, not an activist force.

published in the *Bulletin* said:

"Human contact with the outdoors, call it recreation or education or conservation or what you will, is, I believe, ripe for a new approach. Take your Appalachian playground from Maine to Georgia. Here is a chance to do for wilderness history what you actually did do for wilderness geography, namely fit the parts together in one big whole. There were separate trails north and separate trails south as well as in between; each had its separate geography; and you fitted them all together in one geography— that of the Appalachian Trail. In every section on this trail in every valley leading from its crest, there are hundreds of separate objects of interest to be seen or found; there are birds overhead, worms underfoot, trees and waterfalls between; each has its separate history, its special role to play. As with the separate trails, so with the separate roles, you can fit them all together in one big history— the drama to the Appalachian Wilderness. In this way you dramatize the unseen drama.

You should ask me what is the use of such an approach? My first answer would be that it would compound the fun of tramping the Trail. That alone would be sufficient answer. But I'll add a hardboiled answer. Not until there is broader cultural interest in nature and its processes shall we stir true economic interest in the conservation of nature's resources. This is something that must be tackled from both ends. It is not enough to have skilled experts in Washington, however great their know-how. There must also be know-what on the part of the folks themselves dwelling throughout the land.... For economic reasons, then, as well as cultural, we need widespread literacy in terms of the open book."

PATC members read and half heeded. There were nature walks and there were lots of nature articles in the *Bulletin*. But there were so many other activities! The Hermitage Cabin had been built, Corbin was coming. Maps were being improved. Side trails were being reopened. The Trail was once again complete—Maine to Georgia. All was well.

Well, almost! At Ashby Gap someone shot a cow belonging to the landowner where a PATC shelter was located. He closed the shelter and the Trail. The Club took to the road and built a shelter elsewhere. A few houses were appearing near the Trail on Rt. 601. Wilson Shelter was an attractive nuisance luring beer parties from Charles Town. The Conservation Committee tried to stimulate the membership with an article about Federal ownership of the Trail, purchase of the Trail route by the PATC, and easements. They followed up with a study of land use. Membership interest but no burning drive resulted.

Club worktrips waned in the late '50s just as they had in the mid-'30s. War neglect had been caught up. There was not enough work for large groups and the distances were too short for a good hike. Overseers resumed private trips.

Excursions took up the slack again with innovations: Saturday hikes which got people back to town by mid-afternoon; Sunday afternoon rambles; trips for the teenagers, mostly sons and daughters of members; family trips for those with young children; bushwhacking weekends. The aim: total participation and camaraderie for all.

Financially, PATC was doing well. Notes on the Sunderland Place headquarters were paid off. The Conference paid \$15 a month rent for use of the basement room. The Club ousted its other tenants and took over the two upstairs floors. There was a place for programs and that committee chairman took advantage of this, scheduling them once a week for a while. Prior to that programs had been spasmodic, two to six a year besides an annual dinner and picnic.

In this period of camaraderie picnics became more organized with a committee providing food rather than individual brown bagging. Games were planned for the youngsters and swimming for all. Annual dinners frequently drew on Club members' talents for programs: speakers, musical solos and satirical skits.

Organizationally, there were changes: cabins and shelters maintenance were separated, a Publications Chairman was appointed to oversee guidebooks, Bulletins, Circuit Hikes (then new), and other publications.

Council debated loud and long about advertising trips, eventually deciding not to. The question of hiring office help was also thrashed out in several meetings. Though finally approved, it didn't take place. A member listed her home phone as the daytime number for the Club and made plans to have someone on hand for deliveries or relayed urgent messages to chairmen.

Growing Up: 1960-1967

In the early 60's camaraderie gave way to practicality, It all started when the Park Service began nudging the Club about insurance to replace cabins in case of fire. The cost was prohibitive so Council voted to raise cabins fees and set aside 25 percent for replacement of old cabins and construction of new ones. At the same time an initiation fee was voted. Publication prices were raised. Instead of selling publications at slightly over cost, a policy started in the depression years, there was a substantial mark-up to take care of the continually rising replacement costs. Lastly the Club sold the truck which it had bought from the corporation when it disbanded. Though handy for transporting camping duffle and materials for shelter and cabin work, it did not pay for itself. Furthermore its size limited the number of participants on trips at a time when membership was growing.

During the next few years, the PATC acquired real estate. In 1963 Kathryn Fulkerson deeded her place in Harpers Ferry, High Acre, to the Club. In 1965 the Keysers of Linden gave PATC Mosby Shelter and a 10-foot right-of-way for the miles of Trail across their land, The present headquarters building was bought—again partially financed by loans and outright gifts from the members. This purchase culminated five years of looking and rejecting; looking, bidding, and being rejected. Then in 1966 the Club inherited Jewell P. Lindmer, Paula Strain, and Glass' cabin on the Massanutten, known to members as Glass House.

Two events highlighted 1964. One was "Operation Paint Blaze." Seventy-five to eighty able-bodied PATCers participated as the Shenandoah National Park permitted blazing for the first time. By mid-afternoon the job was done— all 100 miles! The second event was an exhibit to end all exhibits held at the Smithsonian in mid-summer. The public viewed 10 booths depicting all facets of Club activities. There were slide lectures three times a day, narrated by Club members. There were four evening programs featuring the Secretary of the Interior, the Secretary of Agriculture, the Chairman of the Appalachian Trail Conference, and a demonstration of light-weight equipment. The Club had never before put on anything of this magnitude and variety.

Also during these "growing up years" PATC members worked with ATC officers to get Federal protection for the Appalachian Trail. (This was seven years after the Conservation Committee article had suggested Federal ownership of the AT.)

Meanwhile, the Club came out in opposition to the Bryson City (N.C.)-Townsend (Tenn.) Road through the Smokies. It also campaigned for a wilderness area in the Shenandoah National Park. And finally, after years of discussion the Big Blue Trail [now the Tuscarora] was launched and PATC took over that portion south of the Potomac.

As 1967 drew to a close, PATC celebrated its fortieth birthday with a program in the Natural History Museum auditorium. A skit depicting Benton MacKaye's dream and how it actually

worked out was followed by a talk by Frank Schairer, last surviving charter member. In it he said:

"One of the things we should concentrate on in the Trail Club—which we haven't done enough of—is the concept of providing focal points such as our shelters from which you can go in all directions. You can spend a week or more," He gave Sexton Cabin as an example and said his only regret was that there was only one shelter there—"there should be five or six."

"We've got to think bigger," continued Frank. "Many think 'Don't do anything now that we have the Appalachian Trail; we have plenty to do just to keep the Trail open.' That's a bunch of nonsense. That isn't Benton MacKaye's dream. The AT is a trunkline to radiate hundreds of miles more than the main Trail itself."

Expanding Horizons: 1968-1977

Securing the Trail route has been the predominating activity of the PATC for the past nine years. The long awaited protective legislation came in 1968 with the passage of the National Scenic Trails Bill. It should have been a time for Dan Hoch and Myron Avery to rest easy in their graves. The former had introduced the first bill to protect the Trail in the 1940s, and Myron in his valedictory read to the ATC in 1952 advocated Federal protection. It should have been a time for PATC to relax and breathe easy.

Such was not the case. Local clubs all up and down the Trail had to mark the route for aerial photography. That was simple compared to the waiting that followed. States had to pass enabling legislation to obtain easements. Landowners fought such action, particularly in Northern Virginia, even some who had allowed the Trail on their property. Finally, a Trail route was published in the Federal Register. Landowner opposition grew. The Federal government dragged its heels. The Appalachian National Scenic Trail Advisory Committee was allowed to die, and only through the efforts of PATC was it revived.



Faced with delays the PATC took steps on its own. Ownership of land along the Trail was recorded. The Trail was located onto lands where easements were given. The Club campaigned for a land acquisition fund to buy land on which to route the Trail. First the membership, then outside groups were tapped. Young people joined in sponsoring walk-a-thons. A shift in administrations, a new

climate in Congress, the future looks good. Today the aim is to secure the wilderness aspect by protecting the Trail from intrusions, sight and sound, buying 100 feet or more on either side.

The protection of the Trail brought more use of shelters and cabins as well as of the Trail. PATC has expanded its cabin chain to meet increased demand. Those cabins on Federal lands, however, are in jeopardy as more individuals complain of discrimination and as other groups seek similar privileges.

To alleviate overuse of the AT, the Club has expanded its horizons for hiking trails on both sides of the Blue Ridge. Construction of the Big Blue continues. Trails have been scouted and constructed in the Massanutten and Bull Run Mountains. Plans are underway to develop trails around Sugarloaf in Maryland, in Shenandoah National Park, in Rock Creek park, in Virginia west of the Shenandoah Valley.

In The Plains, Va., the Club laid out trails which will be used for interpretive education and scientific study. More and more people out of the Metropolitan Area living near the Trail are becoming active in PATC trail and shelters work.

To counteract the complaints of landowners the PATC in 1973 hired a patrolman to see how many and what types of people were using the Trail and shelters in Northern Virginia and to educate people on the proper use of both. In subsequent years, more patrolmen were hired per season. Another educational move of the time—annual trips for Congressional committees involved in the AT.

During this period excursions went through the usual cycle. In 1968 participation was up. Five years later interest had dropped to the point the chairman recommended discontinuation of excursions altogether.

Meanwhile, two committees were established in 1972, both to have an effect on the preservation of the AT. One was the Long Range Planning Committee whose task was to analyze what PATC would be like in 1985 and recommend steps to meet the changes. The other was the Conduct Committee, which was to set up do's and don'ts of trail and land use and to consider Club input into policies of land managing agencies affecting recreation.

Recommendations of the Conduct Committee to limit the number of people in hiking groups to 20 and to take pleasure trips off the overused AT were adopted by the Excursions Committee. Thus the Club trips today are largely nature walks, Saturday afternoon hikes, and midweek hikes near town or backpacking weekends and extended trips to far-away places.

Expansion also meant new activities. Compass reading and cross country practice led into a full-fledged Search and Rescue Committee. A ski touring section has been formed. Once-a-month brown bag lunches with coffee and dessert provided have drawn consistently good numbers. The most recent addition to the programs is the arts and crafts show in the fall.

In expanding its horizons the Club broadened its conservation policy, permitting officers to speak on matters affecting the Trail and the D.C. area. PATC has become more involved in environmental issues—opposing a power line crossing the Trail in Virginia where an existing right-of-way could be used; supporting the Eastern Wilderness Bill; continually prodding in regard to the Shenandoah National Park Wilderness; urging members to help fight a power plant in the St. Anthony's Wilderness in Pennsylvania; sponsoring a conservation trip; actively participating in the West Virginia Highlands Conservancy.

Administratively, PATC developments showed signs of maturity. Help was hired to take care of time-consuming routine matters and affairs which could not be done by the evening volunteer staff or committee chairmen on offwork hours. More paid help has been recommended by the Long Range Planning Committee. The Club successfully solicited free trail clearing and cabins construction materials. At the end of 1976 there was \$21,724.59 in the treasury, a fortune compared to the \$8.26 balance of 1929. Lastly, the Club and the ATC cut the physical tie when the latter moved to Harpers Ferry, leaving the fourth floor of headquarters free for the Library and a small meeting room.

After 40 years the PATC *Bulletin* was discontinued as was the not-so-old *Forecast*. Replacing them is Potomac Appalachian. As a larger monthly publication it carries items of interest about the Trail, conservation, and other matters of concern to the Club as well as a calendar of events to come. One important addition has been "Letters to the Editor," providing a long-needed exchange of ideas among members. A new circuit hike route is printed each month giving ideas for trips off the AT just as 40 years ago articles on the Trail encouraged people to use it. The annual or semi-annual PA Magazine has replaced the quarterly *Bulletin*.

As in the early days, most PATC activities are still Trail oriented. Work trips are the fun Club trips, excursions are at low ebb. The old problems still exist: unauthorized use of cabins, vandalism, non-hiking use of trails. In earlier days horseback riders annoyed the membership; today it is off-road vehicles.

But the Club has not come full circle: rather it is making a widening spiral, embracing more territory and expanding its outlook. There will be fluctuations, additions and deletions, but when 2027 rolls around the PATC will still be a working club dedicated to making the Appalachians a greenway, not just for recreation but for re-creation—which is what Benton MacKaye had in mind.

PROPHECY

“The Appalachian Trail is, so far as possible, a wilderness footpath, and hence requires a primeval environment. We are accused of selfishness in seeking to preserve as inviolate as possible the primeval condition of the more or less narrow strip of mountainous country through which our trail passes. If it were made more accessible by automobile roads, scaling its heights and permeating its depths, hundreds of thousands more could enjoy the scenic beauties of this region which we would have restricted to a limited few. The answer is that the numbers who can enjoy a primeval environment are necessarily limited. The great mass of people probably have not the capacity to enjoy a primeval environment. If hordes are thrown into a primeval environment it soon disappears. It is possible to reach a saturation point, Therefore, our trail should not be made too accessible...”

– H.C. Anderson, 1932

PATC Takes on 25 New Miles of Trails

By Jess LaPolla



Gambrill Mill Trail

scenic mountain landscapes.

The expansion brings several notable public lands into the PATC footprint. PATC now maintains trails within [Monocacy National Battlefield](#), a historic landscape preserving the site of the Civil War’s “Battle That Saved Washington”, as well as [the Seneca Creek Greenway Trail](#), a beloved natural corridor featuring wooded trails, bubbling streams, and accessible outdoor recreation near the Washington metropolitan area.

In addition to increasing hiking opportunities, this expansion reflects PATC’s ongoing commitment to protecting, maintaining, and improving access to trails across the Mid-Atlantic region. With these new additions, hikers can look forward to more diverse hiking experiences, improved circuit hike possibilities, and stronger connections between existing trail systems.

To support the expanded network, the District Manager for Antietam National Battlefield will also oversee trail management at Monocacy National Battlefield. Meanwhile, the district managers for the Monocacy Natural Resources Management Area will assume management responsibilities for the Seneca Creek Greenway Trail.

View all of Monocacy’s [hiking trails](#) and check out the [Hiker's Guide to Civil War Trails in the Mid-Atlantic Region](#) to learn more about Monocacy National Battlefield.

The trail network maintained by PATC just got bigger! This is exciting news for hikers looking to explore new terrain.

PATC has officially added 25 new miles, significantly expanding opportunities for longer loops and additional circuit hikes throughout some of the region’s most

If you are interested in volunteering for any of these new trails, please contact the [district managers](#) or the trails coordinator, Heidi@patc.net.

Visit the PATC Store for Summer Essentials

By Jess LaPolla

If you're anything like us, you're planning on spending as much time outside as you can this summer. A day on the trail, a night under the stars, lounging on the banks of a cool river, or looking out over rocky summits. Whether you're heading out for a quick day hike, a weekend camping trip, or a longer backcountry adventure, preparation is the key to staying comfortable and safe in the heat.



Stay Cool on the Trail

Summer hiking offers incredible rewards — lush green forests, mountain sunsets, sparkling swimming holes, and flora in full bloom, but it also comes with challenges like heat, humidity, and sun exposure. A few lightweight essentials can make a huge difference in keeping you cool and comfortable.

One of the most useful warm-weather trail accessories is a [cooling towel](#). After soaking it in water, these towels provide refreshing relief around your neck or head while slugging up steep switchbacks on a hot afternoon.

[Bandanas](#) are another classic hiking staple that never go out of style. Lightweight, versatile, and easy to pack, they can be used as:

- Sweatbands
- Neck/head protection from the sun
- Cooling wraps when soaked in water
- A cute accessory for your four-legged friends

PATC's branded bandanas let hikers show their trail pride while carrying a practical piece of gear that earns its place in every pack.

PATC also has a fun selection of [baseball hats](#) to choose from to keep the sun out of your eyes and the hair out of your face on those long days outside. Don't forget to bring sunscreen, plenty of water, electrolytes, and food on all your outdoor adventures.

Finish off your preparation by knowing the area you'll be hiking or camping in. Check out PATC's wide variety of maps and guidebooks, including the new [Appalachian Trail Guide to Maryland and Northern Virginia](#).

Whether you're staying at one of PATC's cabins, backpacking to a shelter, or setting up camp in the mountains, the right gear helps you spend less time worrying and more time enjoying the experience.

Gear That Gives Back

Every purchase from the PATC store supports the trails and places you love. Proceeds help fund trail maintenance, cabin preservation, volunteer programs, education initiatives, and outdoor recreation opportunities throughout the region.

So, before your next summer adventure, grab a cooling towel, throw a bandana in your pack, grab a guidebook, and hit the trail. [Explore the new store!](#)

Trail Maintenance Workshop

Saturday and Sunday, September 19 & 20, 2026

Shenandoah National Park - North District

For more than 35 years, the PATC's Hoodlums Trail Crew and SNP staff have conducted a Trail Maintenance Workshop in the North District of the Park. The objective is to teach basic skills to new and prospective trail maintainers and to provide experienced trail maintainers advanced training in trail design, construction, and maintenance. SNP trail professionals and experienced PATC crew leaders provide instruction that will help novice and veteran trail maintainers alike. Workshop participants typically camp for the weekend at the Mathews Arm Campground in the North District of the Park. Participants will have free entry to the Park and Campground.

The Workshop will begin Saturday morning at 9:00 a.m. and end Sunday at 1:00 p.m. Participants are encouraged to arrive Friday afternoon/evening and camp at Mathews

Arm, socialize with other participants, and thereby avoid an early-morning drive. The fee for the workshop, which includes dinner Saturday and breakfast and lunch Sunday is \$45.

The workshop is limited to 30 participants, which we typically reach by early-August. The registration deadline is Friday, September 4. For more information contact **David Nebhut** via e-mail: david.nebhut@gmail.com or by phone: 571-465-1041.

Space is limited, register today!

If you are ready to register click [here](#)

Participation in the Workshop is available only to PATC members age 18 and above, and registration in advance is required.

Beech Leaf Disease – A New Invader to our Forest

Article and photos by Rob Lamar



Over the last century, eastern forests have undergone dramatic change due to the impacts of numerous invasive forest pests and diseases, including Chestnut Blight, Hemlock Woolly Adelgid, Emerald Ash Borer, and Spongy Moth.

Beech Leaf Disease (BLD), caused by the microscopic nematode *Litylenchus crenatae*—believed to have originated in Asia—is the latest major threat to our forests. The nematode feeds on and damages the American Beech (*Fagus grandifolia*). First identified in the United States in Ohio in 2012, the disease spread eastward, reaching Pennsylvania in 2016 and Virginia in 2021. In 2024, PATC volunteers were the first to document the disease in Clarke County on AT lands. Since then, it has continued to spread rapidly and the disease is expected to spread throughout the PATC region within the next few years. Researchers believe the microscopic nematodes are dispersed primarily by wind and rain.

The nematodes overwinter in Beech buds, where their feeding alters the development of emerging leaves. Symptoms of infestation include thickened and distorted leaves, dark banding between leaf veins, thinning canopy, and eventual tree mortality. Beech decline and mortality are already being observed along sections of the AT in northern Virginia.

At present, biological control is unknown for Beech Leaf Disease, although several chemical treatment methods are being investigated. Trunk injections of Arbortect 20-S, while expensive, have proven effective in protecting individual trees for up to two years before retreatment is required. Potassium phosphite treatments have also shown promising early results and offer a more cost-effective alternative to Arbortect, enabling land managers to treat a larger—though still limited—number of forest trees.

Beginning in May, the PATC, under the leadership of PATC volunteer and retired entomologist **Dr. Ray Barbehenn**, is partnering with the National Park Service and Dr. Richard Cowles of the Connecticut Agricultural Experiment Station to evaluate the effectiveness of two phosphite treatment methods—basal bark applications and trunk injections—in preserving beech tree health on private and federal lands in northern Virginia. It is hoped that phosphite treatments may help preserve ecologically significant beech trees on National Park Service lands until a long-term biological control can be developed.

A fact sheet from The Connecticut Agricultural Experiment Station is at https://portal.ct.gov/-/media/caes/documents/publications/fact_sheets/valley_laboratory/beechn-leaf-disease-management-options.pdf).

*Ray Barbehenn has been preparing this column for many months. He is taking a break from writing for a couple months to work on the Beech Leaf Disease problem.

What's that Flower?

Article and photos by Richard Stromberg



Bristly Sarsaparilla

This article shows you some of the flowers to look for in June on the Tuscarora Trail north of Dry Gap. The trail is described in Section 16 of the PATC publication “[The Tuscarora Trail a Guide to the South Half.](#)” This is a popular trail section because of the spectacular view from Eagle Rock, one mile north of the Dry Gap parking.

As you approach the Eagle Rock viewpoint, you will see evidence of the November 1, 2024, fire: blackened earth, logs, and bark at the bottom of trees. **Bristly Sarsaparilla** (*Aralia hispida*) is known for sprouting in burn areas, and you will see it here. The upper stems can be smooth and only the lower stems, bristly. It is a northern plant categorized as rare in the PATC area. Its tiny white flowers are in a rounded umbel. A large population existed under the power lines three and a half miles from the parking but has been dwindling without fire there.

Other species to look for along this trail section are described below. All are native unless otherwise noted.

Striped Wintergreen (*Chimaphila maculata*) is only a few inches tall. The leaves are long and toothed with pale yellow along the veins. The flower stalk above the leaves has a few white flowers on top. The flowers hang down from their individual stalks and start out as round balls. Five petals open to about a half inch across and face downward. If you lift one up, you will see a large round stigma in the middle surrounded by ten, two-part stamens. A brown fruit develops and turns upward.

Ghost Pipe (*Monotropa uniflora*) is a parasite. It produces no food of its own and shows no green. It gets food from fungi as explained in William Needham's Hiker's Notebook (<http://hikersnotebook.net/The+Mushroom+Chronicles+-+Mycorrhizas>). It is white with one flower and looks like a tobacco pipe standing on its stem. Vestigial, white, scale-like leaves alternate along the stalk. The flowers at first point downwards but then turn upwards to ripen the fruit.



Ghost Pipe flowers

Whorled Loosestrife (*Lysimachia quadrifolia*) grows up to three feet tall with a series of whorled leaves spaced up the stem. The whorls usually contain four leaves. The leaves have no stem or a very short one. The solitary, star-shaped flowers grow on one-to-two-inch stems from the axils of the upper leaf whorls. The petals are yellow with red at the base.

Dwarf Spiraea (*Spiraea corymbosa*) is a shrub up to one meter tall. Leaves are ovate with toothed edges. The white or pinkish, tightly packed, quarter inch, five-petal flowers grow in a flat or slightly rounded form called a corymb.



Oxeye Daisy

Oxeye Daisy (*Leucanthemum vulgare*) is the typical daisy: a single flower on a long stem with a yellow central disk surrounded by many white rays. The flower head is bigger, and the rays are fewer and wider than the Fleabanes. The leaves, particularly on the stem, are long and narrow with irregular, pointy lobes. It is not native.

Fleabane (genus *Erigeron*) flowers look like daisies, but the rays are very thin, and there may be up to 400 of them. The central disk is yellow, and the rays are white or tinged pink. **Annual Fleabane** (*Erigeron annuus*) has many stem leaves, and they are toothed. **Daisy Fleabane** (*Erigeron strigosus*) stem leaves are sparse and have smooth edges.

Deptford pink (*Dianthus armeria*). Several Deptford pink flowers sit on top of spindly stems. They have narrow, paired leaves, and the half-inch flowers have five bright pink petals. It is not native.



Deptford Pink

Bird's-foot Trefoil (*Lotus corniculatus*) flowers have the typical pea flower form with the upper banner petal, lower two petals forming a keel, and two wing petals, all bright yellow. A group of flowers circle at the end of the stem like a crown.

The plant stems tend to trail along the ground. The leaves have five leaflets: two flush against the main stem and three further out. It is not native.

Common Mullein (*Verbascum thapsus*) is up to 8 feet tall with fuzzy-leaved stalks topped by dense spikes of yellow flowers. They are biennials, and the first year you see rosettes of large, soft, fuzzy leaves on the ground.

Help Wanted for May

Wood Sign Maker- contact John Hedrick at C 703-403-1479, jhedrick@erols.com

Shelter Volunteer

Henry Horn ~ 301-642-1122 patcshelter@comcast.net

Paul Gerhard Shelter ~ PATC map F

District Manager ~ Ashby / Possums AT & Blue blazed [Rte. 50 to SNP] ~ Map 8, 9

Jon Rindt ~ H 540/635-6351, jkrindt@comcast.net

District Manager ~ SNP South Blue-blaze [Map 11]

Wayne Limberg, H 703-533-8639, C 703-216-2396

Co- District Manager ~ Tuscarora Central [Map L]

Bill Greenan, wpgreenan@yahoo.com

SNP North District Blue blazed ~ Map 9

Tom Moran, (703) 715-0050, twmoran19@gmail.com

Fork Mountain Trail ~ Co ~ Piney Ridge Trail to Hull School Trail (1.1 mi)

Jeremys Run Trail (middle) ~ Co ~ 8th Ford of Jeremys Run to junction Knob Mt. & Neighbor Mt. Trail (2.7mi)

Tuscarora Trail ~ SNP Boundary to Thompson Hollow Trail (1.5 mi)

SNP Central District Blue blazed [north] ~ Map 10

Patrick Wilson ~ pwilson@hsc.edu

Eugene "Buz" Groshong ~ 540-522-6749, buzgroshong@verizon.net

Josh Fuchs (703) 346-4842, jrfuchs48@gmail.com

Hot Mt.-Short Mt. ~ Hazel Mountain Trail to Nicholson Hollow Trail (2.1mi)

SNP Central District Blue blazed [south] ~ Map 10

John Hedrick ~ 540/987-8659, jhedrick@erols.com

Rock Spring Parking/Cabin/Hut ~ Rock Spring Parking to AT/AT to Rock Spring Cabin & Hut (.2mi)

Rock Spring Cabin/Hut Spring Trail ~ Rock Spring Cabin & Hut to spring (.1mi)

SNP South District Appalachian Trail ~ Map 11

Bob Pingry ~ 434-981-5094, bobpingry@gmail.com

AT ~ Co ~ Loft Mtn Camp Store trail to Loft Mountain Amphitheater trail (1.3)

SNP South District Blue blazed ~ Map 11

Wayne Limberg, H 703-533-8639, C 703-216-2396

New District Manager Needed

Brown Mountain - Brown Mountain Summit to Big Run Portal Trail (3.5

mi)

Gap Run Trail - Junction of Rocky Mount Summit Trail to bottom of Gap Run (1.50mi)

Rocky Mountain Run Trail ~ Big Run Portal Trail to Brown Mtn. Trail (2.7 mile)

Furnace Mountain Trail (Upper) ~ Furnace Mountain Summit Trail to Trayfoot Mountain Trail (2 mile)

Pennsylvania Tuscarora ~ Maps J & K

Chris Firme ~ 717-794-2855, bncfirme@innernet.net

Dave Trone ~ 717-778-1308, traildavidt@gmail.com

Pete Brown 410-207-2921, trailpete@gmail.com

PA Tuscarora [J] ~ Fowler Hollow shelter to Hemlock Rd (2.2mi)

PA Tuscarora [J] ~ Mountain Rd. to Jct. PA 641 (6.2mi)

PA Tuscarora [K] ~ Alice Trail to Yellow Blazed Trail (4.2mi)

PA Tuscarora [K] ~ Yellow Blazed Trail to PA 456 (6.7mi)

Tuscarora Central ~ Map L

Bill Greenan ~ wpgreenan@yahoo.com

Co-District Manager needed

Tuscarora Trail ~ Burnt Mill Bridge to Lutkins Passage (3.2mi)

Tuscarora Trail ~ Meadow Branch to Eagles Nest Parking (2.2mi)

Tuscarora Trail ~ Eagles Nest Mt. Parking Lot to Meadow Branch Trail (3mi)

Tuscarora Trail ~ Larrick Overlook to Lucas Woods Trail (2mi)
Tuscarora Trail ~ Sleepy Creek Registration to Hampshire Grade Road (5.6mi)
Tuscarora Trail ~ Hampshire Grade Road to High Rock (2.7mi)
Tuscarora Trail ~ Co ~ Lucas Woods Trail to Powerline (3.5mi)
Tuscarora Trail ~ Sleepy Creek WMA Border to VA 671 (Shockeysville Road) (4.1mi)
Tuscarora Trail ~ US 50 (Back Creek) to Gore Access Trail (1.3mi)
Tuscarora Trail ~ Co ~ Powerline to Dry Gap (3.5mi)
Devils Nose Connector Trail ~ Devils Nose Parking Area to Tuscarora Trail (.5mi)
Spruce Pine Hollow Trail ~ Tuscarora Trail to Spruce Pine Hollow Park Trailhead (.10mi)
Tuscarora Trail ~ Gore Access Trail to Hunters Cabin (Forest Road Crossing) (2.1mi)

Massanutten North ~ Map G

Steven Parsley, 443-864-3606, mbspeak2000@gmail.com
Zoe Sollenberger, (703) 447-8636, zoe4dogs@shentel.net
Massanutten Trail 408 ~ Bear Trap Trail to Rte 675 (2.2mi)
Duncan Knob Trail 409A ~ Gap Creek Trail to Duncan Knob (2.7mi)
Milford Gap Trail ~ Tolliver Trail to Hazard Mill Campground Road (1.81mi)
Bear Wallow Spur Trail ~ Mud Hole Gap to Tuscarora Trail (2.4mi)
Mud Hole Gap Trail ~ Parking off SR678 [800] to Parking off Massanutten Trail (FR66) (4.28mi)
Shawl Gap Trail ~ SR613 [700] to MM/TT intersection at Shawl Gap (2.3mi)
Sherman Gap Trail ~ Mudhole Gap Trail to SR613 [580](5.79mi)
Sidewinder Trail ~ Mudhole Gap Trail to Tuscarora Trail (.83mi)
7-bar None Trail ~ Peters Mill Run Trail to Massanutten Trail (.46mi)
Bear Trap Trail ~ Peters Mill Run Trail to Massanutten Trail (.48mi)

Lupton Trail ~ Massanutten Trail to Peters Mill Run Trail (.43mi)

Indian Grave Ridge Trail ~ Parking lot off SR717 to Massanutten Trail (2.44mi)

Kennedy Peak Trail ~ Massanutten Trail to Tower Lookout (.24mi)

Tolliver Trail ~ logging road to Milford Gap Trail (1.79mi)

Massanutten South ~ Map H

Paul Boisen, (540) 246-5662, paulboisen@hotmail.com

Massanutten South Trail ~ Pitt Spring to Morgan Run Trail (1.4 m FR 65) (3.3mi)

Roaring Run Trail ~ Catherine Furnace to TV Tower Road (3.8mi)

Pitt Spring Lookout Trail ~ Massanutten South Trail to lookout point (.27mi)

Great North Mountain ~ Map F

Mike Allen ~ 540-333-3994, michaelallen0056@gmail.com

North Mt. Trail ~ Stack Rock Trail to VA 720 (4.3mi)

Stack Rock Trail ~ Forest Rd 252 to North Mt. Trail (1.5mi)

Long Mountain Trail ~ Trout Pond Trail to FR 1621 (4.4mi)

Big Schloss Trail ~ 2.3 Mile Marker of Mill Mt. Trail to Big Schloss View (.3mi)

Mill Mt. Trail ~ Wolf Gap to Big Schloss Cutoff Trail (2.8mi)

Gerhard Shelter Trail ~ Tuscarora Trail to Vances Cove (1.5mi)

Bucktail Cutoff Trail ~ Bucktail Trail to Halfmoon Trail (2.7mi)

Bucktail Trail ~ Trout Run Road to Waites Run Road (5.2mi)

Capon Trail ~ Bucktail trailhead to Waites Run Road (2.9mi)

German Wilson Trail ~ Halfmoon Lookout Trail to Bucktail Trail (1.2mi)

Cedar Creek Trail ~ FR88 to FR1863 (4.4mi)

Old Mailpath Trail ~ Wilson Cove to TT Three Ponds Trail (2.3mi)

Sulphur Springs Gap Trail ~ SR603 to TT Little North Mountain Trail (2.9mi)

Little Sluice Mountain Trail ~ FR92 to TT Three Ponds Trail (5.3mi)

Trout Pond Trail ~ SR59 to Long Mountain Trail (2.5mi)

Falls Ridge Trail ~FR1318 Laurel Run Spur Trail to North Mountain Trail (2.5mi)

North River Map-National Geographic Trails Illustrated #791

Lynn & Malcolm Cameron, (540) 234-6273, slynnccameron@gmail.com

Braley Pond Loop ~ 491, 496, 654 from Braley Pond Parking to Braley Pond Parking (3.6 mi)

MD Montgomery County Parks ~ Map D

Lynn Gallagher ~ (301) 320-4862, or lynn.t.gallagher@gmail.com

Cabin John Trail ~ Seven Locks Rd to Tuckerman Lane

Prince William Forest Park

Dennis Calhoun, 703-583-4386, dennis_calhoun@comcast.net

Carl Nicholson, 703-314-6365, cwnicholson@gmail.com

South Valley from Scenic Drive [3rd Intersection] to North Orenda Road (1.1 mi)

Maryland National Battlefield Parks – Antietam & Monocacy

Mary Ann Lepore ~ H 814-942-0670, C 814-327-8526

shastalepore@msn.com

Monocacy NBP

Junction Trail (1.mi) plus Best Farm Trail (1.5mi)[one maintainer for both trails]

MD Piedmont District - Monocacy Natural Resources Mgt. Area and

Seneca Creek Greenway

Jim Tomlin, (301) 774-1228, jftomlin@gmail.com

Jeffrey Clyman, (443) 864-4547, jiclyman@verizon.net

Seneca Creek Greenway Trail ~ River Road to lower Berryville Road (1.5 mi)

Seneca Creek Greenway Trail ~ lower Berryville Road to upper Berryville Road (2.1 mi)

Seneca Creek Greenway Trail ~ upper Berryville Road to Route 28 (1.9mi)

Seneca Creek Greenway Trail ~ Route 28 to Black Rock Road (1.2mi)

Seneca Creek Greenway Trail ~ Black Rock Road to Route 118 (1.5mi)

Seneca Creek Greenway Trail ~ Route 118 to powerline (1.4mi)

Seneca Creek Greenway Trail ~ powerline to Riffle Ford Road (1.5mi)

Seneca Creek Greenway Trail ~ Riffle Ford Road to Seneca Creek Road (1.6mi)

Seneca Creek Greenway Trail ~ Seneca Creek Road to Visitor Center (1.10mi)

Seneca Creek Greenway Trail ~ Visitor Center to Route 335 (2.3 mi)