

# ADVENT



**Scripture:** The true light, which enlightens everyone, was coming into the world. He was in the world, and the world came to be through him, but the world did not know him. He came to what was his own, but his own people did not accept him. But to those who did accept him, he gave power to become children of God (John 1:9-12A)

**Pray Together:** In the name of the Father, and of the Son, and of the Holy Spirit. Amen

Dear Sacred Heart of Jesus, I love You so much and I give You my heart. Help me to love God. Help me to love my neighbor as a child of God. Help me to love myself as a child of God. AMEN

## Videos

[The Magnificat: A Virgin Hymn](#)

[Mary Did You Know?](#)

[Advent in Two Minutes](#)

[Advent for Kids](#)

[My Time With Jesus: Advent](#)

## Worship Music

[Go Tell it on the Mountain: music with motions](#)

[Mary Did You Know?](#)

## Coloring Pages

Advent Wreath: Page 3

Good Deed Advent Calendar: Page 4

Door Knob Advent Sign: Page 5

## Optional Activities

[Advent Wreath Ideas](#)

[Advent Activities](#)

[Good Deed Chains](#)

[Advent Wreath Blessings and Prayers](#)

## Family Service Projects

**Pray a Novena with Maximillian Kolbe for those who are imprisoned.** Simply pray One Our Father, Three Hail Mary's and One Glory Be for nine consecutive days.

**Prison Ministry:** write letters or send Christmas cards to prisoners in the Plymouth House of Correction.

**Make Christmas Cards for the elderly shut-ins.** Drop off cards at the senior center to be delivered with meals on wheels.

[Reverse Advent Calendar](#)

**Mary Candle:** see page 6

## Did You Know?

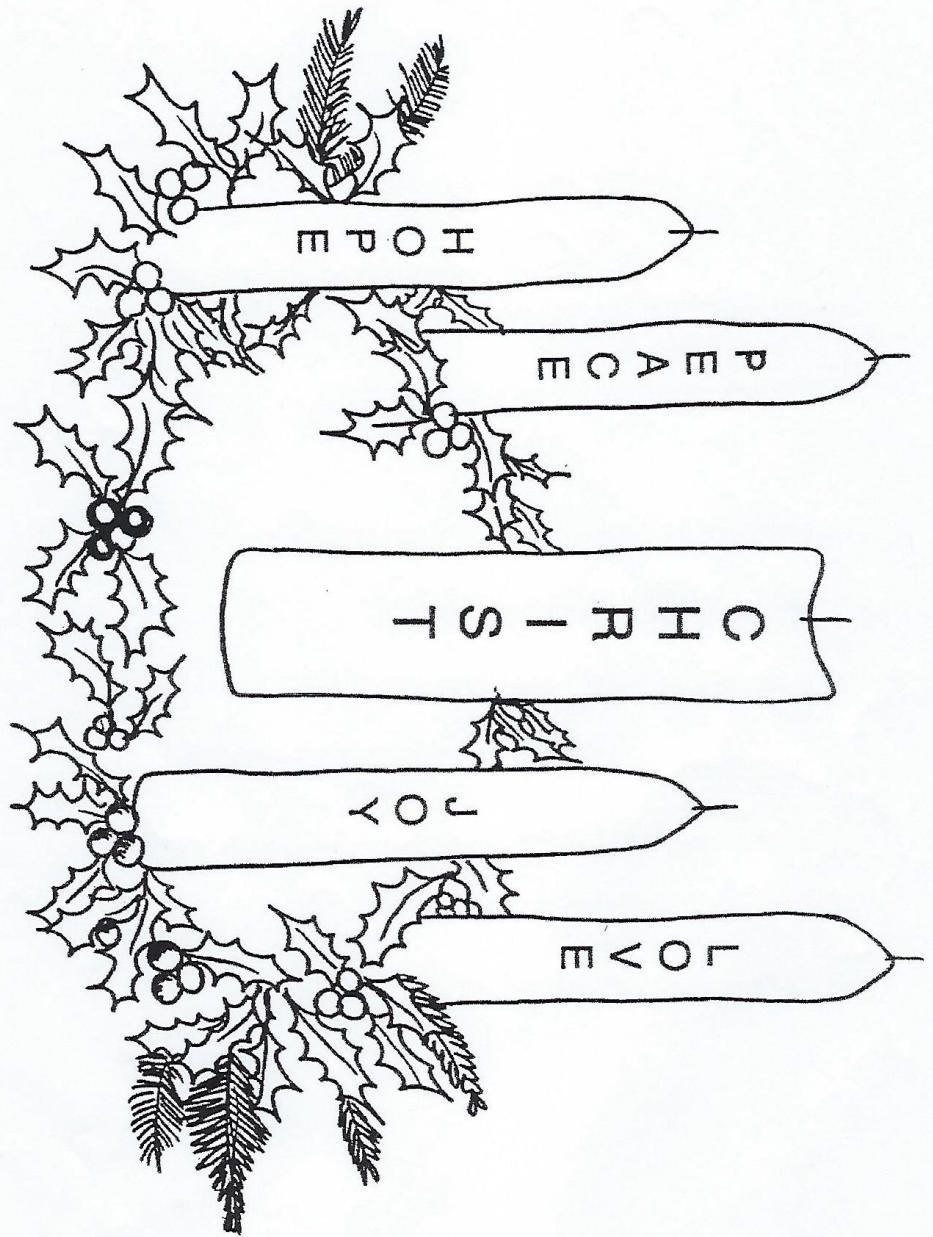
Did you know that the last Sunday in November marks the new year of the liturgical/church year. ADVENT IS THE FIRST SEASON of the liturgical year. It is a time of waiting for the birth of the Messiah.

## Saints We Honor

[Saint Nicholas](#)

[Our Lady of Guadalupe](#)

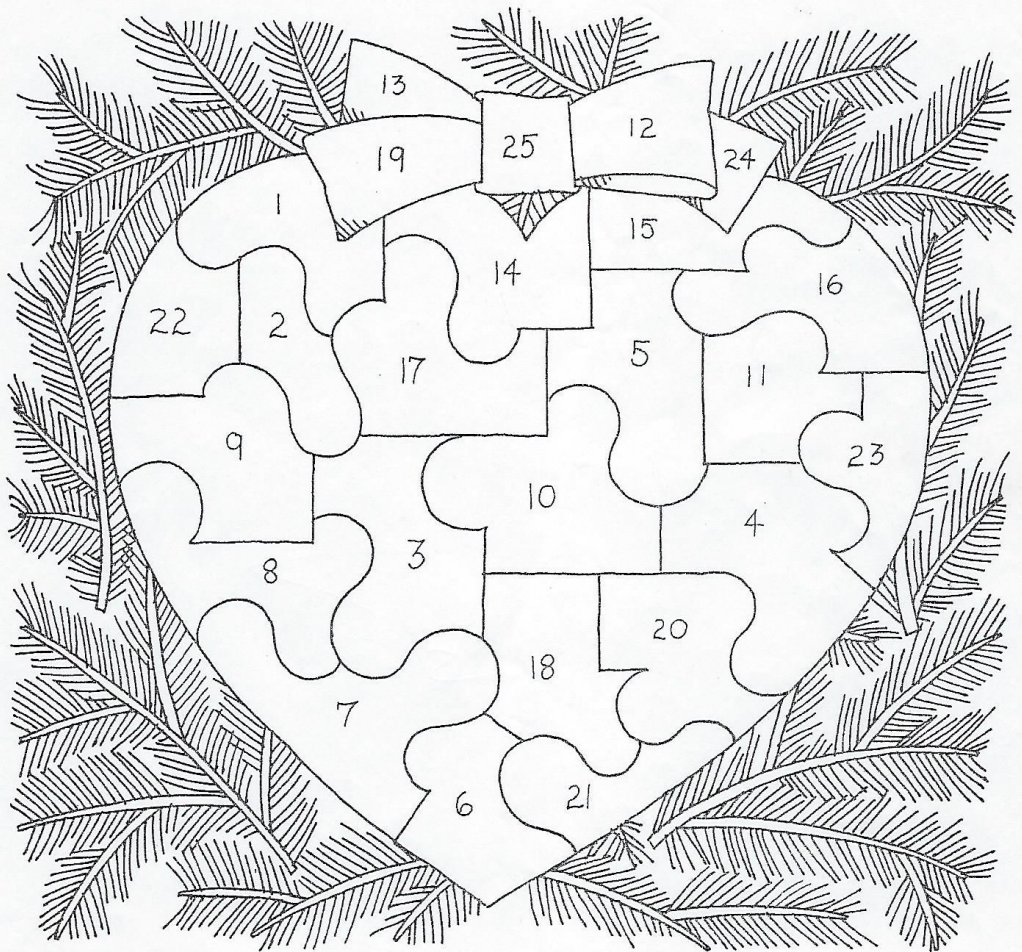
[Saint Lucy](#)



\_\_\_\_\_  
Name \_\_\_\_\_

## Our Church Celebrates Advent

Use this Advent calendar to help you prepare for Jesus' coming. Each day that you do something kind for someone, color a space on the heart. At Christmas, your heart will be a gift for Jesus.

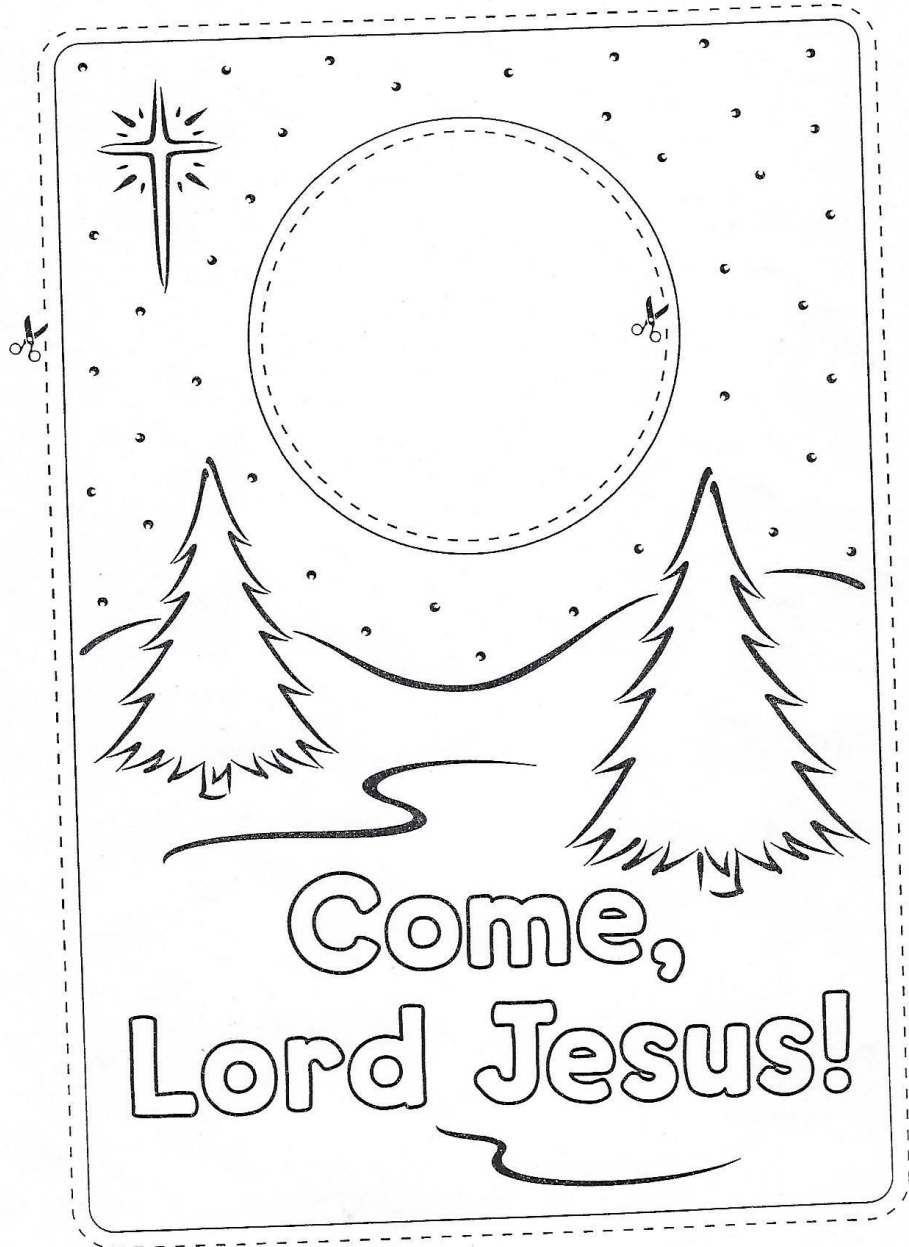


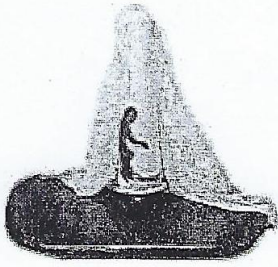
© Silver, Burdett & Ginn, Inc.



Name \_\_\_\_\_

Make this Advent sign to put on one of your doorknobs at home.





## Mary Candle I

Incorporate this Advent custom into your home in honor of the Blessed Virgin Mary.

### Directions

With such a glorious feast as this during the month of December, we are almost tempted to give up all hope of doing much penance during the season of Advent. On December 8 we celebrate the

wondrous moment when the Blessed Virgin began her existence in this world. At the same time we celebrate the sublime privilege by which Mary, alone among all human beings and in virtue of the future merits of Christ, was preserved at the very first moment of conception from the stain of original sin. It is true, of course, that in origin and in principle this great feast does not have any relationship with the time of Advent. It was fixed on December 8 in order to separate the feast by nine months from the date of the Nativity of the Blessed Virgin on September 8. However, in celebrating this feast we may easily enter into the spirit of Christmastide, for the feast is like the dawn of the Sun of Christmas. Mary is our hope, guide, and mother along the path of salvation.

The vigil of the Immaculate Conception is an opportune time to introduce the children to the practice of lighting a special Advent candle in Mary's honor. The Advent candle expresses symbolically the words of Isaias, "There shall come forth a rod out of the root of Jesse, and a flower shall rise up out of this root." A beautiful candle is placed in a candleholder, which is covered with a white silk cloth tied together with ribbon. The candle is then placed before an image, statue or ikon of our Lady before which the family prays to the Mother of God. This ancient custom preaches its lesson with an eloquent simplicity which is comprehensible to little children. The covered candleholder represents the rod out of the root of Jesse, Our Lady, from whose womb will come the Saviour of the world. The candle represents Christ, the Light of the World, who shall come to dispel all darkness and stain of sin. In conjunction with this little ceremony, one of the family could tell of the purity and childlike simplicity of our Blessed Mother, and of how she came to be the mother of us all.

Activity Source: *True Christmas Spirit* by Rev. Edward J. Sutfin, Grail Publications, St. Meinrad, Indiana, 1955