



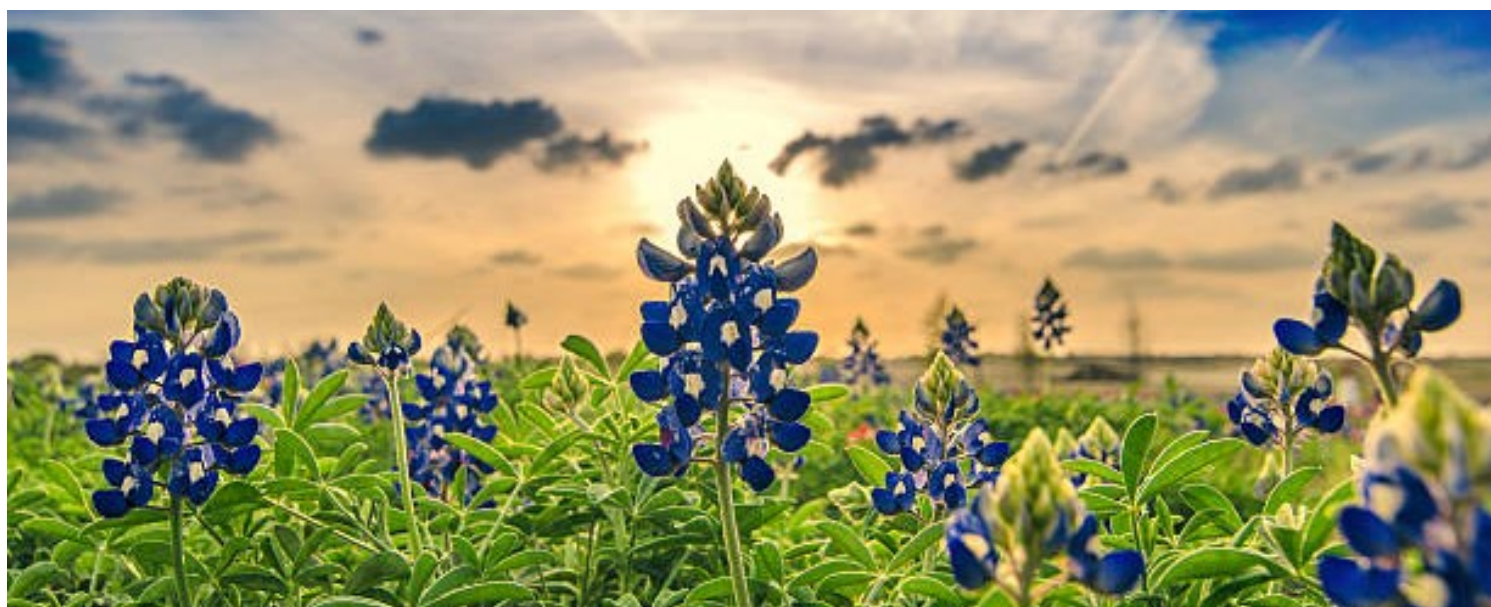
# FRY-SMITH

FUNERAL HOME - CREMATION SERVICE

502 Kent Ave.

Tuscola, TX 79562

(325) 554-7404



## General Price List

**\$500 DISCOUNT FOR CASH OR CHECK PAYMENTS**  
(discount applies to packages or general service fee)

Effective Date of Price List: October 2, 2024  
Prices are subject to change without notice.

# Traditional Burial Services

*Disclaimer: The package prices below do not include casket or other cash advance items such as death certificates, cemetery services for opening & closing of grave, and other merchandise or upgrades the family chooses to make.*

## **Traditional Church or Chapel Service - \$5,985** with cash/check payment discount \$5,485

- professional services of funeral director and staff to help you and your family
- first call: transfer of deceased from location to funeral home (within 30 miles)
- the arrangement meeting to plan the funeral service and disposition of deceased
- preparing and filing of authorizations, permits, and other legal documents
- embalming, bathing, and other sanitary care of deceased
- dressing, casketing, and cosmetology of deceased
- use of our facilities and staff for visitation (with or without a viewing)
- use of our facilities for funeral/memorial service or use of our staff and equipment for a service at a location of your choice
- funeral coach, clergy car, and utility/flower car within a 30 mile radius
- coordinating with third party vendors (such as florists, cemetery, newspaper)
- delivery and set-up of flowers at service location
- publishing visitation and service information on our website in addition to a photo and the obituary
- basic stationary package that includes: memorial book, 100 small printed programs for the service (or 50 large printed programs), tribute video, and thank you cards for the family

## **Traditional Graveside Service - \$5,885** with cash/check payment discount \$5,385

- professional services of funeral director and staff to help you and your family
- first call: transfer of deceased from location to funeral home (within 30 miles)
- the arrangement meeting to plan the funeral service and disposition of deceased
- preparing and filing of authorizations, permits, and other legal documents
- embalming, bathing, and other sanitary care of deceased
- dressing, casketing, and cosmetology of deceased
- use of our facilities and staff for visitation (with or without a viewing)
- use of our staff and equipment at cemetery for the graveside service
- funeral coach and utility/flower car within a 30 mile radius
- coordinating with third party vendors (such as florists, cemetery, newspaper)
- delivery and set-up of flowers at graveside
- publishing visitation and service information on our website in addition to a photo and the obituary
- basic stationary package that includes: memorial book, 100 small printed programs for the service (or 50 large printed programs), tribute video, and thank you cards for the family

## Traditional Burial Services continued...

*Disclaimer: The package prices below do not include casket or other cash advance items such as death certificates, cemetery services for opening & closing of grave, and other merchandise or upgrades the family chooses to make.*

### **Immediate Burials - \$3,745**

**with cash/check payment discount \$3,245**

- professional services of funeral director and staff to help you and your family
- preparing and filing of authorizations, permits, and other legal documents
- first call: transfer of deceased from location to funeral home (within 30 miles)
- three day cold preservation
- transportation to cemetery (within a 30 miles)

\* This price does not include the purchase of a casket. \*



## Cremation Services

### **Traditional Funeral Service (followed by cremation) - \$6,924**

**with cash/check payment discount \$6,424**

- professional services of funeral director and staff to help you and your family
- first call: transfer of deceased from location to the funeral home (within 30 miles)
- the arrangement meeting to plan the funeral and disposition
- preparing and filing of authorizations, permits, and other legal documents
- embalming, bathing, and other sanitary care of deceased
- dressing, casketing, and cosmetology of deceased
- use of casket for viewing/visitation/service (Noblex pine flat top or Brockton dome top)
- use of our facilities and staff for visitation (with or without a viewing)
- use of our facilities for service or staff and equipment for a service at a location of your choice
- funeral coach, clergy car, and utility/flower car (within 30 miles)
- coordinating with third party vendors (such as florists, cemetery, crematory)
- delivery and set-up of flowers at service location
- publishing visitation and service information on our website in addition to a photo and the obituary
- basic stationary package that includes: memorial book, up to 100 printed programs for the service, tribute video and thank you cards for the family

# *Time to Honor (after cremation)*

## **1. Visitation & Funeral Service (after cremation) - \$4,865**

**with cash/check payment discount \$4,365**

- professional services of funeral director and staff to help you and your family
- first call: transfer of deceased from location to the funeral home and crematory (within 30 miles)
- the arrangement meeting to plan the funeral and disposition
- preparing and filing of cremation authorizations, permits, and other legal documents
- use of our facilities and staff for visitation
- use of our facilities for service or staff and equipment for a service at a location of your choice
- funeral coach, clergy car, and one utility/flower car (within 30 miles)
- coordinating with third party vendors (such as florists, cemetery, crematory)
- delivery and set-up of flowers at service location
- publishing visitation and service information on our website in addition to a photo and the obituary
- basic stationary package that includes: memorial book, 100 printed programs for the service, tribute video and thank you cards for the family
- the required fiberboard cremation container is included

## **2. Funeral Service (after cremation) - \$4,490**

**with cash/check payment discount \$3,990**

- professional services of funeral director and staff to help you and your family
- first call: transfer of deceased from location to the funeral home and crematory (within 30 miles)
- the arrangement meeting to plan the funeral and disposition of deceased
- preparing and filing of cremation authorizations, permits, and other legal documents
- use of our facilities for service or staff and equipment for a service at a location of your choice
- funeral coach, clergy car, and one utility/flower car (within 30 miles)
- coordinating with third party vendors (such as flowers, cemetery, crematory)
- publishing visitation and service information on our website in addition to a photo and the obituary
- basic stationary package that includes: memorial book, up to 100 printed programs for the service, tribute video, and thank you cards for the family
- the required fiberboard cremation container is included

## **3. Visitation at Fry-Smith (after cremation) - \$4,045**

**with cash/check payment discount \$3,545**

- professional services of funeral director and staff to help your family make arrangements
- first call: transfer deceased from location to the funeral home and crematory (within 30 miles)
- preparing and filing of cremation authorizations, permits, and other legal documents
- use of our facilities and staff for visitation
- coordinating with third party vendors (such as florists, cemetery, crematory)
- publishing visitation and service information on our website in addition to a photo and the obituary
- basic stationary package that includes: memorial book, tribute video and thank you cards for the family
- the required fiberboard cremation container is included



## Basic Cremation

**Basic Cremation (direct) - \$2,895**

**with cash/check payment discount \$2,395**

- professional services of funeral director and staff to help your family plan the disposition
- first call: transfer of deceased from location to the funeral home and crematory (within 30 miles)
- preparing and filing of cremation authorizations, permits, and other legal documents
- the required fiberboard cremation container is included
- (there is an additional fee for cremations over 300 pounds)

Disclaimer: This package price does not include the cost of a casket (if that is what the family chooses for the cremation container), or other cash advance items such as death certificates, or extended time in cold preservation. Stationary packages and placement of the obituary in the paper or on the website are not included.



## Honoring our Veterans

We greatly appreciate those who have served in the United States Armed Forces. As a veteran, you are eligible for certain services/products. To receive any or all of the following, you must have a copy of your DD214 and be an active member of the military or have been honorably discharged.

- You are eligible to receive an American flag for your service.
- You are eligible to receive a government issued upright monument or flat marker for your service.
- You can choose to be buried in a National or Texas State Veterans Cemetery at no cost. (Saves \$1,500+)
- If you choose to be buried in a National or Texas State Veterans Cemetery, you receive a grave liner at no cost. (Saves \$900+)
- With a valid marriage certificate, your spouse can also be buried in a National or Texas State Veterans Cemetery with you and receive a grave liner at no cost as well.



Here at Fry-Smith Funeral Home, we say thank you by giving you a Basic Stationary Package for free. This includes the register book of your choice, printed pages, printed programs for the service, thank you cards, and a tribute video. (Saves \$250)

## Cash Advance Items

Cash advance items are goods & services that the funeral home purchases on your behalf. Fry-Smith Funeral Home does NOT set these prices or add an addition markup to them. What they cost us, is what they cost you. Some great examples of this would be death certificates, obituaries in the newspaper, cemetery fees, opening and closing of the grave, and floral arrangements.

### Examples of Common Cash Advance Items:

- Certified Death Certificates from the State of Texas cost \$21 for the first and \$4 for each additional.
- Opening & Closing of grave - starts at \$1,100 (more for a Saturday/Sunday service or on holidays)
- Death Notice in paper (includes name, age, town, and service information) - starts at \$39
- Obituary costs vary depending on the newspaper and length of obituary - usually starts at \$300
- Cemetery fees - depending on the cemetery chosen, there may be an additional cost.
- Engraving of final death date into an existing headstone - usually starts at \$250
- Church Building rental/cleaning fee - \$250
- Sheriff/Police escort for funeral procession - \$250
- Florist for casket spray or standing spray - usually starts at \$250
- Honorarium to clergy for performing the funeral service - \$200
- Honorarium to musician for performing at funeral/graveside service - \$200
- Payment for outside vendor to do hair/make-up - usually starts at \$50
- Postage/Shipping (to get a tracking number on Death Certificates) - \$19.50
- VA Monument Setting Fee (when burying somewhere other than Veterans Cemetery) - \$125

---

Keep in mind, families are welcome to purchase some of these things on their own, but we are happy to take that task/stress off your plate during this difficult time.

# General Price List - Itemized

These prices are effective October 2, 2024 but are subject to change without notice. The goods and services shown below are those we provide to our customers. You may choose only those items you desire. (However, any funeral arrangements you select will include a charge for our basic service fee.) If legal or other requirements require you to buy any item you did not specifically ask for, we will explain the reason in writing on the statement we provide describing the funeral goods and services you selected.

## **Services of Funeral Director and Staff** **\$3,095**

Our professional service fee includes, but is not limited to, staff to respond to initial request for service, arrangement consultation, the arrangement of the funeral, disposition, preparation and filing of authorizations and permits, recording vital statistics for the death certificate, preparation and placement of obituary notices, coordination with third party providers (florists, cemetery, crematory, insurance companies...) and overhead. This fee will be added to the total cost of the funeral arrangements you select, but is already included in the charges for direct cremations, immediate burials, and forwarding and receiving of remains.

## **Embalming** **\$795**

Embalming is not required by law. Embalming may be necessary, however, if you select certain funeral arrangements, such as a funeral with visitation. If you do not want embalming, you have the right to choose an arrangement which does not require you to pay for it, such as a closed casket visitation and burial, direct cremation, or immediate burial.

## **Formaldehyde Free Embalming** **\$1,495**

### **Additional Preparation of Body**

|   |       |
|---|-------|
| Dressing, casketing, and cosmetology                          | \$325 |
| Bathing, washing, & other sanitary care of unembalmed remains | \$250 |
| Special care of autopsied remains (per hour)                  | \$225 |
| Special care of organ, tissue, or bone donor (per hour)       | \$225 |
| Reconstruction/restoration (per hour)                         | \$400 |
| Cold preservation (per day)                                   | \$85  |
| Oversized remains (+300lbs) handling fee                      | \$200 |

## Use of Facilities and Equipment

This includes coordinating and supervising the visitation, funeral service or graveside service, display of floral arrangements, placement of casket or urn, staff, and equipment.

|   |       |
|---|-------|
| Visitation - 2 hours (with or without a viewing)                                  | \$375 |
| Visitation - 1 hour prior to service (with or without a viewing)                  | \$200 |
| Visitation/Rosary - 2 hours (with or without a viewing)                           | \$475 |
| Additional days for visitation (per day)  | \$150 |
| Church/Chapel/Memorial Service (at Fry-Smith or a location of your choice)        | \$495 |
| Graveside Service   | \$395 |
| Private Room for family viewing of unembalmed remains for 1 hour (limit 5 people) | \$395 |

## Transportation and Automotive Equipment

Transportation within a 30 mile radius of Tuscola is included. Additional milage will be \$2.95 per loaded mile.

|  |       |
|--|-------|
| Transfer of deceased to funeral home (first call)                    | \$325 |
| Funeral Coach (hearse)   | \$325 |
| Service/Flower Vehicle   | N/C   |
| Service/Flower Vehicle (for each additional vehicle after the first) | \$125 |
| Pallbearer/Family Limousine  | \$525 |
| Transportation to and from the airport                               | \$495 |
| (Airports: Midland/Odessa, Lubbock, DFW, Austin, San Antonio)        |       |

## Special Professional Services

Prices include the necessary services of staff, recieving and removal of deceased (within a 30 mile radius), forwarding/receiving deceased, temporary 3 day shelter, and authorizations and paperwork. (This does not include rites, ceremonies, or visitations.)

|   |         |
|---|---------|
| We ship remains with minimum shipping container (air tray)                      | \$4,215 |
| * This price does not include the actual airfare/transportation costs. *        |         |
| With a casket selected from the funeral home                                    | \$4,215 |
| * This price does not include the actual shipping costs or price of a casket. * |         |
| Air tray  | \$725   |
| Receiving of deceased's remains   | \$3,095 |
| Shipping cremains (USPS in temporary urn only)                                  | \$125   |
| Receiving cremains  | N/C     |
| Travel Insurance (for Pre-Arrangements only)                                    | \$525   |
| Hospitality Services  | \$200   |

Fry-Smith is happy to host families that wish to have a catered lunch or dinner. This price includes setup/cleanup, tables, chairs, and linens. The cost of the catered meal is not included.



## Additional Merchandise and Services

### Stationary Packages

|   |                   |
|---|-------------------|
| Basic Stationary Package includes:                    | starting at \$250 |
| Memorial/Register Book (tier 1)                       |                   |
| Memorial Programs for Service (100 small or 50 large) |                   |
| Acknowledgement/Thank You Cards (box of 25)           |                   |
| Floral Arrangement Picture pages for Memorial Book    |                   |
| Temporary Grave Marker                                |                   |
| Tribute Video (on USB drive)                          |                   |
| Online Memorial Tribute                               |                   |
| Prayer Cards (if needed)                              |                   |

### Additional Items

|   |                  |
|---|------------------|
| Additional Tribute Video                          | \$45             |
| Crucifix  | starting at \$35 |
| Prayer Cards (per 50)                             | \$25             |
| Memorial Programs: (50 additional small programs) | \$15             |
| (50 additional large programs)                    | \$30             |
| Additional Register Book                          | starting at \$80 |
| Acknowledgement Cards (box of 25)                 | \$10             |
| Framed Portrait 16x20                             | \$250            |
| Additional Temporary Grave Marker                 | \$125            |

# Caskets

The Federal Trade Commission and the Texas Funeral Service Commission grants funeral consumers certain rights. One of those rights is that caskets do not have to be purchased through the funeral home.

You can purchase them elsewhere or build one yourself. Should you choose to purchase a casket from us, know that all of Fry-Smith's caskets are priced \$500 over our cost (plus tax).



**Sapphire**  
Silver Velvet



**Tuscany Rose**  
Silver Velvet



**Star Quartz**  
Champagne Velvet



**Golden Onyx**  
Champagne Velvet

**Vega**  
\$2,232

18 gauge steel



**Silver**  
Ivory Crepe



**Blue**  
Light Blue Crepe



**White/Pink**  
Moss Pink Crepe

**Virgo**  
\$2,208

18 gauge steel



**Copper**  
Rosetan Crepe



**White**  
Ivory Crepe



**Ruby Rose**  
Ivory Velvet

**Aquarius**  
\$2,006

20 gauge steel



**Ocean Blue**  
Light Blue Velvet



**Desert Sand**  
Champagne Velvet



**Floral Gold**  
Ivory Velvet



**Sand**  
Rosetan Crepe

**Argo**  
\$2,061

20 gauge steel gasketed



**Orchid**  
Moss Pink Crepe



**Black**  
Ivory Crepe



**Silver**  
Ivory Crepe



**Silver**  
Ivory Crepe

**Aries**  
\$2,061

20 gauge steel gasketed



**Copper**  
Rosetan Crepe



**White**  
Ivory Crepe



**Blue**  
Light Blue Crepe



**Orchid**  
Moss Pink Crepe

## Pisces

\$1,897

20 gauge steel gasketed



**Silver**  
Silver Crepe



**Sand**  
Rosetan Crepe



**Black**  
Silver Crepe

## Spectra

\$1,691

20 gauge steel non-gasketed



**White**  
Ivory Crepe



**Orchid**  
Moss Pink Crepe



**Blue**  
Light Blue Crepe



**Silver**  
Ivory Crepe



**Silver**  
White Crepe

## Gemini

\$1,528

20 gauge steel non-gasketed



**White**  
Ivory Crepe



**White/Pink**  
Moss Pink Crepe



**Blue**  
Light Blue Crepe



**Copper**  
Rosetan Crepe





**Copper**  
Rosetan Crepe

**Apollo**  
**\$1,323**

20 gauge steel non-gasketed



**Silver**  
White Crepe



**Flat Black**  
Rosetan Crepe



**White**  
Moss Pink Crepe



**Blue**  
Light Blue Crepe

## *Oversized Caskets*



**Black**  
Ivory Crepe

**Hercules 28"**  
**\$2,558**

20 gauge steel



**Orchid**  
Moss Pink Crepe



**Blue**  
Ivory Crepe



**Silver**  
Ivory Crepe



**White**  
Ivory Crepe

**Doe Skin**  
**\$1,747**

**Cloth Covered Fiberboard**  
Ivory Crepe - Oversized





# Wood Caskets



**Brockton**  
\$4,411

**Oak Solid**  
Rosetan Crepe



**Solstice**  
\$2,430

**Cedar Solids & Veneers**  
Oatmeal Duck Cloth

## Noblex Casket Company Flat Top Caskets

Hand made in Albany, Texas

featured on



**Pine**  
\$1,898



Craftsman- Jim Nobles

Mesquite & Cedar Caskets  
available in limited quantities.



**Aron**  
\$1,684

**Pine Box** (Sabbath observed)  
No metal, protien free glue, excelsior bed



**TrayView**  
\$820

This is our least expensive casket.

# Wood Veneer Caskets



**Harvest Red**  
Rosetan Crepe



**Harvest Brown**  
Rosetan Crepe



**Light Brown**  
Rosetan Crepe

**Libra**  
**\$2,201**



**Light Brown**  
Rosetan Crepe



**Brown**  
Rosetan Crepe

**Lynx**  
**\$1,960**



**Natural**  
Rosetan Crepe



**Brown**  
Rosetan Crepe

**Lyra**  
**\$1,667**

Flat Top

## Urn

Fry-Smith offers a variety of wood, metal, and marble urns coming in many different shapes and sizes. Specialty urns range in price from \$100 - \$5,000. We are happy to help you find the urn that suits your loved one best. Since inventory changes happen often, we are not listing individual pictures. Temporary urns are complimentary and come at no charge to you.

## Outer Burial Containers

State or local law does not require the purchase of a container to surround the casket in the grave. However, many cemeteries require an outer burial container to help control settling of soil. Either a concrete/steel grave liner or polypropylene/burial vault will satisfy these requirements. The cemetery you choose will determine whether or not this purchase will be mandatory.

## Grave Liners

Grave liners ONLY keep the weight of the earth off the casket. They do not protect the casket from the elements such as water, mud, or roots.



Concrete Box  
\$885



Oversized  
Steel Liner  
\$1,085

# Vaults

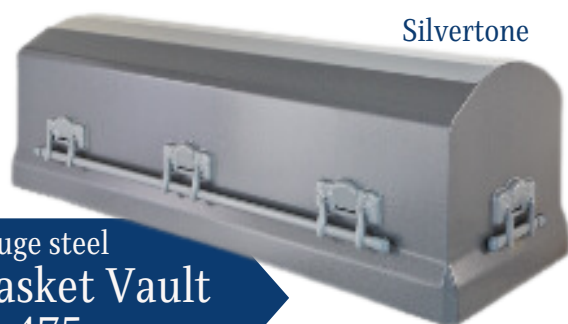
Vaults line the grave, keep the weight of the earth off the casket, AND provide protection from the elements such as water, mud, and roots.



Polypropylene  
**Vantage Casket Vault**  
\$1,135



Polypropylene  
**Vantage Urn Vault**  
\$525



12 gauge steel  
**Wise Casket Vault**  
\$1,475



Bronze



12 gauge steel  
**Wise Oversized Vault**  
\$2,350



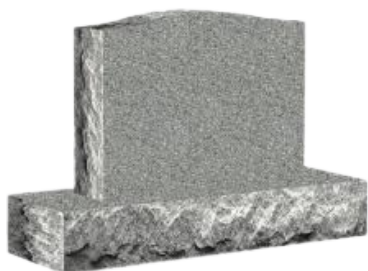
10 gauge steel  
**Clark Galvanized Vault**  
\$3,645

Due to the supplier closing, Fry-Smith Funeral Home is not currently offering concrete vaults.

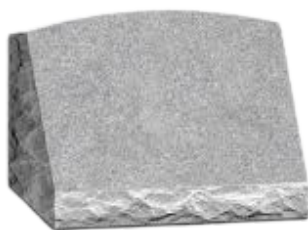


## Monuments

Here at Fry-Smith, we are happy to help you customize a monument for your loved one. Prices on monuments vary greatly due to the different size and granite options available. We will help walk you through the process of creating something that not only honors your loved one but also fits within your family budget.



Upright Monument



Slant Monument



Bevel Monument



Flat Monument

---

## Copyright & Disclosure

The Fry-Smith Funeral Home General Price List was copyrighted effective October 2, 2024.

This price list cannot be reproduced or represented by anyone outside the employment of Fry-Smith Funeral Home. Third party companies do not have permission to represent this funeral home or our price list.