

# Central Hydraulics Inc.

**EATON**  
Aeroquip



Specializing in sales and repairs  
of hydraulic hose, pumps, motors,  
cylinders, valves, & components

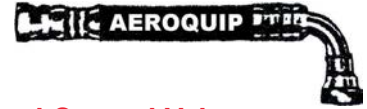


## MANUFACTURERS

**AEROQUIP**  
**APSCO INC**  
**ALEMITE**  
**BAND-IT**  
**BOSTON**  
**BRAND HYDRAULICS**  
**BUCHER**  
**BVA HYDRAULICS**  
**CROSS MFG**  
**CURTIS TOLEDO**  
**DAMAN**  
**DELTROL**  
**DIXON**  
**DK-LOK**  
**DONALDSON**  
**DYNAMIC**  
**HYBEL**  
**VACUFORCE**  
**FILL-RITE**  
**FOSTER**  
**GRACO**  
**HANNAY**  
**HEDLAND & FLO-TECH**  
**HOSTRACT REELS**  
**HUSKY**  
**HYDRA-MOUNT**  
**HYDRAULICS INC**  
**HYVAIR**  
**KURIYAMA - PIRANHA**  
**MILTON INDUSTRIES**  
**NYCOIL - RECTUS - TEMA**  
**PERMCO**  
**SPX STONE**  
**STUCCHI**  
**SUPER SWIVELS**  
**SUTTNER**  
**WHITE DRIVE PRODUCTS**  
**YUKEN**  
**ZERO-MAX/ HELLAND**  
**HYFLOW CONTROLS**  
**HEAVY MOTION**

## PRODUCTS OFFERED

**Hose, Fittings, Adapters, Flexmaster Joints**  
**Pneumatic Valves - Electric and Manual**  
**Lube Equipment & Fluid Handling Products**  
**Punch Type Clamps & Tools**  
**Air, Water, Fuel, Chemical Hose**  
**Valves, Stackable, Mono Block**  
**Monoblock & Sectional Directional Control Valves**  
**High Pressure Pumps & Rams to 10k psi**  
**Cylinders, Valves, Gear Pumps & Motors**  
**Air Compressors**  
**Hydraulic Valve Manifolds**  
**Needle, Flow Control, Check & Cartridge Valves**  
**Valves, Couplings, Camlocks**  
**Instrumentation Fittings & Valves**  
**Hydraulic Filters & Components**  
**Pressure Gages, High Pressure Ball Valves**  
**Gear Pumps & Gear Motors**  
**Filters Regulators & Lubricators**  
**Fuel Transfer Pumps & Meters**  
**Water & Air Disconnects**  
**Bulk Fluid and Grease Dispensing Air Pumps**  
**Best Quality Hose Reels for Industry**  
**Testers & Flow Meters for Liquid, Air & Compressed Gases**  
**Economical Hose Reels**  
**Fuel Nozzles & Accessories**  
**Pump/Motor Mounting Brackets**  
**Full Time Hydraulic 3000psi Live Swivels**  
**NFPA Valves and Accessories**  
**Sewer Cleaning Hose**  
**Air Accessories & Fittings**  
**European Quick-Connect Couplings**  
**Gear Pump, Motors, & Dump Pumps**  
**AC/DC Hydraulic Power Units**  
**Hydraulic Quick-Disconnect Couplers**  
**Live Swivels Oil, Water & Air up to 5000psi**  
**Pressure Washer Accessories**  
**LSHT Motors and Brakes**  
**Solenoid Operated Directional Control Valves**  
**Overhung Load Adapters**  
**Replaces DVA-20 & DVA-35 Valves**  
**Gear Pumps & Parts**



Kuriyama of America, Inc.



**Central Hydraulics Inc.**

**386-253-2568**

1580 North Nova Road  
Daytona Beach, FL 32117

www.Cenhyd.com  
Tampa Ocala Leesburg Cocoa

# CENTRAL HYDRAULICS INC.

•Daytona Beach •Cocoa •Leesburg •Ocala •Tampa 1-800-264-9571

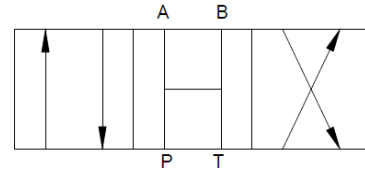
## 45GPM Directional Control Valve



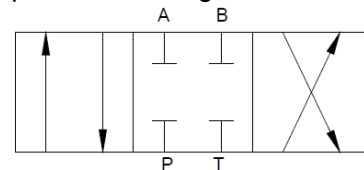
### Common "DCSERIES" Stock #'s

DC	75	T	3	L	B	S
DC	75	T	4	H	E	B
DC	16	O	4	L	B	D
DC	16	T	3	L	B	D
DC	16	T	3	L	B	S
DC	16	T	4	L	B	D
DC	16	T	4	L	B	S
	1	2	3	4	5	6

**45 gpm**  
**3000 psi**  
**#16 SAE ORB**  
**3/4" NPT**



**Open Center (O)** - All of the ports are connected to tank when the spool is in neutral. Allows cylinder to move or motor to rotate when spool is in neutral. This spool is not designed for DCF valve.



**Closed Center (C)** - All ports are blocked in neutral. Blocks cylinder or motor in neutral. Required for use with pressure compensated pump. This is not available for DCF valve.

### 1 **SERIES**

DC – 4-way directional control valve

### 2 **PORT SIZE**

75 – 3/4" inlet/outlet and work ports

16 – #16 SAE inlet/outlet and work ports

### 3 **SPOOL TYPE**

T3 – Tandem center 3-way (DC only)  
 (Omit 4)

C – Closed center (DC only)

T – Tandem center (DC only)

O – Open center (DC only)

M – Fine metering

TM – Tandem metering

### 4 **3-WAY or 4-WAY**

3 – 3-way (Tandem spool and DC only)

4 – 4-way

### 5 **ACTUATORS**

L – Lever handle (B port is active when handle is pushed)

H – Rotary handle (Used in conjunction

with rotary ball friction detent (E))

### 6 **SPOOL ATTACHMENTS**

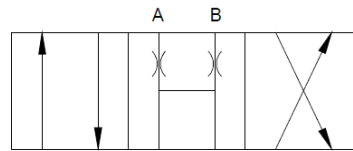
S – Spring center

D – Three-position detent

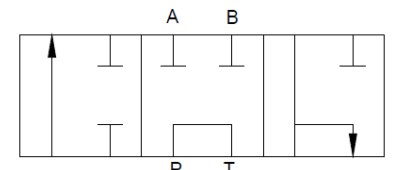
F1 – Ball friction detent

B – High lift ball spring relief for DC (TS-B)

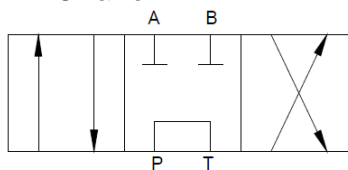
E – Rotary ball friction detent



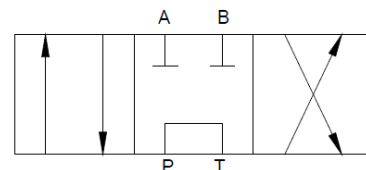
**Fine Metering Spool (M)** - The pressure drop in neutral is higher than the (TM) spool. Requires external locking valves to hold cylinder, because ports A and B are open (orificed) in the neutral position. Extremely fine metering control. This spool is designed for the DCF valve and acts as closed center in DC valve.



**Tandem Three Way (T3)** - Powers the cylinder in one direction. Pump unloads to tank when spool is in neutral, or when spool is being reversed. Cylinder is blocked when spool is in neutral. Port "B" is plugged. This spool is designed for the DC valve.



**Tandem Metering Spool (TM)** - Similar to (T) spool except much finer metering control. The pressure drop in neutral is lower than the (M) spool. Cylinder or motor blocked in neutral and pump unloads to tank. This spool is designed for DCF valve.



**Tandem Center (T)** - Powers cylinder or motor in both directions (metering capability is very limited). Pump unloads to tank when spool is in neutral. Cylinder or motor blocked when spool in neutral. This spool is not designed for DCF valve.

# Central Hydraulics Inc.

*Specializing in wholesale and OEM sales  
of hydraulic hose, pumps, motors,  
cylinders, valves, & components*

1580 North Nova Road  
Daytona Beach, FL 32117

Toll Free: **1-800-264-9571**

Telephone: **386-253-2568**

Fax: **386-257-5728**

[www.CenHyd.com](http://www.CenHyd.com)

[sales@cenhyd.com](mailto:sales@cenhyd.com)