



**LEADERSHIP
CONNECTIONS™**
Where Leaders Connect

2026 "Onward" National Conference for Early Childhood Leaders

Sponsorship Packages and Exhibitor Opportunities



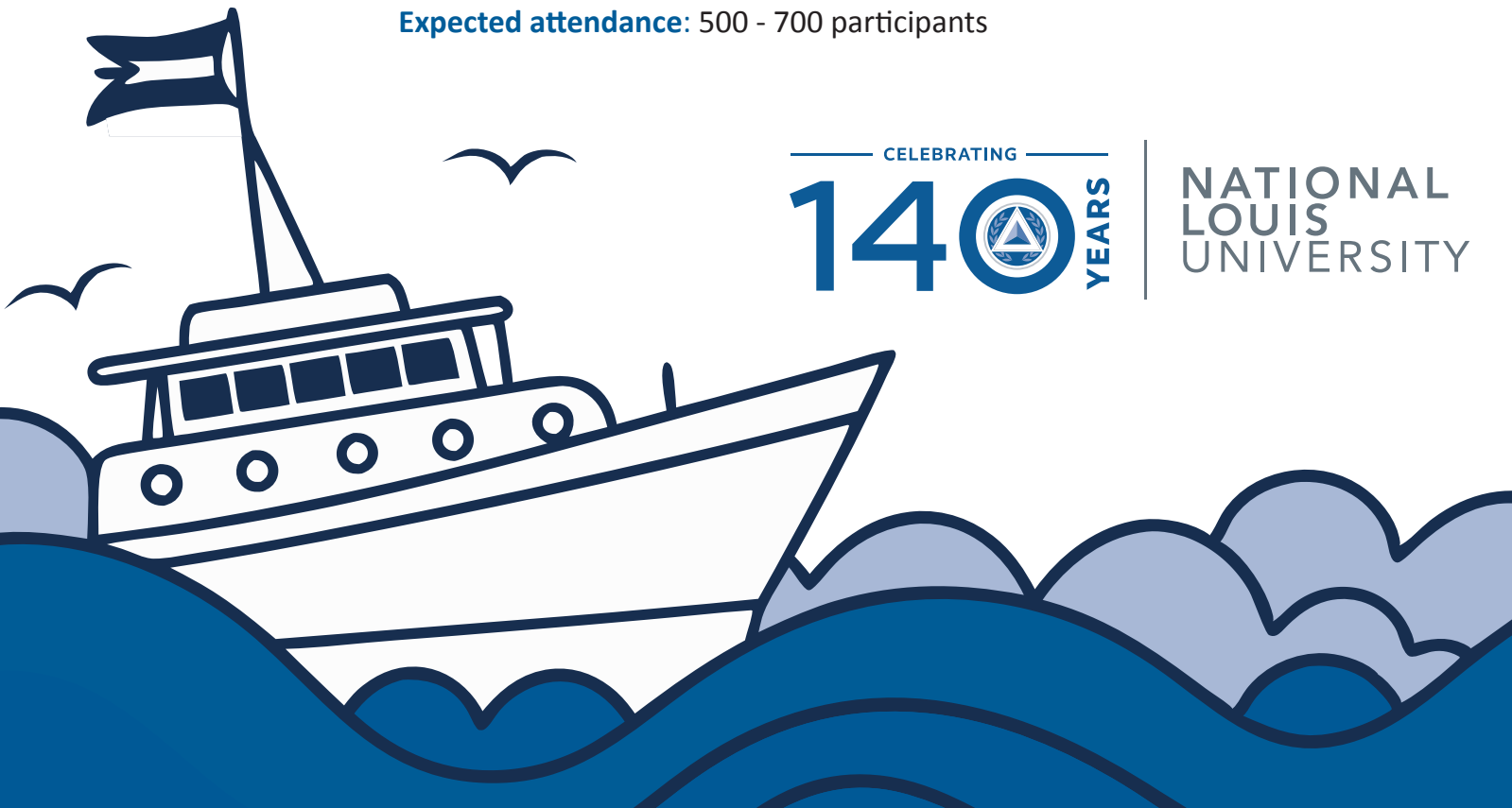
**NATIONAL
LOUIS
UNIVERSITY**



**McCormick Institute
for Early Childhood**

Audience: Early Childhood Education and Care (ECEC) Leaders and Administrators (center-based, school-based, and family child care programs), ECEC support program coordinators, technical assistance specialists, advocates, researchers, ECE Faculty, coaches, network leaders, and more.

Expected attendance: 500 - 700 participants



CELEBRATING
14  **YEARS**

**NATIONAL
LOUIS
UNIVERSITY**

Sponsorship Levels and Opportunities

	Recognition in Plenary/ Featured Sessions	Logo Placement on Conference Materials	Conference Registrations Included	Ads	Exhibit Table	Social Media Recognition	Inserts in Conference Bags	Email Marketing Recognition	Choice of Additional Options
Presenting Sponsor \$15,000	✓ Give a 3-minute welcome during opening plenary	✓ Plus a banner at the event	5	Full page in printed schedule AND app splash screen sponsor	✓ In premier location	✓ Plus two feature posts	✓	✓ Plus feature marketing email	✓ Up to \$5,000
Gold Sponsor \$10,000	✓	✓	3	Half page in printed schedule AND app banner ad	✓ In premier location	✓	✓	✓	✓ Up to \$3,000
Silver Sponsor \$5,000	✓	✓	2	Quarter page in printed schedule AND app banner ad	✓	✓	✓	✓	
Bronze Sponsor \$2,500		✓	1		✓	✓		✓	
Friend of the McCormick Institute \$1,000		✓			✓			✓	

Additional Options

Conference Bag Insert	\$500
Opening Luncheon - Meal and Speaker Fee	\$7,500
Dockside Break: Coffee & Tea	\$3,500
Public Policy Forum	\$5,000

Annual Paula Jorde Bloom Colloquium	\$5,000
Family Child Care Reception	\$4,200
Family Child Care Award Friday Breakfast	\$6,000
Closing Luncheon - Meal and Speaker Fee	\$7,500
Opening or Closing Luncheon Centerpieces	\$2,000
Hydration Station	\$3,500

Conference Bag Sponsor	\$2,500
Full-page Ad in Printed Schedule	\$2,000
Half-page Ad in Printed Schedule	\$1,000
Quarter-page Ad in Printed Schedule	\$500
Conference App Splashscreen (per day)	\$1,000
Conference App Banner Ad (per day)	\$250

Exhibitor Details

Exhibitors will be located in the ballroom, **where all general sessions and meal functions will take place**. Each 6' table includes two chairs, linen, and one wastebasket. Shipping, loading/unloading, and storage fees will apply. Electrical services for the Exhibit Hall must be arranged directly through Encore. Complimentary onsite parking is available.



Pricing

Exhibitor Fee: **\$450 per table**
Each 6' table includes two chairs, linen, and one wastebasket.
Option to purchase two tables for a larger exhibit.

Location

West Ballroom
Renaissance Schaumburg Convention Center Hotel
1551 Thoreau Dr N, Schaumburg, IL 60173

Exhibitor Schedule

Wednesday:
2:00 PM - 6:00 PM Move in & Setup

Thursday:
7:45 AM - 4:00 PM Exhibiting hours
4:00 PM - 5:00 PM Tear Down and Move Out

Thursday Conference Schedule

May 28, 2026	
7:00-7:30 AM	Taichi/Qigong Class
7:45 AM	Exhibitor Hall Opens (Ballroom)
7:45 AM	Registration Opens
7:30-8:45 AM	Hometown Hero Award & Continental Breakfast (Ballroom)
Morning Block	
8:45-9:45 AM	Concurrent sessions (60 Min)
8:45-10:15 AM	Concurrent sessions (90 Min)
10:30 AM - 12:00 PM	Public Policy Forum (Ballroom)
12:15-1:00 PM	Lunch Buffet (Ballroom)
Afternoon Block	
1:15-2:15 PM	Concurrent Sessions (60 Min)
1:15-2:45 PM	Concurrent Sessions (90 Min)
1:15-3:15 PM	Concurrent Sessions (120 Min)
2:45-4:00 PM	Dockside Break: Pick me ups (Treats, Cookies/ice cream) Near Exhibitor Hall
4:00-5:30 PM	Leadership Colloquium (90 minutes)
4:00 PM	Exhibitor Hall Tear Down (Ballroom)

Questions?

Exhibitors, contact Natalia Ambrozek, nambrozek@nl.edu.
For sponsorship and all other conference inquiries, contact leadershipconnections@nl.edu.