

CORE IC PNEUMATIC



3000 - 6500 LBS.

SPECIFICATIONS



8FGU15-32 | 8FDU15-32

CLASS
5

INTERNAL COMBUSTION ENGINE PNEUMATIC TIRE

[ToyotaForklift.com](https://www.toyotaforklift.com)

TRUCK SPECIFICATIONS

				MODEL NUMBERS			
GENERAL DATA				8FGU15	8FDU15	8FGU18	8FDU18
Load Capacity		lb (kg)		3000 (1350)	3000 (1350)	3500 (1600)	3500 (1600)
Power Type				Gasoline	Diesel	Gasoline	Diesel
Operator Position				Seated Rider	Seated Rider	Seated Rider	Seated Rider
Tire Type	Front / Rear			Pneumatic / Pneumatic	Pneumatic / Pneumatic	Pneumatic / Pneumatic	Pneumatic / Pneumatic
Wheels (x = driven)	Front / Rear			2x / 2	2x / 2	2x / 2	2x / 2
EXTERIOR DIMENSIONS				8FGU15	8FDU15	8FGU18	8FDU18
A	Maximum Fork Height (top of forks)		in (mm)	131 (3335)	131 (3335)	131 (3335)	131 (3335)
B	Free-Lift (top of forks)		in (mm)	5.7 (145)	5.7 (145)	5.7 (145)	5.7 (145)
C	Fork Size (T x W x L)		in (mm)	1.4 x 4 x 42 (35 x 100 x 1070)	1.4 x 4 x 42 (35 x 100 x 1070)	1.4 x 4 x 42 (35 x 100 x 1070)	1.4 x 4 x 42 (35 x 100 x 1070)
D	Fork Spread Max. / Min. (outer edge to edge)		in (mm)	36 (920) / 8 (200)	36 (920) / 8 (200)	36 (920) / 8 (200)	36 (920) / 8 (200)
E	Tilt Range (forward / backward)		deg	6 / 11	6 / 11	6 / 11	6 / 11
F	Length to Fork Face		in (mm)	89.6 (2275)	89.6 (2275)	90.7 (2305)	90.7 (2305)
G	Overall Width		in (mm)	42.1 (1070)	42.1 (1070)	42.1 (1070)	42.1 (1070)
H	Mast Lowered Height		in (mm)	84.5 (2145)	84.5 (2145)	84.5 (2145)	84.5 (2145)
I	Mast Extended Height (top of load backrest)		in (mm)	179.3 (4555)	179.3 (4555)	179.3 (4555)	179.3 (4555)
J	Overhead Guard Height		in (mm)	81.9 (2080)	81.9 (2080)	81.9 (2080)	81.9 (2080)
K	Turning Radius (inside / outside)		in (mm)	1.38 (35) / 76 (1930)	1.38 (35) / 76 (1930)	1.38 (35) / 78 (1980)	78 (1980)
L	Load Distance¹		in (mm)	15.9 (405)	15.9 (405)	15.9 (405)	15.9 (405)
M	Rear Overhang		in (mm)	15.2 (385)	15.2 (385)	16.3 (415)	16.3 (415)
N	Basic Right-Angle Stacking Aisle Width²		in (mm)	91.9 (2335)	91.9 (2335)	93.9 (2385)	93.9 (2385)
PERFORMANCE DATA				8FGU15	8FDU15	8FGU18	8FDU18
Speeds	Maximum Travel (forward / reverse)	Full Load	mph (km/h)	11.5 (18.5) / 11.5 (18.5)	11.8 (19.0) / 11.8 (19.0)	11.5 (18.5) / 11.5 (18.5)	11.8 (19.0) / 11.8 (19.0)
		No Load	mph (km/h)	11.8 (19.0) / 11.8 (19.0)	12.1 (19.5) / 12.1 (19.5)	11.8 (19.0) / 11.8 (19.0)	12.1 (19.5) / 12.1 (19.5)
	Lifting	Full Load	fpm (mm/sec)	131 (665)	128 (650)	131 (665)	128 (650)
		No Load	fpm (mm/sec)	134 (680)	133 (675)	134 (680)	133 (675)
	Lowering	Full Load	fpm (mm/sec)	98 (500)	98 (500)	98 (500)	98 (500)
		No Load	fpm (mm/sec)	108 (550)	108 (550)	108 (550)	108 (550)
Drawbar Pull	Maximum	Full Load	lb (kg)	4400 (2000)	4040 (1830)	3930 (1780)	3930 (1780)
		No Load	lb (kg)	1550 (700)	1570 (710)	1300 (590)	1300 (590)
Gradeability	1 mph (1.5 km/h)³	Full Load	%	45	45	40	40
		Full Load	%	45	45	45	45
	Maximum³	No Load	%	22	22	20	10
TRUCK WEIGHTS				8FGU15	8FDU15	8FGU18	8FDU18
Total Weight		lb (kg)		5500 (2500)	5630 (2570)	5920 (2690)	6060 (2750)
Weight Distribution	Full Load (front / rear)		lb (kg)	7560 (3560) / 940 (440)	7610 (3590) / 1020 (480)	8400 (3960) / 1020 (480)	8460 (3990) / 1100 (510)
	No Load (front / rear)		lb (kg)	2500 (1140) / 3000 (1360)	2560 (1170) / 3070 (1400)	2500 (1140) / 3420 (1550)	2560 (1170) / 3500 (1580)
TIRES				8FGU15	8FDU15	8FGU18	8FDU18
Tires	Number (front / rear)			2 / 2	2 / 2	2 / 2	2 / 2
	Size	Front		6.50-10-10PR (1)	6.50-10-10PR (1)	6.50-10-10PR (1)	6.50-10-10PR (1)
		Rear		5.00-8-8PR (1)	5.00-8-8PR (1)	5.00-8-8PR (1)	5.00-8-8PR (1)
Wheelbase		in (mm)		58.5 (1485)	58.5 (1485)	58.5 (1485)	58.5 (1485)
Tread Width (front / rear)		in (mm)		34.8 (885) / 35.2 (895)	34.8 (885) / 35.2 (895)	34.8 (885) / 35.2 (895)	34.8 (885) / 35.2 (895)
Underclearance (full load)	Minimum with Load		in (mm)	3.9 (100)	3.9 (100)	3.9 (100)	3.9 (100)
	Center of Wheelbase		in (mm)	4.5 (115)	4.5 (115)	4.5 (115)	4.5 (115)
Brake	Service (foot) / Parking			Hydraulic / Mechanical	Hydraulic / Mechanical	Hydraulic / Mechanical	Hydraulic / Mechanical
POWER SYSTEM				8FGU15	8FDU15	8FGU18	8FDU18
Battery (5-hour rating)		V / Ah		12 / 48	12 / 52	12 / 48	12 / 52
Internal Combustion Engine	Make / Model			TOYOTA / 4Y - ECS	TOYOTA / 1ZS	TOYOTA / 4Y - ECS	TOYOTA / 1ZS
	Rated Horsepower @ rpm	SAE HP		51 @ 2570 Net	53 @ 2200 Net	51 @ 2570 Net	53 @ 2200 Net
		(kW)		(38 @ 2570)	(40 @ 2200)	(38 @ 2570)	(40 @ 2200)
	Rated Torque @ rpm	SAE ft-lb		118 @ 2100 Net	128 @ 1800 Net	118 @ 2100 Net	128 @ 1800 Net
		(N-m)		(160 @ 2100)	(174 @ 1800)	(160 @ 2100)	(174 @ 1800)
	Number of Cylinders			4	3	4	3
Piston Displacement		cu in (cc)	136 (2237)	110 (1795)	136 (2237)	110 (1795)	
Fuel Tank Capacity		US gal (liter)	12 (45)	12 (45)	12 (45)	12 (45)	
Transmission	Type			Powershift	Powershift	Powershift	Powershift
	Speeds (forward / reverse)			1 / 1	1 / 1	1 / 1	1 / 1
Auxiliary Hydraulic Function Specifications (for attachments)⁴	Max. Operating Pressure		psi (kg/cm2)	2275 (160)	2275 (160)	2275 (160)	2275 (160)
	Max. Flow Rate		gpm	17	17	17	17

1 Load distance at centerline of front axle to front face of forks.

2 Basic right-angle stacking aisle width, add load length & clearance.

3 Computed values. Performance of LPG fuel system may be less than that of standard model shown.

4 Values taken at Hydraulic Control Valve. Does not take in to consideration losses through mast plumbing (hosing, fittings, QDs, etc.).

MODEL NUMBERS

GENERAL DATA				8FGU20	8FDU20	8FGU25	8FDU25
Load Capacity			lb (kg)	4000 (1800)	4000 (1800)	5000 (2250)	5000 (2250)
Power Type				Gasoline	Diesel	Gasoline	Diesel
Operator Position				Seated Rider	Seated Rider	Seated Rider	Seated Rider
Tire Type	Front / Rear			Pneumatic / Pneumatic	Pneumatic / Pneumatic	Pneumatic / Pneumatic	Pneumatic / Pneumatic
Wheels (x = driven)	Front / Rear			2x / 2	2x / 2	2x / 2	2x / 2
EXTERIOR DIMENSIONS				8FGU20	8FDU20	8FGU25	8FDU25
A	Maximum Fork Height (top of forks)		in (mm)	131.5 (3340)	131.5 (3340)	131.5 (3340)	131.5 (3340)
B	Free-Lift (top of forks)		in (mm)	6.1 (155)	6.1 (155)	6.1 (155)	6.1 (155)
C	Fork Size (T x W x L)		in (mm)	1.6 x 5 x 42 (40 x 125 x 1070)	1.6 x 5 x 42 (40 x 125 x 1070)	1.6 x 5 x 42 (40 x 125 x 1070)	1.6 x 5 x 42 (40 x 125 x 1070)
D	Fork Spread Max. / Min. (outer edge to edge)		in (mm)	40 (1020) / 10 (250)	40 (1020) / 10 (250)	40 (1020) / 10 (250)	40 (1020) / 10 (250)
E	Tilt Range (forward / backward)		deg	6 / 11	6 / 11	6 / 11	6 / 11
F	Length to Fork Face		in (mm)	101.4 (2575)	101.4 (2575)	103.9 (2640)	103.9 (2640)
G	Overall Width		in (mm)	45.3 (1150)	45.3 (1150)	45.3 (1150)	45.3 (1150)
H	Mast Lowered Height		in (mm)	84.5 (2145)	84.5 (2145)	84.5 (2145)	84.5 (2145)
I	Mast Extended Height (top of load backrest)		in (mm)	179.5 (4560)	179.5 (4560)	179.5 (4560)	179.5 (4560)
J	Overhead Guard Height		in (mm)	83.1 (2110)	83.1 (2110)	83.1 (2110)	83.1 (2110)
K	Turning Radius (inside / outside)		in (mm)	5.91 (150) / 84.7 (2150)	5.91 (150) / 84.7 (2150)	5.91 (150) / 87.5 (2220)	5.91 (150) / 87.5 (2220)
L	Load Distance ¹		in (mm)	18.5 (470)	18.5 (470)	18.5 (470)	18.5 (470)
M	Rear Overhang		in (mm)	17.9 (455)	17.9 (455)	20.5 (520)	20.5 (520)
N	Basic Right-Angle Stacking Aisle Width ²		in (mm)	103.2 (2620)	103.2 (2620)	105.9 (2690)	105.9 (2690)
PERFORMANCE DATA				8FGU20	8FDU20	8FGU25	8FDU25
Speeds	Maximum Travel (forward / reverse)	Full Load	mph (km/h)	10.9 (17.5) / 10.9 (17.5)	10.3 (16.5) / 10.3 (16.5)	10.9 (17.5) / 10.9 (17.5)	10.3 (16.5) / 10.3 (16.5)
		No Load	mph (km/h)	11.2 (18.0) / 11.2 (18.0)	10.7 (17.0) / 10.7 (17.0)	11.2 (18.0) / 11.2 (18.0)	10.7 (17.0) / 10.7 (17.0)
	Lifting	Full Load	fpm (mm/sec)	118 (600)	121 (615)	118 (600)	121 (615)
		No Load	fpm (mm/sec)	126 (640)	129 (655)	126 (640)	129 (655)
	Lowering	Full Load	fpm (mm/sec)	98 (500)	98 (500)	98 (500)	98 (500)
		No Load	fpm (mm/sec)	98 (500)	98 (500)	98 (500)	98 (500)
Drawbar Pull	Maximum	Full Load	lb (kg)	4250 (1930)	4475 (2030)	4250 (1930)	4475 (2030)
		No Load	lb (kg)	2020 (920)	2040 (930)	1910 (870)	1930 (880)
Gradeability	1 mph (1.5 km/h) ³	Full Load	%	37	35	31	30
		Full Load	%	41	42	34	35
	Maximum ³	No Load	%	23	23	20	20
TRUCK WEIGHTS				8FGU20	8FDU20	8FGU25	8FDU25
Total Weight		lb (kg)		7080 (3210)	7230 (3290)	7840 (3560)	7990 (3630)
Weight Distribution	Full Load (front / rear)		lb (kg)	9750 (4600) / 1330 (610)	9810 (4630) / 1420 (660)	11260 (5330) / 1580 (730)	11320 (5350) / 1670 (780)
	No Load (front / rear)		lb (kg)	3130 (1420) / 3950 (1790)	3180 (1450) / 4050 (1840)	2980 (1350) / 4860 (2210)	3040 (1380) / 4950 (2250)
TIRES				8FGU20	8FDU20	8FGU25	8FDU25
Tires	Number (front / rear)			2 / 2	2 / 2	2 / 2	2 / 2
	Size	Front		7.00-12-12PR (1)	7.00-12-12PR (1)	7.00-12-12PR (1)	7.00-12-12PR (1)
		Rear		6.00-9-10PR (1)	6.00-9-10PR (1)	6.00-9-10PR (1)	6.00-9-10PR (1)
Wheelbase			in (mm)	65 (1650)	65 (1650)	65 (1650)	65 (1650)
Tread Width (front / rear)		in (mm)	37.8 (960) / 38.0 (965)	37.8 (960) / 38.0 (965)	37.8 (960) / 38.0 (965)	37.8 (960) / 38.0 (965)	
Underclearance (full load)	Minimum with Load		in (mm)	3.7 (95)	3.7 (95)	3.7 (95)	3.7 (95)
	Center of Wheelbase		in (mm)	5.5 (140)	5.5 (140)	5.5 (140)	5.5 (140)
Brake	Service (foot) / Parking			Hydraulic / Mechanical	Hydraulic / Mechanical	Hydraulic / Mechanical	Hydraulic / Mechanical
POWER SYSTEM				8FGU20	8FDU20	8FGU25	8FDU25
Battery (5-hour rating)		V / Ah		12 / 48	12 / 52	12 / 48	12 / 52
Internal Combustion Engine	Make / Model			TOYOTA / 4Y - ECS	TOYOTA / 1ZS	TOYOTA / 4Y - ECS	TOYOTA / 1ZS
	Rated Horsepower @ rpm	SAE HP		51 @ 2570 Net	55 @ 2200 Net	51 @ 2570 Net	55 @ 2200 Net
		(kW)		(38 @ 2570)	(41 @ 2200)	(38 @ 2570)	(41 @ 2200)
	Rated Torque @ rpm	SAE ft-lb		118 @ 2100 Net	148 @ 1600 Net	118 @ 2100 Net	148 @ 1600 Net
		(N-m)		(160 @ 2100)	(200 @ 1600)	(160 @ 2100)	(200 @ 1600)
	Number of Cylinders			4	3	4	3
	Piston Displacement		cu in (cc)	136 (2237)	110 (1795)	136 (2237)	110 (1795)
Fuel Tank Capacity		US gal (liter)	15.9	15.9	15.9	15.9	
Transmission	Type			Powershift	Powershift	Powershift	Powershift
	Speeds (forward / reverse)			1 / 1	1 / 1	1 / 1	1 / 1
Auxiliary Hydraulic Function Specifications (for attachments) ⁴	Max. Operating Pressure		psi (kg/cm2)	2275 (160)	2275 (160)	2275 (160)	2275 (160)
	Max. Flow Rate		gpm	20	19	20	19

1 Load distance at centerline of front axle to front face of forks.

2 Basic right-angle stacking aisle width, add load length & clearance.

3 Computed values. Performance of LPG fuel system may be less than that of standard model shown.

4 Values taken at Hydraulic Control Valve. Does not take in to consideration losses through mast plumbing (hosing, fittings, QDs, etc.).

TRUCK SPECIFICATIONS

GENERAL DATA				MODEL NUMBERS			
				8FGU30	8FDU30	8FGU32	8FDU32
Load Capacity		lb (kg)		6000 (2700)	6000 (2700)	6500 (3000)	6500 (3000)
Power Type				Gasoline	Diesel	Gasoline	Diesel
Operator Position				Seated Rider	Seated Rider	Seated Rider	Seated Rider
Tire Type	Front / Rear			Pneumatic / Pneumatic	Pneumatic / Pneumatic	Pneumatic / Pneumatic	Pneumatic / Pneumatic
Wheels (x = driven)	Front / Rear			2x / 2	2x / 2	2x / 2	2x / 2
EXTERIOR DIMENSIONS				8FGU30	8FDU30	8FGU32	8FDU32
A	Maximum Fork Height (top of forks)	in (mm)		131.5 (3345)	131.5 (3345)	131.5 (3345)	131.5 (3345)
B	Free-Lift (top of forks)	in (mm)		5.3 (135)	5.3 (135)	5.3 (135)	5.3 (135)
C	Fork Size (T x W x L)	in (mm)		1.8 x 5 x 42 (45 x 125 x 1070)	1.8 x 5 x 42 (45 x 125 x 1070)	1.8 x 5 x 42 (45 x 125 x 1070)	1.8 x 5 x 42 (45 x 125 x 1070)
D	Fork Spread Max. / Min. (outer edge to edge)	in (mm)		42 (1070) / 10 (250)	42 (1070) / 10 (250)	42 (1070) / 10 (250)	42 (1070) / 10 (250)
E	Tilt Range (forward / backward)	deg		6 / 11	6 / 11	6 / 11	6 / 11
F	Length to Fork Face	in (mm)		109.4 (2780)	109.4 (2780)	110.2 (2800)	110.2 (2800)
G	Overall Width	in (mm)		48.8 (1240)	48.8 (1240)	48.8 (1240)	48.8 (1240)
H	Mast Lowered Height	in (mm)		85.3 (2165)	85.3 (2165)	85.3 (2165)	85.3 (2165)
I	Mast Extended Height (top of load backrest)	in (mm)		179.7 (4565)	179.7 (4565)	179.7 (4565)	179.7 (4565)
J	Overhead Guard Height	in (mm)		85.5 (2170)	85.5 (2170)	85.5 (2170)	85.5 (2170)
K	Turning Radius (inside / outside)	in (mm)		7.48 (190) / 92.5 (2350)	7.48 (190) / 92.5 (2350)	93.3 (2370)	93.3 (2370)
L	Load Distance¹	in (mm)		19.1 (485)	19.1 (485)	19.1 (485)	19.1 (485)
M	Rear Overhang	in (mm)		23 (595)	23 (595)	24 (615)	24 (615)
N	Basic Right-Angle Stacking Aisle Width²	in (mm)		111.6 (2835)	111.6 (2835)	112.4 (2855)	112.4 (2855)
PERFORMANCE DATA				8FGU30	8FDU30	8FGU32	8FDU32
Speeds	Maximum Travel (forward / reverse)	Full Load	mph (km/h)	11.2 (18.0) / 11.2 (18.0)	10.3 (16.5) / 10.3 (16.5)	11.2 (18.0) / 11.2 (18.0)	10.3 (16.5) / 10.3 (16.5)
		No Load	mph (km/h)	11.5 (18.5) / 11.5 (18.5)	10.7 (17.0) / 10.7 (17.0)	11.5 (18.5) / 11.5 (18.5)	10.7 (17.0) / 10.7 (17.0)
	Lifting	Full Load	fpm (mm/sec)	100 (510)	98 (500)	100 (510)	98 (500)
		No Load	fpm (mm/sec)	108 (550)	104 (530)	108 (550)	104 (530)
	Lowering	Full Load	fpm (mm/sec)	98 (500)	98 (500)	98 (500)	98 (500)
		No Load	fpm (mm/sec)	98 (500)	98 (500)	98 (500)	98 (500)
Drawbar Pull	Maximum	Full Load	lb (kg)	4400 (2000)	4475 (2030)	4400 (2000)	4475 (2030)
		No Load	lb (kg)	2310 (1050)	2340 (1060)	2310 (1050)	2340 (1060)
Gradeability	1 mph (1.5 km/h)³	Full Load	%	24	26	24	25
		Full Load	%	26	30	26	29
	Maximum³	No Load	%	21	20	21	20
TRUCK WEIGHTS				8FGU30	8FDU30	8FGU32	8FDU32
Total Weight		lb (kg)		9270 (4210)	9270 (4210)	9500 (4320)	9650 (4390)
Weight Distribution	Full Load (front / rear)	lb (kg)		13290 (6300) / 1980 (910)	13290 (6300) / 1980 (910)	14050 (6670) / 1950 (900)	14110 (6700) / 2040 (940)
	No Load (front / rear)	lb (kg)		3430 (1560) / 5840 (2650)	3430 (1560) / 5840 (2650)	3360 (1530) / 6140 (2790)	3420 (1560) / 6230 (2830)
TIRES				8FGU30	8FDU30	8FGU32	8FDU32
Tires	Number (front / rear)			2 / 2	2 / 2	2 / 2	2 / 2
	Size	Front		28 x 9-15-12PR (1)	28 x 9-15-12PR (1)	28 x 9-15-14PR (1)	28 x 9-15-14 PR (1)
		Rear		6.50-10-10PR (1)	6.50-10-10PR (1)	6.50-10-10PR (1)	6.50-10-10PR (1)
Wheelbase		in (mm)		66.9 (1700)	66.9 (1700)	66.9 (1700)	66.9 (1700)
Tread Width (front / rear)		in (mm)		39.8 (1010) / 38 (965)	39.8 (1010) / 38 (965)	39.8 (1010) / 38 (965)	39.8 (1010) / 38 (965)
Underclearance (full load)	Minimum with Load		in (mm)	4.5 (115)	4.5 (115)	4.5 (115)	4.5 (115)
	Center of Wheelbase		in (mm)	7.3 (185)	7.3 (185)	7.3 (185)	7.3 (185)
Brake	Service (foot) / Parking			Hydraulic / Mechanical	Hydraulic / Mechanical	Hydraulic / Mechanical	Hydraulic / Mechanical
POWER SYSTEM				8FGU30	8FDU30	8FGU32	8FDU32
Battery (5-hour rating)		V / Ah		12 / 48	12 / 52	12 / 48	12 / 52
Internal Combustion Engine	Make / Model			TOYOTA / 4Y - ECS - HP⁵	TOYOTA / 1ZS	TOYOTA / 4Y - ECS - HP⁵	TOYOTA / 1ZS
	Rated Horsepower @ rpm	SAE HP		57 @ 2570 Net	55 @ 2200 Net	57 @ 2570 Net	55 @ 2200 Net
		(kW)		(42 @ 2570)	(41 @ 2200)	(42 @ 2570)	(41 @ 2200)
	Rated Torque @ rpm	SAE ft-lb		118 @ 2200 Net	148 @ 1600 Net	118 @ 2200 Net	148 @ 1600 Net
		(N-m)		(160 @ 2200)	(200 @ 1600)	(160 @ 2200)	(200 @ 1600)
	Number of Cylinders			4	3	4	3
Piston Displacement		cu in (cc)		136 (2237)	110 (1795)	136 (2237)	110 (1795)
Fuel Tank Capacity		US gal (liter)		15.9 (60)	15.9 (60)	15.9 (60)	15.9 (60)
Transmission	Type			Powershift	Powershift	Powershift	Powershift
	Speeds (forward / reverse)			1 / 1	1 / 1	1 / 1	1 / 1
Auxiliary Hydraulic Function Specifications (for attachments)⁴	Max. Operating Pressure		psi (kg/cm2)	2275 (160)	2275 (160)	2275 (160)	2275 (160)
	Max. Flow Rate		gpm	21	20	21	20

1 Load distance at centerline of front axle to front face of forks.

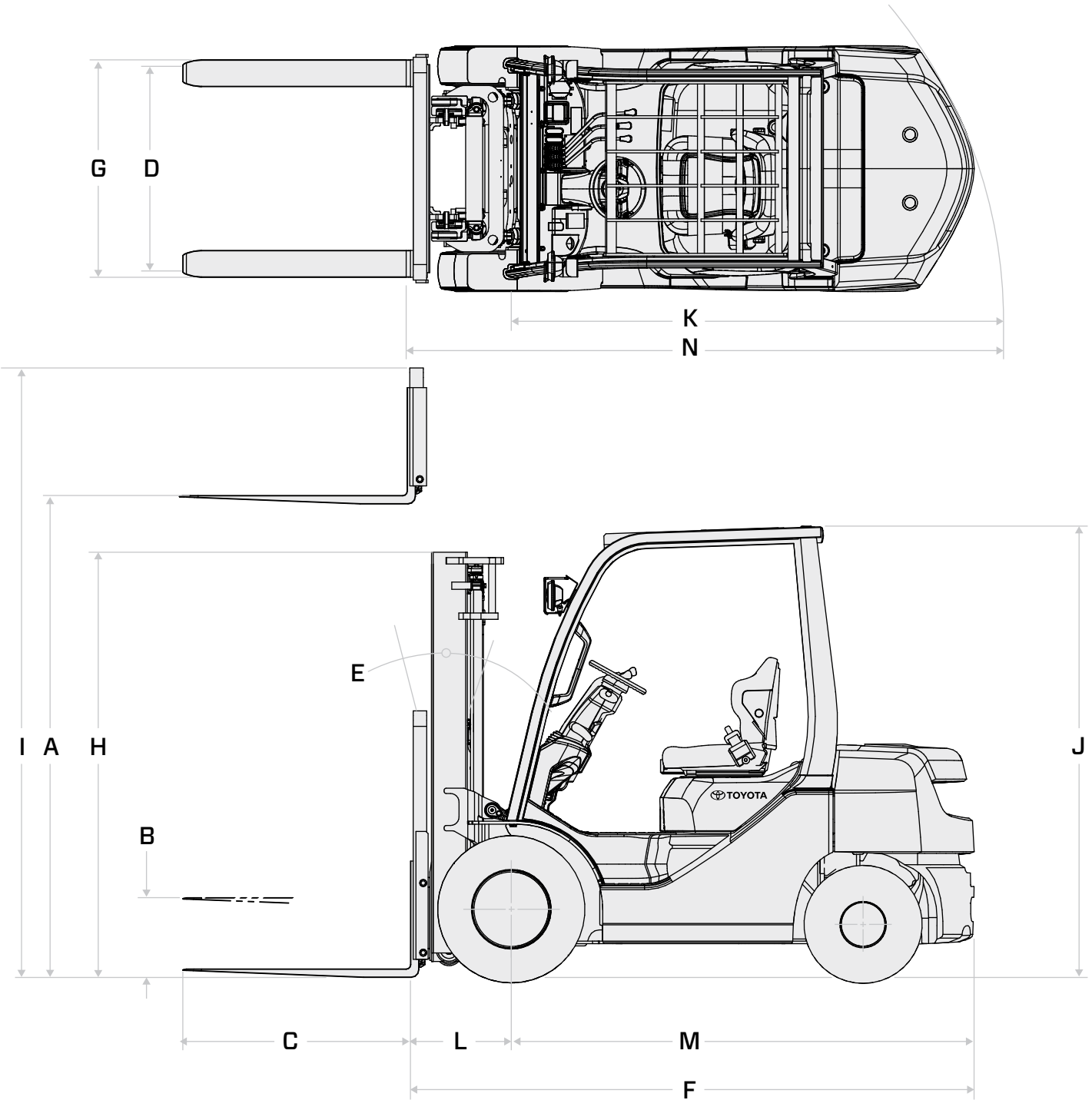
2 Basic right-angle stacking aisle width, add load length & clearance.

3 Computed values. Performance of LPG fuel system may be less than that of standard model shown.

4 Values taken at Hydraulic Control Valve. Does not take in to consideration losses through mast plumbing (hosing, fittings, QDs, etc.).

5 LPG-only units.

EXTERIOR DIMENSIONS



MAST SPECIFICATIONS

MAST TYPE	MAXIMUM FORK HEIGHT (TOP OF FORKS)	OVERALL HEIGHT			FREE-LIFT		SINGLE TIRE			
		LOWERED	EXTENDED		WITHOUT LOAD BACKREST	WITH STANDARD LOAD BACKREST ¹	TILT RANGE		LOAD CAPACITY AT 24 IN. (610 MM) LOAD CENTER	
			WITHOUT LOAD BACKREST	WITH STANDARD LOAD BACKREST ¹			FWD	BWD	NARROW TREAD	WIDE TREAD
	in (mm)	in (mm)	in (mm)	in (mm)	in (mm)	in (mm)	deg	deg	lb (kg)	lb (kg)
8FGU15 / 8FDU15										
Wide Visible (V)	80 (2035)	58.9 (1495)	104.1 (2645)	128.1 (3255)	5.7 (145)	5.7 (145)	6	11	3000 (1350)	3000 (1350)
	119 (3035)	78.5 (1995)	143.5 (3645)	167.5 (4255)	5.7 (145)	5.7 (145)	6	11	3000 (1350)	3000 (1350)
	131 (3335)	84.5 (2145)	155.3 (3945)	179.3 (4555)	5.7 (145)	5.7 (145)	6	11	3000 (1350)	3000 (1350)
	139 (3535)	88.4 (2245)	163.2 (4145)	187.2 (4755)	5.7 (145)	5.7 (145)	6	11	3000 (1350)	3000 (1350)
	147 (3735)	94.7 (2405)	171.1 (4345)	195.1 (4955)	5.7 (145)	5.7 (145)	6	11	3000 (1350)	3000 (1350)
	158.5 (4035)	102.2 (2595)	182.9 (4645)	206.9 (5255)	5.7 (145)	5.7 (145)	6	11	3000 (1350)	3000 (1350)
Full Free-Lift 2-Stage (FV)	119 (3035)	78.5 (1995)	141.9 (3605)	167.5 (4255)	56.1 (1430)	30.5 (775)	6	11	3000 (1350)	3000 (1350)
	131 (3335)	84.5 (2145)	153.7 (3905)	179.3 (4555)	62 (1580)	36.4 (925)	6	11	3000 (1350)	3000 (1350)
	139 (3535)	88.4 (2245)	161.6 (4105)	187.2 (4755)	65.9 (1680)	40.4 (1025)	6	11	3000 (1350)	3000 (1350)
Full Free-Lift 3-Stage (FSV)	158.5 (4035)	74.6 (1895)	180.1 (4575)	206.9 (5255)	53.3 (1360)	25.0 (635)	6	6	2850 (1300)	2850 (1300)
	170.5 (4335)	78.5 (1995)	191.9 (4875)	218.7 (5555)	57.3 (1460)	28.9 (735)	6	6	2800 (1250)	2850 (1300)
	189 (4800)	84.4 (2145)	209.6 (5325)	236.6 (6010)	63.2 (1610)	34.8 (885)	6	6	2750 (1250)	2800 (1250)
	198 (5035)	88.4 (2245)	219.5 (5575)	246.3 (6255)	67.1 (1710)	38.8 (985)	6	6	2650 (1200)	2750 (1250)
	217.5 (5535)	94.7 (2405)	239.2 (6075)	265.9 (6755)	73.4 (1870)	45.1 (1145)	6	6	2050 (950)	2200 (1000)
	237.5 (6035)	102.2 (2595)	258.9 (6575)	285.6 (7255)	80.9 (2060)	52.6 (1335)	6	6	1500 (700)	1650 (750)

MAST TYPE	MAXIMUM FORK HEIGHT (TOP OF FORKS)	OVERALL HEIGHT			FREE-LIFT		SINGLE TIRE			
		LOWERED	EXTENDED		WITHOUT LOAD BACKREST	WITH STANDARD LOAD BACKREST¹	TILT RANGE		LOAD CAPACITY AT 24 IN. (610 MM) LOAD CENTER	
			WITHOUT LOAD BACKREST	WITH STANDARD LOAD BACKREST¹			FWD	BWD	NARROW TREAD	WIDE TREAD
	in (mm)	in (mm)	in (mm)	in (mm)	in (mm)	in (mm)	deg	deg	lb (kg)	lb (kg)
8FGU18 / 8FDU18										
Wide Visible (V)	80 (2035)	58.9 (1495)	104.1 (2645)	128.1 (3255)	5.7 (145)	5.7 (145)	6	11	3500 (1600)	3500 (1600)
	119 (3035)	78.5 (1995)	143.5 (3645)	167.5 (4255)	5.7 (145)	5.7 (145)	6	11	3500 (1600)	3500 (1600)
	131 (3335)	84.5 (2145)	155.3 (3945)	179.3 (4555)	5.7 (145)	5.7 (145)	6	11	3500 (1600)	3500 (1600)
	139 (3535)	88.4 (2245)	163.2 (4145)	187.2 (4755)	5.7 (145)	5.7 (145)	6	11	3500 (1600)	3500 (1600)
	147 (3735)	94.7 (2405)	171.1 (4345)	195.1 (4955)	5.7 (145)	5.7 (145)	6	11	3500 (1600)	3500 (1600)
Full Free-Lift 2-Stage (FV)	158.5 (4035)	102.2 (2595)	182.9 (4645)	206.9 (5255)	5.7 (145)	5.7 (145)	6	11	3400 (1550)	3500 (1600)
	119 (3035)	78.5 (1995)	141.9 (3605)	167.5 (4255)	56.1 (1430)	30.5 (775)	6	11	3500 (1600)	3500 (1600)
	131 (3335)	84.5 (2145)	153.7 (3905)	179.3 (4555)	62 (1580)	36.4 (925)	6	11	3500 (1600)	3500 (1600)
	139 (3535)	88.4 (2245)	161.6 (4105)	187.2 (4755)	65.9 (1680)	40.4 (1025)	6	11	3500 (1600)	3500 (1600)
Full Free-Lift 3-Stage (FSV)	158.5 (4035)	74.6 (1895)	180.1 (4575)	206.9 (5255)	53.3 (1360)	25.0 (635)	6	6	3200 (1450)	3200 (1450)
	170.5 (4335)	78.5 (1995)	191.9 (4875)	218.7 (5555)	57.3 (1460)	28.9 (735)	6	6	3150 (1400)	3200 (1450)
	189 (4800)	84.4 (2145)	209.6 (5325)	236.6 (6010)	63.2 (1610)	34.8 (885)	6	6	2900 (1300)	3050 (1400)
	198 (5035)	88.4 (2245)	219.5 (5575)	246.3 (6255)	67.1 (1710)	38.8 (985)	6	6	2550 (1150)	3000 (1350)
	217.5 (5535)	94.7 (2405)	239.2 (6075)	265.9 (6755)	73.4 (1870)	45.1 (1145)	6	6	1850 (850)	2400 (1100)
	237.5 (6035)	102.2 (2595)	258.9 (6575)	285.6 (7255)	80.9 (2060)	52.6 (1335)	6	6	1300 (600)	1750 (800)

1 Height of standard load backrest is 48" (1220 mm).

MAST TYPE	MAXIMUM FORK HEIGHT (TOP OF FORKS)	OVERALL HEIGHT			FREE-LIFT		SINGLE TIRE			DUAL TIRE	
		LOWERED	EXTENDED		WITHOUT LOAD BACKREST	WITH STANDARD LOAD BACKREST¹	TILT RANGE	LOAD CAPACITY AT 24 IN. (610 MM) LOAD CENTER		TILT RANGE	LOAD CAPACITY AT 24 IN. (610 MM) LOAD CENTER
			WITHOUT LOAD BACKREST	WITH STANDARD LOAD BACKREST¹				FWD / BWD	NARROW TREAD		
	in (mm)	in (mm)	in (mm)	in (mm)	in (mm)	in (mm)	deg	lb (kg)	lb (kg)	deg	lb (kg)
8FGU20 / 8FDU20											
Wide Visible (V)	80 (2040)	58.9 (1495)	104.7 (2660)	128.3 (3260)	6.1 (155)	6.1 (155)	6 / 11	4000 (1800)	4000 (1800)	6 / 11	4000 (1800)
	119.5 (3040)	78.5 (1995)	144.1 (3660)	167.7 (4260)	6.1 (155)	6.1 (155)	6 / 11	4000 (1800)	4000 (1800)	6 / 11	4000 (1800)
	131.5 (3340)	84.5 (2145)	155.9 (3960)	179.5 (4560)	6.1 (155)	6.1 (155)	6 / 11	4000 (1800)	4000 (1800)	6 / 11	4000 (1800)
	139 (3540)	88.4 (2245)	163.8 (4160)	187.4 (4760)	6.1 (155)	6.1 (155)	6 / 11	4000 (1800)	4000 (1800)	6 / 11	4000 (1800)
	147 (3740)	94.7 (2405)	171.7 (4360)	195.3 (4960)	6.1 (155)	6.1 (155)	6 / 11	4000 (1800)	4000 (1800)	6 / 11	4000 (1800)
	159 (4040)	102.2 (2595)	183.5 (4660)	207.1 (5260)	6.1 (155)	6.1 (155)	6 / 11	4000 (1800)	4000 (1800)	6 / 11	4000 (1800)
Full Free-Lift 2-Stage (FV)	119.5 (3040)	78.5 (1995)	143.5 (3645)	167.7 (4260)	55.1 (1400)	30.5 (775)	6 / 11	4000 (1800)	4000 (1800)	6 / 11	4000 (1800)
	131.5 (3340)	84.5 (2145)	151.4 (3845)	179.5 (4560)	61 (1550)	36.4 (925)	6 / 11	4000 (1800)	4000 (1800)	6 / 11	4000 (1800)
	139 (3540)	88.4 (2245)	163.2 (4145)	187.4 (4760)	65 (1650)	40.4 (1025)	6 / 11	4000 (1800)	4000 (1800)	6 / 11	4000 (1800)
Full Free-Lift 3-Stage (FSV)	159 (4040)	74.6 (1895)	181.5 (4610)	206.7 (5250)	52.4 (1330)	26.6 (675)	6 / 6	4000 (1800)	4000 (1800)	6 / 6	4000 (1800)
	170.5 (4340)	78.5 (1995)	193.3 (4910)	218.5 (5550)	56.3 (1430)	30.5 (775)	6 / 6	4000 (1800)	4000 (1800)	6 / 6	4000 (1800)
	189 (4800)	84.5 (2145)	211.4 (5370)	236.6 (6010)	62.2 (1580)	36.4 (915)	6 / 6	3900 (1750)	4000 (1800)	6 / 6	4000 (1800)
	198 (5040)	88.4 (2245)	220.9 (5610)	246.1 (6250)	66.1 (1680)	40.4 (1015)	6 / 6	3550 (1600)	4000 (1800)	6 / 6	4000 (1800)
	218 (5540)	94.7 (2405)	240.6 (6110)	265.7 (6750)	72.4 (1840)	46.7 (1185)	6 / 6	2800 (1250)	3500 (1600)	6 / 6	3750 (1700)
	237.5 (6040)	102.2 (2595)	260.2 (6610)	285.4 (7250)	79.9 (2030)	54.2 (1375)	6 / 6	2000 (900)	2550 (1150)	6 / 6	3300 (1500)
	257.5 (6540)	112 (2845)	279.9 (7110)	305.1 (7750)	89.8 (2280)	64 (1625)	—	—	—	6 / 6	3200 (1450)
	277 (7040)	121.9 (3095)	299.6 (7610)	324.8 (8250)	99.6 (2530)	73.9 (1875)	—	—	—	6 / 6	2600 (1200)
Full Free-Lift 4-Stage (QFV)	240 (6100)	84.8 (2155)	263.4 (6690)	289.4 (7350)	61 (1550)	35 (895)	6 / 3	—	—	6 / 3	—
	258 (6600)	90.7 (2305)	281.5 (7150)	307.5 (7810)	67 (1700)	41 (1045)	6 / 3	—	2600 (1170)	6 / 3	—

MAST TYPE	MAXIMUM FORK HEIGHT (TOP OF FORKS)	OVERALL HEIGHT			FREE-LIFT		SINGLE TIRE			DUAL TIRE	
		LOWERED	EXTENDED		WITHOUT LOAD BACKREST	WITH STANDARD LOAD BACKREST¹	TILT RANGE	LOAD CAPACITY AT 24 IN. (610 MM) LOAD CENTER		TILT RANGE	LOAD CAPACITY AT 24 IN. (610 MM) LOAD CENTER
			WITHOUT LOAD BACKREST	WITH STANDARD LOAD BACKREST¹				FWD / BWD	NARROW TREAD		
	in (mm)	in (mm)	in (mm)	in (mm)	in (mm)	in (mm)	deg	lb (kg)	lb (kg)	deg	lb (kg)
8FGU25 / 8FDU25											
Wide Visible (V)	80 (2040)	58.9 (1495)	104.7 (2660)	128.3 (3260)	6.1 (155)	6.1 (155)	6 / 11	5000 (2250)	5000 (2250)	6 / 11	5000 (2250)
	119.5 (3040)	78.5 (1995)	144.1 (3660)	167.7 (4260)	6.1 (155)	6.1 (155)	6 / 11	5000 (2250)	5000 (2250)	6 / 11	5000 (2250)
	131.5 (3340)	84.5 (2145)	155.9 (3960)	179.5 (4560)	6.1 (155)	6.1 (155)	6 / 11	5000 (2250)	5000 (2250)	6 / 11	5000 (2250)
	139 (3540)	88.4 (2245)	163.8 (4160)	187.4 (4760)	6.1 (155)	6.1 (155)	6 / 11	5000 (2250)	5000 (2250)	6 / 11	5000 (2250)
	147 (3740)	94.7 (2405)	171.7 (4360)	195.3 (4960)	6.1 (155)	6.1 (155)	6 / 11	5000 (2250)	5000 (2250)	6 / 11	5000 (2250)
	159 (4040)	102.2 (2595)	183.5 (4660)	207.1 (5260)	6.1 (155)	6.1 (155)	6 / 11	5000 (2250)	5000 (2250)	6 / 11	5000 (2250)
Full Free-Lift 2-Stage (FV)	119.5 (3040)	78.5 (1995)	143.5 (3645)	167.7 (4260)	55.1 (1400)	30.5 (775)	6 / 11	5000 (2250)	5000 (2250)	6 / 11	5000 (2250)
	131.5 (3340)	84.5 (2145)	151.4 (3845)	179.5 (4560)	61 (1550)	36.4 (925)	6 / 11	5000 (2250)	5000 (2250)	6 / 11	5000 (2250)
	139 (3540)	88.4 (2245)	163.2 (4145)	187.4 (4760)	65 (1650)	40.4 (1025)	6 / 11	5000 (2250)	5000 (2250)	6 / 11	5000 (2250)
Full Free-Lift 3-Stage (FSV)	159 (4040)	74.6 (1895)	181.5 (4610)	206.7 (5250)	52.4 (1330)	26.6 (675)	6 / 6	5000 (2250)	5000 (2250)	6 / 6	5000 (2250)
	170.5 (4340)	78.5 (1995)	193.3 (4910)	218.5 (5550)	56.3 (1430)	30.5 (775)	6 / 6	5000 (2250)	5000 (2250)	6 / 6	5000 (2250)
	189 (4800)	84.5 (2145)	211.4 (5370)	236.6 (6010)	62.2 (1580)	36.4 (915)	6 / 6	3950 (1800)	4850 (2200)	6 / 6	4950 (2250)
	198 (5040)	88.4 (2245)	220.9 (5610)	246.1 (6250)	66.1 (1680)	40.4 (1015)	6 / 6	3550 (1600)	4500 (2050)	6 / 6	4850 (2200)
	218 (5540)	94.7 (2405)	240.6 (6110)	265.7 (6750)	72.4 (1840)	46.7 (1185)	6 / 6	2850 (1300)	3850 (1750)	6 / 6	4500 (2050)
	237.5 (6040)	102.2 (2595)	260.2 (6610)	285.4 (7250)	79.9 (2030)	54.2 (1375)	6 / 6	2000 (900)	2550 (1150)	6 / 6	3500 (1600)
	257.5 (6540)	112 (2845)	279.9 (7110)	305.1 (7750)	89.8 (2280)	64 (1625)	—	—	—	6 / 6	3200 (1450)
	277 (7040)	121.9 (3095)	299.6 (7610)	324.8 (8250)	99.6 (2530)	73.9 (1875)	—	—	—	6 / 6	2500 (1150)
Full Free-Lift 4-Stage (QFV)	240 (6100)	84.8 (2155)	263.4 (6690)	289.4 (7350)	61 (1550)	35 (895)	6 / 3	—	3800 (1720)	6 / 3	—
	258 (6600)	90.7 (2305)	281.5 (7150)	307.5 (7810)	67 (1700)	41 (1045)	6 / 3	—	—	6 / 3	—

¹ Height of standard load backrest is 48" (1220 mm).
Wide tread standard for all models with a 189" & higher FSV mast. Wide tread deduct option (GDOF) will configure back to narrow tread.
High-lift SAS active mast functions not available on 80V mast.
Must have Dual Drive Tires (F00C) at extra cost for 258 FSV, 277 FSV.
Please contact your local, authorized Toyota Dealer for a complete list of available options.

MAST SPECIFICATIONS

MAST TYPE	MAXIMUM FORK HEIGHT (TOP OF FORKS)	OVERALL HEIGHT			FREE-LIFT		SINGLE TIRE			DUAL TIRE	
		LOWERED	EXTENDED		WITHOUT LOAD BACKREST	WITH STANDARD LOAD BACKREST¹	TILT RANGE	LOAD CAPACITY AT 24 IN. (610 MM) LOAD CENTER		TILT RANGE	LOAD CAPACITY AT 24 IN. (610 MM) LOAD CENTER
			WITHOUT LOAD BACKREST	WITH STANDARD LOAD BACKREST¹				FWD / BWD	NARROW TREAD		
	in (mm)	in (mm)	in (mm)	in (mm)	in (mm)	in (mm)	deg	lb (kg)	lb (kg)	deg	lb (kg)
8FGU30 / 8FDU30											
Wide Visible (V)	80.5 (2045)	59.6 (1515)	108.3 (2750)	128.5 (3265)	5.3 (135)	5.3 (135)	6 / 11	6000 (2700)	6000 (2700)	6 / 11	6000 (2700)
	119.5 (3045)	79.3 (2015)	147.6 (3750)	167.9 (4265)	5.3 (135)	5.3 (135)	6 / 11	6000 (2700)	6000 (2700)	6 / 11	6000 (2700)
	131.5 (3345)	85 (2165)	159.4 (4050)	179.7 (4565)	5.3 (135)	5.3 (135)	6 / 11	6000 (2700)	6000 (2700)	6 / 11	6000 (2700)
	139.5 (3545)	89.2 (2265)	167.3 (4250)	187.6 (4765)	5.3 (135)	5.3 (135)	6 / 11	6000 (2700)	6000 (2700)	6 / 11	6000 (2700)
	147 (3745)	95.5 (2425)	175.2 (4450)	195.5 (4965)	5.3 (135)	5.3 (135)	6 / 11	6000 (2700)	6000 (2700)	6 / 11	6000 (2700)
	159 (4045)	103 (2615)	187 (4750)	207.3 (5265)	5.3 (135)	5.3 (135)	6 / 11	6000 (2700)	6000 (2700)	6 / 11	6000 (2700)
Full Free-Lift 2-Stage (FV)	119.5 (3045)	79.3 (2015)	144.1 (3660)	167.9 (4265)	55.1 (1400)	31.3 (795)	6 / 11	6000 (2700)	6000 (2700)	6 / 11	6000 (2700)
	131.5 (3345)	85.0 (2165)	155.9 (3960)	179.7 (4565)	61 (1550)	37.2 (945)	6 / 11	6000 (2700)	6000 (2700)	6 / 11	6000 (2700)
	139.5 (3545)	89.2 (2265)	163.8 (4160)	187.6 (4765)	65 (1650)	41.2 (1045)	6 / 11	6000 (2700)	6000 (2700)	6 / 11	6000 (2700)
Full Free-Lift 3-Stage (FSV)	159 (4045)	79.3 (2015)	183.5 (4660)	207.3 (5265)	55.1 (1400)	31.3 (795)	6 / 6	6000 (2750)	6000 (2750)	6 / 6	6000 (2750)
	171 (4345)	85.2 (2165)	195.3 (4960)	219.1 (5565)	61 (1550)	37.2 (945)	6 / 6	6000 (2750)	6000 (2750)	6 / 6	6000 (2750)
	187 (4750)	89.2 (2265)	211.0 (5360)	235 (5970)	65 (1650)	41.2 (1045)	6 / 6	6000 (2750)	6000 (2750)	6 / 6	6000 (2750)
	198.5 (5045)	95.5 (2425)	222.8 (5660)	246.7 (6265)	71.3 (1810)	47.5 (1205)	6 / 6	5600 (2550)	5800 (2650)	6 / 6	6000 (2700)
	218 (5545)	103 (2615)	242.5 (6160)	266.3 (6765)	78.7 (2000)	55 (1395)	6 / 6	4200 (1900)	5300 (2400)	6 / 6	5600 (2550)
	237.5 (6045)	112.8 (2865)	262.2 (6660)	286 (7265)	88.6 (2250)	64.8 (1645)	6 / 6	3100 (1400)	3500 (1600)	6 / 6	4300 (1950)
	257.5 (6545)	122.6 (3115)	281.9 (7160)	305.7 (7765)	98.4 (2500)	74.6 (1895)	—	—	—	6 / 6	3500 (1600)
	277 (7045)	132.5 (3365)	301.6 (7660)	325.4 (8265)	108.3 (2750)	84.5 (2145)	—	—	—	6 / 6	2600 (1200)
Full Free-Lift 4-Stage (QFV)	240 (6100)	84.8 (2155)	263.4 (6690)	289.4 (7350)	61 (1550)	35 (895)	6 / 3	—	4900 (2220)	6 / 3	—
	258 (6600)	90.7 (2305)	281.5 (7150)	307.5 (7810)	67 (1700)	41 (1045)	6 / 3	—	—	6 / 3	—

MAST TYPE	MAXIMUM FORK HEIGHT (TOP OF FORKS)	OVERALL HEIGHT			FREE-LIFT		SINGLE TIRE			DUAL TIRE	
		LOWERED	EXTENDED		WITHOUT LOAD BACKREST	WITH STANDARD LOAD BACKREST¹	TILT RANGE	LOAD CAPACITY AT 24 IN. (610 MM) LOAD CENTER		TILT RANGE	LOAD CAPACITY AT 24 IN. (610 MM) LOAD CENTER
			WITHOUT LOAD BACKREST	WITH STANDARD LOAD BACKREST¹				FWD / BWD	NARROW TREAD		
	in (mm)	in (mm)	in (mm)	in (mm)	in (mm)	in (mm)	deg	lb (kg)	lb (kg)	deg	lb (kg)
8FGU32 / 8FDU32											
Wide Visible (V)	80.5 (2045)	59.6 (1515)	108.3 (2750)	128.5 (3265)	5.3 (135)	5.3 (135)	6 / 11	6500 (3000)	6500 (3000)	6 / 11	6500 (3000)
	119.5 (3045)	79.3 (2015)	147.6 (3750)	167.9 (4265)	5.3 (135)	5.3 (135)	6 / 11	6500 (3000)	6500 (3000)	6 / 11	6500 (3000)
	131.5 (3345)	85 (2165)	159.4 (4050)	179.7 (4565)	5.3 (135)	5.3 (135)	6 / 11	6500 (3000)	6500 (3000)	6 / 11	6500 (3000)
	139.5 (3545)	89.2 (2265)	167.3 (4250)	187.6 (4765)	5.3 (135)	5.3 (135)	6 / 11	6500 (3000)	6500 (3000)	6 / 11	6500 (3000)
	147 (3745)	95.5 (2425)	175.2 (4450)	195.5 (4965)	5.3 (135)	5.3 (135)	6 / 11	6500 (3000)	6500 (3000)	6 / 11	6500 (3000)
	159 (4045)	103 (2615)	187 (4750)	207.3 (5265)	5.3 (135)	5.3 (135)	6 / 11	6500 (3000)	6500 (3000)	6 / 11	6500 (3000)
Full Free-Lift 2-Stage (FV)	119.5 (3045)	79.3 (2015)	149.2 (3790)	167.9 (4265)	50 (1270)	31.3 (795)	6 / 11	6500 (3000)	6500 (3000)	6 / 11	6500 (3000)
	131.5 (3345)	85.0 (2165)	161.0 (4090)	179.7 (4565)	55.9 (1420)	37.2 (945)	6 / 11	6500 (3000)	6500 (3000)	6 / 11	6500 (3000)
	139.5 (3545)	89.2 (2265)	168.3 (4290)	187.6 (4765)	59.8 (1520)	41.2 (1045)	6 / 11	6500 (3000)	6500 (3000)	6 / 11	6500 (3000)
Full Free-Lift 3-Stage (FSV)	159 (4045)	79.3 (2015)	188.6 (4790)	207.3 (5265)	50 (1270)	31.3 (795)	6 / 6	6500 (3000)	6500 (3000)	6 / 6	6500 (3000)
	171 (4345)	85.2 (2165)	200.4 (5090)	219.1 (5565)	55.9 (1420)	37.2 (945)	6 / 6	6500 (3000)	6500 (3000)	6 / 6	6500 (3000)
	187 (4750)	89.2 (2265)	216.1 (5490)	235 (5970)	59.8 (1520)	41.2 (1045)	6 / 6	6500 (3000)	6500 (3000)	6 / 6	6500 (3000)
	198.5 (5045)	95.5 (2425)	228.0 (5790)	246.7 (6265)	66.1 (1680)	47.5 (1205)	6 / 6	5750 (2600)	6400 (2900)	6 / 6	6500 (2950)
	218 (5545)	103 (2615)	247.6 (6290)	266.3 (6765)	73.6 (1870)	55 (1395)	6 / 6	4200 (1900)	5500 (2500)	6 / 6	5800 (2650)
	237.5 (6045)	112.8 (2865)	267.3 (6790)	286 (7265)	83.5 (2120)	64.8 (1645)	6 / 6	3300 (1500)	4000 (1800)	6 / 6	4500 (2050)
	257.5 (6545)	122.6 (3115)	287.0 (7290)	305.7 (7765)	93.3 (2370)	74.6 (1895)	—	—	—	6 / 6	3500 (1600)
	277 (7045)	132.5 (3365)	306.7 (7790)	325.4 (8265)	103.1 (2620)	84.5 (2145)	—	—	—	6 / 6	2300 (1050)
Full Free-Lift 4-Stage (QFV)	240 (6100)	84.8 (2155)	263.4 (6690)	289.4 (7350)	61 (1550)	35 (895)	6 / 3	—	3800 (1720)	6 / 3	—
	258 (6600)	90.7 (2305)	281.5 (7150)	307.5 (7810)	67 (1700)	40 (1010)	6 / 3	—	3200 (1450)	6 / 3	—

1 Height of standard load backrest is 48" (1220 mm).
High-lift SAS active mast functions not available on 80V mast.
Must have Dual Drive Tires (FOOC) at extra cost for 258 FSV, 277 FSV.
Please contact your local, authorized Toyota Dealer for a complete list of available options.

H3 series

HIGH EFFICIENCY
ENERGY SAVING

4000-7000lbs

**H3 series Internal Combustion
Counterbalanced Forklift Truck**



HELI
LIFTING THE FUTURE

TOP 10 FORKLIFT MANUFACTURER
IN THE WORLD

4000-7000lbs

H3 series Internal Combustion Counterbalanced Forklift Truck

Manufacturer and technical parameters

Characteristic							
1.01	manufacturer	HELI					
1.02	Model			CPCD20/ CP(Q)(Y)D20	CPCD25/ CP(Q)(Y)D25	CPCD30/ CP(Q)(Y)D30	CPCD35/ CP(Q)(Y)D35
1.03	Rated Capacity		lbs	4000	5000	6000	7000
1.04	Load Centre		in	20			
1.05	Operation Type	Seat-type					
	Dimension Parameter						
2.01	Max.Lifting Height(without backrest)	H	in	118.2	118.2	118.2	118.2
2.02	Overall Lowered Height	H1	in	78.8	78.8	81.4	85.9
2.03	Max.Lifting Height(with backrest)	H2	in	158.8	158.8	167.3	166.9
2.04	Free Lifting Height	H3	in	6.5	6.5	6.3	6.7
2.05	Overall Height(to overhead guard)	H4	in	84.7	84.7	85.5	85.5
2.06	Min.Ground Clearance(under mast)	H5	in	4.5	4.5	5.3	5.3
2.07	Overhead guard clearance(from seat face)	H6	in	40.6	40.6	40.6	40.6
2.08	Tow Pin Height	H9	in	10.8	10.8	11	11
2.09	Backrest Height(From the surface of the fork)	H13	in	39.4	39.4	48.3	48.1
2.10	Overall Length(without/with Forks)	(L/L')	in	137.9/101.7	146.1/103.9	150.4/108.3	151.1/109
2.11	Wheelbase	L1	in	65	65	67	67
2.12	Front Overhang	L2	in	18.6	18.6	18.8	19.5
2.13	Rear Overhang	L3	in	18	20.3	22.5	22.5
2.14	Overall Width	W1	in	45.3	45.3	48.3	48.3
2.15	Tread(Front Tread/Rear Tread)	(W3/W2)	in	38.2/38.2	38.2/38.2	39.4/38.2	39.4/38.2
2.16	Lateral Fork Adjustment(Outside of Forks)	W5	in	40.6/9.6	40.6/9.6	41.8/9.9	41.8/9.9
2.17	Min.Turning Radius Outside	r	in	85.5	88.3	94.6	95.3
2.18	Min.Ground Clearance(wheelbase centre)	r'	in	7.1	7.1	7.9	7.9
2.19	Min, Right Angle Stacking Aside Width	Ra	in	86.7	89.8	93.8	94.6
2.20	Mast Tilt(fwd/bwd)	α / β	deg	6/12	6/12	6/12	6/12
2.21	Fork Dimensions (Length*Width*Thicknes)	L4×W×T	in	36*4.8*1.6	42*4.8*1.6	42*4.9*1.8	42*4.9*2.0
Weights							
3.01	Standard Truck Weight Unload		lbs	7540	8377	9634	10582
3.02	Weight Distribution Rated Load(front/rear)		lbs	10516/1433	12081/1808	14242/2006	16468/1830
3.03	Weight Distribution Unload(front/rear)		lbs	3527/4013	3439/4938	3770/5864	4145/6437
Wheels&Tires							
4.01	Wheel Number(x=driven wheel),front/rear	2X/2					
4.02	Tire Type,front/rear	Pnuematic Tire					
4.03	Tire Size			7.00-12-12PR / 6.00-9-10PR	7.00-12-12PR / 6.00-9-10PR	28×9-15-12PR / 6.50-10-10PR	28×9-15-14PR / 6.50-10-10PR
4.04	Service Brake	Hydraulic-Foot Pedal					
4.05	Parking Brake	Mechanical-Hand Lever					

Performance

Model		CPCD20	CPCD25	CPCD30	CPCD35	CF
Max.Drawbar pull(Load/unload)	lb	3600/2588	3713/2588	4275/3263	4725/3263	3
Max.Gradeability(Load/Unload)	%	20/20	20/20	23/20	21/20	
Max.Traveling Speed(Load/Unload)	mph	10.6/11.8	10.6/11.8	11.8/12.4	11.8/11.8	
Lifting Speed(Load/unload)	ft/min	110/118	110/118	98.5/108	78.8/82.7	
Lowing Speed(Load/unload)	ft/min	88.7/98.5	88.7/98.5	88.7/108	69/78.8	8
Engine and Gearbox						
Engine Manufacturer/Model		KUBOTA V2403				
Rated Power	hp/rpm	45.7/2400				
Rated Torque	lb.ft/rpm	115.1/1800				
Cyl. Number-bore*stroke		4-87x102.4				
Displacement	L	2.434				
Engine Type		Diesel				
Emission		EuroIIIA/EPA T4I				
Battery Capacity	V/Ah	12/80				
Fuel Tank Capacity	L					
Number of speed(fwd/bwd)						

Wide view Full Free 2-stage mast

Mast type	Max. lifting height (in)	Loading capacity (lbs)- loading center 20 inch				Mast Overall Height (in)- fork to the ground			Free Lifting Height (in)- with backrest			Service weight				Mast tilt angle (Fwd/Bwd) deg
		CPCD20/ CPQ(Y)D20	CPCD25/ CPQ(Y)D25	CPCD30/ CPQ(Y)D30	CPCD35/ CPQ(Y)D35	2-2.5t	3t	3.5t	2-2.5t	3t	3.5t	CPCD20/ CPQ(Y)D20	CPCD25/ CPQ(Y)D25	CPCD30/ CPQ(Y)D30	CPCD35/ CPQ(Y)D35	
ZM200	79	4000	5000	6000	7000	59	62	66	20	13	18	7650	8488	9546	10516	6/12
ZM250	99	4000	5000	6000	7000	69	72	76	29	23	28	7749	8587	9634	10626	6/12
ZM300	118	4000	5000	6000	7000	79	82	86	39	33	38	7859	8697	9744	10736	6/12
ZM330	130	4000	5000	6000	7000	85	87	92	45	39	43	7926	8763	9799	10792	6/12
ZM350	138	4000	5000	6000	7000	88	91	96	49	43	48	7970	8807	9844	10836	6/6
ZM370	146	4000	5000	6000	7000	92	95	100	54	47	52	8016	8851	9877	10880	6/6
ZM400	158	4000	5000	6000	7000	100	103	108	61	55	59	8168	9006	10031	11023	6/6
ZM425	168	3800	4500	5700	6400	105	108	112	66	60	64	8223	9061	10086	11078	6/6
ZM450	177	3600	4200	5500	6000	110	113	117	71	65	69	8278	9116	10130	11133	6/6
ZM500	197	3200	3300	4800	5000	120	123	127	81	75	79	8389	9226	10229	11243	3/6
ZM550	217	3200	3900	4900	5000	132	135	139	92	86	91	8576	9414	10648	11673	3/6
ZM600	236	3000	3600	4400	4600	134	145	149	102	96	101	8675	9513	10747	11795	3/6

Note:(1) *stands for the rated capacity when the front tire is double-tire.

(2) When the front tire of the 4000-7000lbs truck is double tire, the service weight of the truck is the weight in the table plus 242lbs.

(3) The free lifting height (without backrest) of the 2000-3500lbs truck is the height (with backrest) in the table plus 16.9inch. The free lifting height (without backrest) of the 4000-5000lbs truck is the height (with backrest) in the table plus 18.1inch. The free lifting height (without backrest) of the 6000lbs truck is the height (with backrest) in the table plus 23.2inch. The free lifting height (without backrest) of the 7000lbs truck is the height (with backrest) in the table plus 20.6inch.

CP(Q)(Y)D20	CP(Q)(Y)D25	CP(Q)(Y)D30	CP(Q)(Y)D35	CP(Q)(Y)D20	CP(Q)(Y)D25	CP(Q)(Y)D30	CP(Q)(Y)D35
3375/2363	3375/2363	3825/3038	4050/3038	3600/2363	3713/2363	4050/3038	4500/3038
31/22	31/22	23/20	18/21	23/12	23/12	22/13	21/20
11.2/11.8	11.2/11.8	11.8/11.8	11.8/11.8	11.8/12.4	11.8/12.4	11.8/12.4	11.8/12.4
98.5/108	98.5/108	35.5/106	80.8/88.7	112/122	112/122	94.6/106	460/490
88.7/98.5	88.7/98.5	88.7/108	69/78.8	88.7/98.5	88.7/98.5	88.7/108	69/78.8

Mitsubishi 4G64(PSI)

GM3.0

GAS:64.3/2700,LPG:61.6/2700

67/2700

GAS:125.5/2400,LPG:124/1600

150/1800

4-86.5x100

4-102x91.5

2.351

3

GAS/LPG

GAS/LPG

Tier IV

Tier IV

12/60

12/80

60

1-1 Power Shift T/M/ 2-2 Manual Shift T/M

Wide view Full Free 3-stage mast

Mast type	Max. lifting height (in)	Loading capacity (lbs)- loading center 20 inch				Mast Overall Height (in)- fork to the ground			Free Lifting Height (in)- with backrest			Service weight				Mast tilt angle (Fwd/Bwd) deg
		CPCD20/ CP(Q)(Y)D20	CPCD25/ CP(Q)(Y)D25	CPCD30/ CP(Q)(Y)D30	CPCD35/ CP(Q)(Y)D35	2-2.5t	3t	3.5t	2-2.5t	3t	3.5t	CPCD20/ CP(Q)(Y)D20	CPCD25/ CP(Q)(Y)D25	CPCD30/ CP(Q)(Y)D30	CPCD35/ CP(Q)(Y)D35	
ZSM360	142	4000	4800	5800	6600	71	77	77	31	28	28	8190	9028	10163	10858	6/6
ZSM400	158	3800	4800	5800	6600	76	81	81	36	33	33	8256	9094	10229	10924	6/6
ZSM435	171	3700	4400	5600	5800	81	86	86	41	38	38	8322	9160	10284	10979	6/6
ZSM450	177	3600	4300	5400	5600	83	88	88	43	40	40	8344	9182	10318	11012	6/6
ZSM470	185	3400	4000	5200	5200	85	88	88	46	40	40	8377	9215	10362	11056	6/6
ZSM480	189	3400	3900	5000	5200	86	92	92	47	44	44	8389	9226	10406	11078	6/6
ZSM500	197	3500	4200	5300	5700	90	96	96	51	47	48	8444	9281	10461	11155	6/6
ZSM540	213	3400	4300	5400	5400	95	101	101	56	52	53	8510	9348	10527	11221	3/6
ZSM600	236	3200	3600	4200	4400	104	110	110	65	61	61	8686	9524	10725	11420	3/6

Note:(1) *stands for the rated capacity when the front tire is double-tire.

(2) When the front tyre of the 4000-7000lbs truck is double tyre, the service weight of the truck is the weight in the table plus 242lbs.

(3) The free lifting height (without backrest) of the 2000-3500lbs truck is the height (with backrest) in the table plus 19.5inch. The free lifting height (without backrest) of the 4000-5000lbs truck is the height (with backrest) in the table plus 17.8 inch. The free lifting height (without backrest) of the 6000lbs truck is the height (with backrest) in the table plus 22.9inch. The free lifting height (without backrest) of the 7000lbs truck is the height (with backrest) in the table plus 19.2inch.

CP(Q)(Y)D20	CP(Q)(Y)D25	CP(Q)(Y)D30	CP(Q)(Y)D35	CP(Q)(Y)D20	CP(Q)(Y)D25	CP(Q)(Y)D30	CP(Q)(Y)D35
3375/2363	3375/2363	3825/3038	4050/3038	3600/2363	3713/2363	4050/3038	4500/3038
31/22	31/22	23/20	18/21	23/12	23/12	22/13	21/20
11.2/11.8	11.2/11.8	11.8/11.8	11.8/11.8	11.8/12.4	11.8/12.4	11.8/12.4	11.8/12.4
98.5/108	98.5/108	35.5/106	80.8/88.7	112/122	112/122	94.6/106	460/490
88.7/98.5	88.7/98.5	88.7/108	69/78.8	88.7/98.5	88.7/98.5	88.7/108	69/78.8

Mitsubishi 4G64(PSt)

GM3.0

GAS:64.3/2700,LPG:61.6/2700

67/2700

GAS:125.5/2400,LPG:124/1600

150/1800

4-86.5x100

4-102x91.5

2.351

3

GAS/LPG

GAS/LPG

Tier IV

Tier IV

12/60

12/80

60

1-1 Power Shift T/M/ 2-2 Manual Shift T/M

Wide view Full Free 3-stage mast

Mast type	Max. lifting height (in)	Loading capacity (lbs)- loading center 20 inch				Mast Overall Height (in)- fork to the ground			Free Lifting Height (in)- with backrest			Service weight				Mast tilt angle (Fwd/Bwd) deg
		CPCD20/ CP(Q)(Y)D20	CPCD25/ CP(Q)(Y)D25	CPCD30/ CP(Q)(Y)D30	CPCD35/ CP(Q)(Y)D35	2-2.5t	3t	3.5t	2-2.5t	3t	3.5t	CPCD20/ CP(Q)(Y)D20	CPCD25/ CP(Q)(Y)D25	CPCD30/ CP(Q)(Y)D30	CPCD35/ CP(Q)(Y)D35	
ZSM360	142	4000	4800	5800	6600	71	77	77	31	28	28	8190	9028	10163	10858	6/6
ZSM400	158	3800	4800	5800	6600	76	81	81	36	33	33	8256	9094	10229	10924	6/6
ZSM435	171	3700	4400	5600	5800	81	86	86	41	38	38	8322	9160	10284	10979	6/6
ZSM450	177	3600	4300	5400	5600	83	88	88	43	40	40	8344	9182	10318	11012	6/6
ZSM470	185	3400	4000	5000	5200	85	88	88	46	40	40	8377	9215	10362	11056	6/6
ZSM480	189	3400	3900	4800	5000	86	92	92	47	44	44	8389	9226	10406	11078	6/6
ZSM500	197	3200	3500	4500	4700	90	96	96	51	47	48	8444	9281	10461	11155	6/6
ZSM540	213	3400	4300	5300	5500	95	101	101	56	52	53	8510	9348	10527	11221	3/6
ZSM600	236	3200	3600	4200	4400	104	110	110	65	61	61	8686	9524	10725	11420	3/6

Note:(1) *stands for the rated capacity when the front tire is double-tire.

(2) When the front tyre of the 4000-7000lbs truck is double tyre, the service weight of the truck is the weight in the table plus 242lbs.

(3) The free lifting height (without backrest) of the 2000-3500lbs truck is the height (with backrest) in the table plus 19.5inch. The free lifting height (without backrest) of the 4000-5000lbs truck is the height (with backrest) in the table plus 17.8 inch. The free lifting height (without backrest) of the 6000lbs truck is the height (with backrest) in the table plus 22.9inch. The free lifting height (without backrest) of the 7000lbs truck is the height (with backrest) in the table plus 19.2inch.



www.doosanlift.com

7 Series Pneumatic LP Forklifts

4,000 lb to 7,000 lb Capacity

G20N/G25N/G30N/G33N-7, G35NC-7

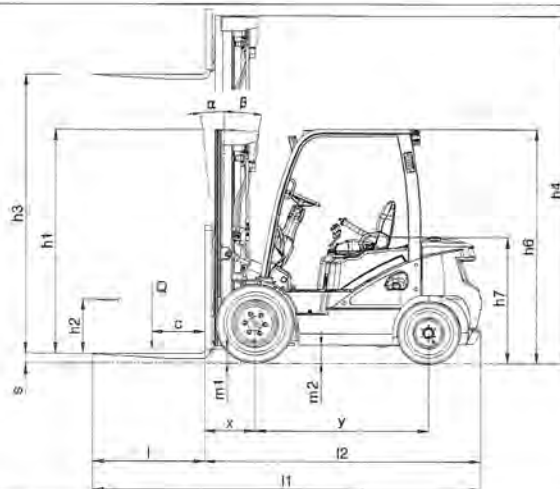
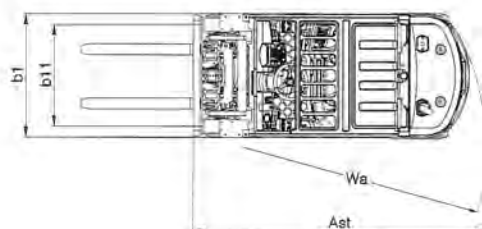


Building your tomorrow today

Technical Specifications

Characteristics	1.1	Manufacturer			Doosan	Doosan	Doosan	Doosan	Doosan
	1.2	Model designation			G20N-7	G25N-7	G30N-7	G33N-7	G35NC-7
	1.3	Drive: Diesel, Gasoline, LP			LP	LP	LP	LP	LP
	1.4	Operator type			Seated	Seated	Seated	Seated	Seated
	1.5	Load Capacity	Q	lb(kg)	4,000 (2,000)	5,000 (2,500)	6,000 (3,000)	6,500 (3,250)	7,000 (3,500)
	1.6	Load Center	c	in(mm)	24 (500)	24 (500)	24 (500)	24 (500)	24 (500)
	1.8	Load Distance: Center of Driveaxle to fork	x	in(mm)	18.9 (480)	18.9 (480)	19.1 (485)	19.1 (485)	19.5 (495)
	1.9	Wheelbase	y	in(mm)	64.0 (1625)	64.0 (1625)	66.9 (1700)	66.9 (1700)	66.9 (1700)
	2.1	Service weight		lb(kg)	8,015 (3,635)	8,840 (4,010)	9,945 (4,510)	10,395 (4,715)	10,585 (4,800)
Weight	2.2	Axle Loading, Laden Front/Rear		lb(kg)	10,835/1,590 (4,915/720)	12,445/1,905 (5,645/865)	14,385/2,130 (6,525/965)	15,275/2,280 (6,930/1,035)	16,160/2,135 (7,330/970)
	2.3	Axle Loading, Unladen Front/Rear		lb(kg)	3,805/4,210 (1,725/1,910)	3,615/5,225 (1,640/2,370)	4,080/5,865 (1,850/2,660)	4,000/6,395 (1,815/2,900)	3,970/6,615 (1,800/3,000)
Tires	3.1	Tires: pneumatic (P), cushion (C)			P	P	P	P	P
	3.2	Tire size, Front			7.00X15-12	7.00X15-12	28X9X15-12	28X9X15-12	250X15-18
	3.3	Tire size, Rear			6.50X10-10	6.50X10-10	6.50X10-10	6.50X10-12	6.50X10-12
	3.5	Wheels, number F/R (x = driven wheels)			2X/2	2X/2	2X/2	2X/2	2X/2
	3.6	Tread, Front	b11	in(mm)	38.4 (975)	38.4 (975)	38.7 (982)	38.7 (982)	40.4 (1,026)
Dimensions	3.7	Tread, Rear	b12	in(mm)	39.37 (1,000)	39.37 (1,000)	39.37 (1,000)	39.37 (1,000)	39.37 (1,000)
	4.1	Tilt of Mast/Fork carriage Forward/Backward	a/β	°	6/10	6/10	6/10	6/10	6/10
	4.2	Height, Mast lowered	h1	in(mm)	85.6 (2,175)	85.6 (2,175)	85.2 (2,165)	85.2 (2,165)	85.2 (2,165)
	4.3	Free Lift	h2	in(mm)	5.98 (152)	5.98 (152)	5.98 (152)	5.98 (152)	5.98 (152)
	4.4	Lift	h3	in(mm)	127 (3,230)	127 (3,230)	127 (3,230)	127 (3,230)	118 (3,000)
	4.5	Height, Mast Extended	h4	in(mm)	177 (4,490)	177 (4,490)	177 (4,490)	177 (4,490)	168 (4,260)
	4.7	Height of Overhead Guard (Cabin)	h6	in(mm)	85.9 (2,183)	85.9 (2,183)	85.9 (2,183)	85.9 (2,183)	85.9 (2,183)
	4.8	Height of Seat	h7	in(mm)	40.4 (1,026)	40.4 (1,026)	40.4 (1,026)	40.4 (1,026)	40.4 (1,026)
	4.19	Overall Length	l1	in(mm)	140 (3,565)	143 (3,630)	147 (3,744)	149 (3,774)	150 (3,809)
	4.20	Length to Forkface	l2	in(mm)	99.6 (2,530)	102 (2,595)	106 (2,700)	107 (2,730)	109 (2,765)
	4.21	Overall Width	b1/b2	in(mm)	46.1 (1,170)	46.1 (1,170)	47.1 (1,197)	47.1 (1,197)	48.2 (1,255)
	4.22	Fork Dimensions	s/e/l	in(mm)	1.57X3.94X41.3 (40X100X1,050)	1.57X3.94X41.3 (40X100X1,050)	1.77X4.92X41.3 (45X125X1,050)	1.77X4.92X41.3 (45X125X1,050)	1.77X4.92X41.3 (45X125X1,050)
	4.23	Fork carriage ISO 2328, class/type A,B			II/A	II/A	III/A	III/A	III/A
	4.24	Fork carriage width	b3	in(mm)	43.4 (1,103)	43.4 (1,103)	43.9 (1,115)	43.9 (1,115)	43.9 (1,115)
	4.31	Ground Clearance, loaded, below mast	m1	in(mm)	4.53 (115)	4.53 (115)	4.13 (105)	4.13 (105)	4.13 (105)
	4.32	Ground Clearance, center of wheelbase	m2	in(mm)	5.63 (143)	5.63 (143)	5.63 (143)	5.63 (143)	5.63 (143)
	4.34.1	Aisle 90 degree stacking	Ast	in(mm)	154 (3,905)	155.5 (3,950)	159.5 (4,050)	160.5 (4,080)	162 (4,115)
	4.35	Turning Radius	Wa	in(mm)	87.4 (2,220)	89.2 (2,265)	93.1 (2,365)	94.3 (2,395)	95.3 (2,420)
	4.36	Internal Turning Radius	b13	in(mm)	30.5 (775)	30.5 (775)	30.6 (761)	30.6 (761)	30.6 (761)
Performance	5.1	Travel Speed, Loaded/Unloaded		mph (km/h)	12/12.5 (19/20)	12/12.5 (19/20)	11/12 (18/19)	11/12 (18/19)	11/12 (18/19)
	5.2	Lift Speed, Loaded/Unloaded		fpm(m/s)	108/112 (0.55/0.57)	105/112 (0.54/0.57)	102/112 (0.52/0.57)	105/116 (0.54/0.59)	104/116 (0.53/0.59)
	5.3	Lowering Speed, Loaded/Unloaded		fpm(m/s)	100/90 (0.51/0.46)	100/90 (0.51/0.46)	100/90 (0.51/0.46)	100/90 (0.51/0.46)	100/90 (0.51/0.46)
	5.5	Drawbar pull, L/U (@ 1.6km/h)		lb(N)	4,155/4,090 (18,480/18,195)	4,105/4,075 (18,265/18,125)	4,280/4,225 (19,035/18,795)	4,255/4,215 (18,935/18,750)	4,135/4,075 (18,385/18,140)
	5.6	Max. Drawbar pull, Loaded/Unloaded		lb(N)	4,740/4,620 (21,075/20,560)	4,690/4,610 (20,860/20,500)	4,935/4,810 (21,950/21,400)	4,910/4,800 (21,850/21,355)	4,755/4,625 (21,160/20,570)
	5.7	Gradeability, L/U (@ 1.6km/h)		%	36/-	30.5/-	27.5/-	25.5/-	23.5/-
	5.8	Max. Gradeability, Loaded/Unloaded		%	42/-	35/-	32/-	30/-	27/-
	5.10	Service/Parking Brake			foot/hydraulic	foot/hydraulic	foot/hydraulic	foot/hydraulic	foot/hydraulic
Engine	7.1	Engine Manufacturer/Model			GCT/K25	GCT/K25	GCT/K25	GCT/K25	GCT/K25
	7.2	Engine power (DIN ISO1585)		hp(kW)	62.7(46.8)	62.7(46.8)	62.7(46.8)	62.7(46.8)	62.7(46.8)
	7.3	Rated Speed		rpm	2,600	2,600	2,600	2,600	2,600
	7.3.1	Torque at 1,700 1/min		ft•lbs(N•m)	140(190)	140(190)	140(190)	140(190)	140(190)
	7.4	Number of Cylinders/Displacement		cc	4/2,488	4/2,488	4/2,488	4/2,488	4/2,488
Add. Info	7.1	Battery Voltage/normal capacity		V/Ah	12/50	12/50	12/50	12/50	12/50
	10.1	Operating pressure for attachments		psi(bar)	2,260 (156)	2,260 (156)	2,260 (156)	2,260 (156)	2,260 (156)
	10.2	Oil volume for attachments		gpm(l/min)	15.9 (60)	15.9 (60)	15.9 (60)	15.9 (60)	15.9 (60)
	10.4	Fuel Tank Capacity		gal(l)	13.8 (51)	13.8 (51)	13.8 (51)	13.8 (51)	13.8 (51)
	10.7	Sound level at th driver's ear		dB(A)	84	84	84	84	84

Dimensional Drawing



Mast Specification and Rated Capacities

G20N-7

Mast type	Maximum Fork Height	Maximum Lowered Height	Fully Extended Height	Free Lift	Rated Load Capacities											
					G20N-7											
			With Load Backrest	With Load Backrest	Tilt Angle						Load Capacities					
					Single Pneu.		Double Pneu		Single Solid		Single Pneu.		Double Pneu		Single Solid	
					FWD	BWD	FWD	BWD	FWD	BWD	LC 500mm	LC 24in	LC 500mm	LC 24in	LC 500mm	LC 24in
	in	in	in	in	deg	deg	deg	deg	deg	deg	kg	lb	kg	lb	kg	lb
STD	80	62	177	6	6	10	6	10	6	10	2,000	4,000	2,000	4,000	2,000	4,000
	102	73	188	6	6	10	6	10	6	10	2,000	4,000	2,000	4,000	2,000	4,000
	116	80	199	6	6	10	6	10	6	10	2,000	4,000	2,000	4,000	2,000	4,000
	127	86	205	6	6	10	6	10	6	10	2,000	4,000	2,000	4,000	2,000	4,000
	138	95	221	6	6	10	6	10	6	10	2,000	4,000	2,000	4,000	2,000	4,000
	150	101	245	25	6	10	6	10	6	10	2,000	4,000	2,000	4,000	2,000	4,000
	156	104	151	33	6	10	6	10	6	10	2,000	4,000	2,000	4,000	2,000	4,000
	171	112	166	38	6	10	6	10	6	10	2,000	4,000	2,000	4,000	2,000	4,000
195	124	177	48	6	5	6	10	6	10	1,900	3,750	1,925	3,900	1,975	4,000	
FF	102	73	151	25	6	10	6	10	6	10	2,000	4,000	2,000	4,000	2,000	4,000
	116	80	166	33	6	10	6	10	6	10	2,000	4,000	2,000	4,000	2,000	4,000
	127	86	177	38	6	10	6	10	6	10	2,000	4,000	2,000	4,000	2,000	4,000
	142	95	192	48	6	10	6	10	6	10	2,000	4,000	2,000	4,000	2,000	4,000
FFT	154	74	203	26	6	8	6	8	6	8	2,000	4,000	2,000	4,000	2,000	4,000
	169	79	219	32	6	8	6	8	6	8	2,000	4,000	2,000	4,000	2,000	4,000
	186	85	236	37	6	8	6	8	6	8	1,950	3,950	1,950	3,950	2,000	4,000
	219	98	268	51	6	5	6	8	6	8	1,950	3,950	1,925	3,950	2,000	4,000
	237	104	286	57	6	3	6	8	6	8	1,650	3,650	1,825	3,700	1,875	3,850
	256	114	306	66	6	3	6	8	6	5	1,300	2,900	1,750	3,550	1,825	3,700

G30N-7

Mast type	Maximum Fork Height	Maximum Lowered Height	Fully Extended Height	Free Lift	Rated Load Capacities											
					G30N-7											
					Tilt Angle						Load Capacities					
					Single Pneu.		Double Pneu		Single Solid		Single Pneu.		Double Pneu		Single Solid	
			With Load Backrest	With Load Backrest	FWD	BWD	FWD	BWD	FWD	BWD	LC 500mm	LC 24in	LC 500mm	LC 24in	LC 500mm	LC 24in
	in	in	in	in	deg	deg	deg	deg	deg	deg	kg	lb	kg	lb	kg	lb
STD	80	62	130	6	6	10	6	10	6	10	3,000	6,000	3,000	6,000	3,000	6,000
	102	72	151	6	6	10	6	10	6	10	3,000	6,000	3,000	6,000	3,000	6,000
	116	80	166	6	6	10	6	10	6	10	3,000	6,000	3,000	6,000	3,000	6,000
	127	85	177	6	6	10	6	10	6	10	3,000	6,000	3,000	6,000	3,000	6,000
	138	95	188	6	6	10	6	10	6	10	3,000	6,000	3,000	6,000	3,000	6,000
	150	101	199	6	6	10	6	10	6	10	3,000	6,000	3,000	6,000	3,000	6,000
	156	104	205	6	6	10	6	10	6	10	3,000	6,000	3,000	6,000	3,000	6,000
	171	112	221	6	6	5	6	10	6	10	3,000	6,000	3,000	6,000	3,000	6,000
FF	195	124	245	6	6	3	6	10	6	10	2,525	5,550	2,900	5,850	2,975	6,000
	102	72	151	25	6	10	6	10	6	10	3,000	6,000	3,000	6,000	3,000	6,000
	116	80	166	32	6	10	6	10	6	10	3,000	6,000	3,000	6,000	3,000	6,000
	127	85	177	38	6	10	6	10	6	10	3,000	6,000	3,000	6,000	3,000	6,000
FFT	142	95	192	48	6	10	6	10	6	10	3,000	6,000	3,000	6,000	3,000	6,000
	154	74	203	27	6	8	6	8	6	8	2,900	6,000	2,900	6,000	2,900	6,000
	169	80	219	32	6	8	6	8	6	8	2,900	6,000	2,900	6,000	2,900	6,000
	186	85	236	38	6	3	6	8	6	8	2,900	5,950	2,900	6,000	2,900	6,000
	219	99	268	52	6	3	6	8	6	5	1,850	4,050	2,750	5,600	2,825	5,750
	237	105	286	58	6	3	6	5	6	3	1,425	3,200	2,675	5,450	2,750	5,600

G33N-7

Mast type	Maximum Fork Height	Maximum Lowered Height	Fully Extended Height	Free Lift	Rated Load Capacities											
					G33N-7											
					Tilt Angle						Load Capacities					
					Single Pneu.		Double Pneu		Single Solid		Single Pneu.		Double Pneu		Single Solid	
			With Load Backrest	With Load Backrest	FWD	BWD	FWD	BWD	FWD	BWD	LC 500mm	LC 24in	LC 500mm	LC 24in	LC 500mm	LC 24in
	in	in	in	in	deg	deg	deg	deg	deg	deg	kg	lb	kg	lb	kg	lb
STD	80	62	130	6	6	10	6	10	6	10	3,250	6,500	3,250	6,500	3,250	6,500
	102	72	151	6	6	10	6	10	6	10	3,250	6,500	3,250	6,500	3,250	6,500
	116	80	166	6	6	10	6	10	6	10	3,250	6,500	3,250	6,500	3,250	6,500
	127	85	177	6	6	10	6	10	6	10	3,250	6,500	3,250	6,500	3,250	6,500
	138	95	188	6	6	10	6	10	6	10	3,250	6,500	3,250	6,500	3,250	6,500
	150	101	199	6	6	10	6	10	6	10	3,250	6,500	3,250	6,500	3,250	6,500
	156	104	205	6	6	10	6	10	6	10	3,175	6,500	3,250	6,500	3,250	6,500
	171	112	221	6	6	5	6	10	6	10	3,175	6,500	3,250	6,500	3,250	6,500
FF	195	124	245	6	6	3	6	10	6	8	2,450	5,400	3,125	6,350	3,200	6,500
	102	72	151	25	6	10	6	10	6	10	3,250	6,500	3,250	6,500	3,250	6,500
	116	80	166	32	6	10	6	10	6	10	3,250	6,500	3,250	6,500	3,250	6,500
	127	85	177	38	6	10	6	10	6	10	3,250	6,500	3,250	6,500	3,250	6,500
FFT	142	95	192	48	6	10	6	10	6	10	3,250	6,500	3,250	6,500	3,250	6,500
	154	74	203	27	6	8	6	8	6	8	3,250	6,500	3,250	6,500	3,250	6,500
	169	80	219	32	6	8	6	8	6	8	3,250	6,500	3,250	6,500	3,250	6,500
	186	85	236	38	6	3	6	8	6	8	2,900	6,300	3,175	6,450	3,250	6,500
	219	99	268	52	6	3	6	8	6	5	1,750	3,950	2,975	6,050	3,050	6,200
	237	105	286	58	6	3	6	5	6	3	1,350	3,050	2,875	5,850	2,950	6,050

G35NC-7

Mast type	Maximum Fork Height	Maximum Lowered Height	Fully Extended Height	Free Lift	Rated Load Capacities											
					G35NC-7											
					Tilt Angle						Load Capacities					
					Single Pneu.		Double Pneu		Single Solid		Single Pneu.		Double Pneu		Single Solid	
			With Load Backrest	With Load Backrest	FWD	BWD	FWD	BWD	FWD	BWD	LC 500mm	LC 24in	LC 500mm	LC 24in	LC 500mm	LC 24in
	in	in	in	in	deg	deg	deg	deg	deg	deg	kg	lb	kg	lb	kg	lb
STD	71	62	120	6	6	10	6	10	6	10	3,500	7,000	3,500	7,000	3,500	7,000
	93	72	142	6	6	10	6	10	6	10	3,500	7,000	3,500	7,000	3,500	7,000
	107	80	157	6	6	10	6	10	6	10	3,500	7,000	3,500	7,000	3,500	7,000
	118	85	168	6	6	10	6	10	6	10	3,500	7,000	3,500	7,000	3,500	7,000
	138	95	187	6	6	10	6	10	6	10	3,500	7,000	3,500	7,000	3,500	7,000
	144	101	194	6	6	10	6	10	6	10	3,500	7,000	3,500	7,000	3,500	7,000
	150	104	199	6	6	10	6	10	6	10	3,500	7,000	3,500	7,000	3,500	7,000
	166	112	215	6	6	8	6	10	6	10	3,425	6,950	3,425	6,950	3,500	7,000
FF	189	124	239	6	6	3	6	8	6	8	3,250	6,650	3,275	6,650	3,375	6,850
	93	72	142	25	6	10	6	10	6	10	3,500	7,000	3,500	7,000	3,500	7,000
	107	80	157	32	6	10	6	10	6	10	3,500	7,000	3,500	7,000	3,500	7,000
	118	85	168	38	6	10	6	10	6	10	3,500	7,000	3,500	7,000	3,500	7,000
FFT	138	95	187	48	6	10	6	10	6	10	3,500	7,000	3,500	7,000	3,500	7,000
	140	74	190	27	6	8	6	8	6	8	3,400	7,000	3,400	7,000	3,400	7,000
	156	80	206	32	6	8	6	8	6	8	3,400	7,000	3,400	7,000	3,400	7,000
	172	85	222	38	6	5	6	8	6	8	3,375	6,850	3,375	6,850	3,400	7,000
	190	92	240	45	6	3	6	8	6	8	3,250	6,600	3,250	6,650	3,350	6,800
	205	99	255	52	6	3	6	8	6	5	2,600	5,800	3,150	6,450	3,250	6,600
	223	105	272	58	6	3	6	8	6	3	1,975	4,450	3,050	6,200	3,150	6,400

Note : Mast Specifications & Rated Capacities are based on standard chassis with pneumatic tire and without side shifter.

PSCG25N7-V1

BX50

SPECIFICATIONS



KOMATSU®



The Forklift With Proven Ability.™

PNEUMATIC TIRE FORKLIFTS

4,000 – 7,000 LBS. CAPACITY | GAS, LPG AND DIESEL

GENERAL				FG20T-16	FG20HT-16	FD20T-16	FG25T-16	FG25HT-16
Power Type				Gasoline	Gasoline	Diesel	Gasoline	Gasoline
Operation Type				Sit-Down	Sit-Down	Sit-Down	Sit-Down	Sit-Down
Capacity @ 24 in. (600 mm) load center*		lbs. (kg)		4,000 (1,810)	4,000 (1,810)	4,000 (1,810)	5,000 (2,267)	5,000 (2,267)
Load distance from center axle (2-stage)		in. (mm)		17.9 (455)	17.9 (455)	17.9 (455)	17.9 (455)	17.9 (455)
Wheelbase		in. (mm)		65 (1,650)	65 (1,650)	65 (1,650)	65 (1,650)	65 (1,650)
WEIGHT								
Service weight (includes 2-stage std. mast & forks)		lbs. (kg)		7,180 (3,255)	7,180 (3,255)	7,290 (3,310)	7,941 (3,605)	7,941 (3,605)
Axle Loading	Loaded	Front	lbs. (kg)	9,880 (4,480)	9,880 (4,480)	9,980 (4,485)	11,360 (5,155)	11,360 (5,155)
		Rear	lbs. (kg)	1,300 (590)	1,300 (590)	1,410 (640)	1,590 (720)	1,590 (720)
	Unloaded	Front	lbs. (kg)	3,270 (1,485)	3,270 (1,485)	3,280 (1,490)	3,110 (1,410)	3,110 (1,410)
		Rear	lbs. (kg)	3,900 (1,770)	3,900 (1,770)	4,010 (1,820)	4,840 (2,195)	4,840 (2,195)
TIRE								
Tire type				Pneumatic	Pneumatic	Pneumatic	Pneumatic	Pneumatic
Tire size, front				7 - 12 - 12PR	7 - 12 - 12PR	7 - 12 - 12PR	7 - 12 - 12PR	7 - 12 - 12PR
Tire size, rear				6 - 9 - 10PR	6 - 9 - 10PR	6 - 9 - 10PR	6 - 9 - 10PR	6 - 9 - 10PR
Number of wheels, front / rear		x=driven		2x / 2	2x / 2	2x / 2	2x / 2	2x / 2
Tread (center of tires)	Front	in. (mm)	38 (966)	38 (966)	38 (966)	38 (966)	38 (966)	38 (966)
	Rear	in. (mm)	37.8 (960)	37.8 (960)	37.8 (960)	37.8 (960)	37.8 (960)	37.8 (960)
DIMENSIONS								
Tilting angle, 2-stage (FV) masts, forward / backward		deg.		6 / 12	6 / 12	6 / 12	6 / 12	6 / 12
Tilting angle, 3-stage (TFV) masts, forward / backward		deg.		6 / 5	6 / 5	6 / 5	6 / 5	6 / 5
Mast height, lowered (2-stage std. mast)		in. (mm)		85.4 (2,170)	85.4 (2,170)	85.4 (2,170)	85.4 (2,170)	85.4 (2,170)
Mast height, extended (2-stage std. mast)†		in. (mm)		176 (4,470)	176 (4,470)	176 (4,470)	176 (4,470)	176 (4,470)
Maximum fork height (2-stage std. mast)**		in. (mm)		128 (3,250)	128 (3,250)	128 (3,250)	128 (3,250)	128 (3,250)
Free lift height (2-stage std. mast)		in. (mm)		5.5 (140)	5.5 (140)	5.5 (140)	5.5 (140)	5.5 (140)
Height overhead guard		in. (mm)		83.1 (2,110)	83.1 (2,110)	83.1 (2,110)	83.1 (2,110)	83.1 (2,110)
Length, with standard forks		in. (mm)		141.5 (3,595)	141.5 (3,595)	141.5 (3,595)	144.5 (3,670)	144.5 (3,670)
Length to fork face (2-stage mast)		in. (mm)		99.4 (2,525)	99.4 (2,525)	99.4 (2,525)	102.4 (2,600)	102.4 (2,600)
Overall width, at drive tires (single)		in. (mm)		45.3 (1,150)	45.3 (1,150)	45.3 (1,150)	45.3 (1,150)	45.3 (1,150)
Forks, thickness x width x length		in. (mm)		1.6 x 3.9 x 42 (40 x 100 x 1,070)	1.6 x 3.9 x 42 (40 x 100 x 1,070)	1.6 x 3.9 x 42 (40 x 100 x 1,070)	1.6 x 3.9 x 42 (40 x 100 x 1,070)	1.6 x 3.9 x 42 (40 x 100 x 1,070)
Carriage width / ITA Class		in. (mm)		40.9 (1,040) / II	40.9 (1,040) / II	40.9 (1,040) / II	40.9 (1,040) / II	40.9 (1,040) / II
Ground clearance, under mast		in. (mm)		5.5 (140)	5.5 (140)	5.5 (140)	5.5 (140)	5.5 (140)
Ground clearance, center of wheelbase		in. (mm)		6.2 (158)	6.2 (158)	6.2 (158)	6.2 (158)	6.2 (158)
Right angle stacking aisle (2-stage mast)††		in. (mm)		104.1 (2,645)	104.1 (2,645)	104.1 (2,645)	106.1 (2,695)	106.1 (2,695)
Turning radius, outside		in. (mm)		86.2 (2,190)	86.2 (2,190)	86.2 (2,190)	88.2 (2,240)	88.2 (2,240)
PERFORMANCE								
Travel speed, forward, loaded / unloaded		mph (km/h)		11.2 (18) / 11.8 (19)	11.2 (18) / 11.8 (19)	11.5 (18.5) / 11.8 (19)	11.2 (18) / 11.8 (19)	11.2 (18) / 11.8 (19)
Lifting speed, loaded / unloaded (2-stage mast)		fpm (mm/s)		120 (610) / 124 (630)	120 (610) / 124 (630)	124 (630) / 130 (660)	120 (610) / 124 (630)	120 (610) / 124 (630)
Lowering speed, loaded / unloaded (2-stage mast)		fpm (mm/s)		98 (500) / 98 (500)	98 (500) / 98 (500)	98 (500) / 98 (500)	98 (500) / 98 (500)	98 (500) / 98 (500)
Maximum drawbar pull, loaded		lbs. (kN)		3,960 (17.6)	4,720 (21)	4,072 (18.1)	3,960 (17.6)	4,720 (21)
Maximum gradability		%		32	40	36	27	34
Service brake, operation / control				Foot / Hydraulic	Foot / Hydraulic	Foot / Hydraulic	Foot / Hydraulic	Foot / Hydraulic
Parking brake, operation / control				Hand / Mechanical	Hand / Mechanical	Hand / Mechanical	Hand / Mechanical	Hand / Mechanical
Steering, type				FHPS	FHPS	FHPS	FHPS	FHPS
DRIVE								
Engine Manufacturer / Engine model				Nissan / K21	Nissan / K25	Yanmar / 4D94LE	Nissan / K21	Nissan / K25
Rated output (SAE Gross)		HP (kW) @ rpm		56 (41) @ 2,700	60 (44) @ 2,700	65 (48) @ 2,450	56 (41) @ 2,700	60 (44) @ 2,700
Maximum torque (SAE Gross)		lb. - ft. (Nm) @ rpm		119 (160) @ 1,600	142 (193) @ 1,600	141 (191) @ 1,800	119 (160) @ 1,600	142 (193) @ 1,600
No. of cylinders / displacement		cu. in. (cm3)		4 / 126 (2,065)	4 / 152 (2,488)	4 / 187 (3,062)	4 / 126 (2,065)	4 / 152 (2,488)
Fuel tank capacity		U.S. gallons (liters)		15.3 (58)	15.3 (58)	15.3 (58)	15.3 (58)	15.3 (58)
OTHER								
Relief pressure, maximum		psi (bar)		2,650 (181)	2,650 (181)	2,650 (181)	2,650 (181)	2,650 (181)
Transmission				Powershift	Powershift	Powershift	Powershift	Powershift
Sound level, at operator ears		dB		82	83	-	82	83

NOTE: Most values shown in this publication are rounded. Therefore, direct conversion between metric and English or Imperial may be slightly different from those shown. The performance of machines is affected by the condition of the truck and how it is equipped, as well as the nature and condition of the operating area. If these specifications are critical or if your needs exceed the specifications shown here, discuss the proposed application with your authorized dealer.

*Optional masts, attachments, longer load dimensions, and higher lifting heights may result in downrating of the capacity. Contact your authorized dealer.

**Other mast heights available. See MAST DATA chart for other standard mast heights. Contact your authorized dealer.

†Includes 48-inch (1,220 mm) high load backrest. Contact your authorized dealer.

††Add load distance and clearance. Contact your authorized dealer.

FD25T-16	FG28HT-16	FD28T-16	FG30HT-16	FD30T-16	FG32HT-16	FD32T-16	FG35AHT-16	FD35AT-16
Diesel	Gasoline	Diesel	Gasoline	Diesel	Gasoline	Diesel	Gasoline	Diesel
Sit-Down	Sit-Down	Sit-Down	Sit-Down	Sit-Down	Sit-Down	Sit-Down	Sit-Down	Sit-Down
5,000 (2,267)	5,500 (2,495)	5,500 (2,495)	6,000 (2,722)	6,000 (2,722)	6,500 (2,948)	6,500 (2,948)	7,000 (3,175)	7,000 (3,175)
17.9 (455)	19.1 (485)	19.1 (485)	19.1 (485)	19.1 (485)	19.1 (485)	19.1 (485)	19.9 (505)	19.9 (505)
65 (1,650)	66.9 (1,700)	66.9 (1,700)	66.9 (1,700)	66.9 (1,700)	66.9 (1,700)	66.9 (1,700)	66.9 (1,700)	66.9 (1,700)

8,060 (3,660)	8,888 (4,035)	8,920 (4,050)	9,405 (4,270)	9,490 (4,310)	9,791 (4,445)	9,930 (4,510)	10,793 (4,900)	10,970 (4,980)
11,440 (5,195)	12,590 (5,710)	12,640 (5,740)	13,510 (6,130)	13,590 (6,170)	14,200 (6,440)	14,380 (6,530)	15,610 (7,080)	15,700 (7,130)
1,620 (735)	1,810 (820)	1,770 (805)	1,910 (865)	1,890 (860)	2,110 (965)	2,050 (930)	2,200 (1,000)	2,270 (1,030)
3,190 (1,450)	3,510 (1,590)	3,570 (1,620)	3,600 (1,635)	3,700 (1,680)	3,480 (1,580)	3,680 (1,670)	3,970 (1,800)	4,060 (1,845)
4,870 (2,210)	5,390 (2,445)	5,350 (2,430)	5,810 (2,635)	5,790 (2,630)	6,320 (2,865)	6,260 (2,840)	6,830 (3,100)	6,910 (3,135)

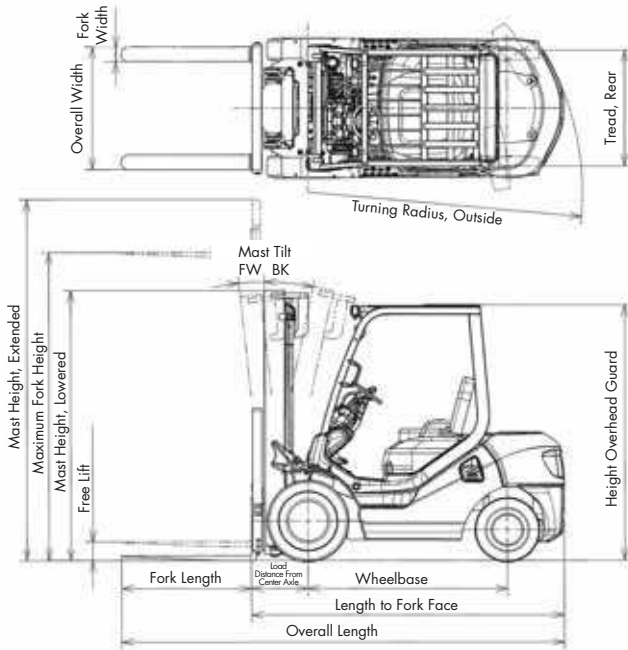
Pneumatic	Pneumatic	Pneumatic	Pneumatic	Pneumatic	Pneumatic	Pneumatic	Pneumatic	Pneumatic
7 - 12 - 12PR	28 x 9 - 15 - 12PR (I)	28 x 9 - 15 - 12PR (I)	28 x 9 - 15 - 12PR (I)	28 x 9 - 15 - 12PR (I)	28 x 9 - 15 - 12PR (I)	28 x 9 - 15 - 12PR (I)	250 - 15 - 20PR	250 - 15 - 20PR
6 - 9 - 10PR	6.5 - 10 - 10PR	6.5 - 10 - 10PR	6.5 - 10 - 10PR	6.5 - 10 - 10PR	6.5 - 10 - 10PR	6.5 - 10 - 10PR	6.5 - 10 - 12PR	6.5 - 10 - 12PR
2x / 2	2x / 2	2x / 2	2x / 2	2x / 2	2x / 2	2x / 2	2x / 2	2x / 2
38 (966)	40.4 (1,025)	40.4 (1,025)	40.4 (1,025)	40.4 (1,025)	40.4 (1,025)	40.4 (1,025)	41.7 (1,060)	41.7 (1,060)
37.8 (960)	38 (965)	38 (965)	38 (965)	38 (965)	38 (965)	38 (965)	38 (965)	38 (965)

6 / 12	6 / 12	6 / 12	6 / 12	6 / 12	6 / 12	6 / 12	6 / 12	6 / 12
6 / 5	6 / 5	6 / 5	6 / 5	6 / 5	6 / 5	6 / 5	6 / 5	6 / 5
85.4 (2,170)	85 (2,160)	85 (2,160)	85 (2,160)	85 (2,160)	88.6 (2,250)	88.6 (2,250)	89.2 (2,265)	89.2 (2,265)
176 (4,470)	176 (4,470)	176 (4,470)	176 (4,470)	176 (4,470)	176 (4,470)	176 (4,470)	176 (4,470)	176 (4,470)
128 (3,250)	128 (3,250)	128 (3,250)	128 (3,250)	128 (3,250)	128 (3,250)	128 (3,250)	132.3 (3,360)	132.3 (3,360)
5.5 (140)	5.5 (140)	5.5 (140)	5.5 (140)	5.5 (140)	5.5 (140)	5.5 (140)	5.5 (140)	5.5 (140)
83.1 (2,110)	83.9 (2,130)	83.9 (2,130)	83.9 (2,130)	83.9 (2,130)	83.9 (2,130)	83.9 (2,130)	84.5 (2,145)	84.5 (2,145)
144.5 (3,670)	146.5 (3,720)	146.5 (3,720)	148.8 (3,780)	148.8 (3,780)	150.6 (3,825)	150.6 (3,825)	152.2 (3,865)	152.2 (3,865)
102.4 (2,600)	104.3 (2,650)	104.3 (2,650)	106.7 (2,710)	106.7 (2,710)	108.5 (2,755)	108.5 (2,755)	110 (2,795)	110 (2,795)
45.3 (1,150)	48.6 (1,235)	48.6 (1,235)	48.6 (1,235)	48.6 (1,235)	48.6 (1,235)	48.6 (1,235)	50.8 (1,290)	50.8 (1,290)
1.6 x 3.9 x 42 (40 x 100 x 1,070)	2 x 4.9 x 42 (50 x 125 x 1,070)	2 x 4.9 x 42 (50 x 125 x 1,070)	2 x 4.9 x 42 (50 x 125 x 1,070)	2 x 4.9 x 42 (50 x 125 x 1,070)	2 x 4.9 x 42 (50 x 125 x 1,070)	2 x 4.9 x 42 (50 x 125 x 1,070)	2 x 4.9 x 42 (50 x 125 x 1,070)	2 x 4.9 x 42 (50 x 125 x 1,070)
40.9 (1,040) / II	41 (1,041) / II	41 (1,041) / II	41 (1,041) / III	41 (1,041) / III	42.1 (1,070) / III	42.1 (1,070) / III	41.7 (1,060) / III	41.7 (1,060) / III
5.5 (140)	5.5 (140)	5.5 (140)	5.5 (140)	5.5 (140)	5.5 (140)	5.5 (140)	5.5 (140)	5.5 (140)
6.2 (158)	7.3 (186)	7.3 (186)	7.3 (186)	7.3 (186)	7.3 (186)	7.3 (186)	7.3 (186)	7.3 (186)
106.1 (2,695)	110 (2,795)	110 (2,795)	112.4 (2,855)	112.4 (2,855)	114.4 (2,906)	114.4 (2,906)	117.5 (2,985)	117.5 (2,985)
88.2 (2,240)	90.9 (2,310)	90.9 (2,310)	93.3 (2,370)	93.3 (2,370)	95.3 (2,420)	95.3 (2,420)	97.6 (2,480)	97.6 (2,480)

11.5 (18.5) / 11.8 (19)	11.5 (18.5) / 12.1 (19.5)	11.8 (19) / 12.1 (19.5)	11.5 (18.5) / 12.1 (19.5)	11.8 (19) / 12.1 (19.5)	10.9 (17.5) / 11.5 (18.5)	11.2 (18) / 11.8 (19)	10.9 (17.5) / 11.5 (18.5)	11.2 (18) / 11.5 (18.5)
124 (630) / 130 (660)	112 (570) / 124 (630)	118 (600) / 128 (650)	104 (530) / 124 (630)	104 (530) / 128 (650)	104 (530) / 114 (580)	98 (500) / 112 (570)	89 (450) / 91 (460)	87 (440) / 91 (460)
98 (500) / 98 (500)	98 (500) / 98 (500)	98 (500) / 98 (500)	98 (500) / 98 (500)	98 (500) / 98 (500)	98 (500) / 98 (500)	98 (500) / 98 (500)	79 (400) / 79 (400)	79 (400) / 79 (400)
4,072 (18.1)	4,630 (20.6)	4,072 (18.1)	4,630 (20.6)	3,937 (17.5)	4,630 (20.6)	3,937 (17.5)	4,410 (19.6)	3,847 (17.1)
31	30	27	27	25	25	24	22	24
Foot / Hydraulic	Foot / Hydraulic	Foot / Hydraulic	Foot / Hydraulic	Foot / Hydraulic	Foot / Hydraulic	Foot / Hydraulic	Foot / Hydraulic	Foot / Hydraulic
Hand / Mechanical	Hand / Mechanical	Hand / Mechanical	Hand / Mechanical	Hand / Mechanical	Hand / Mechanical	Hand / Mechanical	Hand / Mechanical	Hand / Mechanical
FHPS	FHPS	FHPS	FHPS	FHPS	FHPS	FHPS	FHPS	FHPS

Yanmar / 4D94LE	Nissan / K25	Yanmar / 4D94LE	Nissan / K25	Yanmar / 4D94LE	Nissan / K25	Yanmar / 4D94LE	Nissan / K25	Yanmar / 4D94LE
65 (48) @ 2,450	60 (44) @ 2,700	65 (48) @ 2,450	60 (44) @ 2,700	65 (48) @ 2,450	60 (44) @ 2,700	65 (48) @ 2,450	60 (44) @ 2,700	65 (48) @ 2,450
141 (191) @ 1,800	142 (193) @ 1,600	141 (191) @ 1,800	142 (193) @ 1,600	141 (191) @ 1,800	142 (193) @ 1,600	141 (191) @ 1,800	142 (193) @ 1,600	141 (191) @ 1,800
4 / 187 (3,062)	4 / 152 (2,488)	4 / 187 (3,062)	4 / 152 (2,488)	4 / 187 (3,062)	4 / 152 (2,488)	4 / 187 (3,062)	4 / 152 (2,488)	4 / 187 (3,062)
15.3 (58)	15.3 (58)	15.3 (58)	15.3 (58)	15.3 (58)	15.3 (58)	15.3 (58)	15.3 (58)	15.3 (58)

2,650 (181)	2,650 (181)	2,650 (181)	2,650 (181)	2,650 (181)	2,650 (181)	2,650 (181)	2,650 (181)	2,650 (181)
Powershift	Powershift	Powershift	Powershift	Powershift	Powershift	Powershift	Powershift	Powershift
-	83	-	83	-	83	-	83	-



KOMATSU Proven Ability
Komatsu has the ability to eclipse the competition by taking the complicated and making it simple. We strive to provide innovative solutions using the technologies of tomorrow — today.

SPECIAL FEATURES

- » EPA Tier II compliant K21 and K25 industrial engine with high torque at low RPMs for power and fuel efficiency
- » Komfort Zone™ dual floating structure uses drive-train cushion mounts and suspension compartment mounts to isolate the operator from engine and floor vibration
- » EZLift™ Hydraulic System with tandem pump provides fast and controllable lifting speed at low engine RPM
- » New full floating transmission with high-capacity oil cooler for the torque converter, aluminum alloy transmission case for better heat dissipation, and highly reliable, dust-resistant, double-sealed universal joint design
- » Self-adjusting brakes with thicker drums improve heat resistance in severe duty applications
- » Improved steer axle with integral double-acting, double-ended cylinder, high-capacity king-pin needle bearings, and heavy-duty seals
- » New EZview mast with improved visibility window, combined with low profile dash display, offers the operator an unrestricted view to the fork tips and surrounding area
- » KOPS (Komatsu Operator Presence System) Plus locks out lift, lower, tilt and travel functions when the operator leaves the seat for longer than three seconds

STANDARD EQUIPMENT

- » New low profile dash display – Fuel Gauge, Water Temperature Gauge and Hour Meter
- » Indicator lights – Neutral/Return to Neutral, Low Oil Pressure, Low Battery/Alternator, Hydraulic Lock (Operator Presence), Check Engine Warning, Maintenance Error Code
- » Drawbar Pin in Counterweight
- » Electronic Ignition, Anti-Restart Ignition Switch
- » Fully Hydrostatic Power Steering
- » Long-Life Headlights (OHG Mounted)
- » LED Tail/Stop/Rear Turn Lights
- » High-Mount Air Intake
- » Horn with Actuator on Center of Steering Wheel
- » Three-Piece Overhead Guard
- » Komfort Seat and Operator Restraint System with Lap Belt
- » Three-Function Hydraulic Control Valve
- » Parking Brake with Double-Action Release
- » Tilting Steering Column
- » Large, Open Floor Space with Operator Compartment Suspended-Mount Pedals
- » Transmission Torque Converter Oil Cooler
- » Load Backrest
- » Spacious Step Area, Large Entry Handgrip and Wide-Open Floor Space allows easy entry/exit to the Komfort Zone
- » Engine Protection System
- » ITA Class II or Class III Fork Carriage
- » ITA Class II or Class III Forks
- » Critical Wiring Harness Connectors are Waterproof
- » Contoured, Easy-to-Grip, Hydraulic Control Lever Knobs
- » Overhead Guard Mounted Headlights

Maximum Fork Height in. (mm)	Mast Height		Free Lift in. (mm)
Lowered in. (mm)	Extended in. (mm)		
EZview® FG(D)20/25			
2-STAGE FREE VIEW (FV)			
106 (2,690)	74.5 (1,890)	154 (3,910)	5.5 (140)
116 (2,945)	79.5 (2,020)	164 (4,165)	5.5 (140)
128 (3,250)	85.5 (2,170)	176 (4,470)	5.5 (140)
146 (3,705)	94.5 (2,400)	194 (4,925)	5.5 (140)
158 (4,010)	100.5 (2,550)	206 (5,230)	5.5 (140)
2-STAGE FULL FREE VIEW (FFV)			
106 (2,690)	74.5 (1,890)	154 (3,910)	26.5 (670)
116 (2,945)	79.5 (2,020)	164 (4,165)	31.5 (800)
128 (3,250)	85.5 (2,170)	176 (4,470)	37.5 (950)
3-STAGE FULL FREE VIEW (TFV)			
152.5 (3,870)	73.5 (1,865)	200.5 (5,090)	25.5 (645)
170.5 (4,330)	79.5 (2,020)	218.5 (5,550)	31.5 (800)
188.5 (4,785)	85.5 (2,170)	236.5 (6,010)	37.5 (950)
198.5 (5,040)	89.5 (2,275)	246.5 (6,260)	41.5 (1,055)
216.5 (5,500)	97.5 (2,475)	264.5 (6,720)	49.5 (1,255)
235.5 (5,980)	106.5 (2,705)	283.5 (7,200)	58.5 (1,485)
EZview® FG(D)28/30			
2-STAGE FREE VIEW (FV)			
106 (2,690)	74.5 (1,890)	154 (3,910)	5.5 (140)
118 (2,995)	80.5 (2,045)	166 (4,215)	5.5 (140)
128 (3,250)	85.5 (2,170)	176 (4,470)	5.5 (140)
146 (3,705)	94.5 (2,400)	194 (4,925)	5.5 (140)
158 (4,010)	100.5 (2,550)	206 (5,230)	5.5 (140)
2-STAGE FULL FREE VIEW (FFV)			
106.5 (2,690)	75.5 (1,915)	154 (3,910)	26.5 (670)
116.5 (2,945)	80.5 (2,045)	164.5 (4,180)	32.5 (825)
128.5 (3,260)	86.5 (2,195)	176.5 (4,480)	38.5 (975)
3-STAGE FULL FREE VIEW (TFV)			
150.5 (3,820)	74.5 (1,890)	198.5 (5,040)	26.5 (670)
168.5 (4,280)	80.5 (2,045)	216.5 (5,500)	32.5 (825)
183.5 (4,660)	85.5 (2,170)	231.5 (5,880)	37.5 (950)
190.5 (4,835)	88.5 (2,250)	238.5 (6,055)	40.5 (1,025)
211.5 (5,370)	97.5 (2,475)	259.5 (6,590)	49.5 (1,255)
230.5 (5,855)	106.5 (2,705)	278.5 (7,070)	58.5 (1,485)
EZview® FG(D)32			
2-STAGE FREE VIEW (FV)			
106 (2,690)	77.5 (1,970)	154 (3,910)	5.5 (140)
114 (2,895)	81.5 (2,070)	162 (4,115)	5.5 (140)
128 (3,250)	88.5 (2,250)	176 (4,470)	5.5 (140)
146 (3,705)	97.5 (2,475)	194 (4,925)	5.5 (140)
158 (4,010)	103.5 (2,630)	206 (5,230)	5.5 (140)
3-STAGE FULL FREE VIEW (TFV)			
150.5 (3,820)	76.5 (1,945)	198.5 (5,040)	28.5 (725)
162.5 (4,125)	80.5 (2,045)	210.5 (5,345)	32.5 (825)
183.5 (4,660)	87.5 (2,225)	231.5 (5,880)	39.5 (1,000)
189.5 (4,810)	91.5 (2,325)	237.5 (6,030)	43.5 (1,105)
217.5 (5,525)	103.5 (2,630)	265.5 (6,740)	55.5 (1,410)
230.5 (5,855)	110.5 (2,805)	278.5 (7,070)	62.5 (1,585)
EZview® FG(D)35			
2-STAGE FREE VIEW (FV)			
120.5 (3,060)	82.5 (2,095)	168.5 (4,280)	5.5 (140)
132.5 (3,365)	89 (2,260)	180.5 (4,585)	5.5 (140)
148 (3,760)	97 (2,460)	196 (4,975)	5.5 (140)
160 (4,065)	105 (2,665)	208 (5,280)	5.5 (140)
3-STAGE FULL FREE VIEW (TFV)			
149 (3,785)	75.5 (1,915)	197 (5,000)	27.5 (700)
173 (4,395)	82.5 (2,095)	221 (5,610)	34.5 (875)
188.5 (4,785)	89 (2,260)	236.5 (6,005)	41 (1,040)
220 (5,585)	101 (2,565)	268 (6,805)	53 (1,345)
240 (6,095)	109 (2,765)	288 (7,315)	61 (1,550)

NOTE: Specifications for 4-Stage Full Free View (QFV) Masts are not indicated. Please consult your authorized dealer for information and availability.

OPTIONAL EQUIPMENT

- » Warning Lights & Audible Travel Alarms
- » Economy Mode Package
- » Tilt Cylinder Boots
- » Cotton-Core Radiator
- » Spinner Knob Steering Wheel
- » Dual-Fuel System
- » Optional Fork Lengths
- » Sideshifter – Integral or Hang-On
- » 4-Way Valve and Internal Hosing
- » Special Tires
- » Full Suspension Seat
- » Fire Extinguisher
- » Attachments

Contact your authorized dealer for other options.

Courtesy of CraneMarket

ENGINE – GASOLINE / LPG

K21 (2.1 liter) or K25 (2.5 liter) gasoline/LPG, 4-cylinder, in-line engines with Engine Concentrated Control Systems (ECCS) exceed EPA emissions standards. These low-RPM, high-torque industrial engines offer reduced maintenance requirements, exceptional emissions controls, fast acceleration, high performance, reliable durability and enhanced serviceability through engineering excellence.

- There are three engine fuel choices: gasoline multi-port fuel injection, LPG single-port (throttle body) fuel injection, or a dual-fuel system with easy switching at the flip of a switch. All engines are equipped with 3-way catalytic converters and closed-loop exhaust systems.
- All engines utilize an ECCS that continuously monitors data from the fuel pressure, accelerator throttle position, mass air-flow sensor, and heated oxygen sensor – for improved fuel economy, smooth operation, reliable starting in cold weather, and high performance throughout the operating range. An electronic throttle governor protects the engine against over-rev damage.
- Crankshaft and camshaft position sensors provide information to the ECCS for optimum ignition and fuel injection timing. Each cylinder has an individual ignition coil for precise control and reliability.
- An engine coolant temperature sensor and controller protects the engine against damage due to high engine temperature by automatically limiting engine speed during high-temperature operation. If the engine coolant temperature exceeds safe operation temperature, the engine will be shut down. An illuminated indicator on the instrument console indicates high-temperature operation, and gives the operator warning of engine shutdown.
- The aluminum alloy cylinder head has large intake and exhaust valves and a semi-hemispherical combustion chamber for efficient fuel consumption.
- The engine block is designed with five main bearings. All main and rod bearings are micro-grooved to improve lubrication and reduce wear.

ENGINE – DIESEL

The 4D94LE diesel, 4-cylinder, in-line 2.77-liter engine employs 4-stroke, 4-cycle technology and direct injection to produce high performance with excellent fuel economy.

- Delivers the power and efficiency to get the job done quickly and cost-effectively, while meeting all applicable EPA emission requirements.
- Quick Glow Spark (QGS) starting system ensures a fast and reliable start in all climates.

FUEL SYSTEM – GASOLINE / LPG

Gasoline, LPG, or Dual-Fuel systems are available. The gasoline fuel tank is integral to the truck frame.

- In-tank mounted gasoline fuel delivery pump, fuel-level sensing unit, pressure regulator and filter are standard.
- LPG fuel system uses single-point, throttle body fuel injection. A removable 33 lb. or 43 lb. fuel tank is available with stationary, fold-back or swing-out-and-down tank mountings.

FUEL SYSTEM – DIESEL

- The diesel fuel tank is integral to the truck frame.
- Easy-servicing diesel fuel system includes clean-out access and a full-flow fuel filter with water separator.

COOLING SYSTEM

The high-capacity aluminum radiator is designed with an efficient thermal transfer fin and integral oil cooler for the transmission torque converter.

- System design allows easy access to the reservoir for checking the coolant level.
- High-volume cooling fan uses flexible plastic blades and shroud for maximum air volume and noise reduction.

ELECTRICAL SYSTEM

Standard instrument package and operator conveniences:

- 12-volt electrical system
- 50A alternator with built-in IC regulator
- Key-lock, anti-restart ignition switch
- High-torque, low-amp starter motor with planetary gear reduction
- Waterproof electrical connectors
- Electric fuel gauge, water temperature gauge, LCD hour meter
- Indicator lights for Neutral/Return to Neutral, Low Oil Pressure, Low Battery/Alternator Output, Check Engine Warning, Hydraulic Lock (Operator Presence), and ECCS Status Code
- ECCS Service Support Tool connector for rapid system diagnostics
- Sediment warning lamp and glow indicator (Diesel Models Only)

EZLIFT™ HYDRAULIC SYSTEM

The EZlift Hydraulic System features a tandem pump assembly with separate pumps for load handling and steering. This enables faster lifting at engine idle speed for greater fuel economy and performance levels.

- Large hydraulic fluid reservoir integral to the truck frame reduces heat buildup in the system.
- Load sensing valve in the hydraulic circuit reduces the flow of oil to the power steering system when steering wheel is idle.
- EZlift Hydraulic System is fully filtered and features a powerful and efficient direct drive gear pump.

FRAME

An all-welded assembly with heavy-gauge steel and integral hydraulic and fuel tanks provide exceptional durability.

- Welded front cross-member and bolted drive axle increase frame rigidity.
- Loads are transferred directly from the mast to the drive axle and onto the floor without being transmitted through the frame, reducing frame stress.
- Wide, open step area, with non-slip surface facilitates easy operator entry and exit.

DRIVE AXLE

A heavy-duty, cast steel drive axle housing supports the load and chassis without placing a load on the free-floating axle shafts. A flange is mounted to the truck frame to improve load distribution and reduce frame flexing.

TRANSMISSION

Komatsu Torqflow single-speed, powershift transmission is specifically designed for industrial applications.

- Column-mounted electrical shift lever gives the operator easy directional control without removing a hand from the steering wheel.
- Optimized stall ratio for torque converter provides high torque without sacrificing travel speed.
- A modulating control valve absorbs initial pressure spikes during initial engagement and directional change. This improves shifting capabilities and prolongs the life of the entire drive train.
- Transmission oil is double-filtered by a 125-micron mesh on pickup, and a 35-micron cartridge on the return line.
- Transmission oil cooler is integral with the radiator.
- Inching control and auxiliary brake pedal combination allows the operator precise truck positioning with positive control.

BRAKES

Hydraulic brakes are self-energizing and self-adjusting.

- Brake fluid reservoir is located under the console cover for fast, easy inspection and maintenance.
- High-friction brake shoes are free of asbestos.
- Heavy-duty brake backing plate and thick brake drum provide reliable braking action and reduced heat.
- Mechanical parking brake has two-stage latching mechanism for positive engagement.
- Power assist is available on selected models.

STEER AXLE

Fully Hydrostatic Power Steering is standard.

- Independent power steering pump separates steering function from main hydraulics for smoother, more reliable action.
- Heavy-duty fabricated steer axle has double-acting, double-ended power steering cylinder and no drag links or tie rods.
- Steering stops are machined into the steering cylinder to reduce stress impact on steering linkages.
- Grease fittings on all linkages are accessible without lifting the truck.

MAST, CARRIAGE, LBR AND FORKS

High-visibility EZview mast assembly has a 6-roller carriage that is available in two-, three-, and four-stage Free Lift, Free View designs.

- Sealed bearings require no maintenance.
- Angle-mounted bearings and a shaped rail flange prevent excessive wear and friction, while maintaining correct side thrust clearance.
- ITA Class II or Class III carriages accept a variety of fork sizes and common load-handling attachments.
- 48-inch-high load backrest is standard for increased load control and operator protection.
- Single or double auxiliary hydraulic-function internal hose routing is available.

OPERATOR COMPARTMENT

A unique Komfort Zone suspension compartment isolates the operator from the floor surface and from engine vibrations, for greater operator comfort and productivity.

- Orthopedically-designed Komfort seat has built-in lumbar support, retractable seat belt, lateral restraint system, and fore and aft adjustment.
- Hydraulic control levers are positioned for optimum access and ease of use. International symbols on the contoured grips indicate the function.
- Tilting steering console has small-diameter steering wheel and electronic instrumentation. Tilt is infinitely adjustable, with extended room between the engine cover and console.
- Wide-open floorboard has suspended brake and inching pedals with ribbed rubber pads for comfort and safety. Integral accelerator mechanism has a transfer roller for smooth operation.
- Full-width rubber floor mat provides a large, non-slip surface and reduces noise, vibration and heat in the Komfort Zone.
- Large, open steps with a traction surface and a large handgrip provide easy entry and exit for the operator.
- Standard headlight/turn indicator control lever is mounted on the steering column for easy use.
- Full-width overhead guard provides excellent visibility for high stacking and meets or exceeds ITSDF requirements.

SERVICEABILITY

The engine and transmission can be easily accessed for daily inspection without the use of any tools.

- Single-piece, all-steel engine cover and seat support is fully insulated to reduce noise and heat transfer to the Komfort Zone.
- Engine cover has gas-filled cylinder with an automatic locking device to assist in opening and to prevent the cover from unexpectedly closing.
- Easy-access, easy-operation engine cover latch is recessed to prevent interference when entering and exiting the operator compartment.
- Engine cover is shaped for easy access into the engine area for maintenance and service.

COMPLIANCE, APPROVALS AND ENVIRONMENTAL CONCERNS

Designed for maximum recycling at end of life, with special attention to materials and construction.

Counterweight designed for breakup during recycling process. Transmission case is recyclable aluminum.

Komatsu forklifts meet or exceed American National Standard Institute, ITSDF B56.1-Part III Safety Standards for Powered Industrial Trucks.

Classified by Underwriters Laboratories, Inc. for fire hazard only. Contact your dealer for application-specific requirements.

Meets or exceeds EPA emissions standards 40 CFR.

Komatsu Forklift U.S.A., Inc. is an ISO 9001-certified facility headquartered in Covington, Georgia.

KOMATSU®

KOMATSU FORKLIFT U.S.A., INC.

14481 Lochridge Boulevard, Covington, GA 30014
TELEPHONE: 770.787.5100 | FAX: 770.385.6003

1.800.821.9365
www.kfiusa.com

YOUR AUTHORIZED DEALER OF KOMATSU FORKLIFTS



PNEUMATIC TIRE FORKLIFT

**3,000-7,000 LB CAPACITY DUAL FUEL (LP GAS / GASOLINE)
AND DIESEL MODELS**

YOUR GO-TO PNEUMATIC TIRE FORKLIFT TRUCK



COMFORT COMES STANDARD.

STEP INTO THE OPERATOR COMPARTMENT OF AN FG15N-FG35N / FD20N-FD35N



Comfortable Operator Compartment:

With three-point access, operators of a wide range of sizes can easily enter the operator compartment of these Mitsubishi forklift trucks. The large floor space provides maximum operator comfort, especially during long shifts, while the “through the floor” pedal design further reduces operator fatigue and discomfort throughout the day.

Excellent Operator Visibility:

From the standard lighting package, which includes two forward LED work lights, to the absence of crossbars in the overhead guard and the specially-designed mast, the design of the forklift allows for excellent visibility in all directions during operation.

Operator Comfort: Optional fingertip control armrest provides operators with low-effort levers and length / height adjustment, all while continuing to provide a high-level of precision and control.

Adjustable Steering: The forklift’s steering column is equipped with standard memory tilt steering. Allowing for infinite adjustment in a 12 degree range, the steering column’s “memory” feature retains the operator’s preferred settings for added convenience and comfort during operation.

- Designed for operator comfort
- Adjustable seating for flexibility
- Excellent visibility
- Memory tilt steering

All come together to create a working environment that reduces fatigue through even the longest shifts.

Every operator is different, so the key to creating a comfortable shift is a flexible design.





Features	Standard	Optional
Non-suspension vinyl seat	●	
LPMax - Enhanced Low LP Fuel Warning	●	
Integrated Presence System	●	
Two forward work lights	●	
Swing-out LP tank bracket	●	
Full-suspension seat		●
Fingertip control		●
Cab options		●
Seatbelt Interlock		●



PERFORMANCE AND SERVICE.

QUALITY COMPONENTS AND EASY MAINTENANCE MEAN INCREASED UPTIME



- Smooth powerful engines
- Enhanced engine protection
- Reliable components
- Easy service access
- Flexible options

These forklifts are built to perform from the ground up.

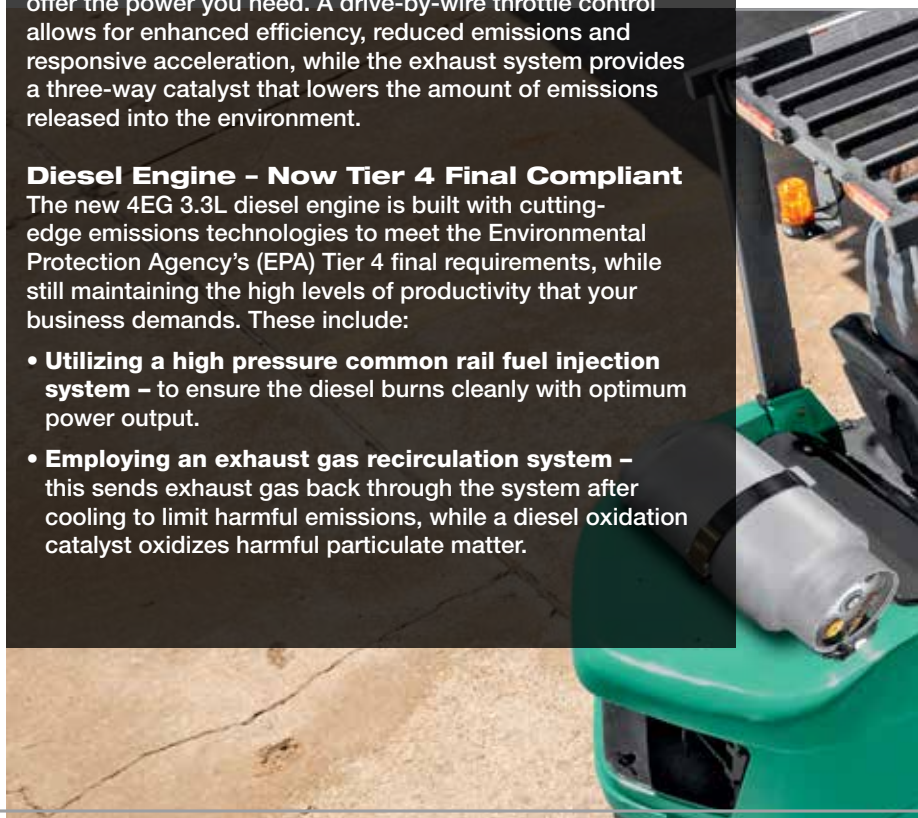
Dual Fuel: LPG / Gas Engine - Efficient From The Inside Out

Equipped with an efficient EK21 / EK25 engine, these forklifts offer the power you need. A drive-by-wire throttle control allows for enhanced efficiency, reduced emissions and responsive acceleration, while the exhaust system provides a three-way catalyst that lowers the amount of emissions released into the environment.

Diesel Engine - Now Tier 4 Final Compliant

The new 4EG 3.3L diesel engine is built with cutting-edge emissions technologies to meet the Environmental Protection Agency's (EPA) Tier 4 final requirements, while still maintaining the high levels of productivity that your business demands. These include:

- **Utilizing a high pressure common rail fuel injection system** – to ensure the diesel burns cleanly with optimum power output.
- **Employing an exhaust gas recirculation system** – this sends exhaust gas back through the system after cooling to limit harmful emissions, while a diesel oxidation catalyst oxidizes harmful particulate matter.





SmoothShift: Provides smooth direction shift changes, resulting in reduced transmission shift shock, protecting the Drivetrain from full-speed shifts in direction, plus reduced tire spin, for increased tire life. This system helps reduce possible damage to the Driveline components due to the shock of high speed shifts, while also reducing tire spin to extend tire life. For LP/LPG models only.

Engine Protection: Regulated by the Vehicle Control Module, the Engine Protection System keeps the truck running at desirable levels while helping to prevent damage to the forklift, saving you money. If any of the vital fluids become critically low, RPM levels are automatically lowered and the operator is immediately notified by a light on the dash display.

LP Max High Accuracy Fuel Level Sensor: Standard feature that provides a low LP fuel level warning to the operator an average of eight minutes before the LP tank is empty, which can improve plant productivity and reduce downtime. This also helps save money on fuel by minimizing early tank replacement.



Additional options are available to customize the forklift for your application:

- Ground Speed Control
- Square Fin Radiator
- Warning Lights
- Air Intake Precleaner
- Underbelly Screen
- Fuel Saver Mode
- Foundry/Brick Protection
- Cotton Fiber Protection

CHARACTERISTICS			FG15N		FG18N		FG20CN		FG20N	
1	Capacity at rated load center	lb kg	3,000	1,500	3,500	1,750	4,000	2,000	4,000	2,000
2	Capacity at load center – distance	in mm	24	500	24	500	24	500	24	500
3	Power		dual fuel: gasoline/LPG		dual fuel: gasoline/LPG		dual fuel: gasoline/LPG		dual fuel: gasoline/LPG	
4	Tire type		pneumatic		pneumatic		pneumatic		pneumatic	
5	Wheels (x = driven)		2x / 2		2x / 2		2x / 2		2x / 2	
DIMENSIONS										
6	Maximum fork height – with standard two-stage mast	in mm	131	3,325	131	3,325	131	3,325	131.5	3,340
7	Free fork height – with standard two-stage mast	in mm	4.5	115	4.5	115	4.7	120	5.5	140
8	Fork dimensions – length x width x thickness	in mm	1.4x42.0x3.9	35x1,070x100	1.4x42.0x3.9	35x1,070x100	1.6x42.0x3.9	40x1,070x100	1.6x42.0x3.9	40x1,070x100
9	Fork spacing, out-to-out minimum / maximum	in mm	7.9 / 36.2	200 / 920	7.9 / 36.2	200 / 920	7.9 / 36.2	200 / 920	8.7 / 39.4	220 / 1,000
10	Tilt, forward / backward	deg	6° / 10°		6° / 10°		6° / 10°		6° / 10°	
11	Length to fork face	in mm	89.0	2,260	90.4	2,295	92.5	2,350	98.0	2,490
12	Overall width with standard tires	in mm	41.9	1,065	41.9	1,065	41.9	1,065	45.3	1,150
13	Overall width with optional duals	in mm	-		-		-		64.6	1,640
14	Height with lowered mast	in mm	84.5	2,140	84.5	2,140	84.5	2,140	84.5	2,145
15	Seat height	in mm	44.4	1,127	44.4	1,127	44.4	1,127	44.8	1,137
16	Height to top of overhead guard	in mm	82.7	2,100	82.7	2,100	82.7	2,100	82.9	2,105
17	Height with extended mast	in mm	179	4,549	179	4,549	179	4,549	180	4,564
18	Minimum outside turning radius	in mm	76.8	1,950	78.0	1,980	79.5	2,020	86.6	2,200
19	Load moment constant	in mm	15.7	400	15.7	400	16.3	415	17.9	455
20	Minimum aisle – 90° stack – zero clearance without load	in mm	92.5	2,350	93.7	2,380	95.9	2,435	105	2,655
PERFORMANCE										
21	Travel speed, loaded / empty	mph km/h	10.9 / 11.8	17.5 / 19.0	10.9 / 11.8	17.5 / 19.0	11.2 / 11.5	18.0 / 18.5	10.6 / 11.5	17.0 / 18.5
22	Lift speed, loaded / empty	fpm mm/s	122 / 124	0.62 / 0.63	122 / 124	0.62 / 0.63	122 / 124	0.62 / 0.63	112 / 116	0.57 / 0.59
23	Lowering speed, loaded / empty	fpm m/s	98.4 / 98.4	0.50 / 0.50	98.4 / 98.4	0.50 / 0.50	98.4 / 98.4	0.50 / 0.50	98.4 / 98.4	0.50 / 0.50
24	Drawbar pull loaded (60-minute rating)	lb N	3,910	17,400	3,910	17,400	3,870	17,200	3,840	17,100
25	Drawbar pull loaded maximum (5-minute rating)	lb N	4,560	20,300	4,560	20,300	4,500	20,000	4,500	20,000
26	Gradeability loaded at 1 mph (1.6 km)	%	39.0		39.0		38.0		35.0	
27	Gradeability maximum, loaded / empty	%	63.0		55.0		46.0		41.0	
WEIGHT										
28	Empty	lb kg	5,650	2,560	6,070	2,750	6,750	3,040	7,370	3,340
29	Axle load with rated load, front / rear (est.)	lb kg	7,710 / 940	3,620 / 440	8,460 / 1,110	3,980 / 520	9,370 / 1,380	4,390 / 650	9,950 / 1,420	4,660 / 685
30	Axle load without load, front / rear (est.)	lb kg	2,490 / 3,160	1,130 / 1,430	2,370 / 3,700	1,080 / 1,670	2,390 / 4,360	1,080 / 1,960	3,240 / 4,130	1,470 / 1,870
CHASSIS										
31	Tire size – front (standard)	in	6.5 x 10 - 10PR		6.5 x 10 - 10PR		6.5 x 10 / 5.0 Solid		7.0 x 12 - 12PR	
32	Tire size – front (optional duals)	in	-		-		-		7.0 x 12 - 12PR	
33	Tire size – rear	in	5.0 x 8 - 10PR		5.0 x 8 - 10PR		5.0 x 8 / 3.0 Solid		6.0 x 9 - 10PR	
34	Wheelbase	in mm	55.1	1,400	55.1	1,400	55.1	1,400	63.0	1,600
35	Tread width – front (standard tires)	in mm	35.0	890	35.0	890	35.0	890	37.8	960
36	Tread width – front (optional duals)	in mm	-		-		-		47.4	1,205
37	Tread width – rear	in mm	35.4	900	35.4	900	35.4	900	38.6	980
38	Ground clearance at lowest point of mast	in mm	4.3	110	4.3	110	4.3	110	4.6	117
39	Ground clearance at center of wheelbase	in mm	6.0	152	6.0	152	6.0	152	6.6	167
40	Service brakes	type	foot-operated, hydraulic		foot-operated, hydraulic		foot-operated, hydraulic		foot-operated, hydraulic	
41	Parking brakes	type	hand, mechanical		hand, mechanical		hand, mechanical		hand, mechanical	
ELECTRICAL										
42	Engine model		EK21E		EK21E		EK21E		EK21E	
43	Continuous output S.A.E. gross	HP kW	53.0	40	53.0	40	53.0	40	53.0	40
44		at rpm	2,700		2,700		2,700		2,700	
45	Maximum torque S.A.E. gross	lb-ft Nm	110	153	110	153	110	153	110	153
46		at rpm	1,800		1,800		1,800		1,800	
47	Cylinders / displacement	cu in L	4 / 126	4 / 2.1	4 / 126	4 / 2.1	4 / 126	4 / 2.1	4 / 126	4 / 2.1
48	Transmission type		powershift		powershift		powershift		powershift	
49	Number of speeds, forward / reverse		1 / 1		1 / 1		1 / 1		1 / 1	
50	Battery		12		12		12		12	
51	Relief pressure for attachments	psi bar	2,610	180	2,610	180	2,610	180	2,610	180
52	Noise level – mean value at operator's ear Leq	dB(A)	73.5		73.5		73.5		73.5	

SAFETY STANDARDS

These trucks meet American National Standards Institute/Industrial Truck Standards Development Foundation, ANSI/ITSDF B56.1. UL-Classified by Underwriters Laboratories, Inc., as to fire and electric shock hazard only. Availability: Types G/LP and D standard. Types GS/LPS and DS optional. Users should be aware of, and adhere to, applicable codes and regulations regarding operator training, use, operation and maintenance of powered industrial trucks, including:

- ANSI/ITSDF B56.1.
- NFPA 505, fire safety standard for powered industrial trucks - type designations, areas of use, maintenance and operation.
- Occupational Safety and Health Administration (OSHA) regulations that may apply.

Specifications, equipment, technical data, photos and illustrations based on information at time of printing and subject to change without notice. Some products may be shown with optional equipment.

	FD20N		FG25N		FD25N		FG28N		FD28N		FG30N	
1	4,000	2,000	5,000	2,500	5,000	2,500	5,500	2,800	5,500	2,800	6,000	3,000
2	24	500	24	500	24	500	24	500	24	500	24	500
3	diesel		dual fuel: gasoline/LPG		diesel		dual fuel: gasoline/LPG		diesel		dual fuel: gasoline/LPG	
4	pneumatic		pneumatic		pneumatic		pneumatic		pneumatic		pneumatic	
5	2x / 2		2x / 2		2x / 2		2x / 2		2x / 2		2x / 2	
6	131.5	3,340	131.5	3,340	131.5	3,340	130.5	3,315	130.5	3,315	130.5	3,315
7	5.5	140	5.5	140	5.5	140	5.7	145	5.7	145	5.7	145
8	1.6x42.0x3.9	40x 1,070x 100	1.6x42.0x3.9	40x 1,070x 100	1.6x42.0x3.9	40x 1,070x 100	1.8x42.0x4.9	45x 1,070x 125	1.8x42.0x4.9	45x 1,070x 125	1.8x42.0x4.9	45x 1,070x 125
9	8.7 / 39.4	220 / 1,000	8.7 / 39.4	220 / 1,000	8.7 / 39.4	220 / 1,000	9.8 / 39.4	250 / 1,000	9.8 / 39.4	250 / 1,000	9.8 / 39.4	250 / 1,000
10	6° / 10°		6° / 10°		6° / 10°		6° / 10°		6° / 10°		6° / 10°	
11	98.0	2,490	100	2,550	100.0	2,550	104	2,645	104	2,645	107	2,720
12	45.3	1,150	45.3	1,150	45.3	1,150	50.2	1,275	50.2	1,275	50.2	1,275
13	64.6	1,640	64.6	1,640	64.6	1,640	67.5	1,715	67.5	1,715	67.5	1,715
14	84.5	2,145	84.5	2,145	84.5	2,145	85.5	2,165	85.5	2,165	85.5	2,165
15	44.8	1,137	44.8	1,137	44.8	1,137	46.7	1,187	46.7	1,187	46.7	1,187
16	82.9	2,105	82.9	2,105	82.9	2,105	83.7	2,125	83.7	2,125	83.7	2,125
17	180	4,564	180	4,564	180	4,564	178.5	4,536	178.5	4,536	178.5	4,536
18	86.6	2,200	87.8	2,230	87.8	2,230	91.1	2,315	91.1	2,315	93.7	2,380
19	17.9	455	17.9	455	17.9	455	19.3	490	19.3	490	19.3	490
20	105	2,655	106	2,685	106	2,685	110	2,805	110	2,805	113	2,870
21	10.3 / 11.2	16.5 / 18.0	10.6 / 11.5	17.0 / 18.5	10.3 / 10.9	16.5 / 17.5	10.6 / 11.2	17.0 / 18.0	9.9 / 10.9	16.0 / 17.5	10.6 / 11.2	17.0 / 18.0
22	120 / 126	0.61 / 0.64	112 / 116	0.57 / 0.59	120 / 126	0.61 / 0.64	98.4 / 102	0.50 / 0.52	96.5 / 100	0.49 / 0.51	98.4 / 102	0.50 / 0.52
23	98.4 / 98.4	0.50 / 0.50	98.4 / 98.4	0.50 / 0.50	98.4 / 98.4	0.50 / 0.50	98.4 / 98.4	0.50 / 0.50	98.4 / 98.4	0.50 / 0.50	98.4 / 98.4	0.50 / 0.50
24	3,960	17,600	3,840	17,100	3,960	17,600	4,990	22,200	3,960	17,600	4,990	22,200
25	4,520	20,100	4,520	20,100	4,520	20,100	5,800	25,800	4,540	20,200	5,800	25,800
26	36.0		30.0		31.0		36.0		28.0		34.0	
27	42.0		36.0		37.0		43.0		32.0		41.0	
28	7,610	3,450	7,990	3,620	8,210	3,720	9,090	4,120	9,330	4,230	9,400	4,260
29	10,060 / 1,550	4,720 / 730	11,570 / 1,420	5,450 / 670	11,650 / 1,560	5,490 / 730	12,950 / 1,640	6,100 / 770	13,050 / 1,780	6,150 / 830	13,790 / 1,610	6,390 / 870
30	3,340 / 4,270	1,510 / 1,940	3,190 / 4,800	1,440 / 2,180	3,260 / 4,950	1,480 / 2,240	3,670 / 5,420	1,660 / 2,460	3,730 / 5,600	1,690 / 2,540	3,860 / 5,540	1,700 / 2,560
31	7.0 x 12 - 12PR		7.0 x 12 - 12PR		7.0 x 12 - 12PR		28 x 9 x 15 - 12PR		28 x 9 x 15 - 12PR		28 x 9 x 15 - 12PR	
32	7.0 x 12 - 12PR		7.0 x 12 - 12PR		7.0 x 12 - 12PR		28 x 9 x 15 - 12PR		28 x 9 x 15 - 12PR		28 x 9 x 15 - 12PR	
33	6.0 x 9 - 10PR		6.0 x 9 - 10PR		6.0 x 9 - 10PR		6.5 x 10 - 10PR		6.5 x 10 - 10PR		6.5 x 10 - 10PR	
34	63.0	1,600	63.0	1,600	63.0	1,600	63.8	1,620	63.8	1,620	66.9	1,700
35	37.8	960	37.8	960	37.8	960	41.7	1,060	41.7	1,060	41.7	1,060
36	47.4	1,205	47.4	1,205	47.4	1,205	47.2	1,200	47.2	1,200	47.2	1,200
37	38.6	980	38.6	980	38.6	980	38.6	980	38.6	980	38.6	980
38	4.6	117	4.6	117	4.6	117	5.4	136	5.4	136	5.4	136
39	6.6	167	6.6	167	6.6	167	7.4	189	7.4	189	7.4	189
40	foot-operated, hydraulic		foot-operated, hydraulic		foot-operated, hydraulic		foot-operated, hydraulic		foot-operated, hydraulic		foot-operated, hydraulic	
41	hand, mechanical		hand, mechanical		hand, mechanical		hand, mechanical		hand, mechanical		hand, mechanical	
42	4EG		EK21E		4EG		EK25E		4EG		EK25E	
43	48.0	36.0	53.0	44	48.0	36.0	61.0	44	48.0	36.0	61.0	45.8
44	2,250		2,700		2,250		2,700		2,250		2,700	
45	131	177	110	153	131	177	129	168	131	177	129	168
46	1,800		1,800		1,800		1,600		1,800		1,600	
47	4 / 203	4 / 3.3	4 / 126	4 / 2.1	4 / 203	4 / 3.3	4 / 152	4 / 2.5	4 / 203	4 / 3.3	4 / 152	4 / 2.5
48	powershift		powershift		powershift		powershift		powershift		powershift	
49	1 / 1		1 / 1		1 / 1		1 / 1		1 / 1		1 / 1	
50	12		12		12		12		12		12	
51	2,610	180	2,610	180	2,610	180	2,610	180	2,610	180	2,610	180
52	75.5		73.5		75.5		76.5		75.5		76.5	

DISCLAIMER

The information in these materials is being provided for marketing and informational purposes only. Actual specifications, functions, and performance may vary from those set forth in these materials and are available upon request. Operators should always consult the applicable Logisnext Operator's Manual and/or Service Manuals prior to use. Nothing in these materials is intended to constitute a representation, warranty or guarantee for any equipment sold and Logisnext hereby disclaims the same.

CHARACTERISTICS			FD30N		FG33N		FD33N		FG35N	
1	Capacity at rated load center	lb kg	6,000	3,000	6,500	3,300	6,500	3,300	7,000	3,500
2	Capacity at load center – distance	in mm	24	500	24	500	24	500	24	500
3	Power		diesel		dual fuel: gasoline/LPG		diesel		dual fuel: gasoline/LPG	
4	Tire type		pneumatic		pneumatic		pneumatic		pneumatic	
5	Wheels (x = driven)		2x / 2		2x / 2		2x / 2		2x / 2	
DIMENSIONS										
6	Maximum fork height – with standard two-stage mast	in mm	130.5	3,315	131.5	3,350	131.5	3,350	131.5	3,350
7	Free fork height – with standard two-stage mast	in mm	5.7	145	5.9	150	5.9	150	5.9	150
8	Fork dimensions – length x width x thickness	in mm	1.8x42.0x4.9	45x 1,070x 125	2.0x42.0x4.9	50x 1,070x 125	2.0x42.0x4.9	50x 1,070x 125	2.0x42.0x4.9	50x 1,070x 125
9	Fork spacing, out-to-out minimum / maximum	in mm	9.8 / 39.4	250 / 1,000	9.8 / 39.4	250 / 1,000	9.8 / 39.4	250 / 1,000	9.8 / 39.4	250 / 1,000
10	Tilt, forward / backward	deg	6° / 10°		6° / 10°		6° / 10°		6° / 10°	
11	Length to fork face	in mm	107	2,720	108	2,750	108	2,750	110	2,790
12	Overall width with standard tires	in mm	50.2	1,275	50.2	1,275	50.2	1,275	50.8	1,290
13	Overall width with optional duals	in mm	67.5	1,715	67.5	1,715	67.5	1,715	67.5	1,715
14	Height with lowered mast	in mm	85.5	2,165	90.5	2,299	90.5	2,299	90.5	2,299
15	Seat height	in mm	46.7	1,187	46.7	1,187	46.7	1,187	46.7	1,187
16	Height to top of overhead guard	in mm	83.7	2,125	83.7	2,125	83.7	2,125	84.3	2,140
17	Height with extended mast	in mm	178.5	4,536	180	4,566	180	4,566	180	4,566
18	Minimum outside turning radius	in mm	93.7	2,380	95.7	2,430	95.7	2,430	96.1	2,440
19	Load moment constant	in mm	19.3	490	19.3	490	19.3	490	19.5	495
20	Minimum aisle – 90° stack – zero clearance without load	in mm	113	2,870	115	2,920	115	2,920	116	2,935
PERFORMANCE										
21	Travel speed, loaded / empty	mph km/h	9.9 / 10.9	16.0 / 17.5	10.9 / 11.5	17.5 / 18.5	10.3 / 11.2	16.5 / 18.0	10.9 / 11.5	17.5 / 18.5
22	Lift speed, loaded / empty	fpm mm/s	96.5 / 100	0.49 / 0.51	98.4 / 102	0.50 / 0.52	96.5 / 100	0.49 / 0.51	82.7 / 86.6	0.42 / 0.44
23	Lowering speed, loaded / empty	fpm m/s	98.4 / 98.4	0.50 / 0.50	98.4 / 98.4	0.50 / 0.50	98.4 / 98.4	0.50 / 0.50	98.4 / 98.4	0.50 / 0.50
24	Drawbar pull loaded (60-minute rating)	lb N	3,960	17,600	4,610	20,500	3,620	16,100	4,610	20,500
25	Drawbar pull loaded maximum (5-minute rating)	lb N	4,540	20,200	5,310	23,600	4,140	18,400	5,310	23,600
26	Gradeability loaded at 1 mph (1.6 km)	%	26.0		29.0		22.0		27.0	
27	Gradeability maximum, loaded / empty	%	30.0		33.0		25.0		32.0	
WEIGHT										
28	Empty	lb kg	9,640	4,370	10,150	4,600	10,390	4,710	10,340	4,690
29	Axle load with rated load, front / rear (est.)	lb kg	13,890 / 1,750	6,550 / 820	14,590 / 2,060	6,880 / 970	14,700 / 2,190	6,920 / 1,040	15,400 / 1,990	7,250 / 940
30	Axle load without load, front / rear (est.)	lb kg	3,920 / 5,720	1,770 / 2,600	3,790 / 6,360	1,710 / 2,890	3,890 / 6,500	1,760 / 2,950	3,700 / 6,640	1,680 / 3,010
CHASSIS										
31	Tire size – front (standard)	in	28 x 9 x 15 - 12PR		250 x 15 - 16PR		250 x 15 - 16PR		250 x 15 - 16PR	
32	Tire size – front (optional duals)	in	28 x 9 x 15 - 12PR		28 x 9 x 15 - 12PR		28 x 9 x 15 - 12PR		28 x 9 x 15 - 12PR	
33	Tire size – rear	in	6.5 x 10 - 10PR		6.5 x 10 - 12PR		6.5 x 10 - 12PR		6.5 x 10 - 12PR	
34	Wheelbase	in mm	66.9	1,700	66.9	1,700	66.9	1,700	66.9	1,700
35	Tread width – front (standard tires)	in mm	41.7	1,060	41.7	1,060	41.7	1,060	41.7	1,060
36	Tread width – front (optional duals)	in mm	47.2	1,200	47.2	1,200	47.2	1,200	47.2	1,200
37	Tread width – rear	in mm	38.6	980	38.6	980	38.6	980	38.6	980
38	Ground clearance at lowest point of mast	in mm	5.4	136	5.4	136	5.4	136	5.7	146
39	Ground clearance at center of wheelbase	in mm	7.4	189	7.4	189	7.4	189	8.0	202
40	Service brakes	type	foot-operated, hydraulic		foot-operated, hydraulic		foot-operated, hydraulic		foot-operated, hydraulic	
41	Parking brakes	type	hand, mechanical		hand, mechanical		hand, mechanical		hand, mechanical	
ELECTRICAL										
42	Engine model		4EG		EK25E		4EG		EK25E	
43	Continuous output S.A.E. gross	HP kW	48.0	36.0	61.0	44	48.0	36.0	61.0	44
44		at rpm	2,250		2,700		2,250		2,700	
45	Maximum torque S.A.E. gross	lb-ft Nm	131	177	129	168	131	177	129	168
46		at rpm	1,800		1,600		1,800		1,600	
47	Cylinders / displacement	cu in L	4 / 203	4 / 3.3	4 / 152	4 / 2.5	4 / 203	4 / 3.3	4 / 152	4 / 2.5
48	Transmission type		powershift		powershift		powershift		powershift	
49	Number of speeds, forward / reverse		1 / 1		1 / 1		1 / 1		1 / 1	
50	Battery		12		12		12		12	
51	Relief pressure for attachments	psi bar	2,610	180	2,610	180	2,610	180	2,610	180
52	Noise level – mean value at operator's ear Leq	dB(A)	75.5		76.5		75.5		76.5	

SAFETY STANDARDS

These trucks meet American National Standards Institute/Industrial Truck Standards Development Foundation, ANSI/ITSDF B56.1. UL-Classified by Underwriters Laboratories, Inc., as to fire and electric shock hazard only. Availability: Types G/LP and D standard. Types GS/LPS and DS Option (subject to availability). Users should be aware of, and adhere to, applicable codes and regulations regarding operator training, use, operation and maintenance of powered industrial trucks, including:

- ANSI/ITSDF B56.1.
- NFPA 505, fire safety standard for powered industrial trucks - type designations, areas of use, maintenance and operation.
- Occupational Safety and Health Administration (OSHA) regulations that may apply.

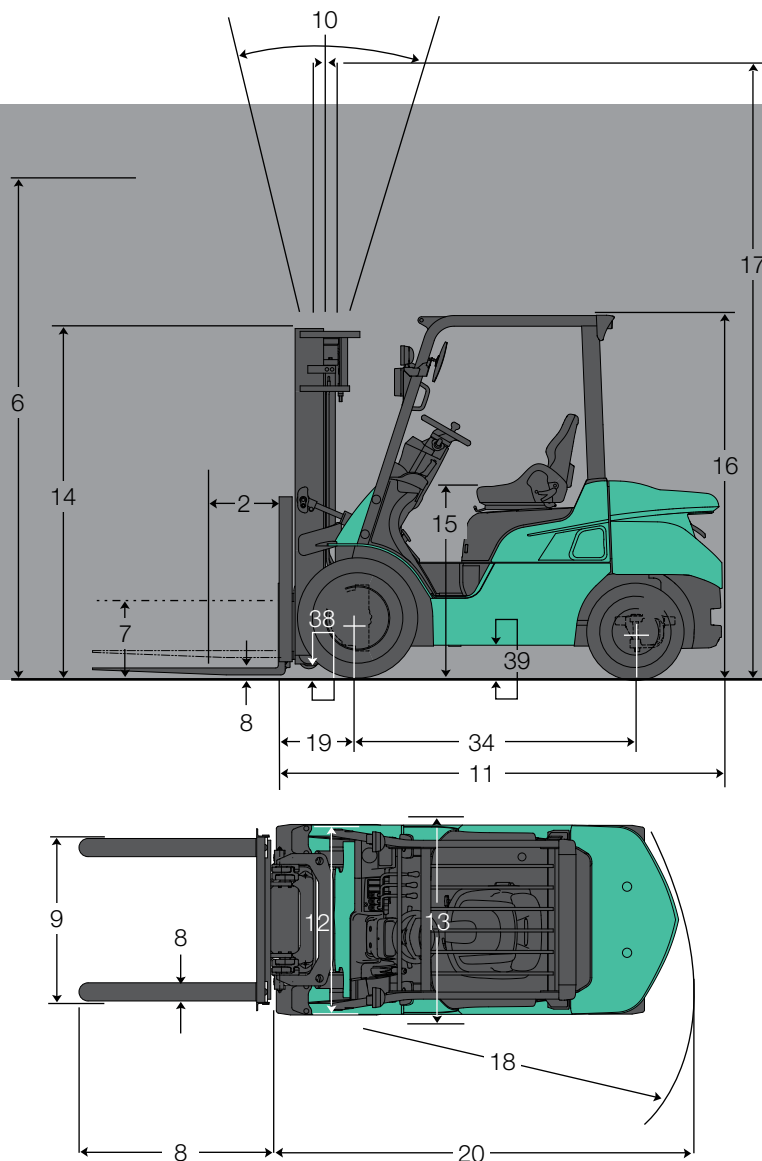
Specifications, equipment, technical data, photos and illustrations based on information at time of printing and subject to change without notice. Some products may be shown with optional equipment.

FD35N		
1	7,000	3,500
2	24	500
3	diesel	
4	pneumatic	
5	2x / 2	
6	131.5	3,350
7	5.9	150
8	2.0x42.0x4.9	50x1,070x125
9	9.8 / 39.4	250 / 1,000
10	6° / 10°	
11	110	2,790
12	50.8	1,290
13	67.5	1,715
14	90.5	2,299
15	46.7	1,187
16	84.3	2,140
17	180	4,566
18	96.1	2,440
19	19.5	495
20	116	2,935
21	10.3 / 11.2	16.5 / 18.0
22	80.7 / 84.6	0.41 / 0.43
23	98.4 / 98.4	0.50 / 0.50
24	3,620	16,100
25	4,140	18,400
26	21.0	
27	24.0	
28	10,590	4,800
29	15,500 / 2,130	7,300 / 1,000
30	3,820 / 6,770	1,730 / 3,070
31	250 x 15 - 16PR	
32	28 x 9 x 15 - 12PR	
33	6.5 x 10 - 12PR	
34	66.9	1,700
35	41.7	1,060
36	47.2	1,200
37	38.6	980
38	5.7	146
39	8.0	202
40	foot-operated, hydraulic	
41	hand, mechanical	
42	4EG	
43	48.0	36.0
44	2,250	
45	131	177
46	1,800	
47	4 / 203	4 / 3.3
48	powershift	
49	1 / 1	
50	12	
51	2,610	180
52	75.5	

Call-out numbers shown in the diagram below correspond to the first column of the specifications chart.

FG15N-FG35N

FD20N-FD35N



GOING THE EXTRA MILE.

HELPING KEEP OPERATORS AND PRODUCTS SECURE REQUIRES CONSTANT AWARENESS



Mitsubishi Forklift Trucks offers a selection of options designed to help mitigate risks associated with unique hazards in the work environment.

Integrated Presence System:

The FG15N-FG35N / FD20-FD35N series is built to help protect the operator and surrounding personnel. Each forklift comes standard with the Integrated Presence System (IPS), which is designed to disengage all powered travel and all hydraulic functions when the operator leaves the normal operating position. A warning alarm will also sound and an indicator on the dash will appear if the operator leaves the compartment without applying the parking brake.

Additional Options:

- Rear grab bar with horn button – This option allows the operator to easily access the horn while traveling in reverse, while the ergonomic placement of the rear grab bar creates a secure grip.
- Ground speed control – This programmable feature regulates top speeds and acceleration in environments where caution should be exercised.
- Swing-down LP gas tank bracket – Helping to reduce operator strain, this option makes it easier to remove and replace the empty fuel tank.
- Light, strobe and alarm packages – In dimly lit work areas, the optional rear work lights and strobe packages enhance operator visibility while increasing the visibility of the forklift to others working in the same area.
- Fuel saver mode – This system slows the acceleration of the forklift which allows savings of up to 14% in fuel efficiency without limiting the top speed of the truck.
- Thermoformed overhead guard cover – This plastic cover, offered in both clear or tinted, will help protect the operator from the elements while still allowing visibility through the overhead guard.

The Integrated Presence System provides audible and visual reminders to the operator.

Ground speed control allows you to set limits for the forklift's top speeds. This is especially useful in applications with pedestrian traffic.



FG15N-FG35N FD20N-FD35N

3,000-7,000 LB CAPACITY PNEUMATIC TIRE FORKLIFT

Delivering Exceptional Value

More Than 296,000 Parts To Keep You Running

Mitsubishi Forklift Trucks offers several parts programs, all designed to bring you top performance and convenience for your material handling needs. Contact your local dealer to put our services to work for you.

Support To Fit Your Operation

Find out why more companies are relying on Mitsubishi forklift truck dealers to keep their fleet operating at top performance. Our efficiency provides customers with a better return on investment, and qualified service technicians, diverse parts inventory and unparalleled selection of service options can help reduce your total cost of ownership.

Extensive Dealer Network

The Mitsubishi forklift truck dealer network is dedicated to finding the right forklift solution for your business. With more than 300 dealer locations, you can rely on your local dealer to provide the service you need when you need it most.



Manufactured with superior quality and exceptional value, Mitsubishi forklift trucks are supported by an extensive dealer and field support network located throughout North and South America. Don't forget to ask your local Mitsubishi forklift truck dealer about details on factory retail programs, financing plans and additional options and dealer services like planned maintenance and operator training.



GP-VX

VERACITOR® PNEUMATIC TIRE TRUCKS

4,000 · 5,000 lbs

Yale Veracitor® GP-VX Series

This series of trucks is available in several configurations, designed to meet and exceed your material handling application requirements. The Veracitor® forklift can be configured for maximum performance and lowest cost of operation for medium to heavy duty applications with state-of-the-art features and superior power. The innovative Yale® Flex Performance Technology™ offers selectable performance modes that provide the flexibility to maximize fuel economy or productivity to match application needs.

Yale Veracitor® VX Industrial Engines

feature a rigid cast iron block and main bearing caps. The nodular iron crankshaft is supported with five main bearings. All engines include hardened exhaust valve seats with stellite coated valves for superior durability and electronic throttle control for precise performance and consistent operation. Both Kubota engines feature a cast iron cylinder head as well as a long cylinder stroke for improved torque. The PSI and Kubota LPG engines feature coil over plug ignition design which eliminates spark plug wires.

The PSI engines feature twin engine balance shafts to reduce engine vibration resulting in smoother and quieter performance.

The Kubota 2.4L diesel cylinder heads feature a helical, "crossflow" design within each cylinder to create additional airflow into the cylinder for added power. The turbocharger is a simple design, but uses a variable waste-gate to ensure the proper amount of boost at all engine speeds. The charge air cooler (intercooler) helps lower emissions and increase power by cooling the hot air as it exits the turbocharger and enters the intake manifold.

Fuel Systems

All engines are EPA emissions compliant. The PSI and Kubota LPG engines feature closed loop emissions regulation systems that continually monitor exhaust and adjust fuel/air mix as necessary. These engines use a mixer carburetor and a vaporizer/regulator to convert fuel from a liquid to a gas.

The Kubota EPA Certified Tier 4 Final diesel fuel system utilizes an electronically controlled, high-pressure common-rail fuel system that sends up to five individual fuel injections per power stroke for maximum power and efficiency while reducing noise levels. A cooled Exhaust Gas Recirculation

(EGR) system recycles a portion of the exhaust to be re-burned and reduce emissions, along with a diesel oxidation catalyst (DOC) that continuously oxidizes particulate matter (soot) with no effect on truck operation.

Transmission

There are two transmission selections available with multiple engine configurations that will handle a wide variety of material handling applications. Both transmissions feature electronic inching (requires no adjustment), electronic shift control, neutral start switch, and anti-restart protection. A single pedal controls both inching and braking. Optional dual inch/brake pedals are available for operators who prefer this design. A 10 micron filter protects the transmission from abrasive contaminants.

The Techtronix 100 features Auto Deceleration through the controlled application of clutch packs, and also reduces tire spin by precisely regulating engine speed during controlled ramp descent.

Cooling System employs a 17" blade pusher-type fan. A high capacity, cross-flow radiator ensures rapid heat dissipation. The sealed cooling system operates at a pressure of 15 psi and includes a coolant recovery tank for visual inspection of coolant level. The transmission oil cooler is integrated into the radiator and is located in the side tank. The optional combi-cooler radiator features an externally mounted transmission oil cooler for increased heat transfer capability. All radiators are soft-mounted for excellent durability.

Drive Axle

The drive axles are designed to withstand heavy duty loads and absorb shock loads. The wheel hubs rotate on large tapered roller bearings. The drive shaft transmits torsion to the drive axle from the engine and transmission. Transmission torque occurs through an industrial hypoid ring gear and pinion differential assembly.

The drive axle is a self contained assembly that is isolated from the transmission by a heavy duty rubber isolator. The axle shafts utilize a "rolled fillet" root

LPG/Dual Fuel Engine Specifications

Engine	PSI 2.4L
Cylinders	4
Camshaft	Overhead Valve
Displacement	143 cu.in/2.4 liter
Torque	121 lb.ft @ 2000 RPM
Horsepower	59 hp

LP Engine Specifications

Engine	Kubota 2.5L
Cylinders	4
Camshaft	Overhead Valve
Displacement	152 cu.in/2.5 liter
Torque	131 lb.ft @ 1000 RPM
Horsepower	59 @ 2500 rpm
Air Filtration	Two stage, Dry Type
Emission Control	Closed Loop

Diesel Engine Specifications

Engine	Kubota 2.4L Turbo Diesel
Cylinders	4
Camshaft	Overhead Valve
Displacement	149 cu.in/2.4 liter
Torque	146 @ 1500 RPM
Horsepower	57hp

spline design for increased resistance to torsion stress. A magnetic sump plug is used to collect any metal particles that are circulating in the axle oil, preventing excessive component wear.

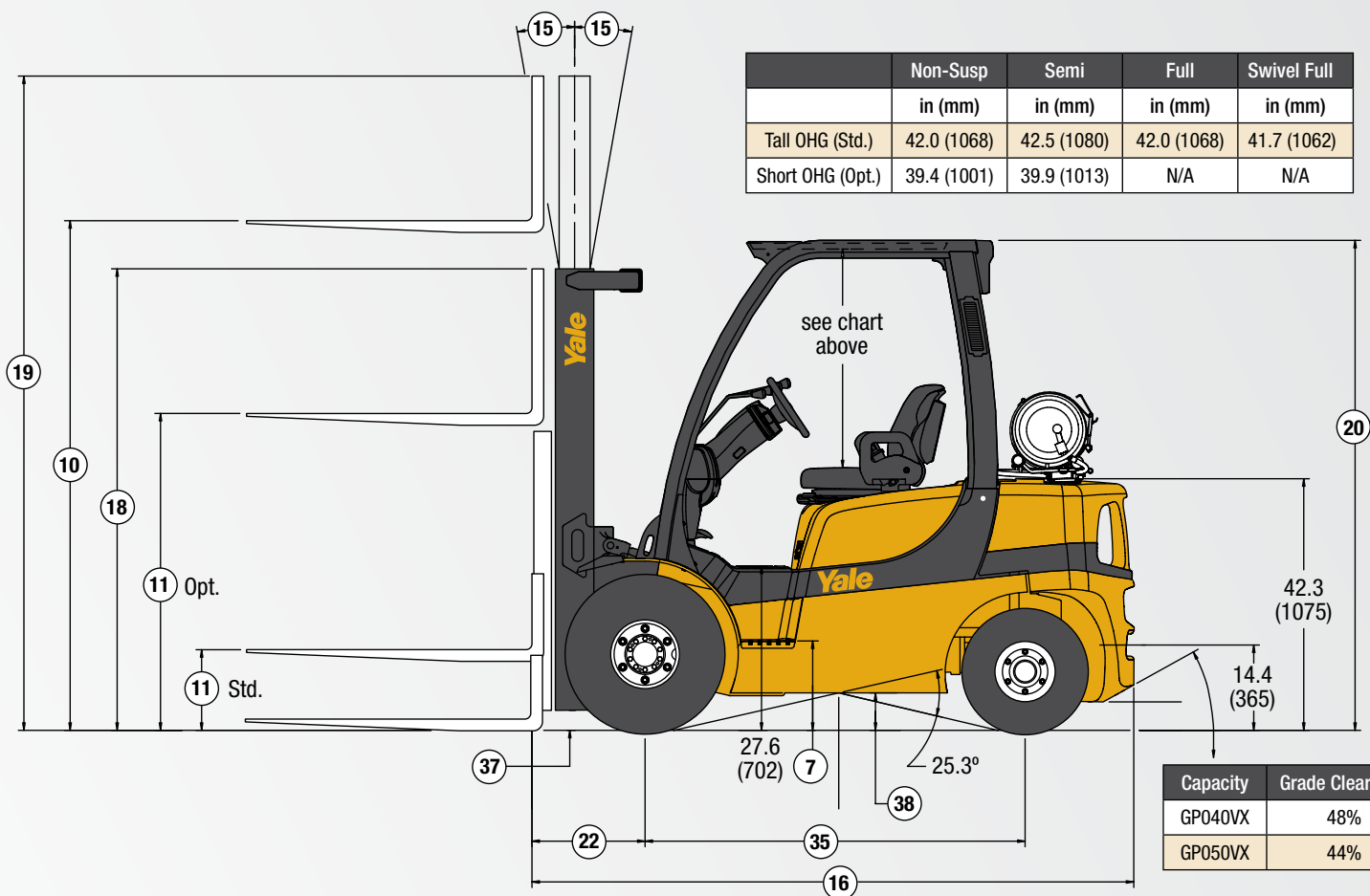
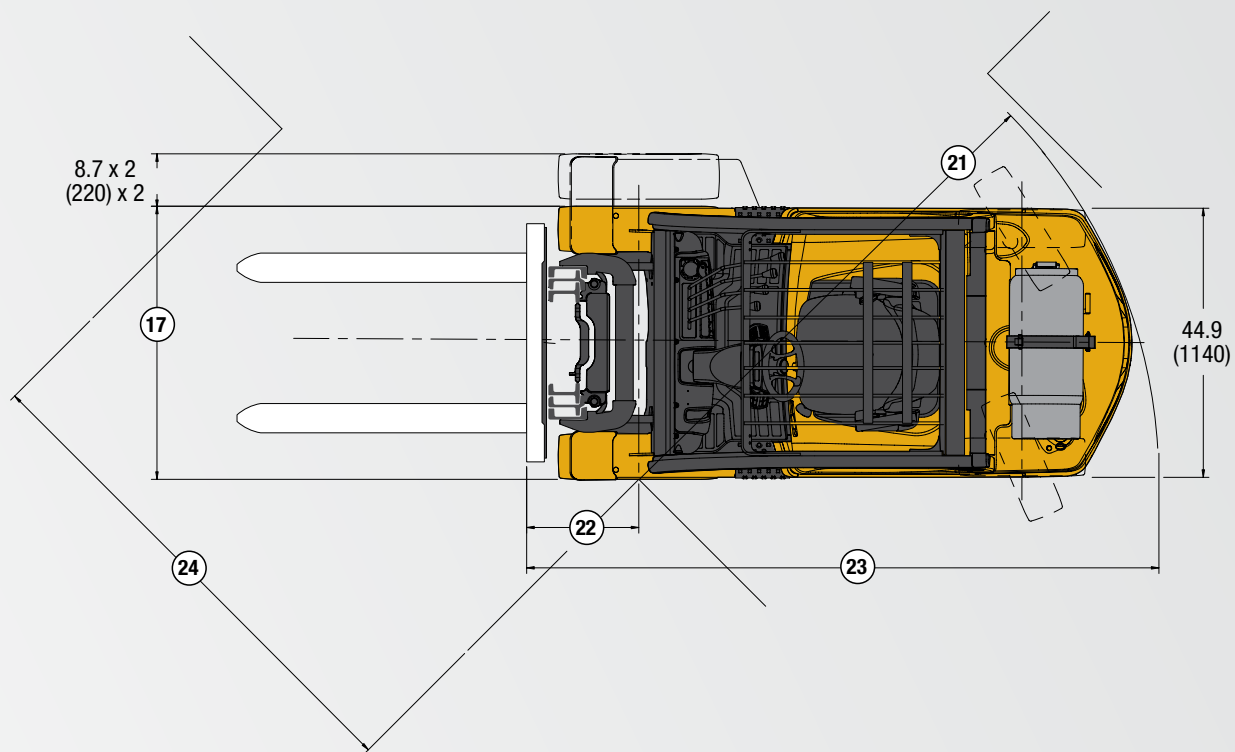
Hydraulic Brakes

Asbestos-free brake linings are bonded to steel shoes and act against cast iron drums. Single circuit master cylinder has a sealed fluid reservoir and features a fluid level sensor which activates

(continued on back)



Truck shown with optional equipment



GENERAL	1	Manufacturer Name		Yale		
	2	Model		GP040VX		
		Engine		PSI 2.4L	Kubota 2.5L	Kubota 2.4L Tier 4 Final
	3	Rated Capacity	lb (kg)	4000 (1814)		
	4	Load Center, Distance	in (mm)	24.0 (610)		
	5	Power Type - LPG, Diesel, Dual Fuel		LPG	Dual Fuel	LPG Diesel
	6	Operator Type		Sit-Down Rider		
	7	Step Height	in (mm)	15.0 (382)		
	8	Tire Type - Cushion, Solid, Pneumatic		Pneumatic		
DIMENSIONS	9	Wheels, Number - Front/ Rear		2x/2		
	10	Lift Height, Top of Fork (TOF)	in (mm)	129 (3292)		
	11	Lift Heights, Standard Limited Free Lift (LFL) w/o LBR (TOF)	in (mm)	5 (140)		
		Lift Heights, Optional Full Free Lift (FFL) w/o LBR (TOF)	in (mm)	61 (1565)		
	12	Standard Carriage Width	in (mm)	42.0 (1067)		
		Forks, Thickness x Width x Length	in	1.6 X 3.9 X 42		
		Forks, Thickness x Width x Length	(mm)	(40 X 100 X 1067)		
	14	Fork Spread, Outside Dimensions	in (mm)	43.3 (1099)		
	15	Mast Tilt Angles, Forward/Backward	degrees	6F/10B		
	16	Length To Face of Forks	in (mm)	98.0 (2486)		
	17	Overall Width, Standard Tread	in (mm)	45.6 (1157)		
		Overall Width, Wide Tread	in (mm)	51.9 (1317)		
	18	Height, Standard Mast - Lowered	in (mm)	86.0 (2170)		
	19	Height, Standard Mast - Extended with LBR	in (mm)	147 (3715)		
		Height, Standard Mast - Extended without LBR	in (mm)	123 (3100)		
PERFORMANCE	20	Height, Standard Overhead Guard	in (mm)	85.0 (2160)		
		Height, Optional Overhead Guard	in (mm)	82.4 (2093)		
	21	Turning Radius, Minimum Outside (OTR)	in (mm)	84.6 (2149)		
	22	Length, Center of Wheel to Face of Forks	in (mm)	18.5 (470)		
	23	Aisle Width, Right Angle Stack (Add Length of Load)	in (mm)	103.1 (2619)		
	24	Equal Aisle, 90-Degree Intersecting Aisle	in (mm)	79.5 (1987)		
	25	Travel Speed, Powershift Transmission RL/NL	mph (km/h)	11.5/11.8 (18.5/19.0)	10.4/10.6 (16.7/17.0)	11.2/11.3 (18.0/18.2)
	26	Lift Speed, Standard 2-Stage LFL RL/NL	ft/min (m/s)	120/124 (.61/.63)	122/126 (.62/.64)	122/126 (.62/.64)
		Lift Speed, Optional 2-Stage FFL RL/NL	ft/min (m/s)	106/110 (.54/.56)	106/112 (.54/.57)	106/112 (.54/.57)
		Lift Speed, Optional 3-Stage FFL RL/NL	ft/min (m/s)	112/116 (.57/.59)	114/120 (.58/.61)	114/120 (.58/.61)
	27	Lowering Speed, Standard 2-Stage LFL RL/NL	ft/min (m/s)	114/98 (.58/.50)		
		Lowering Speed, Optional 2-Stage FFL RL/NL	ft/min (m/s)	98/83 (.50/.42)		
WT.		Lowering Speed, Optional 3-Stage FFL RL/NL	ft/min (m/s)	106/93 (.54/.47)		
	28	Maximum drawbar pull RL/NL	lb (kg)	4980/2315 (2259/1050)	5018/2315 (2276/1050)	5180/2315 (2350/1050)
		Drawbar Pull, Standard Transmission @ 1 mph RL/NL	lb (kg)	4215/2315 (1912/1050)	4297/2315 (1949/1050)	4760/2315 (2160/1050)
	29	Gradeability, Standard Transmission @ 1 mph RL/NL	Percent %	37/32	38/32	42/32
	31	Weight, Standard Truck (2-Stg. LFL) NL	lb (kg)	7654 (3472)		
		Weight, Standard Truck (2-Stg. LFL) RL	lb (kg)	11655 (5286)		
	32	Axle Loading, Static Front/Rear NL	lb (kg)	3929/3725 (1782/1690)		
		Axle Loading, Static Front/Rear RL	lb (kg)	10593/1062 (4805/482)		
TIRES & WHEELS	33	Tire Size, Front		7.00 x 12 - 12		
	34	Tire Size, Rear		6.00 x 9		
	35	Wheelbase	in (mm)	63.9 (1623)		
	37	Ground Clearance, Lowest Point NL (w/RL subtract-6mm)	in (mm)	5.2 (132)		
	38	Ground Clearance, Center of Wheelbase NL	in (mm)	6.3 (160)		
	39	Service Brake - Method of Control/Operation		Foot/Hydraulic		
	40	Parking Brake - Method of Control/Operation		Hand/Mechanical		
POWERTRAIN	41	Battery Type		Maintenance Free		
	42	Volts/Cold Cranking Amps	v/cca	12/475		12/770
	43	Engine, Manufacturer/Model		PSI 2.4L	Kubota 2.5L	Kubota 2.4L
	44	Permanent Output	hp (kw)	59 (44)	59 (44)	57 (43)
	45	Torque @ Rated RPM	ft Lbs (kg/m)	121 (16.7) @ 2700 RPM	131 (18) @ 1000 RPM	146 (20)@ 1500 RPM
	46	Number of Cylinders/Displacement	No/cc (ci)	4/2351 (143)	4/2491 (152)	4/2434 (149)
	47	Transmission Type, Standard		Electronic Powershift		
		Standard Speeds, Forward - Reverse		1-1		
	49	Hydraulic Tank Capacity (Drain and Refill)	gal (liter)	12.1 (45.8)		
	50	Fuel Tank Capacity (Gas & Diesel Powered Units Only)	gal (liter)	13.9 (52.8)		
	51	Auxiliary Hydraulic Pressure Relief for Attachments	PSI (Mpa)	2250 (15.5)		

GENERAL	1	Manufacturer Name		Yale		
	2	Model		GP050VX		
		Engine		PSI 2.4L	Kubota 2.5L	Kubota 2.4L Tier 4 Final
	3	Rated Capacity	lb (kg)	5000 (2268)		
	4	Load Center, Distance	in (mm)	24.0 (610)		
	5	Power Type - LPG, Diesel, Dual Fuel		LPG	Dual Fuel	LPG Diesel
	6	Operator Type		Sit-Down Rider		
	7	Step Height	in (mm)	15.0 (382)		
	8	Tire Type - Cushion, Solid, Pneumatic		Pneumatic		
DIMENSIONS	9	Wheels, Number - Front/ Rear		2x/2		
	10	Lift Height, Top of Fork (TOF)	in (mm)	129 (3292)		
	11	Lift Heights, Standard Limited Free Lift (LFL) w/o LBR (TOF)	in (mm)	5 (140)		
		Lift Heights, Optional Full Free Lift (FFL) w/o LBR (TOF)	in (mm)	61 (1565)		
	12	Standard Carriage Width	in (mm)	42 (1067)		
		Forks, Thickness x Width x Length	in	1.6 X 3.9 X 42		
		Forks, Thickness x Width x Length	(mm)	(40 X 100 X 1067)		
	14	Fork Spread, Outside Dimensions	in (mm)	43.3 (1099)		
	15	Mast Tilt Angles, Forward/Backward	degrees	6F/6B		
	16	Length To Face of Forks	in (mm)	100.7 (2559)		
	17	Overall Width, Standard Tread	in (mm)	45.6 (1157)		
		Overall Width, Wide Tread	in (mm)	51.9 (1317)		
	18	Height, Standard Mast - Lowered	in (mm)	86 (2170)		
	19	Height, Standard Mast - Extended with LBR	in (mm)	147 (3715)		
		Height, Standard Mast - Extended without LBR	in (mm)	123 (3100)		
PERFORMANCE	20	Height, Standard Overhead Guard	in (mm)	85.0 (2160)		
		Height, Optional Overhead Guard	in (mm)	82 (2093)		
	21	Turning Radius, Minimum Outside (OTR)	in (mm)	87.2 (2216)		
	22	Length, Center of Wheel to Face of Forks	in (mm)	18.5 (470)		
	23	Aisle Width, Right Angle Stack (Add Length of Load)	in (mm)	105.7 (2686)		
	24	Equal Aisle, 90-Degree Intersecting Aisle	in (mm)	80.6 (2020)		
	25	Travel Speed, Powershift Transmission RL/NL	mph (km/h)	11.5/11.8 (18.5/19.0)	10.4/10.6 (16.7/17.0)	11.2/11.3 (18.0/18.2)
	26	Lift Speed, Standard 2-Stage LFL RL/NL	ft/min (m/s)	120/124 (.61/.63)	122/126 (.62/.64)	122/126 (.62/.64)
		Lift Speed, Optional 2-Stage FFL RL/NL	ft/min (m/s)	106/110 (.54/.56)	108/112 (.55/.57)	106/112 (.54/.57)
		Lift Speed, Optional 3-Stage FFL RL/NL	ft/min (m/s)	112/116 (.57/.59)	114/120 (.58/.61)	114/120 (.58/.61)
	27	Lowering Speed, Standard 2-Stage LFL RL/NL	ft/min (m/s)	114/98 (.58/.50)		
		Lowering Speed, Optional 2-Stage FFL RL/NL	ft/min (m/s)	98/83 (.50/.42)		
WT.		Lowering Speed, Optional 3-Stage FFL RL/NL	ft/min (m/s)	106/93 (.54/.47)		
	28	Maximum drawbar pull RL/NL	lb (kg)	4952/2249 (2246/1020)	4989/2249 (2263/1020)	5150/2249 (2340/1020)
		Drawbar Pull, Standard Transmission @ 1 mph RL/NL	lb (kg)	4184/2249 (1898/1020)	4268/2249 (1936/1020)	4730/2249 (2150/1020)
	29	Gradeability, Standard Transmission @ 1 mph RL/NL	Percent %	32/28	33/28	36/28
	31	Weight, Standard Truck (2-Stg. LFL) NL	lb (kg)	8399 (3810)		
		Weight, Standard Truck (2-Stg. LFL) RL	lb (kg)	13399 (6078)		
	32	Axle Loading, Static Front/Rear NL	lb (kg)	3776/4623 (1713/2097)		
		Axle Loading, Static Front/Rear RL	lb (kg)	12105/1294 (5491/587)		
TIRES & WHEELS	33	Tire Size, Front		7.00 x 12 - 12		
	34	Tire Size, Rear		6.00 x 9		
	35	Wheelbase	in (mm)	63.9 (1623)		
	37	Ground Clearance, Lowest Point NL (w/RL subtract-6mm)	in (mm)	5.2 (132)		
	38	Ground Clearance, Center of Wheelbase NL	in (mm)	6.3 (160)		
	39	Service Brake - Method of Control/Operation		Foot/Hydraulic		
	40	Parking Brake - Method of Control/Operation		Hand/Mechanical		
POWERTRAIN	41	Battery Type		Maintenance Free		
	42	Volts/Cold Cranking Amps	v/cca	12/475		12/770
	43	Engine, Manufacturer/Model		PSI 2.4L	Kubota 2.5L	Kubota 2.4L
	44	Permanent Output	hp (kw)	59 (44)	59 (44)	57 (43)
	45	Torque @ Rated RPM	ft Lbs (kg/m)	121 (16.7) @ 2700 RPM	131 (18) @ 1000 RPM	146 (20)@ 1500 RPM
	46	Number of Cylinders/Displacement	No/cc (ci)	4/2351 (143)	4/2491 (152)	4/2434 (149)
	47	Transmission Type, Standard		Electronic Powershift		
		Standard Speeds, Forward - Reverse		1-1		
	49	Hydraulic Tank Capacity (Drain and Refill)	gal (liter)	12.1 (45.8)		
	50	Fuel Tank Capacity (Gas & Diesel Powered Units Only)	gal (liter)	13.9 (52.8)		
	51	Auxiliary Hydraulic Pressure Relief for Attachments	PSI (Mpa)	2250 (15.5)		

GP040-050VX MAST DIMENSIONS							
Maximum Fork Height (TOF) †	Overall Lowered Height	Overall Extended Height		Free Lift (TOF)		Approximate Total Weight of Standard Equipped Truck	
		with LBR	without LBR	with LBR	without LBR	GP040VX	GP050VX
in (mm)	in (mm)	in (mm)	in (mm)	in (mm)	in (mm)	lbs (kg)	lbs (kg)
2-STAGE LIMITED FREE LIFT (LFL) Hi-Vis™2 MAST							
129 (3292)	86 (2170)	178 (4515)	123 (3100)	5 (140)	5 (140)	7654 (3472)	8399 (3810)
2-STAGE FULL FREE LIFT (FFL) Hi-Vis™ MAST							
130 (3302)	86 (2170)	179 (4525)	154 (3910)	37 (950)	61 (1565)	7692 (3489)	8437 (3827)
3-STAGE FULL FREE LIFT (FFL) Hi-Vis™2 MAST							
171 (4350)	80 (2020)	220 (5570)	195 (4935)	29 (750)	54 (1390)	7934 (3599)	8679 (3937)
189 (4800)	84 (2120)	237 (6020)	213 (5385)	35 (900)	60 (1540)	8012 (3634)	8757 (3972)
194 (4950)	86 (2170)	243 (6170)	218 (5535)	37 (950)	62 (1590)	8037 (3645)	8782 (3983)
200 (5100)	90 (2270)	249 (6320)	224 (5685)	41 (1050)	66 (1690)	8083 (3666)	8828 (4004)
218 (5550)	96 (2420)	267 (6770)	242 (6135)	47 (1200)	72 (1840)	8165 (3704)	8910 (4042)

† Lift heights over 171.5" (4356 mm) maximum fork height are considered highlifts and require reduced capacity and restricted back tilt. Total approximate weights listed include mast, standard carriage, load backrest (LBR) and 70 lbs. LPG tank and tank bracket.



an indicator light located on the instrument panel. Independent, hand adjustable parking brake with push-button release has audible alarm.

Wet Disc Brakes

Optional oil-cooled wet disc brakes provide excellent stopping power with an extremely long service life. The brake cooling oil circulates within the axle to provide consistent braking performance with no fade or change in pedal effort or travel, throughout the entire shift and beyond.

Hydrostatic Power Steering provides responsive control and eliminates mechanical linkages for reduced surface shock and simplified maintenance. The steering wheel is 12 inches in diameter with a textured surface grip and spinner knob, and requires only four turns lock-to-lock. The center mounted steer cylinder is located within the confines of the steer axle for protection.

Steer Axle is constructed of cast steel and is rubber shock mounted to the frame for reduced wear and vibration. The Continuous Stability System (CSS™) enhances lateral truck stability through reduced steer axle articulation, while simultaneously allowing travel across various surfaces.

Chassis designed by Finite Element Analysis (FEA) methods contains a rugged, unitized frame structure with a low step for simple entrance to the operator's compartment. Ergonomically designed overhead guard is bar type for great visibility and reduced noise.

Operator's Compartment features cowl-mounted hydraulic control levers positioned on the right side of the steering column. Optional Accutouch electro-hydraulic controls are integrated into the operator's right-side armrest allowing superior ergonomic actuation. A pedal arrangement with a large, single inch/brake pedal is standard. Tilt cylinders are located beneath the floor for uncluttered space. Rubber floor mat reduces noise and vibration. Floorplate can be removed without tools for excellent

service access. Low step height and a convenient hand grip provide easy entry and exit to and from the truck.

Intellix VSM acts as a master truck controller, providing extensive monitoring and control of truck functions and systems. CANbus technology reduces wiring complexity and enables comprehensive communications between truck systems. The ergonomically positioned dash display transmits continual feedback to the operator and allows for communication of service codes. Comprehensive on-board diagnostics enable quick and easy troubleshooting. The electrical system features sealed connectors and Hall Effect sensors for superior dependability.

Hydraulic System incorporates a gear type pump, cast iron body for quiet efficiency. The system is protected from overloads by a main relief valve for the lift circuit and a secondary relief valve for tilt and auxiliary functions. Oil is double filtered through a 100 mesh suction line strainer and 10 micron return line filter. The hydraulic tank is integrated into the frame. An emergency lowering valve is provided to allow the load to be lowered in the event of power loss. O-ring face seal fittings are used in all high pressure hydraulic connections.

Masts are available in 2-stage LFL (Hi-Vis™₂), 2-stage FFL (Hi-Vis™), and 3-stage FFL (Hi-Vis™₂) models. Mast features flush-faced design with geometrically matched, angled load roller bearings which are canted, yet provide full-face roller contact. The mast front rail flange angle coupled with the inverted "J" inner channel and three degree mast rollers significantly reduce channel and roller wear. "J-hook" mast mounting system allows for convenient mast installation and removal. A bronze phenolic mast pivot bushing with woven reinforcement offers high load carrying capability with outstanding durability.

Options

PSI 2.4L dual fuel engine
Kubota 2.5L LPG engine
Kubota 2.4L Tier 4 Final turbo diesel engine
Techtronix 100 transmission
– Auto Deceleration System
– Controlled power reversal feature
– Controlled rollback on ramps

Powertrain protection with engine shutdown system
Premium monitoring package
High air intake with precleaner
Accumulator
Keyless start (w/auxiliary key switch)
Various light packages
– Two brake/back-up high intensity LED lights
– Two front and one rear halogen or LED work lights
– Two front, one rear halogen or LED work light and two brake/tail/back-up high intensity LED lights
Traction speed limiter
Heavy duty anti-clog radiator
Heavy duty combi-cooler radiator
Swing-out, drop-down EZ-tank bracket
Accutouch mini-lever electro-hydraulic control
Return-to-set tilt
Rear drive handle with horn button
High-visibility non-cinch seat belt with or without interlock
Polycarbonate overhead guard rain top
Swivel full-suspension seat
Foot Directional Control pedal
Extension tubes with or without quick disconnects
10° forward/6° backward tilt
Operator password
Load weight display
Impact monitor
Seaside directional control
Integral sideshifting fork positioner
Dual side view mirrors
Audible alarm - reverse actuated 82-102 db(A) self-adjusting
Visible alarm amber strobe light - continuous activated, overhead guard mounted
Paper applications kit
Operator pre-shift checklist
Oil-cooled wet disc brakes
Pneumatic shaped solid tires
Radial tires
Dual drive tires
Cab with or without air conditioning
Dual pedal inch/brake
Vented hood
Overhead exhaust
Integral sideshifter
UL options of G, GS, D, LPS or DS



YALE MATERIALS HANDLING CORPORATION

P.O. Box 7367, Greenville, NC 27835-7367

www.yale.com

Yale is a Registered Trademark and  is a Registered Copyright.
©Yale Materials Handling Corporation 2019. All Rights Reserved.

Manufactured in our own ISO 9001 and 14001 Registered Facilities

2219-2G 8/2019 All trucks shown with optional equipment.

Truck performance may be affected by the condition of the vehicle, how it is equipped and the application. Consult your Yale® Industrial Truck Dealer if any of the information shown is critical to your application. Specifications are subject to change without notice.

This truck meets all applicable mandatory requirements of ANSI B56.1 Safety Standard for Powered Industrial Trucks at the time of manufacture. Classified by Underwriters' Laboratories, Inc., as to fire and electric shock hazard only for Type E industrial trucks.

The Yale® products included in this document may be covered by US patent 6,684,148 and other patents pending.