

# 1255

## TELEHANDLER

**JLG**  
reachingout®



### Performance

Rated Capacity	12,000 lb	5,443 kg
Maximum Lift Height	55 ft	16.76 m
Load at Max Height	5,000 lb	2,268 kg
Maximum Forward Reach	42 ft	12.8 m
Load at Max Reach	3,500 lb	1,588 kg
Frame Leveling	10°	
Lift Speed (boom retracted)		
Up	16 sec	
Down	13 sec	
Boom Speed		
Extended	18 sec	
Retracted	15 sec	
Top Travel Speed (4-Speed)	20 mph	32 kph
Drawbar Pull (loaded)	25,400 lb	113 kN
Outside Turning Radius	14 ft	4.3 m
Operating Weight	33,960 lb	15,404 kg

### Standard Specifications

#### Engine

Make and Model	Cummins QSF3.8L Tier 4 F	
No. of Cylinders	4	
Displacement	231.9 cu in.	3.8 L
Gross Power Basic	130 hp	97 kW
Maximum Torque @ 1500 rpm	360 lb-ft	488 Nm
Fuel Tank Capacity	38.3 gal	145 L

#### Transmission

Powershift 4-speed forward and 3-speed reverse.

#### Axles

Trunnion mounted planetary 45° steer axles. Integral steer cylinder.  
High bias limited slip differential on front axle.

#### Brakes

Service brakes are inboard wet disc brake on front and rear axles.  
Parking brakes are wet disc spring-applied hydraulic release on front axle.

#### Tires

Standard	400/75-28
Optional	Foam-Filled or Solid

#### Cab

- Certified ROPS/FOPS structure
- Horn
- Tilt & Declutch on Joystick
- Adjustable Seat
- Single Joystick Controls
- Anti-Theft

#### Steering 4-Wheel

Hydraulic power steering with manual backup.  
Operator selectable 4-wheel circle, 4-wheel crab, 2-wheel front.

#### Instruments

- Volt Meter
- Engine Oil Pressure Gauge
- Fuel Gauge
- Hourmeter
- Temperature Gauge
- DEF Gauge

#### Hydraulic System-Implement

Capacity	49.9 gal	189 L
----------	----------	-------

Load sense piston pump. Auxiliary hydraulics used for all attachments equipped with cylinders or other hydraulic components.

### Accessories & Options

- Enclosed Cab
- Auxiliary Electrics
- Road Lights
- Air Conditioning
- Work Lights
- Rotating Beacon
- Hydraulic Coupler
- Fenders
- Brick Guards
- Arctic Package
- Multi-Function Display with Reversing Camera
- Ride Control
- Reverse Sensing System
- Boom Brushes
- Secondary Steering
- Wiper Package
- Positive Air Shut Off
- Non-Marking Tires

### Attachments

Standard Carriage	50 in. 60 in. 72 in.	1.3 m 1.5 m 1.8 m
Side-Tilt Carriage	50 in. 60 in. 72 in.	1.3 m 1.5 m 1.8 m
Swing 90° or 180° Carriage	72 in.	1.8 m
Dual Fork Positioning Carriage	50 in.	1.3 m
Side-Shift Carriage	50 in.	1.3 m
Tower	8 ft	2.4 m
Tower with Side Tilt	8 ft	2.4 m
Pallet Forks	2.36 in. x 5 in. x 48 in. 2.00 in. x 6 in. x 72 in.	60 mm x 127 mm x 1.2 m 51 mm x 152 mm x 1.8 m
Lumber Forks	2.00 in. x 7 in. x 60 in. 2.36 in. x 6 in. x 60 in.	51 mm x 178 mm x 1.5 m 60 mm x 152 mm x 1.5 m
Cubing Forks	2 in. x 2 in. x 48 in.	51 mm x 51 mm x 1.2 m
Fork Extensions	90 in.	2.3 m
Material Bucket	72 in., 1.0 cu yd 96 in., 1.5 cu yd 102 in., 2.0 cu yd	1.8 m, 0.76 m³ 2.4 m, 1.15 m³ 2.6 m, 1.53 m³
Grapple Bucket	96 in., 1.75 cu yd	2.4 m, 1.34 m³
Truss Boom	3 ft (winch), 4,000 lb Capacity	0.9 m, 1,814 kg Capacity
Truss Boom	12 ft, 2,000 lb 15 ft, 2,000 lb 12 ft with winch, 2,000 lb	3.7 m, 907 kg 4.6 m, 907 kg 3.7 m, 907 kg
Fork-Mounted Work Platform	8 ft, 6,000 lb Capacity	1.8 m, 2,722 kg Capacity
Pipe Grapple	72 in., 6,000 lb Capacity	2.4 m, 2,722 kg Capacity
Bucket-Fork Mounted	60 in., 1.3 cu yd	1.5 m, 1.0 m³
Material Handling Arm	4,000 lb Capacity	1,814 kg Capacity
Trash Hopper	72 in., 1.9 cu yd	1.8 m, 1.5 m³
Lifting Hook-Fork Mounted		
Lifting Hook-Coupler Mounted		
Fork-Mounted Extendable Truss		

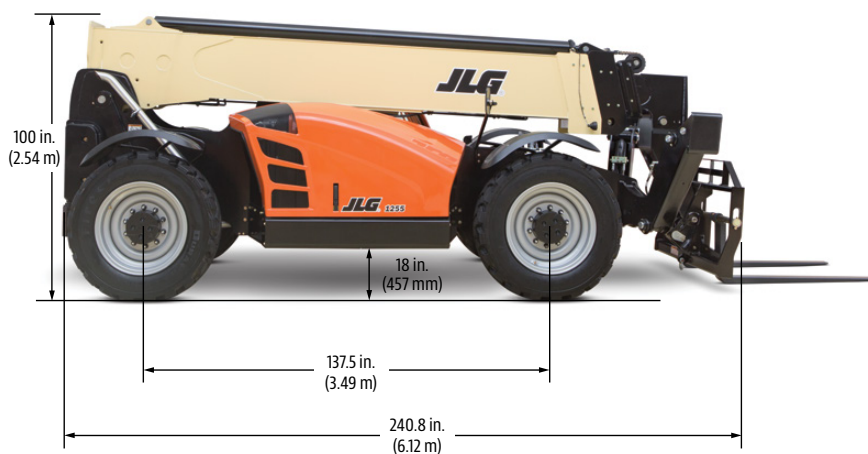
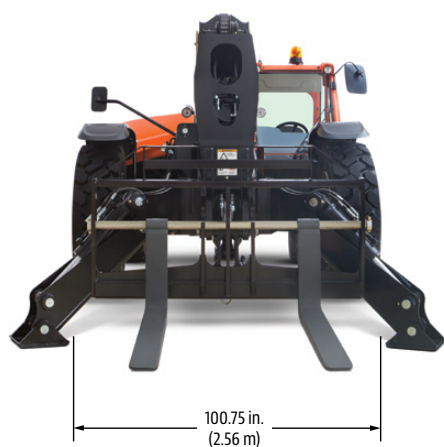
# 1255

## TELEHANDLER

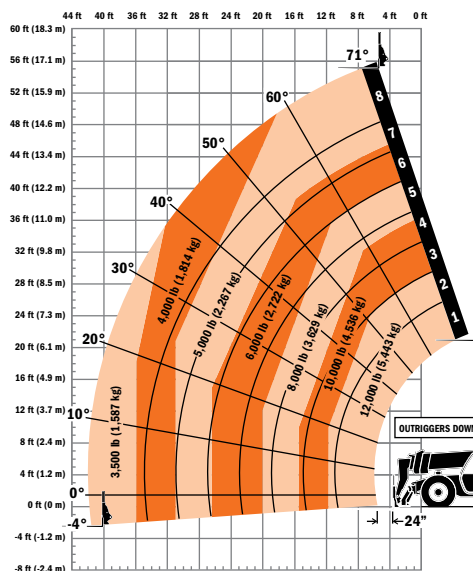
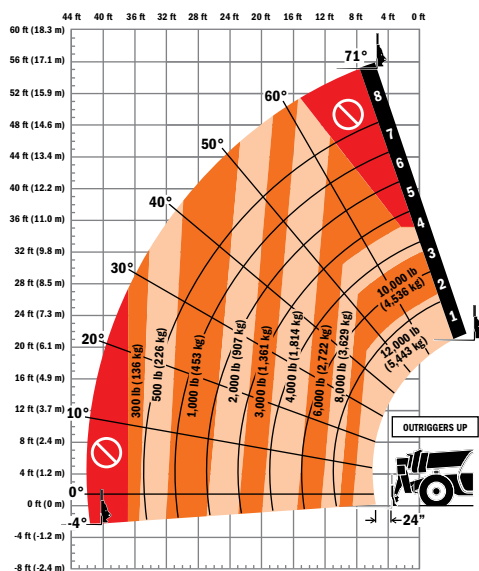


### Dimensions

All dimensions are approximate.



### Load Chart



### The JLG "1, 2 & 5" Warranty

We provide coverage for one (1) full year on the entire machine, two (2) full years or 2,000 hours on the drivetrain and cover all specified major structural components for five (5) years. Due to continuous product improvements, we reserve the right to make specification and/or equipment changes without prior notification.

Part No.: 3132244  
RT11802  
Printed in USA



**JLG Industries, Inc.**  
1 JLG Drive  
McConnellsburg, PA 17233-9533  
Telephone 717-485-5161  
Toll-free in US 877-JLG-LIFT  
Fax 717-485-6417  
[www.jlg.com](http://www.jlg.com)

**An Oshkosh Corporation Company**

12054

TELEHANDLER

SKYTRAK



## ACCESSORIES & OPTIONS

- 74 hp Engine
- Air Conditioning
- Air Shut Off Valve
- Arctic Package
- Boom Prop
- Enclosed Cab
- Fenders
- Load Stability Indication (LSI)
- Multi-Reverse Camera System
- Reverse Sensing System
- Road Lights
- Seatbelt Engagement & Operator Presence
- White Noise Back-up Alarm
- Work Lights

## ATTACHMENTS

Standard Carriage	50-in	1.3-m
	60-in	1.5-m
	72-in	1.8-m
	96-in	2.4-m
Side-Tilt Carriage	50-in	1.3-m
	60-in	1.5-m
	72-in	1.8-m
Swing 90° Carriage	72-in	1.8-m
Side-Shift Carriage	48-in	1.2-m
Dual Fork Positioning Carriage	50-in	1.3-m
Pallet Forks	2.36-in x 5-in x 48-in	60-mm x 127-mm x 1.2-m
	2.36-in x 5-in x 60-in	60-mm x 127-mm x 1.5-m
	2.00-in x 6-in x 72-in	51-mm x 152-mm x 1.8-m
	2.00-in x 7-in x 60-in	51-mm x 178-mm x 1.5-m
Lumber Forks	2.36-in x 6-in x 60-in	60-mm x 152-mm x 1.5-m
	2-in x 2-in x 48-in	51-mm x 51-mm x 1.2-m
Cubing Forks	72-in, 1.0-cu yd	1.8-m, 0.76-m <sup>3</sup>
	96-in, 1.5-cu yd	2.4-m, 1.15-m <sup>3</sup>
	102-in, 2.0-cu yd	2.6-m, 1.53-m <sup>3</sup>
Material Bucket	3-ft with winch, 4,000-lb capacity	.9-m, 1,814-kg
	12 ft, 2,000-lb capacity	3.7-m, 907-kg capacity
	15-ft, 2,000-lb capacity	4.6-m, 907-kg capacity
	12-ft with winch, 2,000-lb capacity	3.7-m, 907-kg capacity
Fork Mounted Work Platform	8-ft, 1,000-lb capacity	2.4-m, 455-kg capacity
Lifting Hook, Fork Mounted		
Lifting Hook, Coupler Mounted		
Pipe Grapple	72-in, 2,000-capacity	1.8-m, 907-kg capacity
Fork Mounted Extendable Truss	8,000-lb capacity	3,629-kg capacity

## STANDARD SPECIFICATIONS

### Performance

Rated Capacity	12,000-lb / 5,443-kg
Maximum Lift Height	53-ft 2-in / 16.2-m
Load at Max Height*	5,000-lb / 2,268-kg
Maximum Forward Reach	38-ft 10-in / 11.8-m
Load at Max Reach*	3,500-lb / 1,588-kg
Frame Leveling	10 Degrees
Lift Speed Up	17 seconds
Lift Speed Down	16 seconds
Boom Speed Extend	16 seconds
Boom Speed Retract	15.5 seconds
Top Travel Speed	18.2 mph / 29.3 km/h
Drawbar Pull	30,000-lb / 133.5-kN
Outside Turning Radius	166-in / 4.21-m
Operating Weight	30,100-lb / 13,653-kg

\*With outriggers down

### Engine

Make and Model	Cummins F3.8L
No. of Cylinders	4
Displacement	231.9-cu in / 3.8 L
Gross Power Basic	110 hp / 82 kW @ 2,500 rpm
Maximum Torque @ 1,500 rpm	348-lb / ft / 472 Nm
Fuel Tank Capacity	35 gal / 132.5 L

### Transmission

Powershift.  
4-speed forward and 3-speed reverse.

### Axles

Full-time planetary 4-wheel drive.  
Oscillating rear axle with Stabil-Trak system.

### Brakes

Hydraulically actuated inboard wet disc brakes.  
Emergency brake.

### Tires

Standard	400/75-28 Pneumatic
Optional	Foam-Filled, Non-Marking (Pneumatic or Foam-Filled) 17.5 x 25 Pneumatic or Foam-Filled, 360/85-28 Solid

### Cab

- Adjustable suspension seat with retractable 3-in seat belt
- ClearSky Smart Fleet™ Hardware (CS550)
- Certified ROPS/FOPS structure
- Integrated arm rest
- LED Motion / Amber Beacon (CS550)
- Rear view mirrors
- Single joystick controls

### Steering 4-Wheel

Power steering.  
Operator selectable 4-wheel circle, 4-wheel crab, 2-wheel front.

### Instruments

- DEF gauge
- Engine oil pressure gauge
- LCD Diagnostic screen
- Fuel gauge
- Hourmeter
- Tachometer
- Temperature gauge
- Voltmeter

### Hydraulic System-Implement

Capacity	54 gal / 204 L
----------	----------------

Piston pump.  
Max Auxiliary Flow to Boom Head 19.6 gpm / 74.21 lpm  
Variable flow, load sensitive hydraulic system.  
Load holding valves on frame level, stabilizers, attachment tilt, extend and lift cylinders.  
Auxiliary hydraulics used for all attachments equipped with cylinders or other hydraulic components. Consists of valves, controls and hydraulic lines.

# 12054

TELEHANDLER

**SKYTRAK**

## DIMENSIONS

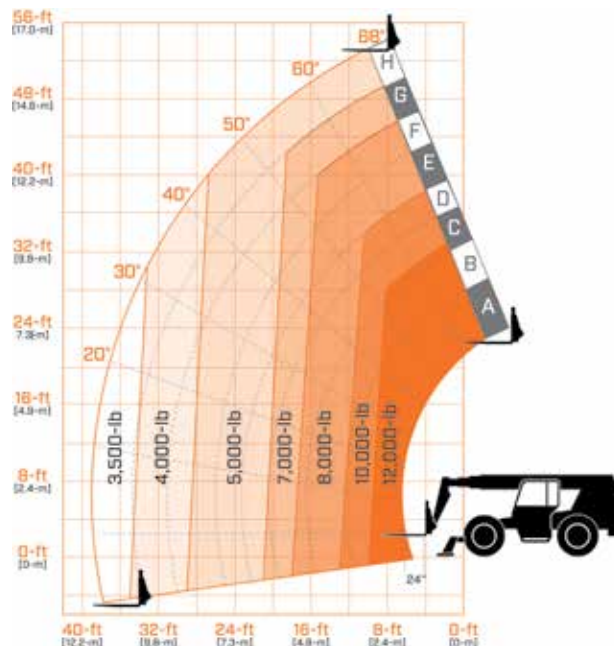
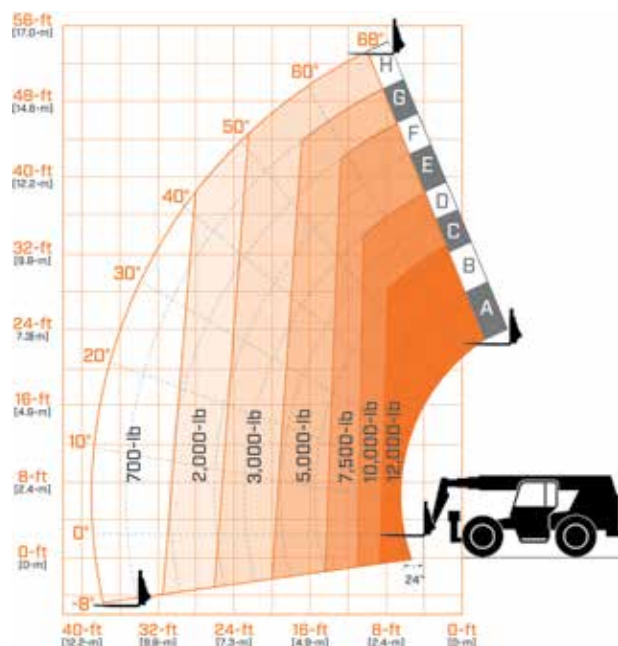
All dimensions are approximate



- A.** Machine Length 21-ft / 6.4-m
- B.** Machine Width 8-ft 6-in / 2.59-m
- C.** Machine Width Outriggers Down 13-ft 1-in / 3.98-m

- D.** Wheelbase 10-ft / 3.04-m
- E.** Machine Height 8-ft 4-in / 2.54-m
- F.** Ground Clearance 18-in / 457-mm

## LOAD CHART



We provide coverage for one (1) full year on the entire machine, two (2) full years or 2,000 hours on the drivetrain and cover all specified major structural components for five (5) years. Due to continuous product improvements, we reserve the right to make specification and/or equipment changes without prior notification.



**JLG INDUSTRIES, INC.**  
Toll-free US 877-JLG-LIFT  
**JLG.com**

An Oshkosh Corporation Company



# SJ1256 THS

## TELEHANDLER



### KEY FEATURES

- 12,000 lbs (5,443 kg) Maximum lift capacity
- 56' 3" (17.14 m) Maximum lift height
- 6,000 lbs (2,722 kg) Capacity @ maximum lift height (no outriggers)
- 7,000 lbs (3,175 kg) Capacity @ maximum lift height (on outriggers)
- 42' 6" (12.95 m) Maximum forward reach
- 1,000 lbs (454 kg) Capacity @ maximum forward reach (no outriggers)
- 3,500 lbs (1,588 kg) Capacity @ maximum forward reach (on outriggers)
- Tier 4 final 107hp/320 lb-ft Deutz TCD 3.6L engine
- 22,500 lbs Drawbar pull
- 3 Speed Dana powershift transmission & Dana axles
- Yoke mounted lifting hook
- 48" Quick attach, floating pin carriage
- Pallet forks, 2.25" x 5" x 48", 12,000 lbs capacity

### TIRE OPTIONS

- Airless solid rubber 14 x 24
- Non-marking foam-filled 14 x 24 16PR rough terrain
- Non-marking airless solid rubber 14 x 24

### STANDARD FEATURES

- Axle mount outriggers
- Auxiliary hydraulics
- Engine block heater
- Quick attach carriage mount
- Rear window with wiper
- Side window
- Suspension seat
- Single multifunction pilot operated joystick control
- In-cab engine multifunction display
- Hydraulic test ports
- Lockable in-cab storage box
- Rear towing hitch pin
- Fiberglass engine cowling
- Steel component and access covers
- 2-Year Gold Leaf Warranty (5-year structural warranty)

### FORK OPTIONS

- Pallet forks, 2.25" x 5" x 48", 60" or 72", 12,000 lbs capacity
- Fully tapered forks, 1.75" x 7" x 48", 12,000 lbs capacity
- Block forks, (set of 6) 2" x 1.5" x 46", 9,000 lbs capacity

† Standard lead times may be increased when optional equipment is added, consult factory.  
‡ Foam-filled tires, standard carriage only. Optional equipment will increase weight.

# SJ1256 THS TELEHANDLER

12,000 lbs (5,443 kg) capacity, 56' 3" (17.14 m) maximum lift height

## SPECIFICATIONS

## SJ1256 THS

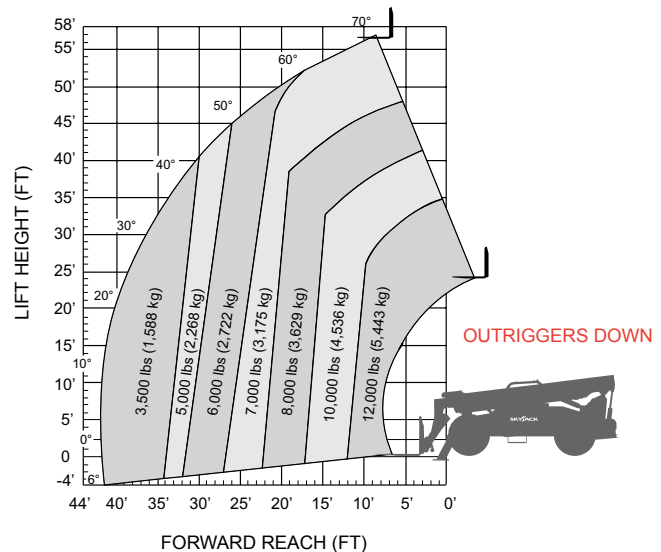
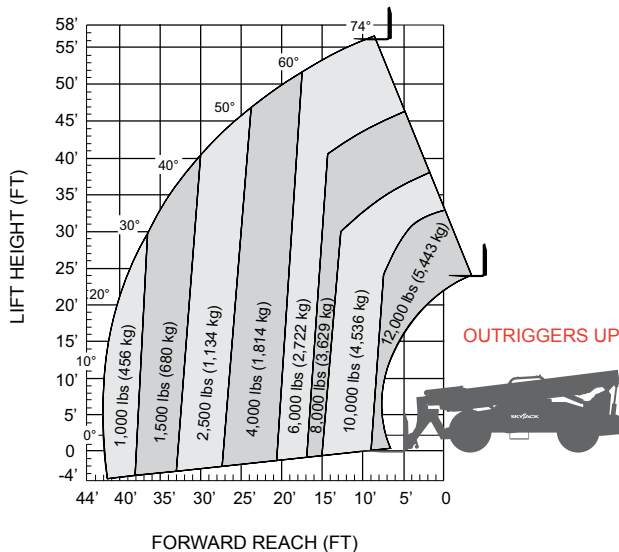
Maximum Lift Capacity	12,000 lbs (5,443 kg)
Maximum Lift Height	56' 3" (17.14 m)
Rated Lift Capacity @ Maximum Height	6,000 lbs (2,722 kg)
Rated Lift Capacity @ Max Height w. O/R	7,000 lbs (3,175 kg)
Maximum Forward Reach	42' 6" (12.95 m)
Rated Lift Capacity @ Maximum Reach	1,000 lbs (454 kg)
Rated Lift Capacity @ Max Reach w. O/R	3,500 lbs (1,588 kg)
Overall Length - Less Forks	23' 1" (7.03 m)
Overall Height - Stowed	8' 6" (2.59 m)
Overall Width	8' 5" (2.56 m)
Ground Clearance	19" (48.26 cm)
Turning Radius - Outside	173" (4.39 m)
Operating Weight	36,625 lbs (16,613 kg)
Engine	107hp / 320 lb-ft Deutz TCD 3.6L T4F
Max Travel Speed - Forward	15 mph (24 km/h)
Drawbar Pull	22,500 lbs
Transmission	Dana Powershift, 3 Speeds F/R
Axles	Dana
Steering	3 mode (Front Wheel, 4 Wheel, Crab)
Tires	Foam-Filled 14 x 24 16PR Grip Lug
Fuel Tank Capacity	35 gal. (132 L)
Hydraulic Reservoir	43.85 gal. (166 L)

## OPTIONS

- Closed cab (adds front and top window, sliding side window, wipers, full door, heater/defroster, operator fan)
- Air conditioning (closed cab only)
- Premium joystick
- Back up sensor
- Backup sensor and camera
- Service convenience package (remote axle grease points & clean drain engine oil pan valve)
- Cold weather package (cold start engine oil, 50/50 antifreeze mix, battery blanket & hyd. tank heater)
- Four wheel fenders
- Road light package (2 front headlights, front & rear turn signals, tail lights, brake lights)
- Work light package (2 front facing & 2 rear facing halogen work lights)
- Boom light package (2 boom mounted LED work lights)
- Rotating beacon
- Positive air shut-off valve
- Reserve brake system
- Pintle hitch (in lieu of standard hitch pin)
- Non-destructive testing
- ELEVATE telematics
- Warranty Options (3-year or 5-year plans available)

## QUICK ATTACH CARRIAGES/ATTACHMENTS

- 48", 60" or 72" Floating pin carriage, 12,000 lbs capacity
- 48", 60" or 72" Floating pin, side tilt carriage, 11,000 lbs capacity
- 72" Floating pin, swing carriage, 11,000 lbs capacity
- 53" Fork positioner, 12,000 lbs capacity
- 2' High capacity jib boom, 10,000 lbs capacity
- 12' or 15' Truss boom, 2,000 lbs capacity
- 1.75 Cubic yard bucket, 4,300 lbs capacity



**Skyjack Head Office**  
 55 Campbell Rd. Guelph, ON Canada N1H 1B9  
 Sales Inquiries: 1-877-755-4387 (1-877-SJLIFTS)  
 Main Switchboard: 1-800-265-2738  
 Phone: 519-837-0888  
 Fax: 519-837-8104  
 Email: skyjack@skyjack.com

[www.skyjack.com](http://www.skyjack.com)

**IMPORTANT** - Machine design complies with ANSI/ITSDF B56.6-2016 stability requirements for rough terrain forklifts. Rated capacities shown are with machine on firm level ground, steered straight with frame level and on properly inflated tires. Read boom angle and boom extension, then determine allowable load from chart. Do not exceed rated loads as dangerous and unstable machine conditions will result. Always travel with boom retracted in the lowest possible position.

**SKYJACK**  
 simply reliable