



## ACCESSORIES & OPTIONS

- Air Conditioning
- Air Shut-off Valve
- Arctic Package
- Auxiliary Electrics
- Boom Prop
- Brick Guards
- Enclosed Cab
- Fenders
- Hydraulic Coupler
- LED Worklight Package
- Load Stability Indication (LSI)
- Multifunction Display with Multi-Reverse Camera System
- Reverse Sensing System
- Ride Control
- Road Light Package
- Seatbelt Engagement & Operator Presence
- White Noise Back-up Alarm
- Wiper Package
- Work Lights

## ATTACHMENTS

Standard Carriage	50-in 1.3-m 60-in 1.5-m 72-in 1.8-m 96-in 2.4-m	
Side-Tilt Carriage	50-in 1.3-m 60-in 1.5-m 72-in 1.8-m	
Swing 90° Carriage	72-in 1.8-m	
Swing 180° Carriage	72-in 1.8-m	
Dual Fork Positioning Carriage	50-in 1.3-m 72-in 1.8-m	
Side-Shift Carriage	48-in 1.2-m	
Tower with Side Tilt	8-ft 2.4-m	
Pallet Forks	2.36-in x 4-in x 48-in 2.36-in x 5-in x 48-in 2.36-in x 5-in x 60-in 2-in x 6-in x 72-in 2.36-in x 5-in x 96-in	60-mm x 102-mm x 1.2-m 60-mm x 127-mm x 1.2-m 60-mm x 127-mm x 1.5-m 51-mm x 152-mm x 1.8-m 60-mm x 127-mm x 2.4-m
Lumber Forks	2.00-in x 7-in x 60-in 2.36-in x 6-in x 60-in 2-in x 2-in x 48-in	51-mm x 178-mm x 1.5-m 60-mm x 152-mm x 1.5-m 51-mm x 51-mm x 1.2-m
Cubing Forks	72-in, 6,000-lb Capacity	
Pipe Grapple	72-in, 1.0-cu yd 96-in, 1.5-cu yd 102-in, 2.0-cu yd	1.8-m, 0.76-m <sup>3</sup> 2.4-m, 1.15-m <sup>3</sup> 2.6-m, 1.53-m <sup>3</sup>
Material Bucket	12-ft, 2,000-lb 15-ft, 2,000-lb 3-ft w/ winch, 4,000-lb Capacity 12-ft w/ winch, 2,000-lb Capacity	3.7-m, 907-kg 4.6-m, 907-kg 0.9-m, 1,814-kg Capacity 3.7-m, 907-kg
Truss Boom	8-ft, 1,000-lb Capacity	2.4-m, 455-kg Capacity
Fork Mounted Work Platform		
Lifting Hook-Fork Mounted		
Lifting Hook-Coupler Mounted		
Fork Mounted Extendable Truss		
Sheet Material Handler		

## STANDARD SPECIFICATIONS

### Performance

Rated Capacity	10,000-lb / 4,536-kg
Maximum Lift Height	55-ft / 16.76-m
Load at Max Height*	5,000-lb / 2,268-kg
Maximum Forward Reach	42-ft / 12.8-m
Load at Max Reach*	3,000-lb / 1,361-kg
Frame Leveling	10 Degrees
Lift Speed (boom retracted) Up	14 seconds
Lift Speed (boom retracted) Down	11 seconds
Boom Speed Extended	16 seconds
Boom Speed Retracted	15 seconds
Top Travel Speed (4-Speed)	20 mph / 30 kph
Drawbar Pull (loaded)	25,400-lb / 113-kN
Outside Turning Radius	14-ft / 4.3-m
Operating Weight	31,559-lb / 14,315-kg

\*Outriggers are required to achieve stated capacity

### Engine

Make and Model	Cummins F3.8L
No. of Cylinders	4
Displacement	231.9-cu in / 4.5 L
Gross Power Basic	134 hp / 100 kW
Maximum Torque @ 1500 rpm	360-lb/ft / 488 Nm
Fuel Tank Capacity	38.3 gal / 145 L

### Transmission

Powershift 4-speed forward and 3-speed reverse.

### Axles

Trunnion mounted planetary 55° steer axles. Integral steer cylinder. High bias limited slip differential on front axle.

### Brakes

Service brakes are inboard wet disc brake on front and rear axles. Parking brakes are wet disc spring-applied hydraulic release on front axle.

### Tires

Standard	400/75-28
Optional	Foam-Filled, Solid, Non-marking (Pneumatic, Foam-Filled or Solid), Pneumatic 14 x 24-16PR

### Cab

- Adjustable suspension seat
- Anti-theft
- Certified ROPS/FOPS structure
- Clearsky Smart Fleet™ Hardware (CS550)
- Horn
- Integrated arm rest
- LED motion/amber beacon (CS550)
- Single joystick controls
- Tilt on joystick

### Steering 4-Wheel

Power steering.  
Operator selectable 4-wheel circle, 4-wheel crab, 2-wheel front.

### Instruments

- DEF gauge
- Engine oil pressure gauge
- Fuel gauge
- Hour meter
- Temperature gauge
- Volt meter

### Hydraulic System-Implement

Capacity	48.6 gal / 184 L
----------	------------------

Max. auxiliary flow to the boom head 25 gpm/95 lpm. Load sense piston pump. Auxiliary hydraulics used for all attachments equipped with cylinders or other hydraulic components.

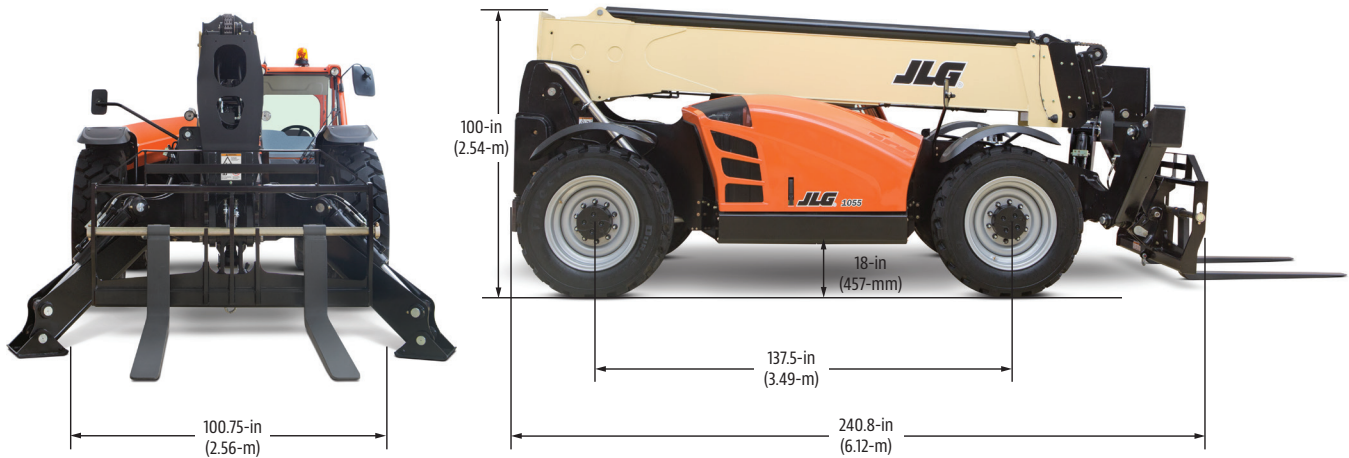
# 1055

TELEHANDLER

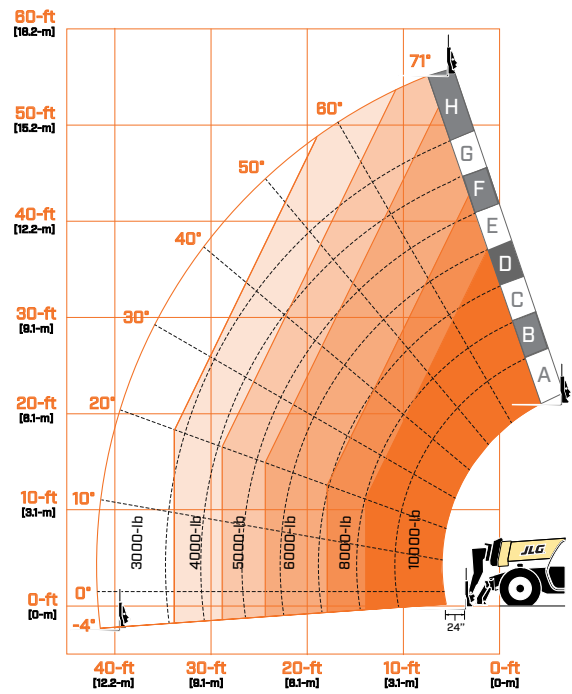
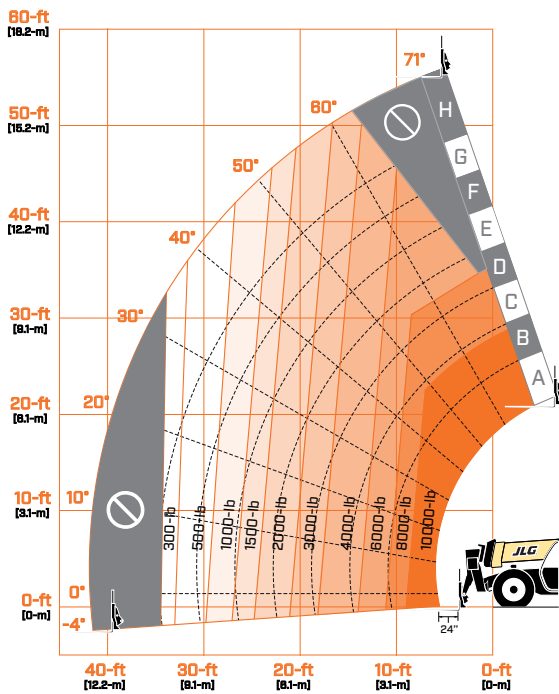


## DIMENSIONS

All dimensions are approximate



## LOAD CHART



We provide coverage for one (1) full year on the entire machine, two (2) full years or 2,000 hours on the drivetrain and cover all specified major structural components for five (5) years. Due to continuous product improvements, we reserve the right to make specification and/or equipment changes without prior notification.



**JLG INDUSTRIES, INC.**  
Toll-free US 877-JLG-LIFT  
**JLG.com**

An Oshkosh Corporation Company

# 10054

TELEHANDLER

# SKYTRAK®



## Performance

Rated Capacity	10,000 lb	4,536 kg
Maximum Lift Height	53 ft 2 in.	16.2 m
Load at Max Height	4,000 lb	1,814 kg
Maximum Forward Reach	38 ft 9 in.	11.8 m
Load at Max Reach	3,000 lb	1,361 kg
Frame Leveling	10°	
Lift Speed (boom retracted)		
Up	16.4 sec	
Down	14.7 sec	
Boom Speed		
Extended	17.6 sec	
Retracted	15.9 sec	
Top Travel Speed (4-Speed)	20 mph	32 kph
Drawbar Pull (loaded)	24,500 lb	109 kN
Outside Turning Radius	165 in.	4.19 m
Operating Weight	28,200 lb	12,791 kg

## Standard Specifications

### Engine

Make and Model	Cummins QSF3.8L Tier 4 F	
No. of Cylinders	4	
Displacement	229 cu in.	3.8 L
Gross Power Basic	110 hp	82 kW
Maximum Torque @ 1500 rpm	348 lb-ft	472 Nm
Fuel Tank Capacity	35 gal	132.5 L

### Transmission

Powershift.  
4-speed forward and 3-speed reverse.

### Axles

Full-time planetary 4-wheel drive.  
Oscillating rear axle with Stabil-Trak system.

### Brakes

Hydraulically actuated inboard wet disc brakes.  
Emergency brake with transmission declutch feature.

### Tires

Standard	400/75-28
Optional	Foam-Filled or Solid

### Cab

Certified ROPS/FOPS structure.  
Adjustable suspension seat with retractable seat belt.  
Single joystick controls.  
Integrated arm rest.  
Rear view mirrors.

### Steering 4-Wheel

Power steering.  
Operator selectable 4-wheel circle, 4-wheel crab, 2-wheel front.

### Instruments

- Hourmeter
- Voltmeter
- Temperature Gauge
- Engine Oil Pressure Gauge
- DEF Gauge
- Fuel Gauge

## Hydraulic System-Implement

Capacity	52 gal	196.8 L
----------	--------	---------

Piston pump.

Variable flow, load sensitive hydraulic system.

Load holding valves on frame level, stabilizer, attachment tilt, extend and lift cylinders.

Auxiliary hydraulics used for all attachments equipped with cylinders or other hydraulic components. Consists of valves, controls and hydraulic lines.

## Accessories & Options

- Enclosed Cab
- Work Lights
- Road Lights
- Air Conditioning
- Rotating Beacon
- Fenders
- Reverse Sensing System

## Attachments

Standard Carriage	50 in. 60 in. 72 in.	1.3 m 1.5 m 1.8 m
Side-Tilt Carriage	50 in. 60 in. 72 in.	1.3 m 1.5 m 1.8 m
Swing 90° Carriage	72 in.	1.8 m
Side Shift Carriage	50 in.	1.3 m
Dual Fork Positioning Carriage	50 in.	1.3 m
Tower Pallet Forks	8 ft (2.4 m); 50 in. (1.3 m)	Standard Carriage
	2.36 in. x 4 in. x 48 in.	60 mm x 102 mm x 1.2 m
	2.36 in. x 5 in. x 48 in.	60 mm x 127 mm x 1.2 m
	2.00 in. x 6 in. x 72 in.	51 mm x 152 mm x 1.8 m
Lumber Forks	2.00 in. x 7 in. x 60 in. 2.36 in. x 6 in. x 60 in.	51 mm x 178 mm x 1.5 m 60 mm x 152 mm x 1.5 m
Cubing Forks	2 in. x 2 in. x 48 in.	51 mm x 51 mm x 1.2 m
Fork Extensions	90 in.	2.3 m
Material Bucket	72 in., 1.0 cu yd 96 in., 1.5 cu yd 102 in., 2.0 cu yd	1.8 m, 0.76 m³ 2.4 m, 1.15 m³ 2.6 m, 1.53 m³
Grapple Bucket	96 in., 1.75 cu yd	2.4 m, 1.34 m³
Truss Boom	12 ft, 2,000 lb 15 ft, 2,000 lb 12 ft with winch, 2,000 lb	3.7 m, 907 kg 4.6 m, 907 kg 3.7 m, 907 kg
Fork Mounted Work Platform	8 ft, 1,000 lb Capacity	2.4 m, 455 kg Capacity
Lifting Hook, Fork Mounted		
Material Handling Arm	4,000 lb Capacity	1,814 kg Capacity
Trash Hopper	72 in, 1.9 cu yd 2,000 lb Capacity	1.8 m, 1.5 m³ 907 kg Capacity
Pipe Grapple	72 in, 2,000 Capacity	1.8 m, 907 kg Capacity

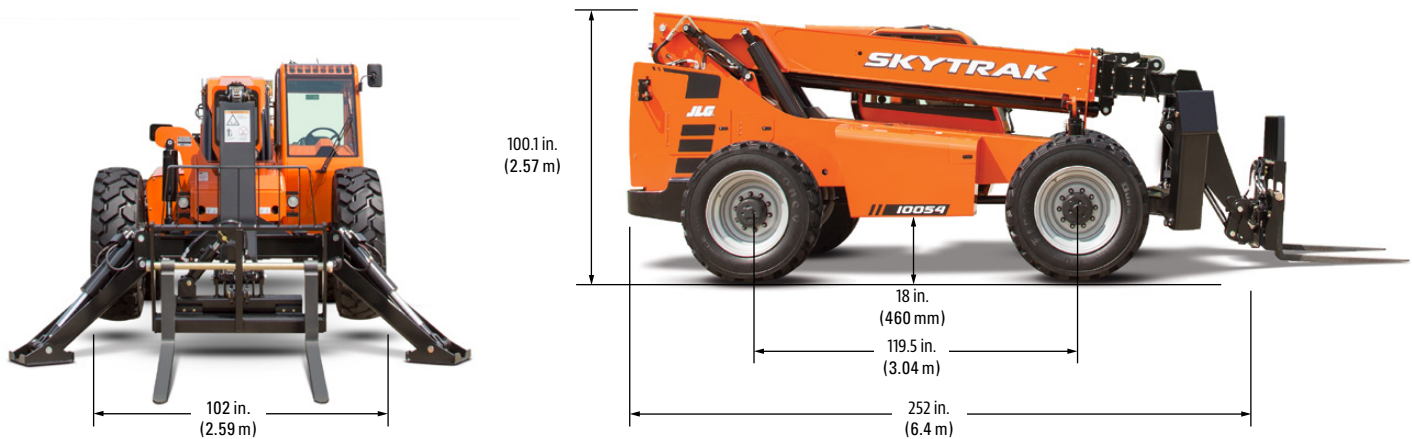
# 10054

## TELEHANDLER

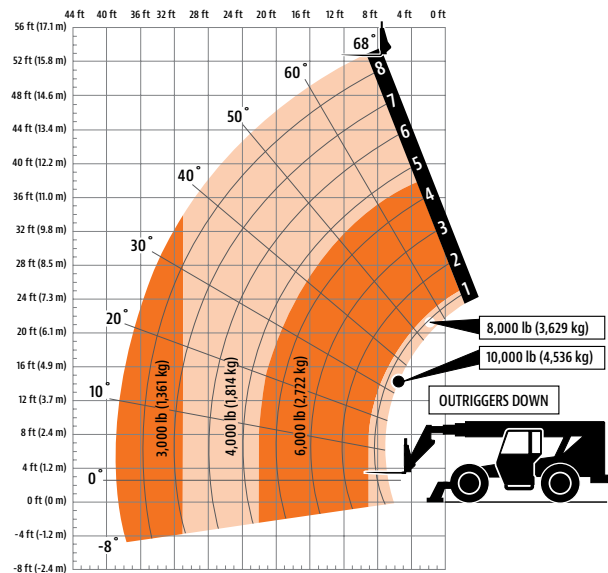
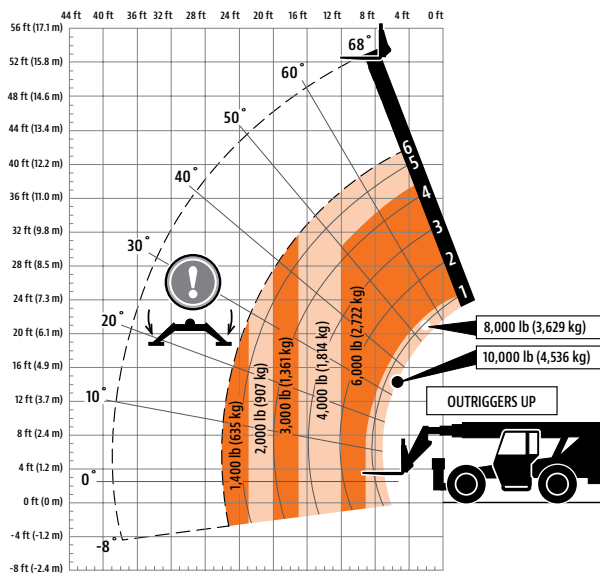
# SKYTRAK®

### Dimensions

All dimensions are approximate.



### Load Chart



### The JLG "1, 2 & 5" Warranty

We provide coverage for one (1) full year on the entire machine, two (2) full years or 2,000 hours on the drivetrain and cover all specified major structural components for five (5) years. Due to continuous product improvements, we reserve the right to make specification and/or equipment changes without prior notification.

Part No.: 3132404  
R011808  
Printed in USA



**JLG Industries, Inc.**  
1 JLG Drive  
McConnellsburg, PA 17233-9533  
Telephone 717-485-5161  
Toll-free in US 877-JLG-LIFT  
Fax 717-485-6417  
[www.jlg.com](http://www.jlg.com)

**An Oshkosh Corporation Company**

# SJ1044/56 TH

## TELEHANDLERS



### KEY FEATURES

- 10,000 lbs (4,535 kg) Maximum lift capacity
- DPF & DEF Free Tier 4 Final 74hp / 221 lb-ft Deutz TCD 3.6L engine
- 20,000 lbs Drawbar pull
- 3-Speed Dana powershift transmission & Dana axles
- Yoke-mounted lifting hook
- 48" Quick attach, floating pin carriage
- Pallet forks, 2.36"x4"x48", 10,000 lbs capacity

### TIRE OPTIONS

- Airless solid rubber 13 x 24
- Non-marking airless solid rubber 13 x 24

### OPTIONAL POWERPLANT

- Tier 4 Final 107hp / 320 lb-ft Deutz TCD 3.6L (includes DEF/SCR system)

### QUICK ATTACH CARRIAGES/ATTACHMENTS

- 48", 60" or 72" Floating pin carriage, 10,000 lbs capacity
- 48", 60" or 72" Floating pin, side tilt carriage, 10,000 lbs capacity
- 72" Floating pin, swing carriage, 9,000 lbs capacity
- 53" Fork positioner, 10,000 lbs capacity
- 2' High capacity jib boom, 10,000 lbs capacity
- 12' Truss boom, 2,000 lbs capacity
- 1.75 Cubic yard bucket, 4,000 lbs capacity

### STANDARD FEATURES

- Axle mount outriggers (SJ1056 TH only)
- Auxiliary hydraulics
- Engine block heater
- Quick attach carriage mount
- Rear window with wiper
- Side window
- Suspension seat
- Single multifunction pilot operated joystick control
- In-cab engine multifunction display
- Hydraulic test ports
- Lockable in-cab storage box
- Rear towing hitch pin
- Steel engine cowl
- Steel component and access covers
- Telematics ready
- ELEVATE Live
- 2-Year Gold Leaf Warranty (5-year structural warranty)

### FORK OPTIONS

- Pallet forks, 2.36"x4"x48", 60" or 72", 10,000 lbs capacity
- Pallet forks, 2.25"x5"x48", 60" or 72", 12,000 lbs capacity
- Fully tapered forks, 1.75"x7"x48", 12,000 lbs capacity
- Block forks, (set of 6) 2"x1.5"x46", 9,000 lbs capacity

† Standard lead times may be increased when optional equipment is added, consult factory.  
‡ Foam-filled tires, standard carriage only. Optional equipment will increase weight.

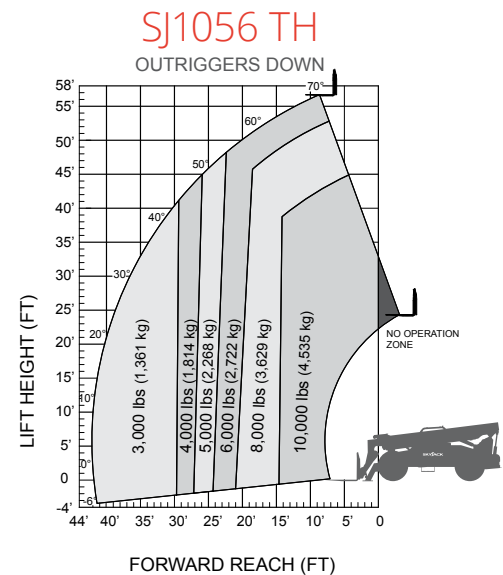
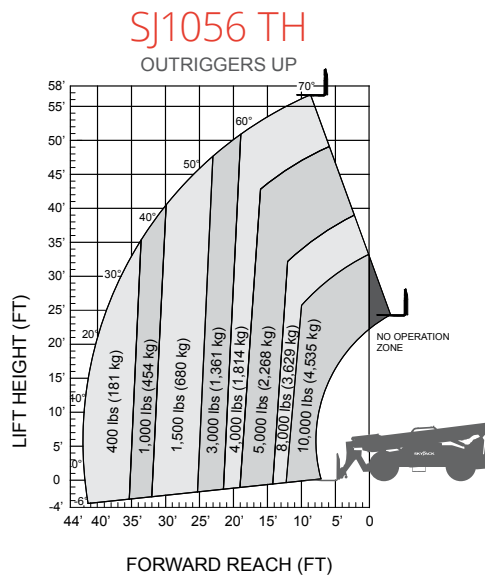
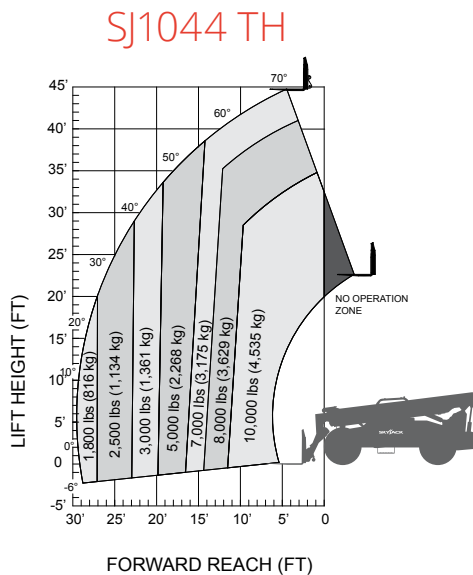


# SJ1044/1056 TH TELEHANDLERS

SPECIFICATIONS	SJ1044 TH	SJ1056 TH
Maximum Lift Capacity	10,000 lbs (4,535 kg)	
Maximum Lift Height	44' 3" (13.49 m)	56' 3" (17.14 m)
Rated Lift Capacity @ Maximum Height	7,000 lbs (3,175 kg)	4,000 lbs (1,814 kg)
Rated Lift Capacity @ Max Height w. O/R	—	6,000 lbs (2,722 kg)
Maximum Forward Reach	29' 4" (8.94 m)	42' 2" (12.85 m)
Rated Lift Capacity @ Maximum Reach	1,800 lbs (816 kg)	400 lbs (181 kg)
Rated Lift Capacity @ Max Reach w. O/R	—	3,000 lbs (1,361 kg)
O/A Length - Less Forks	21' 2" (6.45 m)	22' 2" (6.75 m)
Overall Height - Stowed	8' 1" (2.47 m)	
Overall Width	8' 5" (2.56 m)	
Ground Clearance	19" (48.3 cm)	
Turning Radius - Outside	147" (3.73 m)	153" (3.89 m)
Operating Weight	28,226 lbs (12,803 kg)	33,336 lbs (15,121 kg)
Engine	74hp / 287 lb-ft Deutz TCD 3.6L T4F	
Max Travel Speed - Forward	15 mph (24 km/h)	
Drawbar Pull	20,000 lbs	
Transmission	Dana Powershift, 3 speeds F/R	
Axles	Dana	
Steering	3 mode (Front Wheel, 4 Wheel, Crab)	
Tires	Foam-Filled 14 x 24 16PR Grip Lug	
Fuel Tank Capacity	35 gal. (132 L)	
Hydraulic Reservoir	43.85 gal. (166 L)	

## OPTIONS

- Closed cab (adds front and top window, sliding side window, wipers, full door, heater/defroster, operator fan)
- Air conditioning (closed cab only)
- Premium joystick
- Back up sensor
- Backup sensor and camera
- Service convenience package (remote axle grease points & clean drain engine oil pan valve)
- Cold weather package (cold start engine oil, 50/50 antifreeze mix, battery blanket & hyd. tank heater)
- Arctic weather package (cold start engine oil, 50/50 antifreeze mix, battery blanket, hyd. tank heater & arctic hydraulic oil)
- Four wheel fenders
- Road light package (2 front headlights, front & rear turn signals, tail lights, brake lights)
- Work light package (2 front facing & 2 rear facing halogen work lights)
- Boom light package (2 boom mounted LED work lights)
- Rotating beacon
- Positive air shut-off valve
- Pintle hitch (in lieu of standard hitch pin)
- Non-destructive testing
- ELEVATE telematics
- Warranty options (3-year and 5-year options available)



Skyjack Head Office  
 55 Campbell Rd. Guelph, ON Canada N1H 1B9  
 Sales Inquiries: 1-877-755-4387 (1-877-SJLIFTS)  
 Main Switchboard: 1-800-265-2738  
 Phone: 519-837-0888  
 Fax: 519-837-8104  
 Email: [skyjack@skyjack.com](mailto:skyjack@skyjack.com)

[www.skyjack.com](http://www.skyjack.com)

**IMPORTANT** - Machine design complies with ANSI/ITSDF B56.6-2016 stability requirements for rough terrain forklifts. Rated capacities shown are with machine on firm level ground, steered straight with frame level and on properly inflated tires. Read boom angle and boom extension, then determine allowable load from chart. Do not exceed rated loads as dangerous and unstable machine conditions will result. Always travel with boom retracted in the lowest possible position.

**SKYJACK**  
 simply reliable

This brochure is for illustrative purpose only and based on the latest information at the time of printing. Skyjack Inc. reserves the right to make changes at any time, without notice, to specifications, standard and optional equipment. Consult the Operating Maintenance and Parts Manuals for proper procedures. Work platforms have been tested to comply with ANSI and CSA standards as interpreted by Skyjack Inc.