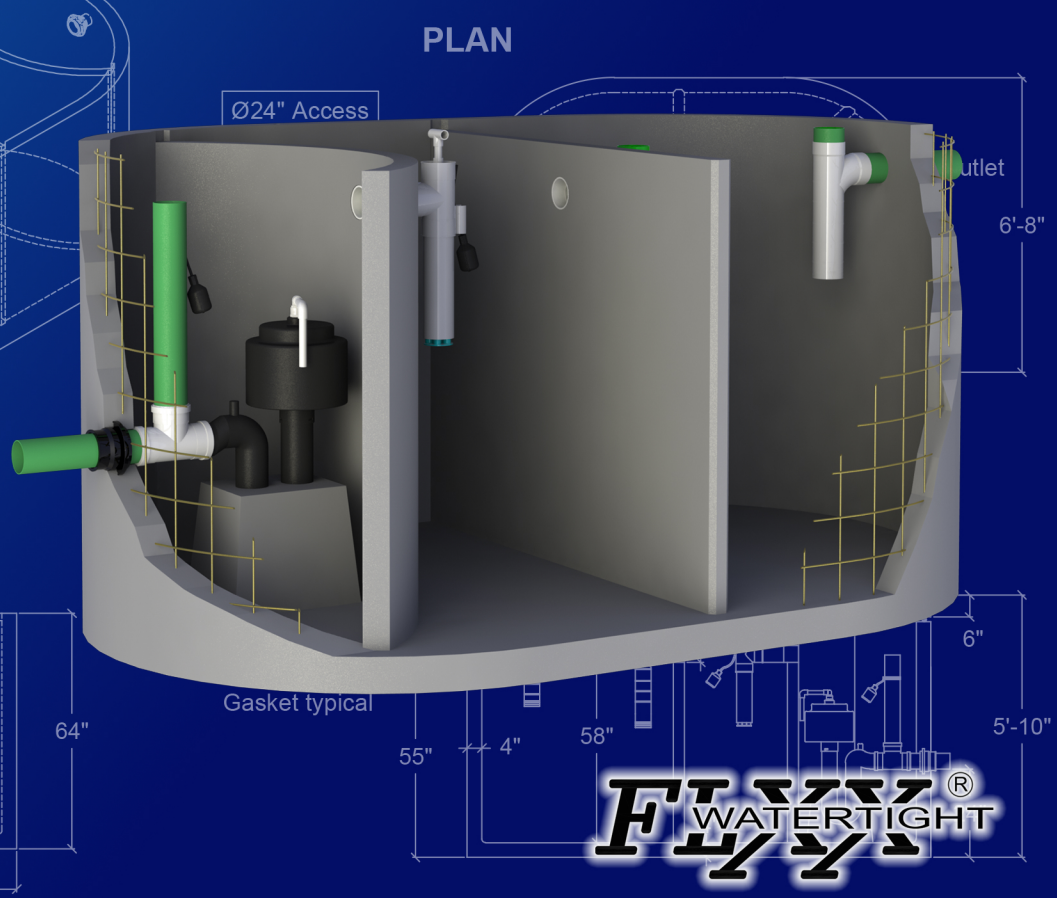
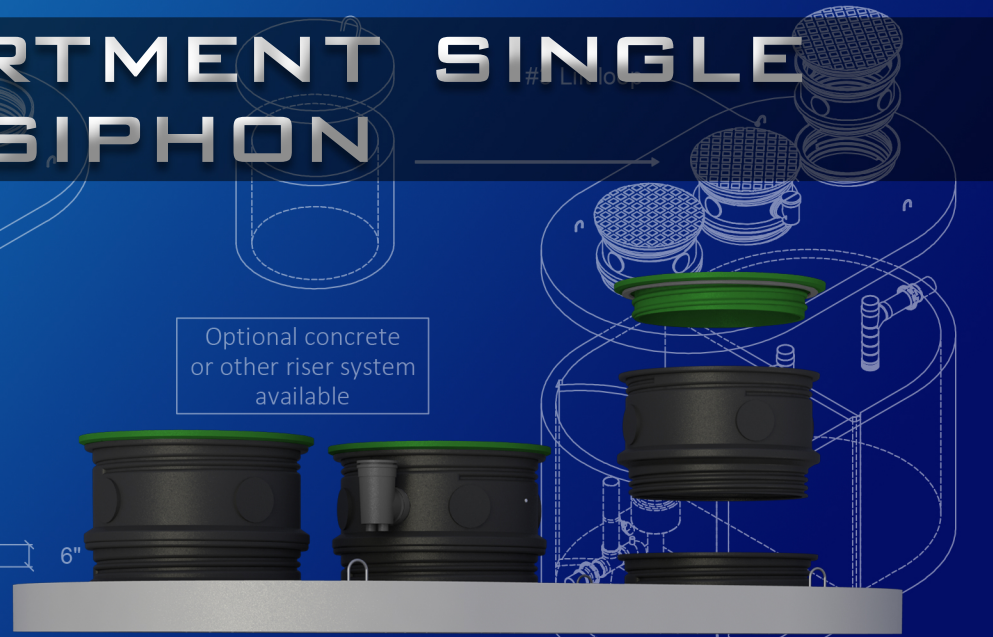
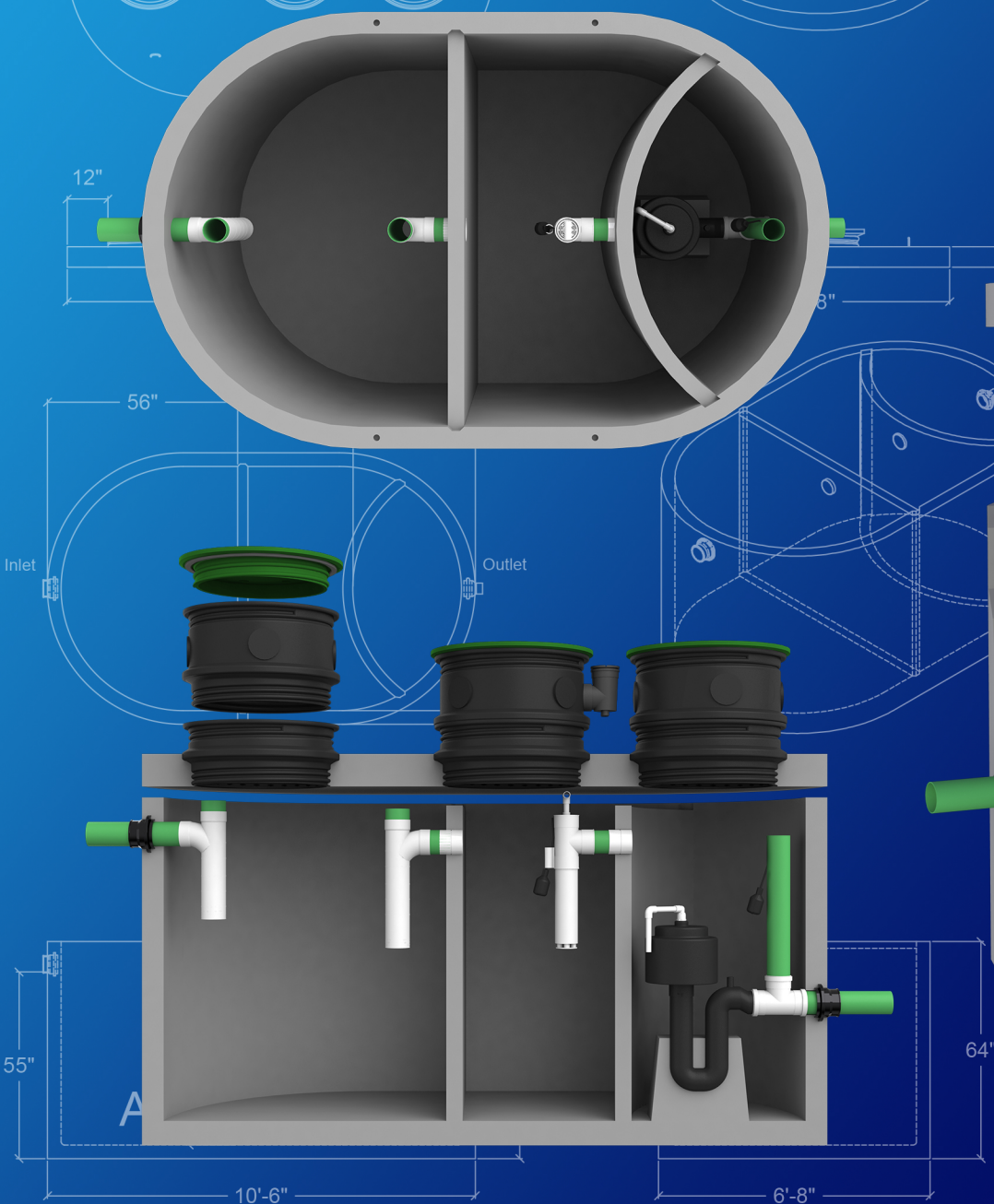


THREE COMPARTMENT SINGLE AUTO SIPHON



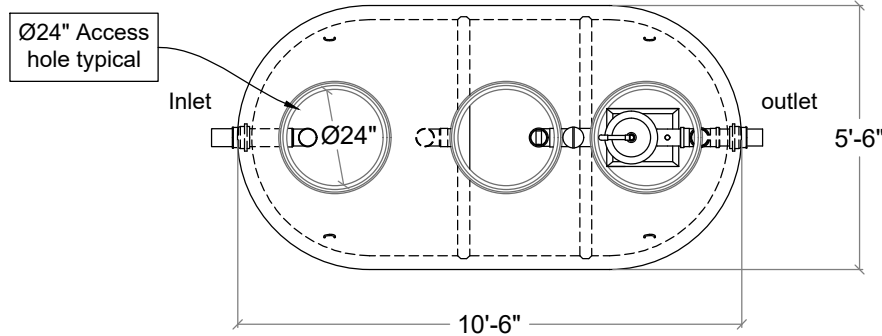
FLIZZ®
WATERTIGHT

1250 Gal. Three Compartment Single Auto Siphon Tank

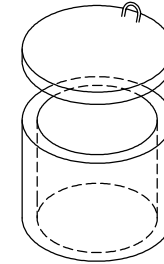
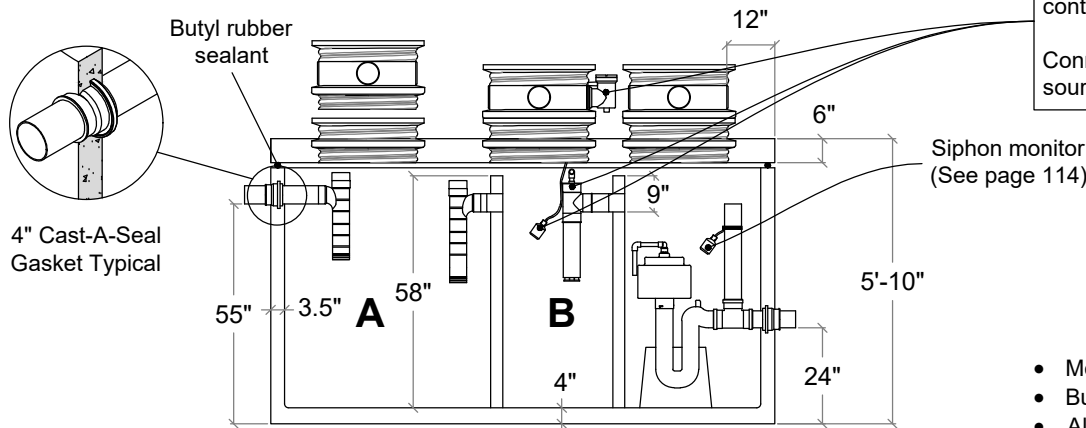
FLXX®

FLXX®

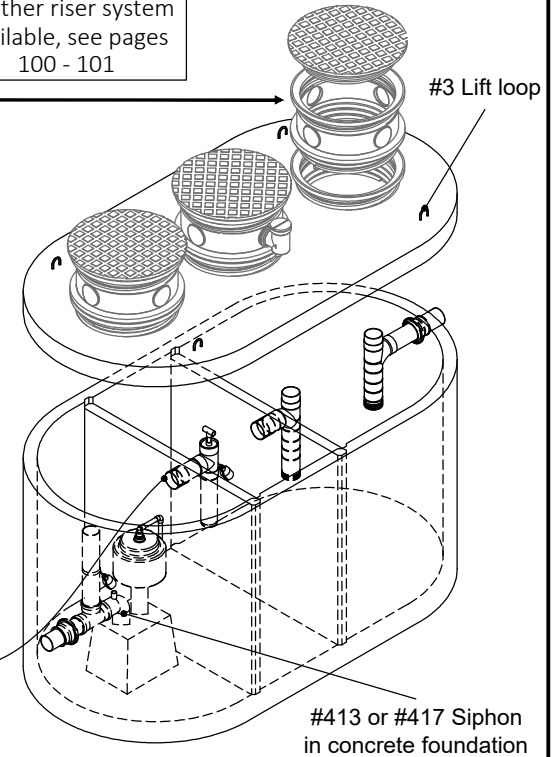
PLAN



SECTION



Optional concrete or other riser system available, see pages 100 - 101



- Monolithic tank meets ASTM C-1227 Spec. for water and wastewater structures.
- Butyl rubber sealant meets Fed. Spec. SS-S-210A. (Provided with tank)
- All plumbing shown in diagram is 4" SDR 35. (Provided with tank)
- Follow standard practice for installation of underground precast concrete structures. (See page 2 for ASTM C-891 Summary)

Note: N.T.S.

Part #	Capacities (gallons)		Siphon Chamber	Siphon Model Number	Discharge per Cycle	Average Discharge rate	Approximate Weights			
	A	B					Tank*	Lid	Baffle W.	Total
PCA-000-262	640	420	330 Gal.	# 413	85 Gal.	140 GPM	8,630 lbs	3,370 lbs	1,820 lbs	13,820 lbs
PCA-001-262				# 417	110 Gal.	150 GPM				

Total Capacity: 1390 gallons

* Includes 200 lbs. Siphon / foundation

FLXX®
WATERTIGHT

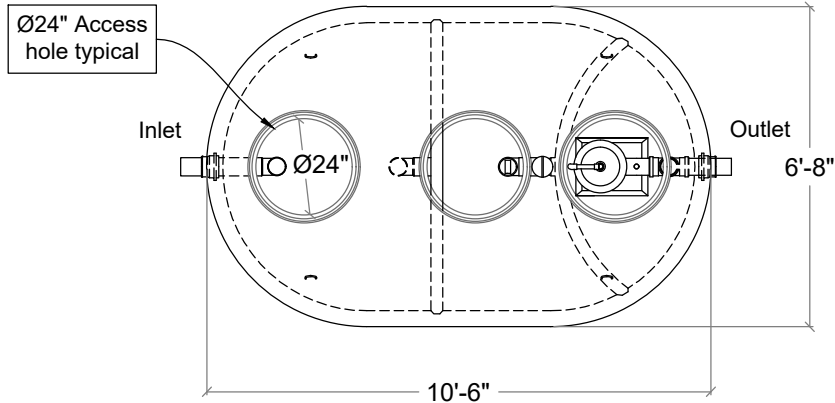
Front Range Precast Concrete, Inc.
5901 Dexter Street, Unit 102, Commerce City, CO 80022
Phone (303) 442-3207 - (800) 783-3207 - Fax (303) 442-3209
www.flxx.com

1500 Gal. Three Compartment Single Auto Siphon Tank 3.0

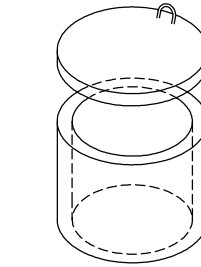
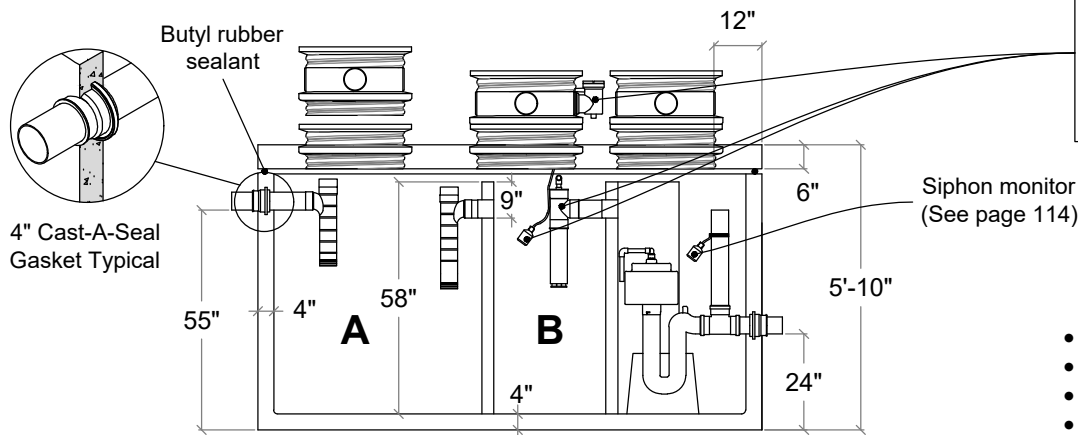
FLXX®

FLXX®

PLAN



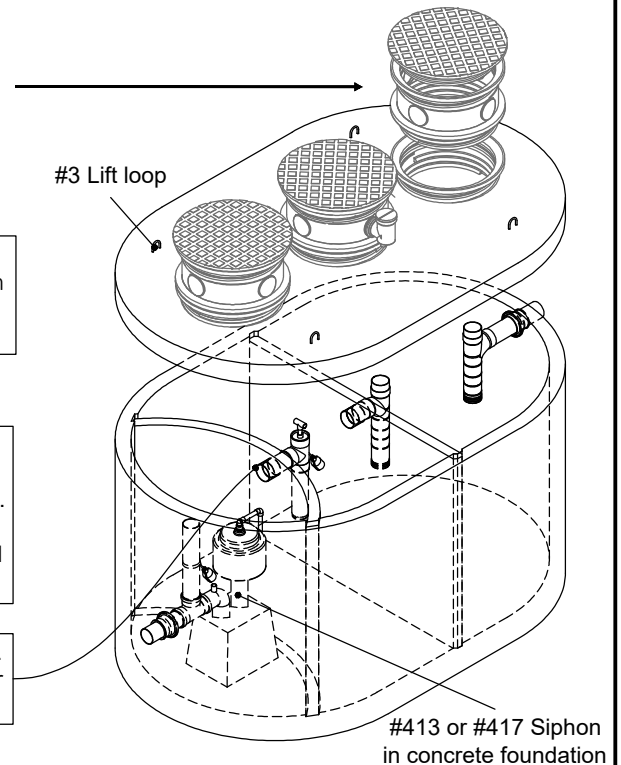
SECTION



Optional concrete or other riser system available, see pages 100 - 101

Optional filter monitor, liquid level alarm, float control switch and J-box.
Connections to electrical source by others.

Sealed baffle wall. Install effluent filter at this location.



- Monolithic tank meets ASTM C-1227 Spec. for water and wastewater structures.
- Butyl rubber sealant meets Fed. Spec. SS-S-210A. (Provided with tank)
- All plumbing shown in diagram is 4" SDR 35. (Provided with tank)
- Follow standard practice for installation of underground precast concrete structures. (See page 2 for ASTM C-891 Summary)

Note: N.T.S.

Part #	Capacities (gallons)		Siphon Chamber	Siphon Model Number	Discharge per Cycle	Average Discharge rate	Approximate Weights			
	A	B					Tank*	Lid	Baffle W.	Total
PCA-100-263	785	500	250 Gal.	# 413	65 Gal.	140 GPM	9,815 lbs	3,900 lbs	2,220 lbs	15,935 lbs
PCA-101-263				# 417	85 Gal.	150 GPM				

Total Capacity: 1535 gallons

* Includes 200 lbs. Siphon / foundation

FLXX®
WATERTIGHT

Front Range Precast Concrete, Inc.

5901 Dexter Street, Unit 102, Commerce City, CO 80022

Phone (303) 442-3207 - (800) 783-3207 - Fax (303) 442-3209

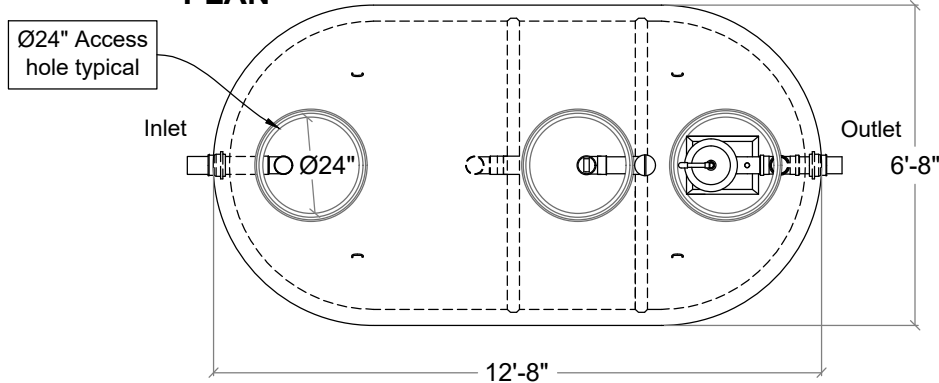
www.flxx.com

2000 Gal. Three Compartment Single Auto Siphon Tank

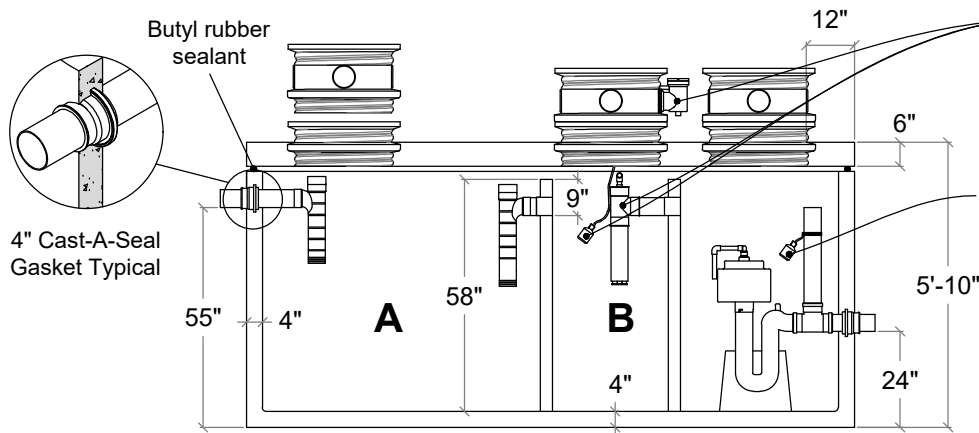
FLXX

FLXX

PLAN



SECTION

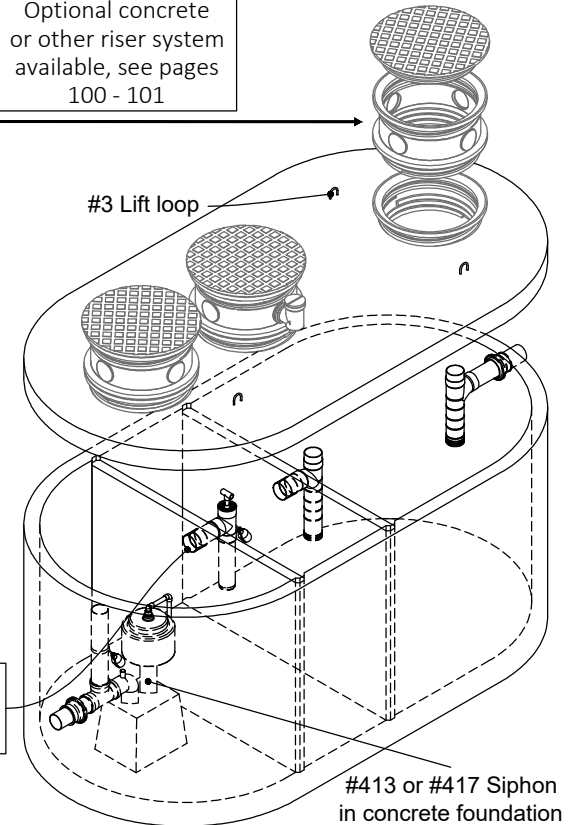


Optional filter monitor, liquid level alarm, float control switch and J-box. Connections to electrical source by others.

Siphon monitor (See page 114)

Sealed baffle wall. Install effluent filter at this location.

Optional concrete or other riser system available, see pages 100 - 101



- Monolithic tank meets ASTM C-1227 Spec. for water and wastewater structures.
- Butyl rubber sealant meets Fed. Spec. SS-S-210A. (Provided with tank)
- All plumbing shown in diagram is 4" SDR 35. (Provided with tank)
- Follow standard practice for installation of underground precast concrete structures. (See page 2 for ASTM C-891 Summary)

Note: N.T.S.

Part #	Capacities (gallons)		Siphon Chamber	Siphon Model Number	Discharge per Cycle	Average Discharge rate	Approximate Weights			
	A	B					Tank*	Lid	Baffle W.	Total
PCA-000-265	1,000	500	500 Gal.	# 413	130 Gal.	140 GPM	11,890 lbs	5,145 lbs	2,220 lbs	19,255 lbs
PCA-001-265				# 417	170 Gal.	150 GPM				

Total Capacity: 2000 gallons

* Includes 200 lbs. Siphon / foundation

FLXX®
WATERTIGHT

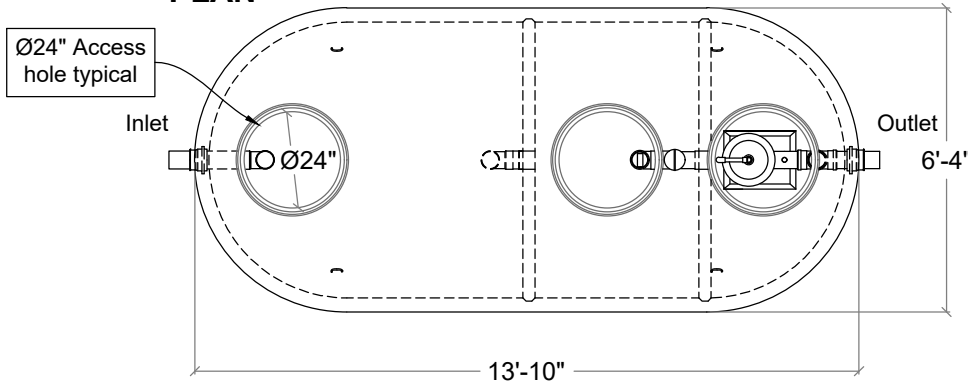
Front Range Precast Concrete, Inc.
5901 Dexter Street, Unit 102, Commerce City, CO 80022
Phone (303) 442-3207 - (800) 783-3207 - Fax (303) 442-3209
www.flxx.com

2500 Gal. Three Compartment Single Auto Siphon Tank

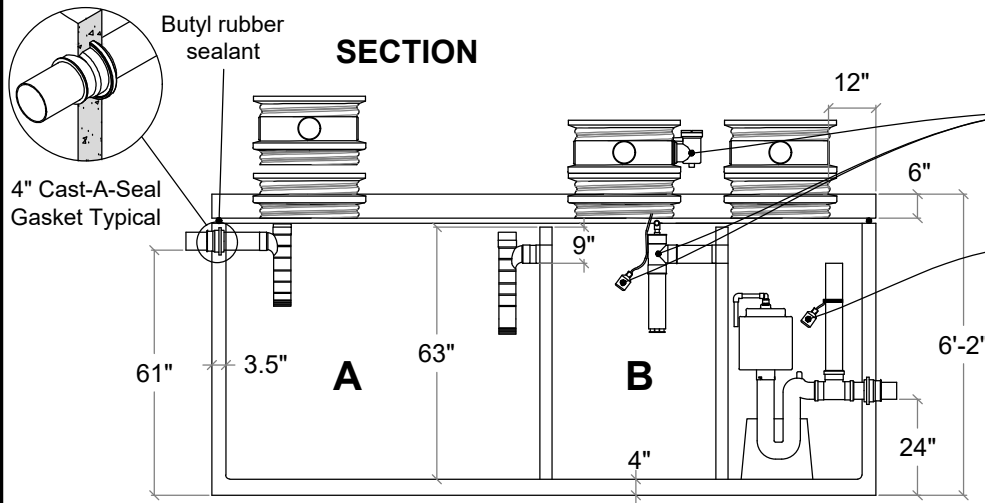
FLXX®

FLXX®

PLAN



SECTION

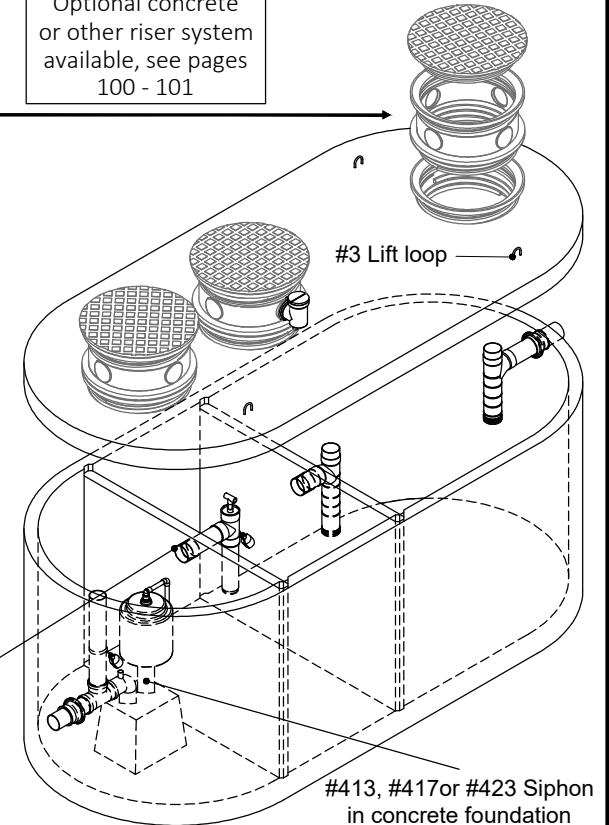


Optional filter monitor, liquid level alarm, float control switch and J-box.
Connections to electrical source by others.

Siphon monitor (See page 114)

Sealed baffle wall. Install effluent filter at this location.

Optional concrete or other riser system available, see pages 100 - 101



- Monolithic tank meets ASTM C-1227 Spec. for water and wastewater structures.
- Butyl rubber sealant meets Fed. Spec. SS-S-210A. (Provided with tank)
- All plumbing shown in diagram is 4" SDR 35. (Provided with tank)
- Follow standard practice for installation of underground precast concrete structures. (See page 2 for ASTM C-891 Summary)

Note: N.T.S.

* Includes 200 lbs. Siphon / foundation

Part #	Capacities (gallons)		Siphon Chamber	Siphon Model Number	Discharge per Cycle	Average Discharge rate	Approximate Weights			
	A	B					Tank*	Lid	Baffle W.	Total
PCA-000-353				# 413	135 Gal.	140 GPM				
PCA-001-353	1,145	780	525 Gal.	# 417	180 Gal.	150 GPM	12,090 lbs	5,160 lbs	2,300 lbs	19,550 lbs
PCA-002-353				# 423	240 Gal.	160 GPM				

FLXX®
WATERTIGHT

Front Range Precast Concrete, Inc.
5901 Dexter Street, Unit 102, Commerce City, CO 80022
Phone (303) 442-3207 - (800) 783-3207 - Fax (303) 442-3209
www.flxx.com