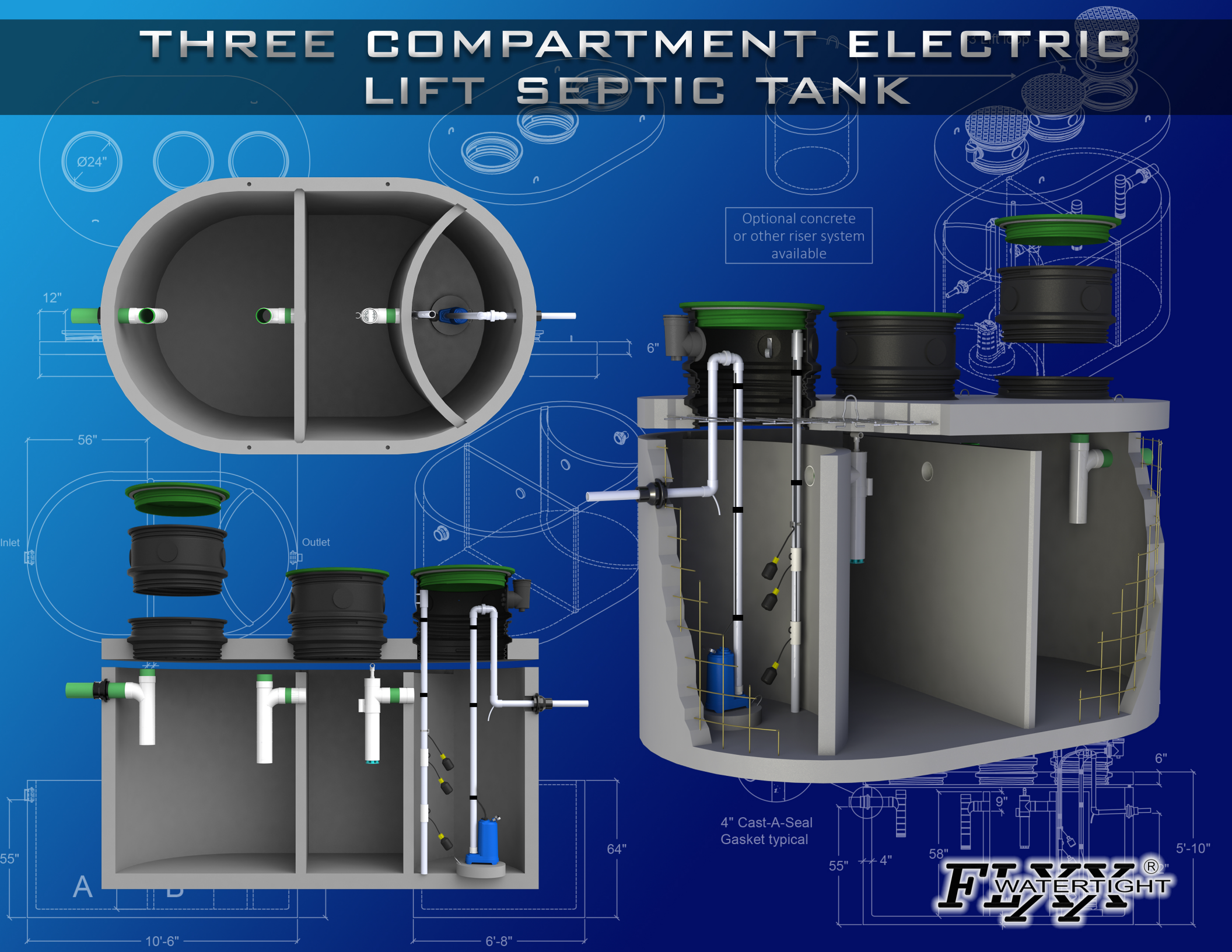
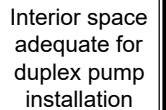


# THREE COMPARTMENT ELECTRIC LIFT SEPTIC TANK



**FLXX®**

- Note: N.T.S.*

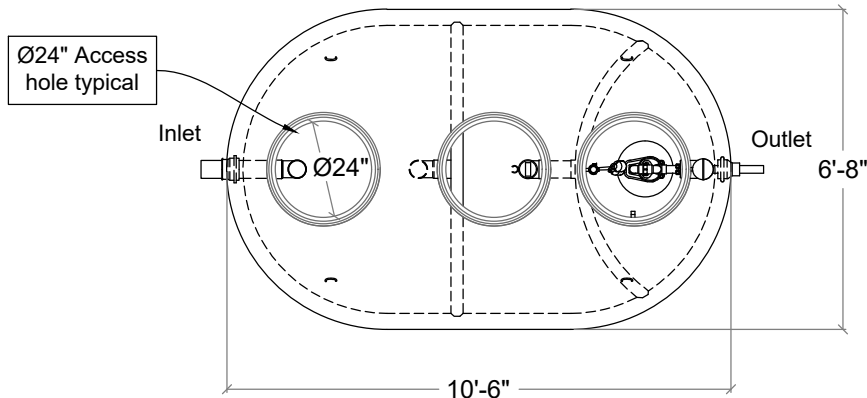
**Front Range Precast Concrete, Inc.**  
5901 Dexter Street, Unit 102, Commerce City, CO 80022  
Phone (303) 442-3207 - (800) 783-3207 - Fax (303) 442-3209  
[www.flxx.com](http://www.flxx.com)

# 1500 Gal. Three Compartment Electric Lift Septic Tank 3.0

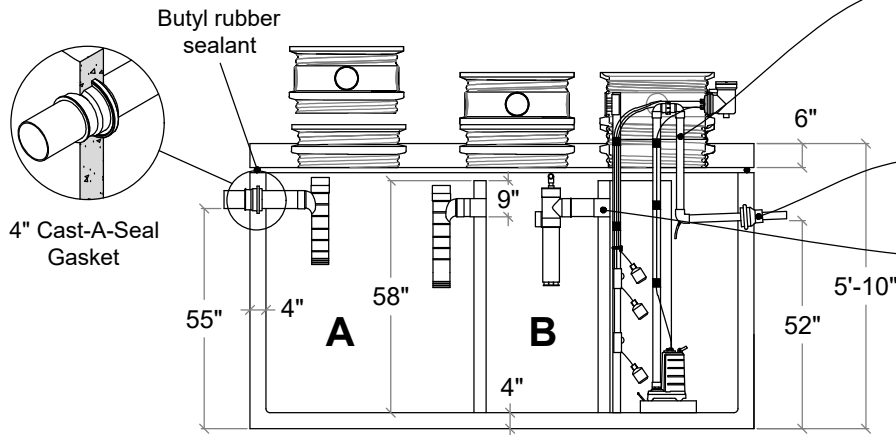
**FLXX**

**FLXX**

**PLAN**



**SECTION**



Effluent pump (per specification) / alarm box, float tree, control switches installed and pump plumbed to stub-out including preassembled pipes and fittings.

Connections to electrical source by others.

1 1/2" - 2" Cast-A-Seal Gasket

Sealed baffle wall. Install effluent filter at this location.

2' X 1' Modified riser with Orenco splice box float tree bracket, optional concrete or other riser system available, see page 102

#3 Lift loop

Interior space adequate for duplex pump installation

Note: N.T.S.

- Monolithic tank meets ASTM C-1227 Spec. for water and wastewater structures.
- Butyl rubber sealant meets Fed. Spec. SS-S-210A. (Provided with tank)
- All plumbing shown in diagram is 4" SDR 35. (Provided with tank)
- Follow standard practice for installation of underground precast concrete structures. (See page 2 for ASTM C-891 Summary)

Part #	Capacities (gallons)		Lift Station Chamber	Discharge per Cycle	Approximate Weights			
	A	B			Tank	Lid	Baffle Walls	Total
PCA-000-268	785	500	250 Gal.	Variable 6.0 Gal. / Vertical inch	9,615 lbs	3,900 lbs	2,220 lbs	15,735 lbs
<b>Total Capacity: 1535 gallons</b>								

**FLXX**®  
WATERTIGHT

**Front Range Precast Concrete, Inc.**

5901 Dexter Street, Unit 102, Commerce City, CO 80022

Phone (303) 442-3207 - (800) 783-3207 - Fax (303) 442-3209

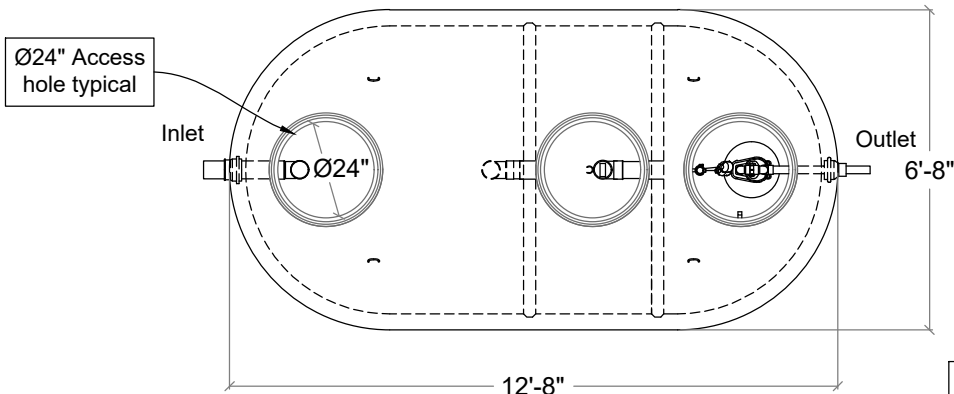
www.flxx.com

# 2000 Gal. Three Compartment Electric Lift Septic Tank

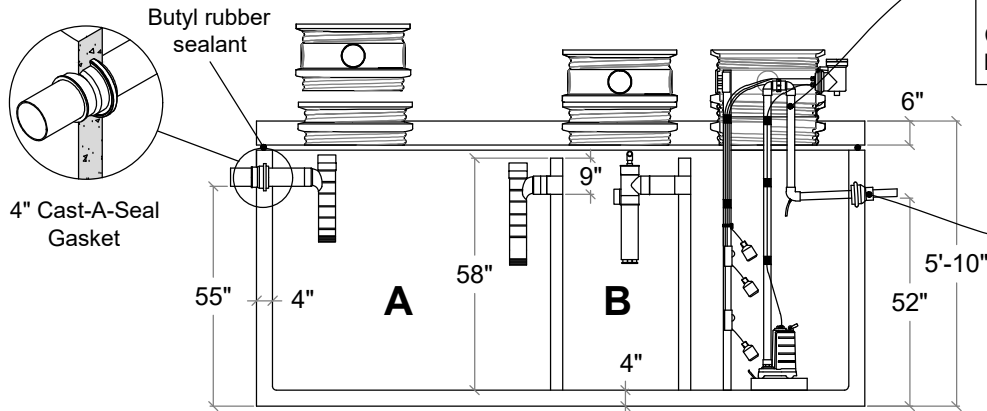
**FLXX**

**FLXX**

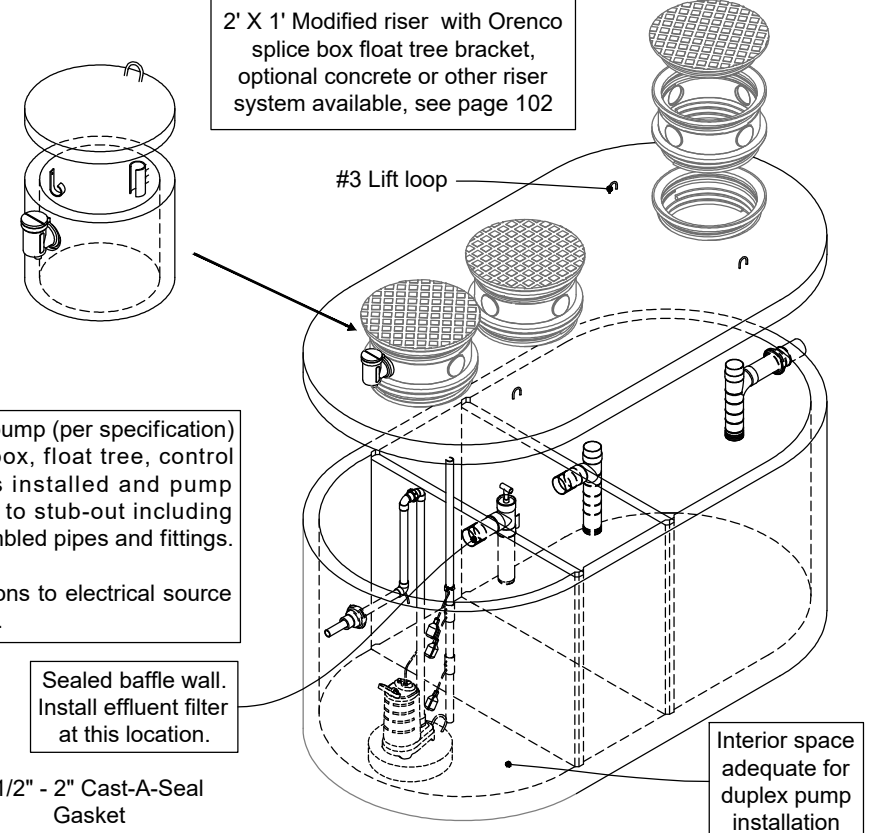
**PLAN**



**SECTION**



Note: N.T.S.



- Monolithic tank meets ASTM C-1227 Spec. for water and wastewater structures.
- Butyl rubber sealant meets Fed. Spec. SS-S-210A. (Provided with tank)
- All plumbing shown in diagram is 4" SDR 35. (Provided with tank)
- Follow standard practice for installation of underground precast concrete structures. (See page 2 for ASTM C-891 Summary)

Part #	Capacities (gallons)		Lift Station Chamber	Discharge per Cycle	Approximate Weights			
	A	B			Tank	Lid	Baffle Walls	Total
PCA-000-269	1000	500	500 Gal.	Variable 10.5 Gal. / Vertical inch	11,690 lbs	5,145 lbs	2,220 lbs	19,055 lbs
<b>Total Capacity: 2000 gallons</b>								

**FLXX**®  
WATERTIGHT

**Front Range Precast Concrete, Inc.**

5901 Dexter Street, Unit 102, Commerce City, CO 80022

Phone (303) 442-3207 - (800) 783-3207 - Fax (303) 442-3209

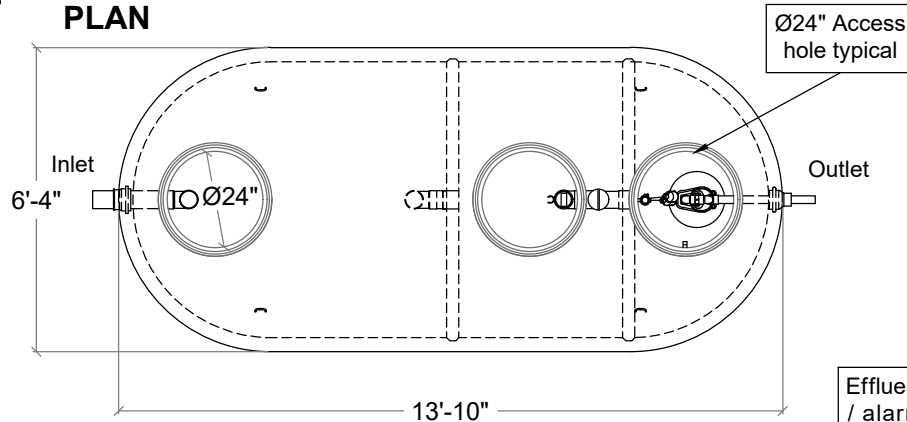
www.flxx.com

# 2500 Gal. Three Compartment Electric Lift Septic Tank

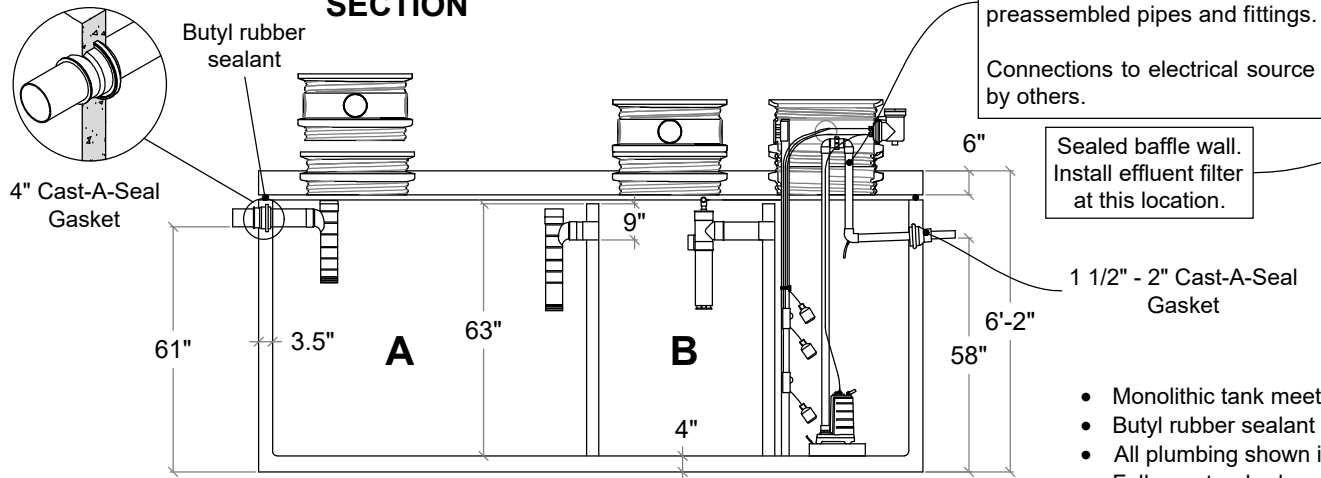
**FLXX®**

**FLXX®**

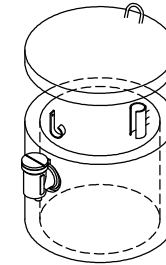
**PLAN**



**SECTION**



2' X 1' Modified riser with Orenco splice box float tree bracket, optional concrete or other riser system available, see page 102

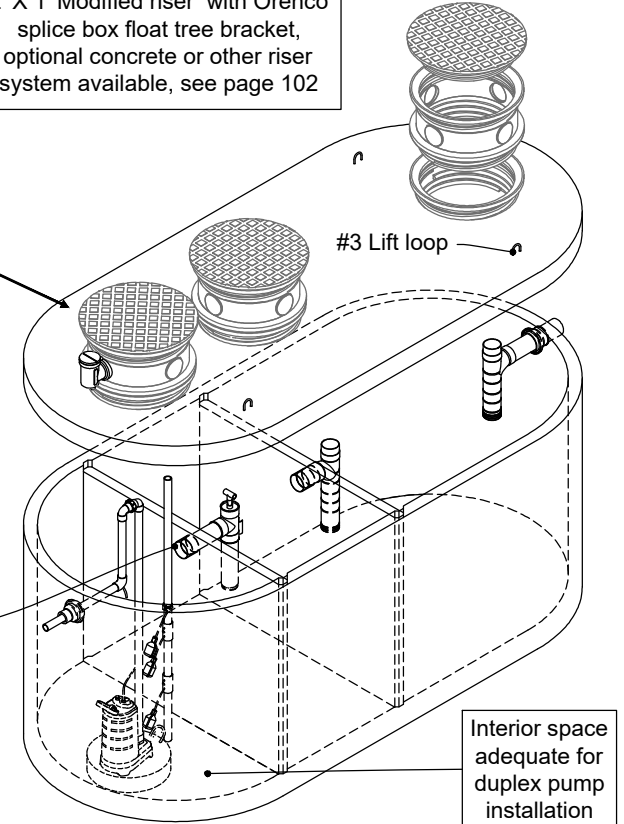


Effluent pump (per specification) / alarm box, float tree, control switches installed and pump plumbed to stub-out including preassembled pipes and fittings.

Connections to electrical source by others.

Sealed baffle wall. Install effluent filter at this location.

1 1/2" - 2" Cast-A-Seal Gasket



- Monolithic tank meets ASTM C-1227 Spec. for water and wastewater structures.
- Butyl rubber sealant meets Fed. Spec. SS-S-210A. (Provided with tank)
- All plumbing shown in diagram is 4" SDR 35. (Provided with tank)
- Follow standard practice for installation of underground precast concrete structures. (See page 2 for ASTM C-891 Summary)

Note: N.T.S.

Part #	Capacities (gallons)		Lift Station Chamber	Discharge per Cycle	Approximate Weights			
	A	B			Tank	Lid	Baffle Walls	Total
PCA-000-355	1,145	780	525 Gal.	Variable 9.2 Gal. / Vertical inch	11,890 lbs	5,160 lbs	2,300 lbs	19,350 lbs
<b>Total Capacity: 2450 gallons</b>								

**FLXX®**  
WATERTIGHT

**Front Range Precast Concrete, Inc.**

5901 Dexter Street, Unit 102, Commerce City, CO 80022

Phone (303) 442-3207 - (800) 783-3207 - Fax (303) 442-3209

www.flxx.com