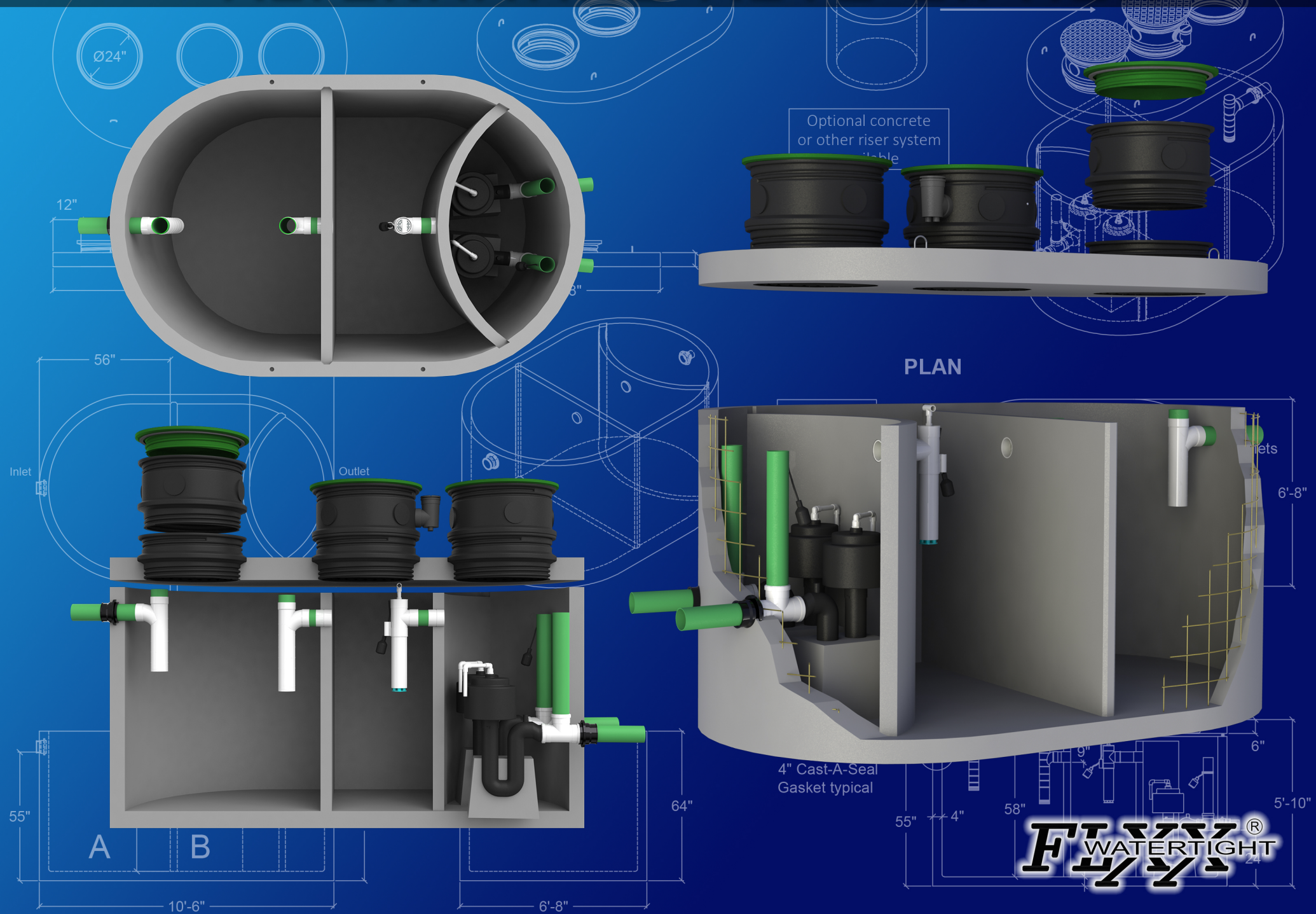


# THREE COMPARTMENT DUAL ALTERNATING AUTO SIPHON

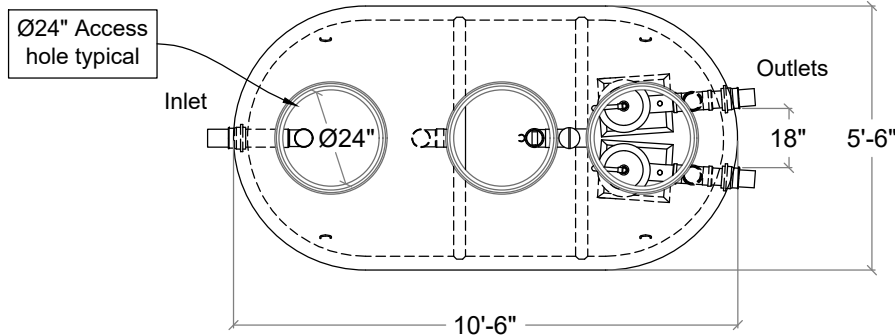


# 1250 Gal. Three Compartment Dual Alternating Auto Siphon Tank

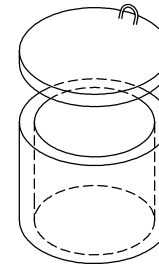
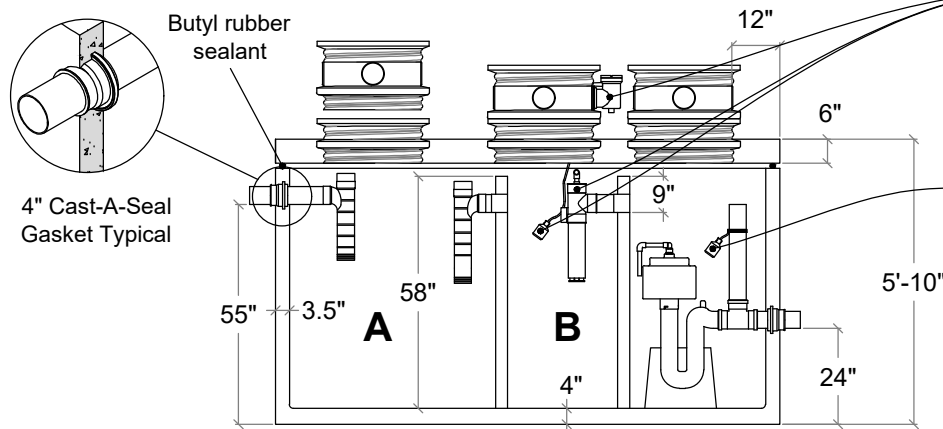
FLXX®

FLXX®

PLAN



SECTION



Optional concrete or other riser system available, see pages 100 - 101

Optional filter monitor, liquid level alarm, float control switch and J-box.

Connections to electrical source by others.

Sealed baffle wall. Install effluent filter at this location.

Siphon monitor (See page 114)

(2) #413 or #417 Siphon in concrete foundation

- Monolithic tank meets ASTM C-1227 Spec. for water and wastewater structures.
- Butyl rubber sealant meets Fed. Spec. SS-S-210A. (Provided with tank)
- All plumbing shown in diagram is 4" SDR 35. (Provided with tank)
- Follow standard practice for installation of underground precast concrete structures. (See page 2 for ASTM C-891 Summary)

Note: N.T.S.

Part #	Capacities (gallons)		Siphon Chamber	Siphon Model Number	Discharge per Cycle	Average Discharge rate	Approximate Weights			
	A	B					Tank*	Lid	Baffle W.	Total
PCA-000-339	640	420	330 Gal.	# 413	85 Gal.	140 GPM	8,830 lbs	3,370 lbs	1,820 lbs	14,020 lbs
PCA-001-339				# 417	110 Gal.	150 GPM				

Total Capacity: 1390 gallons

\* Includes 400 lbs. Siphon / foundation

FLXX®  
WATERTIGHT

Front Range Precast Concrete, Inc.

5901 Dexter Street, Unit 102, Commerce City, CO 80022

Phone (303) 442-3207 - (800) 783-3207 - Fax (303) 442-3209

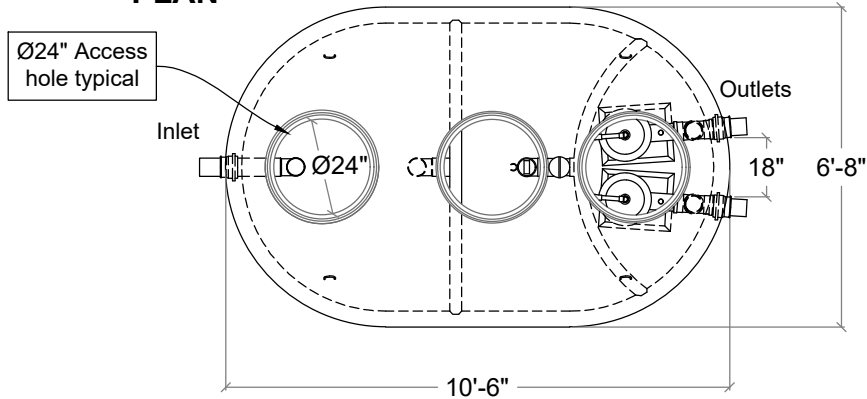
www.flxx.com

# 1500 Gal. Three Compartment Dual Alternating Auto Siphon Tank 3.0

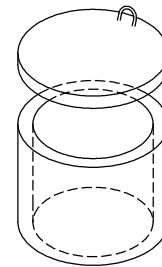
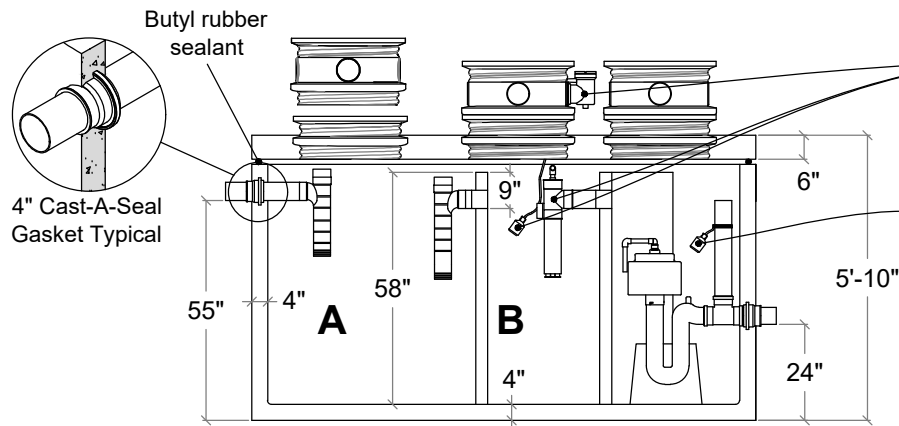
**FLXX**

**FLXX**

**PLAN**



**SECTION**



Optional concrete or other riser system available, see pages 100 - 101

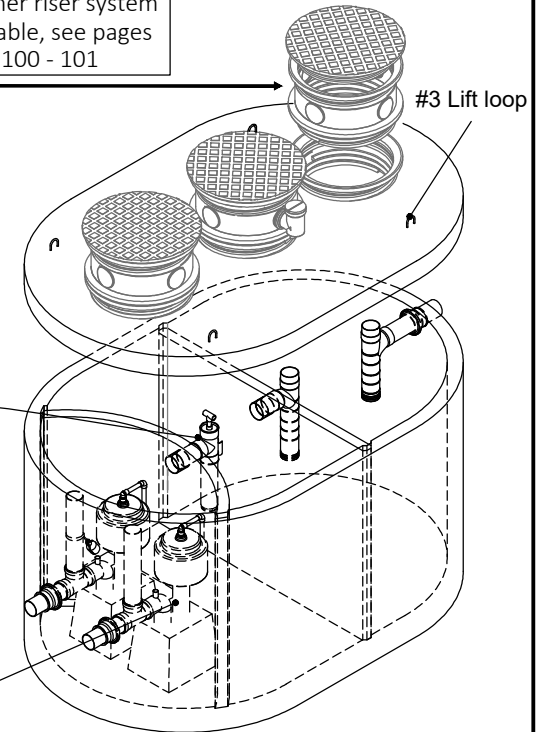
Sealed baffle wall. Install effluent filter at this location.

Optional filter monitor, liquid level alarm, float control switch and J-box.

Connections to electrical source by others.

Siphon monitor (See page 114)

(2) #413 or #417 Siphon in concrete foundation



- Monolithic tank meets ASTM C-1227 Spec. for water and wastewater structures.
- Butyl rubber sealant meets Fed. Spec. SS-S-210A. (Provided with tank)
- All plumbing shown in diagram is 4" SDR 35. (Provided with tank)
- Follow standard practice for installation of underground precast concrete structures. (See page 2 for ASTM C-891 Summary)

Note: N.T.S.

Part #	Capacities (gallons)		Siphon Chamber	Siphon Model Number	Discharge per Cycle	Average Discharge rate	Approximate Weights			
	A	B					Tank*	Lid	Baffle W.	Total
PCA-000-264	785	500	250 Gal.	# 413	115 Gal.	140 GPM	10,015 lbs	3,900 lbs	2,220 lbs	16,135 lbs
PCA-001-264				# 417	150 Gal.	150 GPM				

**Total Capacity: 1535 gallons**

\* Includes 400 lbs. Siphon / foundation

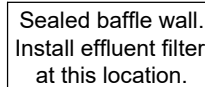
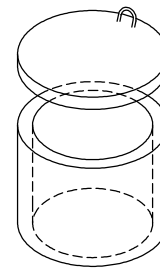
**FLXX**®  
WATERTIGHT

**Front Range Precast Concrete, Inc.**

5901 Dexter Street, Unit 102, Commerce City, CO 80022

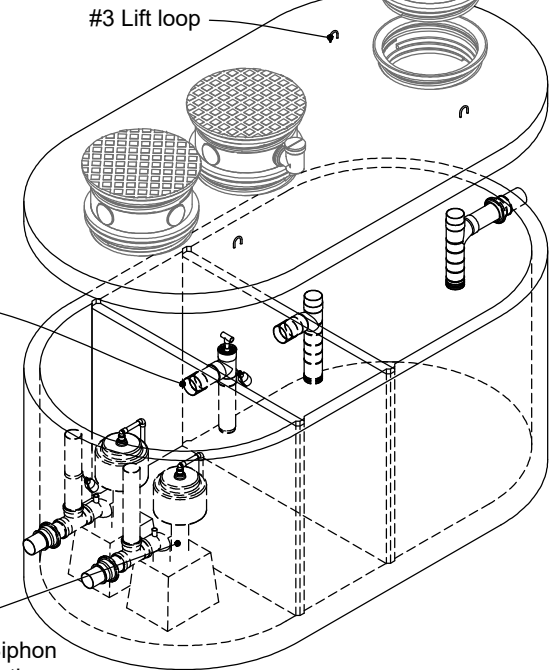
Phone (303) 442-3207 - (800) 783-3207 - Fax (303) 442-3209

www.flxx.com

**FLXX®**

Connections to electrical  
source by others.

(2) #413 or #417 Siphon  
in concrete foundation



- Note: N.T.S.*

Part #	Capacities (gallons)		Siphon Chamber	Siphon Model Number	Discharge per Cycle	Average Discharge rate	Approximate Weights			
	A	B					Tank*	Lid	Baffle W.	Total
PCA-000-340	1,000	500	500 Gal.	# 413	130 Gal.	140 GPM	12,090 lbs	5,145 lbs	2,220 lbs	19,455 lbs
PCA-001-340				# 417	170 Gal.	150 GPM				

**Total Capacity: 2000 gallons**

\* Includes 400 lbs. Siphon / foundation

**F4®** WATERTIGHT

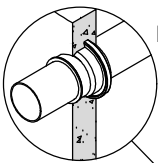
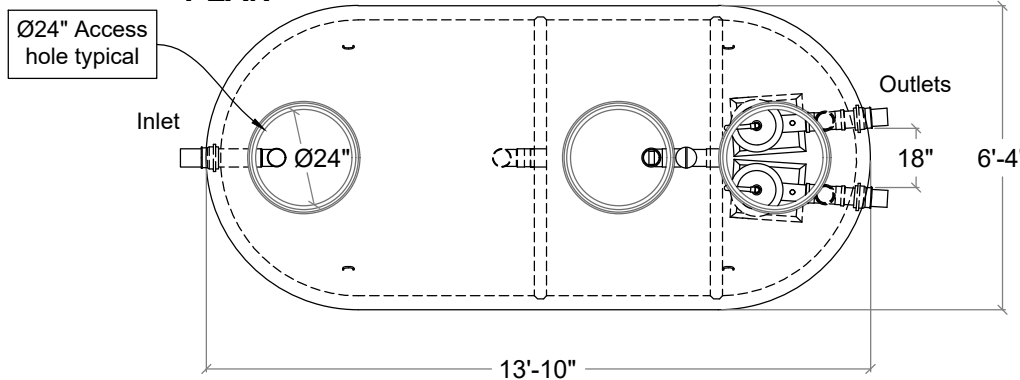
**Front Range Precast Concrete, Inc.**  
5901 Dexter Street, Unit 102, Commerce City, CO 80022  
Phone (303) 442-3207 - (800) 783-3207 - Fax (303) 442-3209  
[www.flxx.com](http://www.flxx.com)

# 2500 Gal. Three Compartment Dual Alternating Auto Siphon Tank

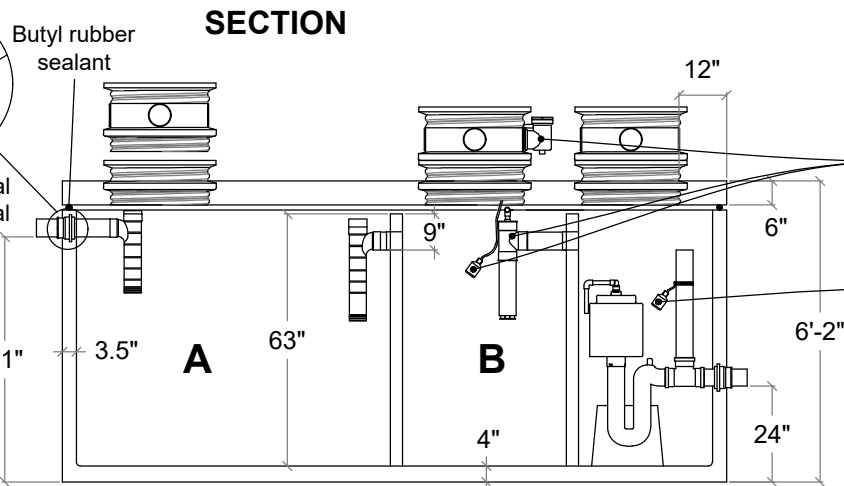
**FLXX**

**FLXX**

**PLAN**



4" Cast-A-Seal Gasket Typical



Sealed baffle wall.  
Install effluent filter  
at this location.

Optional filter monitor,  
liquid level alarm, float  
control switch and J-box.

Connections to electrical  
source by others.

Siphon monitor  
(See page 114)

(2) #413, #417 or #423  
Siphon in concrete foundation

- Monolithic tank meets ASTM C-1227 Spec. for water and wastewater structures.
- Butyl rubber sealant meets Fed. Spec. SS-S-210A. (Provided with tank)
- All plumbing shown in diagram is 4" SDR 35. (Provided with tank)
- Follow standard practice for installation of underground precast concrete structures. (See page 2 for ASTM C-891 Summary)

Note: N.T.S.

\* Includes 400 lbs. Siphon / foundation

Part #	Capacities (gallons)		Siphon Chamber	Siphon Model Number	Discharge per Cycle	Average Discharge rate	Approximate Weights			
	A	B					Tank*	Lid	Baffle W.	Total
PCA-000-354				# 413	135 Gal.	140 GPM				
PCA-001-354	1,145	780	525 Gal.	# 417	180 Gal.	150 GPM	12,290 lbs	5,160 lbs	2,300 lbs	19,750 lbs
PCA-002-354				# 423	240 Gal.	160 GPM				

**FLXX**®  
WATERTIGHT

**Front Range Precast Concrete, Inc.**  
5901 Dexter Street, Unit 102, Commerce City, CO 80022  
Phone (303) 442-3207 - (800) 783-3207 - Fax (303) 442-3209  
www.flxx.com