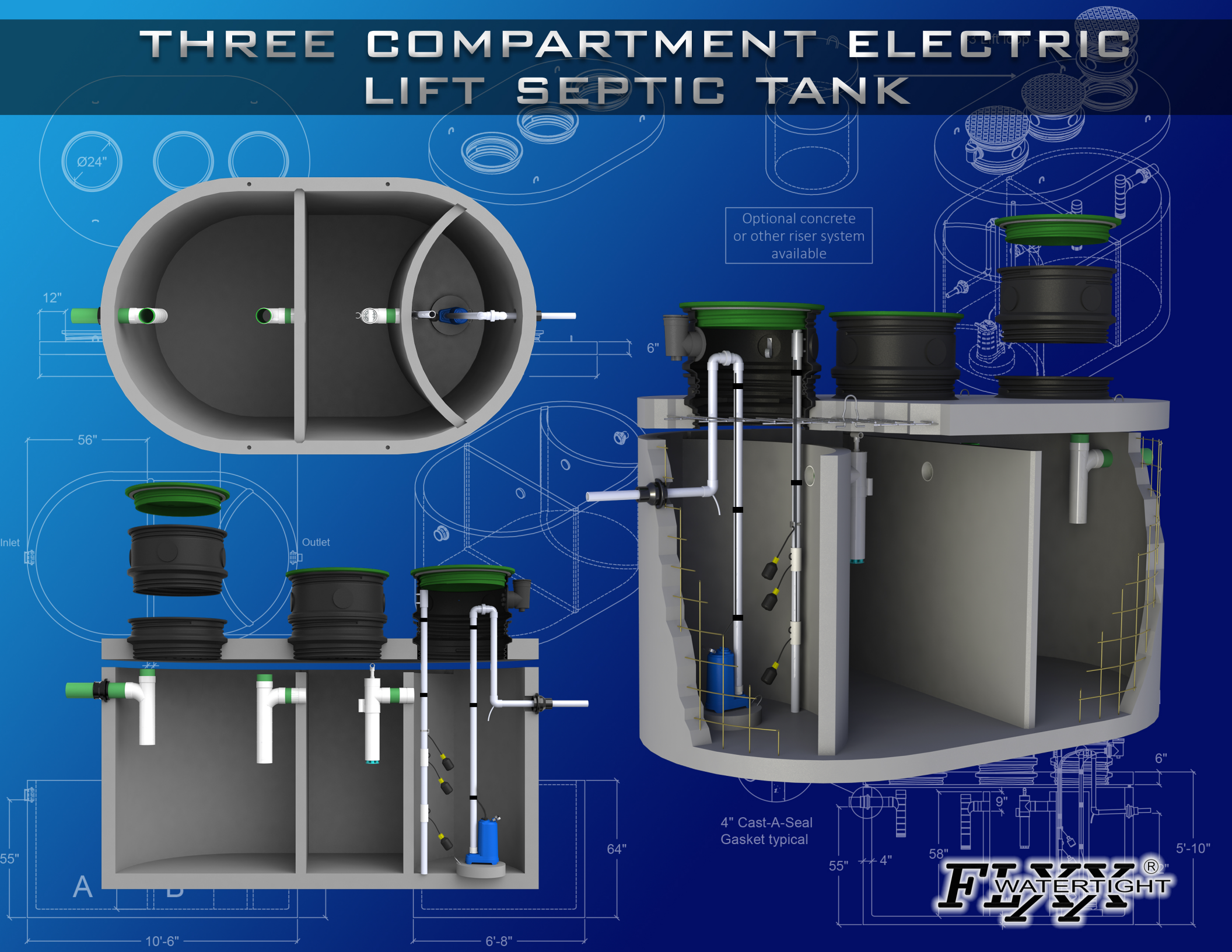
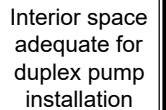


THREE COMPARTMENT ELECTRIC LIFT SEPTIC TANK



FLXX[®]

- Note: N.T.S.*

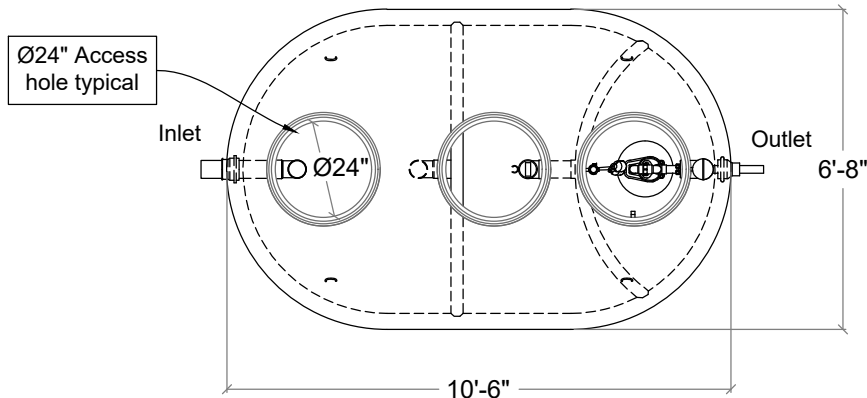
Front Range Precast Concrete, Inc.
5901 Dexter Street, Unit 102, Commerce City, CO 80022
Phone (303) 442-3207 - (800) 783-3207 - Fax (303) 442-3209
www.flxx.com

1500 Gal. Three Compartment Electric Lift Septic Tank 3.0

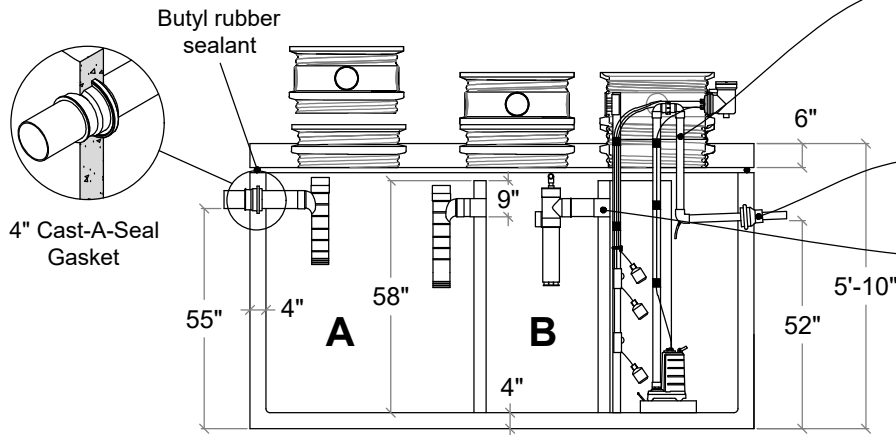
FLXX

FLXX

PLAN



SECTION



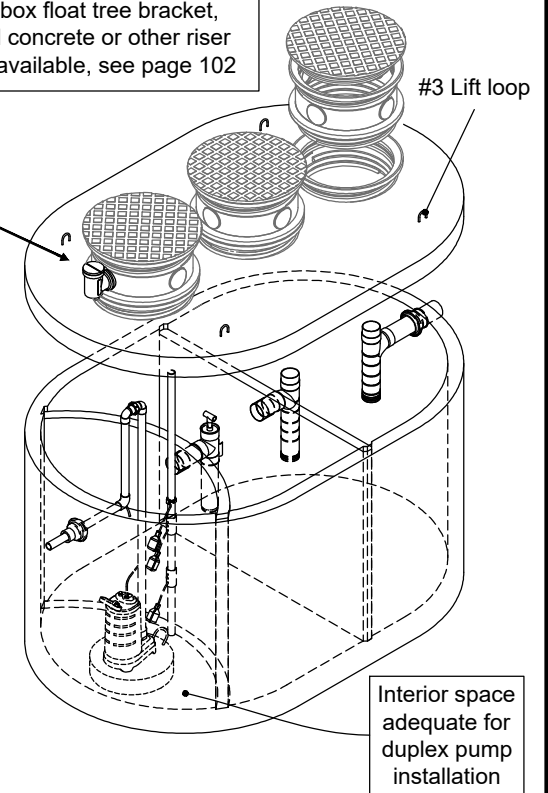
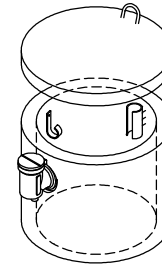
Effluent pump (per specification) / alarm box, float tree, control switches installed and pump plumbed to stub-out including preassembled pipes and fittings.

Connections to electrical source by others.

Sealed baffle wall. Install effluent filter at this location.

- Monolithic tank meets ASTM C-1227 Spec. for water and wastewater structures.
- Butyl rubber sealant meets Fed. Spec. SS-S-210A. (Provided with tank)
- All plumbing shown in diagram is 4" SDR 35. (Provided with tank)
- Follow standard practice for installation of underground precast concrete structures. (See page 2 for ASTM C-891 Summary)

2' X 1' Modified riser with Orenco splice box float tree bracket, optional concrete or other riser system available, see page 102



Note: N.T.S.

Part #	Capacities (gallons)		Lift Station Chamber	Discharge per Cycle	Approximate Weights			
	A	B			Tank	Lid	Baffle Walls	Total
PCA-000-268	785	500	250 Gal.	Variable 6.0 Gal. / Vertical inch	9,615 lbs	3,900 lbs	2,220 lbs	15,735 lbs
Total Capacity: 1535 gallons								

FLXX®
WATERTIGHT

Front Range Precast Concrete, Inc.

5901 Dexter Street, Unit 102, Commerce City, CO 80022

Phone (303) 442-3207 - (800) 783-3207 - Fax (303) 442-3209

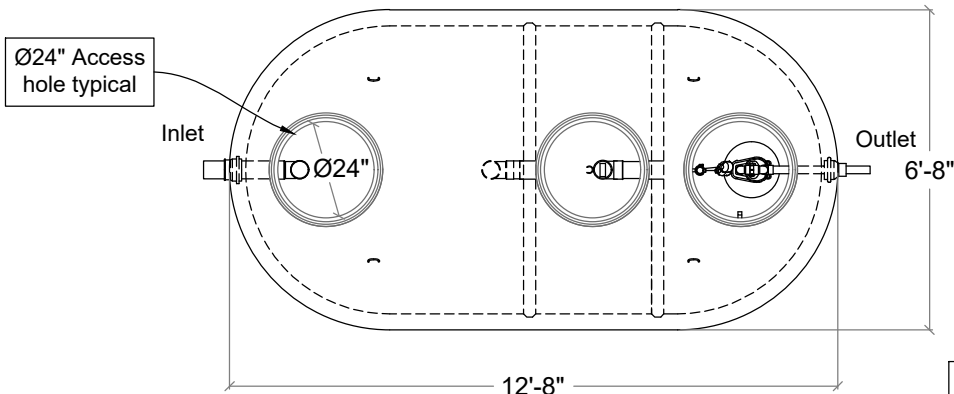
www.flxx.com

2000 Gal. Three Compartment Electric Lift Septic Tank

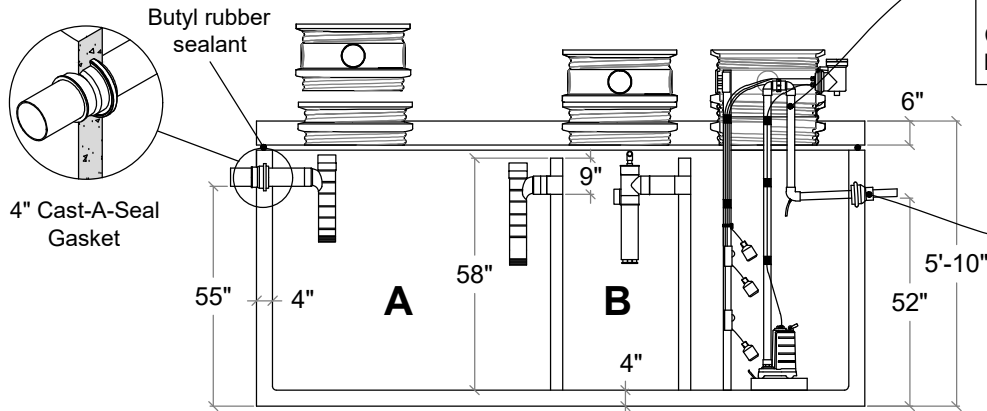
FLXX®

FLXX®

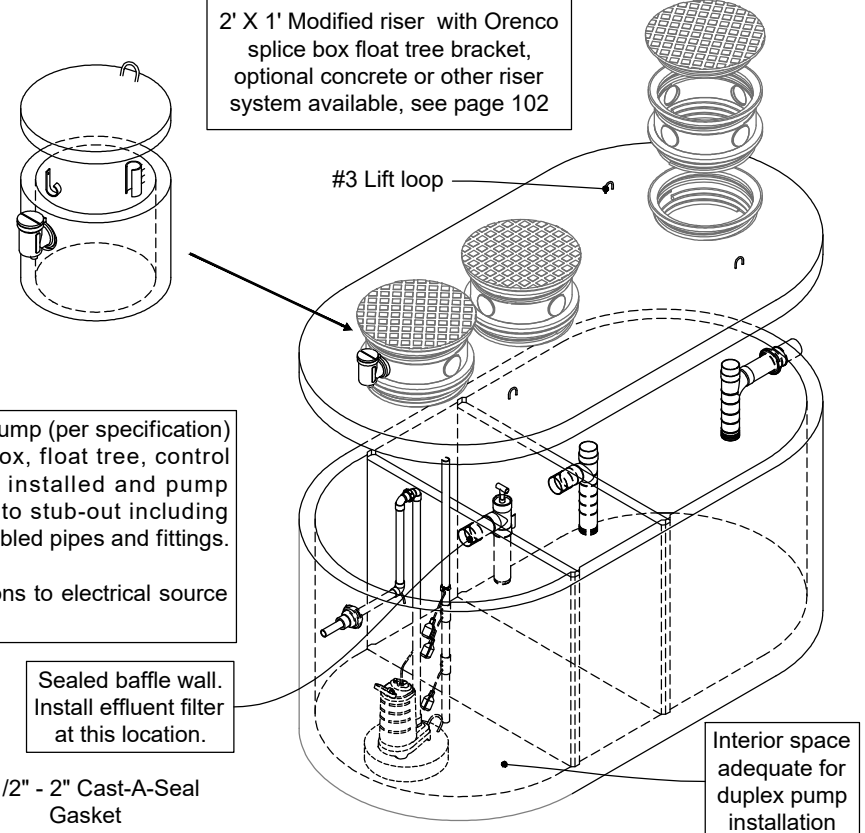
PLAN



SECTION



Note: N.T.S.



- Monolithic tank meets ASTM C-1227 Spec. for water and wastewater structures.
- Butyl rubber sealant meets Fed. Spec. SS-S-210A. (Provided with tank)
- All plumbing shown in diagram is 4" SDR 35. (Provided with tank)
- Follow standard practice for installation of underground precast concrete structures. (See page 2 for ASTM C-891 Summary)

Part #	Capacities (gallons)		Lift Station Chamber	Discharge per Cycle	Approximate Weights			
	A	B			Tank	Lid	Baffle Walls	Total
PCA-000-269	1000	500	500 Gal.	Variable 10.5 Gal. / Vertical inch	11,690 lbs	5,145 lbs	2,220 lbs	19,055 lbs
Total Capacity: 2000 gallons								

FLXX®
WATERTIGHT

Front Range Precast Concrete, Inc.

5901 Dexter Street, Unit 102, Commerce City, CO 80022

Phone (303) 442-3207 - (800) 783-3207 - Fax (303) 442-3209

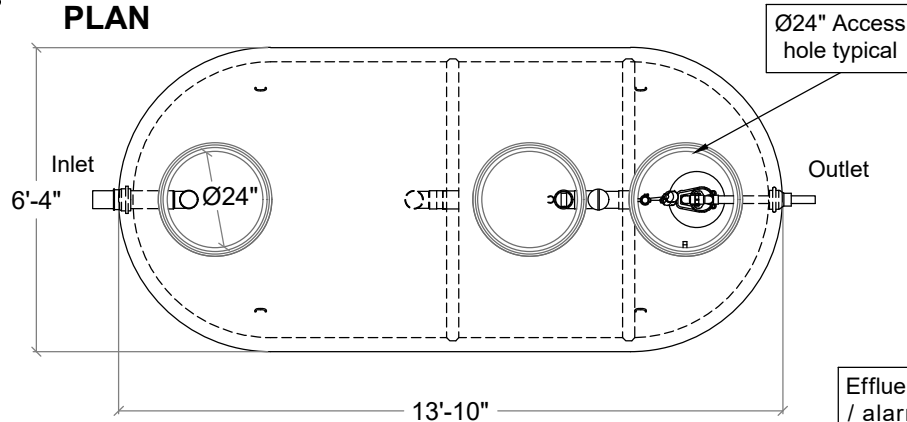
www.flxx.com

2500 Gal. Three Compartment Electric Lift Septic Tank

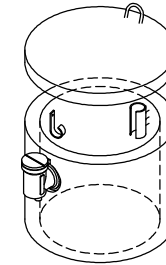
FLXX®

FLXX®

PLAN



2' X 1' Modified riser with Orenco splice box float tree bracket, optional concrete or other riser system available, see page 102



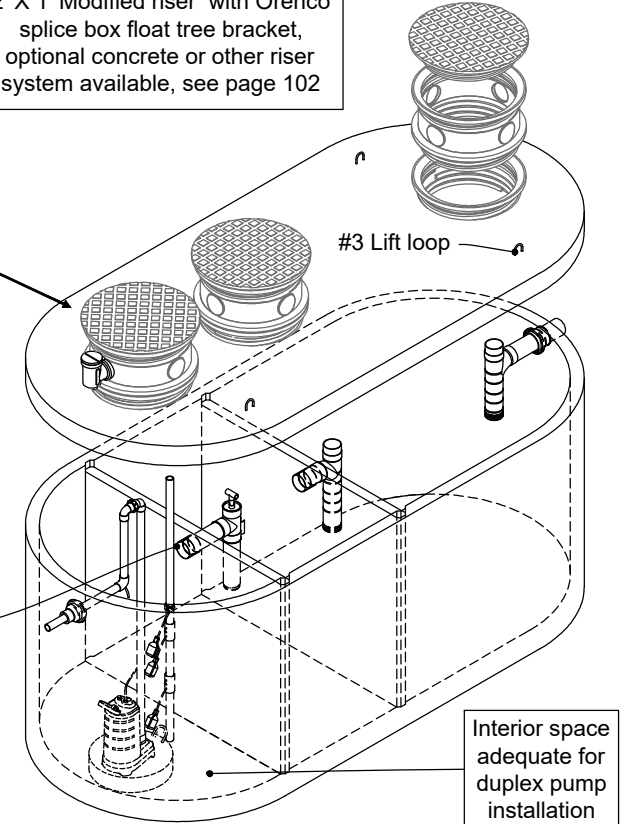
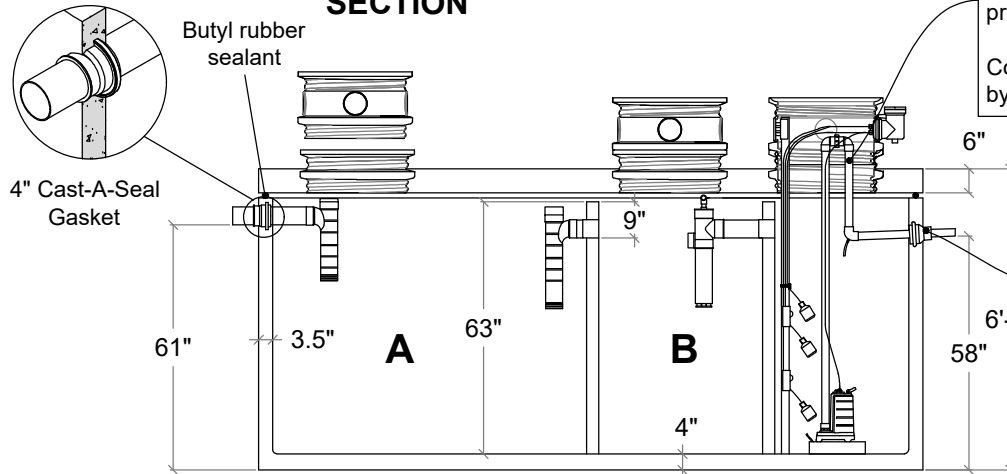
Effluent pump (per specification) / alarm box, float tree, control switches installed and pump plumbed to stub-out including preassembled pipes and fittings.

Connections to electrical source by others.

Sealed baffle wall. Install effluent filter at this location.

1 1/2" - 2" Cast-A-Seal Gasket

SECTION



- Monolithic tank meets ASTM C-1227 Spec. for water and wastewater structures.
- Butyl rubber sealant meets Fed. Spec. SS-S-210A. (Provided with tank)
- All plumbing shown in diagram is 4" SDR 35. (Provided with tank)
- Follow standard practice for installation of underground precast concrete structures. (See page 2 for ASTM C-891 Summary)

Note: N.T.S.

Part #	Capacities (gallons)		Lift Station Chamber	Discharge per Cycle	Approximate Weights			
	A	B			Tank	Lid	Baffle Walls	Total
PCA-000-355	1,145	780	525 Gal.	Variable 9.2 Gal. / Vertical inch	11,890 lbs	5,160 lbs	2,300 lbs	19,350 lbs
Total Capacity: 2450 gallons								

FLXX®
WATERTIGHT

Front Range Precast Concrete, Inc.

5901 Dexter Street, Unit 102, Commerce City, CO 80022

Phone (303) 442-3207 - (800) 783-3207 - Fax (303) 442-3209

www.flxx.com

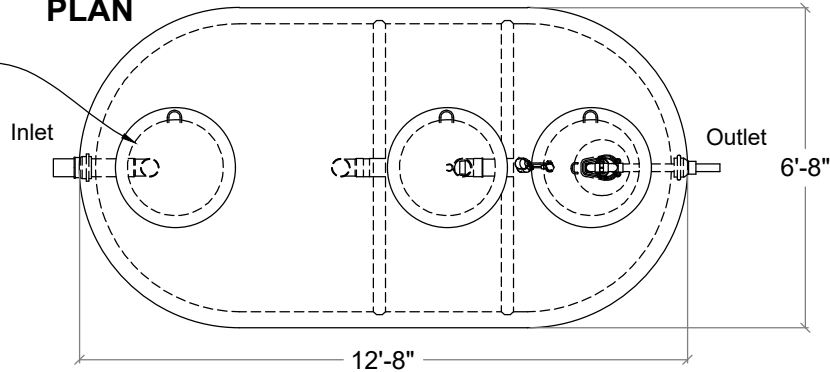
3250 Gal. Three Compartment Electric Lift Septic Tank

FLXX

FLXX

Ø24" Access hole typical

PLAN

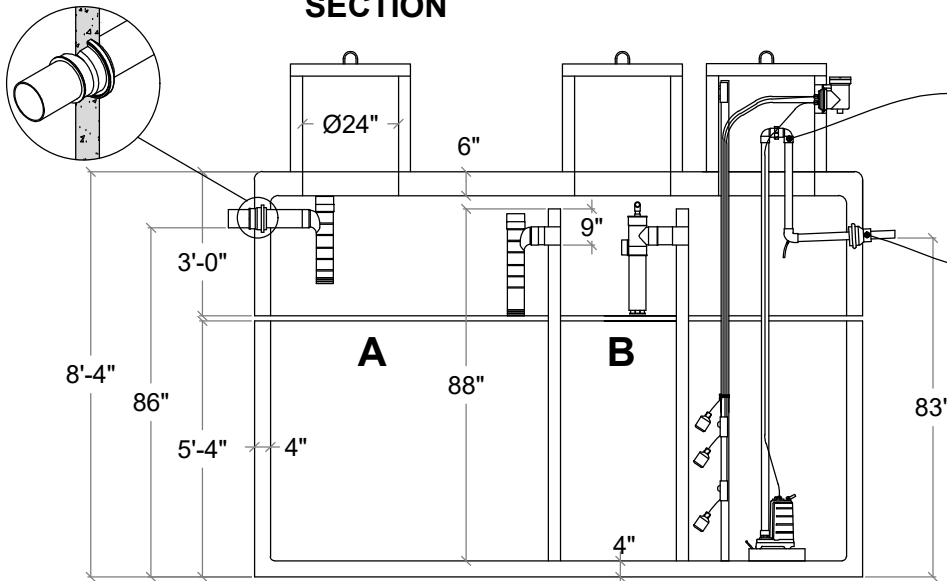


2' X 2' Modified riser with Orenco splice box float tree bracket, optional concrete or other riser system available, see page 102

All plumbing shown in diagram is 4" SDR 35. (Provided with tank)

4" Cast-A-Seal Gasket

SECTION



Effluent pump (per specification) / alarm box, float tree, control switches installed and pump plumbed to stub-out including preassembled pipes and fittings.

Connections to electrical source by others.

1-1/12" - 2" Cast-A-Seal Gasket

Sealed baffle wall. Install effluent filter at this location.

Interior space adequate for duplex pump installation

Note: N.T.S.

- Monolithic tank meets ASTM C-1227 Spec. for water and wastewater structures.
- Various lid and riser options available.
- See page 114 for assembly procedure.
- Follow standard practice for installation of underground precast concrete structures. (See page 2 for ASTM C-891 Summary)

Part #	Capacities (gallons)		Lift Station Chamber	Discharge per Cycle	Approximate Weights			
	A	B			Tank	Lid	Baffle Walls	Total
PCA-000-342	1,685	815	865 Gal.	Variable 10.5 Gal. / Vertical inch	11,690 lbs	7,715 lbs	3,180 lbs	22,585 lbs
Total Capacity: 3365 gallons								

FLXX®
WATERTIGHT

Front Range Precast Concrete, Inc.

5901 Dexter Street, Unit 102, Commerce City, CO 80022

Phone (303) 442-3207 - (800) 783-3207 - Fax (303) 442-3209

www.flxx.com