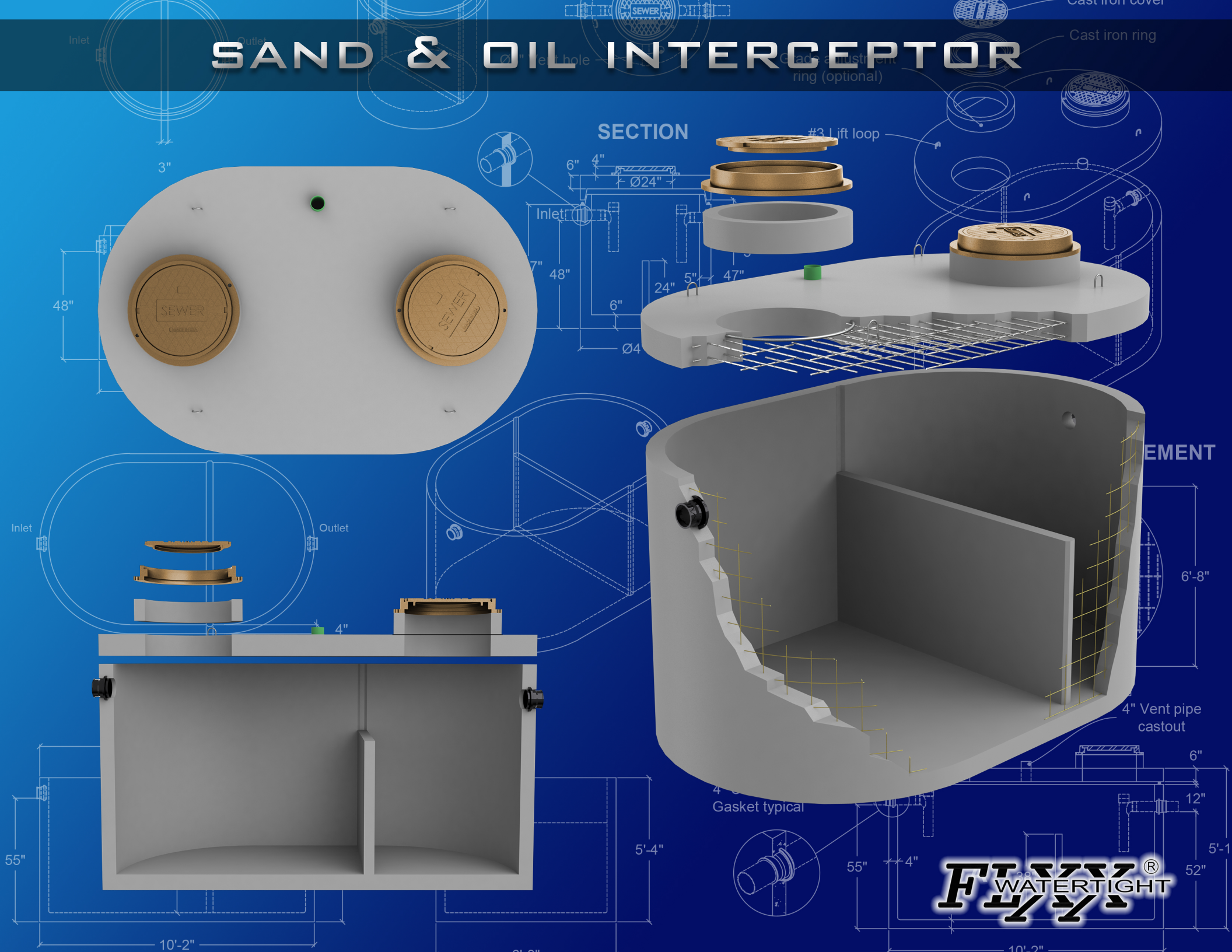


SAND & OIL INTERCEPTOR



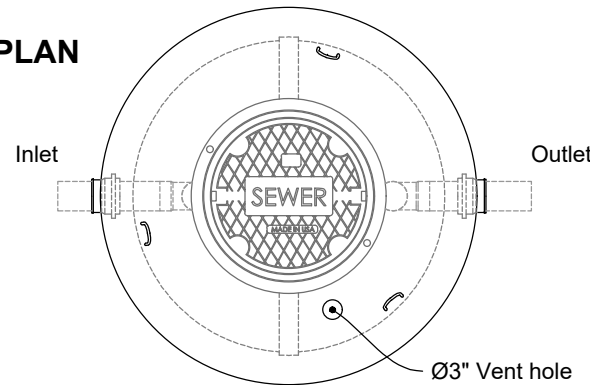
400 Gal. Sand & Oil Interceptor

FLXX

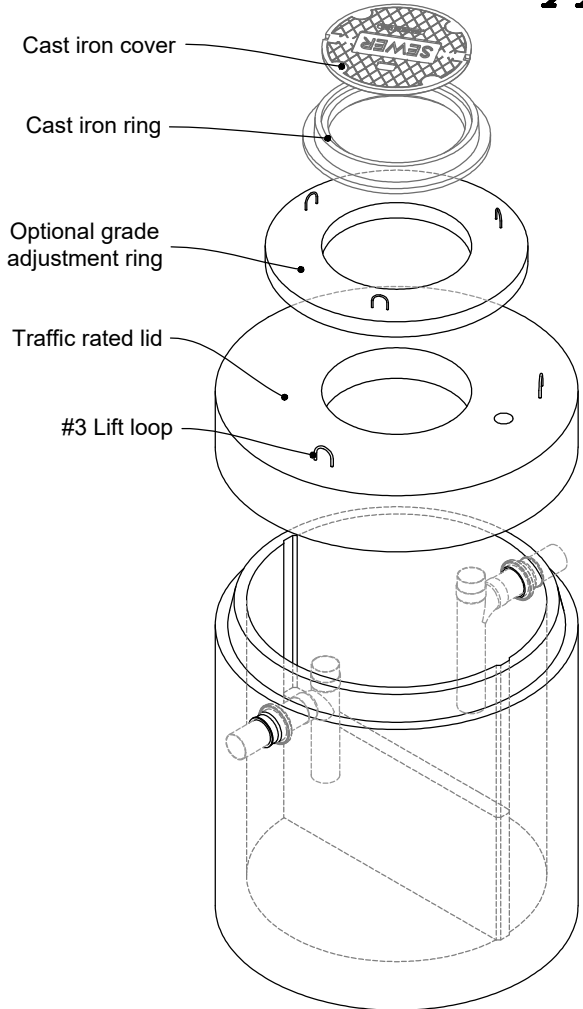
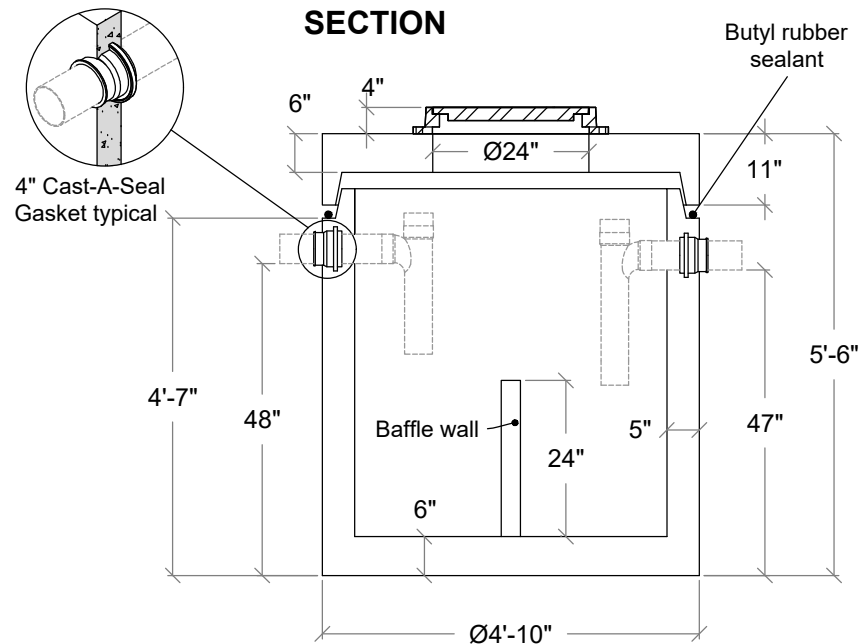
FLXX

- PCA-000-328
- Secondary chamber volume equal to 1/2 total capacity.
- Verify compliance with local regulations. Follow standard practice for installation of underground precast concrete structures. (See page 2 for ASTM C-891 Summary)
- Tank meets or exceeds ASTM C-478 Specifications, ASSHTO H-20 Traffic Rating Specifications.
- Butyl rubber sealant meets or exceeds Fed. Spec. SS-S-210A. (Provided with tank)
- Plumbing provided by others.

PLAN



SECTION



Note: N.T.S.

FLXX®
WATERTIGHT

Front Range Precast Concrete, Inc.

5901 Dexter Street, Unit 102, Commerce City, CO 80022

Phone (303) 442-3207 - (800) 783-3207 - Fax (303) 442-3209

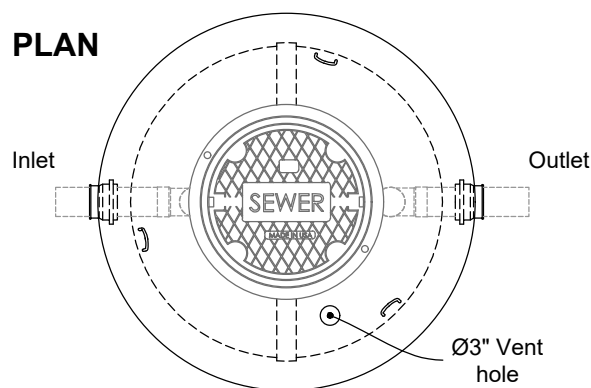
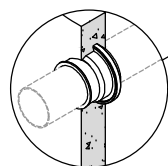
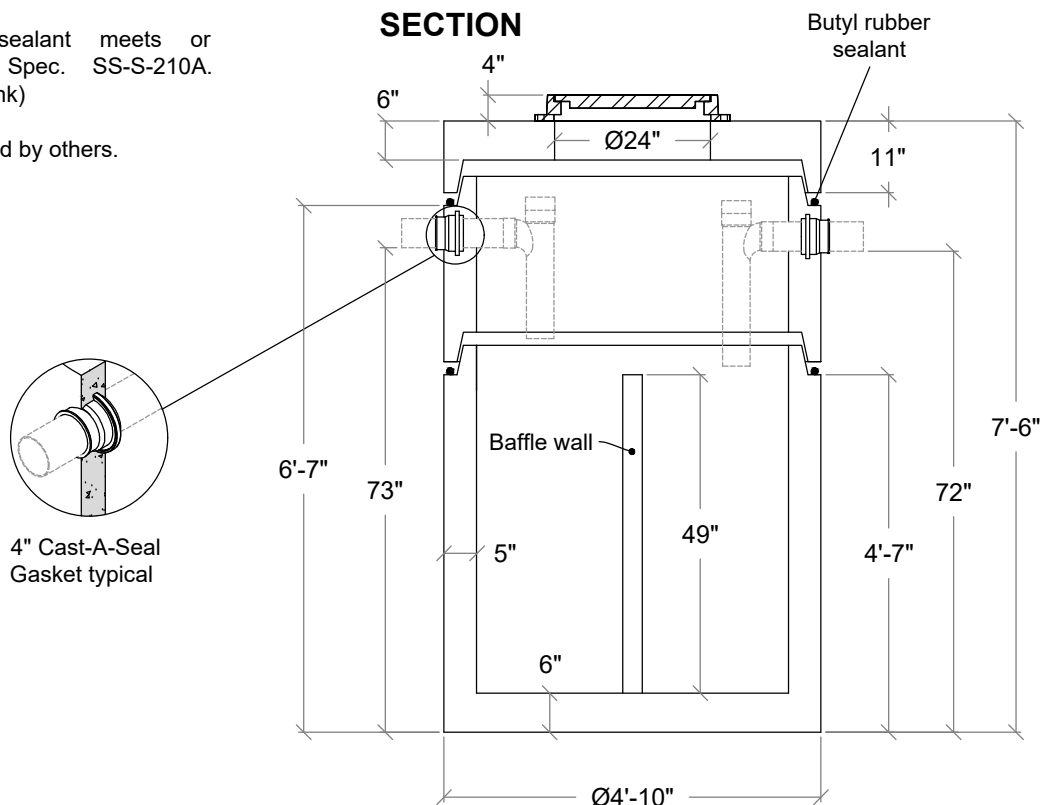
www.flxx.com

FLXX

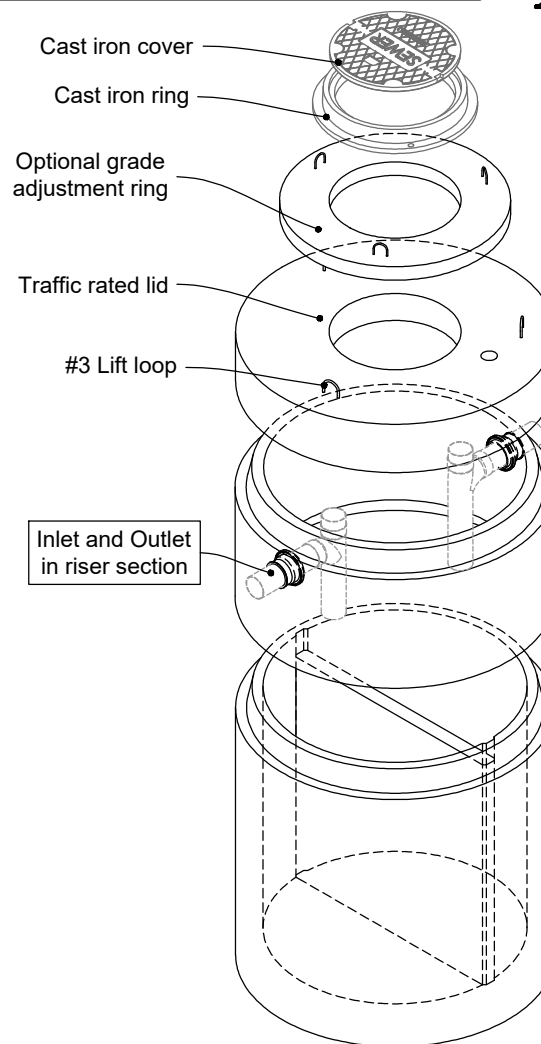
500 Gal. Sand & Oil Interceptor

FLXX

- PCA-000-329
- Secondary chamber volume equal to 1/2 total capacity.
- Verify compliance with local regulations. Follow standard practice for installation of underground precast concrete structures. (See page 2 for ASTM C-891 Summary)
- Tank meets or exceeds ASTM C-478 Specifications, ASSHTO H-20 Traffic Rating Specifications.
- Butyl rubber sealant meets or exceeds Fed. Spec. SS-S-210A. (Provided with tank)
- Plumbing provided by others.

PLAN**SECTION**

4" Cast-A-Seal
Gasket typical



Note: N.T.S.

FLXX®
WATERTIGHT

Front Range Precast Concrete, Inc.

5901 Dexter Street, Unit 102, Commerce City, CO 80022

Phone (303) 442-3207 - (800) 783-3207 - Fax (303) 442-3209

www.flxx.com

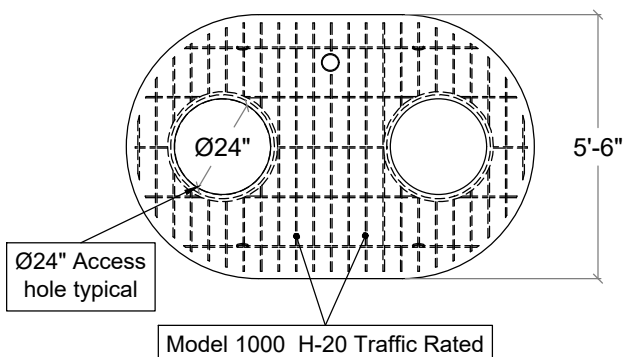
1000 Gal. Sand & Oil Interceptor

FLXX

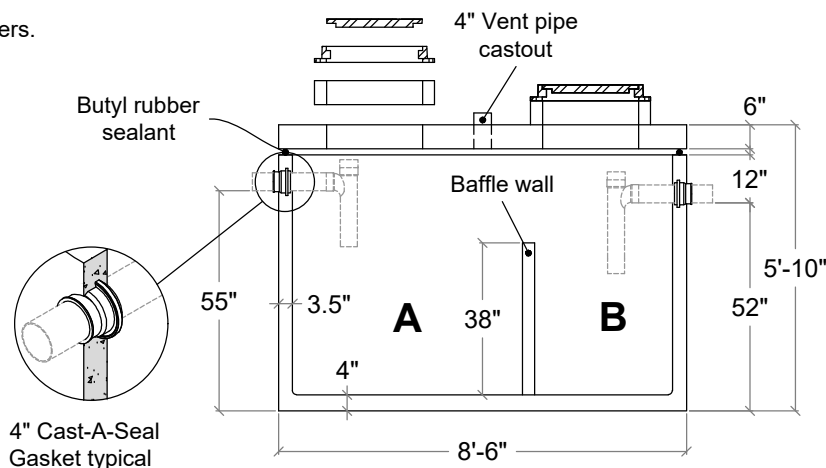
FLXX

- Secondary chamber volume equal to 1/3 total capacity.
- Verify compliance with local regulations. Follow standard practice for installation of underground precast concrete structures. (See page 2 for ASTM C-891 Summary)
- Tank meets or exceeds ASTM C-478 Specifications, ASSHTO H-20 Traffic Rating Specifications.
- Butyl rubber sealant meets or exceeds Fed. Spec. SS-S-210A. (Provided with tank)
- Plumbing provided by others.

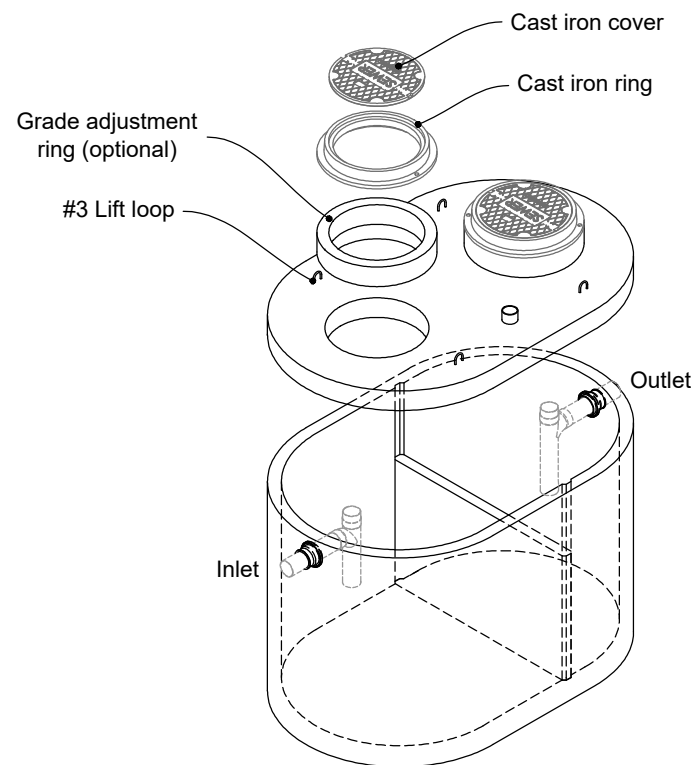
TOP SLAB - TYPICAL REINFORCEMENT



SECTION



Note: N.T.S.



Part #	Capacities				Approximate Weights			
	Section / Gal.		Cubic Ft.		Tank	Lid	Baffle Wall	Total
	A	B	A	B				
PCA-000-274	640	430	83.5	56	6,995 lbs	2,550 lbs	595 lbs	10,140 lbs
Total Capacity: 1070 gallons								

FLXX®
WATERTIGHT

Front Range Precast Concrete, Inc.

5901 Dexter Street, Unit 102, Commerce City, CO 80022

Phone (303) 442-3207 - (800) 783-3207 - Fax (303) 442-3209

www.flxx.com

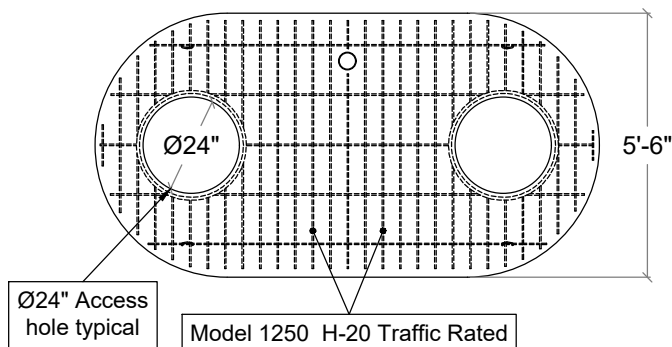
1250 Gal. Sand & Oil Interceptor

FLXX®

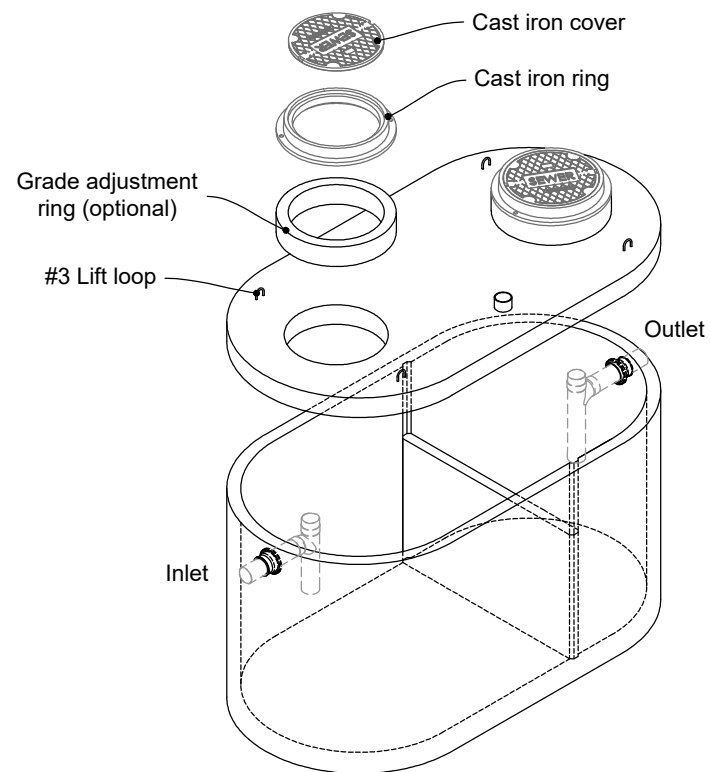
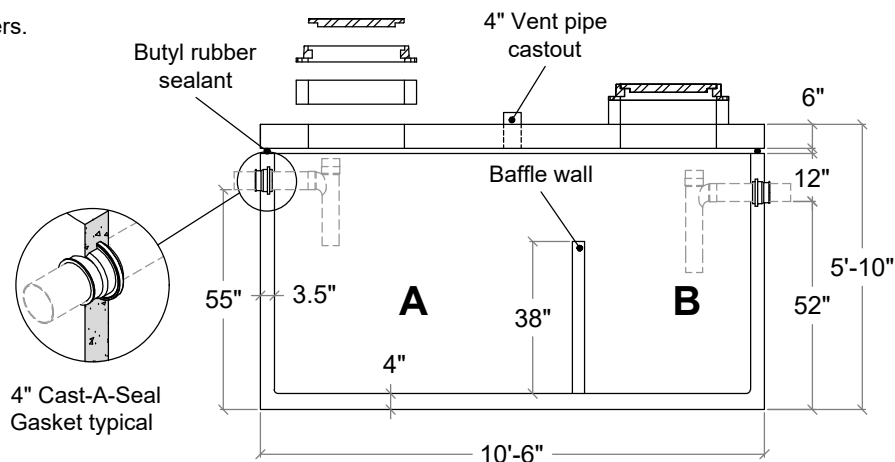
FLXX®

- Secondary chamber volume equal to 1/3 total capacity.
- Verify compliance with local regulations. Follow standard practice for installation of underground precast concrete structures. (See page 2 for ASTM C-891 Summary)
- Tank meets or exceeds ASTM C-478 Specifications, ASSHTO H-20 Traffic Rating Specifications.
- Butyl rubber sealant meets or exceeds Fed. Spec. SS-S-210A. (Provided with tank)
- Plumbing provided by others.

TOP SLAB - TYPICAL REINFORCEMENT



SECTION



Note: N.T.S.

Part #	Capacities				Approximate Weights			
	Section / Gal.		Cubic Ft.		Tank	Lid	Baffle Wall	Total
	A	B	A	B				
PCA-000-275	835	555	110	72	8,430 lbs	3,370 lbs	595 lbs	12,395 lbs
Total Capacity: 1390 gallons								

FLXX®
WATERTIGHT

Front Range Precast Concrete, Inc.

5901 Dexter Street, Unit 102, Commerce City, CO 80022

Phone (303) 442-3207 - (800) 783-3207 - Fax (303) 442-3209

www.flxx.com

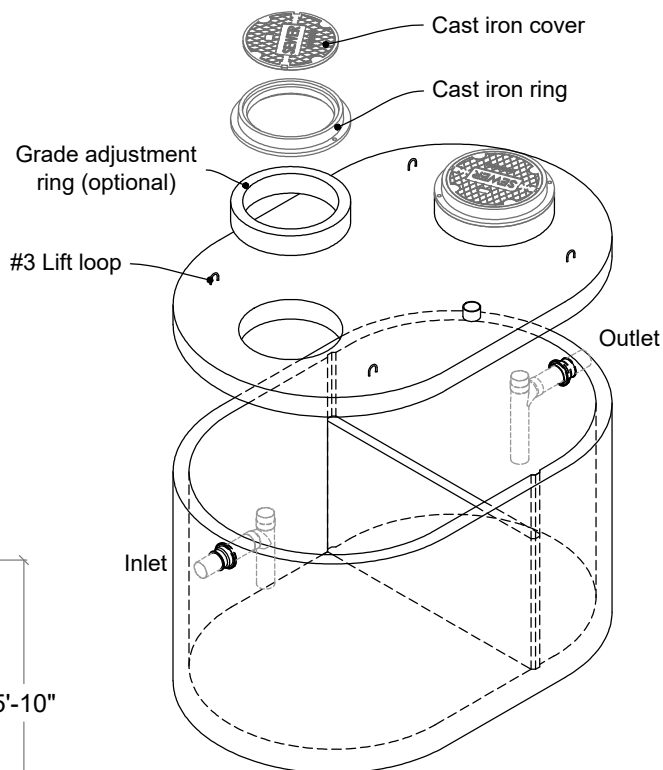
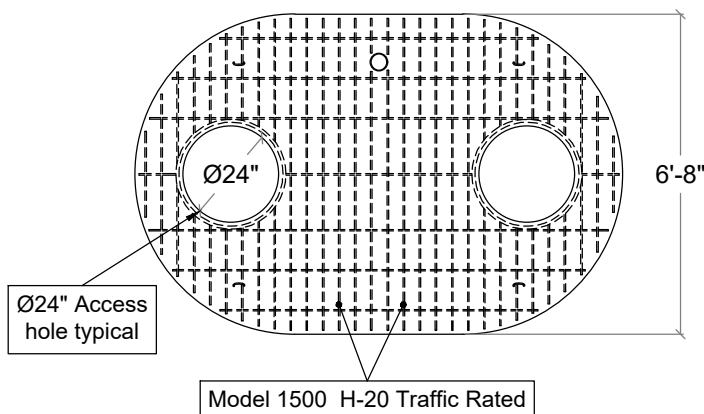
1500 Gal. Sand & Oil Interceptor

FLXX

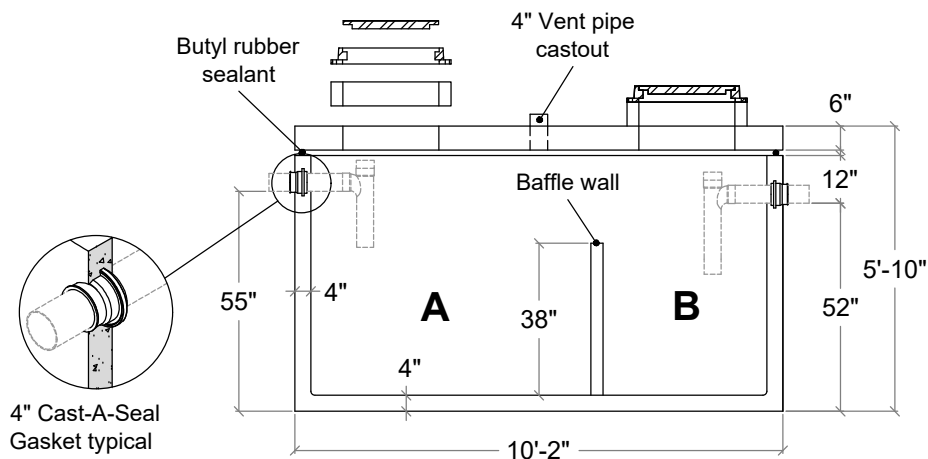
FLXX

- Secondary chamber volume equal to 1/3 total capacity.
- Verify compliance with local regulations. Follow standard practice for installation of underground precast concrete structures. (See page 2 for ASTM C-891 Summary)
- Tank meets or exceeds ASTM C-478 Specifications, ASSHTO H-20 Traffic Rating Specifications.
- Butyl rubber sealant meets or exceeds Fed. Spec. SS-S-210A. (Provided with tank)
- Plumbing provided by others.

TOP SLAB - TYPICAL REINFORCEMENT



SECTION



Note: N.T.S.

Part #	Capacities				Approximate Weights			
	Section / Gal.		Cubic Ft.		Tank	Lid	Baffle Wall	Total
	A	B	A	B				
PCA-000-276	920	615	120	80	9,615 lbs	3,900 lbs	725 lbs	14,240 lbs
Total Capacity: 1535 gallons								

FLXX®
WATERTIGHT

Front Range Precast Concrete, Inc.

5901 Dexter Street, Unit 102, Commerce City, CO 80022

Phone (303) 442-3207 - (800) 783-3207 - Fax (303) 442-3209

www.flxx.com

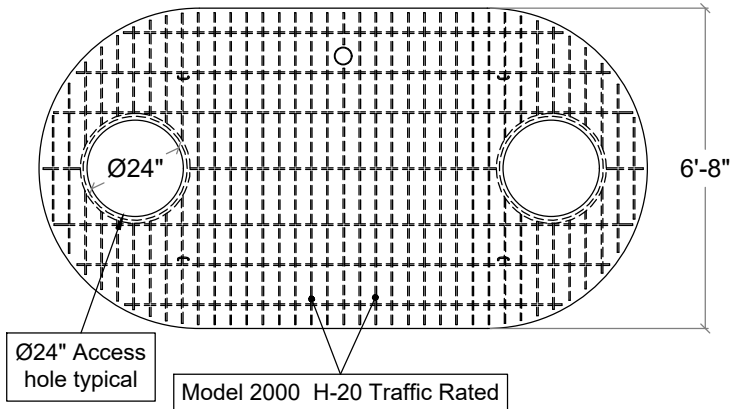
2000 Gal. Sand & Oil Interceptor

FLXX

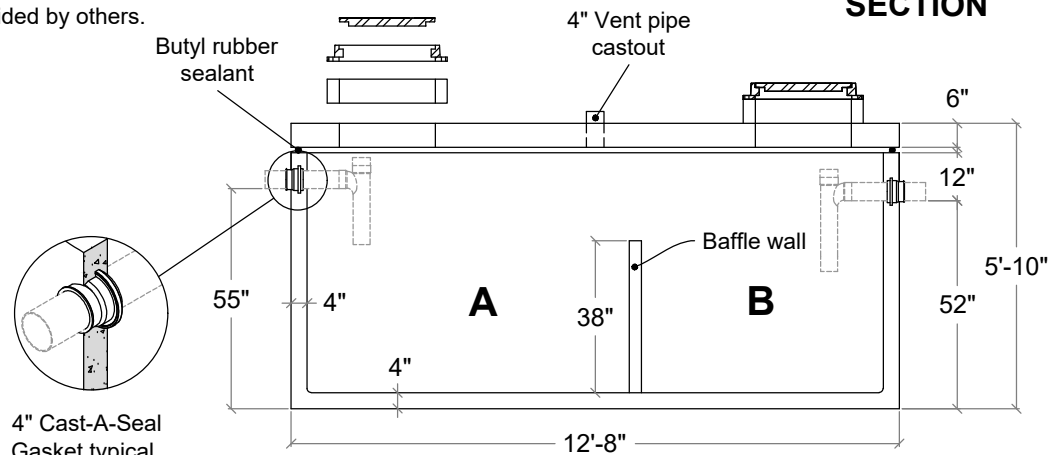
FLXX

- Secondary chamber volume equal to 1/3 total capacity.
- Verify compliance with local regulations. Follow standard practice for installation of underground precast concrete structures. (See page 2 for ASTM C-891 Summary)
- Tank meets or exceeds ASTM C-478 Specifications, ASSHTO H-20 Traffic Rating Specifications.
- Butyl rubber sealant meets or exceeds Fed. Spec. SS-S-210A. (Provided with tank)
- Plumbing provided by others.

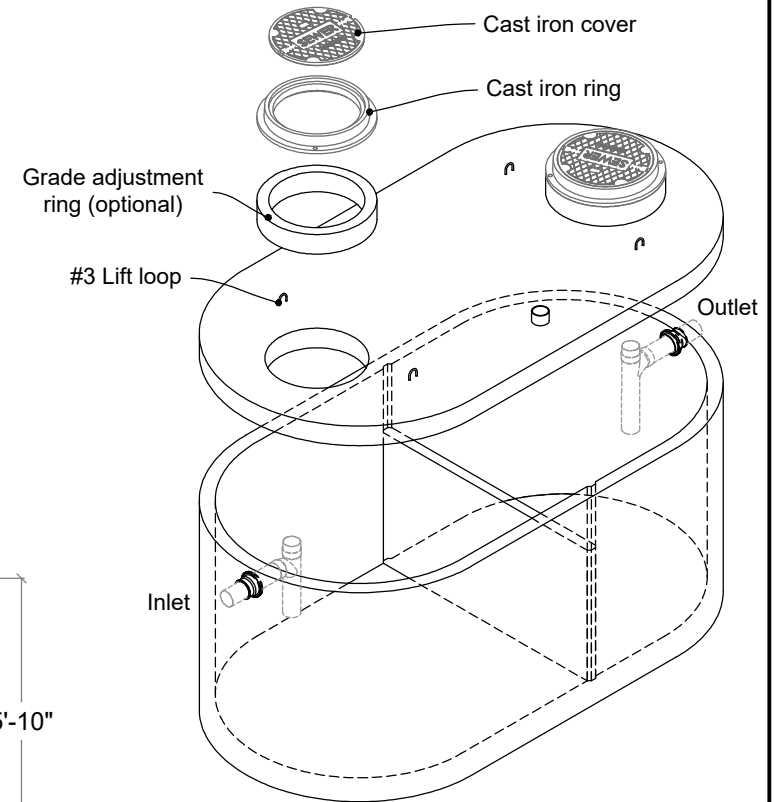
TOP SLAB - TYPICAL REINFORCEMENT



SECTION



Note: N.T.S.



Part #	Capacities				Approximate Weights			
	Section / Gal.		Cubic Ft.		Tank	Lid	Baffle Wall	Total
	A	B	A	B				
PCA-000-277	1200	800	156	104	11,690 lbs	5,145 lbs	725 lbs	17,560 lbs
Total Capacity: 2000 gallons								

FLXX®
WATERTIGHT

Front Range Precast Concrete, Inc.

5901 Dexter Street, Unit 102, Commerce City, CO 80022

Phone (303) 442-3207 - (800) 783-3207 - Fax (303) 442-3209

www.flxx.com

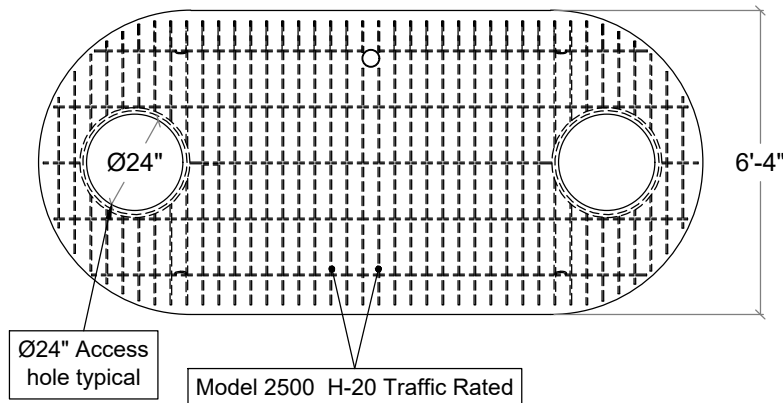
2500 Gal. Sand & Oil Interceptor

FLXX

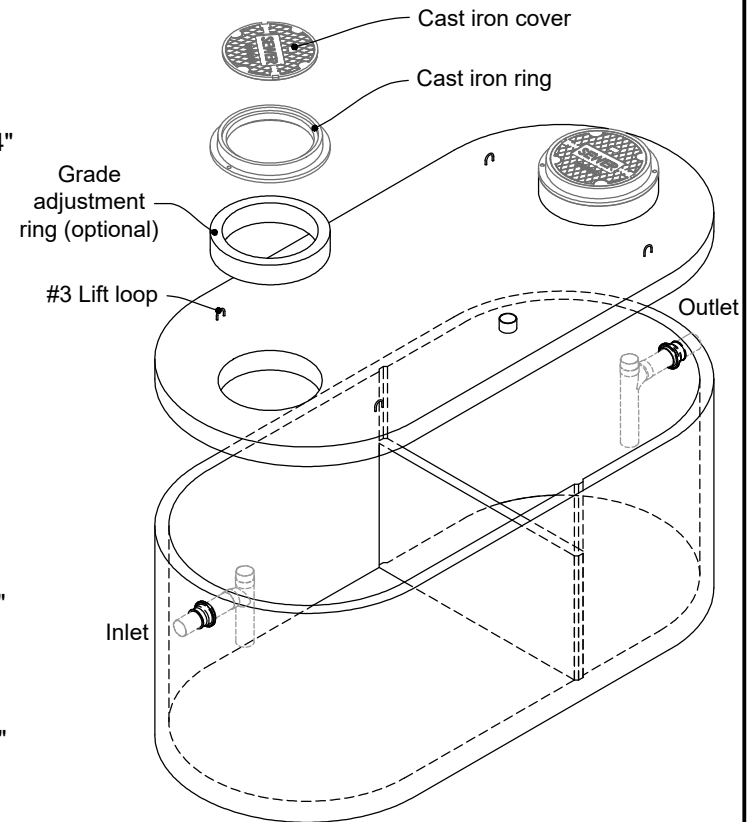
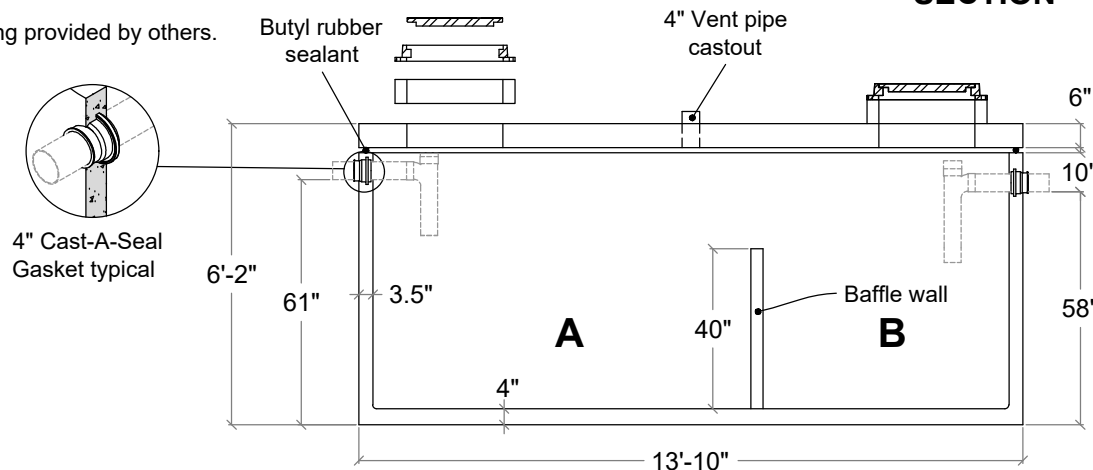
FLXX

- Secondary chamber volume equal to 1/3 total capacity.
- Verify compliance with local regulations. Follow standard practice for installation of underground precast concrete structures. (See page 2 for ASTM C-891 Summary)
- Tank meets or exceeds ASTM C-478 Specifications, ASSHTO H-20 Traffic Rating Specifications.
- Butyl rubber sealant meets or exceeds Fed. Spec. SS-S-210A. (Provided with tank)
- Plumbing provided by others.

TOP SLAB - TYPICAL REINFORCEMENT



SECTION



Note: N.T.S.

Part #	Capacities				Approximate Weights			
	Section / Gal.		Cubic Ft.		Tank	Lid	Baffle Wall	Total
PCA-000-324	A	B	A	B				
	1470	980	190	128	11,890 lbs	5,400 lbs	725 lbs	18,015 lbs
Total Capacity: 2450 gallons								

FLXX®
WATERTIGHT

Front Range Precast Concrete, Inc.

5901 Dexter Street, Unit 102, Commerce City, CO 80022

Phone (303) 442-3207 - (800) 783-3207 - Fax (303) 442-3209

www.flxx.com

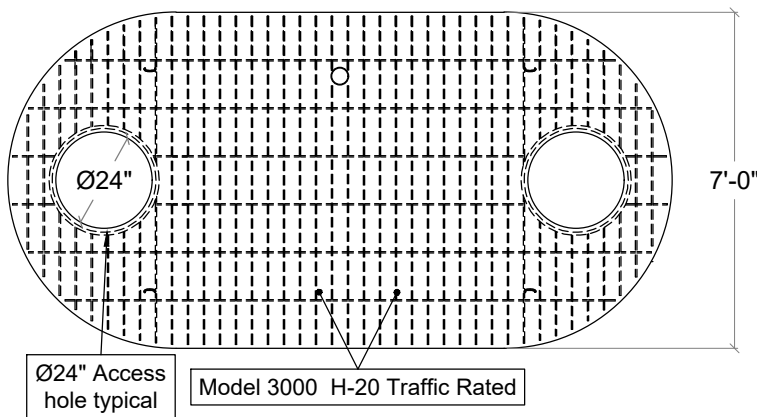
3000 Gal. Sand & Oil Interceptor

FLXX

FLXX

- Secondary chamber volume equal to 1/3 total capacity.
- Verify compliance with local regulations. Follow standard practice for installation of underground precast concrete structures. (See page 2 for ASTM C-891 Summary)
- Tank meets or exceeds ASTM C-478 Specifications, ASSHTO H-20 Traffic Rating Specifications.
- Butyl rubber sealant meets or exceeds Fed. Spec. SS-S-210A. (Provided with tank)
- Plumbing provided by others.

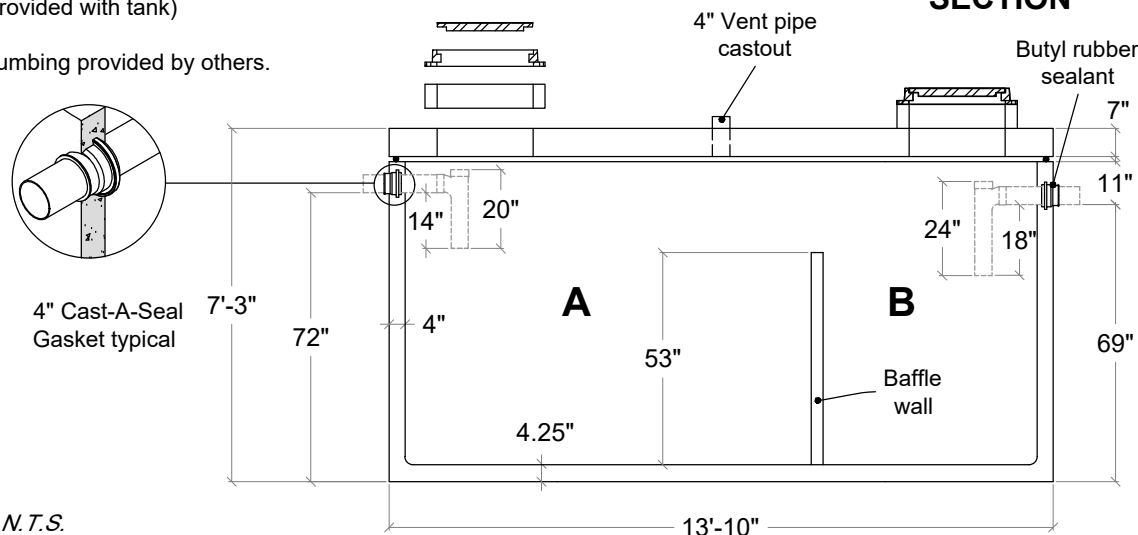
TOP SLAB - TYPICAL REINFORCEMENT



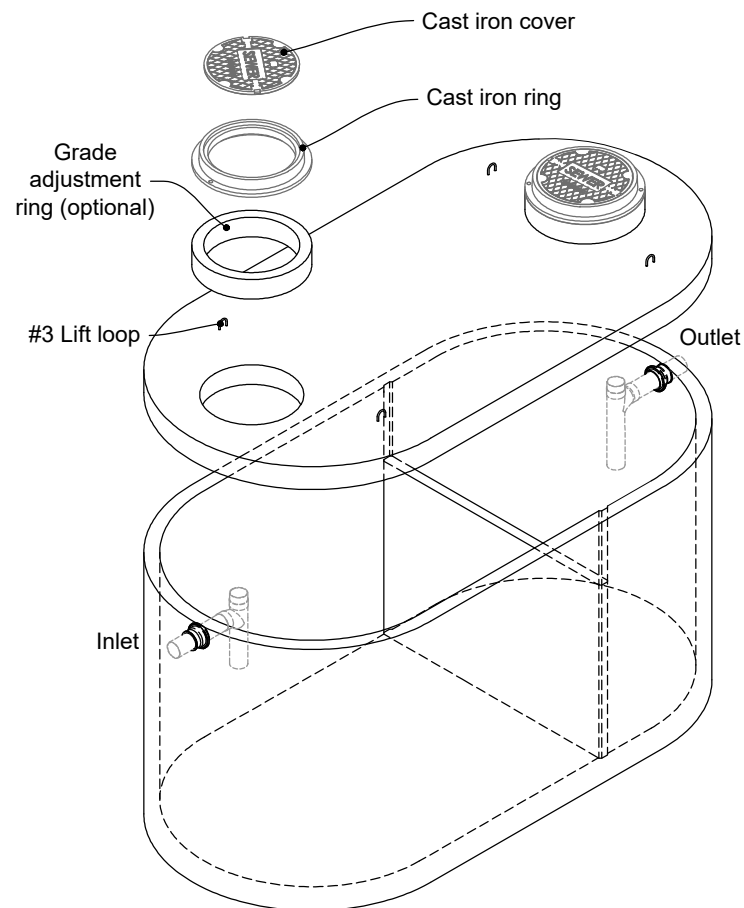
Ø24" Access hole typical

Model 3000 H-20 Traffic Rated

SECTION



Note: N.T.S.



Part #	Capacities				Approximate Weights			
	Section / Gal. A	B	Cubic Ft. A	B	Tank	Lid	Baffle Wall	Total
PCA-000-321	2012	1006	269	135	15,509 lbs	7,000 lbs	1,417 lbs	23,926 lbs
Total Capacity: 3018 gallons								

FLXX®
WATERTIGHT

Front Range Precast Concrete, Inc.

5901 Dexter Street, Unit 102, Commerce City, CO 80022

Phone (303) 442-3207 - (800) 783-3207 - Fax (303) 442-3209

www.flxx.com