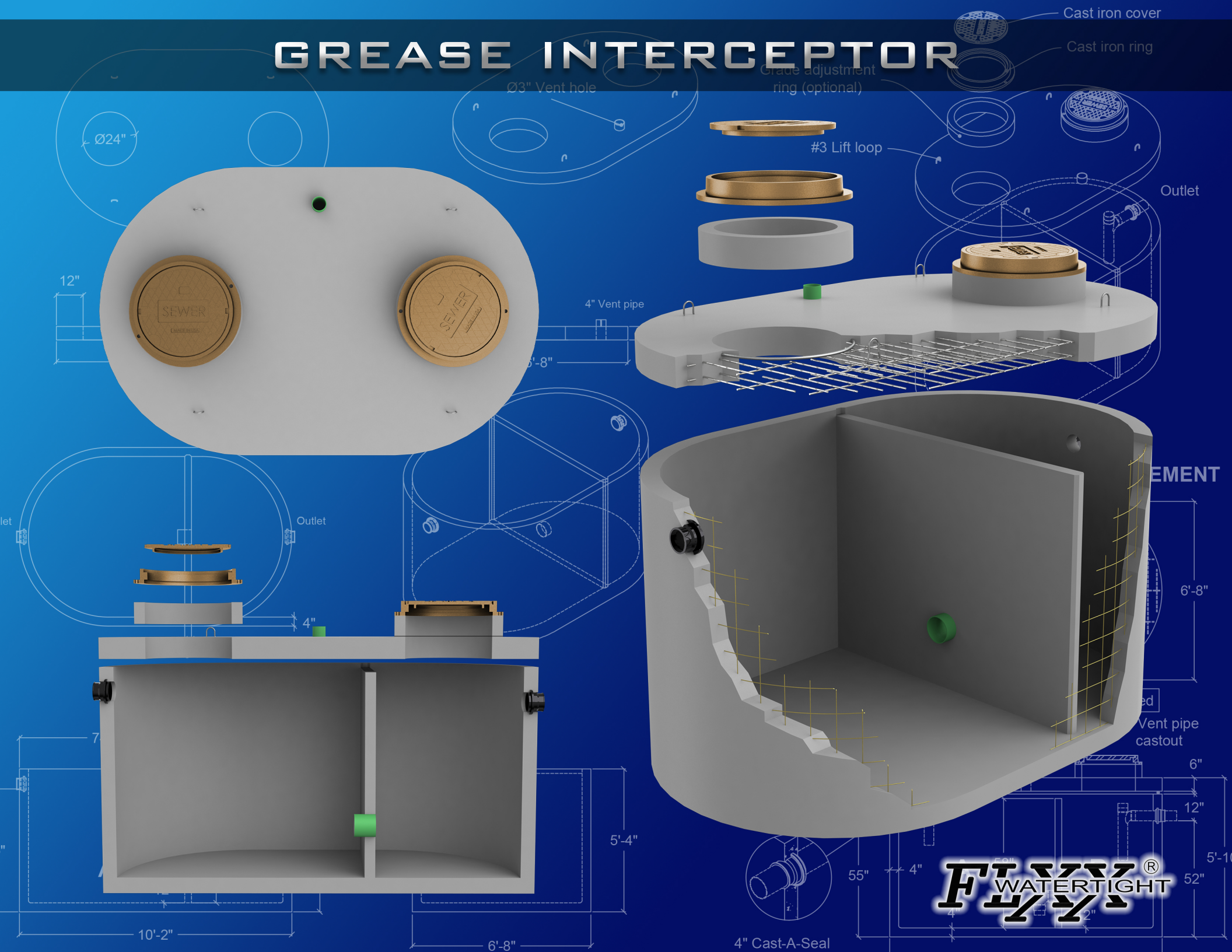


GREASE INTERCEPTOR



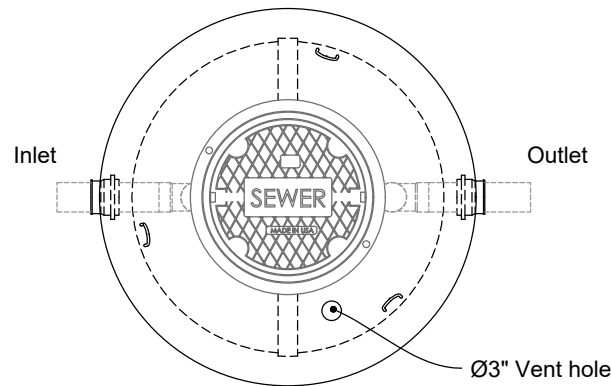
400 Gal. Grease Interceptor

FLXX

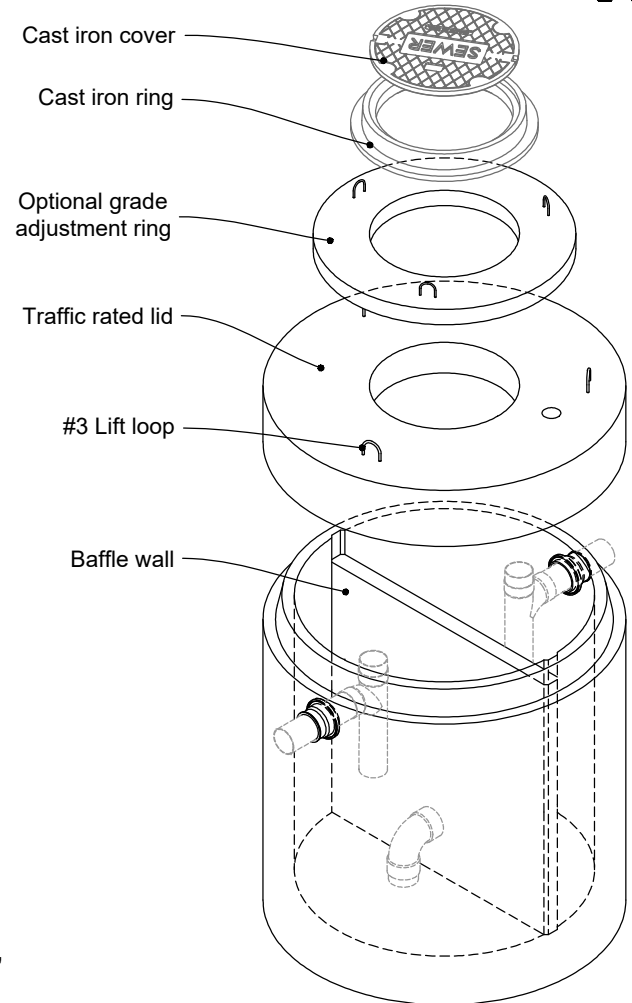
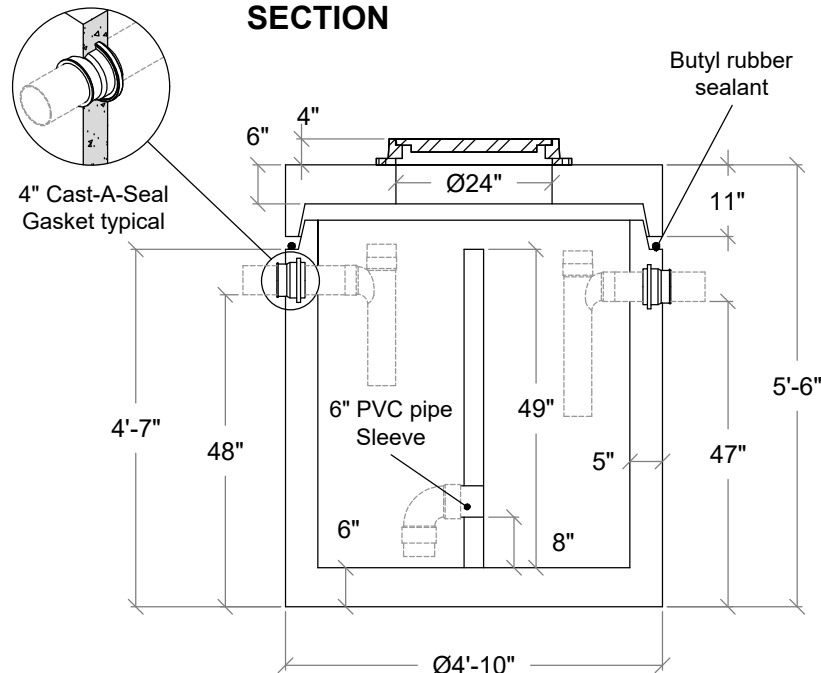
FLXX

- PCA-000-331
- Secondary chamber volume equal to 1/2 total capacity.
- Verify compliance with local regulations. Follow standard practice for installation of underground precast concrete structures. (See page 2 for ASTM C-891 Summary)
- Tank meets or exceeds ASTM C-478 Specifications, ASSHTO H-20 Traffic Rating Specifications.
- Butyl rubber sealant meets or exceeds Fed. Spec. SS-S-210A. (Provided with tank)
- Plumbing provided by others.

PLAN



SECTION



Note: N. T. S.

FLXX®
WATERTIGHT

Front Range Precast Concrete, Inc.

5901 Dexter Street, Unit 102, Commerce City, CO 80022

Phone (303) 442-3207 - (800) 783-3207 - Fax (303) 442-3209

www.flxx.com

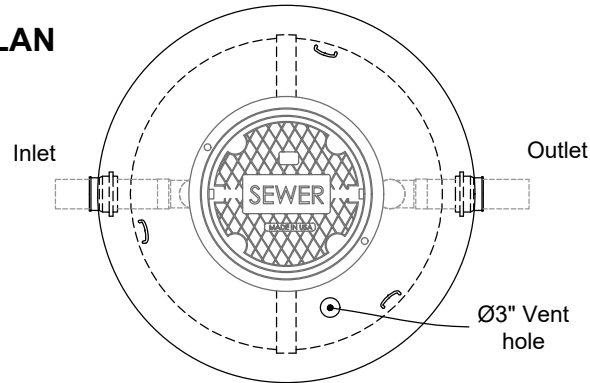
500 Gal. Grease Interceptor

FLXX

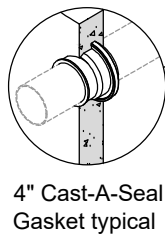
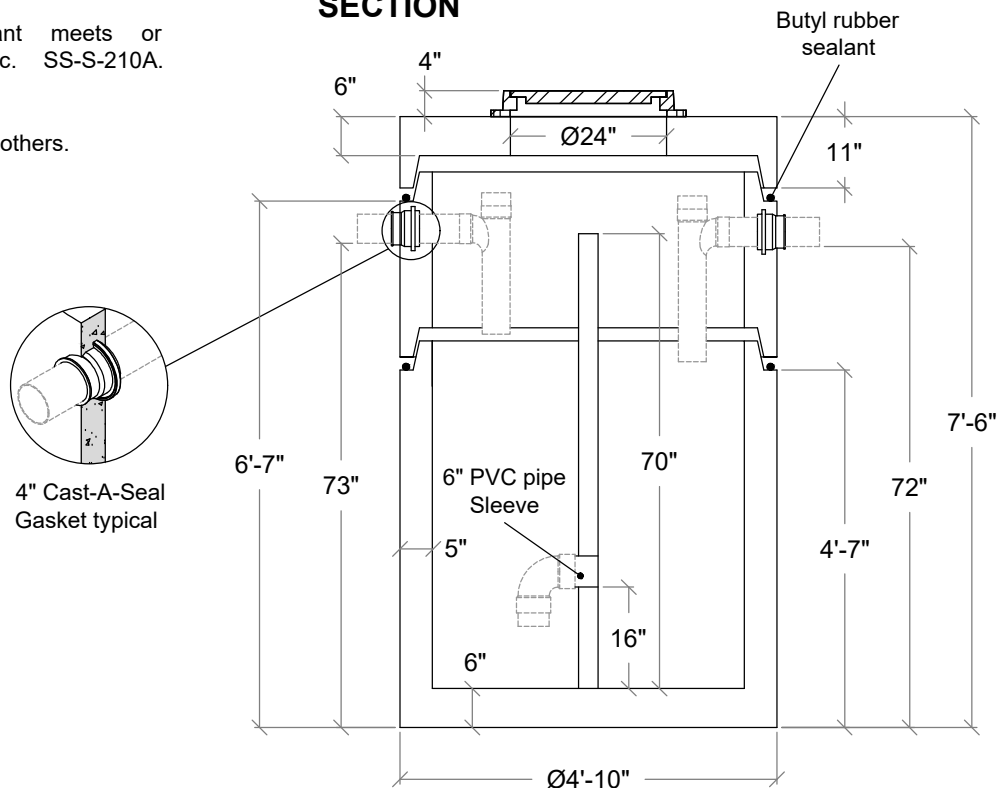
FLXX

- PCA-000-332
- Secondary chamber volume equal to 1/2 total capacity.
- Verify compliance with local regulations. Follow standard practice for installation of underground precast concrete structures. (See page 2 for ASTM C-891 Summary)
- Tank meets or exceeds ASTM C-478 Specifications, ASSHTO H-20 Traffic Rating Specifications.
- Butyl rubber sealant meets or exceeds Fed. Spec. SS-S-210A. (Provided with tank)
- Plumbing provided by others.

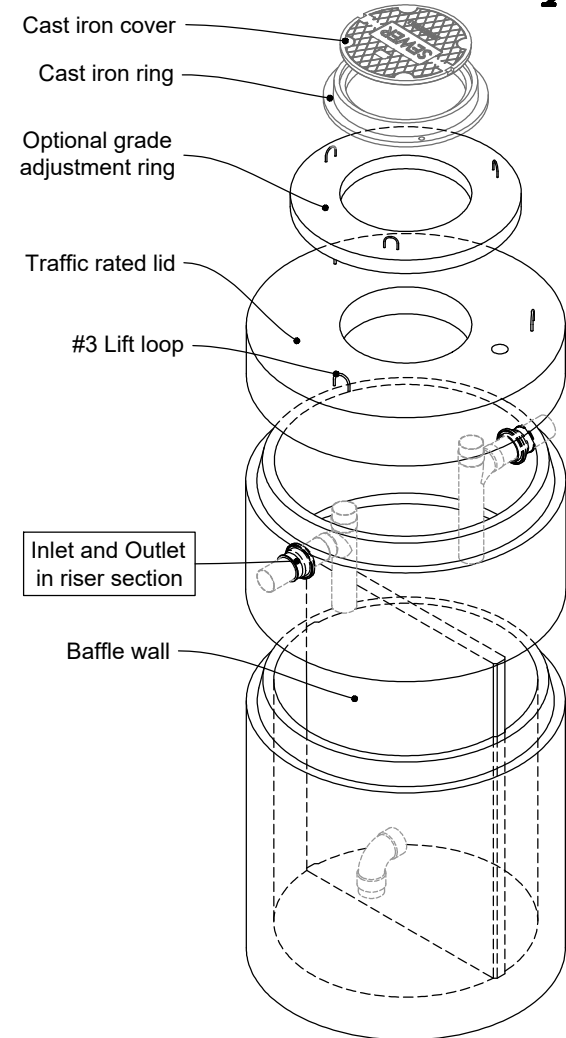
PLAN



SECTION



4" Cast-A-Seal Gasket typical



FLXX®
WATERTIGHT

Front Range Precast Concrete, Inc.

5901 Dexter Street, Unit 102, Commerce City, CO 80022

Phone (303) 442-3207 - (800) 783-3207 - Fax (303) 442-3209

www.flxx.com

Note: N.T.S.

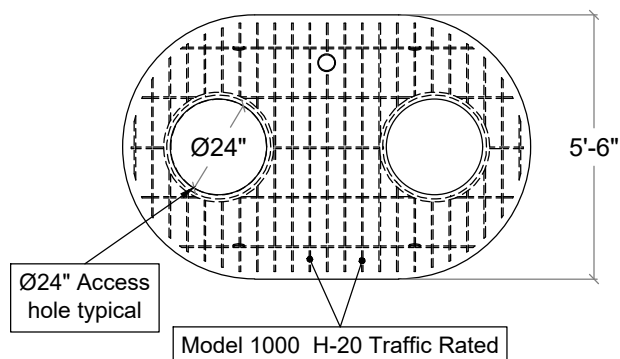


1000 Gal. Grease Interceptor

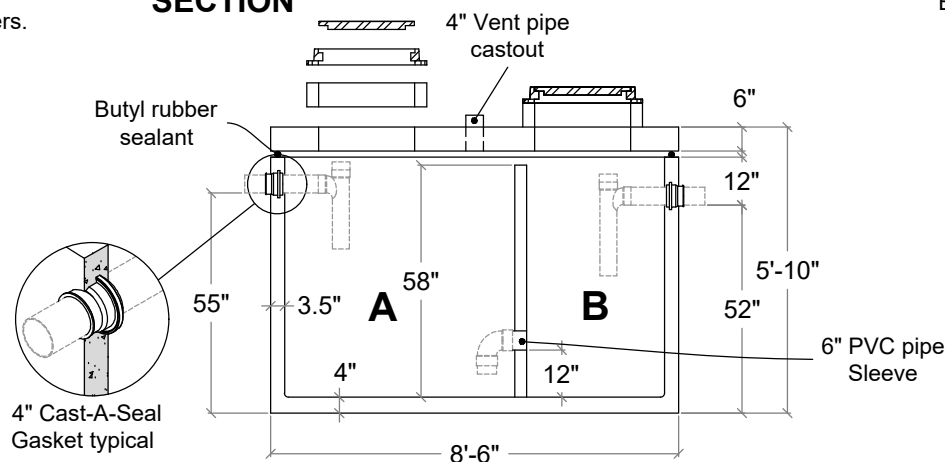


- Secondary chamber volume equal to 1/3 total capacity.
- Verify compliance with local regulations. Follow standard practice for installation of underground precast concrete structures. (See page 2 for ASTM C-891 Summary)
- Tank meets or exceeds ASTM C-478 Specifications, ASSHTO H-20 Traffic Rating Specifications.
- Butyl rubber sealant meets or exceeds Fed. Spec. SS-S-210A. (Provided with tank)
- Plumbing provided by others.

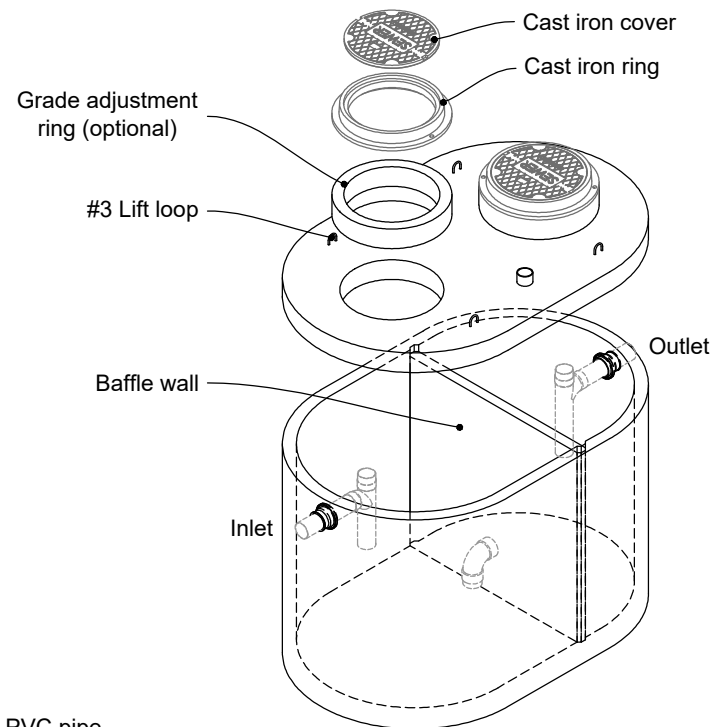
TOP SLAB - TYPICAL REINFORCEMENT



SECTION



Note: N.T.S.



Part #	Capacities				Approximate Weights			
	Section / Gal.		Cubic Ft.		Tank	Lid	Baffle Wall	Total
	A	B	A	B				
PCA-000-270	640	430	84	56	6,995 lbs	2,550 lbs	910 lbs	10,455 lbs
Total Capacity: 1070 gallons								



Front Range Precast Concrete, Inc.

5901 Dexter Street, Unit 102, Commerce City, CO 80022

Phone (303) 442-3207 - (800) 783-3207 - Fax (303) 442-3209

www.flxx.com

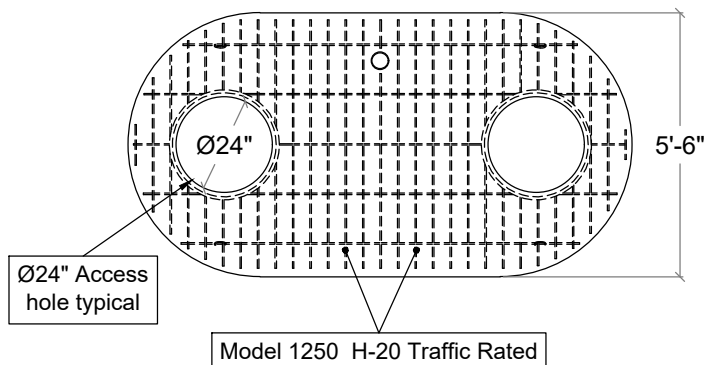


1250 Gal. Grease Interceptor

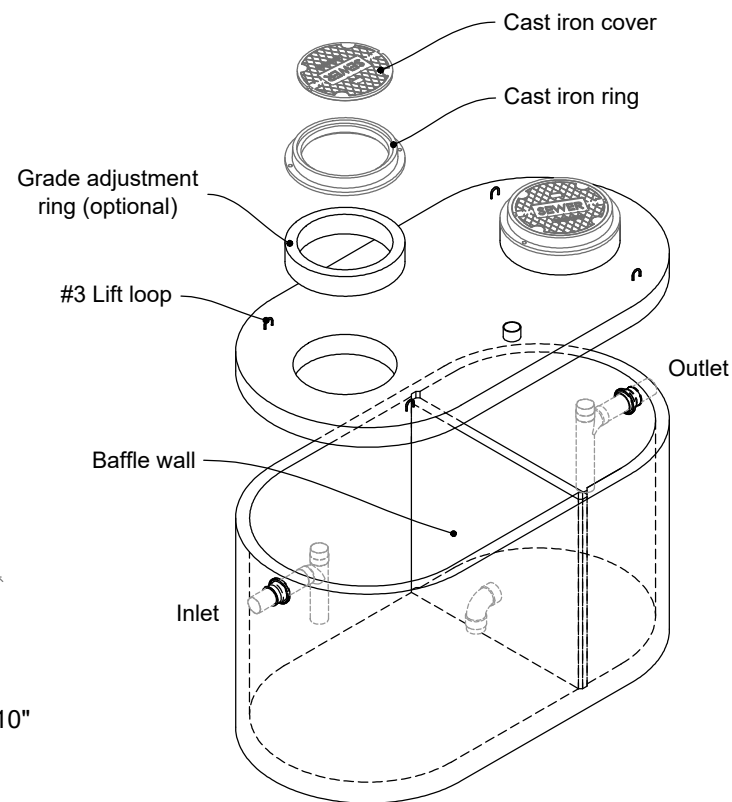
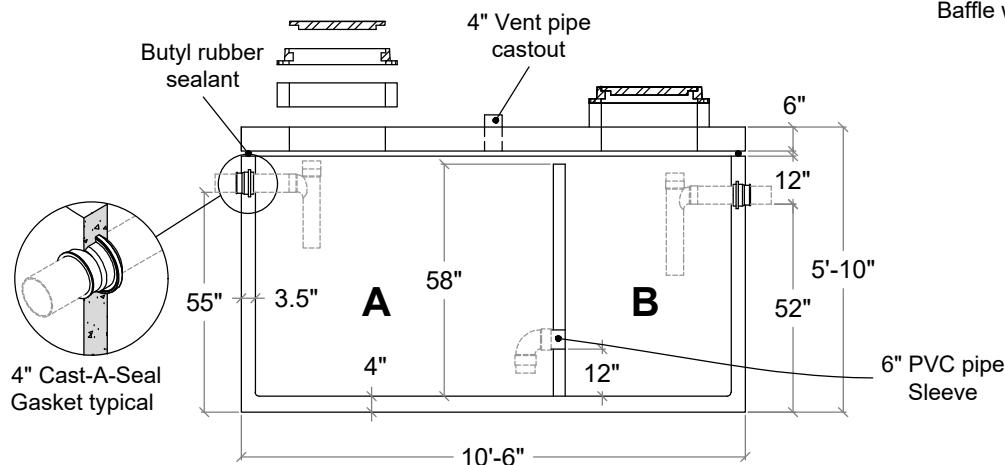


- Secondary chamber volume equal to 1/3 total capacity.
- Verify compliance with local regulations. Follow standard practice for installation of underground precast concrete structures. (See page 2 for ASTM C-891 Summary)
- Tank meets or exceeds ASTM C-478 Specifications, ASSHTO H-20 Traffic Rating Specifications.
- Butyl rubber sealant meets or exceeds Fed. Spec. SS-S-210A. (Provided with tank)
- Plumbing provided by others.

TOP SLAB - TYPICAL REINFORCEMENT



SECTION



Note: N.T.S.

Part #	Capacities				Approximate Weights			
	Section / Gal.		Cubic Ft.		Tank	Lid	Baffle Wall	Total
	A	B	A	B				
PCA-000-271	835	555	110	72	8,430 lbs	3,370 lbs	910 lbs	12,710 lbs
Total Capacity: 1390 gallons								



Front Range Precast Concrete, Inc.

5901 Dexter Street, Unit 102, Commerce City, CO 80022

Phone (303) 442-3207 - (800) 783-3207 - Fax (303) 442-3209

www.flxx.com

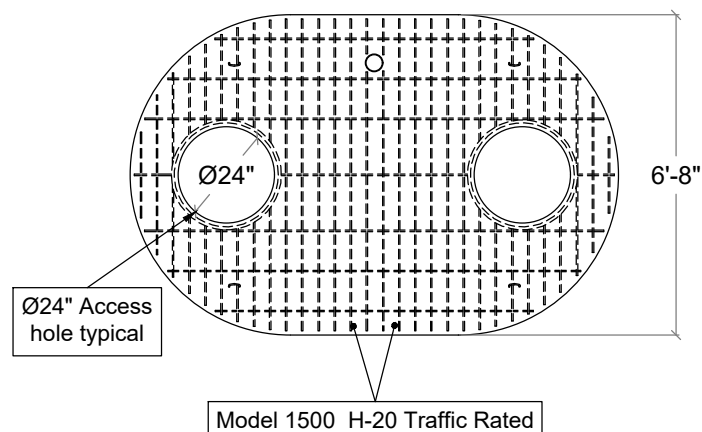


1500 Gal. Grease Interceptor

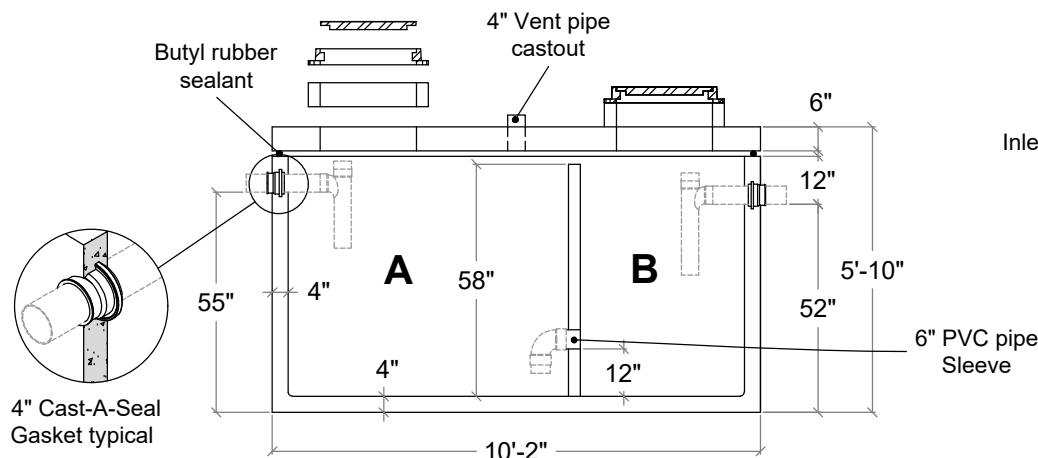


- Secondary chamber volume equal to 1/3 total capacity.
- Verify compliance with local regulations. Follow standard practice for installation of underground precast concrete structures. (See page 2 for ASTM C-891 Summary)
- Tank meets or exceeds ASTM C-478 Specifications, ASSHTO H-20 Traffic Rating Specifications.
- Butyl rubber sealant meets or exceeds Fed. Spec. SS-S-210A. (Provided with tank)
- Plumbing provided by others.

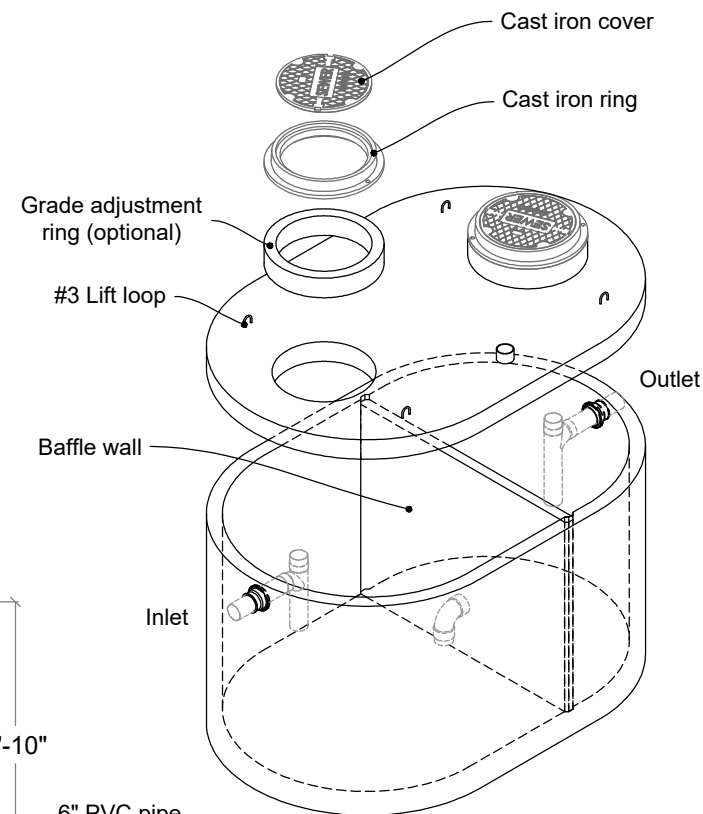
TOP SLAB - TYPICAL REINFORCEMENT



SECTION



Note: N.T.S.



Part #	Capacities				Approximate Weights			
	Section / Gal.		Cubic Ft.		Tank	Lid	Baffle Wall	Total
	A	B	A	B				
PCA-000-272	920	615	120	80	9,615 lbs	3,900 lbs	1,110 lbs	14,625 lbs
Total Capacity: 1535 gallons								



Front Range Precast Concrete, Inc.

5901 Dexter Street, Unit 102, Commerce City, CO 80022

Phone (303) 442-3207 - (800) 783-3207 - Fax (303) 442-3209

www.flxx.com

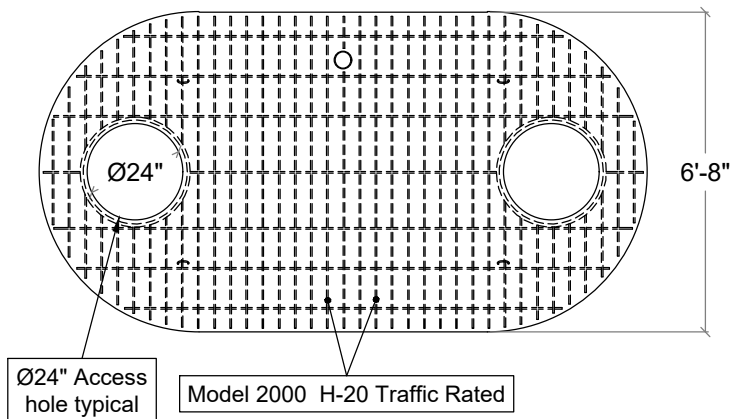


2000 Gal. Grease Interceptor

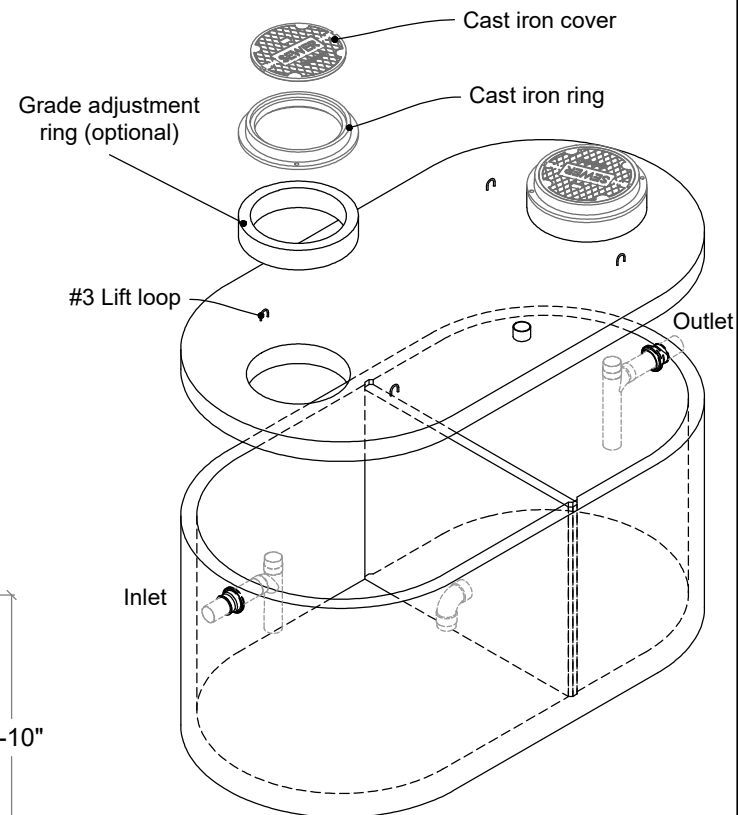
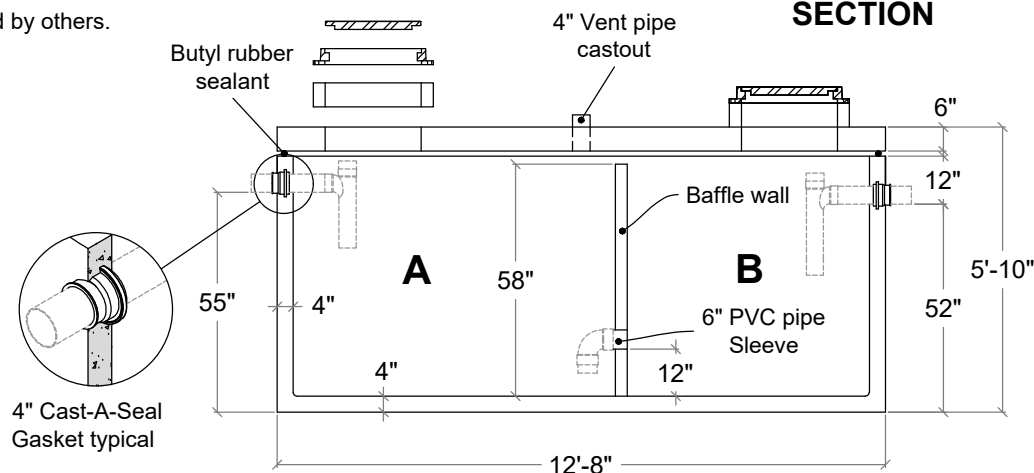


- Secondary chamber volume equal to 1/3 total capacity.
- Verify compliance with local regulations. Follow standard practice for installation of underground precast concrete structures. (See page 2 for ASTM C-891 Summary)
- Tank meets or exceeds ASTM C-478 Specifications, ASSHTO H-20 Traffic Rating Specifications.
- Butyl rubber sealant meets or exceeds Fed. Spec. SS-S-210A. (Provided with tank)
- Plumbing provided by others.

TOP SLAB - TYPICAL REINFORCEMENT



SECTION



Note: N.T.S.

Part #	Capacities				Approximate Weights			
	Section / Gal.		Cubic Ft.		Tank	Lid	Baffle Wall	Total
	A	B	A	B				
PCA-000-273	1200	800	156	104	11,690 lbs	5,145 lbs	1,110 lbs	17,945 lbs
Total Capacity: 2000 gallons								



Front Range Precast Concrete, Inc.

5901 Dexter Street, Unit 102, Commerce City, CO 80022

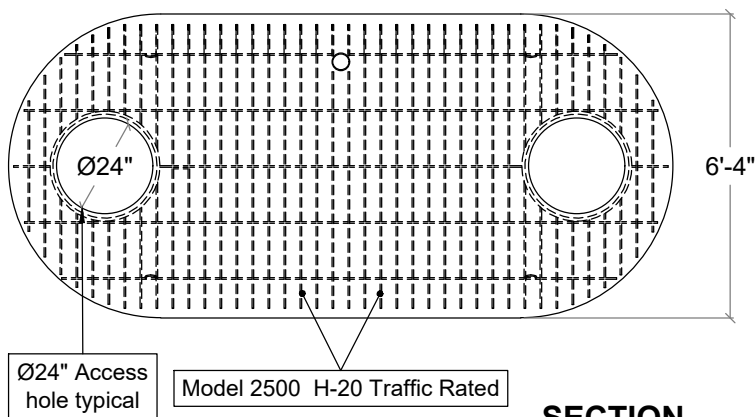
Phone (303) 442-3207 - (800) 783-3207 - Fax (303) 442-3209

www.flxx.com

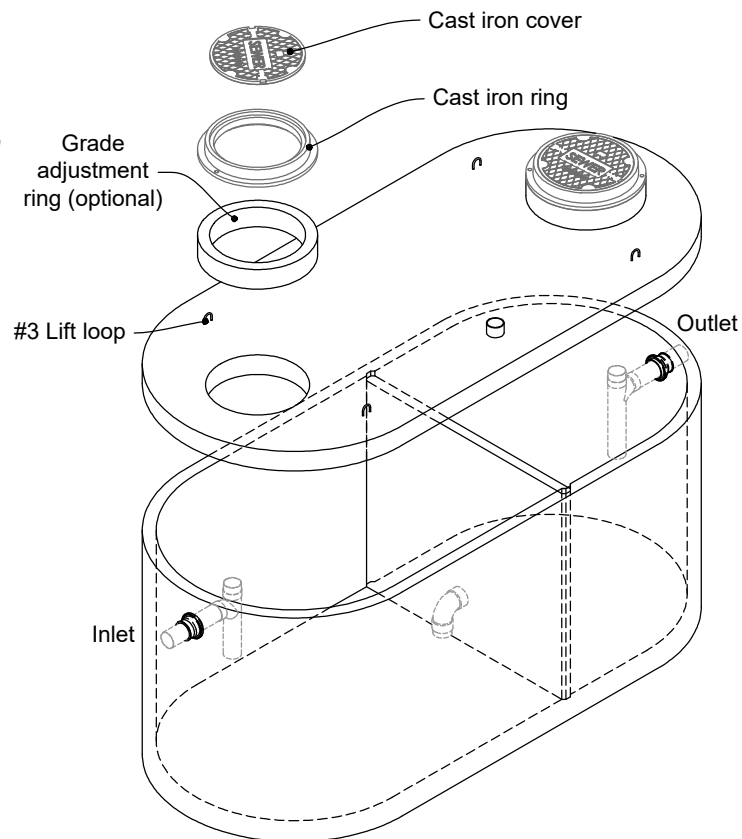
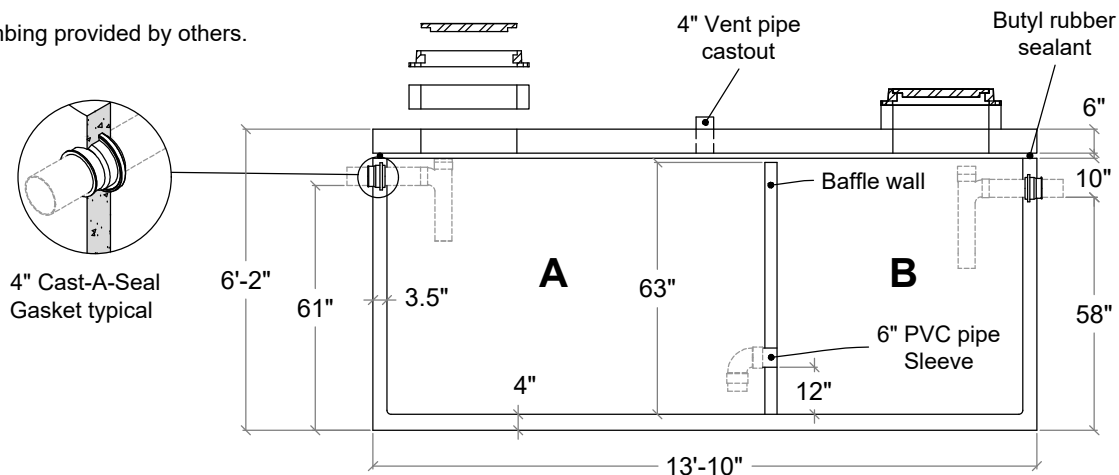
2500 Gal. Grease Interceptor

- Secondary chamber volume equal to 1/3 total capacity.
- Verify compliance with local regulations. Follow standard practice for installation of underground precast concrete structures. (See page 2 for ASTM C-891 Summary)
- Tank meets or exceeds ASTM C-478 Specifications, ASSHTO H-20 Traffic Rating Specifications.
- Butyl rubber sealant meets or exceeds Fed. Spec. SS-S-210A. (Provided with tank)
- Plumbing provided by others.

TOP SLAB - TYPICAL REINFORCEMENT



SECTION



Note: N.T.S.

Part #	Capacities				Approximate Weights			
	Section / Gal.		Cubic Ft.		Tank	Lid	Baffle Wall	Total
	A	B	A	B				
PCA-000-313	1470	980	190	128	11,890 lbs	5,400 lbs	1,560 lbs	18,850 lbs
Total Capacity: 2450 gallons								



Front Range Precast Concrete, Inc.

5901 Dexter Street, Unit 102, Commerce City, CO 80022

Phone (303) 442-3207 - (800) 783-3207 - Fax (303) 442-3209

www.flxx.com

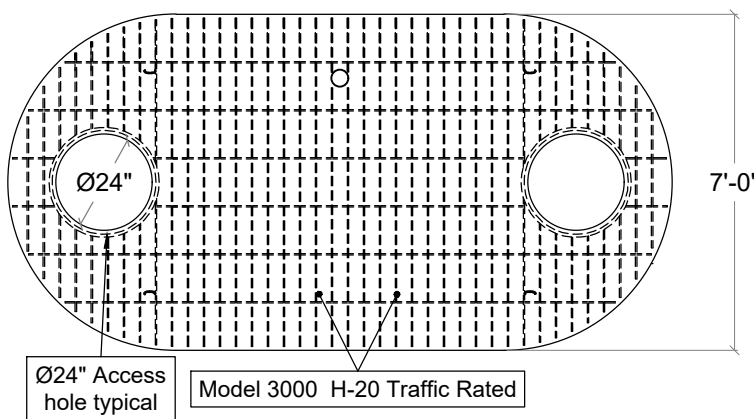


3000 Gal. Grease Interceptor

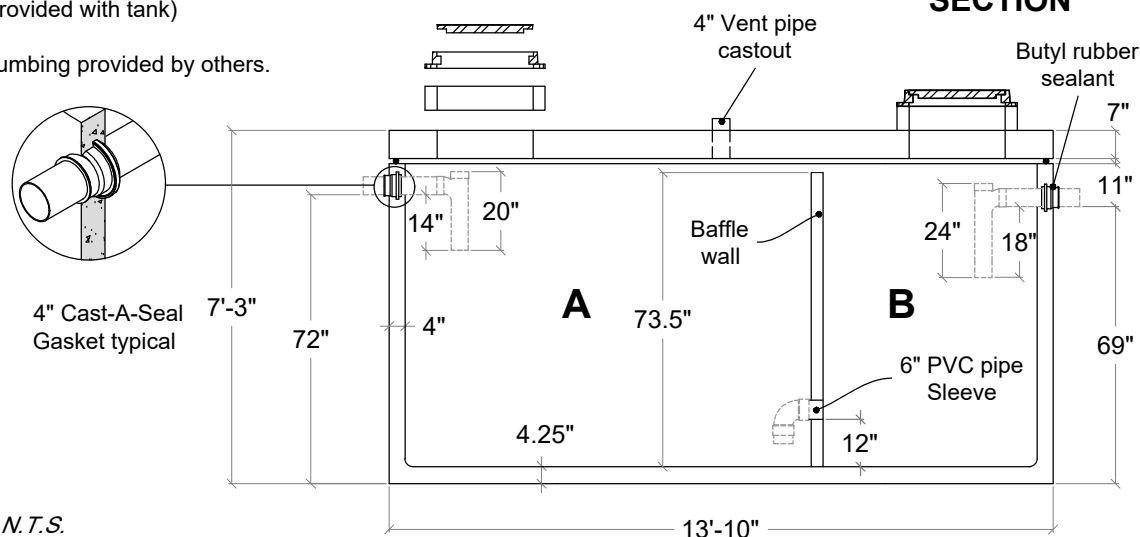


- Secondary chamber volume equal to 1/3 total capacity.
- Verify compliance with local regulations. Follow standard practice for installation of underground precast concrete structures. (See page 2 for ASTM C-891 Summary)
- Tank meets or exceeds ASTM C-478 Specifications, ASSHTO H-20 Traffic Rating Specifications.
- Butyl rubber sealant meets or exceeds Fed. Spec. SS-S-210A. (Provided with tank)
- Plumbing provided by others.

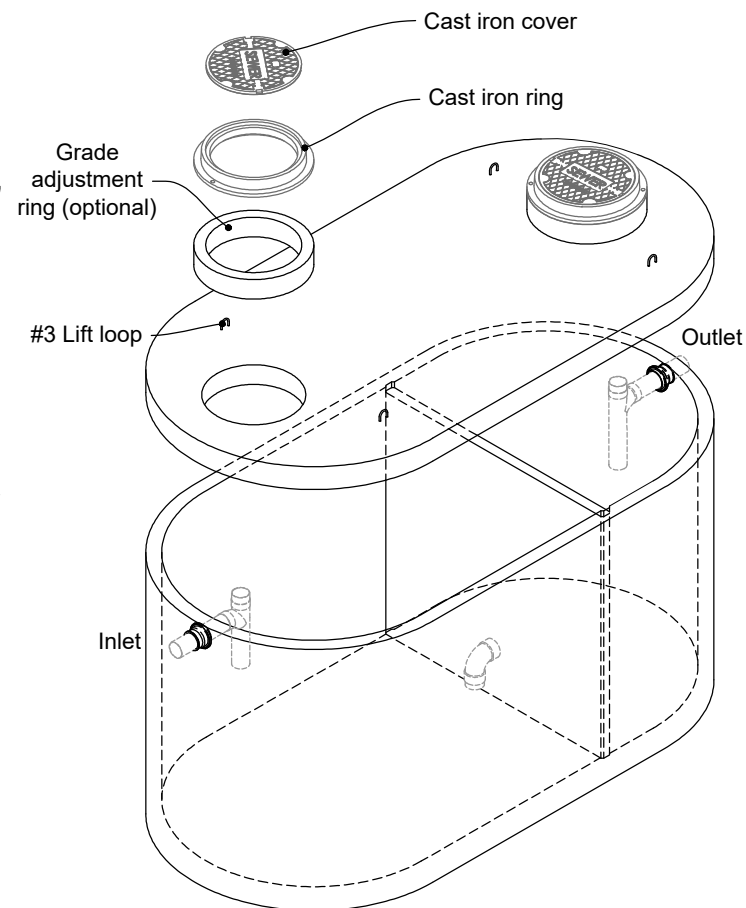
TOP SLAB - TYPICAL REINFORCEMENT



SECTION



Note: N.T.S.



Part #	Capacities				Approximate Weights			
	Section / Gal.		Cubic Ft.		Tank	Lid	Baffle Wall	Total
	A	B	A	B				
PCA-000-319	2012	1006	269	135	15,509 lbs	7,000 lbs	1,965 lbs	24,474 lbs
Total Capacity: 3018 gallons								



Front Range Precast Concrete, Inc.

5901 Dexter Street, Unit 102, Commerce City, CO 80022

Phone (303) 442-3207 - (800) 783-3207 - Fax (303) 442-3209

www.flxx.com