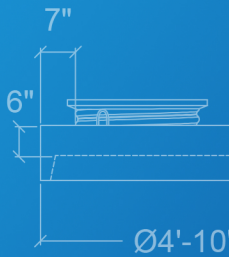
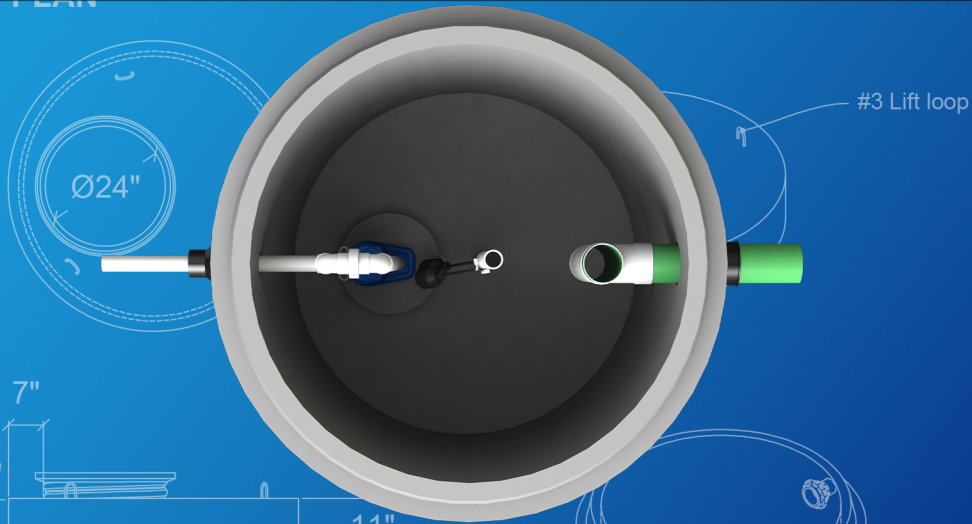
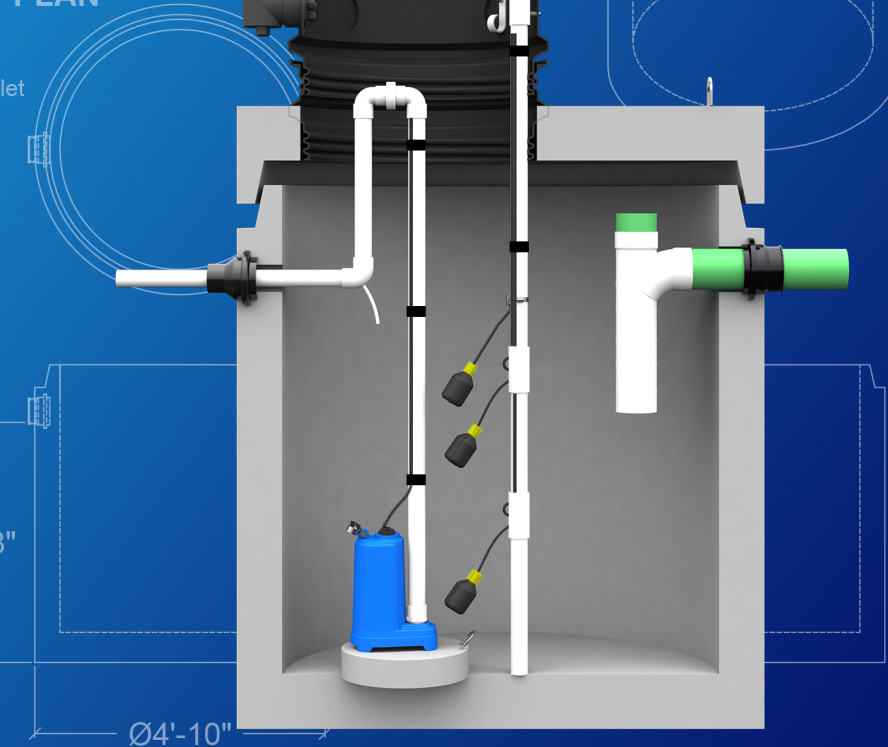


ELECTRIC LIFT CHAMBER

PLAN

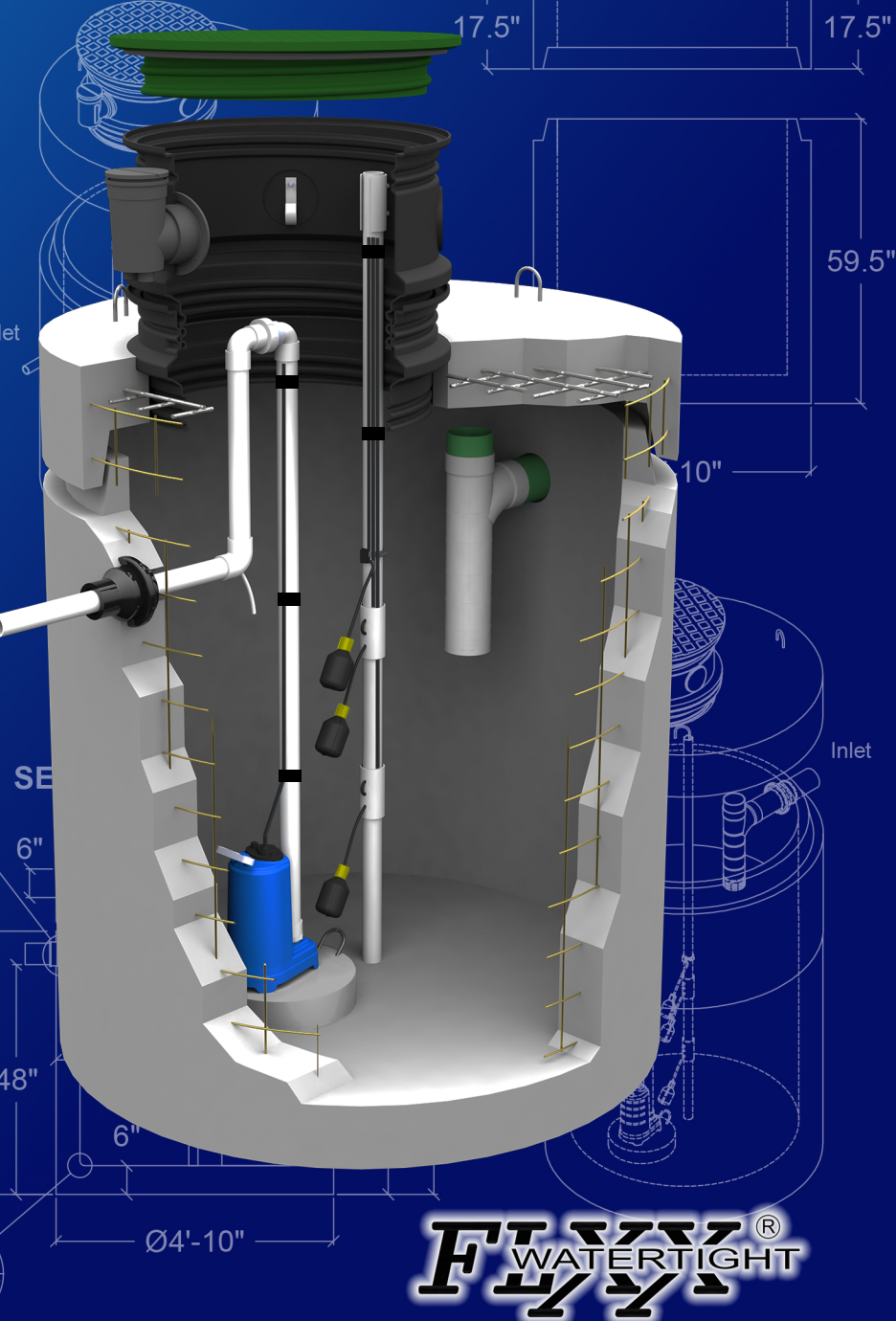


PLAN



Outlet

4" Cast-A-Seal Gasket typical

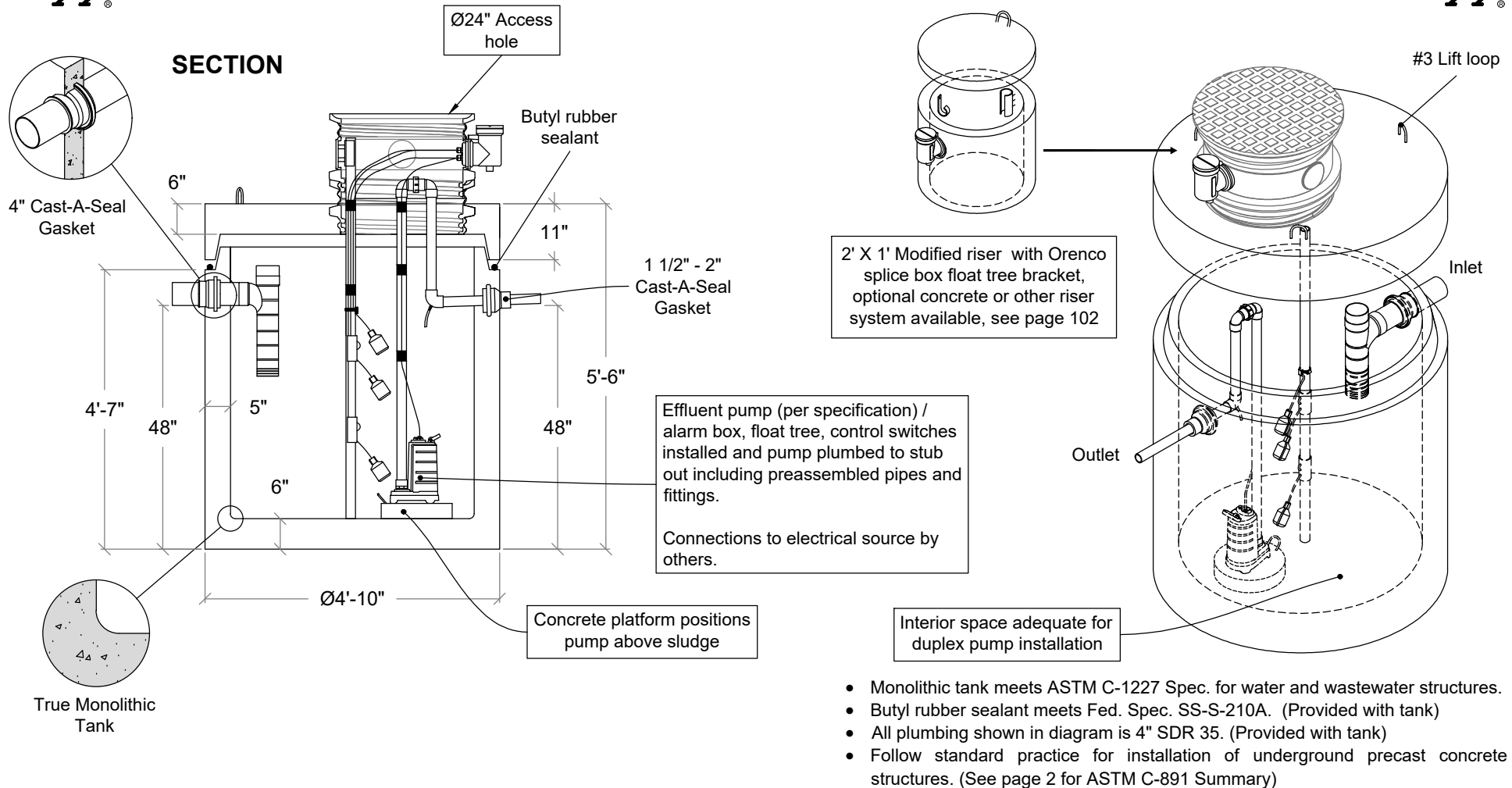


FLXX®
WATERTIGHT

400 Gal. Electric Lift Station

FLXX®

FLXX®



Part #	Discharge / Cycle	Approximate Weights		
		Tank	Lid	Total
PCA-000-294	7.8 Gal. / Vertical inch.	4,850 lbs	1,520 lbs	6,370 lbs

Note: N.T.S.

FLXX®
WATERTIGHT

Front Range Precast Concrete, Inc.

5901 Dexter Street, Unit 102, Commerce City, CO 80022

Phone (303) 442-3207 - (800) 783-3207 - Fax (303) 442-3209

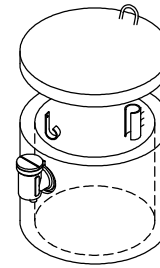
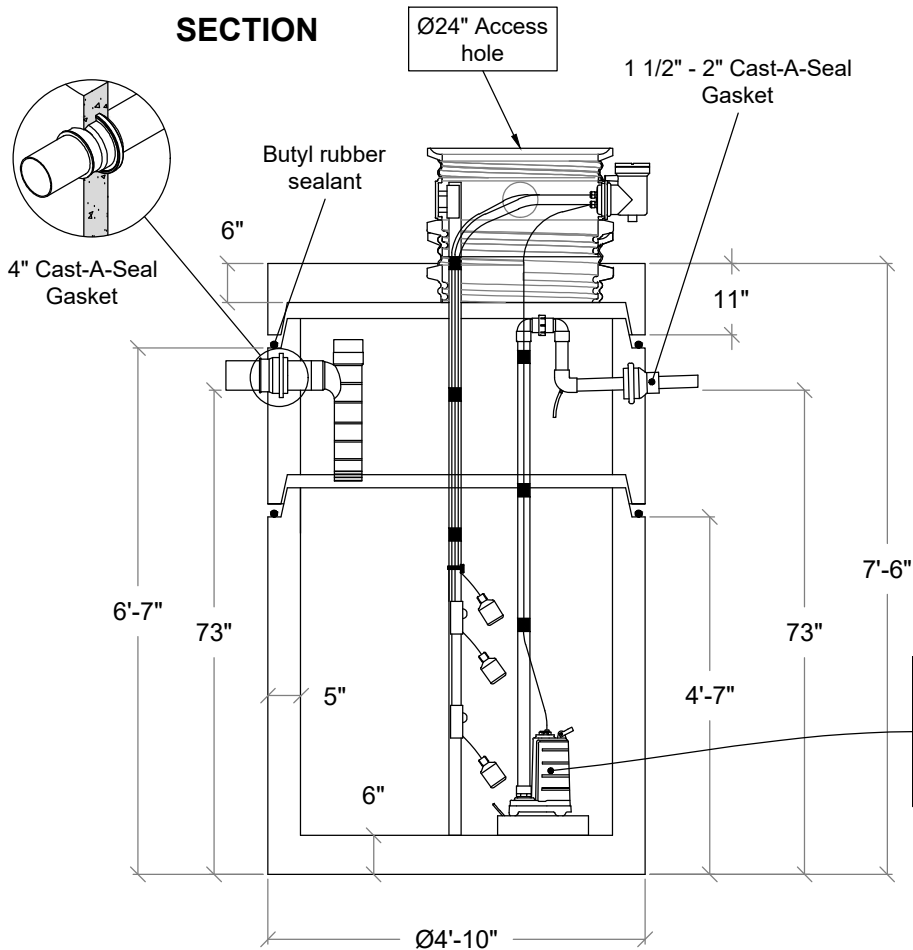
www.flxx.com

500 Gal. Electric Lift Station

FLXX

FLXX

SECTION



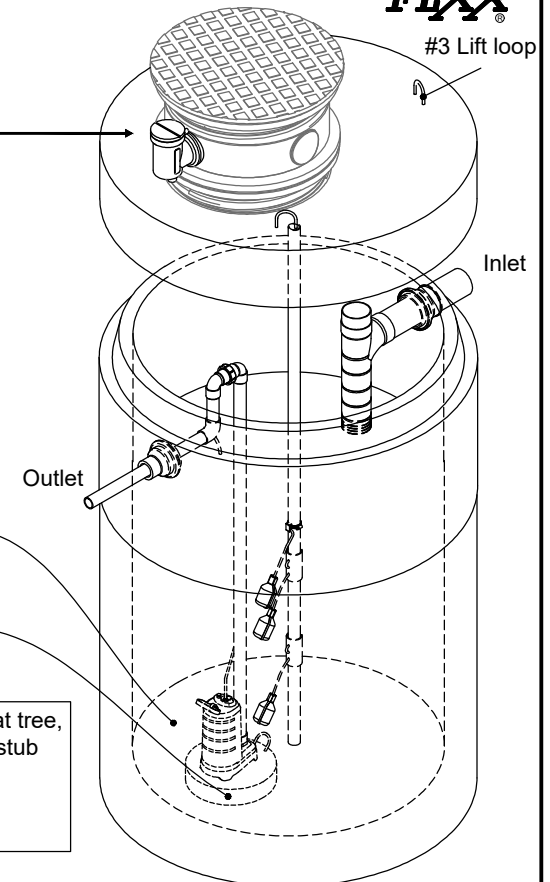
2' X 1' Modified riser with Orenco splice box float tree bracket, optional concrete or other riser system available, see page 102

Interior space adequate for duplex pump installation

Concrete platform positions pump above sludge

Effluent pump (per specification) / alarm box, float tree, control switches installed and pump plumbed to stub out including preassembled pipes and fittings.

Connections to electrical source by others.



- Monolithic tank meets ASTM C-1227 Spec. for water and wastewater structures.
- Butyl rubber sealant meets Fed. Spec. SS-S-210A. (Provided with tank)
- All plumbing shown in diagram is 4" SDR 35. (Provided with tank)
- Follow standard practice for installation of underground precast concrete structures. (See page 2 for ASTM C-891 Summary)

Note: N.T.S.

Part #	Discharge / Cycle	Approximate Weights			
		Bottom Section	Top Section	Lid	Total
PCA-000-295	7.8 Gal / Vertical Inch	4,850 lbs	1,740 lbs	1,525 lbs	8,115 lbs

FLXX®
WATERTIGHT

Front Range Precast Concrete, Inc.

5901 Dexter Street, Unit 102, Commerce City, CO 80022

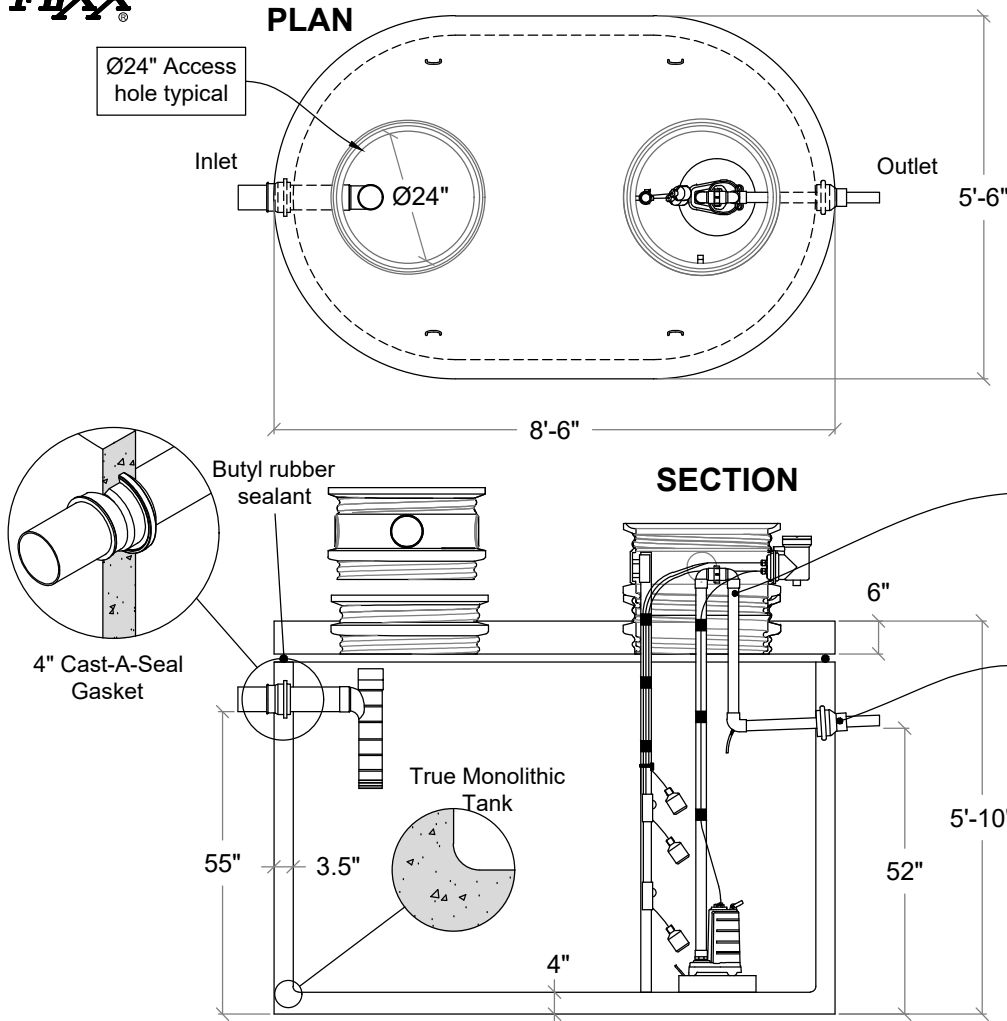
Phone (303) 442-3207 - (800) 783-3207 - Fax (303) 442-3209

www.flxx.com

1000 Gal. Electric Lift Station

FLXX®

FLXX®



2' X 1' Modified riser with Orenco splice box float tree bracket, optional concrete or other riser system available, see page 102

Effluent pump (per specification) / alarm box, float tree, control switches installed and pump plumbed to stub out including preassembled pipes and fittings.

Connections to electrical source by others.

Interior space adequate for duplex pump installation

Concrete platform positions pump above sludge

- Monolithic tank meets ASTM C-1227 Spec. for water and wastewater structures.
- Butyl rubber sealant meets Fed. Spec. SS-S-210A. (Provided with tank)
- All plumbing shown in diagram is 4" SDR 35. (Provided with tank)
- Follow standard practice for installation of underground precast concrete structures. (See page 2 for ASTM C-891 Summary)

Part #	Discharge / Cycle	Approximate Weights		
		Tank	Lid	Total
PCA-000-298	21.5 Gal. / Vertical inch.	6,995 lbs	2,550 lbs	9,545 lbs

Note: N.T.S.

FLXX®
WATERTIGHT

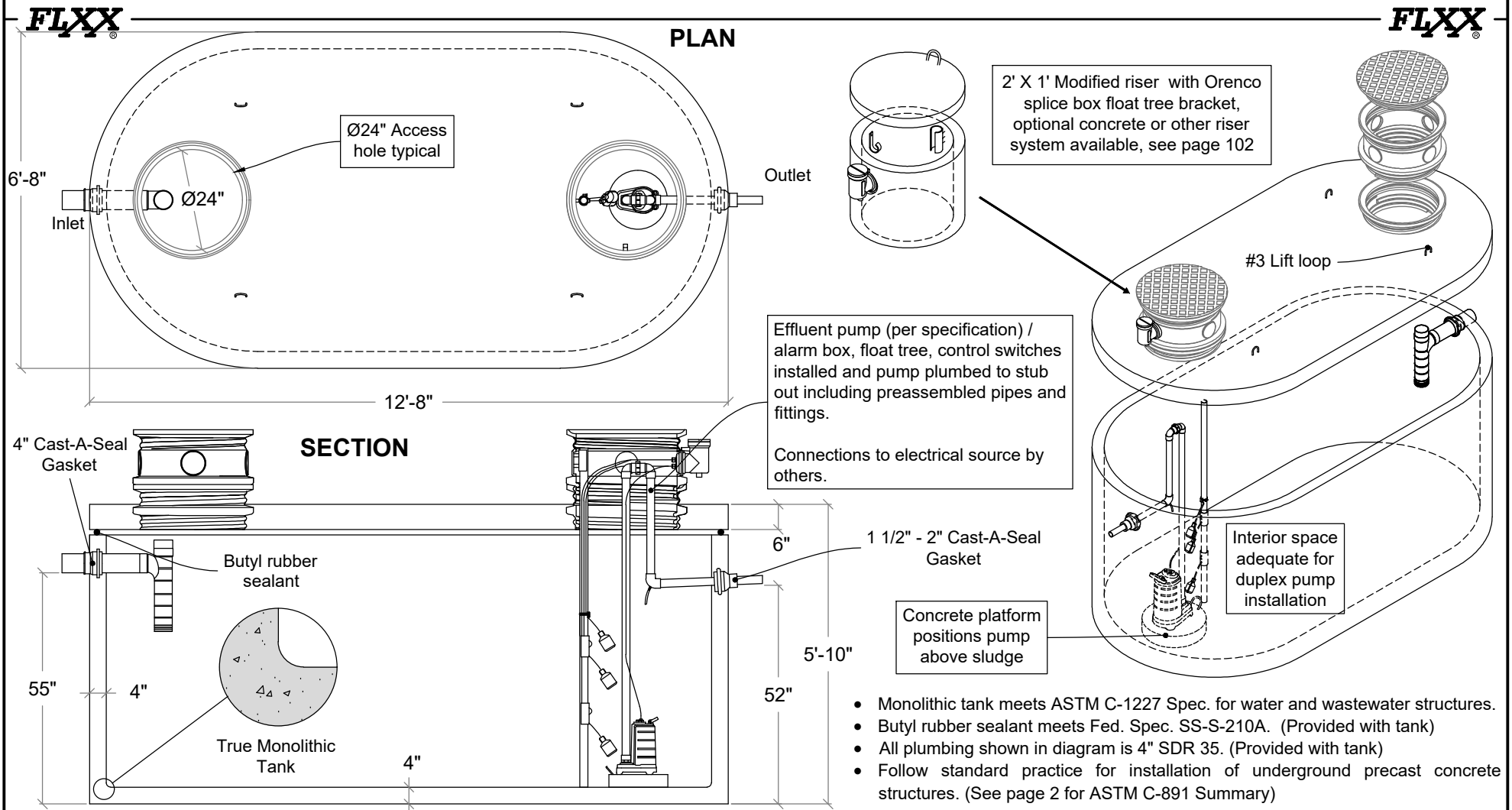
Front Range Precast Concrete, Inc.

5901 Dexter Street, Unit 102, Commerce City, CO 80022

Phone (303) 442-3207 - (800) 783-3207 - Fax (303) 442-3209

www.flxx.com

2000 Gal. Electric Lift Station



Part #	Discharge / Cycle	Approximate Weights		
		Tank	Lid	Total
PCA-000-299	40 Gal. / Vertical inch.	11,690 lbs	5,145 lbs	16,835 lbs

Note: N.T.S.

FLXX®
WATERTIGHT

Front Range Precast Concrete, Inc.

5901 Dexter Street, Unit 102, Commerce City, CO 80022

Phone (303) 442-3207 - (800) 783-3207 - Fax (303) 442-3209

www.flxx.com