



# EASTER EVENTS

April 2026

## Easter Egg Hunt

Thursday 2nd April, 12-4pm  
Petty Pool Vocational College



Our Easter Egg Hunt at Petty Pool is back! Join us for a fun-filled Easter adventure through the Petty Pool Woodlands...

Before you set off, you'll receive a trail sheet and pencil to help you with your adventure. On completion of the trail, all children participants will receive either a chocolate egg or a dietary-friendly bag of treats.

**The price is £3 per child** and is open to the whole family and friends. Everyone is welcome!

[Book Tickets Here](#)



## APS Holiday Club with HAF

Tuesday 7th - Friday 10th April, 10am-2pm.  
APS Sension House, Northwich, CW9 7LU.

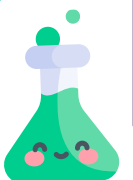


**Tuesday 7th April** - Easter Crafts and Sensory Table

**Wednesday 8th April** - Circus Skills & Film Afternoon

**Thursday 9th April** - Science Mad & Mindfulness Movement

**Friday 10th April** - T-shirt designing & free play.



We have **12 free places** available for each session through the HAF Holiday Programme, these slots are **free for eligible children who receive Benefit Related Free School Meals**.

We also have **8 paid places available**, which are £15 per day. Lunch will be provided.

The club is available for SEND children and their siblings, aged 8-15 years old. For more information or to book, [please go to the HAF website](#)

## The Magic Faraway Tree Relaxed Screening

**Tuesday 14th April, 6pm, Chester Storyhouse**



Join us for our Relaxed Screening at Chester Storyhouse of The Magic Faraway Tree, a calm and supportive cinema experience ideal for our families. There will be an additional charge of £3 for every APS Member Ticket and £6 for non-members

[Book Tickets Here](#)

## APS Craftathon

**Thursday 16th April, 10am-5pm**  
**APS Sension House, Northwich, CW9 7LU.**



Terri will be crafting her heart out from 10am–5pm to raise funds for APS, with all sponsorship going directly toward creating our new sensory room!

There are two ways to support: you can sponsor Terri, or join us on the day. We're running creative sessions from 10am–12.30pm or 1–5pm. Tickets are £3 per person, with lots of craft activities included. [Book Here](#)

# Silent Disco

**Saturday 18<sup>th</sup> April, 1-4.30pm**  
**APS Sension House, CW9 7LU.**



Join us for a fun and inclusive Silent Disco, suitable for all ages and sensory needs. Sessions details:

- 1-2.30pm for under 16s (open to the whole family, including siblings)
- 3-4.30pm for over 16s

Tickets are £3 per person, and we'll have a tuck shop with sweet cones and drinks available for £1.

[Book Your Tickets Here](#)

# Private Session at Hayrack Farm

**Thursday 23rd April, 4-6pm at Hayrack Farm,**  
**A5117, Thornton-le-Moors, CH2 4HU**



The private session will include a meet and greet with the animals and the option of lamb bottle feeding.

Each child will also receive a free bag of animal feed - extra bags can be purchased on the day.

The cafe will be open for families to buy hot drinks, cakes, ice creams, etc.

**Tickets are £4 for APS Members and £7 for non-members.** Please book on all that are attending.

[Book Here](#)



Autism Practical Support

**0344 850 8607**

Sension House, Denton  
Drive, Northwich,  
Cheshire, CW9 7LU

[\*\*info@autismpracticalsupport.org.uk\*\*](mailto:info@autismpracticalsupport.org.uk)

# Autism Friendly Forest School

April 22nd and 25th, Venturewood, Delemere Forest (Located next to the Visitor Centre Car Park)

APS are partnering with Venturewood to offer two Autism Friendly Forest School sessions this April. These sessions provide a calm, supportive outdoor experience for autistic children and their families.

APS members can use **APS20MARCH** for **20% off** (£4 per child, adults free). **Enter the code before you checkout.**



## Session Details:

**Forest School Discovery Club Wednesday 22nd April, 5pm – 6:30pm** **SOLD OUT**

**Family Forest School - Saturday 25th April, 10am – 12pm**  
[Book Here](#)

These sessions are a brilliant way for autistic children and their families to explore the outdoors with experienced, inclusive forest school leaders.

We're really pleased to be working with Venturewood to make these sessions more accessible for our community. We hope to see lots of you enjoying some woodland wellbeing this April!