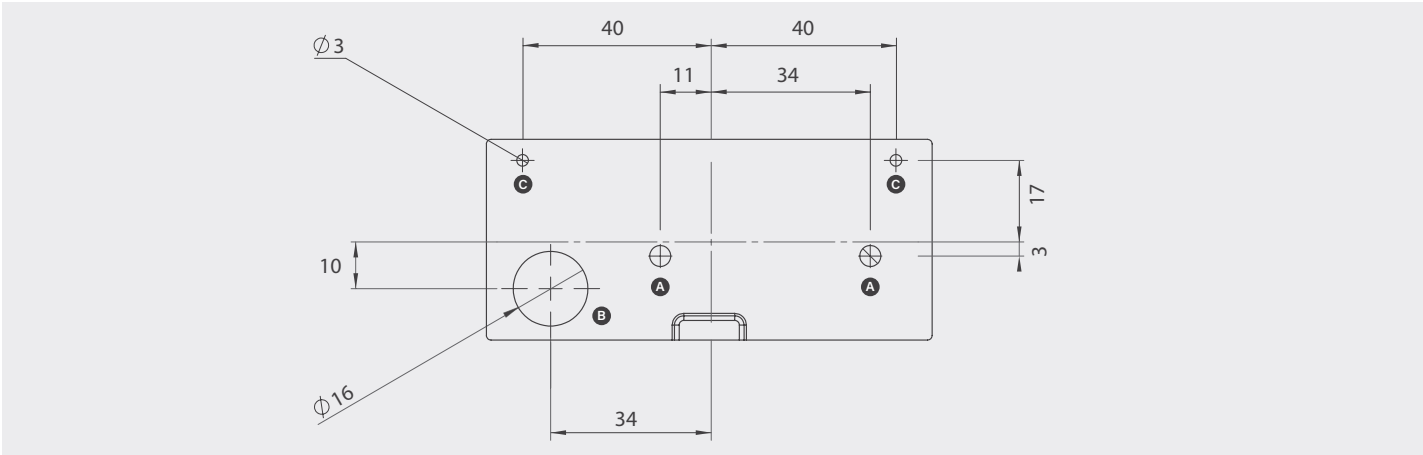
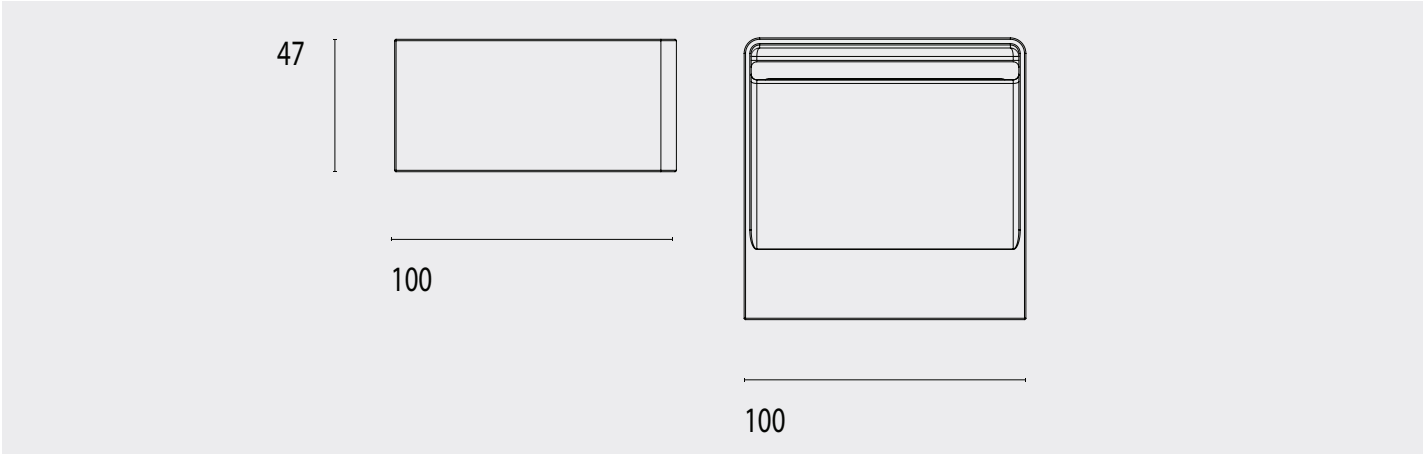


Fade 100 Surface Uplight Type 1

102 10 5001 --,---

Power	10W
Voltage	24V-DC
Class	III
Ingress Protection	IP65



Hole Positions

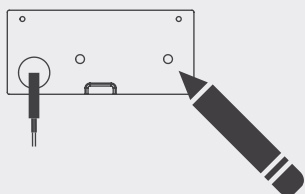
- A Mounting bracket fixation with 6mm anchor hole
- B Cable Entry
- C Clearance holes for luminaire fixation 3mm. **DO NOT** drill through mounting plate for risk of damaging thread.

Fade 100 Surface Uplight Type 1

102 10 5001 --,---

Power	10W
Voltage	240V-AC
Class	III
Ingress Protection	IP65

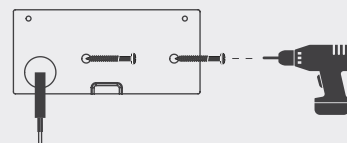
1



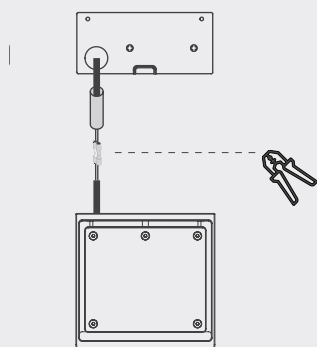
2



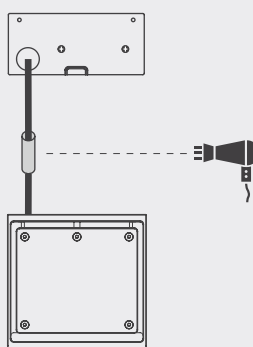
3



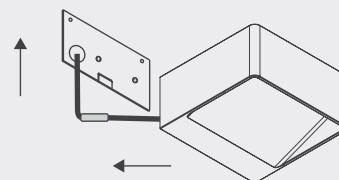
4



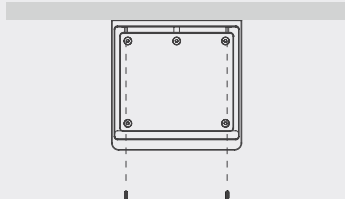
5



6



7



Installation

- 1 Mark up mounting positions using plate
- 2 Drill pilot holes
- 3 Screw mounting bracket to wall
- 4 Crimp connection
- 5 Seal connection with heat shrink
- 6 Locate tab on fixture and slide upward into detail on mounting plate.
- 7 Screw fixture to mounting plate